

Data Path : Z:\pestpcbsrv\HPCHEM1\ECD_0\Data\PO100319\
 Data File : PO061625.D
 Signal(s) : Signal #1: ECD1A.CH Signal #2: ECD2B.CH
 Acq On : 03 Oct 2019 9:21
 Operator : HP/AJ
 Sample : HEXANE
 Misc :
 ALS Vial : 1 Sample Multiplier: 1

Instrument :
 ECD_0
 ClientSampled :

Integration File signal 1: autoint1.e
 Integration File signal 2: autoint2.e
 Quant Time: Oct 04 01:22:05 2019
 Quant Method : Z:\pestpcbsrv\HPCHEM1\ECD_0\methods\PO100119.M
 Quant Title : GC EXTRACTABLES
 QLast Update : Tue Oct 01 15:34:04 2019
 Response via : Initial Calibration
 Integrator: ChemStation 6890 Scale Mode: Small noise peaks clipped

Volume Inj. : 2 µl
 Signal #1 Phase : ZB-MR2 Signal #2 Phase: ZB-MR2
 Signal #1 Info : 30Mx0.32mmx 0.50µ Signal #2 Info : 30M x 0.32mm x 0.25µm

Compound	RT#1	RT#2	Resp#1	Resp#2	ng/ml	ng/ml
System Monitoring Compounds						
1) SA Tetrachlo...	4.395	3.515	4841	5729	0.118	0.177 #
2) SA Decachlor...	10.007	8.382	13477	8692	0.289	0.268
Target Compounds						
3) L1 AR-1016-1	5.537	0.000	3391	0	1.849	N.D. #
4) L1 AR-1016-2	5.596	0.000	4744	0	1.835	N.D. #
5) L1 AR-1016-3	5.640	4.821	2120	2858	1.320	2.853 #
6) L1 AR-1016-4	5.723	4.821	1633	2858	1.222	3.298 #
7) L1 AR-1016-5	6.026	5.021	39824	2116	29.038	1.854 #
8) L2 AR-1221-1	4.549	3.674	1358	5605	2.937	14.156 #
9) L2 AR-1221-2	4.661	0.000	517	0	1.441	N.D. #
10) L2 AR-1221-3	4.734	0.000	1992	0	1.750	N.D. #
11) L3 AR-1232-1	4.734	0.000	1992	0	1.424	N.D. #
12) L3 AR-1232-2	5.252	0.000	6486	0	8.266	N.D. #
13) L3 AR-1232-3	5.537	4.821	3391	2858	1.985	4.329 #
14) L3 AR-1232-4	5.699	4.833	4402	4318	4.975	6.850 #
15) L3 AR-1232-5	5.792	5.015	4060	1472	5.856	2.146 #
16) L4 AR-1242-1	5.537	0.000	3391	0	2.388	N.D. #
17) L4 AR-1242-2	5.596	0.000	4744	0	2.360	N.D. #
18) L4 AR-1242-3	5.640	4.821	2120	2858	1.680	3.660 #
19) L4 AR-1242-4	5.723	4.833	1633	4318	1.554	5.262 #
20) L4 AR-1242-5	6.481	5.369	4339	26794	3.244	25.012 #
21) L5 AR-1248-1	5.537	0.000	3391	0	2.887	N.D. #
22) L5 AR-1248-2	5.829	4.821	3074	2858	1.822	2.426 #
23) L5 AR-1248-3	6.026	4.833	39824	4318	21.309	3.479 #
24) L5 AR-1248-4	6.427	5.021	43570	2116	18.439	1.408 #
25) L5 AR-1248-5	6.481	5.369	4339	26794	1.914	17.465 #
26) L6 AR-1254-1	6.367	5.369	48137	26794	21.100	12.216 #
27) L6 AR-1254-2	6.608	5.560	2737	2730	0.758	1.392 #
28) L6 AR-1254-3	6.956	0.000	27291	0	6.985	N.D. #
29) L6 AR-1254-4	7.236	6.181	24310	12661	8.027	6.240
30) L6 AR-1254-5	7.683	6.517	26792	9265	8.531	3.276 #
31) L7 AR-1260-1	7.154	6.009	24270	6958	9.297	3.411 #
32) L7 AR-1260-2	7.408	6.181	26044	12661	8.169	5.271 #
33) L7 AR-1260-3	7.783	6.344	67753	7233	28.209	3.210 #
34) L7 AR-1260-4	7.992	6.809	59694	6098	22.340	3.303 #
35) L7 AR-1260-5	8.298	7.048	41675	12011	8.422	3.085 #
36) L8 AR-1262-1	7.726	6.555	80603	6568	21.037	5.381 #
37) L8 AR-1262-2	8.263	7.048	85163	12011	13.718	2.612 #
38) L8 AR-1262-3	8.582	7.388	84344	9717	20.293	5.158 #
39) L8 AR-1262-4	8.672	7.388	10100	9717	3.199	2.891
40) L8 AR-1262-5	9.292	7.878	28095	3779	13.815	2.493 #
41) L9 AR-1268-1	8.582	7.388	84344	9717	12.543	2.012 #

Data Path : Z:\pestpcbsrv\HPCHEM1\ECD_0\Data\PO100319\
 Data File : PO061625.D
 Signal(s) : Signal #1: ECD1A.CH Signal #2: ECD2B.CH
 Acq On : 03 Oct 2019 9:21
 Operator : HP/AJ
 Sample : HEXANE
 Misc :
 ALS Vial : 1 Sample Multiplier: 1

Instrument :
 ECD_0
 ClientSampleId :

Integration File signal 1: autoint1.e
 Integration File signal 2: autoint2.e
 Quant Time: Oct 04 01:22:05 2019
 Quant Method : Z:\pestpcbsrv\HPCHEM1\ECD_0\methods\PO100119.M
 Quant Title : GC EXTRACTABLES
 QLast Update : Tue Oct 01 15:34:04 2019
 Response via : Initial Calibration
 Integrator: ChemStation 6890 Scale Mode: Small noise peaks clipped

Volume Inj. : 2 µl
 Signal #1 Phase : ZB-MR1 Signal #2 Phase: ZB-MR2
 Signal #1 Info : 30Mx0.32mmx 0.50µ Signal #2 Info : 30M x 0.32mm x 0.25µm

	Compound	RT#1	RT#2	Resp#1	Resp#2	ng/ml	ng/ml
42)	L9 AR-1268-2	8.672	7.388	10100	9717	1.631	2.255 #
43)	L9 AR-1268-3	8.895	0.000	16382	0	3.205	N.D. #
44)	L9 AR-1268-4	9.292	7.878	28095	3779	12.849	2.348 #
45)	L9 AR-1268-5	9.697	0.000	922	0	0.061	N.D. #

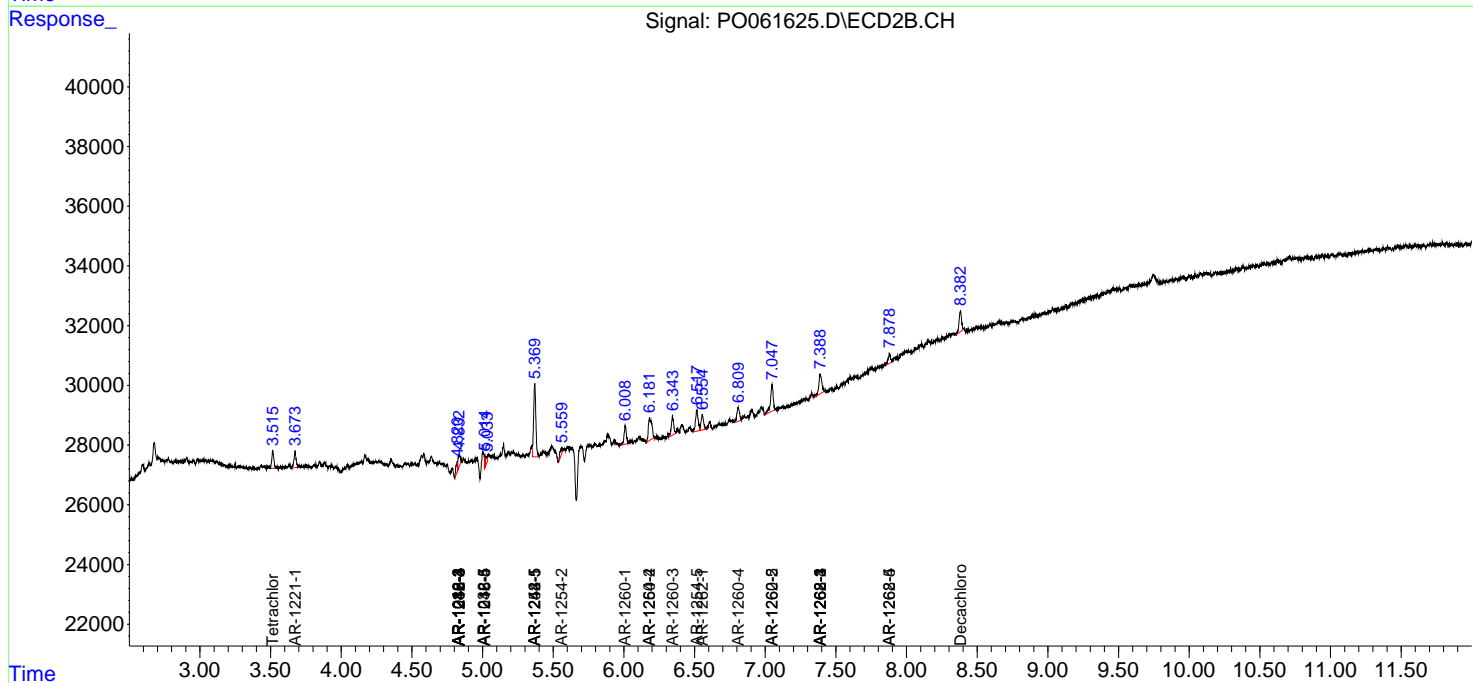
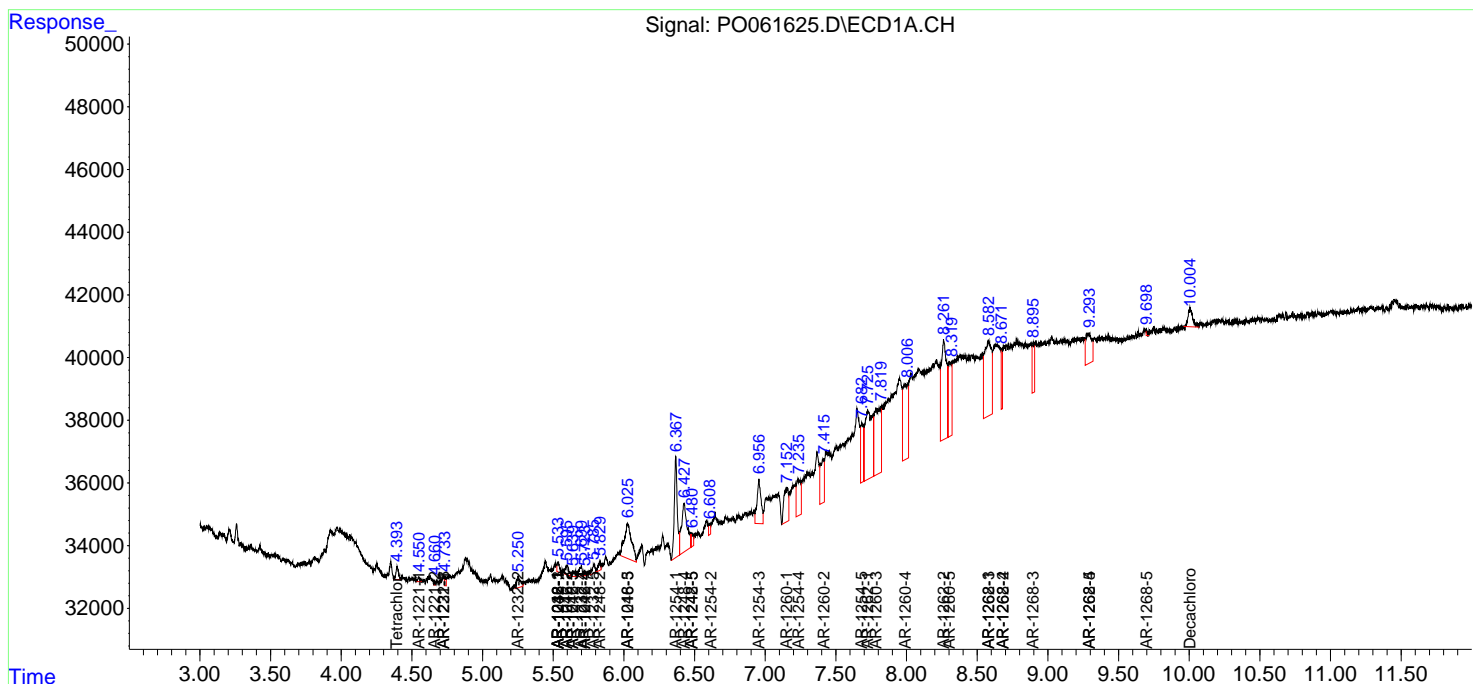
(f)=RT Delta > 1/2 Window (#)=Amounts differ by > 25% (m)=manual int.

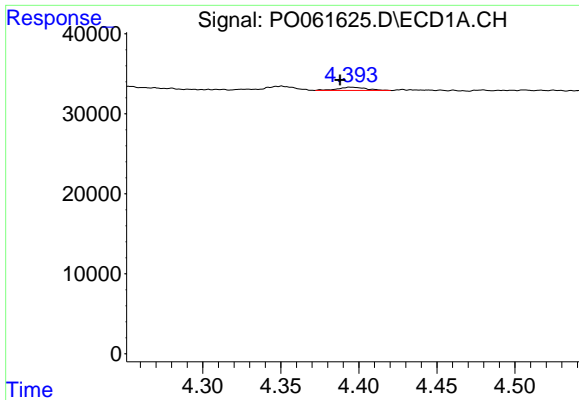
Data Path : Z:\pestpcbsrv\HPCHEM1\ECD_O\Data\PO100319\
 Data File : PO061625.D
 Signal(s) : Signal #1: ECD1A.CH Signal #2: ECD2B.CH
 Acq On : 03 Oct 2019 9:21
 Operator : HP/AJ
 Sample : HEXANE
 Misc :
 ALS Vial : 1 Sample Multiplier: 1

Instrument :
 ECD_O
 ClientSampled :

Integration File signal 1: autoint1.e
 Integration File signal 2: autoint2.e
 Quant Time: Oct 04 01:22:05 2019
 Quant Method : Z:\pestpcbsrv\HPCHEM1\ECD_O\methods\PO100119.M
 Quant Title : GC EXTRACTABLES
 QLast Update : Tue Oct 01 15:34:04 2019
 Response via : Initial Calibration
 Integrator: ChemStation 6890 Scale Mode: Small noise peaks clipped

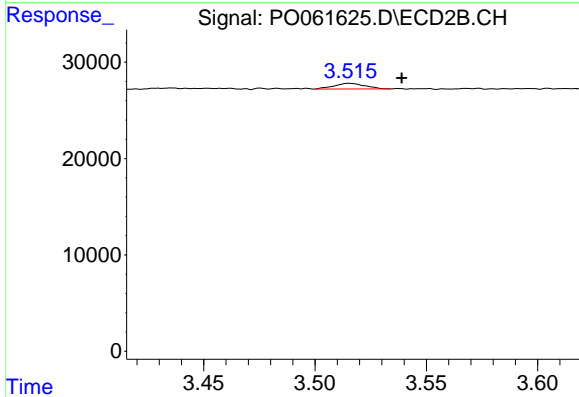
Volume Inj. : 2 µl
 Signal #1 Phase : ZB-MR1 Signal #2 Phase: ZB-MR2
 Signal #1 Info : 30Mx0.32mmx 0.50µ Signal #2 Info : 30M x 0.32mm x 0.25µm



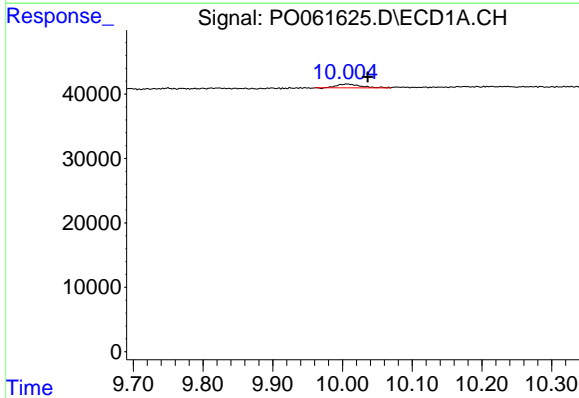


#1 Tetrachloro-m-xylene
 R.T.: 4.395 min
 Delta R.T.: 0.007 min
 Response: 4841
 Conc: 0.12 ng/ml

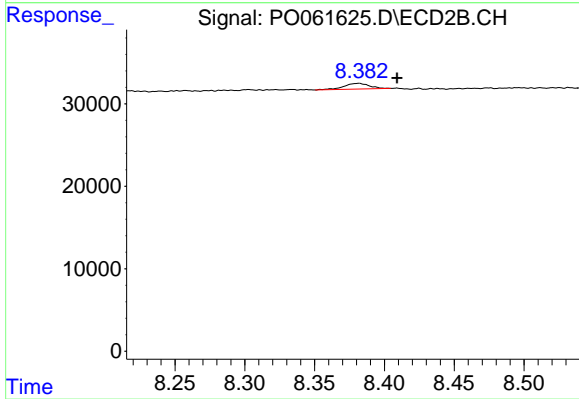
Instrument :
 ECD_O
 ClientSampleId :



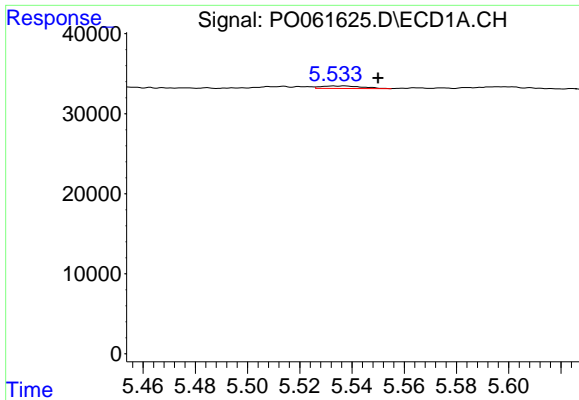
#1 Tetrachloro-m-xylene
 R.T.: 3.515 min
 Delta R.T.: -0.024 min
 Response: 5729
 Conc: 0.18 ng/ml



#2 Decachlorobiphenyl
 R.T.: 10.007 min
 Delta R.T.: -0.029 min
 Response: 13477
 Conc: 0.29 ng/ml



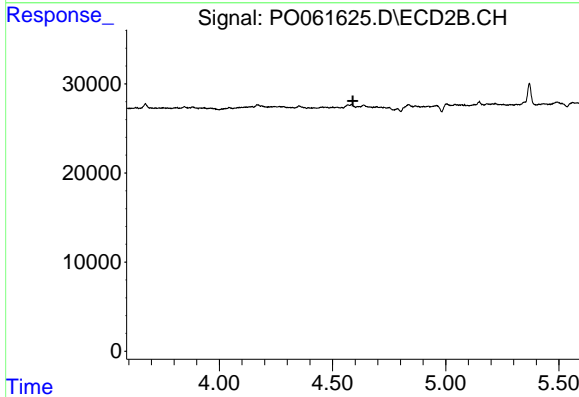
#2 Decachlorobiphenyl
 R.T.: 8.382 min
 Delta R.T.: -0.027 min
 Response: 8692
 Conc: 0.27 ng/ml



#3 AR-1016-1

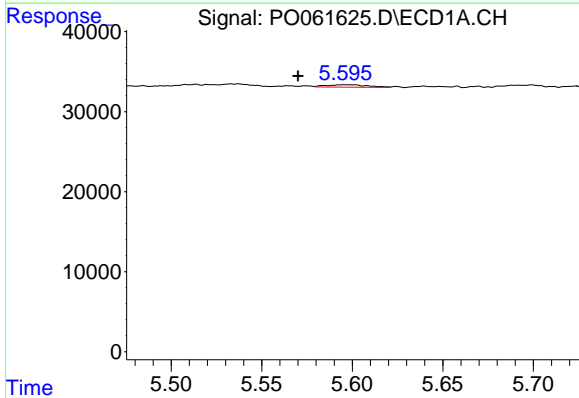
R.T.: 5.537 min
 Delta R.T.: -0.013 min
 Response: 3391
 Conc: 1.85 ng/ml

Instrument :
 ECD_O
 ClientSampleId :



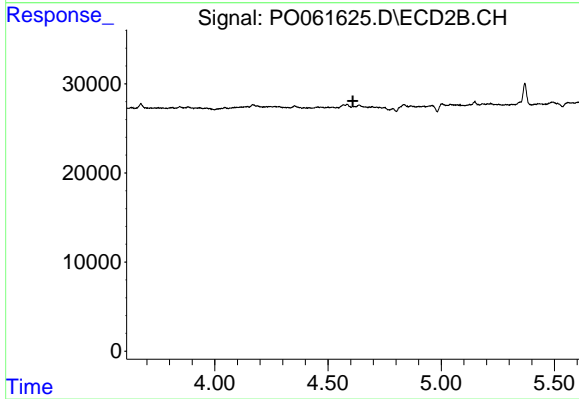
#3 AR-1016-1

R.T.: 0.000 min
 Exp R.T. : 4.590 min
 Response: 0
 Conc: N.D.



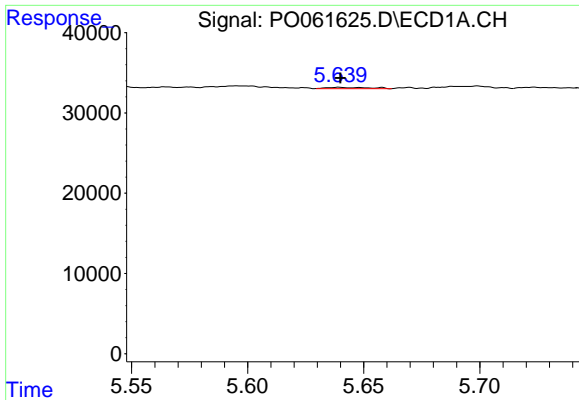
#4 AR-1016-2

R.T.: 5.596 min
 Delta R.T.: 0.026 min
 Response: 4744
 Conc: 1.84 ng/ml



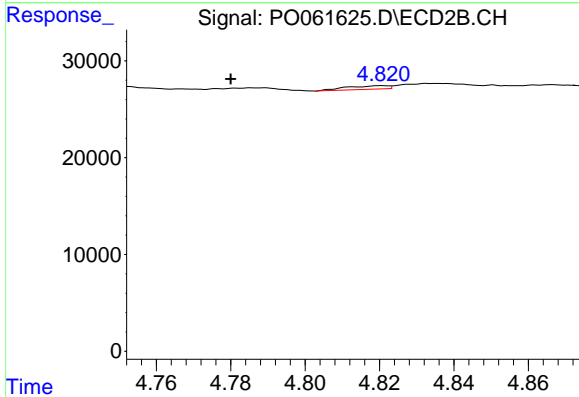
#4 AR-1016-2

R.T.: 0.000 min
 Exp R.T. : 4.610 min
 Response: 0
 Conc: N.D.

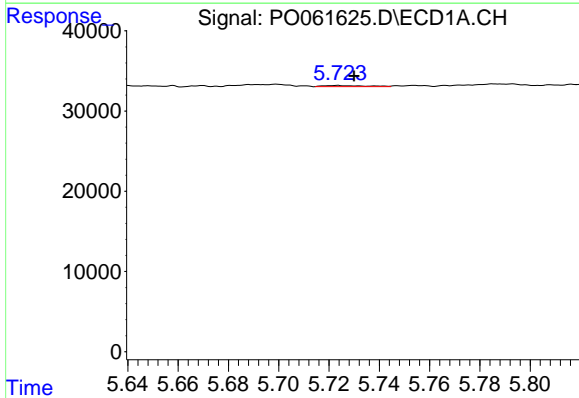


#5 AR-1016-3
 R.T.: 5.640 min
 Delta R.T.: 0.000 min
 Response: 2120
 Conc: 1.32 ng/ml

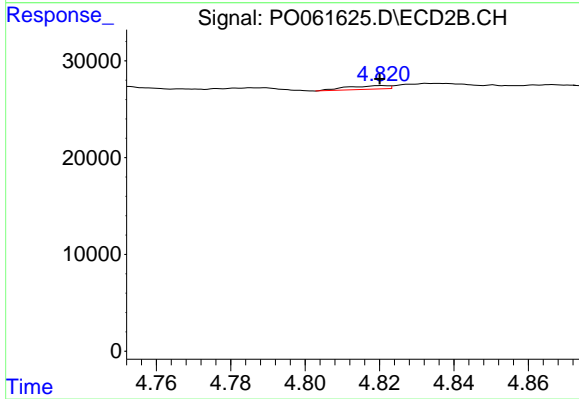
Instrument :
 ECD_O
 ClientSampleId :



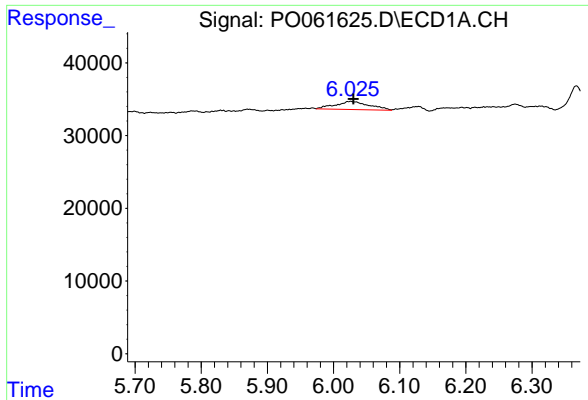
#5 AR-1016-3
 R.T.: 4.821 min
 Delta R.T.: 0.041 min
 Response: 2858
 Conc: 2.85 ng/ml



#6 AR-1016-4
 R.T.: 5.723 min
 Delta R.T.: -0.007 min
 Response: 1633
 Conc: 1.22 ng/ml

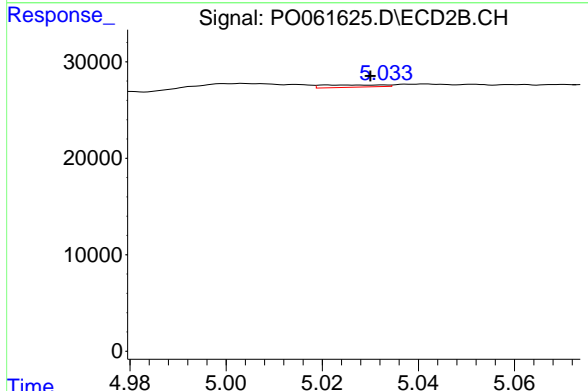


#6 AR-1016-4
 R.T.: 4.821 min
 Delta R.T.: 0.000 min
 Response: 2858
 Conc: 3.30 ng/ml

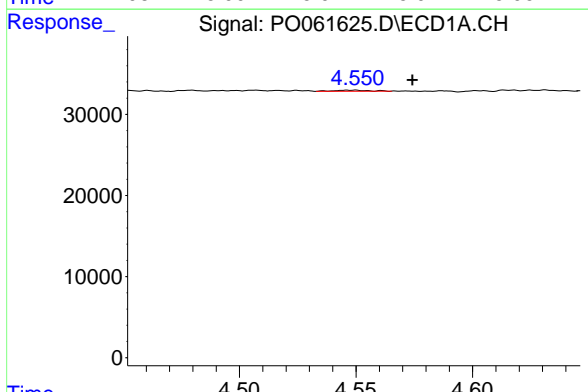


#7 AR-1016-5
 R.T.: 6.026 min
 Delta R.T.: -0.004 min
 Response: 39824
 Conc: 29.04 ng/ml

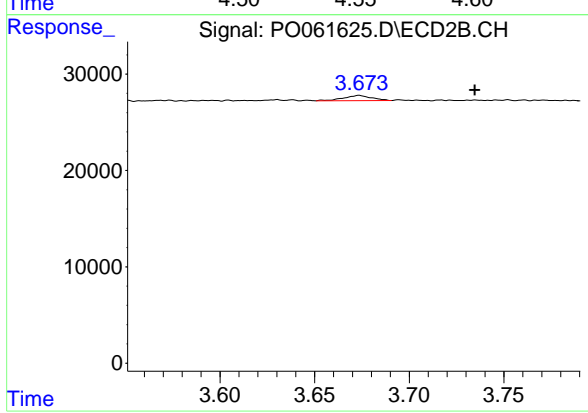
Instrument :
 ECD_O
 ClientSampleId :



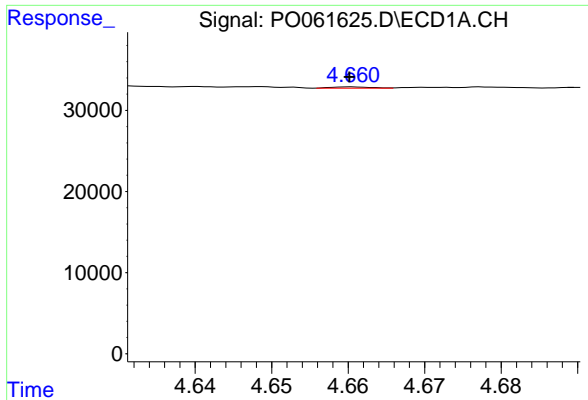
#7 AR-1016-5
 R.T.: 5.021 min
 Delta R.T.: -0.009 min
 Response: 2116
 Conc: 1.85 ng/ml



#8 AR-1221-1
 R.T.: 4.549 min
 Delta R.T.: -0.025 min
 Response: 1358
 Conc: 2.94 ng/ml



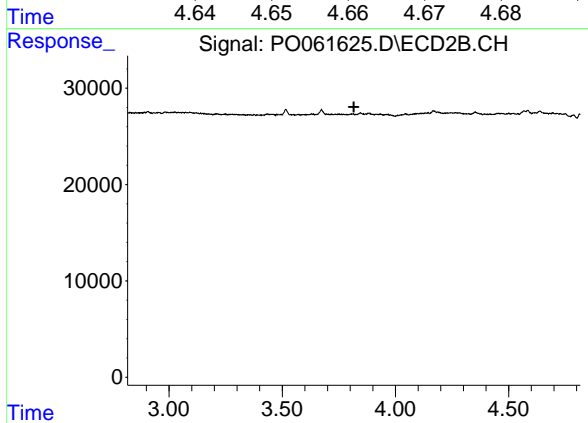
#8 AR-1221-1
 R.T.: 3.674 min
 Delta R.T.: -0.061 min
 Response: 5605
 Conc: 14.16 ng/ml



#9 AR-1221-2

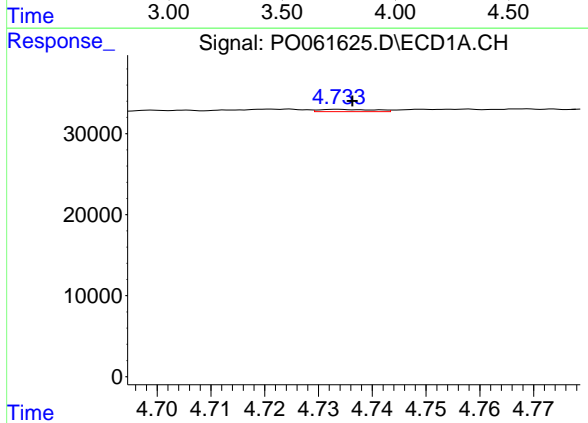
R.T.: 4.661 min
 Delta R.T.: 0.000 min
 Response: 517
 Conc: 1.44 ng/ml

Instrument :
 ECD_O
 ClientSampleId :



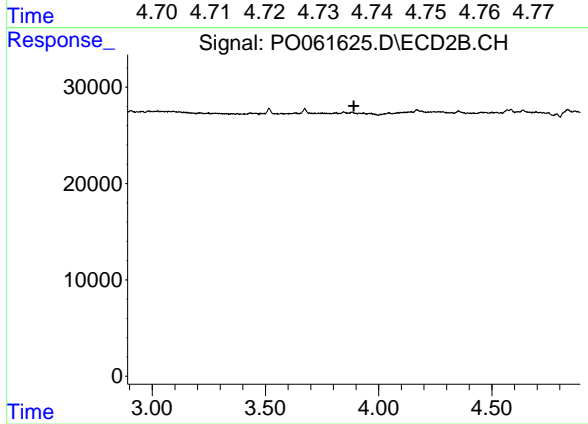
#9 AR-1221-2

R.T.: 0.000 min
 Exp R.T. : 3.817 min
 Response: 0
 Conc: N.D.



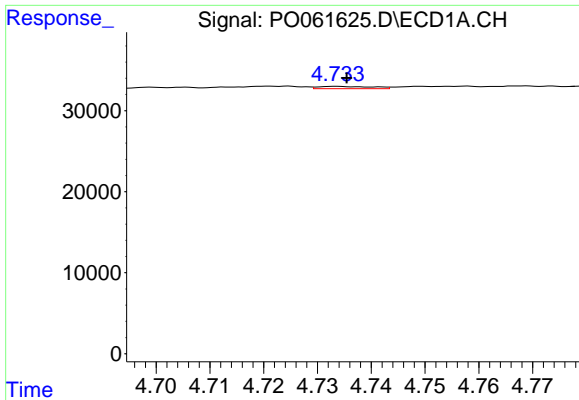
#10 AR-1221-3

R.T.: 4.734 min
 Delta R.T.: -0.003 min
 Response: 1992
 Conc: 1.75 ng/ml



#10 AR-1221-3

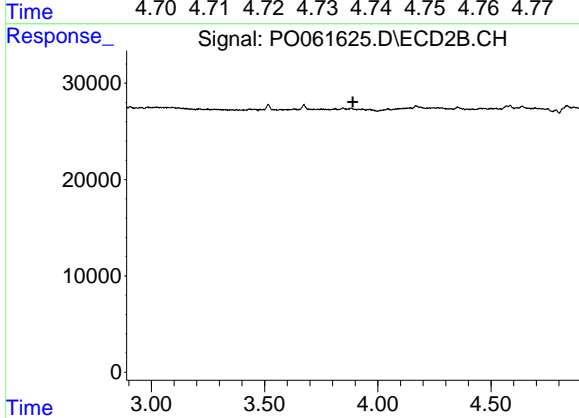
R.T.: 0.000 min
 Exp R.T. : 3.891 min
 Response: 0
 Conc: N.D.



#11 AR-1232-1

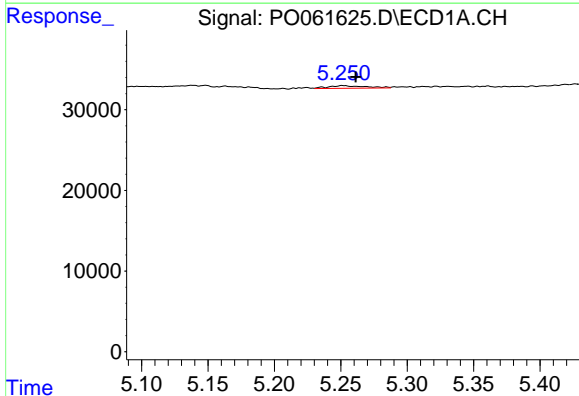
R.T.: 4.734 min
 Delta R.T.: -0.002 min
 Response: 1992
 Conc: 1.42 ng/ml

Instrument :
 ECD_O
 ClientSampleId :



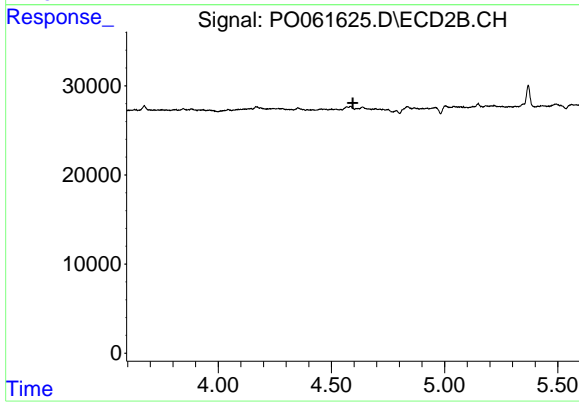
#11 AR-1232-1

R.T.: 0.000 min
 Exp R.T. : 3.890 min
 Response: 0
 Conc: N.D.



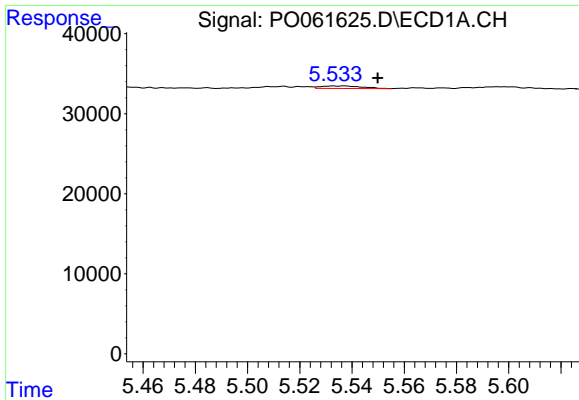
#12 AR-1232-2

R.T.: 5.252 min
 Delta R.T.: -0.010 min
 Response: 6486
 Conc: 8.27 ng/ml



#12 AR-1232-2

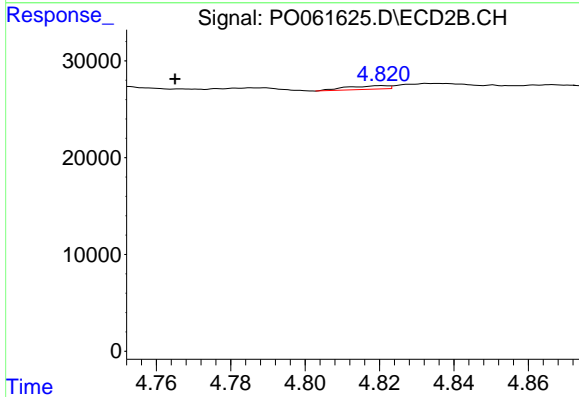
R.T.: 0.000 min
 Exp R.T. : 4.595 min
 Response: 0
 Conc: N.D.



#13 AR-1232-3

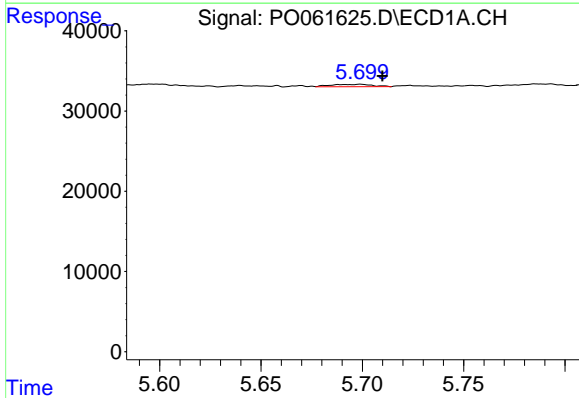
R.T.: 5.537 min
 Delta R.T.: -0.013 min
 Response: 3391
 Conc: 1.98 ng/ml

Instrument :
 ECD_O
 ClientSampleId :



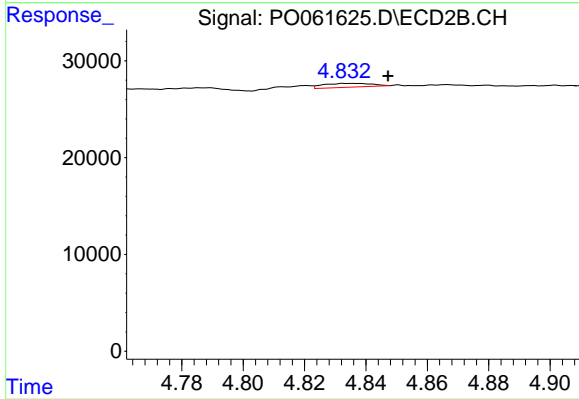
#13 AR-1232-3

R.T.: 4.821 min
 Delta R.T.: 0.056 min
 Response: 2858
 Conc: 4.33 ng/ml



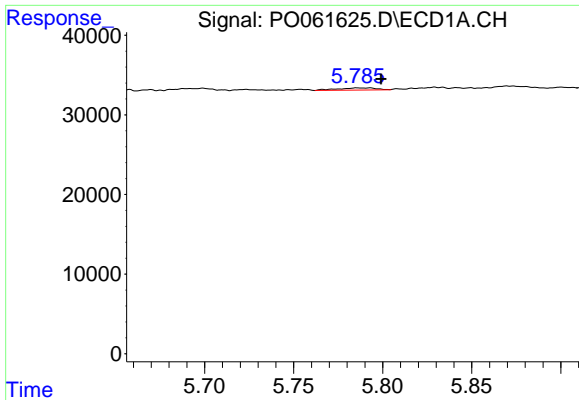
#14 AR-1232-4

R.T.: 5.699 min
 Delta R.T.: -0.011 min
 Response: 4402
 Conc: 4.98 ng/ml



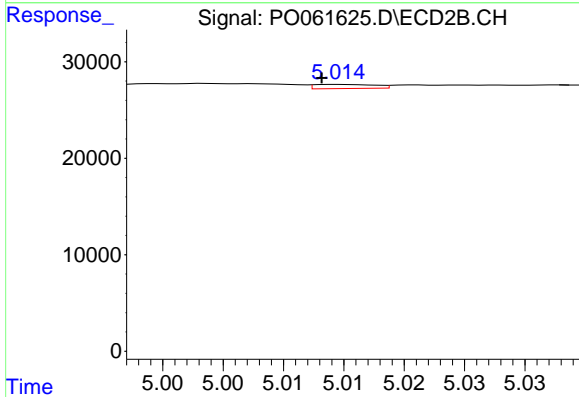
#14 AR-1232-4

R.T.: 4.833 min
 Delta R.T.: -0.014 min
 Response: 4318
 Conc: 6.85 ng/ml

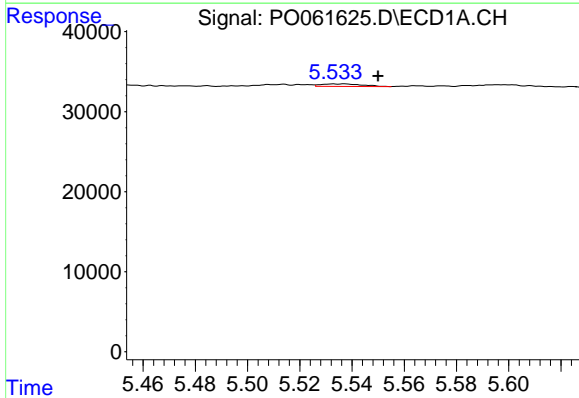


#15 AR-1232-5
 R.T.: 5.792 min
 Delta R.T.: -0.007 min
 Response: 4060
 Conc: 5.86 ng/ml

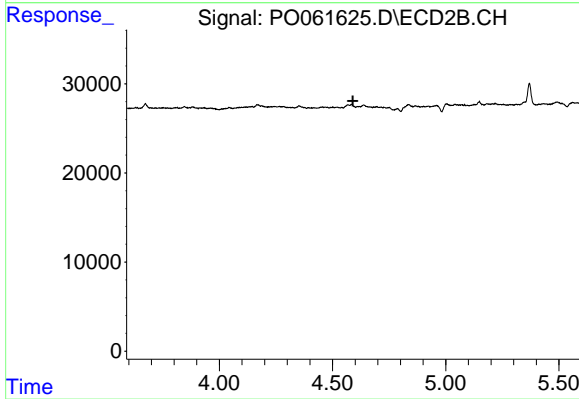
Instrument :
 ECD_O
 ClientSampleId :



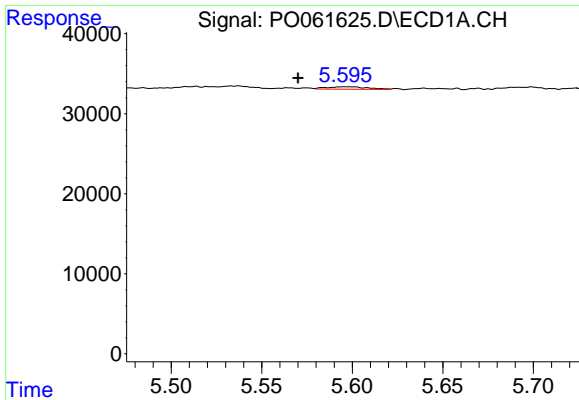
#15 AR-1232-5
 R.T.: 5.015 min
 Delta R.T.: 0.002 min
 Response: 1472
 Conc: 2.15 ng/ml



#16 AR-1242-1
 R.T.: 5.537 min
 Delta R.T.: -0.013 min
 Response: 3391
 Conc: 2.39 ng/ml



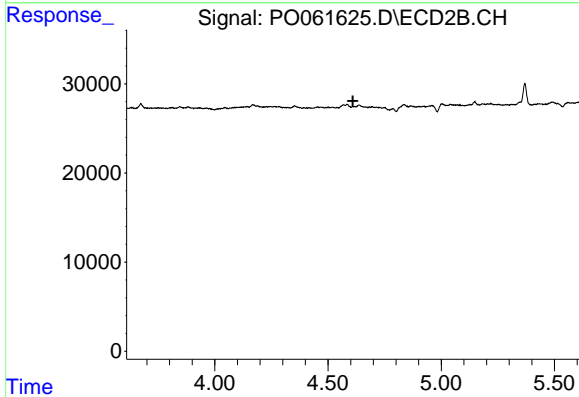
#16 AR-1242-1
 R.T.: 0.000 min
 Exp R.T.: 4.590 min
 Response: 0
 Conc: N.D.



#17 AR-1242-2

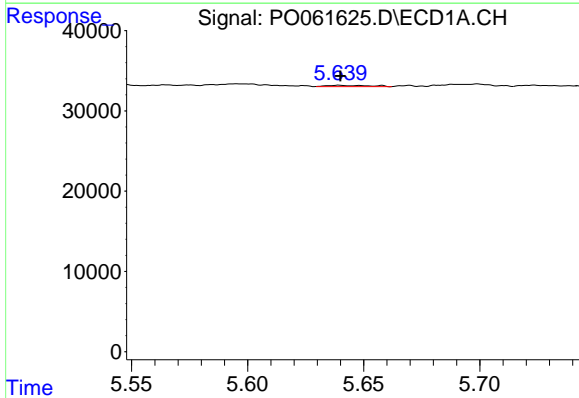
R.T.: 5.596 min
 Delta R.T.: 0.026 min
 Response: 4744
 Conc: 2.36 ng/ml

Instrument :
 ECD_O
 ClientSampled :



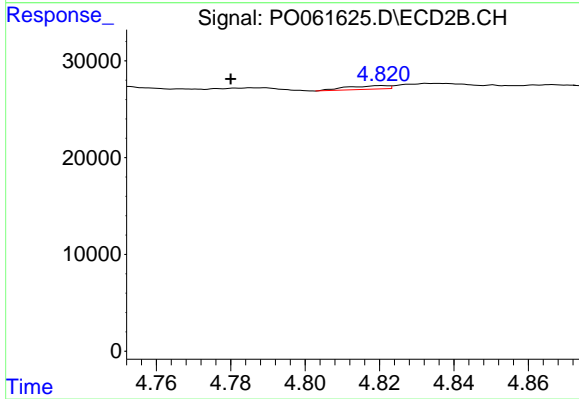
#17 AR-1242-2

R.T.: 0.000 min
 Exp R.T. : 4.610 min
 Response: 0
 Conc: N.D.



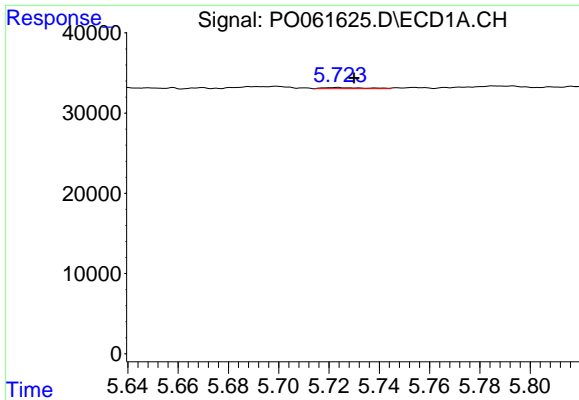
#18 AR-1242-3

R.T.: 5.640 min
 Delta R.T.: 0.000 min
 Response: 2120
 Conc: 1.68 ng/ml



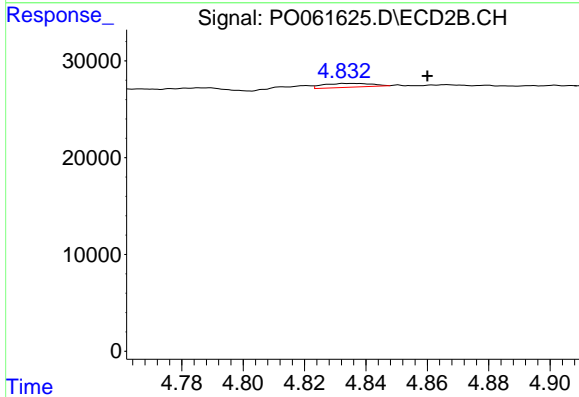
#18 AR-1242-3

R.T.: 4.821 min
 Delta R.T.: 0.041 min
 Response: 2858
 Conc: 3.66 ng/ml

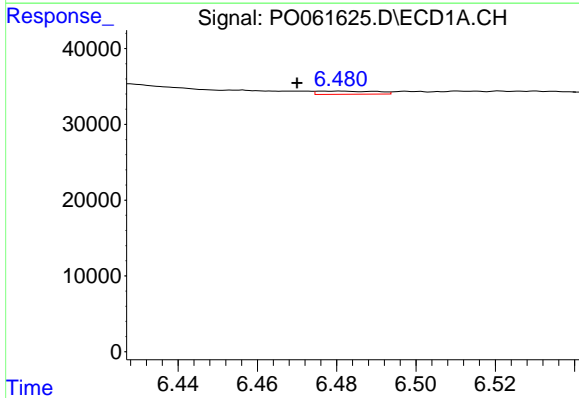


#19 AR-1242-4
 R.T.: 5.723 min
 Delta R.T.: -0.007 min
 Response: 1633
 Conc: 1.55 ng/ml

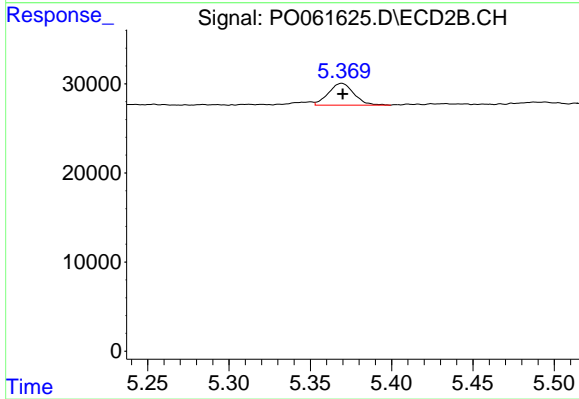
Instrument :
 ECD_O
 ClientSampleId :



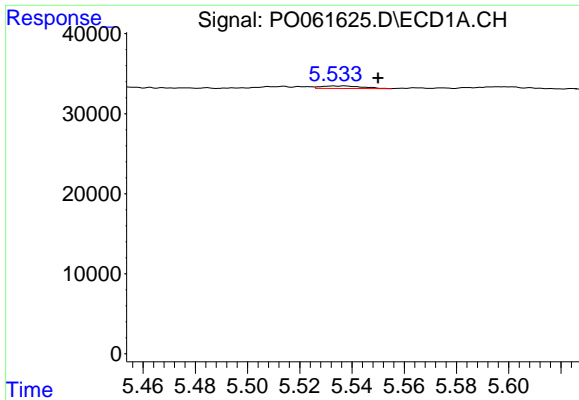
#19 AR-1242-4
 R.T.: 4.833 min
 Delta R.T.: -0.027 min
 Response: 4318
 Conc: 5.26 ng/ml



#20 AR-1242-5
 R.T.: 6.481 min
 Delta R.T.: 0.011 min
 Response: 4339
 Conc: 3.24 ng/ml



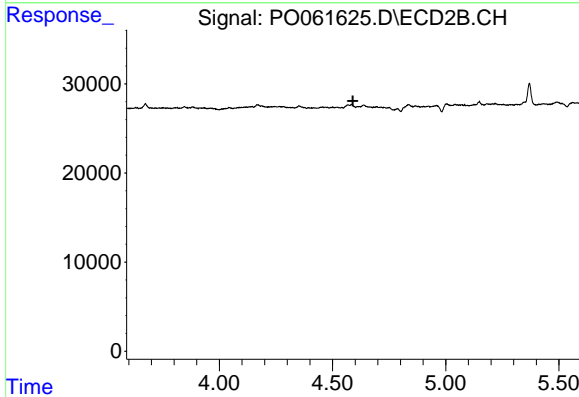
#20 AR-1242-5
 R.T.: 5.369 min
 Delta R.T.: 0.000 min
 Response: 26794
 Conc: 25.01 ng/ml



#21 AR-1248-1

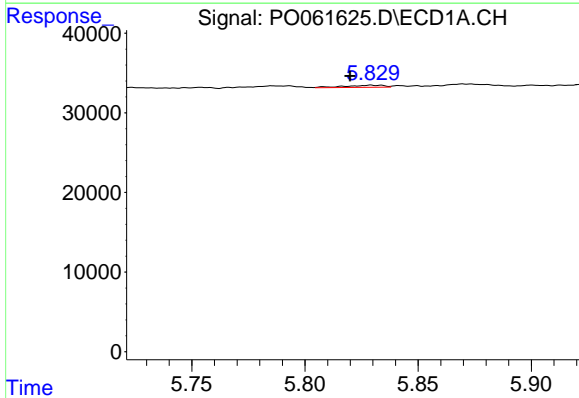
R.T.: 5.537 min
 Delta R.T.: -0.013 min
 Response: 3391
 Conc: 2.89 ng/ml

Instrument :
 ECD_O
 ClientSampleId :



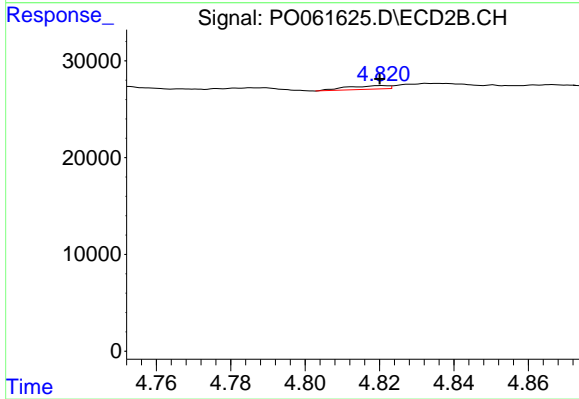
#21 AR-1248-1

R.T.: 0.000 min
 Exp R.T. : 4.590 min
 Response: 0
 Conc: N.D.



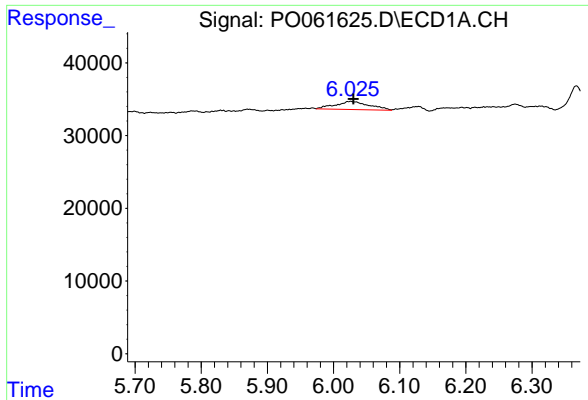
#22 AR-1248-2

R.T.: 5.829 min
 Delta R.T.: 0.009 min
 Response: 3074
 Conc: 1.82 ng/ml



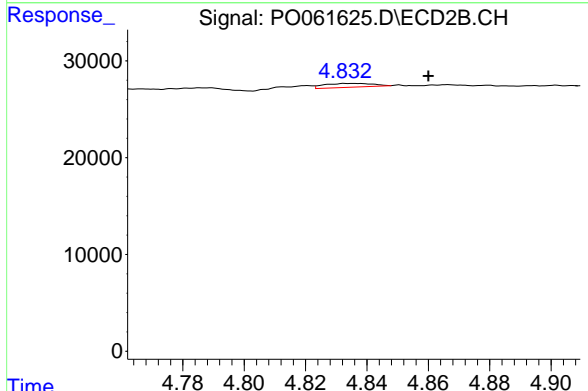
#22 AR-1248-2

R.T.: 4.821 min
 Delta R.T.: 0.000 min
 Response: 2858
 Conc: 2.43 ng/ml

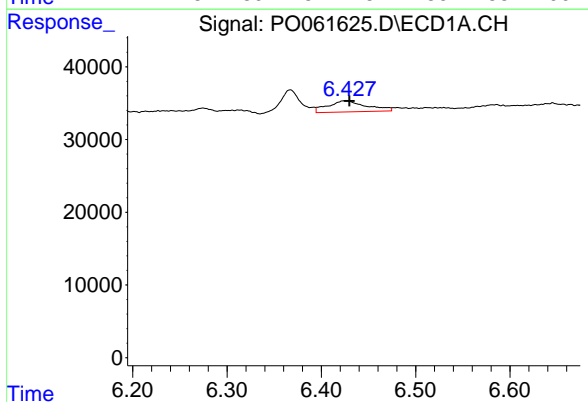


#23 AR-1248-3
 R.T.: 6.026 min
 Delta R.T.: -0.004 min
 Response: 39824
 Conc: 21.31 ng/ml

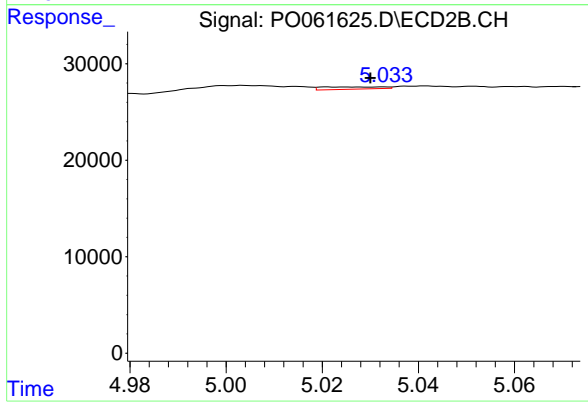
Instrument :
 ECD_O
 ClientSampleId :



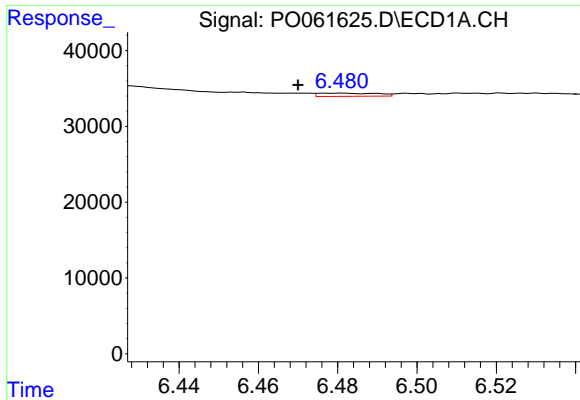
#23 AR-1248-3
 R.T.: 4.833 min
 Delta R.T.: -0.027 min
 Response: 4318
 Conc: 3.48 ng/ml



#24 AR-1248-4
 R.T.: 6.427 min
 Delta R.T.: -0.003 min
 Response: 43570
 Conc: 18.44 ng/ml



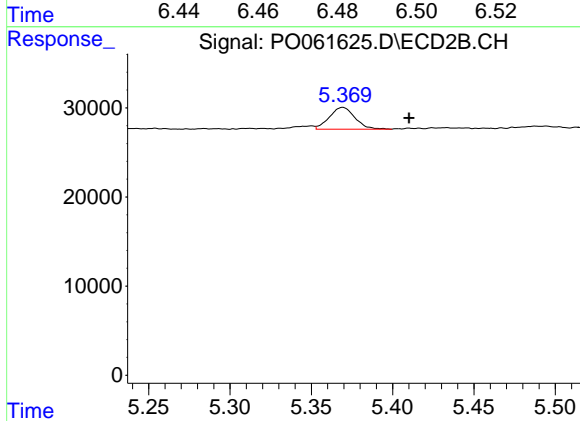
#24 AR-1248-4
 R.T.: 5.021 min
 Delta R.T.: -0.009 min
 Response: 2116
 Conc: 1.41 ng/ml



#25 AR-1248-5

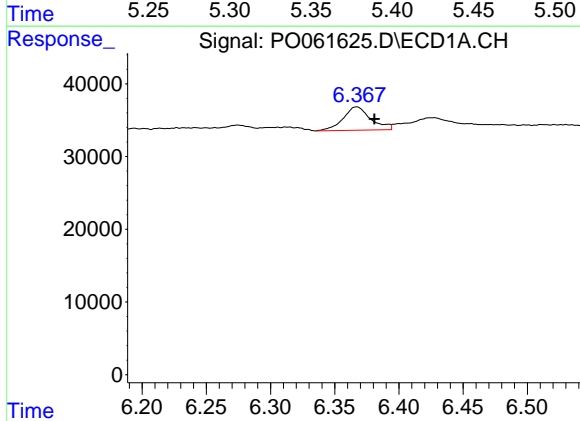
R.T.: 6.481 min
 Delta R.T.: 0.011 min
 Response: 4339
 Conc: 1.91 ng/ml

Instrument :
 ECD_O
 ClientSampleId :



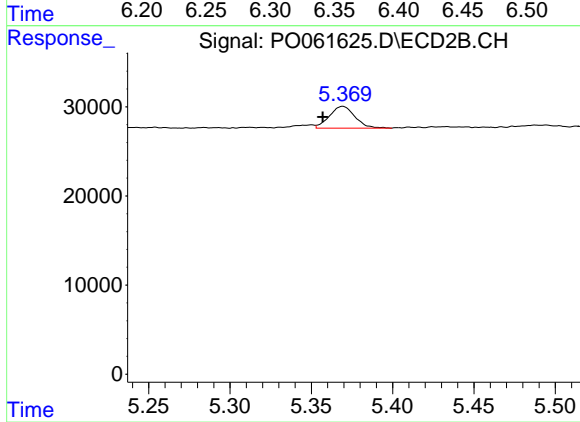
#25 AR-1248-5

R.T.: 5.369 min
 Delta R.T.: -0.041 min
 Response: 26794
 Conc: 17.46 ng/ml



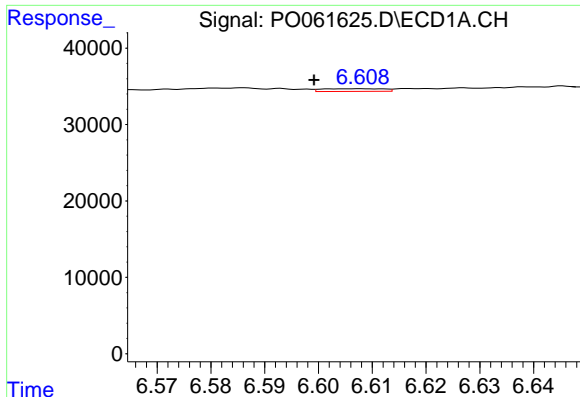
#26 AR-1254-1

R.T.: 6.367 min
 Delta R.T.: -0.014 min
 Response: 48137
 Conc: 21.10 ng/ml



#26 AR-1254-1

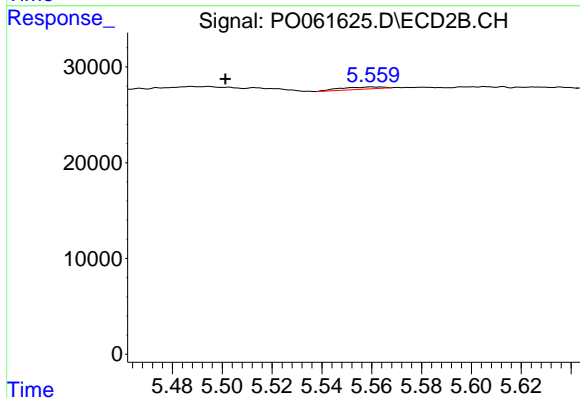
R.T.: 5.369 min
 Delta R.T.: 0.012 min
 Response: 26794
 Conc: 12.22 ng/ml



#27 AR-1254-2

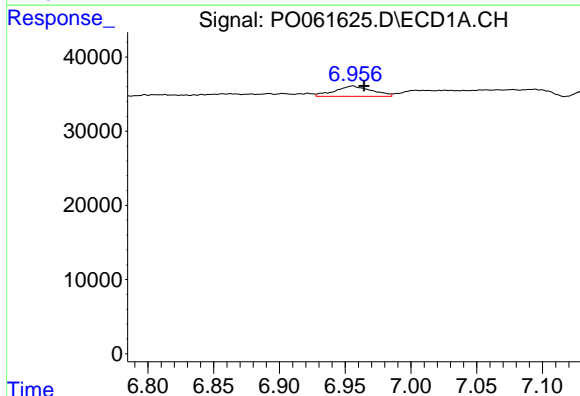
R.T.: 6.608 min
 Delta R.T.: 0.009 min
 Response: 2737
 Conc: 0.76 ng/ml

Instrument :
 ECD_O
 ClientSampleId :



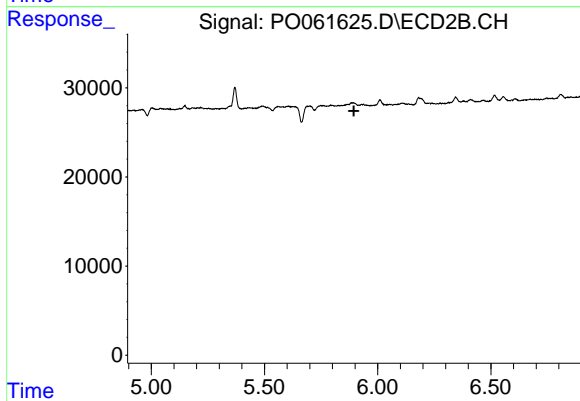
#27 AR-1254-2

R.T.: 5.560 min
 Delta R.T.: 0.059 min
 Response: 2730
 Conc: 1.39 ng/ml



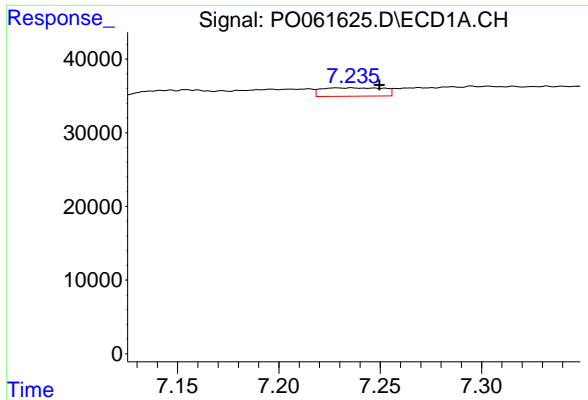
#28 AR-1254-3

R.T.: 6.956 min
 Delta R.T.: -0.009 min
 Response: 27291
 Conc: 6.98 ng/ml



#28 AR-1254-3

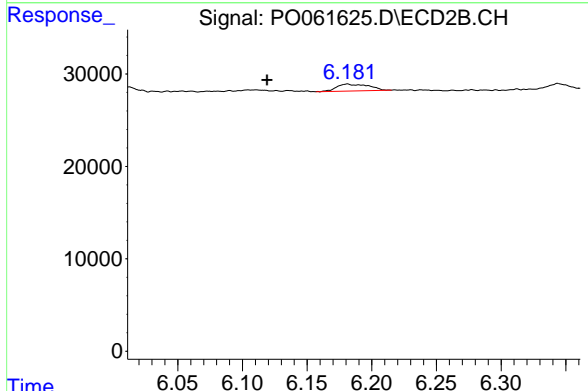
R.T.: 0.000 min
 Exp R.T. : 5.895 min
 Response: 0
 Conc: N.D.



#29 AR-1254-4

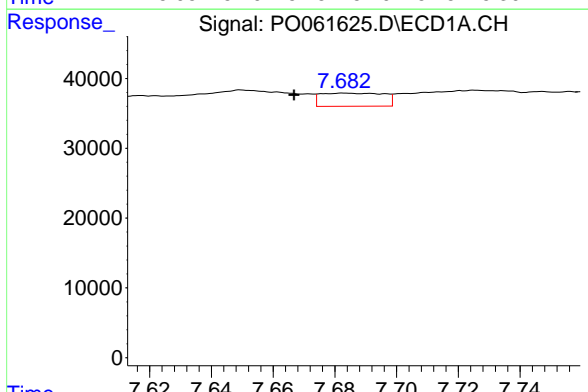
R.T.: 7.236 min
 Delta R.T.: -0.014 min
 Response: 24310
 Conc: 8.03 ng/ml

Instrument :
 ECD_O
 ClientSampleId :



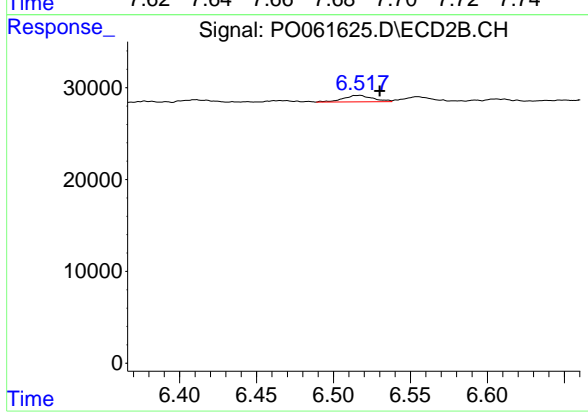
#29 AR-1254-4

R.T.: 6.181 min
 Delta R.T.: 0.062 min
 Response: 12661
 Conc: 6.24 ng/ml



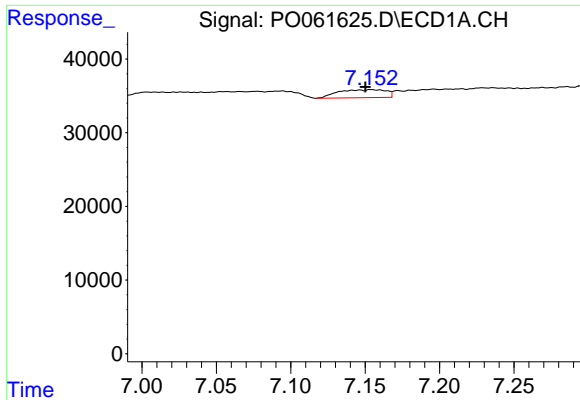
#30 AR-1254-5

R.T.: 7.683 min
 Delta R.T.: 0.016 min
 Response: 26792
 Conc: 8.53 ng/ml



#30 AR-1254-5

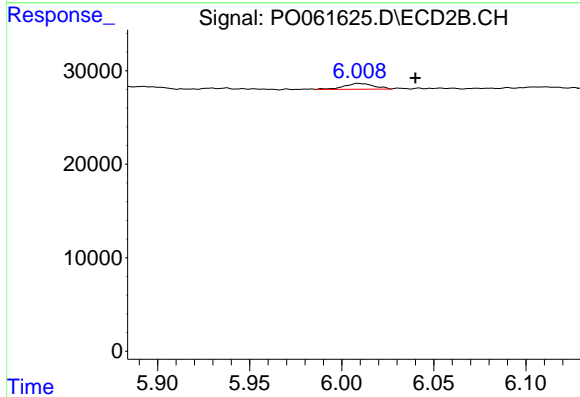
R.T.: 6.517 min
 Delta R.T.: -0.013 min
 Response: 9265
 Conc: 3.28 ng/ml



#31 AR-1260-1

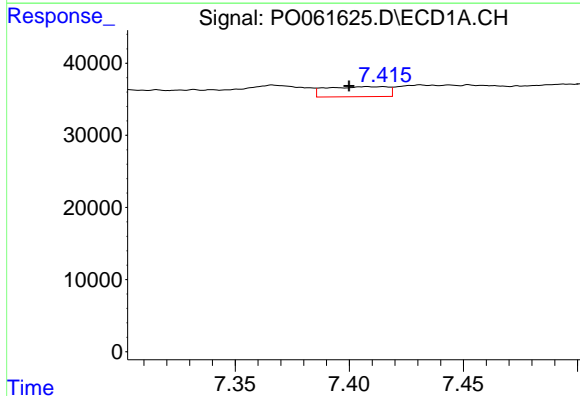
R.T.: 7.154 min
 Delta R.T.: 0.004 min
 Response: 24270
 Conc: 9.30 ng/ml

Instrument :
 ECD_O
 ClientSampleId :



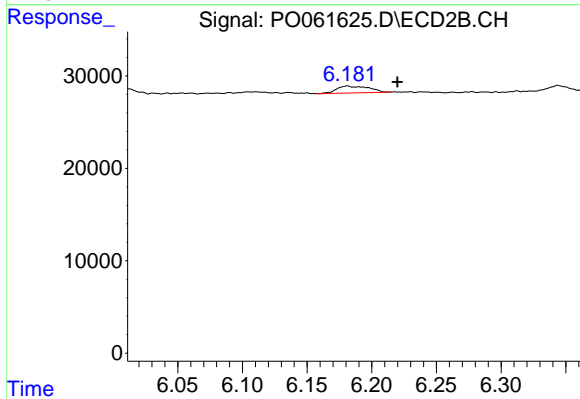
#31 AR-1260-1

R.T.: 6.009 min
 Delta R.T.: -0.031 min
 Response: 6958
 Conc: 3.41 ng/ml



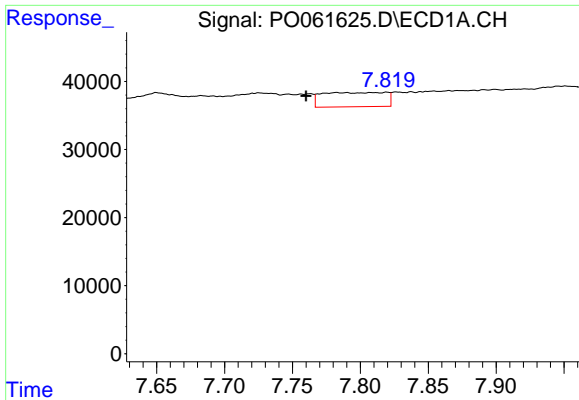
#32 AR-1260-2

R.T.: 7.408 min
 Delta R.T.: 0.008 min
 Response: 26044
 Conc: 8.17 ng/ml



#32 AR-1260-2

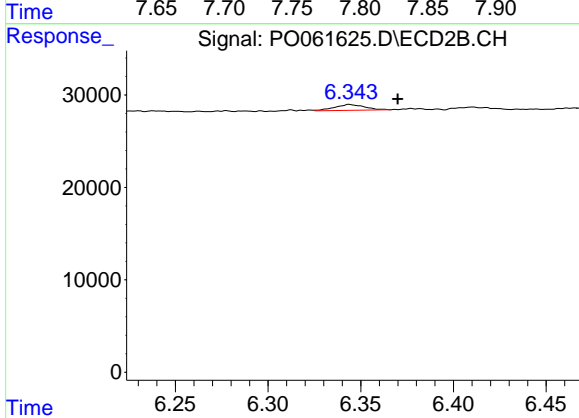
R.T.: 6.181 min
 Delta R.T.: -0.039 min
 Response: 12661
 Conc: 5.27 ng/ml



#33 AR-1260-3

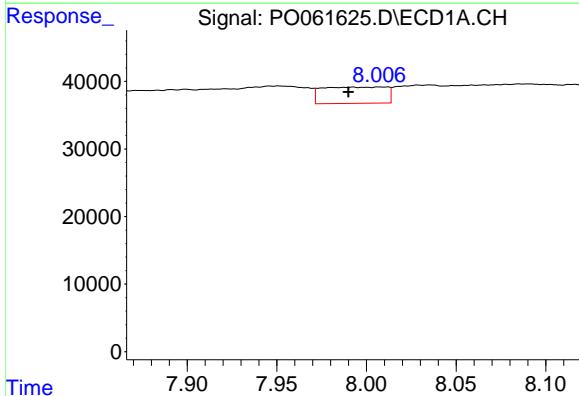
R.T.: 7.783 min
 Delta R.T.: 0.023 min
 Response: 67753
 Conc: 28.21 ng/ml

Instrument :
 ECD_O
 ClientSampleId :



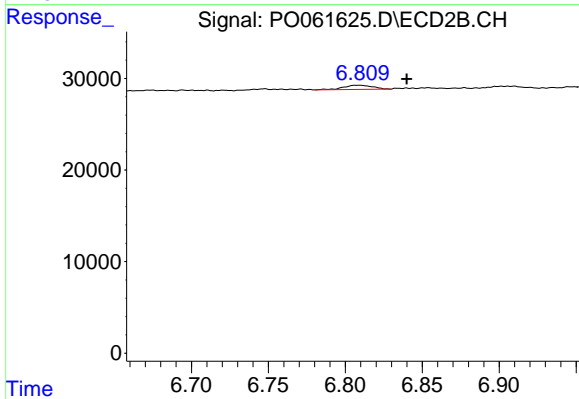
#33 AR-1260-3

R.T.: 6.344 min
 Delta R.T.: -0.026 min
 Response: 7233
 Conc: 3.21 ng/ml



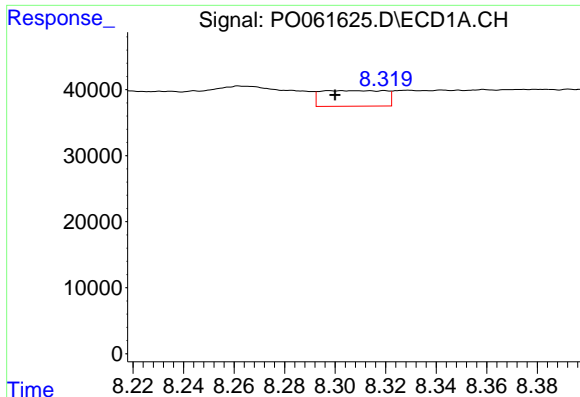
#34 AR-1260-4

R.T.: 7.992 min
 Delta R.T.: 0.002 min
 Response: 59694
 Conc: 22.34 ng/ml



#34 AR-1260-4

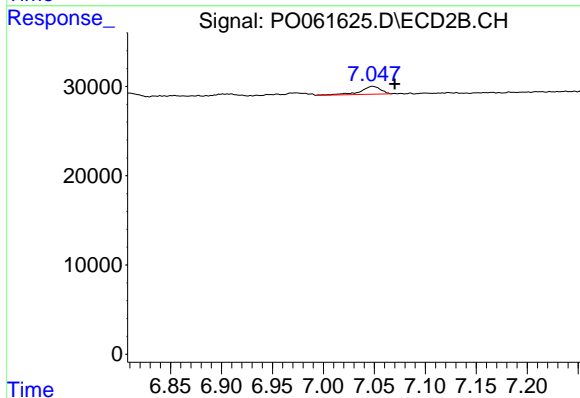
R.T.: 6.809 min
 Delta R.T.: -0.031 min
 Response: 6098
 Conc: 3.30 ng/ml



#35 AR-1260-5

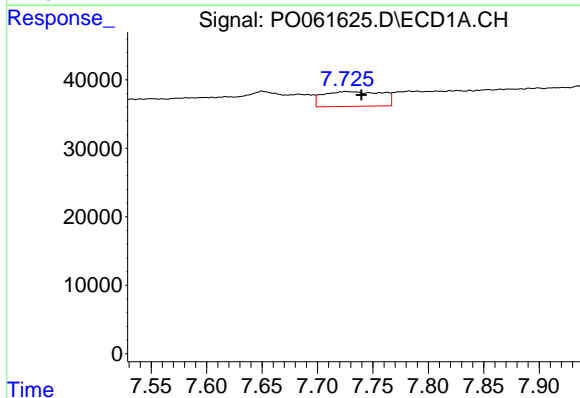
R.T.: 8.298 min
 Delta R.T.: -0.002 min
 Response: 41675
 Conc: 8.42 ng/ml

Instrument :
 ECD_O
 ClientSampled :



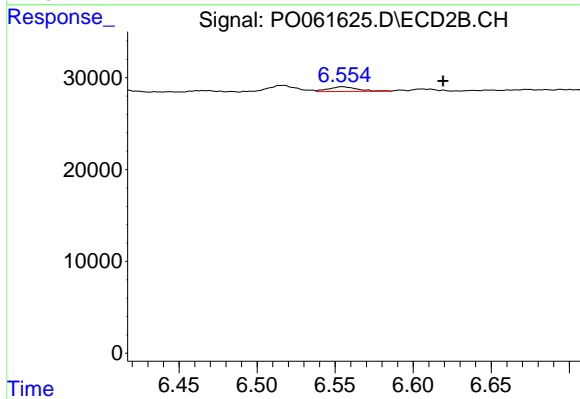
#35 AR-1260-5

R.T.: 7.048 min
 Delta R.T.: -0.022 min
 Response: 12011
 Conc: 3.08 ng/ml



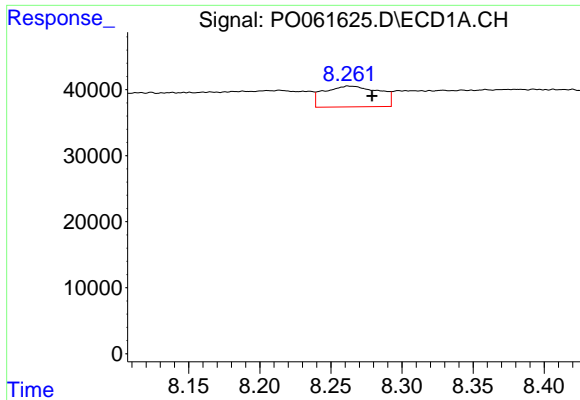
#36 AR-1262-1

R.T.: 7.726 min
 Delta R.T.: -0.014 min
 Response: 80603
 Conc: 21.04 ng/ml



#36 AR-1262-1

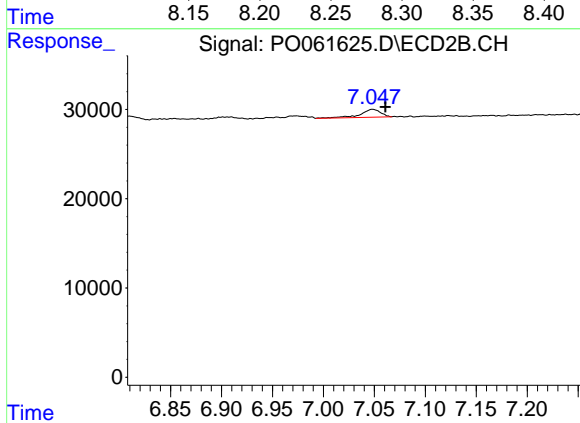
R.T.: 6.555 min
 Delta R.T.: -0.065 min
 Response: 6568
 Conc: 5.38 ng/ml



#37 AR-1262-2

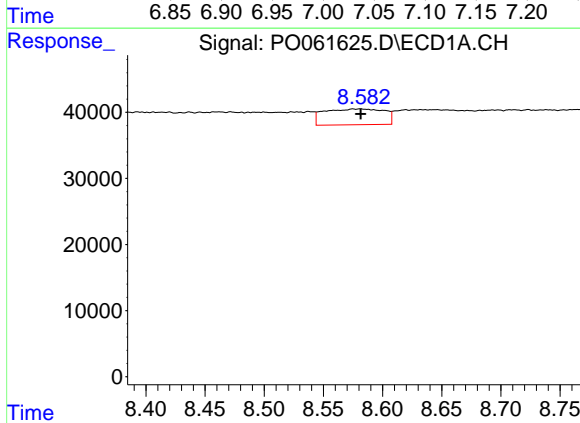
R.T.: 8.263 min
 Delta R.T.: -0.016 min
 Response: 85163
 Conc: 13.72 ng/ml

Instrument :
 ECD_O
 ClientSampled :



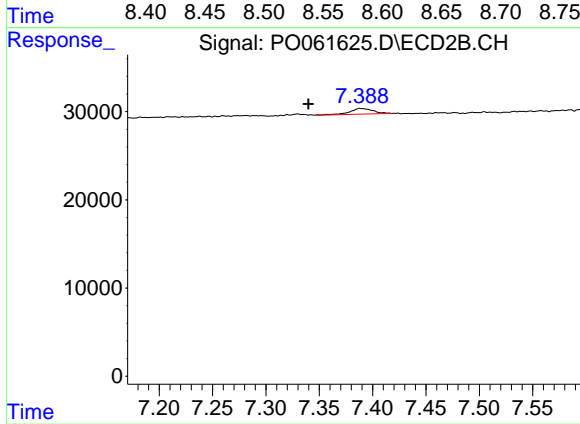
#37 AR-1262-2

R.T.: 7.048 min
 Delta R.T.: -0.013 min
 Response: 12011
 Conc: 2.61 ng/ml



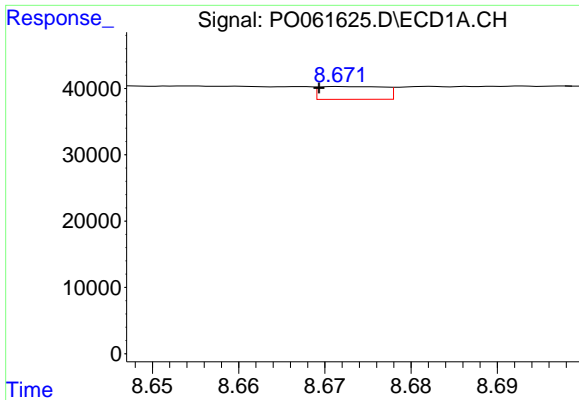
#38 AR-1262-3

R.T.: 8.582 min
 Delta R.T.: 0.000 min
 Response: 84344
 Conc: 20.29 ng/ml



#38 AR-1262-3

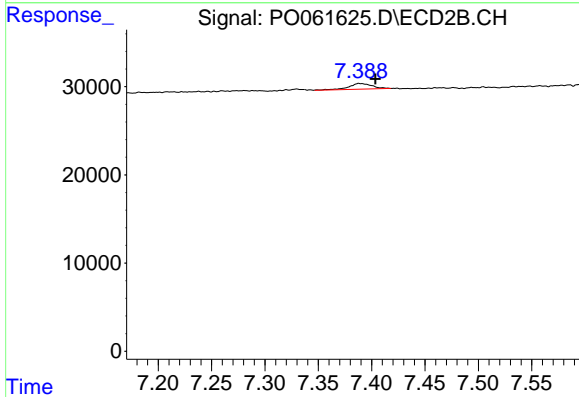
R.T.: 7.388 min
 Delta R.T.: 0.048 min
 Response: 9717
 Conc: 5.16 ng/ml



#39 AR-1262-4

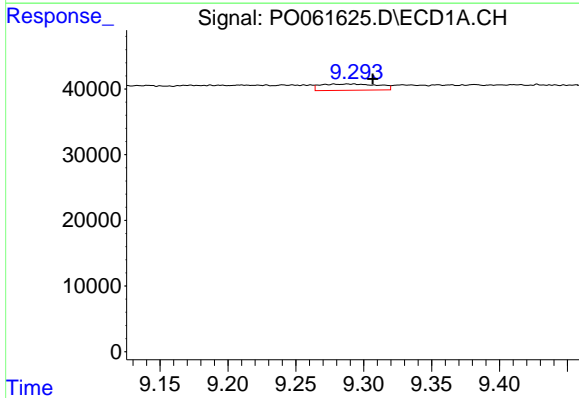
R.T.: 8.672 min
 Delta R.T.: 0.003 min
 Response: 10100
 Conc: 3.20 ng/ml

Instrument :
 ECD_O
 ClientSampleId :



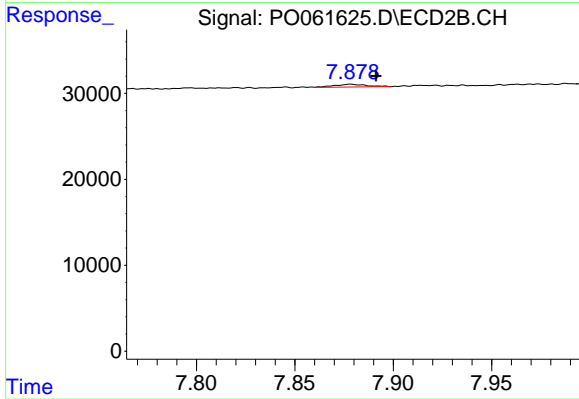
#39 AR-1262-4

R.T.: 7.388 min
 Delta R.T.: -0.015 min
 Response: 9717
 Conc: 2.89 ng/ml



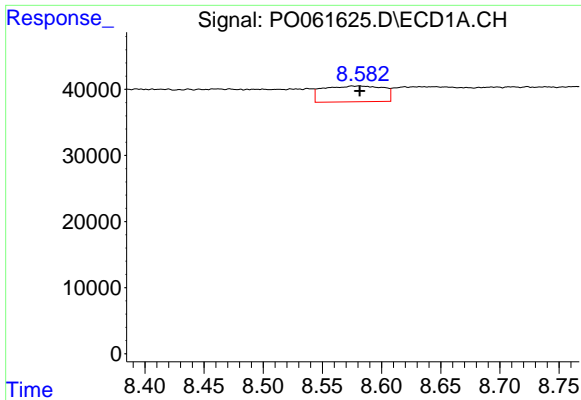
#40 AR-1262-5

R.T.: 9.292 min
 Delta R.T.: -0.014 min
 Response: 28095
 Conc: 13.82 ng/ml



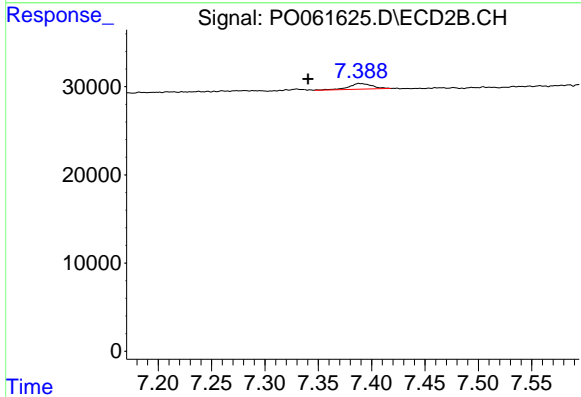
#40 AR-1262-5

R.T.: 7.878 min
 Delta R.T.: -0.013 min
 Response: 3779
 Conc: 2.49 ng/ml

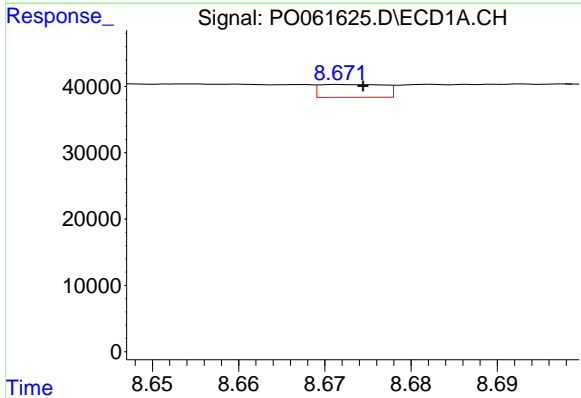


#41 AR-1268-1
 R.T.: 8.582 min
 Delta R.T.: 0.000 min
 Response: 84344
 Conc: 12.54 ng/ml

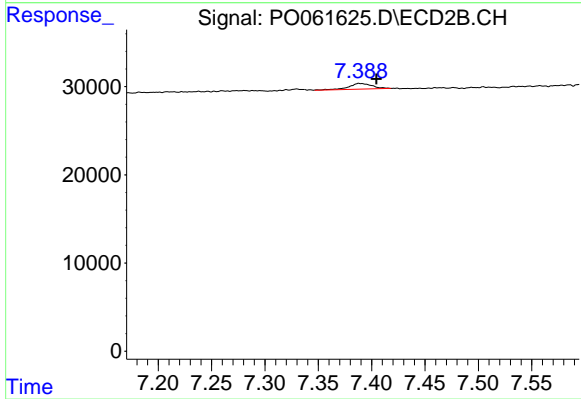
Instrument :
 ECD_O
 ClientSampled :



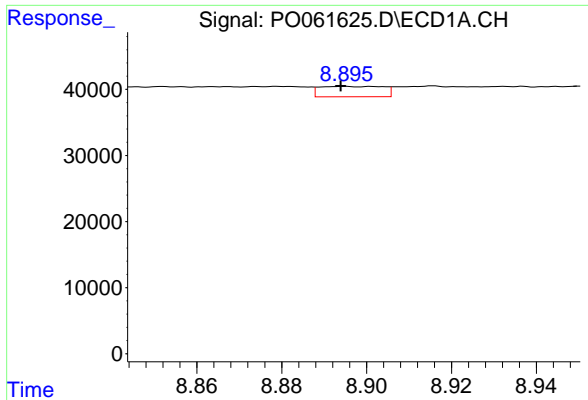
#41 AR-1268-1
 R.T.: 7.388 min
 Delta R.T.: 0.048 min
 Response: 9717
 Conc: 2.01 ng/ml



#42 AR-1268-2
 R.T.: 8.672 min
 Delta R.T.: -0.002 min
 Response: 10100
 Conc: 1.63 ng/ml

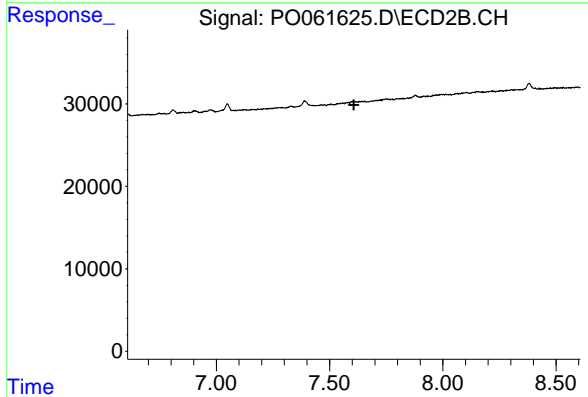


#42 AR-1268-2
 R.T.: 7.388 min
 Delta R.T.: -0.016 min
 Response: 9717
 Conc: 2.25 ng/ml

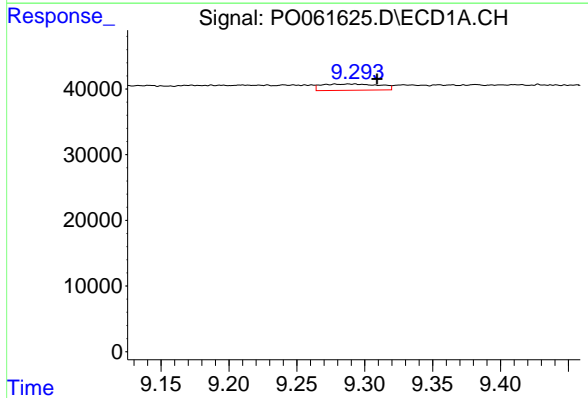


#43 AR-1268-3
 R.T.: 8.895 min
 Delta R.T.: 0.000 min
 Response: 16382
 Conc: 3.20 ng/ml

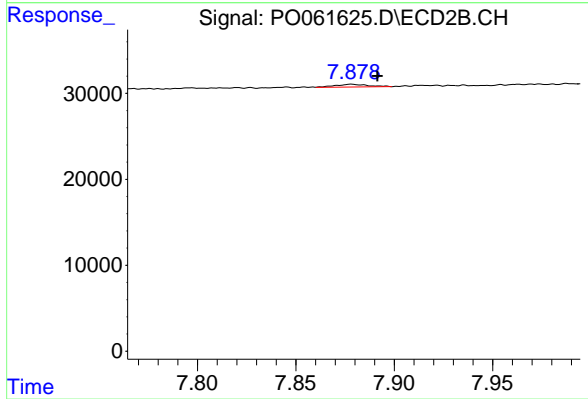
Instrument :
 ECD_O
 ClientSampleId :



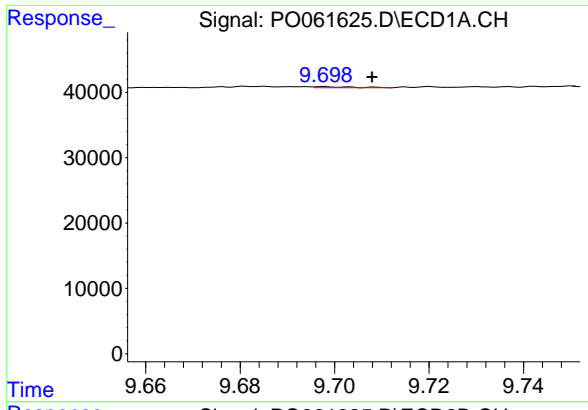
#43 AR-1268-3
 R.T.: 0.000 min
 Exp R.T. : 7.607 min
 Response: 0
 Conc: N.D.



#44 AR-1268-4
 R.T.: 9.292 min
 Delta R.T.: -0.017 min
 Response: 28095
 Conc: 12.85 ng/ml



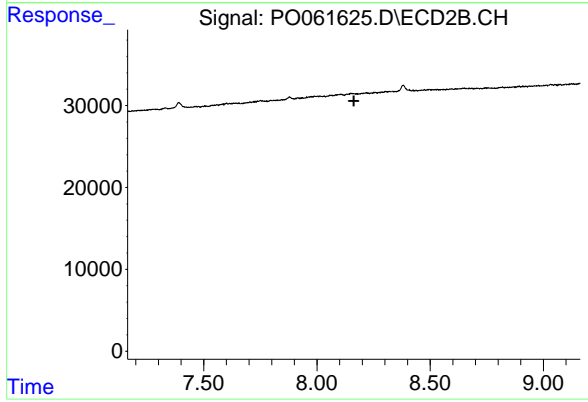
#44 AR-1268-4
 R.T.: 7.878 min
 Delta R.T.: -0.013 min
 Response: 3779
 Conc: 2.35 ng/ml



#45 AR-1268-5

R.T.: 9.697 min
Delta R.T.: -0.011 min
Response: 922
Conc: 0.06 ng/ml

Instrument :
ECD_O
ClientSampleId :



#45 AR-1268-5

R.T.: 0.000 min
Exp R.T. : 8.163 min
Response: 0
Conc: N.D.