

Data Path : Z:\pestpcbsrv\HPCHEM1\ECD_0\Data\PO100319\
 Data File : PO061627.D
 Signal(s) : Signal #1: ECD1A.CH Signal #2: ECD2B.CH
 Acq On : 03 Oct 2019 10:12
 Operator : HP/AJ
 Sample : AR1660CCC500
 Misc :
 ALS Vial : 3 Sample Multiplier: 1

Instrument :
 ECD_O
 ClientSampled :

Integration File signal 1: autoint1.e
 Integration File signal 2: autoint2.e
 Quant Time: Oct 04 01:22:57 2019
 Quant Method : Z:\pestpcbsrv\HPCHEM1\ECD_0\methods\PO100119.M
 Quant Title : GC EXTRACTABLES
 QLast Update : Tue Oct 01 15:34:04 2019
 Response via : Initial Calibration
 Integrator: ChemStation 6890 Scale Mode: Small noise peaks clipped

Volume Inj. : 2 µl
 Signal #1 Phase : ZB-MR1 Signal #2 Phase: ZB-MR2
 Signal #1 Info : 30Mx0.32mmx 0.50µ Signal #2 Info : 30M x 0.32mm x 0.25µm

Compound	RT#1	RT#2	Resp#1	Resp#2	ng/ml	ng/ml
System Monitoring Compounds						
1) SA Tetrachlo...	4.400	3.518	3618	1405481	0.088	43.460 #
2) SA Decachlor...	10.018	8.384	2218654	1465390	47.640	45.262
Target Compounds						
3) L1 AR-1016-1	5.544	4.587	1084672	758117	591.506	563.797
4) L1 AR-1016-2	5.544	4.617	1084672	59275	419.632	31.982 #
5) L1 AR-1016-3	5.605	4.799	671525	356998	418.021	356.385
6) L1 AR-1016-4	5.704	4.839	566963	437588	424.074	504.969
7) L1 AR-1016-5	6.037	5.043	251686	211395	183.521	185.200
8) L2 AR-1221-1	4.562	3.724	57352	52350	124.063	132.205
9) L2 AR-1221-2	4.654	3.808	87718	80692	244.325	261.652
10) L2 AR-1221-3	4.729	3.882	337551	275287	296.482	301.804
11) L3 AR-1232-1	4.729	3.882	337551	275287	241.383	245.180
12) L3 AR-1232-2	5.255	4.587	490395	758117	625.059	621.058
13) L3 AR-1232-3	5.544	4.757	1084672	420059	634.801	636.208
14) L3 AR-1232-4	5.704	4.839	566963	437588	640.791	694.195
15) L3 AR-1232-5	5.794	5.005	514558	489681	742.153	713.665
16) L4 AR-1242-1	5.544	4.587	1084672	758117	763.766	739.985
17) L4 AR-1242-2	5.544	4.617	1084672	59275	539.682	42.032 #
18) L4 AR-1242-3	5.605	4.799	671525	356998	532.165	457.171
19) L4 AR-1242-4	5.704	4.869	566963	156370	539.570	190.556 #
20) L4 AR-1242-5	6.490	5.386	15961	105288	11.934	98.286 #
21) L5 AR-1248-1	5.544	4.587	1084672	758117	923.268	847.232
22) L5 AR-1248-2	5.839	4.839	531771	437588	315.186	371.383
23) L5 AR-1248-3	6.037	4.869	251686	156370	134.675	125.975
24) L5 AR-1248-4	6.438	5.043	164046	211395	69.427	140.621 #
25) L5 AR-1248-5	6.490	5.386	15961	105288	7.039	68.629 #
26) L6 AR-1254-1	6.373	5.348	509730	380579	223.429	173.520
27) L6 AR-1254-2	6.590	5.491	546634	347173	151.293	177.085
28) L6 AR-1254-3	6.956	5.900	338766	687052	86.700	215.799 #
29) L6 AR-1254-4	7.241	6.109	266267	114831	87.917	56.599 #
30) L6 AR-1254-5	7.656	6.520	1789745	1208441	569.908	427.243 #
31) L7 AR-1260-1	7.118	6.013	1221398	886928	467.871	434.812
32) L7 AR-1260-2	7.418	6.199	464779	1070222	145.790	445.604 #
33) L7 AR-1260-3	7.732	6.348	1223368	1002692	509.341	445.025
34) L7 AR-1260-4	7.958	6.848	1394258	116198	521.793	62.938 #
35) L7 AR-1260-5	8.321	7.052	239258	1903256	48.353	488.813 #
36) L8 AR-1262-1	7.732	6.610	1223368	489197	319.294	400.772 #
37) L8 AR-1262-2	8.271	7.052	2617890	1903256	421.691	413.929
38) L8 AR-1262-3	8.589	7.330	1692030	466722	407.099	247.752 #
39) L8 AR-1262-4	8.643	7.393	1111427	1384531	352.066	411.973
40) L8 AR-1262-5	9.299	7.882	712504	483654	350.361	319.040
41) L9 AR-1268-1	8.589	7.330	1692030	466722	251.624	96.647 #

Data Path : Z:\pestpcbsrv\HPCHEM1\ECD_0\Data\PO100319\
 Data File : PO061627.D
 Signal(s) : Signal #1: ECD1A.CH Signal #2: ECD2B.CH
 Acq On : 03 Oct 2019 10:12
 Operator : HP/AJ
 Sample : AR1660CCC500
 Misc :
 ALS Vial : 3 Sample Multiplier: 1

Instrument :
 ECD_0
 ClientSampleId :

Integration File signal 1: autoint1.e
 Integration File signal 2: autoint2.e
 Quant Time: Oct 04 01:22:57 2019
 Quant Method : Z:\pestpcbsrv\HPCHEM1\ECD_0\methods\PO100119.M
 Quant Title : GC EXTRACTABLES
 QLast Update : Tue Oct 01 15:34:04 2019
 Response via : Initial Calibration
 Integrator: ChemStation 6890 Scale Mode: Small noise peaks clipped

Volume Inj. : 2 µl
 Signal #1 Phase : ZB-MR1 Signal #2 Phase: ZB-MR2
 Signal #1 Info : 30Mx0.32mmx 0.50µ Signal #2 Info : 30M x 0.32mm x 0.25µm

	Compound	RT#1	RT#2	Resp#1	Resp#2	ng/ml	ng/ml
42)	L9 AR-1268-2	8.643	7.393	1111427	1384531	179.482	321.250 #
43)	L9 AR-1268-3	8.883	7.596	95536	35133	18.688	9.802 #
44)	L9 AR-1268-4	9.299	7.882	712504	483654	325.852	300.521
45)	L9 AR-1268-5	9.695	8.152	190234	134297	12.663	13.355

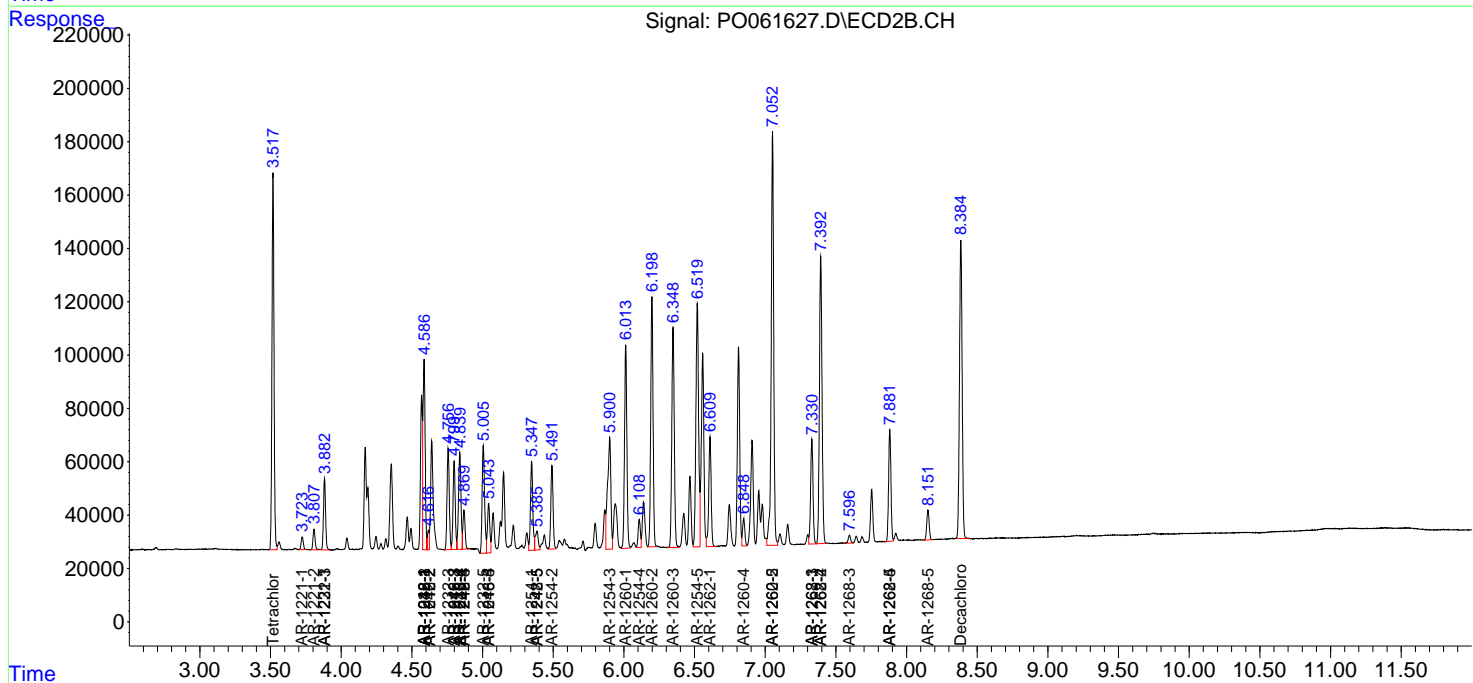
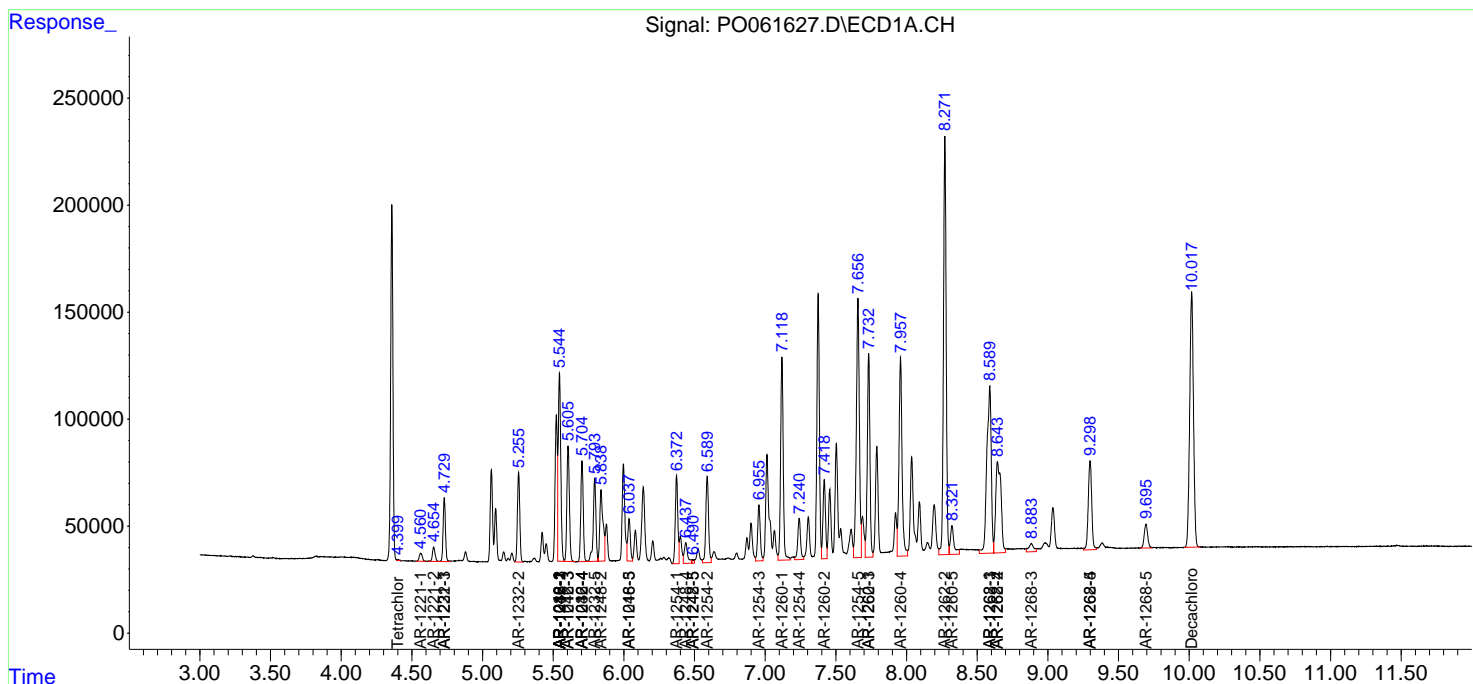
(f)=RT Delta > 1/2 Window (#)=Amounts differ by > 25% (m)=manual int.

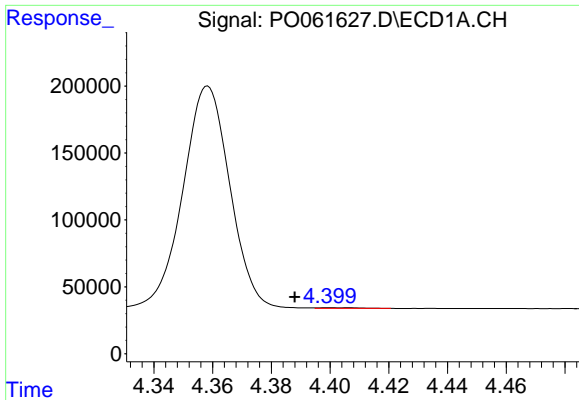
Data Path : Z:\pestpcbsrv\HPCHEM1\ECD_O\Data\PO100319\
 Data File : P0061627.D
 Signal(s) : Signal #1: ECD1A.CH Signal #2: ECD2B.CH
 Acq On : 03 Oct 2019 10:12
 Operator : HP/AJ
 Sample : AR1660CCC500
 Misc :
 ALS Vial : 3 Sample Multiplier: 1

Instrument :
 ECD_O
 ClientSampled :

Integration File signal 1: autoint1.e
 Integration File signal 2: autoint2.e
 Quant Time: Oct 04 01:22:57 2019
 Quant Method : Z:\pestpcbsrv\HPCHEM1\ECD_O\methods\PO100119.M
 Quant Title : GC EXTRACTABLES
 QLast Update : Tue Oct 01 15:34:04 2019
 Response via : Initial Calibration
 Integrator: ChemStation 6890 Scale Mode: Small noise peaks clipped

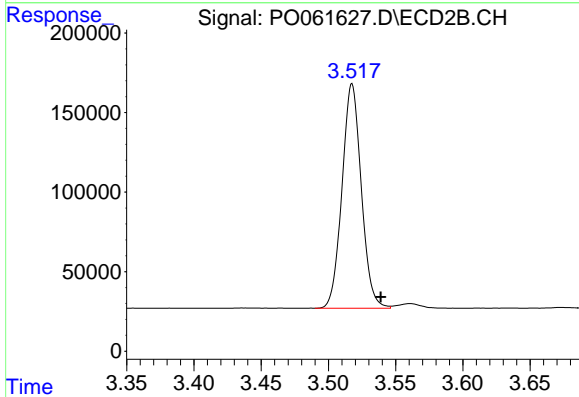
Volume Inj. : 2 µl
 Signal #1 Phase : ZB-MR1 Signal #2 Phase: ZB-MR2
 Signal #1 Info : 30Mx0.32mmx 0.50µ Signal #2 Info : 30M x 0.32mm x 0.25µm



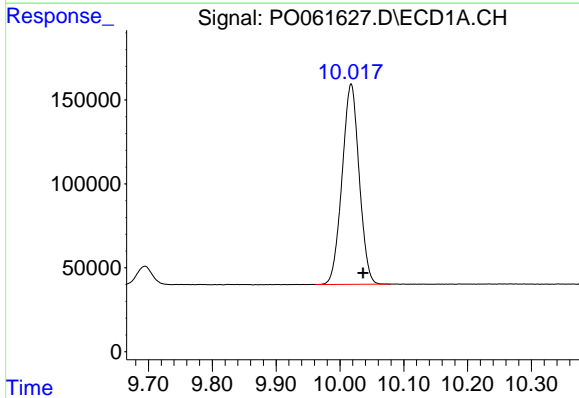


#1 Tetrachloro-m-xylene
 R.T.: 4.400 min
 Delta R.T.: 0.012 min
 Response: 3618
 Conc: 0.09 ng/ml

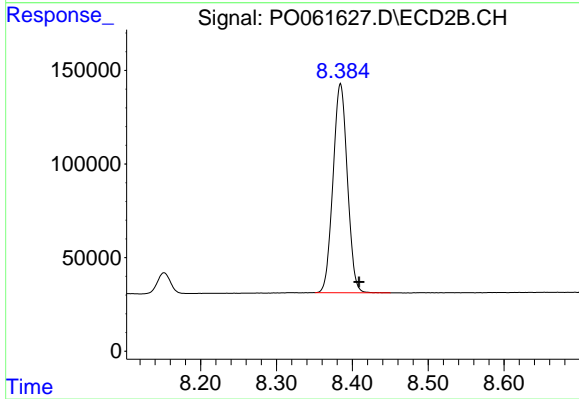
Instrument :
 ECD_O
 ClientSampleId :



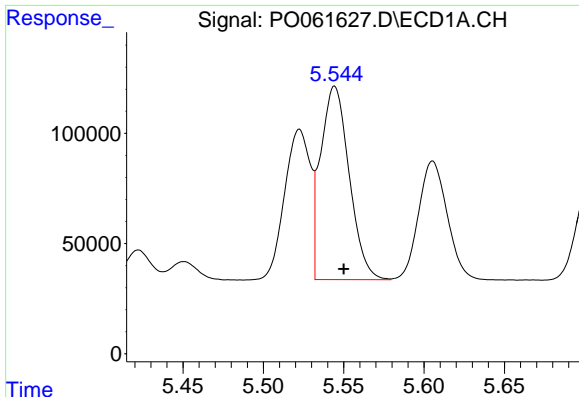
#1 Tetrachloro-m-xylene
 R.T.: 3.518 min
 Delta R.T.: -0.021 min
 Response: 1405481
 Conc: 43.46 ng/ml



#2 Decachlorobiphenyl
 R.T.: 10.018 min
 Delta R.T.: -0.018 min
 Response: 2218654
 Conc: 47.64 ng/ml



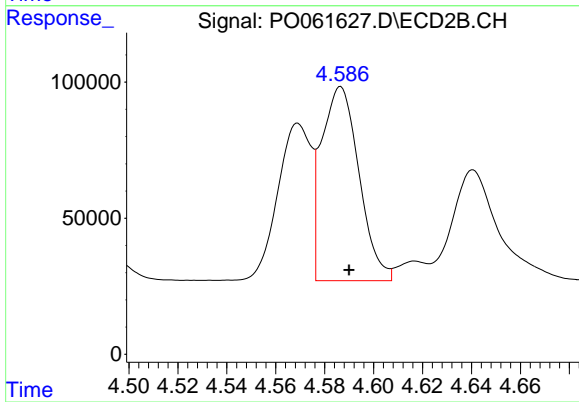
#2 Decachlorobiphenyl
 R.T.: 8.384 min
 Delta R.T.: -0.025 min
 Response: 1465390
 Conc: 45.26 ng/ml



#3 AR-1016-1

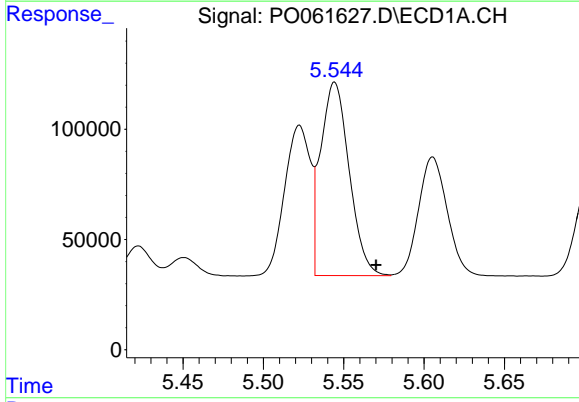
R.T.: 5.544 min
 Delta R.T.: -0.006 min
 Response: 1084672
 Conc: 591.51 ng/ml

Instrument :
 ECD_O
 ClientSampled :



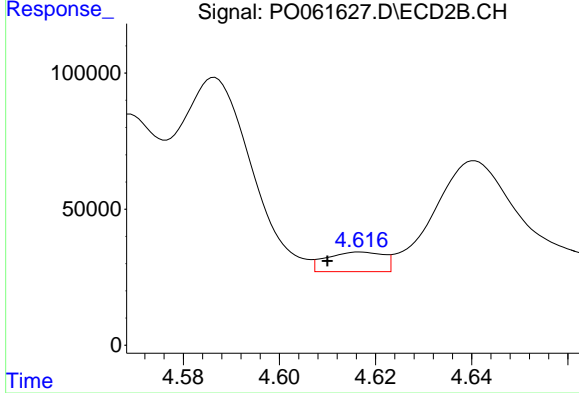
#3 AR-1016-1

R.T.: 4.587 min
 Delta R.T.: -0.003 min
 Response: 758117
 Conc: 563.80 ng/ml



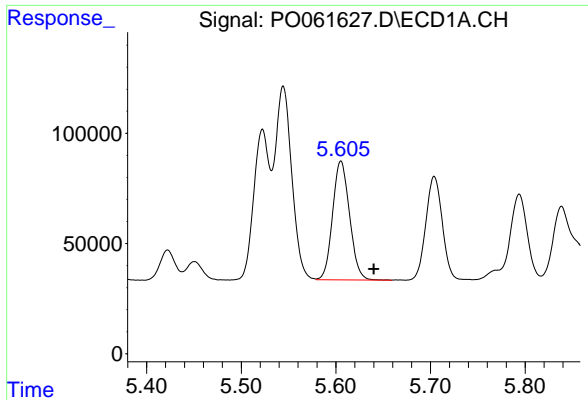
#4 AR-1016-2

R.T.: 5.544 min
 Delta R.T.: -0.026 min
 Response: 1084672
 Conc: 419.63 ng/ml



#4 AR-1016-2

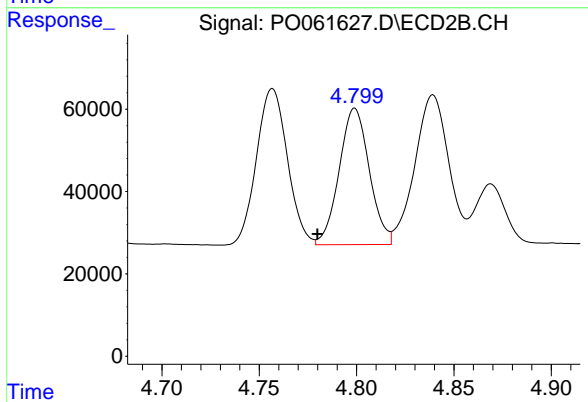
R.T.: 4.617 min
 Delta R.T.: 0.007 min
 Response: 59275
 Conc: 31.98 ng/ml



#5 AR-1016-3

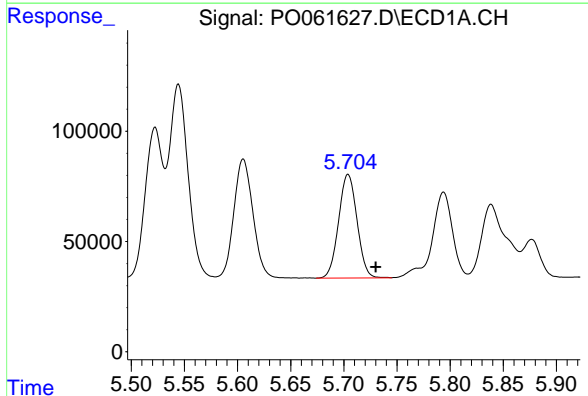
R.T.: 5.605 min
 Delta R.T.: -0.035 min
 Response: 671525
 Conc: 418.02 ng/ml

Instrument :
 ECD_O
 ClientSampled :



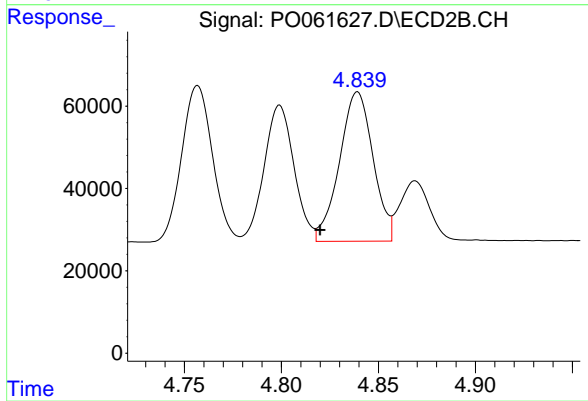
#5 AR-1016-3

R.T.: 4.799 min
 Delta R.T.: 0.019 min
 Response: 356998
 Conc: 356.38 ng/ml



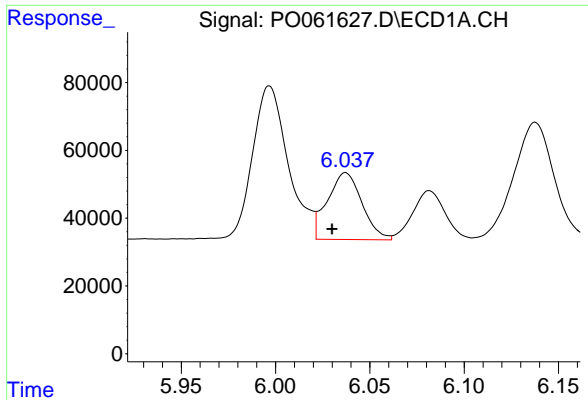
#6 AR-1016-4

R.T.: 5.704 min
 Delta R.T.: -0.026 min
 Response: 566963
 Conc: 424.07 ng/ml



#6 AR-1016-4

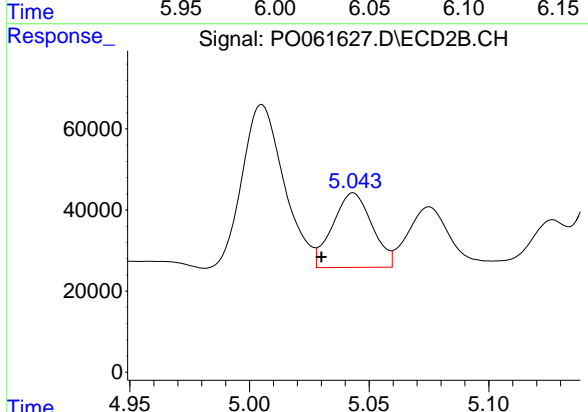
R.T.: 4.839 min
 Delta R.T.: 0.019 min
 Response: 437588
 Conc: 504.97 ng/ml



#7 AR-1016-5

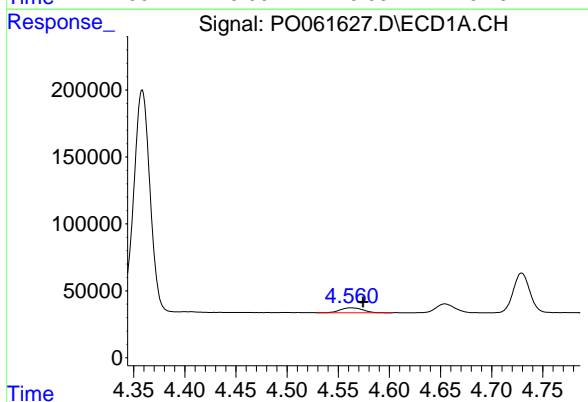
R.T.: 6.037 min
 Delta R.T.: 0.007 min
 Response: 251686
 Conc: 183.52 ng/ml

Instrument :
 ECD_O
 ClientSampleId :



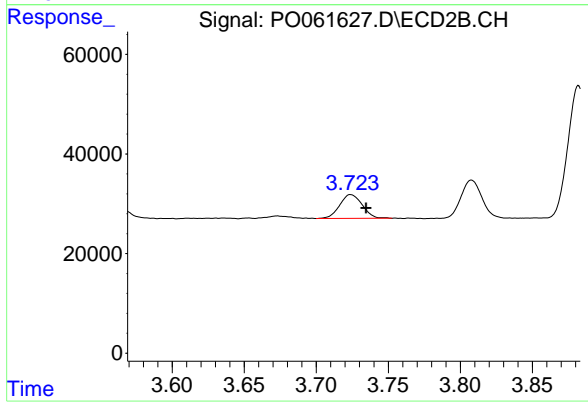
#7 AR-1016-5

R.T.: 5.043 min
 Delta R.T.: 0.013 min
 Response: 211395
 Conc: 185.20 ng/ml



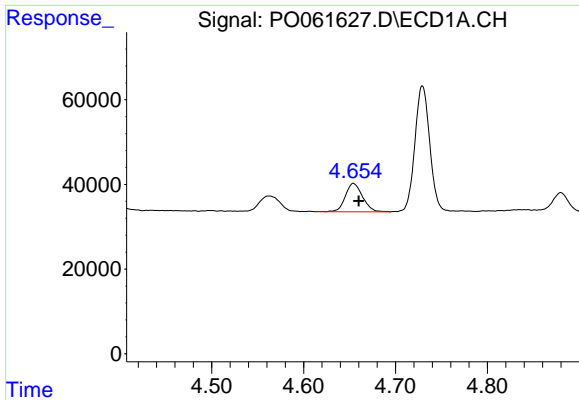
#8 AR-1221-1

R.T.: 4.562 min
 Delta R.T.: -0.012 min
 Response: 57352
 Conc: 124.06 ng/ml



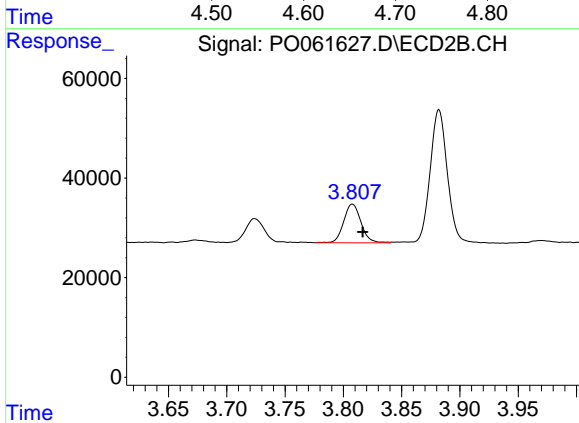
#8 AR-1221-1

R.T.: 3.724 min
 Delta R.T.: -0.011 min
 Response: 52350
 Conc: 132.20 ng/ml

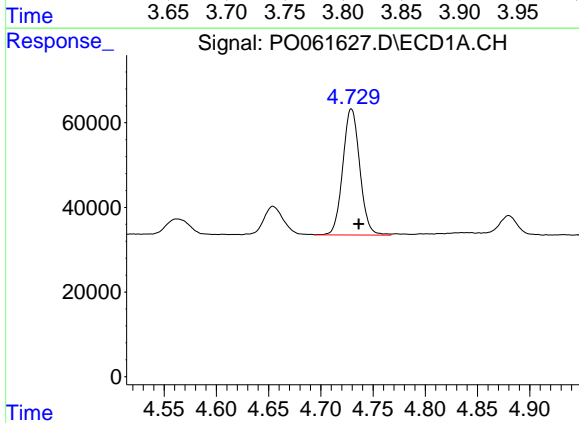


#9 AR-1221-2
 R.T.: 4.654 min
 Delta R.T.: -0.006 min
 Response: 87718
 Conc: 244.33 ng/ml

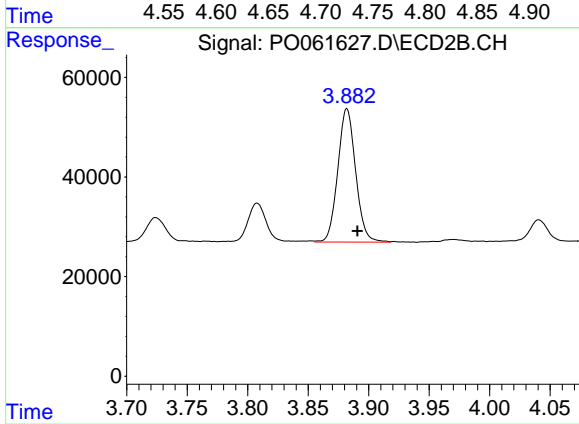
Instrument :
 ECD_O
 ClientSampleId :



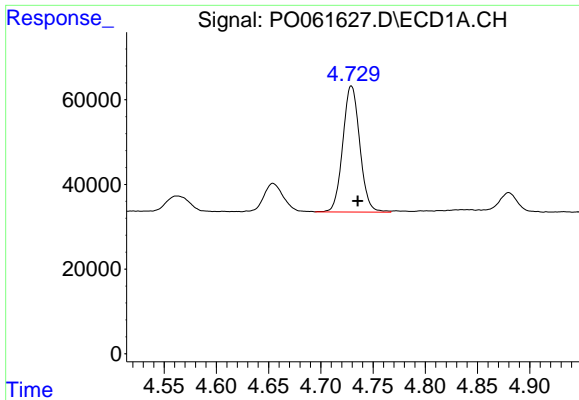
#9 AR-1221-2
 R.T.: 3.808 min
 Delta R.T.: -0.009 min
 Response: 80692
 Conc: 261.65 ng/ml



#10 AR-1221-3
 R.T.: 4.729 min
 Delta R.T.: -0.007 min
 Response: 337551
 Conc: 296.48 ng/ml



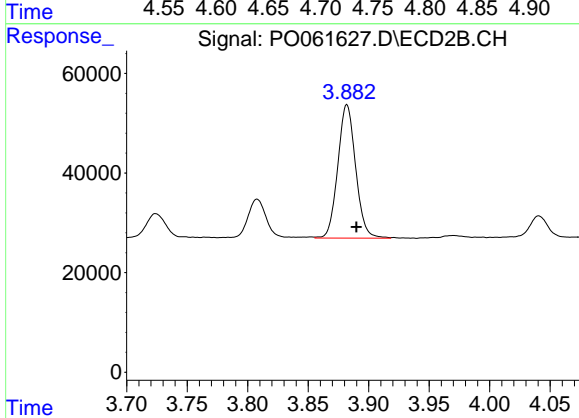
#10 AR-1221-3
 R.T.: 3.882 min
 Delta R.T.: -0.009 min
 Response: 275287
 Conc: 301.80 ng/ml



#11 AR-1232-1

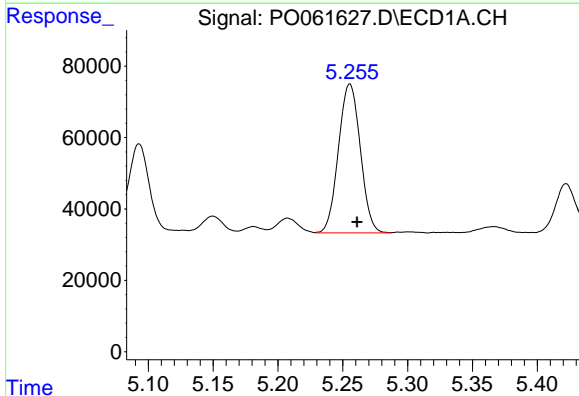
R.T.: 4.729 min
 Delta R.T.: -0.006 min
 Response: 337551
 Conc: 241.38 ng/ml

Instrument :
 ECD_O
 ClientSampleId :



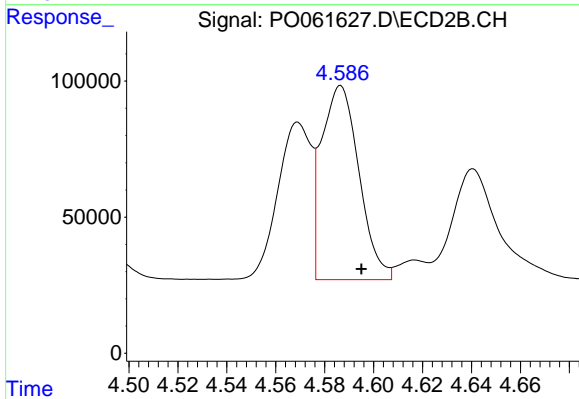
#11 AR-1232-1

R.T.: 3.882 min
 Delta R.T.: -0.008 min
 Response: 275287
 Conc: 245.18 ng/ml



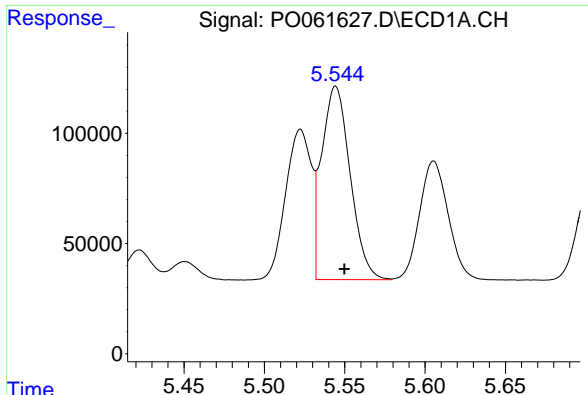
#12 AR-1232-2

R.T.: 5.255 min
 Delta R.T.: -0.006 min
 Response: 490395
 Conc: 625.06 ng/ml



#12 AR-1232-2

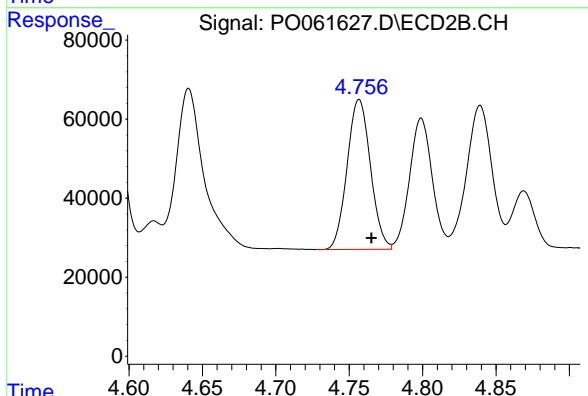
R.T.: 4.587 min
 Delta R.T.: -0.008 min
 Response: 758117
 Conc: 621.06 ng/ml



#13 AR-1232-3

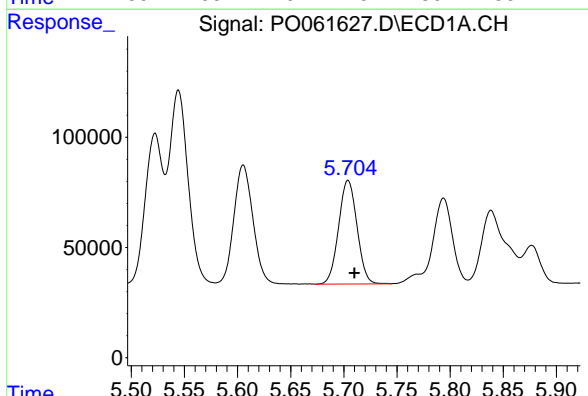
R.T.: 5.544 min
 Delta R.T.: -0.005 min
 Response: 1084672
 Conc: 634.80 ng/ml

Instrument :
 ECD_O
 ClientSampled :



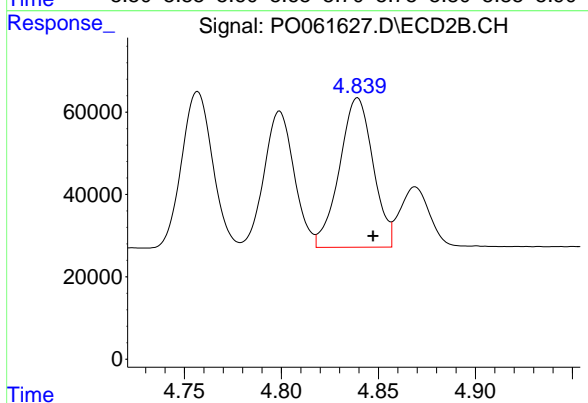
#13 AR-1232-3

R.T.: 4.757 min
 Delta R.T.: -0.008 min
 Response: 420059
 Conc: 636.21 ng/ml



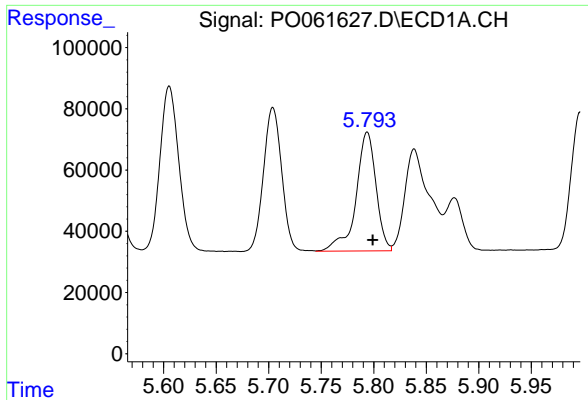
#14 AR-1232-4

R.T.: 5.704 min
 Delta R.T.: -0.006 min
 Response: 566963
 Conc: 640.79 ng/ml



#14 AR-1232-4

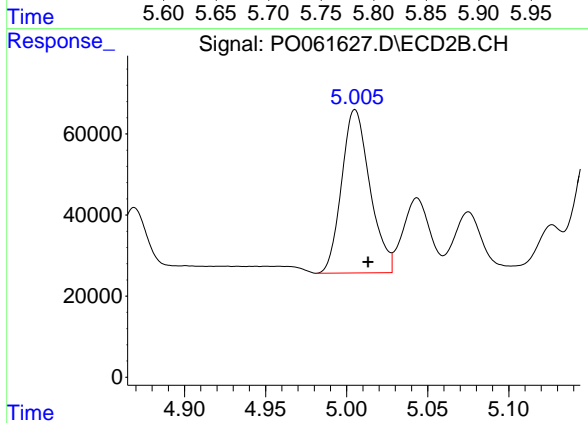
R.T.: 4.839 min
 Delta R.T.: -0.008 min
 Response: 437588
 Conc: 694.20 ng/ml



#15 AR-1232-5

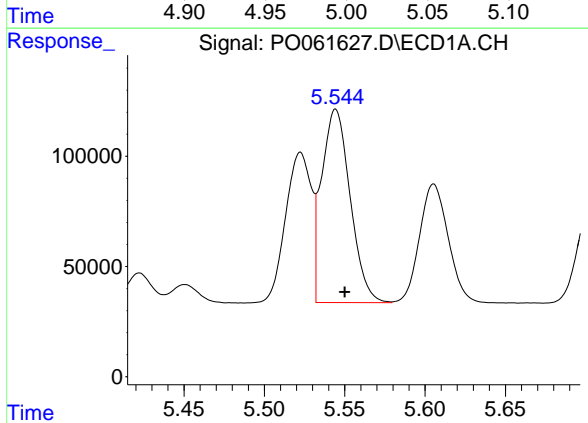
R.T.: 5.794 min
Delta R.T.: -0.005 min
Response: 514558
Conc: 742.15 ng/ml

Instrument :
ECD_O
ClientSampleId :



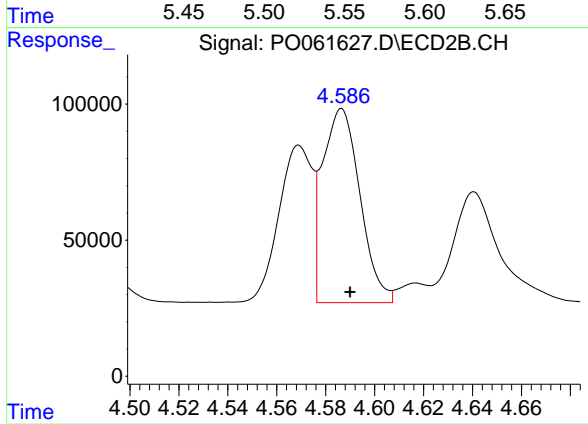
#15 AR-1232-5

R.T.: 5.005 min
Delta R.T.: -0.008 min
Response: 489681
Conc: 713.66 ng/ml



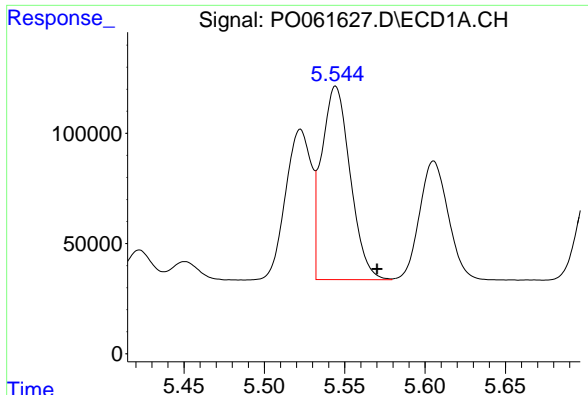
#16 AR-1242-1

R.T.: 5.544 min
Delta R.T.: -0.006 min
Response: 1084672
Conc: 763.77 ng/ml



#16 AR-1242-1

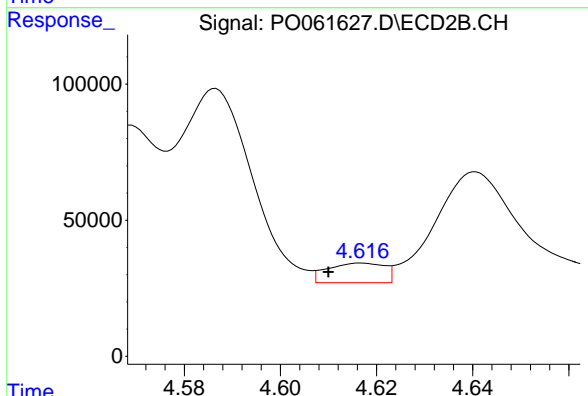
R.T.: 4.587 min
Delta R.T.: -0.003 min
Response: 758117
Conc: 739.98 ng/ml



#17 AR-1242-2

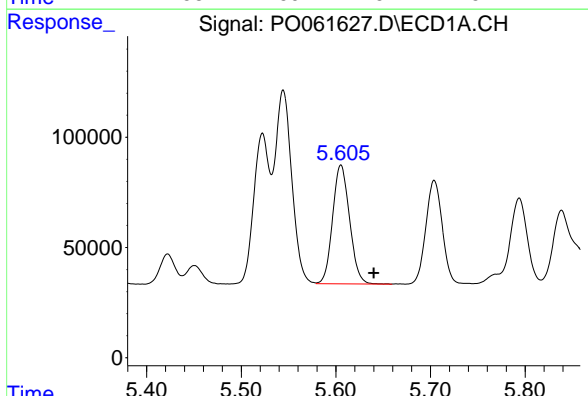
R.T.: 5.544 min
 Delta R.T.: -0.026 min
 Response: 1084672
 Conc: 539.68 ng/ml

Instrument :
 ECD_O
 ClientSampleId :



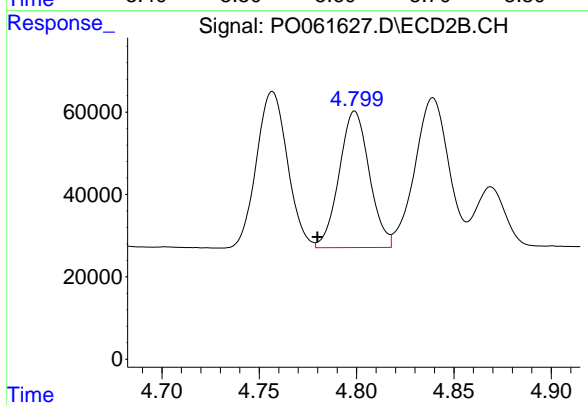
#17 AR-1242-2

R.T.: 4.617 min
 Delta R.T.: 0.007 min
 Response: 59275
 Conc: 42.03 ng/ml



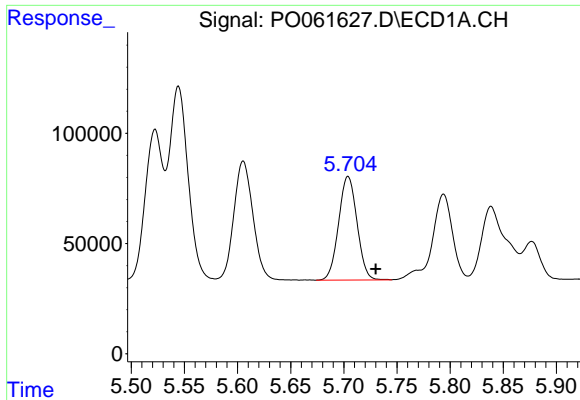
#18 AR-1242-3

R.T.: 5.605 min
 Delta R.T.: -0.035 min
 Response: 671525
 Conc: 532.17 ng/ml



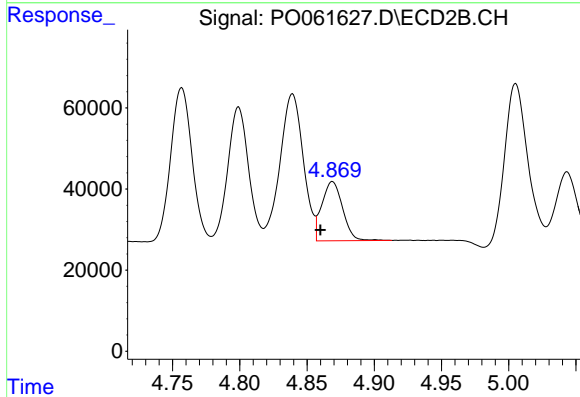
#18 AR-1242-3

R.T.: 4.799 min
 Delta R.T.: 0.019 min
 Response: 356998
 Conc: 457.17 ng/ml

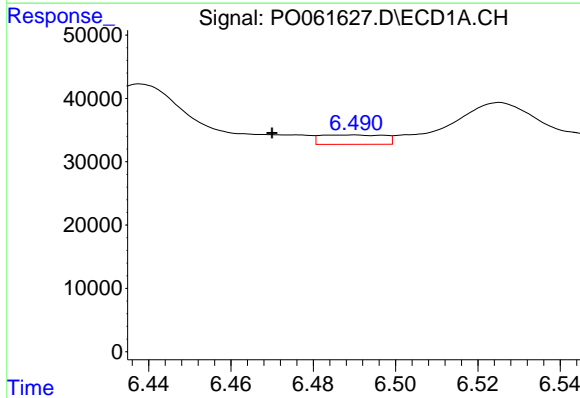


#19 AR-1242-4
 R.T.: 5.704 min
 Delta R.T.: -0.026 min
 Response: 566963
 Conc: 539.57 ng/ml

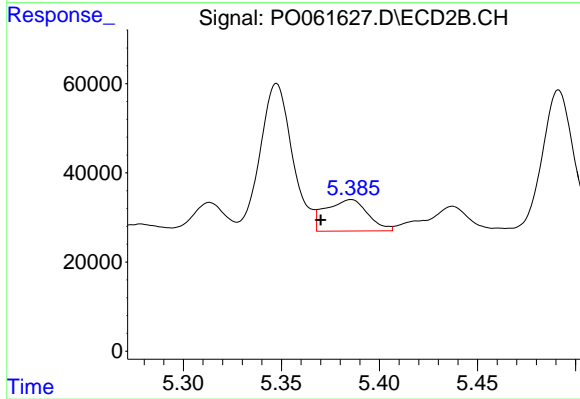
Instrument :
 ECD_O
 ClientSampled :



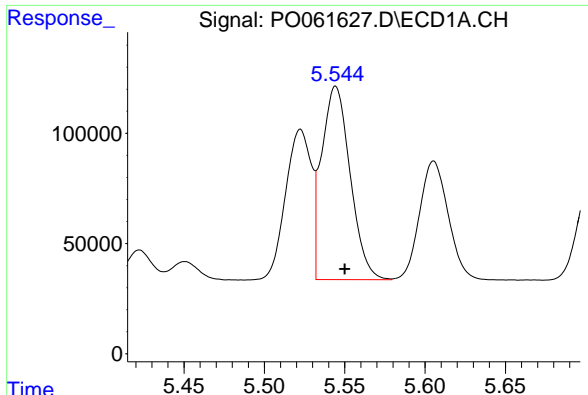
#19 AR-1242-4
 R.T.: 4.869 min
 Delta R.T.: 0.009 min
 Response: 156370
 Conc: 190.56 ng/ml



#20 AR-1242-5
 R.T.: 6.490 min
 Delta R.T.: 0.020 min
 Response: 15961
 Conc: 11.93 ng/ml



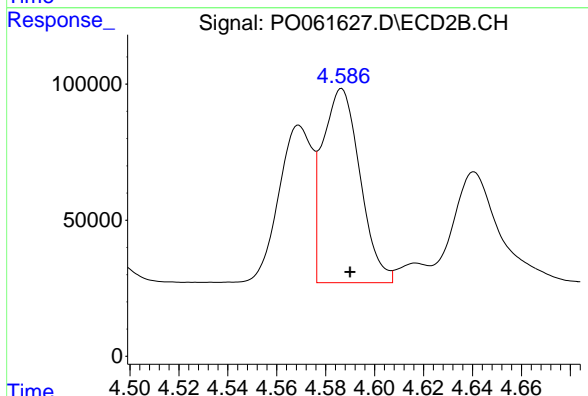
#20 AR-1242-5
 R.T.: 5.386 min
 Delta R.T.: 0.016 min
 Response: 105288
 Conc: 98.29 ng/ml



#21 AR-1248-1

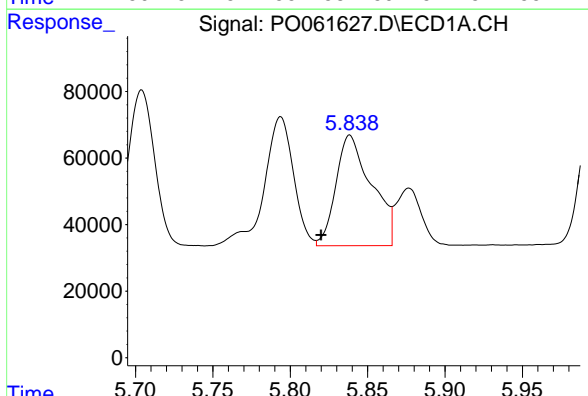
R.T.: 5.544 min
 Delta R.T.: -0.006 min
 Response: 1084672
 Conc: 923.27 ng/ml

Instrument :
 ECD_O
 ClientSampled :



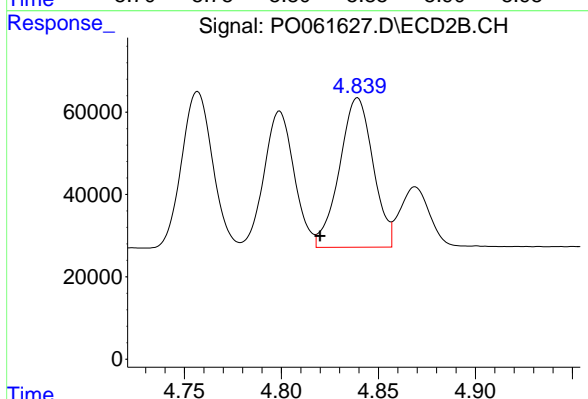
#21 AR-1248-1

R.T.: 4.587 min
 Delta R.T.: -0.003 min
 Response: 758117
 Conc: 847.23 ng/ml



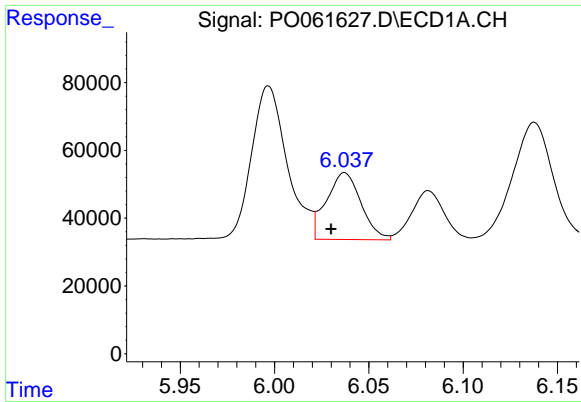
#22 AR-1248-2

R.T.: 5.839 min
 Delta R.T.: 0.019 min
 Response: 531771
 Conc: 315.19 ng/ml



#22 AR-1248-2

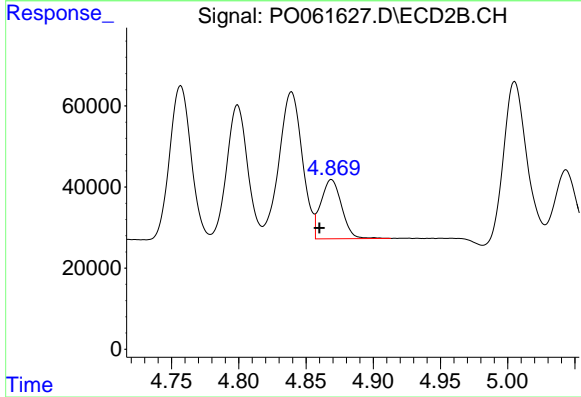
R.T.: 4.839 min
 Delta R.T.: 0.019 min
 Response: 437588
 Conc: 371.38 ng/ml



#23 AR-1248-3

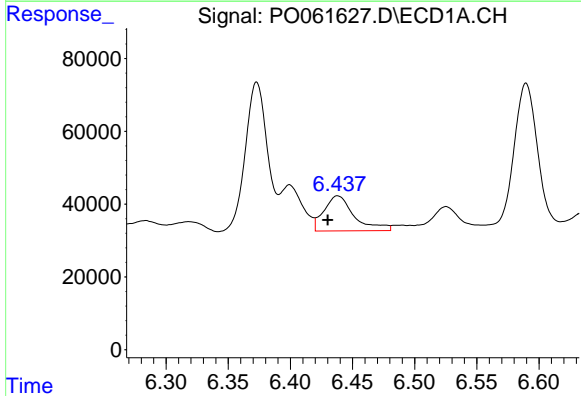
R.T.: 6.037 min
 Delta R.T.: 0.007 min
 Response: 251686
 Conc: 134.67 ng/ml

Instrument :
 ECD_O
 ClientSampleId :



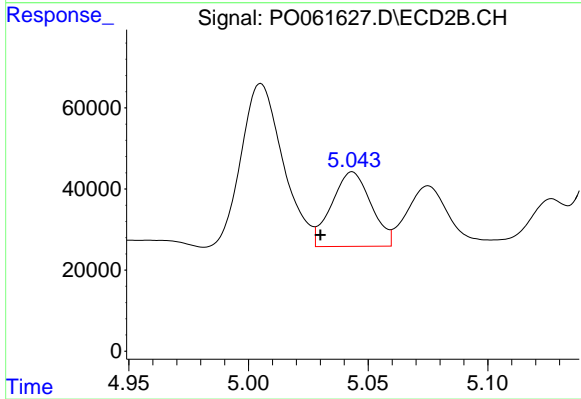
#23 AR-1248-3

R.T.: 4.869 min
 Delta R.T.: 0.009 min
 Response: 156370
 Conc: 125.98 ng/ml



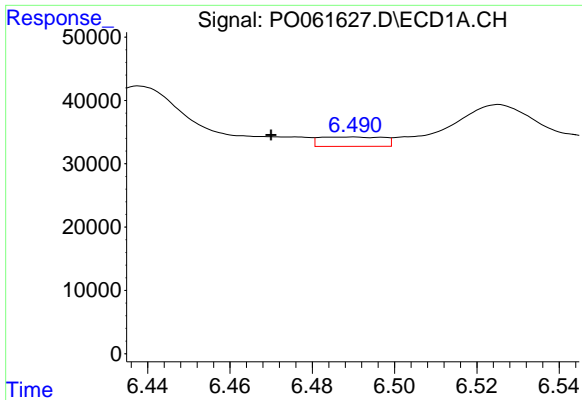
#24 AR-1248-4

R.T.: 6.438 min
 Delta R.T.: 0.008 min
 Response: 164046
 Conc: 69.43 ng/ml



#24 AR-1248-4

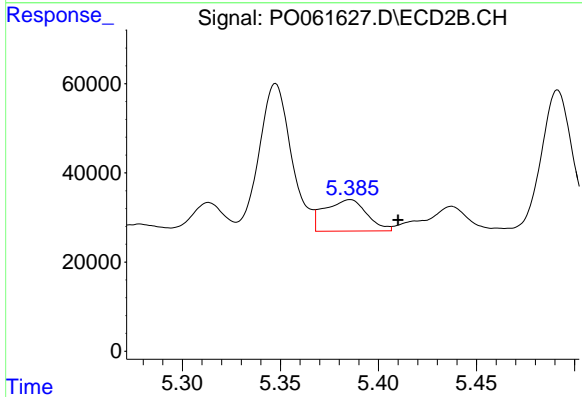
R.T.: 5.043 min
 Delta R.T.: 0.013 min
 Response: 211395
 Conc: 140.62 ng/ml



#25 AR-1248-5

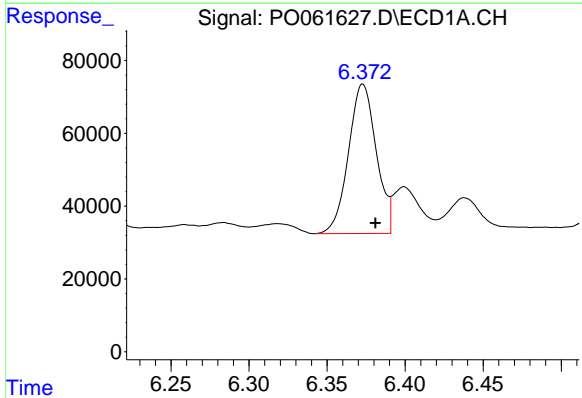
R.T.: 6.490 min
 Delta R.T.: 0.020 min
 Response: 15961
 Conc: 7.04 ng/ml

Instrument :
 ECD_O
 ClientSampled :



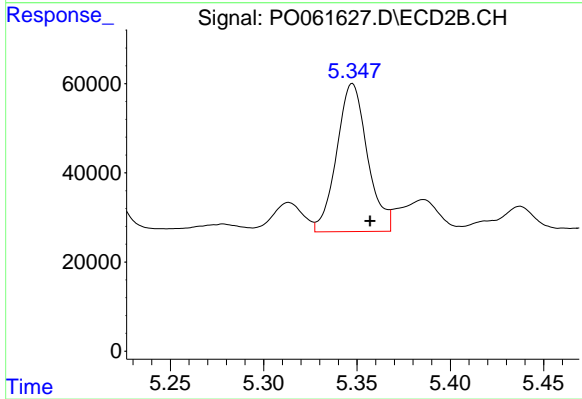
#25 AR-1248-5

R.T.: 5.386 min
 Delta R.T.: -0.024 min
 Response: 105288
 Conc: 68.63 ng/ml



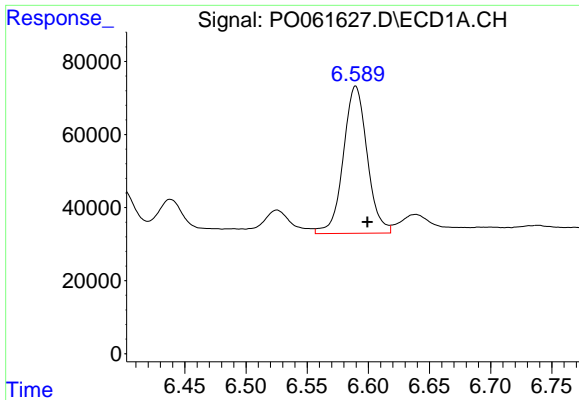
#26 AR-1254-1

R.T.: 6.373 min
 Delta R.T.: -0.008 min
 Response: 509730
 Conc: 223.43 ng/ml



#26 AR-1254-1

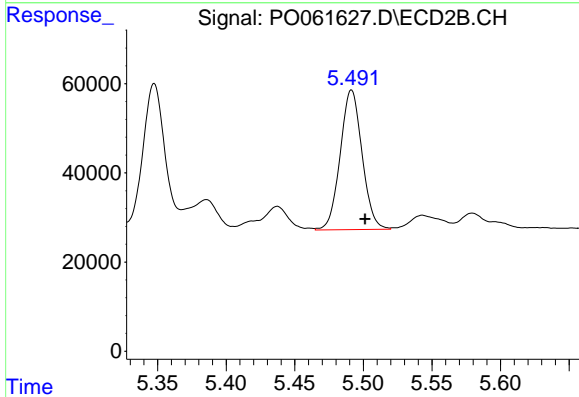
R.T.: 5.348 min
 Delta R.T.: -0.009 min
 Response: 380579
 Conc: 173.52 ng/ml



#27 AR-1254-2

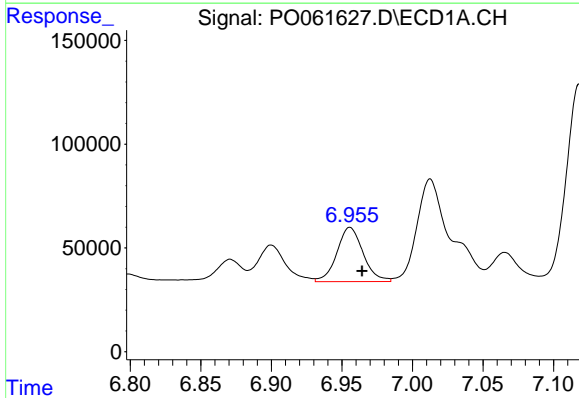
R.T.: 6.590 min
 Delta R.T.: -0.010 min
 Response: 546634
 Conc: 151.29 ng/ml

Instrument :
 ECD_O
 ClientSampled :



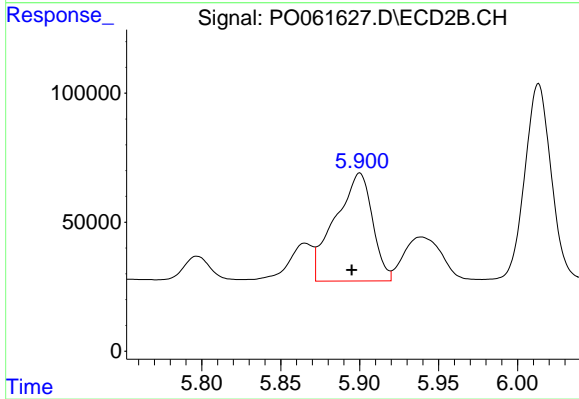
#27 AR-1254-2

R.T.: 5.491 min
 Delta R.T.: -0.010 min
 Response: 347173
 Conc: 177.08 ng/ml



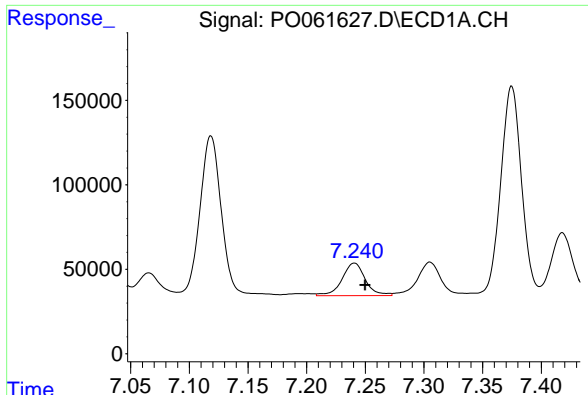
#28 AR-1254-3

R.T.: 6.956 min
 Delta R.T.: -0.009 min
 Response: 338766
 Conc: 86.70 ng/ml



#28 AR-1254-3

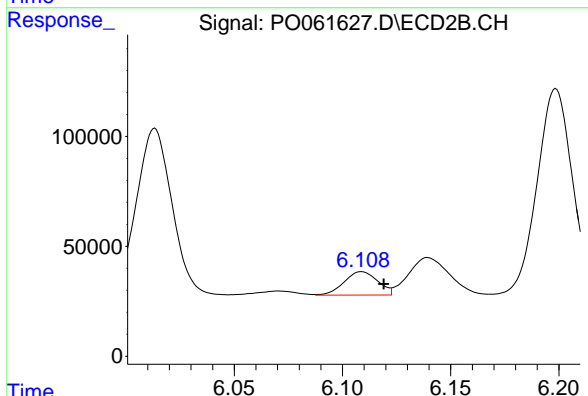
R.T.: 5.900 min
 Delta R.T.: 0.005 min
 Response: 687052
 Conc: 215.80 ng/ml



#29 AR-1254-4

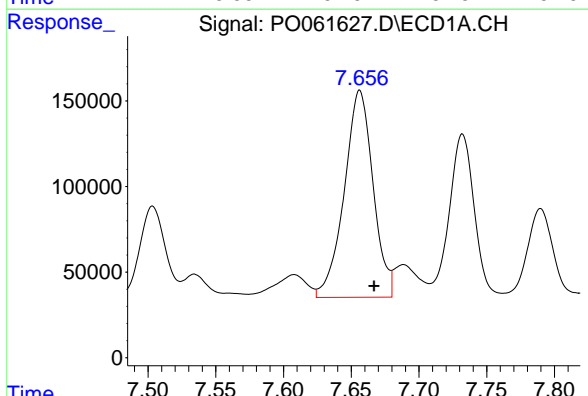
R.T.: 7.241 min
 Delta R.T.: -0.009 min
 Response: 266267
 Conc: 87.92 ng/ml

Instrument :
 ECD_O
 ClientSampled :



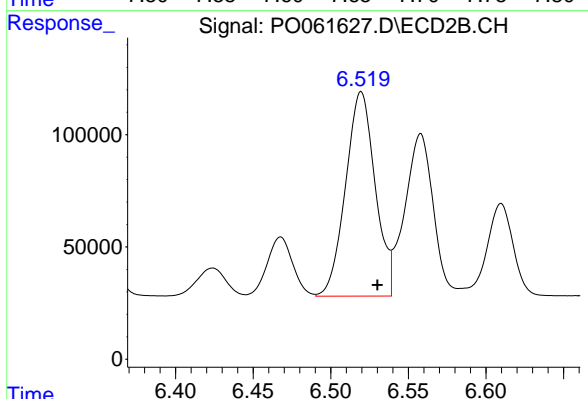
#29 AR-1254-4

R.T.: 6.109 min
 Delta R.T.: -0.010 min
 Response: 114831
 Conc: 56.60 ng/ml



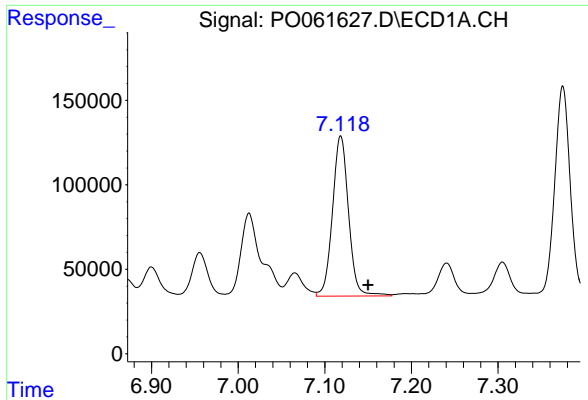
#30 AR-1254-5

R.T.: 7.656 min
 Delta R.T.: -0.011 min
 Response: 1789745
 Conc: 569.91 ng/ml



#30 AR-1254-5

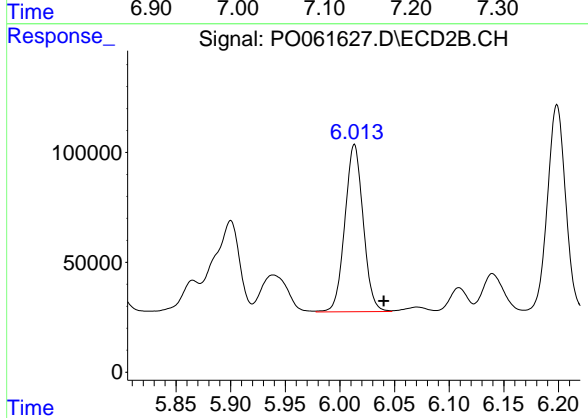
R.T.: 6.520 min
 Delta R.T.: -0.010 min
 Response: 1208441
 Conc: 427.24 ng/ml



#31 AR-1260-1

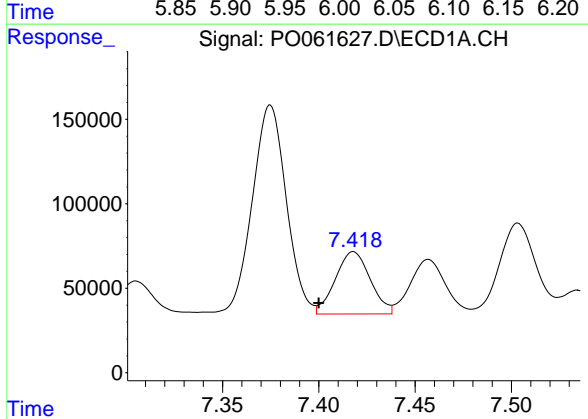
R.T.: 7.118 min
 Delta R.T.: -0.032 min
 Response: 1221398
 Conc: 467.87 ng/ml

Instrument :
 ECD_O
 ClientSampleId :



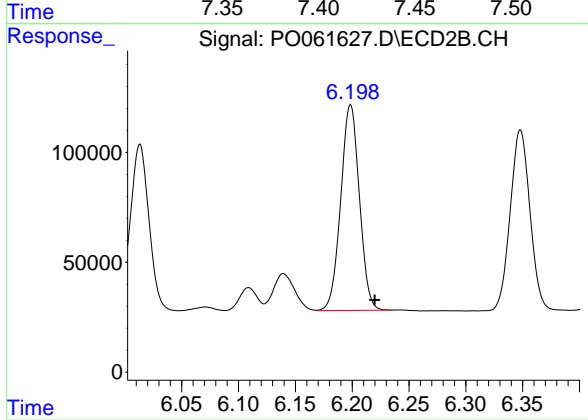
#31 AR-1260-1

R.T.: 6.013 min
 Delta R.T.: -0.027 min
 Response: 886928
 Conc: 434.81 ng/ml



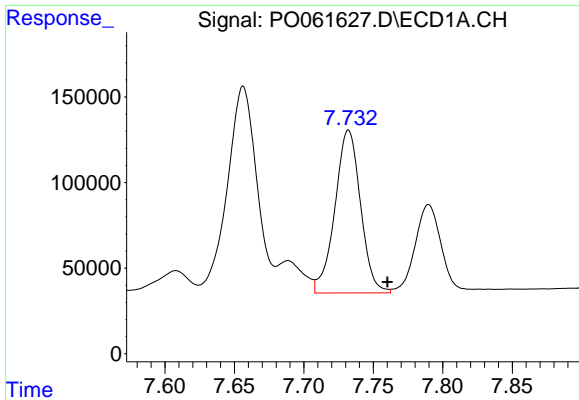
#32 AR-1260-2

R.T.: 7.418 min
 Delta R.T.: 0.018 min
 Response: 464779
 Conc: 145.79 ng/ml



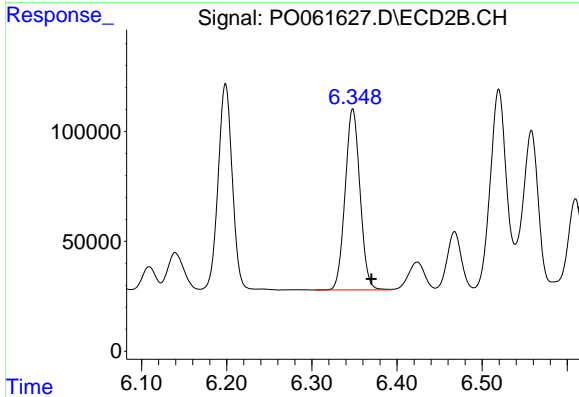
#32 AR-1260-2

R.T.: 6.199 min
 Delta R.T.: -0.021 min
 Response: 1070222
 Conc: 445.60 ng/ml

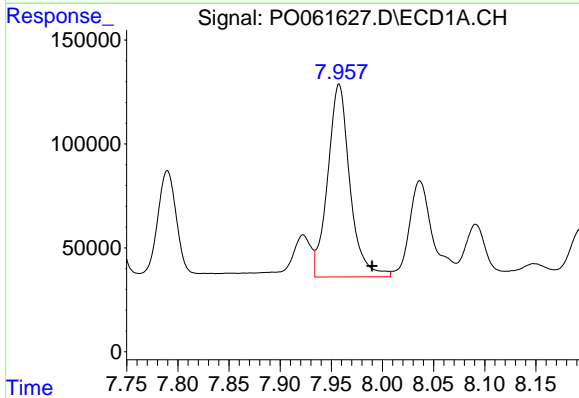


#33 AR-1260-3
 R.T.: 7.732 min
 Delta R.T.: -0.028 min
 Response: 1223368
 Conc: 509.34 ng/ml

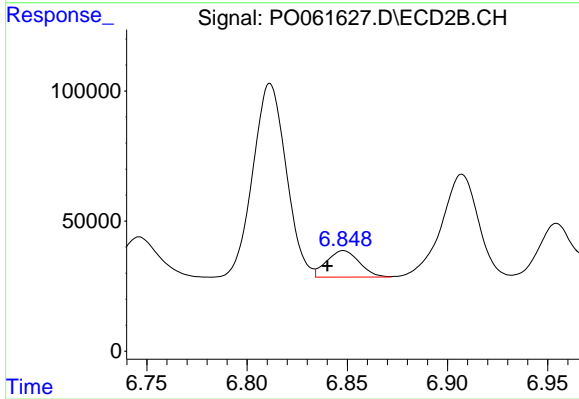
Instrument :
 ECD_O
 ClientSampled :



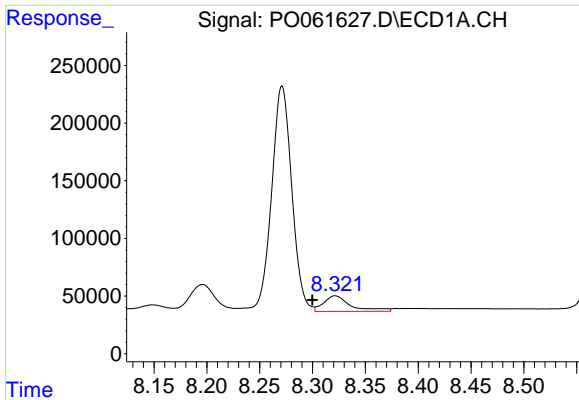
#33 AR-1260-3
 R.T.: 6.348 min
 Delta R.T.: -0.022 min
 Response: 1002692
 Conc: 445.03 ng/ml



#34 AR-1260-4
 R.T.: 7.958 min
 Delta R.T.: -0.032 min
 Response: 1394258
 Conc: 521.79 ng/ml



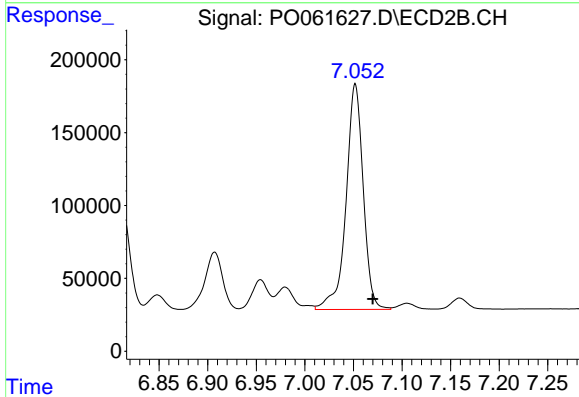
#34 AR-1260-4
 R.T.: 6.848 min
 Delta R.T.: 0.008 min
 Response: 116198
 Conc: 62.94 ng/ml



#35 AR-1260-5

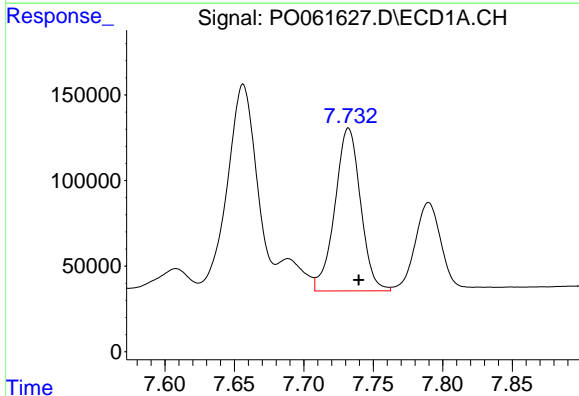
R.T.: 8.321 min
 Delta R.T.: 0.021 min
 Response: 239258
 Conc: 48.35 ng/ml

Instrument :
 ECD_O
 ClientSampled :



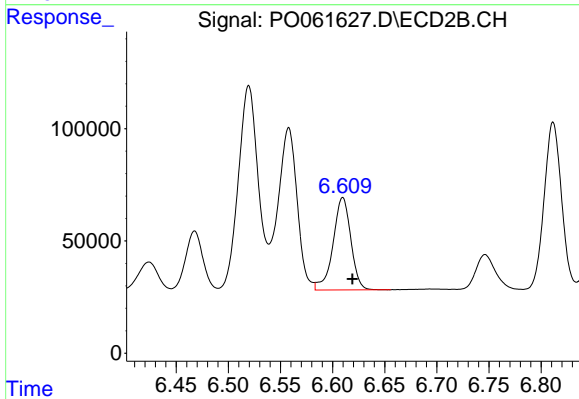
#35 AR-1260-5

R.T.: 7.052 min
 Delta R.T.: -0.018 min
 Response: 1903256
 Conc: 488.81 ng/ml



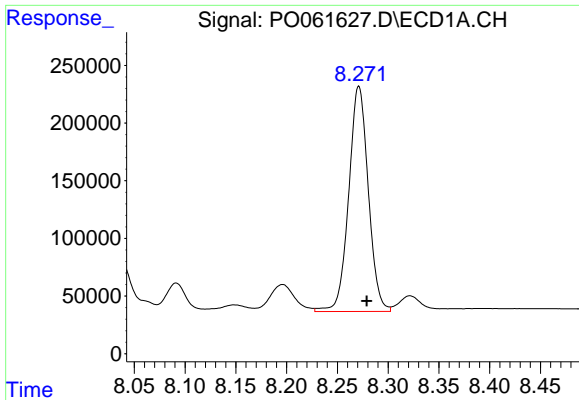
#36 AR-1262-1

R.T.: 7.732 min
 Delta R.T.: -0.007 min
 Response: 1223368
 Conc: 319.29 ng/ml



#36 AR-1262-1

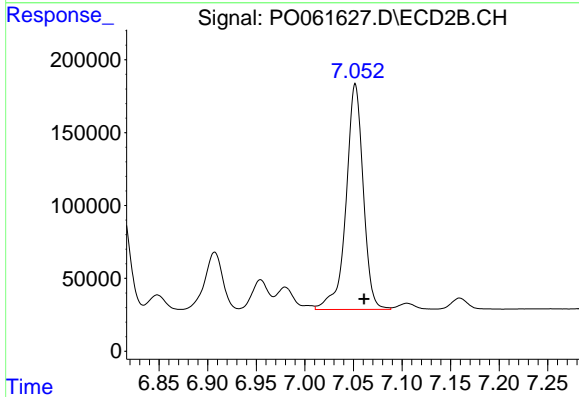
R.T.: 6.610 min
 Delta R.T.: -0.009 min
 Response: 489197
 Conc: 400.77 ng/ml



#37 AR-1262-2

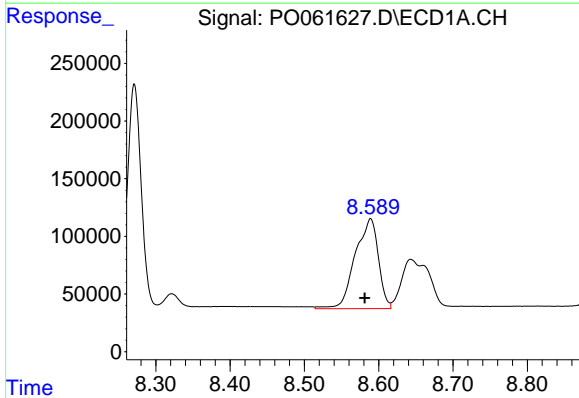
R.T.: 8.271 min
 Delta R.T.: -0.008 min
 Response: 2617890
 Conc: 421.69 ng/ml

Instrument :
 ECD_O
 ClientSampleId :



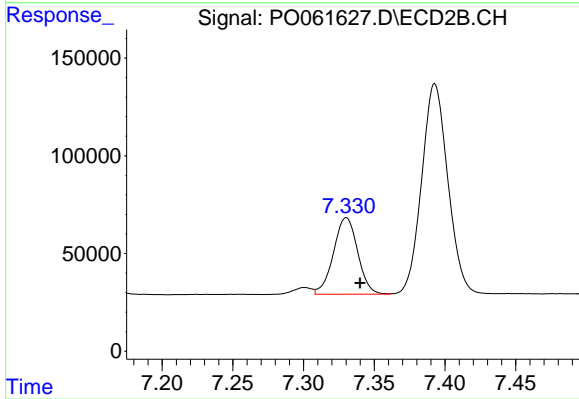
#37 AR-1262-2

R.T.: 7.052 min
 Delta R.T.: -0.009 min
 Response: 1903256
 Conc: 413.93 ng/ml



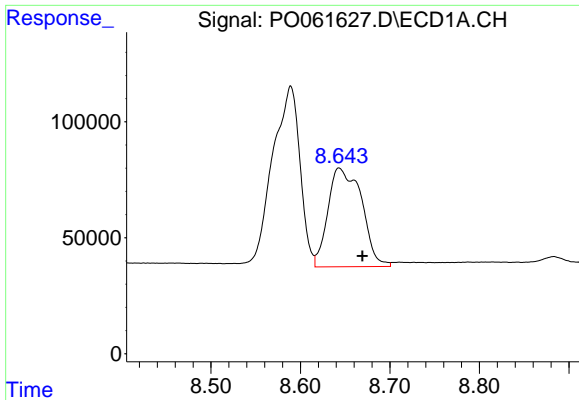
#38 AR-1262-3

R.T.: 8.589 min
 Delta R.T.: 0.008 min
 Response: 1692030
 Conc: 407.10 ng/ml



#38 AR-1262-3

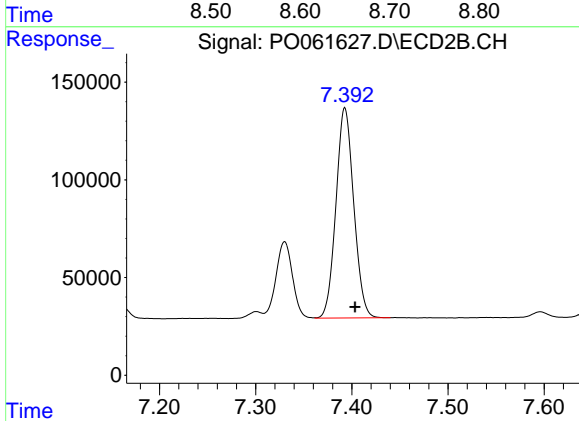
R.T.: 7.330 min
 Delta R.T.: -0.010 min
 Response: 466722
 Conc: 247.75 ng/ml



#39 AR-1262-4

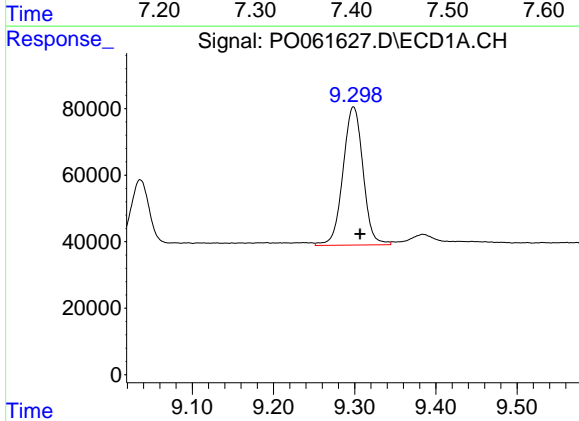
R.T.: 8.643 min
 Delta R.T.: -0.026 min
 Response: 1111427
 Conc: 352.07 ng/ml

Instrument :
 ECD_O
 ClientSampleId :



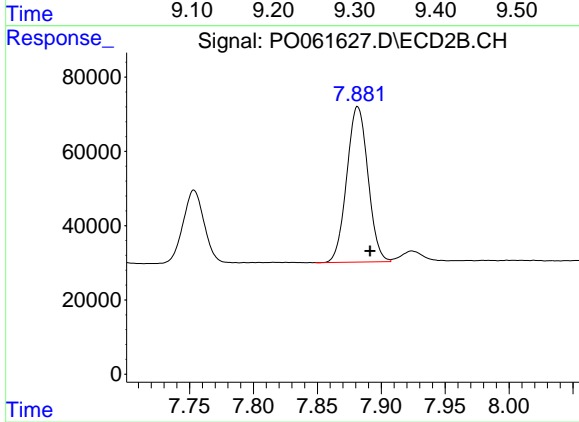
#39 AR-1262-4

R.T.: 7.393 min
 Delta R.T.: -0.011 min
 Response: 1384531
 Conc: 411.97 ng/ml



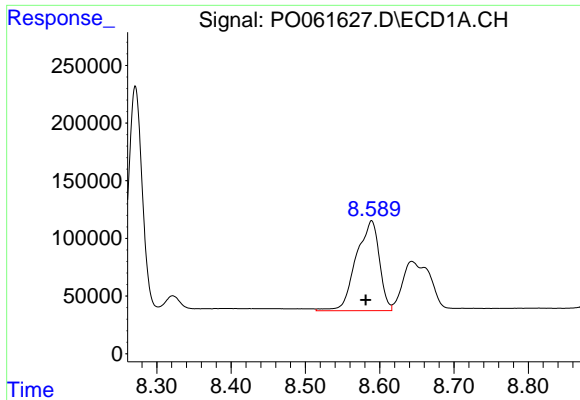
#40 AR-1262-5

R.T.: 9.299 min
 Delta R.T.: -0.008 min
 Response: 712504
 Conc: 350.36 ng/ml



#40 AR-1262-5

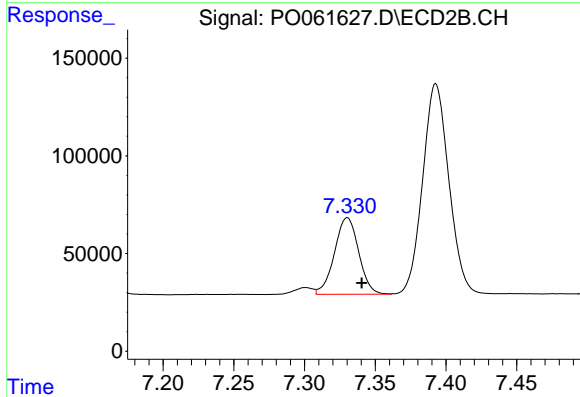
R.T.: 7.882 min
 Delta R.T.: -0.010 min
 Response: 483654
 Conc: 319.04 ng/ml



#41 AR-1268-1

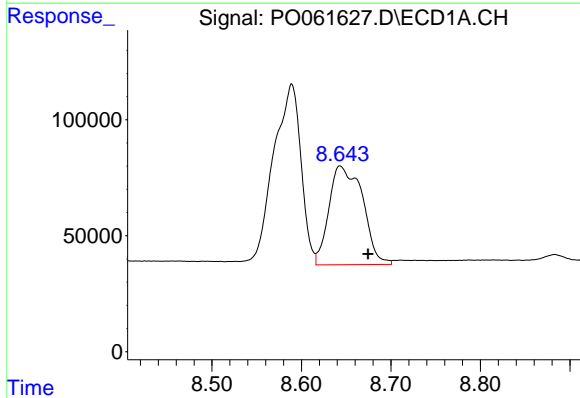
R.T.: 8.589 min
 Delta R.T.: 0.008 min
 Response: 1692030
 Conc: 251.62 ng/ml

Instrument :
 ECD_O
 ClientSampled :



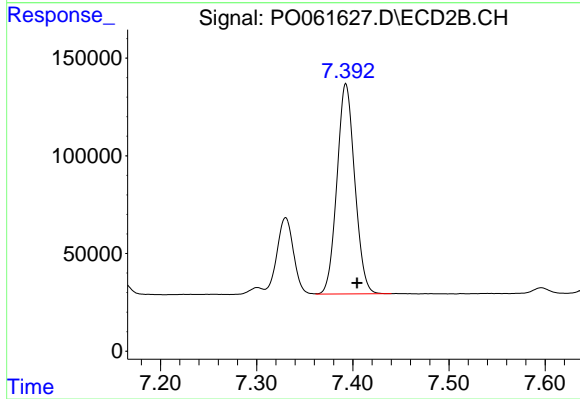
#41 AR-1268-1

R.T.: 7.330 min
 Delta R.T.: -0.010 min
 Response: 466722
 Conc: 96.65 ng/ml



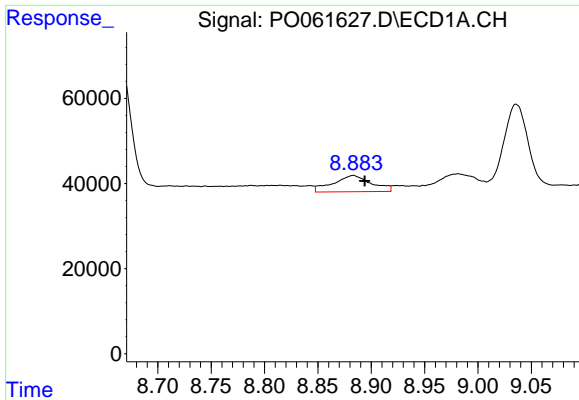
#42 AR-1268-2

R.T.: 8.643 min
 Delta R.T.: -0.031 min
 Response: 1111427
 Conc: 179.48 ng/ml



#42 AR-1268-2

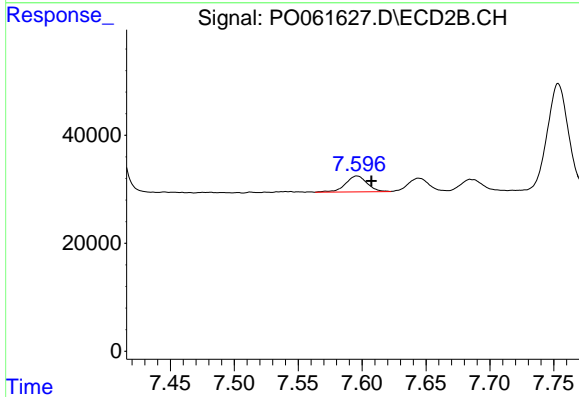
R.T.: 7.393 min
 Delta R.T.: -0.012 min
 Response: 1384531
 Conc: 321.25 ng/ml



#43 AR-1268-3

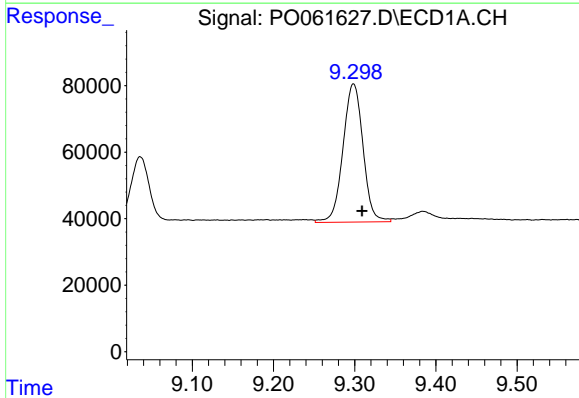
R.T.: 8.883 min
 Delta R.T.: -0.011 min
 Response: 95536
 Conc: 18.69 ng/ml

Instrument :
 ECD_O
 ClientSampleId :



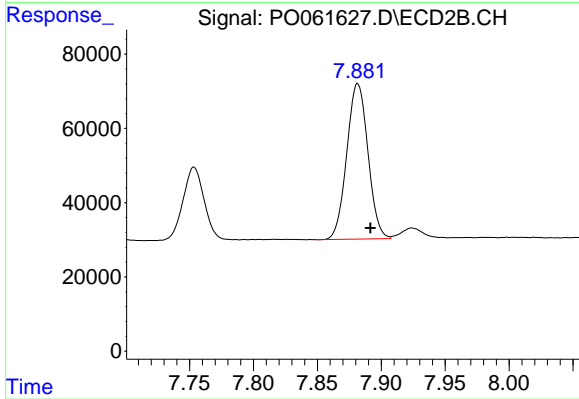
#43 AR-1268-3

R.T.: 7.596 min
 Delta R.T.: -0.011 min
 Response: 35133
 Conc: 9.80 ng/ml



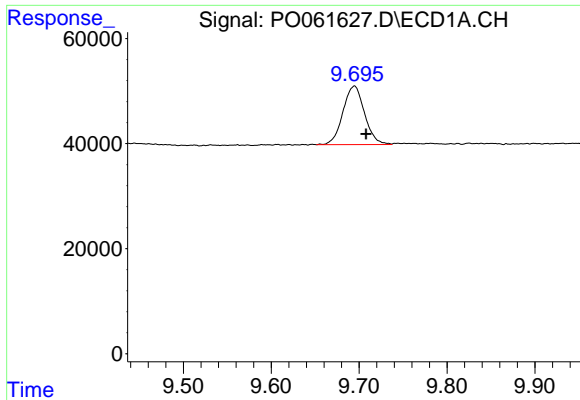
#44 AR-1268-4

R.T.: 9.299 min
 Delta R.T.: -0.011 min
 Response: 712504
 Conc: 325.85 ng/ml



#44 AR-1268-4

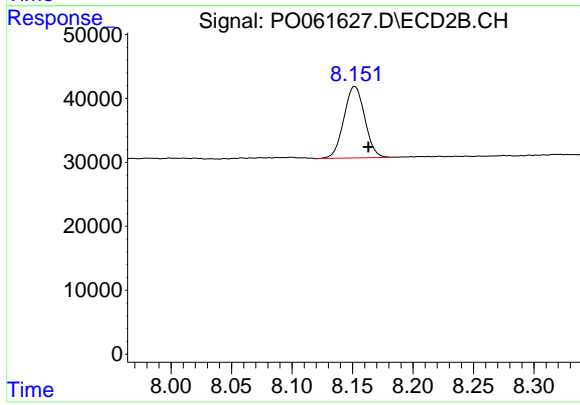
R.T.: 7.882 min
 Delta R.T.: -0.010 min
 Response: 483654
 Conc: 300.52 ng/ml



#45 AR-1268-5

R.T.: 9.695 min
Delta R.T.: -0.013 min
Response: 190234
Conc: 12.66 ng/ml

Instrument :
ECD_O
ClientSampleId :



#45 AR-1268-5

R.T.: 8.152 min
Delta R.T.: -0.011 min
Response: 134297
Conc: 13.35 ng/ml