

Data Path : Z:\pestpcbsrv\HPCHEM1\ECD_O\Data\P0100319\
 Data File : P0061631.D
 Signal(s) : Signal #1: ECD1A.CH Signal #2: ECD2B.CH
 Acq On : 03 Oct 2019 11:19
 Operator : HP/AJ
 Sample : K5131-04RE
 Misc :
 ALS Vial : 7 Sample Multiplier: 1

Instrument :
 ECD_O
ClientSampled :
 20190828-COMPOSITE-DRE

Manual Integrations
APPROVED
 Ankita
 10/4/2019 5:10:32 PM

Integration File signal 1: autoint1.e
 Integration File signal 2: autoint2.e
 Quant Time: Oct 04 02:07:37 2019
 Quant Method : Z:\pestpcbsrv\HPCHEM1\ECD_O\methods\P0100119.M
 Quant Title : GC EXTRACTABLES
 QLast Update : Tue Oct 01 15:34:04 2019
 Response via : Initial Calibration
 Integrator: ChemStation 6890 Scale Mode: Small noise peaks clipped

Volume Inj. : 2 µl
 Signal #1 Phase : ZB-MR1 Signal #2 Phase: ZB-MR2
 Signal #1 Info : 30Mx0.32mmx 0.50µ Signal #2 Info : 30M x 0.32mm x 0.25µm

Compound	RT#1	RT#2	Resp#1	Resp#2	ng/ml	ng/ml

System Monitoring Compounds						
1) SA Tetrachlo...	4.357	3.518	614615	496189	14.985	15.343
2) SA Decachlor...	10.014	8.384	406832	291351	8.736	8.999m
Target Compounds						
16) L4 AR-1242-1	5.520	4.569	104839	88789	73.822	86.665
17) L4 AR-1242-2	5.543	4.587	183876	145434	91.488	103.128
18) L4 AR-1242-3	5.607	4.758	40156	48876	31.822	62.591 #
19) L4 AR-1242-4	5.703	4.838	49037	96816	46.668	117.982 #
20) L4 AR-1242-5	6.436	5.348	185445	163362	138.651m	152.497m
26) L6 AR-1254-1	6.372	5.348	295431	176229	129.496	80.349m#
27) L6 AR-1254-2	6.590	5.492	371411	125459	102.796m	63.994m#
28) L6 AR-1254-3	6.956	5.885	246365	231245	63.052m	72.633
29) L6 AR-1254-4	7.239	6.109	166375	125866	54.934m	62.038
30) L6 AR-1254-5	7.656	6.519	214572	158247	68.326m	55.948

(f)=RT Delta > 1/2 Window (#)=Amounts differ by > 25% (m)=manual int.

Data Path : Z:\pestpcbsrv\HPCHEM1\ECD_O\Data\PO100319\
 Data File : PO061631.D
 Signal(s) : Signal #1: ECD1A.CH Signal #2: ECD2B.CH
 Acq On : 03 Oct 2019 11:19
 Operator : HP/AJ
 Sample : K5131-04RE
 Misc :
 ALS Vial : 7 Sample Multiplier: 1

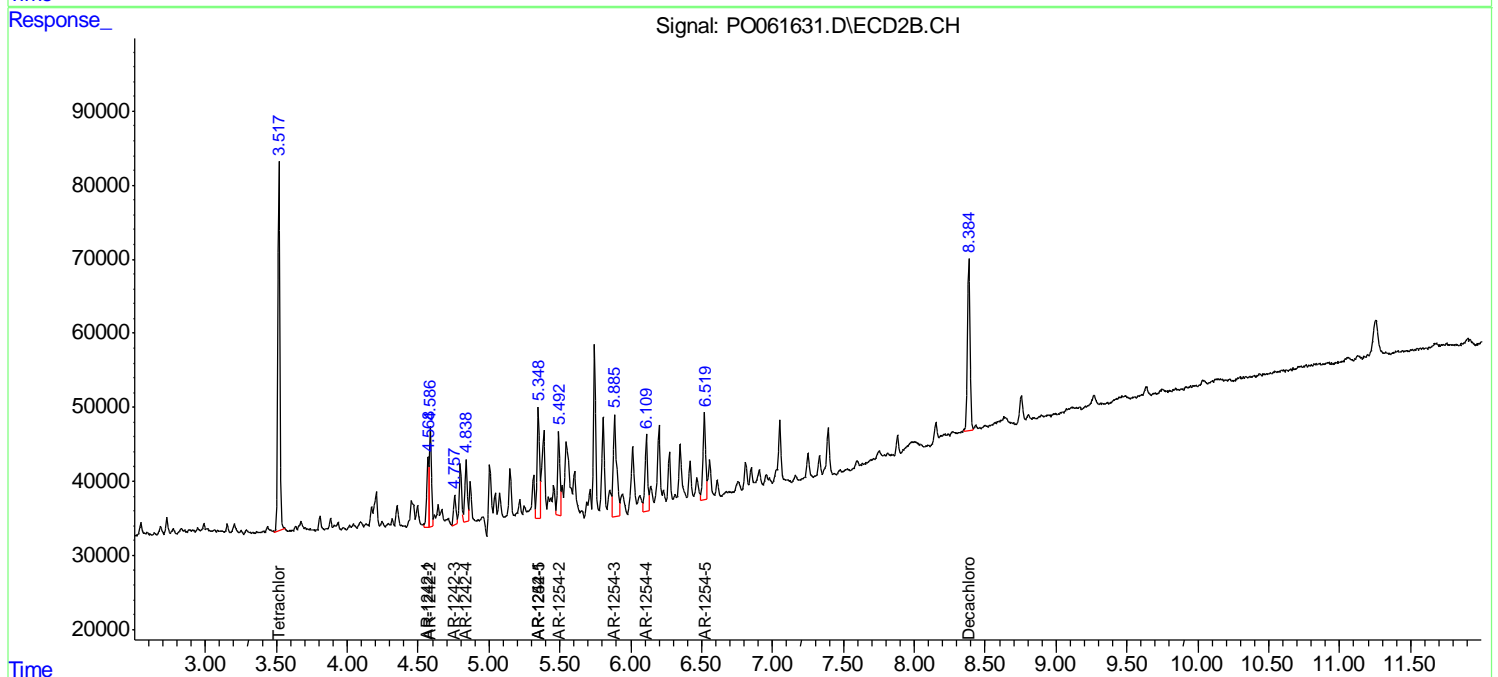
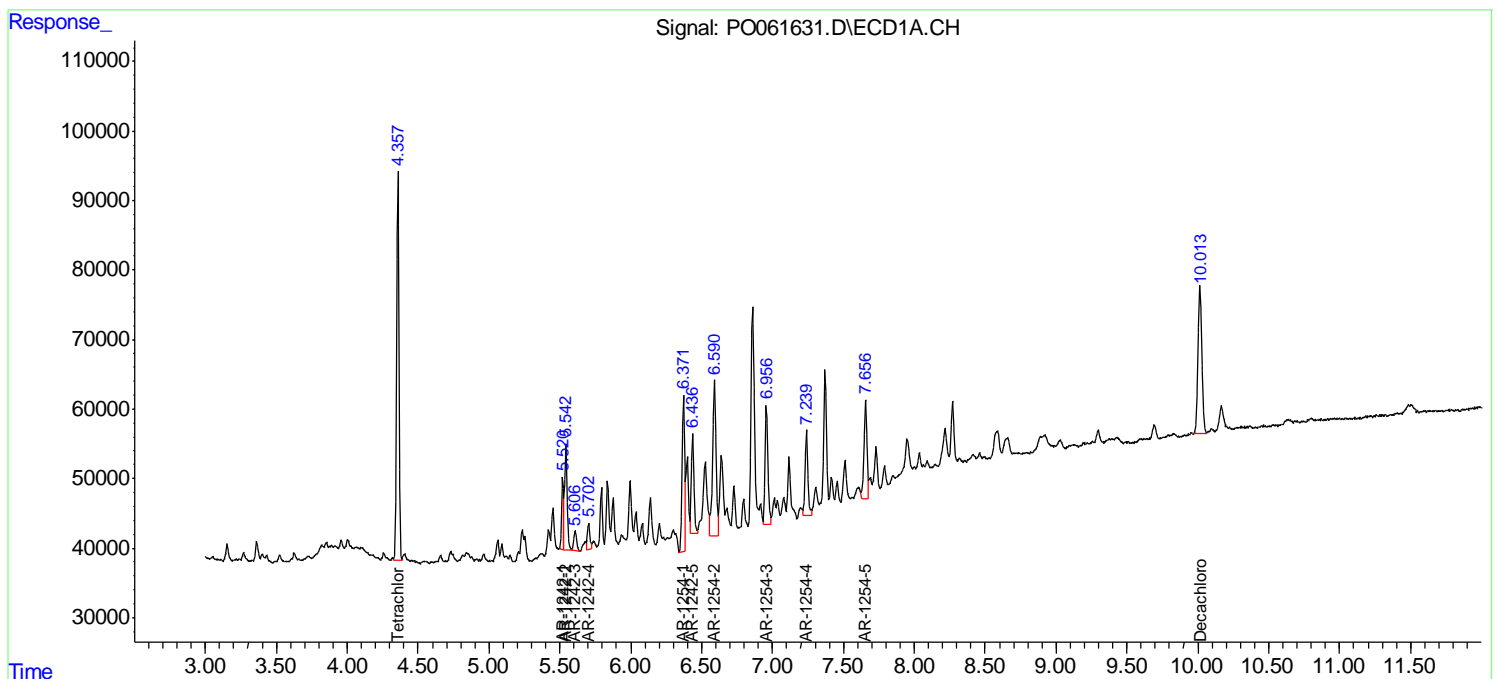
Instrument :
 ECD_O
 Client Sampled :
 20190828-COMPOSITE-DRE

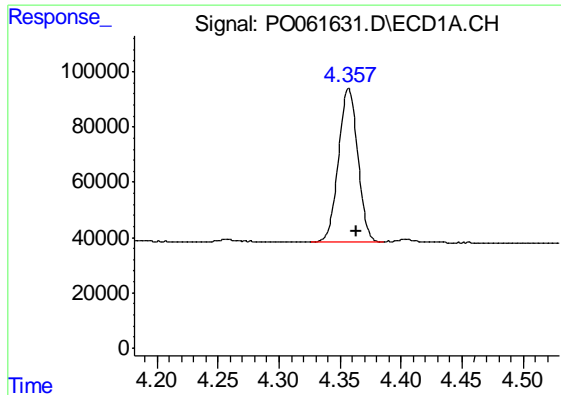
Manual Integrations
 APPROVED

Ankita
 10/4/2019 5:10:32 PM

Integration File signal 1: autoint1.e
 Integration File signal 2: autoint2.e
 Quant Time: Oct 04 02:07:37 2019
 Quant Method : Z:\pestpcbsrv\HPCHEM1\ECD_O\methods\PO100119.M
 Quant Title : GC EXTRACTABLES
 QLast Update : Tue Oct 01 15:34:04 2019
 Response via : Initial Calibration
 Integrator: ChemStation 6890 Scale Mode: Small noise peaks clipped

Volume Inj. : 2 µl
 Signal #1 Phase : ZB-MR1 Signal #2 Phase: ZB-MR2
 Signal #1 Info : 30Mx0.32mmx 0.50µ Signal #2 Info : 30M x 0.32mm x 0.25µm





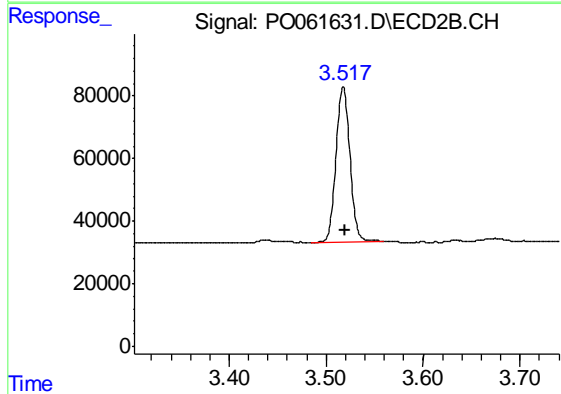
#1 Tetrachloro-m-xylene

R.T.: 4.357 min
 Delta R.T.: -0.006 min
 Response: 614615
 Conc: 14.99 ng/ml

Instrument :
 ECD_O
 ClientSampled :
 20190828-COMPOSITE-DRE

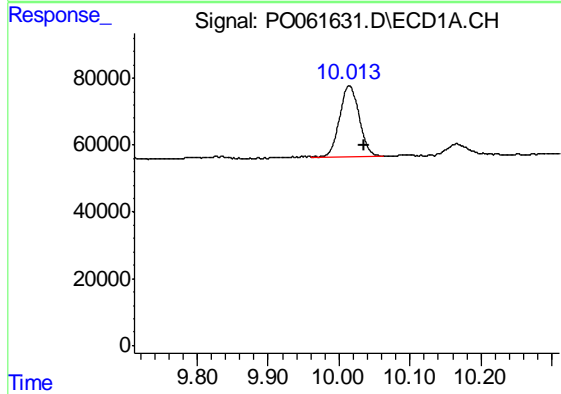
Manual Integrations
 APPROVED

Ankita
 10/4/2019 5:10:32 PM



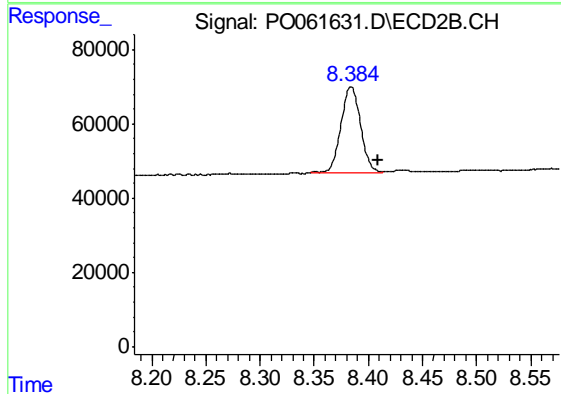
#1 Tetrachloro-m-xylene

R.T.: 3.518 min
 Delta R.T.: -0.001 min
 Response: 496189
 Conc: 15.34 ng/ml



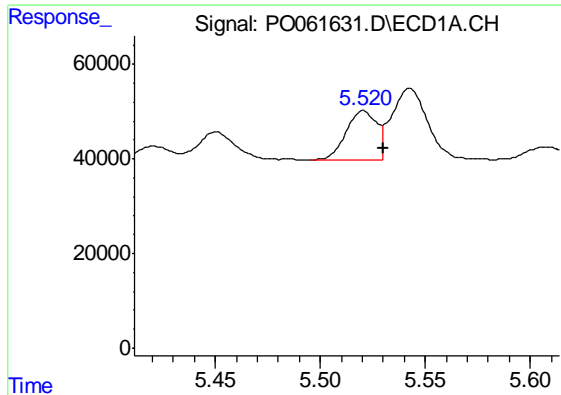
#2 Decachlorobiphenyl

R.T.: 10.014 min
 Delta R.T.: -0.022 min
 Response: 406832
 Conc: 8.74 ng/ml



#2 Decachlorobiphenyl

R.T.: 8.384 min
 Delta R.T.: -0.025 min
 Response: 291351
 Conc: 9.00 ng/ml m



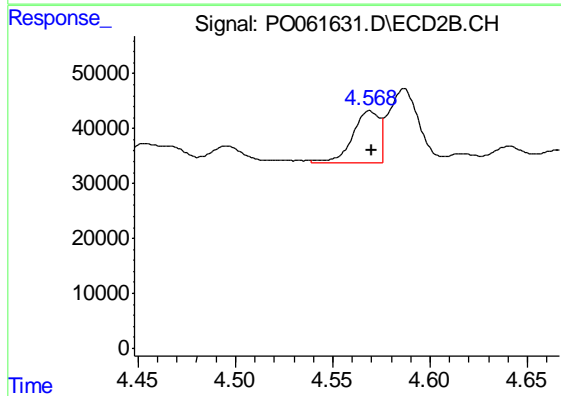
#16 AR-1242-1

R.T.: 5.520 min
 Delta R.T.: -0.010 min
 Response: 104839
 Conc: 73.82 ng/ml

Instrument :
 ECD_O
 ClientSampleId :
 20190828-COMPOSITE-DRE

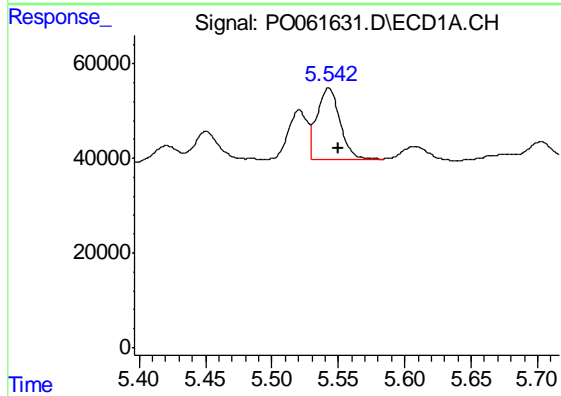
Manual Integrations
 APPROVED

Ankita
 10/4/2019 5:10:32 PM



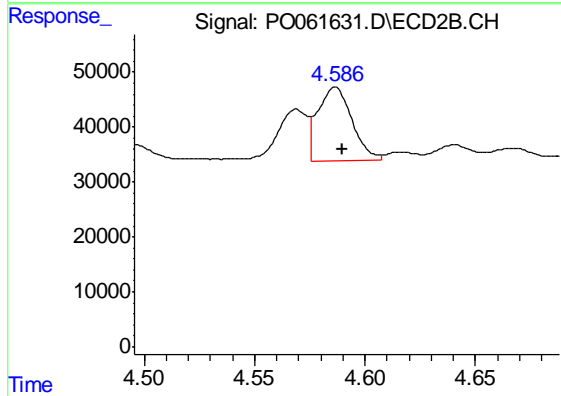
#16 AR-1242-1

R.T.: 4.569 min
 Delta R.T.: -0.001 min
 Response: 88789
 Conc: 86.67 ng/ml



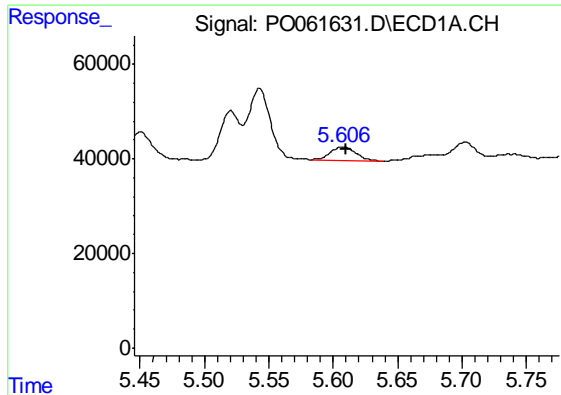
#17 AR-1242-2

R.T.: 5.543 min
 Delta R.T.: -0.007 min
 Response: 183876
 Conc: 91.49 ng/ml



#17 AR-1242-2

R.T.: 4.587 min
 Delta R.T.: -0.003 min
 Response: 145434
 Conc: 103.13 ng/ml



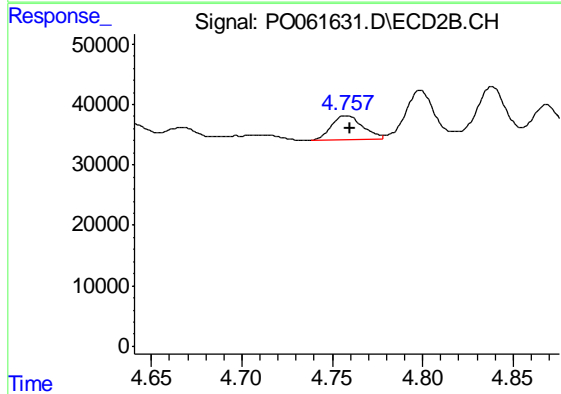
#18 AR-1242-3

R.T.: 5.607 min
 Delta R.T.: -0.003 min
 Response: 40156
 Conc: 31.82 ng/ml

Instrument :
 ECD_O
 ClientSampleId :
 20190828-COMPOSITE-DRE

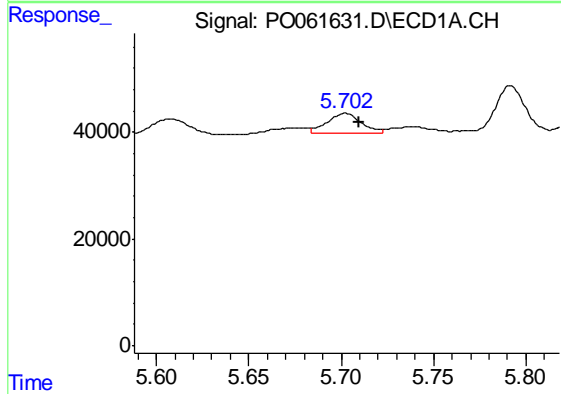
Manual Integrations
 APPROVED

Ankita
 10/4/2019 5:10:32 PM



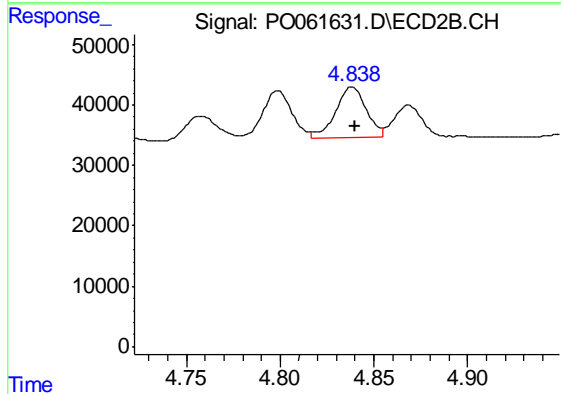
#18 AR-1242-3

R.T.: 4.758 min
 Delta R.T.: -0.002 min
 Response: 48876
 Conc: 62.59 ng/ml



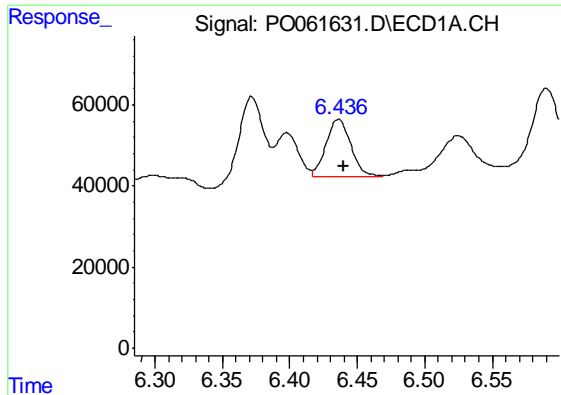
#19 AR-1242-4

R.T.: 5.703 min
 Delta R.T.: -0.007 min
 Response: 49037
 Conc: 46.67 ng/ml



#19 AR-1242-4

R.T.: 4.838 min
 Delta R.T.: -0.002 min
 Response: 96816
 Conc: 117.98 ng/ml



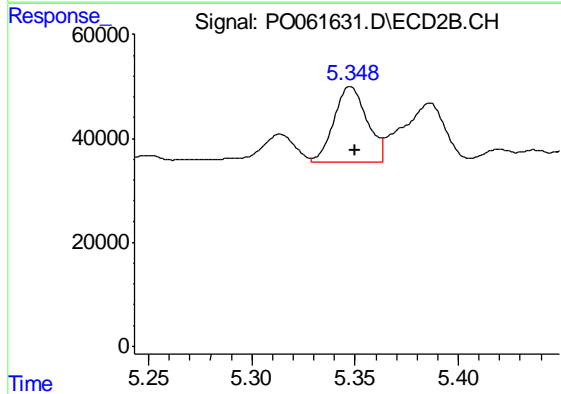
#20 AR-1242-5

R.T.: 6.436 min
 Delta R.T.: -0.004 min
 Response: 185445
 Conc: 138.65 ng/ml m

Instrument :
 ECD_O
 ClientSampleId :
 20190828-COMPOSITE-DRE

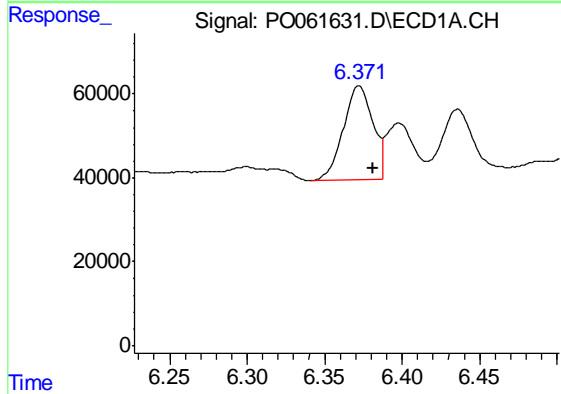
Manual Integrations
 APPROVED

Ankita
 10/4/2019 5:10:32 PM



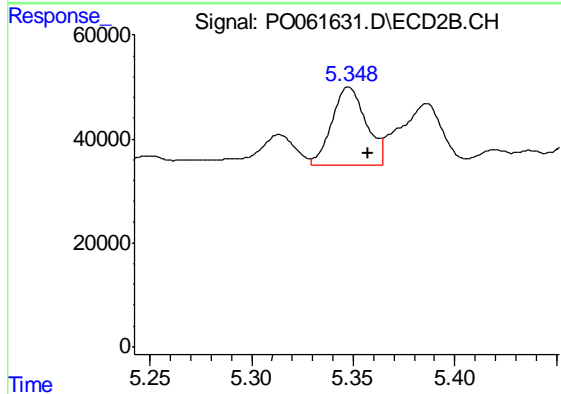
#20 AR-1242-5

R.T.: 5.348 min
 Delta R.T.: -0.002 min
 Response: 163362
 Conc: 152.50 ng/ml m



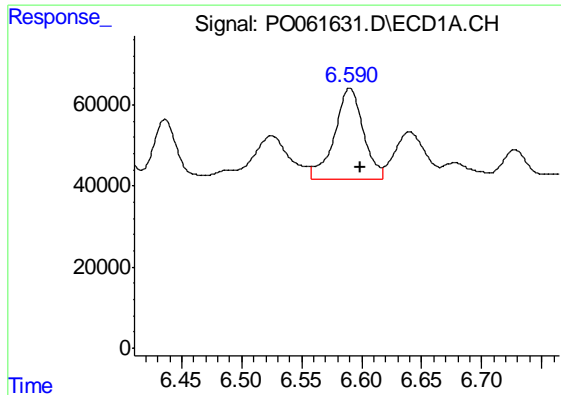
#26 AR-1254-1

R.T.: 6.372 min
 Delta R.T.: -0.009 min
 Response: 295431
 Conc: 129.50 ng/ml



#26 AR-1254-1

R.T.: 5.348 min
 Delta R.T.: -0.009 min
 Response: 176229
 Conc: 80.35 ng/ml m



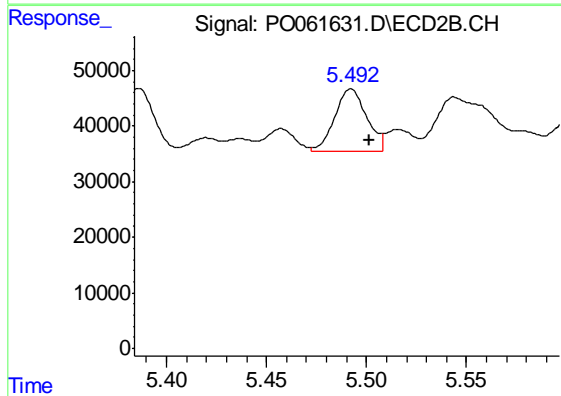
#27 AR-1254-2

R.T.: 6.590 min
 Delta R.T.: -0.010 min
 Response: 371411
 Conc: 102.80 ng/ml m

Instrument :
 ECD_O
 ClientSampleId :
 20190828-COMPOSITE-DRE

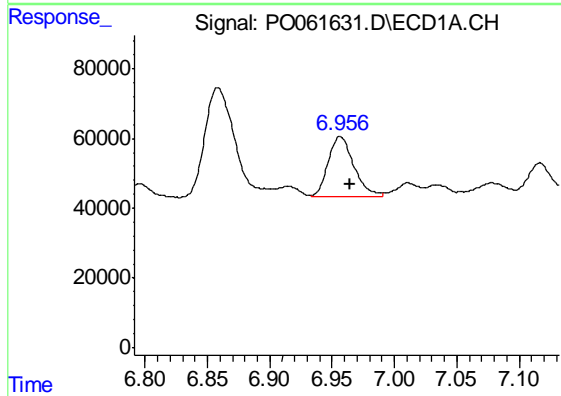
Manual Integrations
 APPROVED

Ankita
 10/4/2019 5:10:32 PM



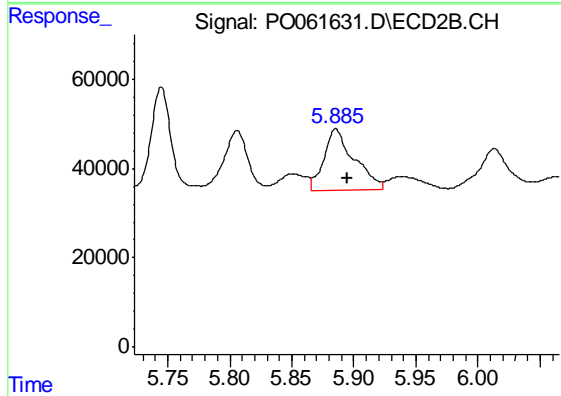
#27 AR-1254-2

R.T.: 5.492 min
 Delta R.T.: -0.010 min
 Response: 125459
 Conc: 63.99 ng/ml m



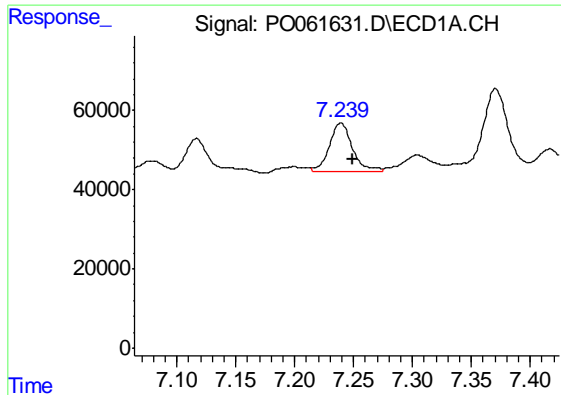
#28 AR-1254-3

R.T.: 6.956 min
 Delta R.T.: -0.008 min
 Response: 246365
 Conc: 63.05 ng/ml m



#28 AR-1254-3

R.T.: 5.885 min
 Delta R.T.: -0.010 min
 Response: 231245
 Conc: 72.63 ng/ml

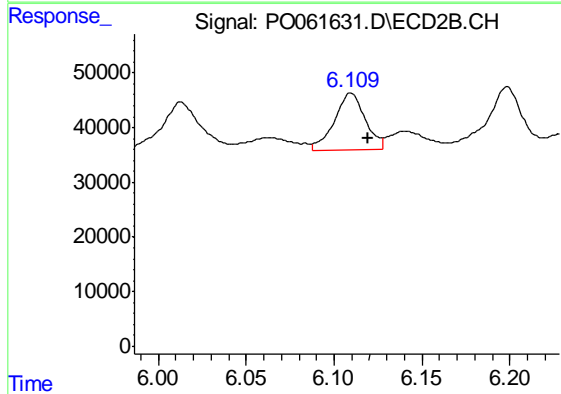


#29 AR-1254-4
 R.T.: 7.239 min
 Delta R.T.: -0.011 min
 Response: 166375
 Conc: 54.93 ng/ml m

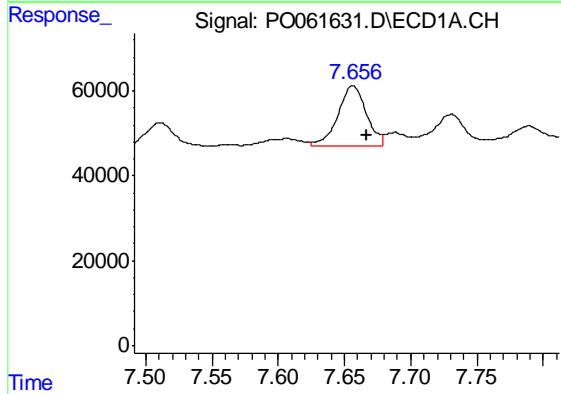
Instrument :
 ECD_O
 ClientSampleId :
 20190828-COMPOSITE-DRE

Manual Integrations
 APPROVED

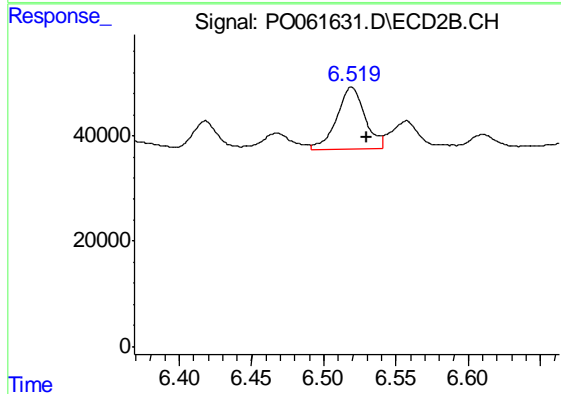
Ankita
 10/4/2019 5:10:32 PM



#29 AR-1254-4
 R.T.: 6.109 min
 Delta R.T.: -0.010 min
 Response: 125866
 Conc: 62.04 ng/ml



#30 AR-1254-5
 R.T.: 7.656 min
 Delta R.T.: -0.011 min
 Response: 214572
 Conc: 68.33 ng/ml m



#30 AR-1254-5
 R.T.: 6.519 min
 Delta R.T.: -0.011 min
 Response: 158247
 Conc: 55.95 ng/ml