

Data Path : Z:\pestpcbsrv\HPCHEM1\ECD_O\Data\PO100620\
 Data File : P0072068.D
 Signal(s) : Signal #1: ECD1A.CH Signal #2: ECD2B.CH
 Acq On : 06 Oct 2020 23:08
 Operator : DD\AJ
 Sample : L4272-46
 Misc :
 ALS Vial : 39 Sample Multiplier: 1

Instrument :
 ECD_O
 ClientSampleId :
 SC-9-(3.5)

Integration File signal 1: autoint1.e
 Integration File signal 2: autoint2.e
 Quant Time: Oct 07 02:37:37 2020
 Quant Method : Z:\pestpcbsrv\HPCHEM1\ECD_O\methods\PO100320.M
 Quant Title : GC EXTRACTABLES
 QLast Update : Mon Oct 05 11:48:20 2020
 Response via : Initial Calibration
 Integrator: ChemStation 6890 Scale Mode: Small noise peaks clipped

Volume Inj. : 2 µl
 Signal #1 Phase : ZB-MR1 Signal #2 Phase: ZB-MR2
 Signal #1 Info : 30Mx0.32mmx 0.50µ Signal #2 Info : 30M x 0.32mm x 0.25µm

Compound	RT#1	RT#2	Resp#1	Resp#2	ng/ml	ng/ml
----------	------	------	--------	--------	-------	-------

System Monitoring Compounds

1) SA Tetrachlo...	4.326	3.510	1775003	835151	24.713	22.297
2) SA Decachlor...	9.933	8.683	1914856	966966	17.391	17.000

Target Compounds

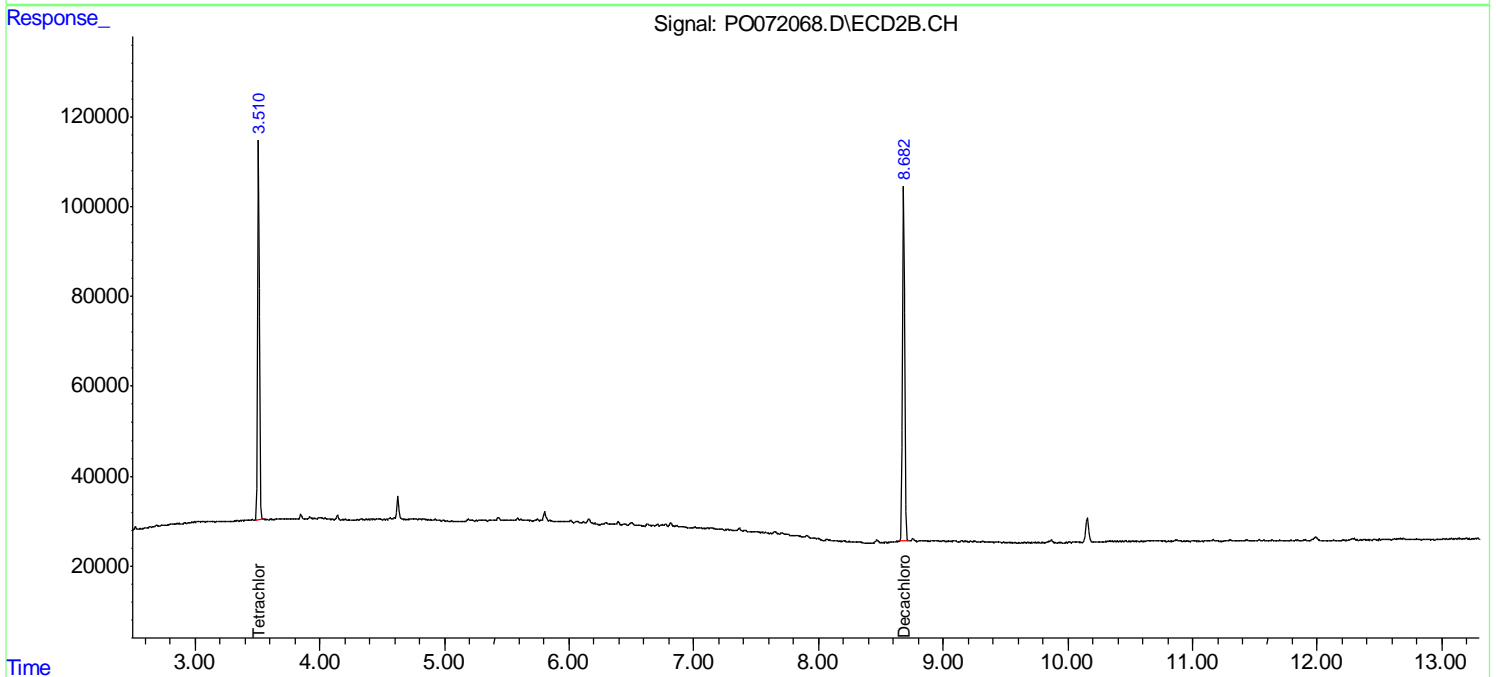
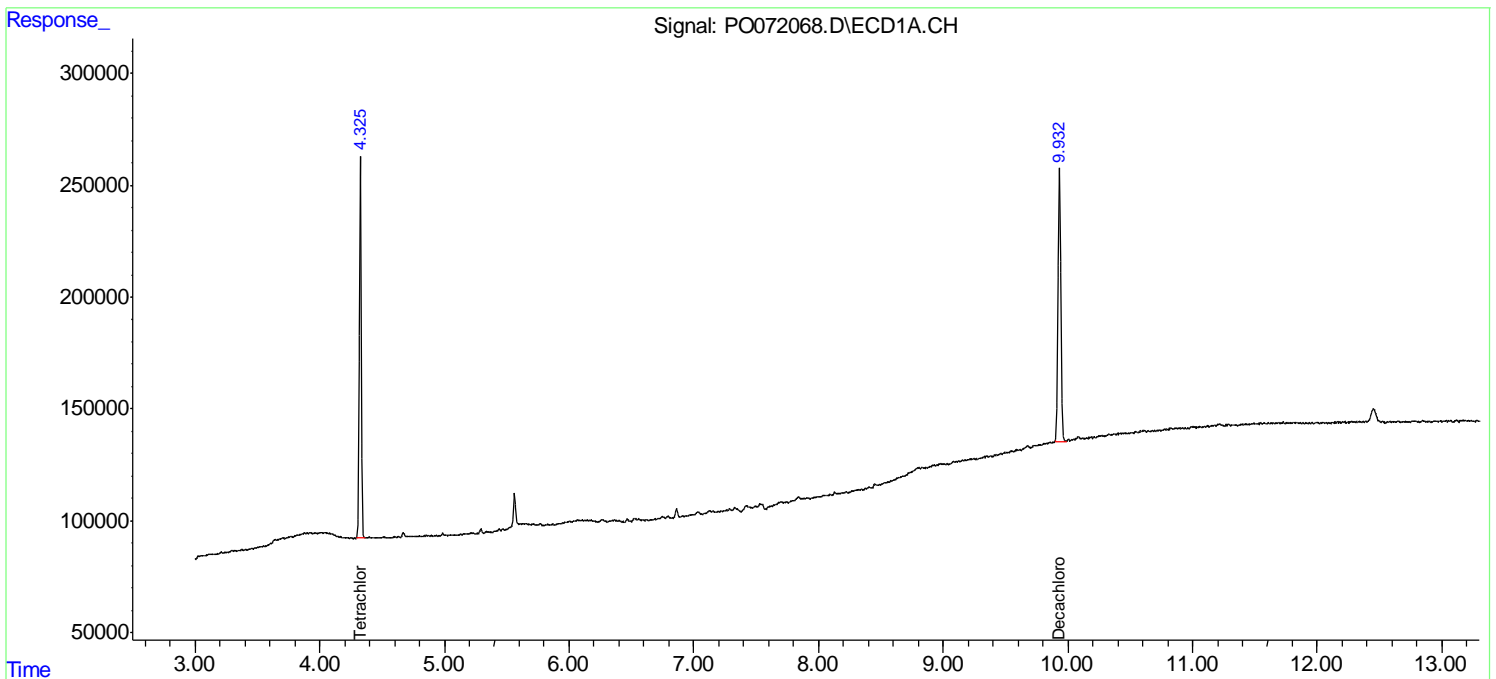
(f)=RT Delta > 1/2 Window (#)=Amounts differ by > 25% (m)=manual int.

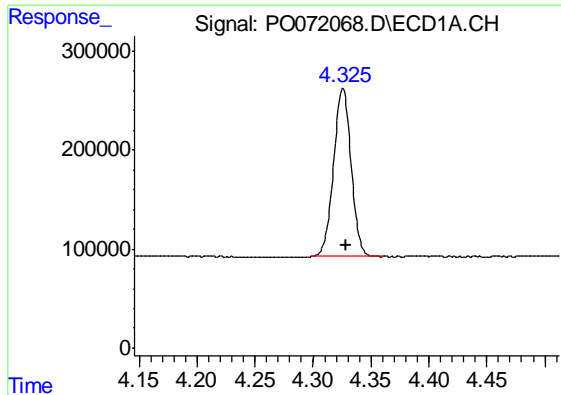
Data Path : Z:\pestpcbsrv\HPCHEM1\ECD_O\Data\PO100620\
 Data File : PO072068.D
 Signal(s) : Signal #1: ECD1A.CH Signal #2: ECD2B.CH
 Acq On : 06 Oct 2020 23:08
 Operator : DD\AJ
 Sample : L4272-46
 Misc :
 ALS Vial : 39 Sample Multiplier: 1

Instrument :
 ECD_O
 ClientSampled :
 SC-9-(3.5)

Integration File signal 1: autoint1.e
 Integration File signal 2: autoint2.e
 Quant Time: Oct 07 02:37:37 2020
 Quant Method : Z:\pestpcbsrv\HPCHEM1\ECD_O\methods\PO100320.M
 Quant Title : GC EXTRACTABLES
 QLast Update : Mon Oct 05 11:48:20 2020
 Response via : Initial Calibration
 Integrator: ChemStation 6890 Scale Mode: Small noise peaks clipped

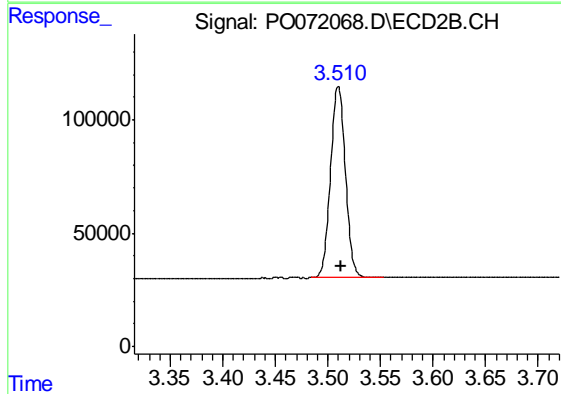
Volume Inj. : 2 µl
 Signal #1 Phase : ZB-MR1 Signal #2 Phase: ZB-MR2
 Signal #1 Info : 30Mx0.32mmx 0.50µ Signal #2 Info : 30M x 0.32mm x 0.25µm



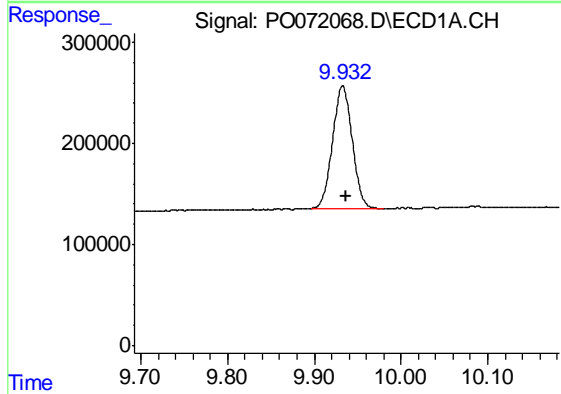


#1 Tetrachloro-m-xylene
R.T.: 4.326 min
Delta R.T.: -0.003 min
Response: 1775003
Conc: 24.71 ng/ml

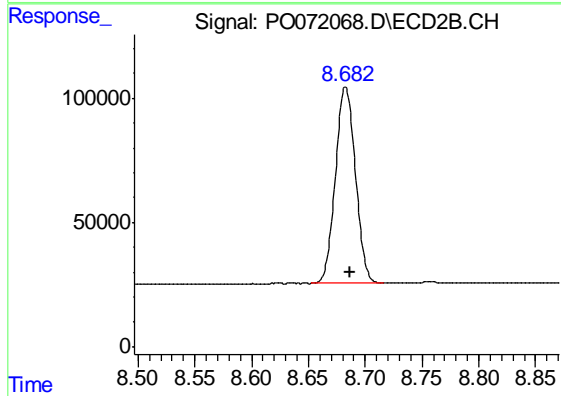
Instrument :
ECD_O
ClientSampleId :
SC-9-(3.5)



#1 Tetrachloro-m-xylene
R.T.: 3.510 min
Delta R.T.: -0.002 min
Response: 835151
Conc: 22.30 ng/ml



#2 Decachlorobiphenyl
R.T.: 9.933 min
Delta R.T.: -0.004 min
Response: 1914856
Conc: 17.39 ng/ml



#2 Decachlorobiphenyl
R.T.: 8.683 min
Delta R.T.: -0.004 min
Response: 966966
Conc: 17.00 ng/ml