

Data Path : Z:\pestpcbsrv\HPCHEM1\ECD_0\Data\PO100818\
 Data File : PO049748.D
 Signal(s) : Signal #1: ECD1A.CH Signal #2: ECD2B.CH
 Acq On : 08 Oct 2018 13:12
 Operator : SM/SJ
 Sample : AR1660ICC050
 Misc :
 ALS Vial : 7 Sample Multiplier: 1

Instrument :
 ECD_0
ClientSampleId :
 AR1660ICC050

Manual Integrations
APPROVED
 Sohil
 10/9/2018 3:35:18 PM

Integration File signal 1: autoint1.e
 Integration File signal 2: autoint2.e
 Quant Time: Oct 08 13:28:49 2018
 Quant Method : Z:\pestpcbsrv\HPCHEM1\ECD_0\methods\PO100818.M
 Quant Title : GC EXTRACTABLES
 QLast Update : Mon Oct 08 13:28:42 2018
 Response via : Initial Calibration
 Integrator: ChemStation 6890 Scale Mode: Small noise peaks clipped

Volume Inj. : 2 µl
 Signal #1 Phase : ZB-MR1 Signal #2 Phase: ZB-MR2
 Signal #1 Info : 30Mx0.32mmx 0.50µ Signal #2 Info : 30M x 0.32mm x 0.25µm

Compound	RT#1	RT#2	Resp#1	Resp#2	ng/ml	ng/ml

System Monitoring Compounds						
1) SA Tetrachlo...	4.383	3.514	1209850	1347959	5.352	5.589
2) SA Decachlor...	10.087	8.436	1924209	1586538	5.775	6.066
Target Compounds						
3) L1 AR-1016-1	5.555	4.580	633727	688250	56.064	55.918m
4) L1 AR-1016-2	5.578	4.598	863042	882026	54.789	54.170m
5) L1 AR-1016-3	5.639	4.771	573963	599236	57.406	62.082
6) L1 AR-1016-4	5.739	4.813	451535	433282	53.749	60.834
7) L1 AR-1016-5	6.033	5.022	523187	567723	60.141	58.225m
31) L7 AR-1260-1	7.156	6.042	1067690	1245119	58.032m	60.300
32) L7 AR-1260-2	7.414	6.229	1395720	1763136	58.202	62.949m
33) L7 AR-1260-3	7.772	6.380	1115531	1450875	59.003	59.735m
34) L7 AR-1260-4	7.998	6.848	1034844	1128151	54.501	58.414
35) L7 AR-1260-5	8.315	7.088	2386238	3024900	56.407	59.000

(f)=RT Delta > 1/2 Window (#)=Amounts differ by > 25% (m)=manual int.

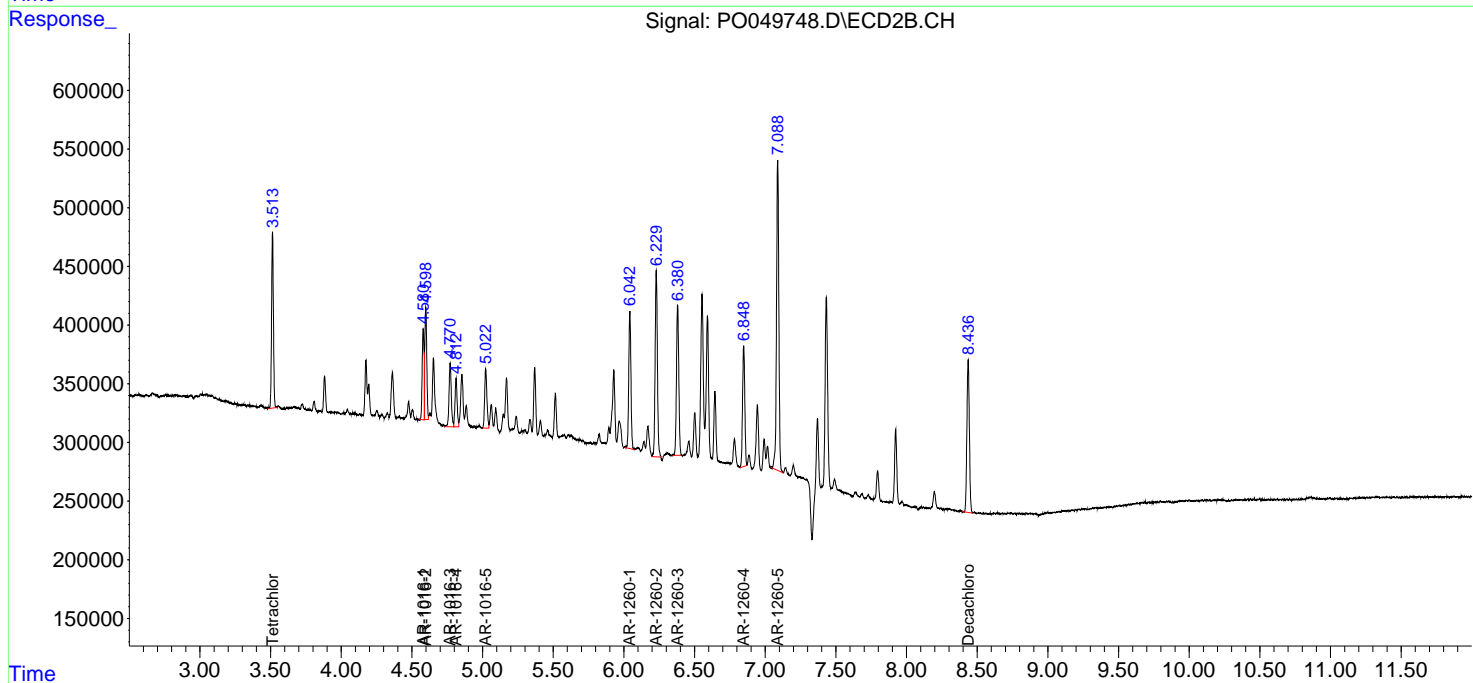
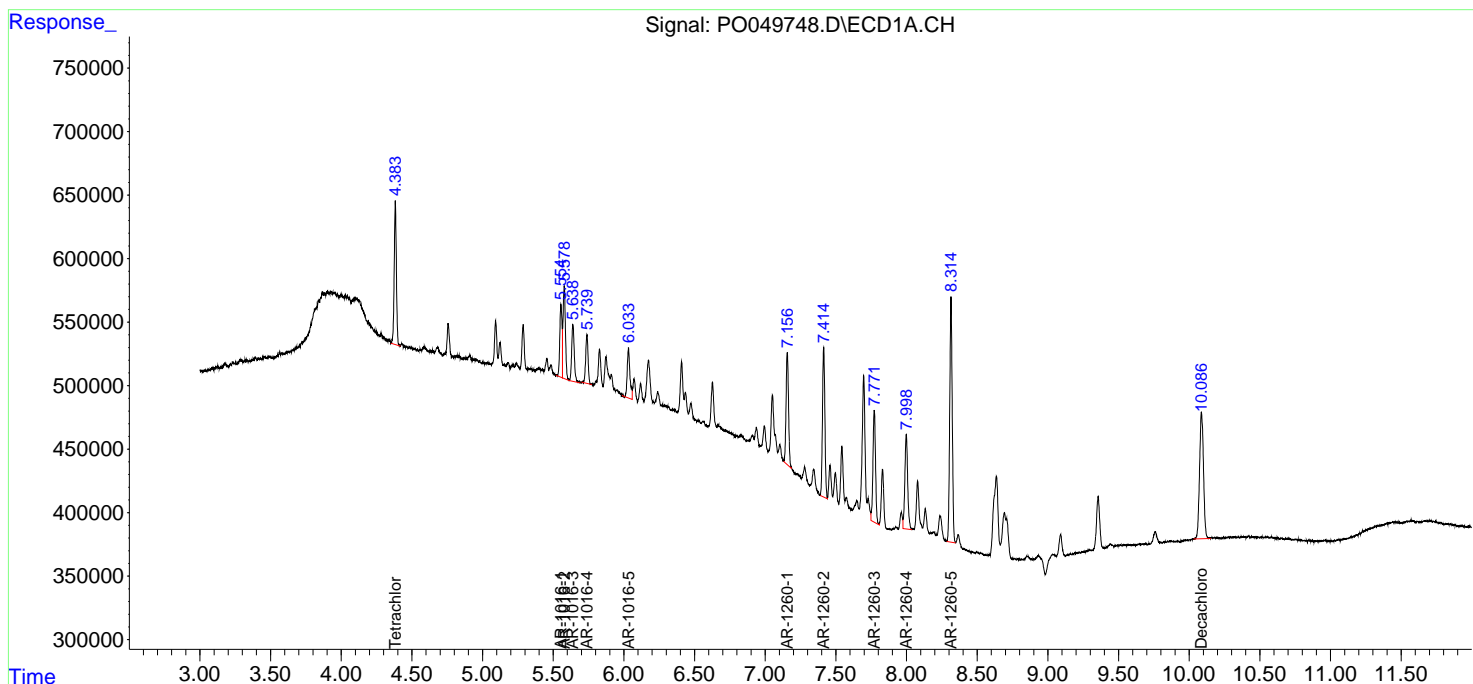
Data Path : Z:\pestpcbsrv\HPCHEM1\ECD_O\Data\PO100818\
 Data File : PO049748.D
 Signal(s) : Signal #1: ECD1A.CH Signal #2: ECD2B.CH
 Acq On : 08 Oct 2018 13:12
 Operator : SM/SJ
 Sample : AR1660ICC050
 Misc :
 ALS Vial : 7 Sample Multiplier: 1

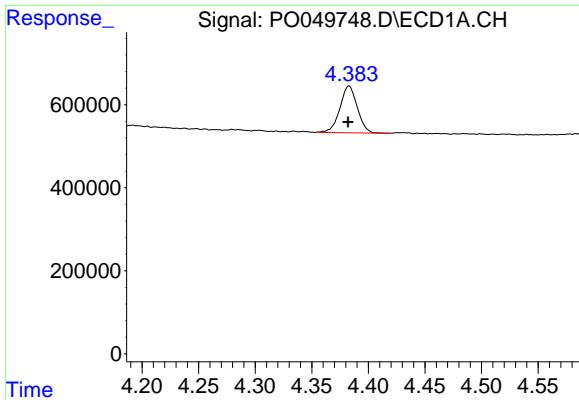
Instrument :
 ECD_O
Client Sampled :
 AR1660ICC050

Manual Integrations
APPROVED
 Sohil
 10/9/2018 3:35:18 PM

Integration File signal 1: autoint1.e
 Integration File signal 2: autoint2.e
 Quant Time: Oct 08 13:28:49 2018
 Quant Method : Z:\pestpcbsrv\HPCHEM1\ECD_O\methods\PO100818.M
 Quant Title : GC EXTRACTABLES
 QLast Update : Mon Oct 08 13:28:42 2018
 Response via : Initial Calibration
 Integrator: ChemStation 6890 Scale Mode: Small noise peaks clipped

Volume Inj. : 2 µl
 Signal #1 Phase : ZB-MR1 Signal #2 Phase: ZB-MR2
 Signal #1 Info : 30Mx0.32mmx 0.50µ Signal #2 Info : 30M x 0.32mm x 0.25µm

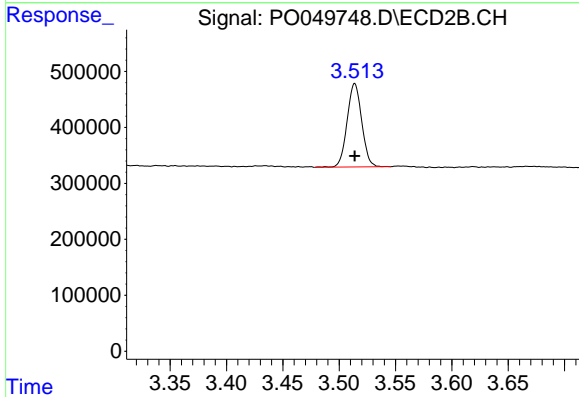




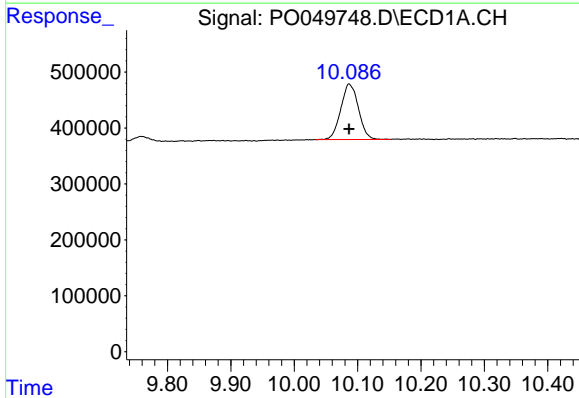
#1 Tetrachloro-m-xylene
 R.T.: 4.383 min
 Delta R.T.: 0.001 min
 Response: 1209850
 Conc: 5.35 ng/ml

Instrument :
 ECD_O
ClientSampled :
 AR1660ICC050

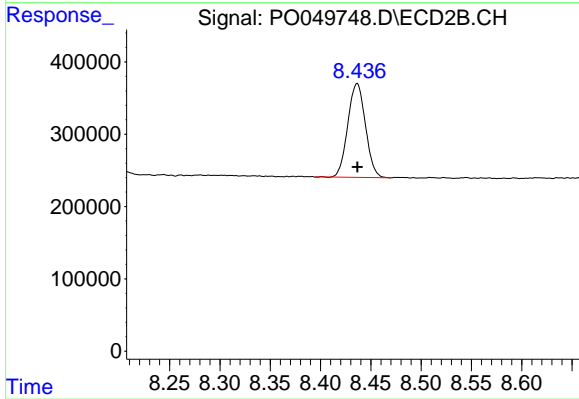
Manual Integrations
APPROVED
 Sohil
 10/9/2018 3:35:18 PM



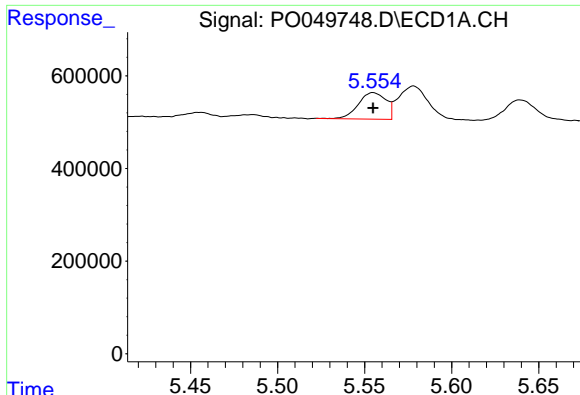
#1 Tetrachloro-m-xylene
 R.T.: 3.514 min
 Delta R.T.: 0.000 min
 Response: 1347959
 Conc: 5.59 ng/ml



#2 Decachlorobiphenyl
 R.T.: 10.087 min
 Delta R.T.: 0.000 min
 Response: 1924209
 Conc: 5.77 ng/ml



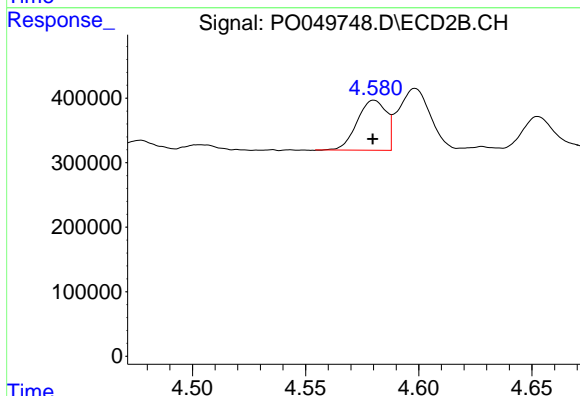
#2 Decachlorobiphenyl
 R.T.: 8.436 min
 Delta R.T.: 0.000 min
 Response: 1586538
 Conc: 6.07 ng/ml



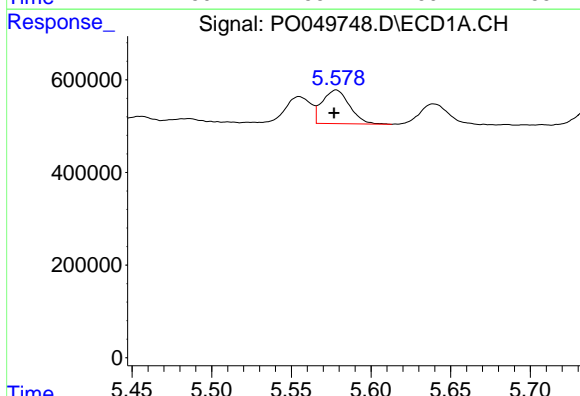
#3 AR-1016-1
 R.T.: 5.555 min
 Delta R.T.: 0.000 min
 Response: 633727
 Conc: 56.06 ng/ml

Instrument :
 ECD_O
ClientSampled :
 AR1660ICC050

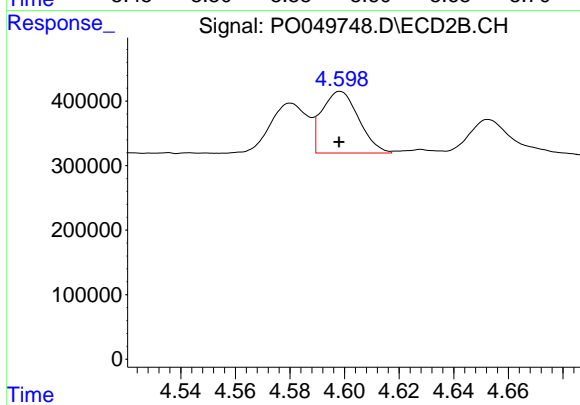
Manual Integrations
APPROVED
 Sohil
 10/9/2018 3:35:18 PM



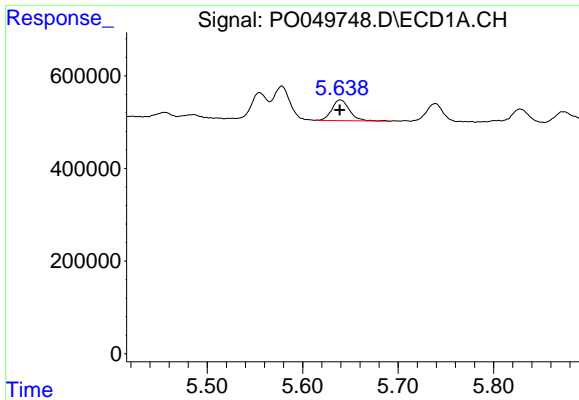
#3 AR-1016-1
 R.T.: 4.580 min
 Delta R.T.: 0.000 min
 Response: 688250
 Conc: 55.92 ng/ml m



#4 AR-1016-2
 R.T.: 5.578 min
 Delta R.T.: 0.001 min
 Response: 863042
 Conc: 54.79 ng/ml



#4 AR-1016-2
 R.T.: 4.598 min
 Delta R.T.: 0.000 min
 Response: 882026
 Conc: 54.17 ng/ml m

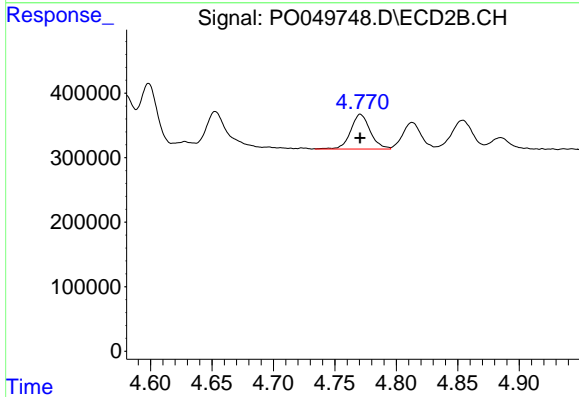


#5 AR-1016-3

R.T.: 5.639 min
 Delta R.T.: 0.000 min
 Response: 573963
 Conc: 57.41 ng/ml

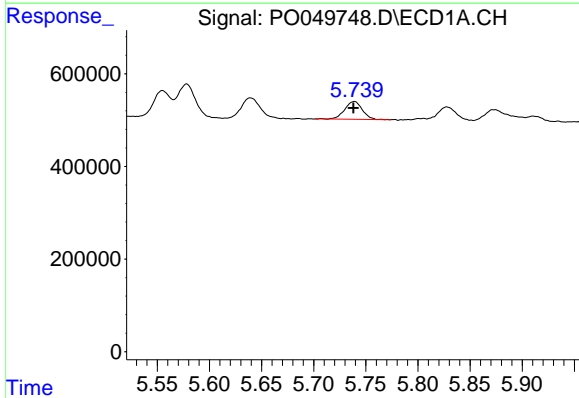
Instrument :
 ECD_O
ClientSampled :
 AR1660ICC050

Manual Integrations
APPROVED
 Sohil
 10/9/2018 3:35:18 PM



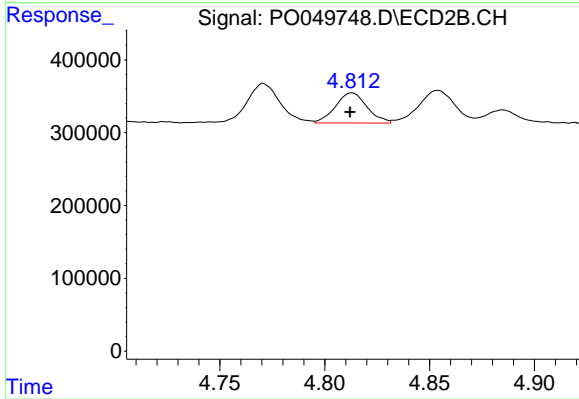
#5 AR-1016-3

R.T.: 4.771 min
 Delta R.T.: 0.000 min
 Response: 599236
 Conc: 62.08 ng/ml



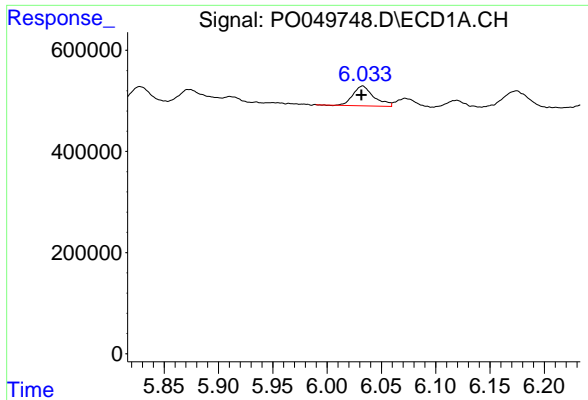
#6 AR-1016-4

R.T.: 5.739 min
 Delta R.T.: 0.000 min
 Response: 451535
 Conc: 53.75 ng/ml



#6 AR-1016-4

R.T.: 4.813 min
 Delta R.T.: 0.000 min
 Response: 433282
 Conc: 60.83 ng/ml

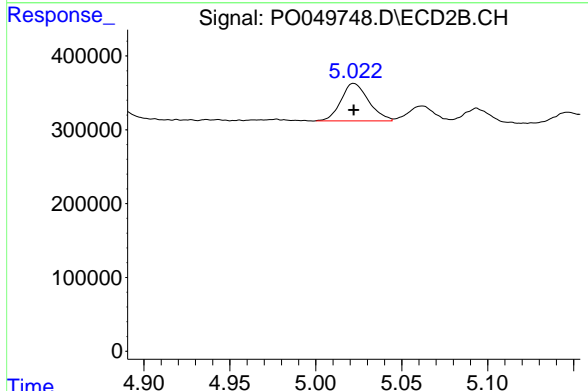


#7 AR-1016-5

R.T.: 6.033 min
 Delta R.T.: 0.000 min
 Response: 523187
 Conc: 60.14 ng/ml

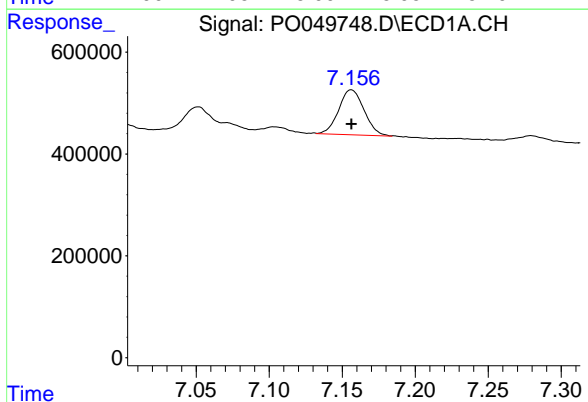
Instrument :
 ECD_O
ClientSampled :
 AR1660ICC050

Manual Integrations
APPROVED
 Sohil
 10/9/2018 3:35:18 PM



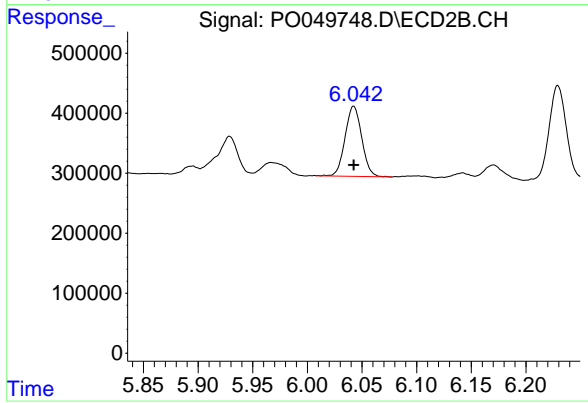
#7 AR-1016-5

R.T.: 5.022 min
 Delta R.T.: 0.000 min
 Response: 567723
 Conc: 58.23 ng/ml m



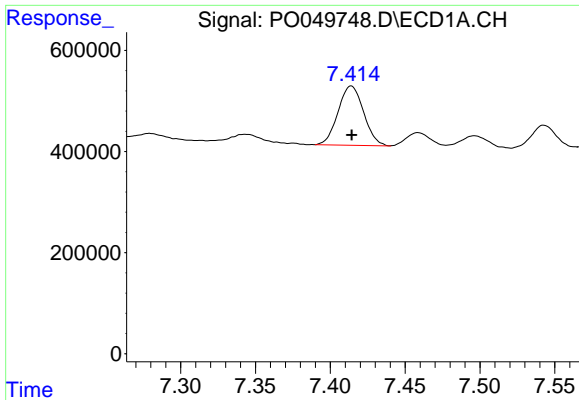
#31 AR-1260-1

R.T.: 7.156 min
 Delta R.T.: 0.000 min
 Response: 1067690
 Conc: 58.03 ng/ml m



#31 AR-1260-1

R.T.: 6.042 min
 Delta R.T.: 0.000 min
 Response: 1245119
 Conc: 60.30 ng/ml

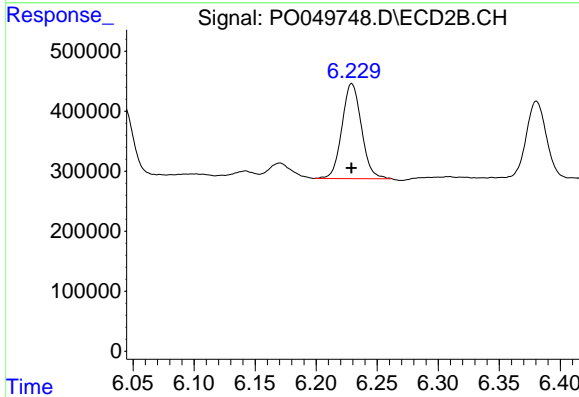


#32 AR-1260-2

R.T.: 7.414 min
 Delta R.T.: 0.000 min
 Response: 1395720
 Conc: 58.20 ng/ml

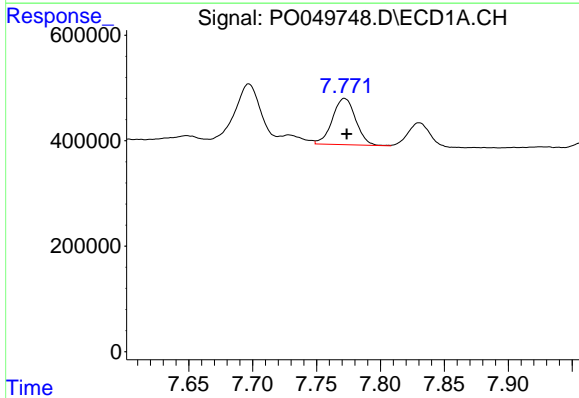
Instrument :
 ECD_O
ClientSampled :
 AR1660ICC050

Manual Integrations
APPROVED
 Sohil
 10/9/2018 3:35:18 PM



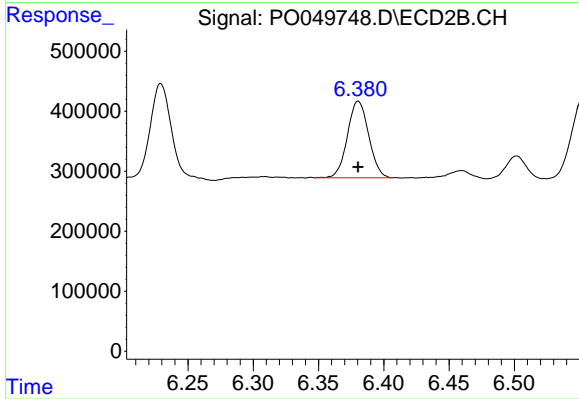
#32 AR-1260-2

R.T.: 6.229 min
 Delta R.T.: 0.000 min
 Response: 1763136
 Conc: 62.95 ng/ml m



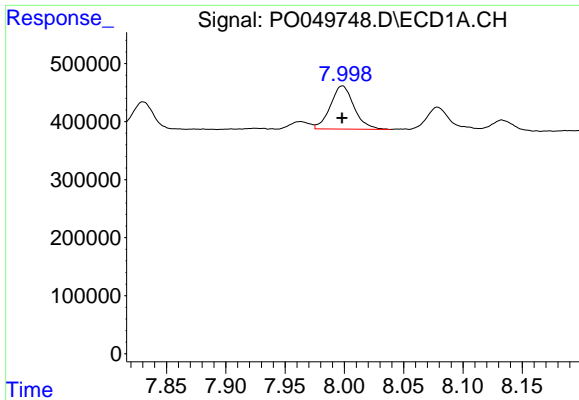
#33 AR-1260-3

R.T.: 7.772 min
 Delta R.T.: -0.002 min
 Response: 1115531
 Conc: 59.00 ng/ml



#33 AR-1260-3

R.T.: 6.380 min
 Delta R.T.: 0.000 min
 Response: 1450875
 Conc: 59.74 ng/ml m

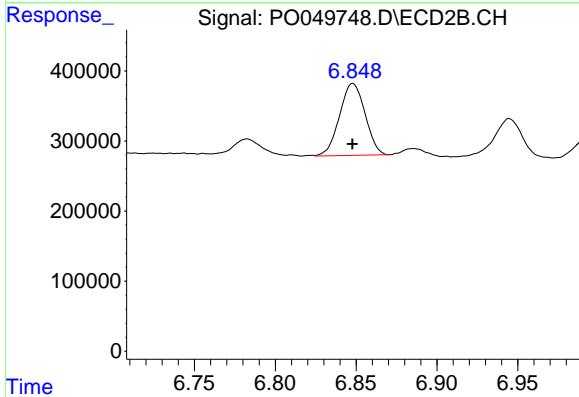


#34 AR-1260-4

R.T.: 7.998 min
 Delta R.T.: 0.000 min
 Response: 1034844
 Conc: 54.50 ng/ml

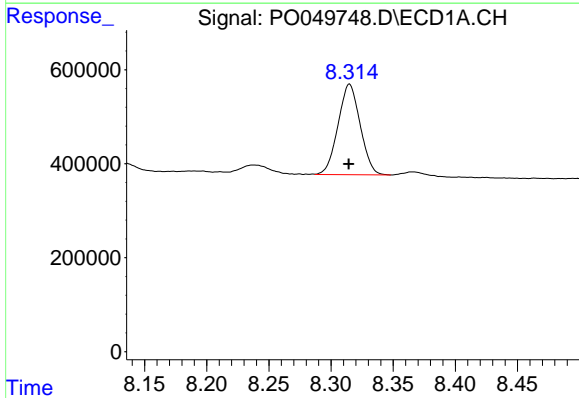
Instrument :
 ECD_O
ClientSampled :
 AR1660ICC050

Manual Integrations
APPROVED
 Sohil
 10/9/2018 3:35:18 PM



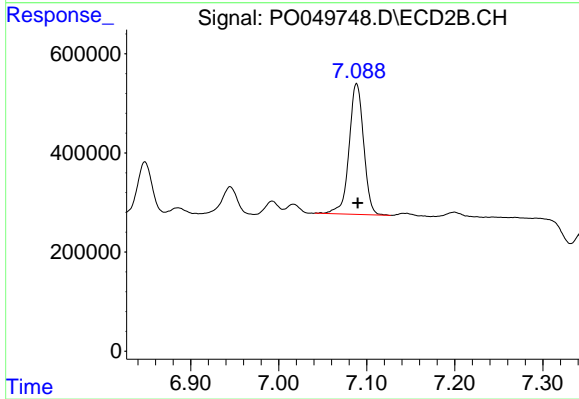
#34 AR-1260-4

R.T.: 6.848 min
 Delta R.T.: 0.000 min
 Response: 1128151
 Conc: 58.41 ng/ml



#35 AR-1260-5

R.T.: 8.315 min
 Delta R.T.: 0.000 min
 Response: 2386238
 Conc: 56.41 ng/ml



#35 AR-1260-5

R.T.: 7.088 min
 Delta R.T.: -0.001 min
 Response: 3024900
 Conc: 59.00 ng/ml