

Data Path : Z:\pestpcbsrv\HPCHEM1\ECD_0\Data\PO100818\
 Data File : PO049765.D
 Signal(s) : Signal #1: ECD1A.CH Signal #2: ECD2B.CH
 Acq On : 08 Oct 2018 18:18
 Operator : SM/SJ
 Sample : AR1660CCC500
 Misc :
 ALS Vial : 3 Sample Multiplier: 1

Instrument :
 ECD_0
 ClientSampleId :
 AR1660CCC500

Manual Integrations
 APPROVED

Sohil
 10/9/2018 3:35:25 PM

Integration File signal 1: autoint1.e
 Integration File signal 2: autoint2.e
 Quant Time: Oct 09 05:18:15 2018
 Quant Method : Z:\pestpcbsrv\HPCHEM1\ECD_0\methods\PO100818.M
 Quant Title : GC EXTRACTABLES
 QLast Update : Mon Oct 08 15:27:38 2018
 Response via : Initial Calibration
 Integrator: ChemStation 6890 Scale Mode: Small noise peaks clipped

Volume Inj. : 2 µl
 Signal #1 Phase : ZB-MR1 Signal #2 Phase: ZB-MR2
 Signal #1 Info : 30Mx0.32mmx 0.50µ Signal #2 Info : 30M x 0.32mm x 0.25µm

Compound	RT#1	RT#2	Resp#1	Resp#2	ng/ml	ng/ml

System Monitoring Compounds						
1) SA Tetrachlo...	4.383	3.513	14198457	15060066	62.810	62.441
2) SA Decachlor...	10.087	8.436	16464444	12921302	49.414	49.400
Target Compounds						
3) L1 AR-1016-1	5.554	4.579	6661080	6945273	589.287m	572.571
4) L1 AR-1016-2	5.577	4.598	9305089	9491018	590.720m	584.227
5) L1 AR-1016-3	5.639	4.771	5889771	5276490	589.073m	546.655
6) L1 AR-1016-4	5.737	4.812	4999837	3880777	595.165m	544.876
7) L1 AR-1016-5	6.032	5.021	4989606	5417501	573.560	558.141m
31) L7 AR-1260-1	7.156	6.042	10436906	10409341	565.660	504.119
32) L7 AR-1260-2	7.413	6.228	13614266	13837625	567.723	493.513
33) L7 AR-1260-3	7.772	6.380	10096399	11969000	534.018	491.152
34) L7 AR-1260-4	7.997	6.847	9368137	9465694	493.381	490.120
35) L7 AR-1260-5	8.314	7.088	20989609	24252587	496.161	473.042

(f)=RT Delta > 1/2 Window (#)=Amounts differ by > 25% (m)=manual int.

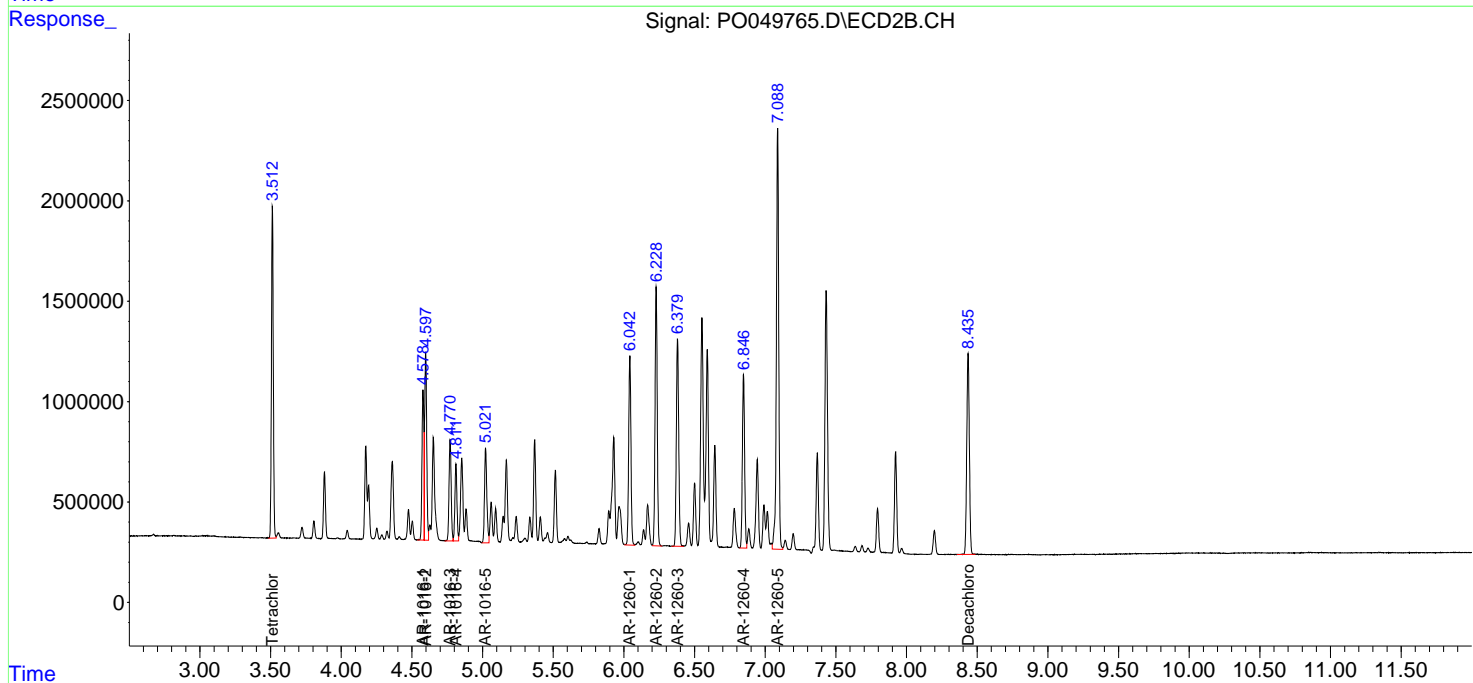
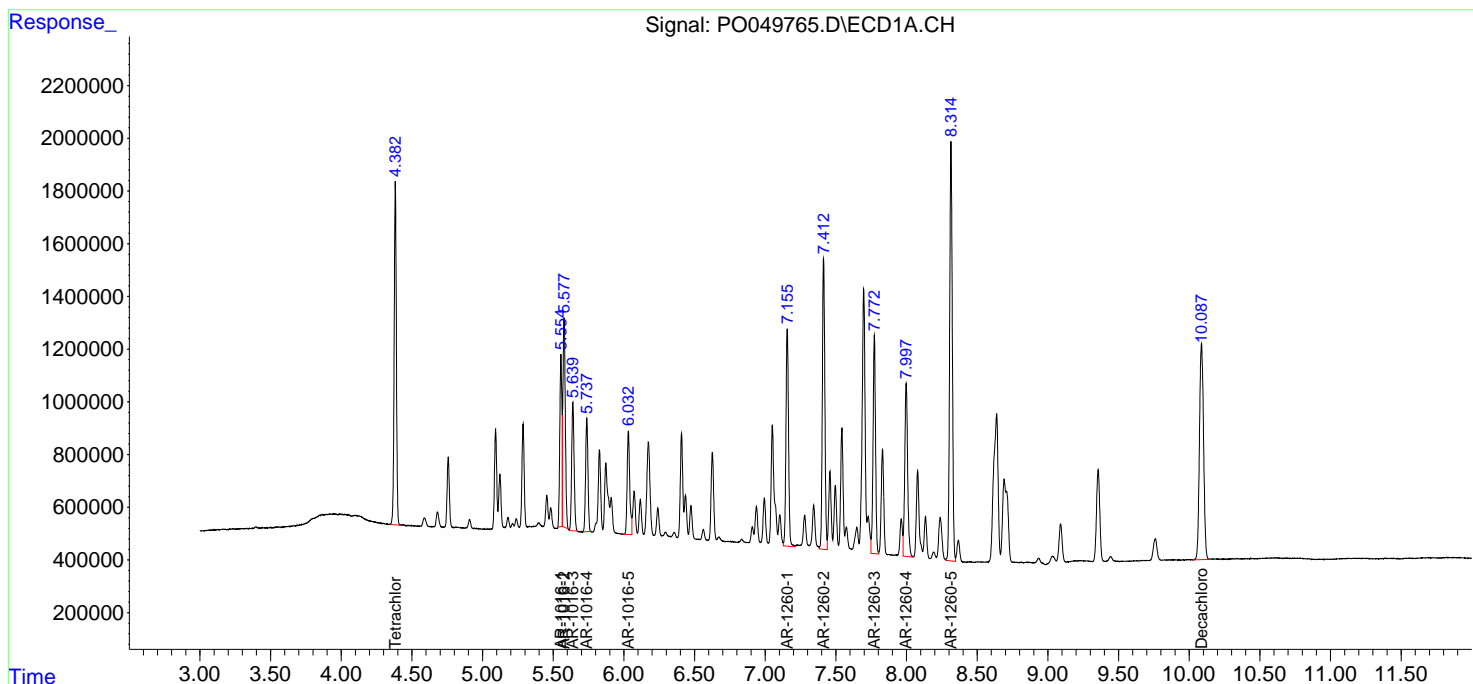
Data Path : Z:\pestpcbsrv\HPCHEM1\ECD_O\Data\PO100818\
 Data File : PO049765.D
 Signal(s) : Signal #1: ECD1A.CH Signal #2: ECD2B.CH
 Acq On : 08 Oct 2018 18:18
 Operator : SM/SJ
 Sample : AR1660CCC500
 Misc :
 ALS Vial : 3 Sample Multiplier: 1

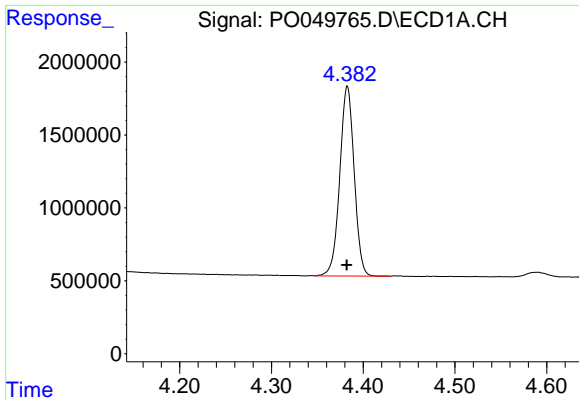
Instrument :
 ECD_O
ClientSampleID :
 AR1660CCC500

Manual Integrations
APPROVED
 Sohil
 10/9/2018 3:35:25 PM

Integration File signal 1: autoint1.e
 Integration File signal 2: autoint2.e
 Quant Time: Oct 09 05:18:15 2018
 Quant Method : Z:\pestpcbsrv\HPCHEM1\ECD_O\methods\PO100818.M
 Quant Title : GC EXTRACTABLES
 QLast Update : Mon Oct 08 15:27:38 2018
 Response via : Initial Calibration
 Integrator: ChemStation 6890 Scale Mode: Small noise peaks clipped

Volume Inj. : 2 µl
 Signal #1 Phase : ZB-MR1 Signal #2 Phase: ZB-MR2
 Signal #1 Info : 30Mx0.32mmx 0.50µ Signal #2 Info : 30M x 0.32mm x 0.25µm

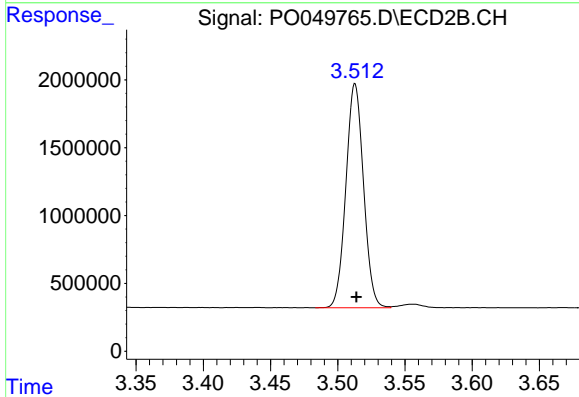




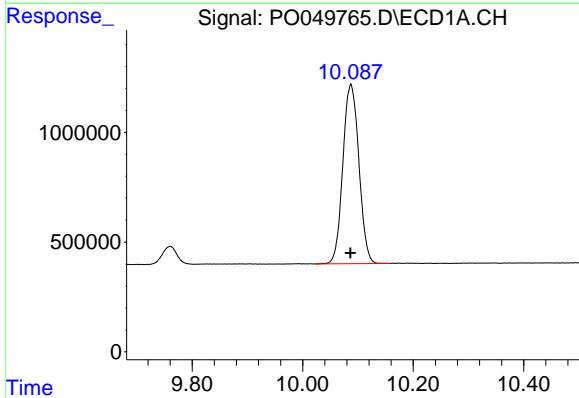
#1 Tetrachloro-m-xylene
 R.T.: 4.383 min
 Delta R.T.: 0.000 min
 Response: 14198457
 Conc: 62.81 ng/ml

Instrument :
 ECD_O
ClientSampled :
 AR1660CCC500

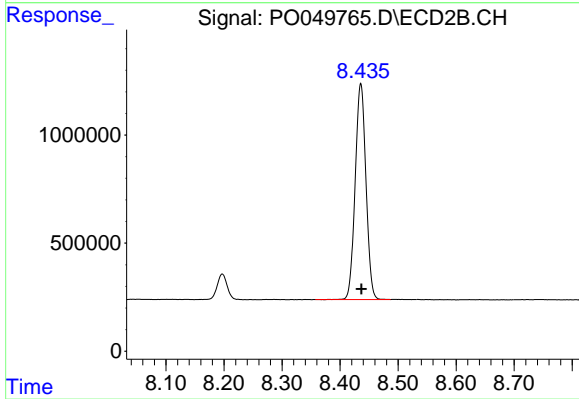
Manual Integrations
APPROVED
 Sohil
 10/9/2018 3:35:25 PM



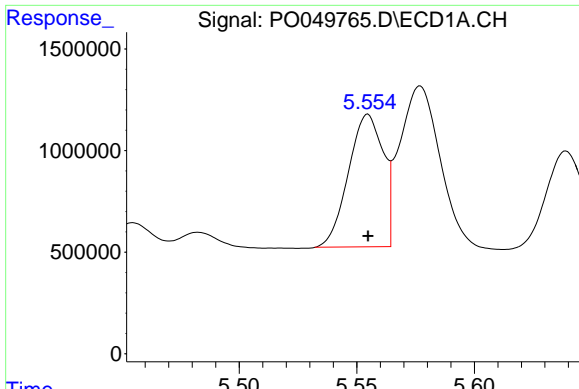
#1 Tetrachloro-m-xylene
 R.T.: 3.513 min
 Delta R.T.: 0.000 min
 Response: 15060066
 Conc: 62.44 ng/ml



#2 Decachlorobiphenyl
 R.T.: 10.087 min
 Delta R.T.: 0.000 min
 Response: 16464444
 Conc: 49.41 ng/ml



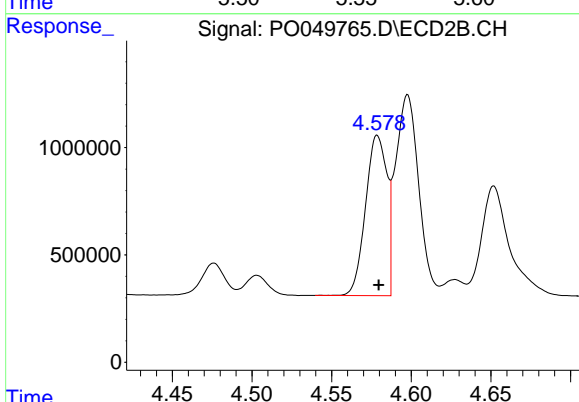
#2 Decachlorobiphenyl
 R.T.: 8.436 min
 Delta R.T.: 0.000 min
 Response: 12921302
 Conc: 49.40 ng/ml



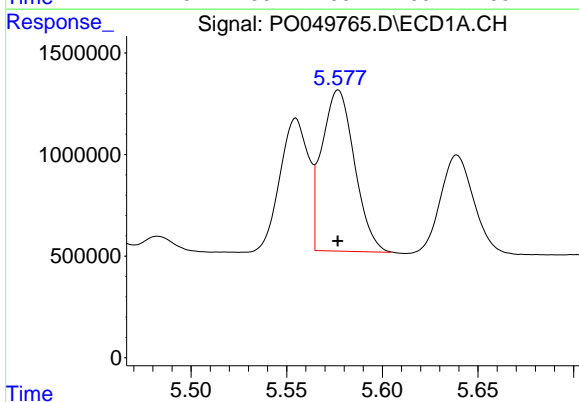
#3 AR-1016-1
 R.T.: 5.554 min
 Delta R.T.: 0.000 min
 Response: 6661080
 Conc: 589.29 ng/ml m

Instrument :
 ECD_O
ClientSampled :
 AR1660CCC500

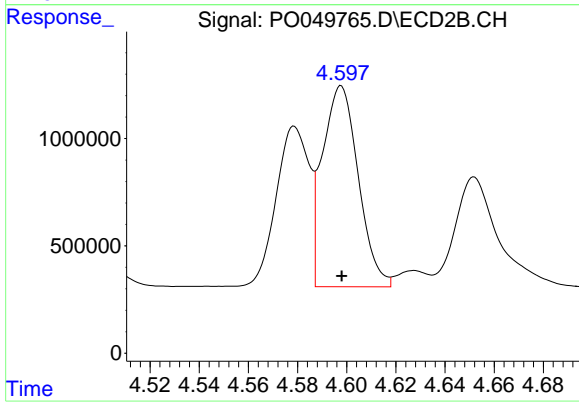
Manual Integrations
APPROVED
 Sohil
 10/9/2018 3:35:25 PM



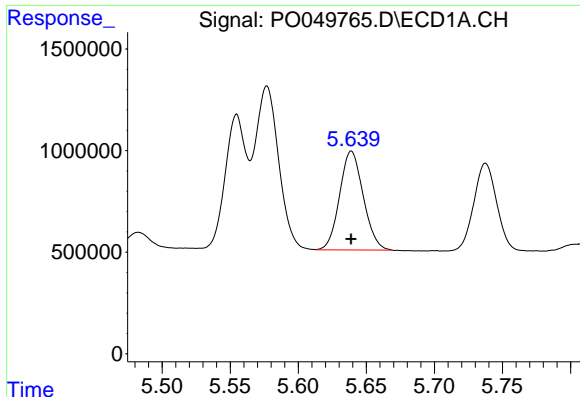
#3 AR-1016-1
 R.T.: 4.579 min
 Delta R.T.: 0.000 min
 Response: 6945273
 Conc: 572.57 ng/ml



#4 AR-1016-2
 R.T.: 5.577 min
 Delta R.T.: 0.000 min
 Response: 9305089
 Conc: 590.72 ng/ml m



#4 AR-1016-2
 R.T.: 4.598 min
 Delta R.T.: 0.000 min
 Response: 9491018
 Conc: 584.23 ng/ml



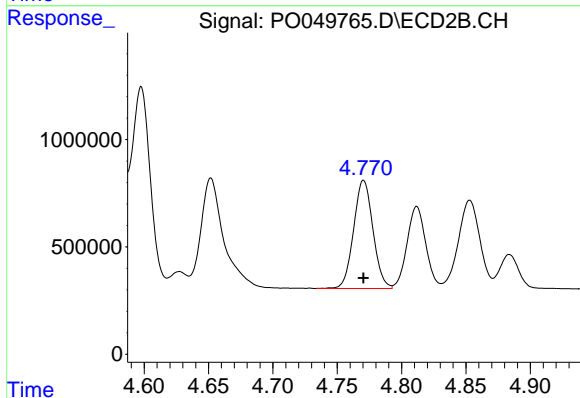
#5 AR-1016-3

R.T.: 5.639 min
 Delta R.T.: 0.000 min
 Response: 5889771
 Conc: 589.07 ng/ml m

Instrument :
 ECD_O
 ClientSampled :
 AR1660CCC500

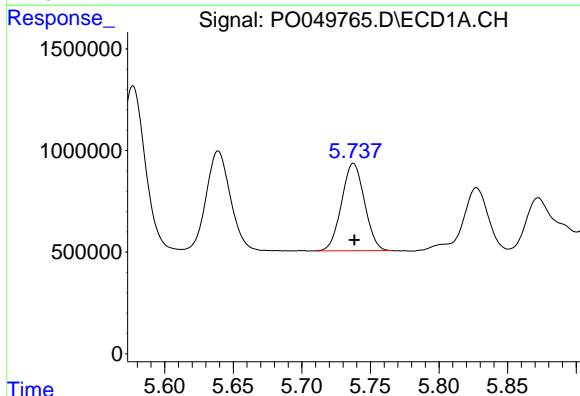
Manual Integrations
 APPROVED

Sohil
 10/9/2018 3:35:25 PM



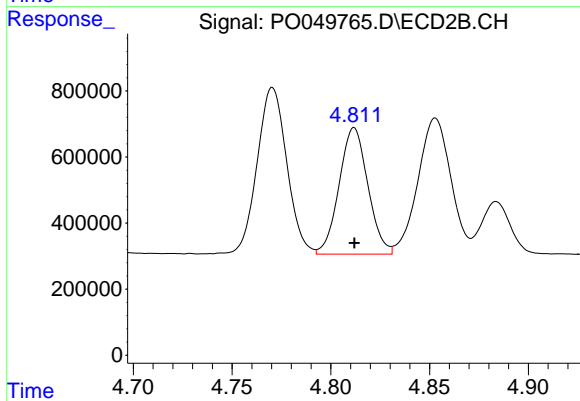
#5 AR-1016-3

R.T.: 4.771 min
 Delta R.T.: 0.000 min
 Response: 5276490
 Conc: 546.66 ng/ml



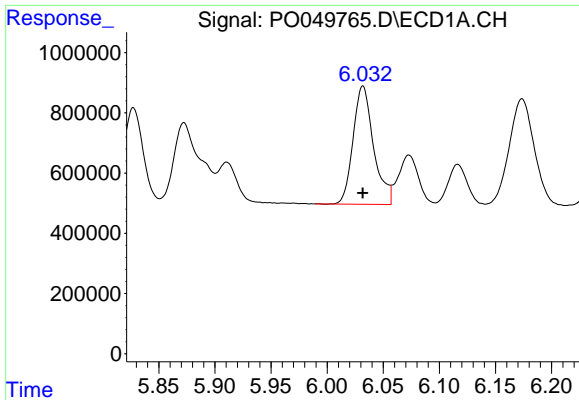
#6 AR-1016-4

R.T.: 5.737 min
 Delta R.T.: -0.001 min
 Response: 4999837
 Conc: 595.17 ng/ml m



#6 AR-1016-4

R.T.: 4.812 min
 Delta R.T.: 0.000 min
 Response: 3880777
 Conc: 544.88 ng/ml

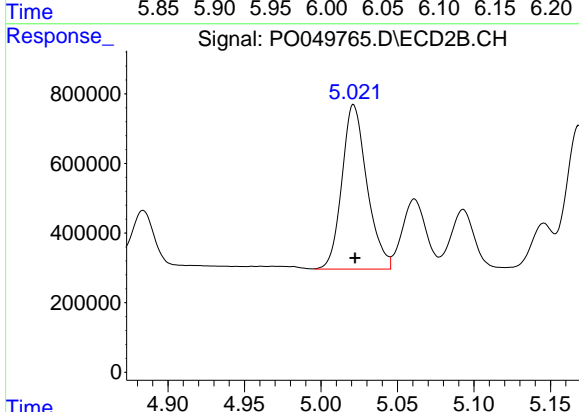


#7 AR-1016-5

R.T.: 6.032 min
 Delta R.T.: 0.000 min
 Response: 4989606
 Conc: 573.56 ng/ml

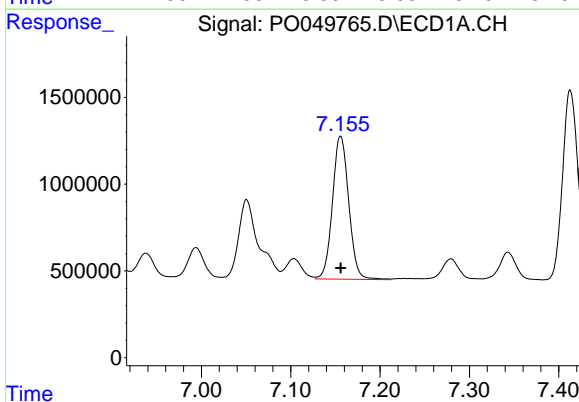
Instrument :
 ECD_O
ClientSampled :
 AR1660CCC500

Manual Integrations
APPROVED
 Sohil
 10/9/2018 3:35:25 PM



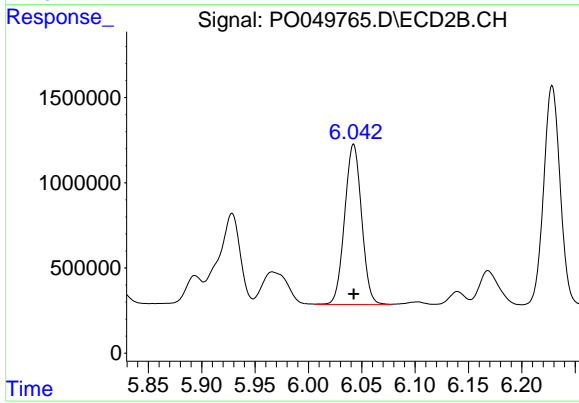
#7 AR-1016-5

R.T.: 5.021 min
 Delta R.T.: -0.001 min
 Response: 5417501
 Conc: 558.14 ng/ml m



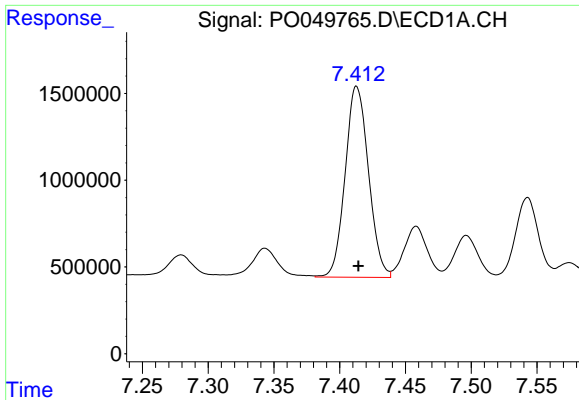
#31 AR-1260-1

R.T.: 7.156 min
 Delta R.T.: 0.000 min
 Response: 10436906
 Conc: 565.66 ng/ml



#31 AR-1260-1

R.T.: 6.042 min
 Delta R.T.: 0.000 min
 Response: 10409341
 Conc: 504.12 ng/ml

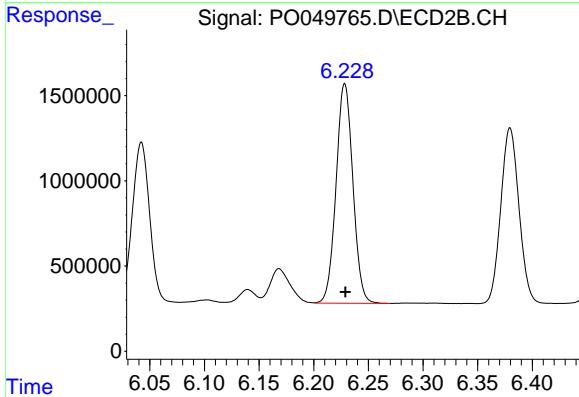


#32 AR-1260-2

R.T.: 7.413 min
 Delta R.T.: -0.001 min
 Response: 13614266
 Conc: 567.72 ng/ml

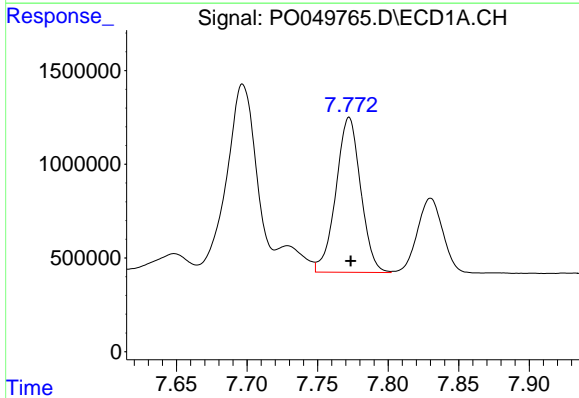
Instrument :
 ECD_O
 ClientSampleId :
 AR1660CCC500

Manual Integrations
 APPROVED
 Sohil
 10/9/2018 3:35:25 PM



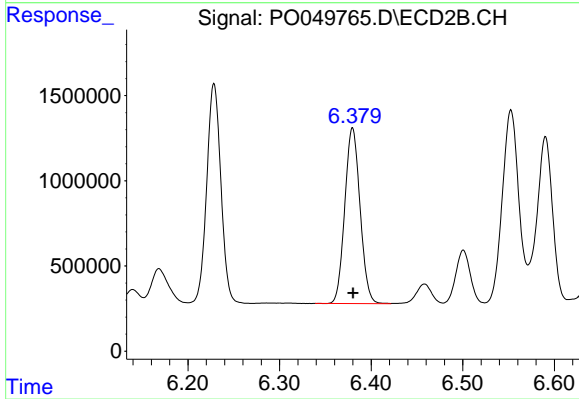
#32 AR-1260-2

R.T.: 6.228 min
 Delta R.T.: 0.000 min
 Response: 13837625
 Conc: 493.51 ng/ml



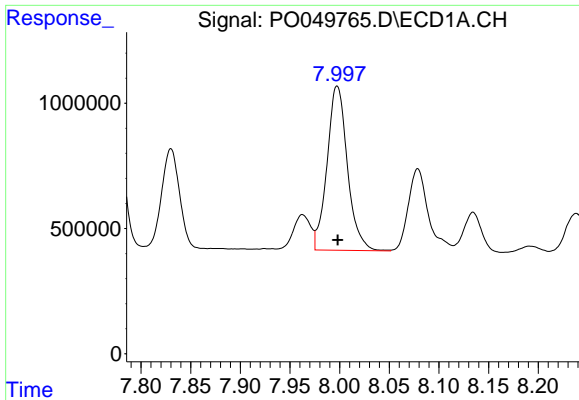
#33 AR-1260-3

R.T.: 7.772 min
 Delta R.T.: -0.001 min
 Response: 10096399
 Conc: 534.02 ng/ml



#33 AR-1260-3

R.T.: 6.380 min
 Delta R.T.: 0.000 min
 Response: 11969000
 Conc: 491.15 ng/ml

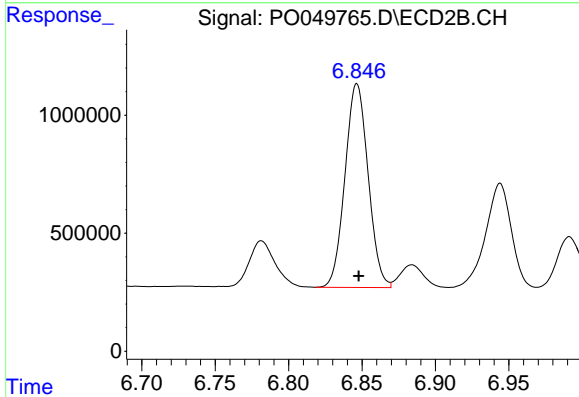


#34 AR-1260-4

R.T.: 7.997 min
 Delta R.T.: 0.000 min
 Response: 9368137
 Conc: 493.38 ng/ml

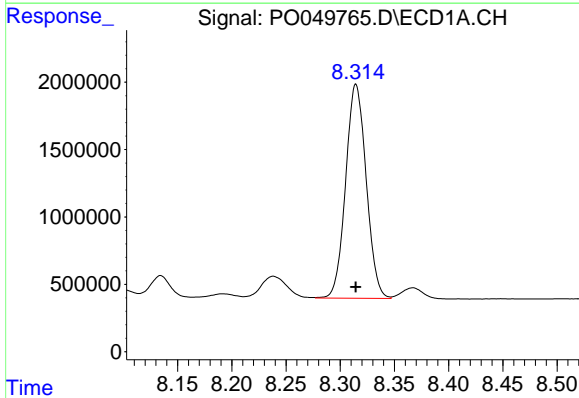
Instrument :
 ECD_O
 ClientSampled :
 AR1660CCC500

Manual Integrations
 APPROVED
 Sohil
 10/9/2018 3:35:25 PM



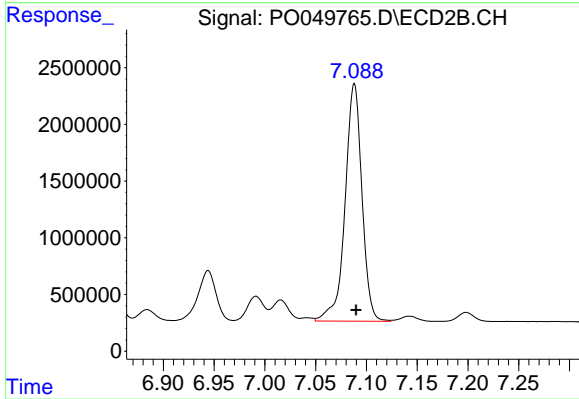
#34 AR-1260-4

R.T.: 6.847 min
 Delta R.T.: -0.001 min
 Response: 9465694
 Conc: 490.12 ng/ml



#35 AR-1260-5

R.T.: 8.314 min
 Delta R.T.: 0.000 min
 Response: 20989609
 Conc: 496.16 ng/ml



#35 AR-1260-5

R.T.: 7.088 min
 Delta R.T.: -0.002 min
 Response: 24252587
 Conc: 473.04 ng/ml