

Data Path : Z:\pestpcbsrv\HPCHEM1\ECD\_0\Data\PO101518\  
 Data File : PO050007.D  
 Signal(s) : Signal #1: ECD1A.CH Signal #2: ECD2B.CH  
 Acq On : 15 Oct 2018 10:18  
 Operator : SM/SJ  
 Sample : AR1660ICC1000  
 Misc :  
 ALS Vial : 3 Sample Multiplier: 1

Instrument :  
 ECD\_0  
 ClientSampleId :  
 AR1660ICC1000

Integration File signal 1: autoint1.e  
 Integration File signal 2: autoint2.e  
 Quant Time: Oct 15 12:26:31 2018  
 Quant Method : Z:\pestpcbsrv\HPCHEM1\ECD\_0\methods\PO101518.M  
 Quant Title : GC EXTRACTABLES  
 QLast Update : Mon Oct 15 12:26:23 2018  
 Response via : Initial Calibration  
 Integrator: ChemStation 6890 Scale Mode: Small noise peaks clipped

Volume Inj. : 2 µl  
 Signal #1 Phase : ZB-MR1 Signal #2 Phase: ZB-MR2  
 Signal #1 Info : 30Mx0.32mmx 0.50µ Signal #2 Info : 30M x 0.32mm x 0.25µm

Compound	RT#1	RT#2	Resp#1	Resp#2	ng/ml	ng/ml
-----						
System Monitoring Compounds						
1) SA Tetrachlo...	4.332	3.362	23999437	20212659	99.018	101.447
2) SA Decachlor...	10.124	8.124	18171528	16574914	98.369	98.373
Target Compounds						
3) L1 AR-1016-1	5.510	4.383	10143638	7046851	1012.313	997.017
4) L1 AR-1016-2	5.532	4.399	15089888	11932699	1009.292	977.838
5) L1 AR-1016-3	5.595	4.564	9317073	6002155	1002.747	999.816
6) L1 AR-1016-4	5.695	4.607	7780117	4699898	1014.137	980.342
7) L1 AR-1016-5	5.993	4.807	7818943	6280004	1002.156	982.425
31) L7 AR-1260-1	7.137	5.794	14716141	13109991	969.519	969.836
32) L7 AR-1260-2	7.399	5.977	17341031	15894802	974.577	975.276
33) L7 AR-1260-3	7.766	6.123	12434691	15033066	958.883	971.862
34) L7 AR-1260-4	7.996	6.580	14160271	11972386	963.581	970.234
35) L7 AR-1260-5	8.319	6.818	26654692	27696506	987.423	989.158

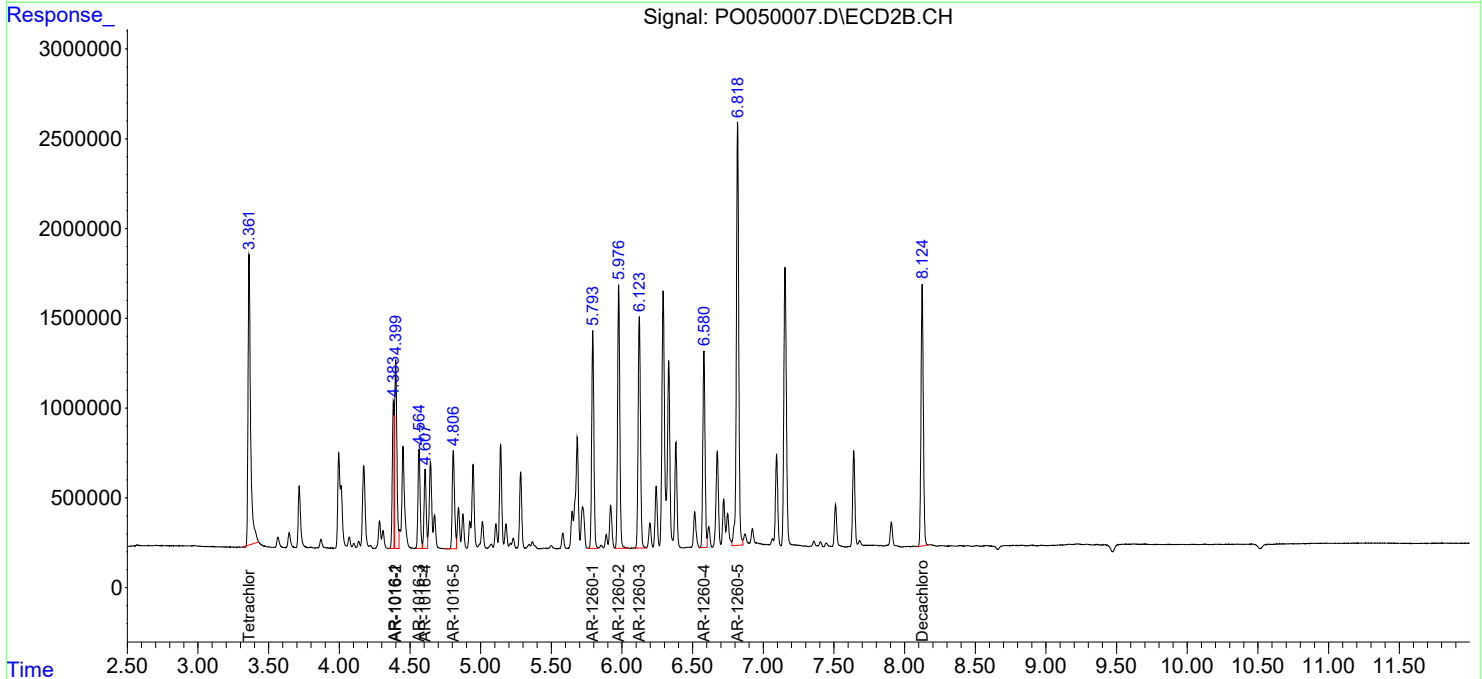
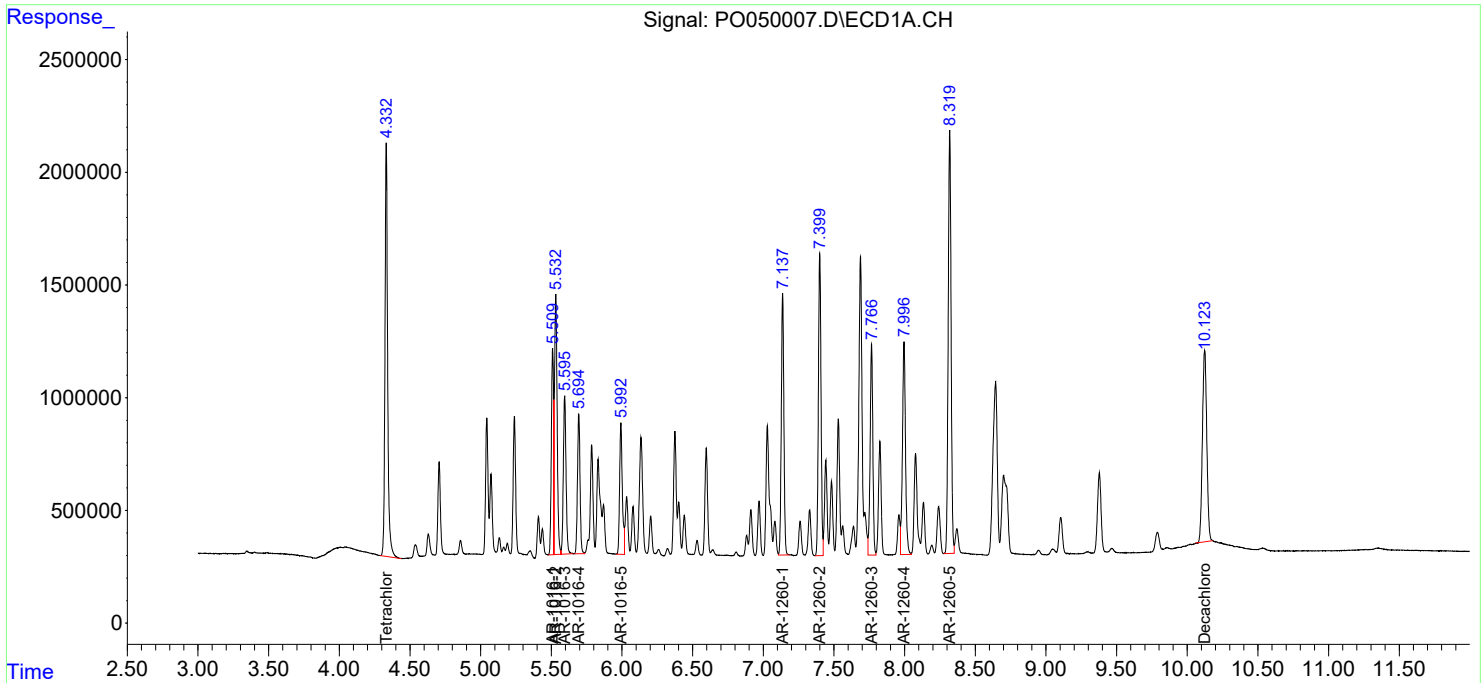
(f)=RT Delta > 1/2 Window (#)=Amounts differ by > 25% (m)=manual int.

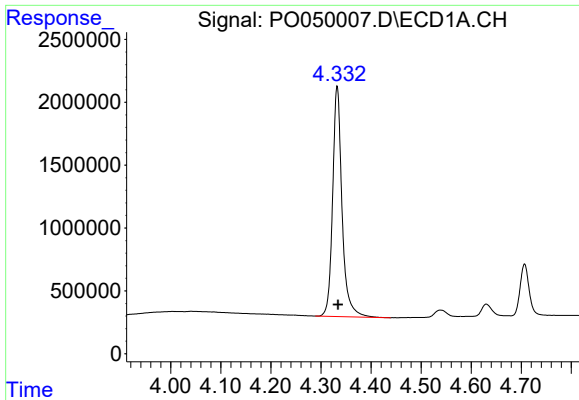
Data Path : Z:\pestpcbsrv\HPCHEM1\ECD\_O\Data\PO101518\  
 Data File : PO050007.D  
 Signal(s) : Signal #1: ECD1A.CH Signal #2: ECD2B.CH  
 Acq On : 15 Oct 2018 10:18  
 Operator : SM/SJ  
 Sample : AR1660ICC1000  
 Misc :  
 ALS Vial : 3 Sample Multiplier: 1

Instrument :  
 ECD\_O  
 ClientSampleID :  
 AR1660ICC1000

Integration File signal 1: autoint1.e  
 Integration File signal 2: autoint2.e  
 Quant Time: Oct 15 12:26:31 2018  
 Quant Method : Z:\pestpcbsrv\HPCHEM1\ECD\_O\methods\PO101518.M  
 Quant Title : GC EXTRACTABLES  
 QLast Update : Mon Oct 15 12:26:23 2018  
 Response via : Initial Calibration  
 Integrator: ChemStation 6890 Scale Mode: Small noise peaks clipped

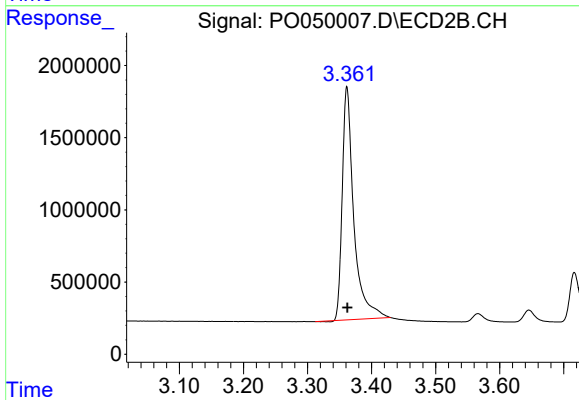
Volume Inj. : 2 µl  
 Signal #1 Phase : ZB-MR1 Signal #2 Phase: ZB-MR2  
 Signal #1 Info : 30Mx0.32mmx 0.50µ Signal #2 Info : 30M x 0.32mm x 0.25µm



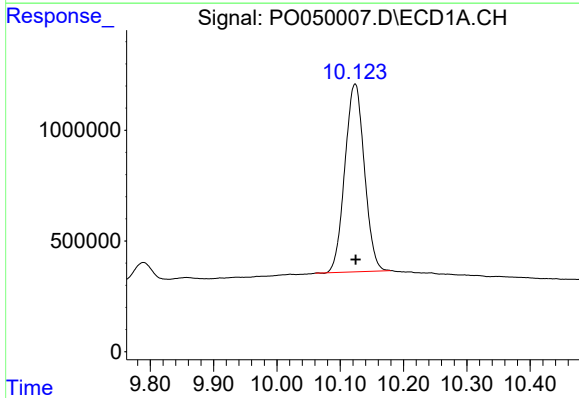


#1 Tetrachloro-m-xylene  
 R.T.: 4.332 min  
 Delta R.T.: -0.002 min  
 Response: 23999437  
 Conc: 99.02 ng/ml

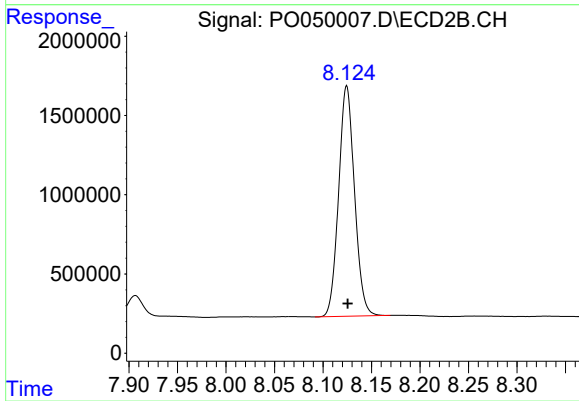
Instrument :  
 ECD\_O  
 ClientSampleId :  
 AR1660ICC1000



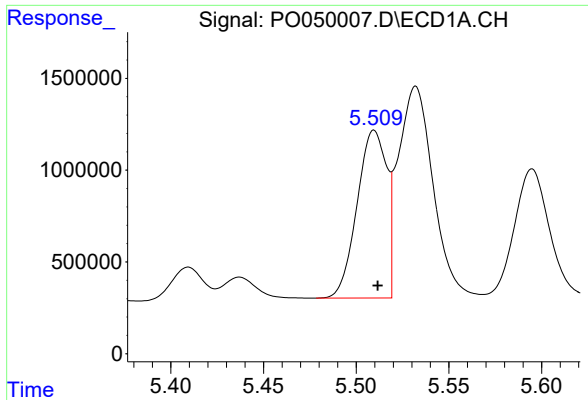
#1 Tetrachloro-m-xylene  
 R.T.: 3.362 min  
 Delta R.T.: 0.000 min  
 Response: 20212659  
 Conc: 101.45 ng/ml



#2 Decachlorobiphenyl  
 R.T.: 10.124 min  
 Delta R.T.: -0.001 min  
 Response: 18171528  
 Conc: 98.37 ng/ml

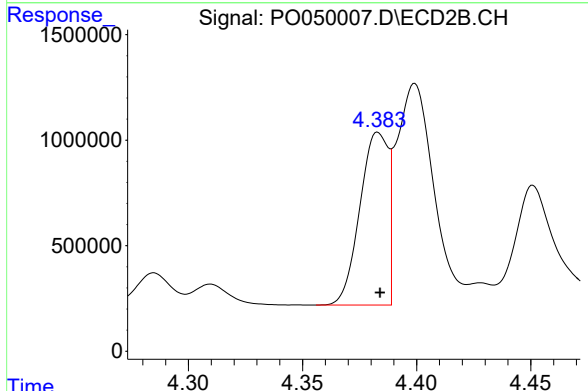


#2 Decachlorobiphenyl  
 R.T.: 8.124 min  
 Delta R.T.: 0.000 min  
 Response: 16574914  
 Conc: 98.37 ng/ml

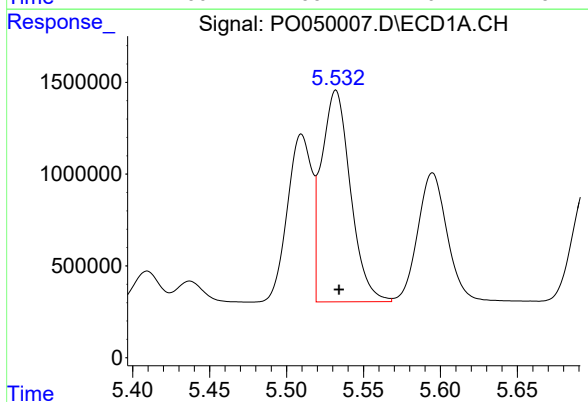


#3 AR-1016-1  
 R.T.: 5.510 min  
 Delta R.T.: -0.002 min  
 Response: 10143638  
 Conc: 1012.31 ng/ml

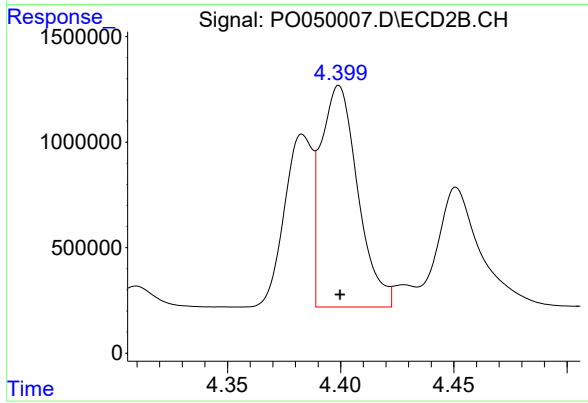
**Instrument :**  
 ECD\_O  
**ClientSampled :**  
 AR1660ICC1000



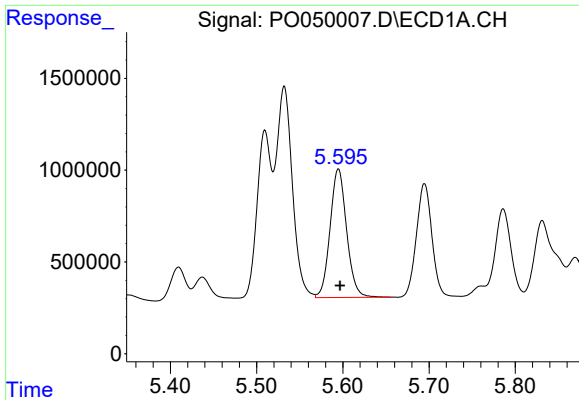
#3 AR-1016-1  
 R.T.: 4.383 min  
 Delta R.T.: 0.000 min  
 Response: 7046851  
 Conc: 997.02 ng/ml



#4 AR-1016-2  
 R.T.: 5.532 min  
 Delta R.T.: -0.002 min  
 Response: 15089888  
 Conc: 1009.29 ng/ml

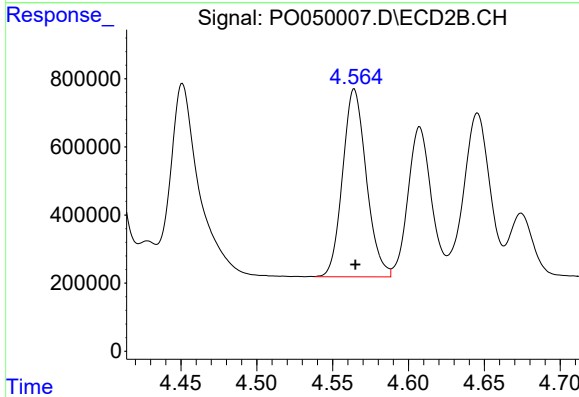


#4 AR-1016-2  
 R.T.: 4.399 min  
 Delta R.T.: 0.000 min  
 Response: 11932699  
 Conc: 977.84 ng/ml

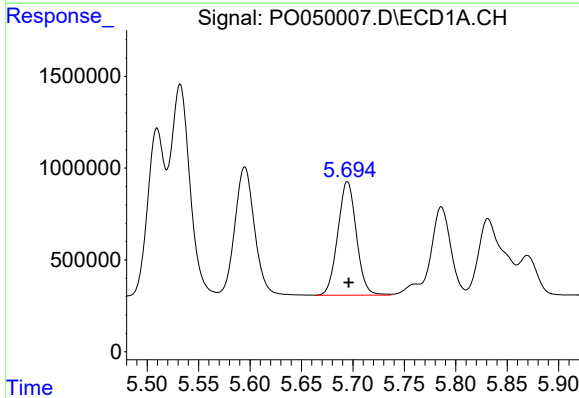


#5 AR-1016-3  
 R.T.: 5.595 min  
 Delta R.T.: -0.002 min  
 Response: 9317073  
 Conc: 1002.75 ng/ml

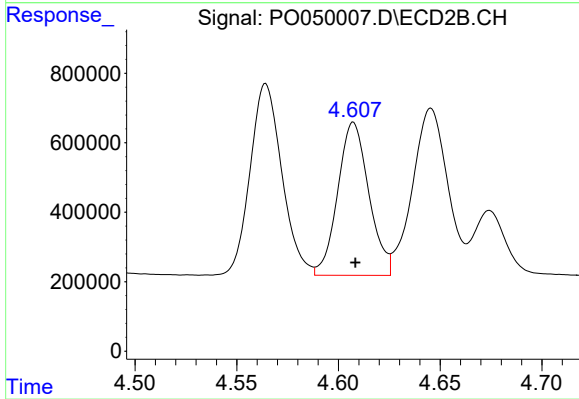
Instrument :  
 ECD\_O  
 ClientSampleId :  
 AR1660ICC1000



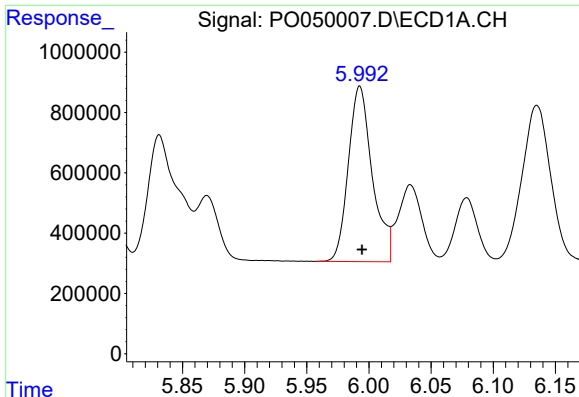
#5 AR-1016-3  
 R.T.: 4.564 min  
 Delta R.T.: 0.000 min  
 Response: 6002155  
 Conc: 999.82 ng/ml



#6 AR-1016-4  
 R.T.: 5.695 min  
 Delta R.T.: -0.001 min  
 Response: 7780117  
 Conc: 1014.14 ng/ml



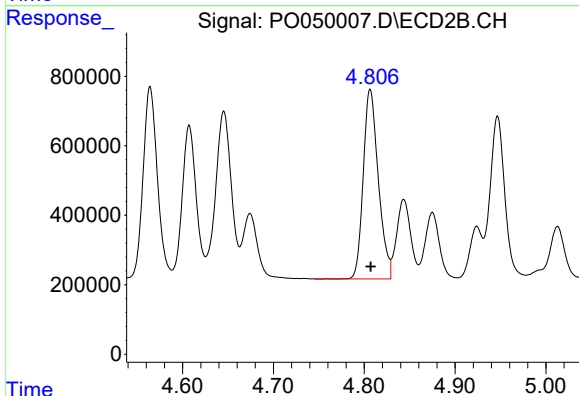
#6 AR-1016-4  
 R.T.: 4.607 min  
 Delta R.T.: 0.000 min  
 Response: 4699898  
 Conc: 980.34 ng/ml



#7 AR-1016-5

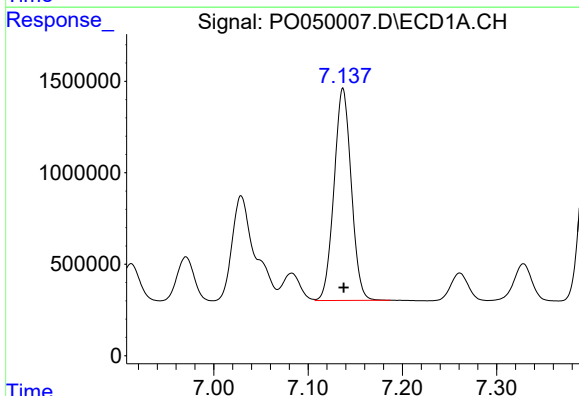
R.T.: 5.993 min  
Delta R.T.: -0.002 min  
Response: 7818943  
Conc: 1002.16 ng/ml

Instrument :  
ECD\_O  
ClientSampleId :  
AR1660ICC1000



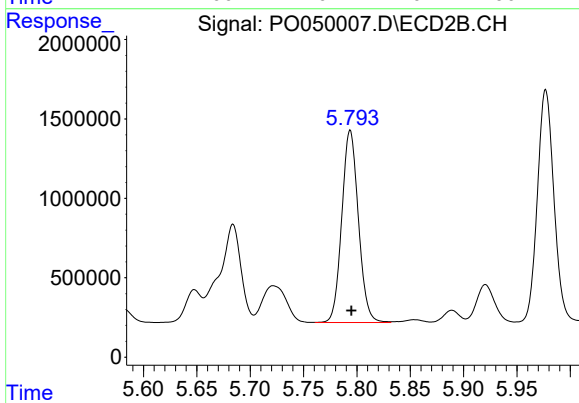
#7 AR-1016-5

R.T.: 4.807 min  
Delta R.T.: 0.000 min  
Response: 6280004  
Conc: 982.43 ng/ml



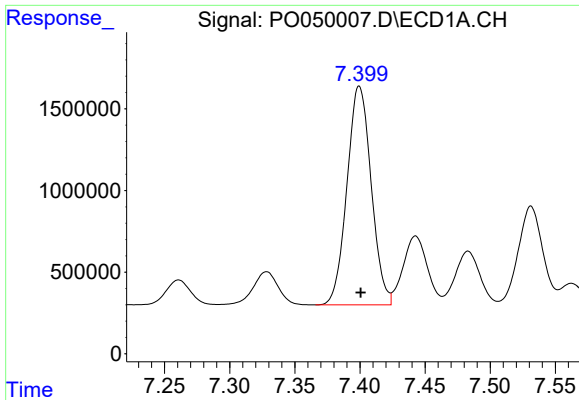
#31 AR-1260-1

R.T.: 7.137 min  
Delta R.T.: 0.000 min  
Response: 14716141  
Conc: 969.52 ng/ml



#31 AR-1260-1

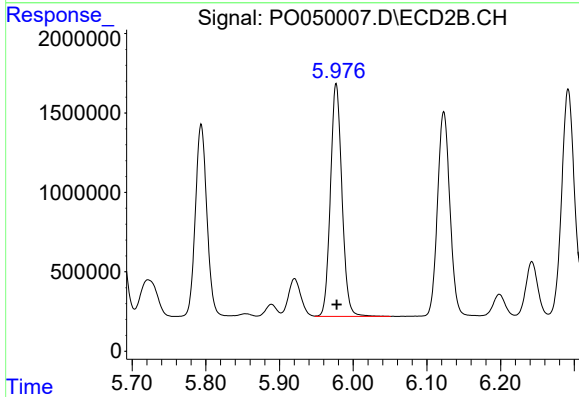
R.T.: 5.794 min  
Delta R.T.: 0.000 min  
Response: 13109991  
Conc: 969.84 ng/ml



#32 AR-1260-2

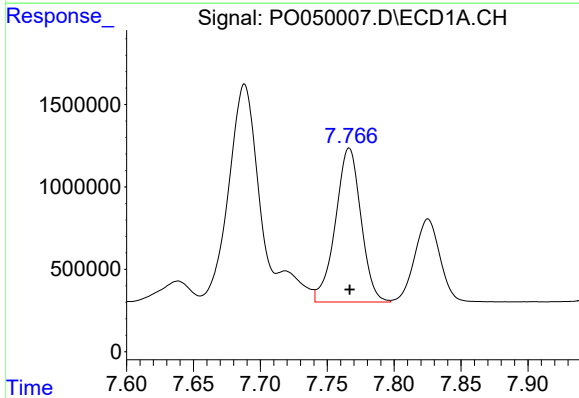
R.T.: 7.399 min  
 Delta R.T.: -0.001 min  
 Response: 17341031  
 Conc: 974.58 ng/ml

Instrument :  
 ECD\_O  
 ClientSampleId :  
 AR1660ICC1000



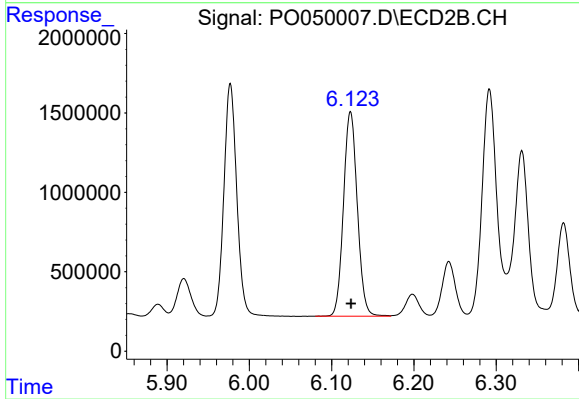
#32 AR-1260-2

R.T.: 5.977 min  
 Delta R.T.: -0.001 min  
 Response: 15894802  
 Conc: 975.28 ng/ml



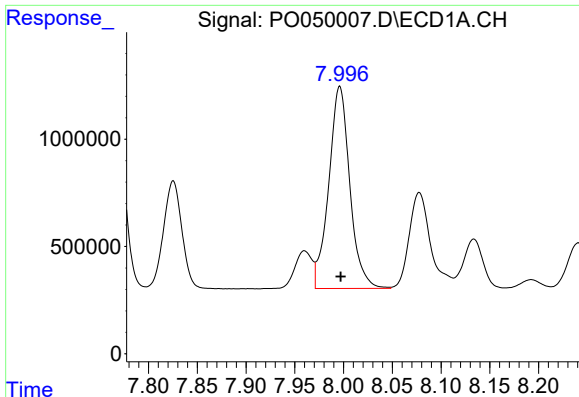
#33 AR-1260-3

R.T.: 7.766 min  
 Delta R.T.: 0.000 min  
 Response: 12434691  
 Conc: 958.88 ng/ml



#33 AR-1260-3

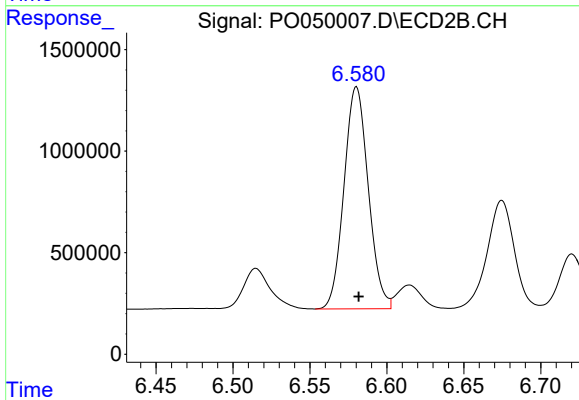
R.T.: 6.123 min  
 Delta R.T.: 0.000 min  
 Response: 15033066  
 Conc: 971.86 ng/ml



#34 AR-1260-4

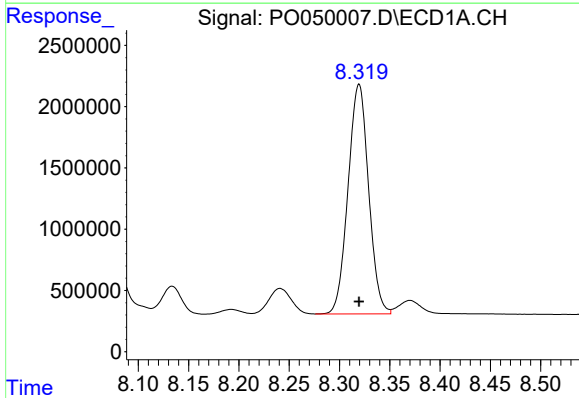
R.T.: 7.996 min  
 Delta R.T.: -0.001 min  
 Response: 14160271  
 Conc: 963.58 ng/ml

Instrument :  
 ECD\_O  
 ClientSampleId :  
 AR1660ICC1000



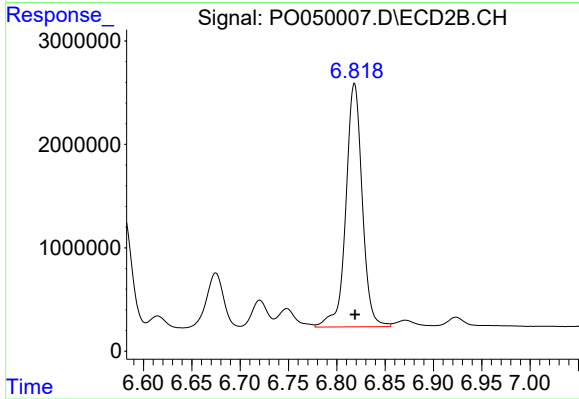
#34 AR-1260-4

R.T.: 6.580 min  
 Delta R.T.: -0.001 min  
 Response: 11972386  
 Conc: 970.23 ng/ml



#35 AR-1260-5

R.T.: 8.319 min  
 Delta R.T.: 0.000 min  
 Response: 26654692  
 Conc: 987.42 ng/ml



#35 AR-1260-5

R.T.: 6.818 min  
 Delta R.T.: 0.000 min  
 Response: 27696506  
 Conc: 989.16 ng/ml