

Data Path : Z:\pestpcbsrv\HPCHEM1\ECD_0\Data\P0101719\
 Data File : P0062081.D
 Signal(s) : Signal #1: ECD1A.CH Signal #2: ECD2B.CH
 Acq On : 17 Oct 2019 11:13
 Operator : HP/AJ
 Sample : PB124004BL
 Misc :
 ALS Vial : 4 Sample Multiplier: 1

Instrument :
 ECD_0
 ClientSampleId :
 PB124004BL

Integration File signal 1: autoint1.e
 Integration File signal 2: autoint2.e
 Quant Time: Oct 17 13:19:30 2019
 Quant Method : Z:\pestpcbsrv\HPCHEM1\ECD_0\methods\P0101119.M
 Quant Title : GC EXTRACTABLES
 QLast Update : Sat Oct 12 06:25:38 2019
 Response via : Initial Calibration
 Integrator: ChemStation 6890 Scale Mode: Small noise peaks clipped

Volume Inj. : 2 µl
 Signal #1 Phase : ZB-MR1 Signal #2 Phase: ZB-MR2
 Signal #1 Info : 30Mx0.32mmx 0.50µ Signal #2 Info : 30M x 0.32mm x 0.25µm

Compound	RT#1	RT#2	Resp#1	Resp#2	ng/ml	ng/ml
----------	------	------	--------	--------	-------	-------

System Monitoring Compounds

1) SA Tetrachlo...	4.328	3.484	1077988	744934	17.430	17.372
2) SA Decachlor...	9.966	8.343	1214273	639435	21.702	21.793

Target Compounds

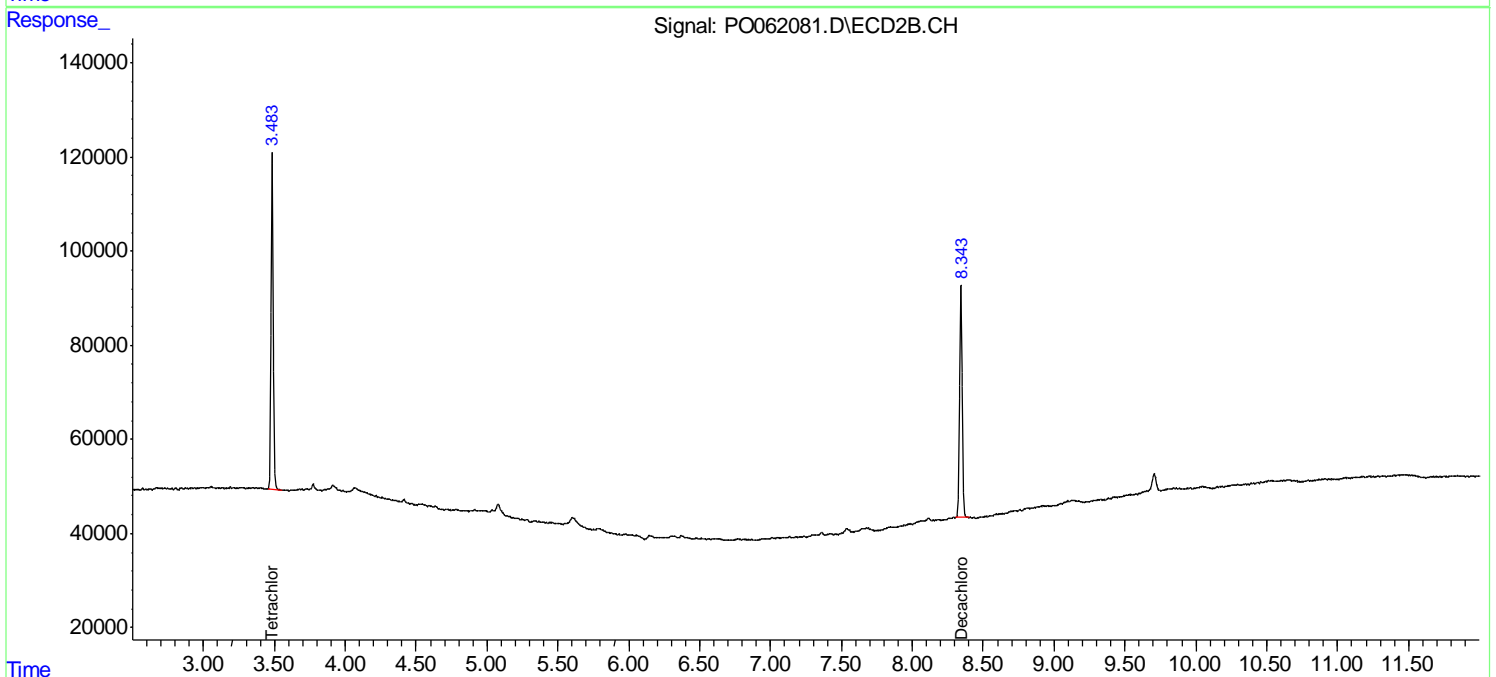
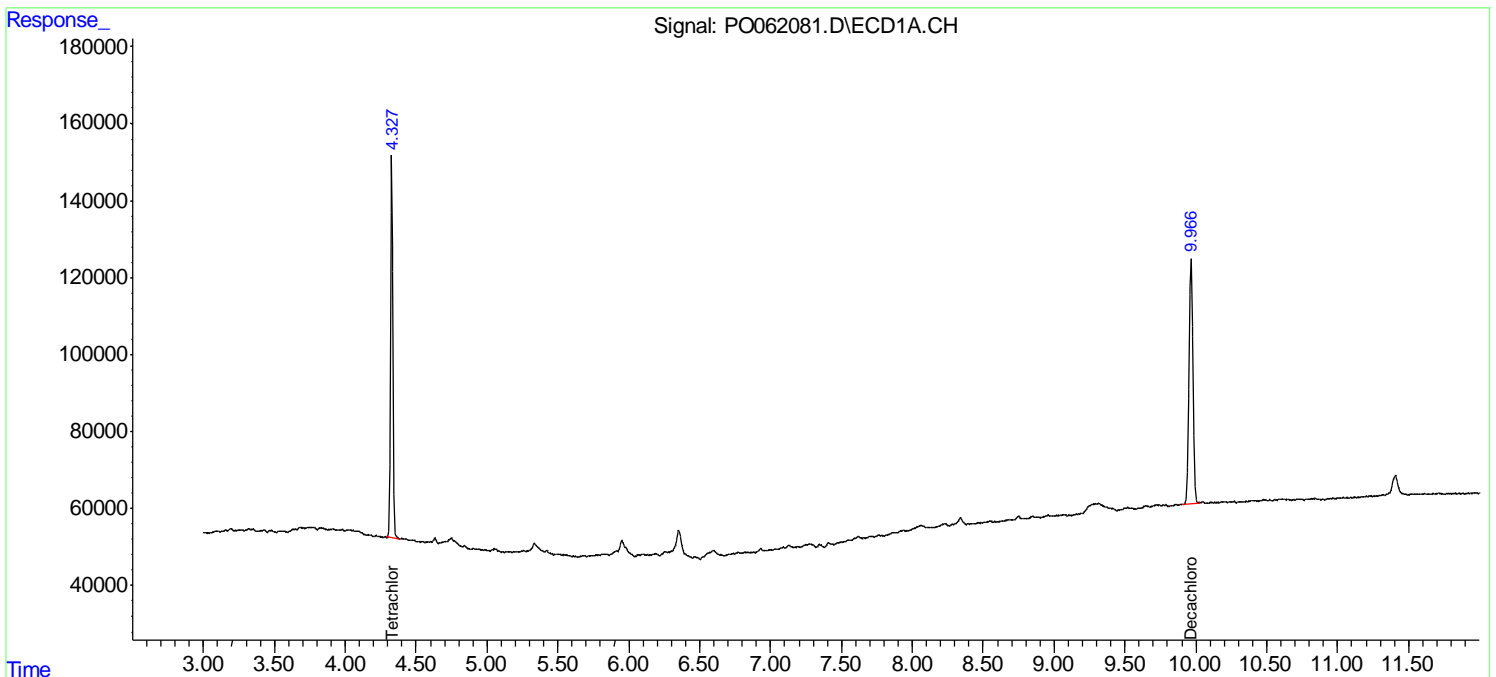
(f)=RT Delta > 1/2 Window (#)=Amounts differ by > 25% (m)=manual int.

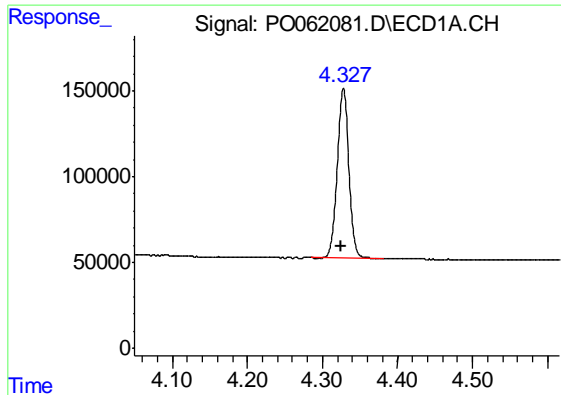
Data Path : Z:\pestpcbsrv\HPCHEM1\ECD_O\Data\PO101719\
 Data File : PO062081.D
 Signal(s) : Signal #1: ECD1A.CH Signal #2: ECD2B.CH
 Acq On : 17 Oct 2019 11:13
 Operator : HP/AJ
 Sample : PB124004BL
 Misc :
 ALS Vial : 4 Sample Multiplier: 1

Instrument :
 ECD_O
 ClientSampleId :
 PB124004BL

Integration File signal 1: autoint1.e
 Integration File signal 2: autoint2.e
 Quant Time: Oct 17 13:19:30 2019
 Quant Method : Z:\pestpcbsrv\HPCHEM1\ECD_O\methods\PO101119.M
 Quant Title : GC EXTRACTABLES
 QLast Update : Sat Oct 12 06:25:38 2019
 Response via : Initial Calibration
 Integrator: ChemStation 6890 Scale Mode: Small noise peaks clipped

Volume Inj. : 2 µl
 Signal #1 Phase : ZB-MR1 Signal #2 Phase: ZB-MR2
 Signal #1 Info : 30Mx0.32mmx 0.50µ Signal #2 Info : 30M x 0.32mm x 0.25µm

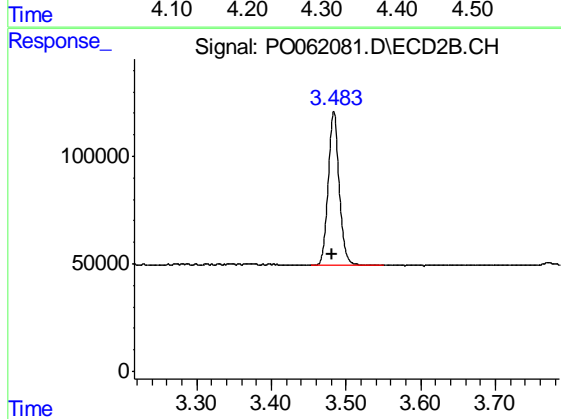




#1 Tetrachloro-m-xylene

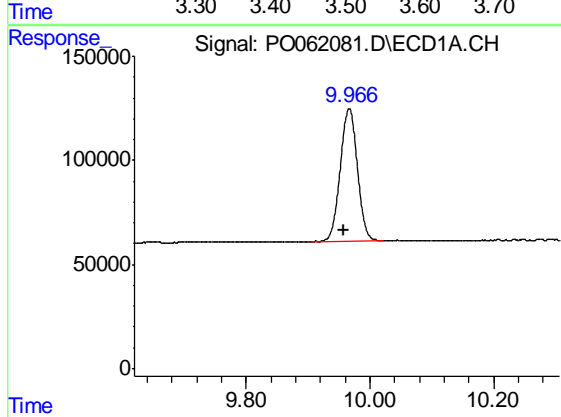
R.T.: 4.328 min
 Delta R.T.: 0.003 min
 Response: 1077988
 Conc: 17.43 ng/ml

Instrument :
 ECD_O
 ClientSampleId :
 PB124004BL



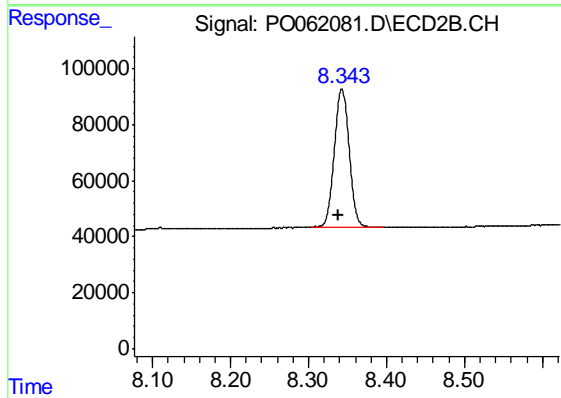
#1 Tetrachloro-m-xylene

R.T.: 3.484 min
 Delta R.T.: 0.002 min
 Response: 744934
 Conc: 17.37 ng/ml



#2 Decachlorobiphenyl

R.T.: 9.966 min
 Delta R.T.: 0.010 min
 Response: 1214273
 Conc: 21.70 ng/ml



#2 Decachlorobiphenyl

R.T.: 8.343 min
 Delta R.T.: 0.005 min
 Response: 639435
 Conc: 21.79 ng/ml