

Data Path : Z:\pestpcbsrv\HPCHEM1\ECD_0\Data\P0102419\
 Data File : P0063110.D
 Signal(s) : Signal #1: ECD1A.CH Signal #2: ECD2B.CH
 Acq On : 24 Oct 2019 10:27
 Operator : HP/AJ
 Sample : AR1660CCC500
 Misc :
 ALS Vial : 3 Sample Multiplier: 1

Instrument :
 ECD_0
 ClientSampleId :
 AR1660CCC500

Integration File signal 1: autoint1.e
 Integration File signal 2: autoint2.e
 Quant Time: Oct 25 06:02:27 2019
 Quant Method : Z:\pestpcbsrv\HPCHEM1\ECD_0\methods\P0101119.M
 Quant Title : GC EXTRACTABLES
 QLast Update : Sat Oct 12 06:25:38 2019
 Response via : Initial Calibration
 Integrator: ChemStation 6890 Scale Mode: Small noise peaks clipped

Volume Inj. : 2 µl
 Signal #1 Phase : ZB-MR1 Signal #2 Phase: ZB-MR2
 Signal #1 Info : 30Mx0.32mmx 0.50µ Signal #2 Info : 30M x 0.32mm x 0.25µm

Compound	RT#1	RT#2	Resp#1	Resp#2	ng/ml	ng/ml

System Monitoring Compounds						
1) SA Tetrachlo...	4.328	3.486	2881083	1941682	46.584	45.280
2) SA Decachlor...	9.954	8.335	2731007	1439947	48.809	49.076
Target Compounds						
3) L1 AR-1016-1	5.488	4.531	1089358	709207	460.286	453.415
4) L1 AR-1016-2	5.511	4.548	1564646	1068356	459.351	459.328
5) L1 AR-1016-3	5.572	4.717	934780	566377	451.711	458.211
6) L1 AR-1016-4	5.670	4.760	786345	442473	463.946	450.263
7) L1 AR-1016-5	5.961	4.965	812066	575578	456.650	446.338
31) L7 AR-1260-1	7.079	5.970	1457451	1012177	511.903	476.378
32) L7 AR-1260-2	7.335	6.156	1846754	1238919	538.325	488.220
33) L7 AR-1260-3	7.692	6.304	1418845	1083813	536.199	479.966
34) L7 AR-1260-4	7.916	6.766	1409686	828136	503.991	471.644
35) L7 AR-1260-5	8.228	7.007	2809323	1875327	536.581	520.571

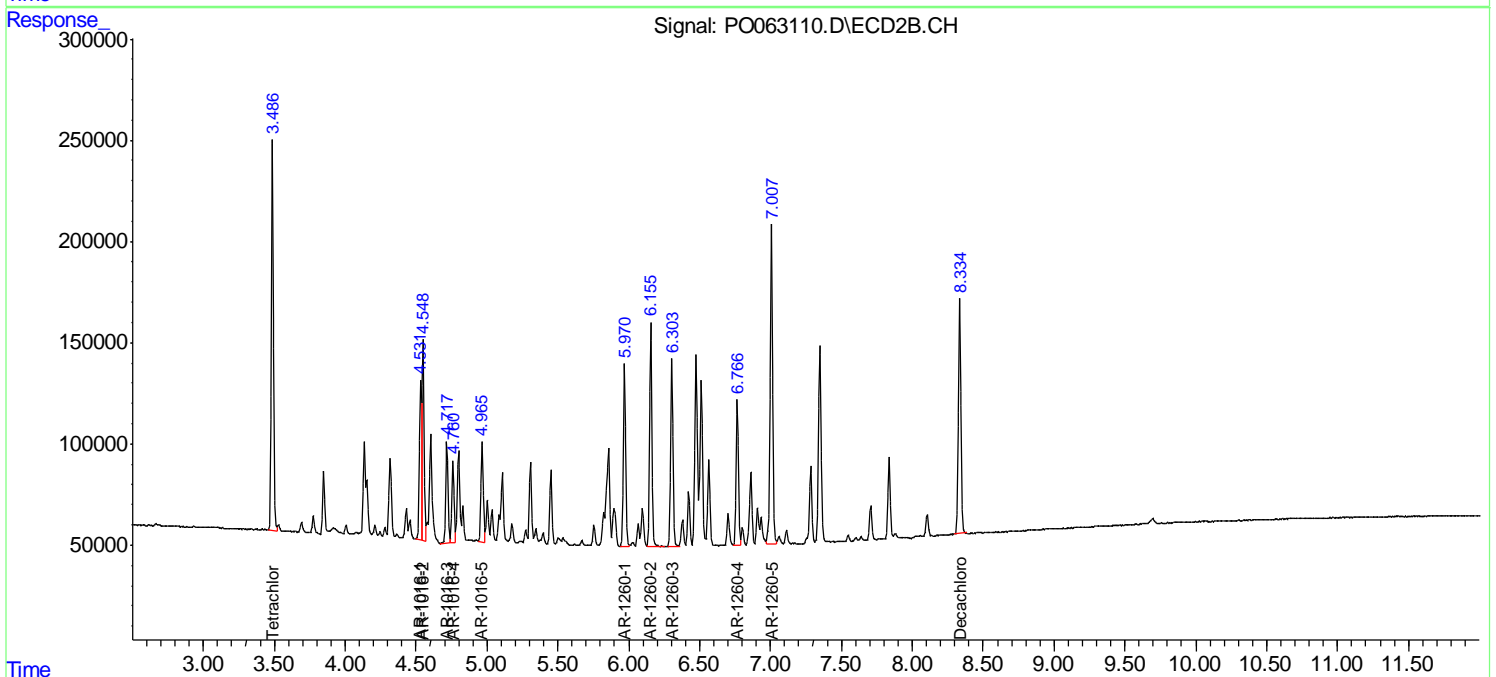
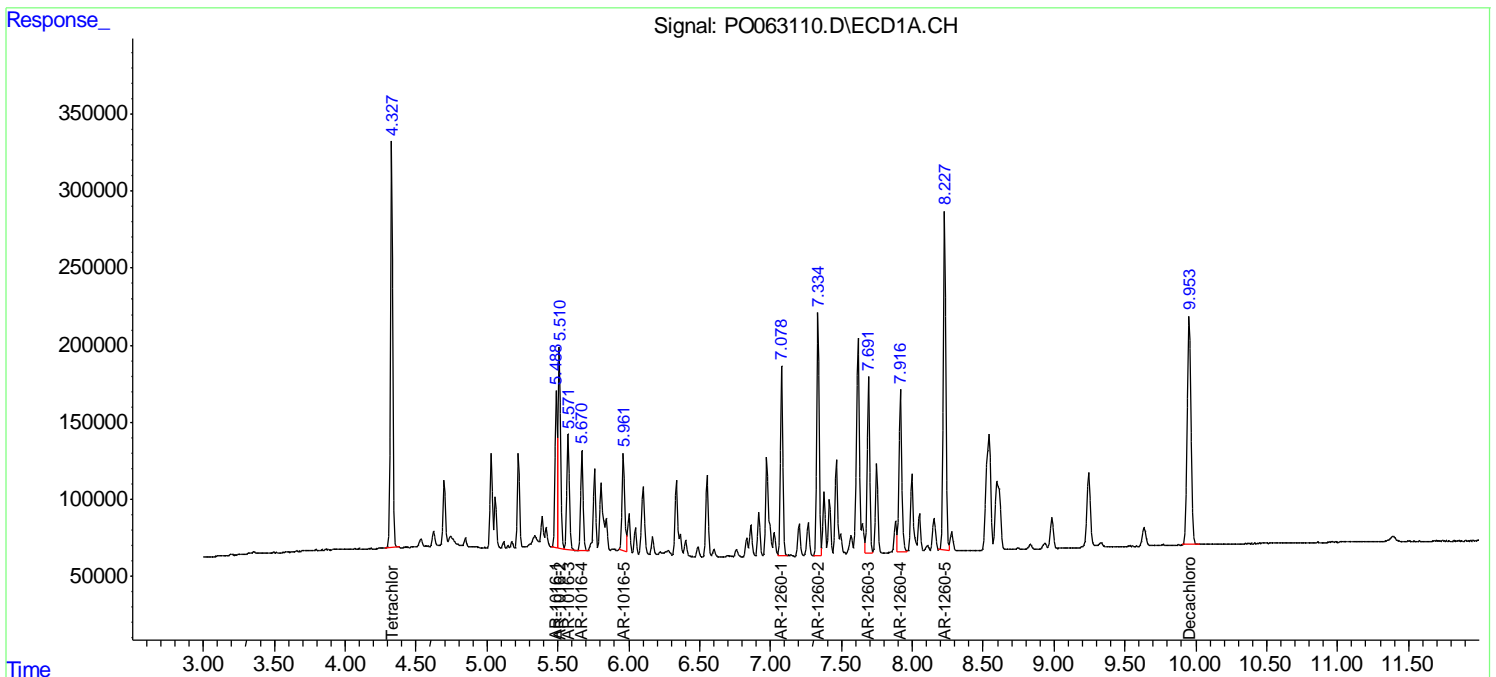
(f)=RT Delta > 1/2 Window (#)=Amounts differ by > 25% (m)=manual int.

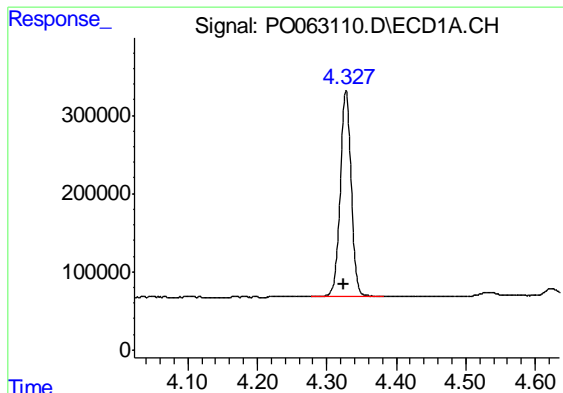
Data Path : Z:\pestpcbsrv\HPCHEM1\ECD_O\Data\PO102419\
 Data File : PO063110.D
 Signal(s) : Signal #1: ECD1A.CH Signal #2: ECD2B.CH
 Acq On : 24 Oct 2019 10:27
 Operator : HP/AJ
 Sample : AR1660CCC500
 Misc :
 ALS Vial : 3 Sample Multiplier: 1

Instrument :
 ECD_O
 ClientSampled :
 AR1660CCC500

Integration File signal 1: autoint1.e
 Integration File signal 2: autoint2.e
 Quant Time: Oct 25 06:02:27 2019
 Quant Method : Z:\pestpcbsrv\HPCHEM1\ECD_O\methods\PO101119.M
 Quant Title : GC EXTRACTABLES
 QLast Update : Sat Oct 12 06:25:38 2019
 Response via : Initial Calibration
 Integrator: ChemStation 6890 Scale Mode: Small noise peaks clipped

Volume Inj. : 2 µl
 Signal #1 Phase : ZB-MR1 Signal #2 Phase: ZB-MR2
 Signal #1 Info : 30Mx0.32mmx 0.50µ Signal #2 Info : 30M x 0.32mm x 0.25µm

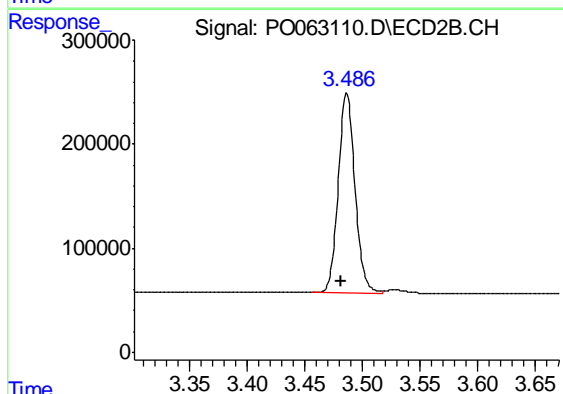




#1 Tetrachloro-m-xylene

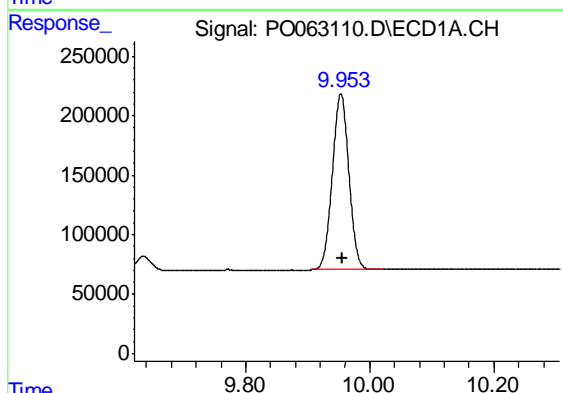
R.T.: 4.328 min
 Delta R.T.: 0.003 min
 Response: 2881083
 Conc: 46.58 ng/ml

Instrument :
 ECD_O
 ClientSampleId :
 AR1660CCC500



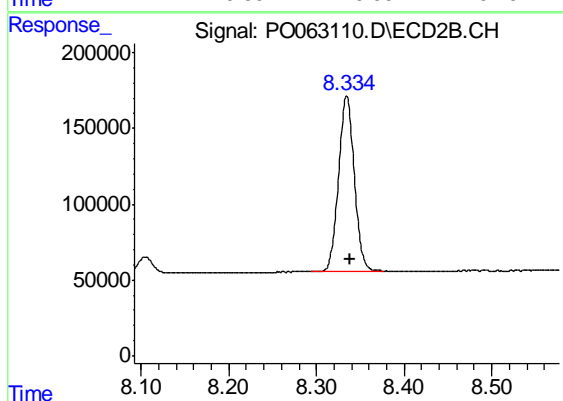
#1 Tetrachloro-m-xylene

R.T.: 3.486 min
 Delta R.T.: 0.005 min
 Response: 1941682
 Conc: 45.28 ng/ml



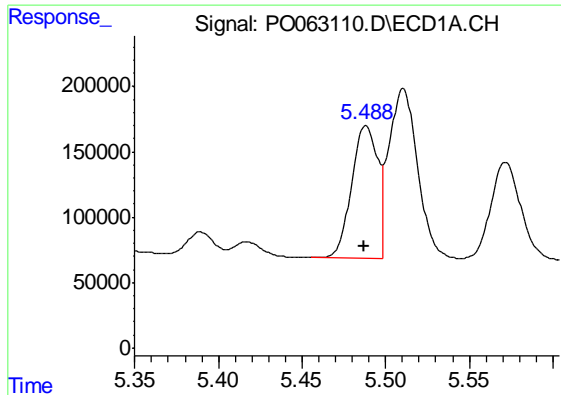
#2 Decachlorobiphenyl

R.T.: 9.954 min
 Delta R.T.: -0.003 min
 Response: 2731007
 Conc: 48.81 ng/ml



#2 Decachlorobiphenyl

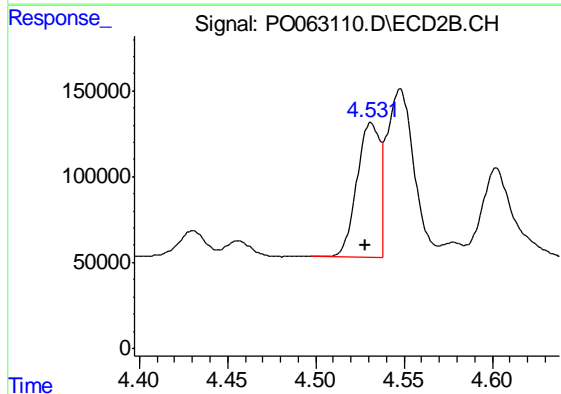
R.T.: 8.335 min
 Delta R.T.: -0.003 min
 Response: 1439947
 Conc: 49.08 ng/ml



#3 AR-1016-1

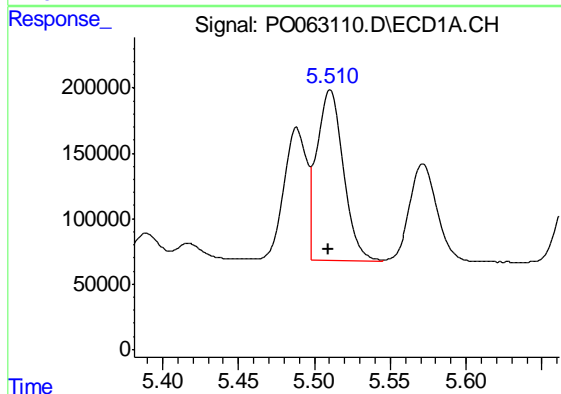
R.T.: 5.488 min
 Delta R.T.: 0.001 min
 Response: 1089358
 Conc: 460.29 ng/ml

Instrument :
 ECD_O
 ClientSampleId :
 AR1660CCC500



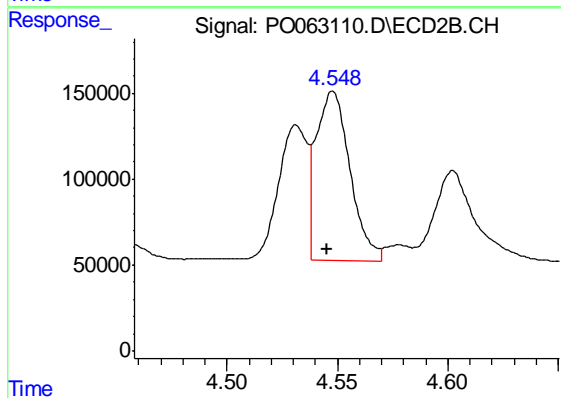
#3 AR-1016-1

R.T.: 4.531 min
 Delta R.T.: 0.004 min
 Response: 709207
 Conc: 453.41 ng/ml



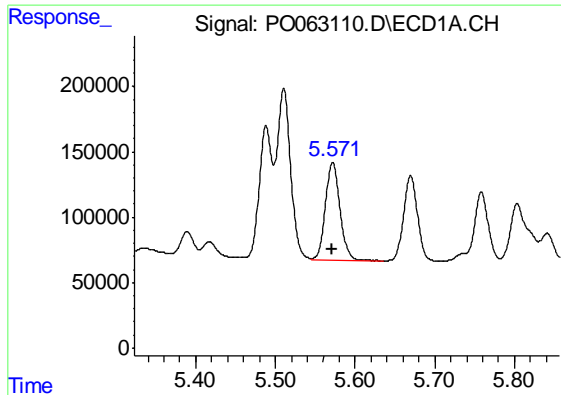
#4 AR-1016-2

R.T.: 5.511 min
 Delta R.T.: 0.001 min
 Response: 1564646
 Conc: 459.35 ng/ml



#4 AR-1016-2

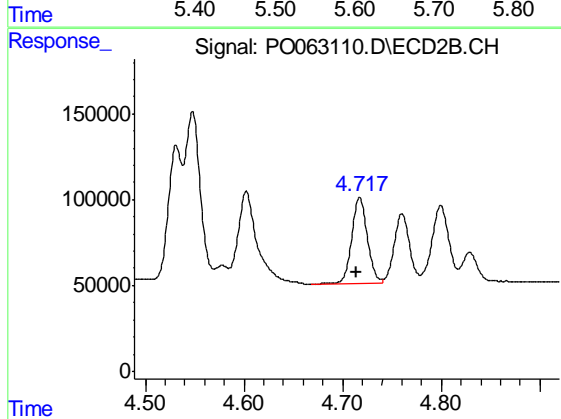
R.T.: 4.548 min
 Delta R.T.: 0.003 min
 Response: 1068356
 Conc: 459.33 ng/ml



#5 AR-1016-3

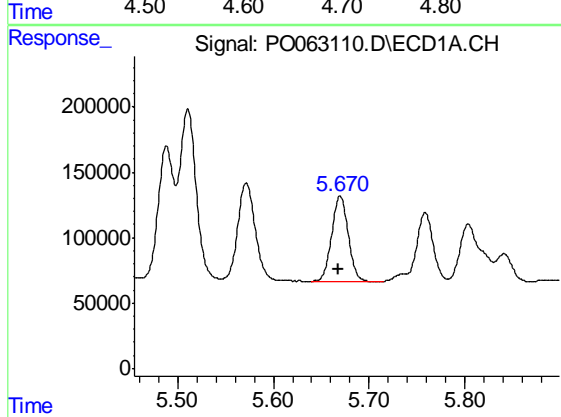
R.T.: 5.572 min
Delta R.T.: 0.000 min
Response: 934780
Conc: 451.71 ng/ml

Instrument :
ECD_O
ClientSampleId :
AR1660CCC500



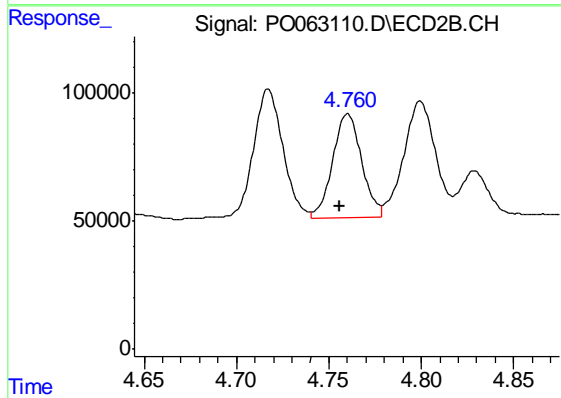
#5 AR-1016-3

R.T.: 4.717 min
Delta R.T.: 0.003 min
Response: 566377
Conc: 458.21 ng/ml



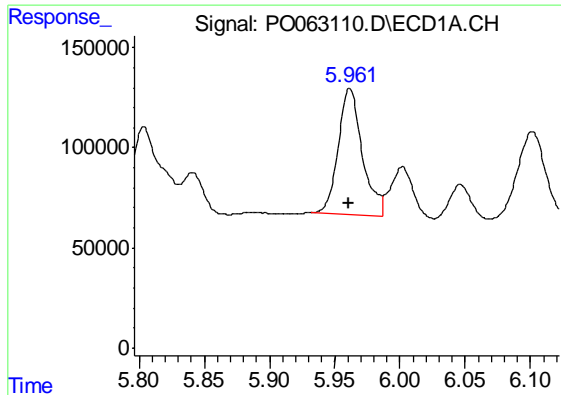
#6 AR-1016-4

R.T.: 5.670 min
Delta R.T.: 0.002 min
Response: 786345
Conc: 463.95 ng/ml



#6 AR-1016-4

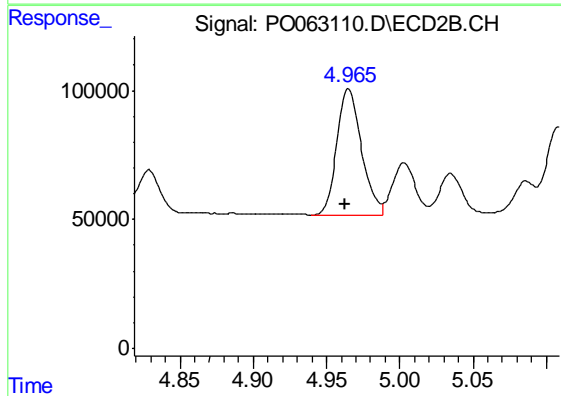
R.T.: 4.760 min
Delta R.T.: 0.004 min
Response: 442473
Conc: 450.26 ng/ml



#7 AR-1016-5

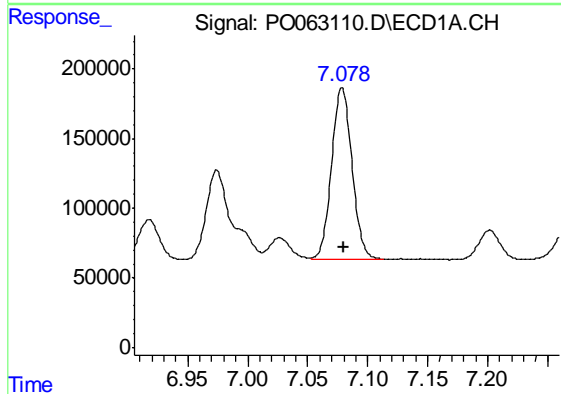
R.T.: 5.961 min
Delta R.T.: 0.000 min
Response: 812066
Conc: 456.65 ng/ml

Instrument :
ECD_O
ClientSampleId :
AR1660CCC500



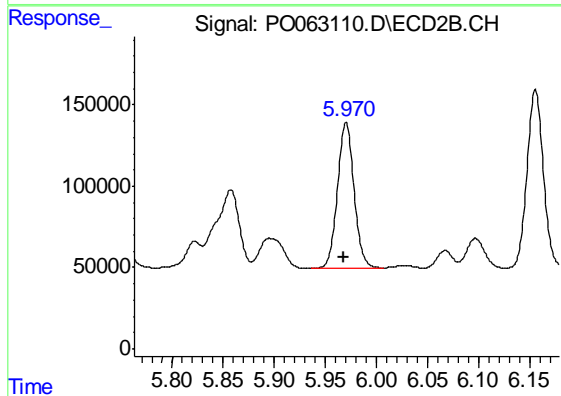
#7 AR-1016-5

R.T.: 4.965 min
Delta R.T.: 0.002 min
Response: 575578
Conc: 446.34 ng/ml



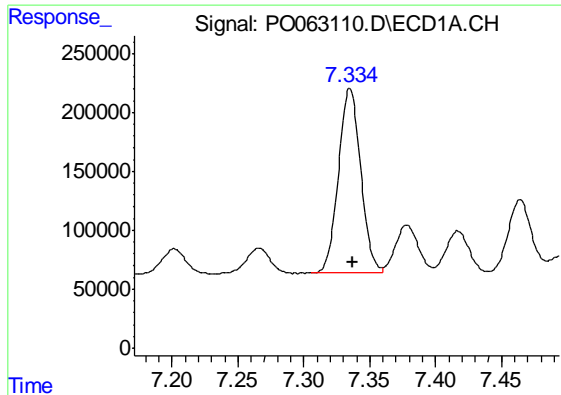
#31 AR-1260-1

R.T.: 7.079 min
Delta R.T.: -0.001 min
Response: 1457451
Conc: 511.90 ng/ml



#31 AR-1260-1

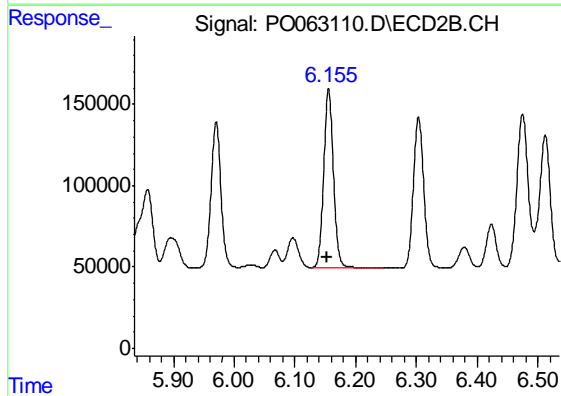
R.T.: 5.970 min
Delta R.T.: 0.002 min
Response: 1012177
Conc: 476.38 ng/ml



#32 AR-1260-2

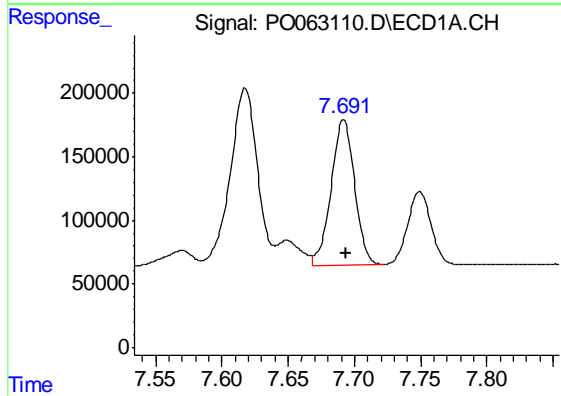
R.T.: 7.335 min
Delta R.T.: -0.002 min
Response: 1846754
Conc: 538.33 ng/ml

Instrument :
ECD_O
ClientSampleId :
AR1660CCC500



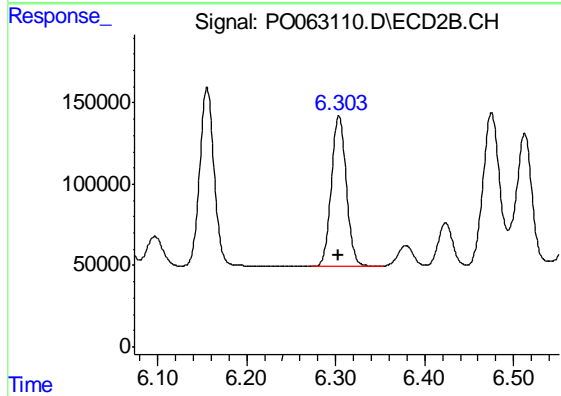
#32 AR-1260-2

R.T.: 6.156 min
Delta R.T.: 0.002 min
Response: 1238919
Conc: 488.22 ng/ml



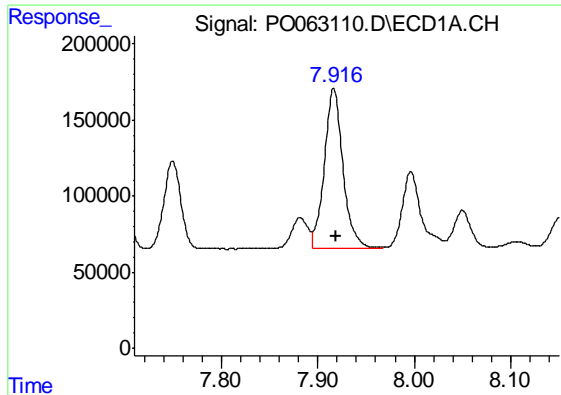
#33 AR-1260-3

R.T.: 7.692 min
Delta R.T.: -0.002 min
Response: 1418845
Conc: 536.20 ng/ml



#33 AR-1260-3

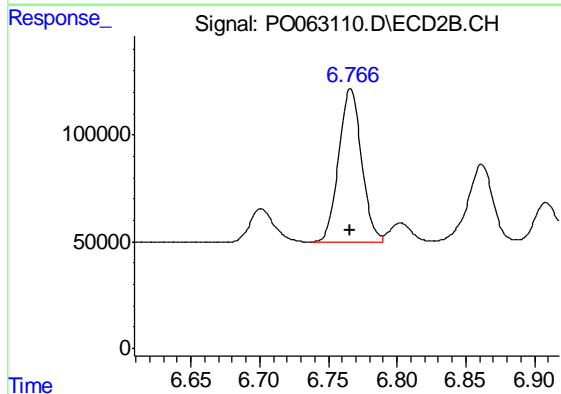
R.T.: 6.304 min
Delta R.T.: 0.000 min
Response: 1083813
Conc: 479.97 ng/ml



#34 AR-1260-4

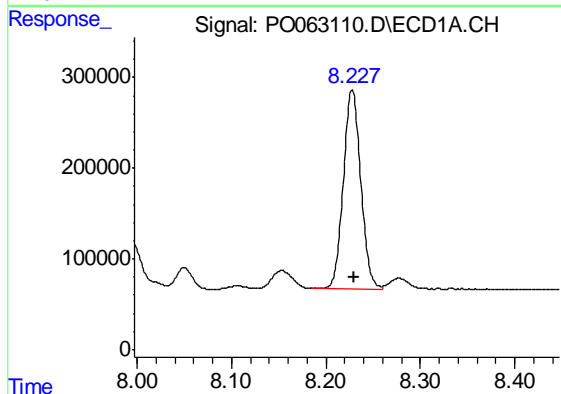
R.T.: 7.916 min
 Delta R.T.: -0.002 min
 Response: 1409686
 Conc: 503.99 ng/ml

Instrument :
 ECD_O
 ClientSampleId :
 AR1660CCC500



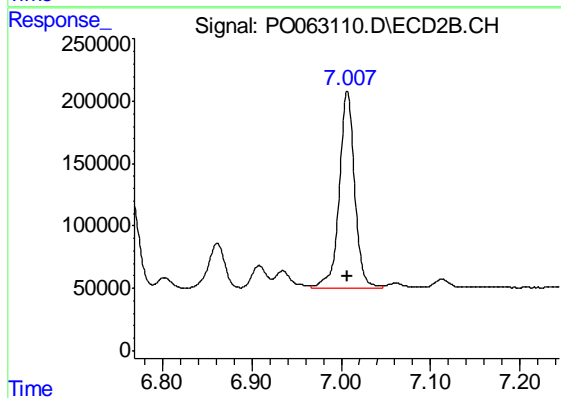
#34 AR-1260-4

R.T.: 6.766 min
 Delta R.T.: 0.000 min
 Response: 828136
 Conc: 471.64 ng/ml



#35 AR-1260-5

R.T.: 8.228 min
 Delta R.T.: -0.002 min
 Response: 2809323
 Conc: 536.58 ng/ml



#35 AR-1260-5

R.T.: 7.007 min
 Delta R.T.: 0.000 min
 Response: 1875327
 Conc: 520.57 ng/ml