

Data Path : Z:\pestpcbsrv\HPCHEM1\ECD_0\Data\PO102519\
 Data File : PO063195.D
 Signal(s) : Signal #1: ECD1A.CH Signal #2: ECD2B.CH
 Acq On : 26 Oct 2019 2:23
 Operator : HP/AJ
 Sample : K5503-11
 Misc :
 ALS Vial : 43 Sample Multiplier: 1

Instrument :
 ECD_0
 ClientSampled :
 173-38-(0-2)

Integration File signal 1: autoint1.e
 Integration File signal 2: autoint2.e
 Quant Time: Oct 26 05:35:42 2019
 Quant Method : Z:\pestpcbsrv\HPCHEM1\ECD_0\methods\PO101119.M
 Quant Title : GC EXTRACTABLES
 QLast Update : Sat Oct 12 06:25:38 2019
 Response via : Initial Calibration
 Integrator: ChemStation 6890 Scale Mode: Small noise peaks clipped

Volume Inj. : 2 µl
 Signal #1 Phase : ZB-MR1 Signal #2 Phase: ZB-MR2
 Signal #1 Info : 30Mx0.32mmx 0.50µ Signal #2 Info : 30M x 0.32mm x 0.25µm

Compound	RT#1	RT#2	Resp#1	Resp#2	ng/ml	ng/ml
System Monitoring Compounds						
1) SA Tetrachlo...	4.317	3.480	1006928	873970	16.281	20.381 #
2) SA Decachlor...	9.935	8.323	1719337	1009672	30.728	34.411
Target Compounds						
3) L1 AR-1016-1	5.477	4.509	51604	62597	21.804	40.020 #
4) L1 AR-1016-2	5.477	4.509	51604	62597	15.150	26.913 #
5) L1 AR-1016-3	0.000	4.723	0	50400	N.D.	40.775 #
6) L1 AR-1016-4	5.696	4.723	64833	50400	38.252	51.288 #
7) L1 AR-1016-5	5.947	4.965	46845	27398	26.342	21.246
10) L2 AR-1221-3	0.000	3.894	0	86872	N.D.	73.821 #
11) L3 AR-1232-1	0.000	3.894	0	86872	N.D.	56.064 #
12) L3 AR-1232-2	0.000	4.509	0	62597	N.D.	36.258 #
13) L3 AR-1232-3	5.477	4.723	51604	50400	20.172	55.141 #
14) L3 AR-1232-4	5.696	0.000	64833	0	50.435	N.D. #
15) L3 AR-1232-5	5.696	4.965	64833	27398	65.506	31.022 #
16) L4 AR-1242-1	5.477	4.509	51604	62597	27.849	52.049 #
17) L4 AR-1242-2	5.477	4.509	51604	62597	19.453	35.142 #
18) L4 AR-1242-3	0.000	4.723	0	50400	N.D.	52.940 #
19) L4 AR-1242-4	5.696	0.000	64833	0	48.026	N.D. #
20) L4 AR-1242-5	0.000	5.297	0	52334	N.D.	43.858 #
21) L5 AR-1248-1	5.477	4.509	51604	62597	36.005	63.761 #
22) L5 AR-1248-2	5.696	4.723	64833	50400	32.382	39.782
23) L5 AR-1248-3	5.947	0.000	46845	0	21.210	N.D. #
24) L5 AR-1248-4	6.322	4.965	39239	27398	15.360	17.314
25) L5 AR-1248-5	0.000	5.297	0	52334	N.D.	34.005 #
26) L6 AR-1254-1	6.322	5.297	39239	52334	14.720	21.398 #
27) L6 AR-1254-2	6.541	5.491	119092	366888	29.129	173.235 #
28) L6 AR-1254-3	6.906	5.832	179230	272060	42.836	83.501 #
29) L6 AR-1254-4	0.000	6.056	0	37926	N.D.	19.636 #
30) L6 AR-1254-5	7.604	6.464	210862	177803	67.284	67.319
31) L7 AR-1260-1	7.065	5.959	217643	171869	76.443	80.890
32) L7 AR-1260-2	7.318	6.145	147431	167904	42.976	66.166 #
33) L7 AR-1260-3	7.678	6.292	130228	89685	49.215	39.717
34) L7 AR-1260-4	7.903	6.753	119750	97274	42.813	55.400 #
35) L7 AR-1260-5	8.214	6.995	197837	189188	37.787	52.517 #
36) L8 AR-1262-1	7.678	6.555	130228	67214	31.725	56.399 #
37) L8 AR-1262-2	8.214	6.995	197837	189188	30.682	45.026 #
38) L8 AR-1262-3	8.512	7.273	261122	146408	59.381	83.243 #
39) L8 AR-1262-4	8.601	7.336	156665	185805	45.345	60.778 #
40) L8 AR-1262-5	9.228	7.826	91972	55573	40.719	42.551
41) L9 AR-1268-1	8.512	7.273	261122	146408	34.494	31.264
42) L9 AR-1268-2	8.601	7.336	156665	185805	22.302	44.475 #
43) L9 AR-1268-3	8.817	7.537	406554	274817	67.822	78.871

Data Path : Z:\pestpcbsrv\HPCHEM1\ECD_0\Data\PO102519\
 Data File : PO063195.D
 Signal(s) : Signal #1: ECD1A.CH Signal #2: ECD2B.CH
 Acq On : 26 Oct 2019 2:23
 Operator : HP/AJ
 Sample : K5503-11
 Misc :
 ALS Vial : 43 Sample Multiplier: 1

Instrument :
 ECD_0
 ClientSampleId :
 173-38-(0-2)

Integration File signal 1: autoint1.e
 Integration File signal 2: autoint2.e
 Quant Time: Oct 26 05:35:42 2019
 Quant Method : Z:\pestpcbsrv\HPCHEM1\ECD_0\methods\PO101119.M
 Quant Title : GC EXTRACTABLES
 QLast Update : Sat Oct 12 06:25:38 2019
 Response via : Initial Calibration
 Integrator: ChemStation 6890 Scale Mode: Small noise peaks clipped

Volume Inj. : 2 µl
 Signal #1 Phase : ZB-MR1 Signal #2 Phase: ZB-MR2
 Signal #1 Info : 30Mx0.32mmx 0.50µ Signal #2 Info : 30M x 0.32mm x 0.25µm

	Compound	RT#1	RT#2	Resp#1	Resp#2	ng/ml	ng/ml
44)	L9 AR-1268-4	9.228	7.826	91972	55573	38.709	39.002
45)	L9 AR-1268-5	9.619	8.095	1031508	578858	57.231	62.527

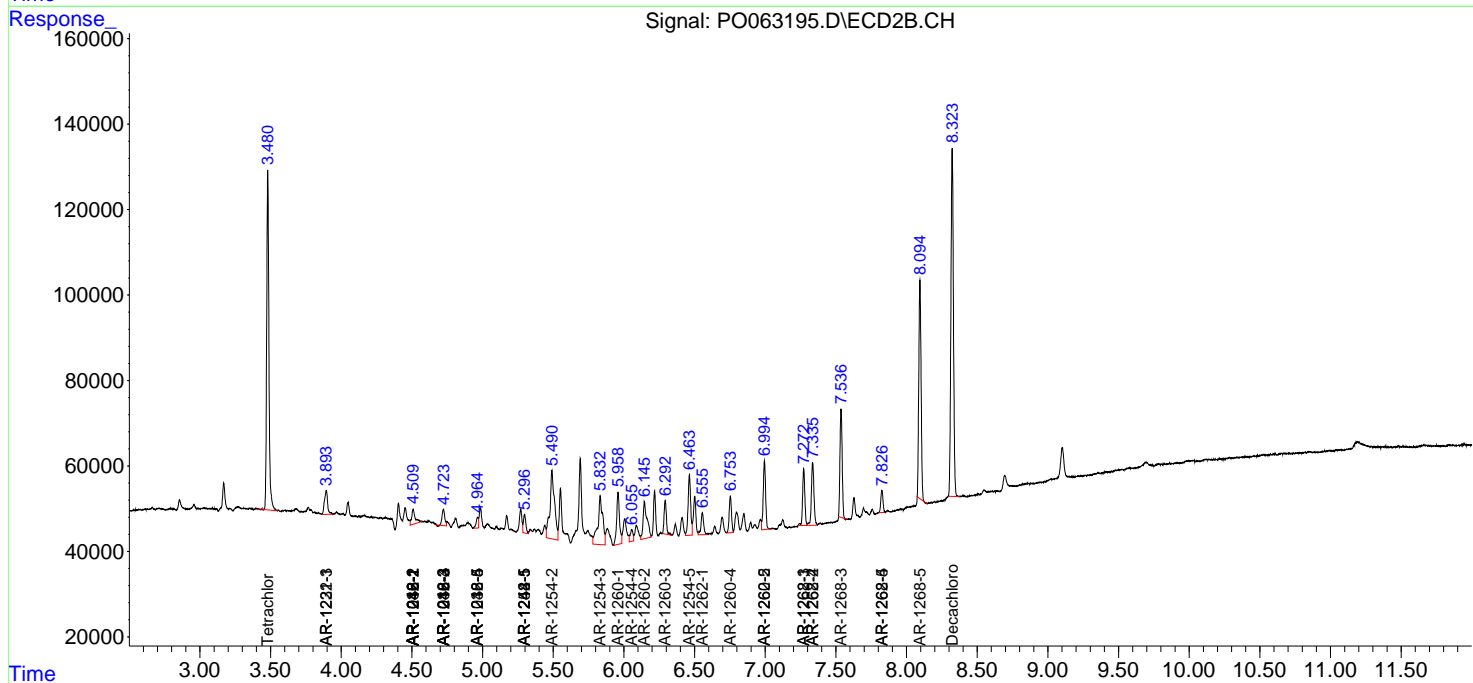
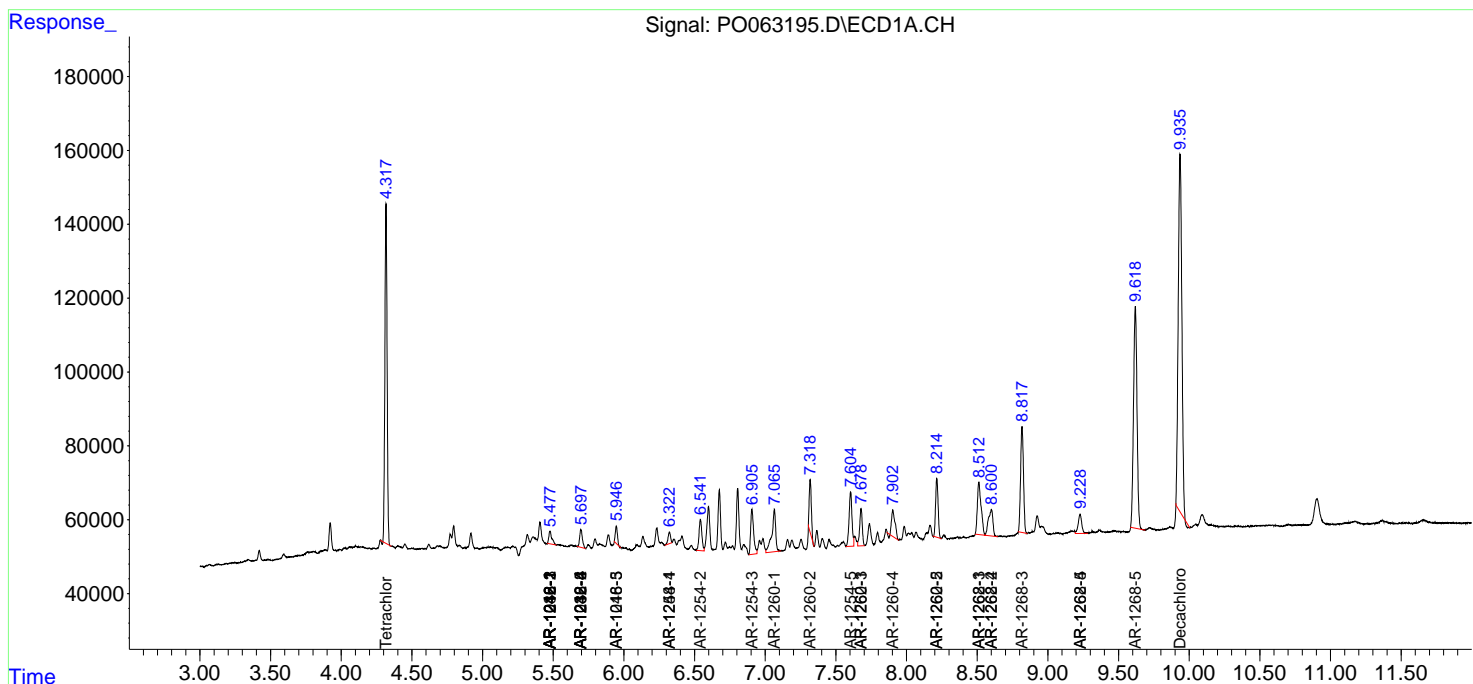
(f)=RT Delta > 1/2 Window (#)=Amounts differ by > 25% (m)=manual int.

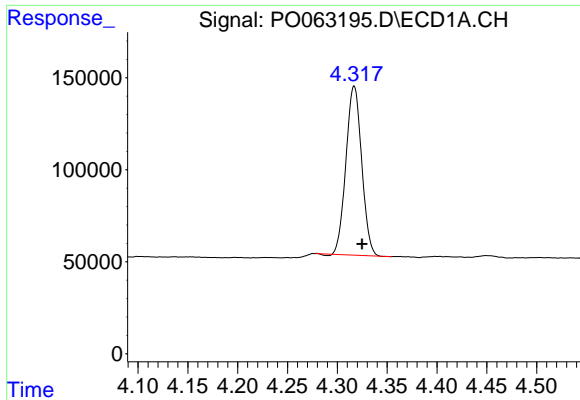
Data Path : Z:\pestpcbsrv\HPCHEM1\ECD_0\Data\PO102519\
 Data File : P0063195.D
 Signal(s) : Signal #1: ECD1A.CH Signal #2: ECD2B.CH
 Acq On : 26 Oct 2019 2:23
 Operator : HP/AJ
 Sample : K5503-11
 Misc :
 ALS Vial : 43 Sample Multiplier: 1

Instrument :
 ECD_O
 ClientSampled :
 173-38-(0-2)

Integration File signal 1: autoint1.e
 Integration File signal 2: autoint2.e
 Quant Time: Oct 26 05:35:42 2019
 Quant Method : Z:\pestpcbsrv\HPCHEM1\ECD_0\methods\PO101119.M
 Quant Title : GC EXTRACTABLES
 QLast Update : Sat Oct 12 06:25:38 2019
 Response via : Initial Calibration
 Integrator: ChemStation 6890 Scale Mode: Small noise peaks clipped

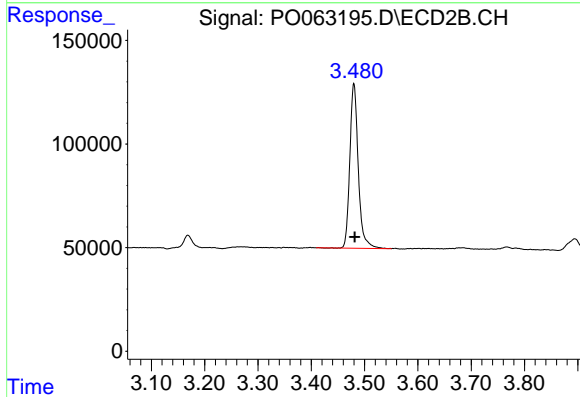
Volume Inj. : 2 µl
 Signal #1 Phase : ZB-MR1 Signal #2 Phase: ZB-MR2
 Signal #1 Info : 30Mx0.32mmx 0.50µ Signal #2 Info : 30M x 0.32mm x 0.25µm



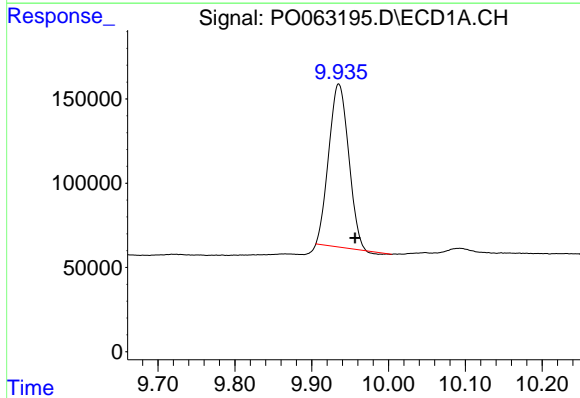


#1 Tetrachloro-m-xylene
 R.T.: 4.317 min
 Delta R.T.: -0.008 min
 Response: 1006928
 Conc: 16.28 ng/ml

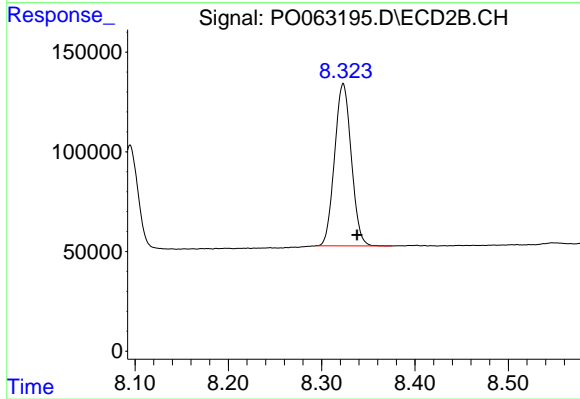
Instrument :
 ECD_O
 ClientSampleId :
 173-38-(0-2)



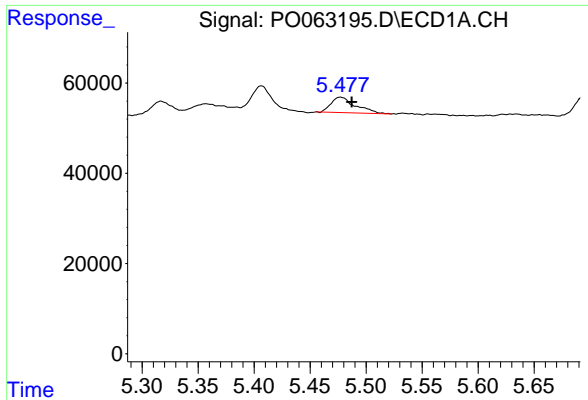
#1 Tetrachloro-m-xylene
 R.T.: 3.480 min
 Delta R.T.: -0.001 min
 Response: 873970
 Conc: 20.38 ng/ml



#2 Decachlorobiphenyl
 R.T.: 9.935 min
 Delta R.T.: -0.021 min
 Response: 1719337
 Conc: 30.73 ng/ml



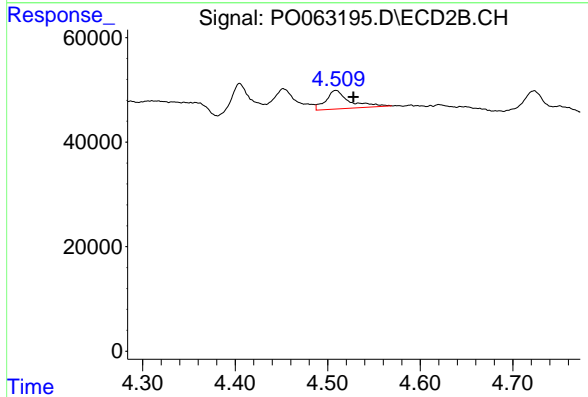
#2 Decachlorobiphenyl
 R.T.: 8.323 min
 Delta R.T.: -0.015 min
 Response: 1009672
 Conc: 34.41 ng/ml



#3 AR-1016-1

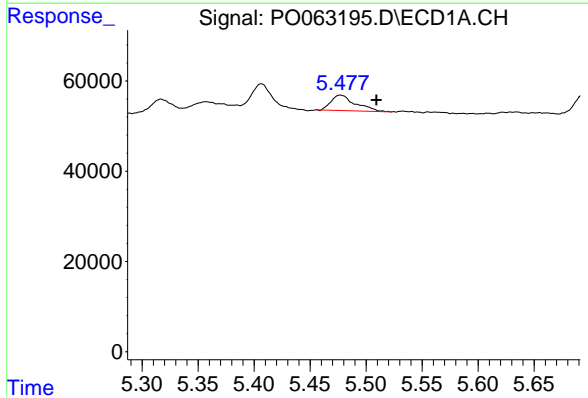
R.T.: 5.477 min
 Delta R.T.: -0.010 min
 Response: 51604
 Conc: 21.80 ng/ml

Instrument :
 ECD_O
 ClientSampled :
 173-38-(0-2)



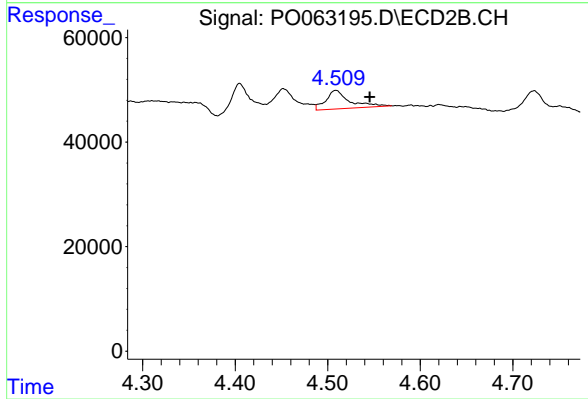
#3 AR-1016-1

R.T.: 4.509 min
 Delta R.T.: -0.019 min
 Response: 62597
 Conc: 40.02 ng/ml



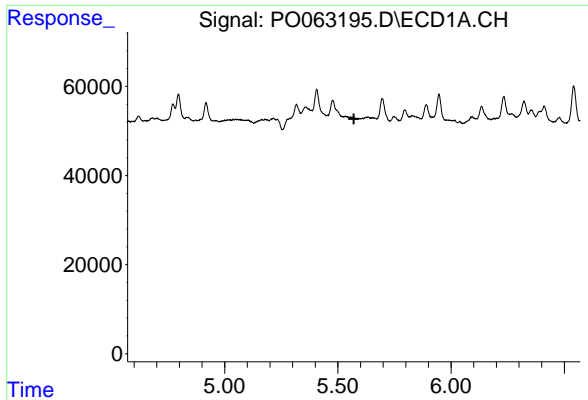
#4 AR-1016-2

R.T.: 5.477 min
 Delta R.T.: -0.032 min
 Response: 51604
 Conc: 15.15 ng/ml



#4 AR-1016-2

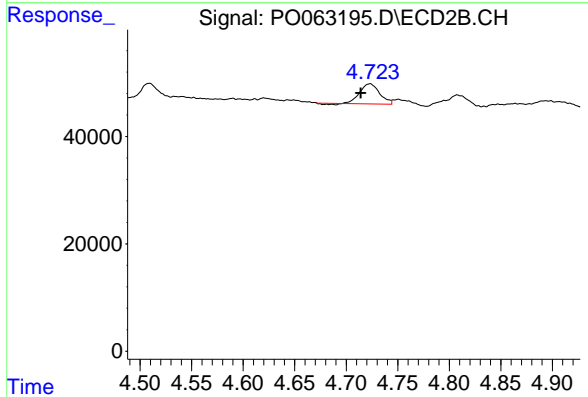
R.T.: 4.509 min
 Delta R.T.: -0.036 min
 Response: 62597
 Conc: 26.91 ng/ml



#5 AR-1016-3

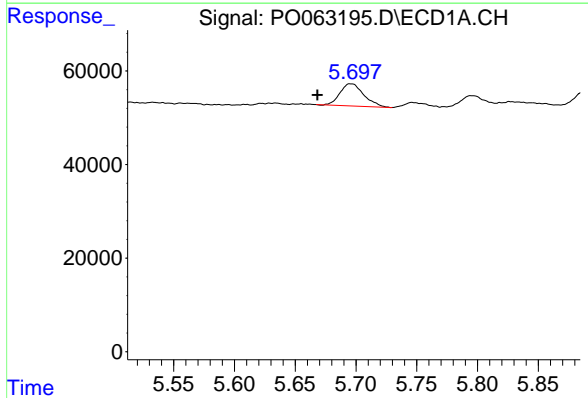
R.T.: 0.000 min
 Exp R.T.: 5.571 min
 Response: 0
 Conc: N.D.

Instrument :
 ECD_O
 ClientSampleId :
 173-38-(0-2)



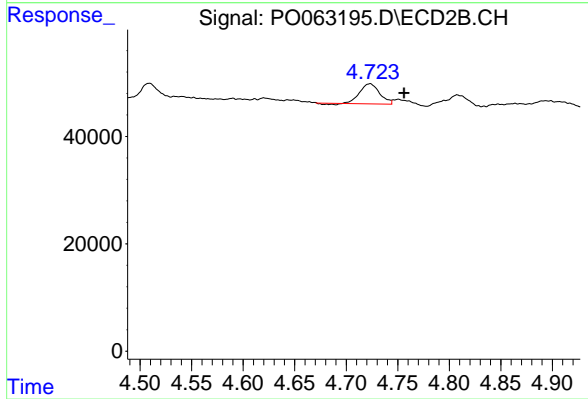
#5 AR-1016-3

R.T.: 4.723 min
 Delta R.T.: 0.009 min
 Response: 50400
 Conc: 40.77 ng/ml



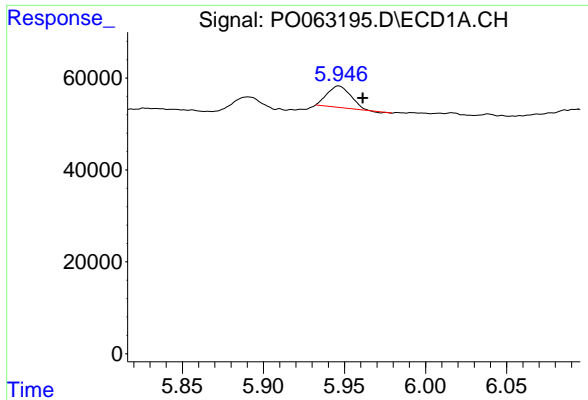
#6 AR-1016-4

R.T.: 5.696 min
 Delta R.T.: 0.028 min
 Response: 64833
 Conc: 38.25 ng/ml



#6 AR-1016-4

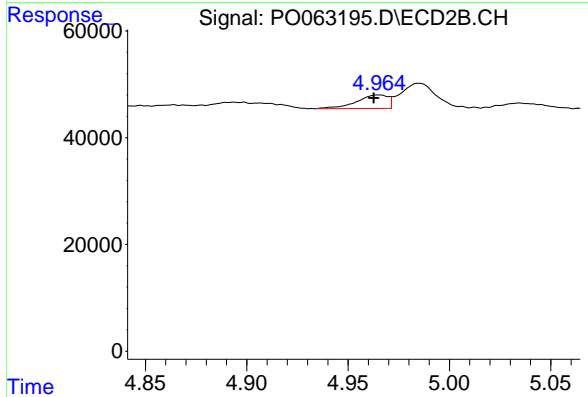
R.T.: 4.723 min
 Delta R.T.: -0.033 min
 Response: 50400
 Conc: 51.29 ng/ml



#7 AR-1016-5

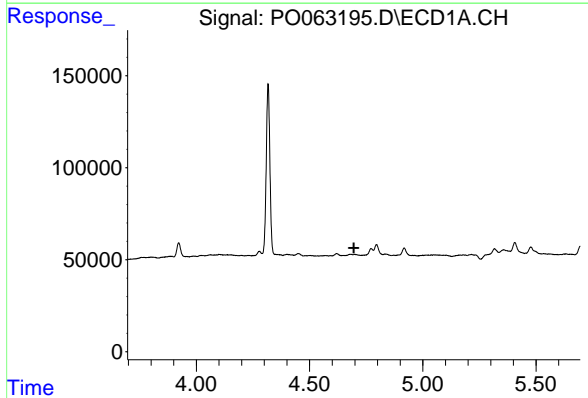
R.T.: 5.947 min
 Delta R.T.: -0.015 min
 Response: 46845
 Conc: 26.34 ng/ml

Instrument :
 ECD_O
 ClientSampleId :
 173-38-(0-2)



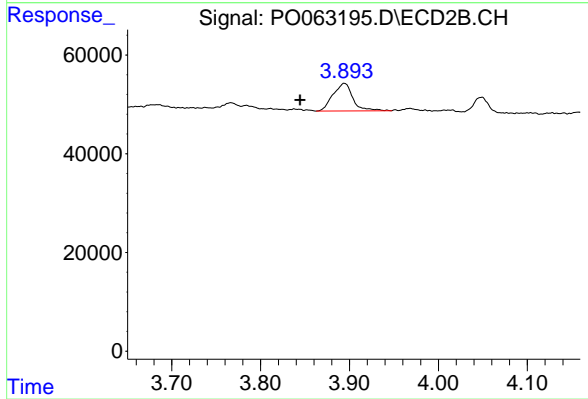
#7 AR-1016-5

R.T.: 4.965 min
 Delta R.T.: 0.002 min
 Response: 27398
 Conc: 21.25 ng/ml



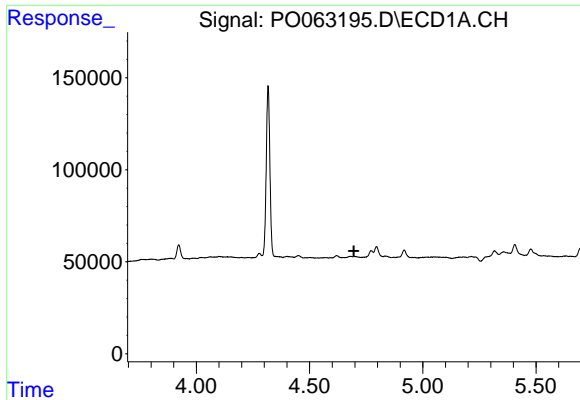
#10 AR-1221-3

R.T.: 0.000 min
 Exp R.T. : 4.696 min
 Response: 0
 Conc: N.D.



#10 AR-1221-3

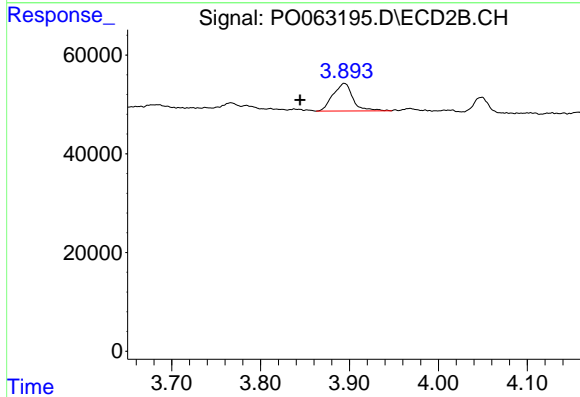
R.T.: 3.894 min
 Delta R.T.: 0.050 min
 Response: 86872
 Conc: 73.82 ng/ml



#11 AR-1232-1

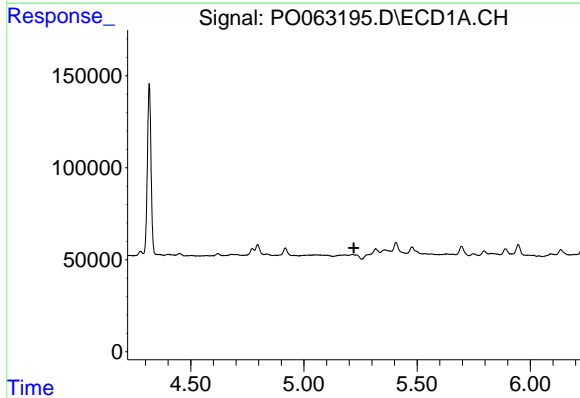
R.T.: 0.000 min
 Exp R.T. : 4.696 min
 Response: 0
 Conc: N.D.

Instrument :
 ECD_O
 ClientSampleId :
 173-38-(0-2)



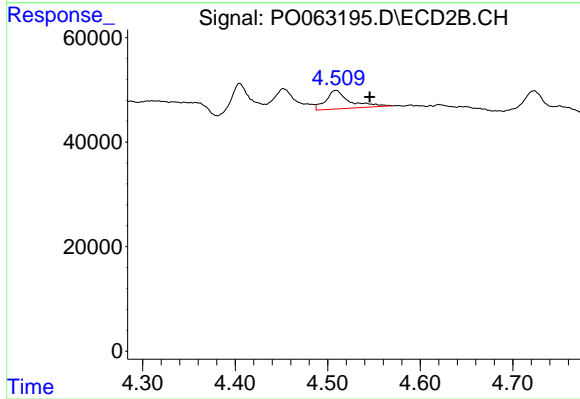
#11 AR-1232-1

R.T.: 3.894 min
 Delta R.T.: 0.050 min
 Response: 86872
 Conc: 56.06 ng/ml



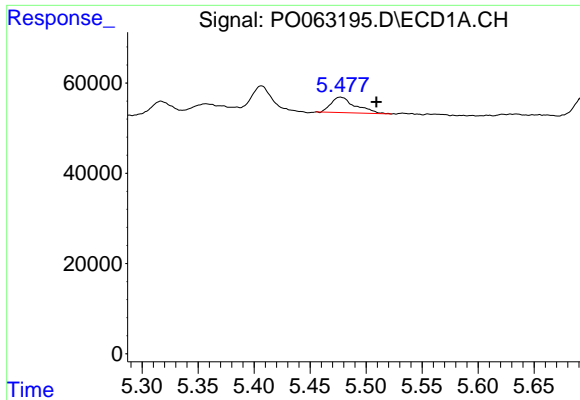
#12 AR-1232-2

R.T.: 0.000 min
 Exp R.T. : 5.221 min
 Response: 0
 Conc: N.D.



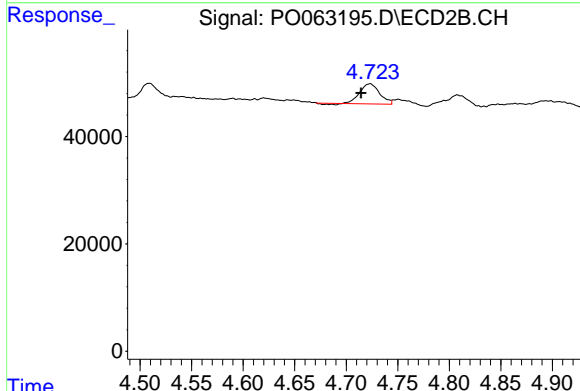
#12 AR-1232-2

R.T.: 4.509 min
 Delta R.T.: -0.037 min
 Response: 62597
 Conc: 36.26 ng/ml

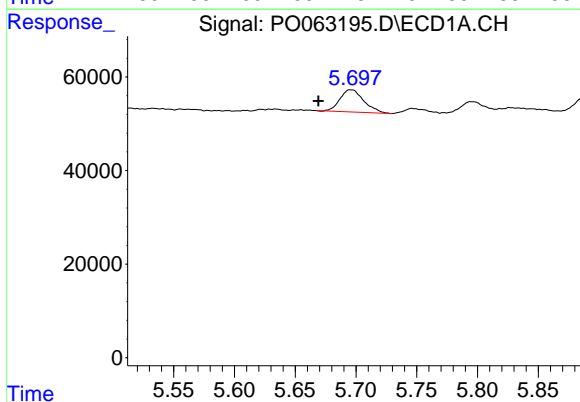


#13 AR-1232-3
 R.T.: 5.477 min
 Delta R.T.: -0.032 min
 Response: 51604
 Conc: 20.17 ng/ml

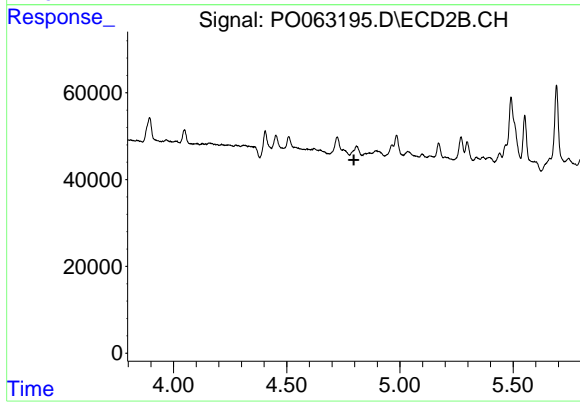
Instrument :
 ECD_O
 ClientSampled :
 173-38-(0-2)



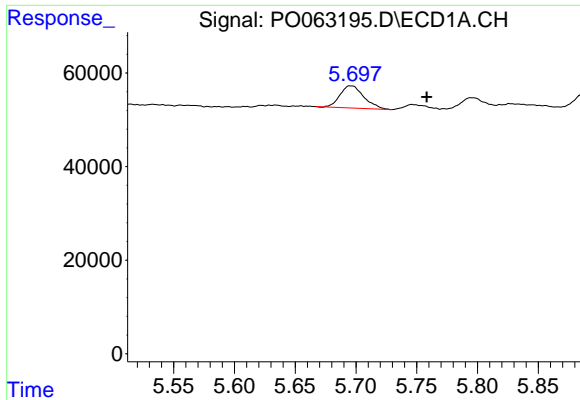
#13 AR-1232-3
 R.T.: 4.723 min
 Delta R.T.: 0.009 min
 Response: 50400
 Conc: 55.14 ng/ml



#14 AR-1232-4
 R.T.: 5.696 min
 Delta R.T.: 0.027 min
 Response: 64833
 Conc: 50.43 ng/ml

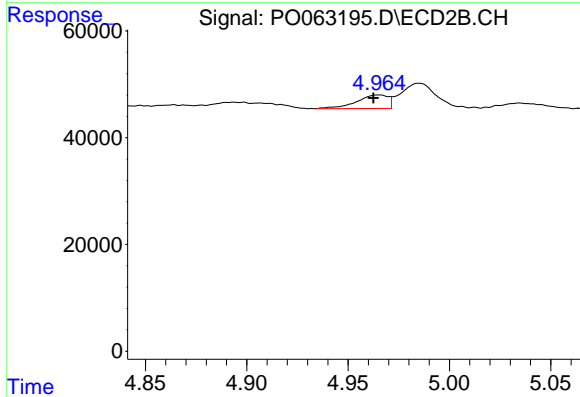


#14 AR-1232-4
 R.T.: 0.000 min
 Exp R.T.: 4.797 min
 Response: 0
 Conc: N.D.

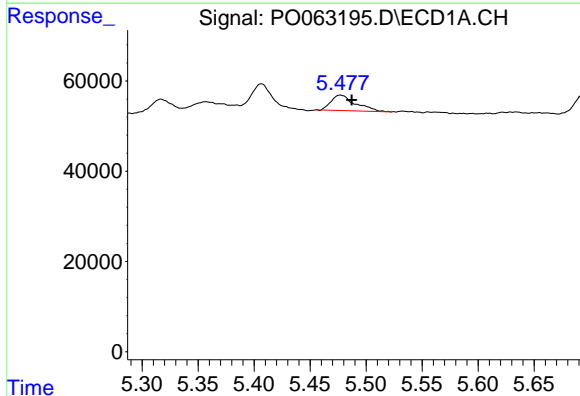


#15 AR-1232-5
 R.T.: 5.696 min
 Delta R.T.: -0.062 min
 Response: 64833
 Conc: 65.51 ng/ml

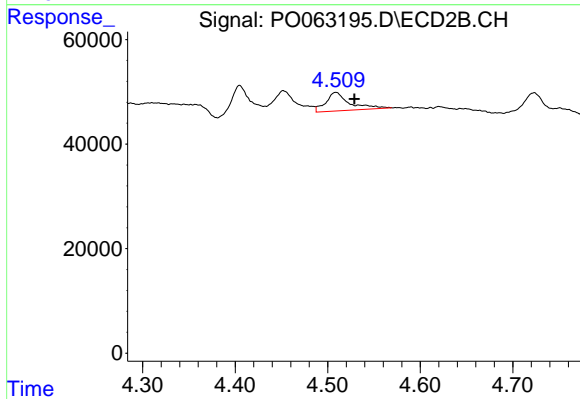
Instrument :
 ECD_O
 ClientSampleId :
 173-38-(0-2)



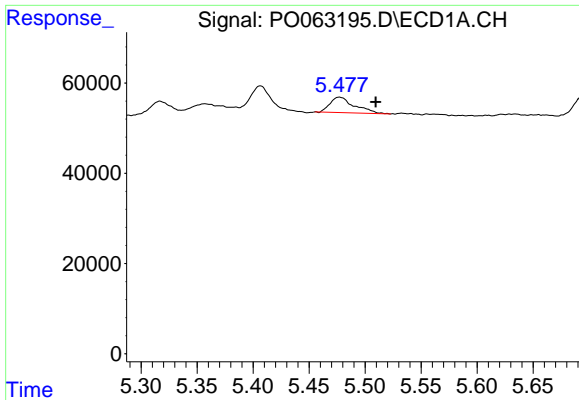
#15 AR-1232-5
 R.T.: 4.965 min
 Delta R.T.: 0.003 min
 Response: 27398
 Conc: 31.02 ng/ml



#16 AR-1242-1
 R.T.: 5.477 min
 Delta R.T.: -0.010 min
 Response: 51604
 Conc: 27.85 ng/ml



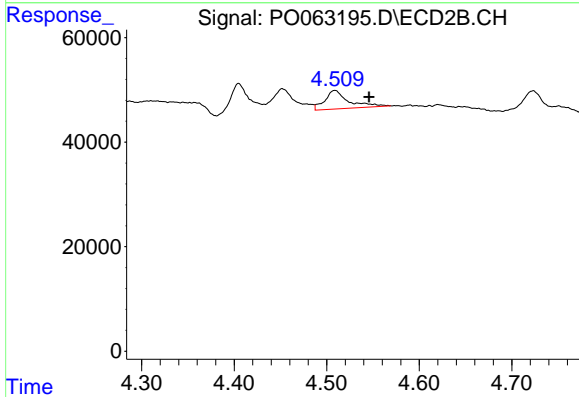
#16 AR-1242-1
 R.T.: 4.509 min
 Delta R.T.: -0.020 min
 Response: 62597
 Conc: 52.05 ng/ml



#17 AR-1242-2

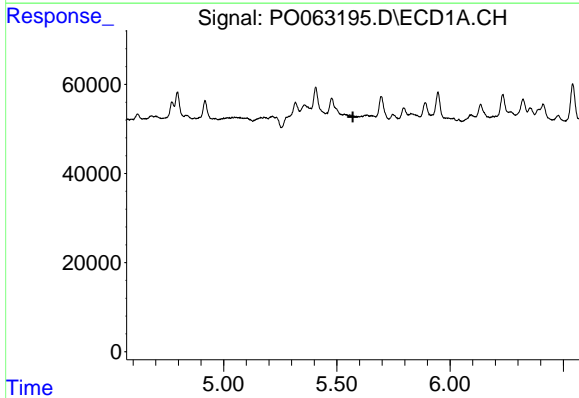
R.T.: 5.477 min
 Delta R.T.: -0.032 min
 Response: 51604
 Conc: 19.45 ng/ml

Instrument :
 ECD_O
 ClientSampleId :
 173-38-(0-2)



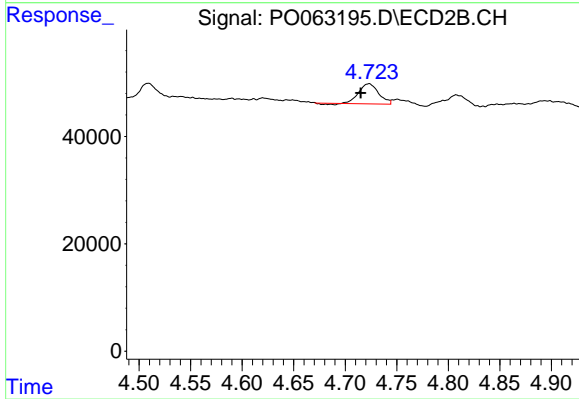
#17 AR-1242-2

R.T.: 4.509 min
 Delta R.T.: -0.037 min
 Response: 62597
 Conc: 35.14 ng/ml



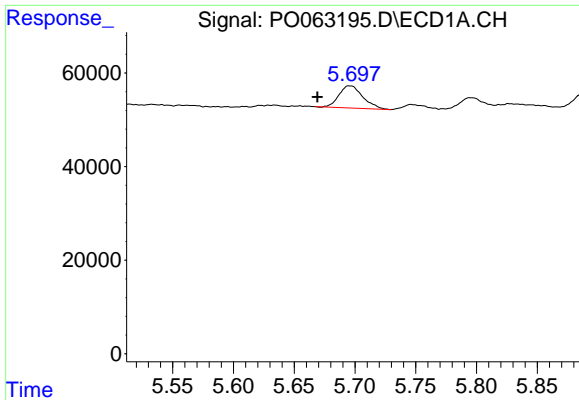
#18 AR-1242-3

R.T.: 0.000 min
 Exp R.T. : 5.571 min
 Response: 0
 Conc: N.D.



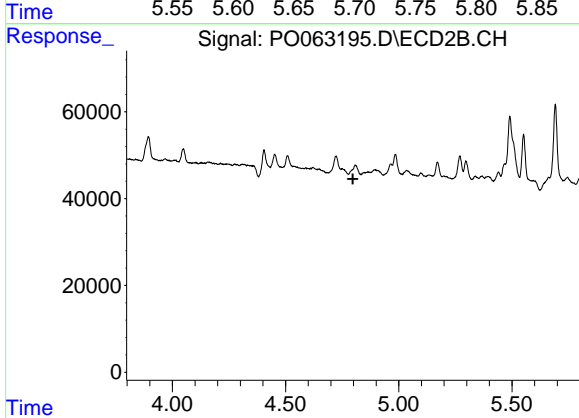
#18 AR-1242-3

R.T.: 4.723 min
 Delta R.T.: 0.008 min
 Response: 50400
 Conc: 52.94 ng/ml

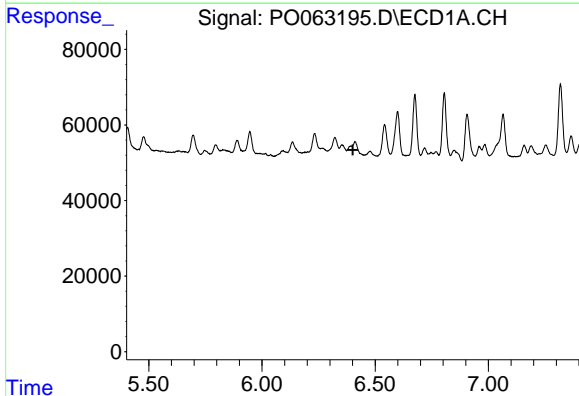


#19 AR-1242-4
 R.T.: 5.696 min
 Delta R.T.: 0.027 min
 Response: 64833
 Conc: 48.03 ng/ml

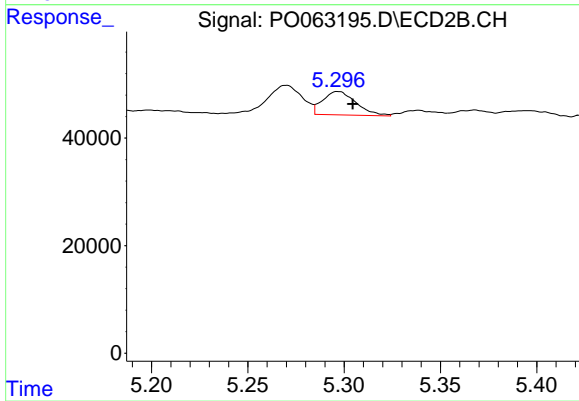
Instrument :
 ECD_O
 ClientSampleId :
 173-38-(0-2)



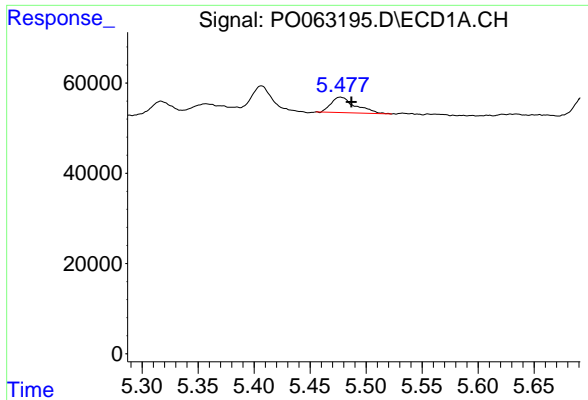
#19 AR-1242-4
 R.T.: 0.000 min
 Exp R.T. : 4.797 min
 Response: 0
 Conc: N.D.



#20 AR-1242-5
 R.T.: 0.000 min
 Exp R.T. : 6.401 min
 Response: 0
 Conc: N.D.

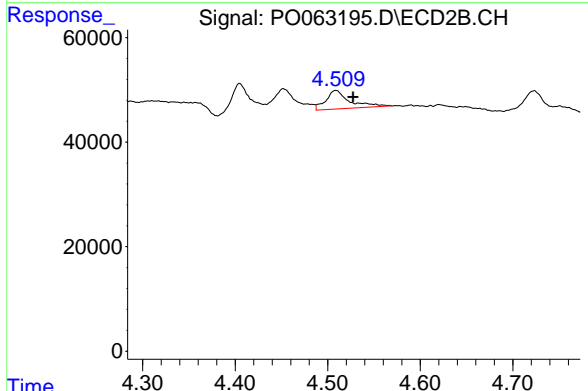


#20 AR-1242-5
 R.T.: 5.297 min
 Delta R.T.: -0.007 min
 Response: 52334
 Conc: 43.86 ng/ml

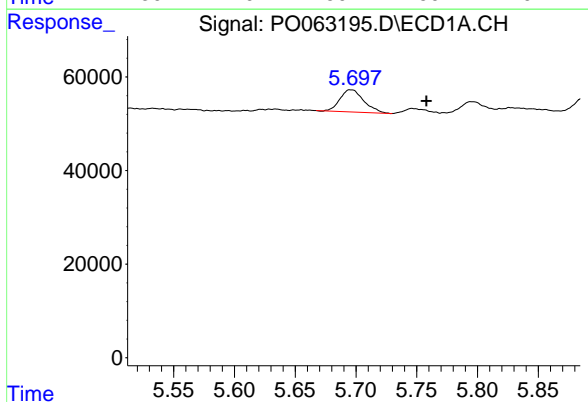


#21 AR-1248-1
 R.T.: 5.477 min
 Delta R.T.: -0.010 min
 Response: 51604
 Conc: 36.00 ng/ml

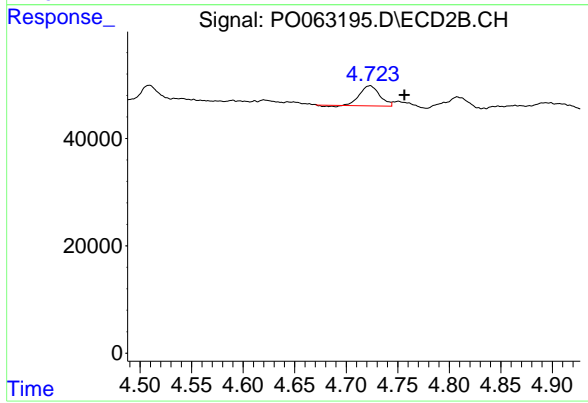
Instrument :
 ECD_O
 ClientSampled :
 173-38-(0-2)



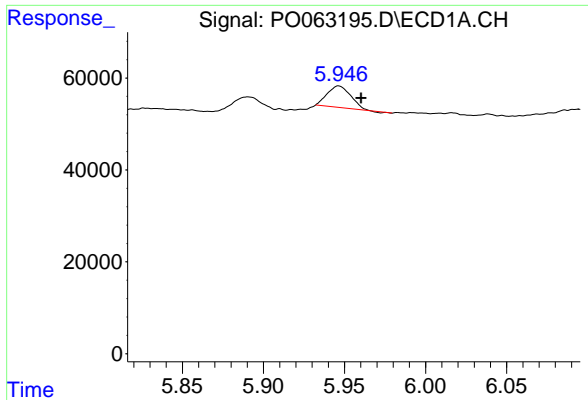
#21 AR-1248-1
 R.T.: 4.509 min
 Delta R.T.: -0.019 min
 Response: 62597
 Conc: 63.76 ng/ml



#22 AR-1248-2
 R.T.: 5.696 min
 Delta R.T.: -0.062 min
 Response: 64833
 Conc: 32.38 ng/ml

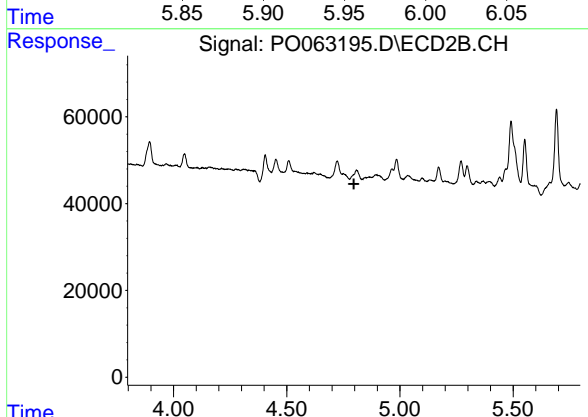


#22 AR-1248-2
 R.T.: 4.723 min
 Delta R.T.: -0.034 min
 Response: 50400
 Conc: 39.78 ng/ml

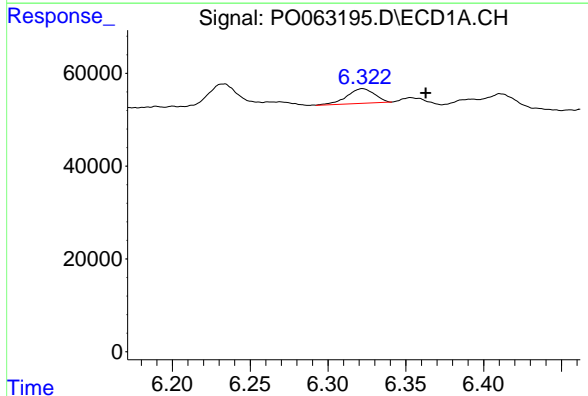


#23 AR-1248-3
 R.T.: 5.947 min
 Delta R.T.: -0.014 min
 Response: 46845
 Conc: 21.21 ng/ml

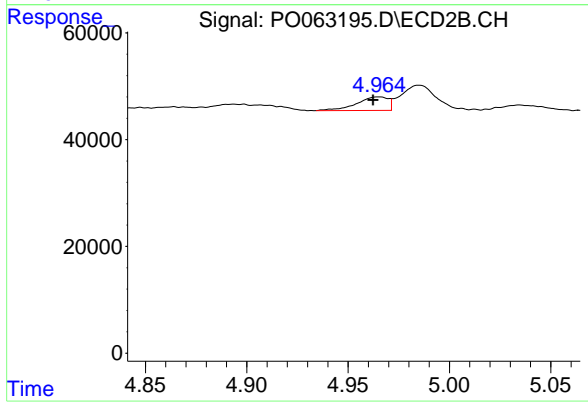
Instrument :
 ECD_O
 ClientSampled :
 173-38-(0-2)



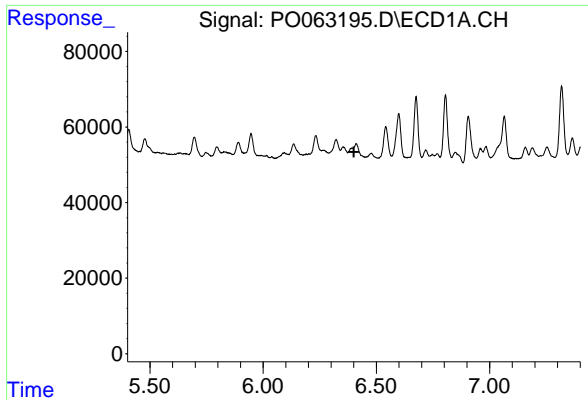
#23 AR-1248-3
 R.T.: 0.000 min
 Exp R.T. : 4.796 min
 Response: 0
 Conc: N.D.



#24 AR-1248-4
 R.T.: 6.322 min
 Delta R.T.: -0.041 min
 Response: 39239
 Conc: 15.36 ng/ml



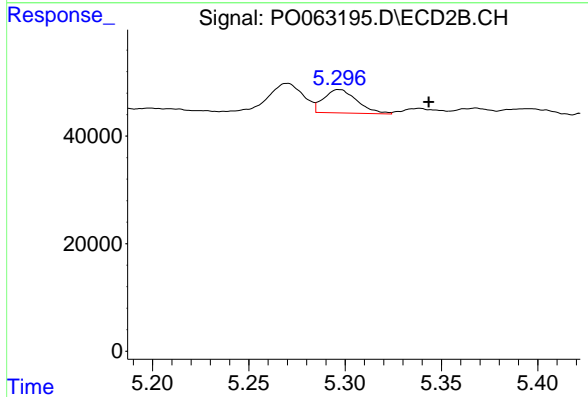
#24 AR-1248-4
 R.T.: 4.965 min
 Delta R.T.: 0.003 min
 Response: 27398
 Conc: 17.31 ng/ml



#25 AR-1248-5

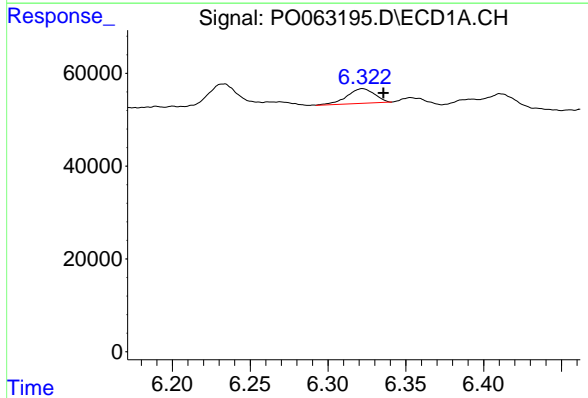
R.T.: 0.000 min
 Exp R.T.: 6.401 min
 Response: 0
 Conc: N.D.

Instrument :
 ECD_O
 ClientSampleId :
 173-38-(0-2)



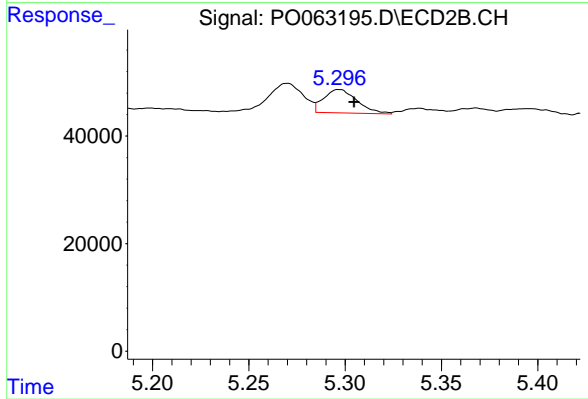
#25 AR-1248-5

R.T.: 5.297 min
 Delta R.T.: -0.046 min
 Response: 52334
 Conc: 34.01 ng/ml



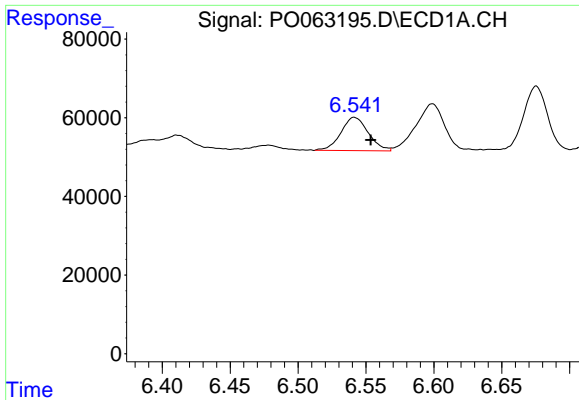
#26 AR-1254-1

R.T.: 6.322 min
 Delta R.T.: -0.013 min
 Response: 39239
 Conc: 14.72 ng/ml



#26 AR-1254-1

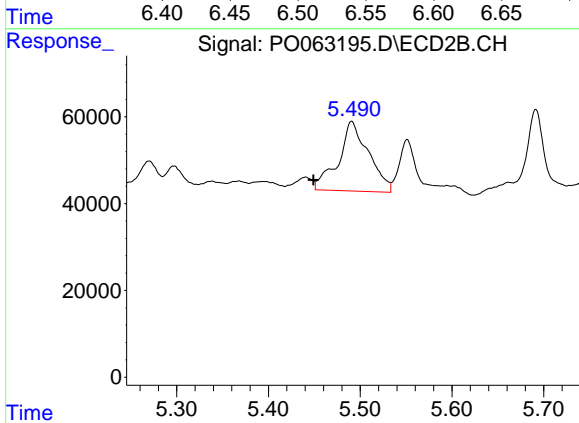
R.T.: 5.297 min
 Delta R.T.: -0.008 min
 Response: 52334
 Conc: 21.40 ng/ml



#27 AR-1254-2

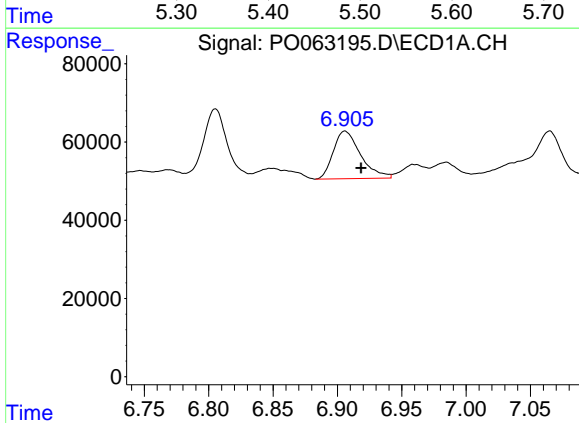
R.T.: 6.541 min
 Delta R.T.: -0.012 min
 Response: 119092
 Conc: 29.13 ng/ml

Instrument :
 ECD_O
 ClientSampled :
 173-38-(0-2)



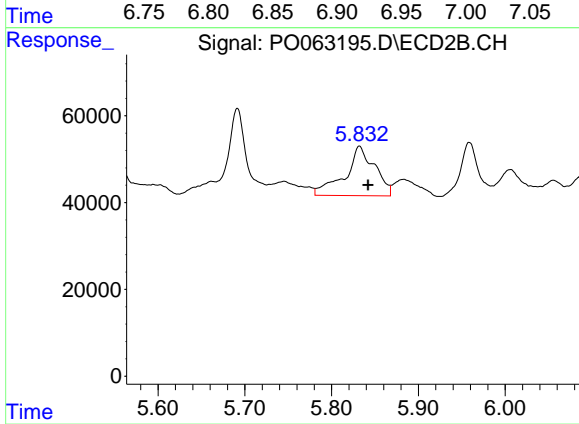
#27 AR-1254-2

R.T.: 5.491 min
 Delta R.T.: 0.042 min
 Response: 366888
 Conc: 173.23 ng/ml



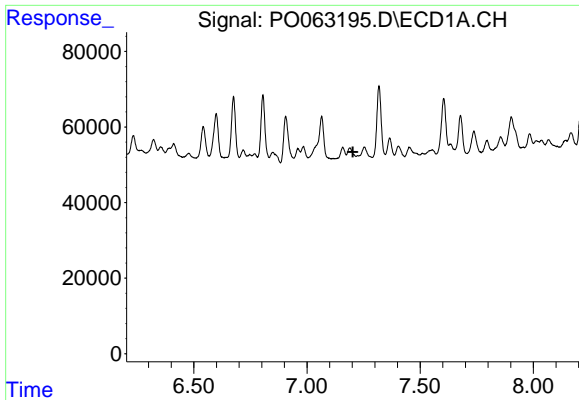
#28 AR-1254-3

R.T.: 6.906 min
 Delta R.T.: -0.012 min
 Response: 179230
 Conc: 42.84 ng/ml



#28 AR-1254-3

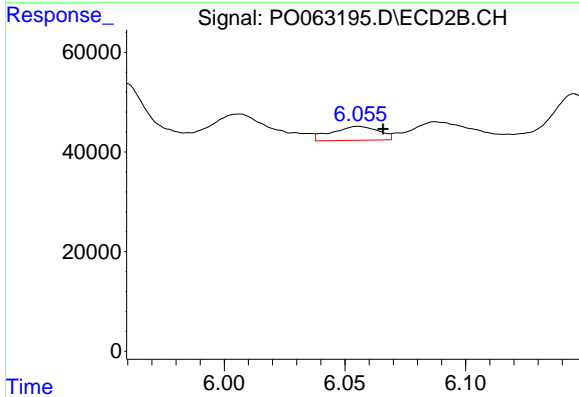
R.T.: 5.832 min
 Delta R.T.: -0.010 min
 Response: 272060
 Conc: 83.50 ng/ml



#29 AR-1254-4

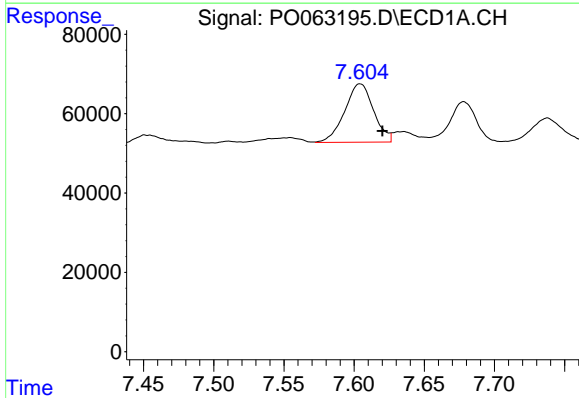
R.T.: 0.000 min
 Exp R.T.: 7.203 min
 Response: 0
 Conc: N.D.

Instrument :
 ECD_O
 ClientSampleId :
 173-38-(0-2)



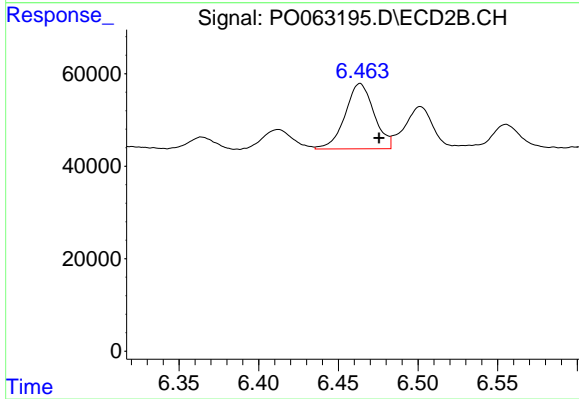
#29 AR-1254-4

R.T.: 6.056 min
 Delta R.T.: -0.010 min
 Response: 37926
 Conc: 19.64 ng/ml



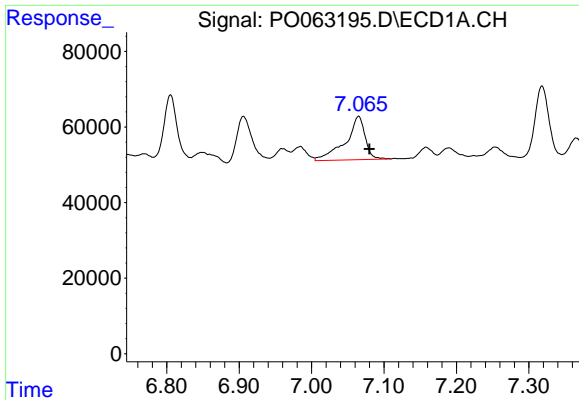
#30 AR-1254-5

R.T.: 7.604 min
 Delta R.T.: -0.016 min
 Response: 210862
 Conc: 67.28 ng/ml



#30 AR-1254-5

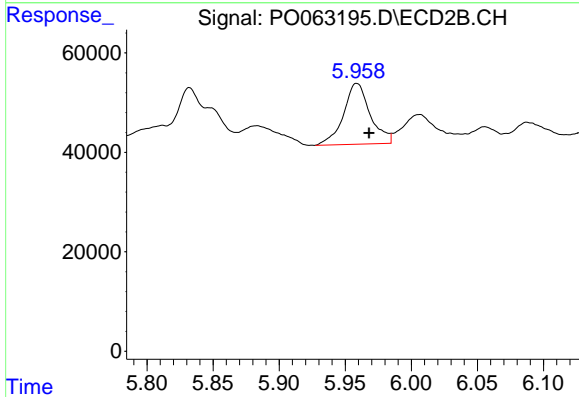
R.T.: 6.464 min
 Delta R.T.: -0.012 min
 Response: 177803
 Conc: 67.32 ng/ml



#31 AR-1260-1

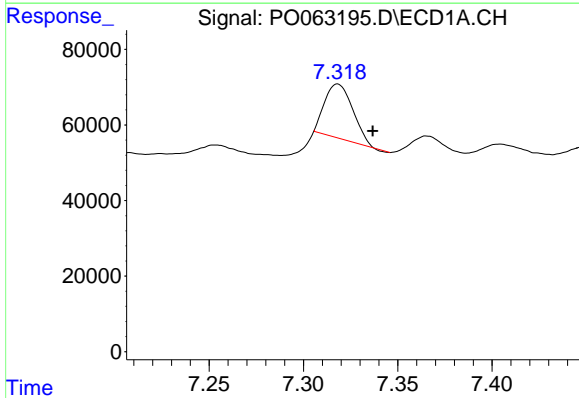
R.T.: 7.065 min
 Delta R.T.: -0.015 min
 Response: 217643
 Conc: 76.44 ng/ml

Instrument :
 ECD_O
 ClientSampleId :
 173-38-(0-2)



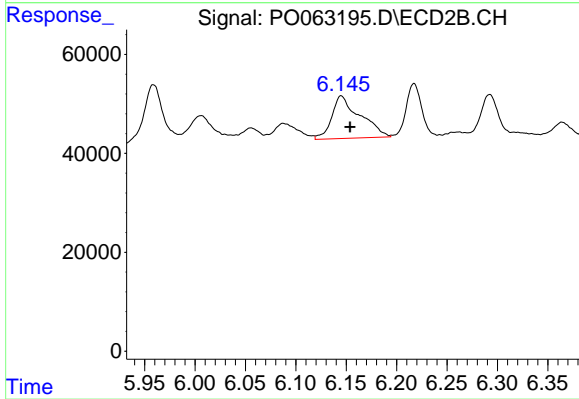
#31 AR-1260-1

R.T.: 5.959 min
 Delta R.T.: -0.009 min
 Response: 171869
 Conc: 80.89 ng/ml



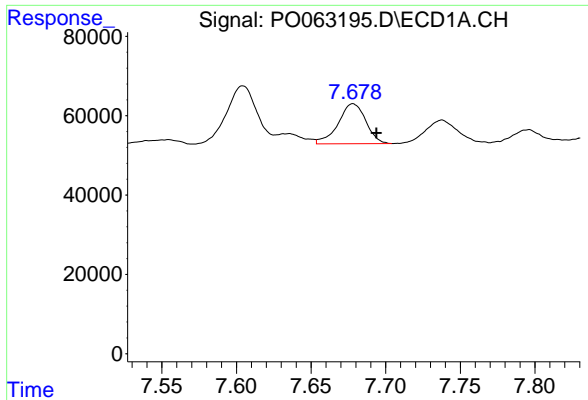
#32 AR-1260-2

R.T.: 7.318 min
 Delta R.T.: -0.019 min
 Response: 147431
 Conc: 42.98 ng/ml



#32 AR-1260-2

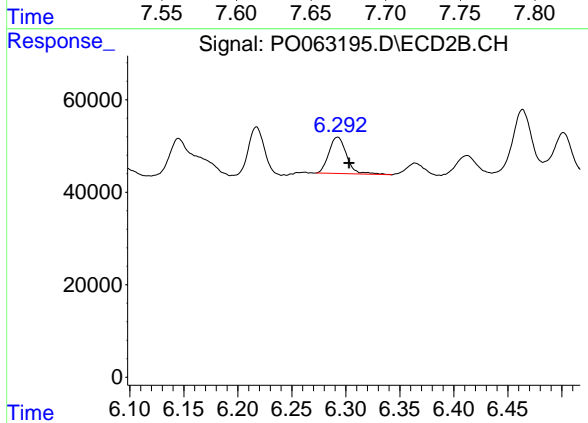
R.T.: 6.145 min
 Delta R.T.: -0.009 min
 Response: 167904
 Conc: 66.17 ng/ml



#33 AR-1260-3

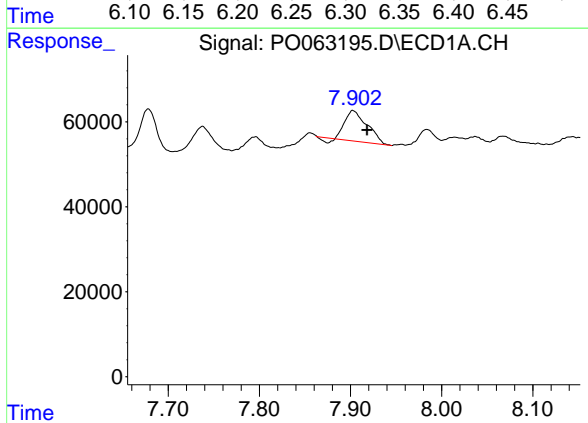
R.T.: 7.678 min
 Delta R.T.: -0.016 min
 Response: 130228
 Conc: 49.21 ng/ml

Instrument :
 ECD_O
 ClientSampled :
 173-38-(0-2)



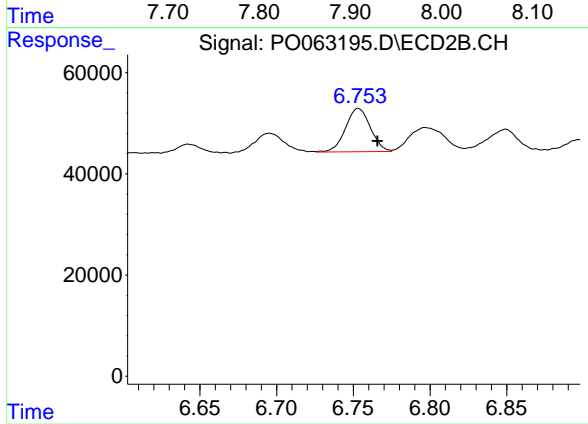
#33 AR-1260-3

R.T.: 6.292 min
 Delta R.T.: -0.011 min
 Response: 89685
 Conc: 39.72 ng/ml



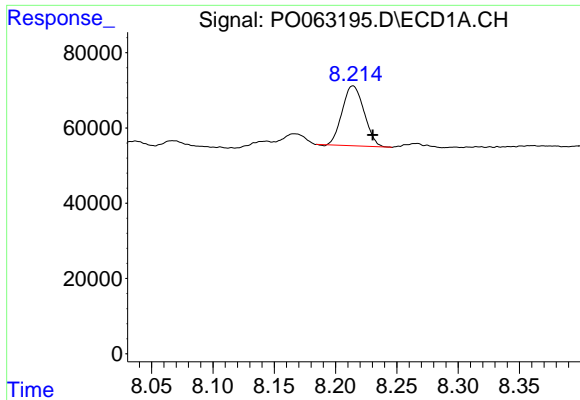
#34 AR-1260-4

R.T.: 7.903 min
 Delta R.T.: -0.016 min
 Response: 119750
 Conc: 42.81 ng/ml



#34 AR-1260-4

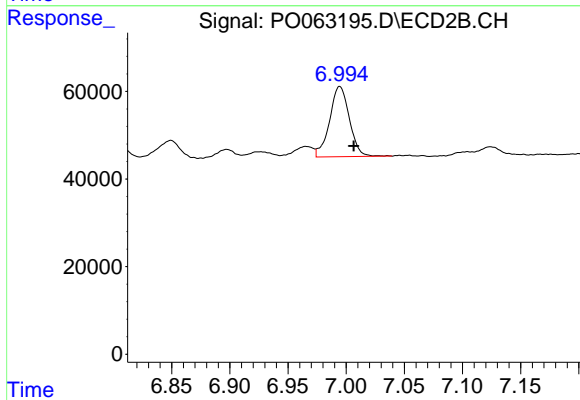
R.T.: 6.753 min
 Delta R.T.: -0.012 min
 Response: 97274
 Conc: 55.40 ng/ml



#35 AR-1260-5

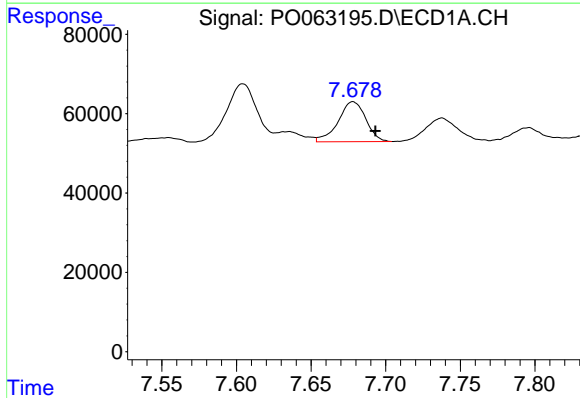
R.T.: 8.214 min
 Delta R.T.: -0.016 min
 Response: 197837
 Conc: 37.79 ng/ml

Instrument :
 ECD_O
 ClientSampleId :
 173-38-(0-2)



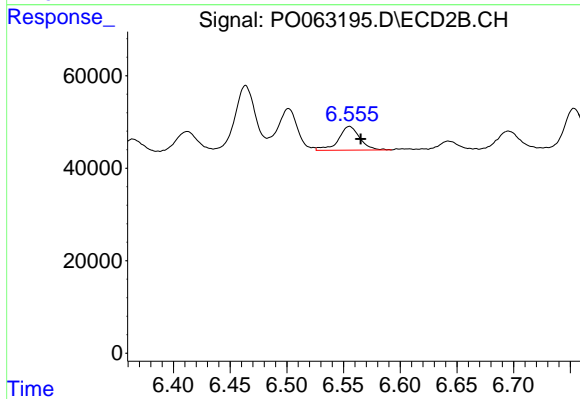
#35 AR-1260-5

R.T.: 6.995 min
 Delta R.T.: -0.012 min
 Response: 189188
 Conc: 52.52 ng/ml



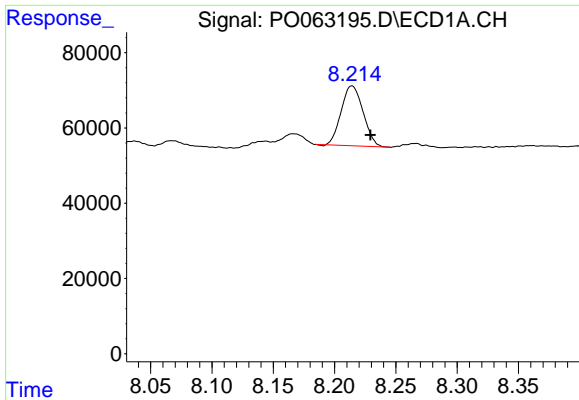
#36 AR-1262-1

R.T.: 7.678 min
 Delta R.T.: -0.015 min
 Response: 130228
 Conc: 31.73 ng/ml



#36 AR-1262-1

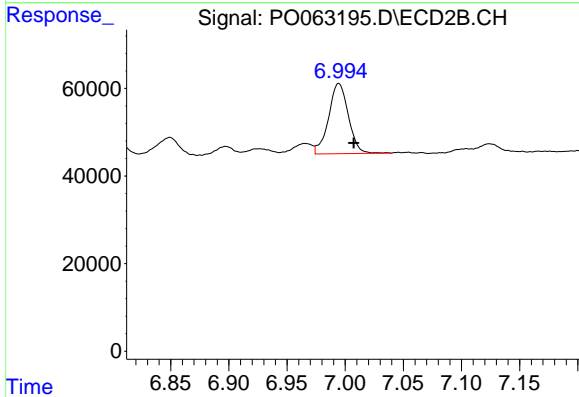
R.T.: 6.555 min
 Delta R.T.: -0.010 min
 Response: 67214
 Conc: 56.40 ng/ml



#37 AR-1262-2

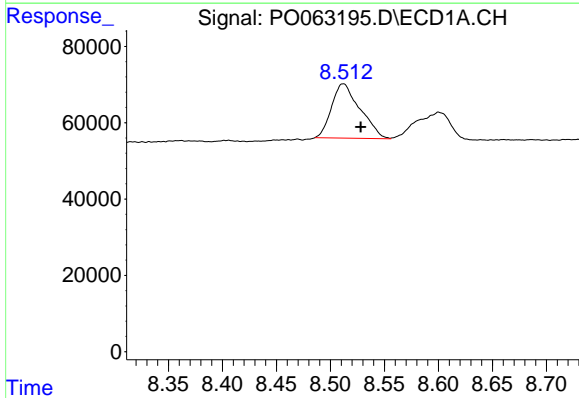
R.T.: 8.214 min
 Delta R.T.: -0.015 min
 Response: 197837
 Conc: 30.68 ng/ml

Instrument :
 ECD_O
 ClientSampleId :
 173-38-(0-2)



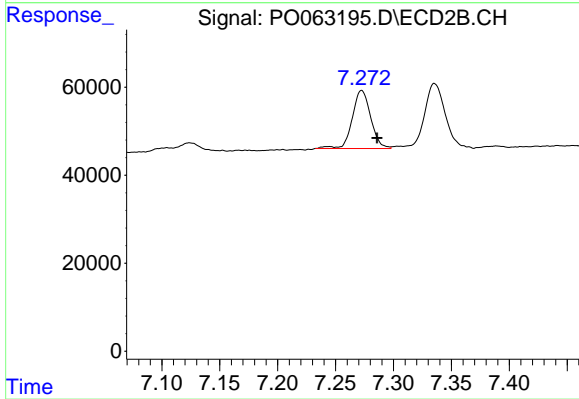
#37 AR-1262-2

R.T.: 6.995 min
 Delta R.T.: -0.013 min
 Response: 189188
 Conc: 45.03 ng/ml



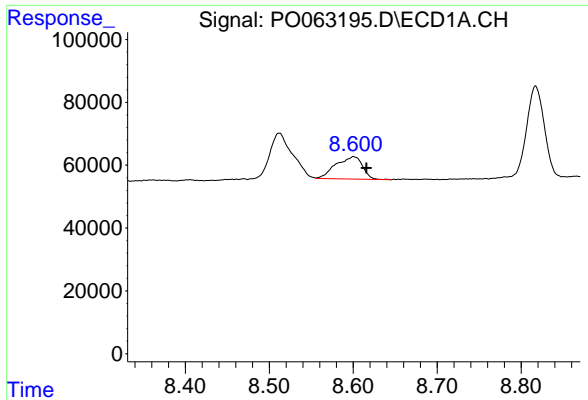
#38 AR-1262-3

R.T.: 8.512 min
 Delta R.T.: -0.016 min
 Response: 261122
 Conc: 59.38 ng/ml



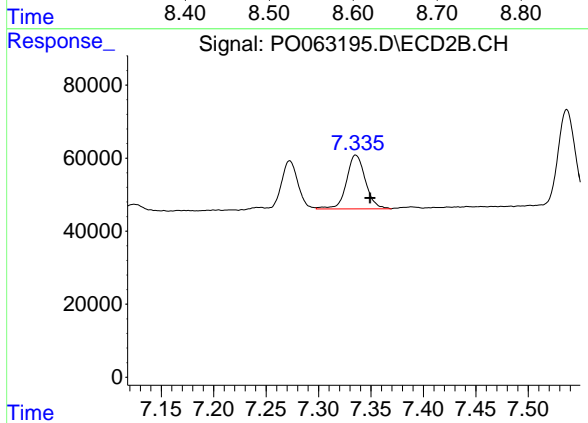
#38 AR-1262-3

R.T.: 7.273 min
 Delta R.T.: -0.013 min
 Response: 146408
 Conc: 83.24 ng/ml

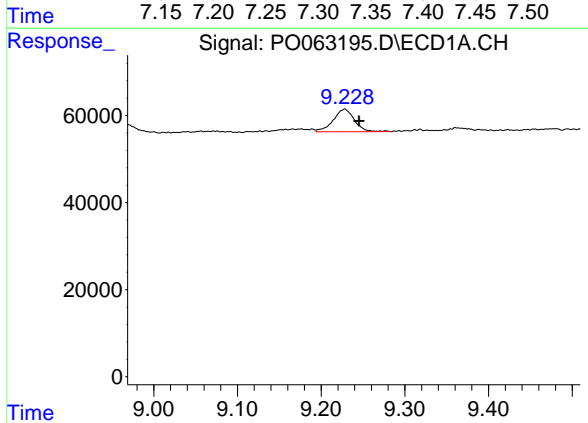


#39 AR-1262-4
 R.T.: 8.601 min
 Delta R.T.: -0.015 min
 Response: 156665
 Conc: 45.34 ng/ml

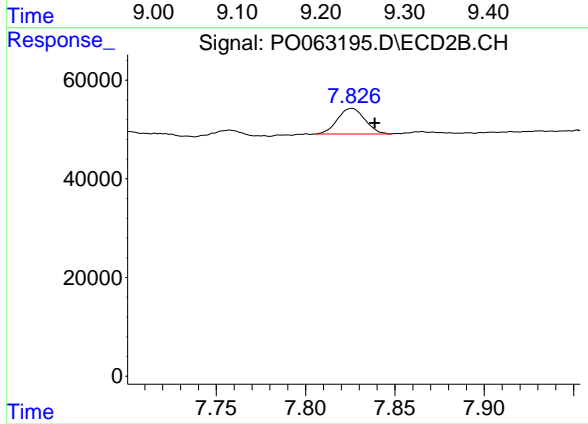
Instrument :
 ECD_O
 ClientSampleId :
 173-38-(0-2)



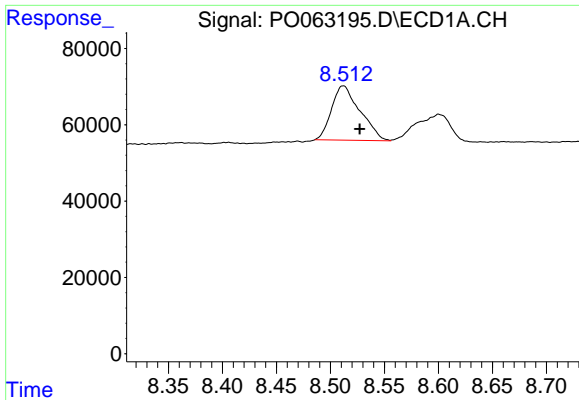
#39 AR-1262-4
 R.T.: 7.336 min
 Delta R.T.: -0.014 min
 Response: 185805
 Conc: 60.78 ng/ml



#40 AR-1262-5
 R.T.: 9.228 min
 Delta R.T.: -0.017 min
 Response: 91972
 Conc: 40.72 ng/ml



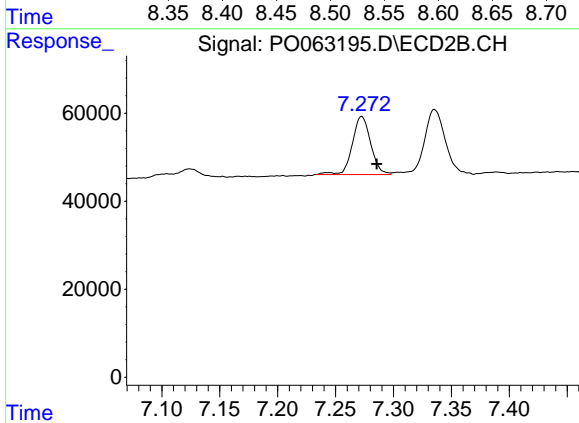
#40 AR-1262-5
 R.T.: 7.826 min
 Delta R.T.: -0.013 min
 Response: 55573
 Conc: 42.55 ng/ml



#41 AR-1268-1

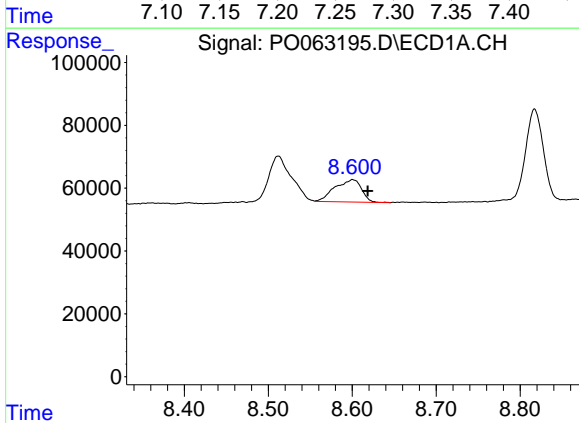
R.T.: 8.512 min
Delta R.T.: -0.015 min
Response: 261122
Conc: 34.49 ng/ml

Instrument :
ECD_O
ClientSampled :
173-38-(0-2)



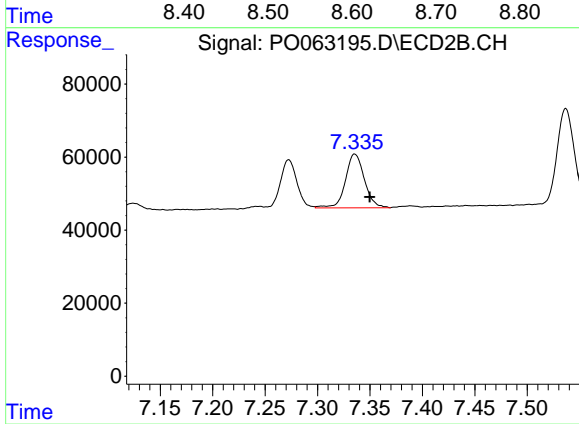
#41 AR-1268-1

R.T.: 7.273 min
Delta R.T.: -0.013 min
Response: 146408
Conc: 31.26 ng/ml



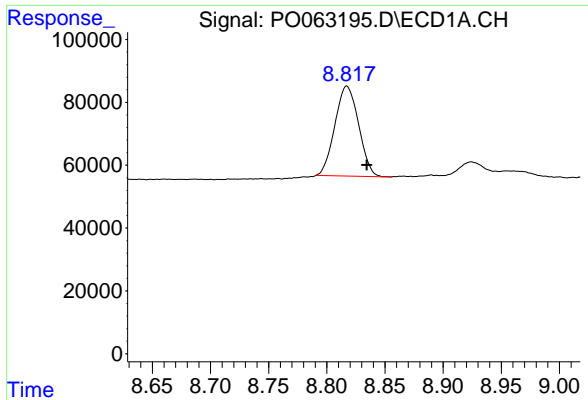
#42 AR-1268-2

R.T.: 8.601 min
Delta R.T.: -0.018 min
Response: 156665
Conc: 22.30 ng/ml



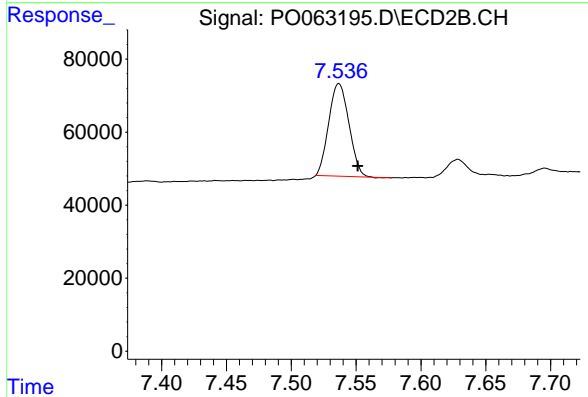
#42 AR-1268-2

R.T.: 7.336 min
Delta R.T.: -0.014 min
Response: 185805
Conc: 44.47 ng/ml

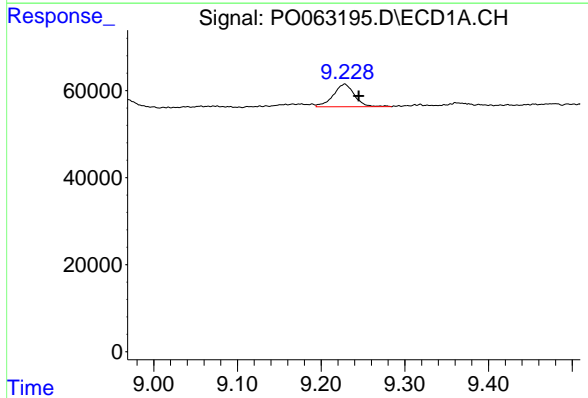


#43 AR-1268-3
 R.T.: 8.817 min
 Delta R.T.: -0.017 min
 Response: 406554
 Conc: 67.82 ng/ml

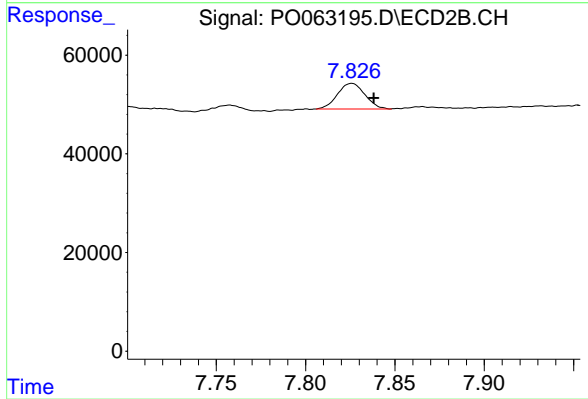
Instrument :
 ECD_O
 ClientSampled :
 173-38-(0-2)



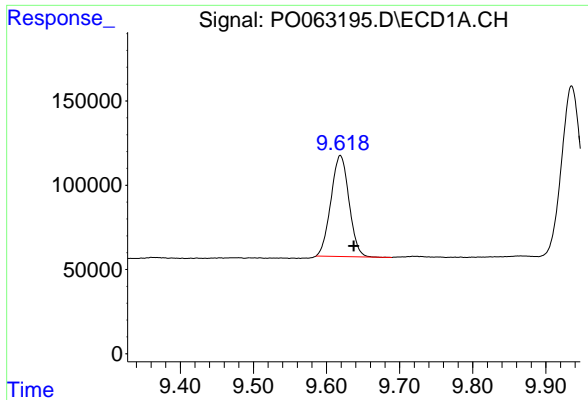
#43 AR-1268-3
 R.T.: 7.537 min
 Delta R.T.: -0.015 min
 Response: 274817
 Conc: 78.87 ng/ml



#44 AR-1268-4
 R.T.: 9.228 min
 Delta R.T.: -0.017 min
 Response: 91972
 Conc: 38.71 ng/ml



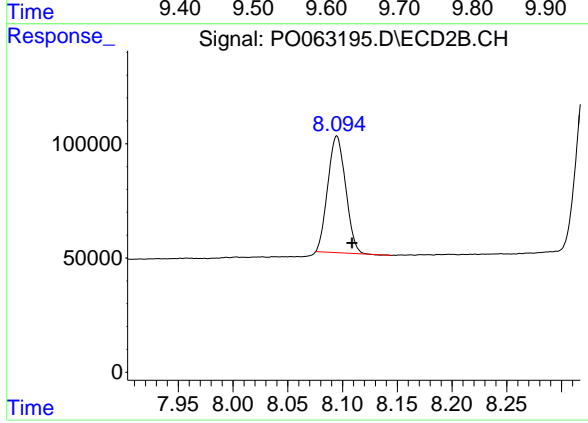
#44 AR-1268-4
 R.T.: 7.826 min
 Delta R.T.: -0.012 min
 Response: 55573
 Conc: 39.00 ng/ml



#45 AR-1268-5

R.T.: 9.619 min
 Delta R.T.: -0.018 min
 Response: 1031508
 Conc: 57.23 ng/ml

Instrument :
 ECD_O
 ClientSampleId :
 173-38-(0-2)



#45 AR-1268-5

R.T.: 8.095 min
 Delta R.T.: -0.014 min
 Response: 578858
 Conc: 62.53 ng/ml