

Data Path : Z:\pestpcbsrv\HPCHEM1\ECD_0\Data\PO102519\
 Data File : P0063158.D
 Signal(s) : Signal #1: ECD1A.CH Signal #2: ECD2B.CH
 Acq On : 25 Oct 2019 12:57
 Operator : HP/AJ
 Sample : K5502-03
 Misc :
 ALS Vial : 12 Sample Multiplier: 1

Instrument :
 ECD_0
ClientSampleId :
 181-50-(0-2)

Manual Integrations
APPROVED
 Ankita
 10/28/2019 10:49:02 AM

Integration File signal 1: autoint1.e
 Integration File signal 2: autoint2.e
 Quant Time: Oct 25 23:12:37 2019
 Quant Method : Z:\pestpcbsrv\HPCHEM1\ECD_0\methods\PO101119.M
 Quant Title : GC EXTRACTABLES
 QLast Update : Sat Oct 12 06:25:38 2019
 Response via : Initial Calibration
 Integrator: ChemStation 6890 Scale Mode: Small noise peaks clipped

Volume Inj. : 2 µl
 Signal #1 Phase : ZB-MR1 Signal #2 Phase: ZB-MR2
 Signal #1 Info : 30Mx0.32mmx 0.50µ Signal #2 Info : 30M x 0.32mm x 0.25µm

Compound	RT#1	RT#2	Resp#1	Resp#2	ng/ml	ng/ml

System Monitoring Compounds						
1) SA Tetrachlo...	4.315	3.478	1115666	891639	18.039m	20.793
2) SA Decachlor...	9.935	8.323	764545	464636	13.664m	15.836
Target Compounds						
31) L7 AR-1260-1	7.067	5.959	125170	120467	43.964	56.697 #
32) L7 AR-1260-2	7.319	6.145	199272	94907	58.087m	37.400 #
33) L7 AR-1260-3	7.679	6.292	112376	90611	42.468	40.127
34) L7 AR-1260-4	7.901	6.755	160419	63261	57.353	36.029 #
35) L7 AR-1260-5	8.215	6.996	157789	140009	30.138	38.865 #

(f)=RT Delta > 1/2 Window (#)=Amounts differ by > 25% (m)=manual int.

Data Path : Z:\pestpcbsrv\HPCHEM1\ECD_O\Data\PO102519\
 Data File : PO063158.D
 Signal(s) : Signal #1: ECD1A.CH Signal #2: ECD2B.CH
 Acq On : 25 Oct 2019 12:57
 Operator : HP/AJ
 Sample : K5502-03
 Misc :
 ALS Vial : 12 Sample Multiplier: 1

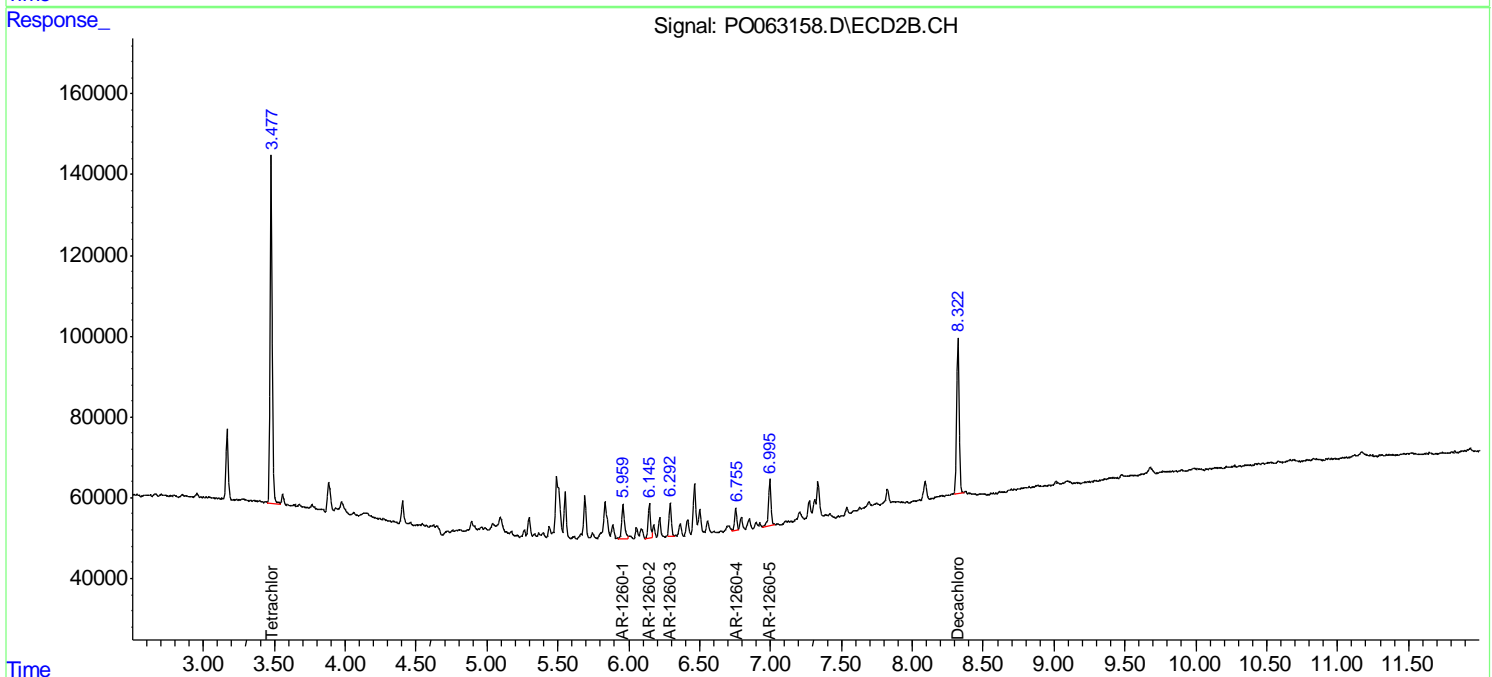
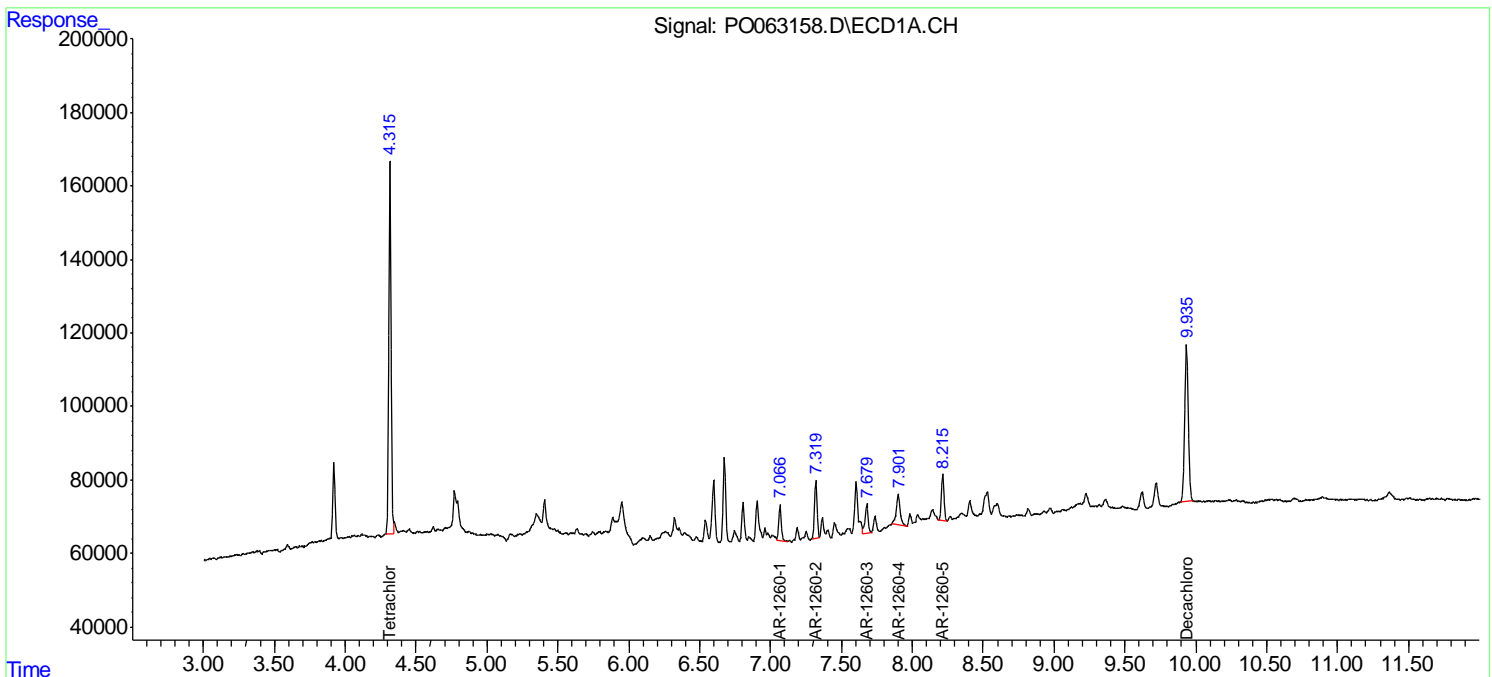
Instrument :
 ECD_O
 ClientSampled :
 181-50-(0-2)

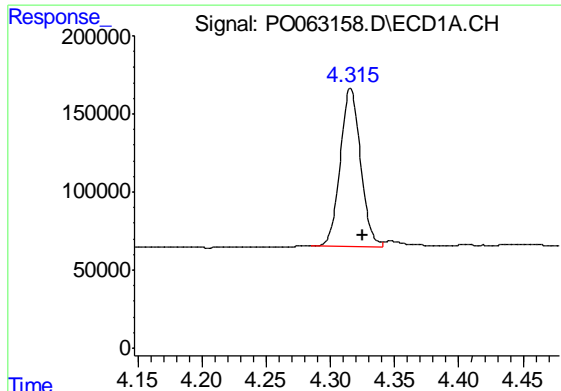
Manual Integrations
 APPROVED

Ankita
 10/28/2019 10:49:02 AM

Integration File signal 1: autoint1.e
 Integration File signal 2: autoint2.e
 Quant Time: Oct 25 23:12:37 2019
 Quant Method : Z:\pestpcbsrv\HPCHEM1\ECD_O\methods\PO101119.M
 Quant Title : GC EXTRACTABLES
 QLast Update : Sat Oct 12 06:25:38 2019
 Response via : Initial Calibration
 Integrator: ChemStation 6890 Scale Mode: Small noise peaks clipped

Volume Inj. : 2 µl
 Signal #1 Phase : ZB-MR1 Signal #2 Phase: ZB-MR2
 Signal #1 Info : 30Mx0.32mmx 0.50µ Signal #2 Info : 30M x 0.32mm x 0.25µm

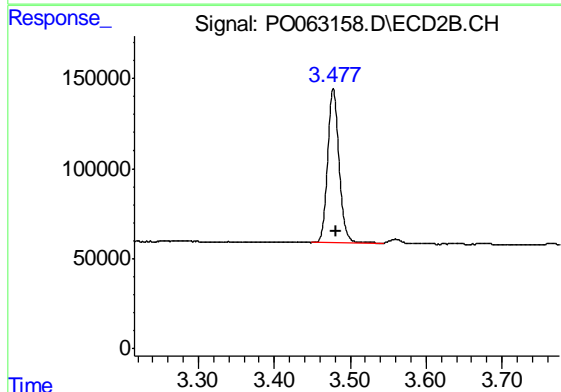




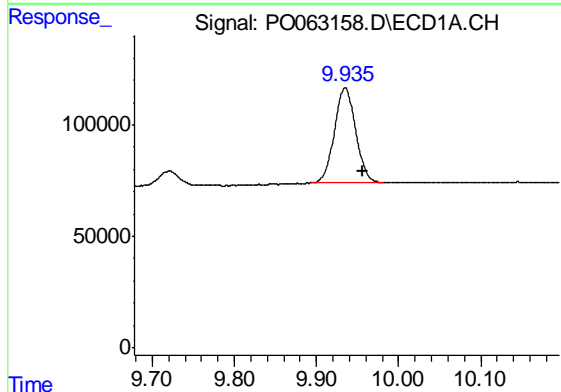
#1 Tetrachloro-m-xylene
 R.T.: 4.315 min
 Delta R.T.: -0.010 min
 Response: 1115666
 Conc: 18.04 ng/ml m

Instrument :
 ECD_O
 ClientSampleId :
 181-50-(0-2)

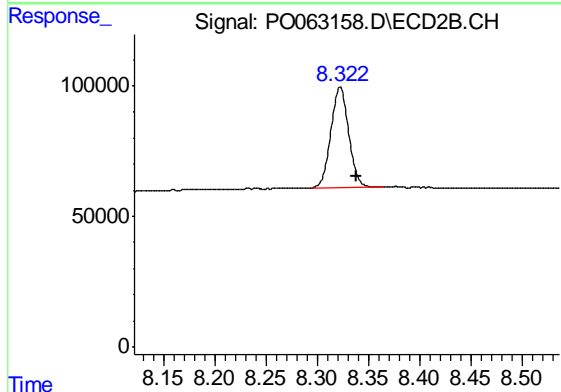
Manual Integrations
 APPROVED
 Ankita
 10/28/2019 10:49:02 AM



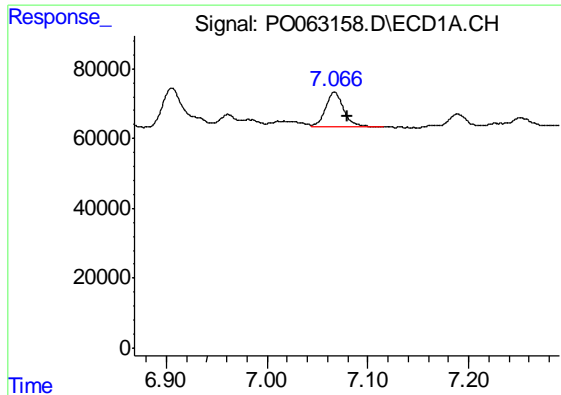
#1 Tetrachloro-m-xylene
 R.T.: 3.478 min
 Delta R.T.: -0.004 min
 Response: 891639
 Conc: 20.79 ng/ml



#2 Decachlorobiphenyl
 R.T.: 9.935 min
 Delta R.T.: -0.022 min
 Response: 764545
 Conc: 13.66 ng/ml m



#2 Decachlorobiphenyl
 R.T.: 8.323 min
 Delta R.T.: -0.015 min
 Response: 464636
 Conc: 15.84 ng/ml



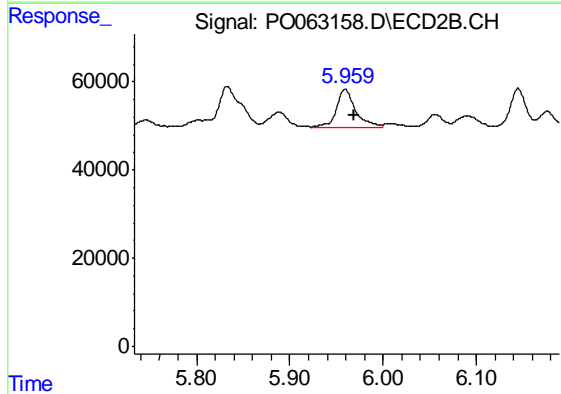
#31 AR-1260-1

R.T.: 7.067 min
 Delta R.T.: -0.013 min
 Response: 125170
 Conc: 43.96 ng/ml

Instrument :
 ECD_O
 ClientSampleId :
 181-50-(0-2)

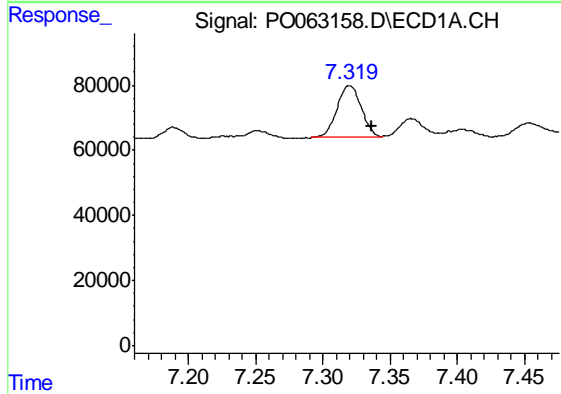
Manual Integrations
 APPROVED

Ankita
 10/28/2019 10:49:02 AM



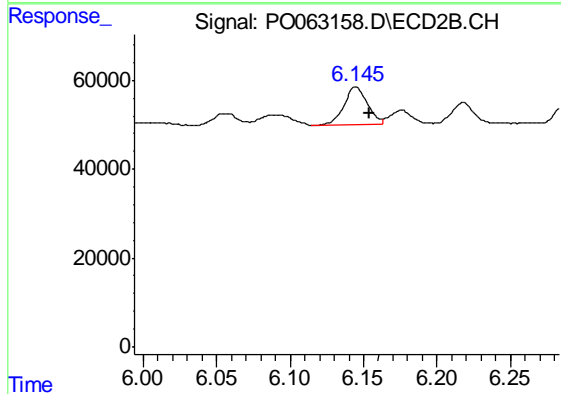
#31 AR-1260-1

R.T.: 5.959 min
 Delta R.T.: -0.009 min
 Response: 120467
 Conc: 56.70 ng/ml



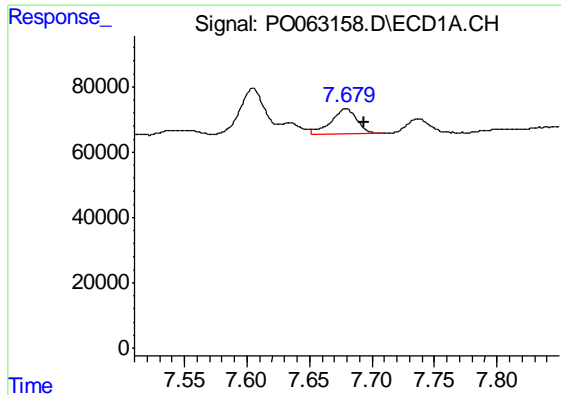
#32 AR-1260-2

R.T.: 7.319 min
 Delta R.T.: -0.017 min
 Response: 199272
 Conc: 58.09 ng/ml m



#32 AR-1260-2

R.T.: 6.145 min
 Delta R.T.: -0.009 min
 Response: 94907
 Conc: 37.40 ng/ml



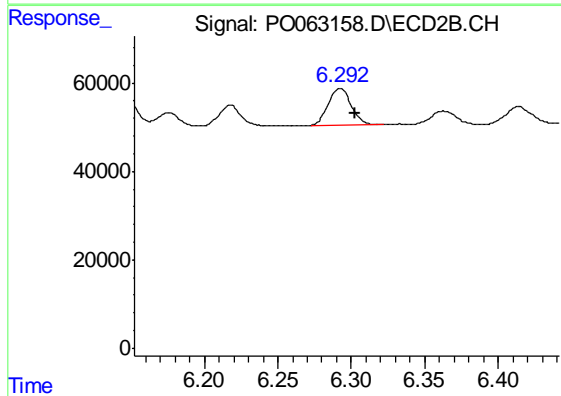
#33 AR-1260-3

R.T.: 7.679 min
 Delta R.T.: -0.014 min
 Response: 112376
 Conc: 42.47 ng/ml

Instrument :
 ECD_O
 ClientSampleId :
 181-50-(0-2)

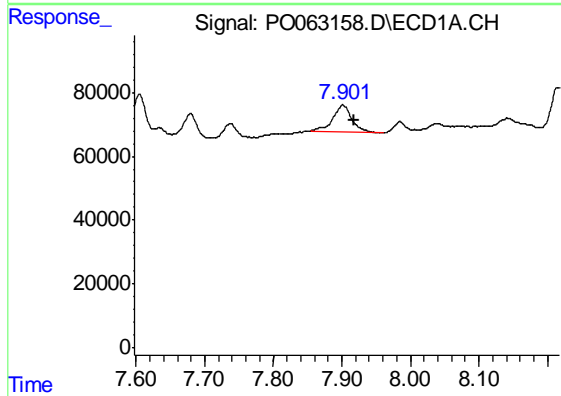
Manual Integrations
 APPROVED

Ankita
 10/28/2019 10:49:02 AM



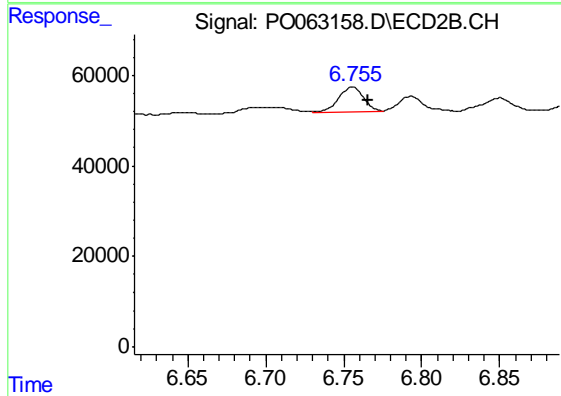
#33 AR-1260-3

R.T.: 6.292 min
 Delta R.T.: -0.011 min
 Response: 90611
 Conc: 40.13 ng/ml



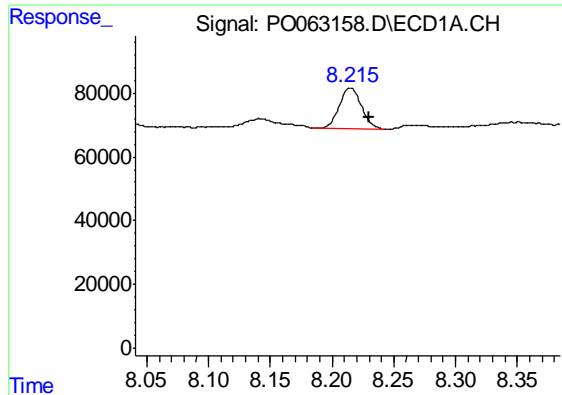
#34 AR-1260-4

R.T.: 7.901 min
 Delta R.T.: -0.017 min
 Response: 160419
 Conc: 57.35 ng/ml



#34 AR-1260-4

R.T.: 6.755 min
 Delta R.T.: -0.010 min
 Response: 63261
 Conc: 36.03 ng/ml



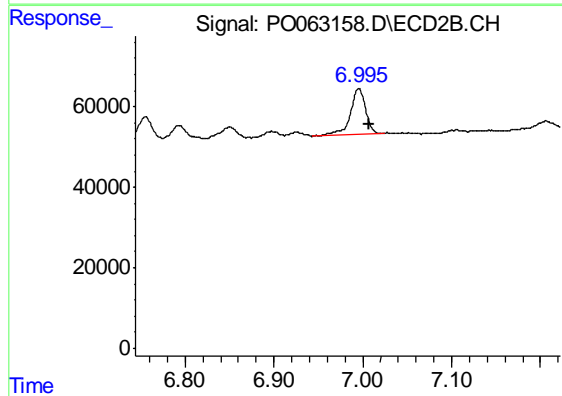
#35 AR-1260-5

R.T.: 8.215 min
Delta R.T.: -0.015 min
Response: 157789
Conc: 30.14 ng/ml

Instrument :
ECD_O
ClientSampleId :
181-50-(0-2)

Manual Integrations
APPROVED

Ankita
10/28/2019 10:49:02 AM



#35 AR-1260-5

R.T.: 6.996 min
Delta R.T.: -0.011 min
Response: 140009
Conc: 38.86 ng/ml