

Data Path : Z:\pestpcbsrv\HPCHEM1\ECD_0\Data\P0102919\
 Data File : P0063228.D
 Signal(s) : Signal #1: ECD1A.CH Signal #2: ECD2B.CH
 Acq On : 29 Oct 2019 14:41
 Operator : HP/AJ
 Sample : AR1254ICC500
 Misc :
 ALS Vial : 13 Sample Multiplier: 1

Instrument :
 ECD_0
ClientSampleId :
 AR1254ICC500

Integration File signal 1: autoint1.e
 Integration File signal 2: autoint2.e
 Quant Time: Oct 30 02:07:07 2019
 Quant Method : Z:\pestpcbsrv\HPCHEM1\ECD_0\methods\P0102919.M
 Quant Title : GC EXTRACTABLES
 QLast Update : Wed Oct 30 02:06:45 2019
 Response via : Initial Calibration
 Integrator: ChemStation 6890 Scale Mode: Small noise peaks clipped

Volume Inj. : 2 µl
 Signal #1 Phase : ZB-MR1 Signal #2 Phase: ZB-MR2
 Signal #1 Info : 30Mx0.32mmx 0.50µ Signal #2 Info : 30M x 0.32mm x 0.25µm

Compound	RT#1	RT#2	Resp#1	Resp#2	ng/ml	ng/ml

System Monitoring Compounds						
1) SA Tetrachlo...	4.316	3.478	2638260	2515401	50.000	50.000
2) SA Decachlor...	9.933	8.321	2667650	2009926	50.000	50.000
Target Compounds						
26) L6 AR-1254-1	6.323	5.296	1271208	1506145	500.000	500.000
27) L6 AR-1254-2	6.539	5.440	2022508	1348501	500.000	500.000
28) L6 AR-1254-3	6.904	5.832	2128204	2146605	500.000	500.000
29) L6 AR-1254-4	7.189	6.056	1692396	1424823	500.000	500.000
30) L6 AR-1254-5	7.606	6.464	1658504	1863823	500.000	500.000

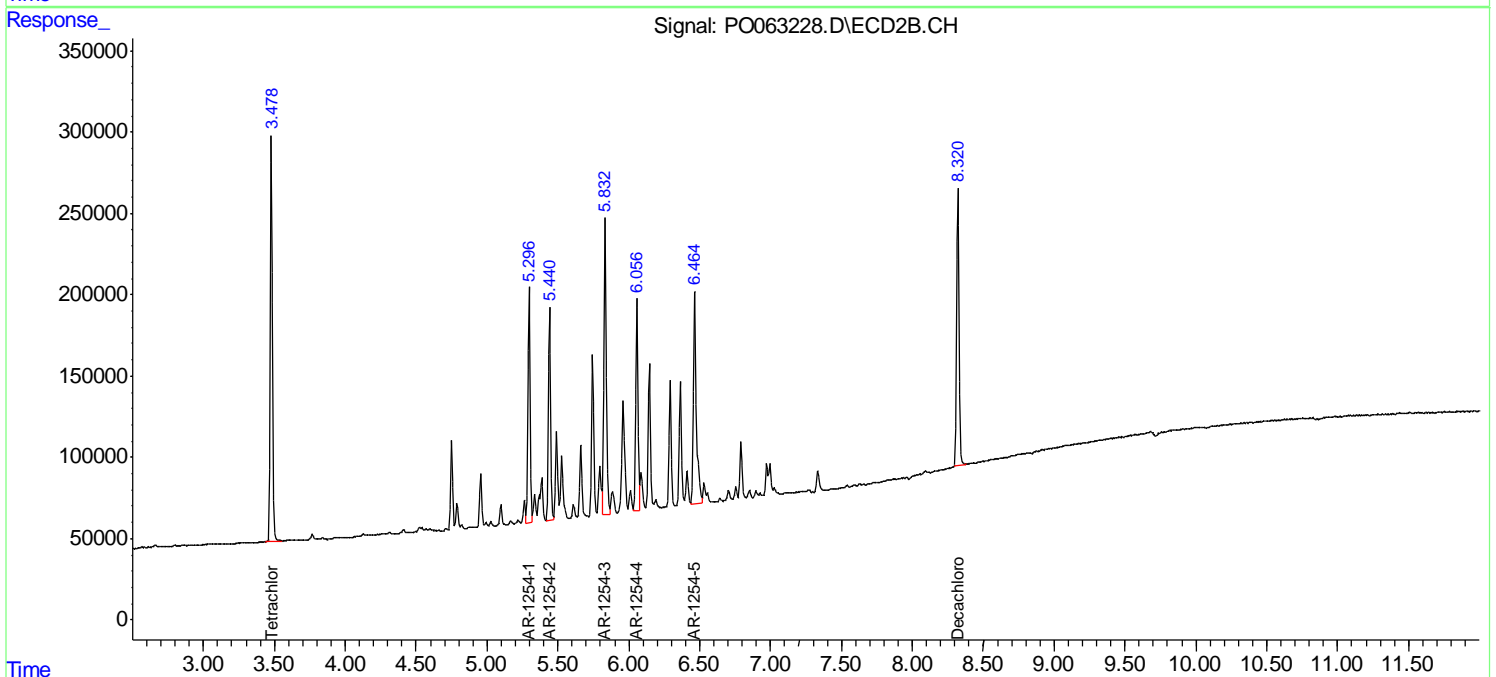
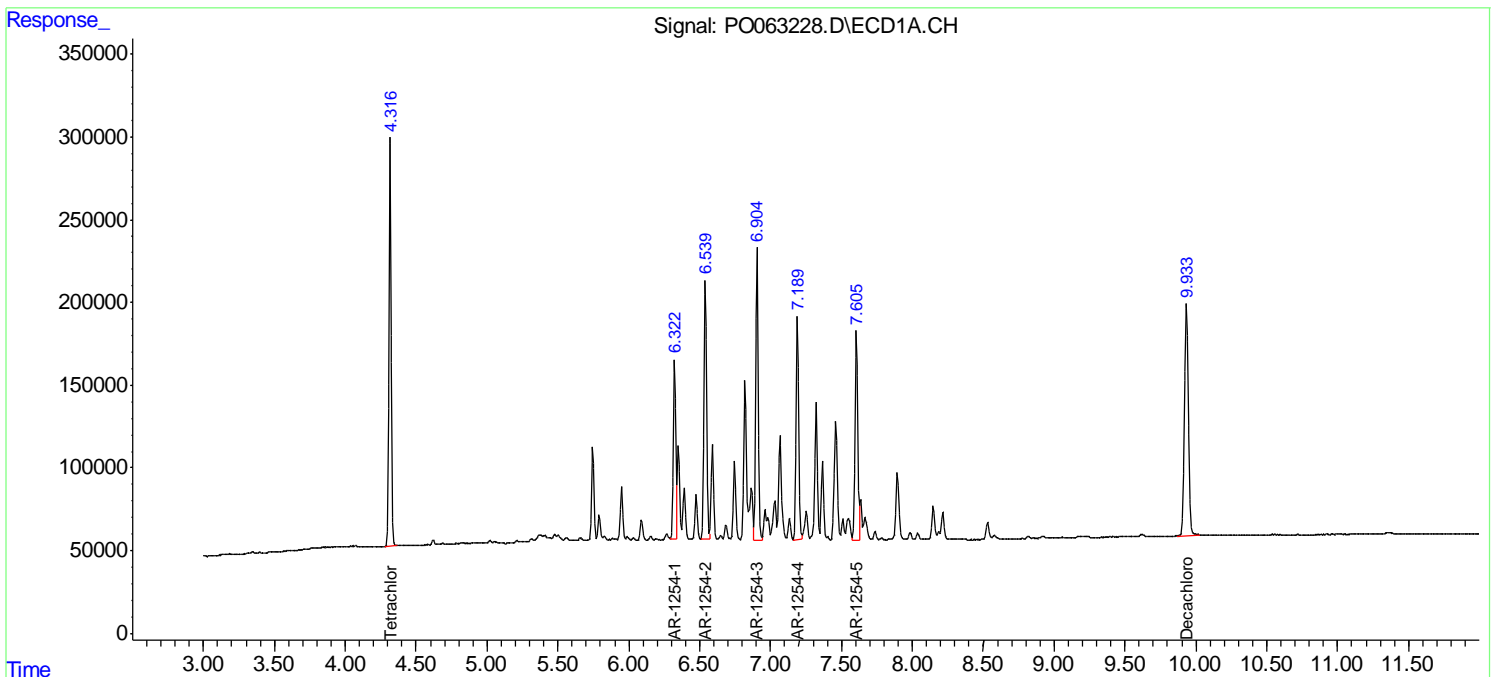
(f)=RT Delta > 1/2 Window (#)=Amounts differ by > 25% (m)=manual int.

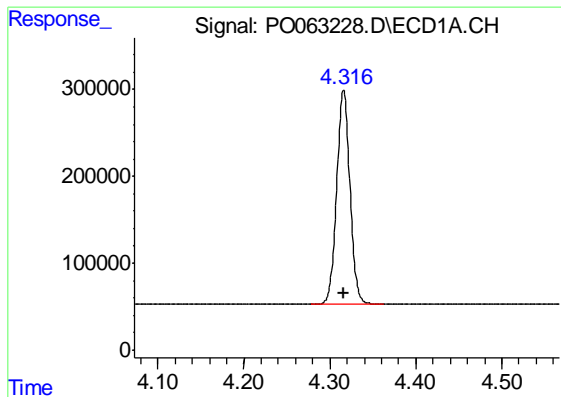
Data Path : Z:\pestpcbsrv\HPCHEM1\ECD_O\Data\PO102919\
 Data File : PO063228.D
 Signal(s) : Signal #1: ECD1A.CH Signal #2: ECD2B.CH
 Acq On : 29 Oct 2019 14:41
 Operator : HP/AJ
 Sample : AR1254ICC500
 Misc :
 ALS Vial : 13 Sample Multiplier: 1

Instrument :
 ECD_O
 ClientSampleId :
 AR1254ICC500

Integration File signal 1: autoint1.e
 Integration File signal 2: autoint2.e
 Quant Time: Oct 30 02:07:07 2019
 Quant Method : Z:\pestpcbsrv\HPCHEM1\ECD_O\methods\PO102919.M
 Quant Title : GC EXTRACTABLES
 QLast Update : Wed Oct 30 02:06:45 2019
 Response via : Initial Calibration
 Integrator: ChemStation 6890 Scale Mode: Small noise peaks clipped

Volume Inj. : 2 µl
 Signal #1 Phase : ZB-MR1 Signal #2 Phase: ZB-MR2
 Signal #1 Info : 30Mx0.32mmx 0.50µ Signal #2 Info : 30M x 0.32mm x 0.25µm

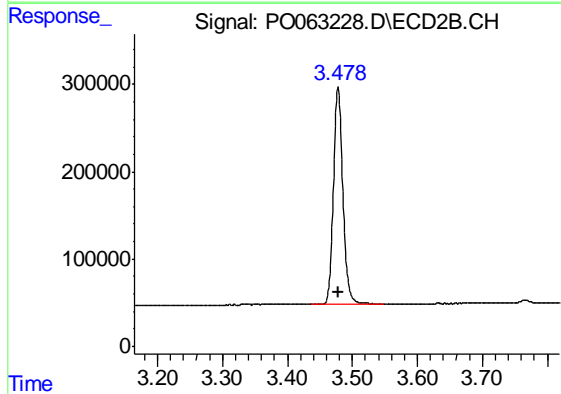




#1 Tetrachloro-m-xylene

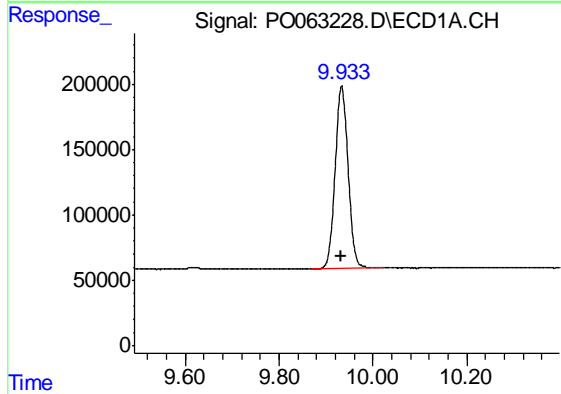
R.T.: 4.316 min
 Delta R.T.: 0.000 min
 Response: 2638260
 Conc: 50.00 ng/ml

Instrument :
 ECD_O
 ClientSampleId :
 AR1254ICC500



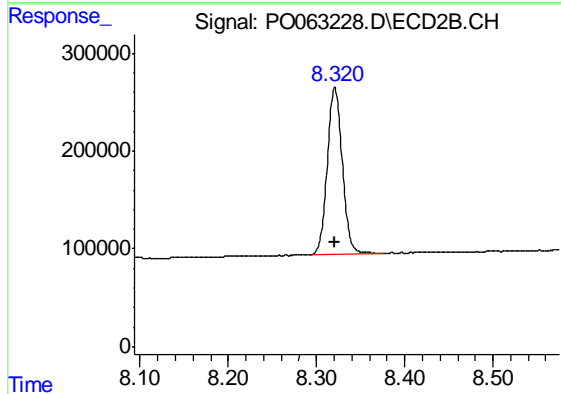
#1 Tetrachloro-m-xylene

R.T.: 3.478 min
 Delta R.T.: 0.000 min
 Response: 2515401
 Conc: 50.00 ng/ml



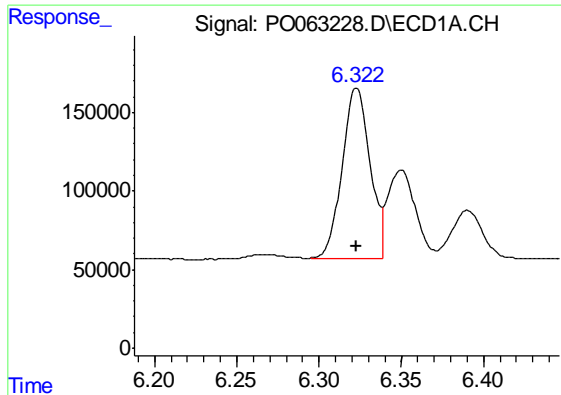
#2 Decachlorobiphenyl

R.T.: 9.933 min
 Delta R.T.: 0.000 min
 Response: 2667650
 Conc: 50.00 ng/ml



#2 Decachlorobiphenyl

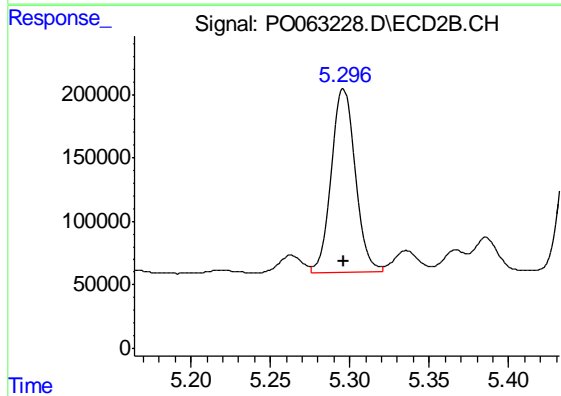
R.T.: 8.321 min
 Delta R.T.: 0.000 min
 Response: 2009926
 Conc: 50.00 ng/ml



#26 AR-1254-1

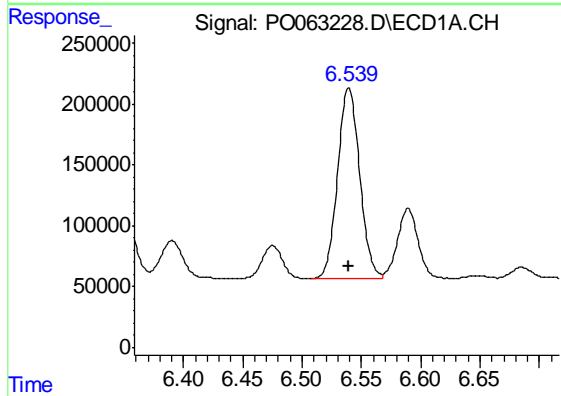
R.T.: 6.323 min
 Delta R.T.: 0.000 min
 Response: 1271208
 Conc: 500.00 ng/ml

Instrument :
 ECD_O
 ClientSampleId :
 AR1254ICC500



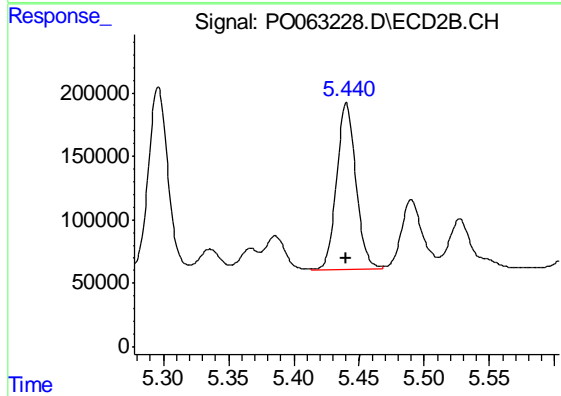
#26 AR-1254-1

R.T.: 5.296 min
 Delta R.T.: 0.000 min
 Response: 1506145
 Conc: 500.00 ng/ml



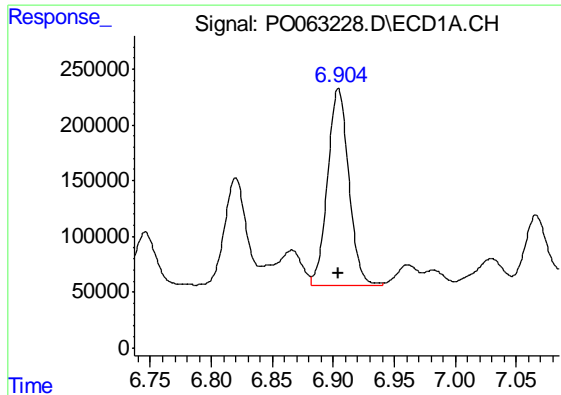
#27 AR-1254-2

R.T.: 6.539 min
 Delta R.T.: 0.000 min
 Response: 2022508
 Conc: 500.00 ng/ml



#27 AR-1254-2

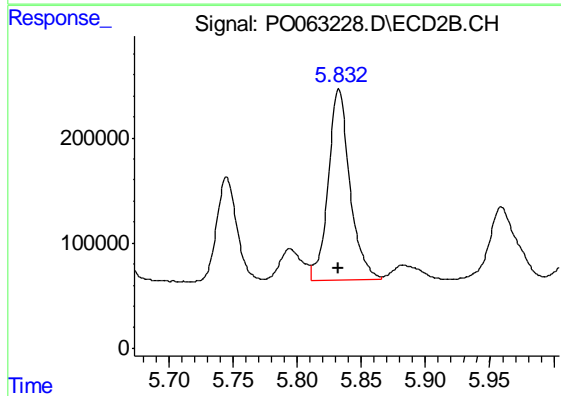
R.T.: 5.440 min
 Delta R.T.: 0.000 min
 Response: 1348501
 Conc: 500.00 ng/ml



#28 AR-1254-3

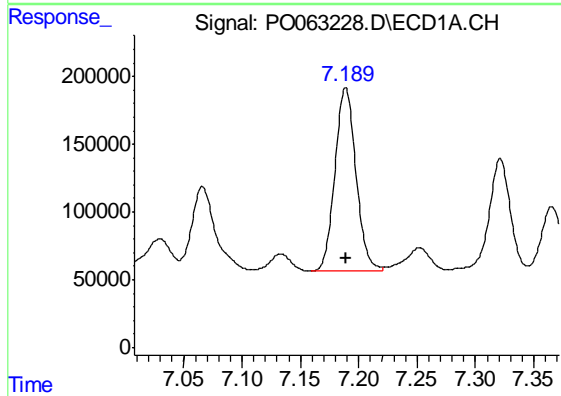
R.T.: 6.904 min
Delta R.T.: 0.000 min
Response: 2128204
Conc: 500.00 ng/ml

Instrument :
ECD_O
ClientSampleId :
AR1254ICC500



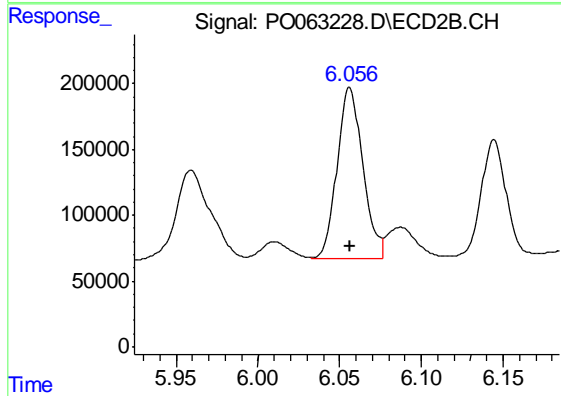
#28 AR-1254-3

R.T.: 5.832 min
Delta R.T.: 0.000 min
Response: 2146605
Conc: 500.00 ng/ml



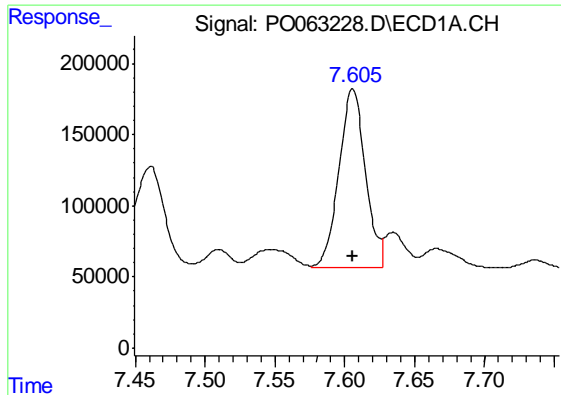
#29 AR-1254-4

R.T.: 7.189 min
Delta R.T.: 0.000 min
Response: 1692396
Conc: 500.00 ng/ml



#29 AR-1254-4

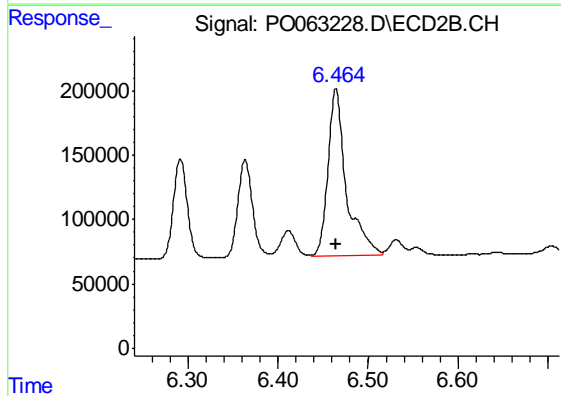
R.T.: 6.056 min
Delta R.T.: 0.000 min
Response: 1424823
Conc: 500.00 ng/ml



#30 AR-1254-5

R.T.: 7.606 min
Delta R.T.: 0.000 min
Response: 1658504
Conc: 500.00 ng/ml

Instrument :
ECD_O
ClientSampleId :
AR1254ICC500



#30 AR-1254-5

R.T.: 6.464 min
Delta R.T.: 0.000 min
Response: 1863823
Conc: 500.00 ng/ml