

Data Path : Z:\pestpcbsrv\HPCHEM1\ECD_O\Data\PO102919\
 Data File : P0063267.D
 Signal(s) : Signal #1: ECD1A.CH Signal #2: ECD2B.CH
 Acq On : 30 Oct 2019 2:16
 Operator : HP/AJ
 Sample : K5334-01 10X
 Misc :
 ALS Vial : 48 Sample Multiplier: 1

Instrument :
 ECD_O
ClientSampleId :
 S-1-PIT-SW-CORNER

Manual Integrations
APPROVED
 Ankita
 10/30/2019 1:59:44 PM

Integration File signal 1: autoint1.e
 Integration File signal 2: autoint2.e
 Quant Time: Oct 30 09:14:45 2019
 Quant Method : Z:\pestpcbsrv\HPCHEM1\ECD_O\methods\PO102919.M
 Quant Title : GC EXTRACTABLES
 QLast Update : Wed Oct 30 02:25:39 2019
 Response via : Initial Calibration
 Integrator: ChemStation 6890 Scale Mode: Small noise peaks clipped

Volume Inj. : 2 µl
 Signal #1 Phase : ZB-MR1 Signal #2 Phase: ZB-MR2
 Signal #1 Info : 30Mx0.32mmx 0.50µ Signal #2 Info : 30M x 0.32mm x 0.25µm

Compound	RT#1	RT#2	Resp#1	Resp#2	ng/ml	ng/ml

System Monitoring Compounds						
1) SA Tetrachlo...	4.318	3.486	177211	106133	3.041m	1.943 #
2) SA Decachlor...	9.934	8.322	147999	75586	2.544	1.768 #

Target Compounds

(f)=RT Delta > 1/2 Window (#)=Amounts differ by > 25% (m)=manual int.

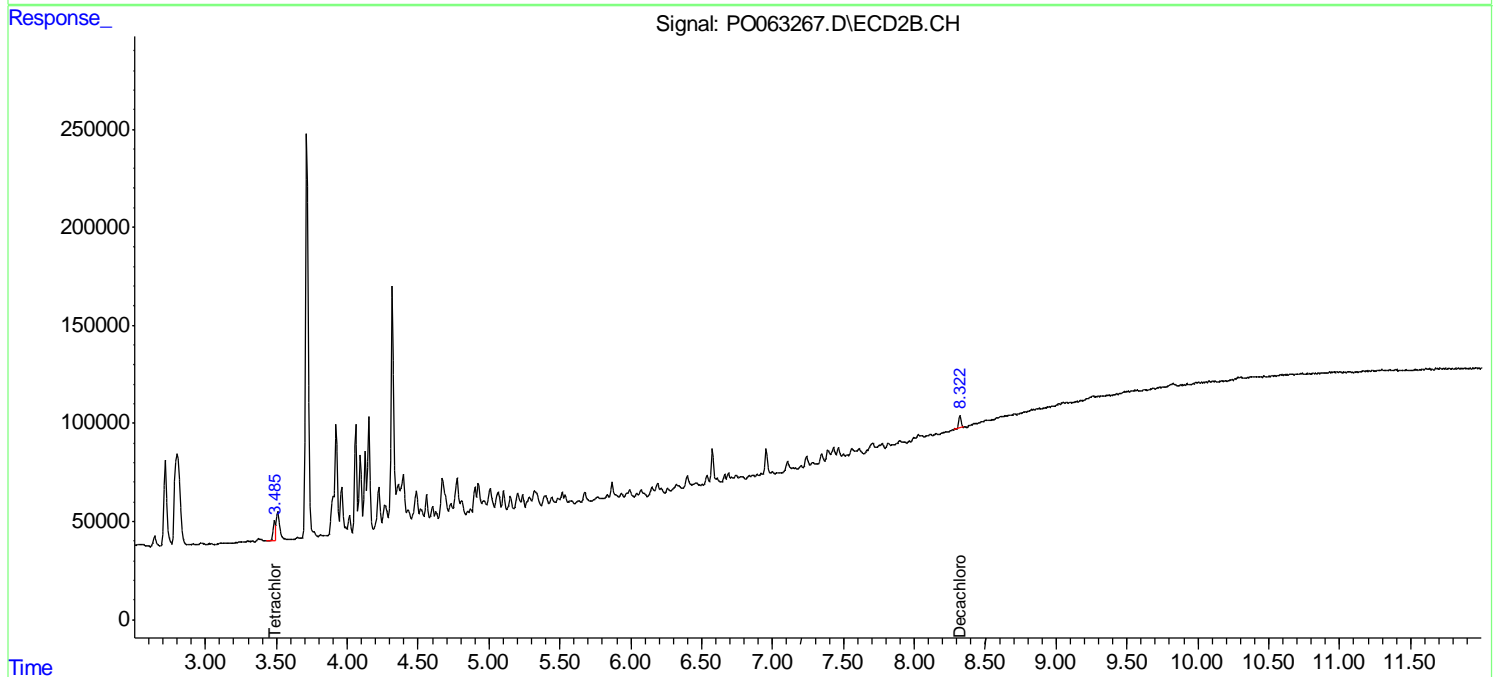
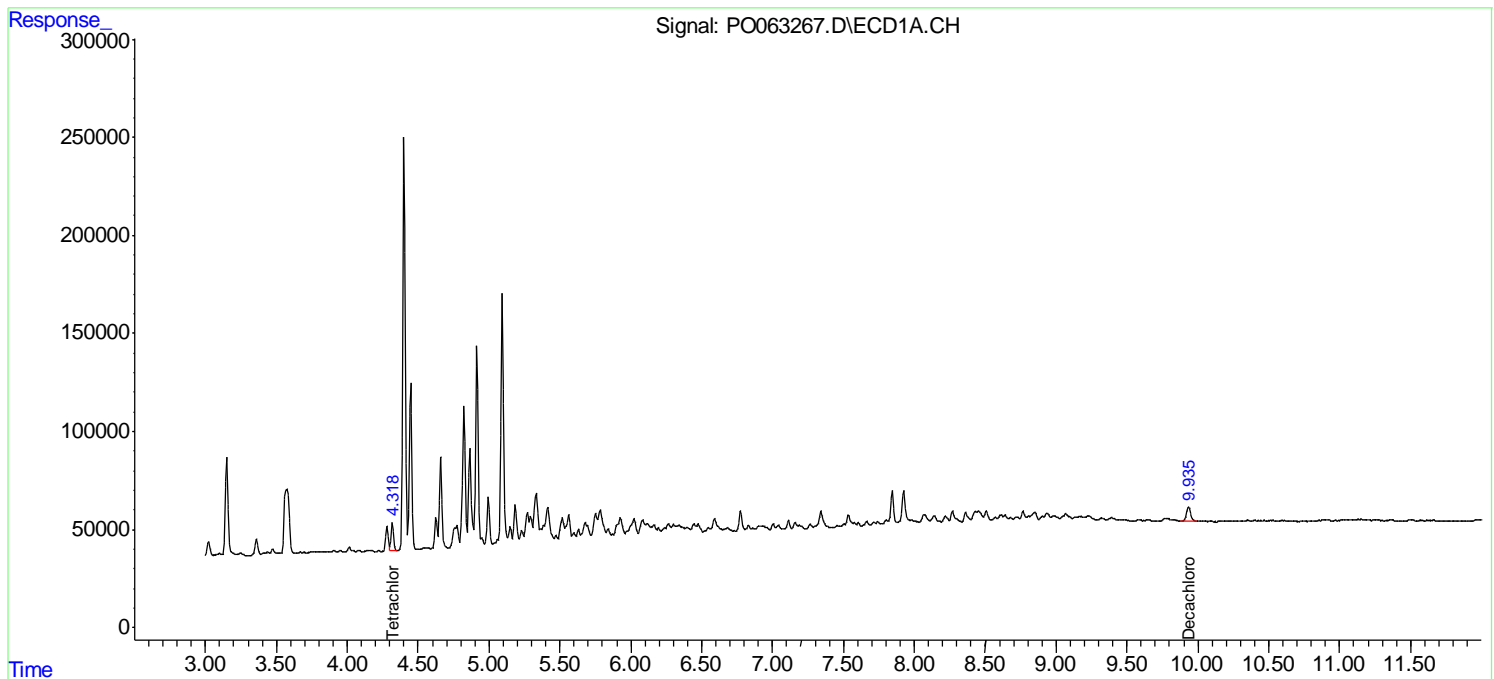
Data Path : Z:\pestpcbsrv\HPCHEM1\ECD_O\Data\PO102919\
 Data File : PO063267.D
 Signal(s) : Signal #1: ECD1A.CH Signal #2: ECD2B.CH
 Acq On : 30 Oct 2019 2:16
 Operator : HP/AJ
 Sample : K5334-01 10X
 Misc :
 ALS Vial : 48 Sample Multiplier: 1

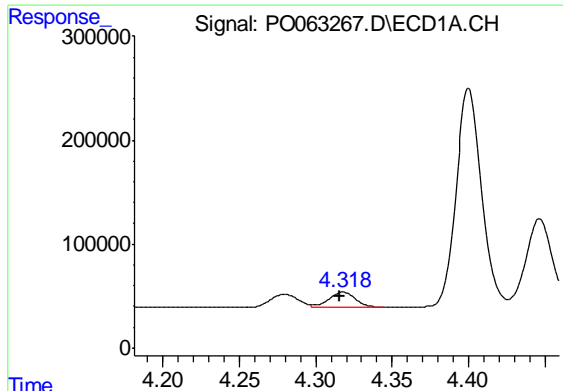
Instrument :
 ECD_O
ClientSampled :
 S-1-PIT-SW-CORNER

Manual Integrations
APPROVED
 Ankita
 10/30/2019 1:59:44 PM

Integration File signal 1: autoint1.e
 Integration File signal 2: autoint2.e
 Quant Time: Oct 30 09:14:45 2019
 Quant Method : Z:\pestpcbsrv\HPCHEM1\ECD_O\methods\PO102919.M
 Quant Title : GC EXTRACTABLES
 QLast Update : Wed Oct 30 02:25:39 2019
 Response via : Initial Calibration
 Integrator: ChemStation 6890 Scale Mode: Small noise peaks clipped

Volume Inj. : 2 µl
 Signal #1 Phase : ZB-MR1 Signal #2 Phase: ZB-MR2
 Signal #1 Info : 30Mx0.32mmx 0.50µm Signal #2 Info : 30M x 0.32mm x 0.25µm

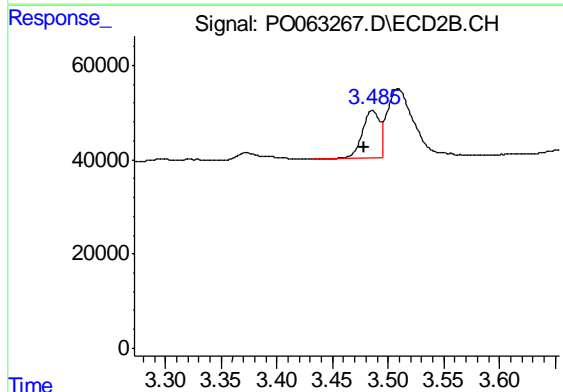




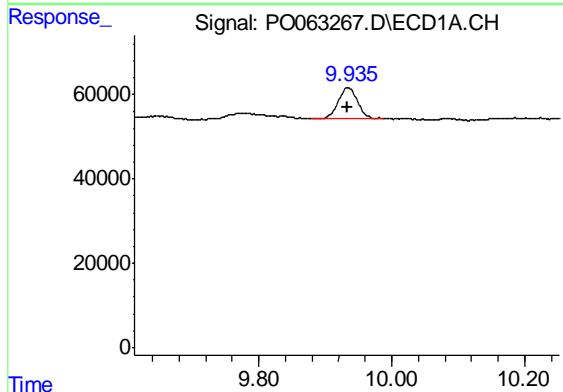
#1 Tetrachloro-m-xylene
 R.T.: 4.318 min
 Delta R.T.: 0.002 min
 Response: 177211
 Conc: 3.04 ng/ml m

Instrument :
 ECD_O
ClientSampleId :
 S-1-PIT-SW-CORNER

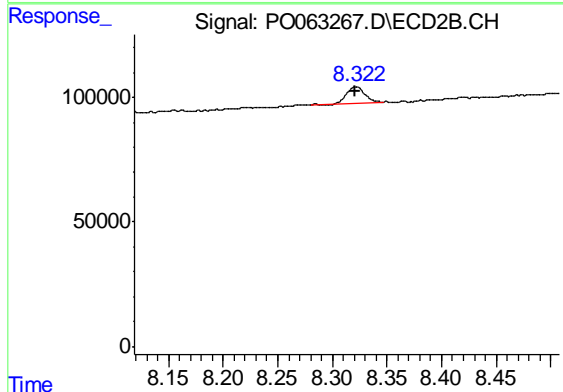
Manual Integrations
APPROVED
 Ankita
 10/30/2019 1:59:44 PM



#1 Tetrachloro-m-xylene
 R.T.: 3.486 min
 Delta R.T.: 0.008 min
 Response: 106133
 Conc: 1.94 ng/ml



#2 Decachlorobiphenyl
 R.T.: 9.934 min
 Delta R.T.: 0.000 min
 Response: 147999
 Conc: 2.54 ng/ml



#2 Decachlorobiphenyl
 R.T.: 8.322 min
 Delta R.T.: 0.000 min
 Response: 75586
 Conc: 1.77 ng/ml