

Data Path : Z:\pestpcbsrv\HPCHEM1\ECD_O\Data\P0102919\
 Data File : P0063276.D
 Signal(s) : Signal #1: ECD1A.CH Signal #2: ECD2B.CH
 Acq On : 30 Oct 2019 4:45
 Operator : HP/AJ
 Sample : AR1660CCC500
 Misc :
 ALS Vial : 3 Sample Multiplier: 1

Instrument :
 ECD_O
 ClientSampleId :
 AR1660CCC500

Integration File signal 1: autoint1.e
 Integration File signal 2: autoint2.e
 Quant Time: Oct 30 10:34:43 2019
 Quant Method : Z:\pestpcbsrv\HPCHEM1\ECD_O\methods\P0102919.M
 Quant Title : GC EXTRACTABLES
 QLast Update : Wed Oct 30 02:25:39 2019
 Response via : Initial Calibration
 Integrator: ChemStation 6890 Scale Mode: Small noise peaks clipped

Volume Inj. : 2 µl
 Signal #1 Phase : ZB-MR1 Signal #2 Phase: ZB-MR2
 Signal #1 Info : 30Mx0.32mmx 0.50µ Signal #2 Info : 30M x 0.32mm x 0.25µm

Compound	RT#1	RT#2	Resp#1	Resp#2	ng/ml	ng/ml

System Monitoring Compounds						
1) SA Tetrachlo...	4.317	3.481	3547659	3365980	60.871	61.633
2) SA Decachlor...	9.933	8.321	2601996	1933918	44.720	45.235
Target Compounds						
3) L1 AR-1016-1	5.476	4.523	1036870	909289	474.285	485.343
4) L1 AR-1016-2	5.498	4.540	1522330	1407571	485.933	516.060
5) L1 AR-1016-3	5.559	4.709	888914	687983	474.474	495.709
6) L1 AR-1016-4	5.657	4.751	724639	535854	458.899	479.782
7) L1 AR-1016-5	5.948	4.956	669862	681594	439.718	452.429
31) L7 AR-1260-1	7.065	5.959	1207827	1221512	389.477	442.280
32) L7 AR-1260-2	7.321	6.145	1486312	1726035	368.177	449.855
33) L7 AR-1260-3	7.678	6.293	1187985	1336615	369.919	425.994
34) L7 AR-1260-4	7.903	6.755	1159145	1050471	363.100	414.894
35) L7 AR-1260-5	8.214	6.996	2512624	2734887	428.424	448.680

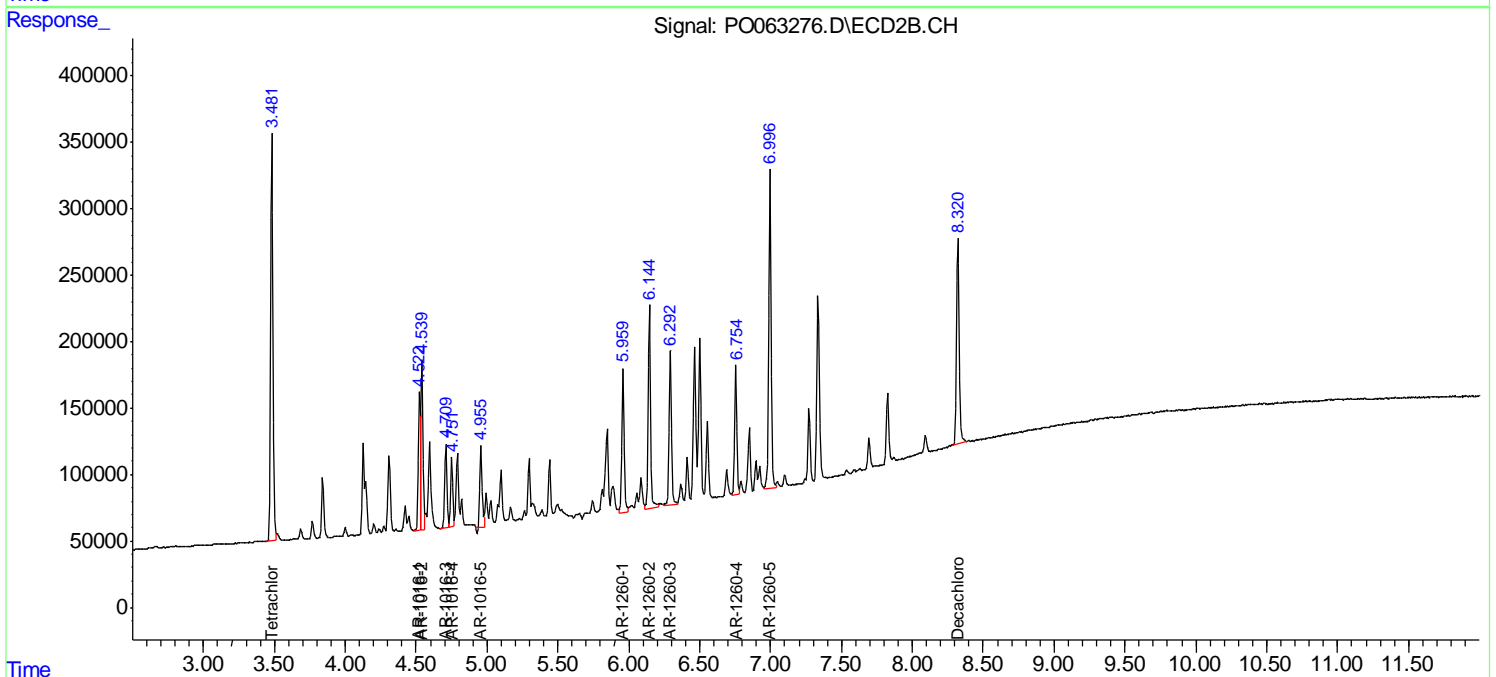
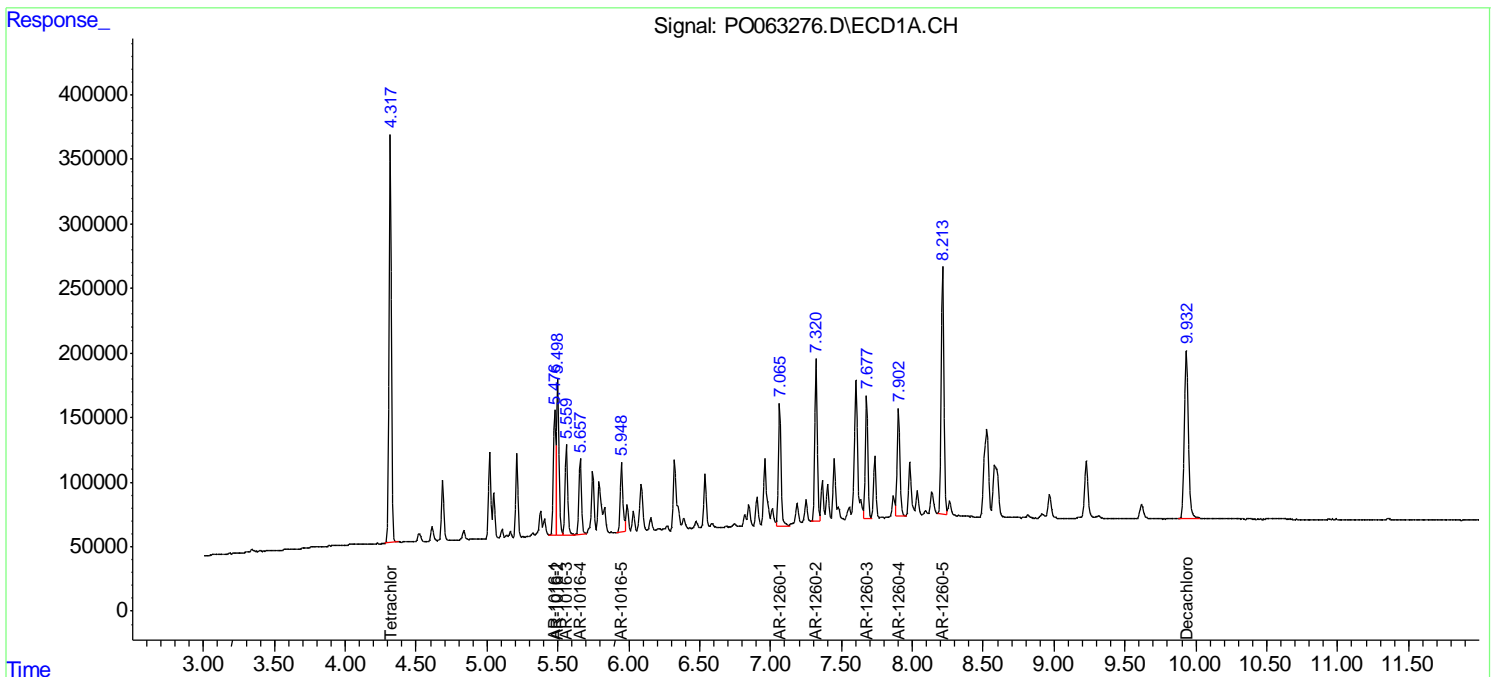
(f)=RT Delta > 1/2 Window (#)=Amounts differ by > 25% (m)=manual int.

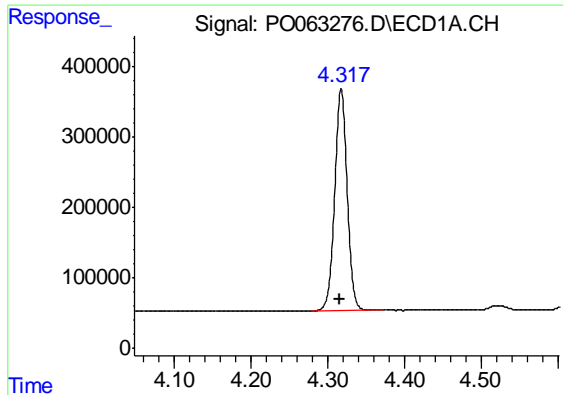
Data Path : Z:\pestpcbsrv\HPCHEM1\ECD_O\Data\PO102919\
 Data File : PO063276.D
 Signal(s) : Signal #1: ECD1A.CH Signal #2: ECD2B.CH
 Acq On : 30 Oct 2019 4:45
 Operator : HP/AJ
 Sample : AR1660CCC500
 Misc :
 ALS Vial : 3 Sample Multiplier: 1

Instrument :
 ECD_O
 ClientSampled :
 AR1660CCC500

Integration File signal 1: autoint1.e
 Integration File signal 2: autoint2.e
 Quant Time: Oct 30 10:34:43 2019
 Quant Method : Z:\pestpcbsrv\HPCHEM1\ECD_O\methods\PO102919.M
 Quant Title : GC EXTRACTABLES
 QLast Update : Wed Oct 30 02:25:39 2019
 Response via : Initial Calibration
 Integrator: ChemStation 6890 Scale Mode: Small noise peaks clipped

Volume Inj. : 2 µl
 Signal #1 Phase : ZB-MR1 Signal #2 Phase: ZB-MR2
 Signal #1 Info : 30Mx0.32mmx 0.50µ Signal #2 Info : 30M x 0.32mm x 0.25µm

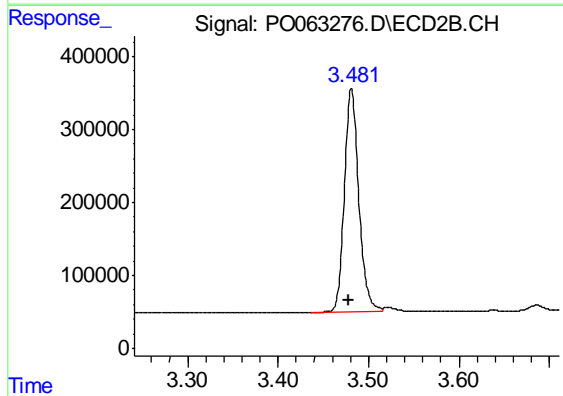




#1 Tetrachloro-m-xylene

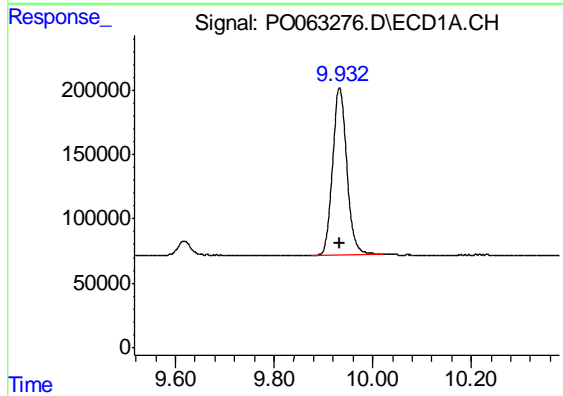
R.T.: 4.317 min
 Delta R.T.: 0.001 min
 Response: 3547659
 Conc: 60.87 ng/ml

Instrument :
 ECD_O
 ClientSampleId :
 AR1660CCC500



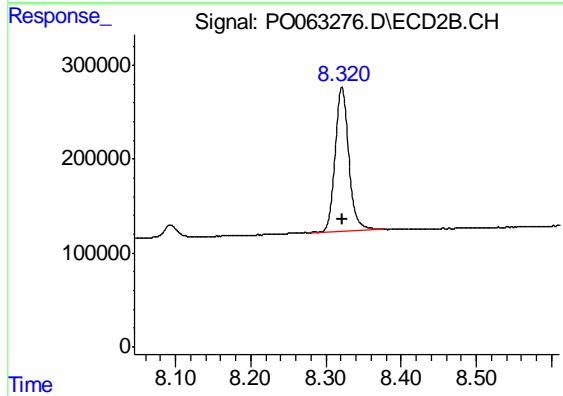
#1 Tetrachloro-m-xylene

R.T.: 3.481 min
 Delta R.T.: 0.003 min
 Response: 3365980
 Conc: 61.63 ng/ml



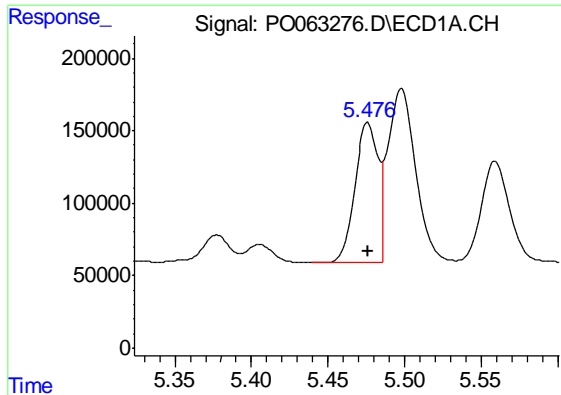
#2 Decachlorobiphenyl

R.T.: 9.933 min
 Delta R.T.: 0.000 min
 Response: 2601996
 Conc: 44.72 ng/ml



#2 Decachlorobiphenyl

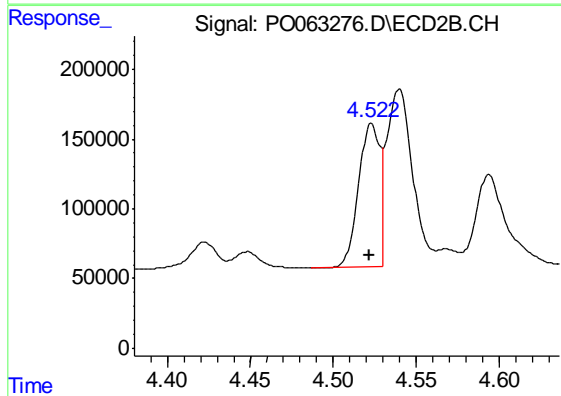
R.T.: 8.321 min
 Delta R.T.: 0.000 min
 Response: 1933918
 Conc: 45.24 ng/ml



#3 AR-1016-1

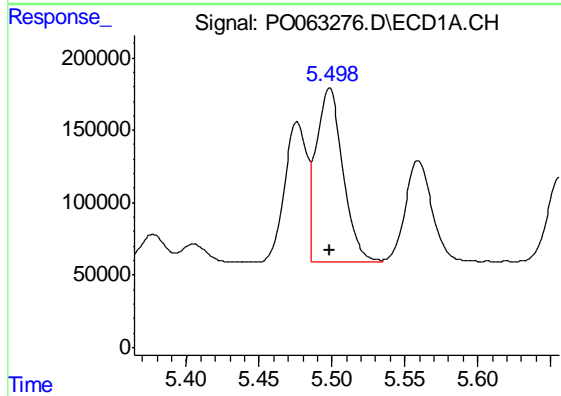
R.T.: 5.476 min
 Delta R.T.: 0.000 min
 Response: 1036870
 Conc: 474.29 ng/ml

Instrument :
 ECD_O
 ClientSampleId :
 AR1660CCC500



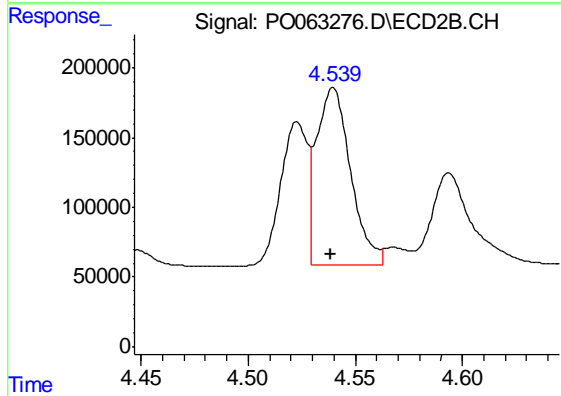
#3 AR-1016-1

R.T.: 4.523 min
 Delta R.T.: 0.001 min
 Response: 909289
 Conc: 485.34 ng/ml



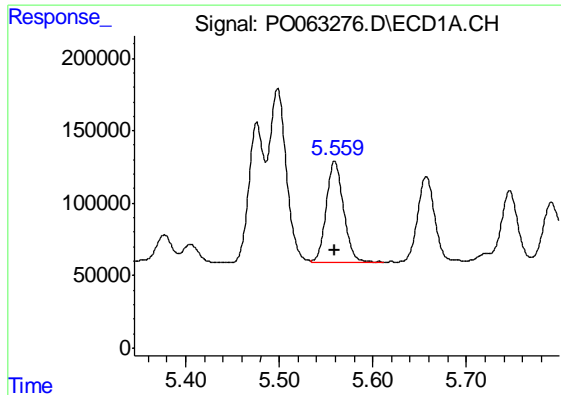
#4 AR-1016-2

R.T.: 5.498 min
 Delta R.T.: 0.000 min
 Response: 1522330
 Conc: 485.93 ng/ml



#4 AR-1016-2

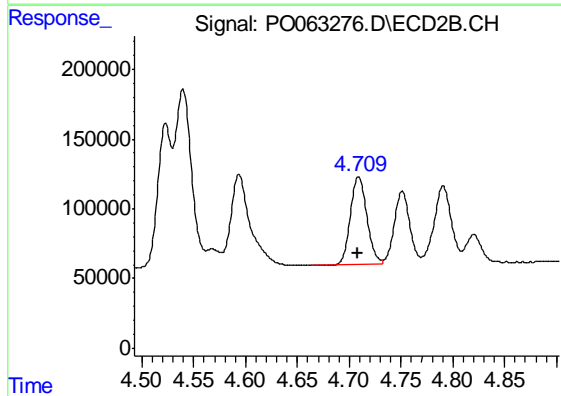
R.T.: 4.540 min
 Delta R.T.: 0.001 min
 Response: 1407571
 Conc: 516.06 ng/ml



#5 AR-1016-3

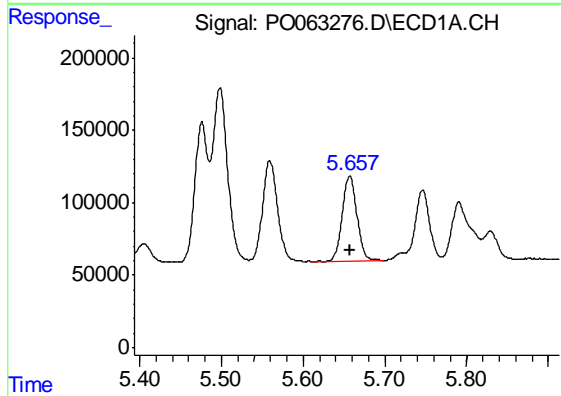
R.T.: 5.559 min
 Delta R.T.: 0.000 min
 Response: 888914
 Conc: 474.47 ng/ml

Instrument :
 ECD_O
 ClientSampleId :
 AR1660CCC500



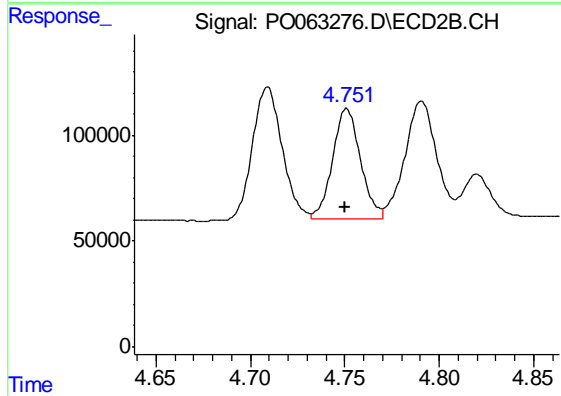
#5 AR-1016-3

R.T.: 4.709 min
 Delta R.T.: 0.000 min
 Response: 687983
 Conc: 495.71 ng/ml



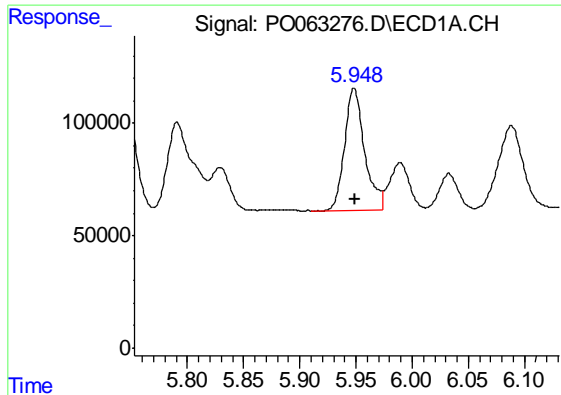
#6 AR-1016-4

R.T.: 5.657 min
 Delta R.T.: 0.000 min
 Response: 724639
 Conc: 458.90 ng/ml



#6 AR-1016-4

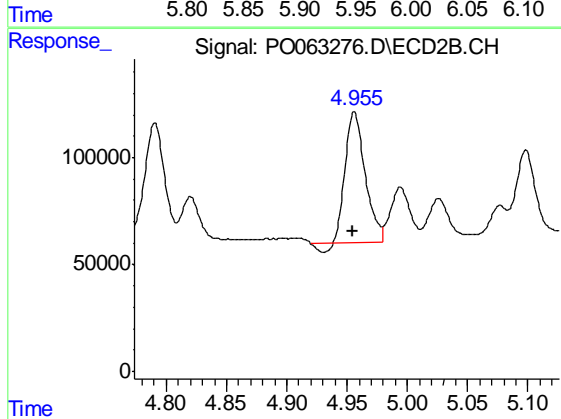
R.T.: 4.751 min
 Delta R.T.: 0.000 min
 Response: 535854
 Conc: 479.78 ng/ml



#7 AR-1016-5

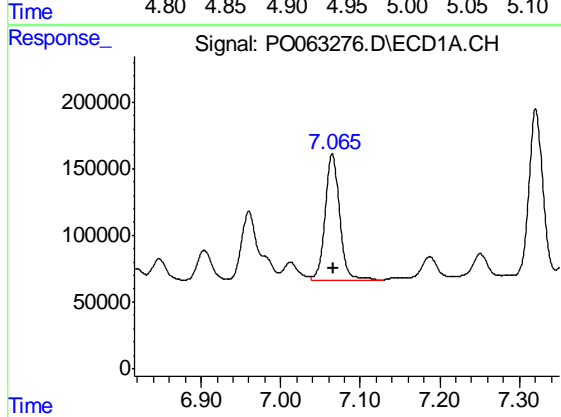
R.T.: 5.948 min
Delta R.T.: 0.000 min
Response: 669862
Conc: 439.72 ng/ml

Instrument :
ECD_O
ClientSampleId :
AR1660CCC500



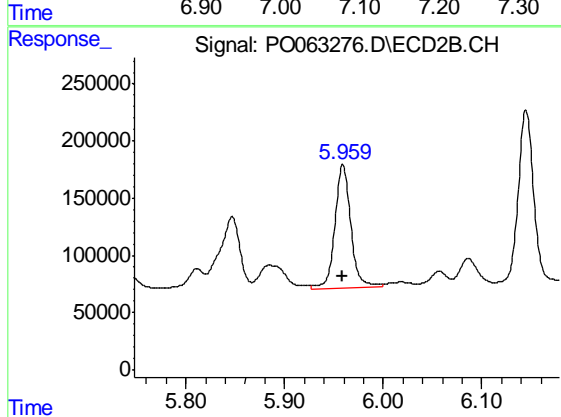
#7 AR-1016-5

R.T.: 4.956 min
Delta R.T.: 0.000 min
Response: 681594
Conc: 452.43 ng/ml



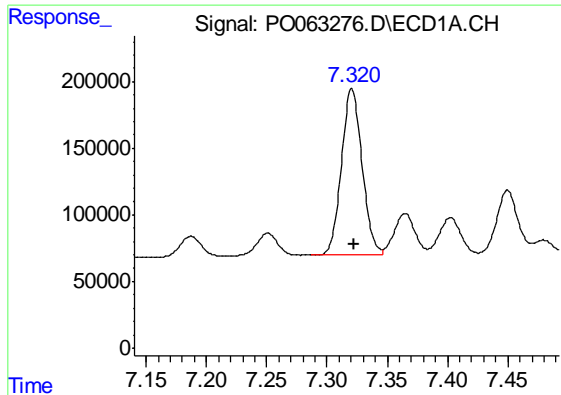
#31 AR-1260-1

R.T.: 7.065 min
Delta R.T.: -0.001 min
Response: 1207827
Conc: 389.48 ng/ml



#31 AR-1260-1

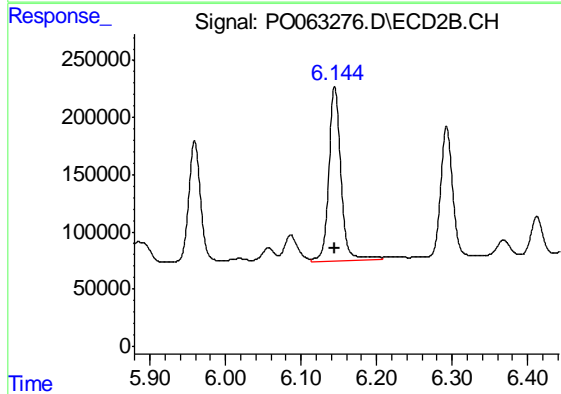
R.T.: 5.959 min
Delta R.T.: 0.000 min
Response: 1221512
Conc: 442.28 ng/ml



#32 AR-1260-2

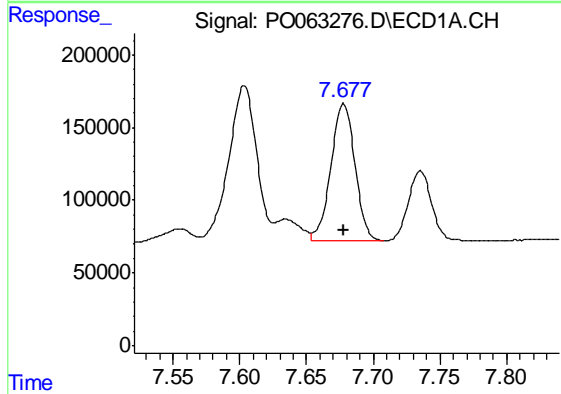
R.T.: 7.321 min
 Delta R.T.: -0.001 min
 Response: 1486312
 Conc: 368.18 ng/ml

Instrument :
 ECD_O
 ClientSampleId :
 AR1660CCC500



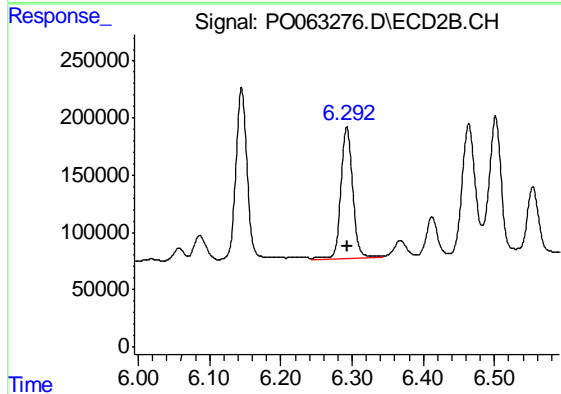
#32 AR-1260-2

R.T.: 6.145 min
 Delta R.T.: 0.000 min
 Response: 1726035
 Conc: 449.85 ng/ml



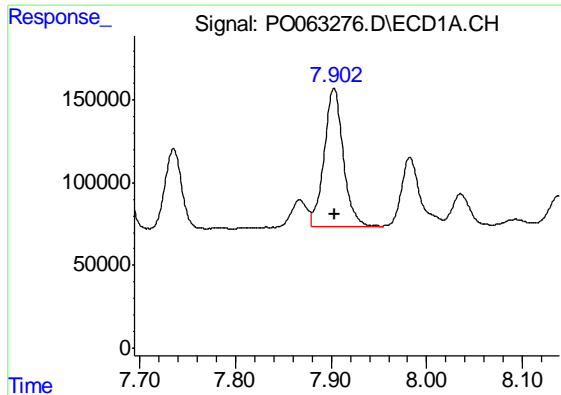
#33 AR-1260-3

R.T.: 7.678 min
 Delta R.T.: 0.000 min
 Response: 1187985
 Conc: 369.92 ng/ml



#33 AR-1260-3

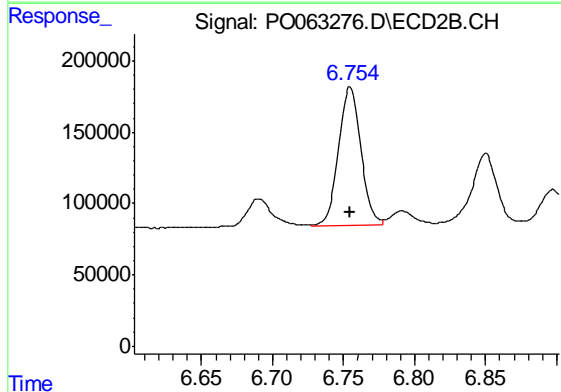
R.T.: 6.293 min
 Delta R.T.: 0.000 min
 Response: 1336615
 Conc: 425.99 ng/ml



#34 AR-1260-4

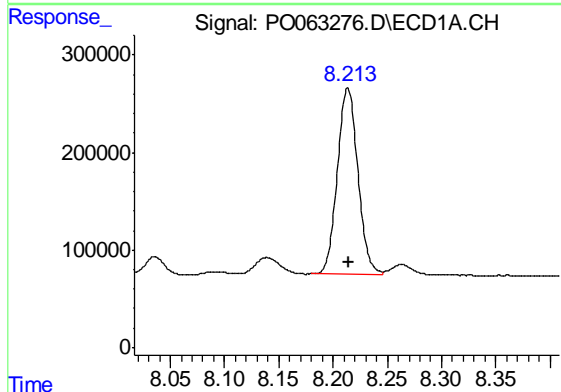
R.T.: 7.903 min
 Delta R.T.: 0.000 min
 Response: 1159145
 Conc: 363.10 ng/ml

Instrument :
 ECD_O
 ClientSampleId :
 AR1660CCC500



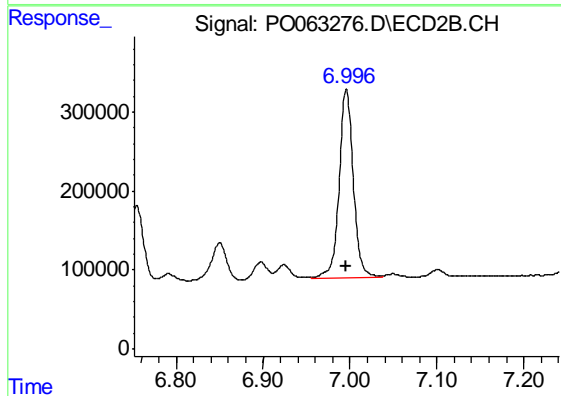
#34 AR-1260-4

R.T.: 6.755 min
 Delta R.T.: 0.000 min
 Response: 1050471
 Conc: 414.89 ng/ml



#35 AR-1260-5

R.T.: 8.214 min
 Delta R.T.: 0.000 min
 Response: 2512624
 Conc: 428.42 ng/ml



#35 AR-1260-5

R.T.: 6.996 min
 Delta R.T.: 0.000 min
 Response: 2734887
 Conc: 448.68 ng/ml