

Data Path : Z:\pestpcbsrv\HPCHEM1\ECD_0\Data\PO103018\
 Data File : PO050750.D
 Signal(s) : Signal #1: ECD1A.CH Signal #2: ECD2B.CH
 Acq On : 30 Oct 2018 11:58
 Operator : SM/SJ
 Sample : J5515-01
 Misc :
 ALS Vial : 13 Sample Multiplier: 1

Instrument :
 ECD_O
 ClientSampled :

Integration File signal 1: autoint1.e
 Integration File signal 2: autoint2.e
 Quant Time: Oct 30 13:20:59 2018
 Quant Method : Z:\pestpcbsrv\HPCHEM1\ECD_0\methods\PO102918.M
 Quant Title : GC EXTRACTABLES
 QLast Update : Tue Oct 30 07:48:38 2018
 Response via : Initial Calibration
 Integrator: ChemStation 6890 Scale Mode: Small noise peaks clipped

Volume Inj. : 2 µl
 Signal #1 Phase : ZB-MR1 Signal #2 Phase: ZB-MR2
 Signal #1 Info : 30Mx0.32mmx 0.50µ Signal #2 Info : 30M x 0.32mm x 0.25µm

Compound	RT#1	RT#2	Resp#1	Resp#2	ng/ml	ng/ml
System Monitoring Compounds						
1) SA Tetrachlo...	4.346	3.348	2894396	3590602	5.790	16.520 #
2) SA Decachlor...	10.029	8.098	3618573	2008434	11.642	7.852 #
Target Compounds						
3) L1 AR-1016-1	0.000	4.381	0	340877	N.D.	37.093 #
4) L1 AR-1016-2	0.000	4.381	0	340877	N.D.	21.998 #
5) L1 AR-1016-3	0.000	4.537	0	278079	N.D.	34.718 #
6) L1 AR-1016-4	0.000	4.588	0	283031	N.D.	46.515 #
7) L1 AR-1016-5	0.000	4.797	0	310660	N.D.	36.000 #
10) L2 AR-1221-3	4.753	3.702	34309329	13194068	2883.531	3085.165
11) L3 AR-1232-1	4.753	3.702	34309329	13194068	4008.028	3300.509
12) L3 AR-1232-2	0.000	4.381	0	340877	N.D.	71.259 #
13) L3 AR-1232-3	0.000	4.537	0	278079	N.D.	106.639 #
14) L3 AR-1232-4	0.000	4.626	0	152560	N.D.	68.435 #
15) L3 AR-1232-5	5.800	4.797	392021	310660	132.087	116.802
16) L4 AR-1242-1	0.000	4.381	0	340877	N.D.	58.082 #
17) L4 AR-1242-2	0.000	4.381	0	340877	N.D.	34.121 #
18) L4 AR-1242-3	0.000	4.537	0	278079	N.D.	55.069 #
19) L4 AR-1242-4	0.000	4.626	0	152560	N.D.	31.937 #
20) L4 AR-1242-5	6.446	5.122	526270	1461872	56.420	226.911 #
21) L5 AR-1248-1	0.000	4.381	0	340877	N.D.	73.887 #
22) L5 AR-1248-2	5.800	4.588	392021	283031	30.264	40.638 #
23) L5 AR-1248-3	0.000	4.626	0	152560	N.D.	21.825 #
24) L5 AR-1248-4	6.411	4.797	847135	310660	50.814	33.293 #
25) L5 AR-1248-5	6.446	5.165	526270	414336	33.711	43.094 #
26) L6 AR-1254-1	6.381	5.122	1530528	1461872	69.701	76.243
27) L6 AR-1254-2	6.597	5.265	5729119	2984580	169.450	171.929
28) L6 AR-1254-3	6.965	5.647	7357472	6187196	211.283	218.596
29) L6 AR-1254-4	7.248	5.869	8242258	4901847	356.346	277.330
30) L6 AR-1254-5	7.686	6.273	70147965	35273851	2857.095	1319.326 #
31) L7 AR-1260-1	7.126	5.773	3507817	4301632	136.354	208.052 #
32) L7 AR-1260-2	7.380	5.957	16467733	6907764	556.672	240.557 #
33) L7 AR-1260-3	7.686	6.100	70147965	2771508	3309.897	112.386 #
34) L7 AR-1260-4	7.954	6.556	6540395	1147167	285.820	55.619 #
35) L7 AR-1260-5	8.278	6.796	2644078	2077869	60.031	39.988 #
36) L8 AR-1262-1	7.686	6.315	70147965	5370881	2843.399	190.864 #
37) L8 AR-1262-2	8.278	6.796	2644078	2077869	67.558	46.255 #
38) L8 AR-1262-3	8.599	7.048	1844884	2166431	73.025	120.664 #
39) L8 AR-1262-4	8.599	7.130	1844884	2261887	94.000	76.884
40) L8 AR-1262-5	0.000	7.612	0	511324	N.D.	44.059 #
41) L9 AR-1268-1	8.599	7.048	1844884	2166431	36.567	39.335
42) L9 AR-1268-2	8.599	7.130	1844884	2261887	40.559	47.452
43) L9 AR-1268-3	0.000	7.335	0	40345	N.D.	0.937 #

Data Path : Z:\pestpcbsrv\HPCHEM1\ECD_0\Data\PO103018\
 Data File : PO050750.D
 Signal(s) : Signal #1: ECD1A.CH Signal #2: ECD2B.CH
 Acq On : 30 Oct 2018 11:58
 Operator : SM/SJ
 Sample : J5515-01
 Misc :
 ALS Vial : 13 Sample Multiplier: 1

Instrument :
 ECD_0
 ClientSampleId :

Integration File signal 1: autoint1.e
 Integration File signal 2: autoint2.e
 Quant Time: Oct 30 13:20:59 2018
 Quant Method : Z:\pestpcbsrv\HPCHEM1\ECD_0\methods\PO102918.M
 Quant Title : GC EXTRACTABLES
 QLast Update : Tue Oct 30 07:48:38 2018
 Response via : Initial Calibration
 Integrator: ChemStation 6890 Scale Mode: Small noise peaks clipped

Volume Inj. : 2 µl
 Signal #1 Phase : ZB-MR1 Signal #2 Phase: ZB-MR2
 Signal #1 Info : 30Mx0.32mmx 0.50µ Signal #2 Info : 30M x 0.32mm x 0.25µm

Compound	RT#1	RT#2	Resp#1	Resp#2	ng/ml	ng/ml
44) L9 AR-1268-4	0.000	7.612	0	511324	N.D.	36.600 #

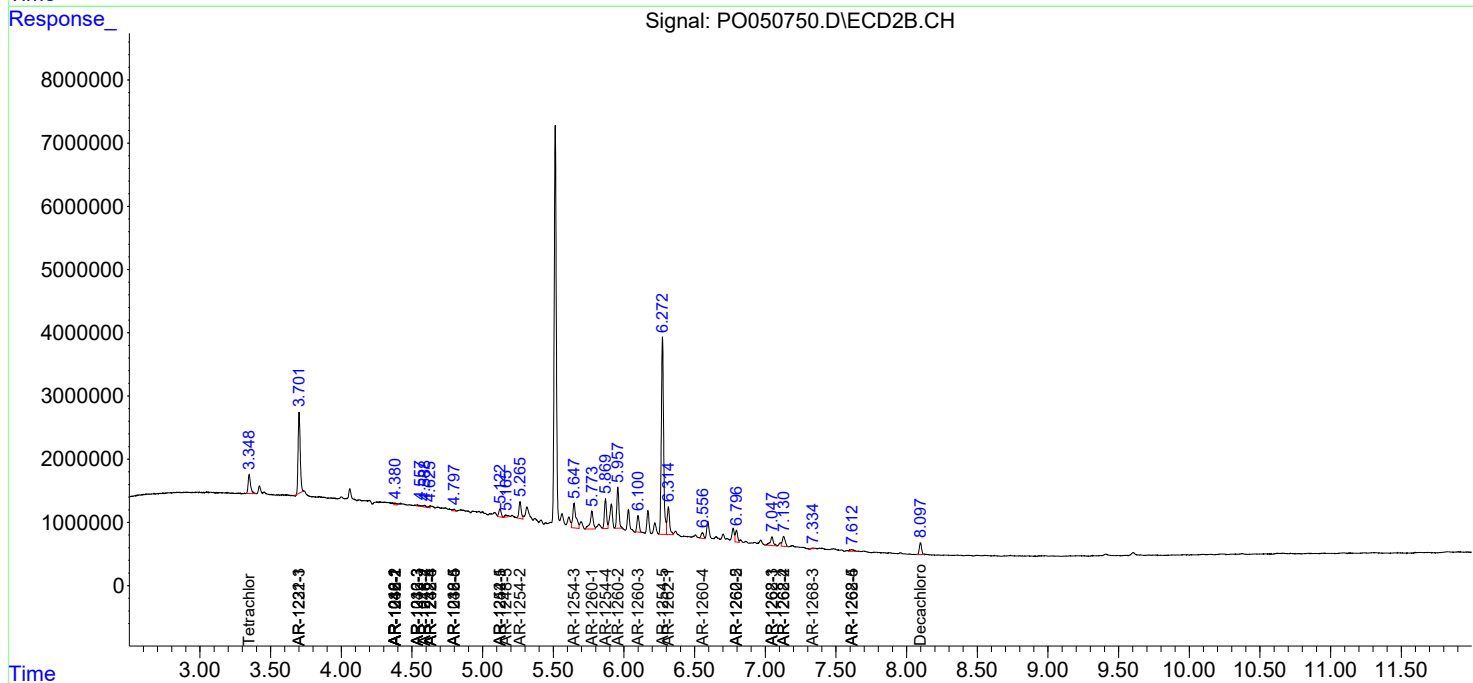
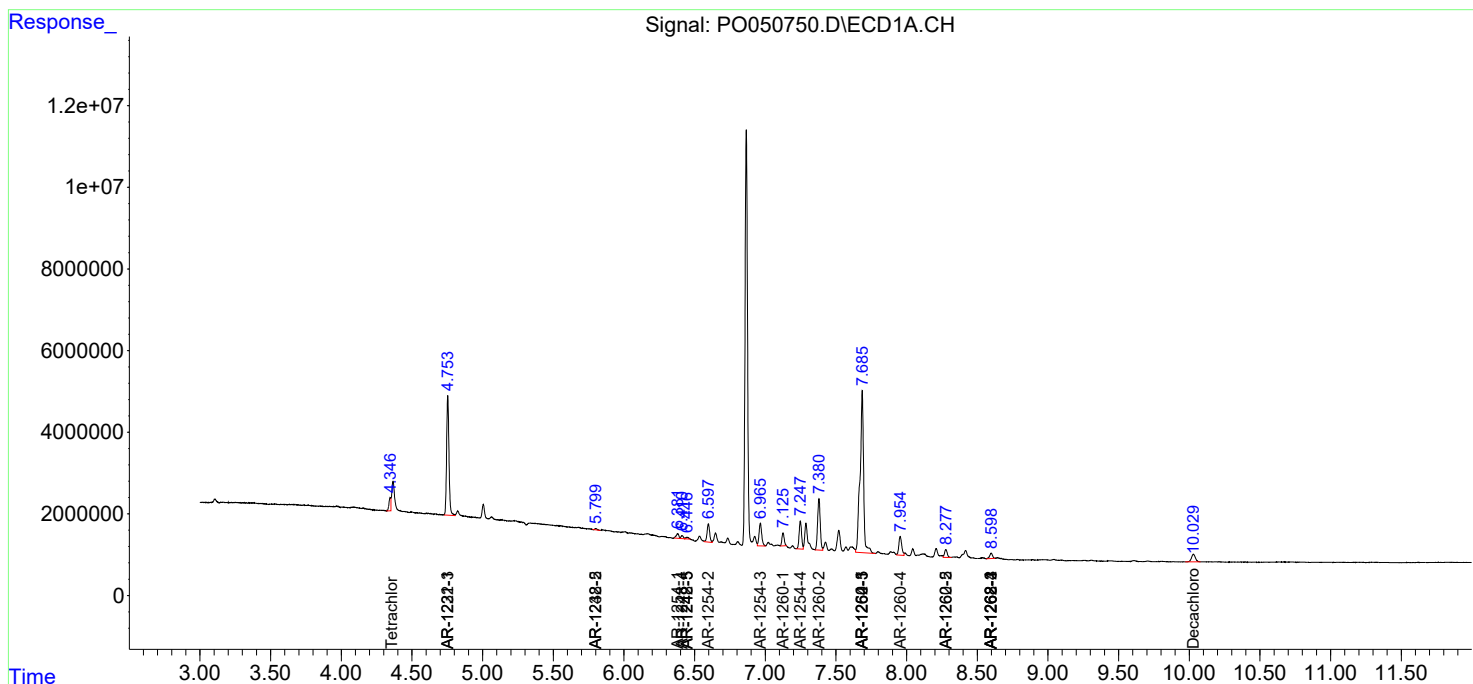
(f)=RT Delta > 1/2 Window (#)=Amounts differ by > 25% (m)=manual int.

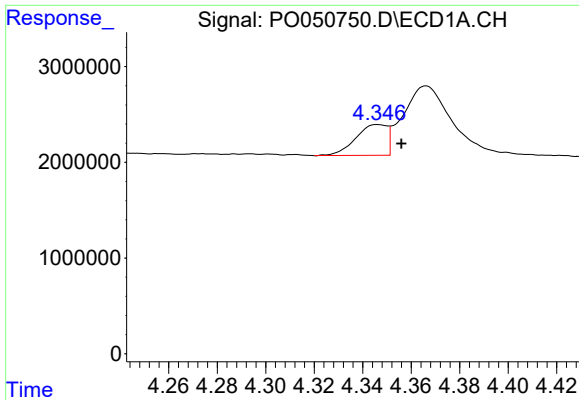
Data Path : Z:\pestpcbsrv\HPCHEM1\ECD_O\Data\PO103018\
 Data File : PO050750.D
 Signal(s) : Signal #1: ECD1A.CH Signal #2: ECD2B.CH
 Acq On : 30 Oct 2018 11:58
 Operator : SM/SJ
 Sample : J5515-01
 Misc :
 ALS Vial : 13 Sample Multiplier: 1

Instrument :
 ECD_O
 ClientSampled :

Integration File signal 1: autoint1.e
 Integration File signal 2: autoint2.e
 Quant Time: Oct 30 13:20:59 2018
 Quant Method : Z:\pestpcbsrv\HPCHEM1\ECD_O\methods\PO102918.M
 Quant Title : GC EXTRACTABLES
 QLast Update : Tue Oct 30 07:48:38 2018
 Response via : Initial Calibration
 Integrator: ChemStation 6890 Scale Mode: Small noise peaks clipped

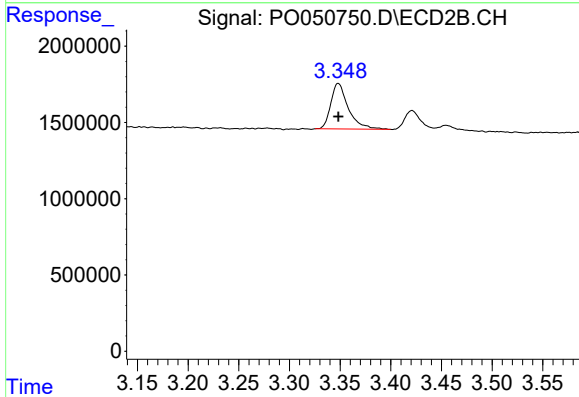
Volume Inj. : 2 µl
 Signal #1 Phase : ZB-MR1 Signal #2 Phase: ZB-MR2
 Signal #1 Info : 30Mx0.32mmx 0.50µ Signal #2 Info : 30M x 0.32mm x 0.25µm



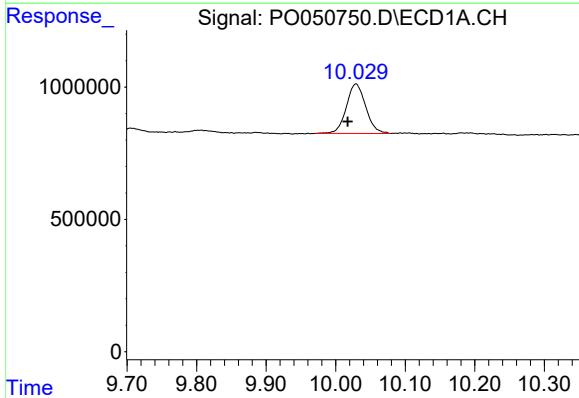


#1 Tetrachloro-m-xylene
 R.T.: 4.346 min
 Delta R.T.: -0.010 min
 Response: 2894396
 Conc: 5.79 ng/ml

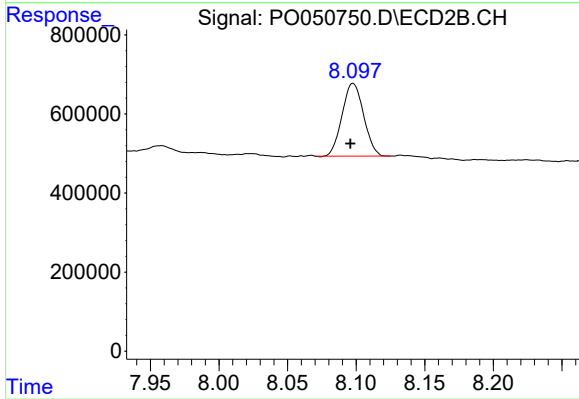
Instrument :
 ECD_O
 ClientSampled :



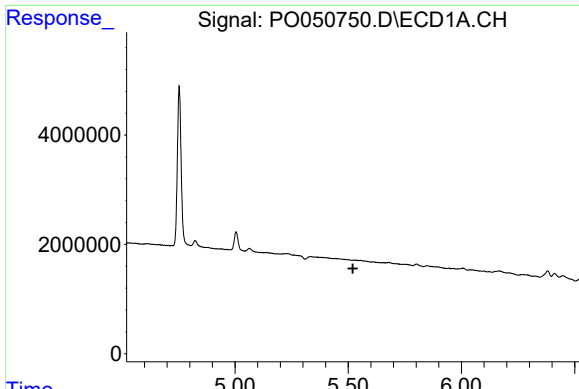
#1 Tetrachloro-m-xylene
 R.T.: 3.348 min
 Delta R.T.: 0.000 min
 Response: 3590602
 Conc: 16.52 ng/ml



#2 Decachlorobiphenyl
 R.T.: 10.029 min
 Delta R.T.: 0.012 min
 Response: 3618573
 Conc: 11.64 ng/ml



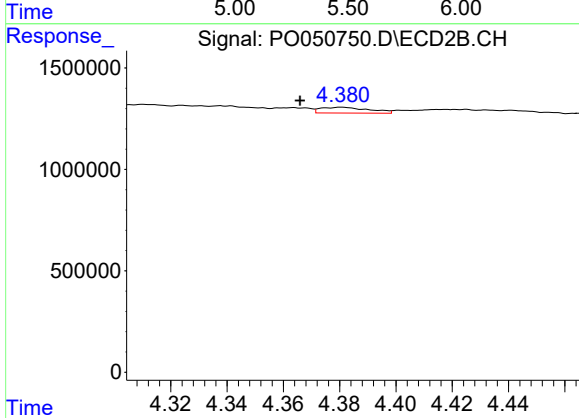
#2 Decachlorobiphenyl
 R.T.: 8.098 min
 Delta R.T.: 0.002 min
 Response: 2008434
 Conc: 7.85 ng/ml



#3 AR-1016-1

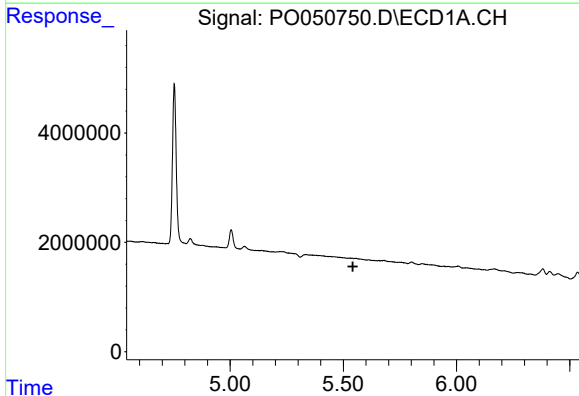
R.T.: 0.000 min
 Exp R.T. : 5.521 min
 Response: 0
 Conc: N.D.

Instrument :
 ECD_O
 ClientSampleId :



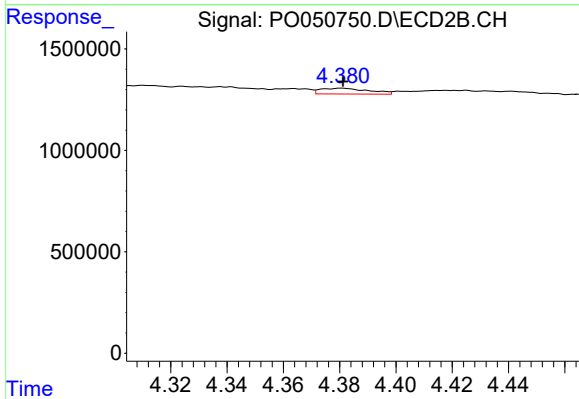
#3 AR-1016-1

R.T.: 4.381 min
 Delta R.T.: 0.015 min
 Response: 340877
 Conc: 37.09 ng/ml



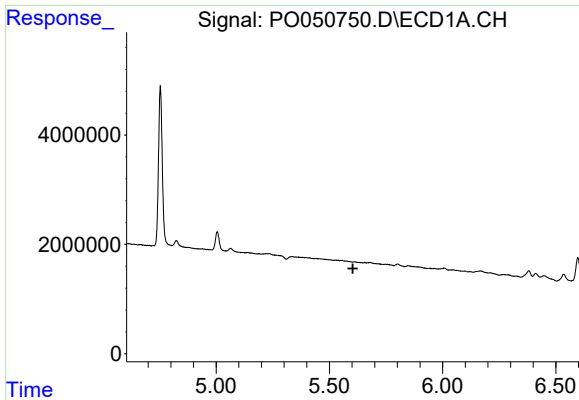
#4 AR-1016-2

R.T.: 0.000 min
 Exp R.T. : 5.542 min
 Response: 0
 Conc: N.D.



#4 AR-1016-2

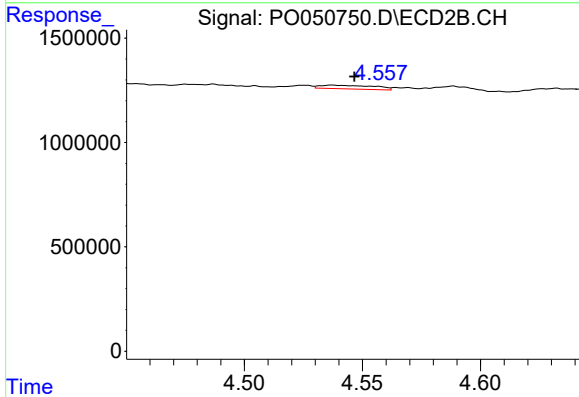
R.T.: 4.381 min
 Delta R.T.: 0.000 min
 Response: 340877
 Conc: 22.00 ng/ml



#5 AR-1016-3

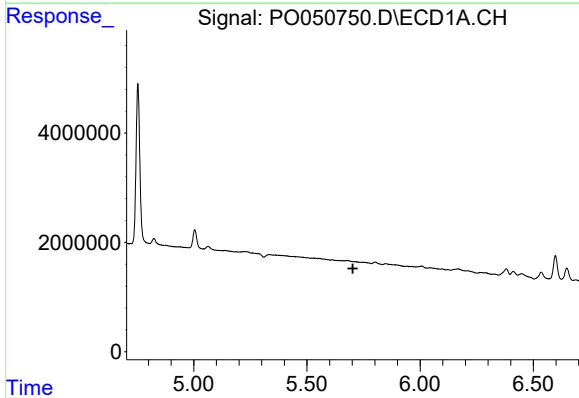
R.T.: 0.000 min
 Exp R.T. : 5.604 min
 Response: 0
 Conc: N.D.

Instrument :
 ECD_O
 ClientSampleId :



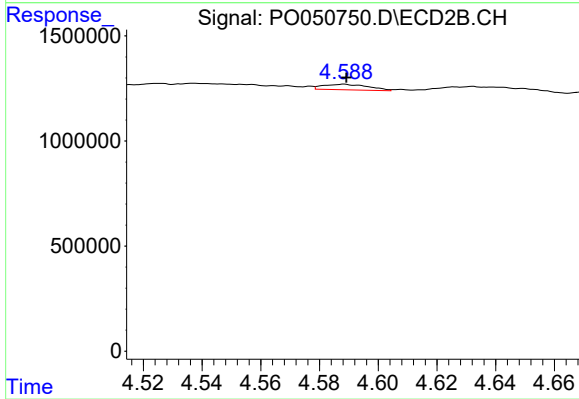
#5 AR-1016-3

R.T.: 4.537 min
 Delta R.T.: -0.009 min
 Response: 278079
 Conc: 34.72 ng/ml



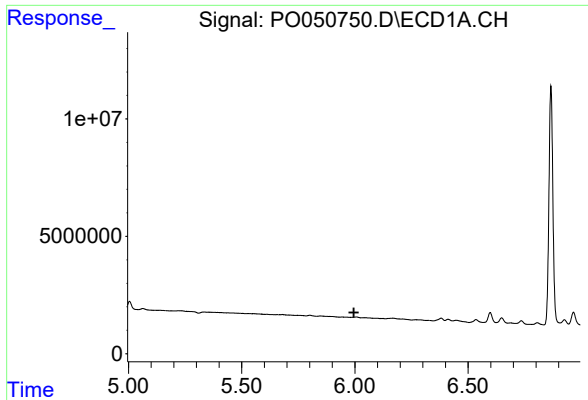
#6 AR-1016-4

R.T.: 0.000 min
 Exp R.T. : 5.703 min
 Response: 0
 Conc: N.D.



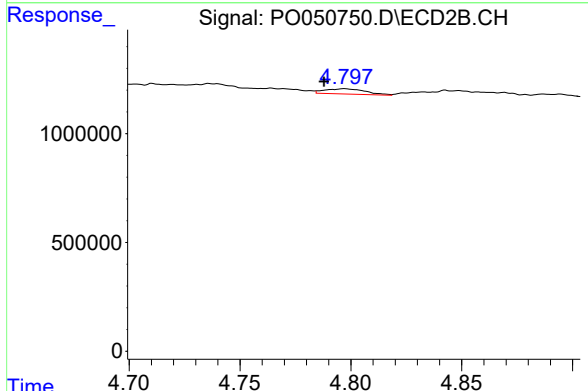
#6 AR-1016-4

R.T.: 4.588 min
 Delta R.T.: 0.000 min
 Response: 283031
 Conc: 46.51 ng/ml

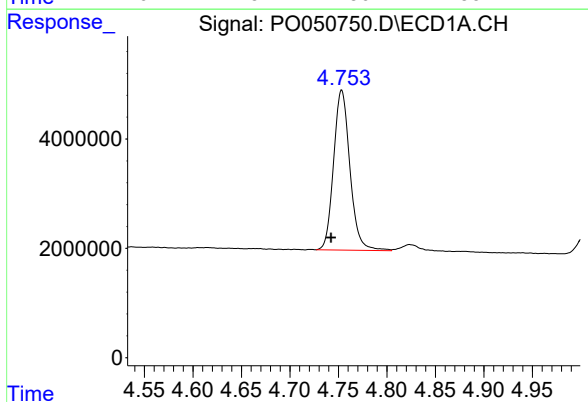


#7 AR-1016-5
 R.T.: 0.000 min
 Exp R.T.: 5.995 min
 Response: 0
 Conc: N.D.

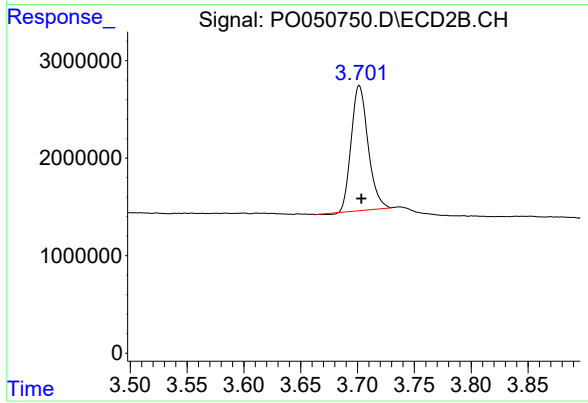
Instrument :
 ECD_O
 ClientSampleId :



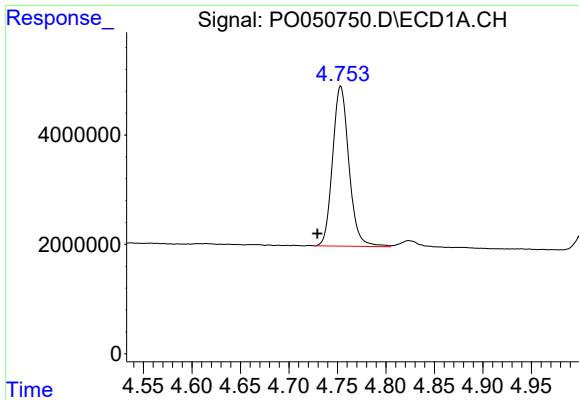
#7 AR-1016-5
 R.T.: 4.797 min
 Delta R.T.: 0.009 min
 Response: 310660
 Conc: 36.00 ng/ml



#10 AR-1221-3
 R.T.: 4.753 min
 Delta R.T.: 0.011 min
 Response: 34309329
 Conc: 2883.53 ng/ml

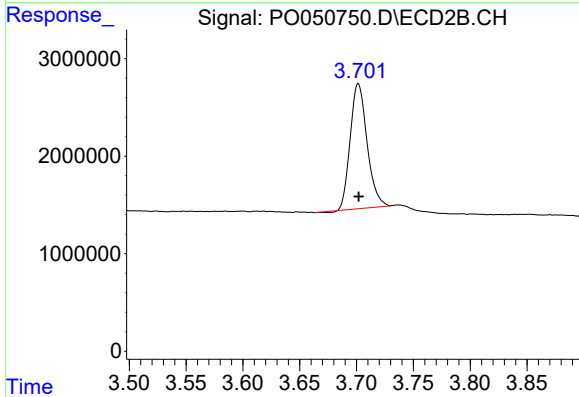


#10 AR-1221-3
 R.T.: 3.702 min
 Delta R.T.: -0.002 min
 Response: 13194068
 Conc: 3085.16 ng/ml

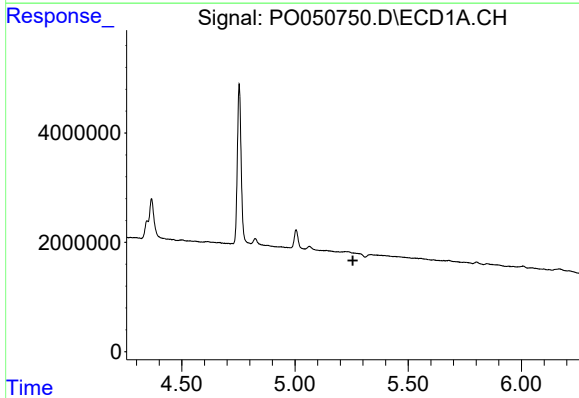


#11 AR-1232-1
 R.T.: 4.753 min
 Delta R.T.: 0.024 min
 Response: 34309329
 Conc: 4008.03 ng/ml

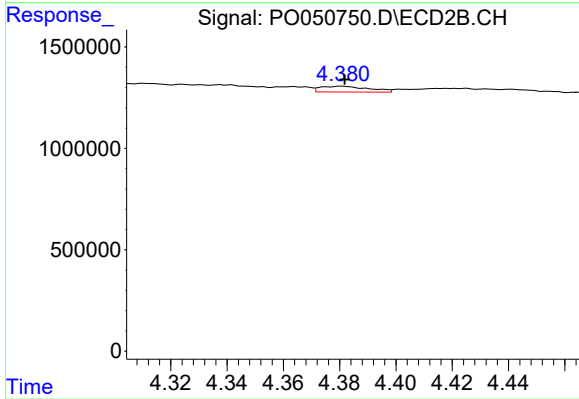
Instrument :
 ECD_O
 ClientSampled :



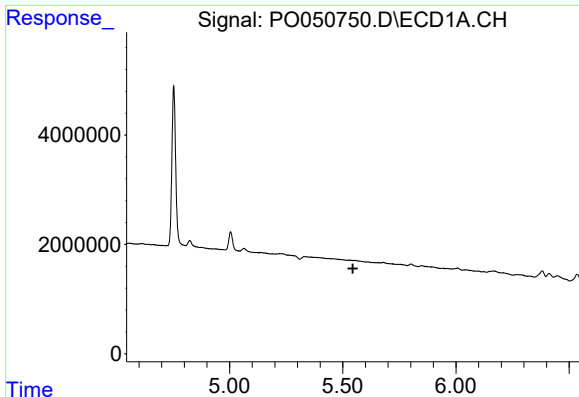
#11 AR-1232-1
 R.T.: 3.702 min
 Delta R.T.: 0.000 min
 Response: 13194068
 Conc: 3300.51 ng/ml



#12 AR-1232-2
 R.T.: 0.000 min
 Exp R.T. : 5.256 min
 Response: 0
 Conc: N.D.



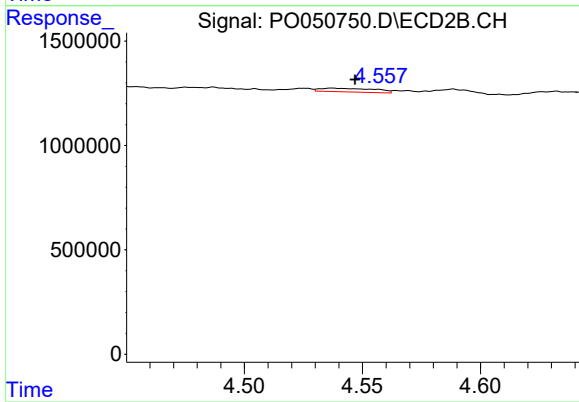
#12 AR-1232-2
 R.T.: 4.381 min
 Delta R.T.: -0.001 min
 Response: 340877
 Conc: 71.26 ng/ml



#13 AR-1232-3

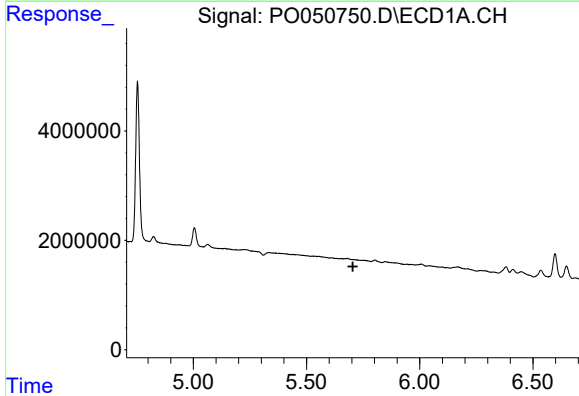
R.T.: 0.000 min
 Exp R.T. : 5.545 min
 Response: 0
 Conc: N.D.

Instrument :
 ECD_O
 ClientSampleId :



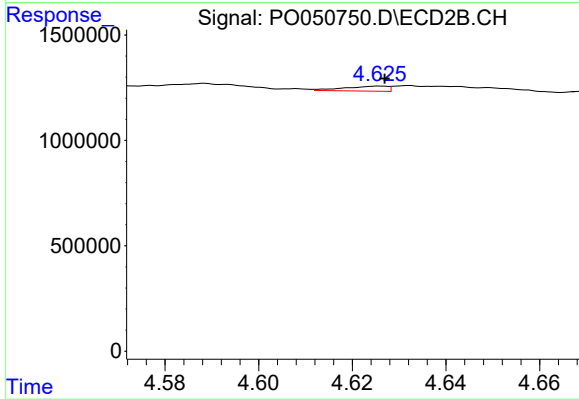
#13 AR-1232-3

R.T.: 4.537 min
 Delta R.T.: -0.010 min
 Response: 278079
 Conc: 106.64 ng/ml



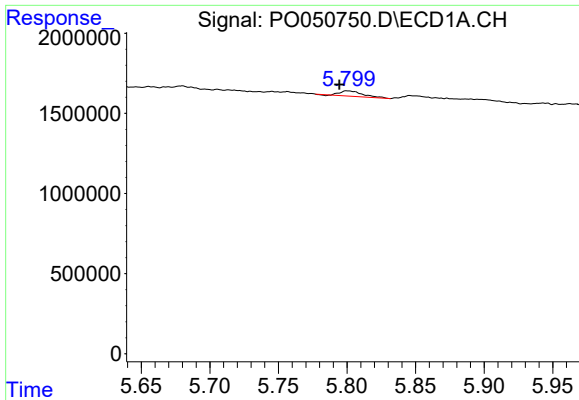
#14 AR-1232-4

R.T.: 0.000 min
 Exp R.T. : 5.705 min
 Response: 0
 Conc: N.D.



#14 AR-1232-4

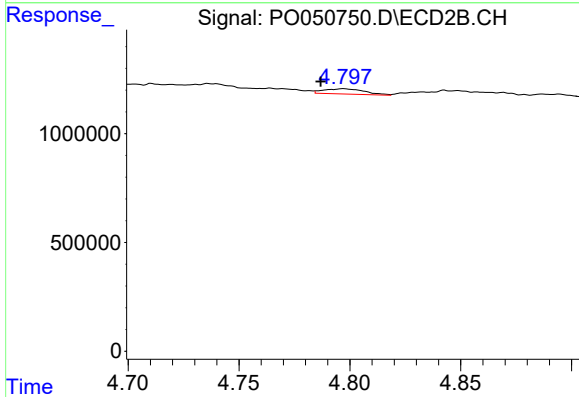
R.T.: 4.626 min
 Delta R.T.: 0.000 min
 Response: 152560
 Conc: 68.44 ng/ml



#15 AR-1232-5

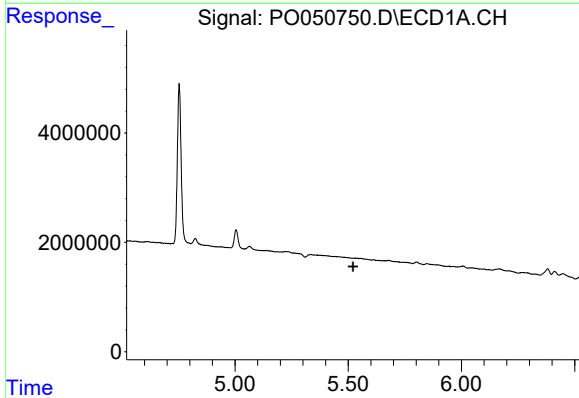
R.T.: 5.800 min
 Delta R.T.: 0.005 min
 Response: 392021
 Conc: 132.09 ng/ml

Instrument :
 ECD_O
 ClientSampleId :



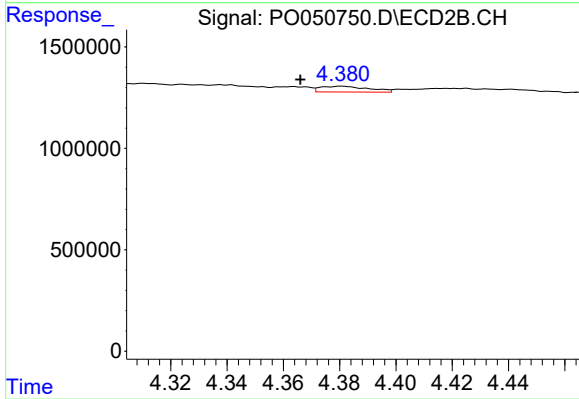
#15 AR-1232-5

R.T.: 4.797 min
 Delta R.T.: 0.010 min
 Response: 310660
 Conc: 116.80 ng/ml



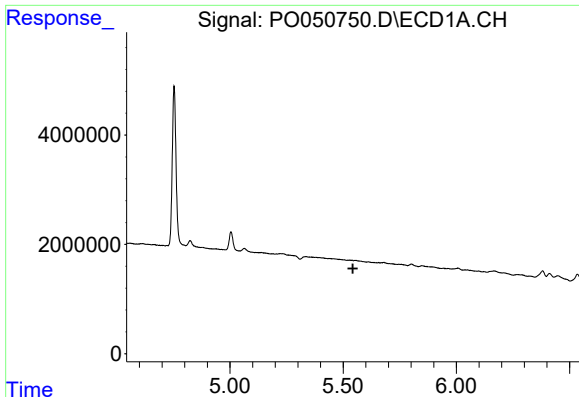
#16 AR-1242-1

R.T.: 0.000 min
 Exp R.T. : 5.521 min
 Response: 0
 Conc: N.D.



#16 AR-1242-1

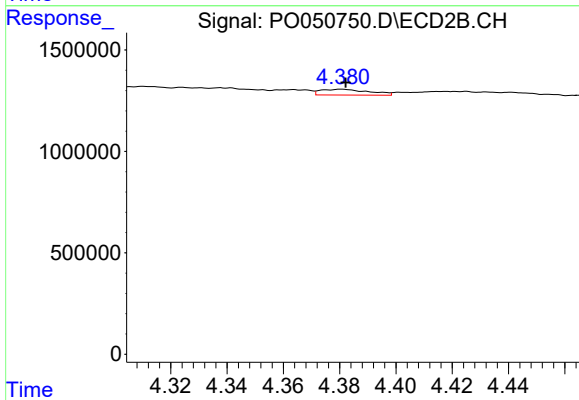
R.T.: 4.381 min
 Delta R.T.: 0.015 min
 Response: 340877
 Conc: 58.08 ng/ml



#17 AR-1242-2

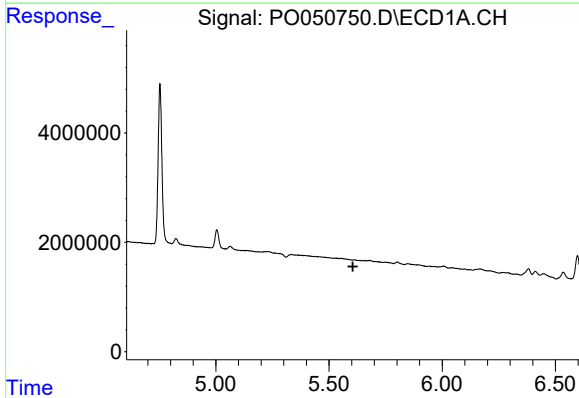
R.T.: 0.000 min
 Exp R.T. : 5.543 min
 Response: 0
 Conc: N.D.

Instrument :
 ECD_O
 ClientSampleId :



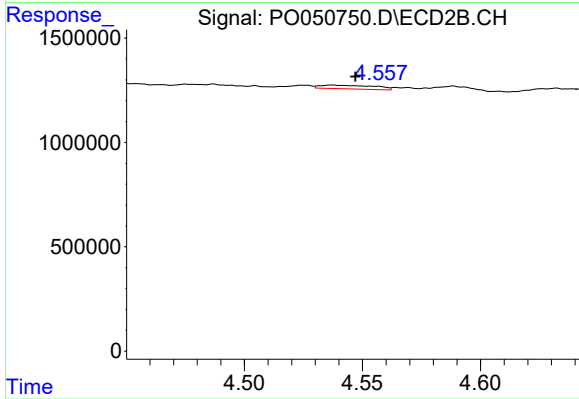
#17 AR-1242-2

R.T.: 4.381 min
 Delta R.T.: -0.002 min
 Response: 340877
 Conc: 34.12 ng/ml



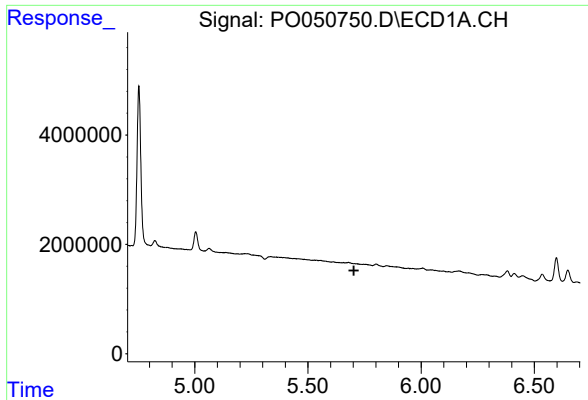
#18 AR-1242-3

R.T.: 0.000 min
 Exp R.T. : 5.605 min
 Response: 0
 Conc: N.D.



#18 AR-1242-3

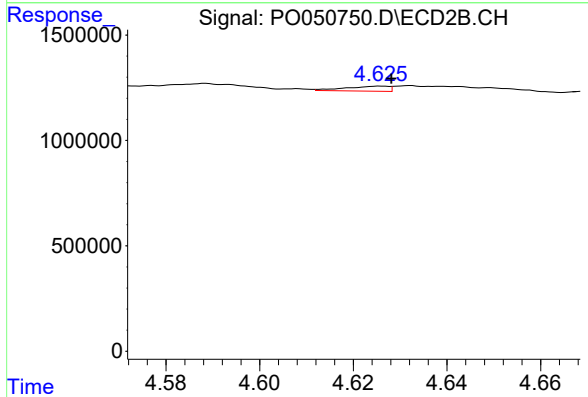
R.T.: 4.537 min
 Delta R.T.: -0.010 min
 Response: 278079
 Conc: 55.07 ng/ml



#19 AR-1242-4

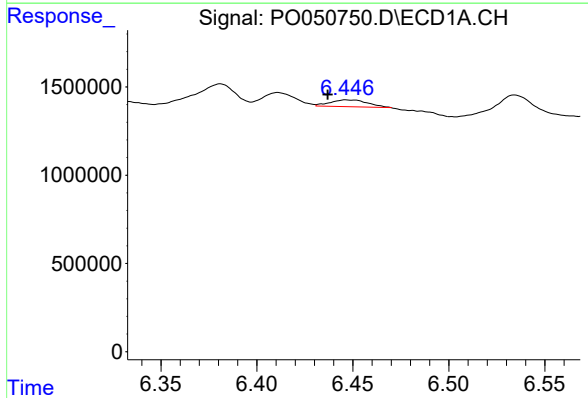
R.T.: 0.000 min
 Exp R.T.: 5.703 min
 Response: 0
 Conc: N.D.

Instrument :
 ECD_O
 ClientSampled :



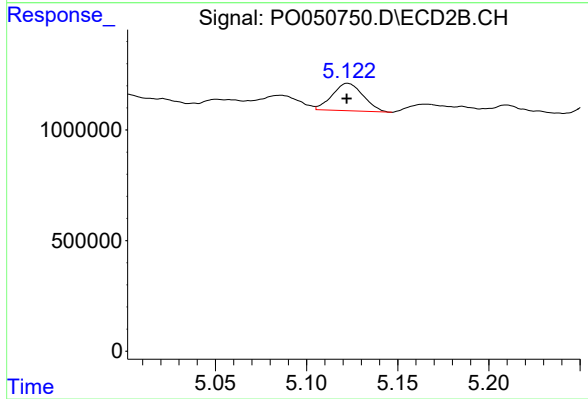
#19 AR-1242-4

R.T.: 4.626 min
 Delta R.T.: -0.002 min
 Response: 152560
 Conc: 31.94 ng/ml



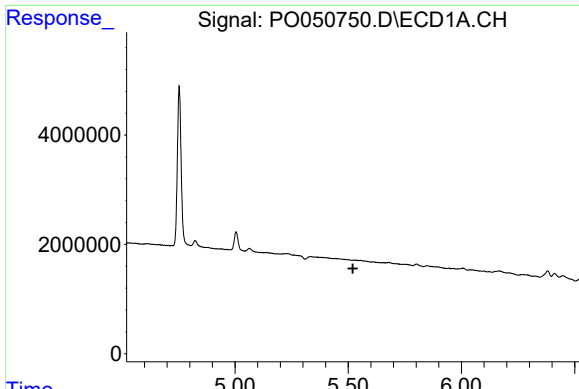
#20 AR-1242-5

R.T.: 6.446 min
 Delta R.T.: 0.009 min
 Response: 526270
 Conc: 56.42 ng/ml



#20 AR-1242-5

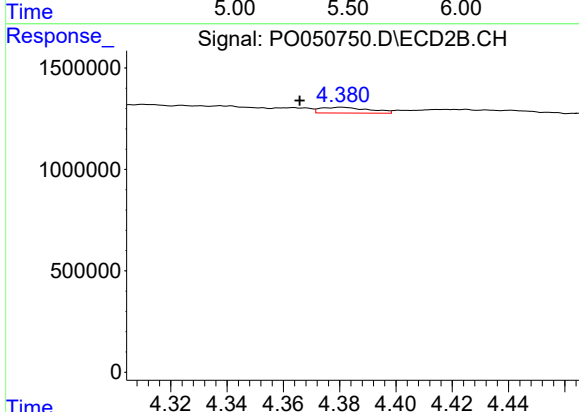
R.T.: 5.122 min
 Delta R.T.: 0.000 min
 Response: 1461872
 Conc: 226.91 ng/ml



#21 AR-1248-1

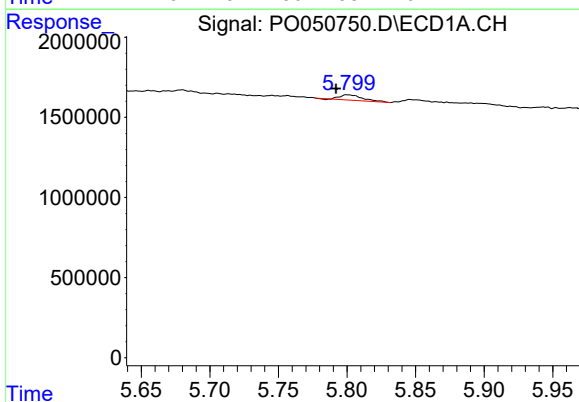
R.T.: 0.000 min
 Exp R.T.: 5.521 min
 Response: 0
 Conc: N.D.

Instrument :
 ECD_O
 ClientSampled :



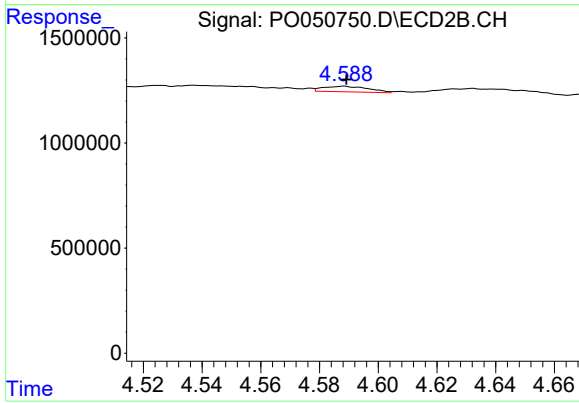
#21 AR-1248-1

R.T.: 4.381 min
 Delta R.T.: 0.015 min
 Response: 340877
 Conc: 73.89 ng/ml



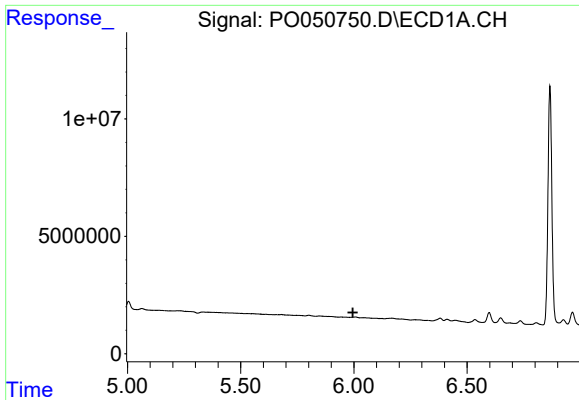
#22 AR-1248-2

R.T.: 5.800 min
 Delta R.T.: 0.008 min
 Response: 392021
 Conc: 30.26 ng/ml



#22 AR-1248-2

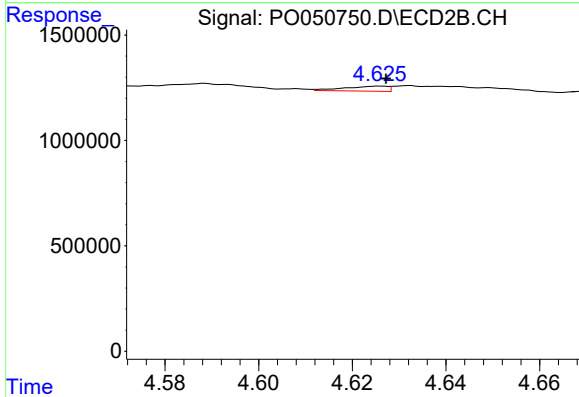
R.T.: 4.588 min
 Delta R.T.: 0.000 min
 Response: 283031
 Conc: 40.64 ng/ml



#23 AR-1248-3

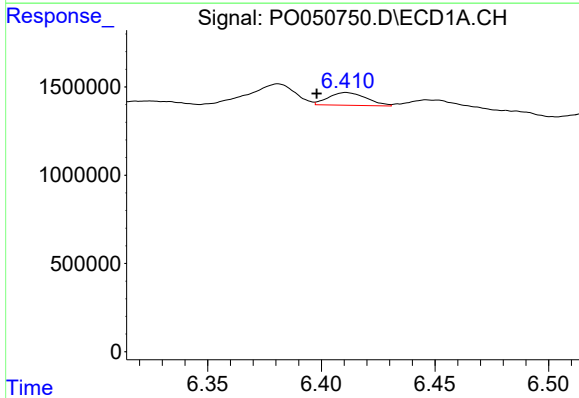
R.T.: 0.000 min
 Exp R.T.: 5.996 min
 Response: 0
 Conc: N.D.

Instrument :
 ECD_O
 ClientSampled :



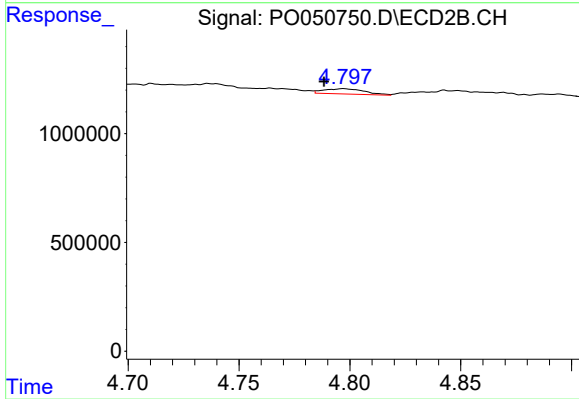
#23 AR-1248-3

R.T.: 4.626 min
 Delta R.T.: -0.001 min
 Response: 152560
 Conc: 21.82 ng/ml



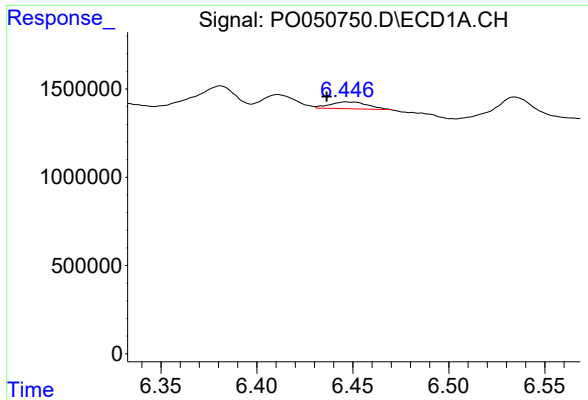
#24 AR-1248-4

R.T.: 6.411 min
 Delta R.T.: 0.013 min
 Response: 847135
 Conc: 50.81 ng/ml



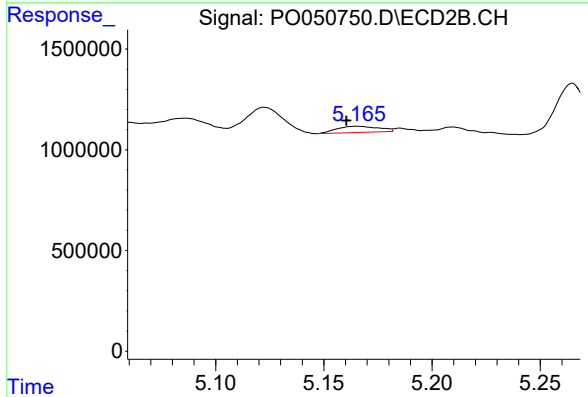
#24 AR-1248-4

R.T.: 4.797 min
 Delta R.T.: 0.009 min
 Response: 310660
 Conc: 33.29 ng/ml

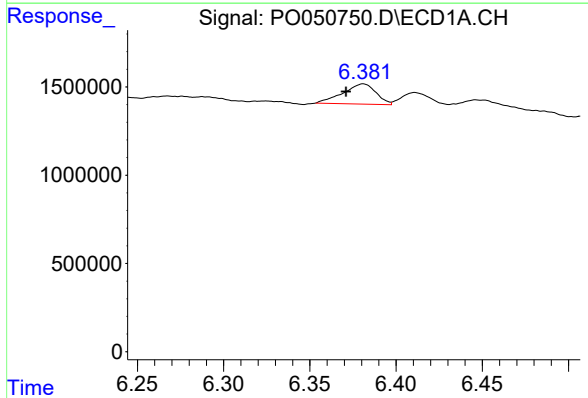


#25 AR-1248-5
 R.T.: 6.446 min
 Delta R.T.: 0.010 min
 Response: 526270
 Conc: 33.71 ng/ml

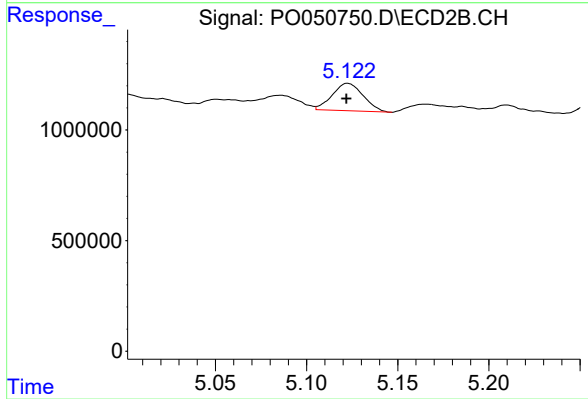
Instrument :
 ECD_O
 ClientSampleId :



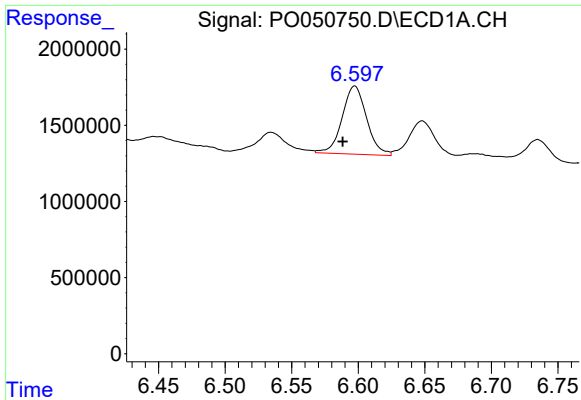
#25 AR-1248-5
 R.T.: 5.165 min
 Delta R.T.: 0.005 min
 Response: 414336
 Conc: 43.09 ng/ml



#26 AR-1254-1
 R.T.: 6.381 min
 Delta R.T.: 0.010 min
 Response: 1530528
 Conc: 69.70 ng/ml



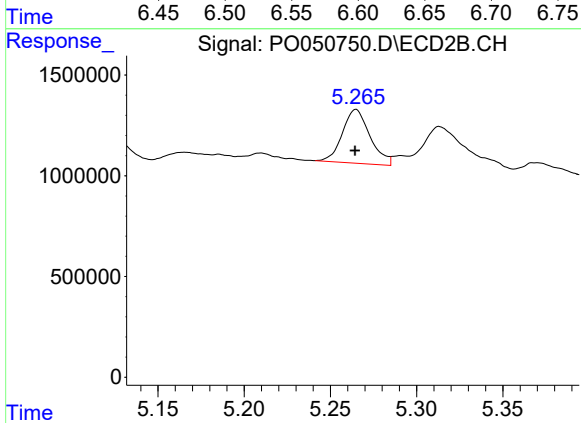
#26 AR-1254-1
 R.T.: 5.122 min
 Delta R.T.: 0.000 min
 Response: 1461872
 Conc: 76.24 ng/ml



#27 AR-1254-2

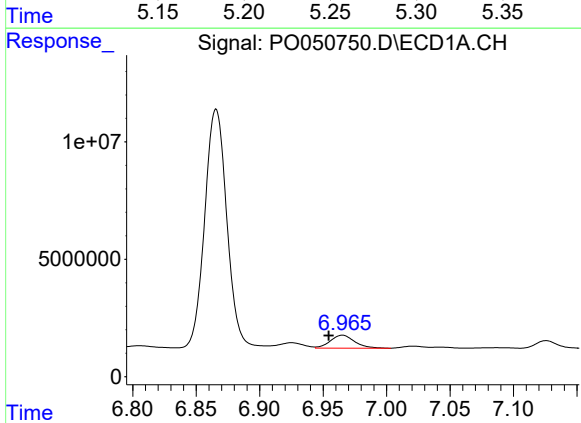
R.T.: 6.597 min
 Delta R.T.: 0.009 min
 Response: 5729119
 Conc: 169.45 ng/ml

Instrument :
 ECD_O
 ClientSampleId :



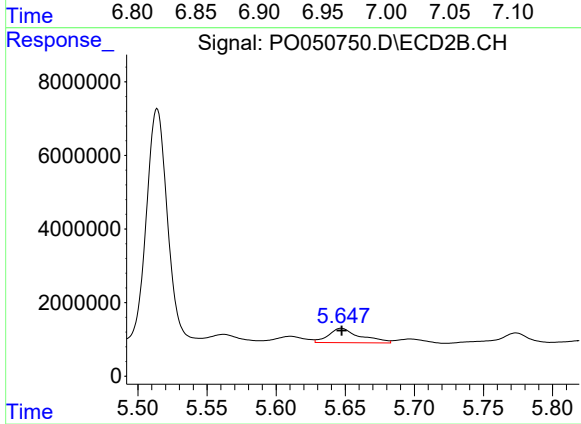
#27 AR-1254-2

R.T.: 5.265 min
 Delta R.T.: 0.000 min
 Response: 2984580
 Conc: 171.93 ng/ml



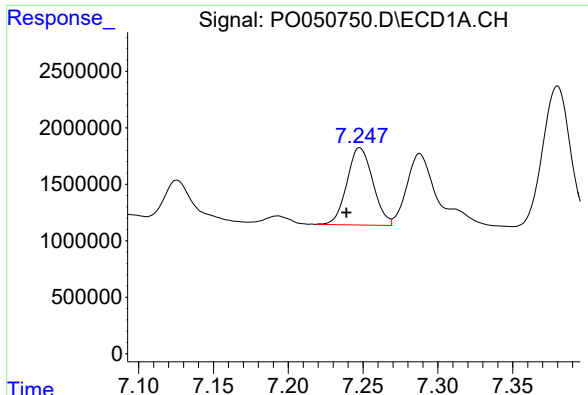
#28 AR-1254-3

R.T.: 6.965 min
 Delta R.T.: 0.011 min
 Response: 7357472
 Conc: 211.28 ng/ml



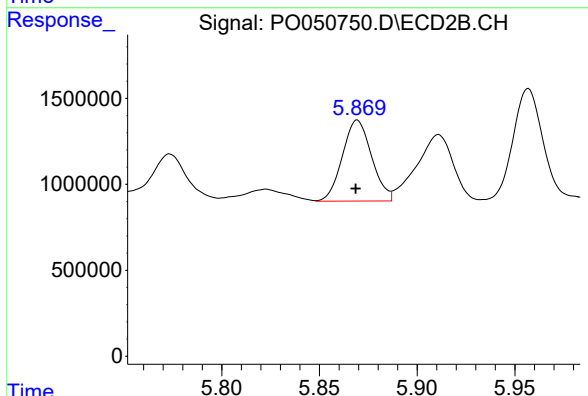
#28 AR-1254-3

R.T.: 5.647 min
 Delta R.T.: 0.000 min
 Response: 6187196
 Conc: 218.60 ng/ml

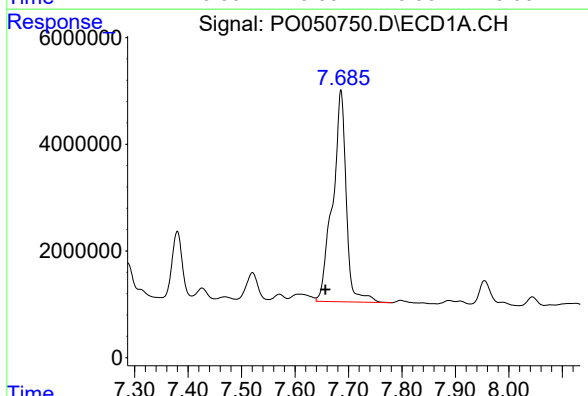


#29 AR-1254-4
 R.T.: 7.248 min
 Delta R.T.: 0.009 min
 Response: 8242258
 Conc: 356.35 ng/ml

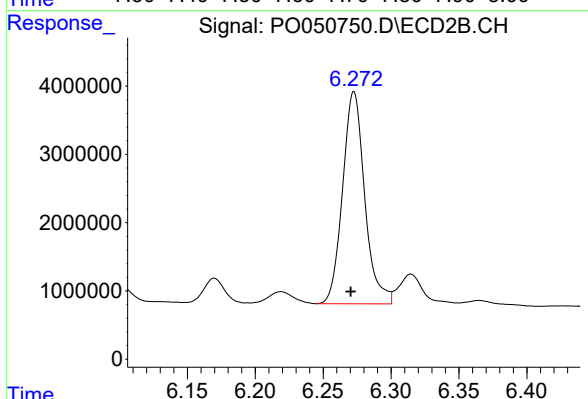
Instrument :
 ECD_O
 ClientSampleId :



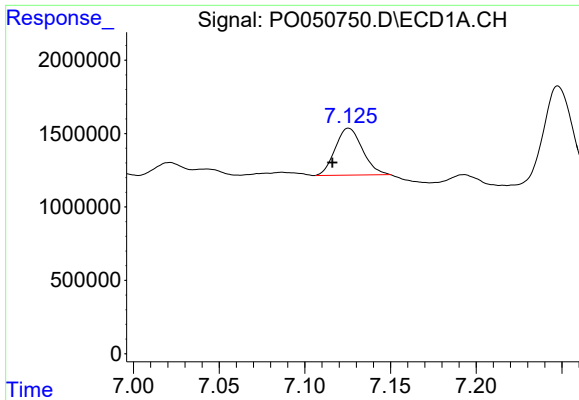
#29 AR-1254-4
 R.T.: 5.869 min
 Delta R.T.: 0.000 min
 Response: 4901847
 Conc: 277.33 ng/ml



#30 AR-1254-5
 R.T.: 7.686 min
 Delta R.T.: 0.029 min
 Response: 70147965
 Conc: 2857.10 ng/ml

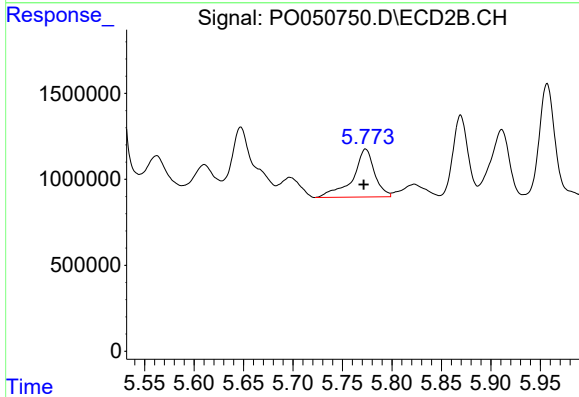


#30 AR-1254-5
 R.T.: 6.273 min
 Delta R.T.: 0.002 min
 Response: 35273851
 Conc: 1319.33 ng/ml

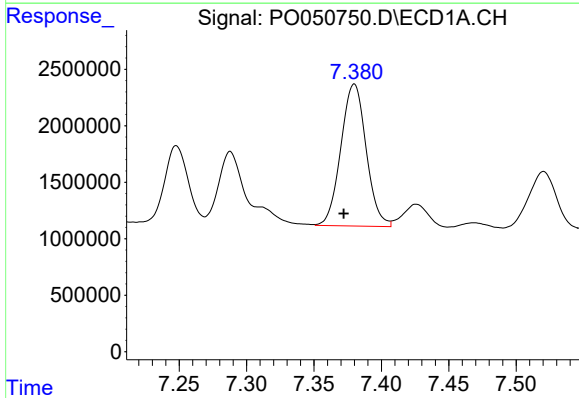


#31 AR-1260-1
 R.T.: 7.126 min
 Delta R.T.: 0.010 min
 Response: 3507817
 Conc: 136.35 ng/ml

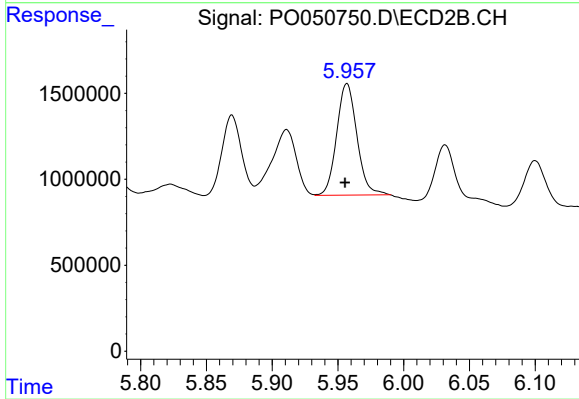
Instrument :
 ECD_O
 ClientSampleId :



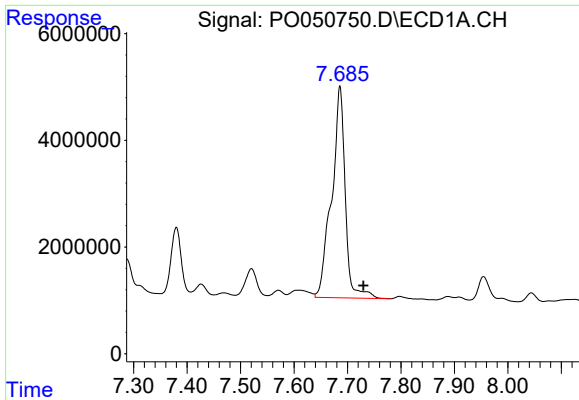
#31 AR-1260-1
 R.T.: 5.773 min
 Delta R.T.: 0.002 min
 Response: 4301632
 Conc: 208.05 ng/ml



#32 AR-1260-2
 R.T.: 7.380 min
 Delta R.T.: 0.008 min
 Response: 16467733
 Conc: 556.67 ng/ml

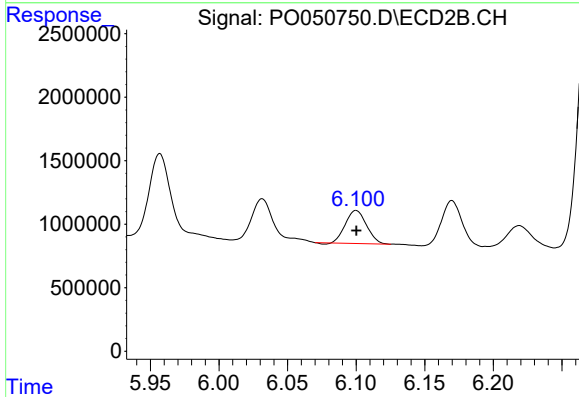


#32 AR-1260-2
 R.T.: 5.957 min
 Delta R.T.: 0.002 min
 Response: 6907764
 Conc: 240.56 ng/ml

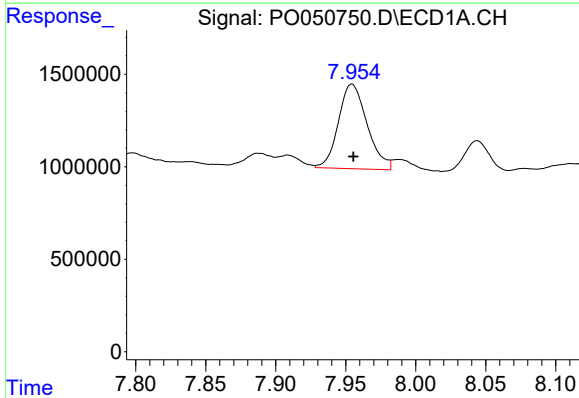


#33 AR-1260-3
 R.T.: 7.686 min
 Delta R.T.: -0.044 min
 Response: 70147965
 Conc: 3309.90 ng/ml

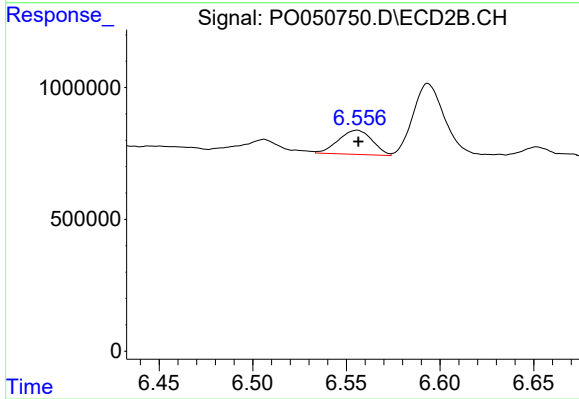
Instrument :
 ECD_O
 ClientSampleId :



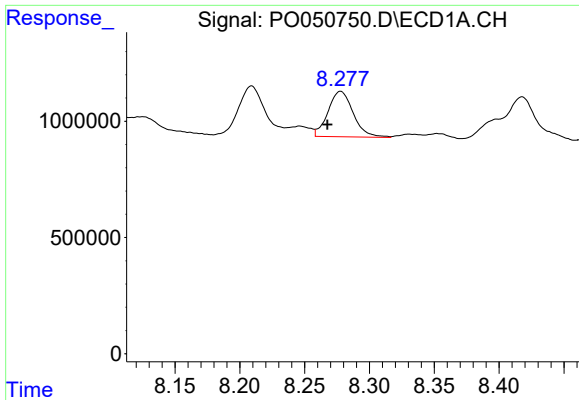
#33 AR-1260-3
 R.T.: 6.100 min
 Delta R.T.: 0.000 min
 Response: 2771508
 Conc: 112.39 ng/ml



#34 AR-1260-4
 R.T.: 7.954 min
 Delta R.T.: -0.001 min
 Response: 6540395
 Conc: 285.82 ng/ml



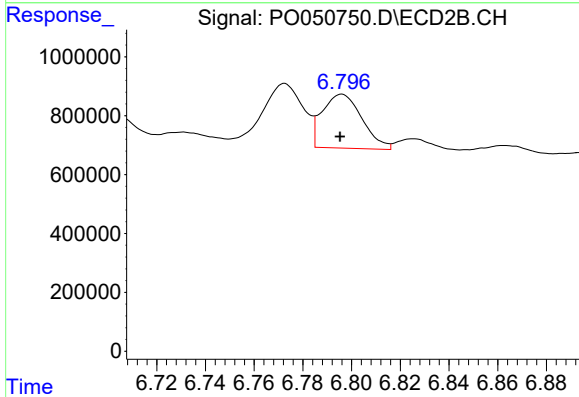
#34 AR-1260-4
 R.T.: 6.556 min
 Delta R.T.: 0.000 min
 Response: 1147167
 Conc: 55.62 ng/ml



#35 AR-1260-5

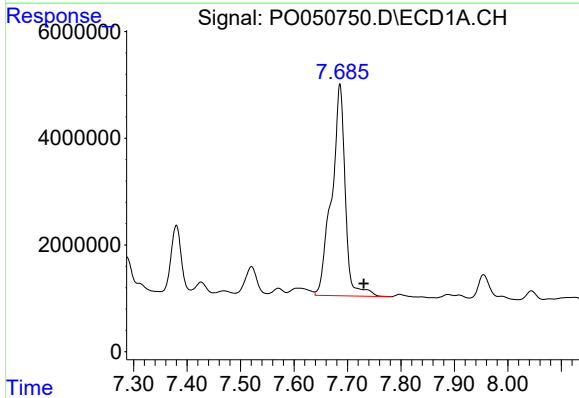
R.T.: 8.278 min
 Delta R.T.: 0.010 min
 Response: 2644078
 Conc: 60.03 ng/ml

Instrument :
 ECD_O
 ClientSampleId :



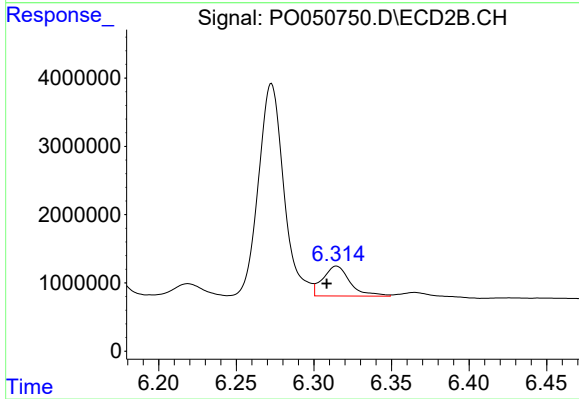
#35 AR-1260-5

R.T.: 6.796 min
 Delta R.T.: 0.000 min
 Response: 2077869
 Conc: 39.99 ng/ml



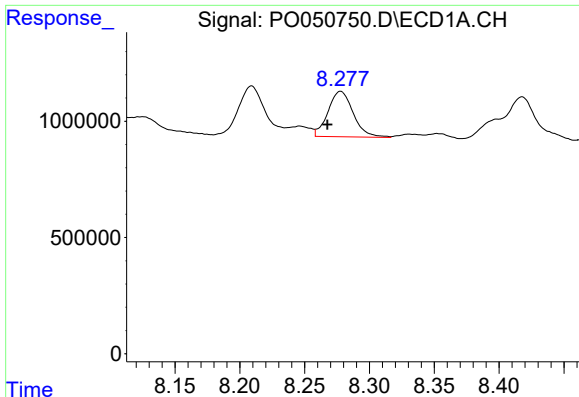
#36 AR-1262-1

R.T.: 7.686 min
 Delta R.T.: -0.044 min
 Response: 70147965
 Conc: 2843.40 ng/ml



#36 AR-1262-1

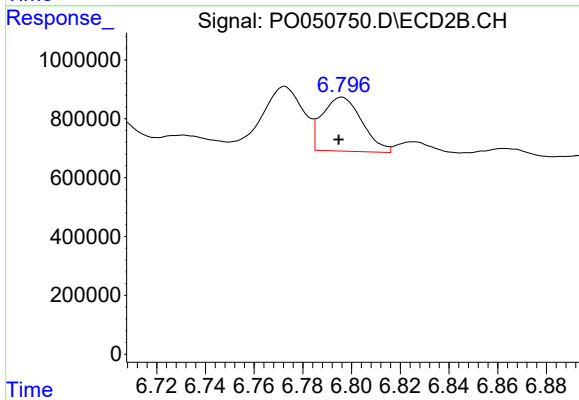
R.T.: 6.315 min
 Delta R.T.: 0.006 min
 Response: 5370881
 Conc: 190.86 ng/ml



#37 AR-1262-2

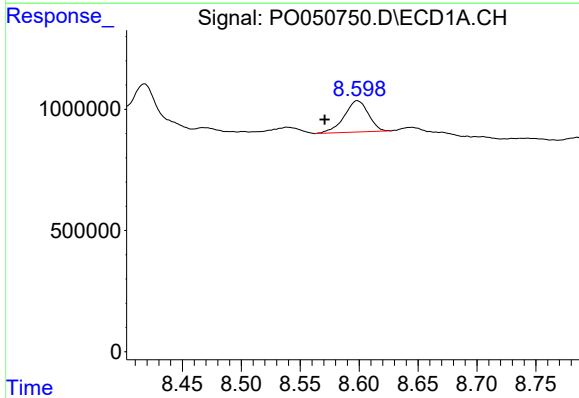
R.T.: 8.278 min
 Delta R.T.: 0.010 min
 Response: 2644078
 Conc: 67.56 ng/ml

Instrument :
 ECD_O
 ClientSampleId :



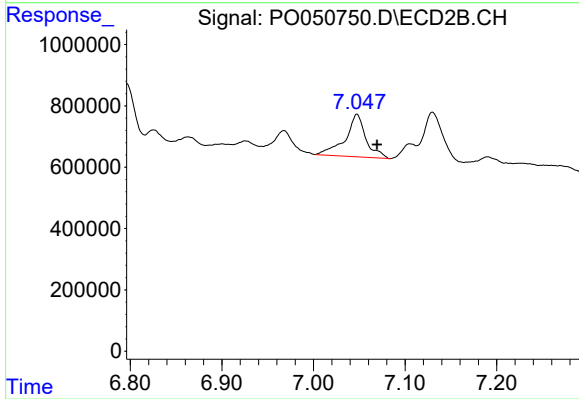
#37 AR-1262-2

R.T.: 6.796 min
 Delta R.T.: 0.001 min
 Response: 2077869
 Conc: 46.25 ng/ml



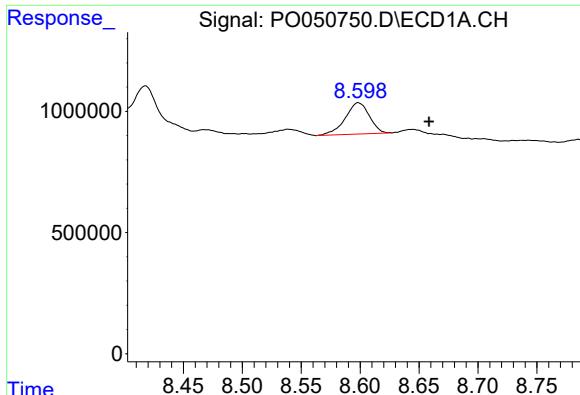
#38 AR-1262-3

R.T.: 8.599 min
 Delta R.T.: 0.028 min
 Response: 1844884
 Conc: 73.02 ng/ml



#38 AR-1262-3

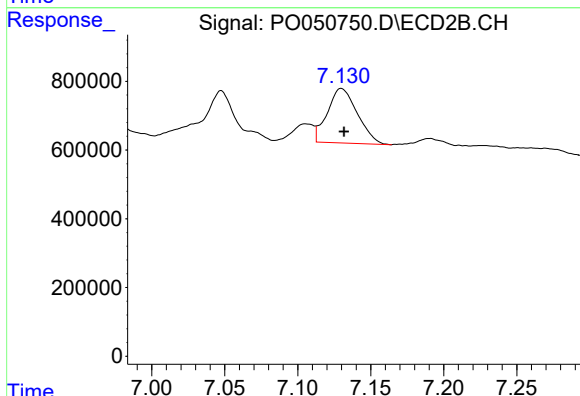
R.T.: 7.048 min
 Delta R.T.: -0.022 min
 Response: 2166431
 Conc: 120.66 ng/ml



#39 AR-1262-4

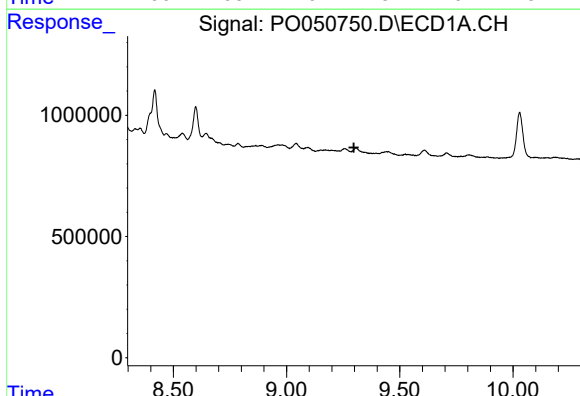
R.T.: 8.599 min
 Delta R.T.: -0.060 min
 Response: 1844884
 Conc: 94.00 ng/ml

Instrument :
 ECD_O
 ClientSampled :



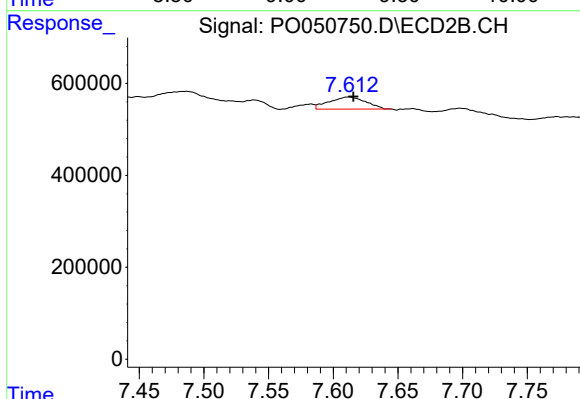
#39 AR-1262-4

R.T.: 7.130 min
 Delta R.T.: -0.002 min
 Response: 2261887
 Conc: 76.88 ng/ml



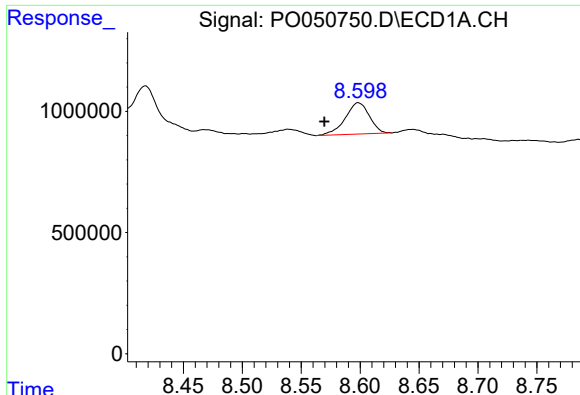
#40 AR-1262-5

R.T.: 0.000 min
 Exp R.T. : 9.297 min
 Response: 0
 Conc: N.D.



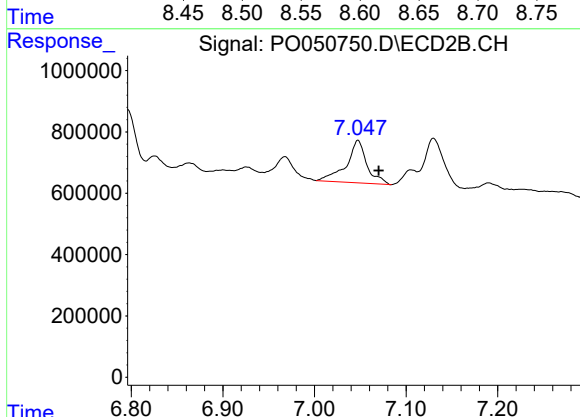
#40 AR-1262-5

R.T.: 7.612 min
 Delta R.T.: -0.004 min
 Response: 511324
 Conc: 44.06 ng/ml

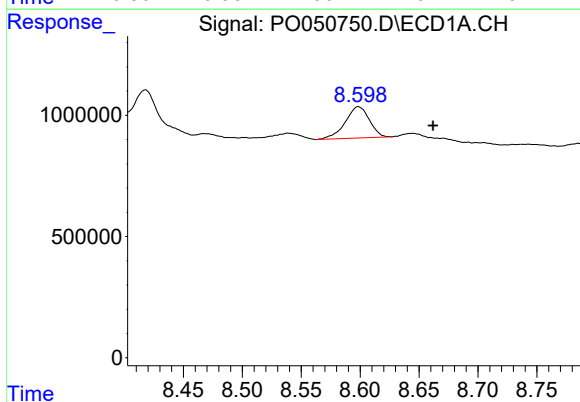


#41 AR-1268-1
 R.T.: 8.599 min
 Delta R.T.: 0.029 min
 Response: 1844884
 Conc: 36.57 ng/ml

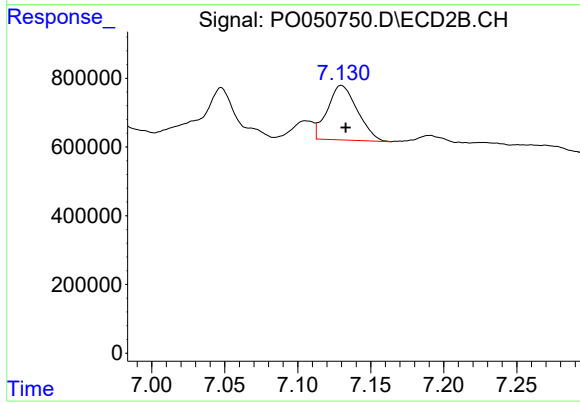
Instrument :
 ECD_O
 ClientSampleId :



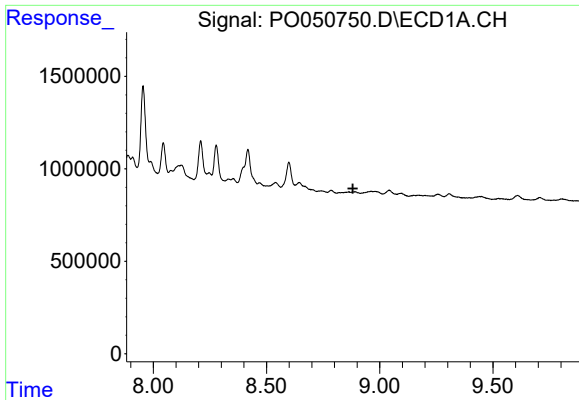
#41 AR-1268-1
 R.T.: 7.048 min
 Delta R.T.: -0.023 min
 Response: 2166431
 Conc: 39.33 ng/ml



#42 AR-1268-2
 R.T.: 8.599 min
 Delta R.T.: -0.063 min
 Response: 1844884
 Conc: 40.56 ng/ml



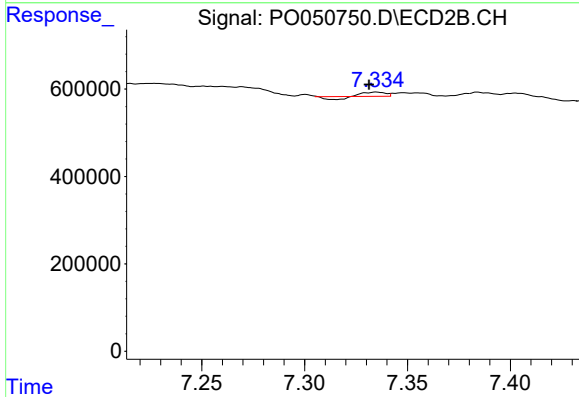
#42 AR-1268-2
 R.T.: 7.130 min
 Delta R.T.: -0.003 min
 Response: 2261887
 Conc: 47.45 ng/ml



#43 AR-1268-3

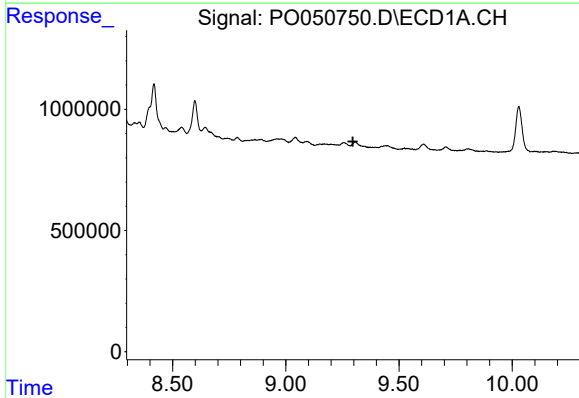
R.T.: 0.000 min
 Exp R.T. : 8.882 min
 Response: 0
 Conc: N.D.

Instrument :
 ECD_O
 ClientSampleId :



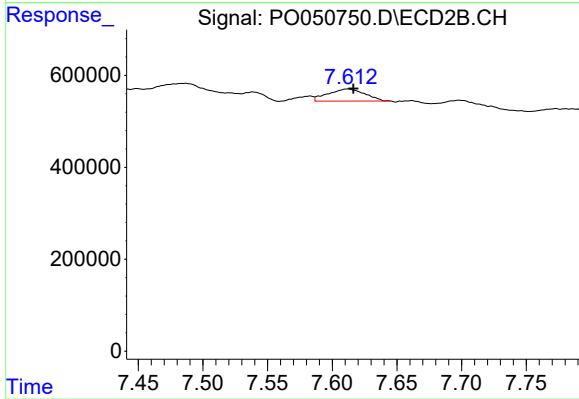
#43 AR-1268-3

R.T.: 7.335 min
 Delta R.T.: 0.004 min
 Response: 40345
 Conc: 0.94 ng/ml



#44 AR-1268-4

R.T.: 0.000 min
 Exp R.T. : 9.296 min
 Response: 0
 Conc: N.D.



#44 AR-1268-4

R.T.: 7.612 min
 Delta R.T.: -0.004 min
 Response: 511324
 Conc: 36.60 ng/ml