

Data Path : Z:\pestpcbsrv\HPCHEM1\ECD_0\Data\PO103018\
 Data File : PO050753.D
 Signal(s) : Signal #1: ECD1A.CH Signal #2: ECD2B.CH
 Acq On : 30 Oct 2018 12:56
 Operator : SM/SJ
 Sample : J5515-01RE
 Misc :
 ALS Vial : 4 Sample Multiplier: 1

Instrument :
 ECD_0
 ClientSampled :
 NON-UST-1ARE

Integration File signal 1: autoint1.e
 Integration File signal 2: autoint2.e
 Quant Time: Oct 30 13:21:53 2018
 Quant Method : Z:\pestpcbsrv\HPCHEM1\ECD_0\methods\PO102918.M
 Quant Title : GC EXTRACTABLES
 QLast Update : Tue Oct 30 07:48:38 2018
 Response via : Initial Calibration
 Integrator: ChemStation 6890 Scale Mode: Small noise peaks clipped

Volume Inj. : 2 µl
 Signal #1 Phase : ZB-MR1 Signal #2 Phase: ZB-MR2
 Signal #1 Info : 30Mx0.32mmx 0.50µ Signal #2 Info : 30M x 0.32mm x 0.25µm

Compound	RT#1	RT#2	Resp#1	Resp#2	ng/ml	ng/ml
System Monitoring Compounds						
1) SA Tetrachlo...	4.365	3.349	9782229	3429865	19.570	15.780
2) SA Decachlor...	10.029	8.099	3506574	1996791	11.281	7.806 #
Target Compounds						
3) L1 AR-1016-1	0.000	4.312	0	82016	N.D.	8.925 #
4) L1 AR-1016-2	0.000	4.312	0	82016	N.D.	5.293 #
5) L1 AR-1016-3	0.000	4.536	0	96810	N.D.	12.087 #
6) L1 AR-1016-4	0.000	4.592	0	482358	N.D.	79.273 #
7) L1 AR-1016-5	0.000	4.803	0	444822	N.D.	51.546 #
8) L2 AR-1221-1	0.000	3.552	0	32157	N.D.	19.024 #
9) L2 AR-1221-2	0.000	3.570	0	21709	N.D.	17.058 #
10) L2 AR-1221-3	4.752	3.702	33425943	13398106	2809.286	3132.875
11) L3 AR-1232-1	4.752	3.702	33425943	13398106	3904.830	3351.550
13) L3 AR-1232-3	0.000	4.536	0	96810	N.D.	37.125 #
14) L3 AR-1232-4	0.000	4.631	0	1044632	N.D.	468.600 #
15) L3 AR-1232-5	0.000	4.803	0	444822	N.D.	167.244 #
16) L4 AR-1242-1	0.000	4.312	0	82016	N.D.	13.975 #
18) L4 AR-1242-3	0.000	4.536	0	96810	N.D.	19.172 #
19) L4 AR-1242-4	0.000	4.631	0	1044632	N.D.	218.681 #
20) L4 AR-1242-5	6.449	5.124	580405	1399162	62.224	217.177 #
21) L5 AR-1248-1	0.000	4.312	0	82016	N.D.	17.777 #
22) L5 AR-1248-2	0.000	4.592	0	482358	N.D.	69.257 #
23) L5 AR-1248-3	0.000	4.631	0	1044632	N.D.	149.443 #
24) L5 AR-1248-4	6.410	4.803	1076013	444822	64.543	47.670 #
25) L5 AR-1248-5	6.449	5.165	580405	374058	37.179	38.904
26) L6 AR-1254-1	6.380	5.124	1841174	1399162	83.848	72.972
27) L6 AR-1254-2	6.596	5.265	5880405	2933626	173.924	168.994
28) L6 AR-1254-3	6.964	5.647	6967702	6112134	200.090	215.945
29) L6 AR-1254-4	7.247	5.869	7828478	4753803	338.456	268.954
30) L6 AR-1254-5	7.685	6.273	65419899	33356731	2664.523	1247.621 #
31) L7 AR-1260-1	7.126	5.774	3443551	4184703	133.856	202.397 #
32) L7 AR-1260-2	7.379	5.957	16514617	6728001	558.257	234.297 #
33) L7 AR-1260-3	7.685	6.101	65419899	2658743	3086.806	107.813 #
34) L7 AR-1260-4	7.953	6.557	6366649	1028170	278.228	49.850 #
35) L7 AR-1260-5	8.277	6.797	2619151	1995295	59.465	38.399 #
36) L8 AR-1262-1	7.685	6.315	65419899	5178160	2651.750	184.015 #
37) L8 AR-1262-2	8.277	6.797	2619151	1995295	66.921	44.417 #
38) L8 AR-1262-3	8.597	7.048	2163524	2054580	85.637	114.434 #
39) L8 AR-1262-4	8.644	7.131	740620	2200759	37.736	74.806 #
40) L8 AR-1262-5	0.000	7.613	0	457561	N.D.	39.427 #
41) L9 AR-1268-1	8.597	7.048	2163524	2054580	42.882	37.304
42) L9 AR-1268-2	8.644	7.131	740620	2200759	16.282	46.170 #
43) L9 AR-1268-3	0.000	7.339	0	36815	N.D.	0.855 #

Data Path : Z:\pestpcbsrv\HPCHEM1\ECD_0\Data\PO103018\
 Data File : PO050753.D
 Signal(s) : Signal #1: ECD1A.CH Signal #2: ECD2B.CH
 Acq On : 30 Oct 2018 12:56
 Operator : SM/SJ
 Sample : J5515-01RE
 Misc :
 ALS Vial : 4 Sample Multiplier: 1

Instrument :
 ECD_0
 ClientSampleId :
 NON-UST-1ARE

Integration File signal 1: autoint1.e
 Integration File signal 2: autoint2.e
 Quant Time: Oct 30 13:21:53 2018
 Quant Method : Z:\pestpcbsrv\HPCHEM1\ECD_0\methods\PO102918.M
 Quant Title : GC EXTRACTABLES
 QLast Update : Tue Oct 30 07:48:38 2018
 Response via : Initial Calibration
 Integrator: ChemStation 6890 Scale Mode: Small noise peaks clipped

Volume Inj. : 2 µl
 Signal #1 Phase : ZB-MR1 Signal #2 Phase: ZB-MR2
 Signal #1 Info : 30Mx0.32mmx 0.50µ Signal #2 Info : 30M x 0.32mm x 0.25µm

Compound	RT#1	RT#2	Resp#1	Resp#2	ng/ml	ng/ml
44) L9 AR-1268-4	0.000	7.613	0	457561	N.D.	32.752 #

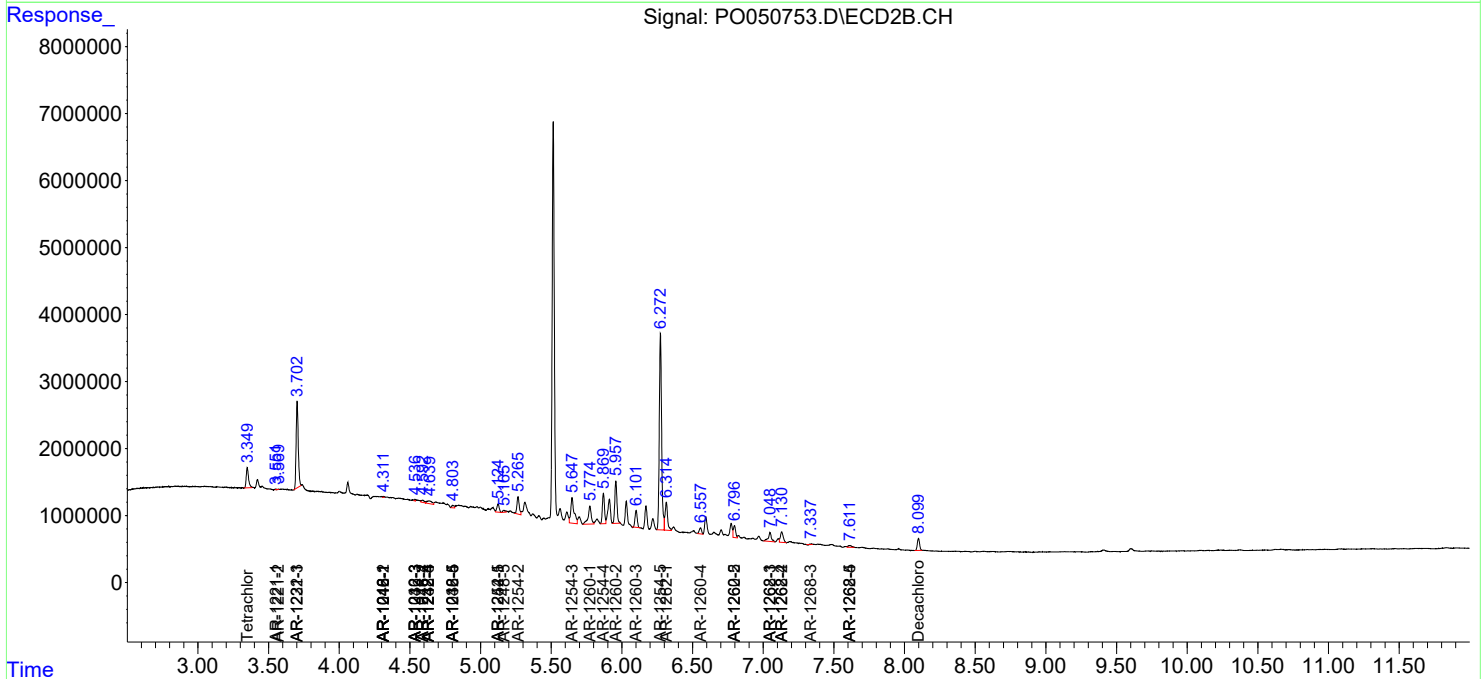
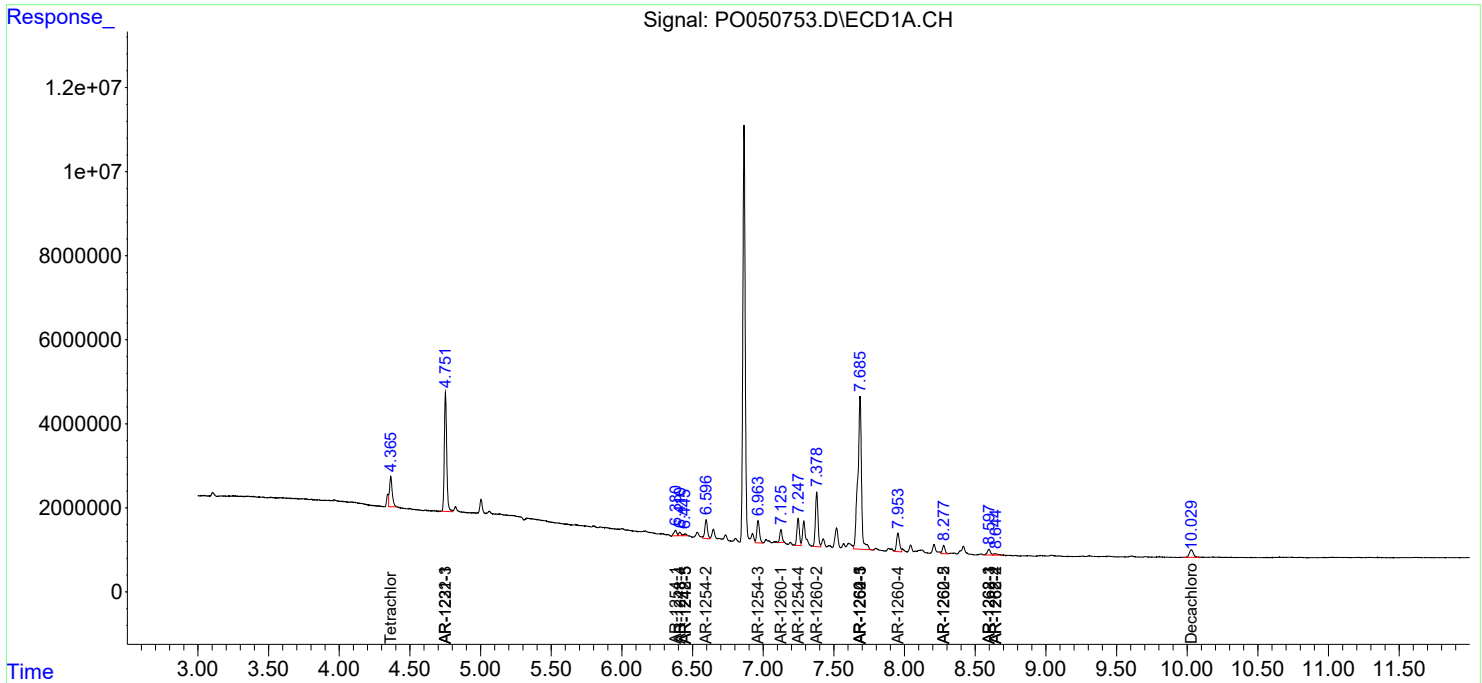
(f)=RT Delta > 1/2 Window (#)=Amounts differ by > 25% (m)=manual int.

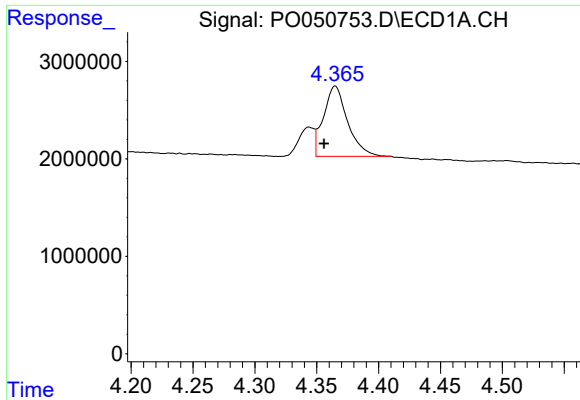
Data Path : Z:\pestpcbsrv\HPCHEM1\ECD_O\Data\PO103018\
 Data File : P0050753.D
 Signal(s) : Signal #1: ECD1A.CH Signal #2: ECD2B.CH
 Acq On : 30 Oct 2018 12:56
 Operator : SM/SJ
 Sample : J5515-01RE
 Misc :
 ALS Vial : 4 Sample Multiplier: 1

Instrument :
 ECD_O
 ClientSampled :
 NON-UST-1ARE

Integration File signal 1: autoint1.e
 Integration File signal 2: autoint2.e
 Quant Time: Oct 30 13:21:53 2018
 Quant Method : Z:\pestpcbsrv\HPCHEM1\ECD_O\methods\PO102918.M
 Quant Title : GC EXTRACTABLES
 QLast Update : Tue Oct 30 07:48:38 2018
 Response via : Initial Calibration
 Integrator: ChemStation 6890 Scale Mode: Small noise peaks clipped

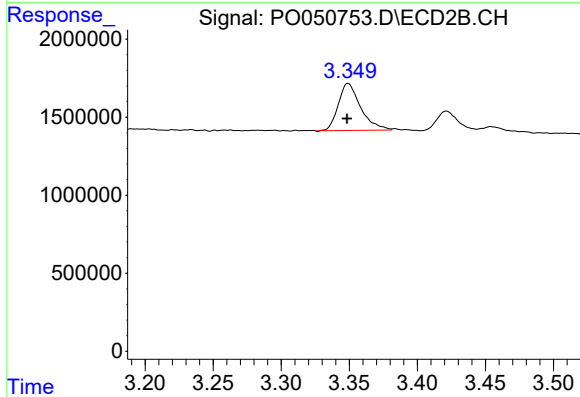
Volume Inj. : 2 µl
 Signal #1 Phase : ZB-MR1 Signal #2 Phase: ZB-MR2
 Signal #1 Info : 30Mx0.32mmx 0.50µ Signal #2 Info : 30M x 0.32mm x 0.25µm



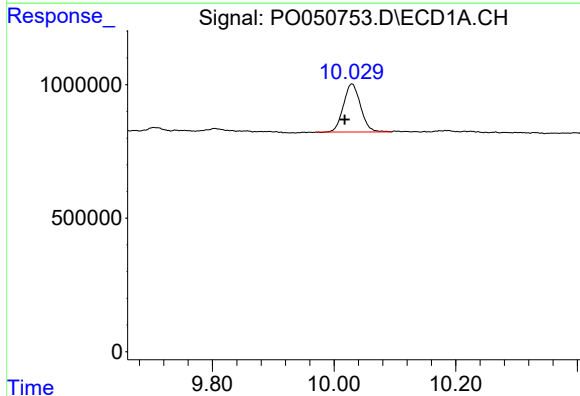


#1 Tetrachloro-m-xylene
 R.T.: 4.365 min
 Delta R.T.: 0.009 min
 Response: 9782229
 Conc: 19.57 ng/ml

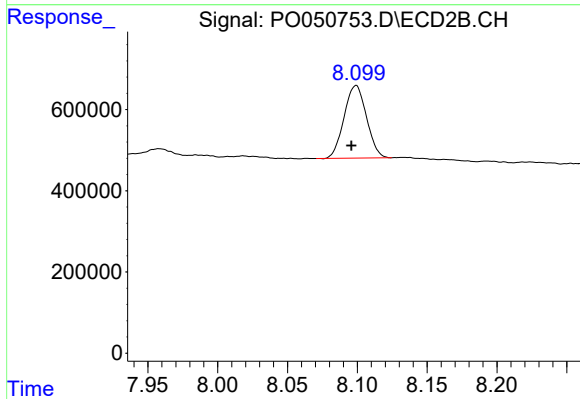
Instrument :
 ECD_O
 ClientSampleId :
 NON-UST-1ARE



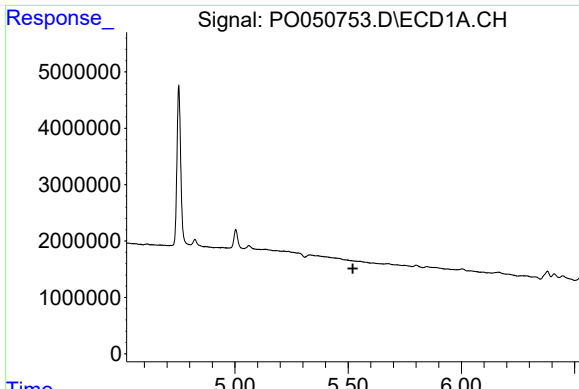
#1 Tetrachloro-m-xylene
 R.T.: 3.349 min
 Delta R.T.: 0.000 min
 Response: 3429865
 Conc: 15.78 ng/ml



#2 Decachlorobiphenyl
 R.T.: 10.029 min
 Delta R.T.: 0.012 min
 Response: 3506574
 Conc: 11.28 ng/ml



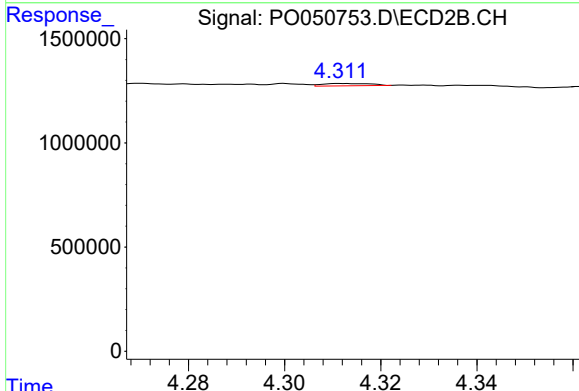
#2 Decachlorobiphenyl
 R.T.: 8.099 min
 Delta R.T.: 0.003 min
 Response: 1996791
 Conc: 7.81 ng/ml



#3 AR-1016-1

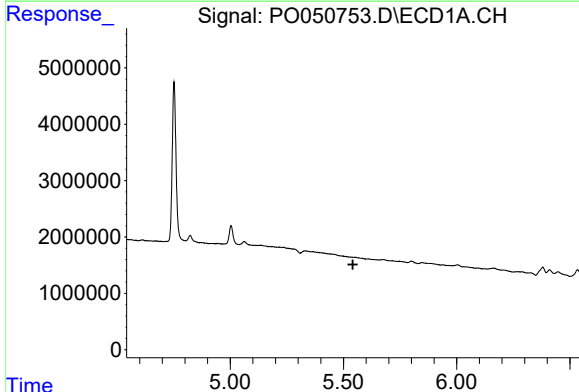
R.T.: 0.000 min
 Exp R.T. : 5.521 min
 Response: 0
 Conc: N.D.

Instrument :
 ECD_O
 ClientSampleId :
 NON-UST-1ARE



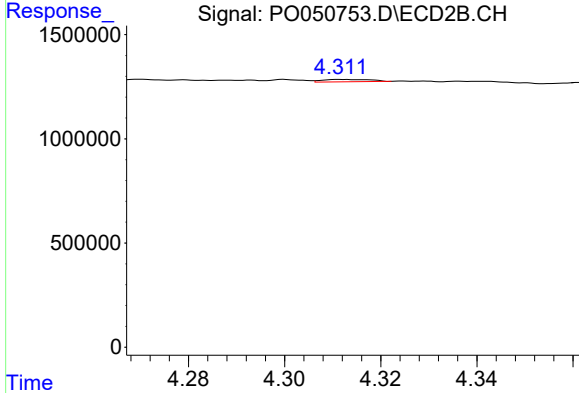
#3 AR-1016-1

R.T.: 4.312 min
 Delta R.T.: -0.054 min
 Response: 82016
 Conc: 8.92 ng/ml



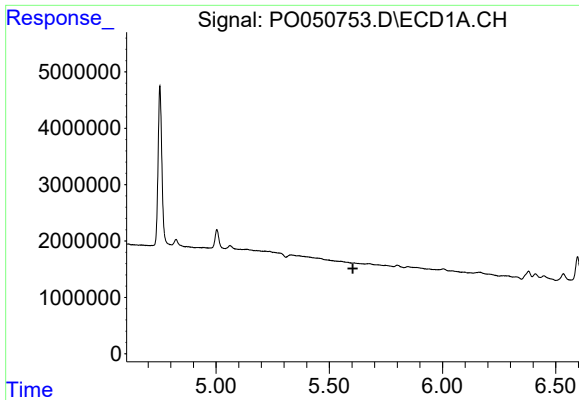
#4 AR-1016-2

R.T.: 0.000 min
 Exp R.T. : 5.542 min
 Response: 0
 Conc: N.D.



#4 AR-1016-2

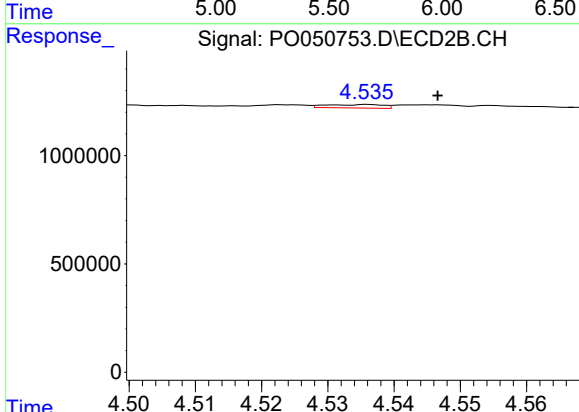
R.T.: 4.312 min
 Delta R.T.: -0.070 min
 Response: 82016
 Conc: 5.29 ng/ml



#5 AR-1016-3

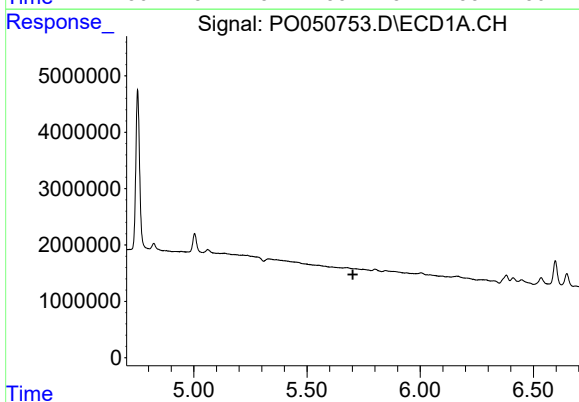
R.T.: 0.000 min
 Exp R.T.: 5.604 min
 Response: 0
 Conc: N.D.

Instrument :
 ECD_O
 ClientSampleId :
 NON-UST-1ARE



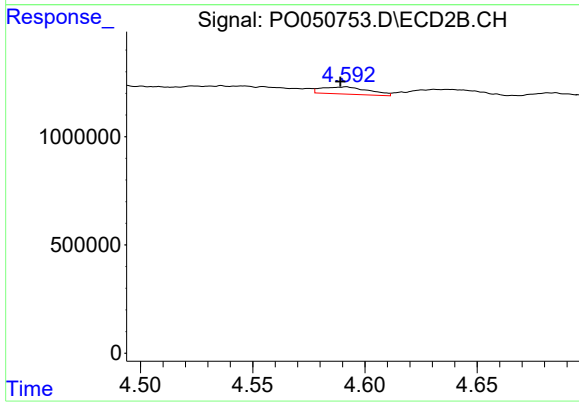
#5 AR-1016-3

R.T.: 4.536 min
 Delta R.T.: -0.010 min
 Response: 96810
 Conc: 12.09 ng/ml



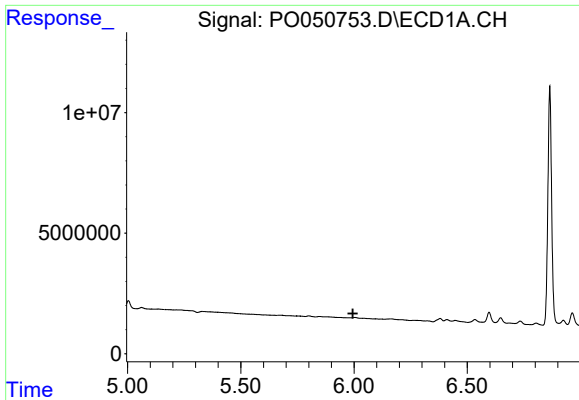
#6 AR-1016-4

R.T.: 0.000 min
 Exp R.T.: 5.703 min
 Response: 0
 Conc: N.D.



#6 AR-1016-4

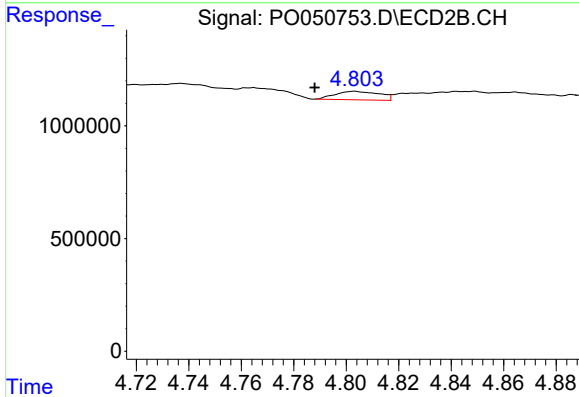
R.T.: 4.592 min
 Delta R.T.: 0.003 min
 Response: 482358
 Conc: 79.27 ng/ml



#7 AR-1016-5

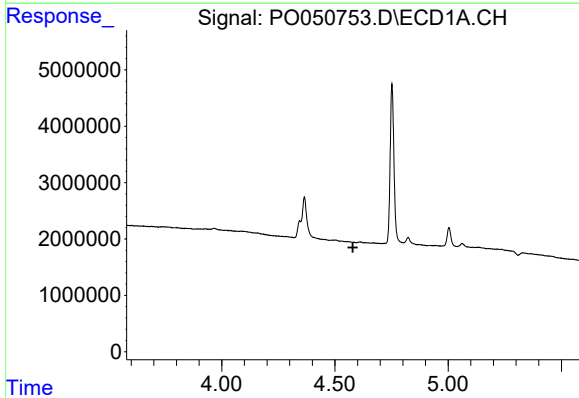
R.T.: 0.000 min
 Exp R.T.: 5.995 min
 Response: 0
 Conc: N.D.

Instrument :
 ECD_O
ClientSampleId :
 NON-UST-1ARE



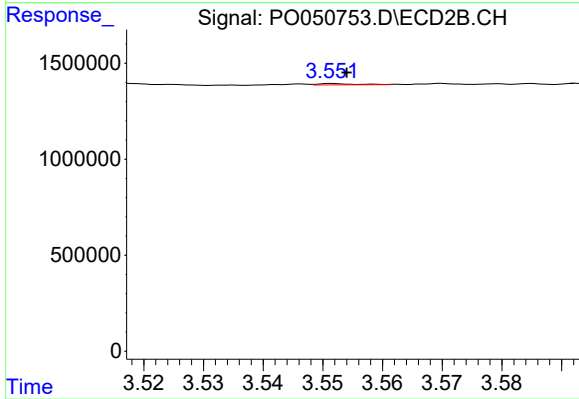
#7 AR-1016-5

R.T.: 4.803 min
 Delta R.T.: 0.015 min
 Response: 444822
 Conc: 51.55 ng/ml



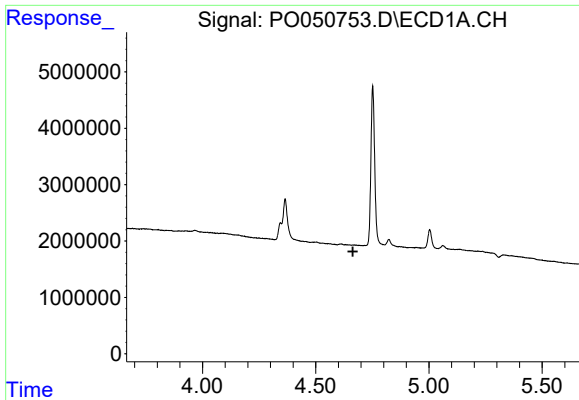
#8 AR-1221-1

R.T.: 0.000 min
 Exp R.T.: 4.579 min
 Response: 0
 Conc: N.D.



#8 AR-1221-1

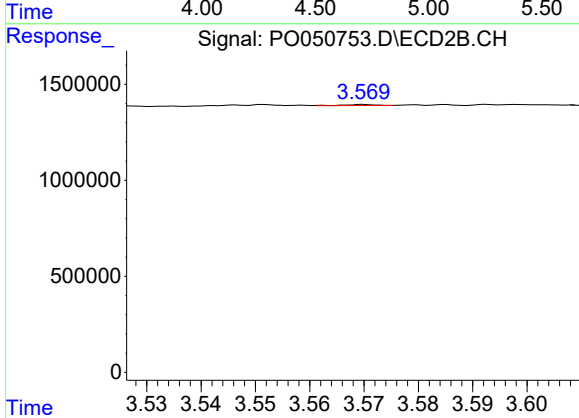
R.T.: 3.552 min
 Delta R.T.: -0.002 min
 Response: 32157
 Conc: 19.02 ng/ml



#9 AR-1221-2

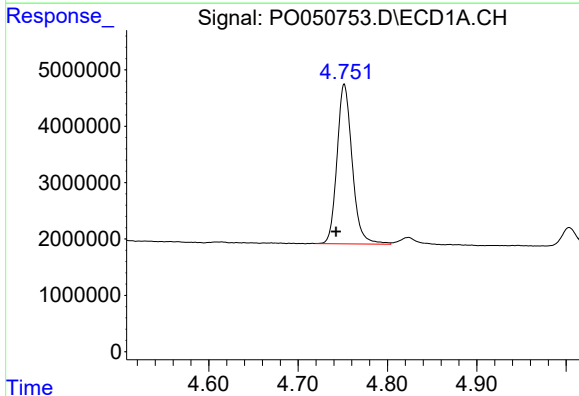
R.T.: 0.000 min
 Exp R.T.: 4.664 min
 Response: 0
 Conc: N.D.

Instrument :
 ECD_O
 ClientSampleId :
 NON-UST-1ARE



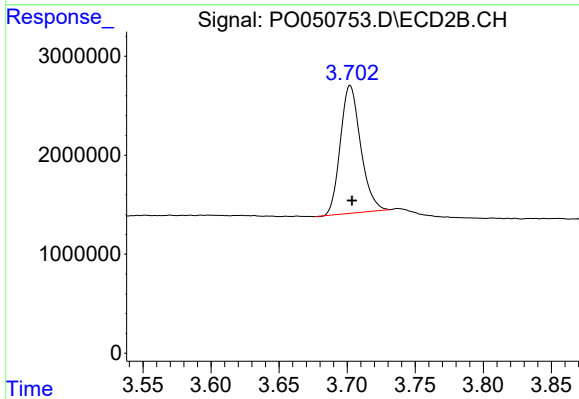
#9 AR-1221-2

R.T.: 3.570 min
 Delta R.T.: -0.061 min
 Response: 21709
 Conc: 17.06 ng/ml



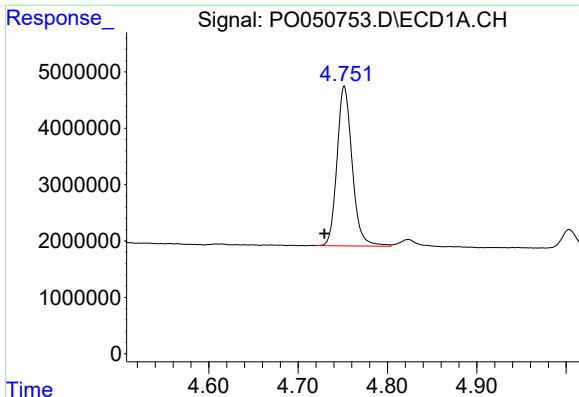
#10 AR-1221-3

R.T.: 4.752 min
 Delta R.T.: 0.009 min
 Response: 33425943
 Conc: 2809.29 ng/ml



#10 AR-1221-3

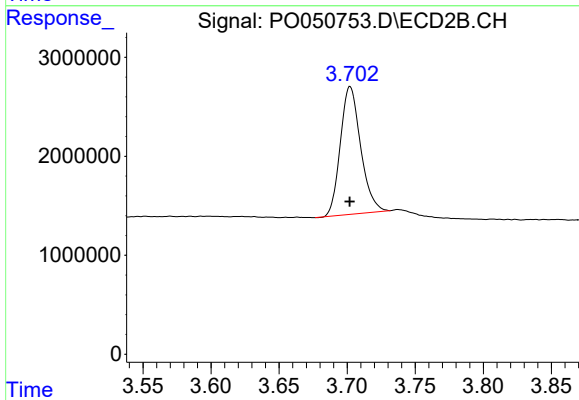
R.T.: 3.702 min
 Delta R.T.: -0.001 min
 Response: 13398106
 Conc: 3132.87 ng/ml



#11 AR-1232-1

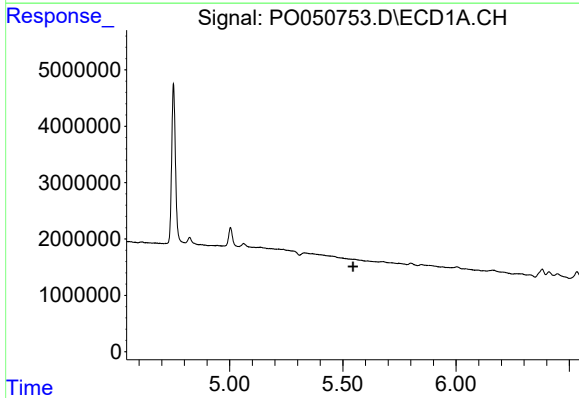
R.T.: 4.752 min
 Delta R.T.: 0.022 min
 Response: 33425943
 Conc: 3904.83 ng/ml

Instrument :
 ECD_O
 ClientSampleId :
 NON-UST-1ARE



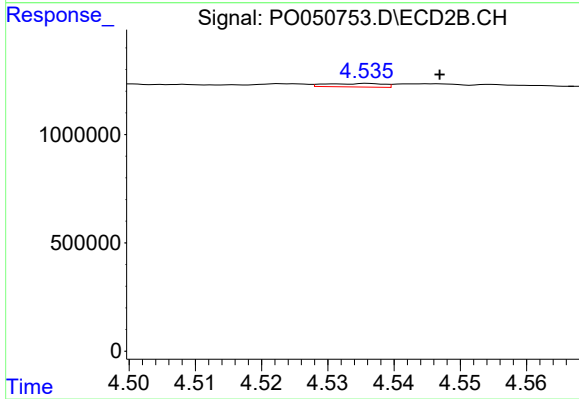
#11 AR-1232-1

R.T.: 3.702 min
 Delta R.T.: 0.000 min
 Response: 13398106
 Conc: 3351.55 ng/ml



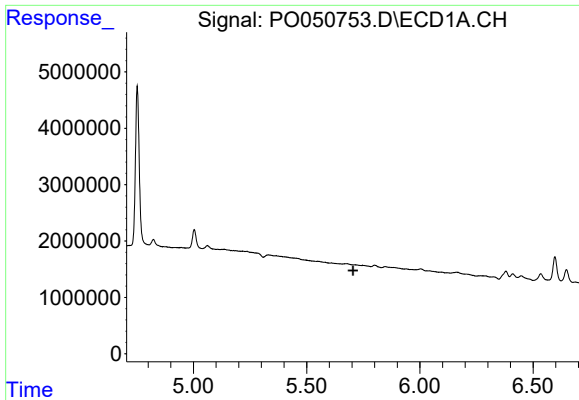
#13 AR-1232-3

R.T.: 0.000 min
 Exp R.T. : 5.545 min
 Response: 0
 Conc: N.D.



#13 AR-1232-3

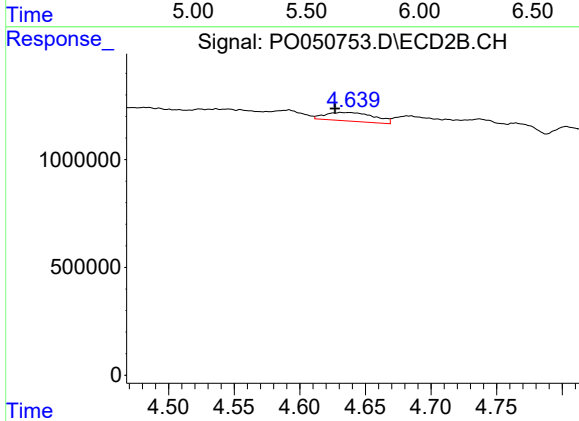
R.T.: 4.536 min
 Delta R.T.: -0.011 min
 Response: 96810
 Conc: 37.13 ng/ml



#14 AR-1232-4

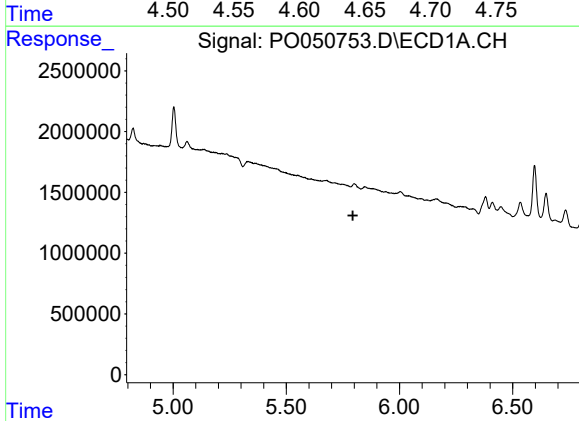
R.T.: 0.000 min
 Exp R.T. : 5.705 min
 Response: 0
 Conc: N.D.

Instrument :
 ECD_O
 ClientSampleId :
 NON-UST-1ARE



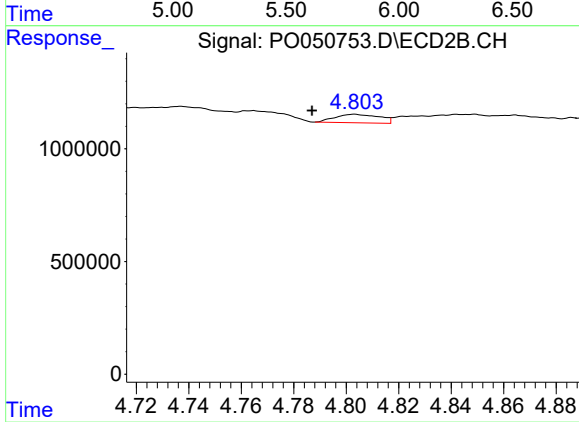
#14 AR-1232-4

R.T.: 4.631 min
 Delta R.T.: 0.004 min
 Response: 1044632
 Conc: 468.60 ng/ml



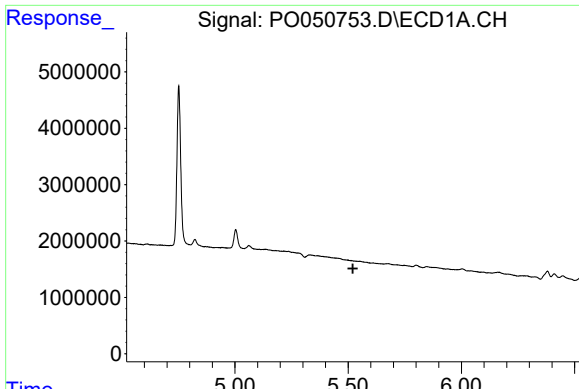
#15 AR-1232-5

R.T.: 0.000 min
 Exp R.T. : 5.794 min
 Response: 0
 Conc: N.D.



#15 AR-1232-5

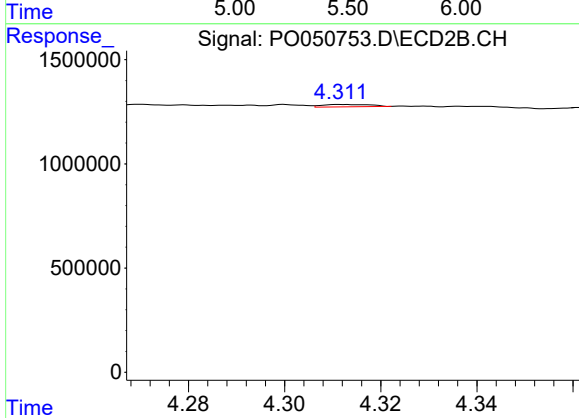
R.T.: 4.803 min
 Delta R.T.: 0.016 min
 Response: 444822
 Conc: 167.24 ng/ml



#16 AR-1242-1

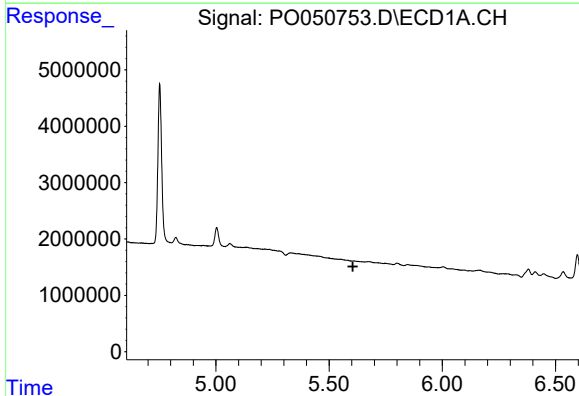
R.T.: 0.000 min
 Exp R.T. : 5.521 min
 Response: 0
 Conc: N.D.

Instrument :
 ECD_O
 ClientSampleId :
 NON-UST-1ARE



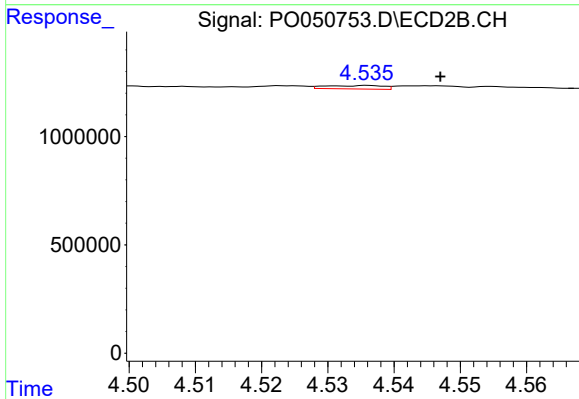
#16 AR-1242-1

R.T.: 4.312 min
 Delta R.T.: -0.055 min
 Response: 82016
 Conc: 13.97 ng/ml



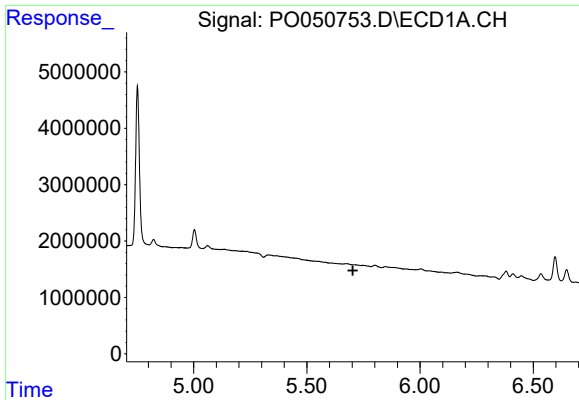
#18 AR-1242-3

R.T.: 0.000 min
 Exp R.T. : 5.605 min
 Response: 0
 Conc: N.D.



#18 AR-1242-3

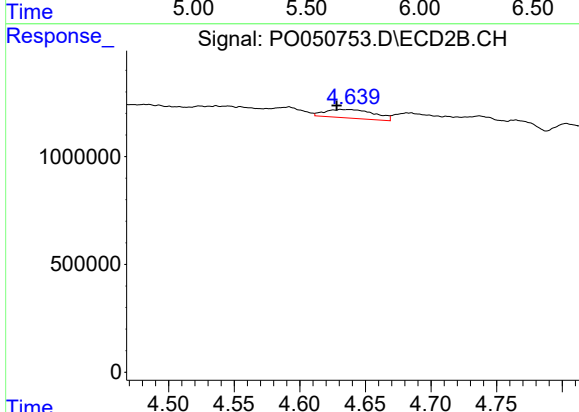
R.T.: 4.536 min
 Delta R.T.: -0.011 min
 Response: 96810
 Conc: 19.17 ng/ml



#19 AR-1242-4

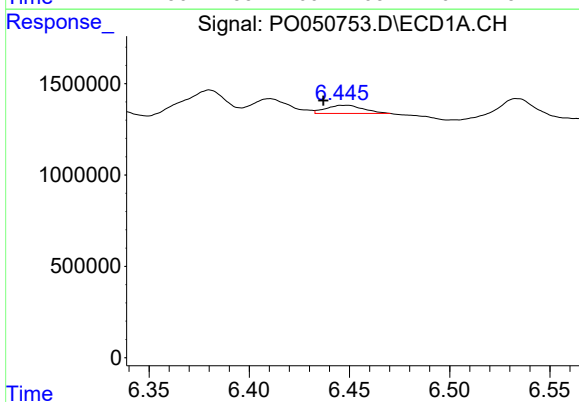
R.T.: 0.000 min
 Exp R.T.: 5.703 min
 Response: 0
 Conc: N.D.

Instrument :
 ECD_O
ClientSampleId :
 NON-UST-1ARE



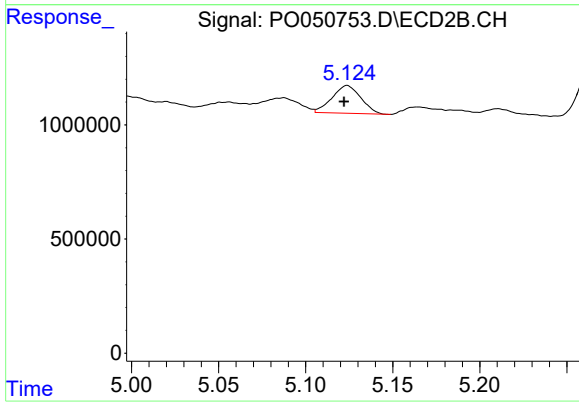
#19 AR-1242-4

R.T.: 4.631 min
 Delta R.T.: 0.003 min
 Response: 1044632
 Conc: 218.68 ng/ml



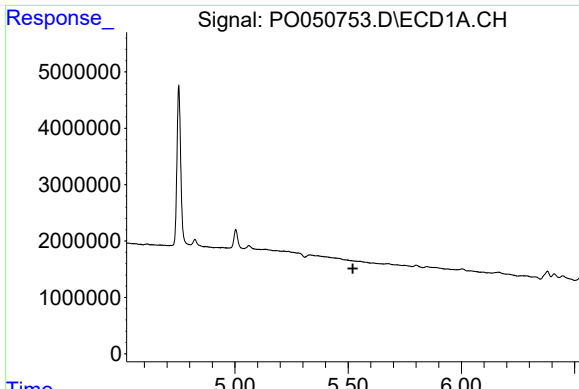
#20 AR-1242-5

R.T.: 6.449 min
 Delta R.T.: 0.012 min
 Response: 580405
 Conc: 62.22 ng/ml



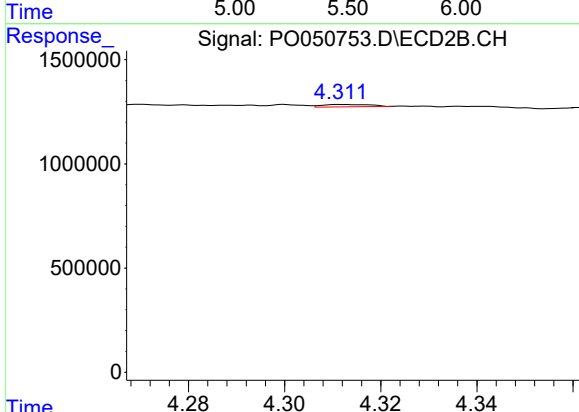
#20 AR-1242-5

R.T.: 5.124 min
 Delta R.T.: 0.002 min
 Response: 1399162
 Conc: 217.18 ng/ml

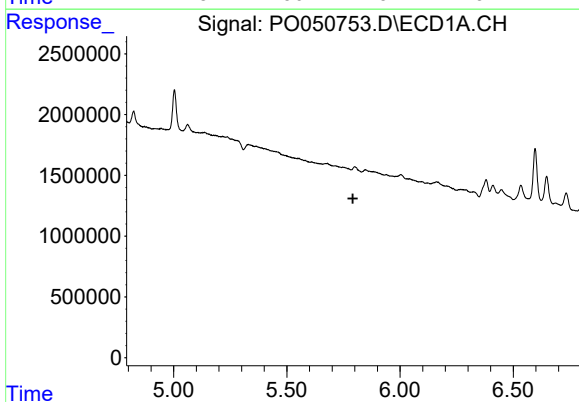


#21 AR-1248-1
 R.T.: 0.000 min
 Exp R.T. : 5.521 min
 Response: 0
 Conc: N.D.

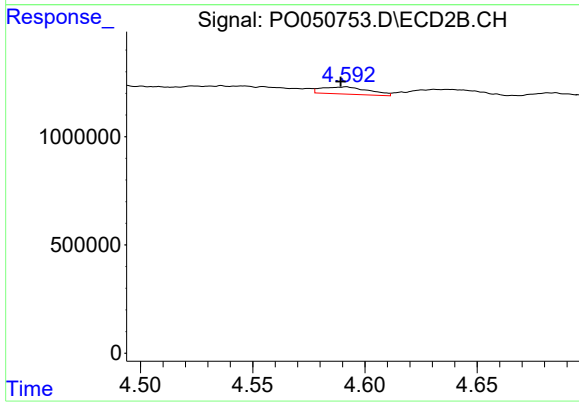
Instrument :
 ECD_O
 ClientSampleId :
 NON-UST-1ARE



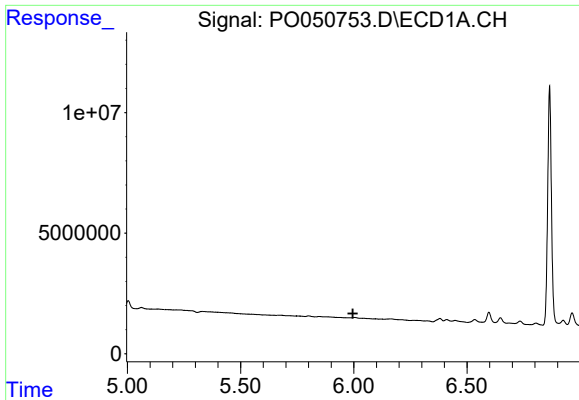
#21 AR-1248-1
 R.T.: 4.312 min
 Delta R.T.: -0.054 min
 Response: 82016
 Conc: 17.78 ng/ml



#22 AR-1248-2
 R.T.: 0.000 min
 Exp R.T. : 5.792 min
 Response: 0
 Conc: N.D.



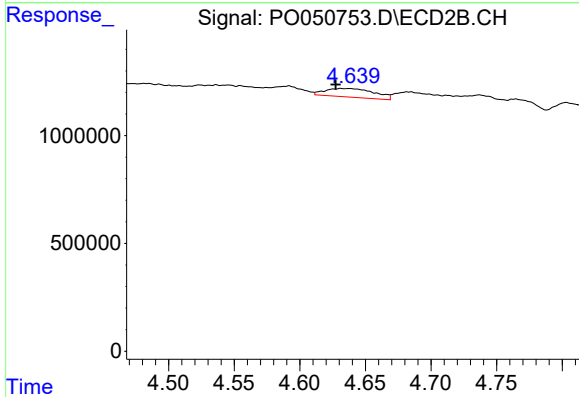
#22 AR-1248-2
 R.T.: 4.592 min
 Delta R.T.: 0.003 min
 Response: 482358
 Conc: 69.26 ng/ml



#23 AR-1248-3

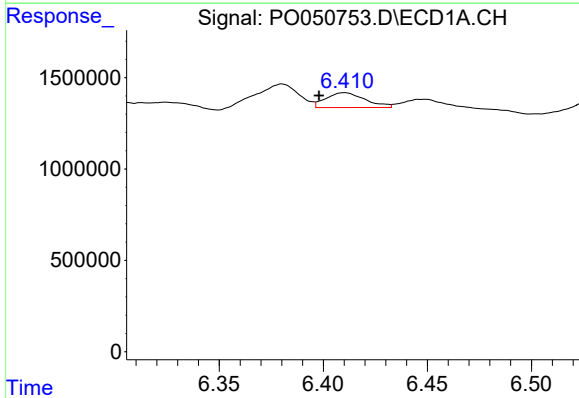
R.T.: 0.000 min
 Exp R.T.: 5.996 min
 Response: 0
 Conc: N.D.

Instrument :
 ECD_O
ClientSampled :
 NON-UST-1ARE



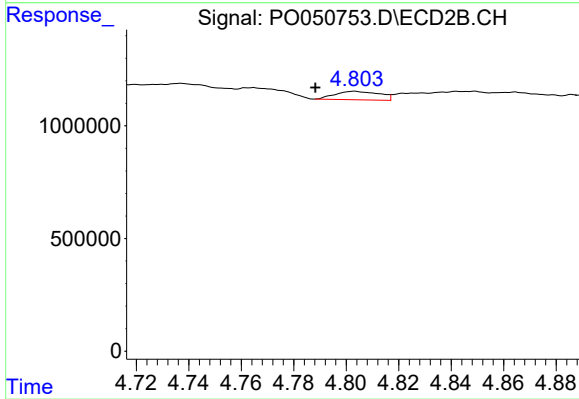
#23 AR-1248-3

R.T.: 4.631 min
 Delta R.T.: 0.004 min
 Response: 1044632
 Conc: 149.44 ng/ml



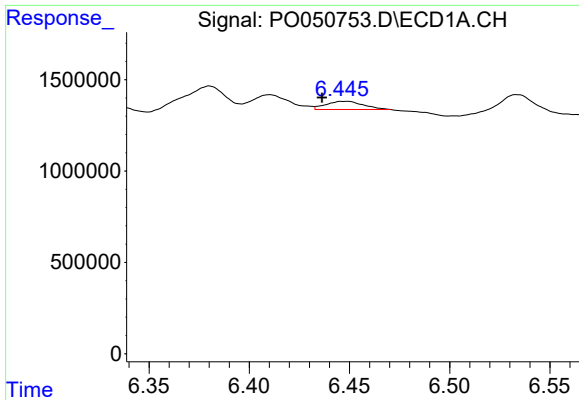
#24 AR-1248-4

R.T.: 6.410 min
 Delta R.T.: 0.012 min
 Response: 1076013
 Conc: 64.54 ng/ml



#24 AR-1248-4

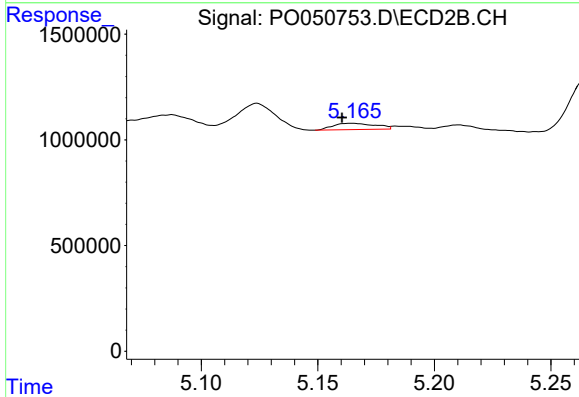
R.T.: 4.803 min
 Delta R.T.: 0.015 min
 Response: 444822
 Conc: 47.67 ng/ml



#25 AR-1248-5

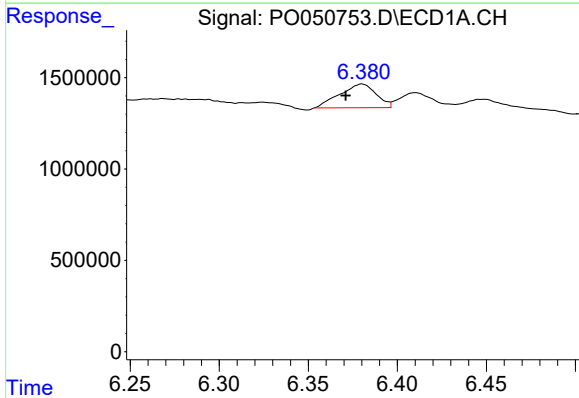
R.T.: 6.449 min
 Delta R.T.: 0.013 min
 Response: 580405
 Conc: 37.18 ng/ml

Instrument :
 ECD_O
 ClientSampleId :
 NON-UST-1ARE



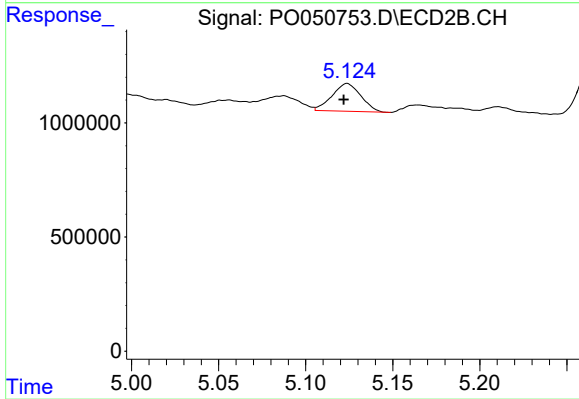
#25 AR-1248-5

R.T.: 5.165 min
 Delta R.T.: 0.005 min
 Response: 374058
 Conc: 38.90 ng/ml



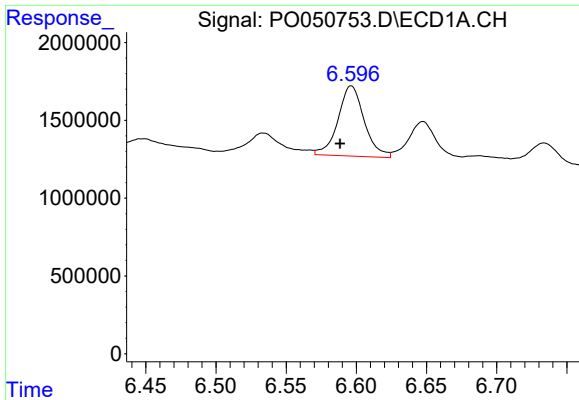
#26 AR-1254-1

R.T.: 6.380 min
 Delta R.T.: 0.009 min
 Response: 1841174
 Conc: 83.85 ng/ml



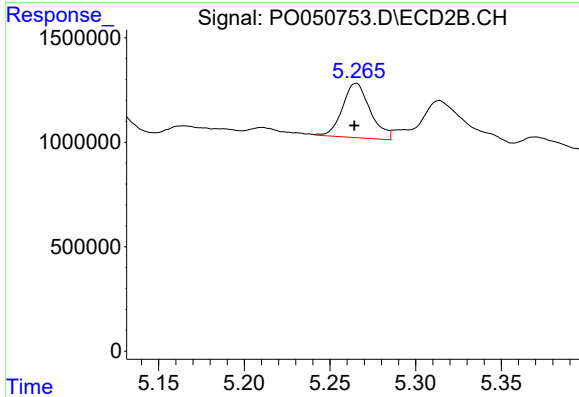
#26 AR-1254-1

R.T.: 5.124 min
 Delta R.T.: 0.002 min
 Response: 1399162
 Conc: 72.97 ng/ml

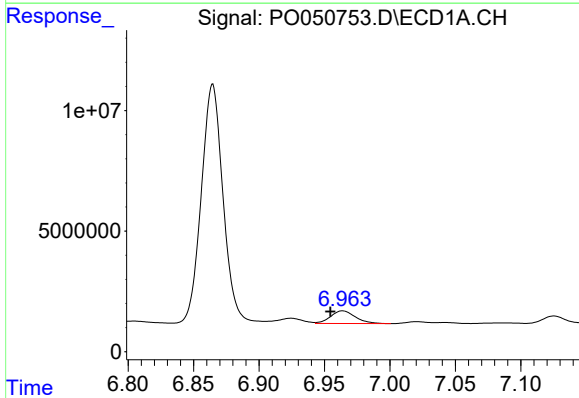


#27 AR-1254-2
 R.T.: 6.596 min
 Delta R.T.: 0.008 min
 Response: 5880405
 Conc: 173.92 ng/ml

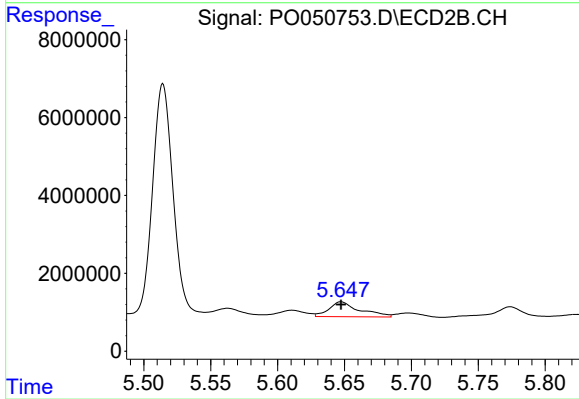
Instrument :
 ECD_O
 ClientSampleId :
 NON-UST-1ARE



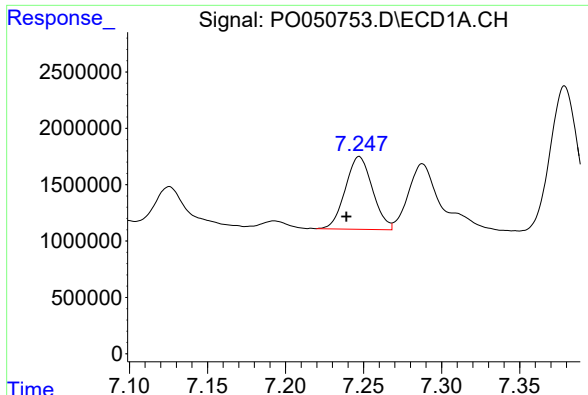
#27 AR-1254-2
 R.T.: 5.265 min
 Delta R.T.: 0.001 min
 Response: 2933626
 Conc: 168.99 ng/ml



#28 AR-1254-3
 R.T.: 6.964 min
 Delta R.T.: 0.009 min
 Response: 6967702
 Conc: 200.09 ng/ml

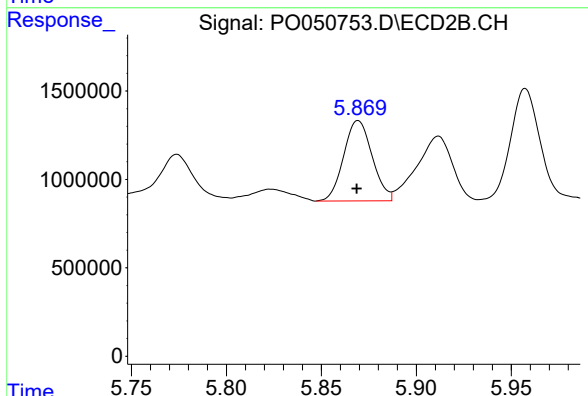


#28 AR-1254-3
 R.T.: 5.647 min
 Delta R.T.: 0.000 min
 Response: 6112134
 Conc: 215.94 ng/ml

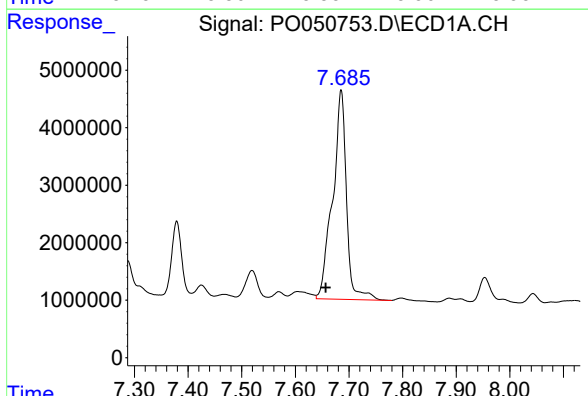


#29 AR-1254-4
 R.T.: 7.247 min
 Delta R.T.: 0.008 min
 Response: 7828478
 Conc: 338.46 ng/ml

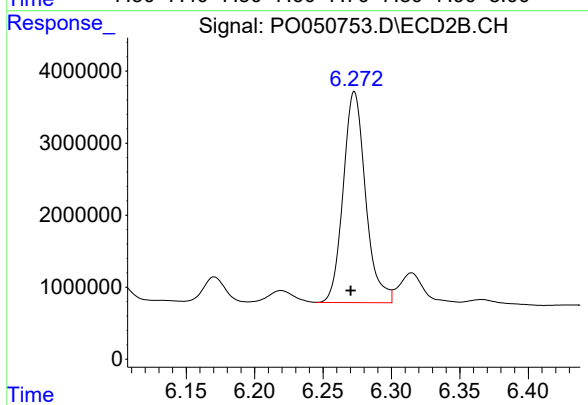
Instrument :
 ECD_O
 ClientSampleId :
 NON-UST-1ARE



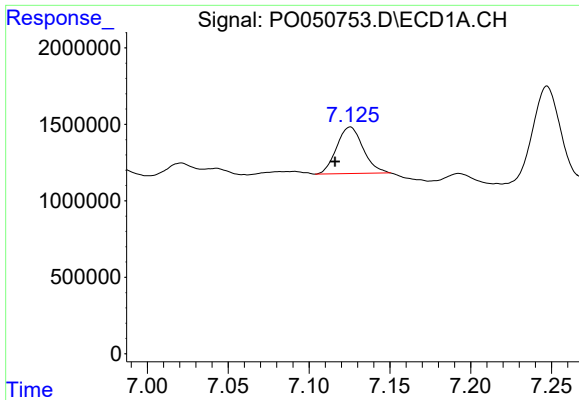
#29 AR-1254-4
 R.T.: 5.869 min
 Delta R.T.: 0.000 min
 Response: 4753803
 Conc: 268.95 ng/ml



#30 AR-1254-5
 R.T.: 7.685 min
 Delta R.T.: 0.029 min
 Response: 65419899
 Conc: 2664.52 ng/ml

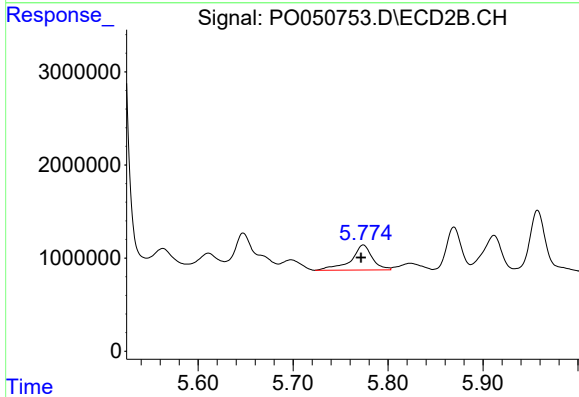


#30 AR-1254-5
 R.T.: 6.273 min
 Delta R.T.: 0.003 min
 Response: 33356731
 Conc: 1247.62 ng/ml

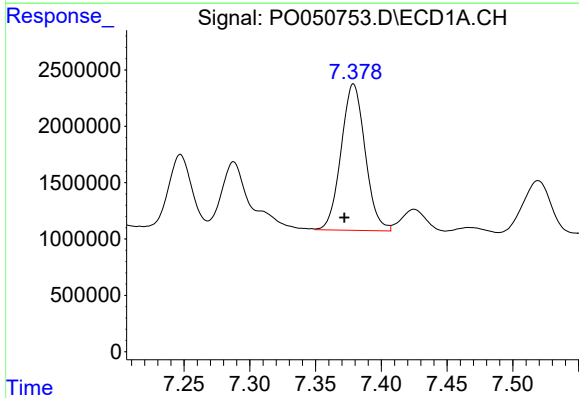


#31 AR-1260-1
 R.T.: 7.126 min
 Delta R.T.: 0.009 min
 Response: 3443551
 Conc: 133.86 ng/ml

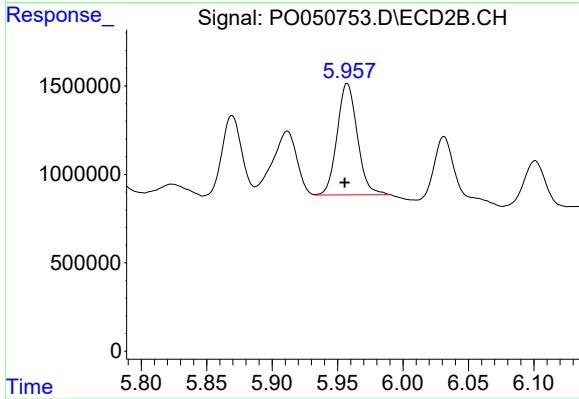
Instrument :
 ECD_O
ClientSampleId :
 NON-UST-1ARE



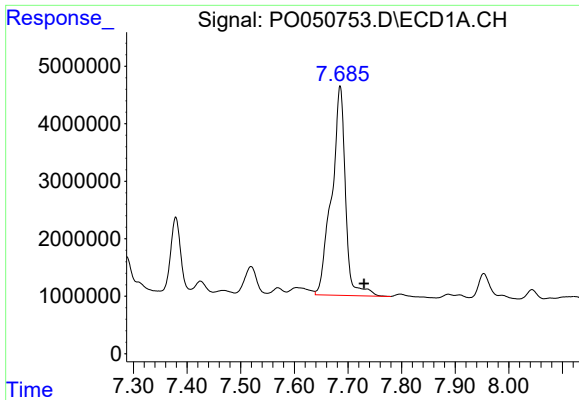
#31 AR-1260-1
 R.T.: 5.774 min
 Delta R.T.: 0.003 min
 Response: 4184703
 Conc: 202.40 ng/ml



#32 AR-1260-2
 R.T.: 7.379 min
 Delta R.T.: 0.007 min
 Response: 16514617
 Conc: 558.26 ng/ml



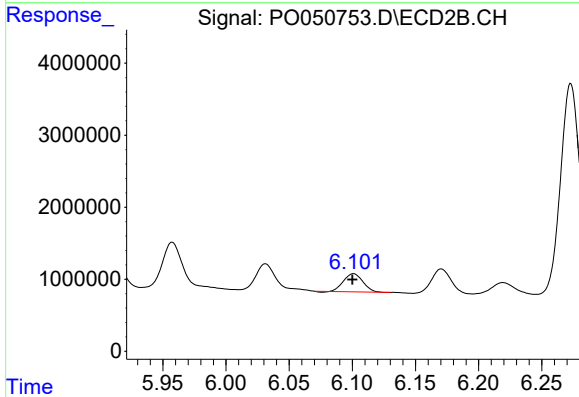
#32 AR-1260-2
 R.T.: 5.957 min
 Delta R.T.: 0.002 min
 Response: 6728001
 Conc: 234.30 ng/ml



#33 AR-1260-3

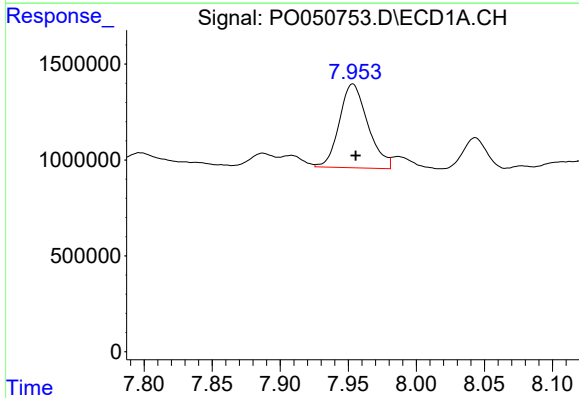
R.T.: 7.685 min
 Delta R.T.: -0.044 min
 Response: 65419899
 Conc: 3086.81 ng/ml

Instrument :
 ECD_O
ClientSampleId :
 NON-UST-1ARE



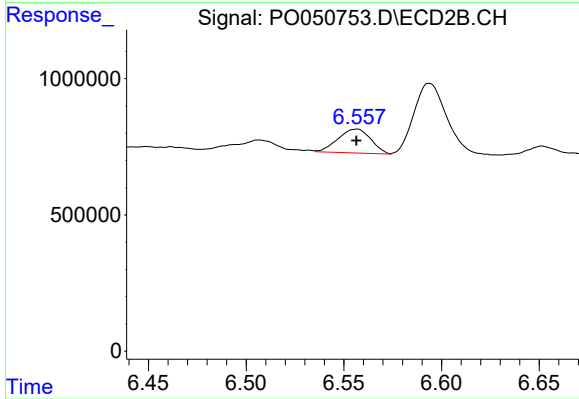
#33 AR-1260-3

R.T.: 6.101 min
 Delta R.T.: 0.000 min
 Response: 2658743
 Conc: 107.81 ng/ml



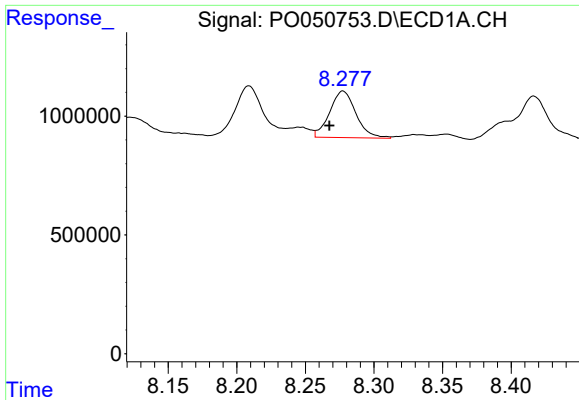
#34 AR-1260-4

R.T.: 7.953 min
 Delta R.T.: -0.002 min
 Response: 6366649
 Conc: 278.23 ng/ml



#34 AR-1260-4

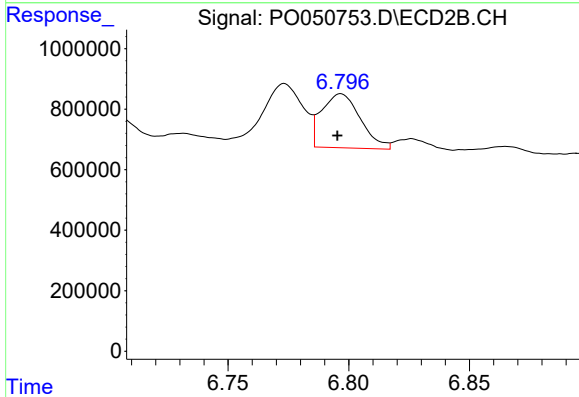
R.T.: 6.557 min
 Delta R.T.: 0.000 min
 Response: 1028170
 Conc: 49.85 ng/ml



#35 AR-1260-5

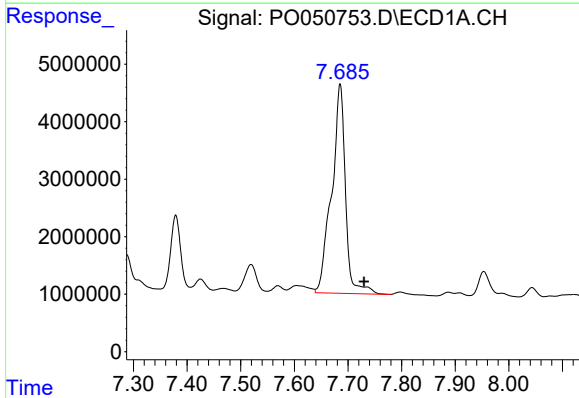
R.T.: 8.277 min
 Delta R.T.: 0.010 min
 Response: 2619151
 Conc: 59.47 ng/ml

Instrument :
 ECD_O
 ClientSampleId :
 NON-UST-1ARE



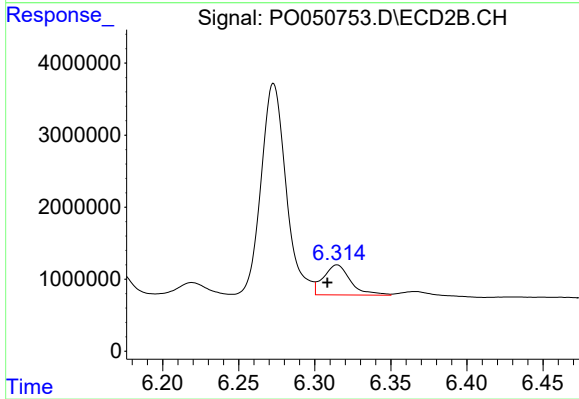
#35 AR-1260-5

R.T.: 6.797 min
 Delta R.T.: 0.002 min
 Response: 1995295
 Conc: 38.40 ng/ml



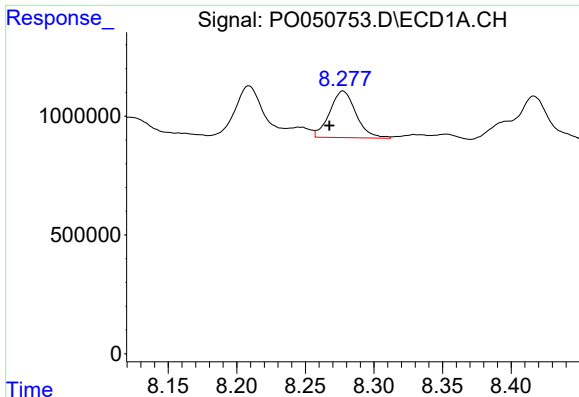
#36 AR-1262-1

R.T.: 7.685 min
 Delta R.T.: -0.045 min
 Response: 65419899
 Conc: 2651.75 ng/ml



#36 AR-1262-1

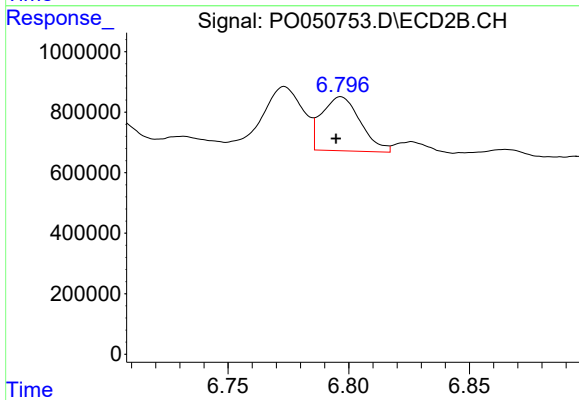
R.T.: 6.315 min
 Delta R.T.: 0.006 min
 Response: 5178160
 Conc: 184.02 ng/ml



#37 AR-1262-2

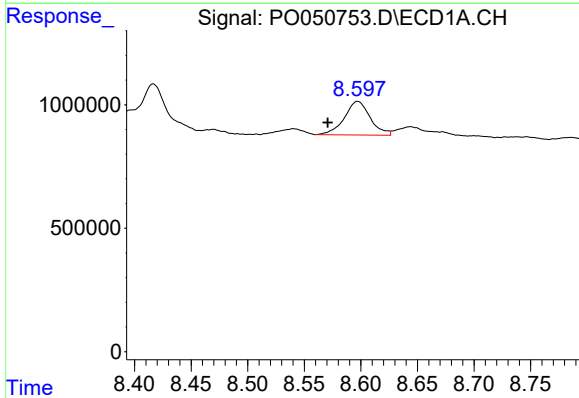
R.T.: 8.277 min
 Delta R.T.: 0.010 min
 Response: 2619151
 Conc: 66.92 ng/ml

Instrument :
 ECD_O
 ClientSampleId :
 NON-UST-1ARE



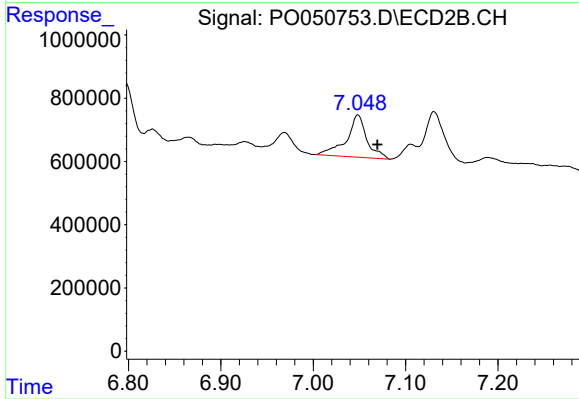
#37 AR-1262-2

R.T.: 6.797 min
 Delta R.T.: 0.002 min
 Response: 1995295
 Conc: 44.42 ng/ml



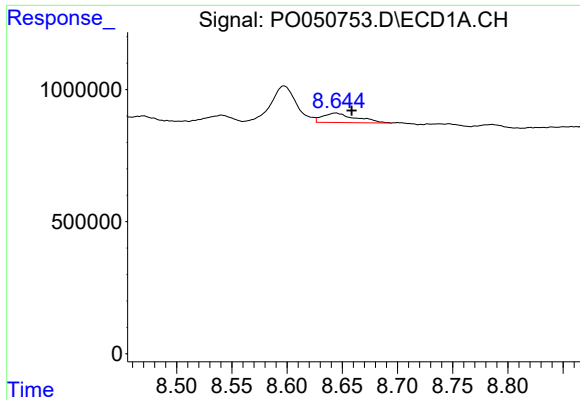
#38 AR-1262-3

R.T.: 8.597 min
 Delta R.T.: 0.026 min
 Response: 2163524
 Conc: 85.64 ng/ml



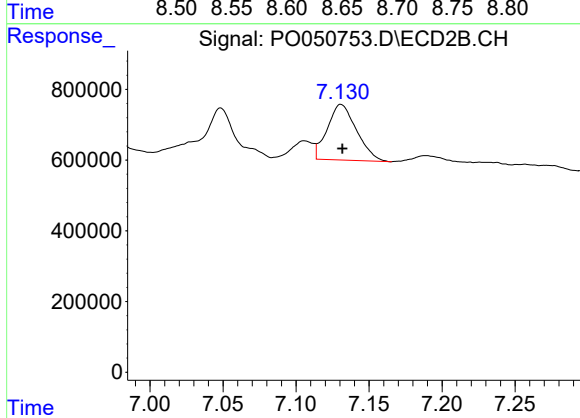
#38 AR-1262-3

R.T.: 7.048 min
 Delta R.T.: -0.021 min
 Response: 2054580
 Conc: 114.43 ng/ml

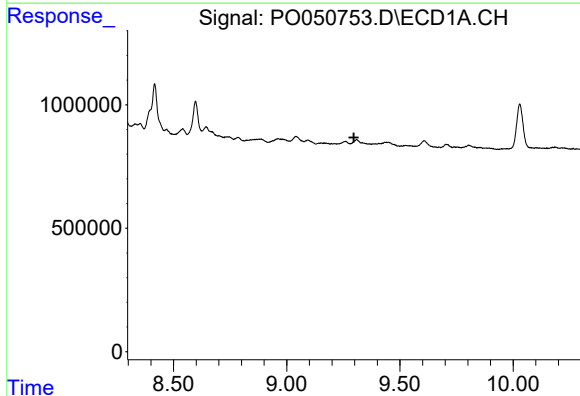


#39 AR-1262-4
 R.T.: 8.644 min
 Delta R.T.: -0.015 min
 Response: 740620
 Conc: 37.74 ng/ml

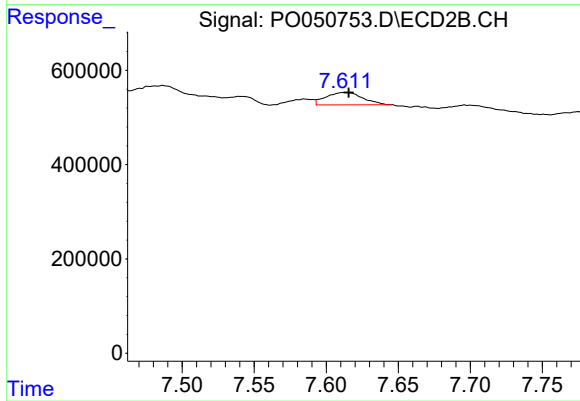
Instrument :
 ECD_O
 ClientSampleId :
 NON-UST-1ARE



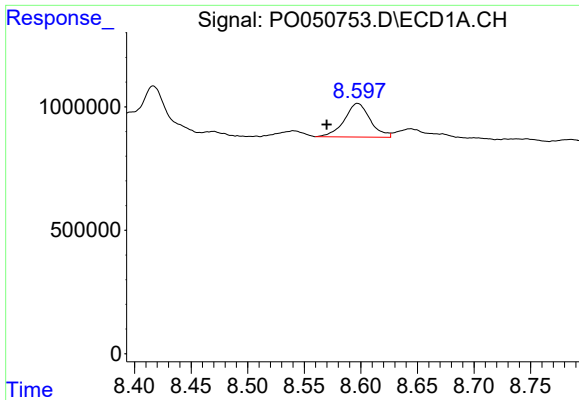
#39 AR-1262-4
 R.T.: 7.131 min
 Delta R.T.: 0.000 min
 Response: 2200759
 Conc: 74.81 ng/ml



#40 AR-1262-5
 R.T.: 0.000 min
 Exp R.T. : 9.297 min
 Response: 0
 Conc: N.D.



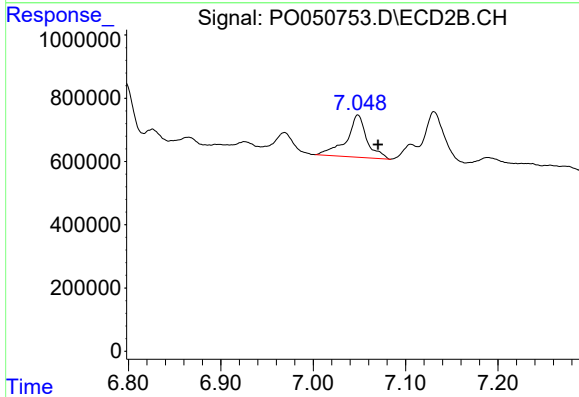
#40 AR-1262-5
 R.T.: 7.613 min
 Delta R.T.: -0.003 min
 Response: 457561
 Conc: 39.43 ng/ml



#41 AR-1268-1

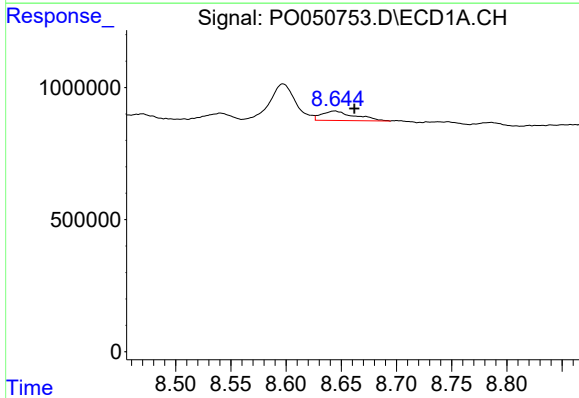
R.T.: 8.597 min
 Delta R.T.: 0.027 min
 Response: 2163524
 Conc: 42.88 ng/ml

Instrument :
 ECD_O
 ClientSampleId :
 NON-UST-1ARE



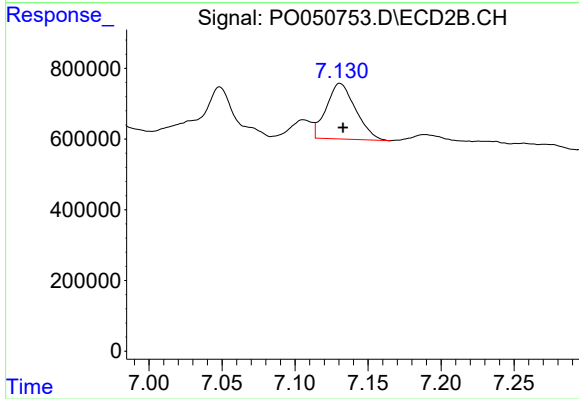
#41 AR-1268-1

R.T.: 7.048 min
 Delta R.T.: -0.022 min
 Response: 2054580
 Conc: 37.30 ng/ml



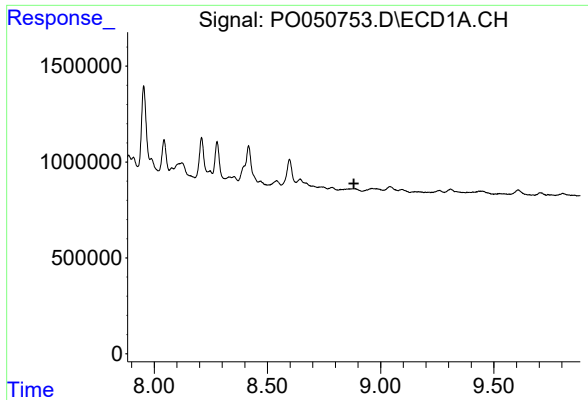
#42 AR-1268-2

R.T.: 8.644 min
 Delta R.T.: -0.018 min
 Response: 740620
 Conc: 16.28 ng/ml



#42 AR-1268-2

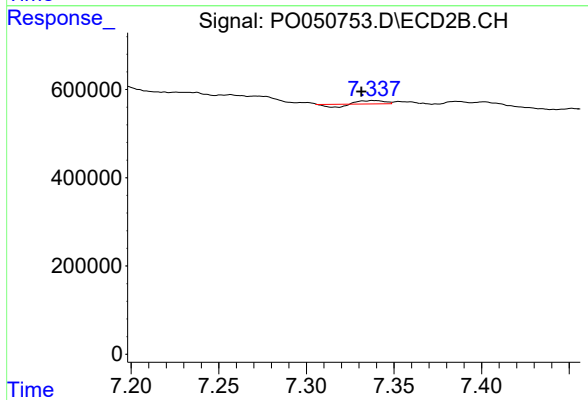
R.T.: 7.131 min
 Delta R.T.: -0.002 min
 Response: 2200759
 Conc: 46.17 ng/ml



#43 AR-1268-3

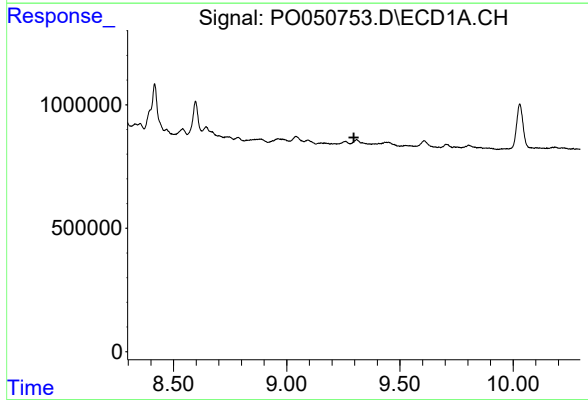
R.T.: 0.000 min
 Exp R.T. : 8.882 min
 Response: 0
 Conc: N.D.

Instrument :
 ECD_O
 ClientSampleId :
 NON-UST-1ARE



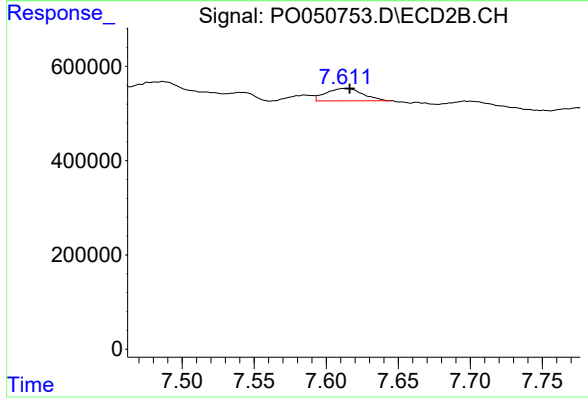
#43 AR-1268-3

R.T.: 7.339 min
 Delta R.T.: 0.007 min
 Response: 36815
 Conc: 0.85 ng/ml



#44 AR-1268-4

R.T.: 0.000 min
 Exp R.T. : 9.296 min
 Response: 0
 Conc: N.D.



#44 AR-1268-4

R.T.: 7.613 min
 Delta R.T.: -0.003 min
 Response: 457561
 Conc: 32.75 ng/ml