

Data Path : Z:\pestpcbsrv\HPCHEM1\ECD_0\Data\PO103018\
 Data File : PO050755.D
 Signal(s) : Signal #1: ECD1A.CH Signal #2: ECD2B.CH
 Acq On : 30 Oct 2018 13:30
 Operator : SM/SJ
 Sample : J5707-02
 Misc :
 ALS Vial : 6 Sample Multiplier: 1

Instrument :
 ECD_0
 ClientSampleId :

Integration File signal 1: autoint1.e
 Integration File signal 2: autoint2.e
 Quant Time: Oct 31 00:42:18 2018
 Quant Method : Z:\pestpcbsrv\HPCHEM1\ECD_0\methods\PO102918.M
 Quant Title : GC EXTRACTABLES
 QLast Update : Tue Oct 30 07:48:38 2018
 Response via : Initial Calibration
 Integrator: ChemStation 6890 Scale Mode: Small noise peaks clipped

Volume Inj. : 2 µl
 Signal #1 Phase : ZB-MR1 Signal #2 Phase: ZB-MR2
 Signal #1 Info : 30Mx0.32mmx 0.50µ Signal #2 Info : 30M x 0.32mm x 0.25µm

Compound	RT#1	RT#2	Resp#1	Resp#2	ng/ml	ng/ml

System Monitoring Compounds						
1) SA Tetrachlo...	4.355	3.347	10256500	4513318	20.519	20.765
2) SA Decachlor...	10.014	8.095	5555141	4124137	17.872	16.123
Target Compounds						
20) L4 AR-1242-5	0.000	5.086	0	64614	N.D.	10.029 #
25) L5 AR-1248-5	0.000	5.165	0	20677	N.D.	2.151 #
26) L6 AR-1254-1	0.000	5.086	0	64614	N.D.	3.370 #
28) L6 AR-1254-3	0.000	5.644	0	145046	N.D.	5.125 #
29) L6 AR-1254-4	0.000	5.854	0	10399	N.D.	0.588 #
30) L6 AR-1254-5	0.000	6.265	0	40437	N.D.	1.512 #
31) L7 AR-1260-1	0.000	5.784	0	22172	N.D.	1.072 #
32) L7 AR-1260-2	0.000	5.955	0	5297	N.D.	0.184 #
34) L7 AR-1260-4	0.000	6.620	0	34663	N.D.	1.681 #
36) L8 AR-1262-1	0.000	6.265	0	40437	N.D.	1.437 #

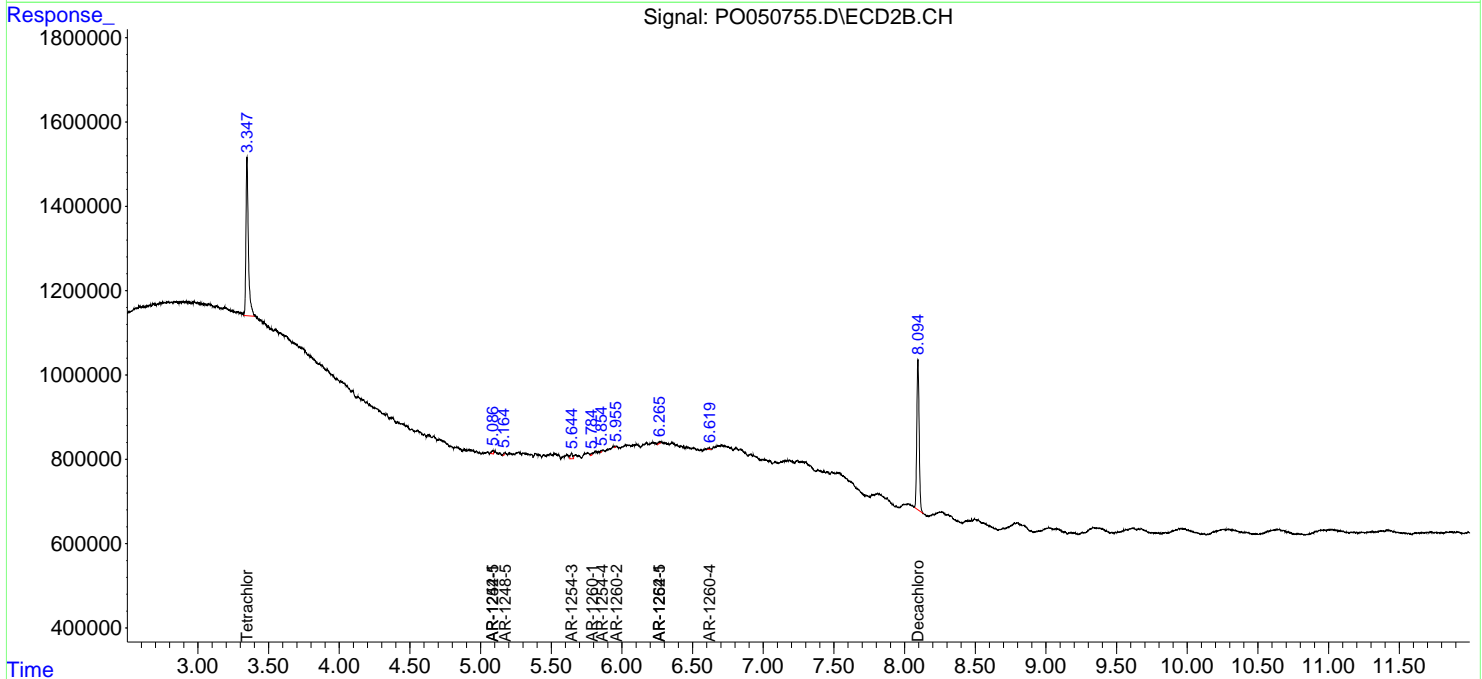
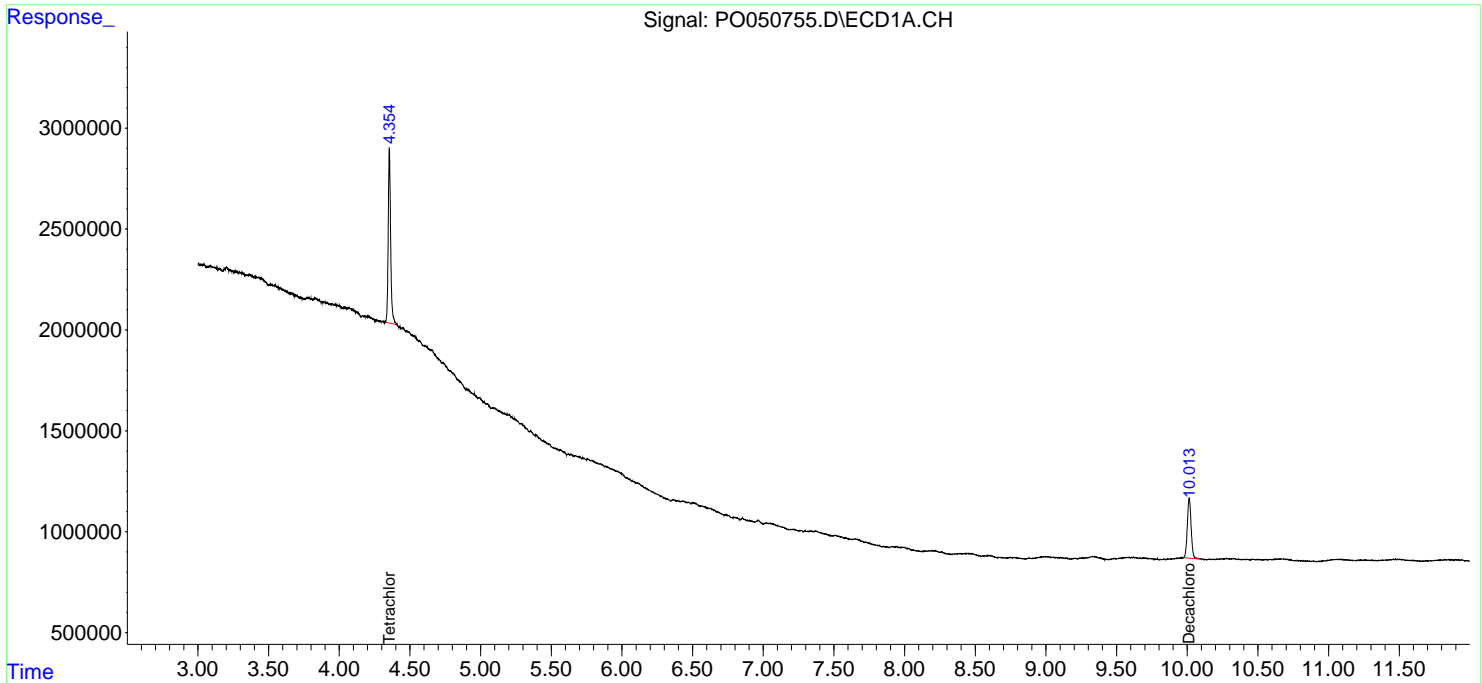
(f)=RT Delta > 1/2 Window (#)=Amounts differ by > 25% (m)=manual int.

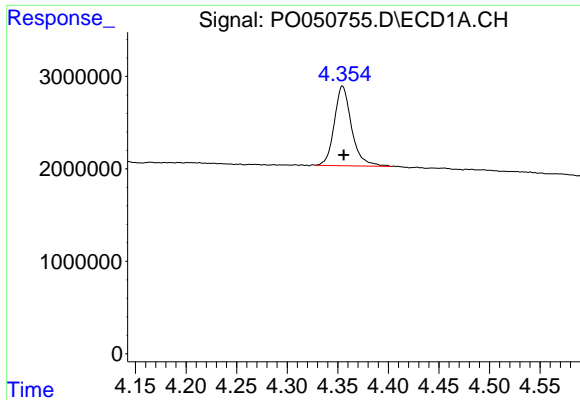
Data Path : Z:\pestpcbsrv\HPCHEM1\ECD_0\Data\PO103018\
 Data File : PO050755.D
 Signal(s) : Signal #1: ECD1A.CH Signal #2: ECD2B.CH
 Acq On : 30 Oct 2018 13:30
 Operator : SM/SJ
 Sample : J5707-02
 Misc :
 ALS Vial : 6 Sample Multiplier: 1

Instrument :
 ECD_O
 ClientSampled :

Integration File signal 1: autoint1.e
 Integration File signal 2: autoint2.e
 Quant Time: Oct 31 00:42:18 2018
 Quant Method : Z:\pestpcbsrv\HPCHEM1\ECD_0\methods\PO102918.M
 Quant Title : GC EXTRACTABLES
 QLast Update : Tue Oct 30 07:48:38 2018
 Response via : Initial Calibration
 Integrator: ChemStation 6890 Scale Mode: Small noise peaks clipped

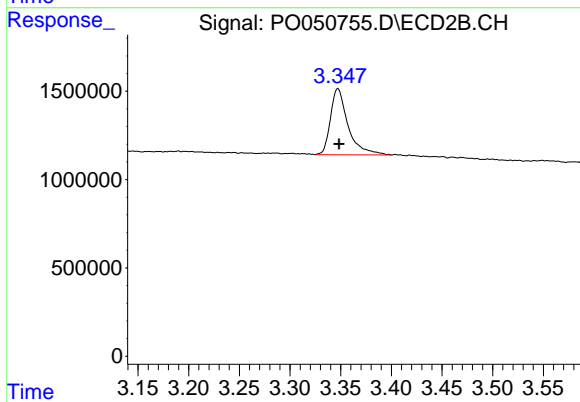
Volume Inj. : 2 µl
 Signal #1 Phase : ZB-MR1 Signal #2 Phase: ZB-MR2
 Signal #1 Info : 30Mx0.32mmx 0.50µ Signal #2 Info : 30M x 0.32mm x 0.25µm



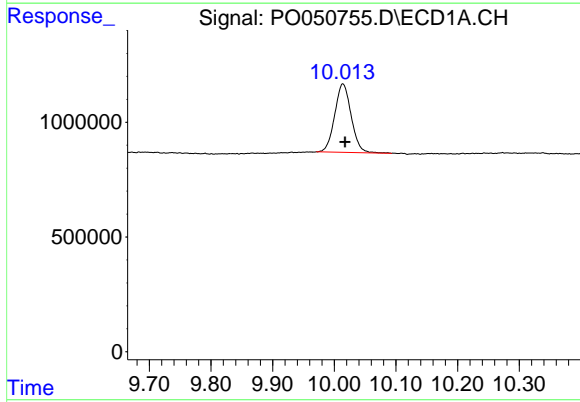


#1 Tetrachloro-m-xylene
 R.T.: 4.355 min
 Delta R.T.: -0.001 min
 Response: 10256500
 Conc: 20.52 ng/ml

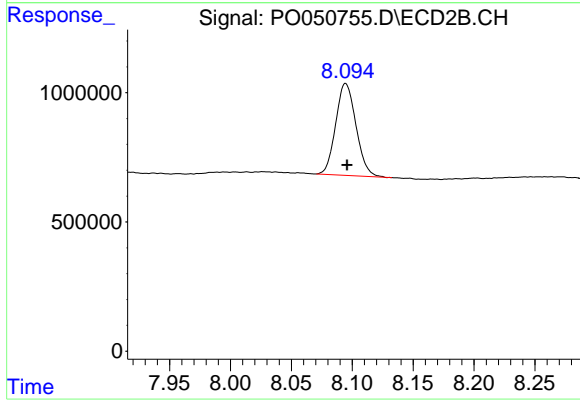
Instrument :
 ECD_O
 ClientSampled :



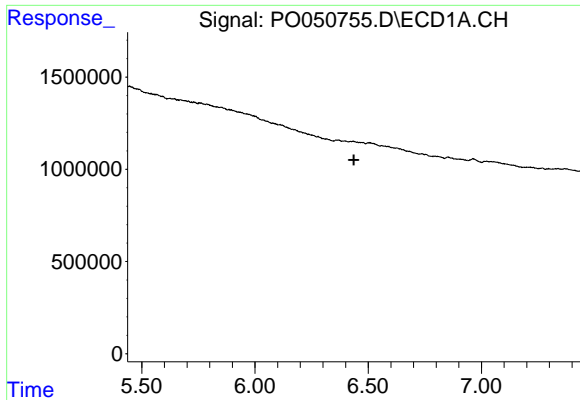
#1 Tetrachloro-m-xylene
 R.T.: 3.347 min
 Delta R.T.: -0.001 min
 Response: 4513318
 Conc: 20.76 ng/ml



#2 Decachlorobiphenyl
 R.T.: 10.014 min
 Delta R.T.: -0.004 min
 Response: 5555141
 Conc: 17.87 ng/ml



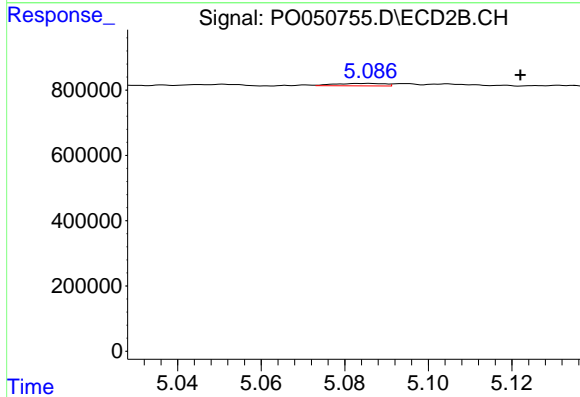
#2 Decachlorobiphenyl
 R.T.: 8.095 min
 Delta R.T.: -0.001 min
 Response: 4124137
 Conc: 16.12 ng/ml



#20 AR-1242-5

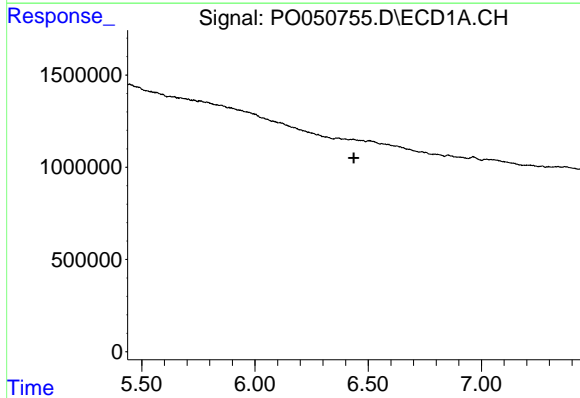
R.T.: 0.000 min
 Exp R.T. : 6.437 min
 Response: 0
 Conc: N.D.

Instrument :
 ECD_O
 ClientSampled :



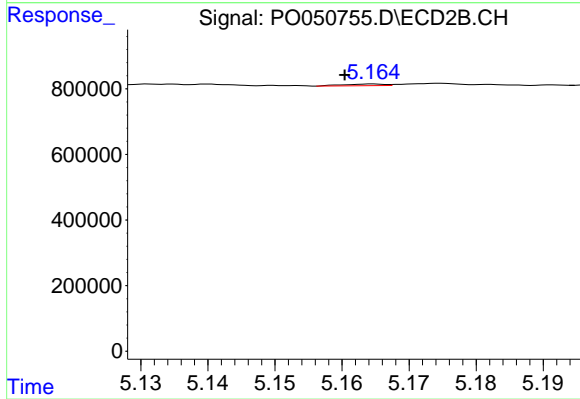
#20 AR-1242-5

R.T.: 5.086 min
 Delta R.T.: -0.036 min
 Response: 64614
 Conc: 10.03 ng/ml



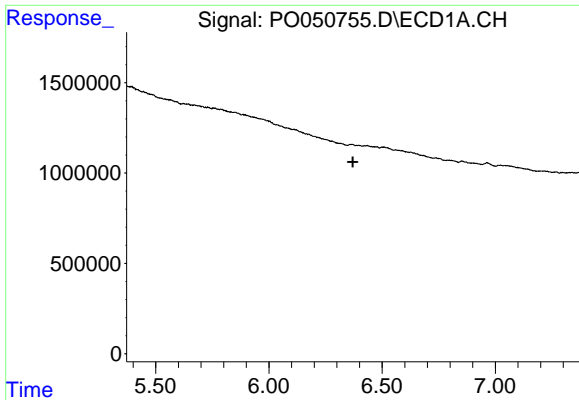
#25 AR-1248-5

R.T.: 0.000 min
 Exp R.T. : 6.436 min
 Response: 0
 Conc: N.D.



#25 AR-1248-5

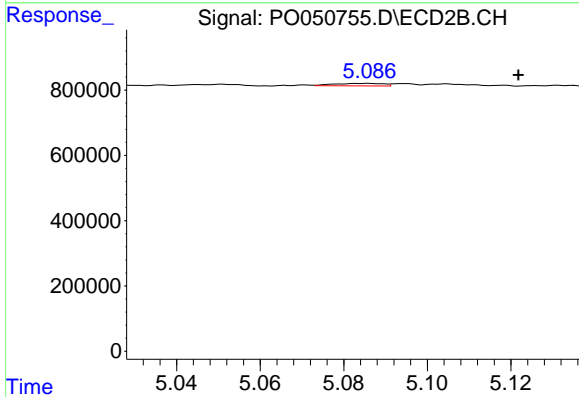
R.T.: 5.165 min
 Delta R.T.: 0.004 min
 Response: 20677
 Conc: 2.15 ng/ml



#26 AR-1254-1

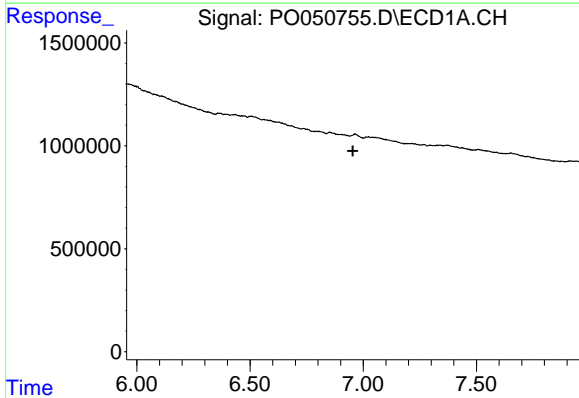
R.T.: 0.000 min
 Exp R.T. : 6.371 min
 Response: 0
 Conc: N.D.

Instrument :
 ECD_O
 ClientSampleId :



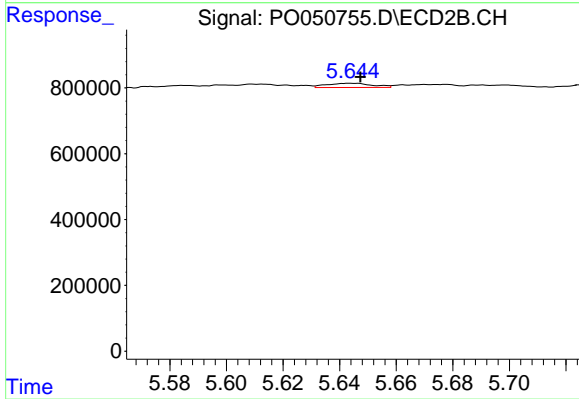
#26 AR-1254-1

R.T.: 5.086 min
 Delta R.T.: -0.036 min
 Response: 64614
 Conc: 3.37 ng/ml



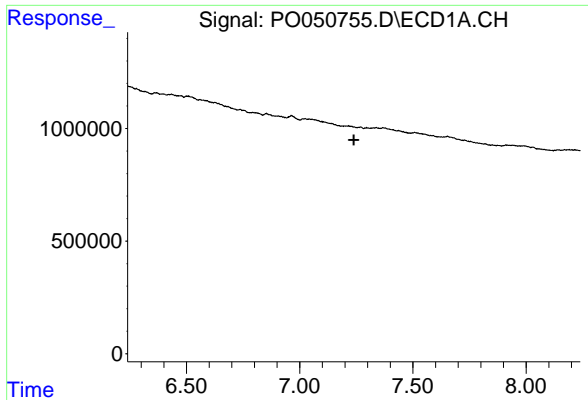
#28 AR-1254-3

R.T.: 0.000 min
 Exp R.T. : 6.955 min
 Response: 0
 Conc: N.D.



#28 AR-1254-3

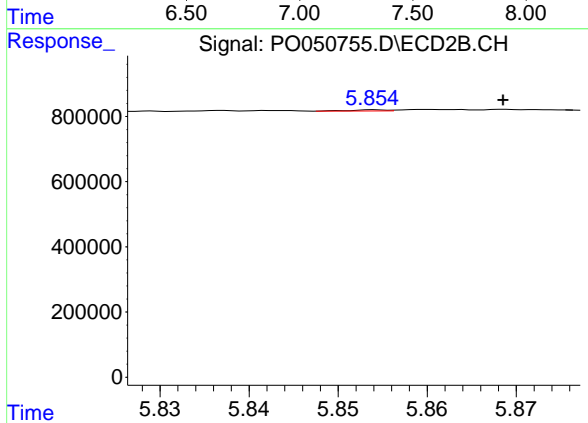
R.T.: 5.644 min
 Delta R.T.: -0.003 min
 Response: 145046
 Conc: 5.12 ng/ml



#29 AR-1254-4

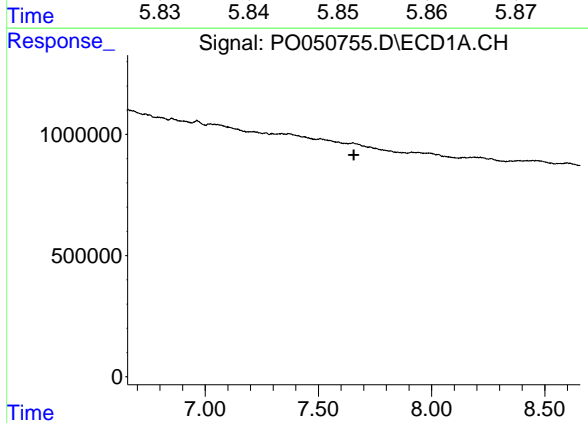
R.T.: 0.000 min
 Exp R.T.: 7.239 min
 Response: 0
 Conc: N.D.

Instrument :
 ECD_O
 ClientSampleId :



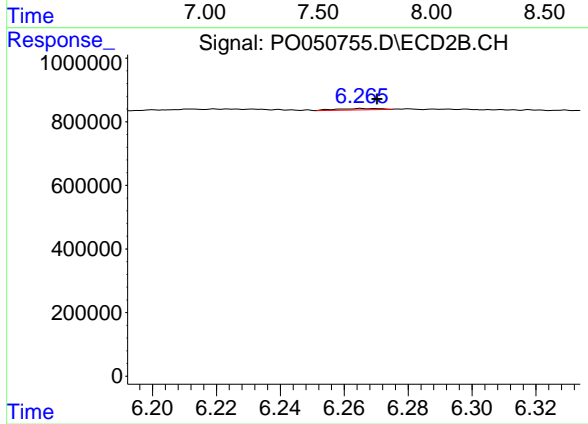
#29 AR-1254-4

R.T.: 5.854 min
 Delta R.T.: -0.014 min
 Response: 10399
 Conc: 0.59 ng/ml



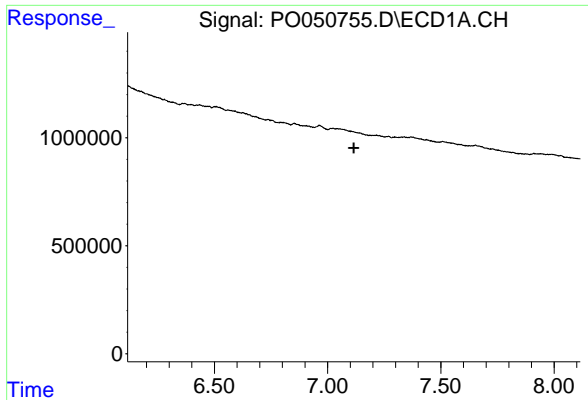
#30 AR-1254-5

R.T.: 0.000 min
 Exp R.T.: 7.657 min
 Response: 0
 Conc: N.D.



#30 AR-1254-5

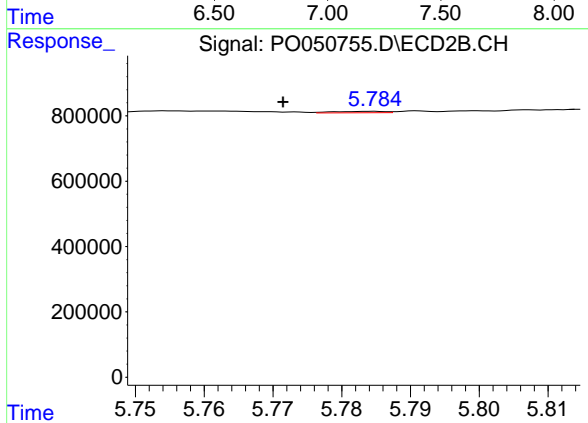
R.T.: 6.265 min
 Delta R.T.: -0.005 min
 Response: 40437
 Conc: 1.51 ng/ml



#31 AR-1260-1

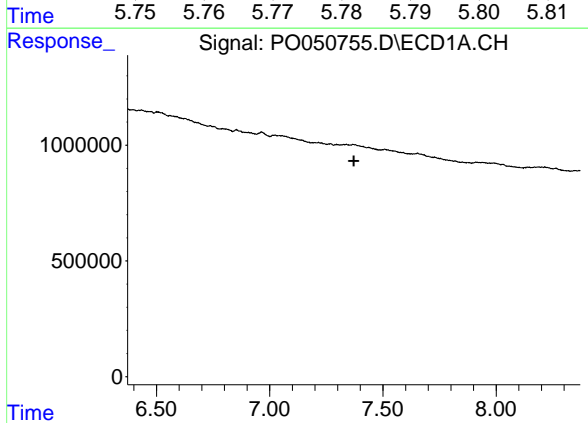
R.T.: 0.000 min
 Exp R.T. : 7.116 min
 Response: 0
 Conc: N.D.

Instrument :
 ECD_O
 ClientSampled :



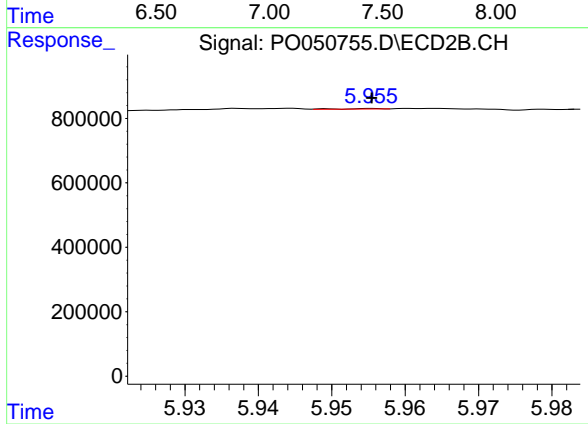
#31 AR-1260-1

R.T.: 5.784 min
 Delta R.T.: 0.013 min
 Response: 22172
 Conc: 1.07 ng/ml



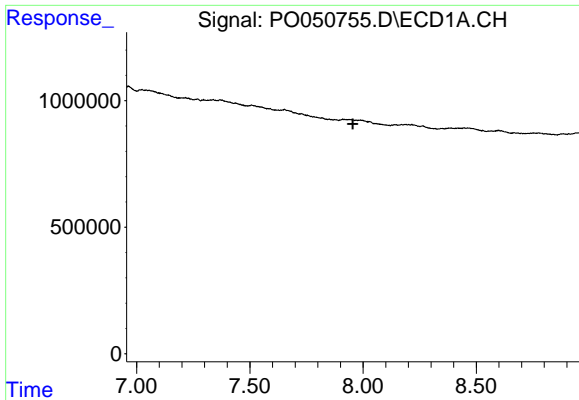
#32 AR-1260-2

R.T.: 0.000 min
 Exp R.T. : 7.372 min
 Response: 0
 Conc: N.D.



#32 AR-1260-2

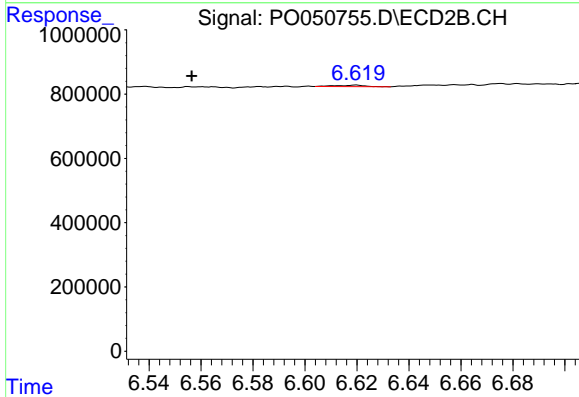
R.T.: 5.955 min
 Delta R.T.: 0.000 min
 Response: 5297
 Conc: 0.18 ng/ml



#34 AR-1260-4

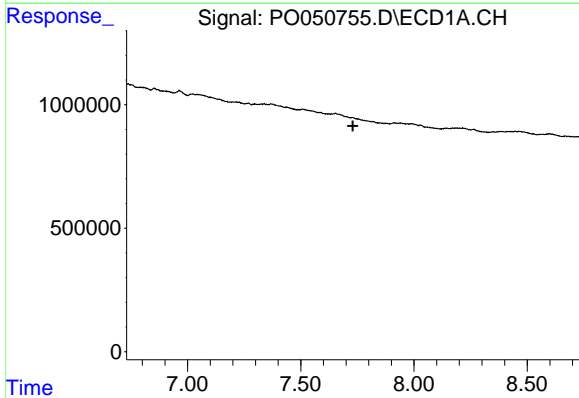
R.T.: 0.000 min
 Exp R.T. : 7.955 min
 Response: 0
 Conc: N.D.

Instrument :
 ECD_O
 ClientSampled :



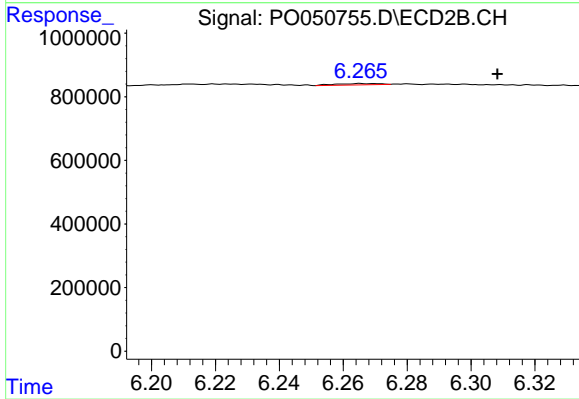
#34 AR-1260-4

R.T.: 6.620 min
 Delta R.T.: 0.063 min
 Response: 34663
 Conc: 1.68 ng/ml



#36 AR-1262-1

R.T.: 0.000 min
 Exp R.T. : 7.730 min
 Response: 0
 Conc: N.D.



#36 AR-1262-1

R.T.: 6.265 min
 Delta R.T.: -0.043 min
 Response: 40437
 Conc: 1.44 ng/ml