

Data Path : Z:\pestpcbsrv\HPCHEM1\ECD_0\Data\PO103018\
 Data File : PO050777.D
 Signal(s) : Signal #1: ECD1A.CH Signal #2: ECD2B.CH
 Acq On : 30 Oct 2018 19:43
 Operator : SM/SJ
 Sample : J5615-02
 Misc :
 ALS Vial : 20 Sample Multiplier: 1

Instrument :
 ECD_0
 ClientSampled :

Integration File signal 1: autoint1.e
 Integration File signal 2: autoint2.e
 Quant Time: Oct 31 01:02:35 2018
 Quant Method : Z:\pestpcbsrv\HPCHEM1\ECD_0\methods\PO102918.M
 Quant Title : GC EXTRACTABLES
 QLast Update : Tue Oct 30 07:48:38 2018
 Response via : Initial Calibration
 Integrator: ChemStation 6890 Scale Mode: Small noise peaks clipped

Volume Inj. : 2 µl
 Signal #1 Phase : ZB-MR1 Signal #2 Phase: ZB-MR2
 Signal #1 Info : 30Mx0.32mmx 0.50µ Signal #2 Info : 30M x 0.32mm x 0.25µm

Compound	RT#1	RT#2	Resp#1	Resp#2	ng/ml	ng/ml
System Monitoring Compounds						
1) SA Tetrachlo...	4.356	3.349	12001338	5032558	24.010	23.154
2) SA Decachlor...	10.013	8.093	4043800	2940123	13.010	11.494
Target Compounds						
3) L1 AR-1016-1	0.000	4.368	0	274114	N.D.	29.828 #
4) L1 AR-1016-2	0.000	4.382	0	300162	N.D.	19.370 #
5) L1 AR-1016-3	0.000	4.548	0	150622	N.D.	18.805 #
6) L1 AR-1016-4	0.000	4.589	0	253181	N.D.	41.609 #
7) L1 AR-1016-5	0.000	4.803	0	148391	N.D.	17.196 #
8) L2 AR-1221-1	0.000	3.539	0	21502	N.D.	12.721 #
9) L2 AR-1221-2	0.000	3.628	0	94921	N.D.	74.585 #
10) L2 AR-1221-3	0.000	3.699	0	222077	N.D.	51.928 #
11) L3 AR-1232-1	0.000	3.699	0	222077	N.D.	55.553 #
12) L3 AR-1232-2	5.321	4.382	433659	300162	93.063	62.747 #
13) L3 AR-1232-3	0.000	4.548	0	150622	N.D.	57.762 #
14) L3 AR-1232-4	0.000	4.630	0	153733	N.D.	68.961 #
15) L3 AR-1232-5	0.000	4.771	0	171221	N.D.	64.376 #
16) L4 AR-1242-1	0.000	4.368	0	274114	N.D.	46.707 #
17) L4 AR-1242-2	0.000	4.382	0	300162	N.D.	30.045 #
18) L4 AR-1242-3	0.000	4.548	0	150622	N.D.	29.828 #
19) L4 AR-1242-4	0.000	4.630	0	153733	N.D.	32.182 #
20) L4 AR-1242-5	0.000	5.121	0	557832	N.D.	86.586 #
21) L5 AR-1248-1	0.000	4.368	0	274114	N.D.	59.416 #
22) L5 AR-1248-2	0.000	4.589	0	253181	N.D.	36.352 #
23) L5 AR-1248-3	0.000	4.630	0	153733	N.D.	21.993 #
24) L5 AR-1248-4	0.000	4.803	0	148391	N.D.	15.903 #
25) L5 AR-1248-5	0.000	5.159	0	62102	N.D.	6.459 #
26) L6 AR-1254-1	0.000	5.121	0	557832	N.D.	29.093 #
27) L6 AR-1254-2	6.586	5.263	1894055	1358109	56.020	78.235 #
28) L6 AR-1254-3	6.955	5.645	3247564	3512397	93.259	124.095 #
29) L6 AR-1254-4	7.236	5.867	1837781	1936626	79.455	109.568 #
30) L6 AR-1254-5	7.675	6.269	28802270	19681875	1173.103	736.149 #
31) L7 AR-1260-1	7.115	5.770	1424815	3569466	55.385	172.640 #
32) L7 AR-1260-2	7.366	5.954	9713425	3024067	328.351	105.311 #
33) L7 AR-1260-3	7.675	6.097	28802270	1327390	1359.021	53.826 #
34) L7 AR-1260-4	7.943	6.550	2187777	666808	95.608	32.329 #
35) L7 AR-1260-5	8.265	6.794	927947	969030	21.068	18.649
36) L8 AR-1262-1	7.675	6.312	28802270	3516546	1167.480	124.967 #
37) L8 AR-1262-2	8.265	6.794	927947	969030	23.710	21.571
38) L8 AR-1262-3	8.586	7.045	642719	2076653	25.440	115.664 #
39) L8 AR-1262-4	0.000	7.127	0	1276092	N.D.	43.376 #
40) L8 AR-1262-5	0.000	7.608	0	275711	N.D.	23.757 #
41) L9 AR-1268-1	8.586	7.045	642719	2076653	12.739	37.705 #

Data Path : Z:\pestpcbsrv\HPCHEM1\ECD_0\Data\PO103018\
 Data File : PO050777.D
 Signal(s) : Signal #1: ECD1A.CH Signal #2: ECD2B.CH
 Acq On : 30 Oct 2018 19:43
 Operator : SM/SJ
 Sample : J5615-02
 Misc :
 ALS Vial : 20 Sample Multiplier: 1

Instrument :
 ECD_0
 ClientSampleId :

Integration File signal 1: autoint1.e
 Integration File signal 2: autoint2.e
 Quant Time: Oct 31 01:02:35 2018
 Quant Method : Z:\pestpcbsrv\HPCHEM1\ECD_0\methods\PO102918.M
 Quant Title : GC EXTRACTABLES
 QLast Update : Tue Oct 30 07:48:38 2018
 Response via : Initial Calibration
 Integrator: ChemStation 6890 Scale Mode: Small noise peaks clipped

Volume Inj. : 2 µl
 Signal #1 Phase : ZB-MR1 Signal #2 Phase: ZB-MR2
 Signal #1 Info : 30Mx0.32mmx 0.50µ Signal #2 Info : 30M x 0.32mm x 0.25µm

	Compound	RT#1	RT#2	Resp#1	Resp#2	ng/ml	ng/ml
42)	L9 AR-1268-2	0.000	7.127	0	1276092	N.D.	26.771 #
43)	L9 AR-1268-3	0.000	7.333	0	154655	N.D.	3.590 #
44)	L9 AR-1268-4	0.000	7.608	0	275711	N.D.	19.735 #

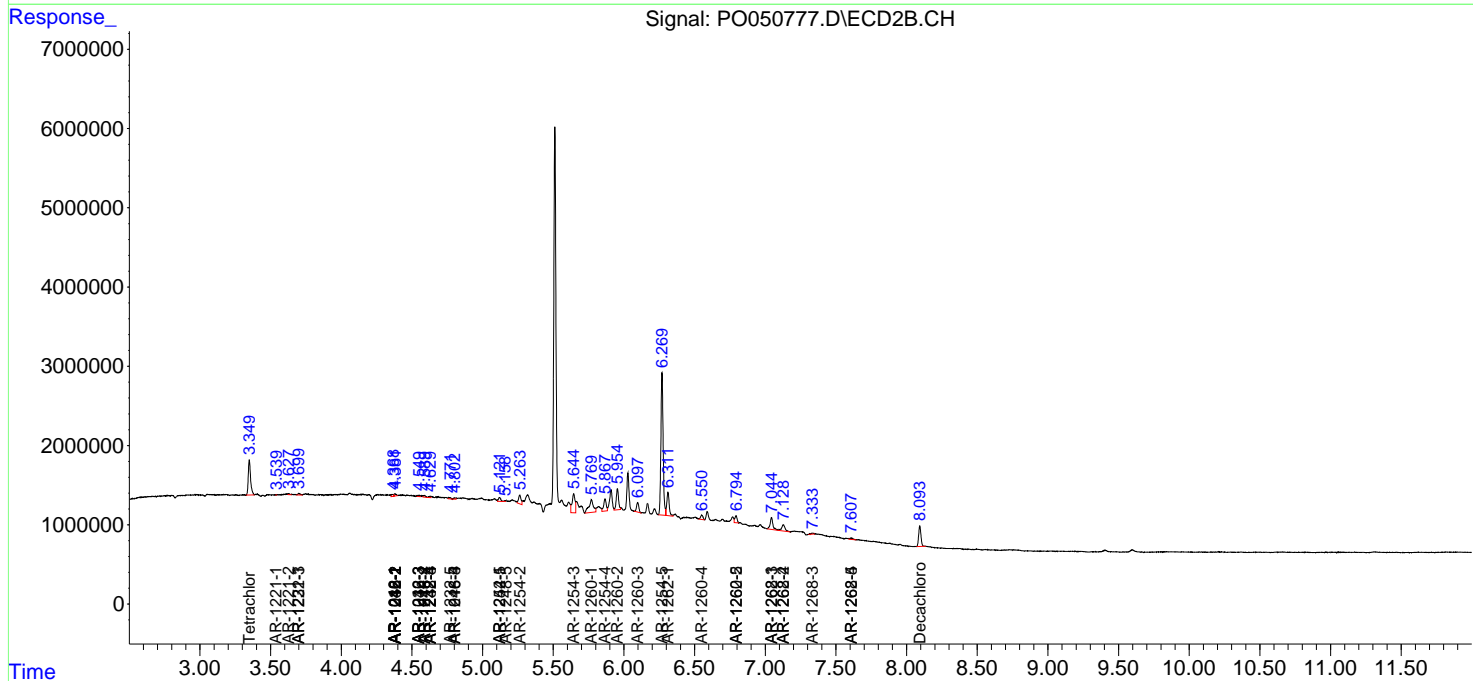
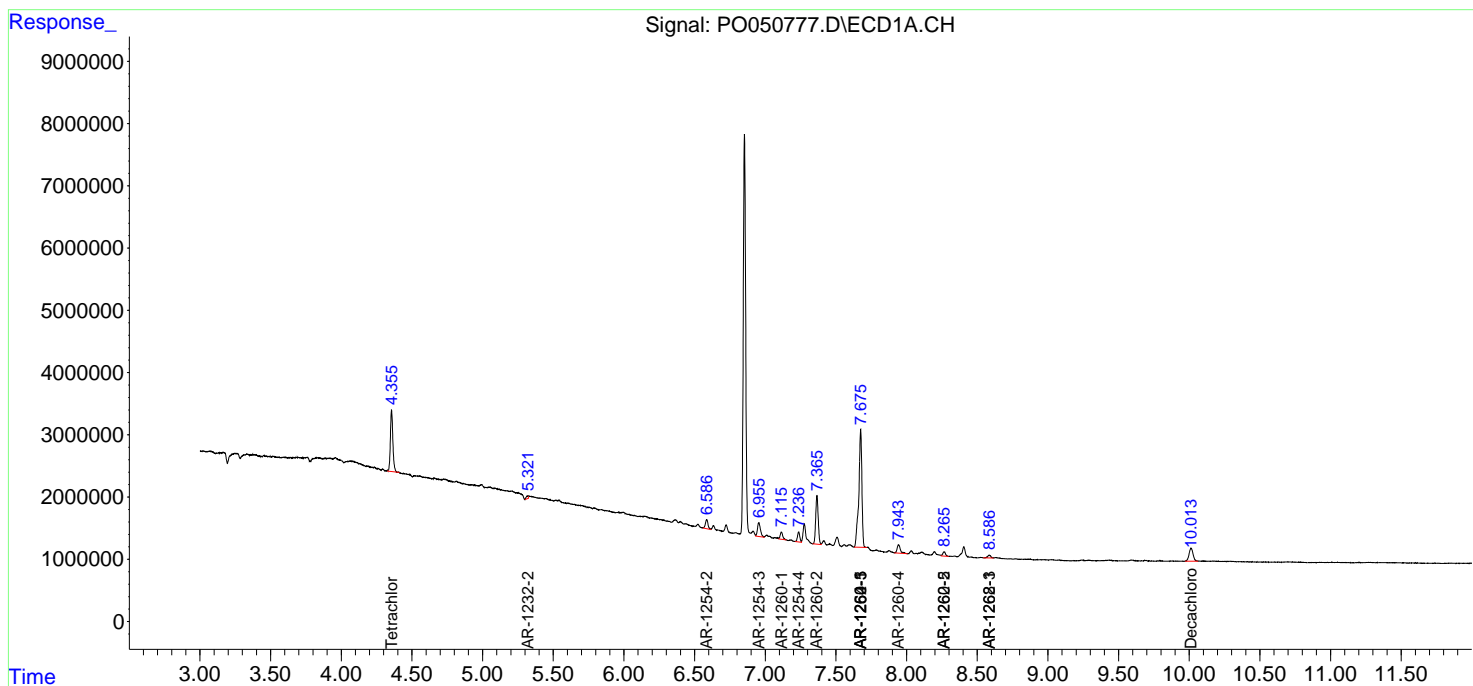
(f)=RT Delta > 1/2 Window (#)=Amounts differ by > 25% (m)=manual int.

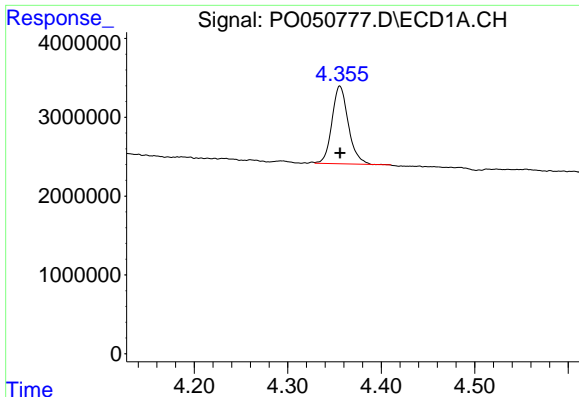
Data Path : Z:\pestpcbsrv\HPCHEM1\ECD_0\Data\PO103018\
 Data File : PO050777.D
 Signal(s) : Signal #1: ECD1A.CH Signal #2: ECD2B.CH
 Acq On : 30 Oct 2018 19:43
 Operator : SM/SJ
 Sample : J5615-02
 Misc :
 ALS Vial : 20 Sample Multiplier: 1

Instrument :
 ECD_O
 ClientSampled :

Integration File signal 1: autoint1.e
 Integration File signal 2: autoint2.e
 Quant Time: Oct 31 01:02:35 2018
 Quant Method : Z:\pestpcbsrv\HPCHEM1\ECD_0\methods\PO102918.M
 Quant Title : GC EXTRACTABLES
 QLast Update : Tue Oct 30 07:48:38 2018
 Response via : Initial Calibration
 Integrator: ChemStation 6890 Scale Mode: Small noise peaks clipped

Volume Inj. : 2 µl
 Signal #1 Phase : ZB-MR1 Signal #2 Phase: ZB-MR2
 Signal #1 Info : 30Mx0.32mmx 0.50µ Signal #2 Info : 30M x 0.32mm x 0.25µm

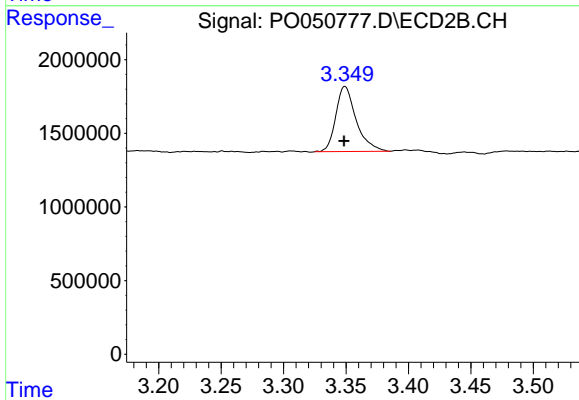




#1 Tetrachloro-m-xylene

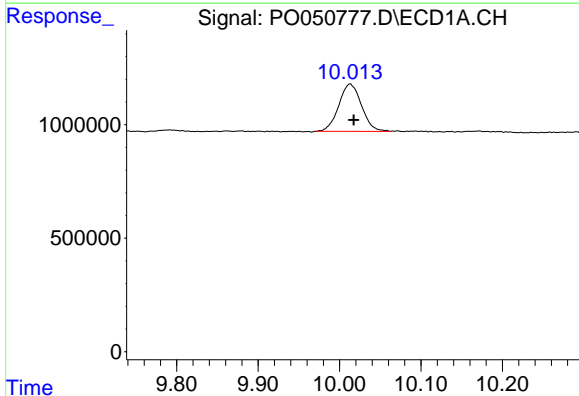
R.T.: 4.356 min
 Delta R.T.: 0.000 min
 Response: 12001338
 Conc: 24.01 ng/ml

Instrument :
 ECD_O
 ClientSampleId :



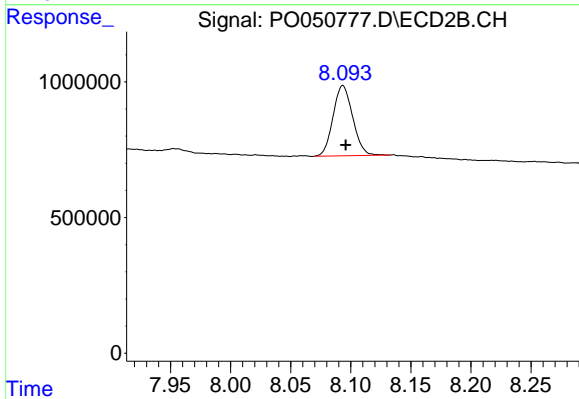
#1 Tetrachloro-m-xylene

R.T.: 3.349 min
 Delta R.T.: 0.000 min
 Response: 5032558
 Conc: 23.15 ng/ml



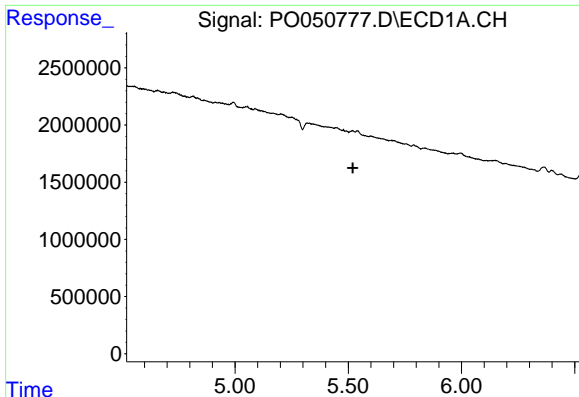
#2 Decachlorobiphenyl

R.T.: 10.013 min
 Delta R.T.: -0.004 min
 Response: 4043800
 Conc: 13.01 ng/ml



#2 Decachlorobiphenyl

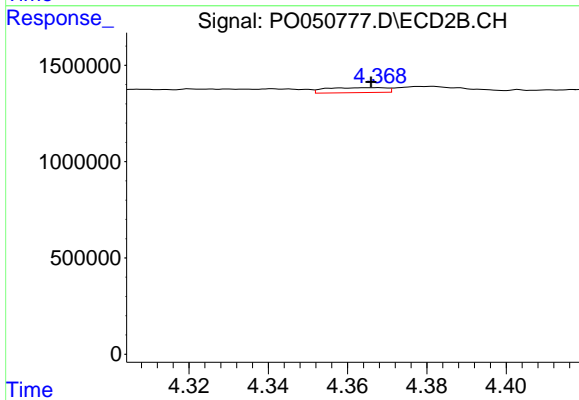
R.T.: 8.093 min
 Delta R.T.: -0.002 min
 Response: 2940123
 Conc: 11.49 ng/ml



#3 AR-1016-1

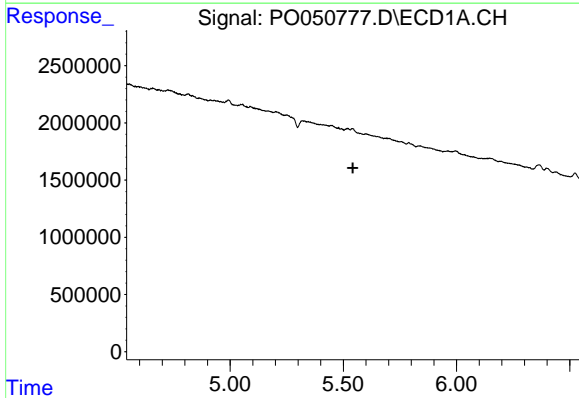
R.T.: 0.000 min
 Exp R.T. : 5.521 min
 Response: 0
 Conc: N.D.

Instrument :
 ECD_O
 ClientSampled :



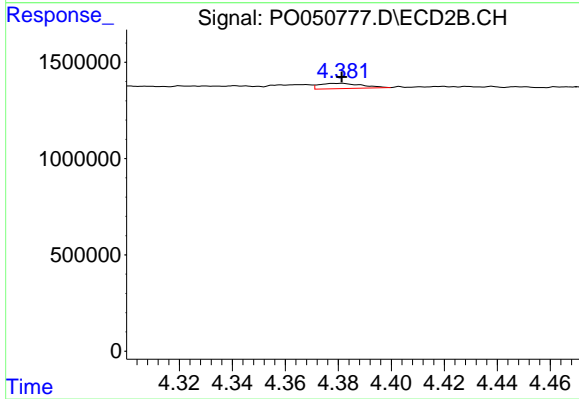
#3 AR-1016-1

R.T.: 4.368 min
 Delta R.T.: 0.002 min
 Response: 274114
 Conc: 29.83 ng/ml



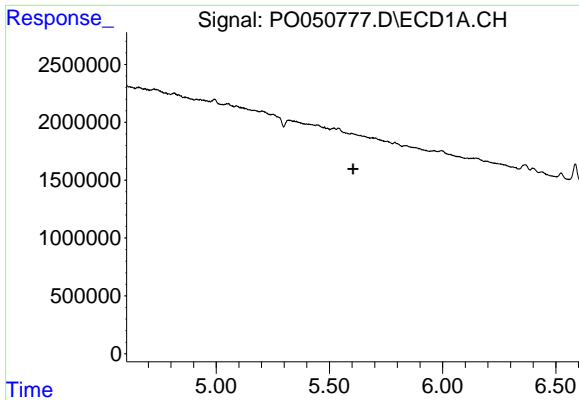
#4 AR-1016-2

R.T.: 0.000 min
 Exp R.T. : 5.542 min
 Response: 0
 Conc: N.D.



#4 AR-1016-2

R.T.: 4.382 min
 Delta R.T.: 0.000 min
 Response: 300162
 Conc: 19.37 ng/ml

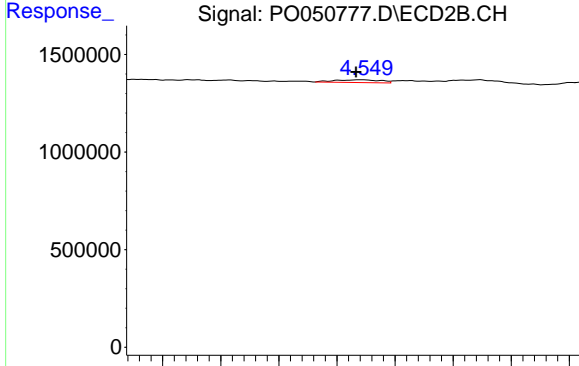


#5 AR-1016-3

R.T.: 0.000 min
 Exp R.T. : 5.604 min
 Response: 0
 Conc: N.D.

Instrument :
 ECD_O
 ClientSampleId :

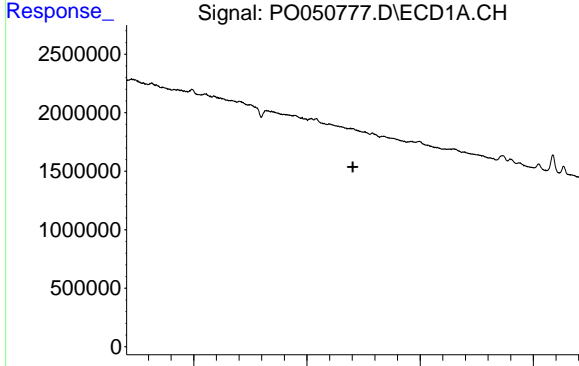
Time



#5 AR-1016-3

R.T.: 4.548 min
 Delta R.T.: 0.001 min
 Response: 150622
 Conc: 18.81 ng/ml

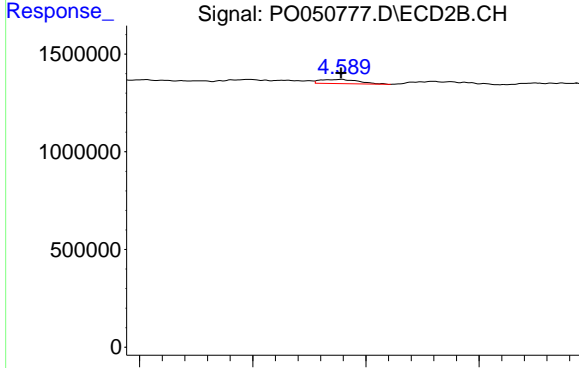
Time



#6 AR-1016-4

R.T.: 0.000 min
 Exp R.T. : 5.703 min
 Response: 0
 Conc: N.D.

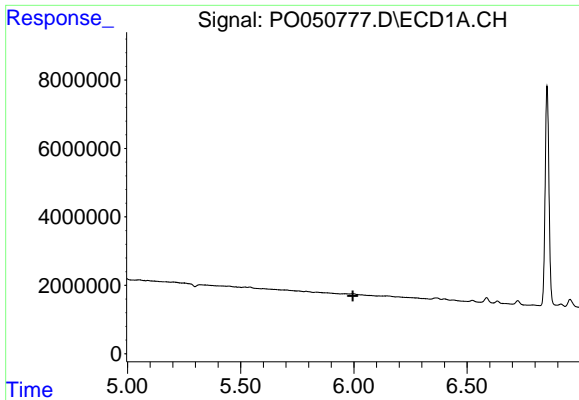
Time



#6 AR-1016-4

R.T.: 4.589 min
 Delta R.T.: 0.000 min
 Response: 253181
 Conc: 41.61 ng/ml

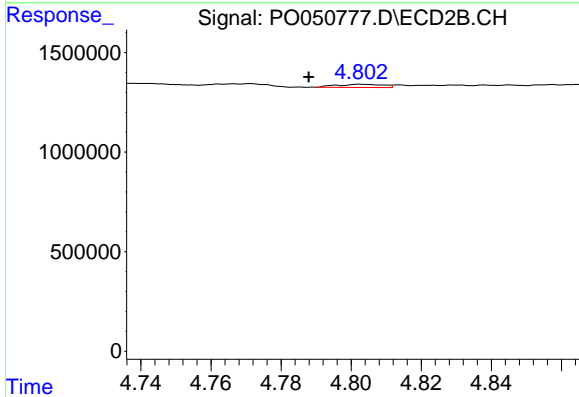
Time



#7 AR-1016-5

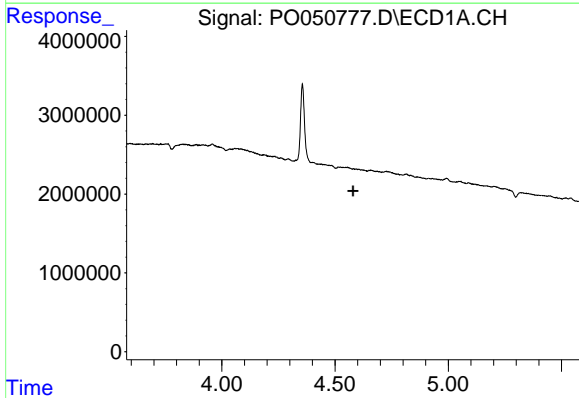
R.T.: 0.000 min
 Exp R.T. : 5.995 min
 Response: 0
 Conc: N.D.

Instrument :
 ECD_O
 ClientSampleId :



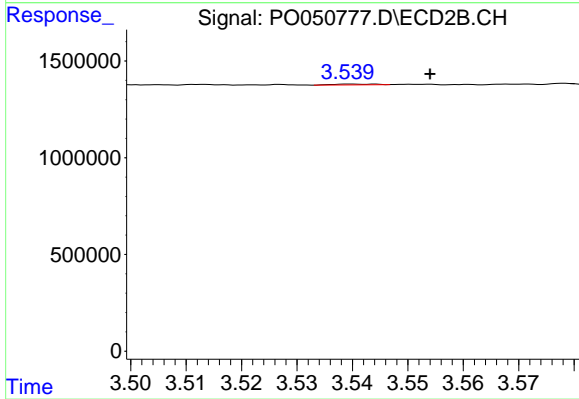
#7 AR-1016-5

R.T.: 4.803 min
 Delta R.T.: 0.015 min
 Response: 148391
 Conc: 17.20 ng/ml



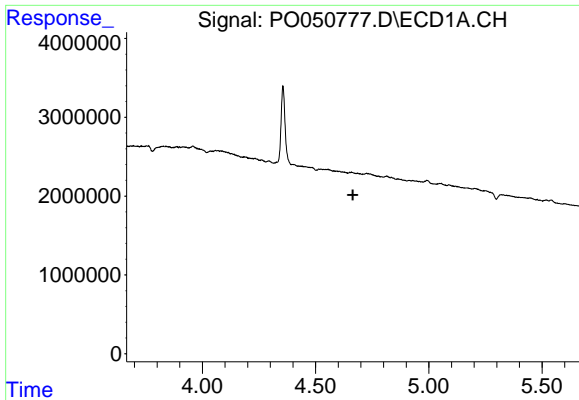
#8 AR-1221-1

R.T.: 0.000 min
 Exp R.T. : 4.579 min
 Response: 0
 Conc: N.D.



#8 AR-1221-1

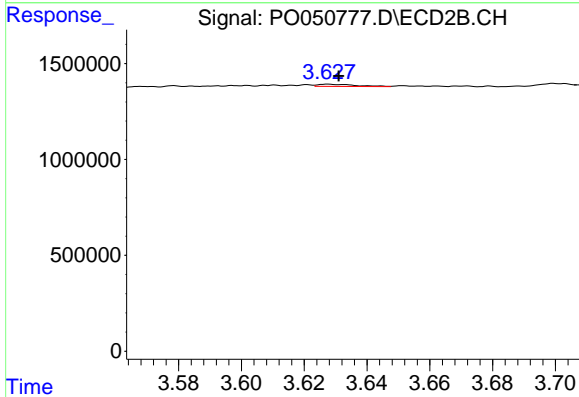
R.T.: 3.539 min
 Delta R.T.: -0.015 min
 Response: 21502
 Conc: 12.72 ng/ml



#9 AR-1221-2

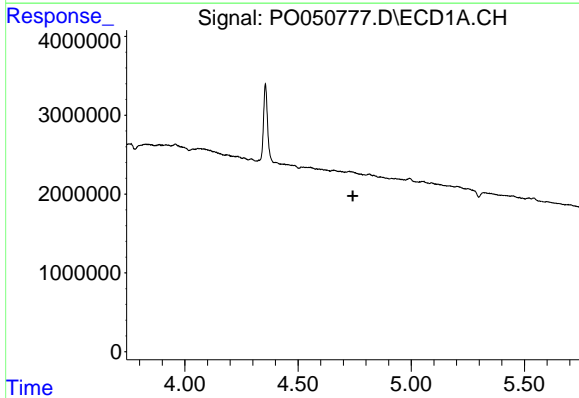
R.T.: 0.000 min
 Exp R.T. : 4.664 min
 Response: 0
 Conc: N.D.

Instrument :
 ECD_O
 ClientSampleId :



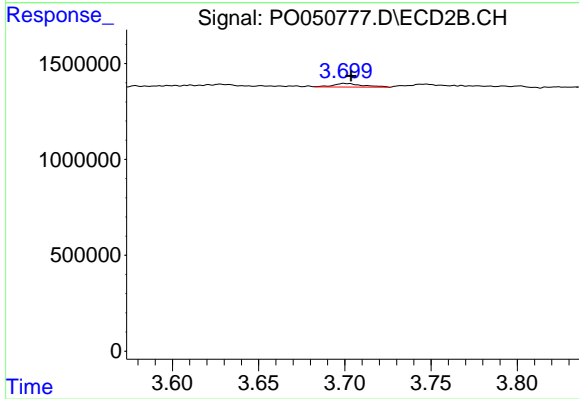
#9 AR-1221-2

R.T.: 3.628 min
 Delta R.T.: -0.003 min
 Response: 94921
 Conc: 74.59 ng/ml



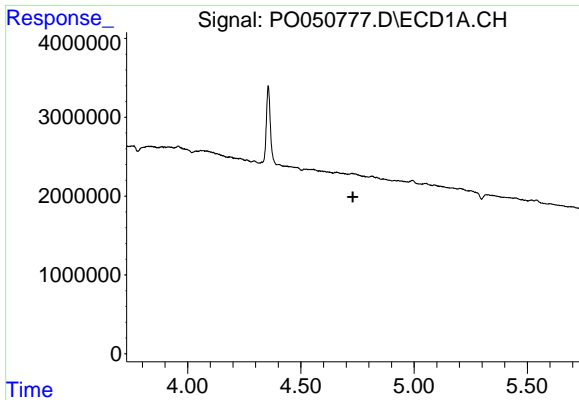
#10 AR-1221-3

R.T.: 0.000 min
 Exp R.T. : 4.742 min
 Response: 0
 Conc: N.D.



#10 AR-1221-3

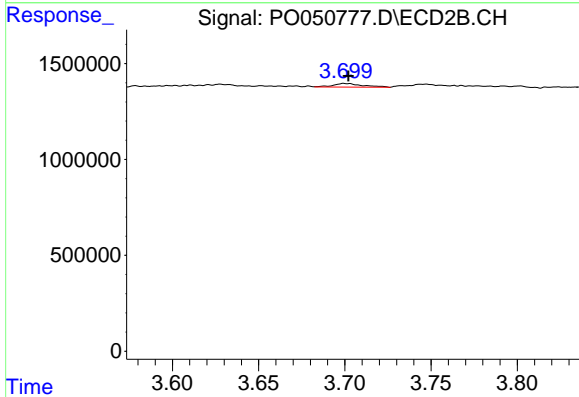
R.T.: 3.699 min
 Delta R.T.: -0.004 min
 Response: 222077
 Conc: 51.93 ng/ml



#11 AR-1232-1

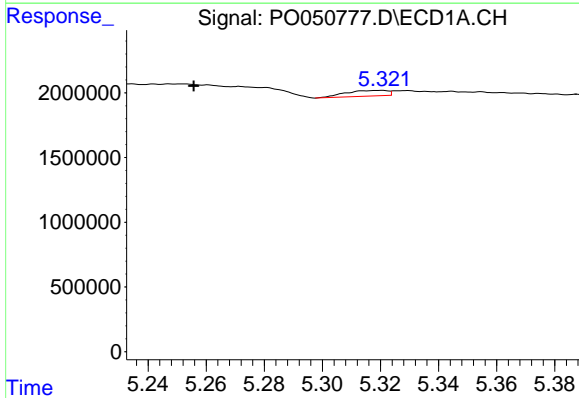
R.T.: 0.000 min
 Exp R.T.: 4.729 min
 Response: 0
 Conc: N.D.

Instrument :
 ECD_O
 ClientSampleId :



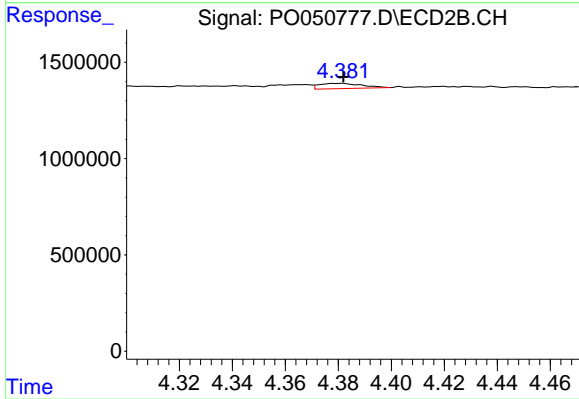
#11 AR-1232-1

R.T.: 3.699 min
 Delta R.T.: -0.003 min
 Response: 222077
 Conc: 55.55 ng/ml



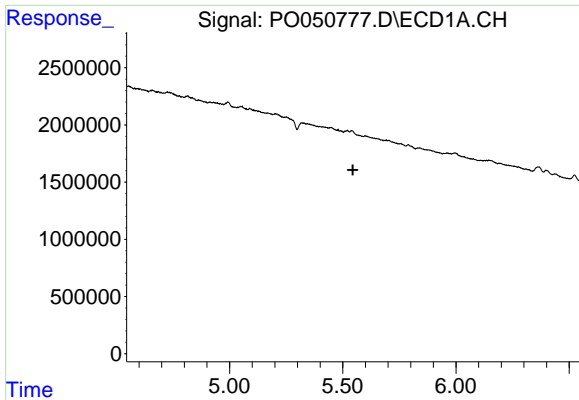
#12 AR-1232-2

R.T.: 5.321 min
 Delta R.T.: 0.065 min
 Response: 433659
 Conc: 93.06 ng/ml



#12 AR-1232-2

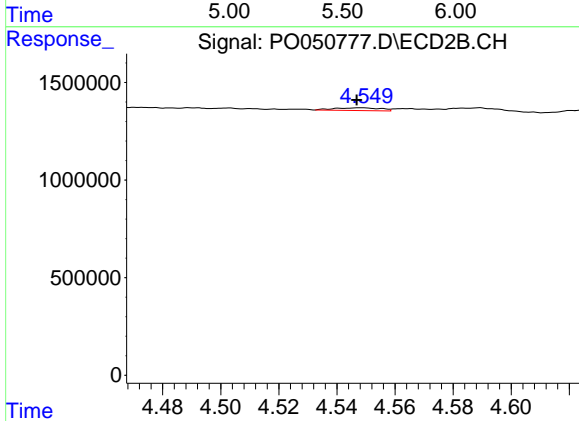
R.T.: 4.382 min
 Delta R.T.: 0.000 min
 Response: 300162
 Conc: 62.75 ng/ml



#13 AR-1232-3

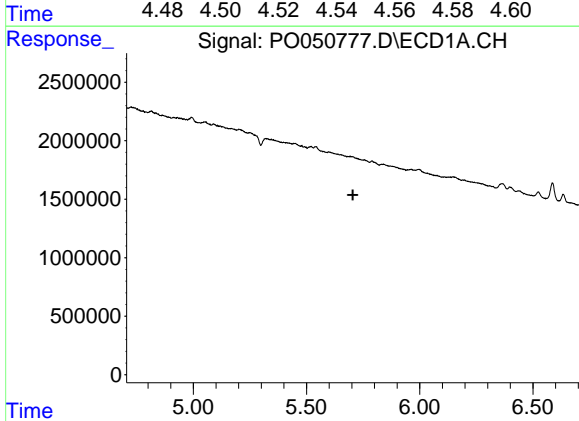
R.T.: 0.000 min
 Exp R.T. : 5.545 min
 Response: 0
 Conc: N.D.

Instrument :
 ECD_O
 ClientSampled :



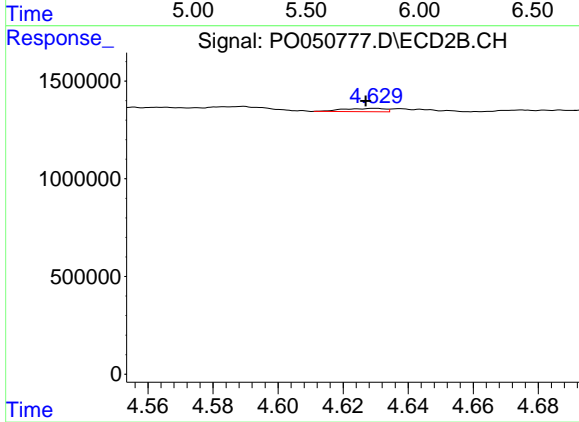
#13 AR-1232-3

R.T.: 4.548 min
 Delta R.T.: 0.001 min
 Response: 150622
 Conc: 57.76 ng/ml



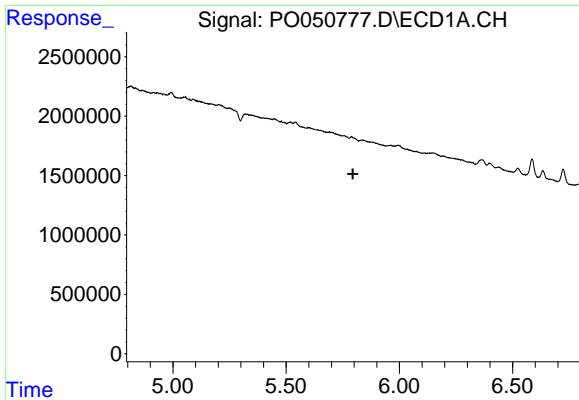
#14 AR-1232-4

R.T.: 0.000 min
 Exp R.T. : 5.705 min
 Response: 0
 Conc: N.D.



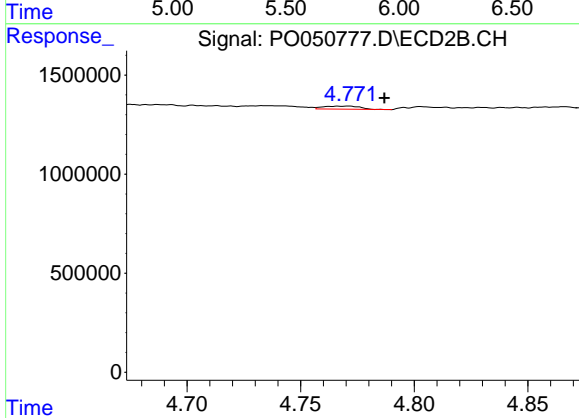
#14 AR-1232-4

R.T.: 4.630 min
 Delta R.T.: 0.003 min
 Response: 153733
 Conc: 68.96 ng/ml

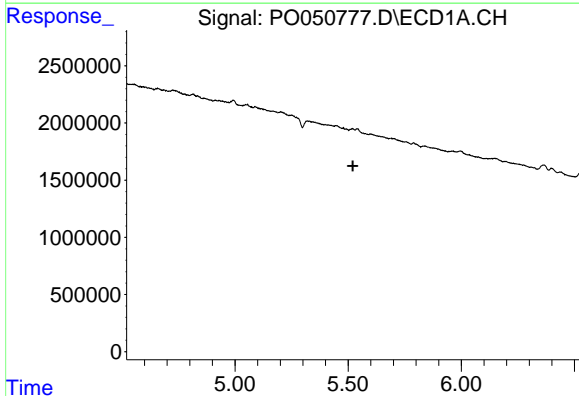


#15 AR-1232-5
 R.T.: 0.000 min
 Exp R.T. : 5.794 min
 Response: 0
 Conc: N.D.

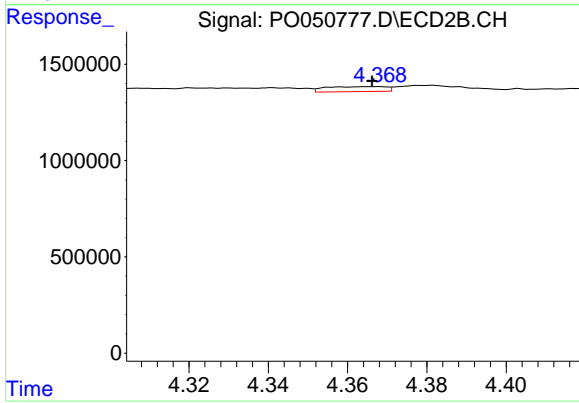
Instrument :
 ECD_O
 ClientSampled :



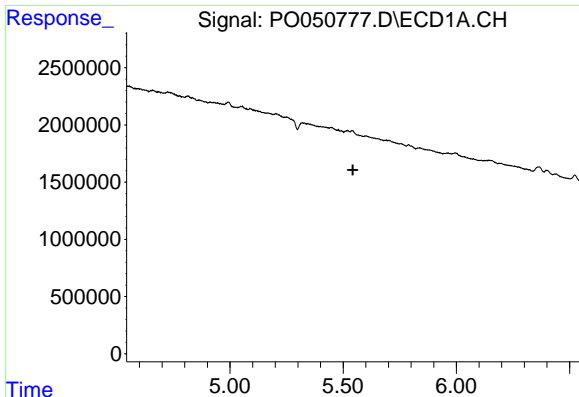
#15 AR-1232-5
 R.T.: 4.771 min
 Delta R.T.: -0.016 min
 Response: 171221
 Conc: 64.38 ng/ml



#16 AR-1242-1
 R.T.: 0.000 min
 Exp R.T. : 5.521 min
 Response: 0
 Conc: N.D.



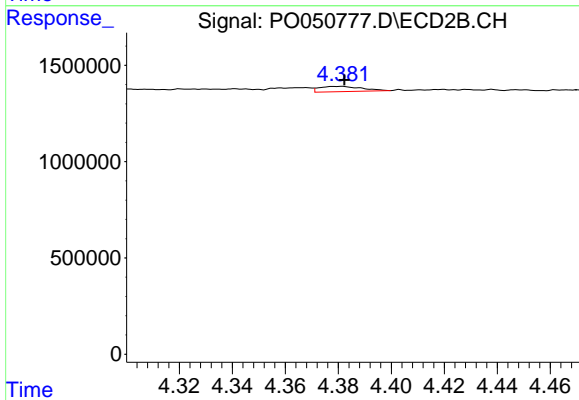
#16 AR-1242-1
 R.T.: 4.368 min
 Delta R.T.: 0.002 min
 Response: 274114
 Conc: 46.71 ng/ml



#17 AR-1242-2

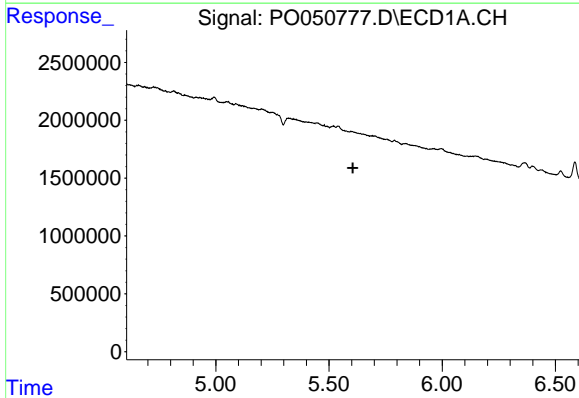
R.T.: 0.000 min
 Exp R.T. : 5.543 min
 Response: 0
 Conc: N.D.

Instrument :
 ECD_O
 ClientSampled :



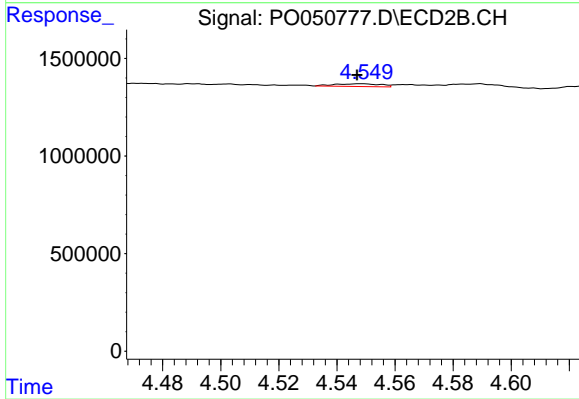
#17 AR-1242-2

R.T.: 4.382 min
 Delta R.T.: 0.000 min
 Response: 300162
 Conc: 30.05 ng/ml



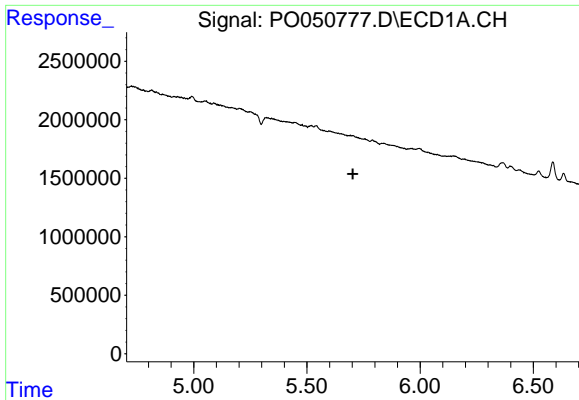
#18 AR-1242-3

R.T.: 0.000 min
 Exp R.T. : 5.605 min
 Response: 0
 Conc: N.D.



#18 AR-1242-3

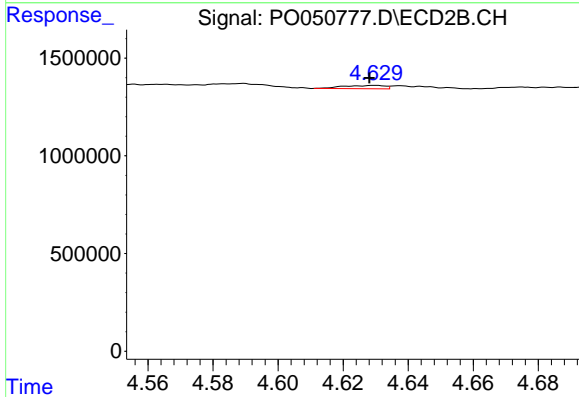
R.T.: 4.548 min
 Delta R.T.: 0.001 min
 Response: 150622
 Conc: 29.83 ng/ml



#19 AR-1242-4

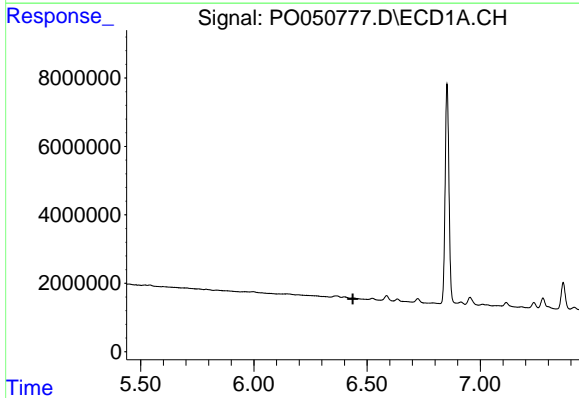
R.T.: 0.000 min
 Exp R.T. : 5.703 min
 Response: 0
 Conc: N.D.

Instrument :
 ECD_O
 ClientSampled :



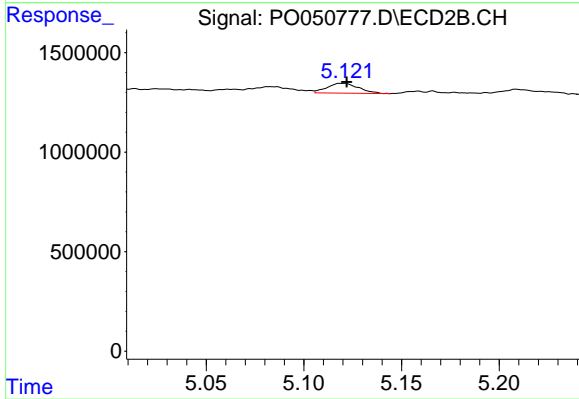
#19 AR-1242-4

R.T.: 4.630 min
 Delta R.T.: 0.002 min
 Response: 153733
 Conc: 32.18 ng/ml



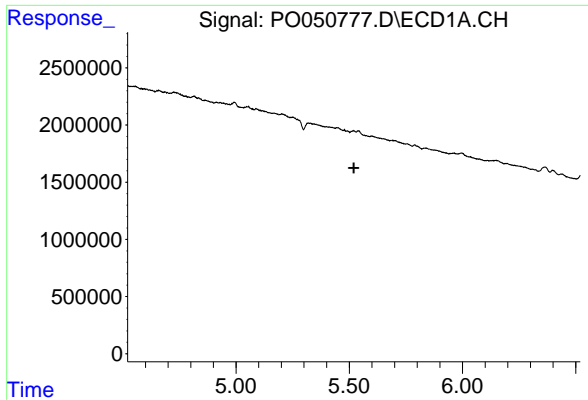
#20 AR-1242-5

R.T.: 0.000 min
 Exp R.T. : 6.437 min
 Response: 0
 Conc: N.D.



#20 AR-1242-5

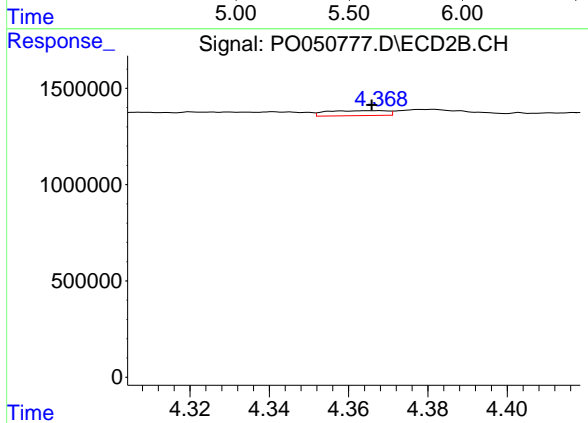
R.T.: 5.121 min
 Delta R.T.: -0.001 min
 Response: 557832
 Conc: 86.59 ng/ml



#21 AR-1248-1

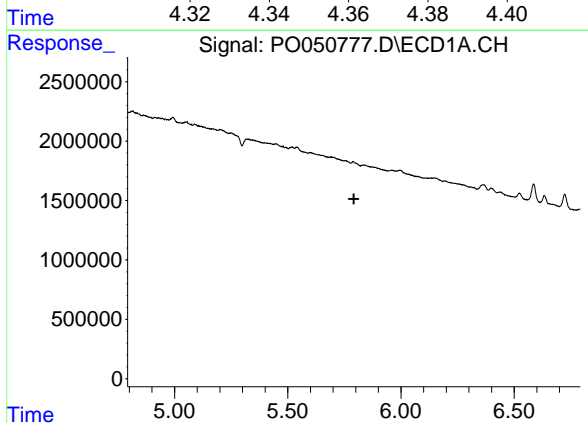
R.T.: 0.000 min
 Exp R.T. : 5.521 min
 Response: 0
 Conc: N.D.

Instrument :
 ECD_O
 ClientSampled :



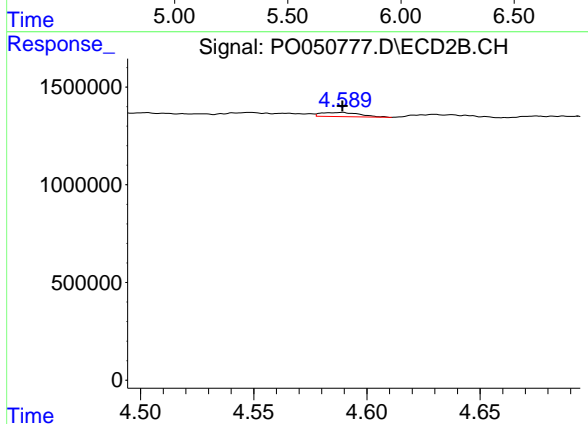
#21 AR-1248-1

R.T.: 4.368 min
 Delta R.T.: 0.002 min
 Response: 274114
 Conc: 59.42 ng/ml



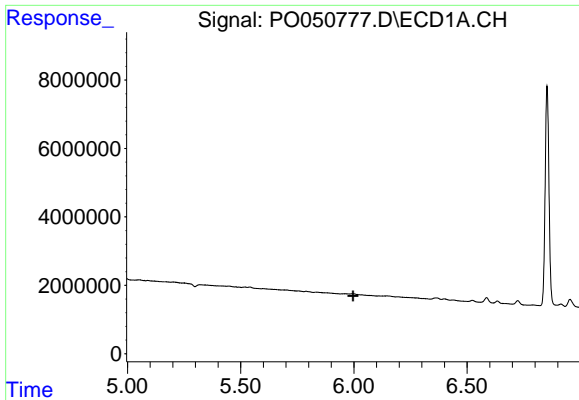
#22 AR-1248-2

R.T.: 0.000 min
 Exp R.T. : 5.792 min
 Response: 0
 Conc: N.D.



#22 AR-1248-2

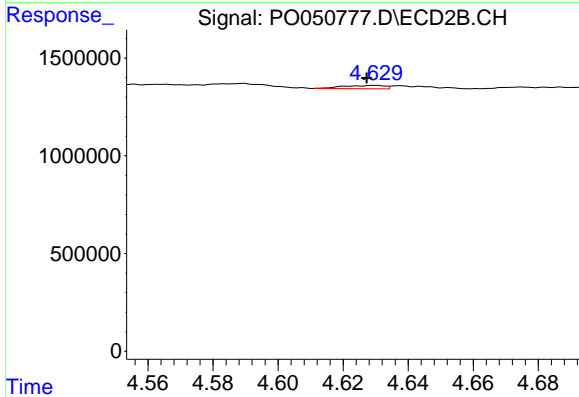
R.T.: 4.589 min
 Delta R.T.: 0.000 min
 Response: 253181
 Conc: 36.35 ng/ml



#23 AR-1248-3

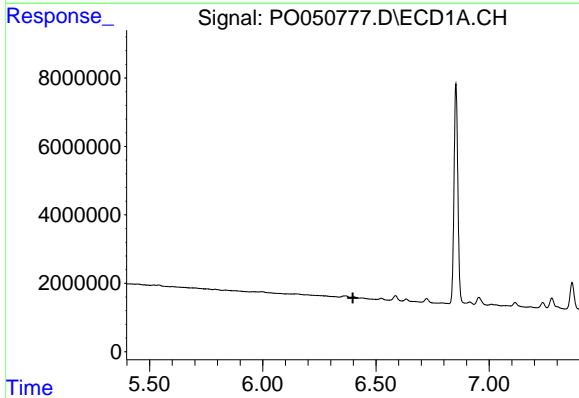
R.T.: 0.000 min
 Exp R.T. : 5.996 min
 Response: 0
 Conc: N.D.

Instrument :
 ECD_O
 ClientSampled :



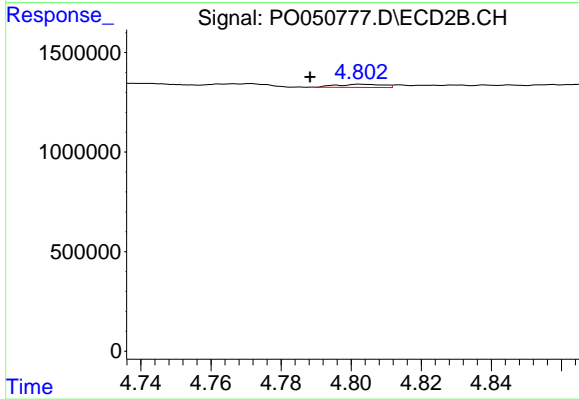
#23 AR-1248-3

R.T.: 4.630 min
 Delta R.T.: 0.003 min
 Response: 153733
 Conc: 21.99 ng/ml



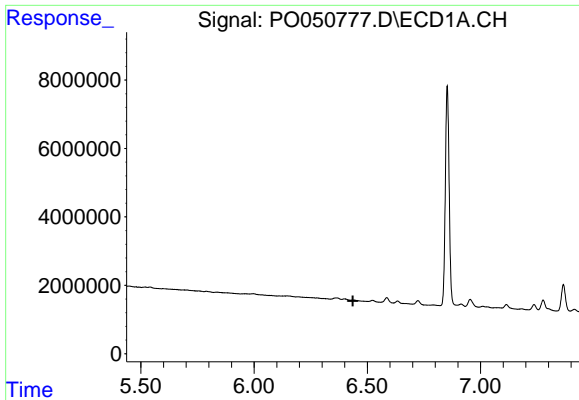
#24 AR-1248-4

R.T.: 0.000 min
 Exp R.T. : 6.398 min
 Response: 0
 Conc: N.D.



#24 AR-1248-4

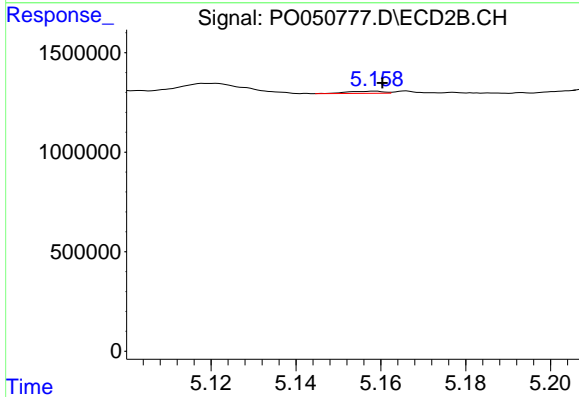
R.T.: 4.803 min
 Delta R.T.: 0.014 min
 Response: 148391
 Conc: 15.90 ng/ml



#25 AR-1248-5

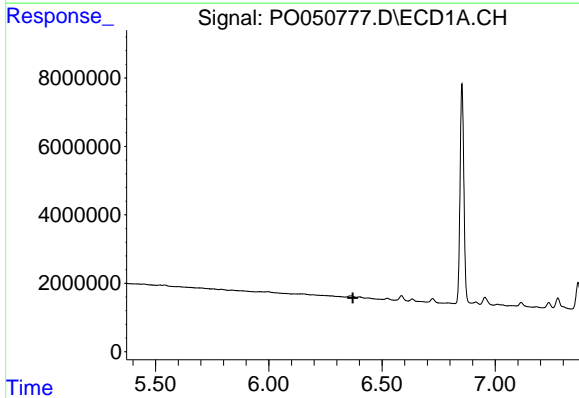
R.T.: 0.000 min
 Exp R.T. : 6.436 min
 Response: 0
 Conc: N.D.

Instrument :
 ECD_O
 ClientSampled :



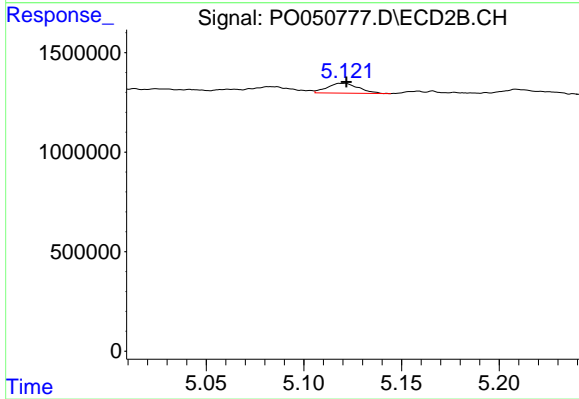
#25 AR-1248-5

R.T.: 5.159 min
 Delta R.T.: -0.002 min
 Response: 62102
 Conc: 6.46 ng/ml



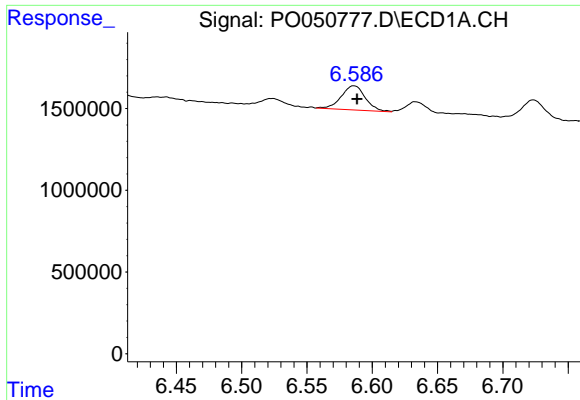
#26 AR-1254-1

R.T.: 0.000 min
 Exp R.T. : 6.371 min
 Response: 0
 Conc: N.D.



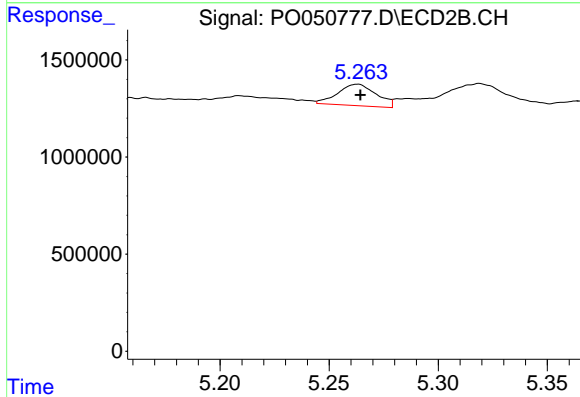
#26 AR-1254-1

R.T.: 5.121 min
 Delta R.T.: 0.000 min
 Response: 557832
 Conc: 29.09 ng/ml

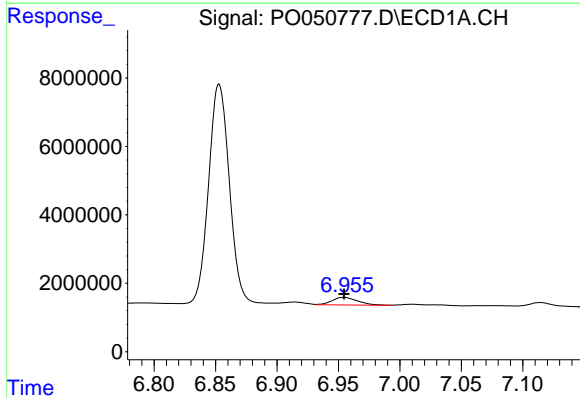


#27 AR-1254-2
 R.T.: 6.586 min
 Delta R.T.: -0.003 min
 Response: 1894055
 Conc: 56.02 ng/ml

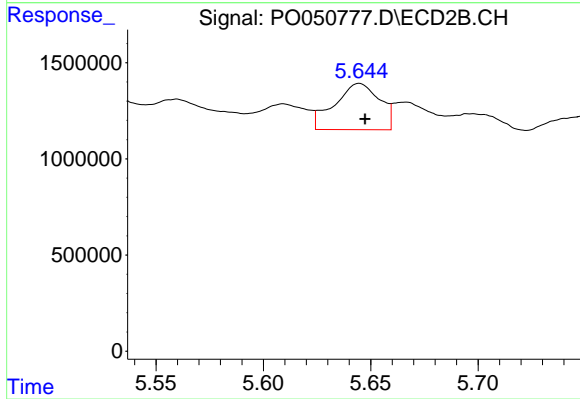
Instrument :
 ECD_O
 ClientSampled :



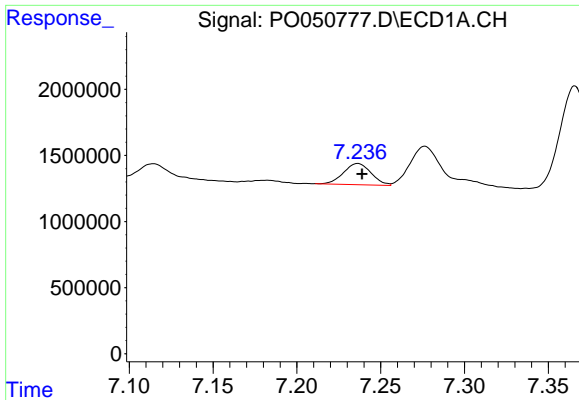
#27 AR-1254-2
 R.T.: 5.263 min
 Delta R.T.: 0.000 min
 Response: 1358109
 Conc: 78.24 ng/ml



#28 AR-1254-3
 R.T.: 6.955 min
 Delta R.T.: 0.000 min
 Response: 3247564
 Conc: 93.26 ng/ml



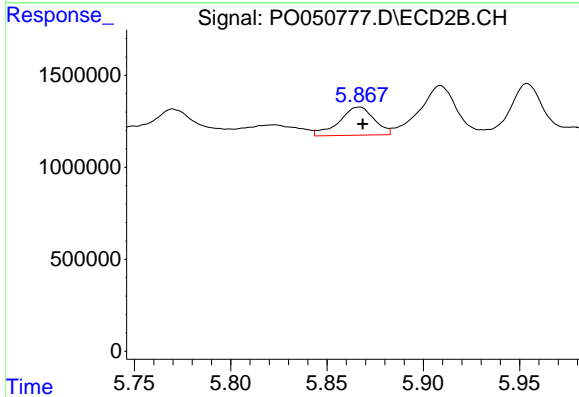
#28 AR-1254-3
 R.T.: 5.645 min
 Delta R.T.: -0.003 min
 Response: 3512397
 Conc: 124.09 ng/ml



#29 AR-1254-4

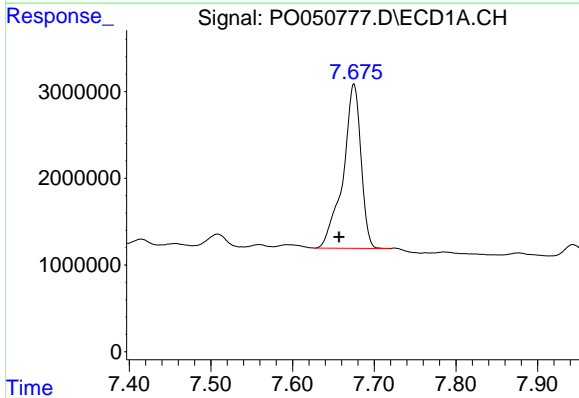
R.T.: 7.236 min
 Delta R.T.: -0.002 min
 Response: 1837781
 Conc: 79.45 ng/ml

Instrument :
 ECD_O
 ClientSampleId :



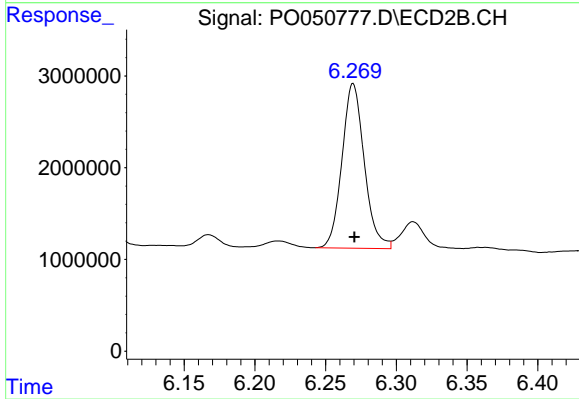
#29 AR-1254-4

R.T.: 5.867 min
 Delta R.T.: -0.002 min
 Response: 1936626
 Conc: 109.57 ng/ml



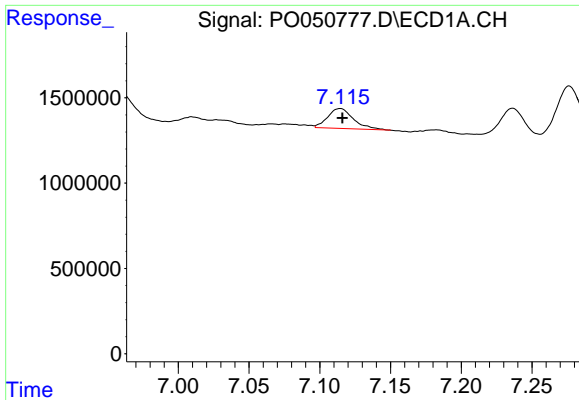
#30 AR-1254-5

R.T.: 7.675 min
 Delta R.T.: 0.018 min
 Response: 28802270
 Conc: 1173.10 ng/ml



#30 AR-1254-5

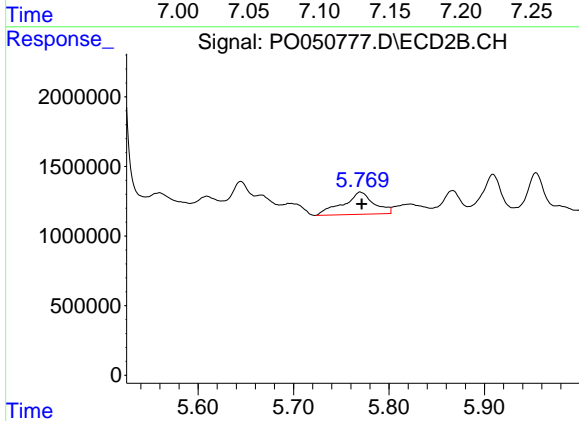
R.T.: 6.269 min
 Delta R.T.: 0.000 min
 Response: 19681875
 Conc: 736.15 ng/ml



#31 AR-1260-1

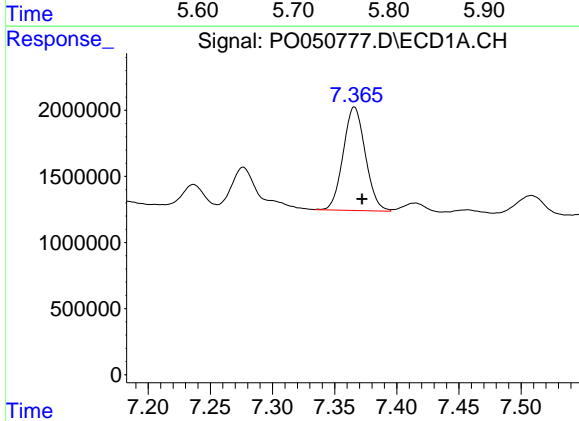
R.T.: 7.115 min
 Delta R.T.: -0.001 min
 Response: 1424815
 Conc: 55.38 ng/ml

Instrument :
 ECD_O
 ClientSampleId :



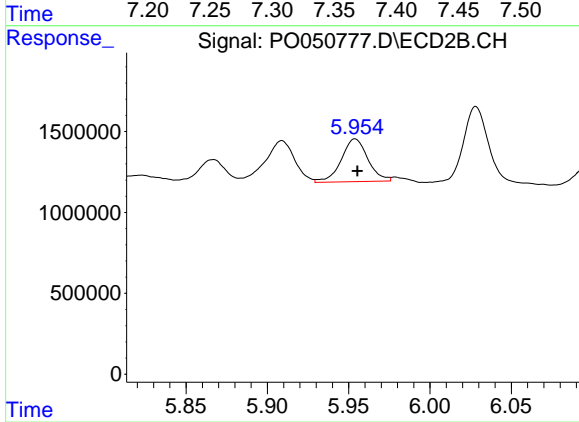
#31 AR-1260-1

R.T.: 5.770 min
 Delta R.T.: -0.002 min
 Response: 3569466
 Conc: 172.64 ng/ml



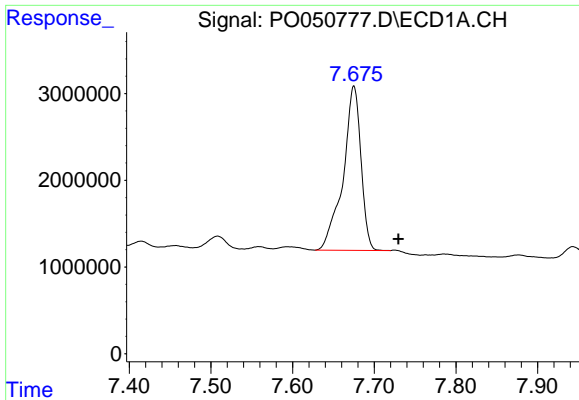
#32 AR-1260-2

R.T.: 7.366 min
 Delta R.T.: -0.006 min
 Response: 9713425
 Conc: 328.35 ng/ml



#32 AR-1260-2

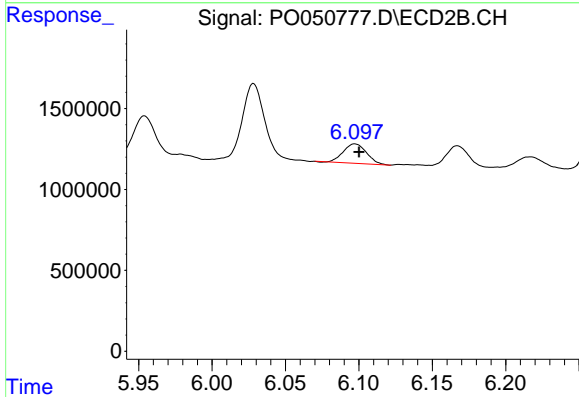
R.T.: 5.954 min
 Delta R.T.: -0.002 min
 Response: 3024067
 Conc: 105.31 ng/ml



#33 AR-1260-3

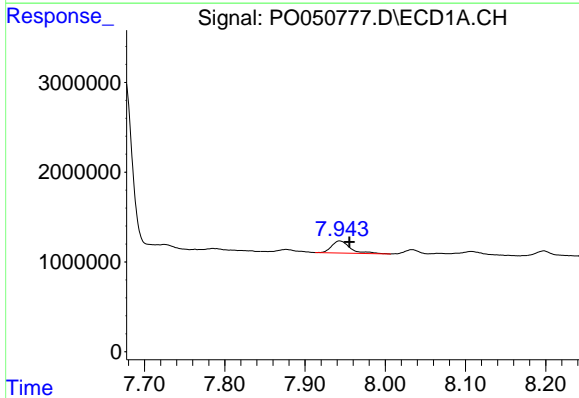
R.T.: 7.675 min
 Delta R.T.: -0.055 min
 Response: 28802270
 Conc: 1359.02 ng/ml

Instrument :
 ECD_O
 ClientSampled :



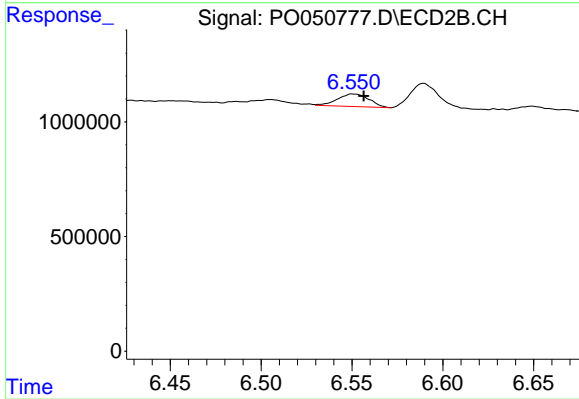
#33 AR-1260-3

R.T.: 6.097 min
 Delta R.T.: -0.003 min
 Response: 1327390
 Conc: 53.83 ng/ml



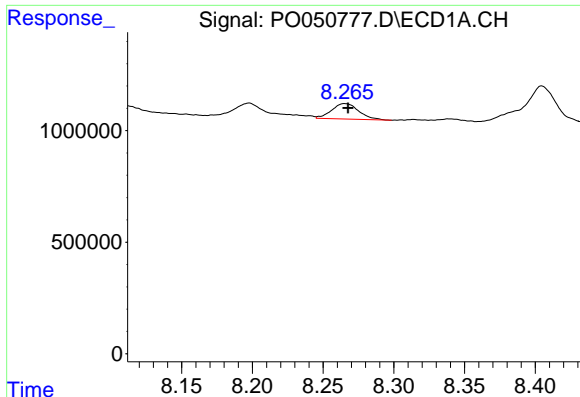
#34 AR-1260-4

R.T.: 7.943 min
 Delta R.T.: -0.012 min
 Response: 2187777
 Conc: 95.61 ng/ml



#34 AR-1260-4

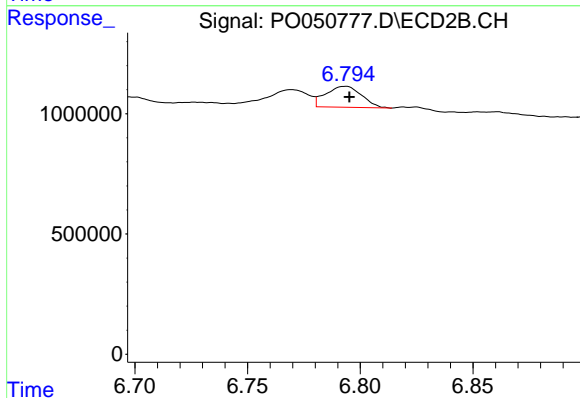
R.T.: 6.550 min
 Delta R.T.: -0.006 min
 Response: 666808
 Conc: 32.33 ng/ml



#35 AR-1260-5

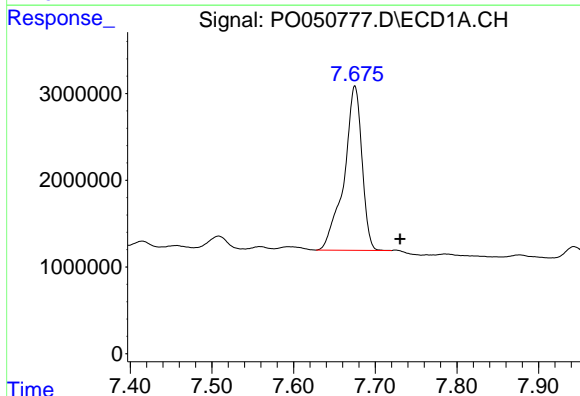
R.T.: 8.265 min
 Delta R.T.: -0.002 min
 Response: 927947
 Conc: 21.07 ng/ml

Instrument :
 ECD_O
 ClientSampled :



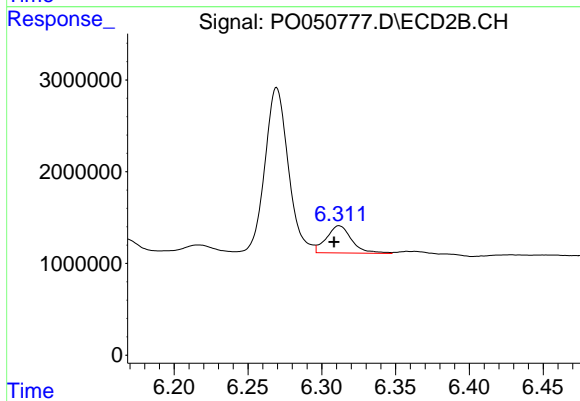
#35 AR-1260-5

R.T.: 6.794 min
 Delta R.T.: -0.002 min
 Response: 969030
 Conc: 18.65 ng/ml



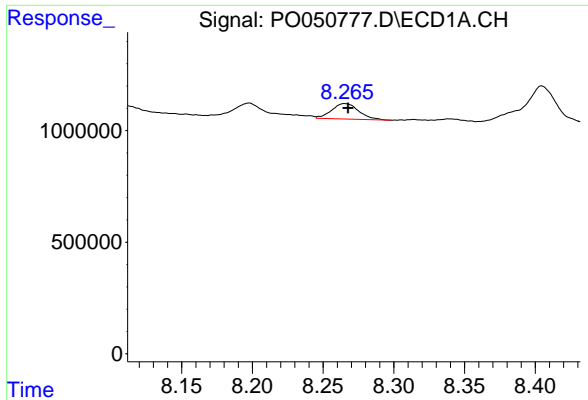
#36 AR-1262-1

R.T.: 7.675 min
 Delta R.T.: -0.055 min
 Response: 28802270
 Conc: 1167.48 ng/ml



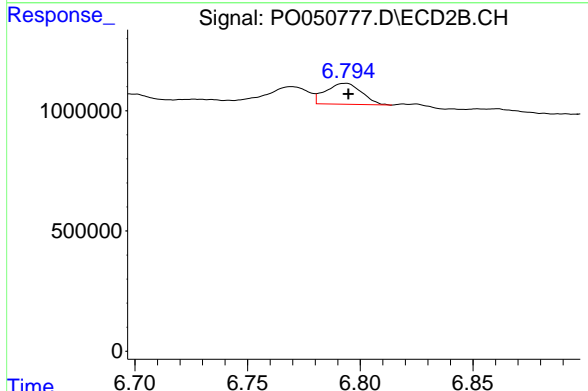
#36 AR-1262-1

R.T.: 6.312 min
 Delta R.T.: 0.003 min
 Response: 3516546
 Conc: 124.97 ng/ml

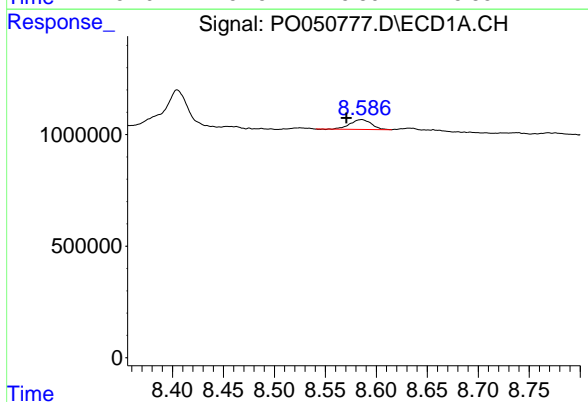


#37 AR-1262-2
 R.T.: 8.265 min
 Delta R.T.: -0.002 min
 Response: 927947
 Conc: 23.71 ng/ml

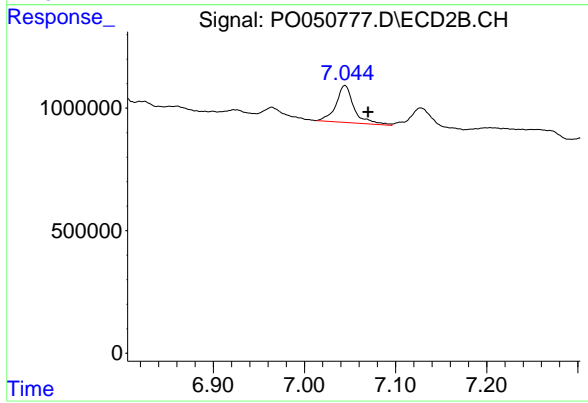
Instrument :
 ECD_O
 ClientSampleId :



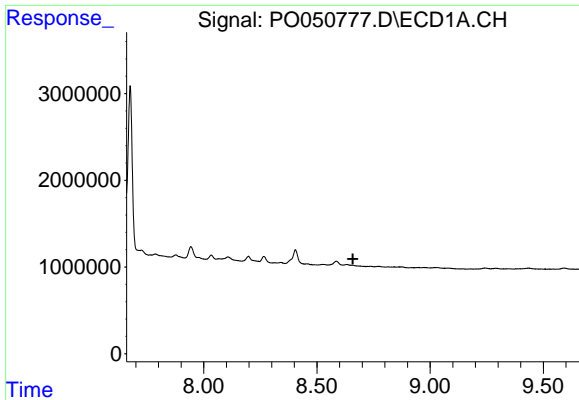
#37 AR-1262-2
 R.T.: 6.794 min
 Delta R.T.: -0.001 min
 Response: 969030
 Conc: 21.57 ng/ml



#38 AR-1262-3
 R.T.: 8.586 min
 Delta R.T.: 0.015 min
 Response: 642719
 Conc: 25.44 ng/ml



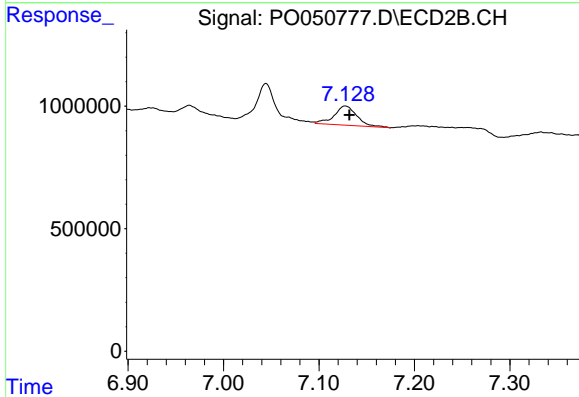
#38 AR-1262-3
 R.T.: 7.045 min
 Delta R.T.: -0.025 min
 Response: 2076653
 Conc: 115.66 ng/ml



#39 AR-1262-4

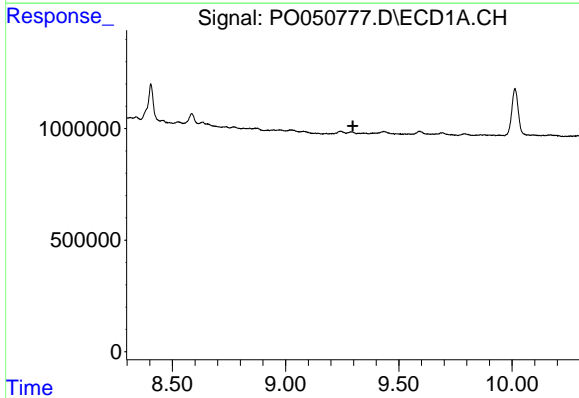
R.T.: 0.000 min
 Exp R.T. : 8.658 min
 Response: 0
 Conc: N.D.

Instrument :
 ECD_O
 ClientSampleId :



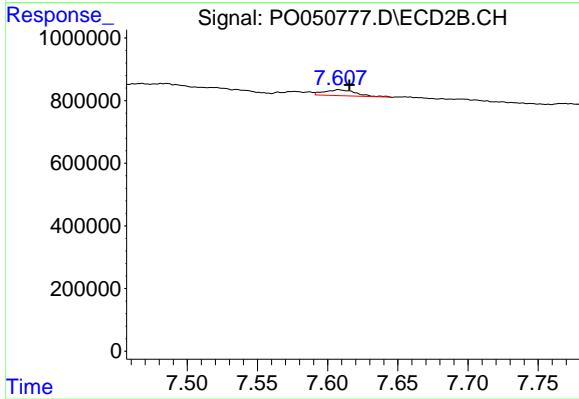
#39 AR-1262-4

R.T.: 7.127 min
 Delta R.T.: -0.004 min
 Response: 1276092
 Conc: 43.38 ng/ml



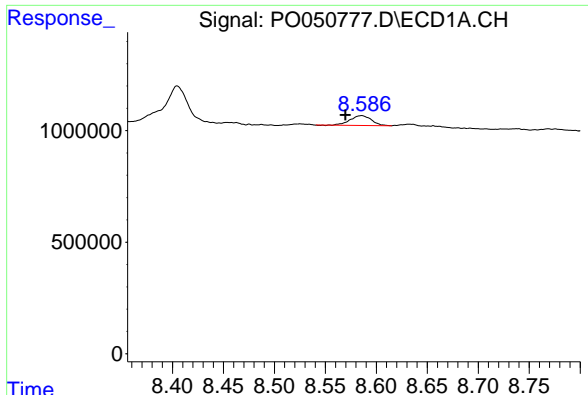
#40 AR-1262-5

R.T.: 0.000 min
 Exp R.T. : 9.297 min
 Response: 0
 Conc: N.D.



#40 AR-1262-5

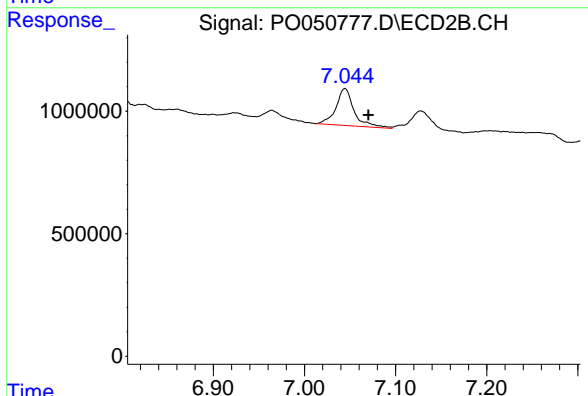
R.T.: 7.608 min
 Delta R.T.: -0.008 min
 Response: 275711
 Conc: 23.76 ng/ml



#41 AR-1268-1

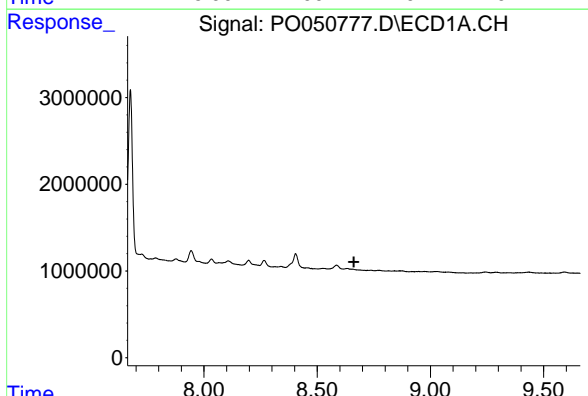
R.T.: 8.586 min
 Delta R.T.: 0.016 min
 Response: 642719
 Conc: 12.74 ng/ml

Instrument :
 ECD_O
 ClientSampled :



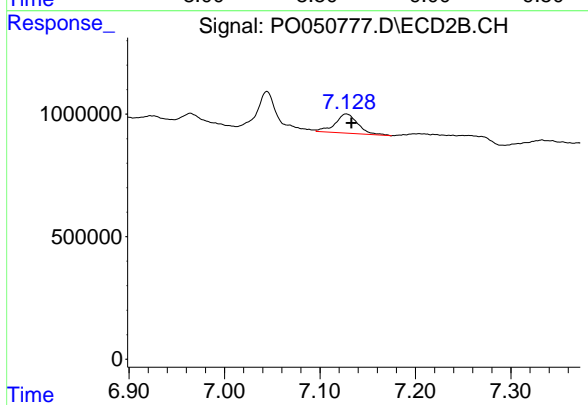
#41 AR-1268-1

R.T.: 7.045 min
 Delta R.T.: -0.026 min
 Response: 2076653
 Conc: 37.70 ng/ml



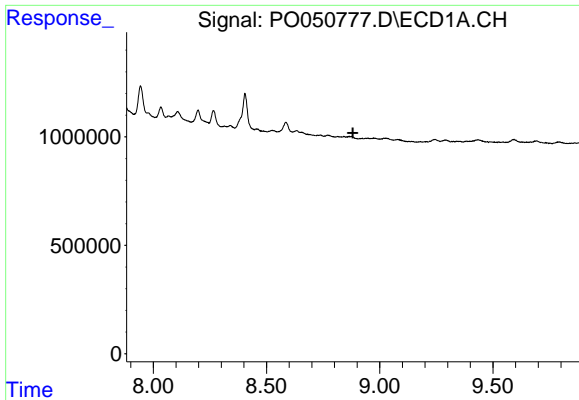
#42 AR-1268-2

R.T.: 0.000 min
 Exp R.T. : 8.662 min
 Response: 0
 Conc: N.D.



#42 AR-1268-2

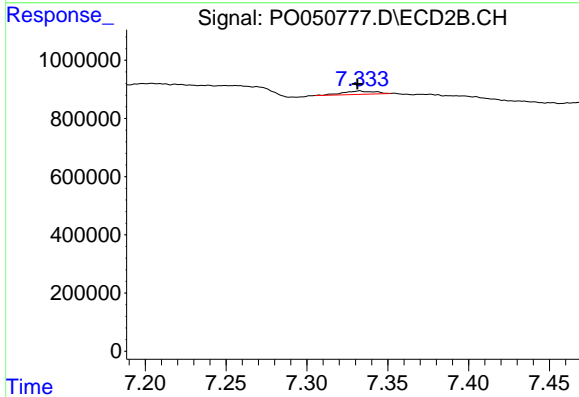
R.T.: 7.127 min
 Delta R.T.: -0.005 min
 Response: 1276092
 Conc: 26.77 ng/ml



#43 AR-1268-3

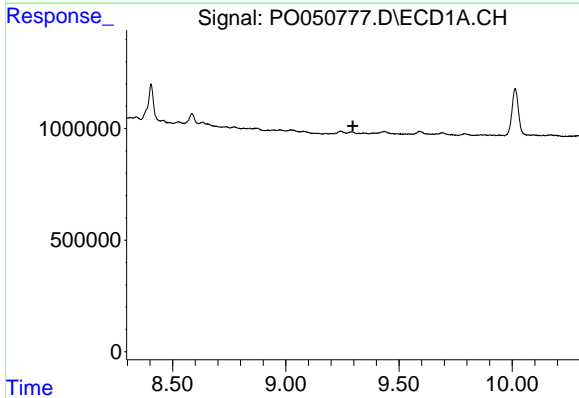
R.T.: 0.000 min
 Exp R.T. : 8.882 min
 Response: 0
 Conc: N.D.

Instrument :
 ECD_O
 ClientSampleId :



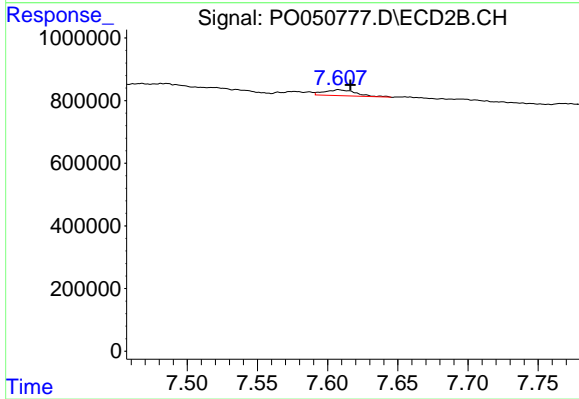
#43 AR-1268-3

R.T.: 7.333 min
 Delta R.T.: 0.001 min
 Response: 154655
 Conc: 3.59 ng/ml



#44 AR-1268-4

R.T.: 0.000 min
 Exp R.T. : 9.296 min
 Response: 0
 Conc: N.D.



#44 AR-1268-4

R.T.: 7.608 min
 Delta R.T.: -0.008 min
 Response: 275711
 Conc: 19.74 ng/ml