

Data Path : Z:\pestpcbsrv\HPCHEM1\ECD_0\Data\PO110219\
 Data File : P0063486.D
 Signal(s) : Signal #1: ECD1A.CH Signal #2: ECD2B.CH
 Acq On : 02 Nov 2019 19:11
 Operator : HP/AJ
 Sample : K5637-05
 Misc :
 ALS Vial : 32 Sample Multiplier: 1

Instrument :
 ECD_0
 ClientSampleId :
 S4-05-A

Integration File signal 1: autoint1.e
 Integration File signal 2: autoint2.e
 Quant Time: Nov 04 00:38:32 2019
 Quant Method : Z:\pestpcbsrv\HPCHEM1\ECD_0\methods\PO102919.M
 Quant Title : GC EXTRACTABLES
 QLast Update : Wed Oct 30 02:25:39 2019
 Response via : Initial Calibration
 Integrator: ChemStation 6890 Scale Mode: Small noise peaks clipped

Volume Inj. : 2 µl
 Signal #1 Phase : ZB-MR1 Signal #2 Phase: ZB-MR2
 Signal #1 Info : 30Mx0.32mmx 0.50µ Signal #2 Info : 30M x 0.32mm x 0.25µm

Compound	RT#1	RT#2	Resp#1	Resp#2	ng/ml	ng/ml
----------	------	------	--------	--------	-------	-------

 System Monitoring Compounds

1) SA Tetrachlo...	4.311	3.478	1022761	1035856	17.549	18.967
2) SA Decachlor...	9.922	8.313	666869	455562	11.461	10.656

Target Compounds

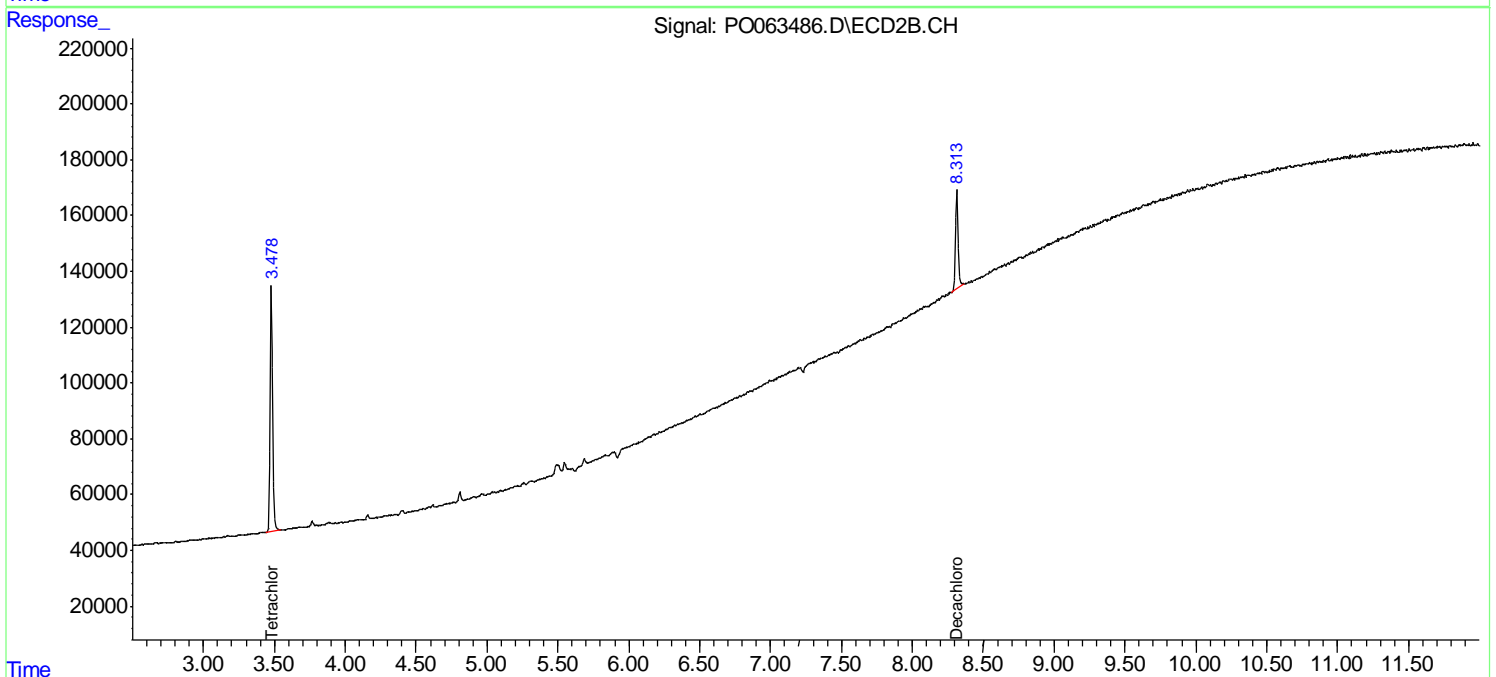
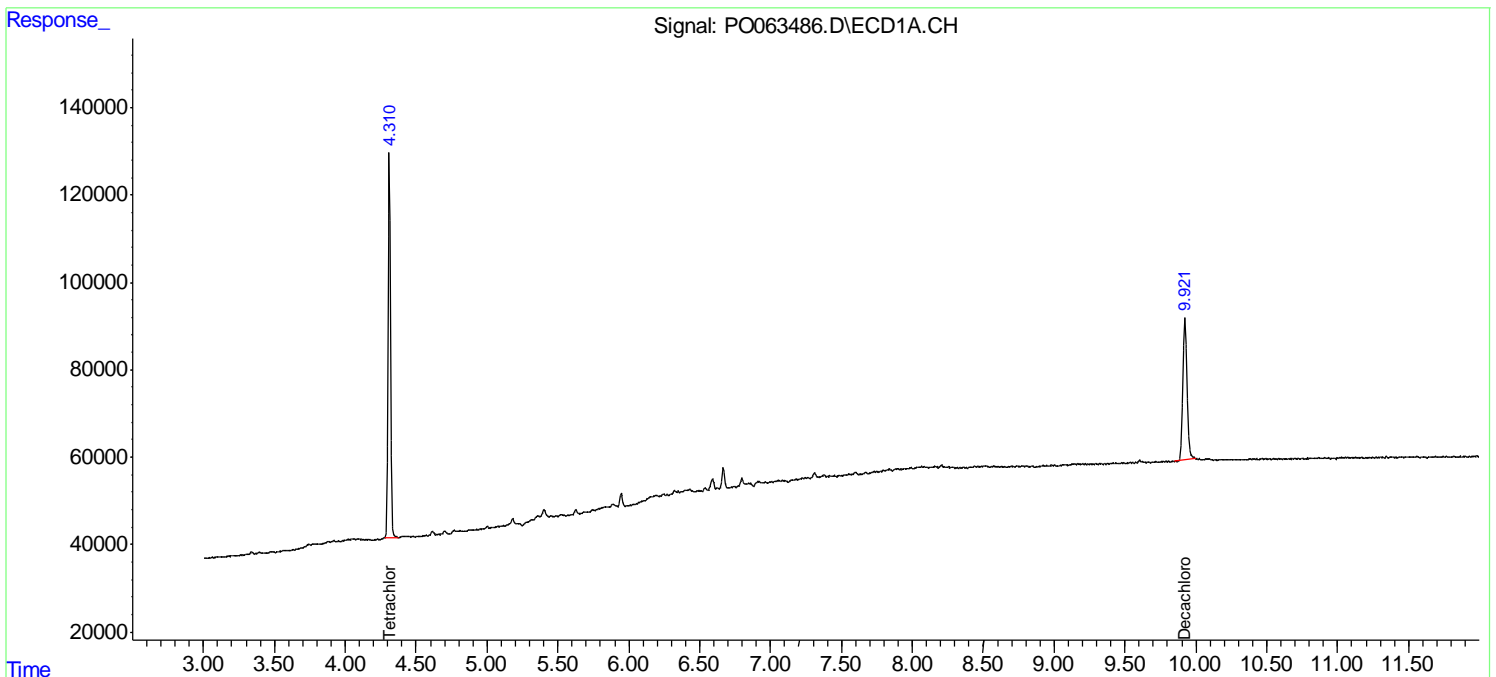
(f)=RT Delta > 1/2 Window (#)=Amounts differ by > 25% (m)=manual int.

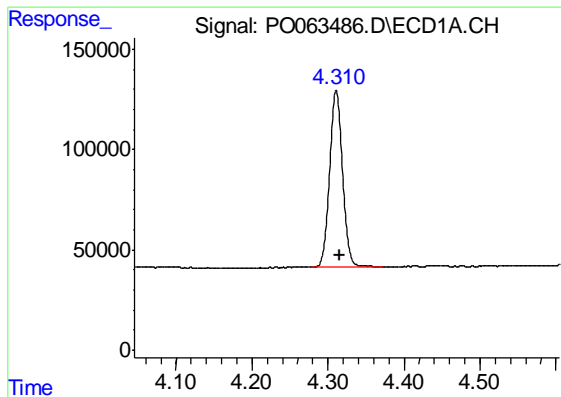
Data Path : Z:\pestpcbsrv\HPCHEM1\ECD_O\Data\PO110219\
 Data File : PO063486.D
 Signal(s) : Signal #1: ECD1A.CH Signal #2: ECD2B.CH
 Acq On : 02 Nov 2019 19:11
 Operator : HP/AJ
 Sample : K5637-05
 Misc :
 ALS Vial : 32 Sample Multiplier: 1

Instrument :
 ECD_O
 ClientSampled :
 S4-05-A

Integration File signal 1: autoint1.e
 Integration File signal 2: autoint2.e
 Quant Time: Nov 04 00:38:32 2019
 Quant Method : Z:\pestpcbsrv\HPCHEM1\ECD_O\methods\PO102919.M
 Quant Title : GC EXTRACTABLES
 QLast Update : Wed Oct 30 02:25:39 2019
 Response via : Initial Calibration
 Integrator: ChemStation 6890 Scale Mode: Small noise peaks clipped

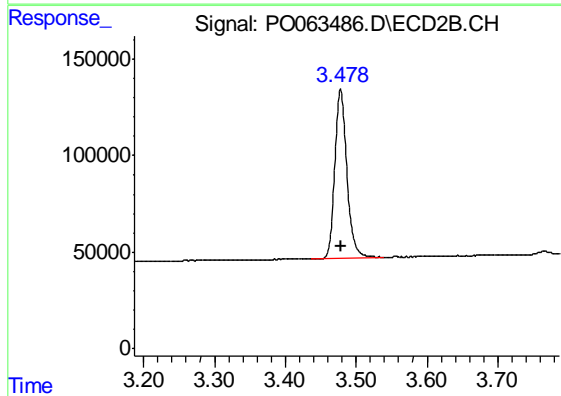
Volume Inj. : 2 µl
 Signal #1 Phase : ZB-MR1 Signal #2 Phase: ZB-MR2
 Signal #1 Info : 30Mx0.32mmx 0.50µ Signal #2 Info : 30M x 0.32mm x 0.25µm



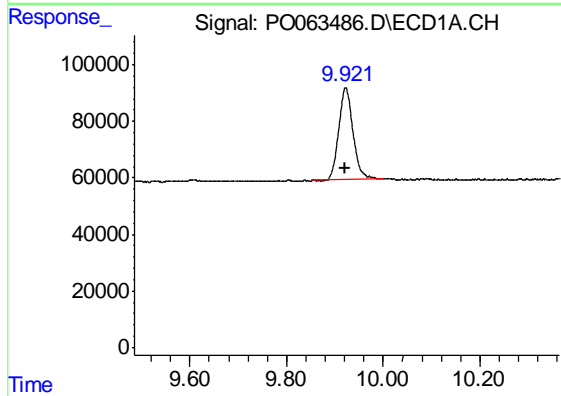


#1 Tetrachloro-m-xylene
 R.T.: 4.311 min
 Delta R.T.: -0.005 min
 Response: 1022761
 Conc: 17.55 ng/ml

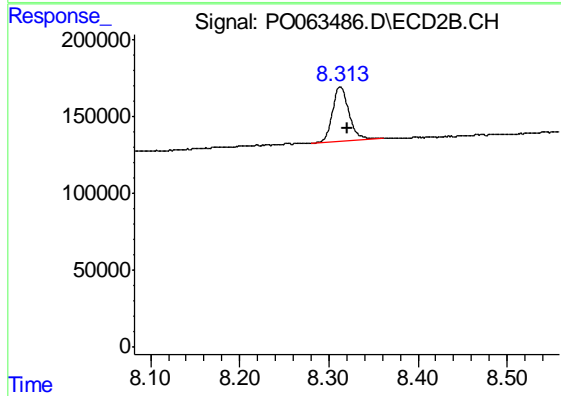
Instrument :
 ECD_O
 ClientSampled :
 S4-05-A



#1 Tetrachloro-m-xylene
 R.T.: 3.478 min
 Delta R.T.: 0.000 min
 Response: 1035856
 Conc: 18.97 ng/ml



#2 Decachlorobiphenyl
 R.T.: 9.922 min
 Delta R.T.: 0.000 min
 Response: 666869
 Conc: 11.46 ng/ml



#2 Decachlorobiphenyl
 R.T.: 8.313 min
 Delta R.T.: -0.008 min
 Response: 455562
 Conc: 10.66 ng/ml