

Data Path : Z:\pestpcbsrv\HPCHEM1\ECD\_O\Data\PO110618\  
 Data File : P0051123.D  
 Signal(s) : Signal #1: ECD1A.CH Signal #2: ECD2B.CH  
 Acq On : 06 Nov 2018 1:08  
 Operator : SM/SJ  
 Sample : J5808-09  
 Misc :  
 ALS Vial : 27 Sample Multiplier: 1

Instrument :  
 ECD\_O  
 ClientSampleId :  
 110118-DBRI-E-U-S

Integration File signal 1: autoint1.e  
 Integration File signal 2: autoint2.e  
 Quant Time: Nov 06 02:59:34 2018  
 Quant Method : Z:\pestpcbsrv\HPCHEM1\ECD\_O\methods\PO110518.M  
 Quant Title : GC EXTRACTABLES  
 QLast Update : Tue Nov 06 00:37:39 2018  
 Response via : Initial Calibration  
 Integrator: ChemStation 6890 Scale Mode: Small noise peaks clipped

Volume Inj. : 2 µl  
 Signal #1 Phase : ZB-MR1 Signal #2 Phase: ZB-MR2  
 Signal #1 Info : 30Mx0.32mmx 0.50µ Signal #2 Info : 30M x 0.32mm x 0.25µm

Compound	RT#1	RT#2	Resp#1	Resp#2	ng/ml	ng/ml
----------	------	------	--------	--------	-------	-------

-----  
 System Monitoring Compounds

1) SA Tetrachlo...	4.344	3.340	7927108	3644809	21.248m	17.667m
2) SA Decachlor...	9.991	8.079	6341054	4785066	21.471	22.540

Target Compounds  
 -----

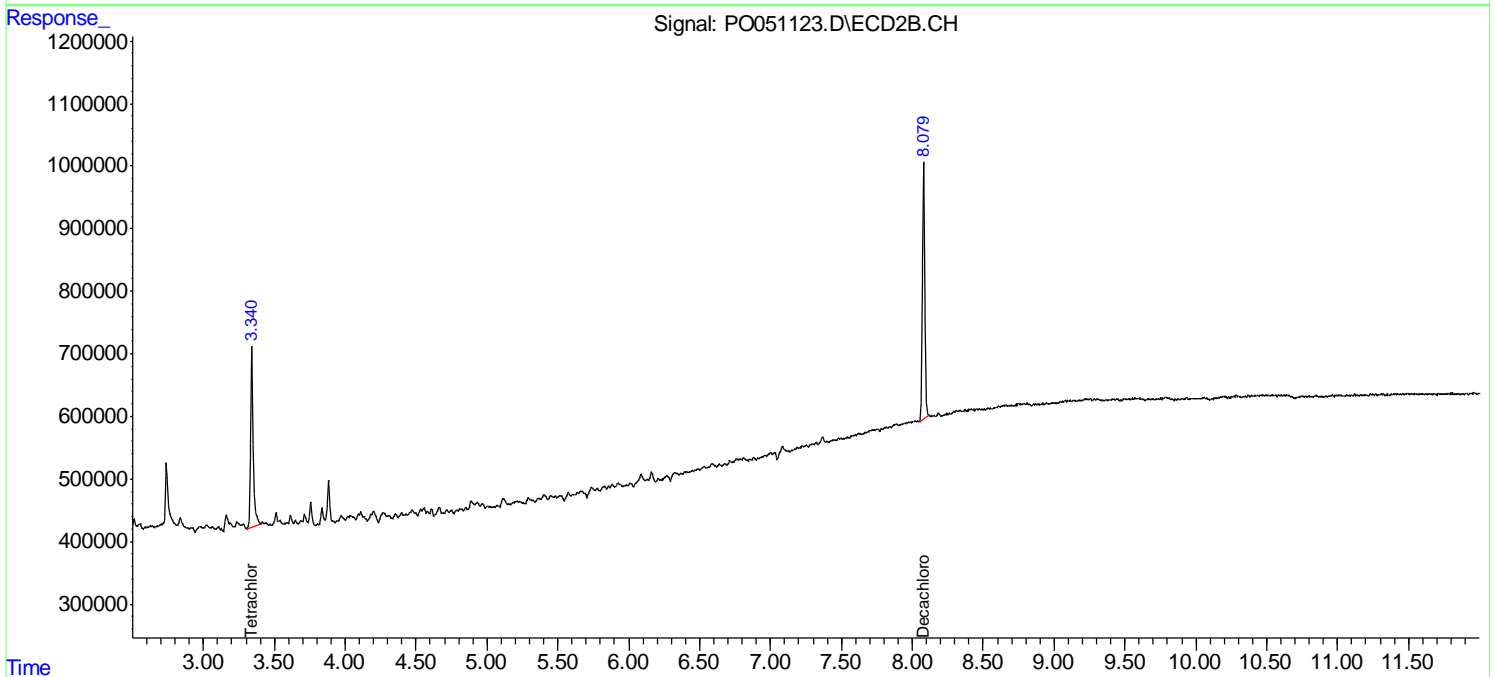
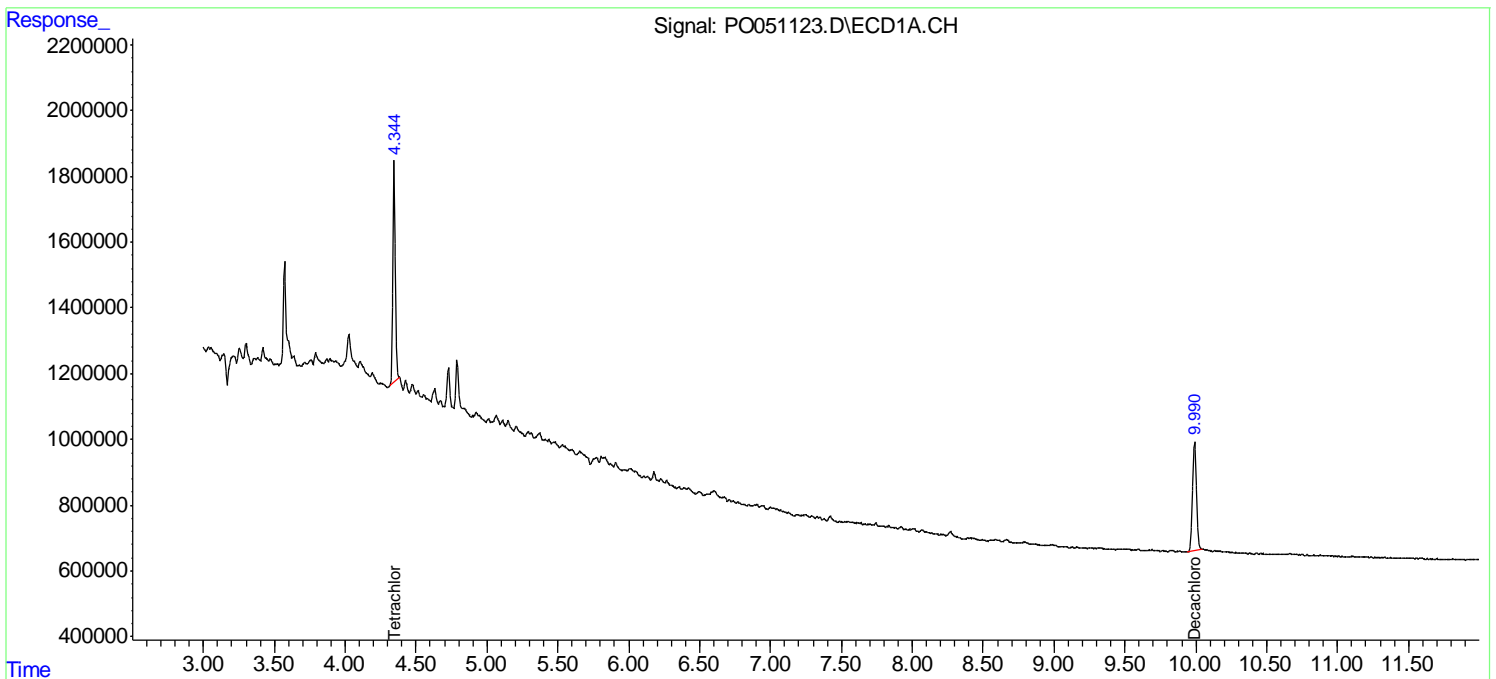
(f)=RT Delta > 1/2 Window (#)=Amounts differ by > 25% (m)=manual int.

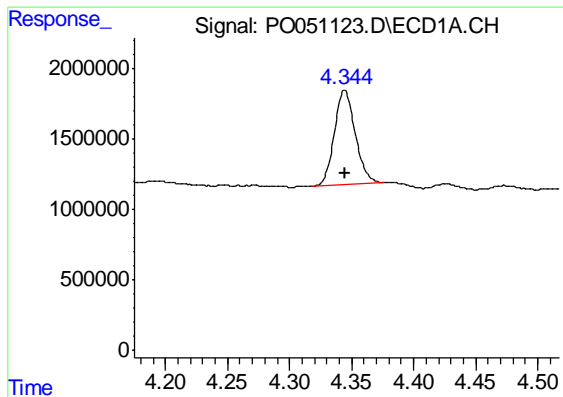
Data Path : Z:\pestpcbsrv\HPCHEM1\ECD\_O\Data\PO110618\  
 Data File : PO051123.D  
 Signal(s) : Signal #1: ECD1A.CH Signal #2: ECD2B.CH  
 Acq On : 06 Nov 2018 1:08  
 Operator : SM/SJ  
 Sample : J5808-09  
 Misc :  
 ALS Vial : 27 Sample Multiplier: 1

Instrument :  
 ECD\_O  
 ClientSampleId :  
 110118-DBRI-E-U-S

Integration File signal 1: autoint1.e  
 Integration File signal 2: autoint2.e  
 Quant Time: Nov 06 02:59:34 2018  
 Quant Method : Z:\pestpcbsrv\HPCHEM1\ECD\_O\methods\PO110518.M  
 Quant Title : GC EXTRACTABLES  
 QLast Update : Tue Nov 06 00:37:39 2018  
 Response via : Initial Calibration  
 Integrator: ChemStation 6890 Scale Mode: Small noise peaks clipped

Volume Inj. : 2 µl  
 Signal #1 Phase : ZB-MR1 Signal #2 Phase: ZB-MR2  
 Signal #1 Info : 30Mx0.32mmx 0.50µ Signal #2 Info : 30M x 0.32mm x 0.25µm

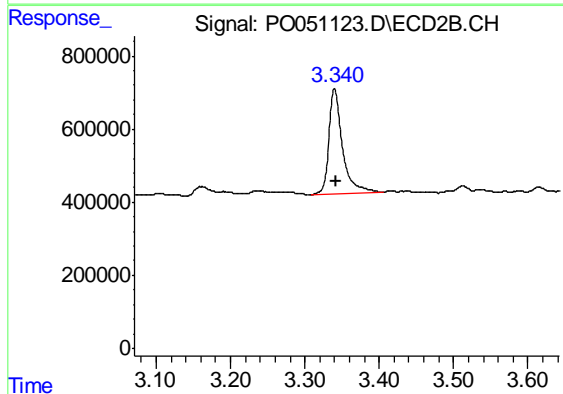




#1 Tetrachloro-m-xylene

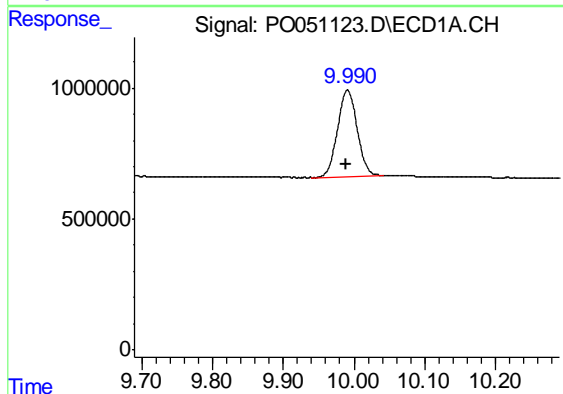
R.T.: 4.344 min  
 Delta R.T.: -0.001 min  
 Response: 7927108  
 Conc: 21.25 ng/ml m

Instrument :  
 ECD\_O  
 ClientSampleId :  
 110118-DBRI-E-U-S



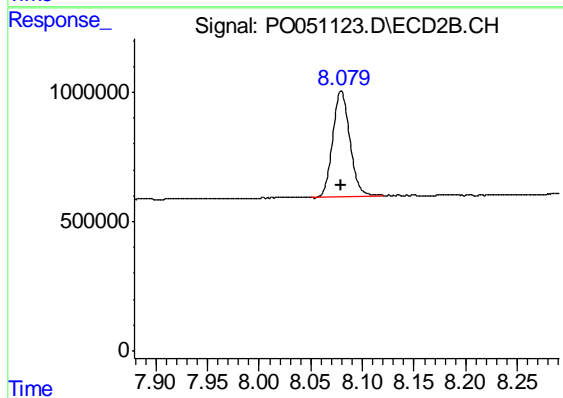
#1 Tetrachloro-m-xylene

R.T.: 3.340 min  
 Delta R.T.: -0.002 min  
 Response: 3644809  
 Conc: 17.67 ng/ml m



#2 Decachlorobiphenyl

R.T.: 9.991 min  
 Delta R.T.: 0.002 min  
 Response: 6341054  
 Conc: 21.47 ng/ml



#2 Decachlorobiphenyl

R.T.: 8.079 min  
 Delta R.T.: 0.000 min  
 Response: 4785066  
 Conc: 22.54 ng/ml