

Data Path : Z:\pestpcbsrv\HPCHEM1\ECD_0\Data\PO111218\
 Data File : PO051400.D
 Signal(s) : Signal #1: ECD1A.CH Signal #2: ECD2B.CH
 Acq On : 12 Nov 2018 15:00
 Operator : SM/SJ
 Sample : PB114494BL
 Misc :
 ALS Vial : 8 Sample Multiplier: 1

Instrument :
 ECD_0
 ClientSampleId :

Integration File signal 1: autoint1.e
 Integration File signal 2: autoint2.e
 Quant Time: Nov 13 00:29:04 2018
 Quant Method : Z:\pestpcbsrv\HPCHEM1\ECD_0\methods\PO110918.M
 Quant Title : GC EXTRACTABLES
 QLast Update : Thu Nov 08 14:50:13 2018
 Response via : Initial Calibration
 Integrator: ChemStation 6890 Scale Mode: Small noise peaks clipped

Volume Inj. : 2 µl
 Signal #1 Phase : ZB-MR1 Signal #2 Phase: ZB-MR2
 Signal #1 Info : 30Mx0.32mmx 0.50µ Signal #2 Info : 30M x 0.32mm x 0.25µm

Compound	RT#1	RT#2	Resp#1	Resp#2	ng/ml	ng/ml

System Monitoring Compounds						
1) SA Tetrachlo...	4.331	3.332	12690406	4574350	22.510	20.500
2) SA Decachlor...	9.960	8.061	7759574	4590756	20.912	20.712
Target Compounds						
24) L5 AR-1248-4	6.342	0.000	725057	0	36.338	N.D. #
26) L6 AR-1254-1	6.342	0.000	725057	0	37.356	N.D. #

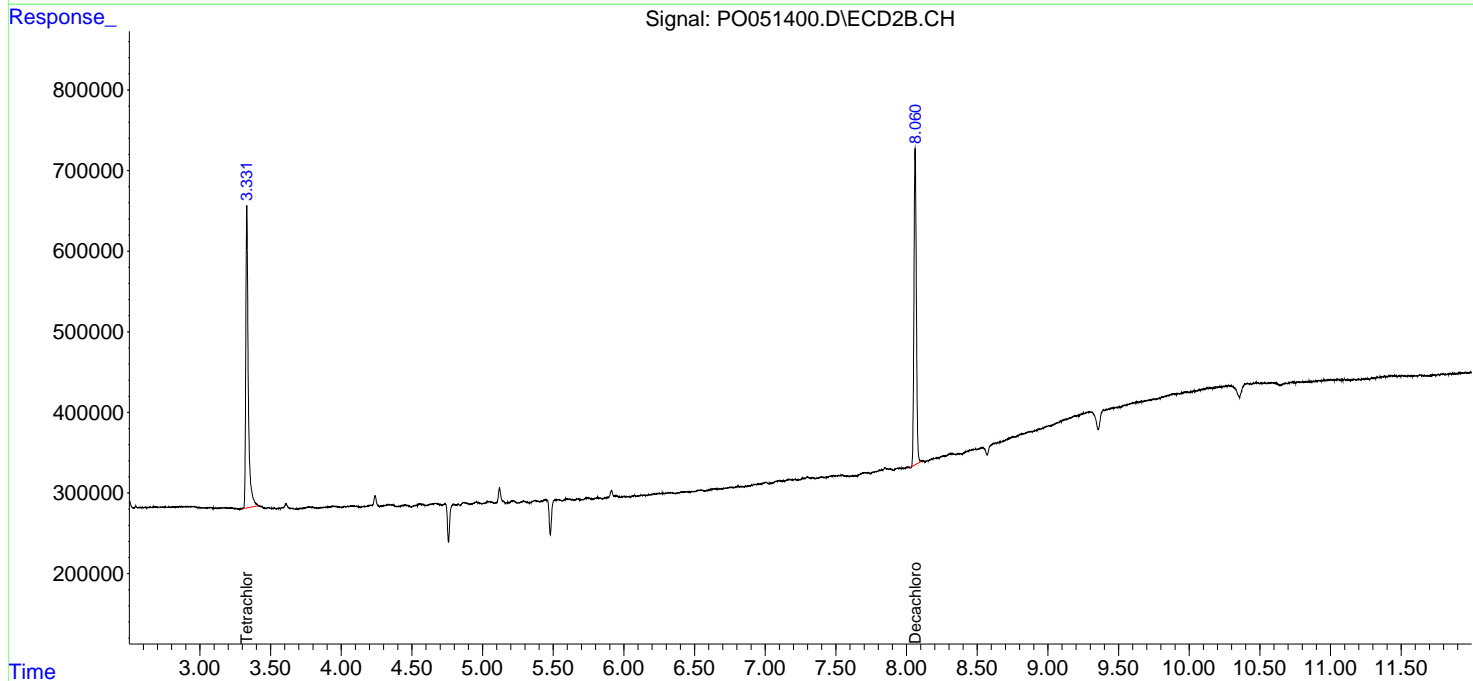
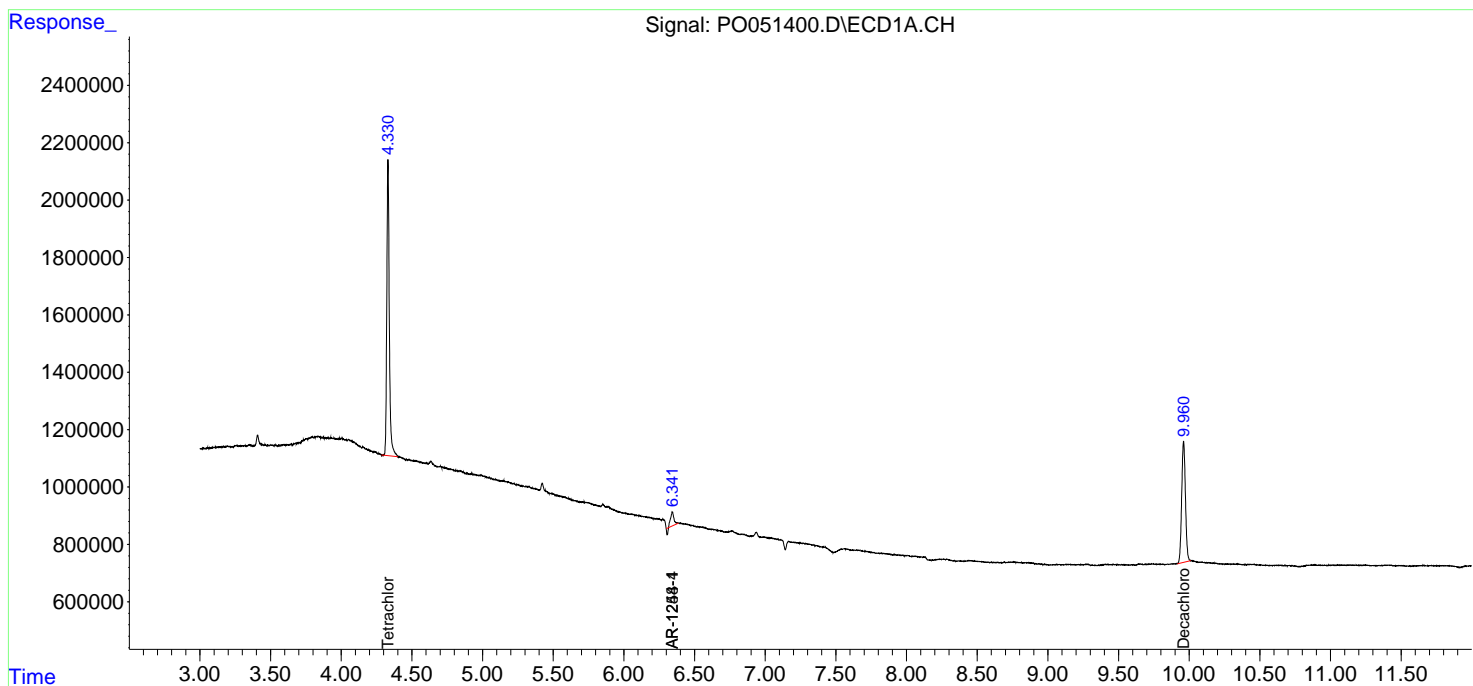
(f)=RT Delta > 1/2 Window (#)=Amounts differ by > 25% (m)=manual int.

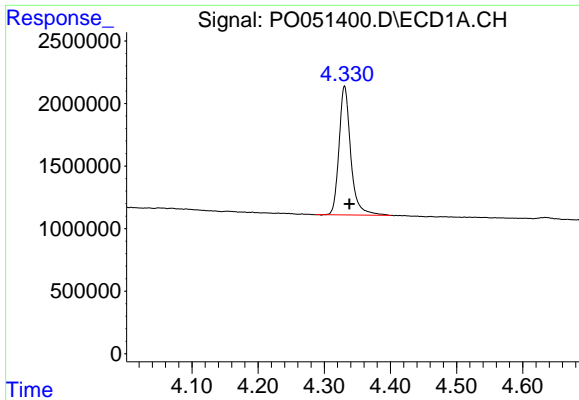
Data Path : Z:\pestpcbsrv\HPCHEM1\ECD_0\Data\PO111218\
 Data File : PO051400.D
 Signal(s) : Signal #1: ECD1A.CH Signal #2: ECD2B.CH
 Acq On : 12 Nov 2018 15:00
 Operator : SM/SJ
 Sample : PB114494BL
 Misc :
 ALS Vial : 8 Sample Multiplier: 1

Instrument :
 ECD_O
 ClientSampled :

Integration File signal 1: autoint1.e
 Integration File signal 2: autoint2.e
 Quant Time: Nov 13 00:29:04 2018
 Quant Method : Z:\pestpcbsrv\HPCHEM1\ECD_0\methods\PO110918.M
 Quant Title : GC EXTRACTABLES
 QLast Update : Thu Nov 08 14:50:13 2018
 Response via : Initial Calibration
 Integrator: ChemStation 6890 Scale Mode: Small noise peaks clipped

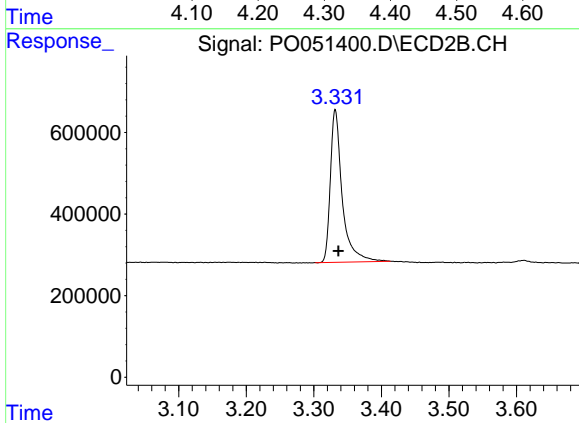
Volume Inj. : 2 µl
 Signal #1 Phase : ZB-MR1 Signal #2 Phase: ZB-MR2
 Signal #1 Info : 30Mx0.32mmx 0.50µ Signal #2 Info : 30M x 0.32mm x 0.25µm



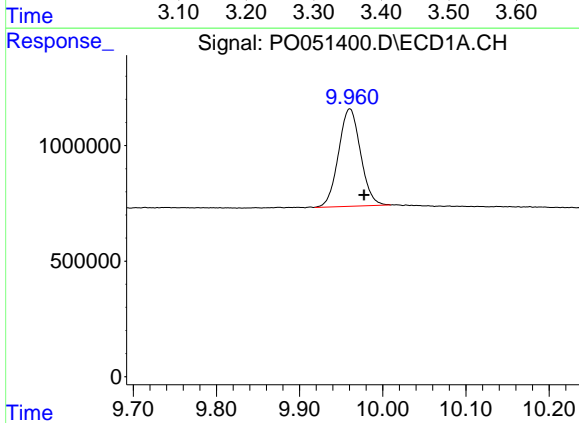


#1 Tetrachloro-m-xylene
 R.T.: 4.331 min
 Delta R.T.: -0.007 min
 Response: 12690406
 Conc: 22.51 ng/ml

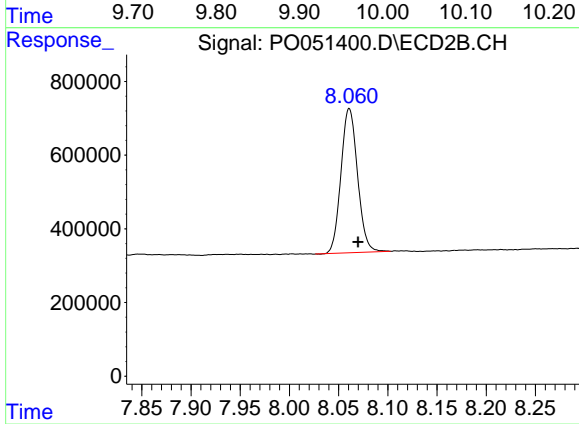
Instrument :
 ECD_O
 ClientSampleId :



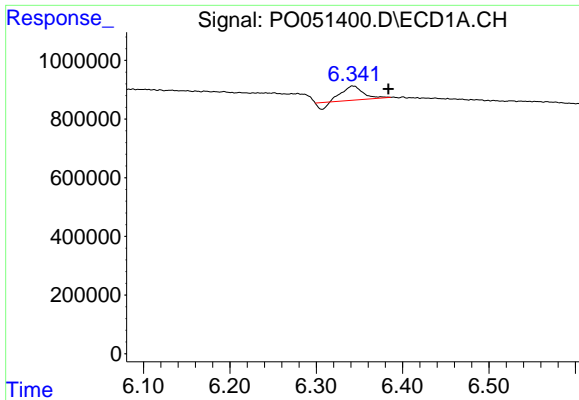
#1 Tetrachloro-m-xylene
 R.T.: 3.332 min
 Delta R.T.: -0.004 min
 Response: 4574350
 Conc: 20.50 ng/ml



#2 Decachlorobiphenyl
 R.T.: 9.960 min
 Delta R.T.: -0.017 min
 Response: 7759574
 Conc: 20.91 ng/ml

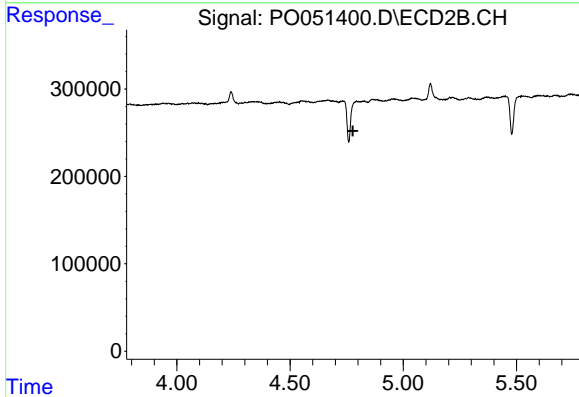


#2 Decachlorobiphenyl
 R.T.: 8.061 min
 Delta R.T.: -0.009 min
 Response: 4590756
 Conc: 20.71 ng/ml

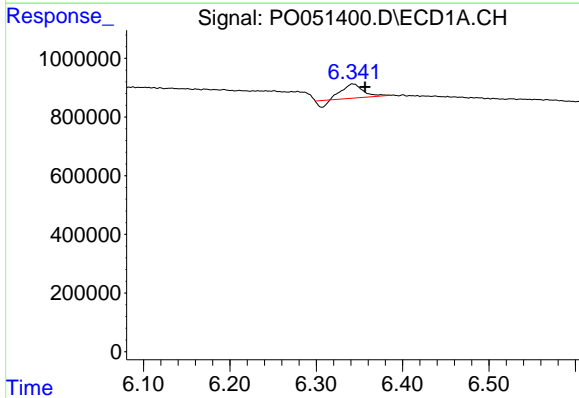


#24 AR-1248-4
 R.T.: 6.342 min
 Delta R.T.: -0.042 min
 Response: 725057
 Conc: 36.34 ng/ml

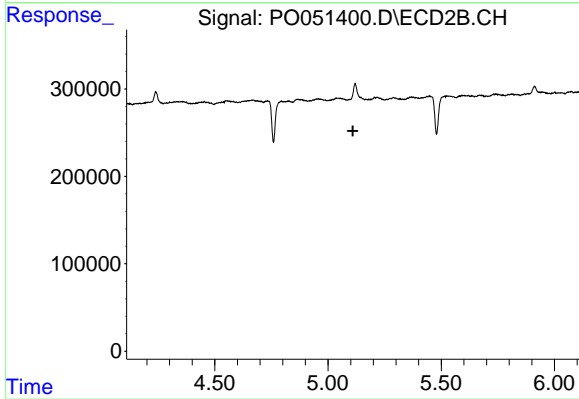
Instrument :
 ECD_O
 ClientSampled :



#24 AR-1248-4
 R.T.: 0.000 min
 Exp R.T. : 4.778 min
 Response: 0
 Conc: N.D.



#26 AR-1254-1
 R.T.: 6.342 min
 Delta R.T.: -0.015 min
 Response: 725057
 Conc: 37.36 ng/ml



#26 AR-1254-1
 R.T.: 0.000 min
 Exp R.T. : 5.110 min
 Response: 0
 Conc: N.D.