

Data Path : Z:\pestpcbsrv\HPCHEM1\ECD_0\Data\PO112918\
 Data File : P0051961.D
 Signal(s) : Signal #1: ECD1A.CH Signal #2: ECD2B.CH
 Acq On : 29 Nov 2018 13:27
 Operator : SM/SJ
 Sample : AR1221ICC500
 Misc :
 ALS Vial : 8 Sample Multiplier: 1

Instrument :
 ECD_0
 ClientSampleId :
 AR1221ICC500

Integration File signal 1: autoint1.e
 Integration File signal 2: autoint2.e
 Quant Time: Nov 30 03:41:15 2018
 Quant Method : Z:\pestpcbsrv\HPCHEM1\ECD_0\methods\PO112918.M
 Quant Title : GC EXTRACTABLES
 QLast Update : Fri Nov 30 03:41:08 2018
 Response via : Initial Calibration
 Integrator: ChemStation 6890 Scale Mode: Small noise peaks clipped

Volume Inj. : 2 µl
 Signal #1 Phase : ZB-MR1 Signal #2 Phase: ZB-MR2
 Signal #1 Info : 30Mx0.32mmx 0.50µ Signal #2 Info : 30M x 0.32mm x 0.25µm

Compound	RT#1	RT#2	Resp#1	Resp#2	ng/ml	ng/ml

System Monitoring Compounds						
1) SA Tetrachlo...	4.286	3.284	106.0E6	37516525	50.000	50.000
2) SA Decachlor...	9.897	8.017	66306815	28390272	50.000	50.000
Target Compounds						
8) L2 AR-1221-1	4.498	3.488	9991355	3585164	500.000	500.000
9) L2 AR-1221-2	4.584	3.567	7139293	2691199	500.000	500.000
10) L2 AR-1221-3	4.660	3.638	22587126	8685504	500.000	500.000

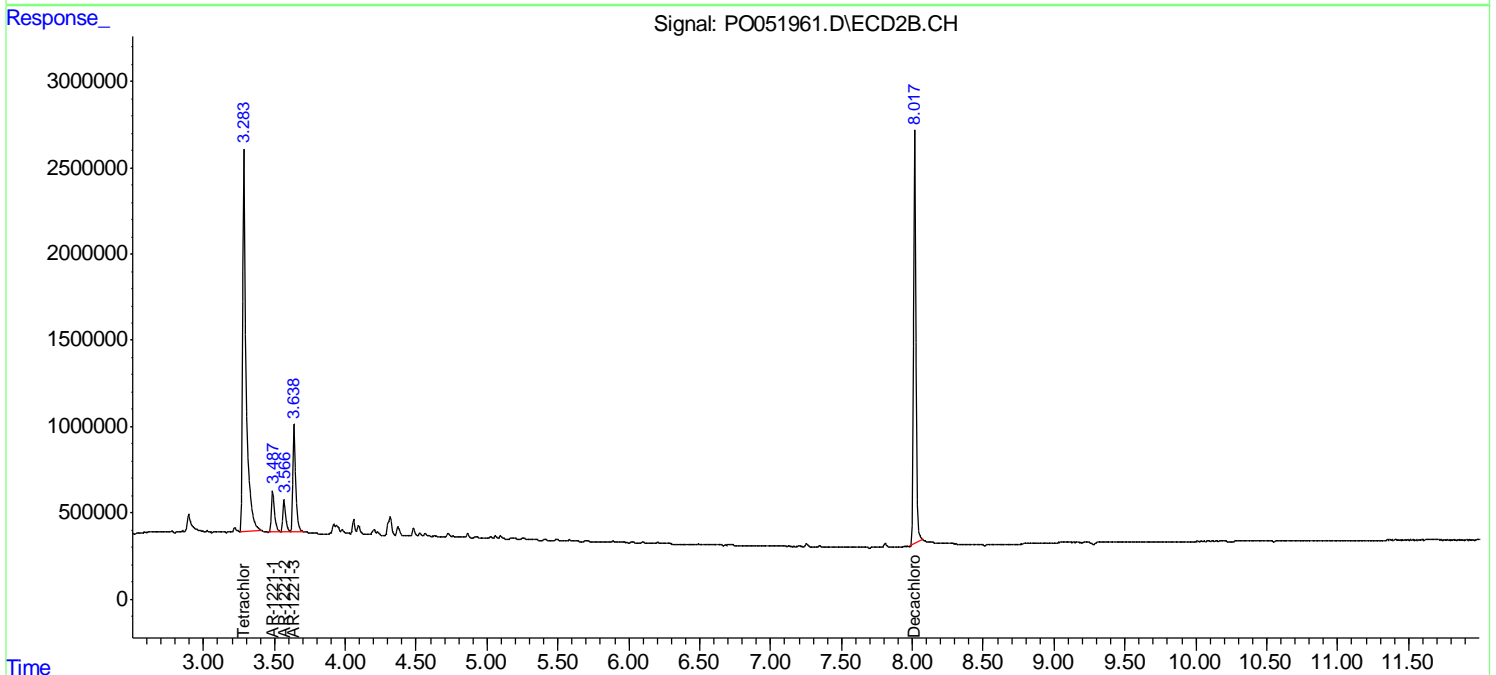
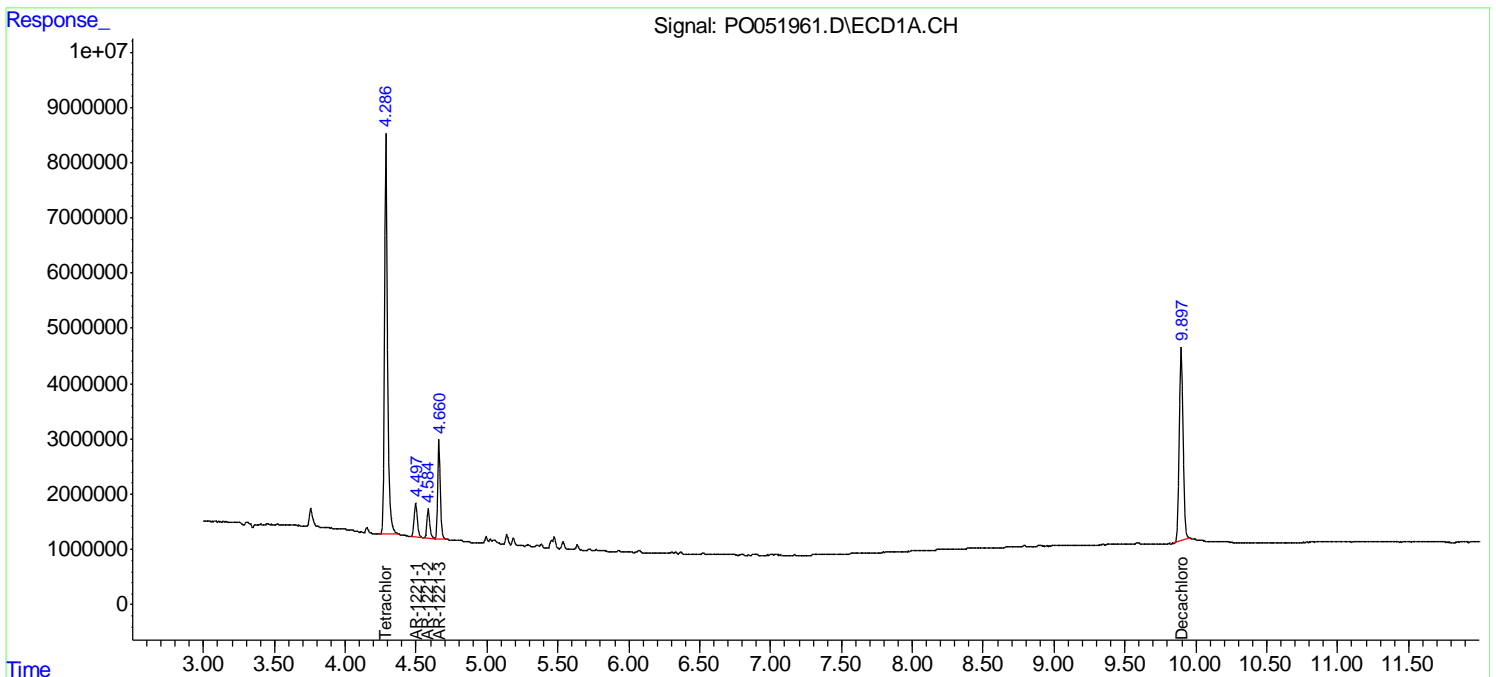
(f)=RT Delta > 1/2 Window (#)=Amounts differ by > 25% (m)=manual int.

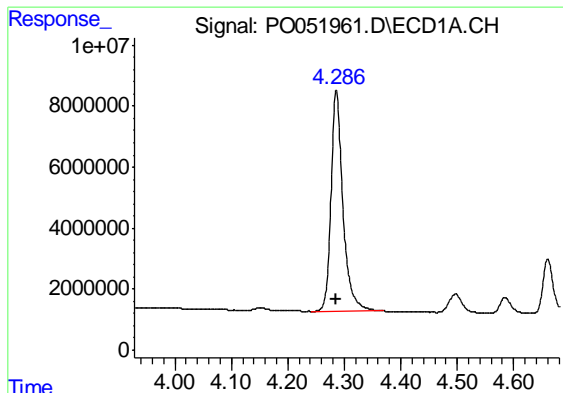
Data Path : Z:\pestpcbsrv\HPCHEM1\ECD_O\Data\PO112918\
 Data File : PO051961.D
 Signal(s) : Signal #1: ECD1A.CH Signal #2: ECD2B.CH
 Acq On : 29 Nov 2018 13:27
 Operator : SM/SJ
 Sample : AR1221ICC500
 Misc :
 ALS Vial : 8 Sample Multiplier: 1

Instrument :
 ECD_O
 ClientSampleId :
 AR1221ICC500

Integration File signal 1: autoint1.e
 Integration File signal 2: autoint2.e
 Quant Time: Nov 30 03:41:15 2018
 Quant Method : Z:\pestpcbsrv\HPCHEM1\ECD_O\methods\PO112918.M
 Quant Title : GC EXTRACTABLES
 QLast Update : Fri Nov 30 03:41:08 2018
 Response via : Initial Calibration
 Integrator: ChemStation 6890 Scale Mode: Small noise peaks clipped

Volume Inj. : 2 µl
 Signal #1 Phase : ZB-MR1 Signal #2 Phase: ZB-MR2
 Signal #1 Info : 30Mx0.32mmx 0.50µ Signal #2 Info : 30M x 0.32mm x 0.25µm

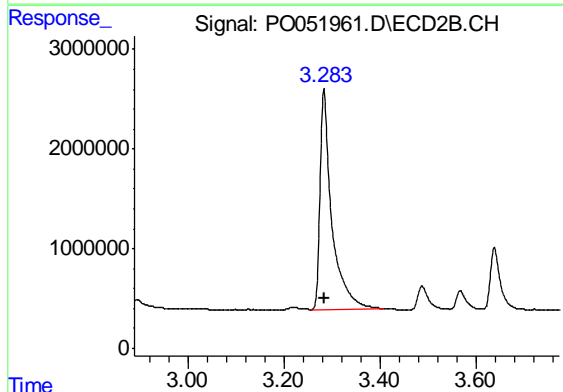




#1 Tetrachloro-m-xylene

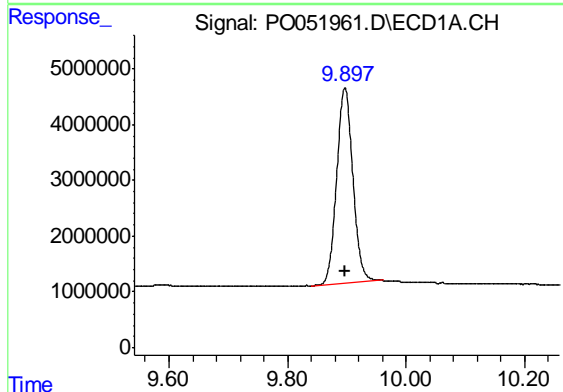
R.T.: 4.286 min
Delta R.T.: 0.000 min
Response: 106049651
Conc: 50.00 ng/ml

Instrument :
ECD_O
ClientSampleId :
AR1221ICC500



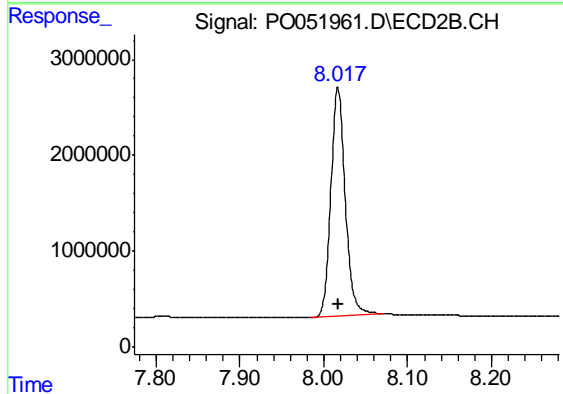
#1 Tetrachloro-m-xylene

R.T.: 3.284 min
Delta R.T.: 0.000 min
Response: 37516525
Conc: 50.00 ng/ml



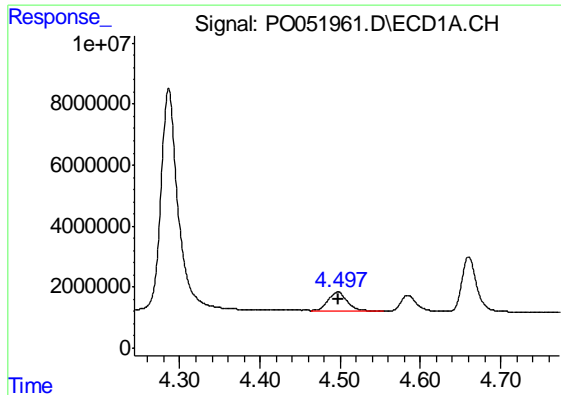
#2 Decachlorobiphenyl

R.T.: 9.897 min
Delta R.T.: 0.000 min
Response: 66306815
Conc: 50.00 ng/ml



#2 Decachlorobiphenyl

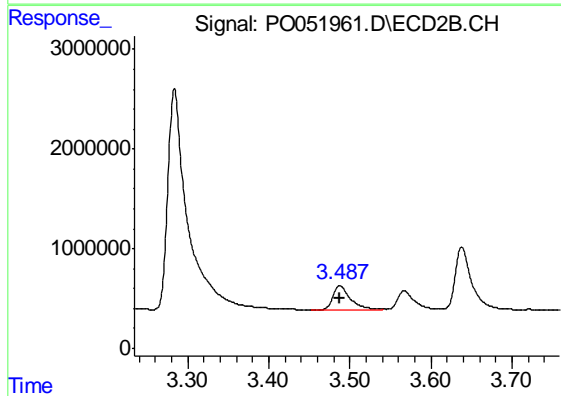
R.T.: 8.017 min
Delta R.T.: 0.000 min
Response: 28390272
Conc: 50.00 ng/ml



#8 AR-1221-1

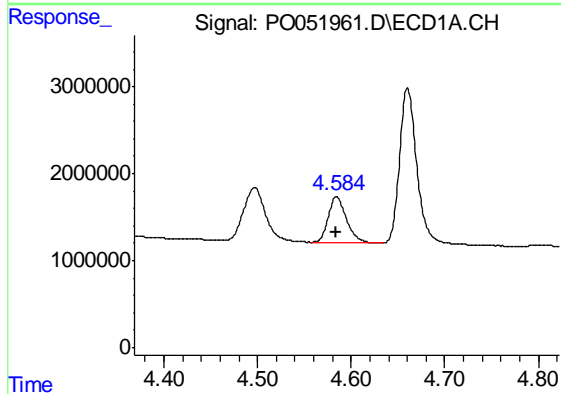
R.T.: 4.498 min
Delta R.T.: 0.000 min
Response: 9991355
Conc: 500.00 ng/ml

Instrument :
ECD_O
ClientSampleId :
AR1221ICC500



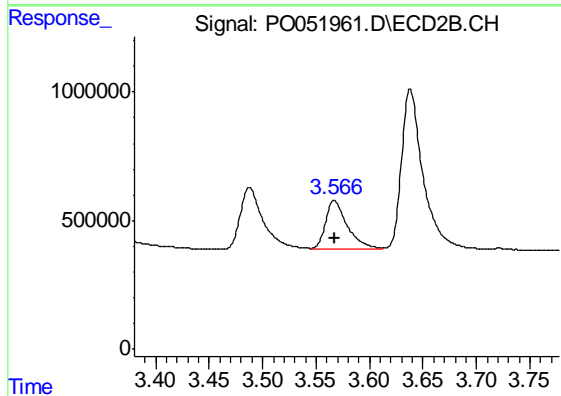
#8 AR-1221-1

R.T.: 3.488 min
Delta R.T.: 0.000 min
Response: 3585164
Conc: 500.00 ng/ml



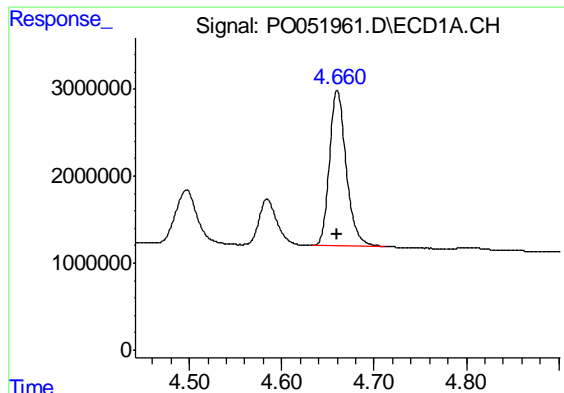
#9 AR-1221-2

R.T.: 4.584 min
Delta R.T.: 0.000 min
Response: 7139293
Conc: 500.00 ng/ml



#9 AR-1221-2

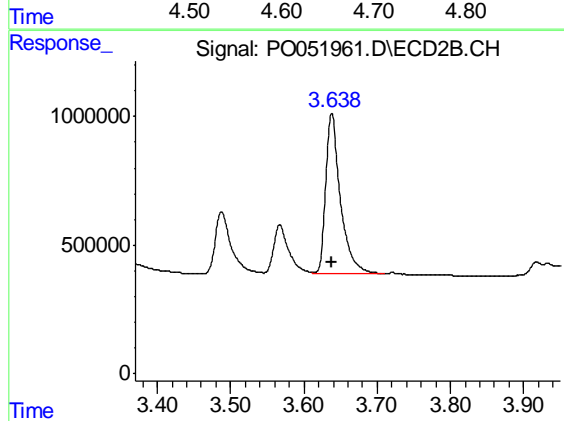
R.T.: 3.567 min
Delta R.T.: 0.000 min
Response: 2691199
Conc: 500.00 ng/ml



#10 AR-1221-3

R.T.: 4.660 min
Delta R.T.: 0.000 min
Response: 22587126
Conc: 500.00 ng/ml

Instrument :
ECD_O
ClientSampleId :
AR1221ICC500



#10 AR-1221-3

R.T.: 3.638 min
Delta R.T.: 0.000 min
Response: 8685504
Conc: 500.00 ng/ml