

Data Path : Z:\pestpcbsrv\HPCHEM1\ECD_0\Data\P0112918\
 Data File : P0051992.D
 Signal(s) : Signal #1: ECD1A.CH Signal #2: ECD2B.CH
 Acq On : 29 Nov 2018 22:33
 Operator : SM/SJ
 Sample : J6032-06MSD
 Misc :
 ALS Vial : 17 Sample Multiplier: 1

Instrument :
 ECD_0
 ClientSampleId :
 MMTW-01MSD

Manual Integrations
 APPROVED

mohammad
 11/30/2018 3:46:22 PM

Integration File signal 1: autoint1.e
 Integration File signal 2: autoint2.e
 Quant Time: Nov 30 05:05:27 2018
 Quant Method : Z:\pestpcbsrv\HPCHEM1\ECD_0\methods\P0112918.M
 Quant Title : GC EXTRACTABLES
 QLast Update : Fri Nov 30 03:43:16 2018
 Response via : Initial Calibration
 Integrator: ChemStation 6890 Scale Mode: Small noise peaks clipped

Volume Inj. : 2 µl
 Signal #1 Phase : ZB-MR1 Signal #2 Phase: ZB-MR2
 Signal #1 Info : 30Mx0.32mmx 0.50µ Signal #2 Info : 30M x 0.32mm x 0.25µm

Compound	RT#1	RT#2	Resp#1	Resp#2	ng/ml	ng/ml

System Monitoring Compounds						
1) SA Tetrachlo...	4.281	3.285	45214526	13876020	18.320	15.500
2) SA Decachlor...	9.884	8.011	32737189	13027274	20.112	19.009
Target Compounds						
3) L1 AR-1016-1	5.446	4.307	12567173	4827439	225.403	247.323m
4) L1 AR-1016-2	5.469	4.316	19223339	8018705	226.394	182.017m
5) L1 AR-1016-3	5.530	4.479	11208397	3723273	229.382	202.422
6) L1 AR-1016-4	5.629	4.524	8709407	2906511	218.511	195.079
7) L1 AR-1016-5	5.920	4.722	9581352	3271760	263.219	181.168 #
31) L7 AR-1260-1	7.038	5.699	15847907	7019081	224.949	200.133
32) L7 AR-1260-2	7.293	5.883	19750046	8014884	212.277	184.327
33) L7 AR-1260-3	7.649	6.026	13819132	7928117	211.069	197.214
34) L7 AR-1260-4	7.875	6.480	14532068	5710694	207.605	206.389
35) L7 AR-1260-5	8.185	6.720	34025802	15053015	206.710	208.773

(f)=RT Delta > 1/2 Window (#)=Amounts differ by > 25% (m)=manual int.

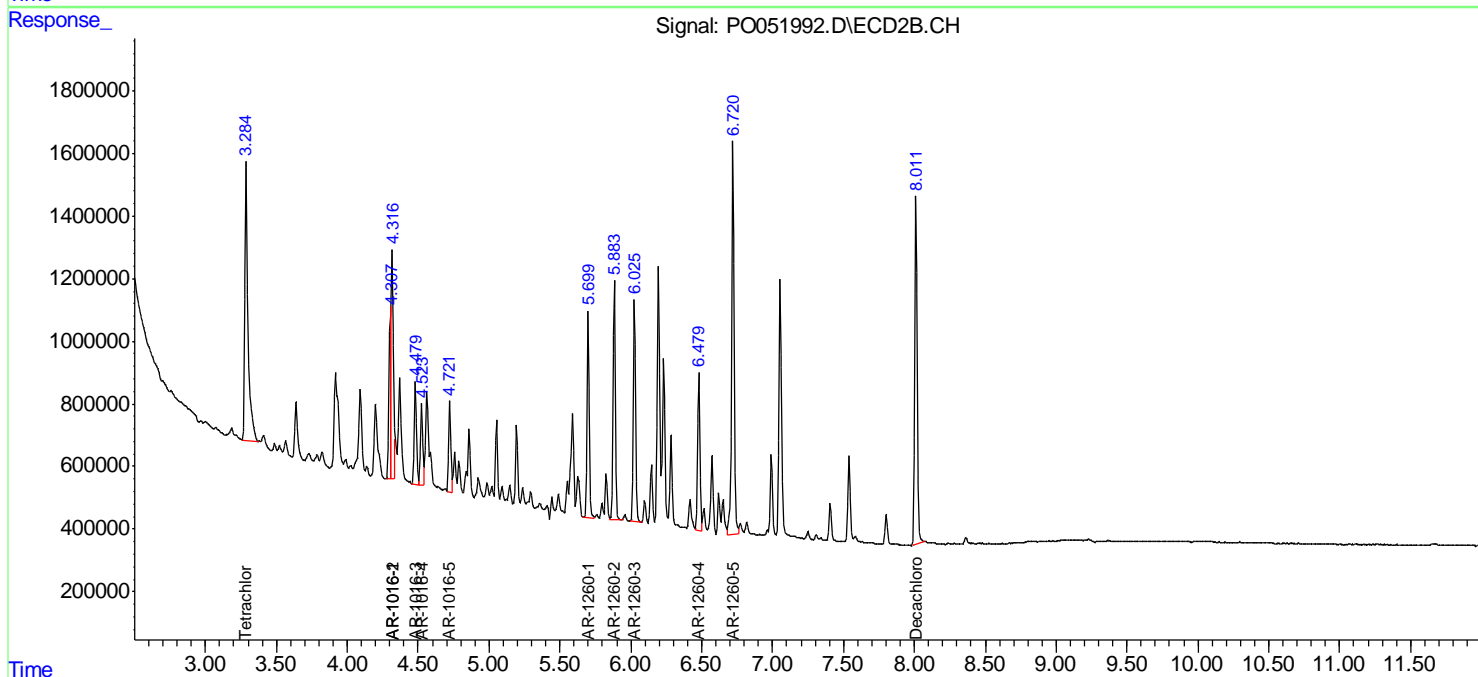
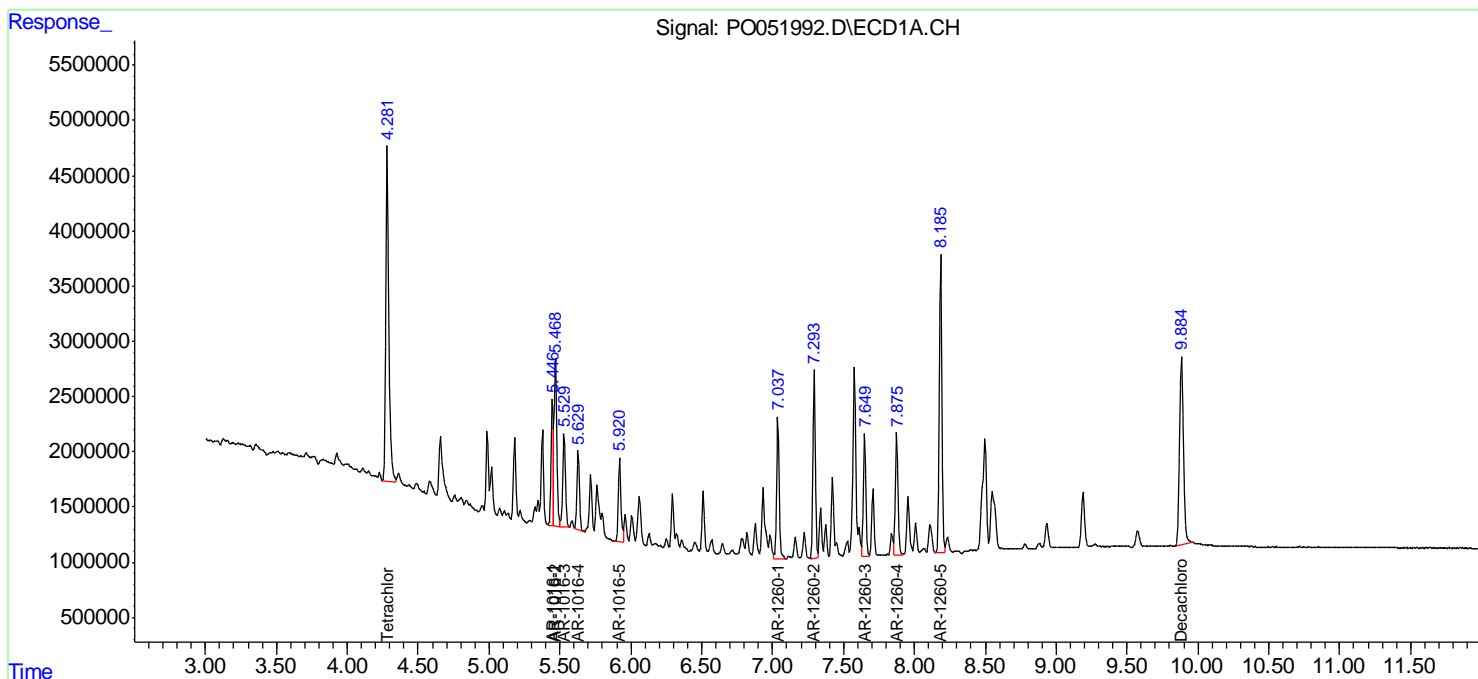
Data Path : Z:\pestpcbsrv\HPCHEM1\ECD_O\Data\PO112918\
 Data File : PO051992.D
 Signal(s) : Signal #1: ECD1A.CH Signal #2: ECD2B.CH
 Acq On : 29 Nov 2018 22:33
 Operator : SM/SJ
 Sample : J6032-06MSD
 Misc :
 ALS Vial : 17 Sample Multiplier: 1

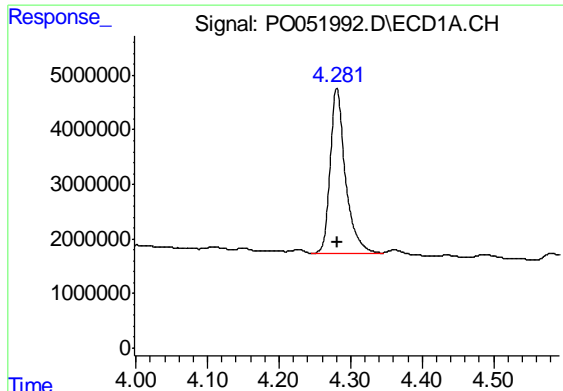
Instrument :
 ECD_O
 Client Sampled :
 MMTW-01MSD

Manual Integrations
APPROVED
 mohammad
 11/30/2018 3:46:22 PM

Integration File signal 1: autoint1.e
 Integration File signal 2: autoint2.e
 Quant Time: Nov 30 05:05:27 2018
 Quant Method : Z:\pestpcbsrv\HPCHEM1\ECD_O\methods\PO112918.M
 Quant Title : GC EXTRACTABLES
 QLast Update : Fri Nov 30 03:43:16 2018
 Response via : Initial Calibration
 Integrator: ChemStation 6890 Scale Mode: Small noise peaks clipped

Volume Inj. : 2 µl
 Signal #1 Phase : ZB-MR1 Signal #2 Phase: ZB-MR2
 Signal #1 Info : 30Mx0.32mmx 0.50µ Signal #2 Info : 30M x 0.32mm x 0.25µm





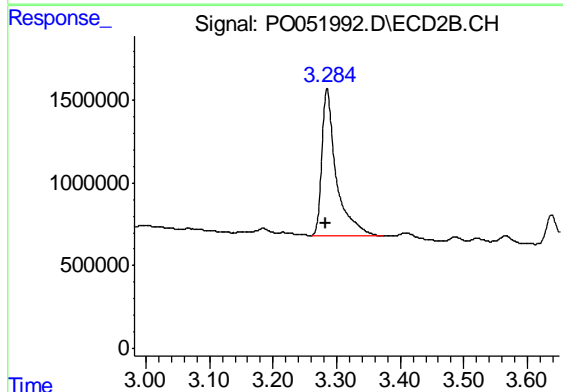
#1 Tetrachloro-m-xylene

R.T.: 4.281 min
 Delta R.T.: -0.001 min
 Response: 45214526
 Conc: 18.32 ng/ml

Instrument :
 ECD_O
 ClientSampleId :
 MMTW-01MSD

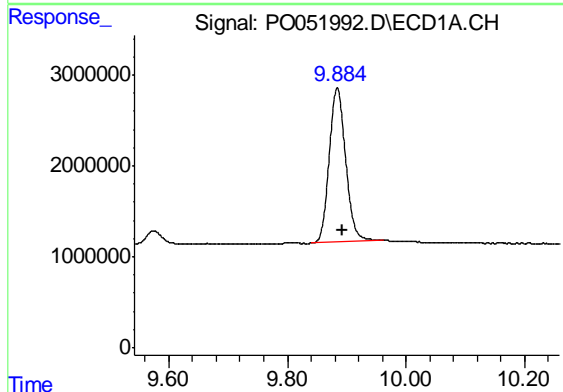
Manual Integrations
 APPROVED

mohammad
 11/30/2018 3:46:22 PM



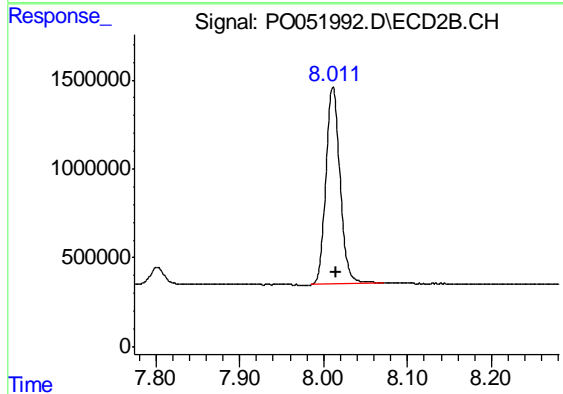
#1 Tetrachloro-m-xylene

R.T.: 3.285 min
 Delta R.T.: 0.002 min
 Response: 13876020
 Conc: 15.50 ng/ml



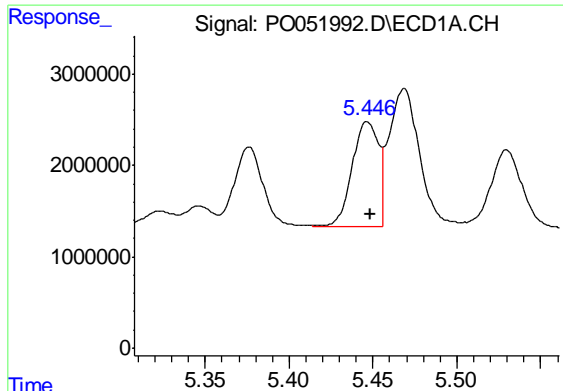
#2 Decachlorobiphenyl

R.T.: 9.884 min
 Delta R.T.: -0.008 min
 Response: 32737189
 Conc: 20.11 ng/ml



#2 Decachlorobiphenyl

R.T.: 8.011 min
 Delta R.T.: -0.004 min
 Response: 13027274
 Conc: 19.01 ng/ml



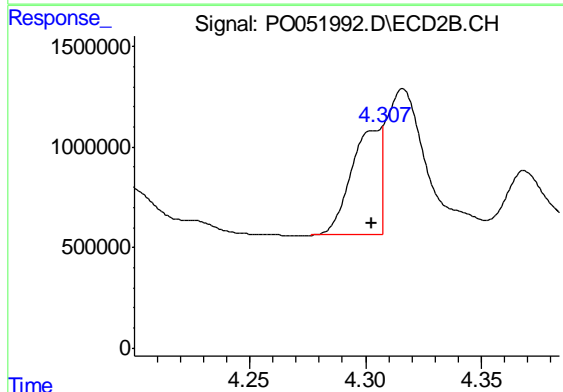
#3 AR-1016-1

R.T.: 5.446 min
 Delta R.T.: -0.002 min
 Response: 12567173
 Conc: 225.40 ng/ml

Instrument :
 ECD_O
 ClientSampleId :
 MMTW-01MSD

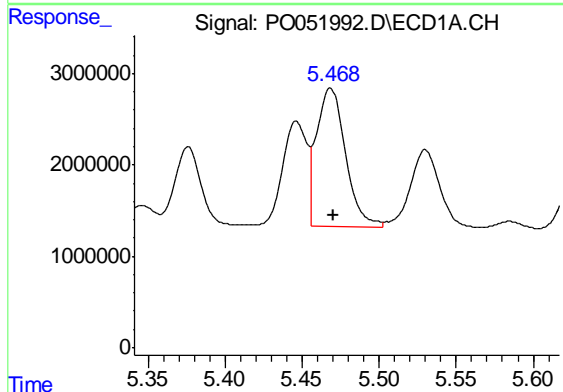
Manual Integrations
 APPROVED

mohammad
 11/30/2018 3:46:22 PM



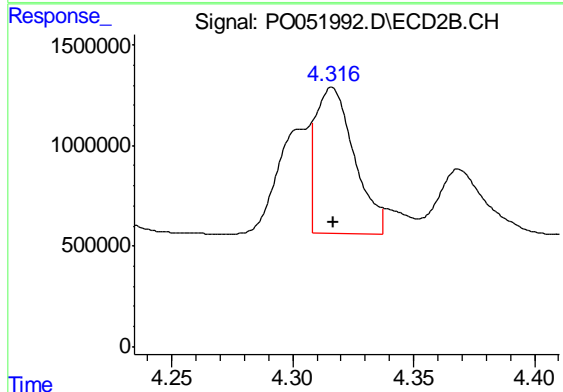
#3 AR-1016-1

R.T.: 4.307 min
 Delta R.T.: 0.004 min
 Response: 4827439
 Conc: 247.32 ng/ml m



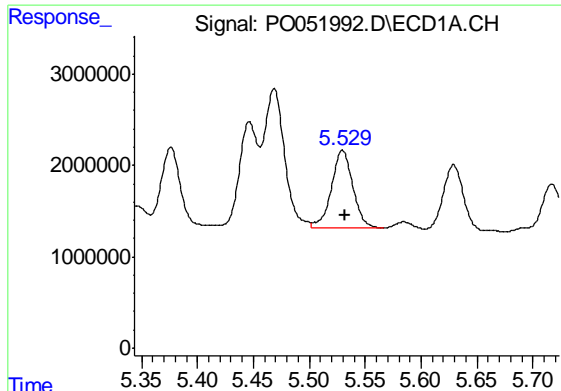
#4 AR-1016-2

R.T.: 5.469 min
 Delta R.T.: -0.002 min
 Response: 19223339
 Conc: 226.39 ng/ml



#4 AR-1016-2

R.T.: 4.316 min
 Delta R.T.: 0.000 min
 Response: 8018705
 Conc: 182.02 ng/ml m



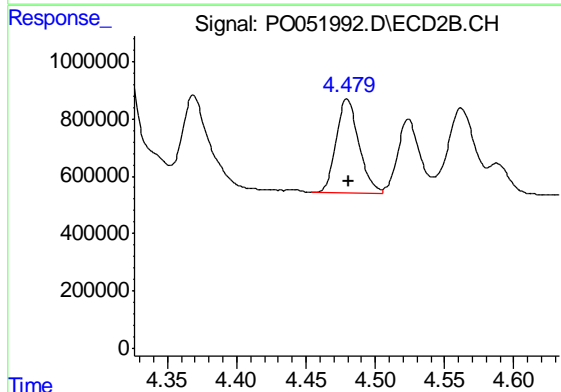
#5 AR-1016-3

R.T.: 5.530 min
 Delta R.T.: -0.002 min
 Response: 11208397
 Conc: 229.38 ng/ml

Instrument :
 ECD_O
 ClientSampleId :
 MMTW-01MSD

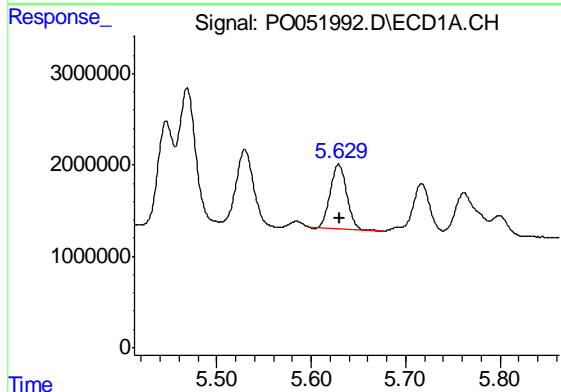
Manual Integrations
 APPROVED

mohammad
 11/30/2018 3:46:22 PM



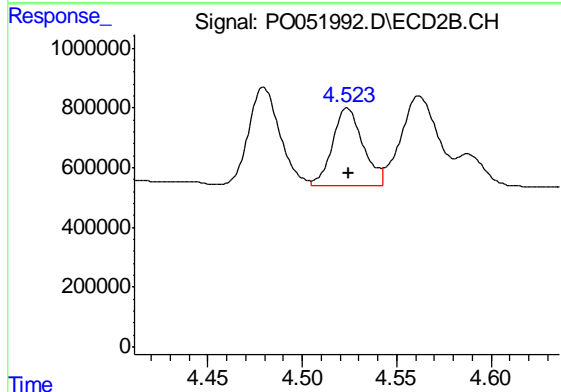
#5 AR-1016-3

R.T.: 4.479 min
 Delta R.T.: -0.002 min
 Response: 3723273
 Conc: 202.42 ng/ml



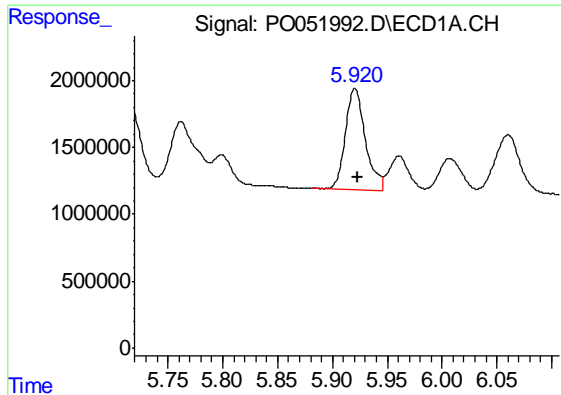
#6 AR-1016-4

R.T.: 5.629 min
 Delta R.T.: -0.002 min
 Response: 8709407
 Conc: 218.51 ng/ml



#6 AR-1016-4

R.T.: 4.524 min
 Delta R.T.: 0.000 min
 Response: 2906511
 Conc: 195.08 ng/ml



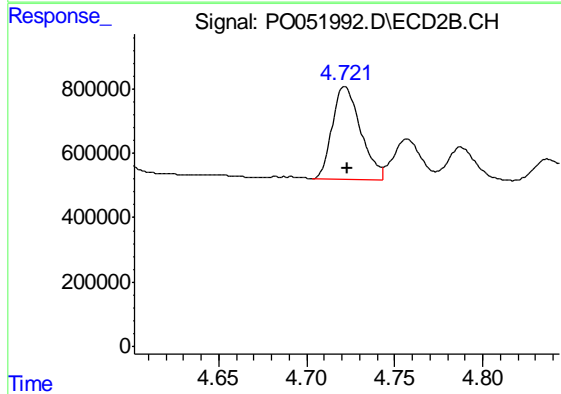
#7 AR-1016-5

R.T.: 5.920 min
 Delta R.T.: -0.002 min
 Response: 9581352
 Conc: 263.22 ng/ml

Instrument :
 ECD_O
 ClientSampleId :
 MMTW-01MSD

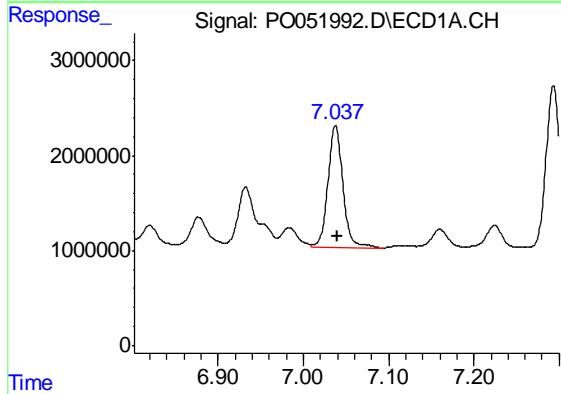
Manual Integrations
 APPROVED

mohammad
 11/30/2018 3:46:22 PM



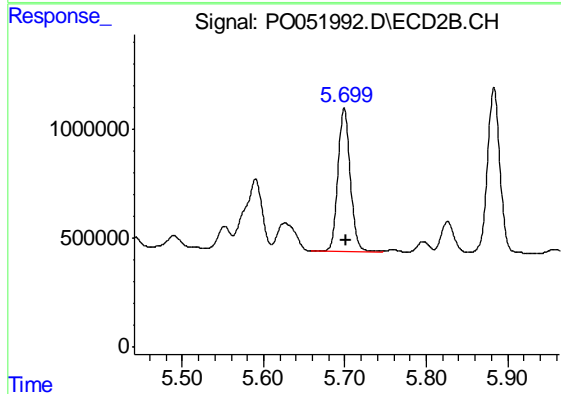
#7 AR-1016-5

R.T.: 4.722 min
 Delta R.T.: -0.001 min
 Response: 3271760
 Conc: 181.17 ng/ml



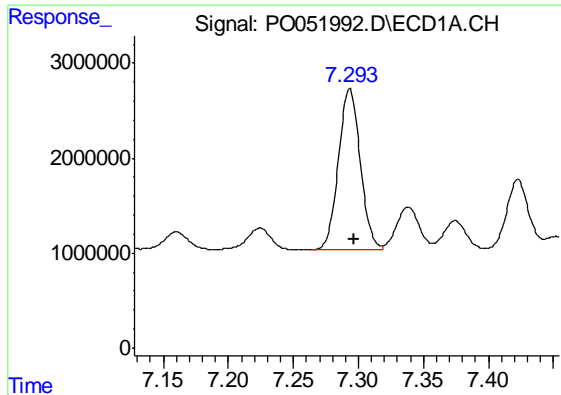
#31 AR-1260-1

R.T.: 7.038 min
 Delta R.T.: -0.003 min
 Response: 15847907
 Conc: 224.95 ng/ml



#31 AR-1260-1

R.T.: 5.699 min
 Delta R.T.: -0.003 min
 Response: 7019081
 Conc: 200.13 ng/ml



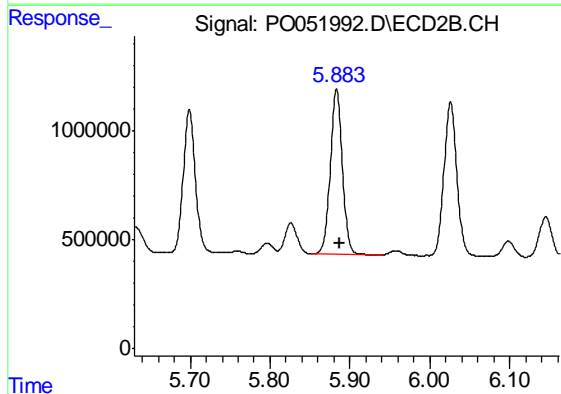
#32 AR-1260-2

R.T.: 7.293 min
 Delta R.T.: -0.003 min
 Response: 19750046
 Conc: 212.28 ng/ml

Instrument :
 ECD_O
 ClientSampleId :
 MMTW-01MSD

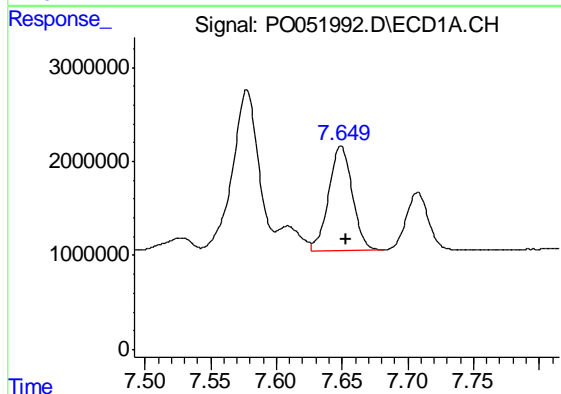
Manual Integrations
 APPROVED

mohammad
 11/30/2018 3:46:22 PM



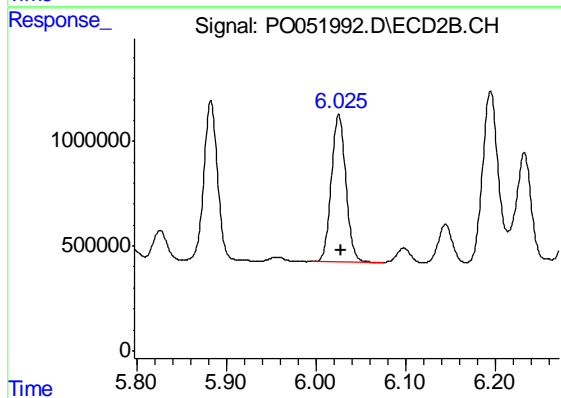
#32 AR-1260-2

R.T.: 5.883 min
 Delta R.T.: -0.003 min
 Response: 8014884
 Conc: 184.33 ng/ml



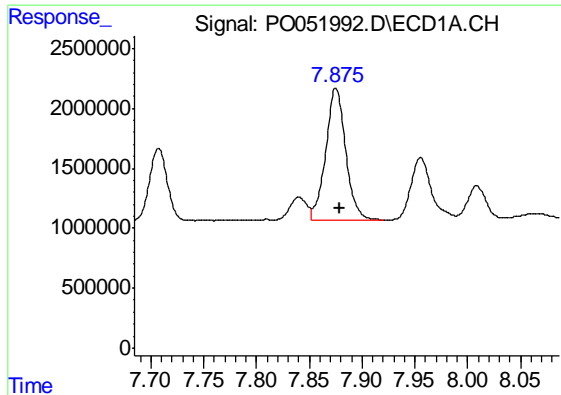
#33 AR-1260-3

R.T.: 7.649 min
 Delta R.T.: -0.004 min
 Response: 13819132
 Conc: 211.07 ng/ml



#33 AR-1260-3

R.T.: 6.026 min
 Delta R.T.: -0.003 min
 Response: 7928117
 Conc: 197.21 ng/ml



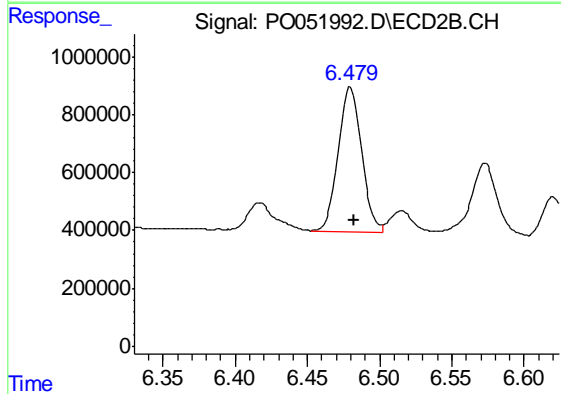
#34 AR-1260-4

R.T.: 7.875 min
 Delta R.T.: -0.004 min
 Response: 14532068
 Conc: 207.60 ng/ml

Instrument :
 ECD_O
 ClientSampleId :
 MMTW-01MSD

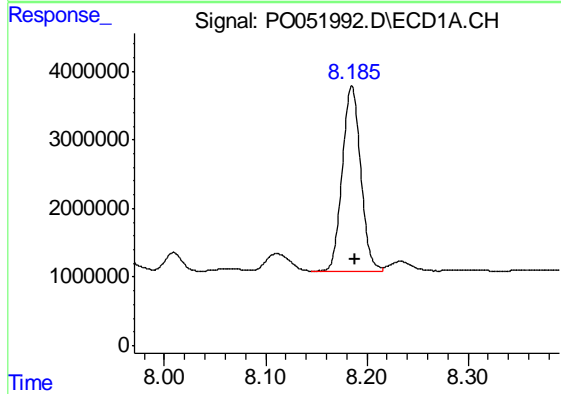
Manual Integrations
 APPROVED

mohammad
 11/30/2018 3:46:22 PM



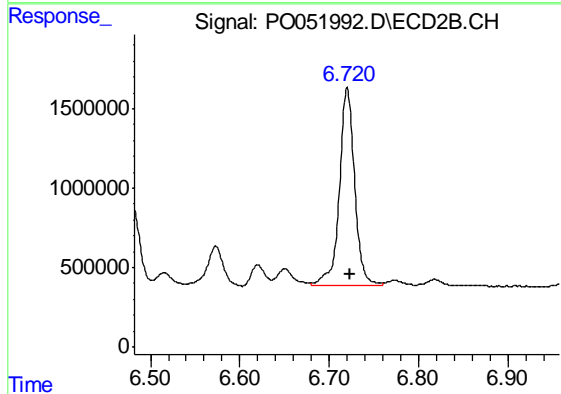
#34 AR-1260-4

R.T.: 6.480 min
 Delta R.T.: -0.003 min
 Response: 5710694
 Conc: 206.39 ng/ml



#35 AR-1260-5

R.T.: 8.185 min
 Delta R.T.: -0.004 min
 Response: 34025802
 Conc: 206.71 ng/ml



#35 AR-1260-5

R.T.: 6.720 min
 Delta R.T.: -0.003 min
 Response: 15053015
 Conc: 208.77 ng/ml