

Data Path : Z:\pestpcbsrv\HPCHEM1\ECD_0\Data\PO120118\
 Data File : P0052109.D
 Signal(s) : Signal #1: ECD1A.CH Signal #2: ECD2B.CH
 Acq On : 01 Dec 2018 13:41
 Operator : SM/SJ
 Sample : AR1254ICC500
 Misc :
 ALS Vial : 12 Sample Multiplier: 1

Instrument :
 ECD_0
 ClientSampleId :
 AR1254ICC500

Integration File signal 1: autoint1.e
 Integration File signal 2: autoint2.e
 Quant Time: Dec 03 06:23:43 2018
 Quant Method : Z:\pestpcbsrv\HPCHEM1\ECD_0\methods\PO120118.M
 Quant Title : GC EXTRACTABLES
 QLast Update : Mon Dec 03 06:23:19 2018
 Response via : Initial Calibration
 Integrator: ChemStation 6890 Scale Mode: Small noise peaks clipped

Volume Inj. : 2 µl
 Signal #1 Phase : ZB-MR1 Signal #2 Phase: ZB-MR2
 Signal #1 Info : 30Mx0.32mmx 0.50µ Signal #2 Info : 30M x 0.32mm x 0.25µm

Compound	RT#1	RT#2	Resp#1	Resp#2	ng/ml	ng/ml
----------	------	------	--------	--------	-------	-------

 System Monitoring Compounds

1) SA Tetrachlo...	4.281	3.291	54535480	20086660	48.534	47.485
2) SA Decachlor...	9.869	8.002	41029925	17724230	44.606	45.567

Target Compounds

26) L6 AR-1254-1	6.287	5.049	16729677	11294375	500.000	500.000
27) L6 AR-1254-2	6.504	5.190	26351151	9827525	500.000	500.000
28) L6 AR-1254-3	6.869	5.570	28170868	15414610	500.000	500.000
29) L6 AR-1254-4	7.153	5.792	20870379	9299540	500.000	500.000
30) L6 AR-1254-5	7.569	6.190	22092672	13218155	500.000	500.000

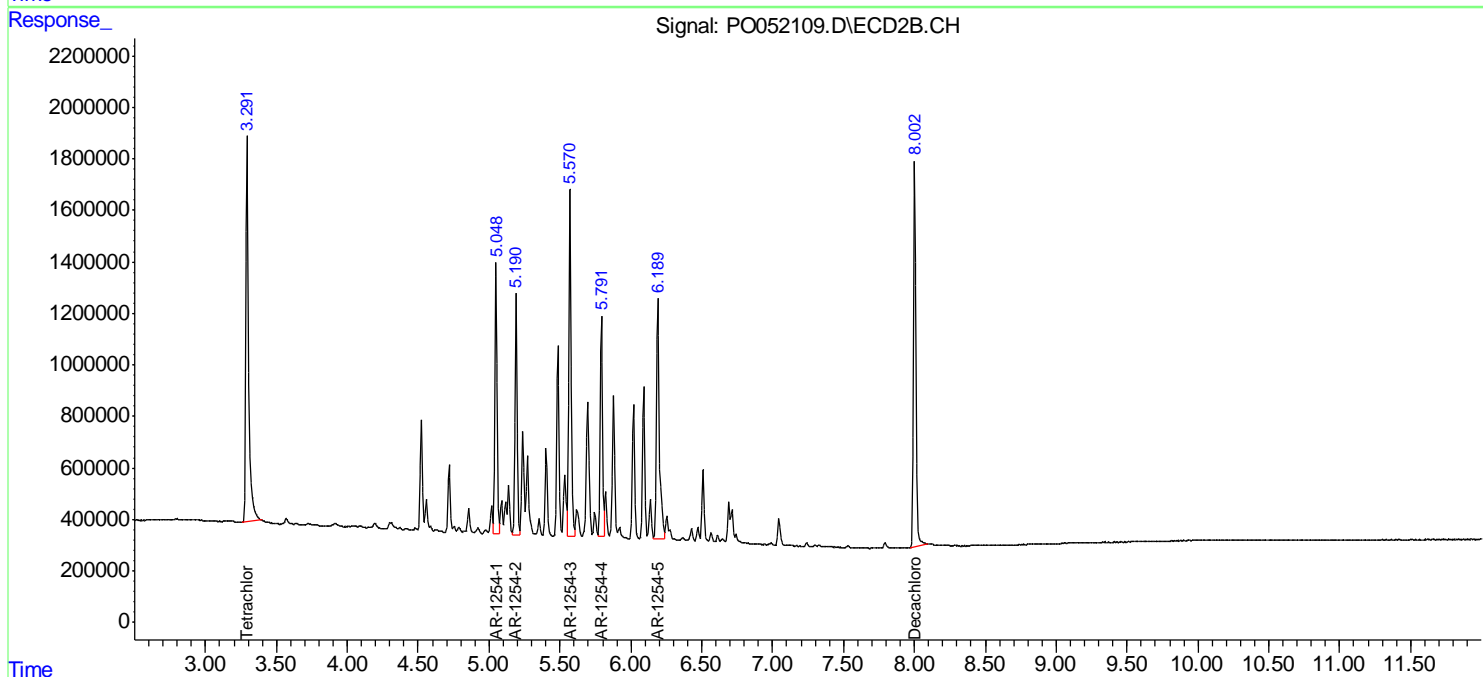
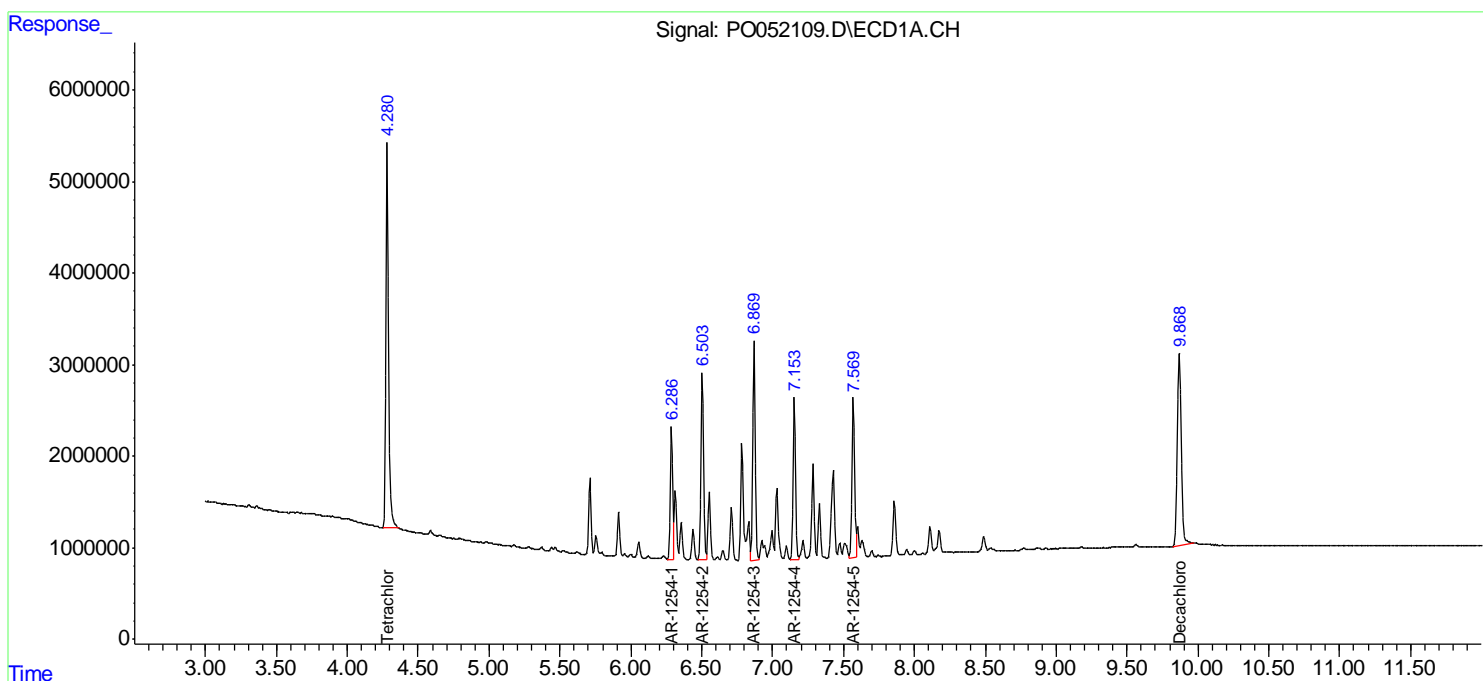
(f)=RT Delta > 1/2 Window (#)=Amounts differ by > 25% (m)=manual int.

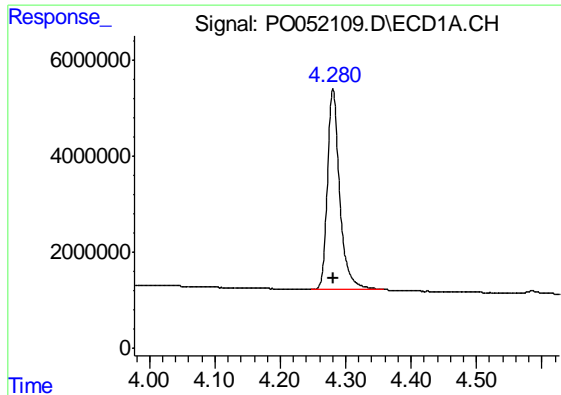
Data Path : Z:\pestpcbsrv\HPCHEM1\ECD_O\Data\PO120118\
 Data File : PO052109.D
 Signal(s) : Signal #1: ECD1A.CH Signal #2: ECD2B.CH
 Acq On : 01 Dec 2018 13:41
 Operator : SM/SJ
 Sample : AR1254ICC500
 Misc :
 ALS Vial : 12 Sample Multiplier: 1

Instrument :
 ECD_O
 ClientSampleId :
 AR1254ICC500

Integration File signal 1: autoint1.e
 Integration File signal 2: autoint2.e
 Quant Time: Dec 03 06:23:43 2018
 Quant Method : Z:\pestpcbsrv\HPCHEM1\ECD_O\methods\PO120118.M
 Quant Title : GC EXTRACTABLES
 QLast Update : Mon Dec 03 06:23:19 2018
 Response via : Initial Calibration
 Integrator: ChemStation 6890 Scale Mode: Small noise peaks clipped

Volume Inj. : 2 µl
 Signal #1 Phase : ZB-MR1 Signal #2 Phase: ZB-MR2
 Signal #1 Info : 30Mx0.32mmx 0.50µ Signal #2 Info : 30M x 0.32mm x 0.25µm

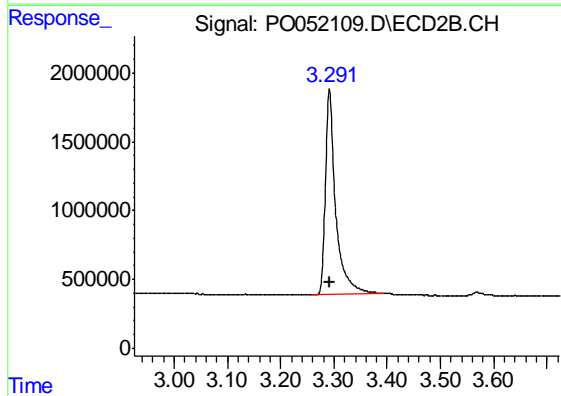




#1 Tetrachloro-m-xylene

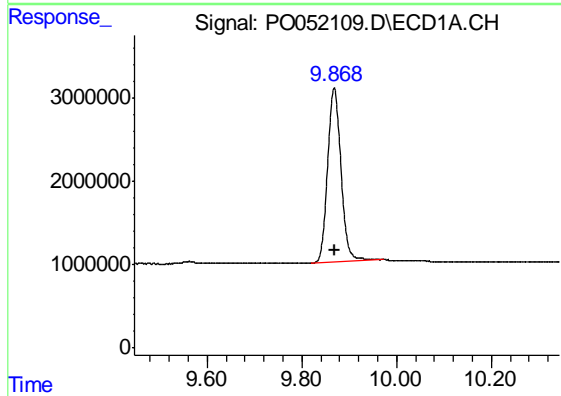
R.T.: 4.281 min
 Delta R.T.: 0.000 min
 Response: 54535480
 Conc: 48.53 ng/ml

Instrument :
 ECD_O
 ClientSampleId :
 AR1254ICC500



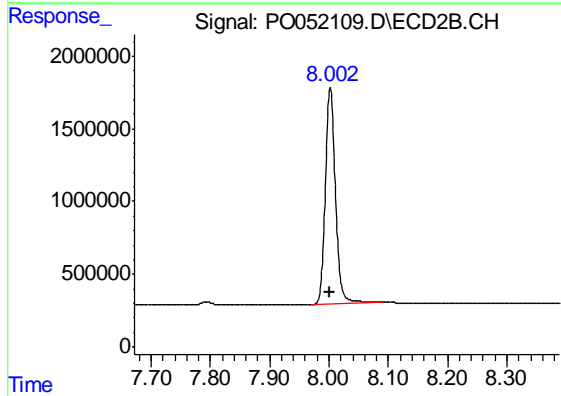
#1 Tetrachloro-m-xylene

R.T.: 3.291 min
 Delta R.T.: 0.000 min
 Response: 20086660
 Conc: 47.48 ng/ml



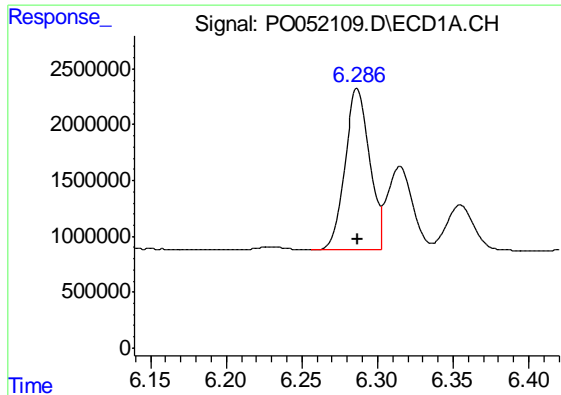
#2 Decachlorobiphenyl

R.T.: 9.869 min
 Delta R.T.: 0.000 min
 Response: 41029925
 Conc: 44.61 ng/ml



#2 Decachlorobiphenyl

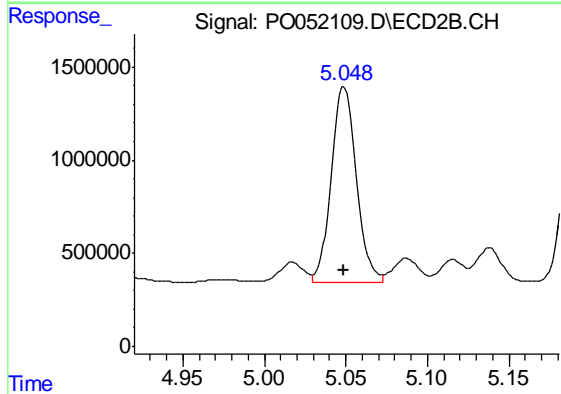
R.T.: 8.002 min
 Delta R.T.: 0.000 min
 Response: 17724230
 Conc: 45.57 ng/ml



#26 AR-1254-1

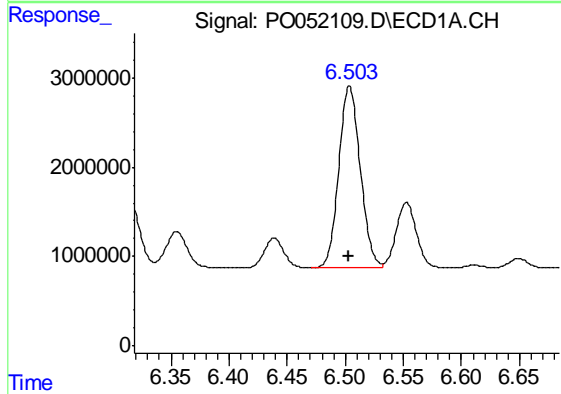
R.T.: 6.287 min
 Delta R.T.: 0.000 min
 Response: 16729677
 Conc: 500.00 ng/ml

Instrument :
 ECD_O
 ClientSampleId :
 AR1254ICC500



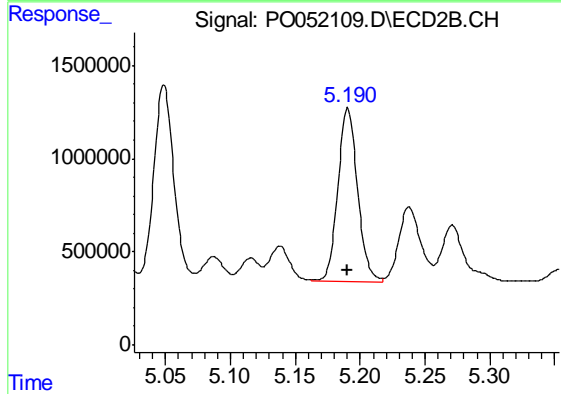
#26 AR-1254-1

R.T.: 5.049 min
 Delta R.T.: 0.000 min
 Response: 11294375
 Conc: 500.00 ng/ml



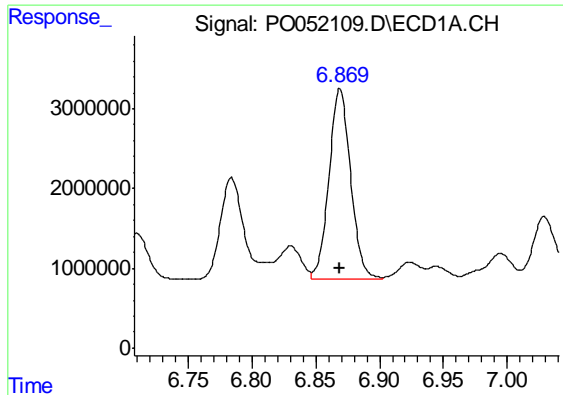
#27 AR-1254-2

R.T.: 6.504 min
 Delta R.T.: 0.000 min
 Response: 26351151
 Conc: 500.00 ng/ml



#27 AR-1254-2

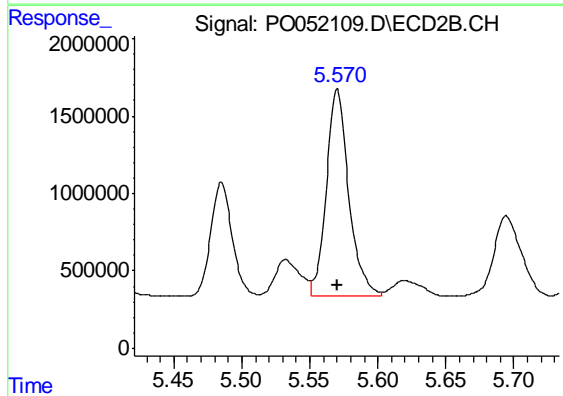
R.T.: 5.190 min
 Delta R.T.: 0.000 min
 Response: 9827525
 Conc: 500.00 ng/ml



#28 AR-1254-3

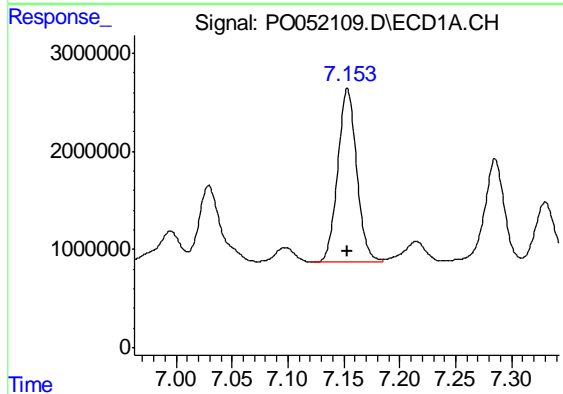
R.T.: 6.869 min
 Delta R.T.: 0.000 min
 Response: 28170868
 Conc: 500.00 ng/ml

Instrument :
 ECD_O
 ClientSampled :
 AR1254ICC500



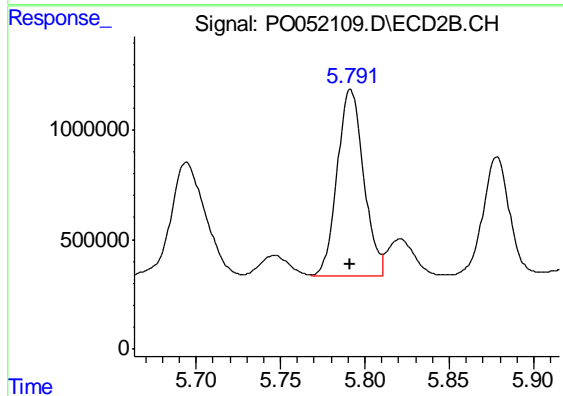
#28 AR-1254-3

R.T.: 5.570 min
 Delta R.T.: 0.000 min
 Response: 15414610
 Conc: 500.00 ng/ml



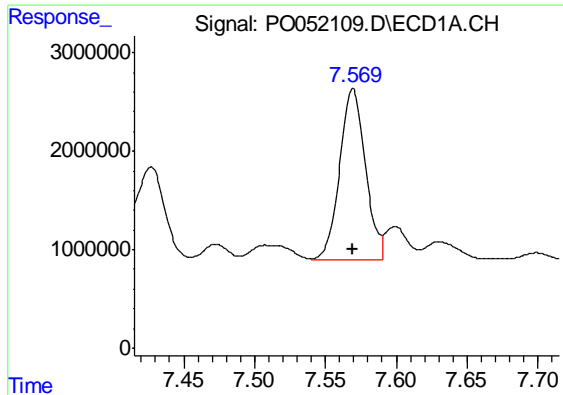
#29 AR-1254-4

R.T.: 7.153 min
 Delta R.T.: 0.000 min
 Response: 20870379
 Conc: 500.00 ng/ml



#29 AR-1254-4

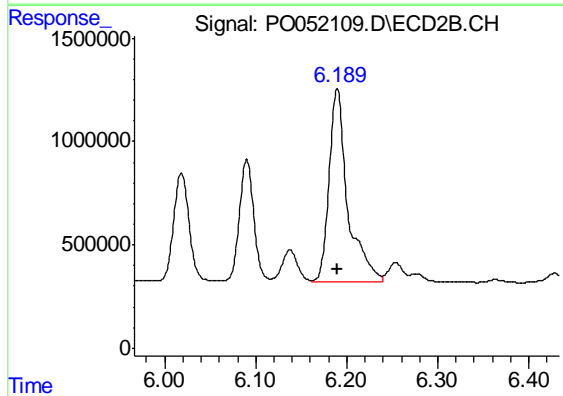
R.T.: 5.792 min
 Delta R.T.: 0.000 min
 Response: 9299540
 Conc: 500.00 ng/ml



#30 AR-1254-5

R.T.: 7.569 min
Delta R.T.: 0.000 min
Response: 22092672
Conc: 500.00 ng/ml

Instrument :
ECD_O
ClientSampleId :
AR1254ICC500



#30 AR-1254-5

R.T.: 6.190 min
Delta R.T.: 0.000 min
Response: 13218155
Conc: 500.00 ng/ml