

Data Path : Z:\pestpcbsrv\HPCHEM1\ECD_L\Data\PL120318\
 Data File : PL042745.D
 Signal(s) : Signal #1: ECD1A.ch Signal #2: ECD2B.ch
 Acq On : 04 Dec 2018 05:02
 Operator : AJ\SJ
 Sample : PEM
 Misc :
 ALS Vial : 3 Sample Multiplier: 1

Instrument :
 ECD_O
 ClientSampled :

Integration File signal 1: autoint1.e
 Integration File signal 2: autoint2.e
 Quant Time: Dec 04 05:49:48 2018
 Quant Method : Z:\pestpcbsrv\HPCHEM1\ECD_L\methods\PL112018.M
 Quant Title : GC Extractables
 QLast Update : Tue Nov 20 02:29:59 2018
 Response via : Initial Calibration
 Integrator: ChemStation

Volume Inj. : 2 µl
 Signal #1 Phase : ZB-MR2 Signal #2 Phase: ZB-MR2
 Signal #1 Info : 30M x 0.32mm x0.5 Signal #2 Info : 30M x 0.32mm x0.25µm

	Compound	RT#1	RT#2	Resp#1	Resp#2	ng/ml	ng/ml

System Monitoring Compounds							
1)	SA Tetrachlo...	3.467	4.102	112.6E6	59654465	19.145	20.741
28)	SA Decachlor...	8.205	9.235	122.6E6	51089865	19.458	21.183
Target Compounds							
2)	A alpha-BHC	3.907	4.498	80044367	43653849	8.871	10.194
3)	MA gamma-BHC...	4.190	4.786	73435031	41867114	8.910	10.595
4)	MA Heptachlor	4.444f	0.000	34717894	0	3.990	N.D. #
6)	B beta-BHC	4.444	4.956	34717894	15626687	9.800	9.905
8)	B Heptachlo...	5.119f	5.992	804261	5587758	0.106	1.558 #
10)	B gamma-Chl...	5.400	0.000	4412987	0	0.579	N.D. #
11)	B alpha-Chl...	5.400f	0.000	4412987	0	0.588	N.D. #
12)	B 4,4'-DDE	5.623	0.000	4629782	0	0.707	N.D. #
13)	MA Dieldrin	0.000	6.626	0	3100748	N.D.	0.932 #
14)	MA Endrin	6.011	6.838	323.2E6	141.0E6	49.411	51.191
15)	B Endosulfa...	6.286	7.048	5502619	4071889	0.880	1.474 #
16)	A 4,4'-DDD	6.140	6.954	13566482	8301272	2.562	3.154
17)	MA 4,4'-DDT	6.379	7.255	549.3E6	262.1E6	98.665	99.258
18)	B Endrin al...	6.454	7.170	5509507	2461135	1.060	1.074
20)	A Methoxychlor	6.925	7.711	689.2E6	309.1E6	218.542	226.731
21)	B Endrin ke...	7.157	7.868	14253380	8720573	2.058	3.155 #
23)	Chlordane-1	4.401	0.000	2923753	0	10.575	N.D. #
25)	Chlordane-3	5.400	0.000	4412987	0	5.034	N.D. #
26)	Chlordane-4	5.400	0.000	4412987	0	5.815	N.D. #
27)	Chlordane-5	6.286	7.170	5502619	2461135	18.467	25.585 #

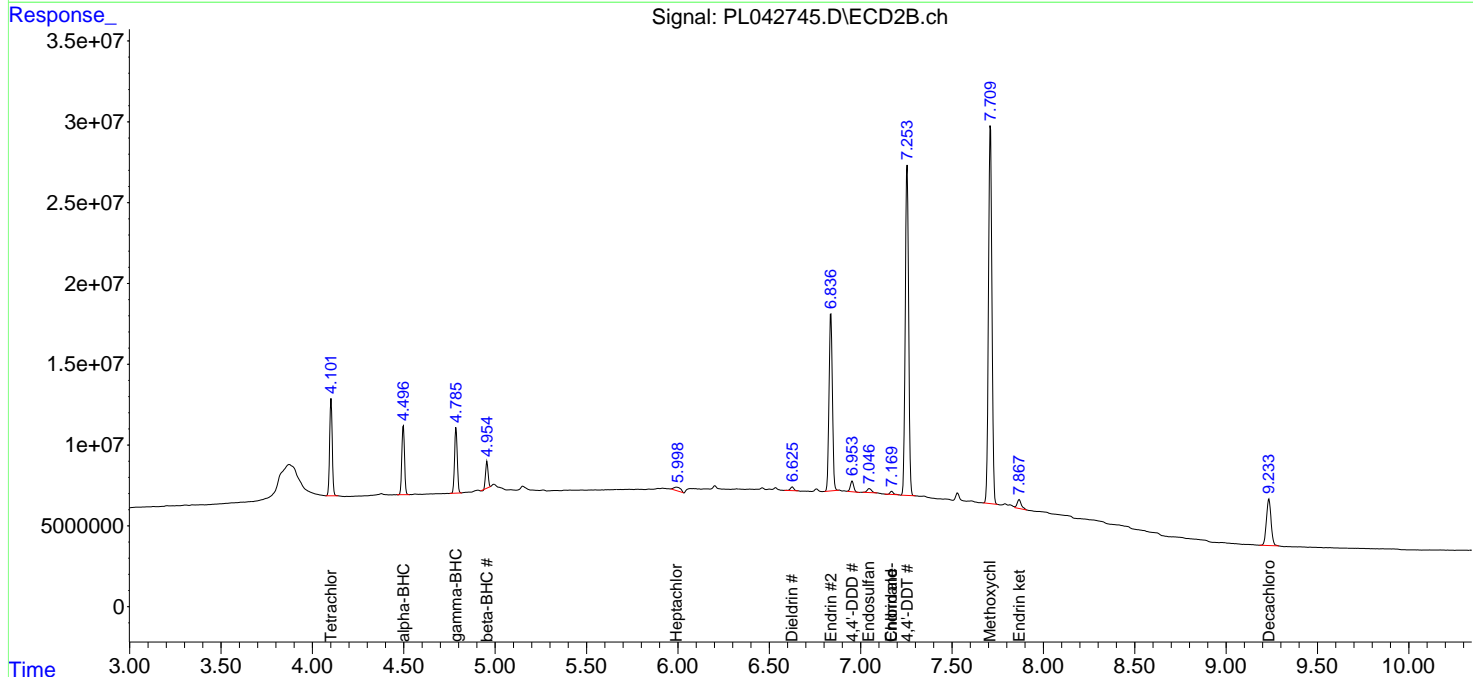
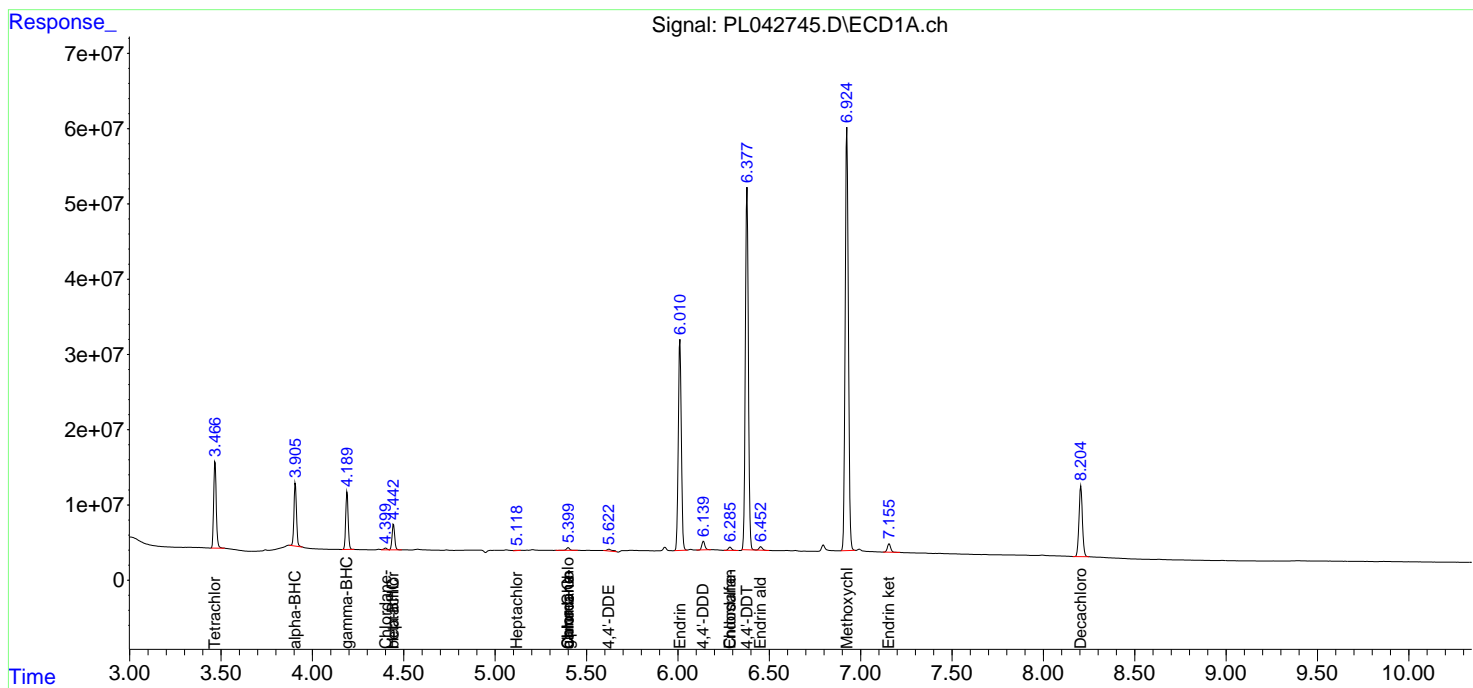
(f)=RT Delta > 1/2 Window (#)=Amounts differ by > 25% (m)=manual int.

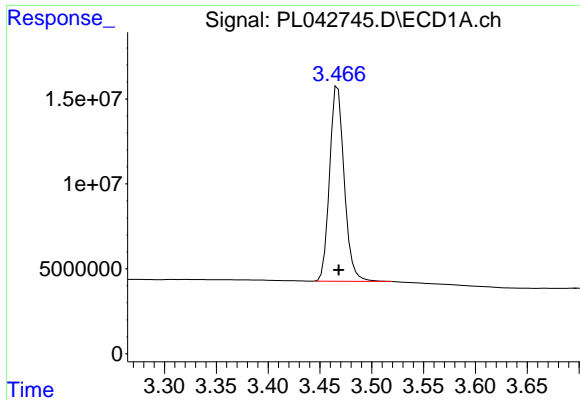
Data Path : Z:\pestpcbsrv\HPCHEM1\ECD_L\Data\PL120318\
 Data File : PL042745.D
 Signal(s) : Signal #1: ECD1A.ch Signal #2: ECD2B.ch
 Acq On : 04 Dec 2018 05:02
 Operator : AJ\SJ
 Sample : PEM
 Misc :
 ALS Vial : 3 Sample Multiplier: 1

Instrument :
 ECD_O
 ClientSampled :

Integration File signal 1: autoint1.e
 Integration File signal 2: autoint2.e
 Quant Time: Dec 04 05:49:48 2018
 Quant Method : Z:\pestpcbsrv\HPCHEM1\ECD_L\methods\PL112018.M
 Quant Title : GC Extractables
 QLast Update : Tue Nov 20 02:29:59 2018
 Response via : Initial Calibration
 Integrator: ChemStation

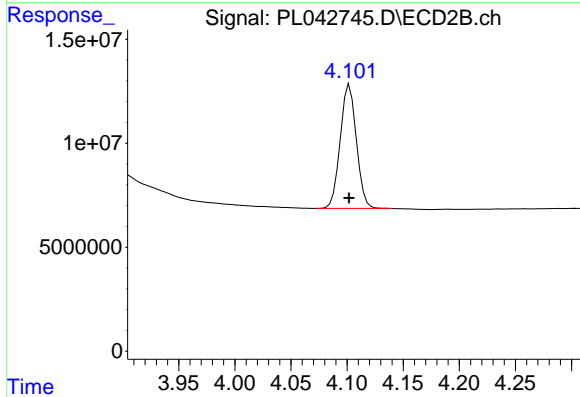
Volume Inj. : 2 µl
 Signal #1 Phase : ZB-MR1 Signal #2 Phase: ZB-MR2
 Signal #1 Info : 30M x 0.32mm x0.5 Signal #2 Info : 30M x 0.32mm x0.25µm



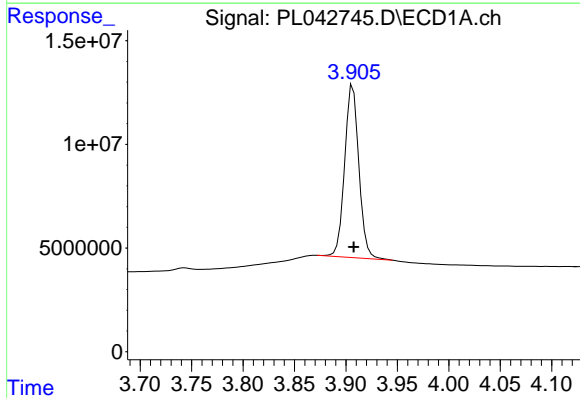


#1 Tetrachloro-m-xylene
 R.T.: 3.467 min
 Delta R.T.: 0.000 min
 Response: 112640608
 Conc: 19.15 ng/ml

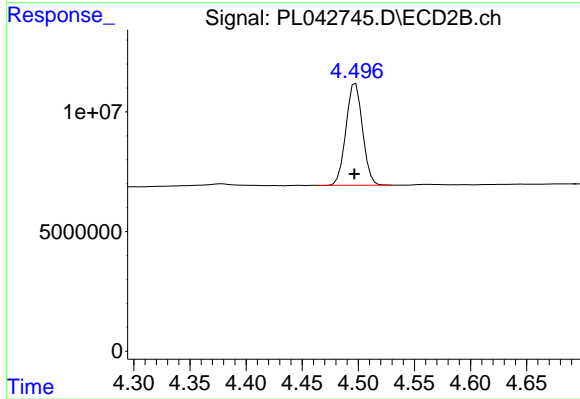
Instrument :
 ECD_O
 ClientSampleId :



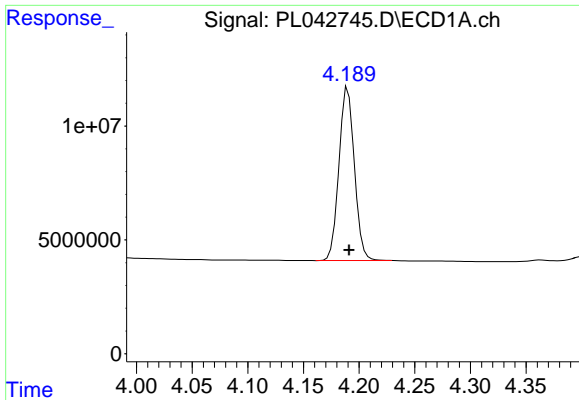
#1 Tetrachloro-m-xylene
 R.T.: 4.102 min
 Delta R.T.: 0.000 min
 Response: 59654465
 Conc: 20.74 ng/ml



#2 alpha-BHC
 R.T.: 3.907 min
 Delta R.T.: -0.001 min
 Response: 80044367
 Conc: 8.87 ng/ml



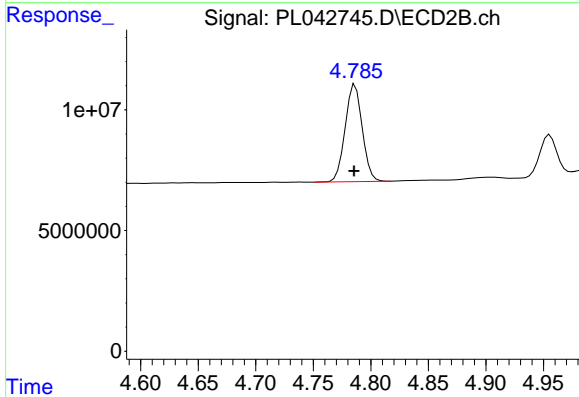
#2 alpha-BHC
 R.T.: 4.498 min
 Delta R.T.: 0.000 min
 Response: 43653849
 Conc: 10.19 ng/ml



#3 gamma-BHC (Lindane)

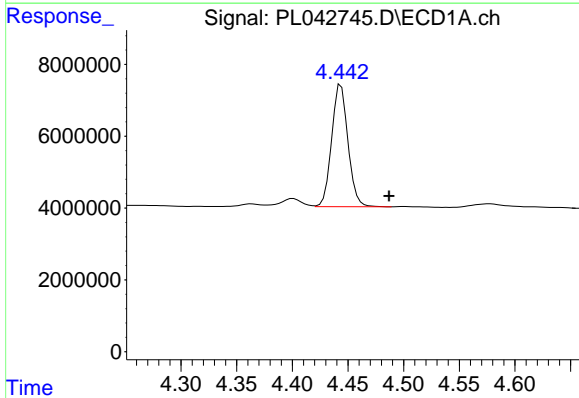
R.T.: 4.190 min
 Delta R.T.: -0.001 min
 Response: 73435031
 Conc: 8.91 ng/ml

Instrument :
 ECD_O
 ClientSampleId :



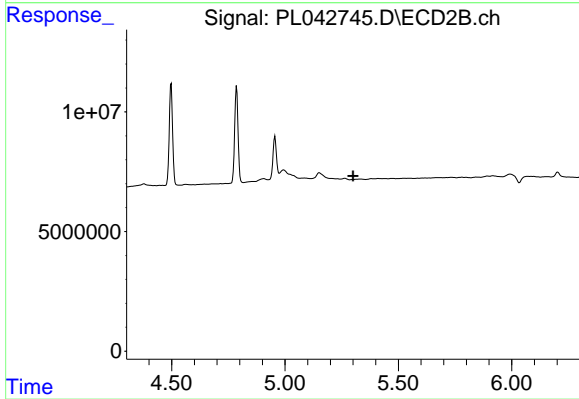
#3 gamma-BHC (Lindane)

R.T.: 4.786 min
 Delta R.T.: 0.000 min
 Response: 41867114
 Conc: 10.59 ng/ml



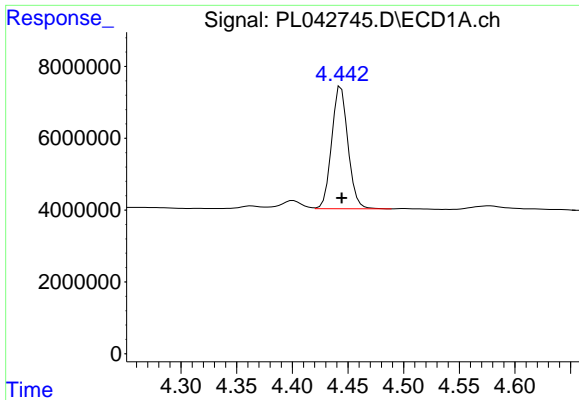
#4 Heptachlor

R.T.: 4.444 min
 Delta R.T.: -0.043 min
 Response: 34717894
 Conc: 3.99 ng/ml



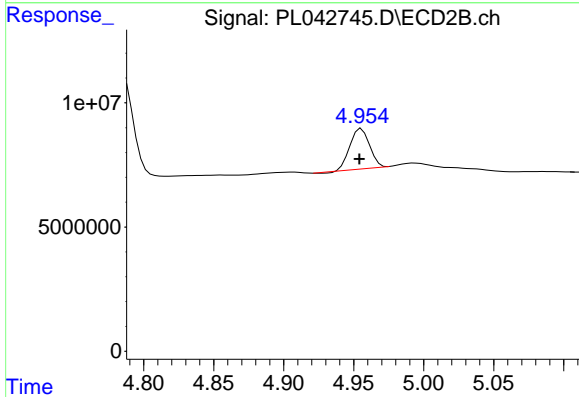
#4 Heptachlor

R.T.: 0.000 min
 Exp R.T. : 5.301 min
 Response: 0
 Conc: N.D.

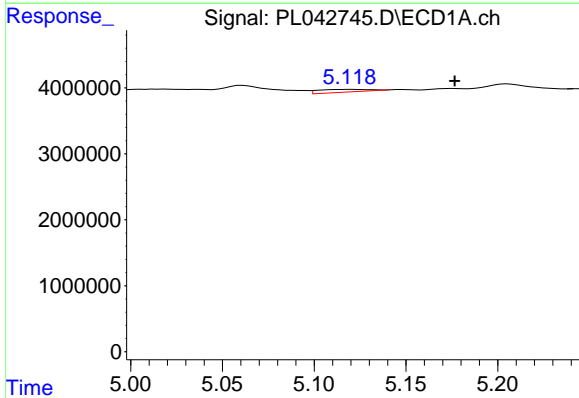


#6 beta-BHC
 R.T.: 4.444 min
 Delta R.T.: 0.000 min
 Response: 34717894
 Conc: 9.80 ng/ml

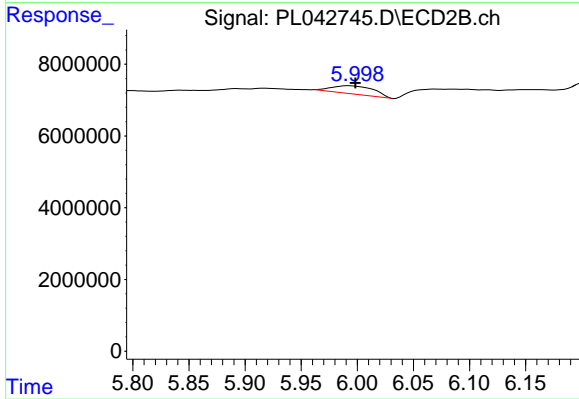
Instrument :
 ECD_O
 ClientSampleId :



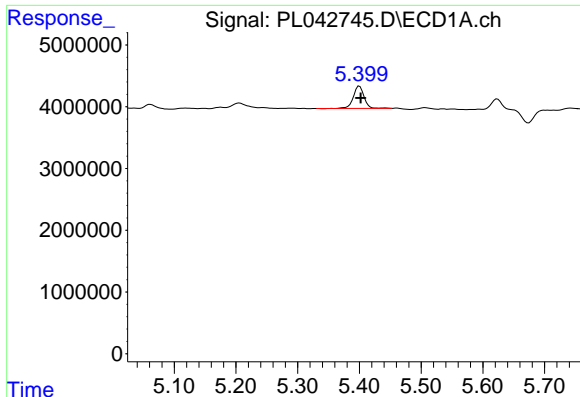
#6 beta-BHC
 R.T.: 4.956 min
 Delta R.T.: 0.002 min
 Response: 15626687
 Conc: 9.90 ng/ml



#8 Heptachlor epoxide
 R.T.: 5.119 min
 Delta R.T.: -0.057 min
 Response: 804261
 Conc: 0.11 ng/ml



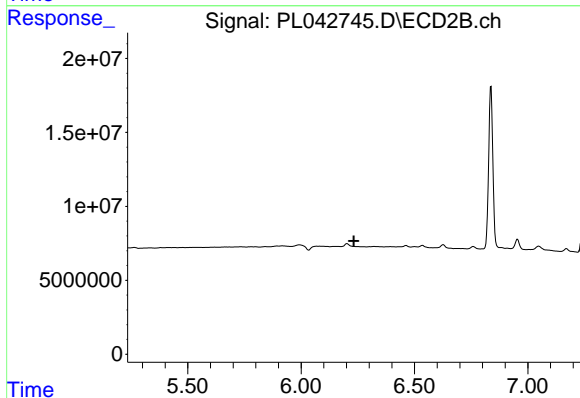
#8 Heptachlor epoxide
 R.T.: 5.992 min
 Delta R.T.: -0.006 min
 Response: 5587758
 Conc: 1.56 ng/ml



#10 gamma-Chlordane

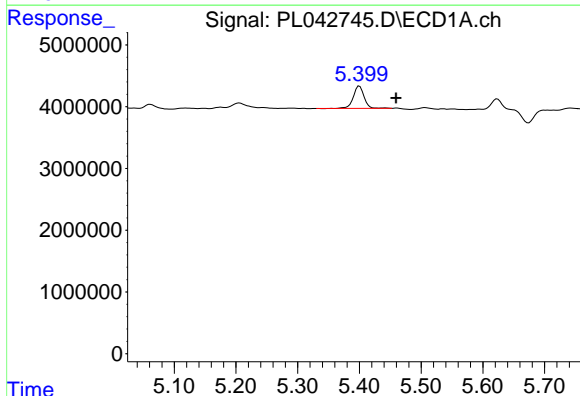
R.T.: 5.400 min
 Delta R.T.: -0.002 min
 Response: 4412987
 Conc: 0.58 ng/ml

Instrument :
 ECD_O
 ClientSampled :



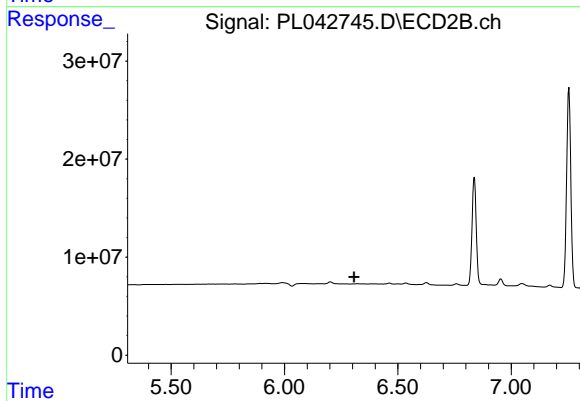
#10 gamma-Chlordane

R.T.: 0.000 min
 Exp R.T. : 6.233 min
 Response: 0
 Conc: N.D.



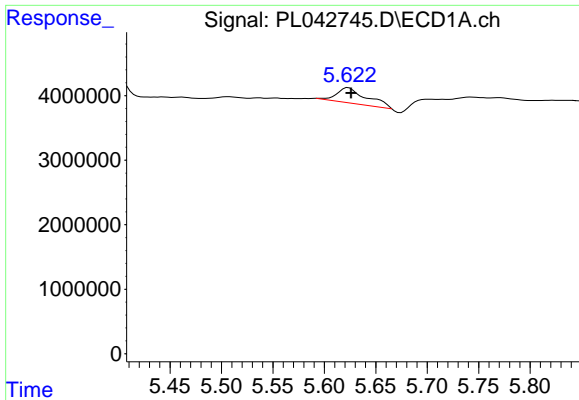
#11 alpha-Chlordane

R.T.: 5.400 min
 Delta R.T.: -0.059 min
 Response: 4412987
 Conc: 0.59 ng/ml



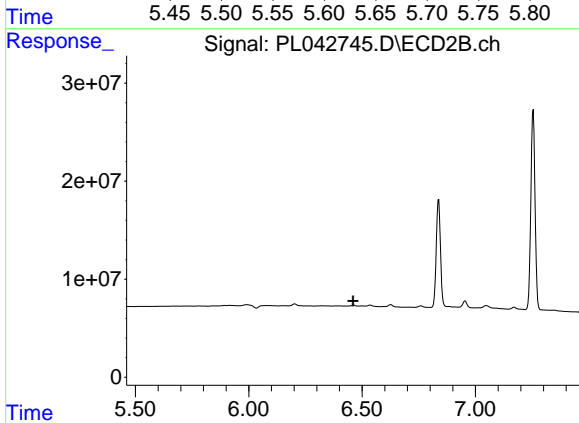
#11 alpha-Chlordane

R.T.: 0.000 min
 Exp R.T. : 6.307 min
 Response: 0
 Conc: N.D.

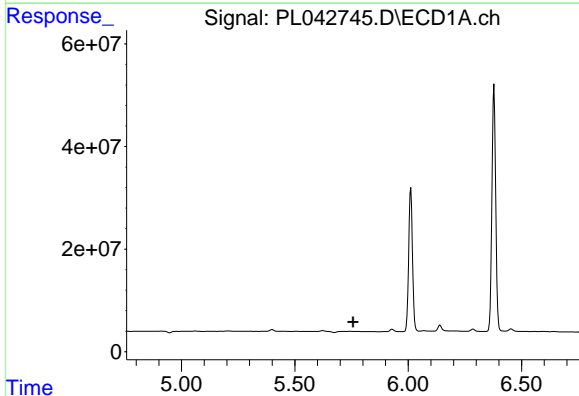


#12 4,4'-DDE
 R.T.: 5.623 min
 Delta R.T.: -0.002 min
 Response: 4629782
 Conc: 0.71 ng/ml

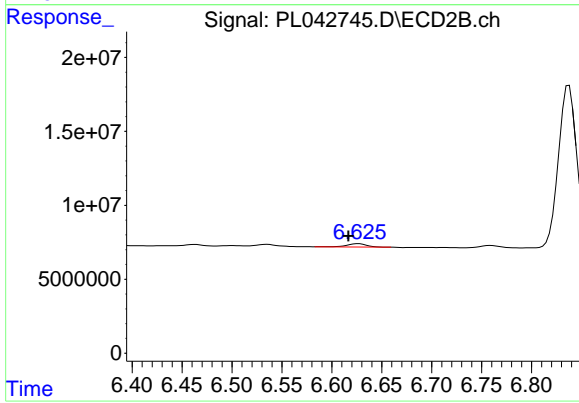
Instrument :
 ECD_O
 ClientSampled :



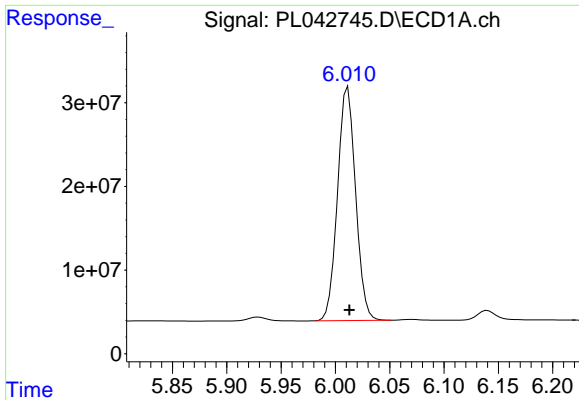
#12 4,4'-DDE
 R.T.: 0.000 min
 Exp R.T. : 6.461 min
 Response: 0
 Conc: N.D.



#13 Dieldrin
 R.T.: 0.000 min
 Exp R.T. : 5.756 min
 Response: 0
 Conc: N.D.

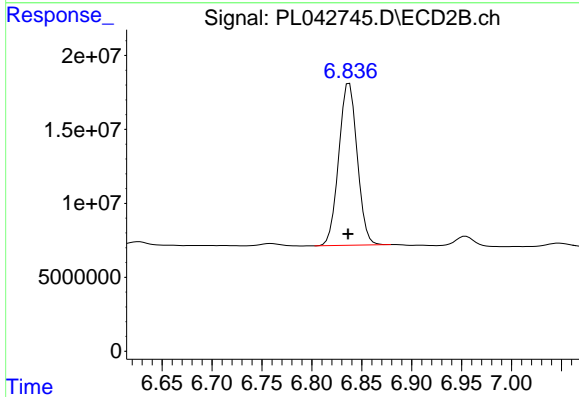


#13 Dieldrin
 R.T.: 6.626 min
 Delta R.T.: 0.010 min
 Response: 3100748
 Conc: 0.93 ng/ml

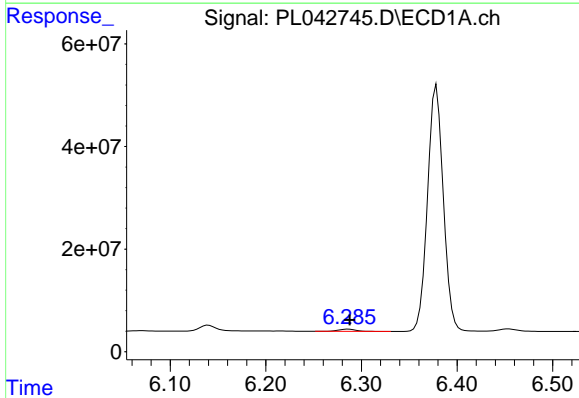


#14 Endrin
 R.T.: 6.011 min
 Delta R.T.: -0.002 min
 Response: 323166060
 Conc: 49.41 ng/ml

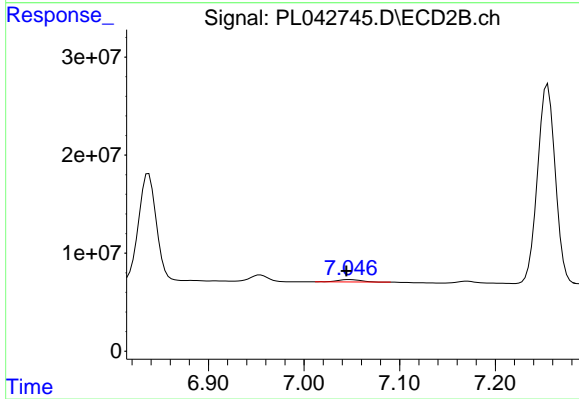
Instrument :
 ECD_O
 ClientSampleId :



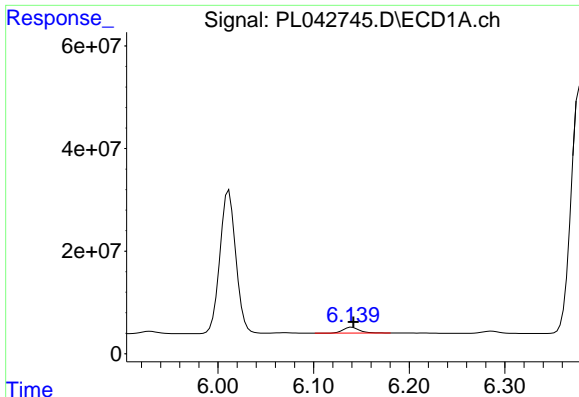
#14 Endrin
 R.T.: 6.838 min
 Delta R.T.: 0.001 min
 Response: 141007713
 Conc: 51.19 ng/ml



#15 Endosulfan II
 R.T.: 6.286 min
 Delta R.T.: -0.002 min
 Response: 5502619
 Conc: 0.88 ng/ml



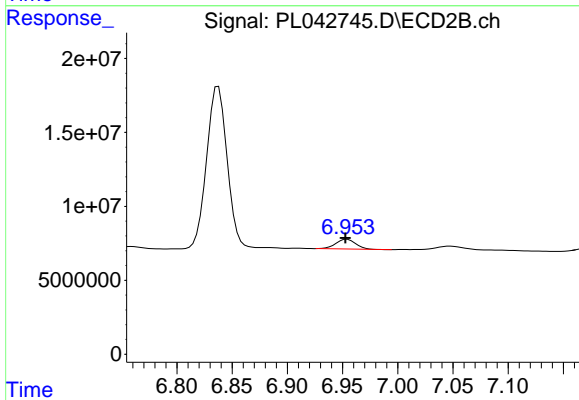
#15 Endosulfan II
 R.T.: 7.048 min
 Delta R.T.: 0.003 min
 Response: 4071889
 Conc: 1.47 ng/ml



#16 4,4'-DDD

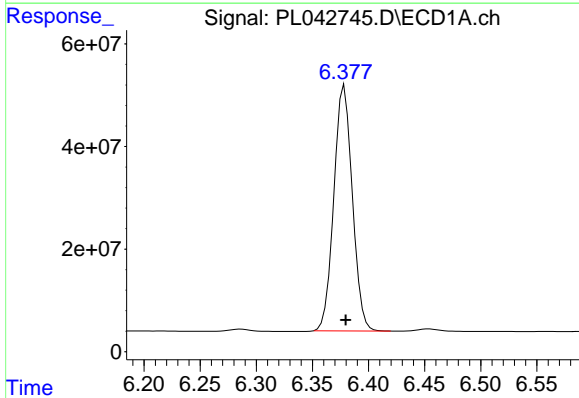
R.T.: 6.140 min
 Delta R.T.: -0.002 min
 Response: 13566482
 Conc: 2.56 ng/ml

Instrument :
 ECD_O
 ClientSampled :



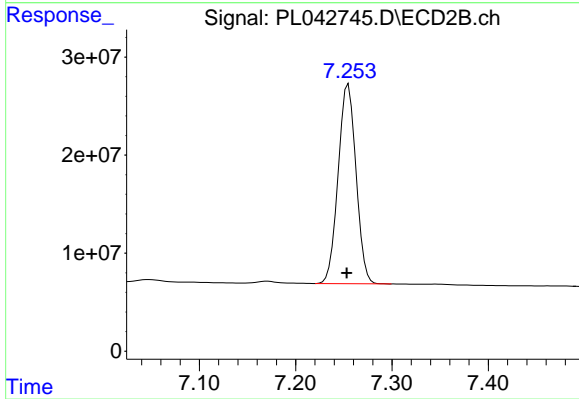
#16 4,4'-DDD

R.T.: 6.954 min
 Delta R.T.: 0.002 min
 Response: 8301272
 Conc: 3.15 ng/ml



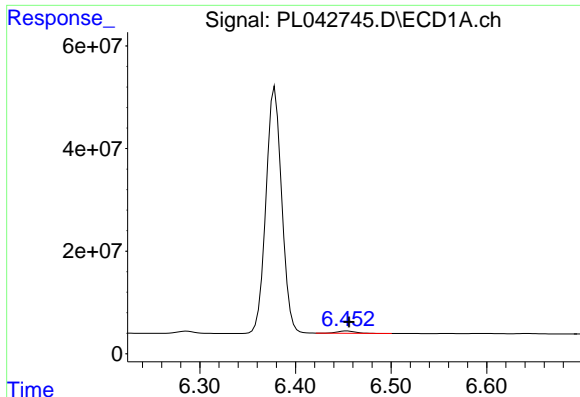
#17 4,4'-DDT

R.T.: 6.379 min
 Delta R.T.: -0.001 min
 Response: 549251312
 Conc: 98.66 ng/ml



#17 4,4'-DDT

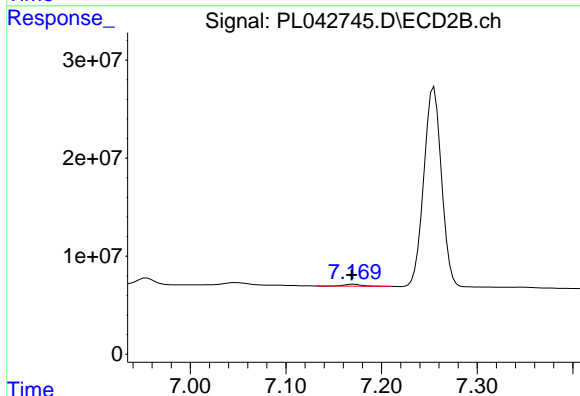
R.T.: 7.255 min
 Delta R.T.: 0.002 min
 Response: 262098895
 Conc: 99.26 ng/ml



#18 Endrin aldehyde

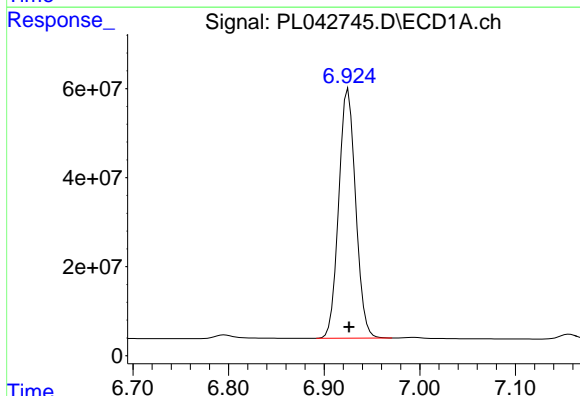
R.T.: 6.454 min
 Delta R.T.: -0.002 min
 Response: 5509507
 Conc: 1.06 ng/ml

Instrument :
 ECD_O
 ClientSampled :



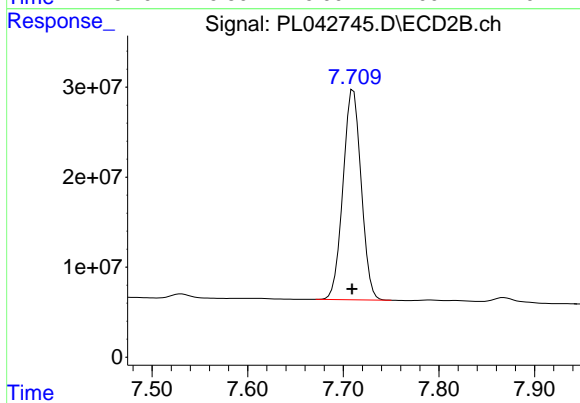
#18 Endrin aldehyde

R.T.: 7.170 min
 Delta R.T.: 0.002 min
 Response: 2461135
 Conc: 1.07 ng/ml



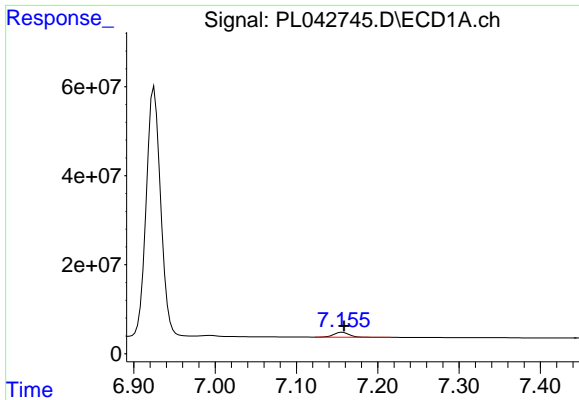
#20 Methoxychlor

R.T.: 6.925 min
 Delta R.T.: -0.001 min
 Response: 689246294
 Conc: 218.54 ng/ml



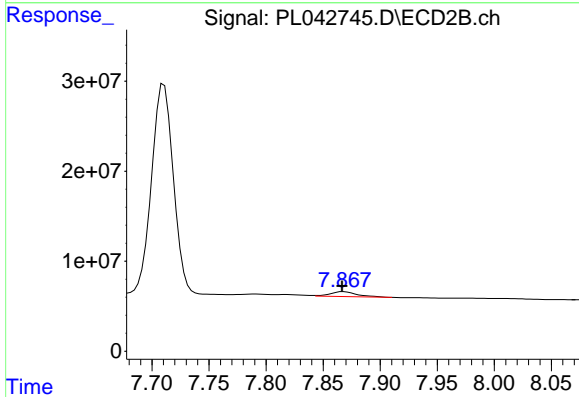
#20 Methoxychlor

R.T.: 7.711 min
 Delta R.T.: 0.001 min
 Response: 309134808
 Conc: 226.73 ng/ml

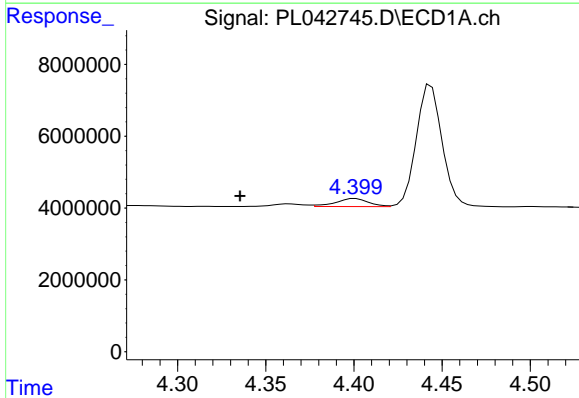


#21 Endrin ketone
 R.T.: 7.157 min
 Delta R.T.: -0.002 min
 Response: 14253380
 Conc: 2.06 ng/ml

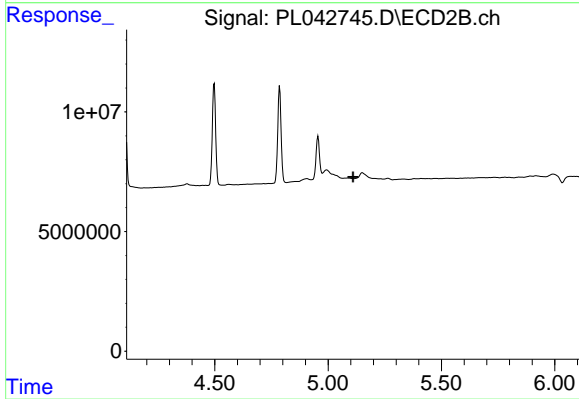
Instrument :
 ECD_O
 ClientSampled :



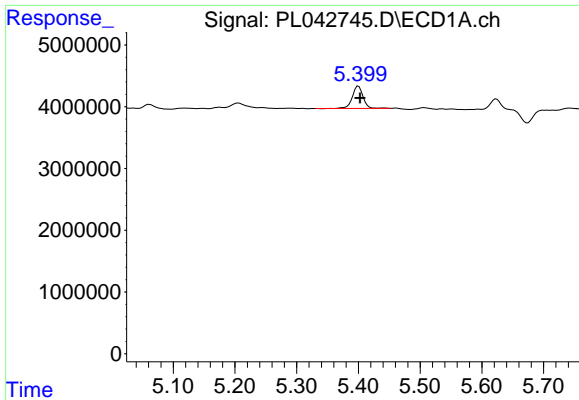
#21 Endrin ketone
 R.T.: 7.868 min
 Delta R.T.: 0.002 min
 Response: 8720573
 Conc: 3.16 ng/ml



#23 Chlordane-1
 R.T.: 4.401 min
 Delta R.T.: 0.065 min
 Response: 2923753
 Conc: 10.58 ng/ml

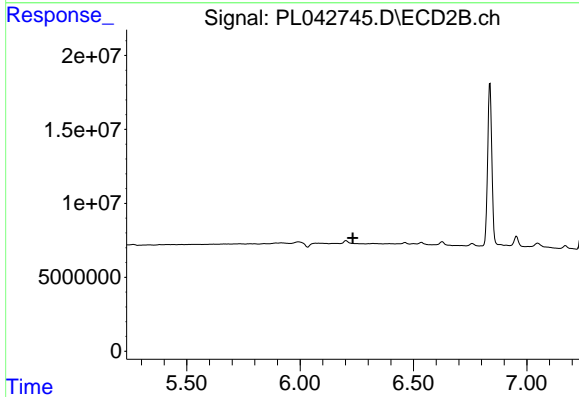


#23 Chlordane-1
 R.T.: 0.000 min
 Exp R.T. : 5.111 min
 Response: 0
 Conc: N.D.

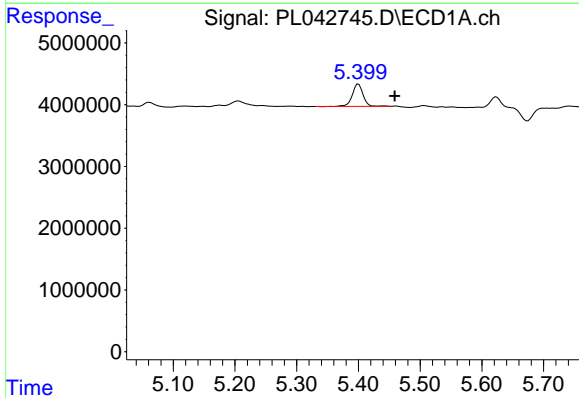


#25 Chlordane-3
 R.T.: 5.400 min
 Delta R.T.: -0.002 min
 Response: 4412987
 Conc: 5.03 ng/ml

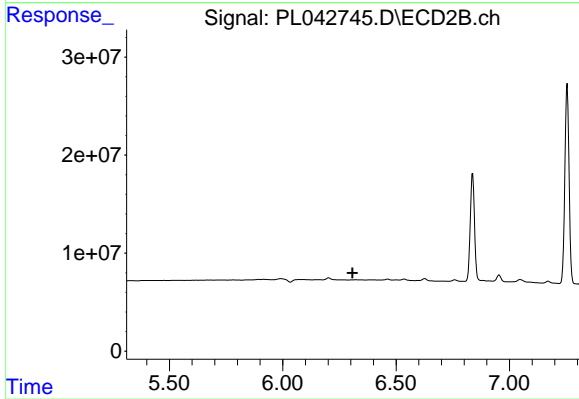
Instrument :
 ECD_O
 ClientSampled :



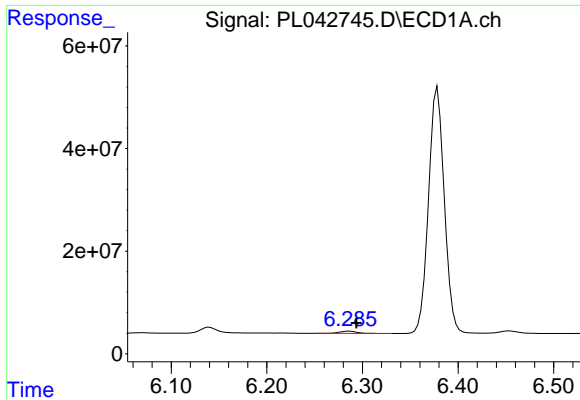
#25 Chlordane-3
 R.T.: 0.000 min
 Exp R.T. : 6.233 min
 Response: 0
 Conc: N.D.



#26 Chlordane-4
 R.T.: 5.400 min
 Delta R.T.: -0.059 min
 Response: 4412987
 Conc: 5.81 ng/ml

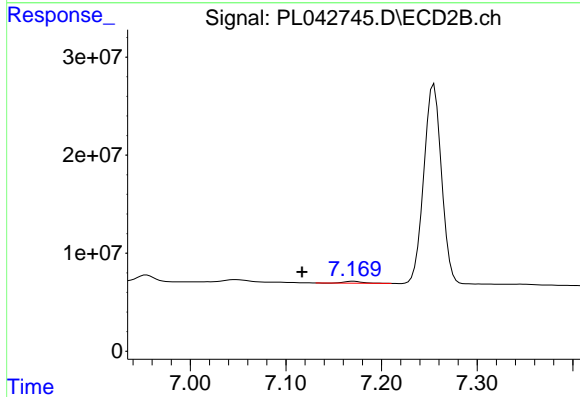


#26 Chlordane-4
 R.T.: 0.000 min
 Exp R.T. : 6.308 min
 Response: 0
 Conc: N.D.

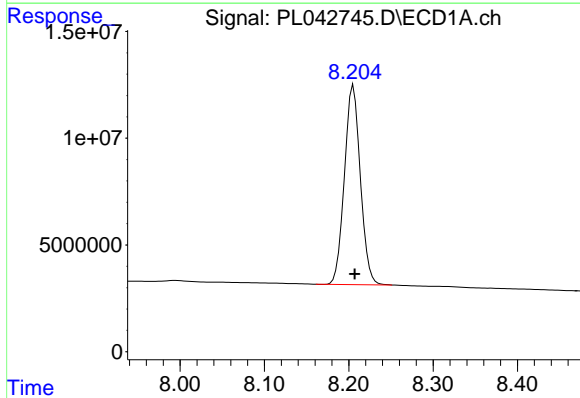


#27 Chlordane-5
 R.T.: 6.286 min
 Delta R.T.: -0.008 min
 Response: 5502619
 Conc: 18.47 ng/ml

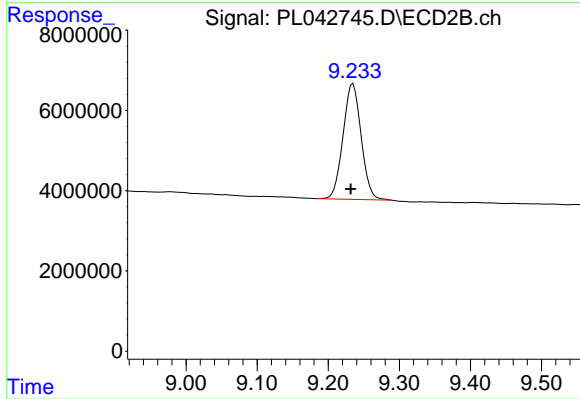
Instrument :
 ECD_O
 ClientSampled :



#27 Chlordane-5
 R.T.: 7.170 min
 Delta R.T.: 0.053 min
 Response: 2461135
 Conc: 25.58 ng/ml



#28 Decachlorobiphenyl
 R.T.: 8.205 min
 Delta R.T.: -0.001 min
 Response: 122626932
 Conc: 19.46 ng/ml



#28 Decachlorobiphenyl
 R.T.: 9.235 min
 Delta R.T.: 0.003 min
 Response: 51089865
 Conc: 21.18 ng/ml