

Data Path : Z:\pestpcbsrv\HPCHEM1\ECD\_0\Data\PO120418\  
 Data File : P0052218.D  
 Signal(s) : Signal #1: ECD1A.CH Signal #2: ECD2B.CH  
 Acq On : 04 Dec 2018 11:10  
 Operator : SM/SJ  
 Sample : J6179-06  
 Misc :  
 ALS Vial : 9 Sample Multiplier: 1

Instrument :  
 ECD\_0  
 ClientSampleId :  
 S6-0-0.5-BGS

Integration File signal 1: autoint1.e  
 Integration File signal 2: autoint2.e  
 Quant Time: Dec 04 11:32:29 2018  
 Quant Method : Z:\pestpcbsrv\HPCHEM1\ECD\_0\methods\PO120318.M  
 Quant Title : GC EXTRACTABLES  
 QLast Update : Tue Dec 04 03:10:39 2018  
 Response via : Initial Calibration  
 Integrator: ChemStation 6890 Scale Mode: Small noise peaks clipped

Volume Inj. : 2 µl  
 Signal #1 Phase : ZB-MR1 Signal #2 Phase: ZB-MR2  
 Signal #1 Info : 30Mx0.32mmx 0.50µ Signal #2 Info : 30M x 0.32mm x 0.25µm

Compound	RT#1	RT#2	Resp#1	Resp#2	ng/ml	ng/ml
----------	------	------	--------	--------	-------	-------

-----  
 System Monitoring Compounds

1) SA Tetrachlo...	4.277	3.292	10667435	2893779	12.391	12.975
2) SA Decachlor...	9.856	7.992	4459418	2029180	8.911	9.734

Target Compounds  
 -----

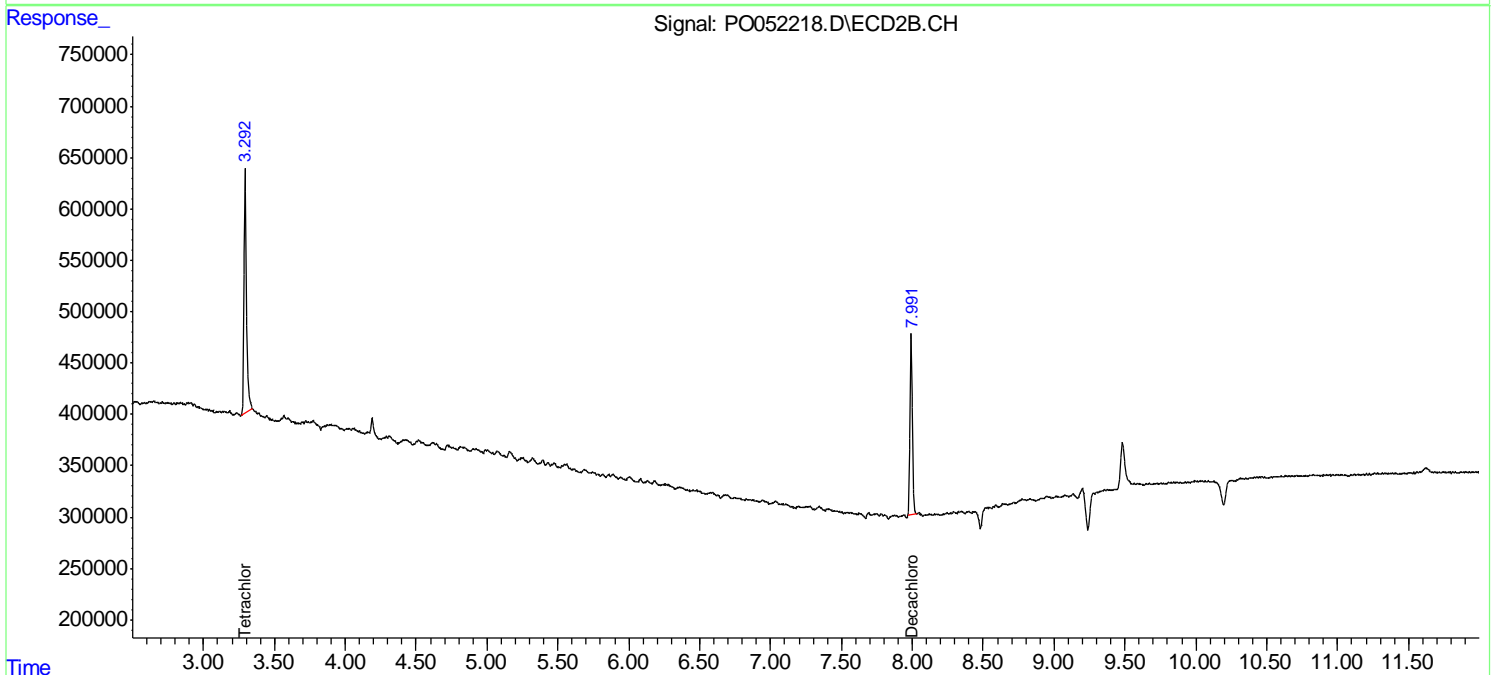
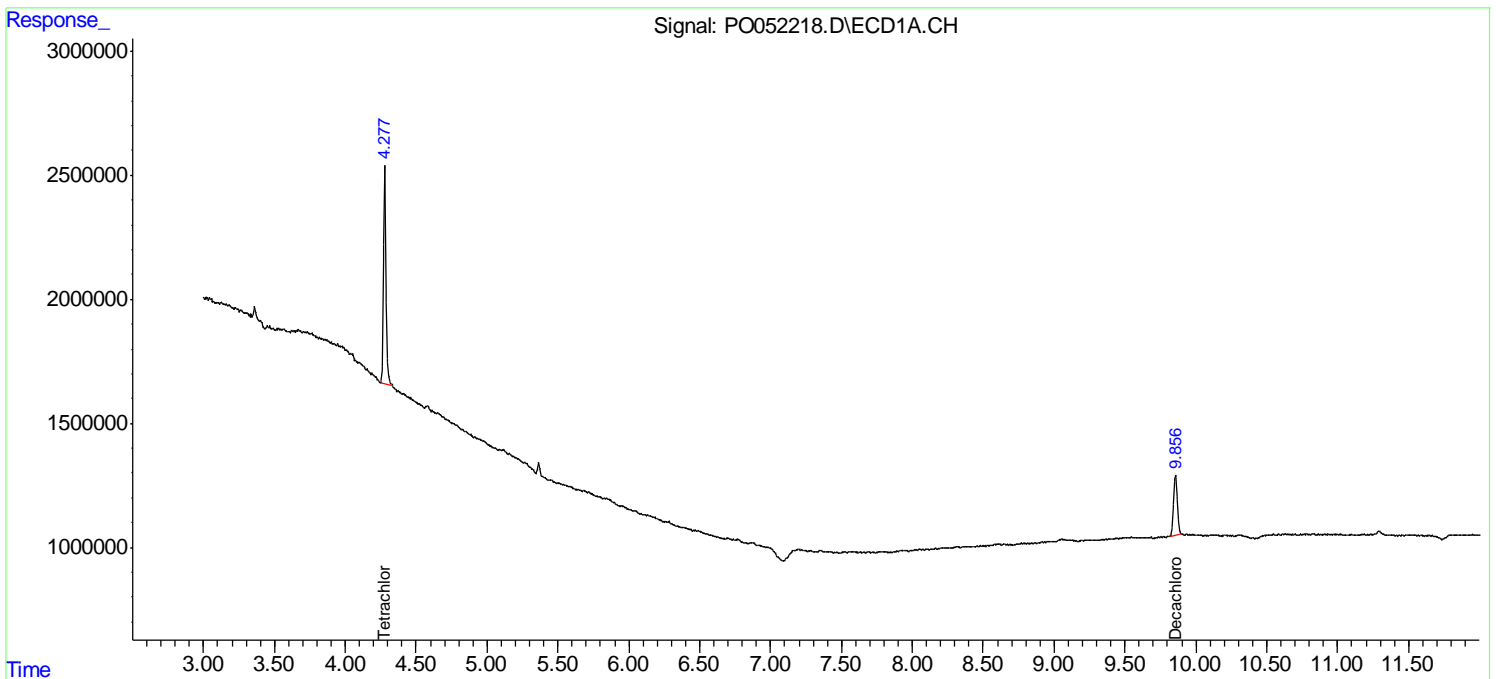
(f)=RT Delta > 1/2 Window (#)=Amounts differ by > 25% (m)=manual int.

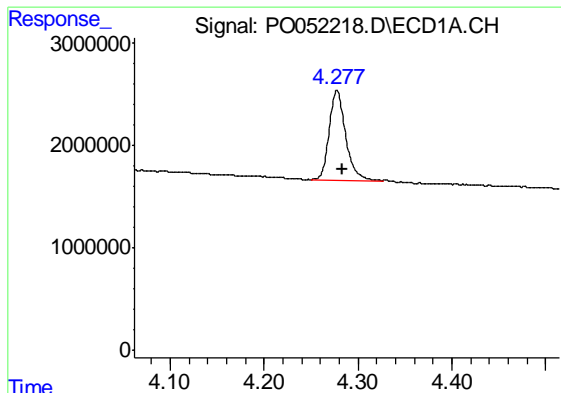
Data Path : Z:\pestpcbsrv\HPCHEM1\ECD\_O\Data\PO120418\  
 Data File : PO052218.D  
 Signal(s) : Signal #1: ECD1A.CH Signal #2: ECD2B.CH  
 Acq On : 04 Dec 2018 11:10  
 Operator : SM/SJ  
 Sample : J6179-06  
 Misc :  
 ALS Vial : 9 Sample Multiplier: 1

Instrument :  
 ECD\_O  
 ClientSampleId :  
 S6-0-0.5-BGS

Integration File signal 1: autoint1.e  
 Integration File signal 2: autoint2.e  
 Quant Time: Dec 04 11:32:29 2018  
 Quant Method : Z:\pestpcbsrv\HPCHEM1\ECD\_O\methods\PO120318.M  
 Quant Title : GC EXTRACTABLES  
 QLast Update : Tue Dec 04 03:10:39 2018  
 Response via : Initial Calibration  
 Integrator: ChemStation 6890 Scale Mode: Small noise peaks clipped

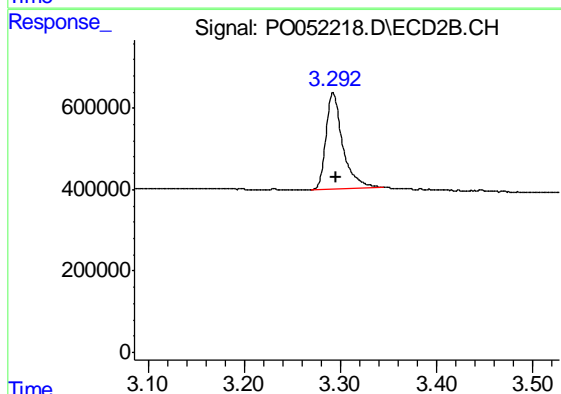
Volume Inj. : 2 µl  
 Signal #1 Phase : ZB-MR1 Signal #2 Phase: ZB-MR2  
 Signal #1 Info : 30Mx0.32mmx 0.50µ Signal #2 Info : 30M x 0.32mm x 0.25µm



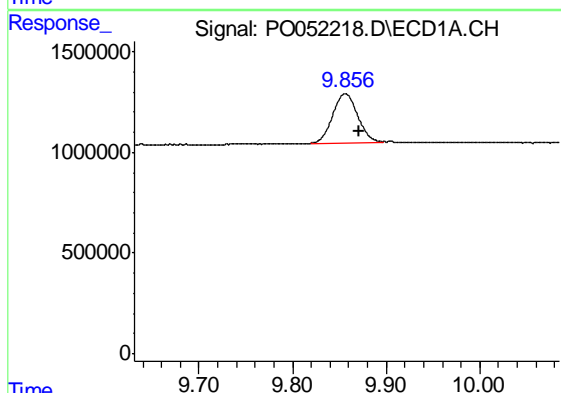


#1 Tetrachloro-m-xylene  
 R.T.: 4.277 min  
 Delta R.T.: -0.006 min  
 Response: 10667435  
 Conc: 12.39 ng/ml

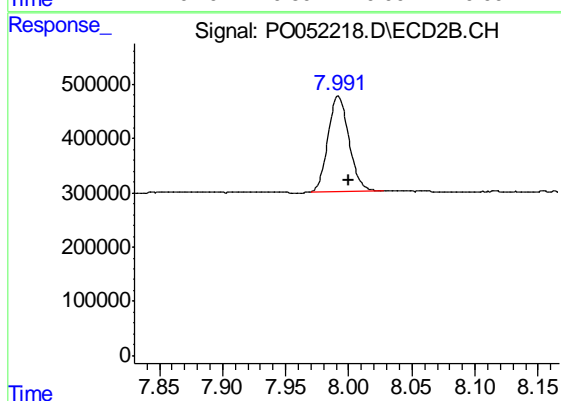
Instrument :  
 ECD\_O  
 ClientSampleId :  
 S6-0-0.5-BGS



#1 Tetrachloro-m-xylene  
 R.T.: 3.292 min  
 Delta R.T.: -0.004 min  
 Response: 2893779  
 Conc: 12.97 ng/ml



#2 Decachlorobiphenyl  
 R.T.: 9.856 min  
 Delta R.T.: -0.016 min  
 Response: 4459418  
 Conc: 8.91 ng/ml



#2 Decachlorobiphenyl  
 R.T.: 7.992 min  
 Delta R.T.: -0.008 min  
 Response: 2029180  
 Conc: 9.73 ng/ml