

Data Path : Z:\pestpcbsrv\HPCHEM1\ECD_O\Data\PO120718\
 Data File : P0052348.D
 Signal(s) : Signal #1: ECD1A.CH Signal #2: ECD2B.CH
 Acq On : 07 Dec 2018 23:44
 Operator : SM/SJ
 Sample : J6277-17
 Misc :
 ALS Vial : 22 Sample Multiplier: 1

Instrument :
 ECD_O
Client Sampled :
 580K-14B

Manual Integrations
APPROVED
 Sohil
 12/10/2018 2:21:20 PM

Integration File signal 1: autoint1.e
 Integration File signal 2: autoint2.e
 Quant Time: Dec 08 02:02:40 2018
 Quant Method : Z:\pestpcbsrv\HPCHEM1\ECD_O\methods\PO120318.M
 Quant Title : GC EXTRACTABLES
 QLast Update : Tue Dec 04 03:10:39 2018
 Response via : Initial Calibration
 Integrator: ChemStation 6890 Scale Mode: Small noise peaks clipped

Volume Inj. : 2 µl
 Signal #1 Phase : ZB-MR1 Signal #2 Phase: ZB-MR2
 Signal #1 Info : 30Mx0.32mmx 0.50µ Signal #2 Info : 30M x 0.32mm x 0.25µm

Compound	RT#1	RT#2	Resp#1	Resp#2	ng/ml	ng/ml

System Monitoring Compounds						
1) SA Tetrachlo...	4.270	3.288	12183628	3236309	14.152	14.511
2) SA Decachlor...	9.839	7.982	5392709	2526731	10.776	12.120
Target Compounds						
26) L6 AR-1254-1	6.271	5.035	43880158	22423946	1698.233m	1606.779
27) L6 AR-1254-2	6.487	5.176	64237084	20105829	1610.180	1598.407
28) L6 AR-1254-3	6.852	5.555	76808630	32562208	1830.015	1660.693
29) L6 AR-1254-4	7.136	5.775	46050335	17351950	1608.163	1532.659
30) L6 AR-1254-5	7.551	6.172	56668168	30958314	1924.459m	1836.911
31) L7 AR-1260-1	7.012	5.678	30386236	16090652	1029.479	1150.823
32) L7 AR-1260-2	7.268	5.861	37495850	13792228	1064.387	826.105
33) L7 AR-1260-3	7.615	6.001	9333439	12242455	385.878	773.049m#
34) L7 AR-1260-4	7.841	6.455	18667326	2290177	762.918m	219.414 #
35) L7 AR-1260-5	8.156	6.694	11160208	4474485	227.136	185.051m

(f)=RT Delta > 1/2 Window (#)=Amounts differ by > 25% (m)=manual int.

Data Path : Z:\pestpcbsrv\HPCHEM1\ECD_O\Data\PO120718\
 Data File : PO052348.D
 Signal(s) : Signal #1: ECD1A.CH Signal #2: ECD2B.CH
 Acq On : 07 Dec 2018 23:44
 Operator : SM/SJ
 Sample : J6277-17
 Misc :
 ALS Vial : 22 Sample Multiplier: 1

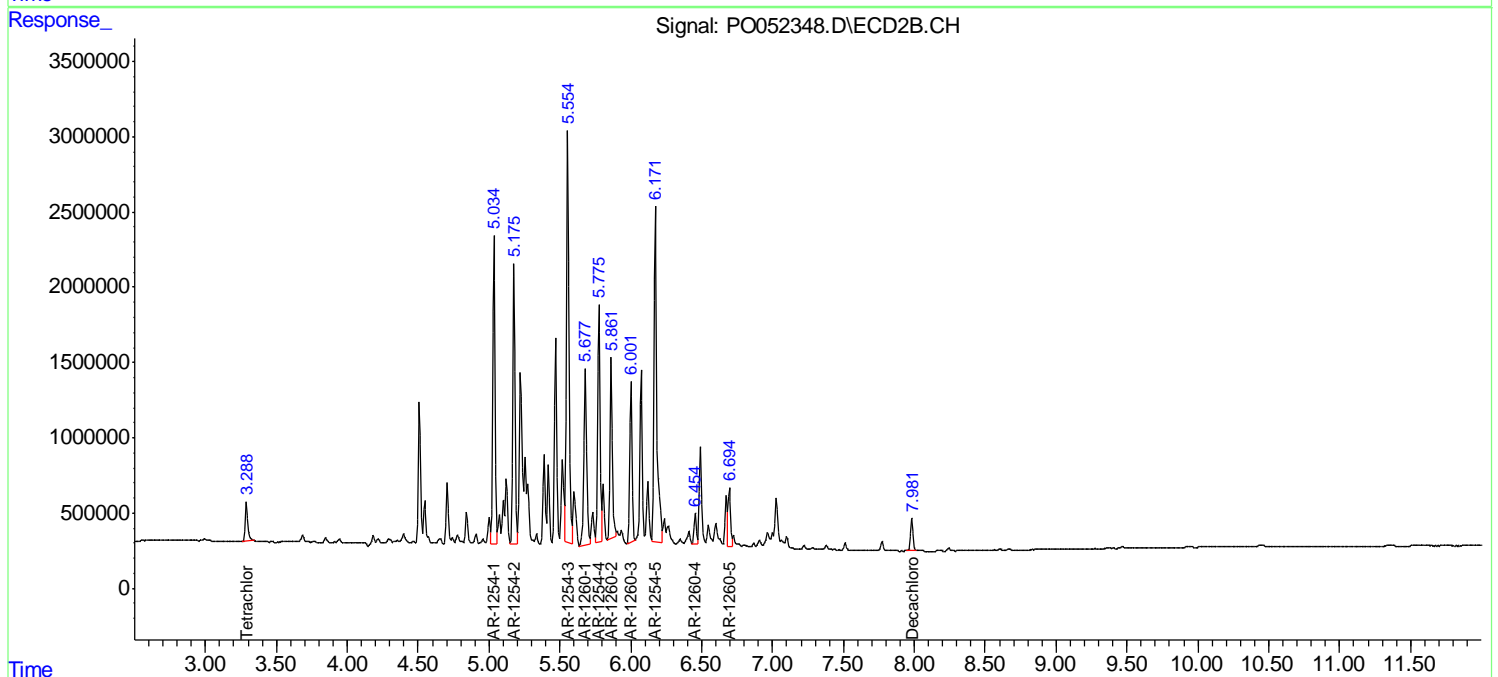
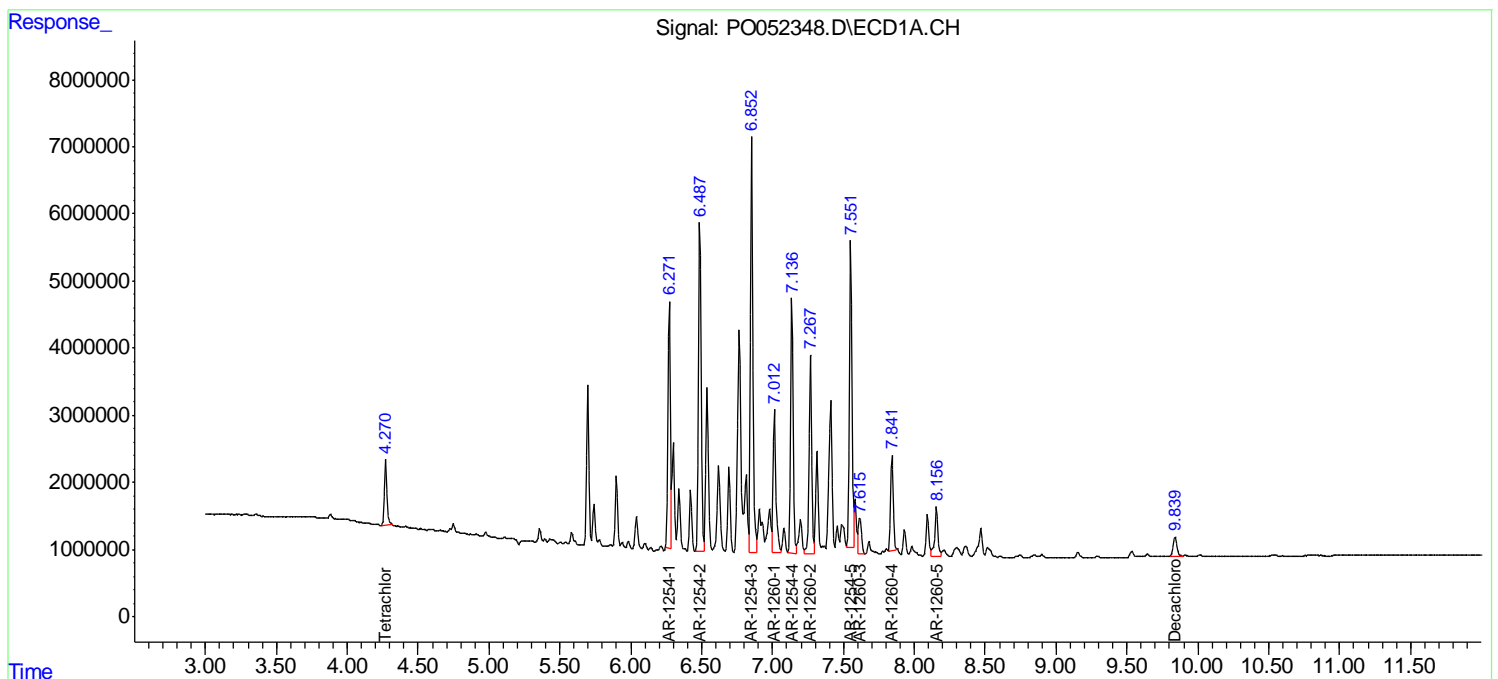
Instrument :
 ECD_O
 Client Sampled :
 580K-14B

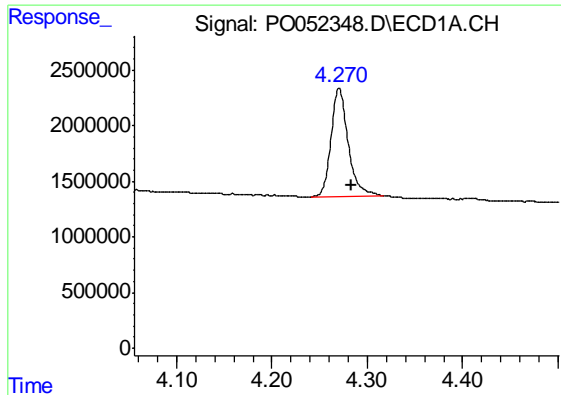
Manual Integrations
 APPROVED

Sohil
 12/10/2018 2:21:20 PM

Integration File signal 1: autoint1.e
 Integration File signal 2: autoint2.e
 Quant Time: Dec 08 02:02:40 2018
 Quant Method : Z:\pestpcbsrv\HPCHEM1\ECD_O\methods\PO120318.M
 Quant Title : GC EXTRACTABLES
 QLast Update : Tue Dec 04 03:10:39 2018
 Response via : Initial Calibration
 Integrator: ChemStation 6890 Scale Mode: Small noise peaks clipped

Volume Inj. : 2 µl
 Signal #1 Phase : ZB-MR1 Signal #2 Phase: ZB-MR2
 Signal #1 Info : 30Mx0.32mmx 0.50µ Signal #2 Info : 30M x 0.32mm x 0.25µm





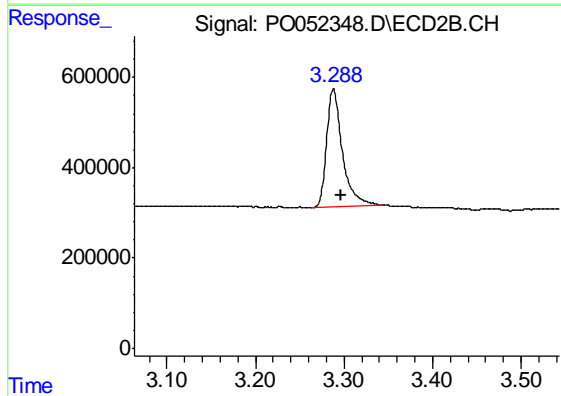
#1 Tetrachloro-m-xylene

R.T.: 4.270 min
 Delta R.T.: -0.013 min
 Response: 12183628
 Conc: 14.15 ng/ml

Instrument :
 ECD_O
 ClientSampleId :
 580K-14B

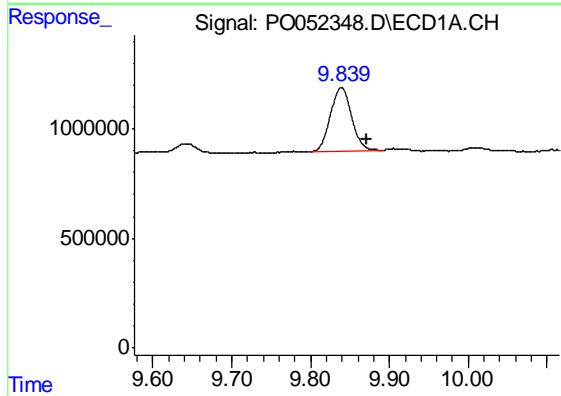
Manual Integrations
 APPROVED

Sohil
 12/10/2018 2:21:20 PM



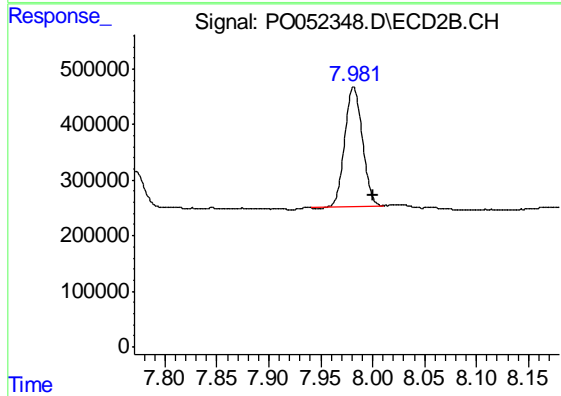
#1 Tetrachloro-m-xylene

R.T.: 3.288 min
 Delta R.T.: -0.008 min
 Response: 3236309
 Conc: 14.51 ng/ml



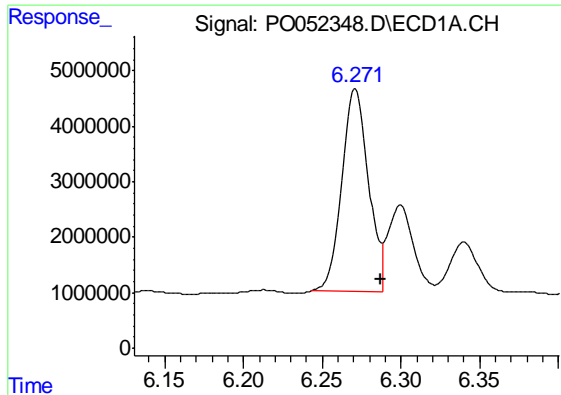
#2 Decachlorobiphenyl

R.T.: 9.839 min
 Delta R.T.: -0.033 min
 Response: 5392709
 Conc: 10.78 ng/ml



#2 Decachlorobiphenyl

R.T.: 7.982 min
 Delta R.T.: -0.018 min
 Response: 2526731
 Conc: 12.12 ng/ml



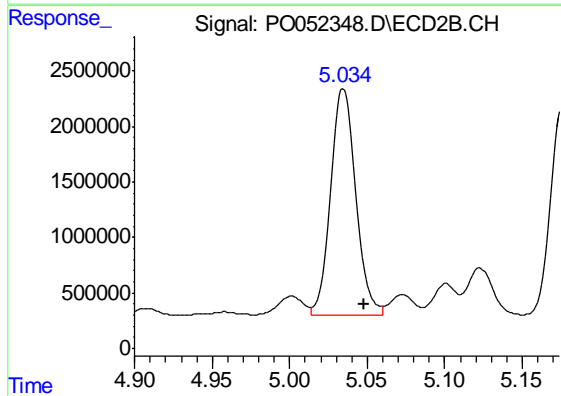
#26 AR-1254-1

R.T.: 6.271 min
 Delta R.T.: -0.017 min
 Response: 43880158
 Conc: 1698.23 ng/ml m

Instrument :
 ECD_O
 ClientSampled :
 580K-14B

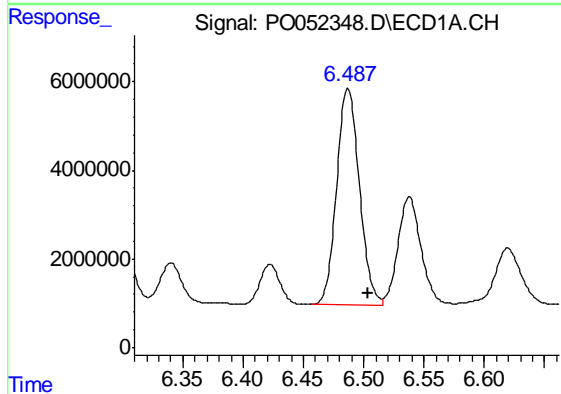
Manual Integrations
 APPROVED

Sohil
 12/10/2018 2:21:20 PM



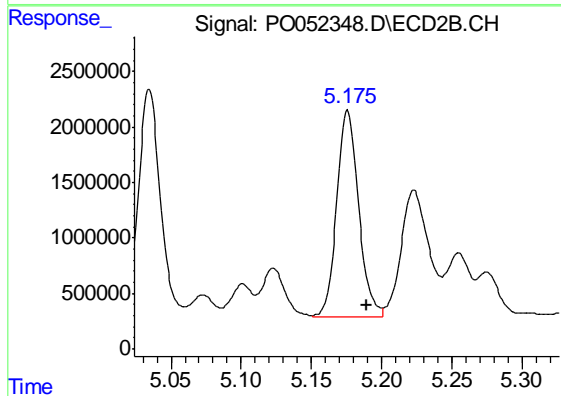
#26 AR-1254-1

R.T.: 5.035 min
 Delta R.T.: -0.013 min
 Response: 22423946
 Conc: 1606.78 ng/ml



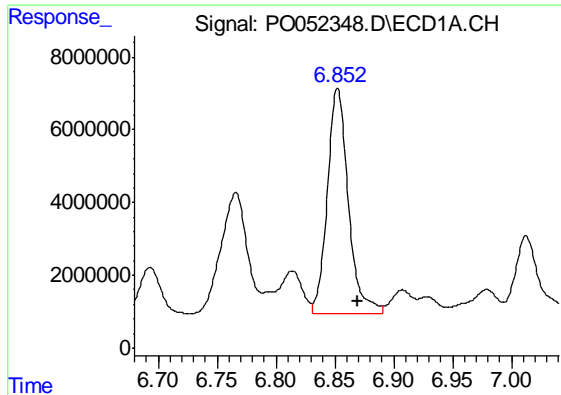
#27 AR-1254-2

R.T.: 6.487 min
 Delta R.T.: -0.016 min
 Response: 64237084
 Conc: 1610.18 ng/ml



#27 AR-1254-2

R.T.: 5.176 min
 Delta R.T.: -0.013 min
 Response: 20105829
 Conc: 1598.41 ng/ml



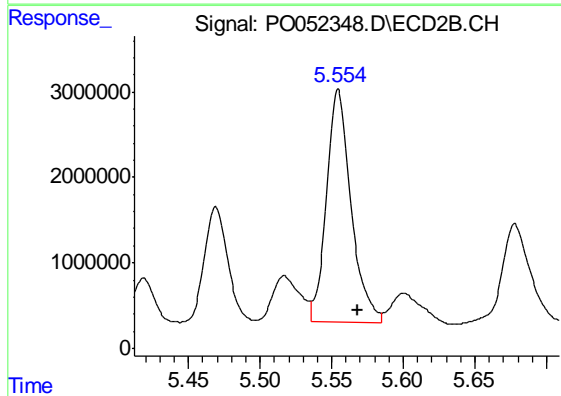
#28 AR-1254-3

R.T.: 6.852 min
Delta R.T.: -0.017 min
Response: 76808630
Conc: 1830.01 ng/ml

Instrument :
ECD_O
ClientSampled :
580K-14B

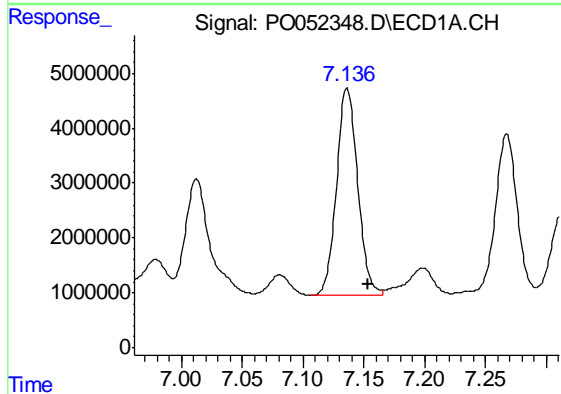
Manual Integrations
APPROVED

Sohil
12/10/2018 2:21:20 PM



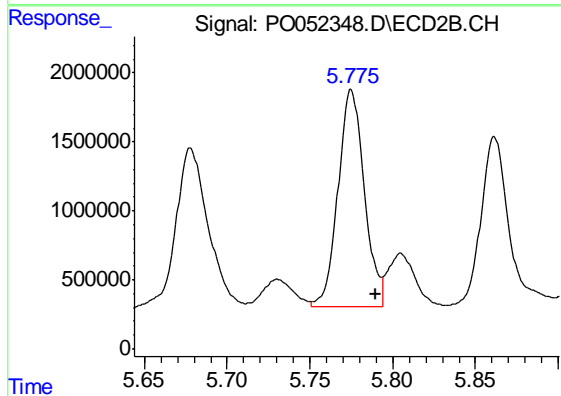
#28 AR-1254-3

R.T.: 5.555 min
Delta R.T.: -0.014 min
Response: 32562208
Conc: 1660.69 ng/ml



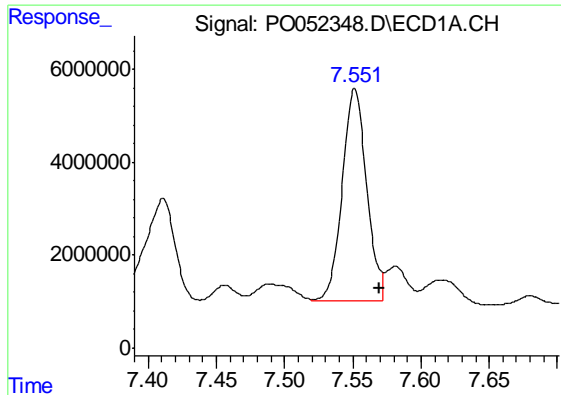
#29 AR-1254-4

R.T.: 7.136 min
Delta R.T.: -0.017 min
Response: 46050335
Conc: 1608.16 ng/ml



#29 AR-1254-4

R.T.: 5.775 min
Delta R.T.: -0.015 min
Response: 17351950
Conc: 1532.66 ng/ml

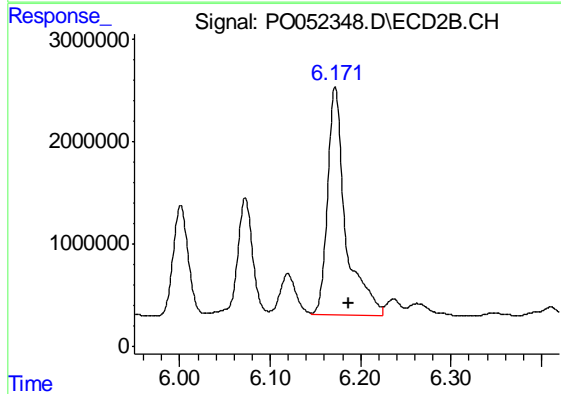


#30 AR-1254-5
 R.T.: 7.551 min
 Delta R.T.: -0.018 min
 Response: 56668168
 Conc: 1924.46 ng/ml m

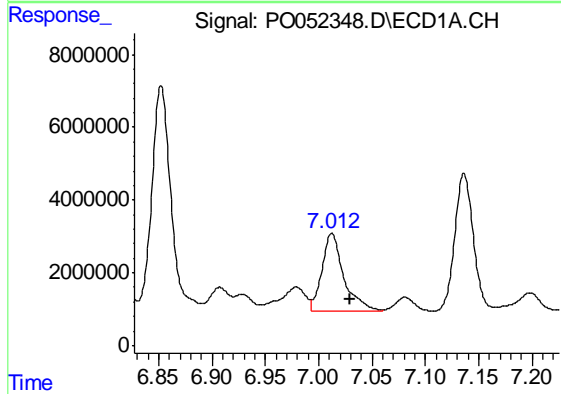
Instrument :
 ECD_O
 ClientSampleId :
 580K-14B

Manual Integrations
 APPROVED

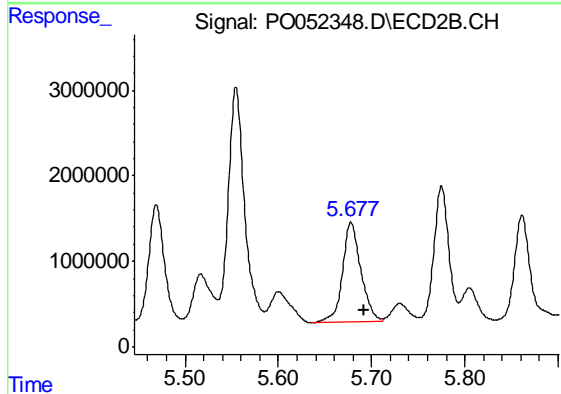
Sohil
 12/10/2018 2:21:20 PM



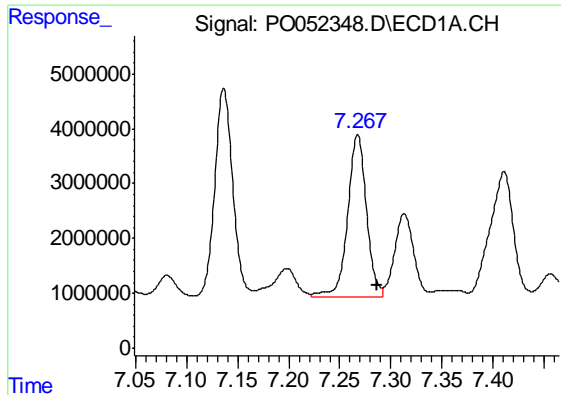
#30 AR-1254-5
 R.T.: 6.172 min
 Delta R.T.: -0.016 min
 Response: 30958314
 Conc: 1836.91 ng/ml



#31 AR-1260-1
 R.T.: 7.012 min
 Delta R.T.: -0.018 min
 Response: 30386236
 Conc: 1029.48 ng/ml



#31 AR-1260-1
 R.T.: 5.678 min
 Delta R.T.: -0.014 min
 Response: 16090652
 Conc: 1150.82 ng/ml



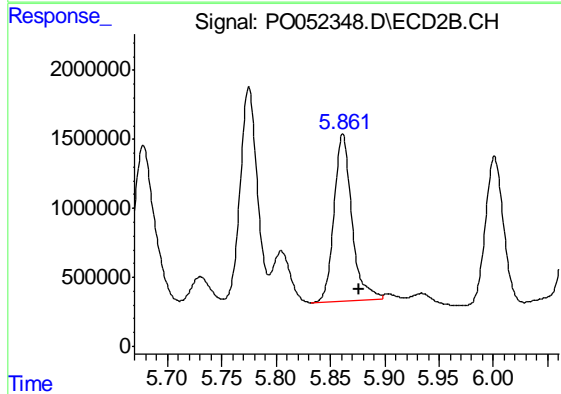
#32 AR-1260-2

R.T.: 7.268 min
 Delta R.T.: -0.019 min
 Response: 37495850
 Conc: 1064.39 ng/ml

Instrument :
 ECD_O
 ClientSampleId :
 580K-14B

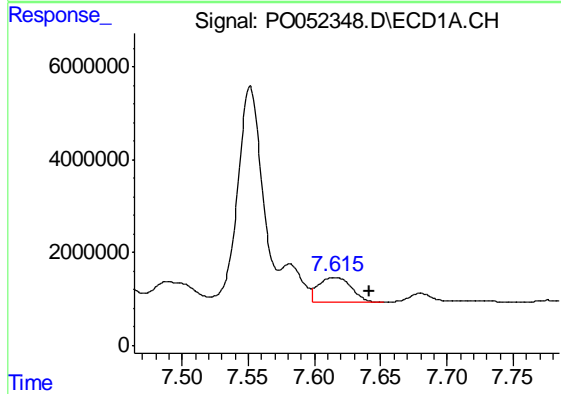
Manual Integrations
 APPROVED

Sohil
 12/10/2018 2:21:20 PM



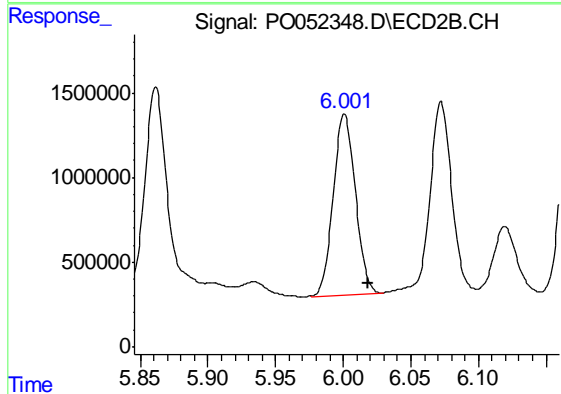
#32 AR-1260-2

R.T.: 5.861 min
 Delta R.T.: -0.015 min
 Response: 13792228
 Conc: 826.10 ng/ml



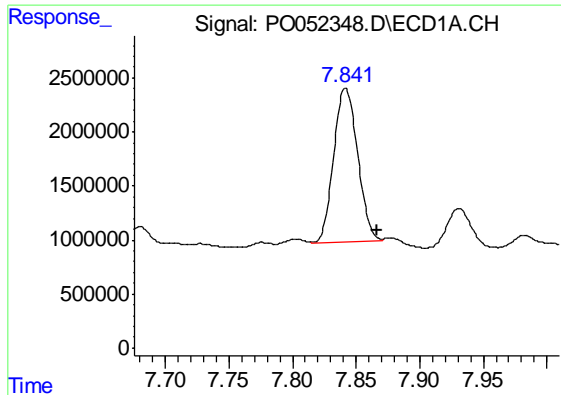
#33 AR-1260-3

R.T.: 7.615 min
 Delta R.T.: -0.026 min
 Response: 9333439
 Conc: 385.88 ng/ml



#33 AR-1260-3

R.T.: 6.001 min
 Delta R.T.: -0.017 min
 Response: 12242455
 Conc: 773.05 ng/ml m



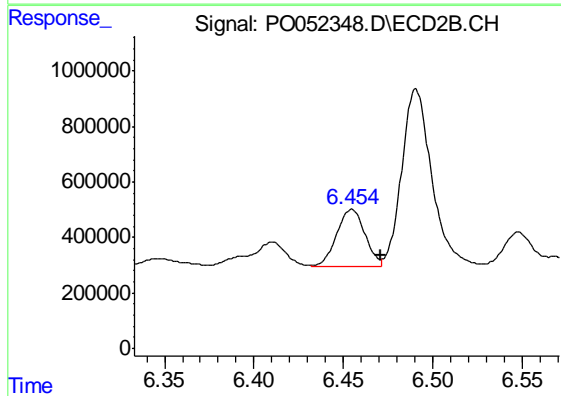
#34 AR-1260-4

R.T.: 7.841 min
 Delta R.T.: -0.025 min
 Response: 18667326
 Conc: 762.92 ng/ml m

Instrument :
 ECD_O
 ClientSampled :
 580K-14B

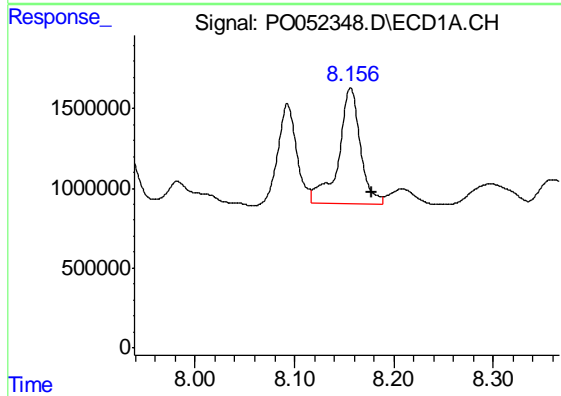
Manual Integrations
 APPROVED

Sohil
 12/10/2018 2:21:20 PM



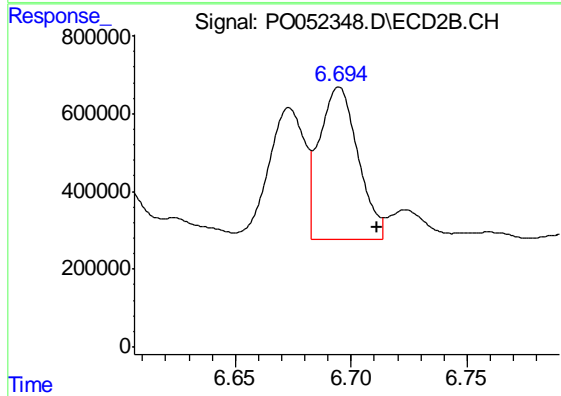
#34 AR-1260-4

R.T.: 6.455 min
 Delta R.T.: -0.016 min
 Response: 2290177
 Conc: 219.41 ng/ml



#35 AR-1260-5

R.T.: 8.156 min
 Delta R.T.: -0.021 min
 Response: 11160208
 Conc: 227.14 ng/ml



#35 AR-1260-5

R.T.: 6.694 min
 Delta R.T.: -0.017 min
 Response: 4474485
 Conc: 185.05 ng/ml m