

Data Path : Z:\pestpcbsrv\HPCHEM1\ECD\_0\Data\PO121019\  
 Data File : PO064489.D  
 Signal(s) : Signal #1: ECD1A.CH Signal #2: ECD2B.CH  
 Acq On : 10 Dec 2019 10:04  
 Operator : SM/AJ  
 Sample : K6188-05MS  
 Misc :  
 ALS Vial : 4 Sample Multiplier: 1

Instrument :  
 ECD\_0  
 ClientSampled :  
 SOIL-COMP-2MS

Integration File signal 1: autoint1.e  
 Integration File signal 2: autoint2.e  
 Quant Time: Dec 10 11:13:21 2019  
 Quant Method : Z:\pestpcbsrv\HPCHEM1\ECD\_0\methods\PO112719.M  
 Quant Title : GC EXTRACTABLES  
 QLast Update : Thu Nov 28 01:28:08 2019  
 Response via : Initial Calibration  
 Integrator: ChemStation 6890 Scale Mode: Small noise peaks clipped

Volume Inj. : 2 µl  
 Signal #1 Phase : ZB-MR1 Signal #2 Phase: ZB-MR2  
 Signal #1 Info : 30Mx0.32mmx 0.50µ Signal #2 Info : 30M x 0.32mm x 0.25µm

Compound	RT#1	RT#2	Resp#1	Resp#2	ng/ml	ng/ml
System Monitoring Compounds						
1) SA Tetrachlo...	4.315	3.563	506253	396363	17.094	16.664
2) SA Decachlor...	9.941	8.521	773846	825005	18.882	20.196
Target Compounds						
3) L1 AR-1016-1	5.476	4.638	259258	213067	199.714	203.501
4) L1 AR-1016-2	5.498	4.657	361161	284485	198.102	201.667
5) L1 AR-1016-3	5.559	4.831	219133	155234	190.926	201.544
6) L1 AR-1016-4	5.658	4.872	181632	136466	193.138	209.780
7) L1 AR-1016-5	5.950	5.083	193608	177909	198.957	213.699
8) L2 AR-1221-1	4.518	3.773	23829	14892	67.076	56.922
9) L2 AR-1221-2	4.610	3.860	32311	22560	116.861	112.882
10) L2 AR-1221-3	4.686	3.935	114995	84019	136.951	129.932
11) L3 AR-1232-1	4.686	3.935	114995	84019	89.694	82.965
12) L3 AR-1232-2	5.209	4.657	184669	284485	262.863	260.947
13) L3 AR-1232-3	5.498	4.831	361161	155234	260.800	267.021
14) L3 AR-1232-4	5.658	4.913	181632	164829	255.287	310.480
15) L3 AR-1232-5	5.747	5.083	171238	177909	304.038	303.847
16) L4 AR-1242-1	5.476	4.638	259258	213067	272.274	278.257
17) L4 AR-1242-2	5.498	4.657	361161	284485	267.409	275.351
18) L4 AR-1242-3	5.559	4.831	219133	155234	255.363	276.997
19) L4 AR-1242-4	5.658	4.913	181632	164829	259.767	290.613
20) L4 AR-1242-5	6.390	5.432	44180	137045	52.295	174.624 #
21) L5 AR-1248-1	5.476	4.638	259258	213067	462.214	474.495
22) L5 AR-1248-2	5.747	4.872	171238	136466	206.635	217.029
23) L5 AR-1248-3	5.950	4.913	193608	164829	210.473	255.458
24) L5 AR-1248-4	6.351	5.083	44741	177909	40.365	225.698 #
25) L5 AR-1248-5	6.390	5.432	44180	137045	41.175	113.114 #
26) L6 AR-1254-1	6.324	5.432	154991	137045	94.963	69.730 #
27) L6 AR-1254-2	6.542	5.578	170622	135289	65.451	75.542
28) L6 AR-1254-3	6.908	5.995	94734	281957	32.822	91.106 #
29) L6 AR-1254-4	7.191	6.207	76850	43149	33.557	20.913 #
30) L6 AR-1254-5	7.607	6.623	587858	572254	230.058	189.727
31) L7 AR-1260-1	7.070	6.109	387489	402660	205.328	229.407
32) L7 AR-1260-2	7.326	6.296	490787	515128	209.855	231.542
33) L7 AR-1260-3	7.683	6.449	389115	463505	210.185	227.966
34) L7 AR-1260-4	7.907	6.918	469200	421617	214.091	227.316
35) L7 AR-1260-5	8.218	7.160	868985	1038015	196.827	214.403
36) L8 AR-1262-1	7.683	6.712	389115	228543	130.329	181.884 #
37) L8 AR-1262-2	8.218	7.160	868985	1038015	157.604	174.009
38) L8 AR-1262-3	8.532	7.441	598166	239710	154.595	102.825 #
39) L8 AR-1262-4	8.586	7.504	387419	763040	132.529	171.351 #
40) L8 AR-1262-5	9.231	7.997	328266	293253	156.400	138.849
41) L9 AR-1268-1	8.532	7.441	598166	239710	91.745	34.333 #

Data Path : Z:\pestpcbsrv\HPCHEM1\ECD\_0\Data\PO121019\  
 Data File : PO064489.D  
 Signal(s) : Signal #1: ECD1A.CH Signal #2: ECD2B.CH  
 Acq On : 10 Dec 2019 10:04  
 Operator : SM/AJ  
 Sample : K6188-05MS  
 Misc :  
 ALS Vial : 4 Sample Multiplier: 1

Instrument :  
 ECD\_0  
 ClientSampleId :  
 SOIL-COMP-2MS

Integration File signal 1: autoint1.e  
 Integration File signal 2: autoint2.e  
 Quant Time: Dec 10 11:13:21 2019  
 Quant Method : Z:\pestpcbsrv\HPCHEM1\ECD\_0\methods\PO112719.M  
 Quant Title : GC EXTRACTABLES  
 QLast Update : Thu Nov 28 01:28:08 2019  
 Response via : Initial Calibration  
 Integrator: ChemStation 6890 Scale Mode: Small noise peaks clipped

Volume Inj. : 2 µl  
 Signal #1 Phase : ZB-MR1 Signal #2 Phase: ZB-MR2  
 Signal #1 Info : 30Mx0.32mmx 0.50µ Signal #2 Info : 30M x 0.32mm x 0.25µm

	Compound	RT#1	RT#2	Resp#1	Resp#2	ng/ml	ng/ml
42)	L9 AR-1268-2	8.586	7.504	387419	763040	64.126	119.178 #
43)	L9 AR-1268-3	8.822	7.711	27463	10958	5.531	2.092 #
44)	L9 AR-1268-4	9.231	7.997	328266	293253	140.304	125.526
45)	L9 AR-1268-5	9.623	8.276	76137	71679	4.956	4.340

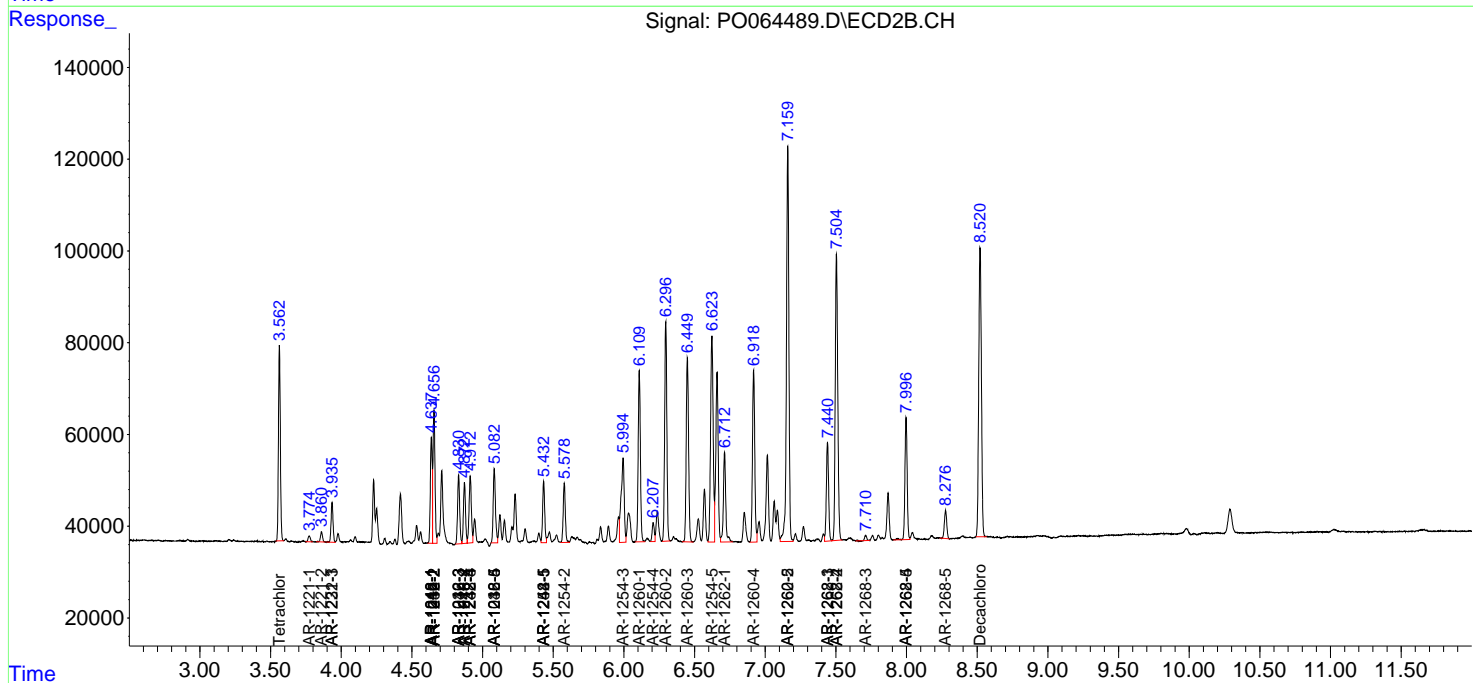
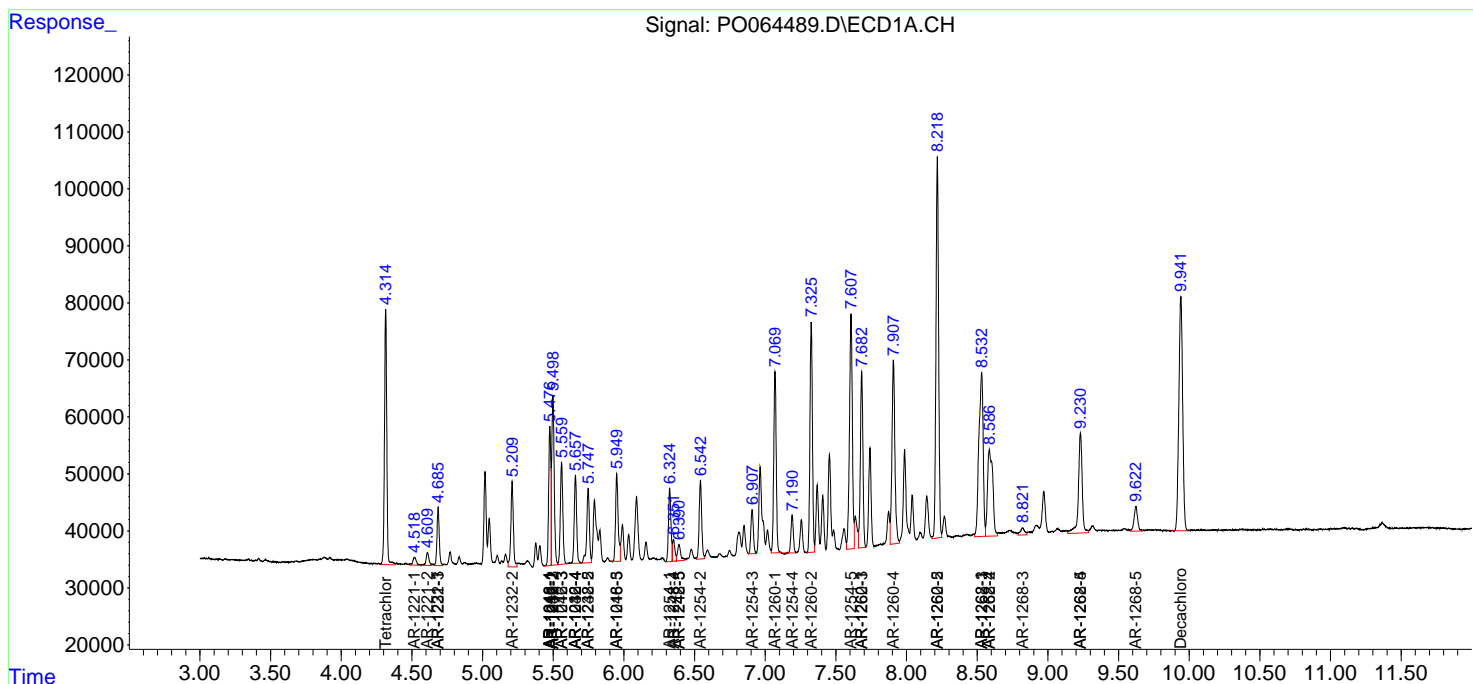
(f)=RT Delta > 1/2 Window (#)=Amounts differ by > 25% (m)=manual int.

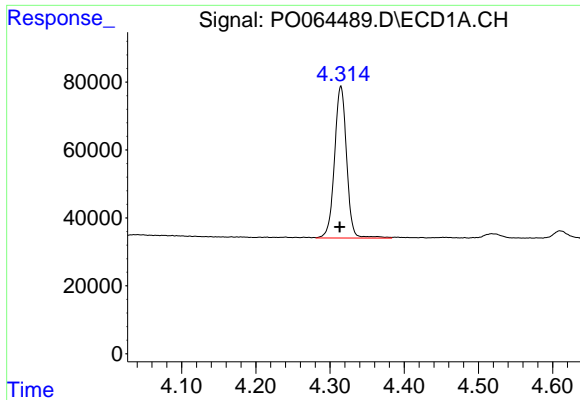
Data Path : Z:\pestpcbsrv\HPCHEM1\ECD\_0\Data\PO121019\  
 Data File : P0064489.D  
 Signal(s) : Signal #1: ECD1A.CH Signal #2: ECD2B.CH  
 Acq On : 10 Dec 2019 10:04  
 Operator : SM/AJ  
 Sample : K6188-05MS  
 Misc :  
 ALS Vial : 4 Sample Multiplier: 1

Instrument :  
 ECD\_O  
 ClientSampled :  
 SOIL-COMP-2MS

Integration File signal 1: autoint1.e  
 Integration File signal 2: autoint2.e  
 Quant Time: Dec 10 11:13:21 2019  
 Quant Method : Z:\pestpcbsrv\HPCHEM1\ECD\_0\methods\PO112719.M  
 Quant Title : GC EXTRACTABLES  
 QLast Update : Thu Nov 28 01:28:08 2019  
 Response via : Initial Calibration  
 Integrator: ChemStation 6890 Scale Mode: Small noise peaks clipped

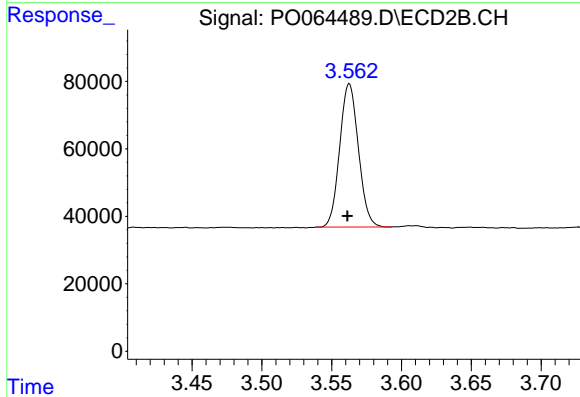
Volume Inj. : 2 µl  
 Signal #1 Phase : ZB-MR1 Signal #2 Phase: ZB-MR2  
 Signal #1 Info : 30Mx0.32mmx 0.50µ Signal #2 Info : 30M x 0.32mm x 0.25µm



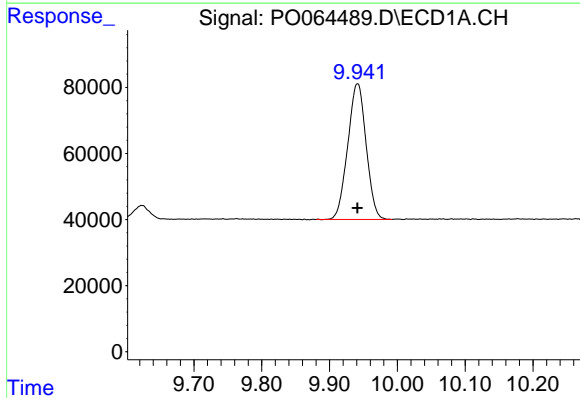


#1 Tetrachloro-m-xylene  
 R.T.: 4.315 min  
 Delta R.T.: 0.002 min  
 Response: 506253  
 Conc: 17.09 ng/ml

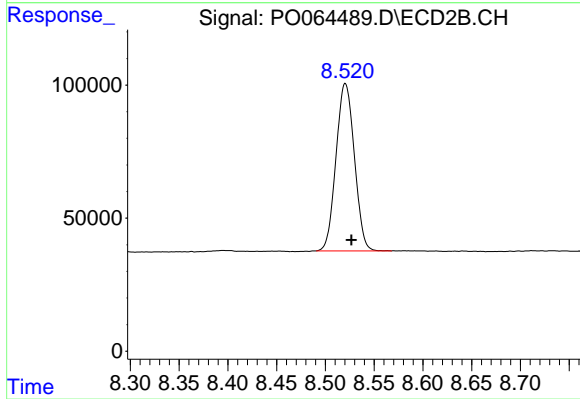
Instrument :  
 ECD\_O  
 ClientSampleId :  
 SOIL-COMP-2MS



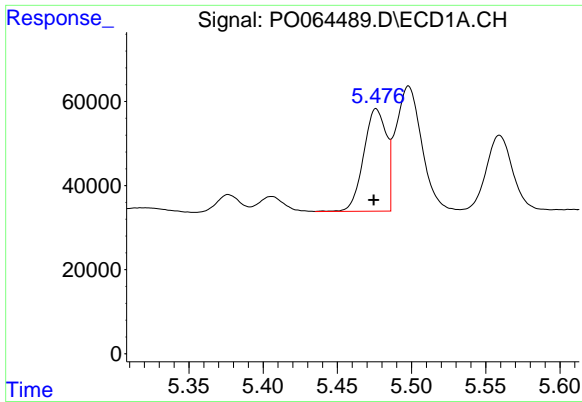
#1 Tetrachloro-m-xylene  
 R.T.: 3.563 min  
 Delta R.T.: 0.001 min  
 Response: 396363  
 Conc: 16.66 ng/ml



#2 Decachlorobiphenyl  
 R.T.: 9.941 min  
 Delta R.T.: 0.000 min  
 Response: 773846  
 Conc: 18.88 ng/ml



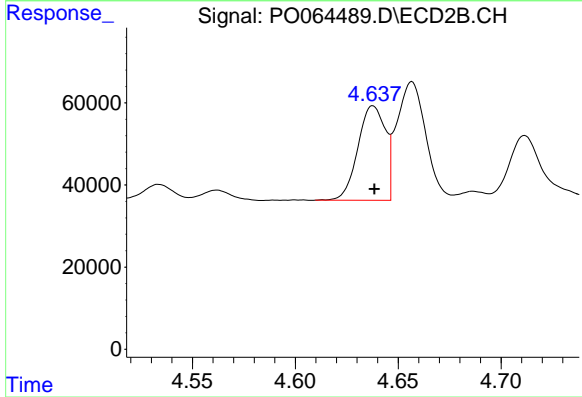
#2 Decachlorobiphenyl  
 R.T.: 8.521 min  
 Delta R.T.: -0.006 min  
 Response: 825005  
 Conc: 20.20 ng/ml



#3 AR-1016-1

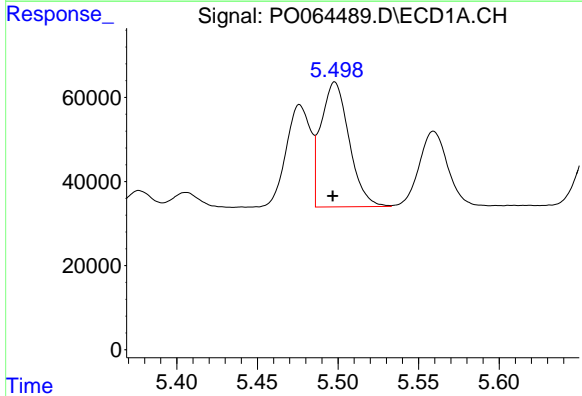
R.T.: 5.476 min  
 Delta R.T.: 0.002 min  
 Response: 259258  
 Conc: 199.71 ng/ml

Instrument :  
 ECD\_O  
 ClientSampleId :  
 SOIL-COMP-2MS



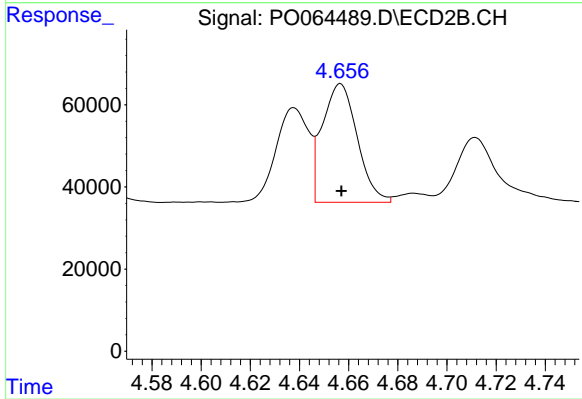
#3 AR-1016-1

R.T.: 4.638 min  
 Delta R.T.: 0.000 min  
 Response: 213067  
 Conc: 203.50 ng/ml



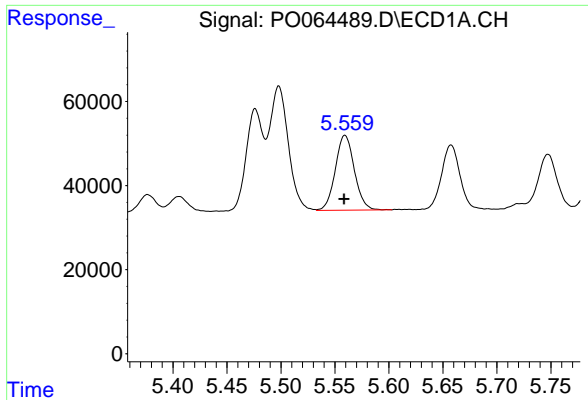
#4 AR-1016-2

R.T.: 5.498 min  
 Delta R.T.: 0.001 min  
 Response: 361161  
 Conc: 198.10 ng/ml



#4 AR-1016-2

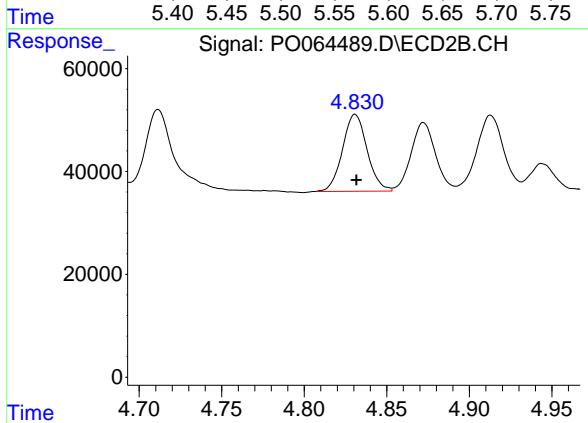
R.T.: 4.657 min  
 Delta R.T.: 0.000 min  
 Response: 284485  
 Conc: 201.67 ng/ml



#5 AR-1016-3

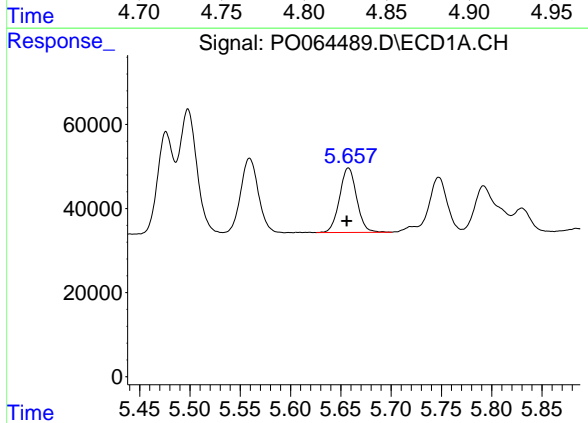
R.T.: 5.559 min  
 Delta R.T.: 0.000 min  
 Response: 219133  
 Conc: 190.93 ng/ml

Instrument :  
 ECD\_O  
 ClientSampleId :  
 SOIL-COMP-2MS



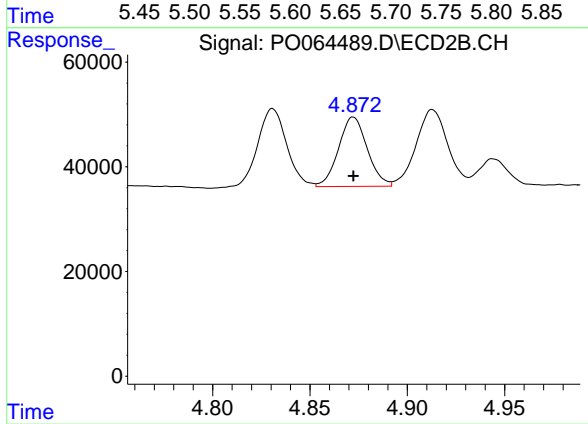
#5 AR-1016-3

R.T.: 4.831 min  
 Delta R.T.: 0.000 min  
 Response: 155234  
 Conc: 201.54 ng/ml



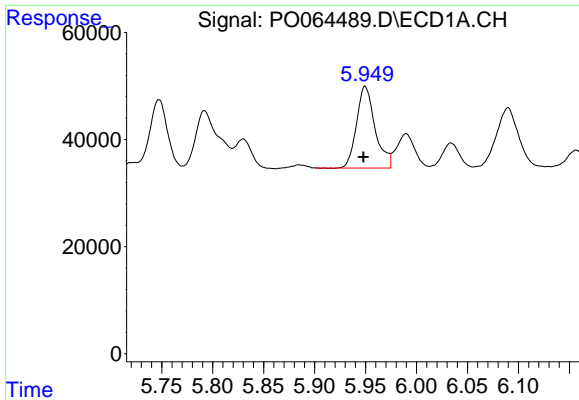
#6 AR-1016-4

R.T.: 5.658 min  
 Delta R.T.: 0.002 min  
 Response: 181632  
 Conc: 193.14 ng/ml



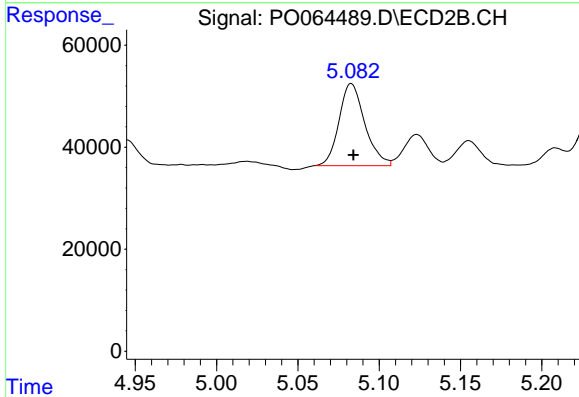
#6 AR-1016-4

R.T.: 4.872 min  
 Delta R.T.: 0.000 min  
 Response: 136466  
 Conc: 209.78 ng/ml

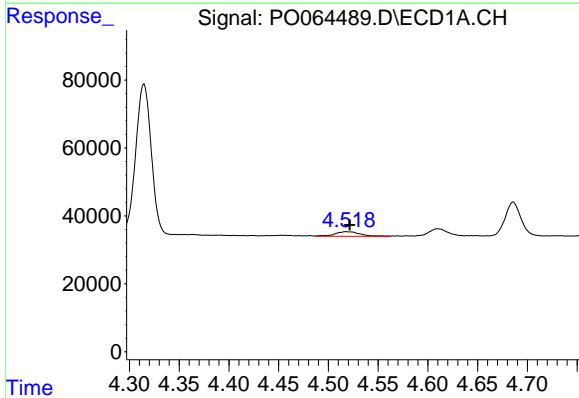


#7 AR-1016-5  
 R.T.: 5.950 min  
 Delta R.T.: 0.002 min  
 Response: 193608  
 Conc: 198.96 ng/ml

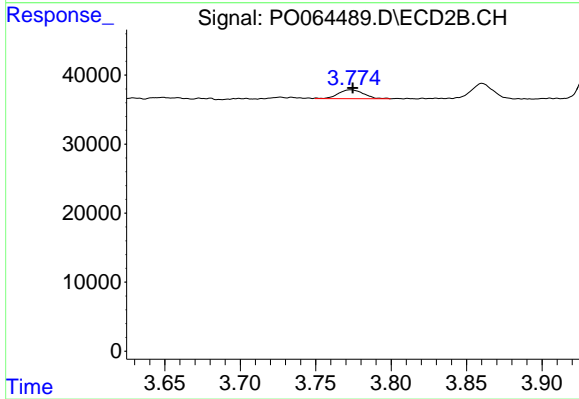
**Instrument :**  
 ECD\_O  
**ClientSampleId :**  
 SOIL-COMP-2MS



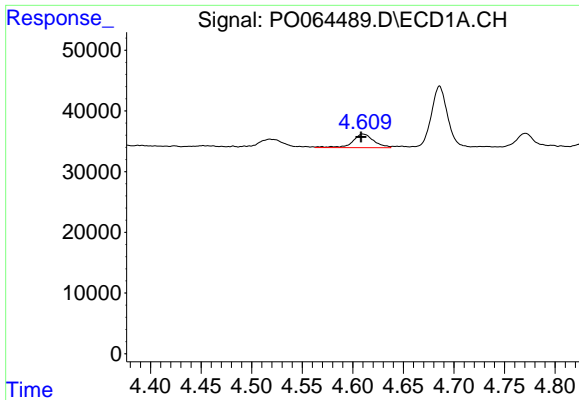
#7 AR-1016-5  
 R.T.: 5.083 min  
 Delta R.T.: -0.001 min  
 Response: 177909  
 Conc: 213.70 ng/ml



#8 AR-1221-1  
 R.T.: 4.518 min  
 Delta R.T.: -0.003 min  
 Response: 23829  
 Conc: 67.08 ng/ml

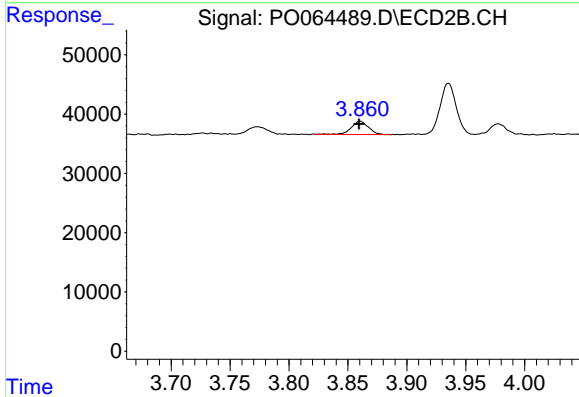


#8 AR-1221-1  
 R.T.: 3.773 min  
 Delta R.T.: -0.001 min  
 Response: 14892  
 Conc: 56.92 ng/ml

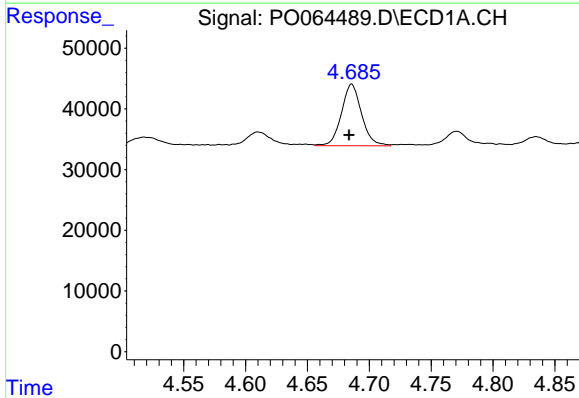


#9 AR-1221-2  
 R.T.: 4.610 min  
 Delta R.T.: 0.002 min  
 Response: 32311  
 Conc: 116.86 ng/ml

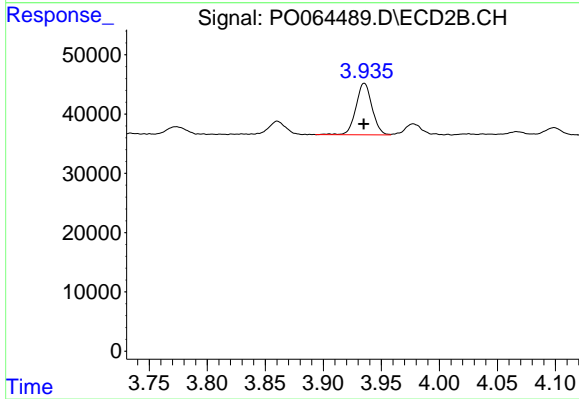
**Instrument :**  
 ECD\_O  
**ClientSampleId :**  
 SOIL-COMP-2MS



#9 AR-1221-2  
 R.T.: 3.860 min  
 Delta R.T.: 0.001 min  
 Response: 22560  
 Conc: 112.88 ng/ml

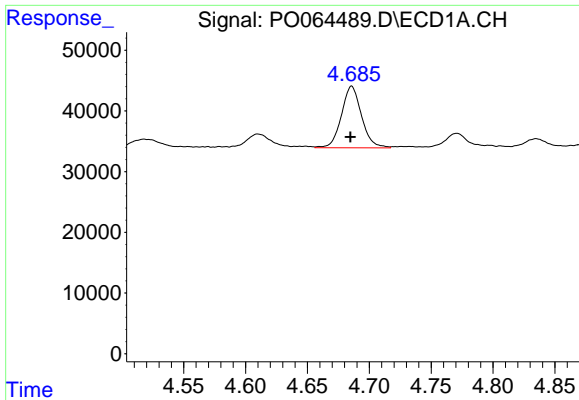


#10 AR-1221-3  
 R.T.: 4.686 min  
 Delta R.T.: 0.002 min  
 Response: 114995  
 Conc: 136.95 ng/ml



#10 AR-1221-3  
 R.T.: 3.935 min  
 Delta R.T.: 0.000 min  
 Response: 84019  
 Conc: 129.93 ng/ml

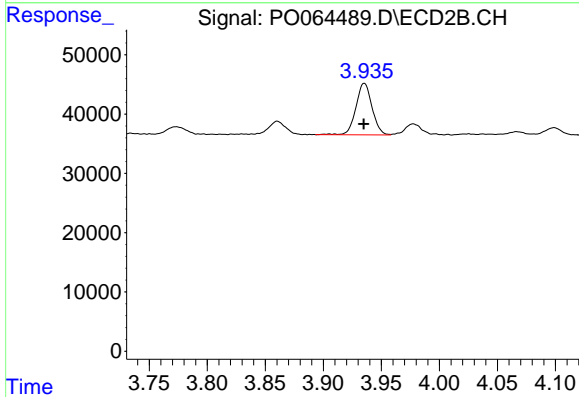




#11 AR-1232-1

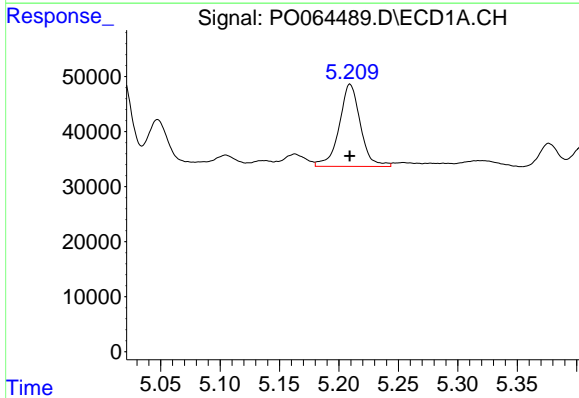
R.T.: 4.686 min  
 Delta R.T.: 0.001 min  
 Response: 114995  
 Conc: 89.69 ng/ml

Instrument :  
 ECD\_O  
 ClientSampleId :  
 SOIL-COMP-2MS



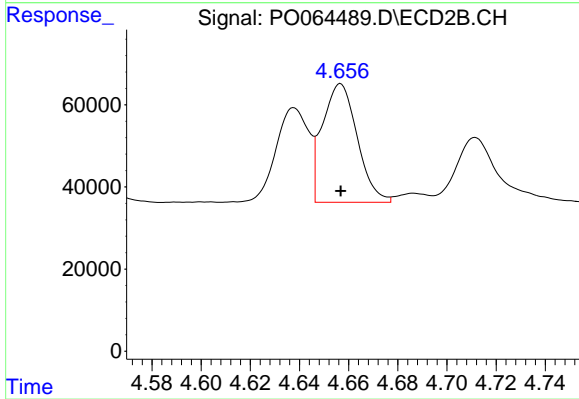
#11 AR-1232-1

R.T.: 3.935 min  
 Delta R.T.: 0.000 min  
 Response: 84019  
 Conc: 82.97 ng/ml



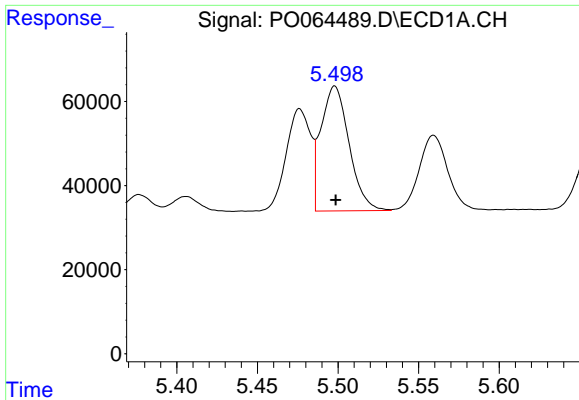
#12 AR-1232-2

R.T.: 5.209 min  
 Delta R.T.: 0.000 min  
 Response: 184669  
 Conc: 262.86 ng/ml



#12 AR-1232-2

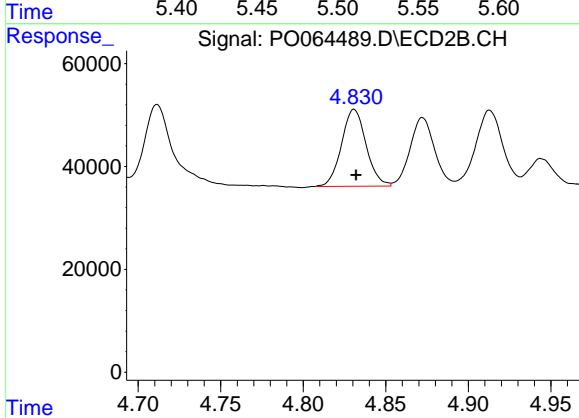
R.T.: 4.657 min  
 Delta R.T.: 0.000 min  
 Response: 284485  
 Conc: 260.95 ng/ml



#13 AR-1232-3

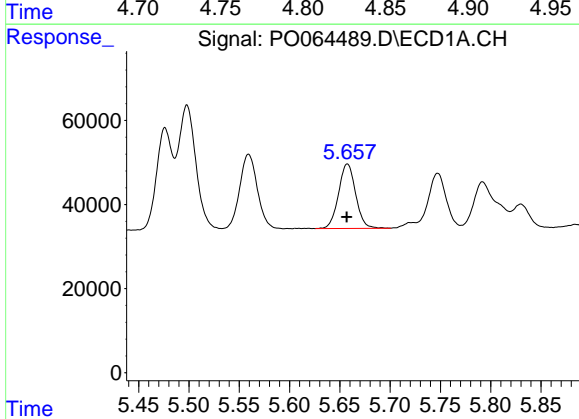
R.T.: 5.498 min  
 Delta R.T.: 0.000 min  
 Response: 361161  
 Conc: 260.80 ng/ml

**Instrument :**  
 ECD\_O  
**ClientSampleId :**  
 SOIL-COMP-2MS



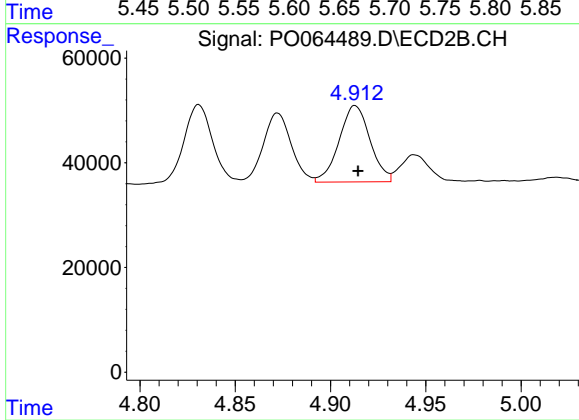
#13 AR-1232-3

R.T.: 4.831 min  
 Delta R.T.: 0.000 min  
 Response: 155234  
 Conc: 267.02 ng/ml



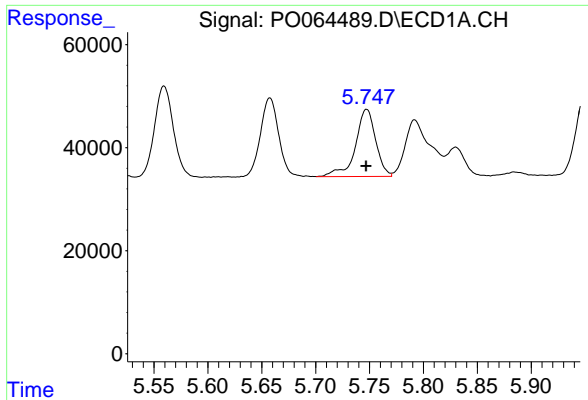
#14 AR-1232-4

R.T.: 5.658 min  
 Delta R.T.: 0.000 min  
 Response: 181632  
 Conc: 255.29 ng/ml



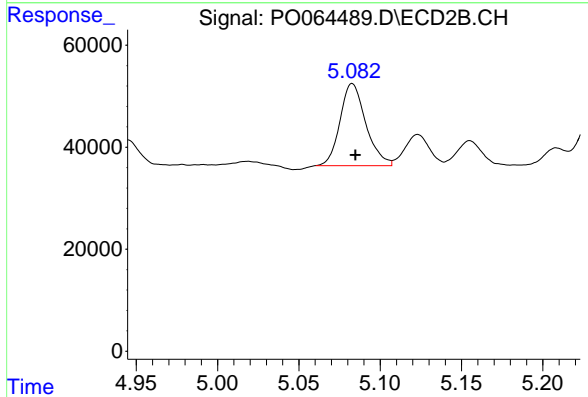
#14 AR-1232-4

R.T.: 4.913 min  
 Delta R.T.: -0.001 min  
 Response: 164829  
 Conc: 310.48 ng/ml

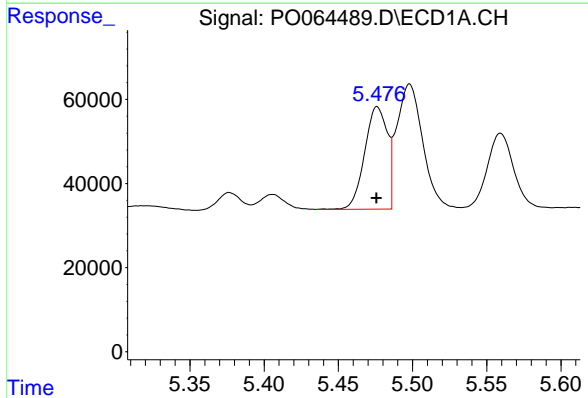


#15 AR-1232-5  
 R.T.: 5.747 min  
 Delta R.T.: 0.000 min  
 Response: 171238  
 Conc: 304.04 ng/ml

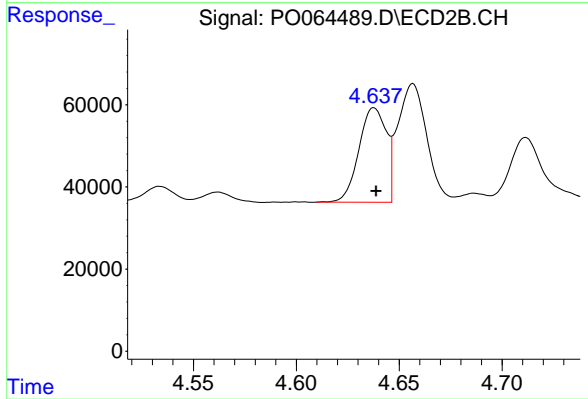
**Instrument :**  
 ECD\_O  
**ClientSampleId :**  
 SOIL-COMP-2MS



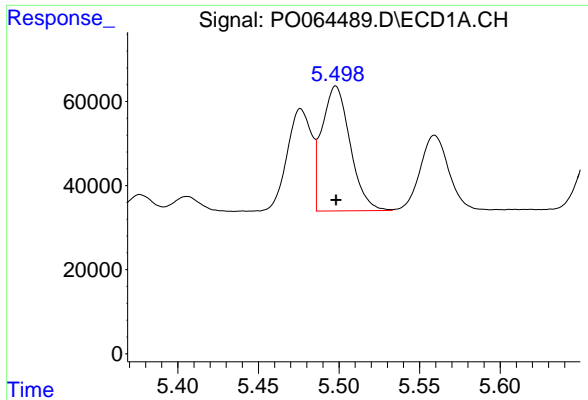
#15 AR-1232-5  
 R.T.: 5.083 min  
 Delta R.T.: -0.002 min  
 Response: 177909  
 Conc: 303.85 ng/ml



#16 AR-1242-1  
 R.T.: 5.476 min  
 Delta R.T.: 0.000 min  
 Response: 259258  
 Conc: 272.27 ng/ml



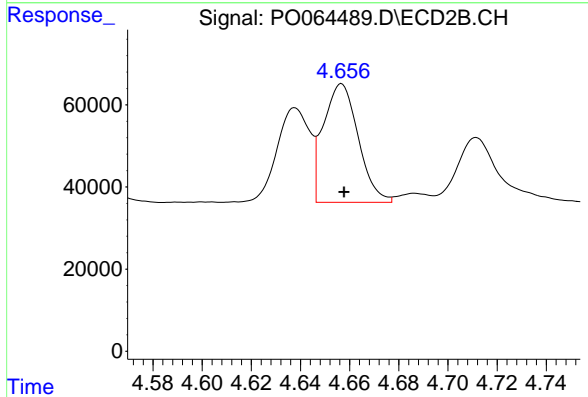
#16 AR-1242-1  
 R.T.: 4.638 min  
 Delta R.T.: 0.000 min  
 Response: 213067  
 Conc: 278.26 ng/ml



#17 AR-1242-2

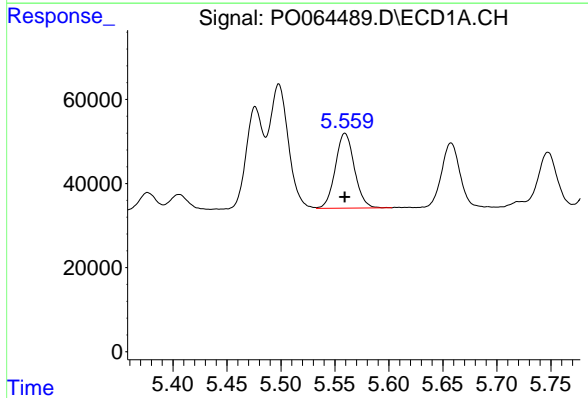
R.T.: 5.498 min  
 Delta R.T.: 0.000 min  
 Response: 361161  
 Conc: 267.41 ng/ml

Instrument :  
 ECD\_O  
 ClientSampleId :  
 SOIL-COMP-2MS



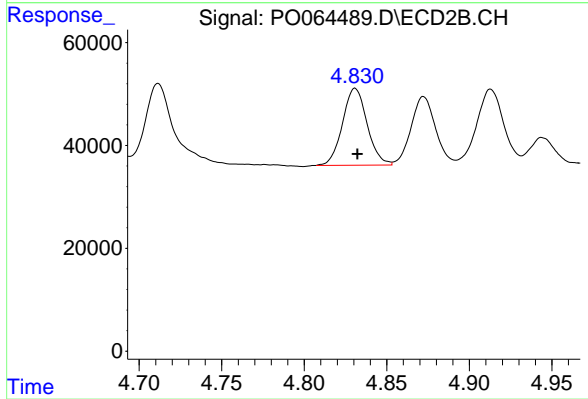
#17 AR-1242-2

R.T.: 4.657 min  
 Delta R.T.: -0.001 min  
 Response: 284485  
 Conc: 275.35 ng/ml



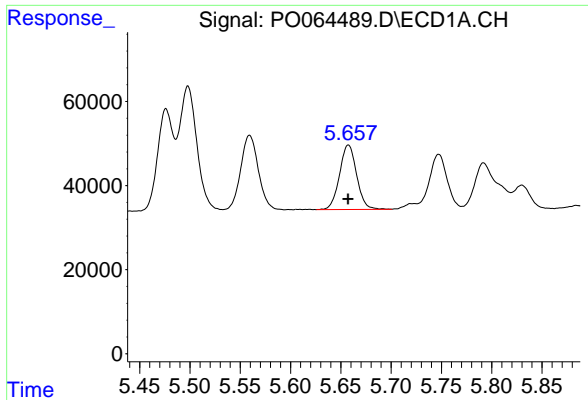
#18 AR-1242-3

R.T.: 5.559 min  
 Delta R.T.: 0.000 min  
 Response: 219133  
 Conc: 255.36 ng/ml



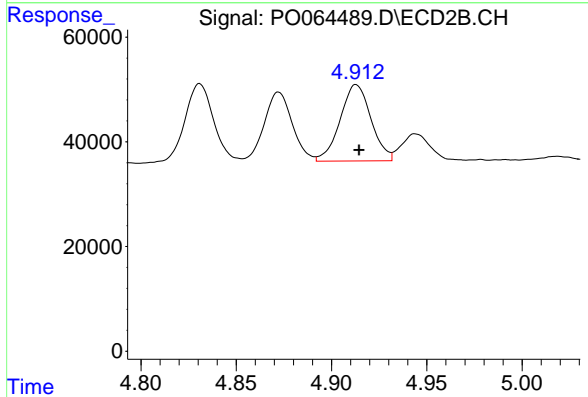
#18 AR-1242-3

R.T.: 4.831 min  
 Delta R.T.: -0.001 min  
 Response: 155234  
 Conc: 277.00 ng/ml

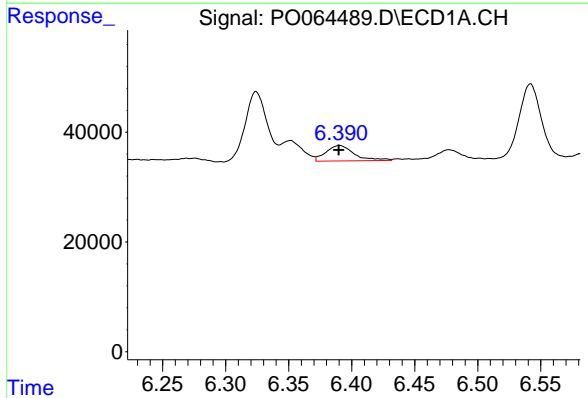


#19 AR-1242-4  
 R.T.: 5.658 min  
 Delta R.T.: 0.000 min  
 Response: 181632  
 Conc: 259.77 ng/ml

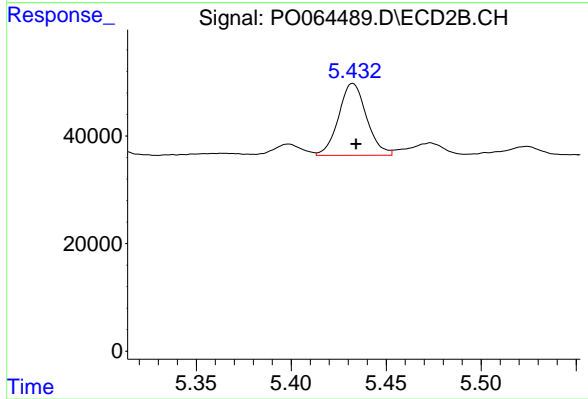
Instrument :  
 ECD\_O  
 ClientSampled :  
 SOIL-COMP-2MS



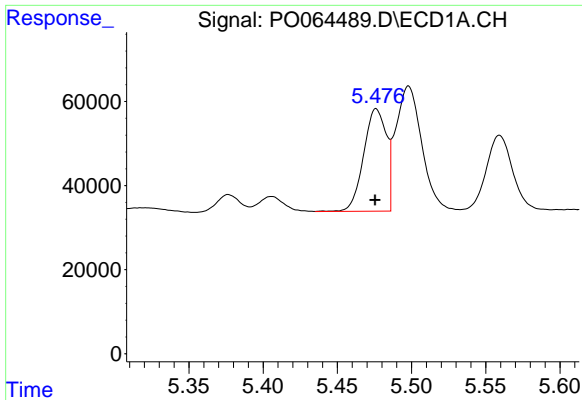
#19 AR-1242-4  
 R.T.: 4.913 min  
 Delta R.T.: -0.001 min  
 Response: 164829  
 Conc: 290.61 ng/ml



#20 AR-1242-5  
 R.T.: 6.390 min  
 Delta R.T.: 0.000 min  
 Response: 44180  
 Conc: 52.29 ng/ml



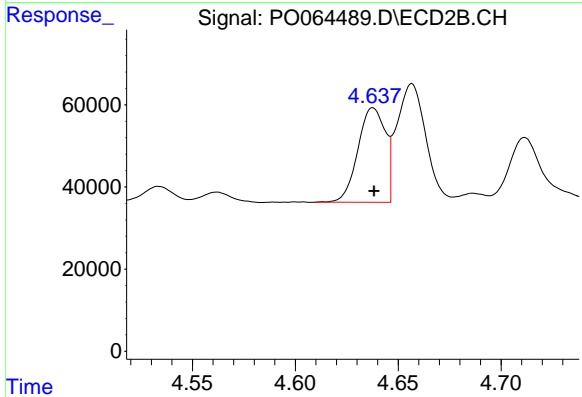
#20 AR-1242-5  
 R.T.: 5.432 min  
 Delta R.T.: -0.002 min  
 Response: 137045  
 Conc: 174.62 ng/ml



#21 AR-1248-1

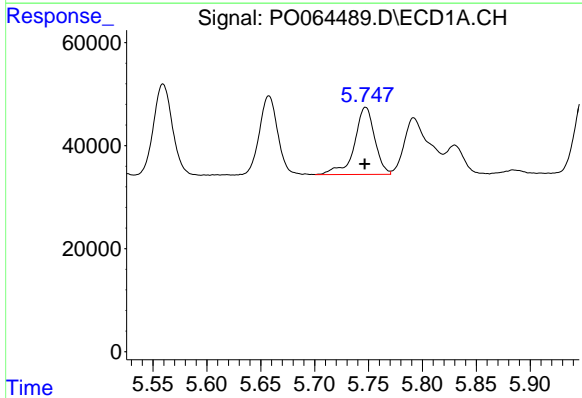
R.T.: 5.476 min  
 Delta R.T.: 0.000 min  
 Response: 259258  
 Conc: 462.21 ng/ml

Instrument :  
 ECD\_O  
 ClientSampleId :  
 SOIL-COMP-2MS



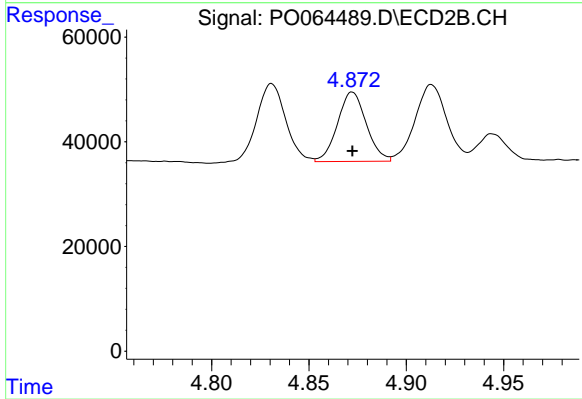
#21 AR-1248-1

R.T.: 4.638 min  
 Delta R.T.: 0.000 min  
 Response: 213067  
 Conc: 474.49 ng/ml



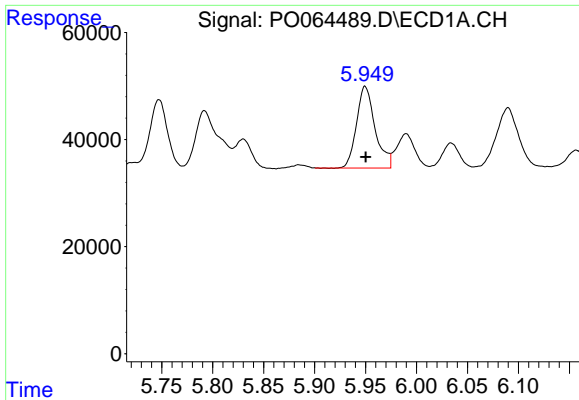
#22 AR-1248-2

R.T.: 5.747 min  
 Delta R.T.: 0.000 min  
 Response: 171238  
 Conc: 206.63 ng/ml



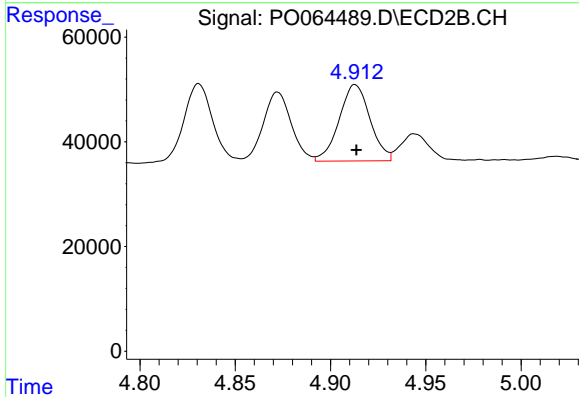
#22 AR-1248-2

R.T.: 4.872 min  
 Delta R.T.: 0.000 min  
 Response: 136466  
 Conc: 217.03 ng/ml

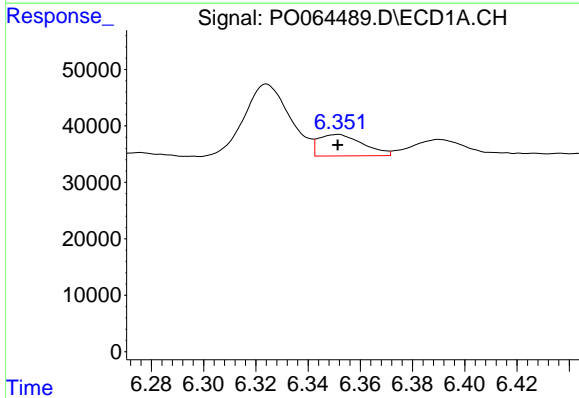


#23 AR-1248-3  
 R.T.: 5.950 min  
 Delta R.T.: 0.000 min  
 Response: 193608  
 Conc: 210.47 ng/ml

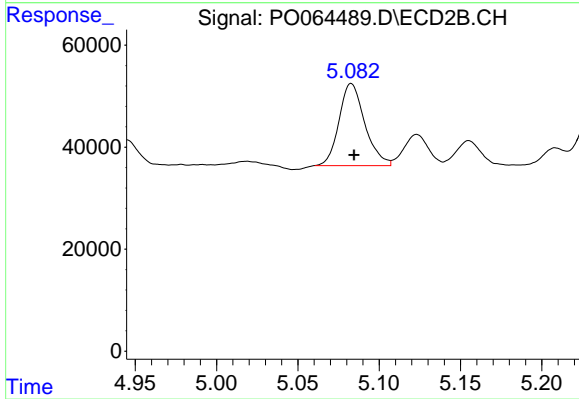
**Instrument :**  
 ECD\_O  
**ClientSampleId :**  
 SOIL-COMP-2MS



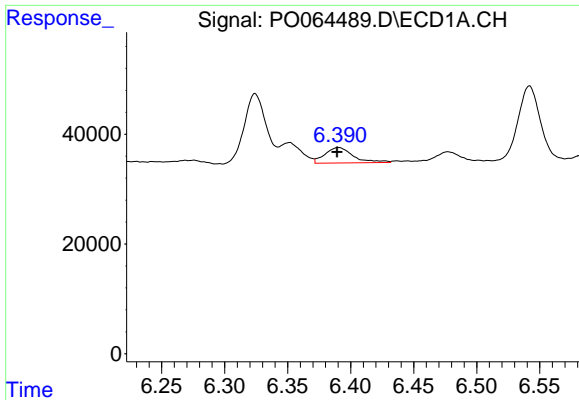
#23 AR-1248-3  
 R.T.: 4.913 min  
 Delta R.T.: 0.000 min  
 Response: 164829  
 Conc: 255.46 ng/ml



#24 AR-1248-4  
 R.T.: 6.351 min  
 Delta R.T.: 0.000 min  
 Response: 44741  
 Conc: 40.37 ng/ml

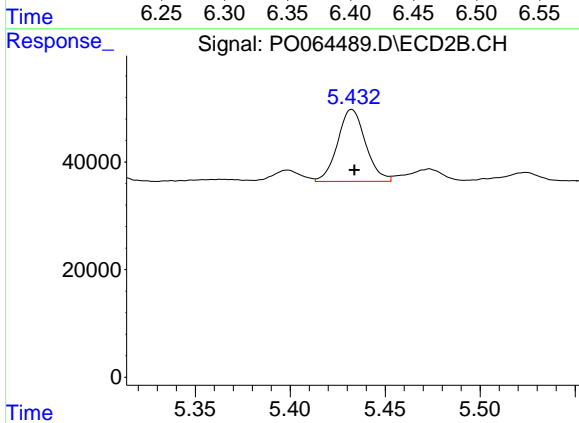


#24 AR-1248-4  
 R.T.: 5.083 min  
 Delta R.T.: -0.002 min  
 Response: 177909  
 Conc: 225.70 ng/ml

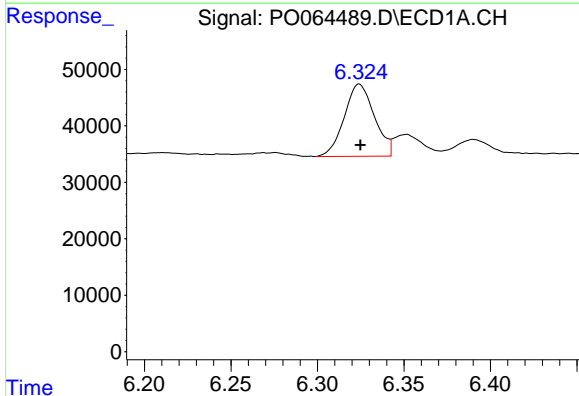


#25 AR-1248-5  
 R.T.: 6.390 min  
 Delta R.T.: 0.001 min  
 Response: 44180  
 Conc: 41.17 ng/ml

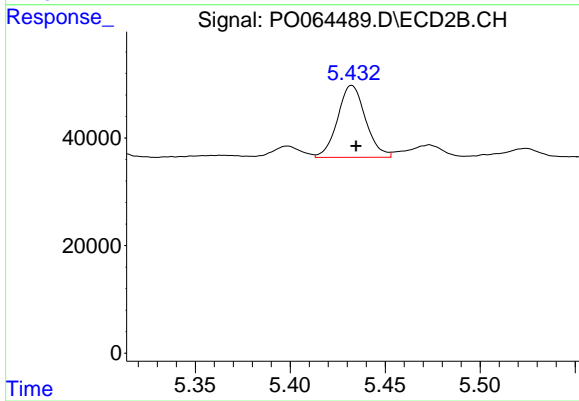
**Instrument :**  
 ECD\_O  
**ClientSampleId :**  
 SOIL-COMP-2MS



#25 AR-1248-5  
 R.T.: 5.432 min  
 Delta R.T.: -0.001 min  
 Response: 137045  
 Conc: 113.11 ng/ml

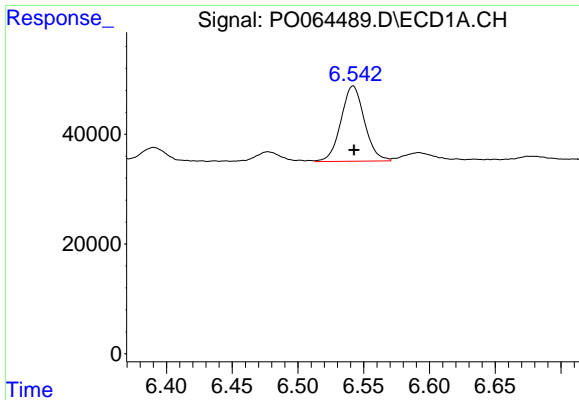


#26 AR-1254-1  
 R.T.: 6.324 min  
 Delta R.T.: 0.000 min  
 Response: 154991  
 Conc: 94.96 ng/ml



#26 AR-1254-1  
 R.T.: 5.432 min  
 Delta R.T.: -0.002 min  
 Response: 137045  
 Conc: 69.73 ng/ml

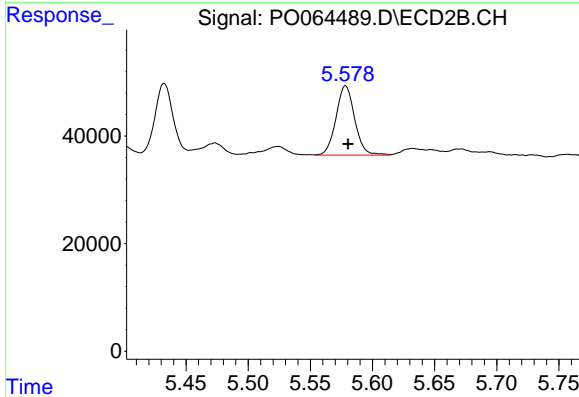




#27 AR-1254-2

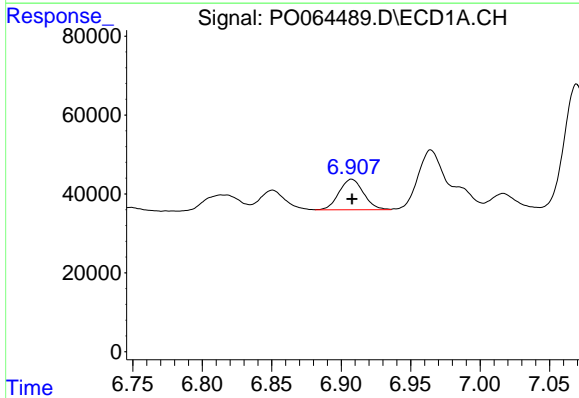
R.T.: 6.542 min  
 Delta R.T.: 0.000 min  
 Response: 170622  
 Conc: 65.45 ng/ml

Instrument :  
 ECD\_O  
 ClientSampleId :  
 SOIL-COMP-2MS



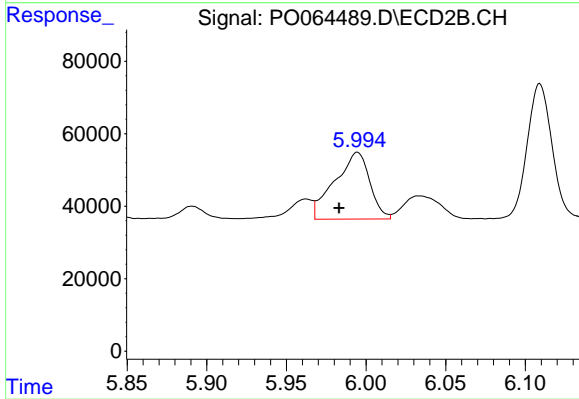
#27 AR-1254-2

R.T.: 5.578 min  
 Delta R.T.: -0.002 min  
 Response: 135289  
 Conc: 75.54 ng/ml



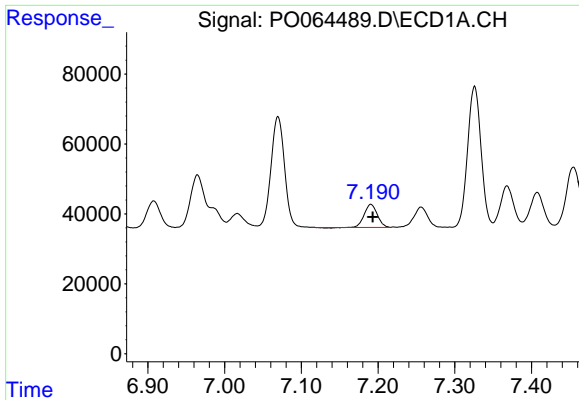
#28 AR-1254-3

R.T.: 6.908 min  
 Delta R.T.: 0.000 min  
 Response: 94734  
 Conc: 32.82 ng/ml



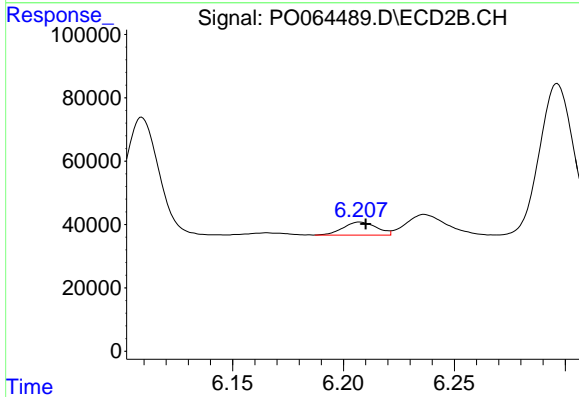
#28 AR-1254-3

R.T.: 5.995 min  
 Delta R.T.: 0.012 min  
 Response: 281957  
 Conc: 91.11 ng/ml

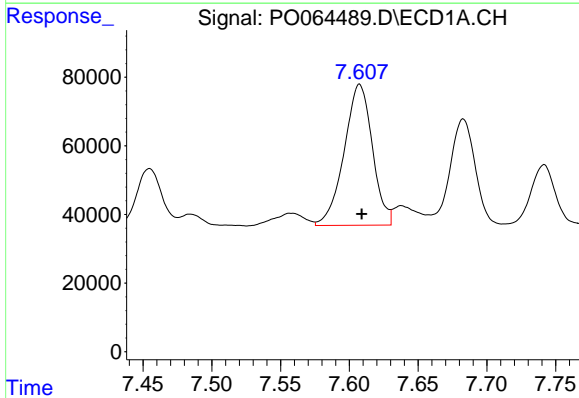


#29 AR-1254-4  
 R.T.: 7.191 min  
 Delta R.T.: -0.002 min  
 Response: 76850  
 Conc: 33.56 ng/ml

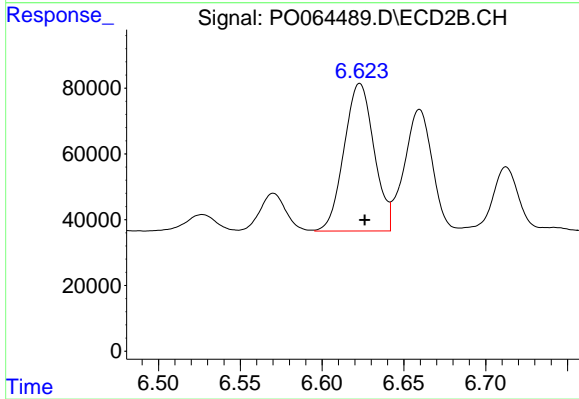
Instrument :  
 ECD\_O  
 ClientSampleId :  
 SOIL-COMP-2MS



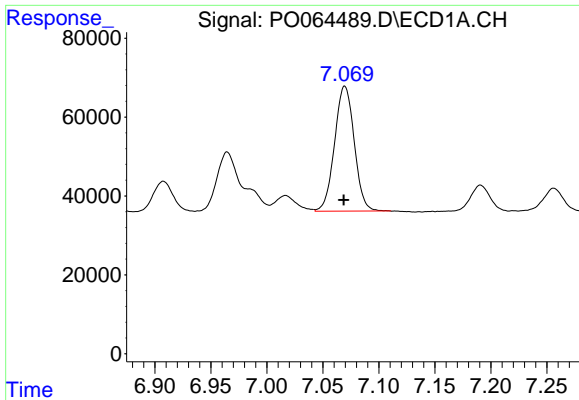
#29 AR-1254-4  
 R.T.: 6.207 min  
 Delta R.T.: -0.003 min  
 Response: 43149  
 Conc: 20.91 ng/ml



#30 AR-1254-5  
 R.T.: 7.607 min  
 Delta R.T.: -0.002 min  
 Response: 587858  
 Conc: 230.06 ng/ml

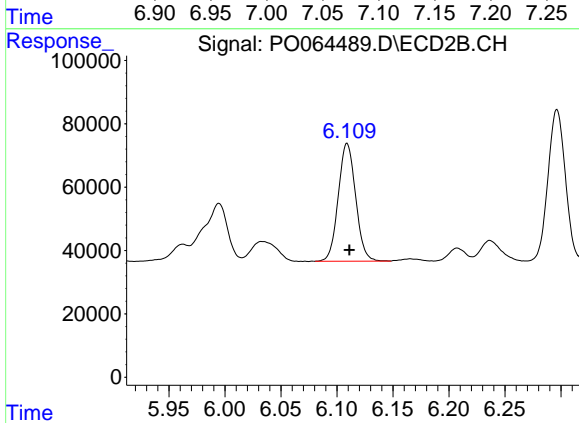


#30 AR-1254-5  
 R.T.: 6.623 min  
 Delta R.T.: -0.003 min  
 Response: 572254  
 Conc: 189.73 ng/ml

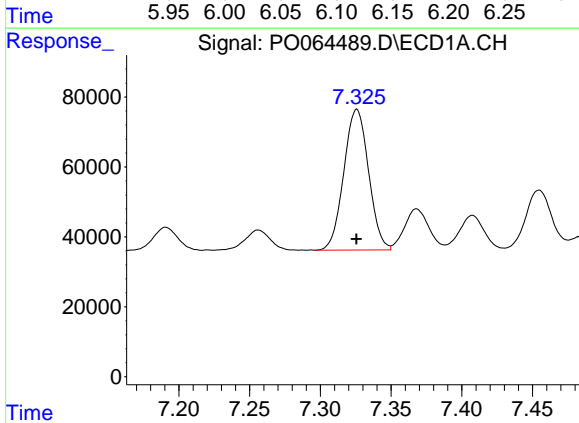


#31 AR-1260-1  
 R.T.: 7.070 min  
 Delta R.T.: 0.000 min  
 Response: 387489  
 Conc: 205.33 ng/ml

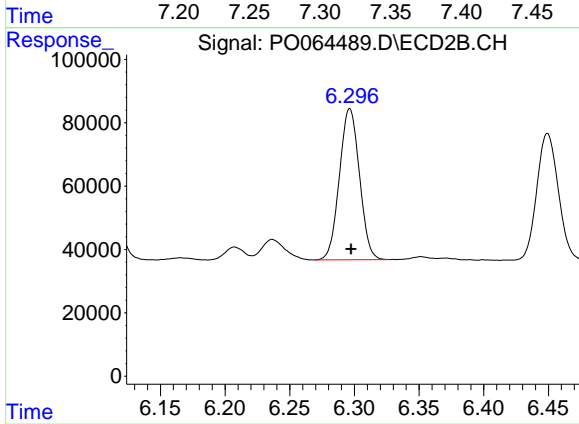
Instrument :  
 ECD\_O  
 ClientSampleId :  
 SOIL-COMP-2MS



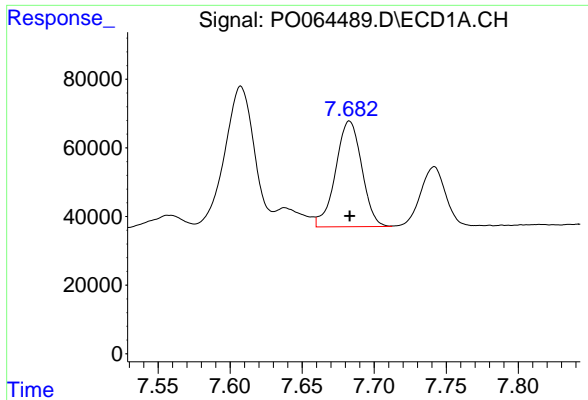
#31 AR-1260-1  
 R.T.: 6.109 min  
 Delta R.T.: -0.002 min  
 Response: 402660  
 Conc: 229.41 ng/ml



#32 AR-1260-2  
 R.T.: 7.326 min  
 Delta R.T.: 0.000 min  
 Response: 490787  
 Conc: 209.85 ng/ml



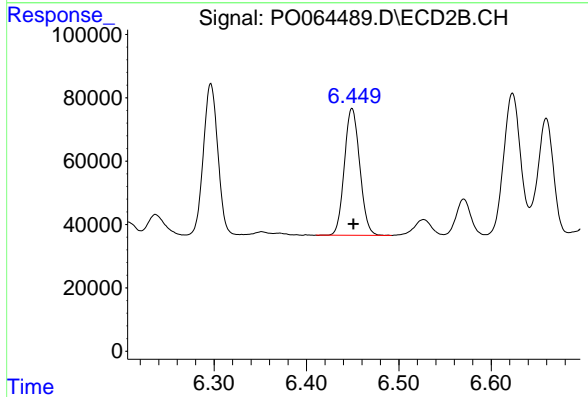
#32 AR-1260-2  
 R.T.: 6.296 min  
 Delta R.T.: 0.000 min  
 Response: 515128  
 Conc: 231.54 ng/ml



#33 AR-1260-3

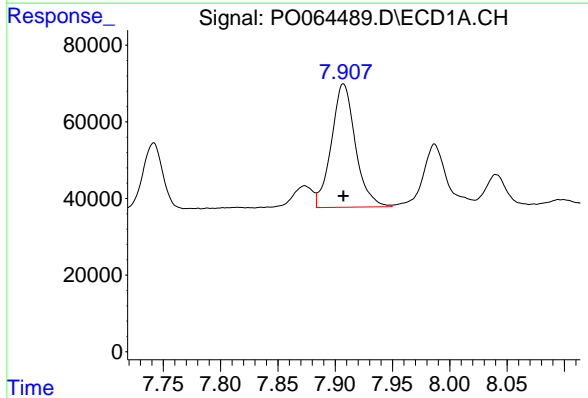
R.T.: 7.683 min  
 Delta R.T.: 0.000 min  
 Response: 389115  
 Conc: 210.18 ng/ml

Instrument :  
 ECD\_O  
 ClientSampleId :  
 SOIL-COMP-2MS



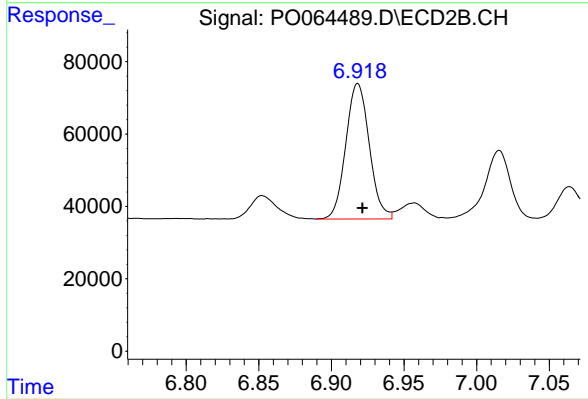
#33 AR-1260-3

R.T.: 6.449 min  
 Delta R.T.: -0.002 min  
 Response: 463505  
 Conc: 227.97 ng/ml



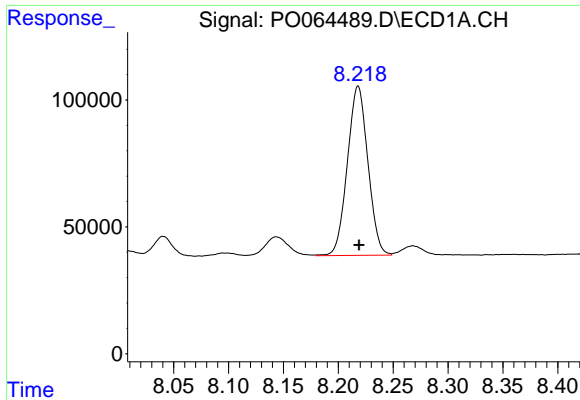
#34 AR-1260-4

R.T.: 7.907 min  
 Delta R.T.: 0.000 min  
 Response: 469200  
 Conc: 214.09 ng/ml



#34 AR-1260-4

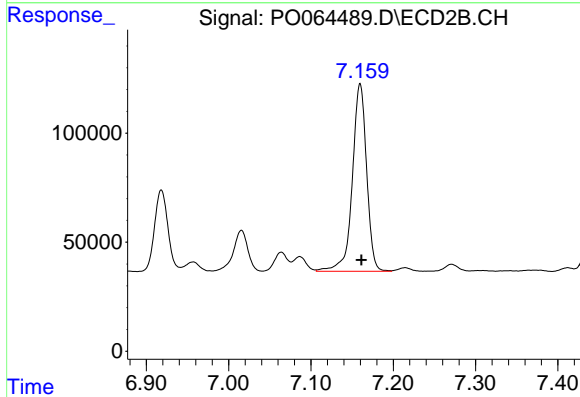
R.T.: 6.918 min  
 Delta R.T.: -0.003 min  
 Response: 421617  
 Conc: 227.32 ng/ml



#35 AR-1260-5

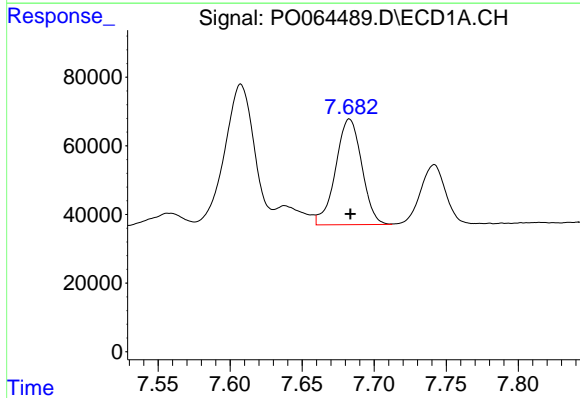
R.T.: 8.218 min  
 Delta R.T.: 0.000 min  
 Response: 868985  
 Conc: 196.83 ng/ml

Instrument :  
 ECD\_O  
 ClientSampleId :  
 SOIL-COMP-2MS



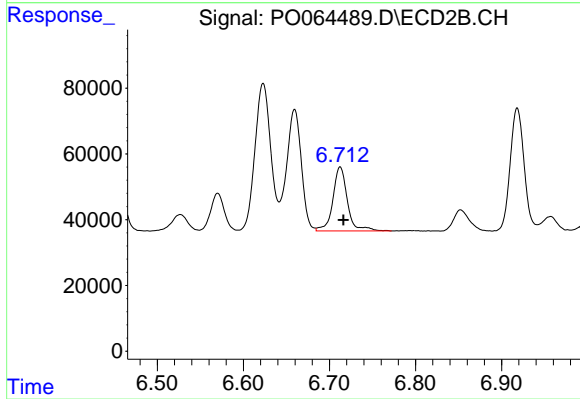
#35 AR-1260-5

R.T.: 7.160 min  
 Delta R.T.: -0.002 min  
 Response: 1038015  
 Conc: 214.40 ng/ml



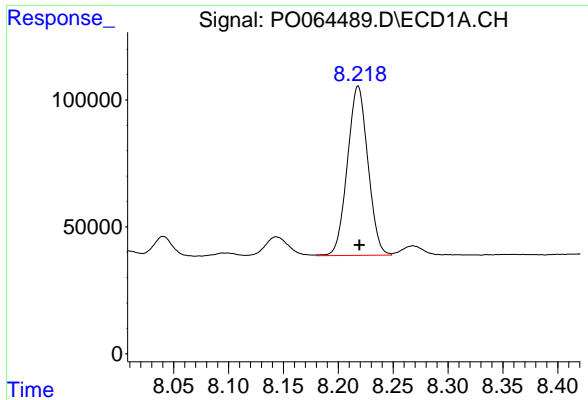
#36 AR-1262-1

R.T.: 7.683 min  
 Delta R.T.: 0.000 min  
 Response: 389115  
 Conc: 130.33 ng/ml



#36 AR-1262-1

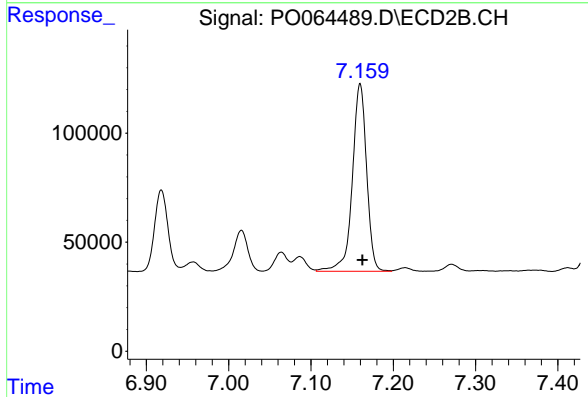
R.T.: 6.712 min  
 Delta R.T.: -0.004 min  
 Response: 228543  
 Conc: 181.88 ng/ml



#37 AR-1262-2

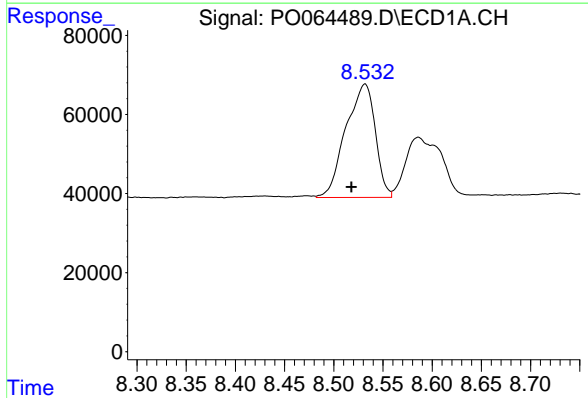
R.T.: 8.218 min  
 Delta R.T.: -0.001 min  
 Response: 868985  
 Conc: 157.60 ng/ml

Instrument :  
 ECD\_O  
 ClientSampleId :  
 SOIL-COMP-2MS



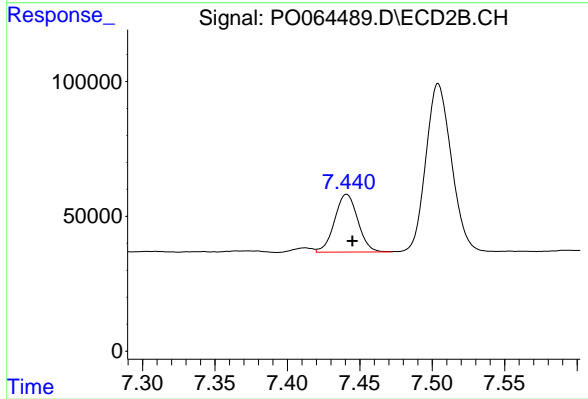
#37 AR-1262-2

R.T.: 7.160 min  
 Delta R.T.: -0.003 min  
 Response: 1038015  
 Conc: 174.01 ng/ml



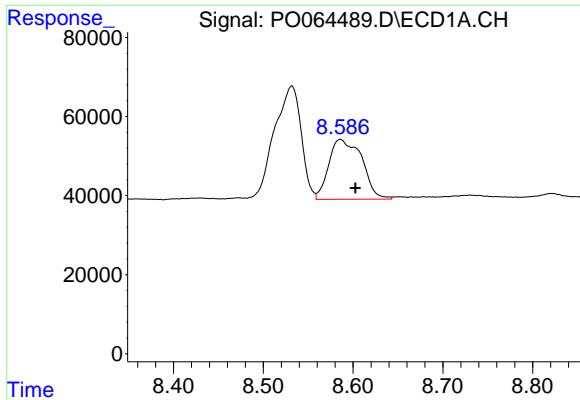
#38 AR-1262-3

R.T.: 8.532 min  
 Delta R.T.: 0.014 min  
 Response: 598166  
 Conc: 154.59 ng/ml



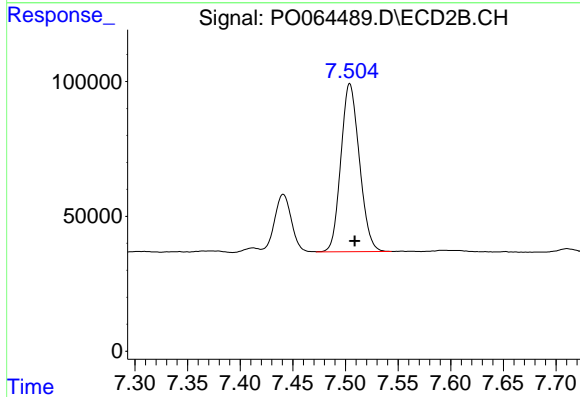
#38 AR-1262-3

R.T.: 7.441 min  
 Delta R.T.: -0.004 min  
 Response: 239710  
 Conc: 102.82 ng/ml

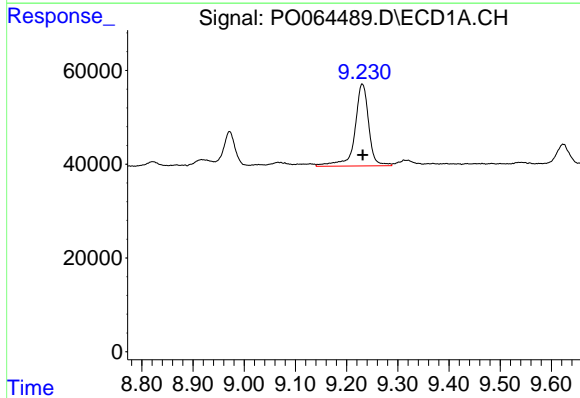


#39 AR-1262-4  
 R.T.: 8.586 min  
 Delta R.T.: -0.017 min  
 Response: 387419  
 Conc: 132.53 ng/ml

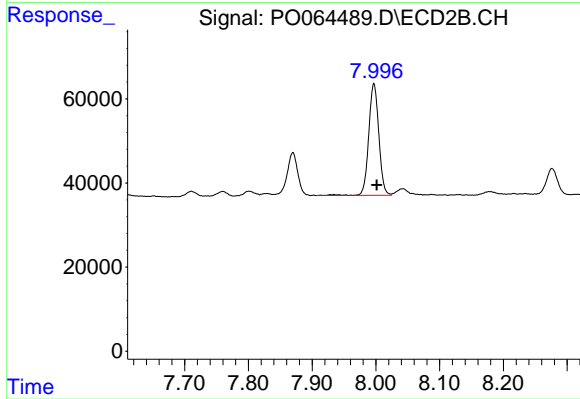
**Instrument :**  
 ECD\_O  
**ClientSampled :**  
 SOIL-COMP-2MS



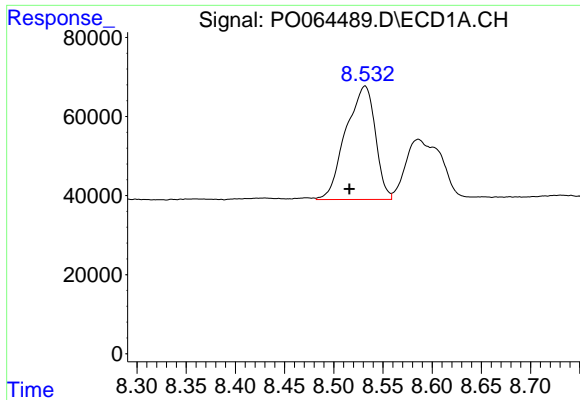
#39 AR-1262-4  
 R.T.: 7.504 min  
 Delta R.T.: -0.005 min  
 Response: 763040  
 Conc: 171.35 ng/ml



#40 AR-1262-5  
 R.T.: 9.231 min  
 Delta R.T.: 0.000 min  
 Response: 328266  
 Conc: 156.40 ng/ml

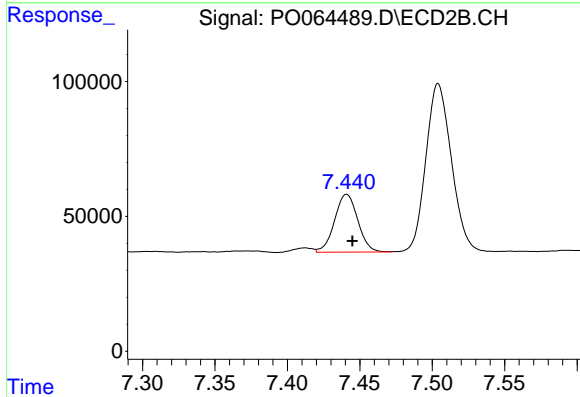


#40 AR-1262-5  
 R.T.: 7.997 min  
 Delta R.T.: -0.004 min  
 Response: 293253  
 Conc: 138.85 ng/ml

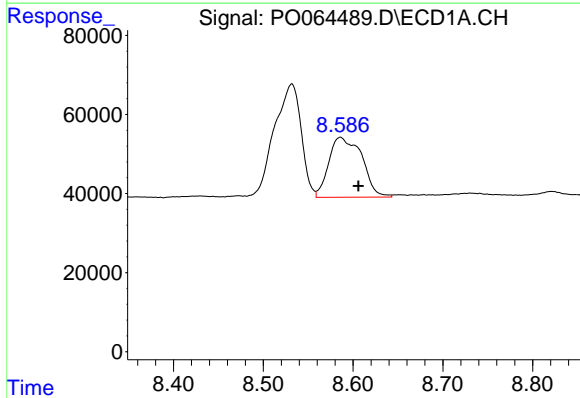


#41 AR-1268-1  
 R.T.: 8.532 min  
 Delta R.T.: 0.016 min  
 Response: 598166  
 Conc: 91.74 ng/ml

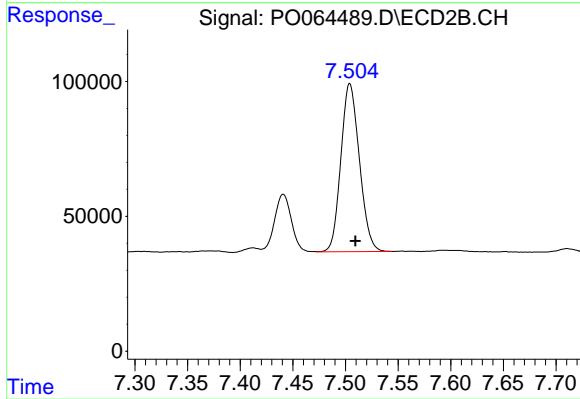
Instrument :  
 ECD\_O  
 ClientSampled :  
 SOIL-COMP-2MS



#41 AR-1268-1  
 R.T.: 7.441 min  
 Delta R.T.: -0.004 min  
 Response: 239710  
 Conc: 34.33 ng/ml

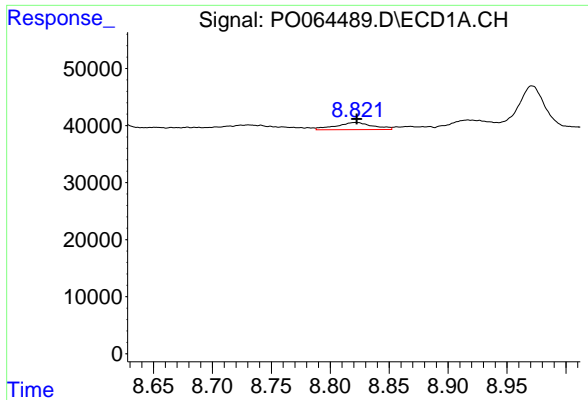


#42 AR-1268-2  
 R.T.: 8.586 min  
 Delta R.T.: -0.020 min  
 Response: 387419  
 Conc: 64.13 ng/ml



#42 AR-1268-2  
 R.T.: 7.504 min  
 Delta R.T.: -0.005 min  
 Response: 763040  
 Conc: 119.18 ng/ml

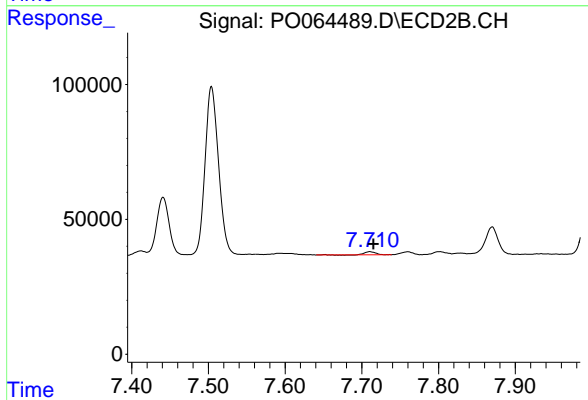




#43 AR-1268-3

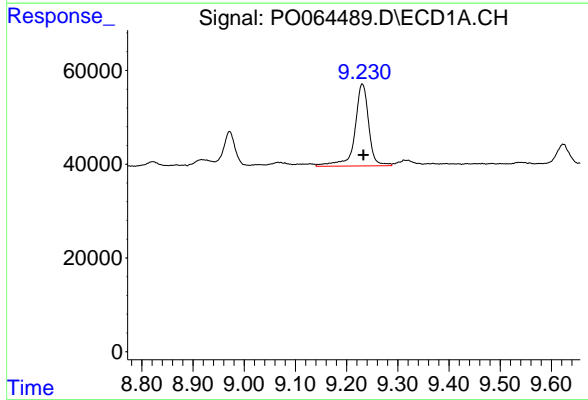
R.T.: 8.822 min  
 Delta R.T.: 0.000 min  
 Response: 27463  
 Conc: 5.53 ng/ml

Instrument :  
 ECD\_O  
 ClientSampleId :  
 SOIL-COMP-2MS



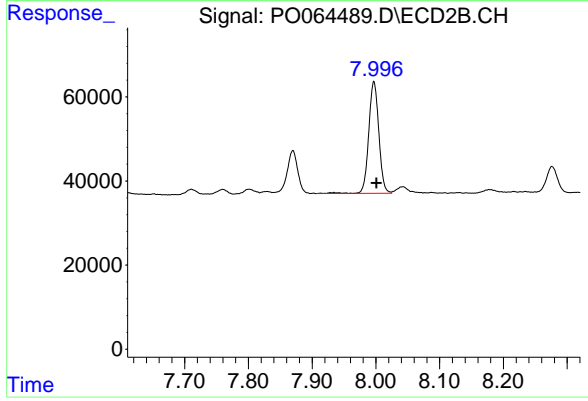
#43 AR-1268-3

R.T.: 7.711 min  
 Delta R.T.: -0.005 min  
 Response: 10958  
 Conc: 2.09 ng/ml



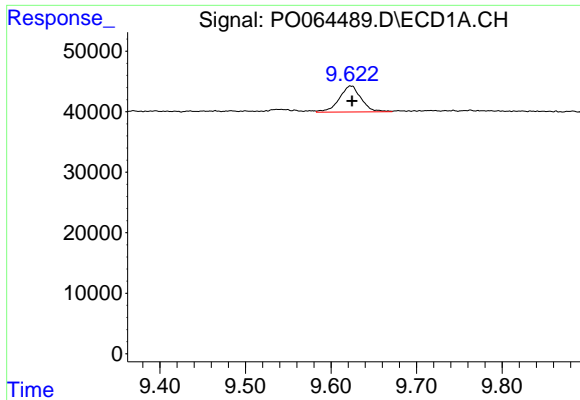
#44 AR-1268-4

R.T.: 9.231 min  
 Delta R.T.: -0.002 min  
 Response: 328266  
 Conc: 140.30 ng/ml



#44 AR-1268-4

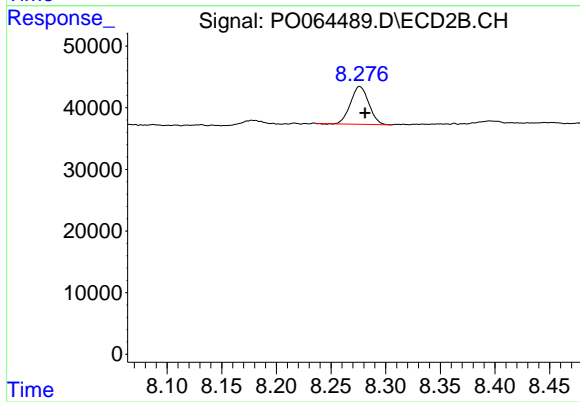
R.T.: 7.997 min  
 Delta R.T.: -0.004 min  
 Response: 293253  
 Conc: 125.53 ng/ml



#45 AR-1268-5

R.T.: 9.623 min  
Delta R.T.: -0.001 min  
Response: 76137  
Conc: 4.96 ng/ml

Instrument :  
ECD\_O  
ClientSampleId :  
SOIL-COMP-2MS



#45 AR-1268-5

R.T.: 8.276 min  
Delta R.T.: -0.005 min  
Response: 71679  
Conc: 4.34 ng/ml