

Data Path : Z:\pestpcbsrv\HPCHEM1\ECD_0\Data\PO121019\
 Data File : PO064512.D
 Signal(s) : Signal #1: ECD1A.CH Signal #2: ECD2B.CH
 Acq On : 10 Dec 2019 19:19
 Operator : SM/AJ
 Sample : AR1660CCC500
 Misc :
 ALS Vial : 3 Sample Multiplier: 1

Instrument :
 ECD_0
 ClientSampleId :
 AR1660CCC500

Integration File signal 1: autoint1.e
 Integration File signal 2: autoint2.e
 Quant Time: Dec 11 05:29:11 2019
 Quant Method : Z:\pestpcbsrv\HPCHEM1\ECD_0\methods\PO112719.M
 Quant Title : GC EXTRACTABLES
 QLast Update : Thu Nov 28 01:28:08 2019
 Response via : Initial Calibration
 Integrator: ChemStation 6890 Scale Mode: Small noise peaks clipped

Volume Inj. : 2 µl
 Signal #1 Phase : ZB-MR1 Signal #2 Phase: ZB-MR2
 Signal #1 Info : 30Mx0.32mmx 0.50µ Signal #2 Info : 30M x 0.32mm x 0.25µm

Compound	RT#1	RT#2	Resp#1	Resp#2	ng/ml	ng/ml
System Monitoring Compounds						
1) SA Tetrachlo...	4.321	3.566	1433317	1268953	48.398	53.351
2) SA Decachlor...	9.946	8.523	1682358	1890641	41.049	46.282
Target Compounds						
3) L1 AR-1016-1	5.481	4.642	670981	602126	516.877	575.091
4) L1 AR-1016-2	5.504	4.661	972847	825994	533.620	585.536
5) L1 AR-1016-3	5.564	4.834	593291	415965	516.921	540.057
6) L1 AR-1016-4	5.663	4.875	484481	371649	515.173	571.311
7) L1 AR-1016-5	5.955	5.087	500625	485139	514.456	582.735
8) L2 AR-1221-1	4.524	3.777	46107	52629	129.785	201.171 #
9) L2 AR-1221-2	4.616	3.863	92346	56470	333.998	282.558
10) L2 AR-1221-3	4.691	3.938	296764	253897	353.424	392.641
11) L3 AR-1232-1	4.691	3.938	296764	253897	231.471	250.712
12) L3 AR-1232-2	5.215	4.661	496641	825994	706.931	757.653
13) L3 AR-1232-3	5.504	4.834	972847	415965	702.507	715.507
14) L3 AR-1232-4	5.663	4.917	484481	459262	680.946	865.089 #
15) L3 AR-1232-5	5.753	5.087	464405	485139	824.561	828.561
16) L4 AR-1242-1	5.481	4.642	670981	602126	704.669	786.351
17) L4 AR-1242-2	5.504	4.661	972847	825994	720.310	799.476
18) L4 AR-1242-3	5.564	4.834	593291	415965	691.383	742.239
19) L4 AR-1242-4	5.663	4.917	484481	459262	692.897	809.735
20) L4 AR-1242-5	6.394	5.436	112047	418952	132.629	533.833 #
21) L5 AR-1248-1	5.481	4.642	670981	602126	1196.249	1340.919
22) L5 AR-1248-2	5.753	4.875	464405	371649	560.401	591.052
23) L5 AR-1248-3	5.955	4.917	500625	459262	544.234	711.782 #
24) L5 AR-1248-4	6.356	5.087	138856	485139	125.277	615.455 #
25) L5 AR-1248-5	6.394	5.436	112047	418952	104.426	345.794 #
26) L6 AR-1254-1	6.330	5.436	459953	418952	281.812	213.168
27) L6 AR-1254-2	6.547	5.582	607851	452584	233.175	252.713
28) L6 AR-1254-3	6.911	5.998	436971	853418	151.397	275.757 #
29) L6 AR-1254-4	7.195	6.210	315915	216680	137.945	105.019
30) L6 AR-1254-5	7.613	6.626	1537732	1609626	601.792	533.661
31) L7 AR-1260-1	7.074	6.112	1021353	1085038	541.208	618.179
32) L7 AR-1260-2	7.330	6.299	1270875	1380583	543.411	620.549
33) L7 AR-1260-3	7.688	6.452	960397	1286202	518.769	632.593
34) L7 AR-1260-4	7.911	6.922	1129549	1087554	515.403	586.359
35) L7 AR-1260-5	8.223	7.162	2121807	2671741	480.594	551.852
36) L8 AR-1262-1	7.688	6.716	960397	593573	321.672	472.392 #
37) L8 AR-1262-2	8.223	7.162	2121807	2671741	384.822	447.880
38) L8 AR-1262-3	8.536	7.444	1374363	593320	355.201	254.507 #
39) L8 AR-1262-4	8.590	7.507	880433	1937311	301.180	435.049 #
40) L8 AR-1262-5	9.237	8.000	594844	652559	283.409	308.972
41) L9 AR-1268-1	8.536	7.444	1374363	593320	210.795	84.980 #

Data Path : Z:\pestpcbsrv\HPCHEM1\ECD_0\Data\PO121019\
 Data File : PO064512.D
 Signal(s) : Signal #1: ECD1A.CH Signal #2: ECD2B.CH
 Acq On : 10 Dec 2019 19:19
 Operator : SM/AJ
 Sample : AR1660CCC500
 Misc :
 ALS Vial : 3 Sample Multiplier: 1

Instrument :
 ECD_0
 ClientSampleId :
 AR1660CCC500

Integration File signal 1: autoint1.e
 Integration File signal 2: autoint2.e
 Quant Time: Dec 11 05:29:11 2019
 Quant Method : Z:\pestpcbsrv\HPCHEM1\ECD_0\methods\PO112719.M
 Quant Title : GC EXTRACTABLES
 QLast Update : Thu Nov 28 01:28:08 2019
 Response via : Initial Calibration
 Integrator: ChemStation 6890 Scale Mode: Small noise peaks clipped

Volume Inj. : 2 µl
 Signal #1 Phase : ZB-MR1 Signal #2 Phase: ZB-MR2
 Signal #1 Info : 30Mx0.32mmx 0.50µ Signal #2 Info : 30M x 0.32mm x 0.25µm

	Compound	RT#1	RT#2	Resp#1	Resp#2	ng/ml	ng/ml
42)	L9 AR-1268-2	8.590	7.507	880433	1937311	145.730	302.585 #
43)	L9 AR-1268-3	8.826	7.713	58407	47810	11.764	9.129
44)	L9 AR-1268-4	9.237	8.000	594844	652559	254.242	279.326
45)	L9 AR-1268-5	9.628	8.280	163548	175732	10.646	10.640

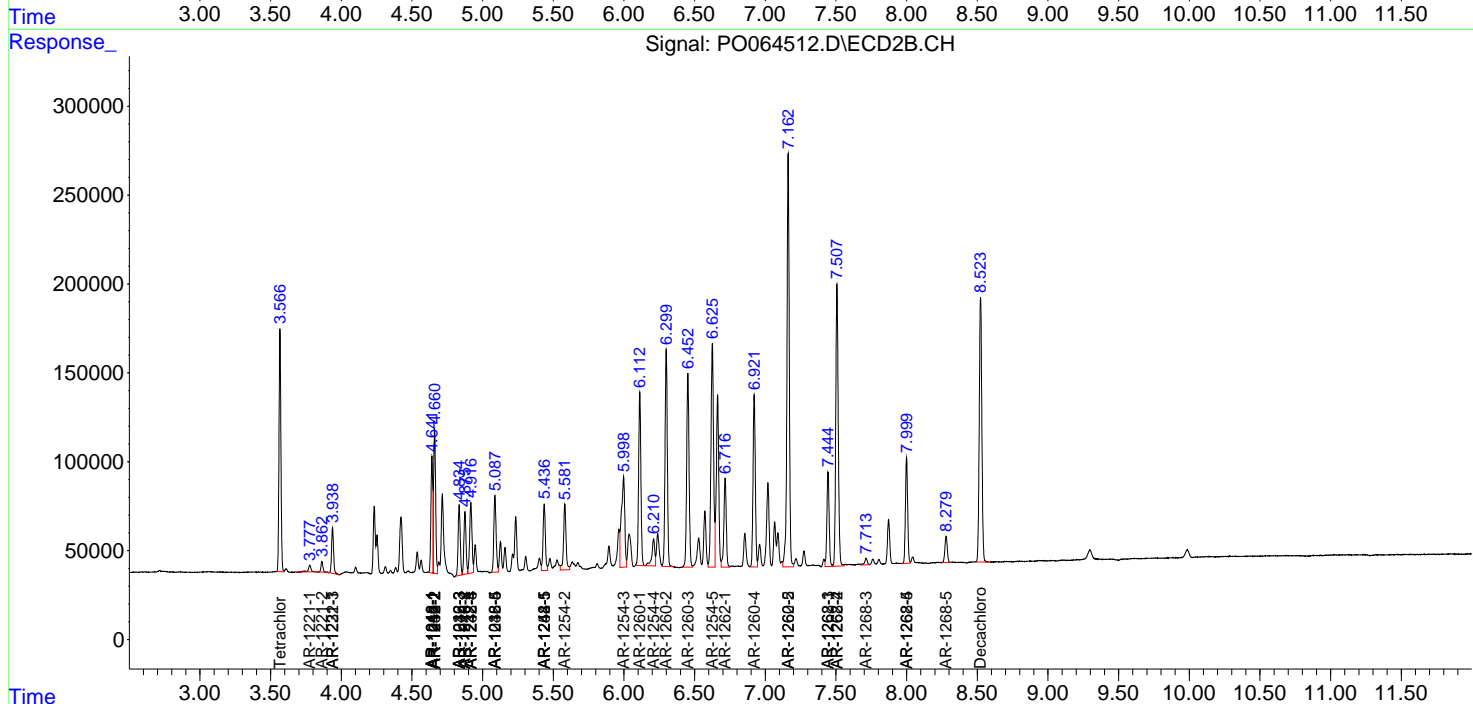
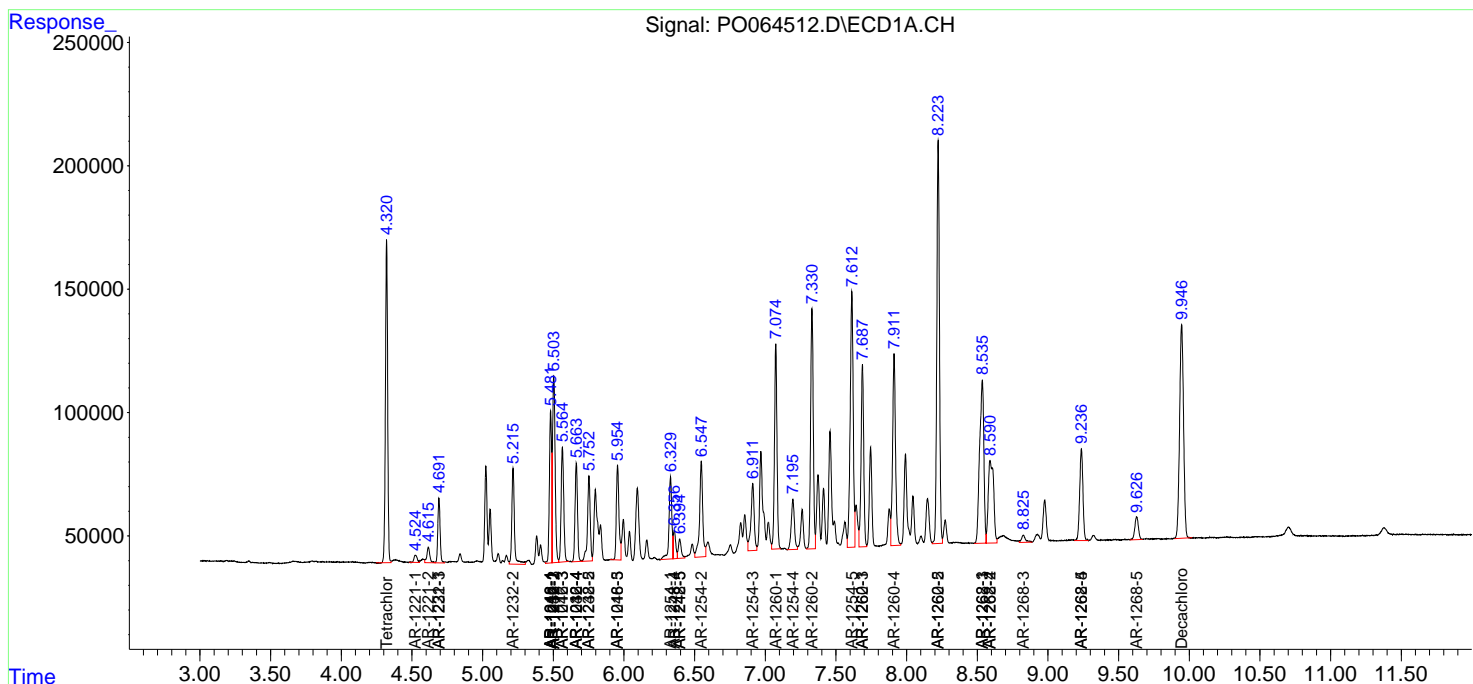
(f)=RT Delta > 1/2 Window (#)=Amounts differ by > 25% (m)=manual int.

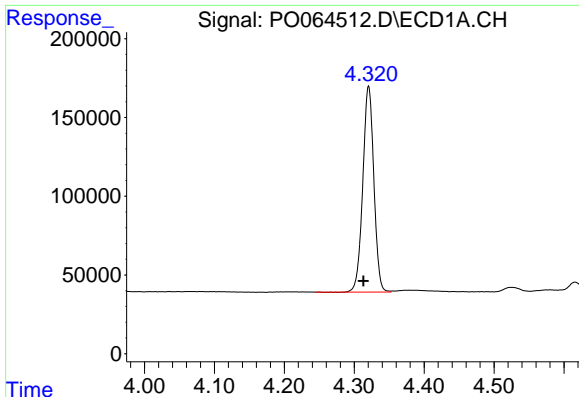
Data Path : Z:\pestpcbsrv\HPCHEM1\ECD_O\Data\PO121019\
 Data File : PO064512.D
 Signal(s) : Signal #1: ECD1A.CH Signal #2: ECD2B.CH
 Acq On : 10 Dec 2019 19:19
 Operator : SM/AJ
 Sample : AR1660CCC500
 Misc :
 ALS Vial : 3 Sample Multiplier: 1

Instrument :
 ECD_O
 Client Sampled :
 AR1660CCC500

Integration File signal 1: autoint1.e
 Integration File signal 2: autoint2.e
 Quant Time: Dec 11 05:29:11 2019
 Quant Method : Z:\pestpcbsrv\HPCHEM1\ECD_O\methods\PO112719.M
 Quant Title : GC EXTRACTABLES
 QLast Update : Thu Nov 28 01:28:08 2019
 Response via : Initial Calibration
 Integrator: ChemStation 6890 Scale Mode: Small noise peaks clipped

Volume Inj. : 2 µl
 Signal #1 Phase : ZB-MR1 Signal #2 Phase: ZB-MR2
 Signal #1 Info : 30Mx0.32mmx 0.50µ Signal #2 Info : 30M x 0.32mm x 0.25µm

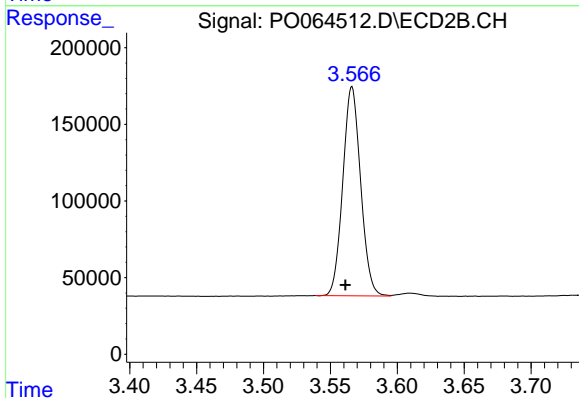




#1 Tetrachloro-m-xylene

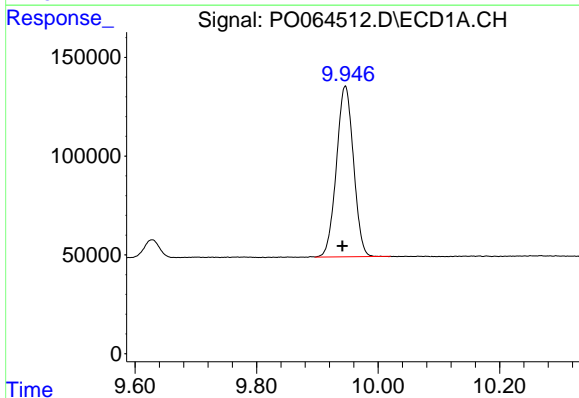
R.T.: 4.321 min
 Delta R.T.: 0.008 min
 Response: 1433317
 Conc: 48.40 ng/ml

Instrument :
 ECD_O
 ClientSampled :
 AR1660CCC500



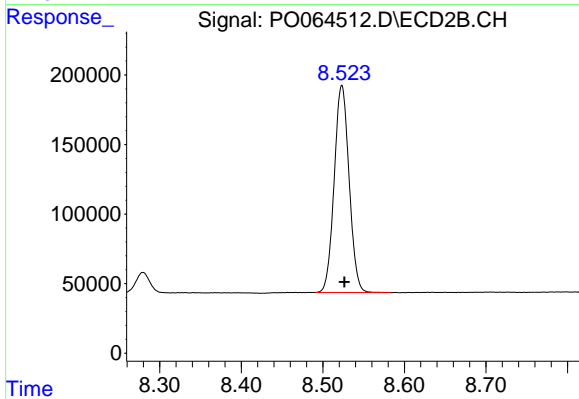
#1 Tetrachloro-m-xylene

R.T.: 3.566 min
 Delta R.T.: 0.005 min
 Response: 1268953
 Conc: 53.35 ng/ml



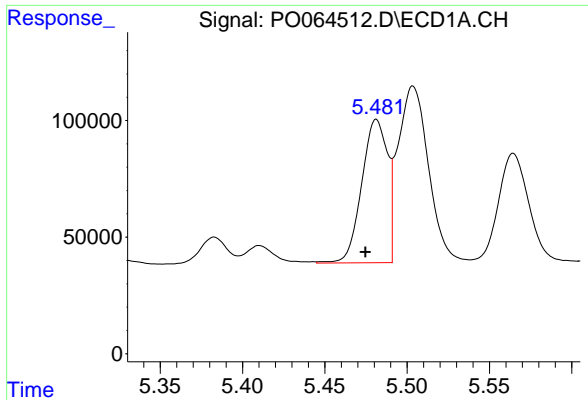
#2 Decachlorobiphenyl

R.T.: 9.946 min
 Delta R.T.: 0.005 min
 Response: 1682358
 Conc: 41.05 ng/ml



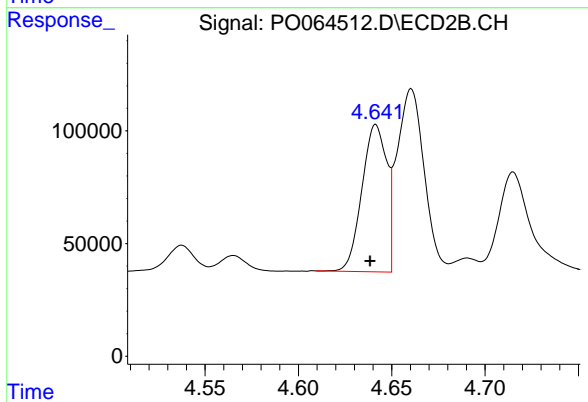
#2 Decachlorobiphenyl

R.T.: 8.523 min
 Delta R.T.: -0.003 min
 Response: 1890641
 Conc: 46.28 ng/ml

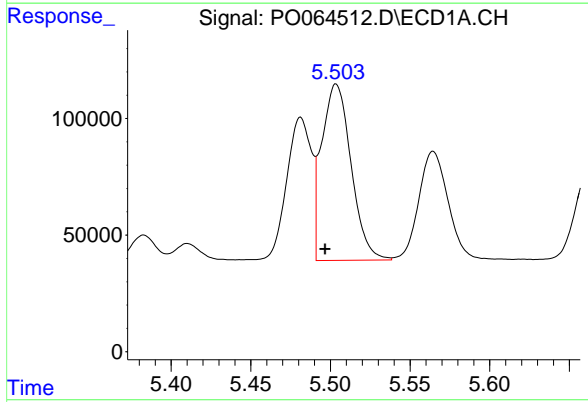


#3 AR-1016-1
 R.T.: 5.481 min
 Delta R.T.: 0.007 min
 Response: 670981
 Conc: 516.88 ng/ml

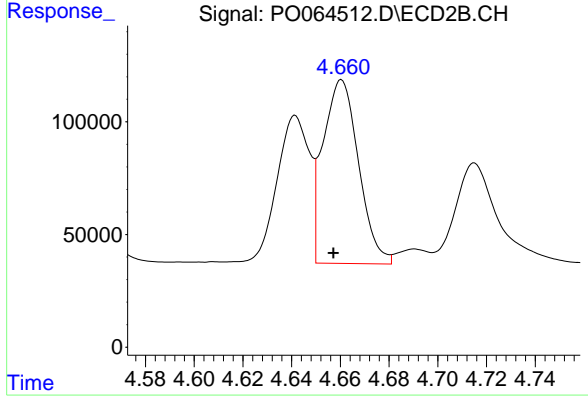
Instrument :
 ECD_O
 ClientSampled :
 AR1660CCC500



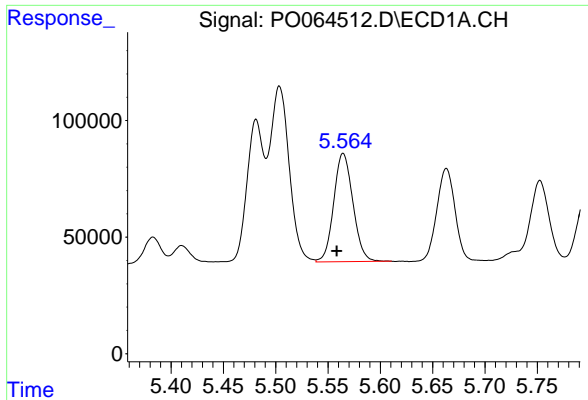
#3 AR-1016-1
 R.T.: 4.642 min
 Delta R.T.: 0.003 min
 Response: 602126
 Conc: 575.09 ng/ml



#4 AR-1016-2
 R.T.: 5.504 min
 Delta R.T.: 0.007 min
 Response: 972847
 Conc: 533.62 ng/ml



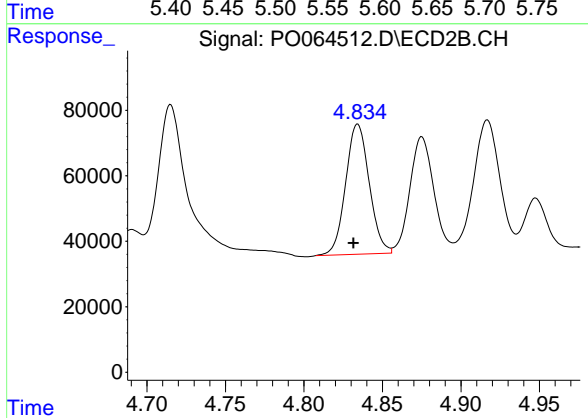
#4 AR-1016-2
 R.T.: 4.661 min
 Delta R.T.: 0.003 min
 Response: 825994
 Conc: 585.54 ng/ml



#5 AR-1016-3

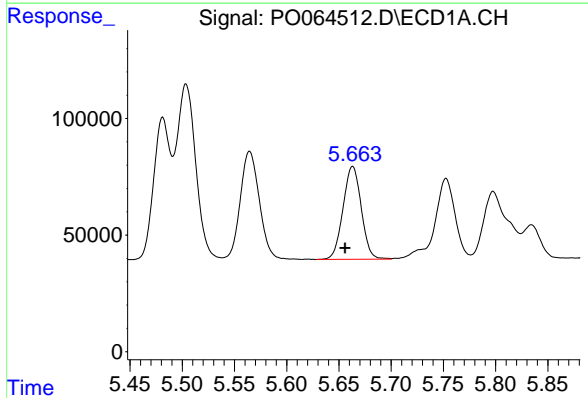
R.T.: 5.564 min
 Delta R.T.: 0.006 min
 Response: 593291
 Conc: 516.92 ng/ml

Instrument :
 ECD_O
 ClientSampleId :
 AR1660CCC500



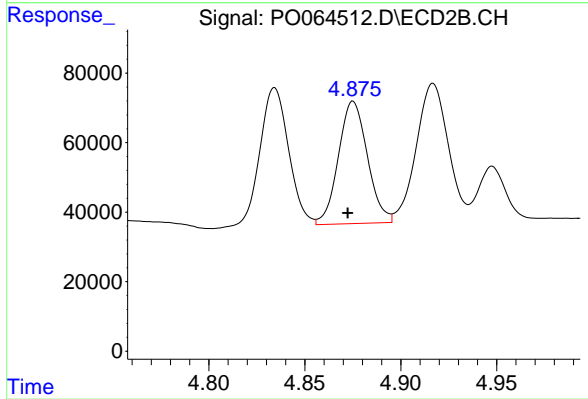
#5 AR-1016-3

R.T.: 4.834 min
 Delta R.T.: 0.003 min
 Response: 415965
 Conc: 540.06 ng/ml



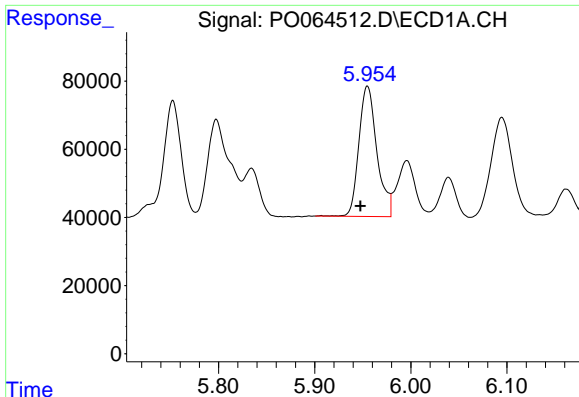
#6 AR-1016-4

R.T.: 5.663 min
 Delta R.T.: 0.007 min
 Response: 484481
 Conc: 515.17 ng/ml



#6 AR-1016-4

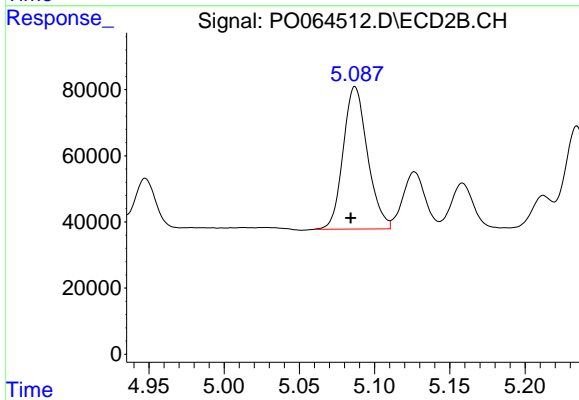
R.T.: 4.875 min
 Delta R.T.: 0.003 min
 Response: 371649
 Conc: 571.31 ng/ml



#7 AR-1016-5

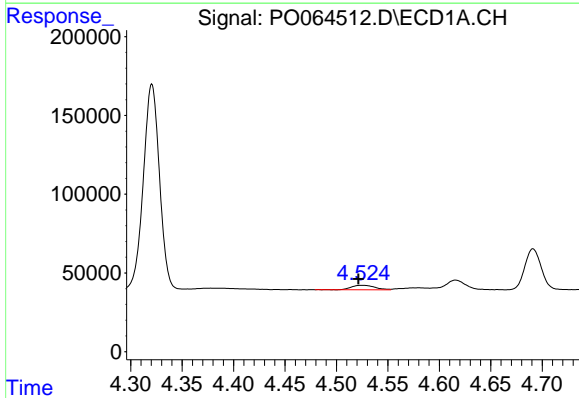
R.T.: 5.955 min
 Delta R.T.: 0.007 min
 Response: 500625
 Conc: 514.46 ng/ml

Instrument :
 ECD_O
 ClientSampleId :
 AR1660CCC500



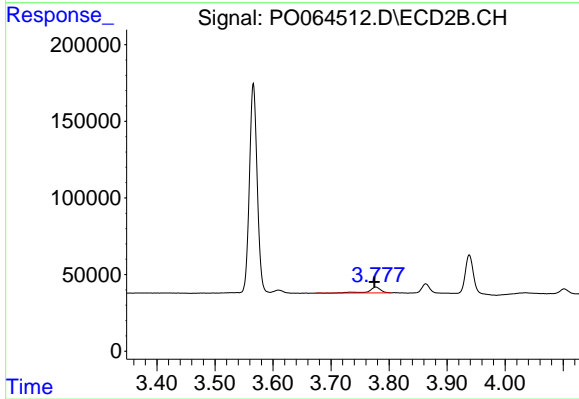
#7 AR-1016-5

R.T.: 5.087 min
 Delta R.T.: 0.003 min
 Response: 485139
 Conc: 582.74 ng/ml



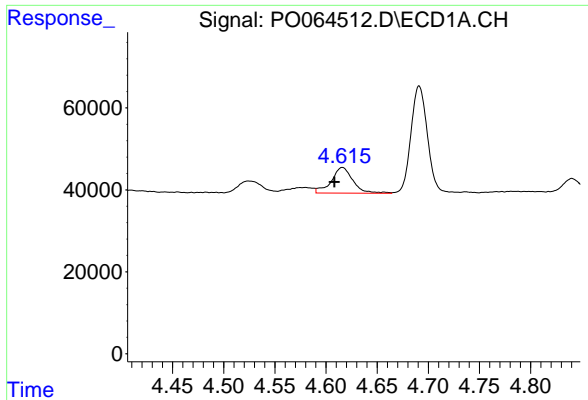
#8 AR-1221-1

R.T.: 4.524 min
 Delta R.T.: 0.003 min
 Response: 46107
 Conc: 129.79 ng/ml



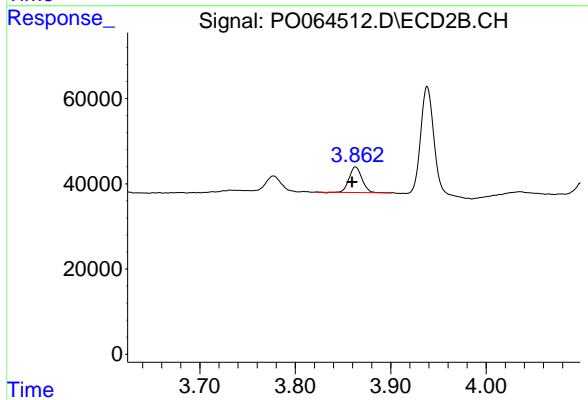
#8 AR-1221-1

R.T.: 3.777 min
 Delta R.T.: 0.003 min
 Response: 52629
 Conc: 201.17 ng/ml

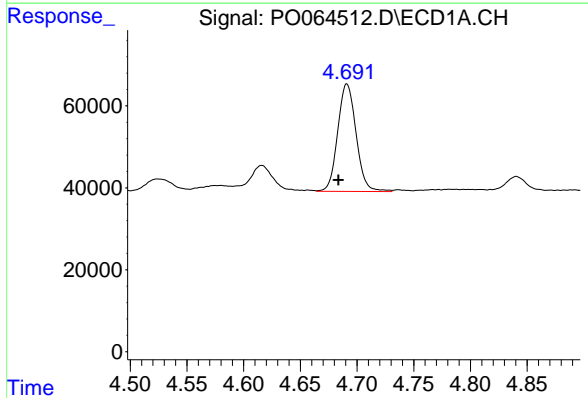


#9 AR-1221-2
 R.T.: 4.616 min
 Delta R.T.: 0.008 min
 Response: 92346
 Conc: 334.00 ng/ml

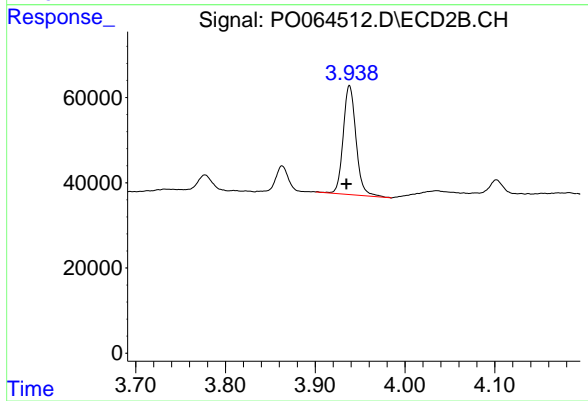
Instrument :
 ECD_O
 ClientSampleId :
 AR1660CCC500



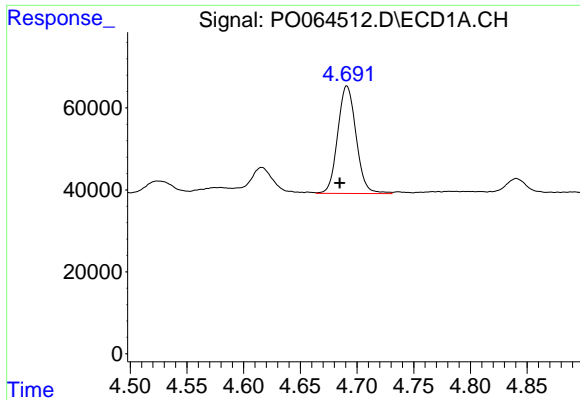
#9 AR-1221-2
 R.T.: 3.863 min
 Delta R.T.: 0.004 min
 Response: 56470
 Conc: 282.56 ng/ml



#10 AR-1221-3
 R.T.: 4.691 min
 Delta R.T.: 0.007 min
 Response: 296764
 Conc: 353.42 ng/ml



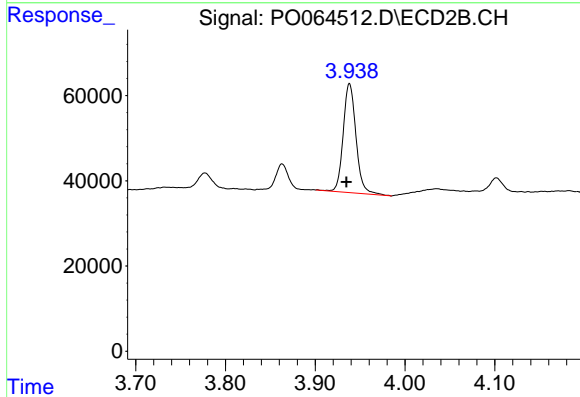
#10 AR-1221-3
 R.T.: 3.938 min
 Delta R.T.: 0.003 min
 Response: 253897
 Conc: 392.64 ng/ml



#11 AR-1232-1

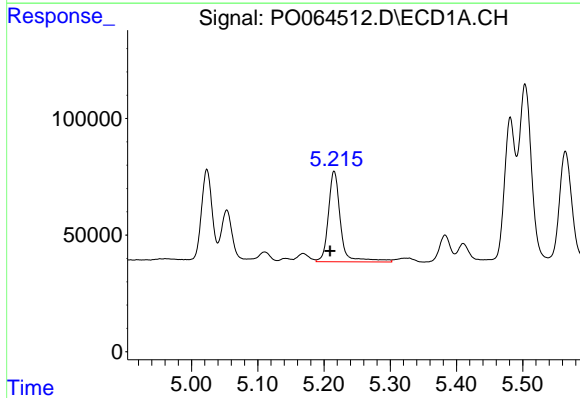
R.T.: 4.691 min
 Delta R.T.: 0.006 min
 Response: 296764
 Conc: 231.47 ng/ml

Instrument :
 ECD_O
 ClientSampleId :
 AR1660CCC500



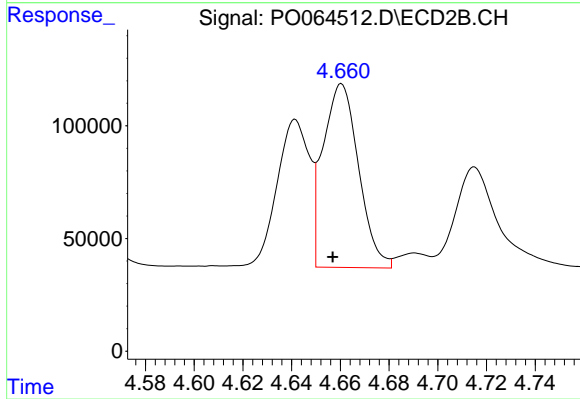
#11 AR-1232-1

R.T.: 3.938 min
 Delta R.T.: 0.003 min
 Response: 253897
 Conc: 250.71 ng/ml



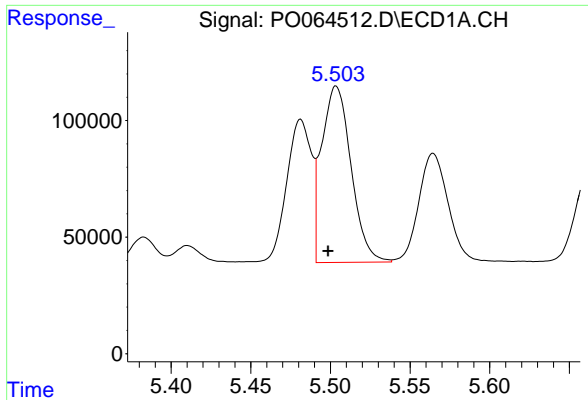
#12 AR-1232-2

R.T.: 5.215 min
 Delta R.T.: 0.006 min
 Response: 496641
 Conc: 706.93 ng/ml



#12 AR-1232-2

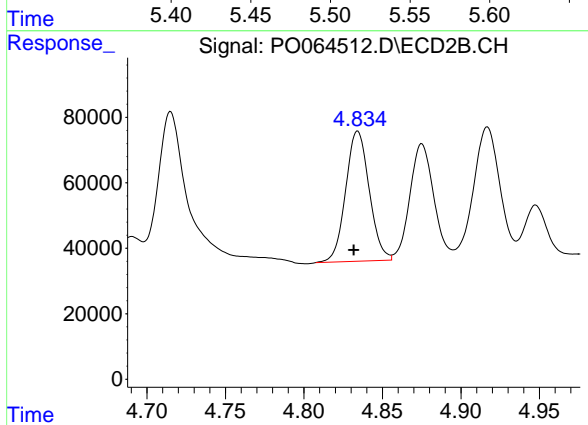
R.T.: 4.661 min
 Delta R.T.: 0.004 min
 Response: 825994
 Conc: 757.65 ng/ml



#13 AR-1232-3

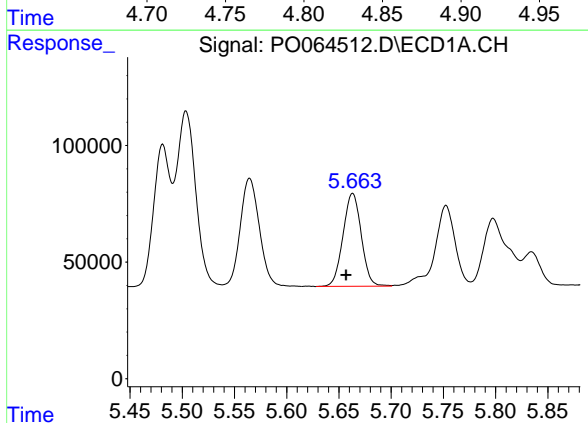
R.T.: 5.504 min
 Delta R.T.: 0.005 min
 Response: 972847
 Conc: 702.51 ng/ml

Instrument :
 ECD_O
 ClientSampleId :
 AR1660CCC500



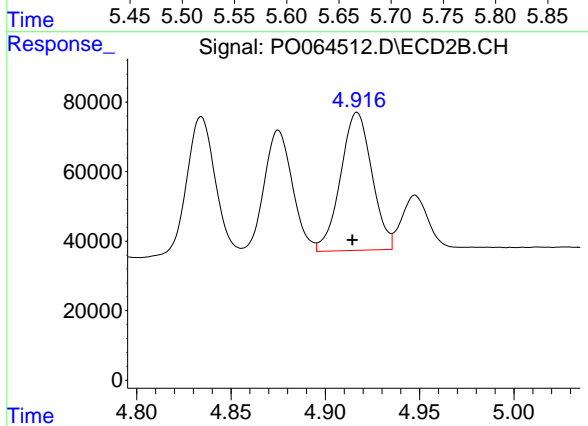
#13 AR-1232-3

R.T.: 4.834 min
 Delta R.T.: 0.002 min
 Response: 415965
 Conc: 715.51 ng/ml



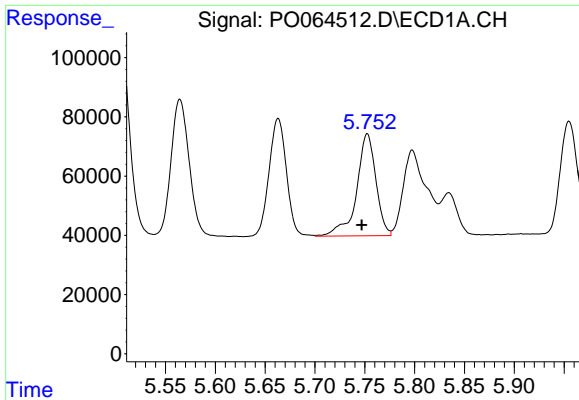
#14 AR-1232-4

R.T.: 5.663 min
 Delta R.T.: 0.006 min
 Response: 484481
 Conc: 680.95 ng/ml



#14 AR-1232-4

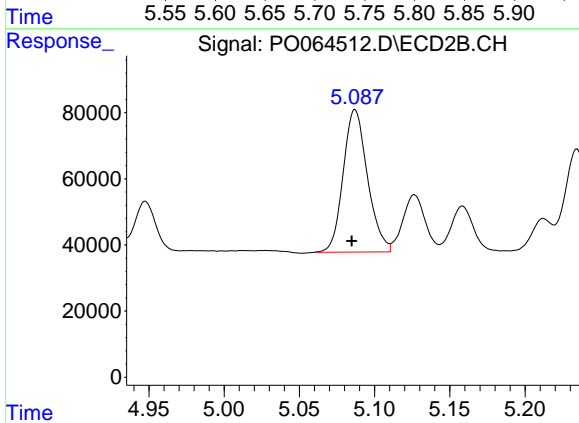
R.T.: 4.917 min
 Delta R.T.: 0.002 min
 Response: 459262
 Conc: 865.09 ng/ml



#15 AR-1232-5

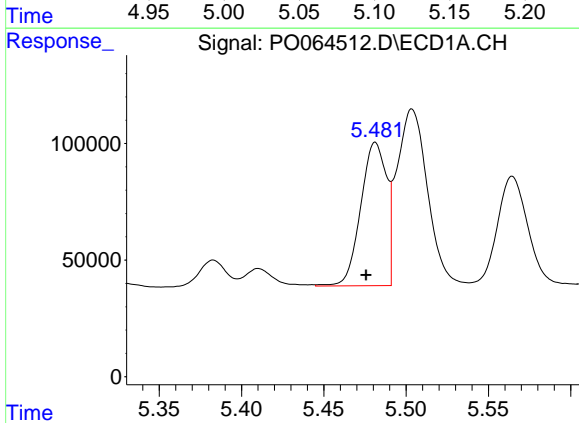
R.T.: 5.753 min
 Delta R.T.: 0.006 min
 Response: 464405
 Conc: 824.56 ng/ml

Instrument :
 ECD_O
 ClientSampleId :
 AR1660CCC500



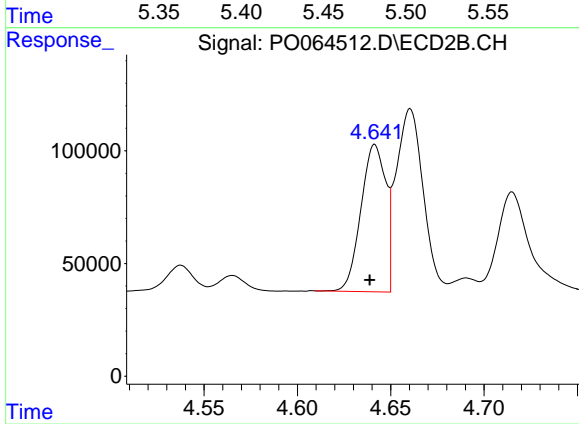
#15 AR-1232-5

R.T.: 5.087 min
 Delta R.T.: 0.002 min
 Response: 485139
 Conc: 828.56 ng/ml



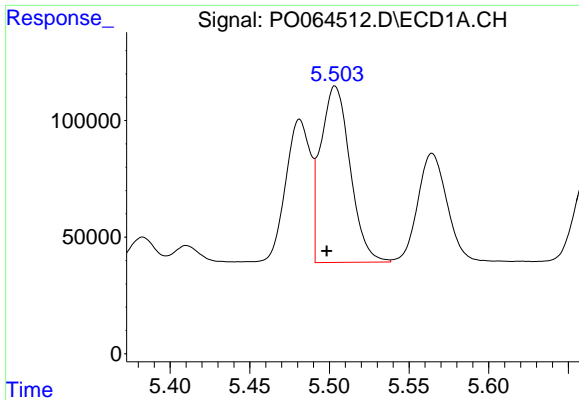
#16 AR-1242-1

R.T.: 5.481 min
 Delta R.T.: 0.006 min
 Response: 670981
 Conc: 704.67 ng/ml



#16 AR-1242-1

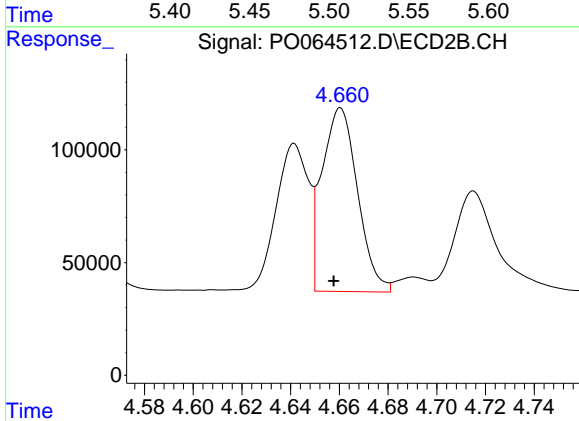
R.T.: 4.642 min
 Delta R.T.: 0.003 min
 Response: 602126
 Conc: 786.35 ng/ml



#17 AR-1242-2

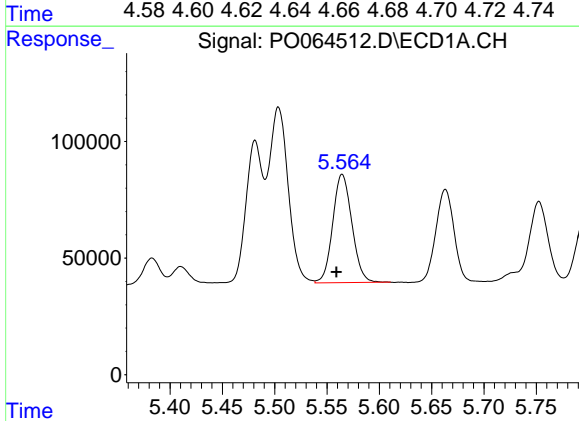
R.T.: 5.504 min
 Delta R.T.: 0.005 min
 Response: 972847
 Conc: 720.31 ng/ml

Instrument :
 ECD_O
 ClientSampleId :
 AR1660CCC500



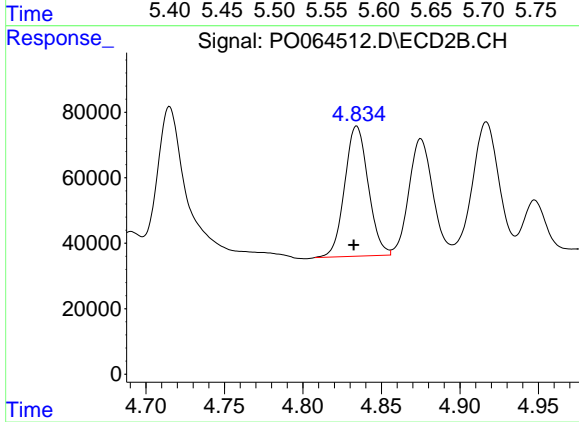
#17 AR-1242-2

R.T.: 4.661 min
 Delta R.T.: 0.003 min
 Response: 825994
 Conc: 799.48 ng/ml



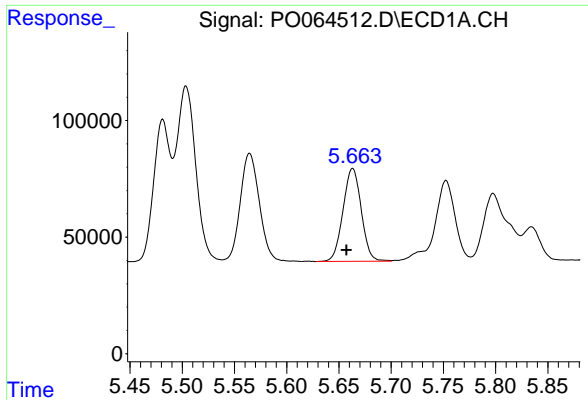
#18 AR-1242-3

R.T.: 5.564 min
 Delta R.T.: 0.006 min
 Response: 593291
 Conc: 691.38 ng/ml



#18 AR-1242-3

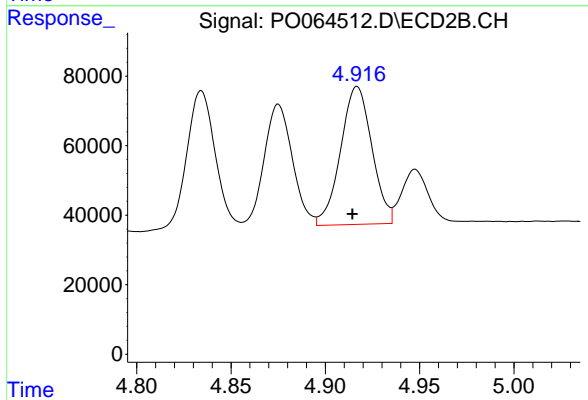
R.T.: 4.834 min
 Delta R.T.: 0.002 min
 Response: 415965
 Conc: 742.24 ng/ml



#19 AR-1242-4

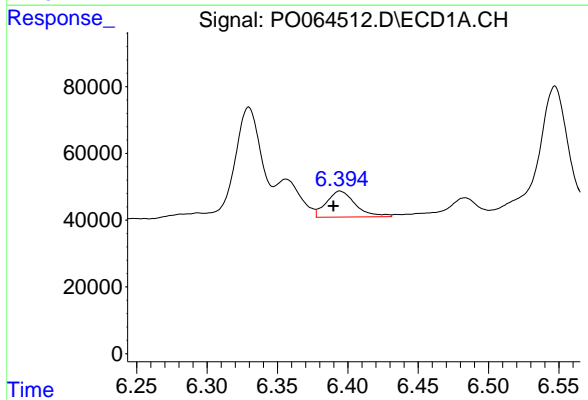
R.T.: 5.663 min
Delta R.T.: 0.006 min
Response: 484481
Conc: 692.90 ng/ml

Instrument :
ECD_O
ClientSampleId :
AR1660CCC500



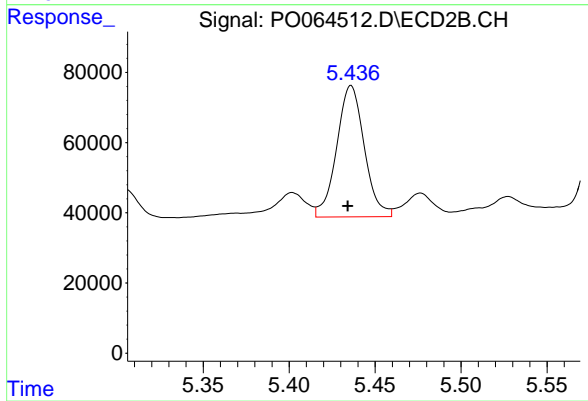
#19 AR-1242-4

R.T.: 4.917 min
Delta R.T.: 0.002 min
Response: 459262
Conc: 809.74 ng/ml



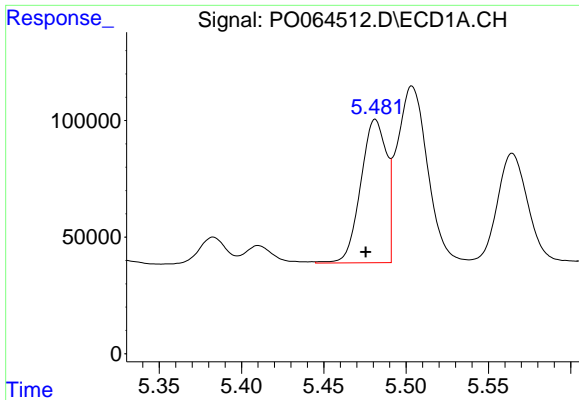
#20 AR-1242-5

R.T.: 6.394 min
Delta R.T.: 0.005 min
Response: 112047
Conc: 132.63 ng/ml



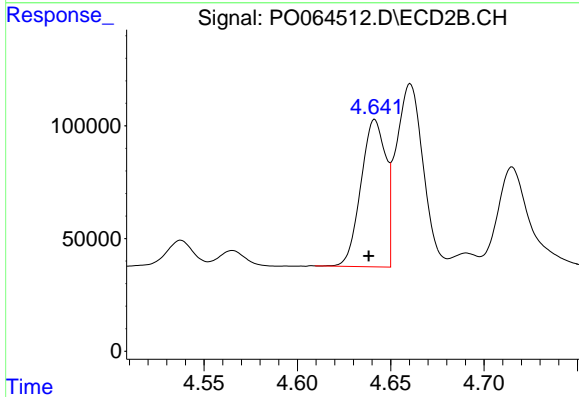
#20 AR-1242-5

R.T.: 5.436 min
Delta R.T.: 0.002 min
Response: 418952
Conc: 533.83 ng/ml

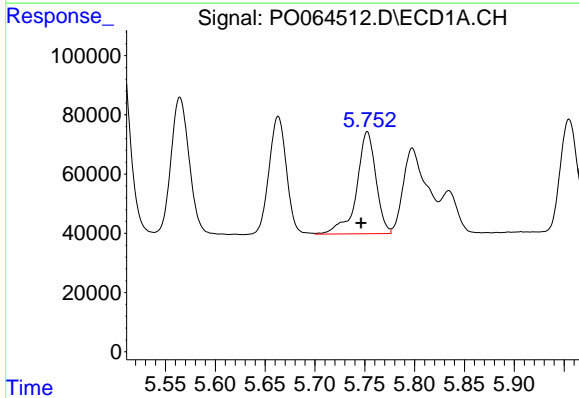


#21 AR-1248-1
 R.T.: 5.481 min
 Delta R.T.: 0.006 min
 Response: 670981
 Conc: 1196.25 ng/ml

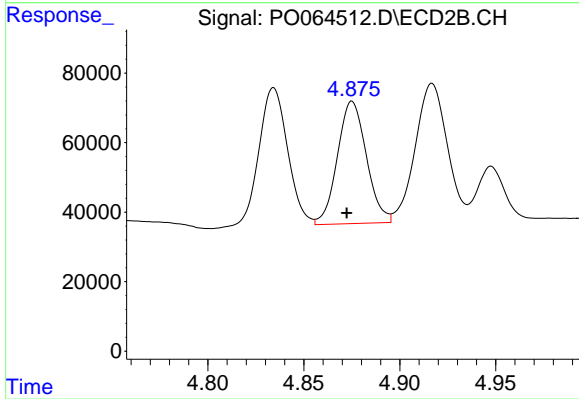
Instrument :
 ECD_O
ClientSampled :
 AR1660CCC500



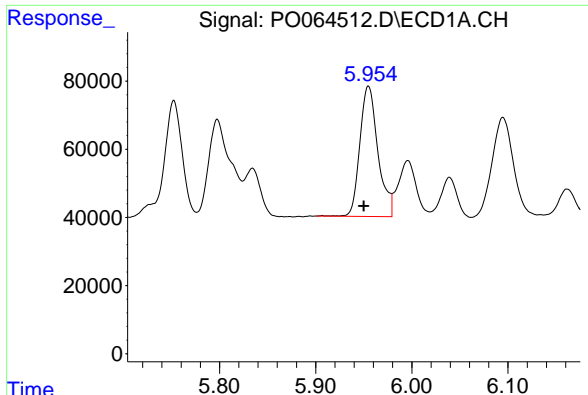
#21 AR-1248-1
 R.T.: 4.642 min
 Delta R.T.: 0.003 min
 Response: 602126
 Conc: 1340.92 ng/ml



#22 AR-1248-2
 R.T.: 5.753 min
 Delta R.T.: 0.006 min
 Response: 464405
 Conc: 560.40 ng/ml



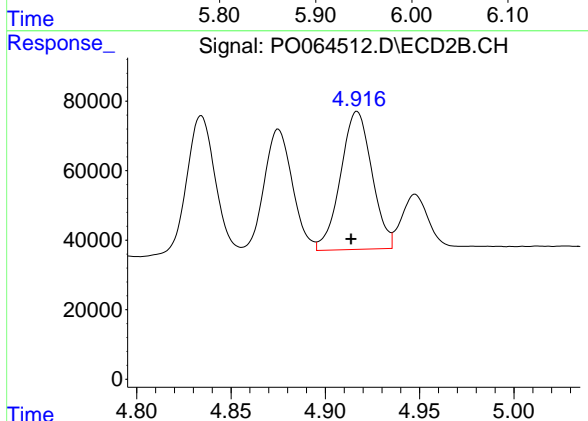
#22 AR-1248-2
 R.T.: 4.875 min
 Delta R.T.: 0.003 min
 Response: 371649
 Conc: 591.05 ng/ml



#23 AR-1248-3

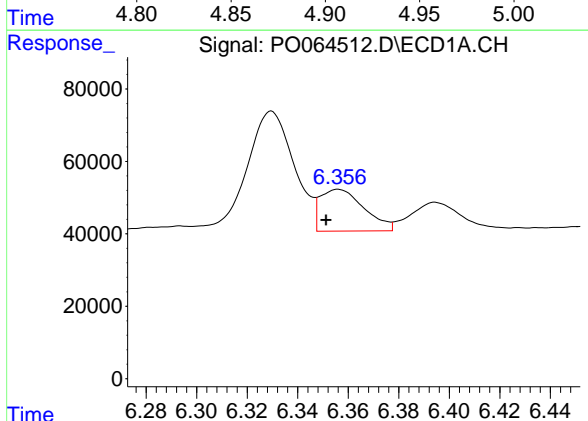
R.T.: 5.955 min
 Delta R.T.: 0.005 min
 Response: 500625
 Conc: 544.23 ng/ml

Instrument :
 ECD_O
 ClientSampleId :
 AR1660CCC500



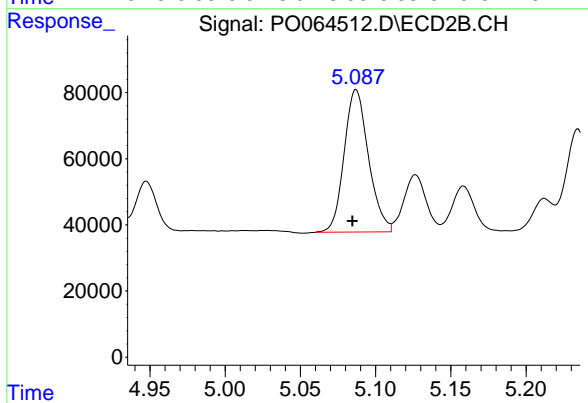
#23 AR-1248-3

R.T.: 4.917 min
 Delta R.T.: 0.003 min
 Response: 459262
 Conc: 711.78 ng/ml



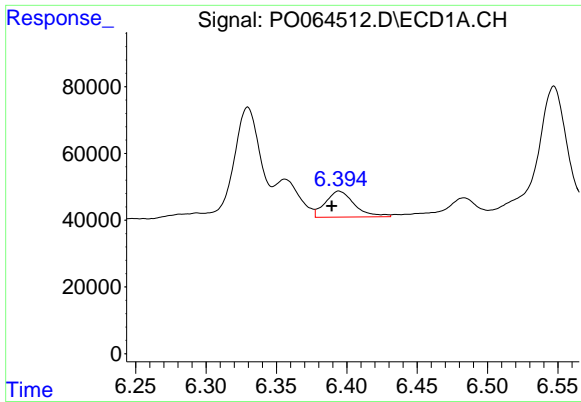
#24 AR-1248-4

R.T.: 6.356 min
 Delta R.T.: 0.005 min
 Response: 138856
 Conc: 125.28 ng/ml



#24 AR-1248-4

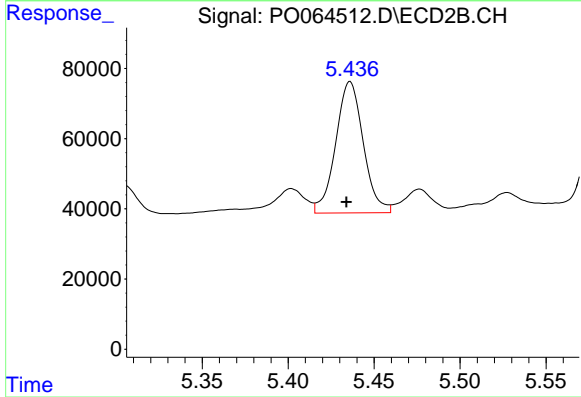
R.T.: 5.087 min
 Delta R.T.: 0.002 min
 Response: 485139
 Conc: 615.46 ng/ml



#25 AR-1248-5

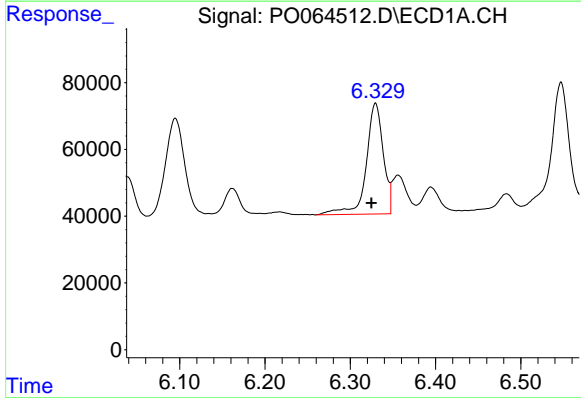
R.T.: 6.394 min
 Delta R.T.: 0.005 min
 Response: 112047
 Conc: 104.43 ng/ml

Instrument :
 ECD_O
 ClientSampled :
 AR1660CCC500



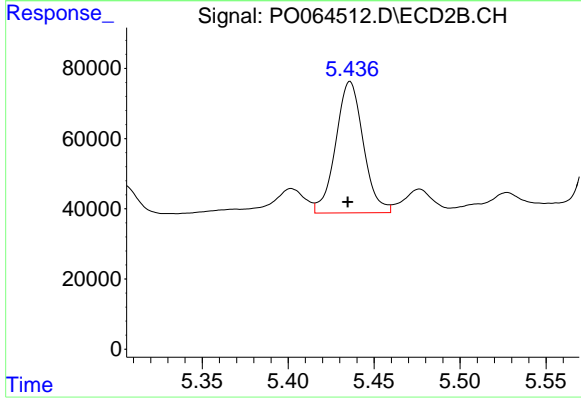
#25 AR-1248-5

R.T.: 5.436 min
 Delta R.T.: 0.002 min
 Response: 418952
 Conc: 345.79 ng/ml



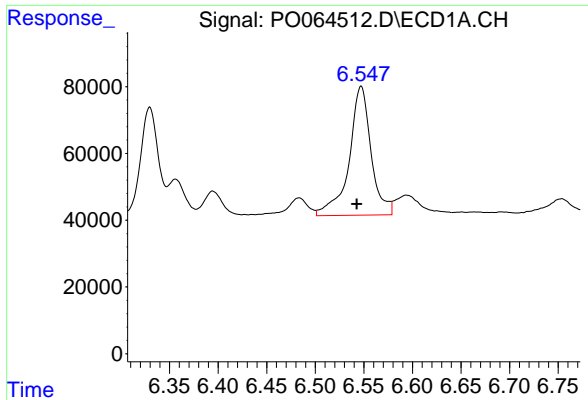
#26 AR-1254-1

R.T.: 6.330 min
 Delta R.T.: 0.005 min
 Response: 459953
 Conc: 281.81 ng/ml



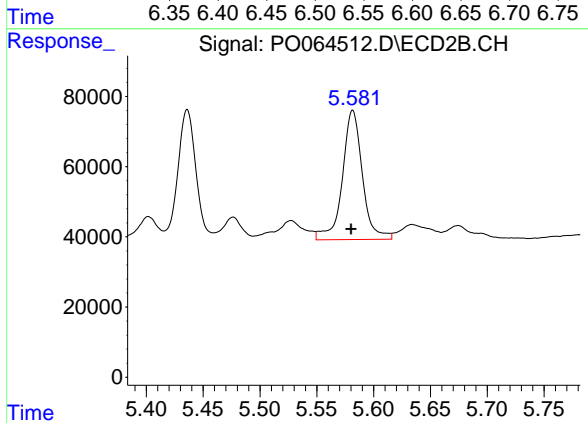
#26 AR-1254-1

R.T.: 5.436 min
 Delta R.T.: 0.001 min
 Response: 418952
 Conc: 213.17 ng/ml

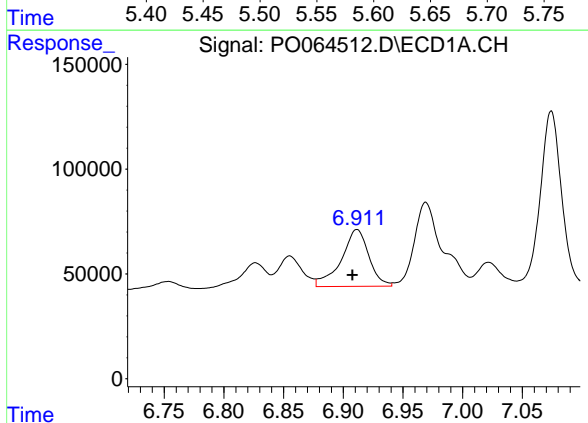


#27 AR-1254-2
 R.T.: 6.547 min
 Delta R.T.: 0.005 min
 Response: 607851
 Conc: 233.17 ng/ml

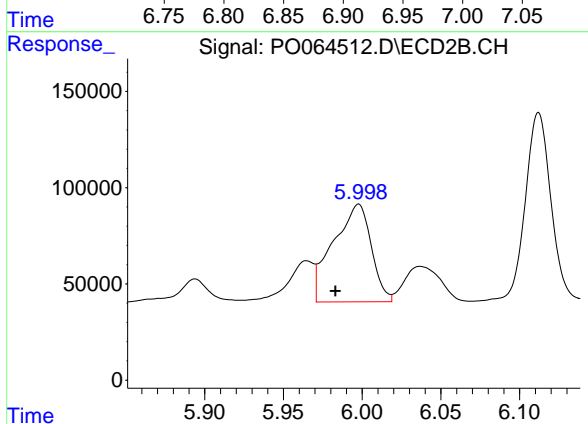
Instrument :
 ECD_O
 ClientSampleId :
 AR1660CCC500



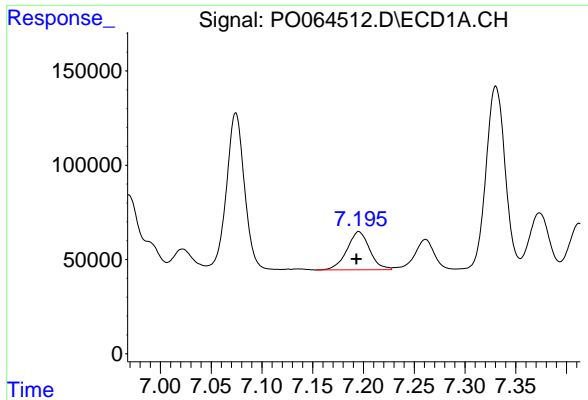
#27 AR-1254-2
 R.T.: 5.582 min
 Delta R.T.: 0.001 min
 Response: 452584
 Conc: 252.71 ng/ml



#28 AR-1254-3
 R.T.: 6.911 min
 Delta R.T.: 0.004 min
 Response: 436971
 Conc: 151.40 ng/ml

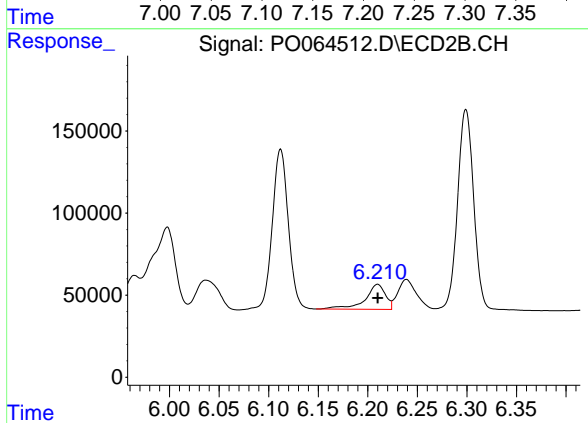


#28 AR-1254-3
 R.T.: 5.998 min
 Delta R.T.: 0.015 min
 Response: 853418
 Conc: 275.76 ng/ml

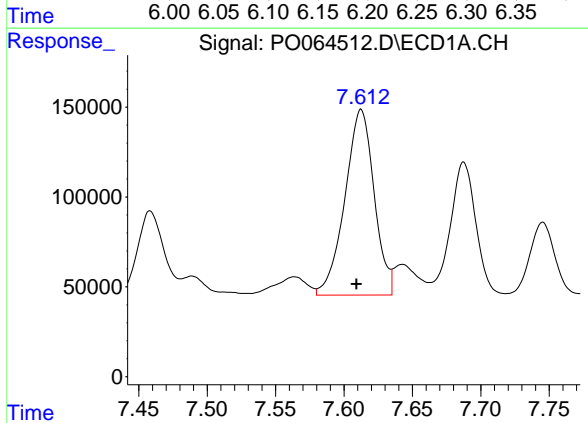


#29 AR-1254-4
 R.T.: 7.195 min
 Delta R.T.: 0.002 min
 Response: 315915
 Conc: 137.94 ng/ml

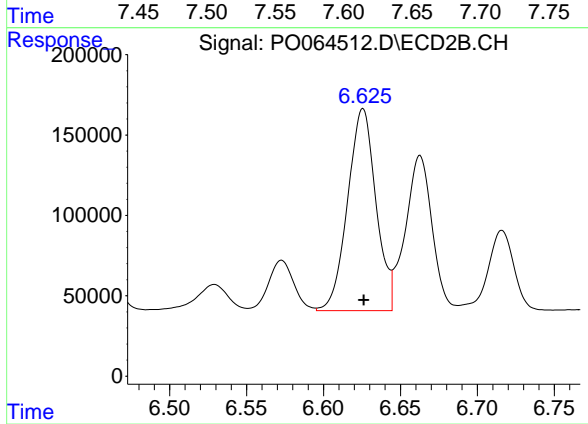
Instrument :
 ECD_O
 ClientSampleId :
 AR1660CCC500



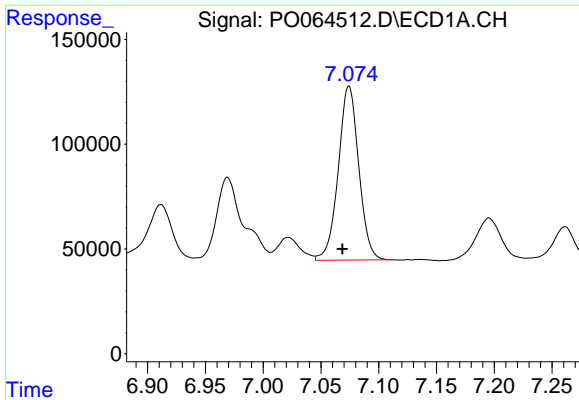
#29 AR-1254-4
 R.T.: 6.210 min
 Delta R.T.: 0.000 min
 Response: 216680
 Conc: 105.02 ng/ml



#30 AR-1254-5
 R.T.: 7.613 min
 Delta R.T.: 0.003 min
 Response: 1537732
 Conc: 601.79 ng/ml

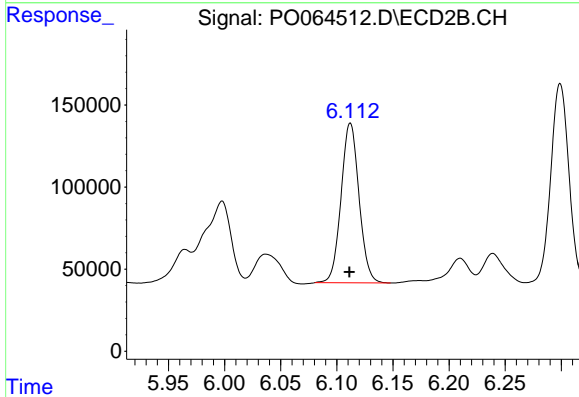


#30 AR-1254-5
 R.T.: 6.626 min
 Delta R.T.: 0.000 min
 Response: 1609626
 Conc: 533.66 ng/ml

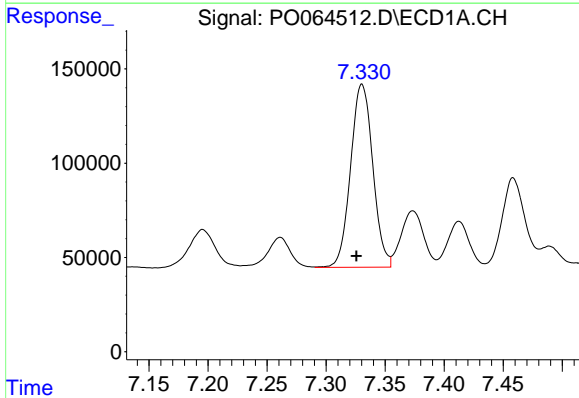


#31 AR-1260-1
 R.T.: 7.074 min
 Delta R.T.: 0.006 min
 Response: 1021353
 Conc: 541.21 ng/ml

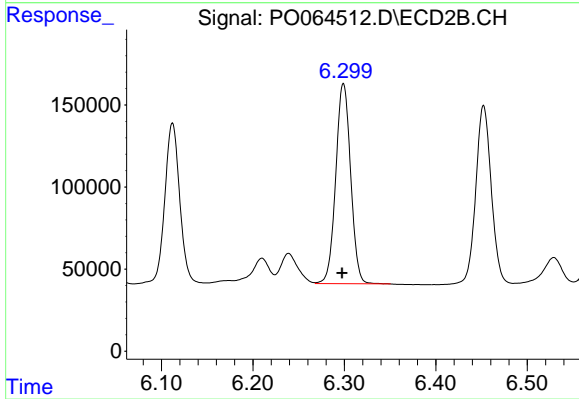
Instrument :
 ECD_O
ClientSampled :
 AR1660CCC500



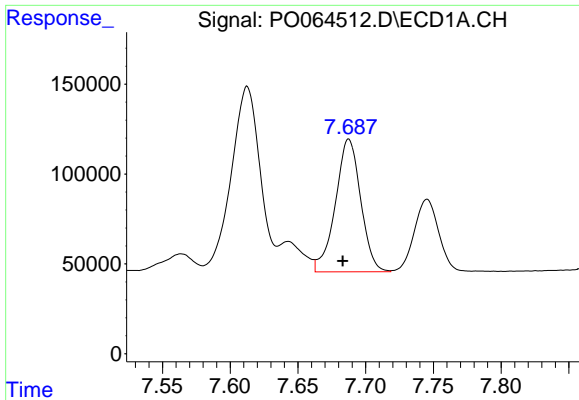
#31 AR-1260-1
 R.T.: 6.112 min
 Delta R.T.: 0.000 min
 Response: 1085038
 Conc: 618.18 ng/ml



#32 AR-1260-2
 R.T.: 7.330 min
 Delta R.T.: 0.005 min
 Response: 1270875
 Conc: 543.41 ng/ml



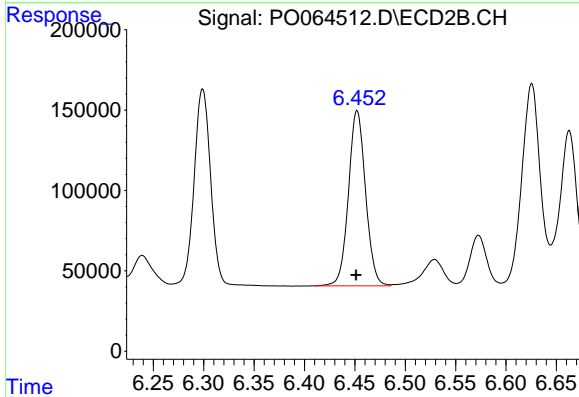
#32 AR-1260-2
 R.T.: 6.299 min
 Delta R.T.: 0.002 min
 Response: 1380583
 Conc: 620.55 ng/ml



#33 AR-1260-3

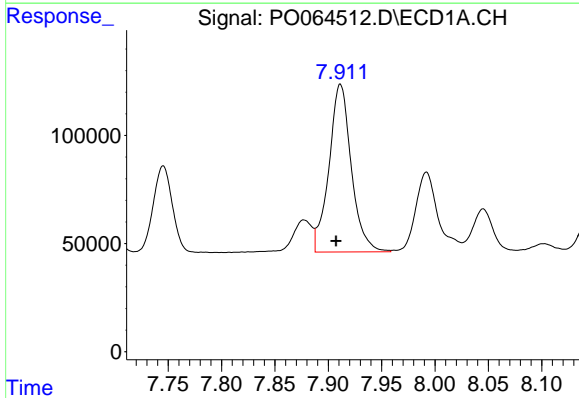
R.T.: 7.688 min
 Delta R.T.: 0.004 min
 Response: 960397
 Conc: 518.77 ng/ml

Instrument :
 ECD_O
 ClientSampled :
 AR1660CCC500



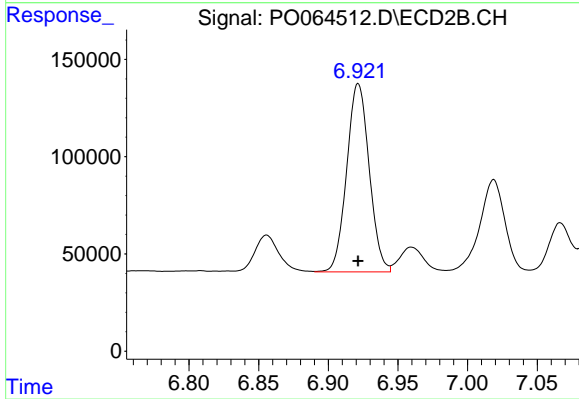
#33 AR-1260-3

R.T.: 6.452 min
 Delta R.T.: 0.001 min
 Response: 1286202
 Conc: 632.59 ng/ml



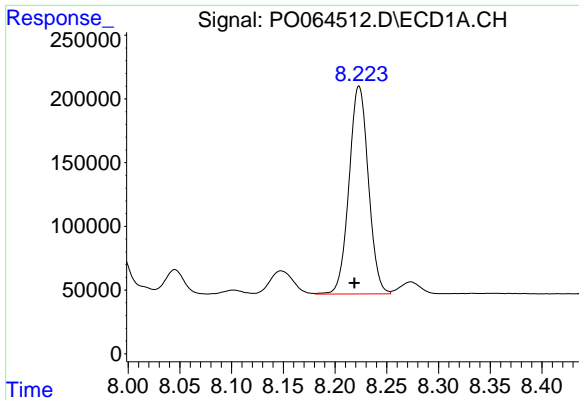
#34 AR-1260-4

R.T.: 7.911 min
 Delta R.T.: 0.004 min
 Response: 1129549
 Conc: 515.40 ng/ml



#34 AR-1260-4

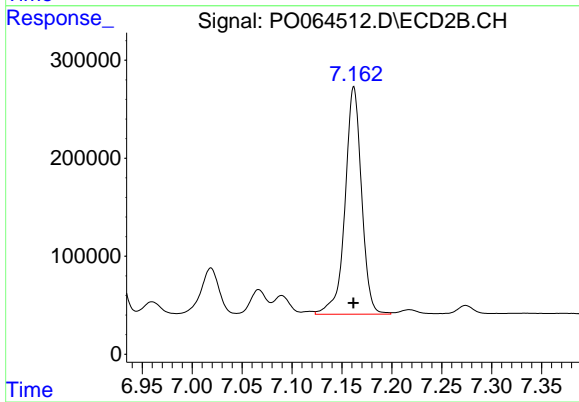
R.T.: 6.922 min
 Delta R.T.: 0.000 min
 Response: 1087554
 Conc: 586.36 ng/ml



#35 AR-1260-5

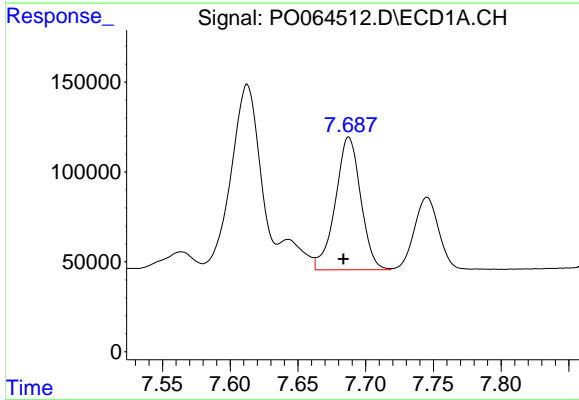
R.T.: 8.223 min
 Delta R.T.: 0.004 min
 Response: 2121807
 Conc: 480.59 ng/ml

Instrument :
 ECD_O
 ClientSampleId :
 AR1660CCC500



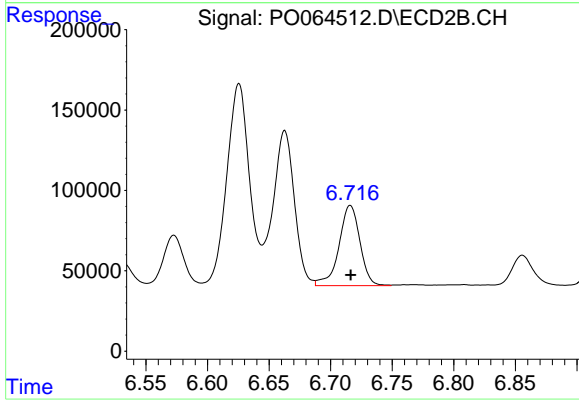
#35 AR-1260-5

R.T.: 7.162 min
 Delta R.T.: 0.000 min
 Response: 2671741
 Conc: 551.85 ng/ml



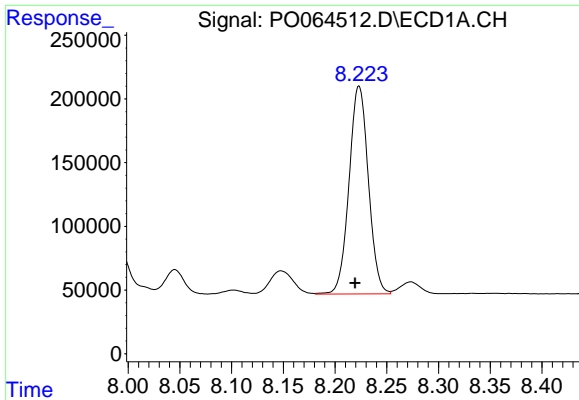
#36 AR-1262-1

R.T.: 7.688 min
 Delta R.T.: 0.004 min
 Response: 960397
 Conc: 321.67 ng/ml



#36 AR-1262-1

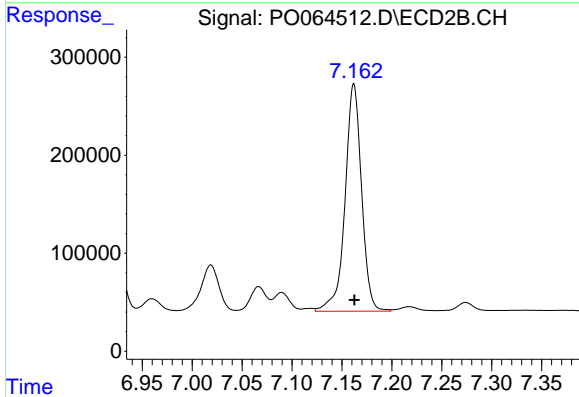
R.T.: 6.716 min
 Delta R.T.: 0.000 min
 Response: 593573
 Conc: 472.39 ng/ml



#37 AR-1262-2

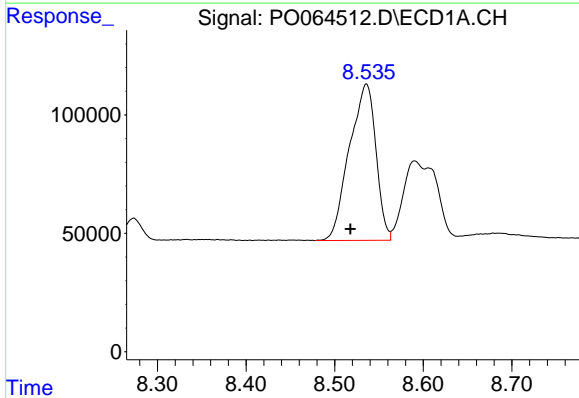
R.T.: 8.223 min
 Delta R.T.: 0.004 min
 Response: 2121807
 Conc: 384.82 ng/ml

Instrument :
 ECD_O
 ClientSampleId :
 AR1660CCC500



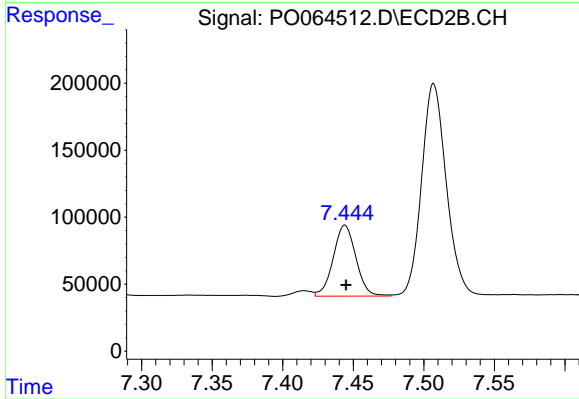
#37 AR-1262-2

R.T.: 7.162 min
 Delta R.T.: 0.000 min
 Response: 2671741
 Conc: 447.88 ng/ml



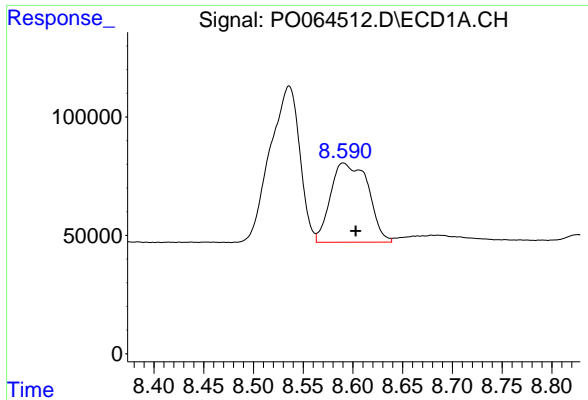
#38 AR-1262-3

R.T.: 8.536 min
 Delta R.T.: 0.018 min
 Response: 1374363
 Conc: 355.20 ng/ml



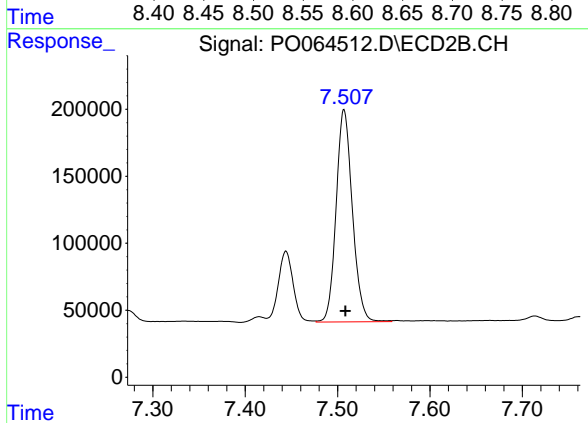
#38 AR-1262-3

R.T.: 7.444 min
 Delta R.T.: 0.000 min
 Response: 593320
 Conc: 254.51 ng/ml

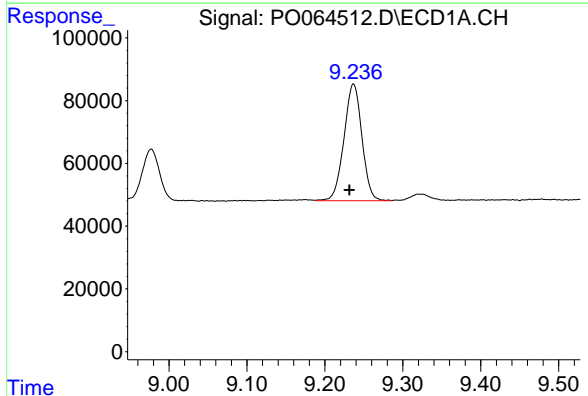


#39 AR-1262-4
 R.T.: 8.590 min
 Delta R.T.: -0.012 min
 Response: 880433
 Conc: 301.18 ng/ml

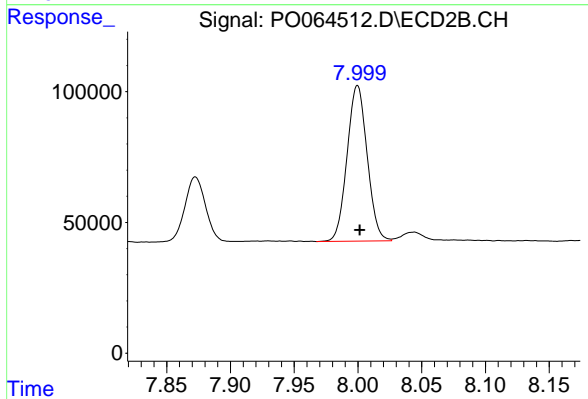
Instrument :
 ECD_O
 ClientSampleId :
 AR1660CCC500



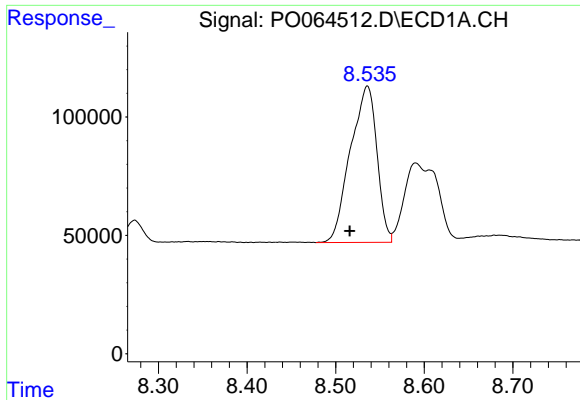
#39 AR-1262-4
 R.T.: 7.507 min
 Delta R.T.: -0.002 min
 Response: 1937311
 Conc: 435.05 ng/ml



#40 AR-1262-5
 R.T.: 9.237 min
 Delta R.T.: 0.005 min
 Response: 594844
 Conc: 283.41 ng/ml



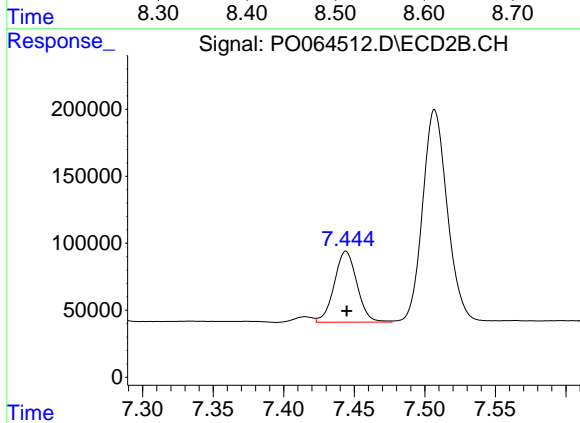
#40 AR-1262-5
 R.T.: 8.000 min
 Delta R.T.: -0.002 min
 Response: 652559
 Conc: 308.97 ng/ml



#41 AR-1268-1

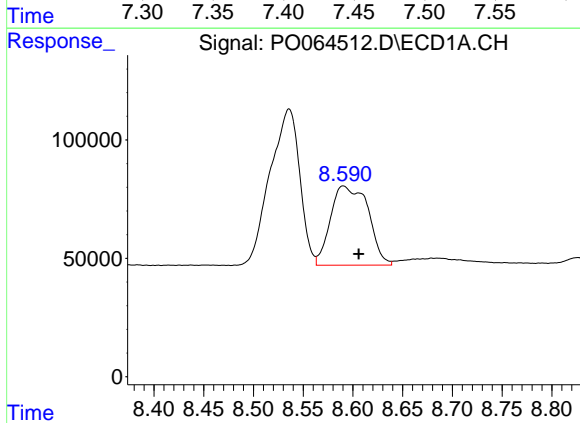
R.T.: 8.536 min
 Delta R.T.: 0.020 min
 Response: 1374363
 Conc: 210.80 ng/ml

Instrument :
 ECD_O
 ClientSampled :
 AR1660CCC500



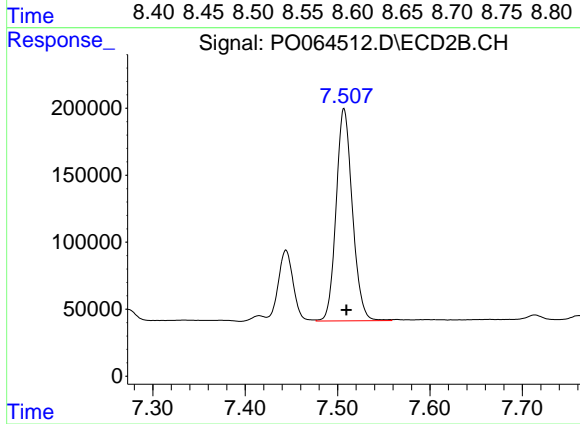
#41 AR-1268-1

R.T.: 7.444 min
 Delta R.T.: 0.000 min
 Response: 593320
 Conc: 84.98 ng/ml



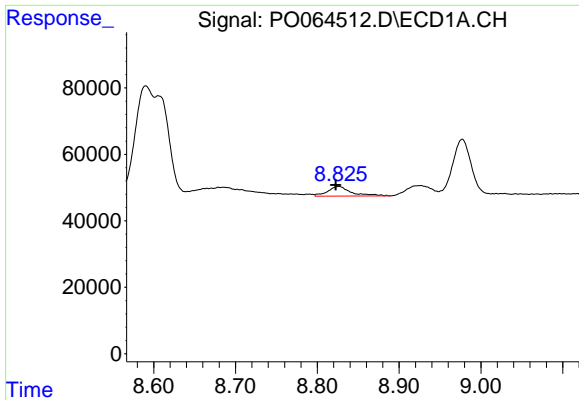
#42 AR-1268-2

R.T.: 8.590 min
 Delta R.T.: -0.016 min
 Response: 880433
 Conc: 145.73 ng/ml



#42 AR-1268-2

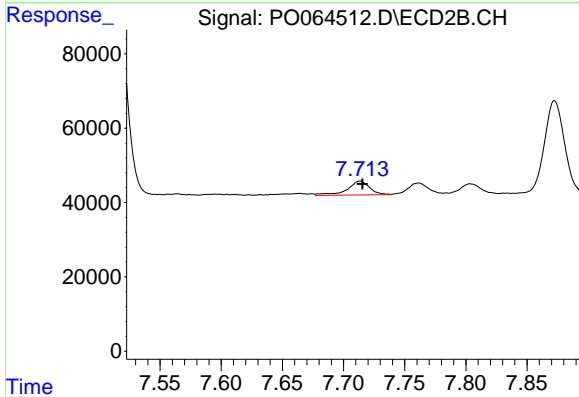
R.T.: 7.507 min
 Delta R.T.: -0.003 min
 Response: 1937311
 Conc: 302.59 ng/ml



#43 AR-1268-3

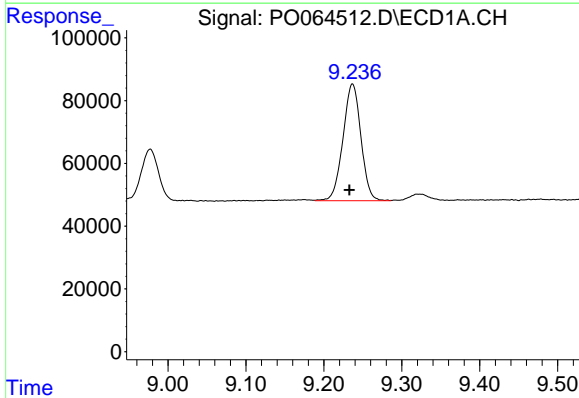
R.T.: 8.826 min
 Delta R.T.: 0.004 min
 Response: 58407
 Conc: 11.76 ng/ml

Instrument :
 ECD_O
ClientSampleId :
 AR1660CCC500



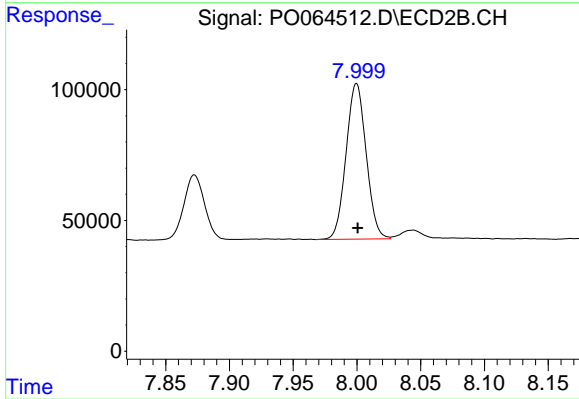
#43 AR-1268-3

R.T.: 7.713 min
 Delta R.T.: -0.002 min
 Response: 47810
 Conc: 9.13 ng/ml



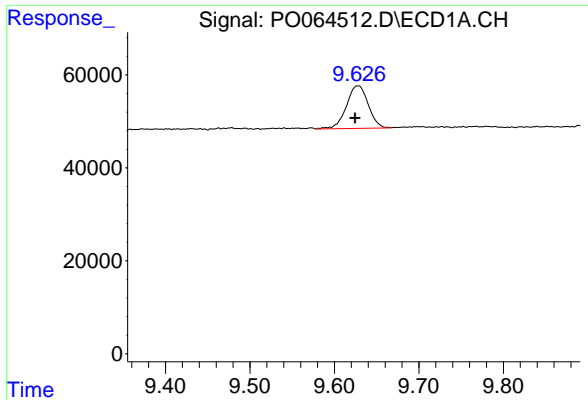
#44 AR-1268-4

R.T.: 9.237 min
 Delta R.T.: 0.004 min
 Response: 594844
 Conc: 254.24 ng/ml



#44 AR-1268-4

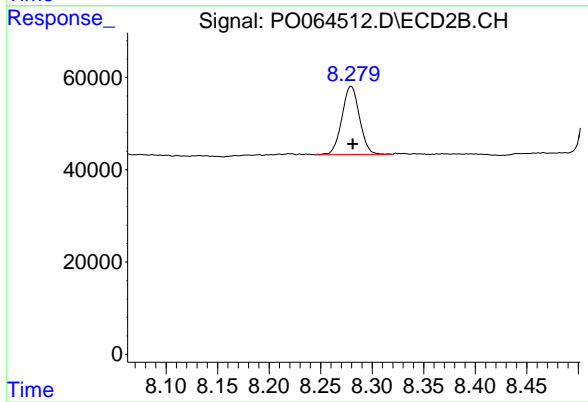
R.T.: 8.000 min
 Delta R.T.: 0.000 min
 Response: 652559
 Conc: 279.33 ng/ml



#45 AR-1268-5

R.T.: 9.628 min
Delta R.T.: 0.004 min
Response: 163548
Conc: 10.65 ng/ml

Instrument :
ECD_O
ClientSampleId :
AR1660CCC500



#45 AR-1268-5

R.T.: 8.280 min
Delta R.T.: -0.002 min
Response: 175732
Conc: 10.64 ng/ml