

Data Path : Z:\pestpcbsrv\HPCHEM1\ECD_0\Data\PO121019\
 Data File : P0064502.D
 Signal(s) : Signal #1: ECD1A.CH Signal #2: ECD2B.CH
 Acq On : 10 Dec 2019 15:15
 Operator : SM/AJ
 Sample : K6212-04 5X
 Misc :
 ALS Vial : 10 Sample Multiplier: 1

Instrument :
 ECD_0
 ClientSampleId :
 04-A-04-B-04-C

Integration File signal 1: autoint1.e
 Integration File signal 2: autoint2.e
 Quant Time: Dec 10 15:40:52 2019
 Quant Method : Z:\pestpcbsrv\HPCHEM1\ECD_0\methods\PO112719.M
 Quant Title : GC EXTRACTABLES
 QLast Update : Thu Nov 28 01:28:08 2019
 Response via : Initial Calibration
 Integrator: ChemStation 6890 Scale Mode: Small noise peaks clipped

Volume Inj. : 2 µl
 Signal #1 Phase : ZB-MR1 Signal #2 Phase: ZB-MR2
 Signal #1 Info : 30Mx0.32mmx 0.50µ Signal #2 Info : 30M x 0.32mm x 0.25µm

Compound	RT#1	RT#2	Resp#1	Resp#2	ng/ml	ng/ml

System Monitoring Compounds						
1) SA Tetrachlo...	4.316	3.562	126635	106010	4.276	4.457
2) SA Decachlor...	9.943	8.521	178563	180702	4.357	4.423
Target Compounds						
26) L6 AR-1254-1	6.326	5.433	80595	90615	49.381	46.106
27) L6 AR-1254-2	6.544	5.579	215817	151934	82.788	84.837
28) L6 AR-1254-3	6.909	5.981	308145	327247	106.763	105.740
29) L6 AR-1254-4	7.193	6.208	292534	252001	127.736	122.138
30) L6 AR-1254-5	7.610	6.624	373540	464689	146.185	154.065

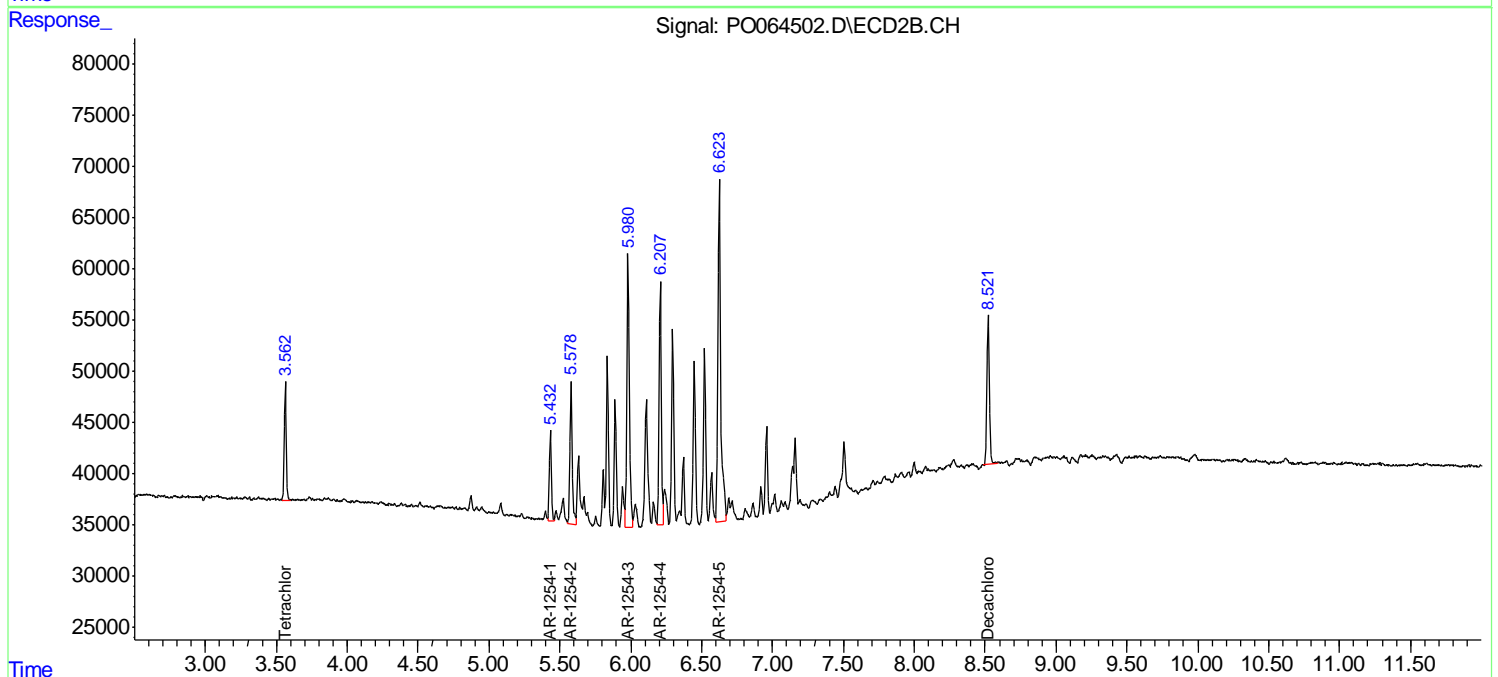
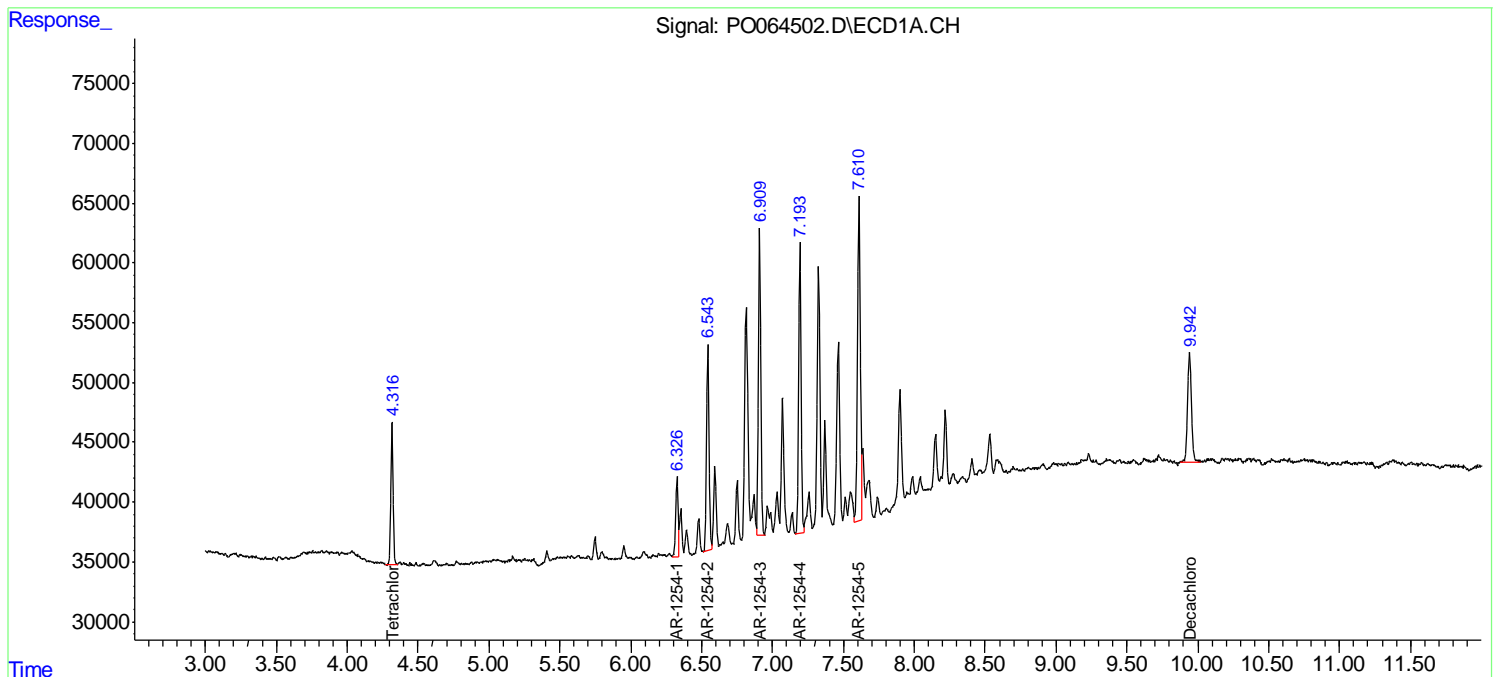
(f)=RT Delta > 1/2 Window (#)=Amounts differ by > 25% (m)=manual int.

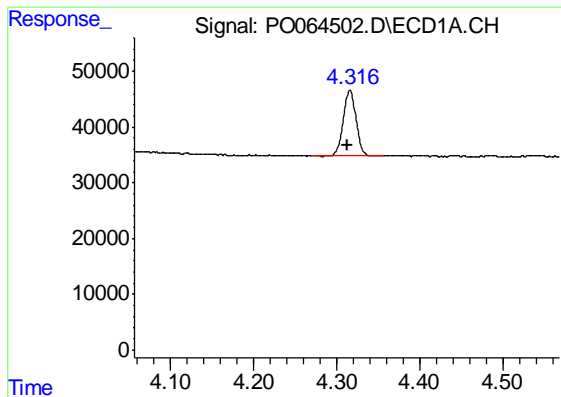
Data Path : Z:\pestpcbsrv\HPCHEM1\ECD_O\Data\PO121019\
 Data File : PO064502.D
 Signal(s) : Signal #1: ECD1A.CH Signal #2: ECD2B.CH
 Acq On : 10 Dec 2019 15:15
 Operator : SM/AJ
 Sample : K6212-04 5X
 Misc :
 ALS Vial : 10 Sample Multiplier: 1

Instrument :
 ECD_O
 ClientSampled :
 04-A-04-B-04-C

Integration File signal 1: autoint1.e
 Integration File signal 2: autoint2.e
 Quant Time: Dec 10 15:40:52 2019
 Quant Method : Z:\pestpcbsrv\HPCHEM1\ECD_O\methods\PO112719.M
 Quant Title : GC EXTRACTABLES
 QLast Update : Thu Nov 28 01:28:08 2019
 Response via : Initial Calibration
 Integrator: ChemStation 6890 Scale Mode: Small noise peaks clipped

Volume Inj. : 2 µl
 Signal #1 Phase : ZB-MR1 Signal #2 Phase: ZB-MR2
 Signal #1 Info : 30Mx0.32mmx 0.50µ Signal #2 Info : 30M x 0.32mm x 0.25µm

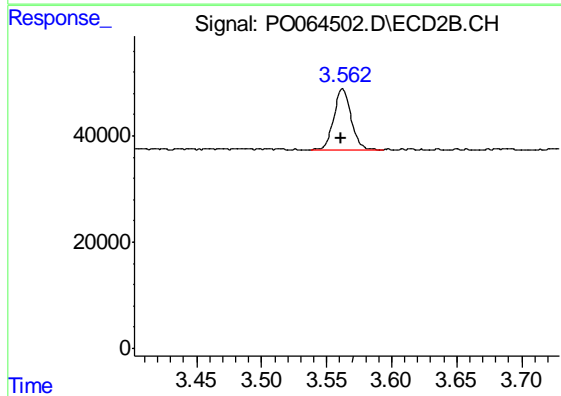




#1 Tetrachloro-m-xylene

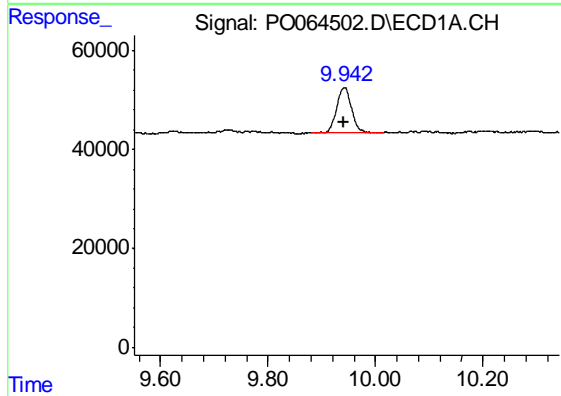
R.T.: 4.316 min
 Delta R.T.: 0.003 min
 Response: 126635
 Conc: 4.28 ng/ml

Instrument :
 ECD_O
 ClientSampleId :
 04-A-04-B-04-C



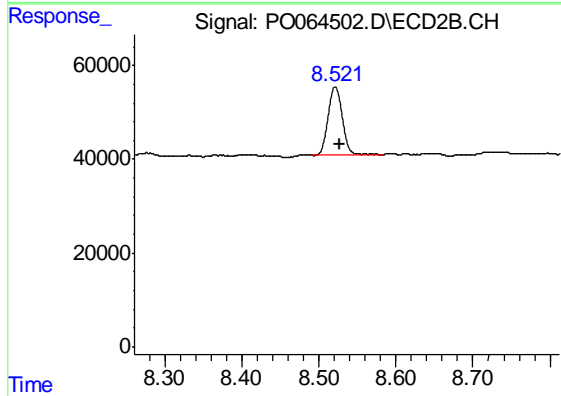
#1 Tetrachloro-m-xylene

R.T.: 3.562 min
 Delta R.T.: 0.001 min
 Response: 106010
 Conc: 4.46 ng/ml



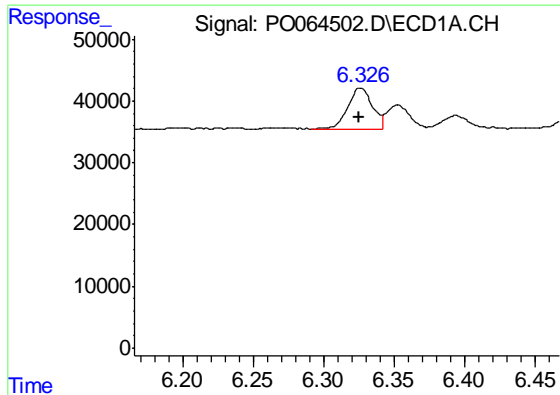
#2 Decachlorobiphenyl

R.T.: 9.943 min
 Delta R.T.: 0.001 min
 Response: 178563
 Conc: 4.36 ng/ml



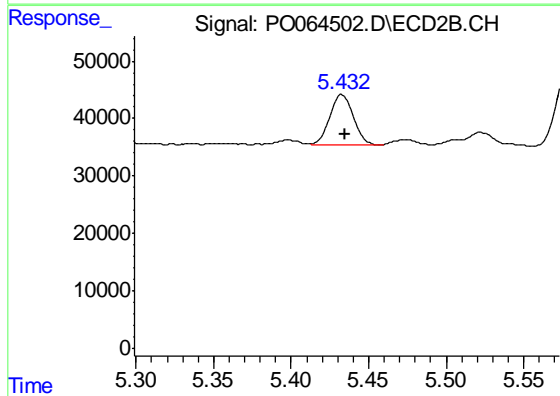
#2 Decachlorobiphenyl

R.T.: 8.521 min
 Delta R.T.: -0.005 min
 Response: 180702
 Conc: 4.42 ng/ml

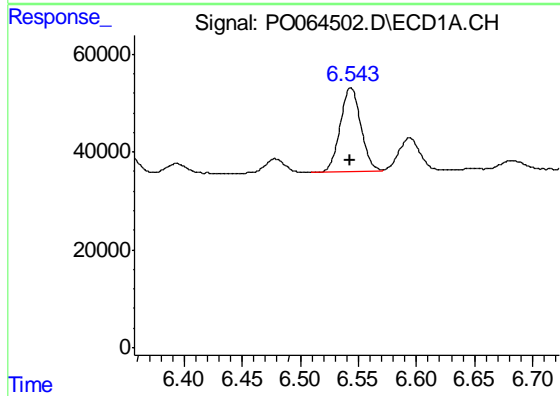


#26 AR-1254-1
 R.T.: 6.326 min
 Delta R.T.: 0.002 min
 Response: 80595
 Conc: 49.38 ng/ml

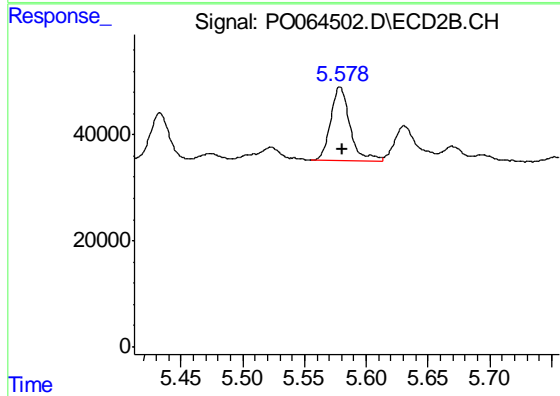
Instrument :
 ECD_O
 ClientSampleId :
 04-A-04-B-04-C



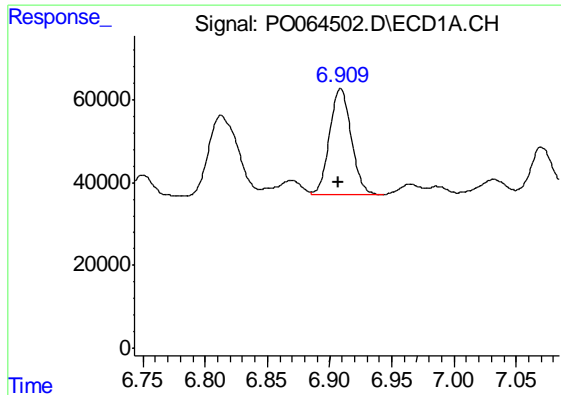
#26 AR-1254-1
 R.T.: 5.433 min
 Delta R.T.: -0.002 min
 Response: 90615
 Conc: 46.11 ng/ml



#27 AR-1254-2
 R.T.: 6.544 min
 Delta R.T.: 0.001 min
 Response: 215817
 Conc: 82.79 ng/ml



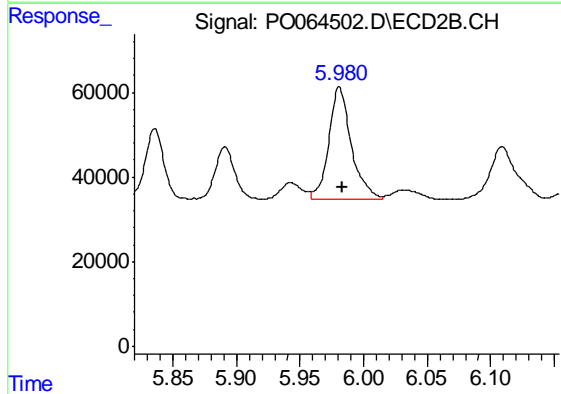
#27 AR-1254-2
 R.T.: 5.579 min
 Delta R.T.: -0.002 min
 Response: 151934
 Conc: 84.84 ng/ml



#28 AR-1254-3

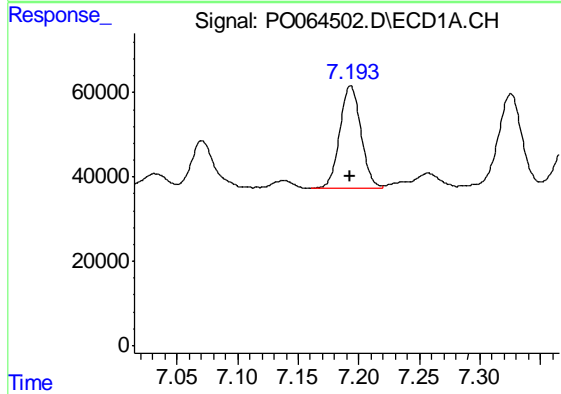
R.T.: 6.909 min
 Delta R.T.: 0.001 min
 Response: 308145
 Conc: 106.76 ng/ml

Instrument :
 ECD_O
 ClientSampleId :
 04-A-04-B-04-C



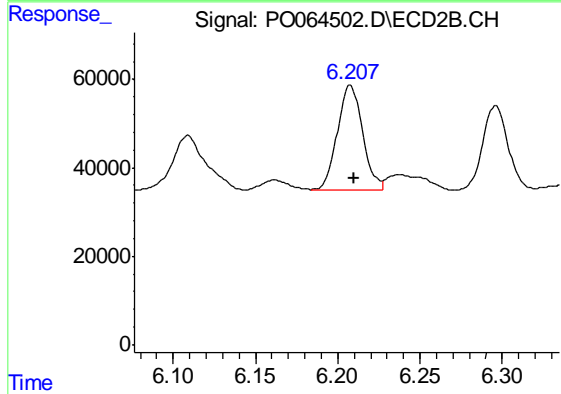
#28 AR-1254-3

R.T.: 5.981 min
 Delta R.T.: -0.002 min
 Response: 327247
 Conc: 105.74 ng/ml



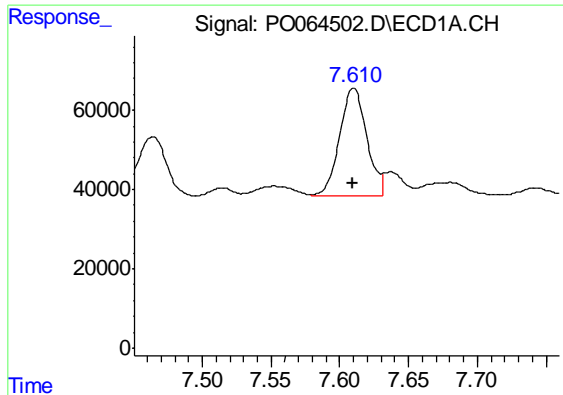
#29 AR-1254-4

R.T.: 7.193 min
 Delta R.T.: 0.000 min
 Response: 292534
 Conc: 127.74 ng/ml



#29 AR-1254-4

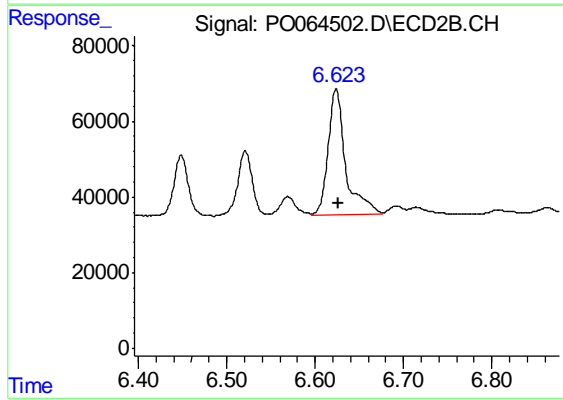
R.T.: 6.208 min
 Delta R.T.: -0.002 min
 Response: 252001
 Conc: 122.14 ng/ml



#30 AR-1254-5

R.T.: 7.610 min
Delta R.T.: 0.001 min
Response: 373540
Conc: 146.18 ng/ml

Instrument :
ECD_O
ClientSampleId :
04-A-04-B-04-C



#30 AR-1254-5

R.T.: 6.624 min
Delta R.T.: -0.002 min
Response: 464689
Conc: 154.06 ng/ml