

Data Path : Z:\pestpcbsrv\HPCHEM1\ECD\_0\Data\PO121118\  
 Data File : PO052421.D  
 Signal(s) : Signal #1: ECD1A.CH Signal #2: ECD2B.CH  
 Acq On : 11 Dec 2018 12:14  
 Operator : SM/SJ  
 Sample : J6277-13DL 4X  
 Misc :  
 ALS Vial : 10 Sample Multiplier: 1

Instrument :  
 ECD\_0  
 ClientSampleId :

Integration File signal 1: autoint1.e  
 Integration File signal 2: autoint2.e  
 Quant Time: Dec 12 01:38:38 2018  
 Quant Method : Z:\pestpcbsrv\HPCHEM1\ECD\_0\methods\PO120318.M  
 Quant Title : GC EXTRACTABLES  
 QLast Update : Tue Dec 04 03:10:39 2018  
 Response via : Initial Calibration  
 Integrator: ChemStation 6890 Scale Mode: Small noise peaks clipped

Volume Inj. : 2 µl  
 Signal #1 Phase : ZB-MR1 Signal #2 Phase: ZB-MR2  
 Signal #1 Info : 30Mx0.32mmx 0.50µ Signal #2 Info : 30M x 0.32mm x 0.25µm

Compound	RT#1	RT#2	Resp#1	Resp#2	ng/ml	ng/ml
System Monitoring Compounds						
1) SA Tetrachlo...	4.266	3.284	4235861	1052381	4.920	4.719
2) SA Decachlor...	9.834	7.979	133043	852490	0.266	4.089 #
Target Compounds						
5) L1 AR-1016-3	0.000	4.506	0	1409444	N.D.	246.596 #
6) L1 AR-1016-4	5.692	4.506	3522449	1409444	211.318	274.089 #
7) L1 AR-1016-5	5.894	4.701	1393863	546477	87.124	79.057
13) L3 AR-1232-3	0.000	4.506	0	1409444	N.D.	581.571 #
14) L3 AR-1232-4	5.692	4.541	3522449	355499	489.220	167.352 #
15) L3 AR-1232-5	5.692	4.701	3522449	546477	752.672	218.011 #
18) L4 AR-1242-3	0.000	4.506	0	1409444	N.D.	295.360 #
19) L4 AR-1242-4	5.692	4.541	3522449	355499	261.130	77.779 #
20) L4 AR-1242-5	6.336	5.068	2269127	398693	160.923	62.446 #
22) L5 AR-1248-2	5.692	4.506	3522449	1409444	188.557	215.348
23) L5 AR-1248-3	5.894	4.541	1393863	355499	66.078	54.717
24) L5 AR-1248-4	6.336	4.701	2269127	546477	98.834	66.217 #
25) L5 AR-1248-5	6.336	5.097	2269127	570263	102.240	70.250 #
26) L6 AR-1254-1	6.296	5.030	2909917	4196458	112.618	300.696 #
27) L6 AR-1254-2	6.483	5.172	14376441	5152462	360.363	409.619
28) L6 AR-1254-3	6.849	5.550	18062797	8770214	430.358	447.286
29) L6 AR-1254-4	7.133	5.801	12263333	1314047	428.258	116.067 #
30) L6 AR-1254-5	7.575	6.168	3218576	9698225	109.303	575.444 #
31) L7 AR-1260-1	7.008	5.673	8165149	4528286	276.633	323.868
32) L7 AR-1260-2	7.264	5.857	11043472	4515847	313.489	270.483
33) L7 AR-1260-3	7.613	6.069	2820069	2580746	116.592	162.961 #
34) L7 AR-1260-4	7.838	6.486	6076527	2384333	248.343	228.435
35) L7 AR-1260-5	8.152	6.691	2693973	1100690	54.829	45.521
36) L8 AR-1262-1	7.613	6.232	2820069	506294	69.256	27.658 #
37) L8 AR-1262-2	8.152	6.691	2693973	1100690	41.531	38.060
38) L8 AR-1262-3	8.465	6.998	1908128	370759	46.060	31.523 #
39) L8 AR-1262-4	8.513	7.021	806210	1210976	24.266	57.862 #
41) L9 AR-1268-1	8.465	6.998	1908128	370759	20.461	9.383 #
42) L9 AR-1268-2	8.513	7.021	806210	1210976	9.774	32.296 #

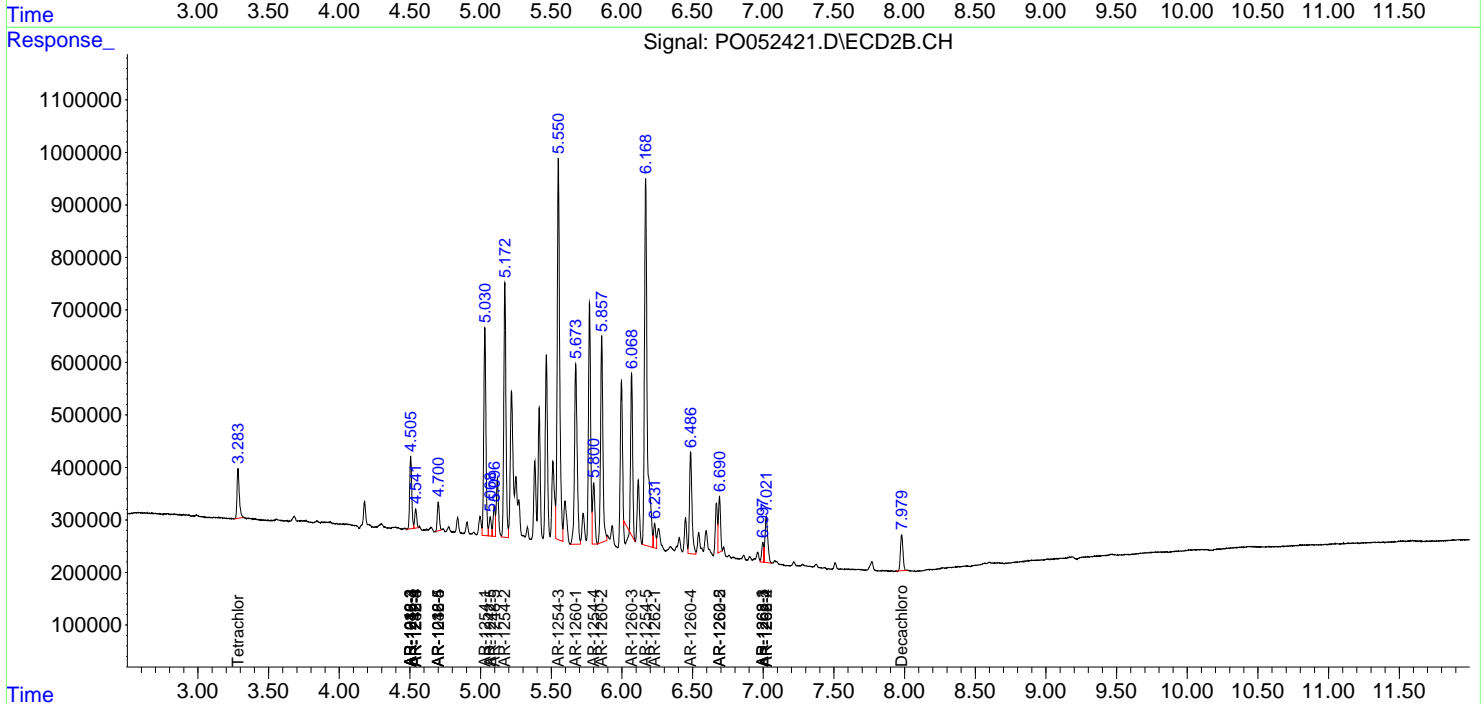
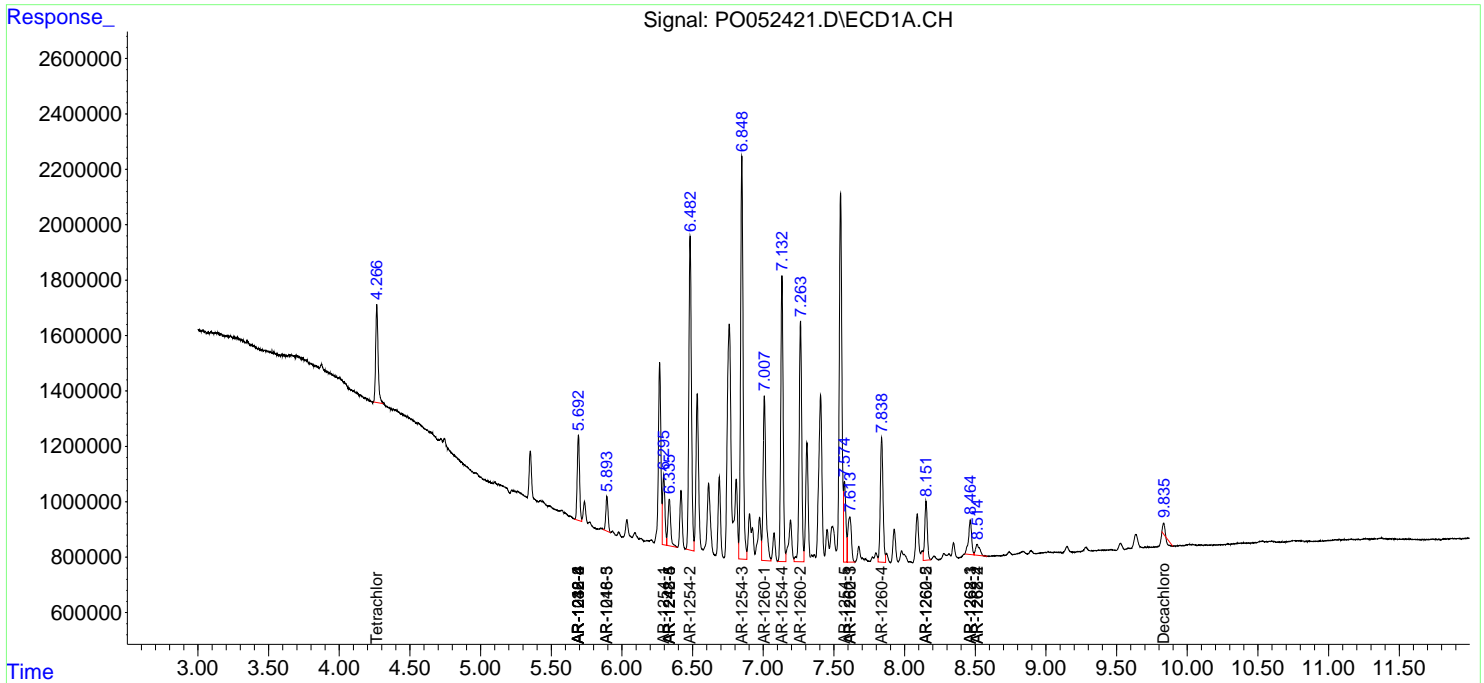
(f)=RT Delta > 1/2 Window (#)=Amounts differ by > 25% (m)=manual int.

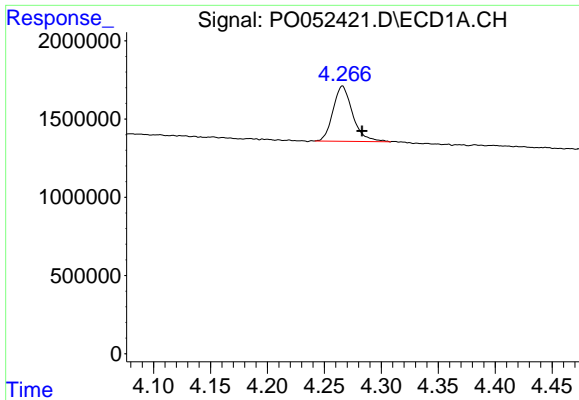
Data Path : Z:\pestpcbsrv\HPCHEM1\ECD\_O\Data\PO121118\  
 Data File : PO052421.D  
 Signal(s) : Signal #1: ECD1A.CH Signal #2: ECD2B.CH  
 Acq On : 11 Dec 2018 12:14  
 Operator : SM/SJ  
 Sample : J6277-13DL 4X  
 Misc :  
 ALS Vial : 10 Sample Multiplier: 1

Instrument :  
 ECD\_O  
 ClientSampled :

Integration File signal 1: autoint1.e  
 Integration File signal 2: autoint2.e  
 Quant Time: Dec 12 01:38:38 2018  
 Quant Method : Z:\pestpcbsrv\HPCHEM1\ECD\_O\methods\PO120318.M  
 Quant Title : GC EXTRACTABLES  
 QLast Update : Tue Dec 04 03:10:39 2018  
 Response via : Initial Calibration  
 Integrator: ChemStation 6890 Scale Mode: Small noise peaks clipped

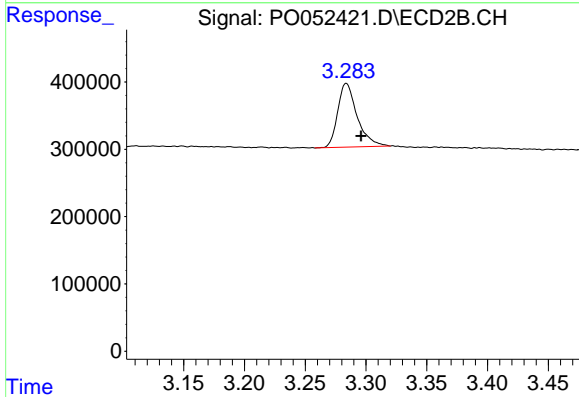
Volume Inj. : 2 µl  
 Signal #1 Phase : ZB-MR1 Signal #2 Phase: ZB-MR2  
 Signal #1 Info : 30Mx0.32mmx 0.50µ Signal #2 Info : 30M x 0.32mm x 0.25µm



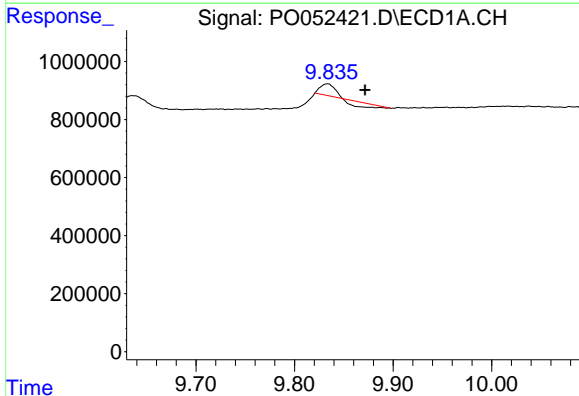


#1 Tetrachloro-m-xylene  
 R.T.: 4.266 min  
 Delta R.T.: -0.017 min  
 Response: 4235861  
 Conc: 4.92 ng/ml

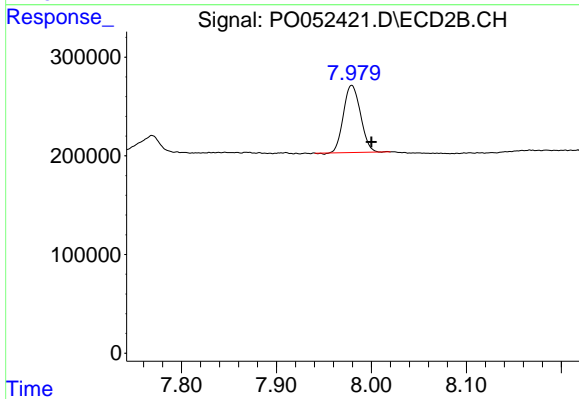
Instrument :  
 ECD\_O  
 ClientSampleId :



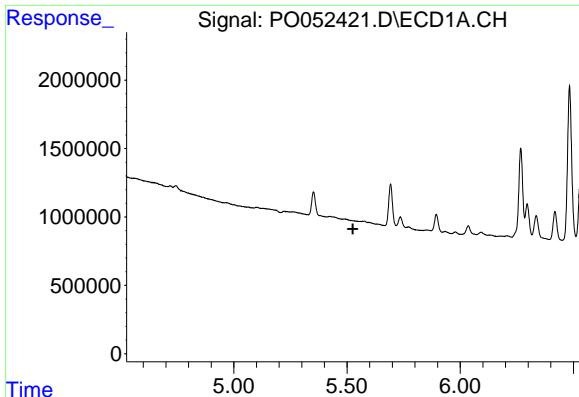
#1 Tetrachloro-m-xylene  
 R.T.: 3.284 min  
 Delta R.T.: -0.012 min  
 Response: 1052381  
 Conc: 4.72 ng/ml



#2 Decachlorobiphenyl  
 R.T.: 9.834 min  
 Delta R.T.: -0.038 min  
 Response: 133043  
 Conc: 0.27 ng/ml



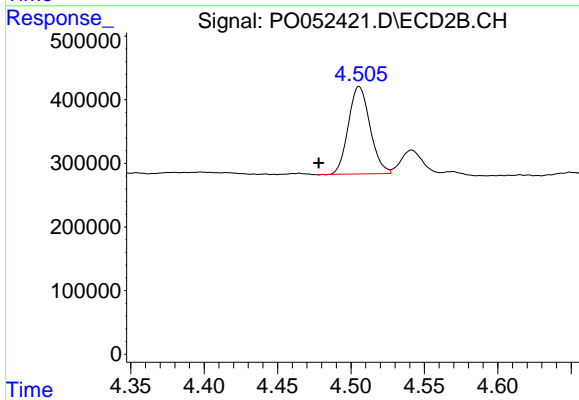
#2 Decachlorobiphenyl  
 R.T.: 7.979 min  
 Delta R.T.: -0.021 min  
 Response: 852490  
 Conc: 4.09 ng/ml



#5 AR-1016-3

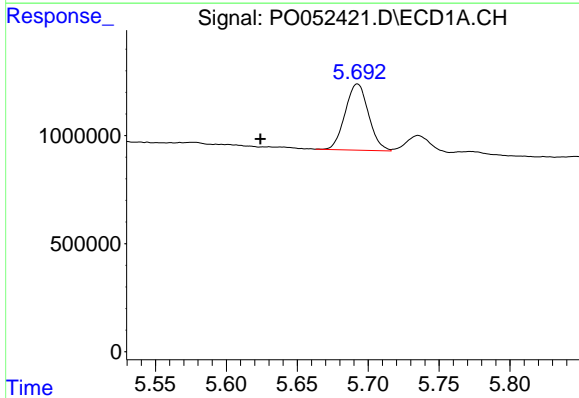
R.T.: 0.000 min  
 Exp R.T.: 5.526 min  
 Response: 0  
 Conc: N.D.

Instrument :  
 ECD\_O  
 ClientSampleId :



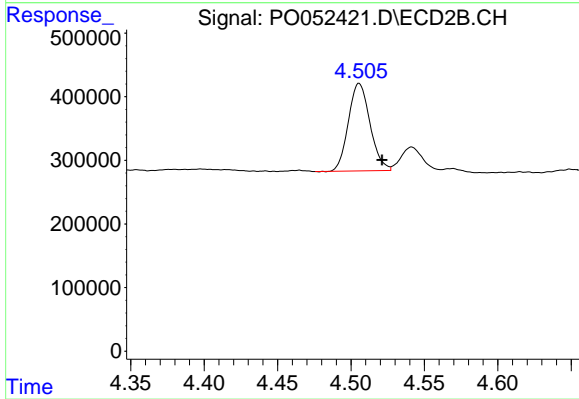
#5 AR-1016-3

R.T.: 4.506 min  
 Delta R.T.: 0.028 min  
 Response: 1409444  
 Conc: 246.60 ng/ml



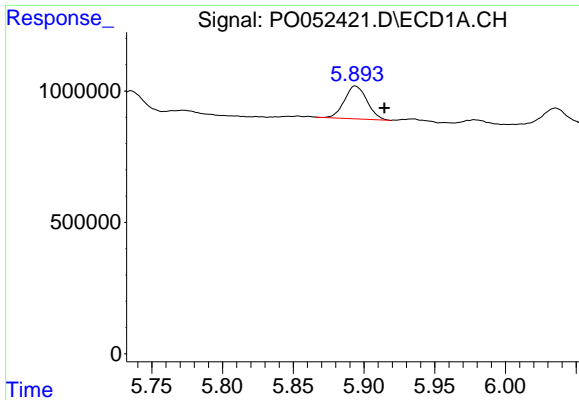
#6 AR-1016-4

R.T.: 5.692 min  
 Delta R.T.: 0.068 min  
 Response: 3522449  
 Conc: 211.32 ng/ml



#6 AR-1016-4

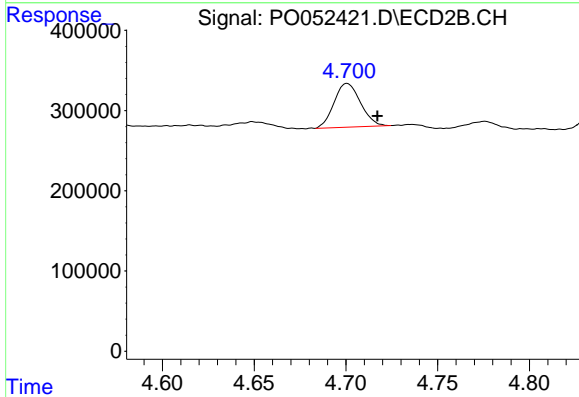
R.T.: 4.506 min  
 Delta R.T.: -0.016 min  
 Response: 1409444  
 Conc: 274.09 ng/ml



#7 AR-1016-5

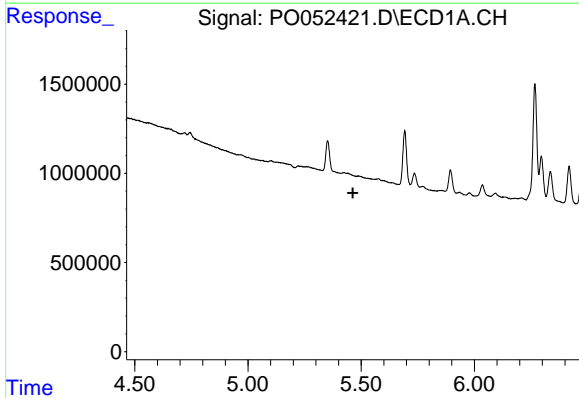
R.T.: 5.894 min  
 Delta R.T.: -0.021 min  
 Response: 1393863  
 Conc: 87.12 ng/ml

Instrument :  
 ECD\_O  
 ClientSampleId :



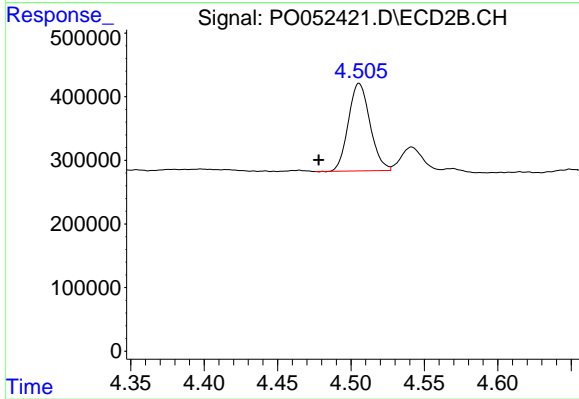
#7 AR-1016-5

R.T.: 4.701 min  
 Delta R.T.: -0.016 min  
 Response: 546477  
 Conc: 79.06 ng/ml



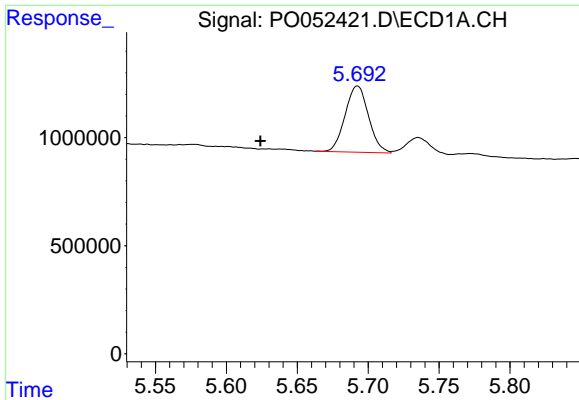
#13 AR-1232-3

R.T.: 0.000 min  
 Exp R.T. : 5.464 min  
 Response: 0  
 Conc: N.D.



#13 AR-1232-3

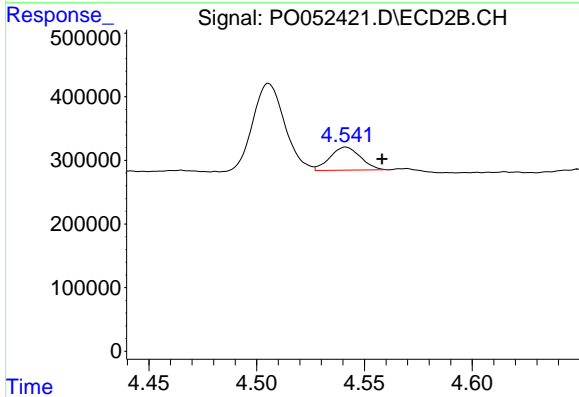
R.T.: 4.506 min  
 Delta R.T.: 0.028 min  
 Response: 1409444  
 Conc: 581.57 ng/ml



#14 AR-1232-4

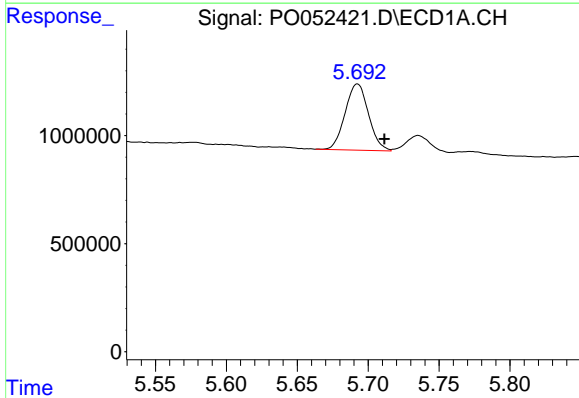
R.T.: 5.692 min  
 Delta R.T.: 0.068 min  
 Response: 3522449  
 Conc: 489.22 ng/ml

Instrument :  
 ECD\_O  
 ClientSampleId :



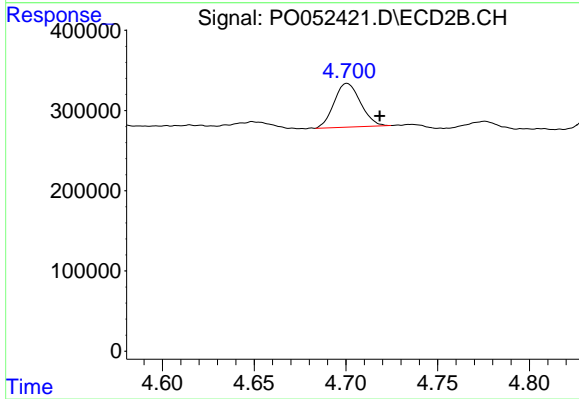
#14 AR-1232-4

R.T.: 4.541 min  
 Delta R.T.: -0.017 min  
 Response: 355499  
 Conc: 167.35 ng/ml



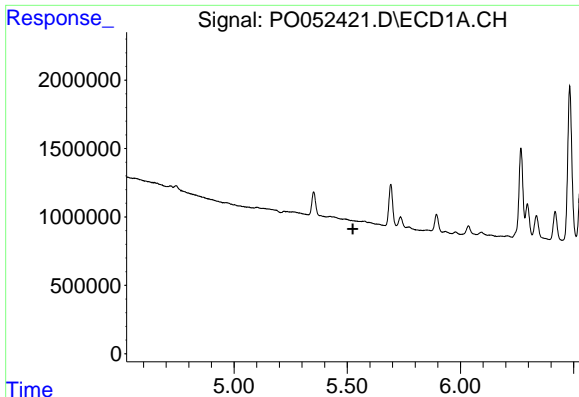
#15 AR-1232-5

R.T.: 5.692 min  
 Delta R.T.: -0.019 min  
 Response: 3522449  
 Conc: 752.67 ng/ml



#15 AR-1232-5

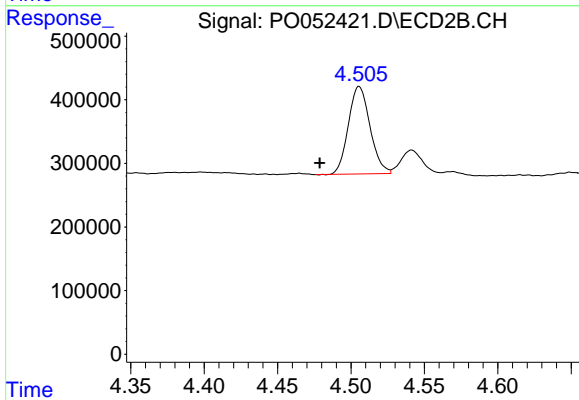
R.T.: 4.701 min  
 Delta R.T.: -0.018 min  
 Response: 546477  
 Conc: 218.01 ng/ml



#18 AR-1242-3

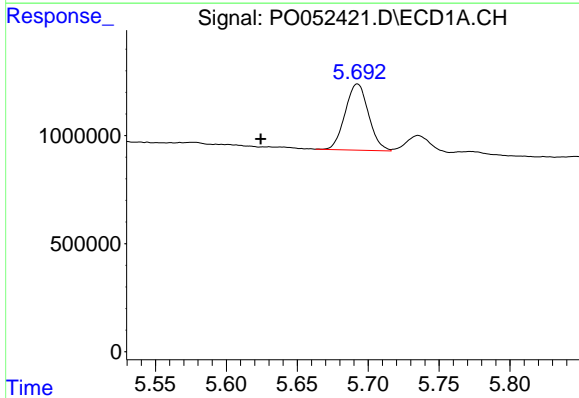
R.T.: 0.000 min  
 Exp R.T.: 5.525 min  
 Response: 0  
 Conc: N.D.

Instrument :  
 ECD\_O  
 ClientSampleId :



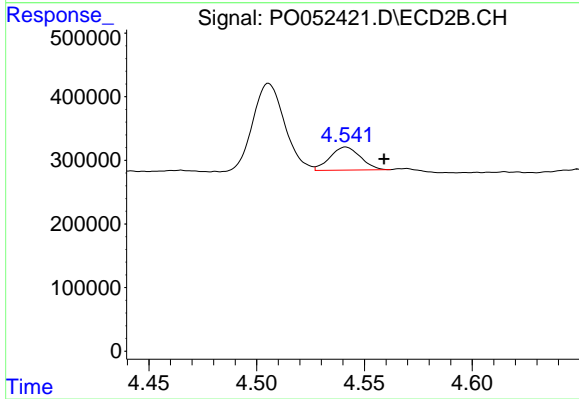
#18 AR-1242-3

R.T.: 4.506 min  
 Delta R.T.: 0.027 min  
 Response: 1409444  
 Conc: 295.36 ng/ml



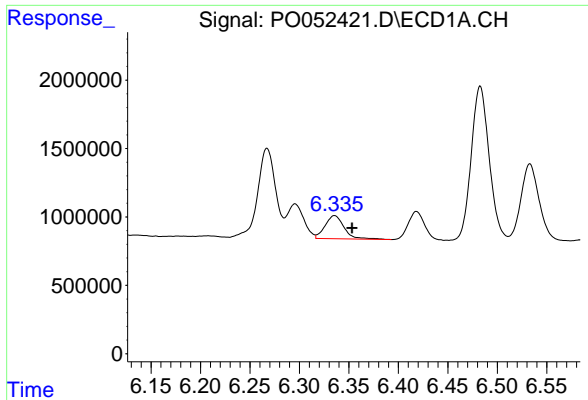
#19 AR-1242-4

R.T.: 5.692 min  
 Delta R.T.: 0.068 min  
 Response: 3522449  
 Conc: 261.13 ng/ml



#19 AR-1242-4

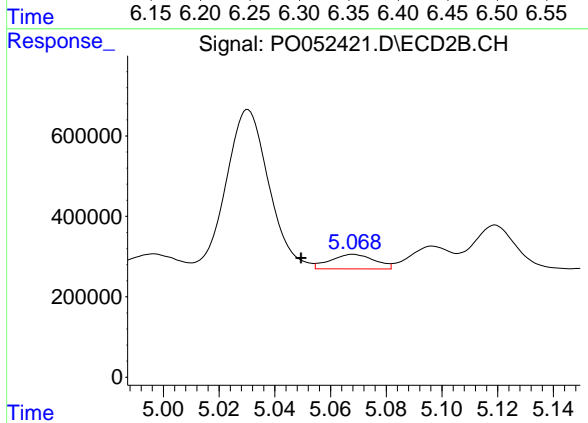
R.T.: 4.541 min  
 Delta R.T.: -0.018 min  
 Response: 355499  
 Conc: 77.78 ng/ml



#20 AR-1242-5

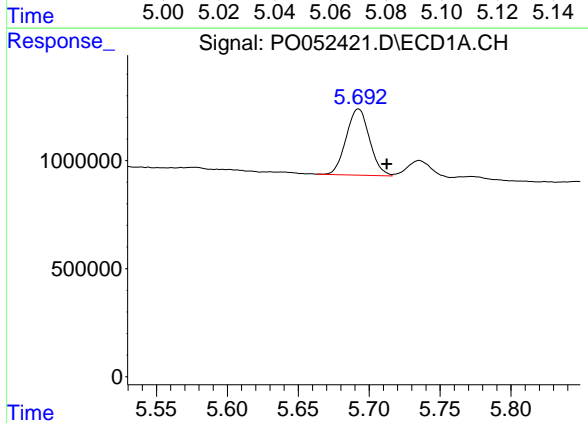
R.T.: 6.336 min  
 Delta R.T.: -0.018 min  
 Response: 2269127  
 Conc: 160.92 ng/ml

Instrument :  
 ECD\_O  
 ClientSampled :



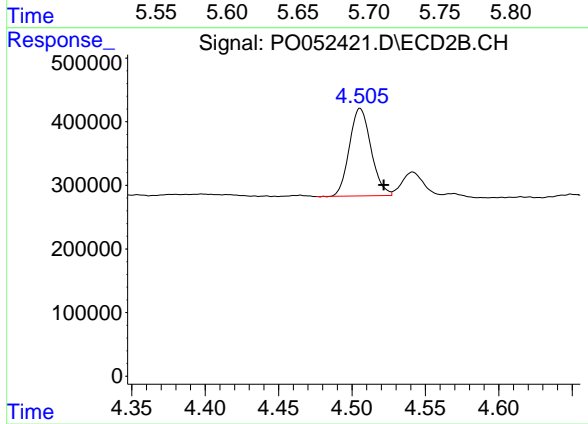
#20 AR-1242-5

R.T.: 5.068 min  
 Delta R.T.: 0.019 min  
 Response: 398693  
 Conc: 62.45 ng/ml



#22 AR-1248-2

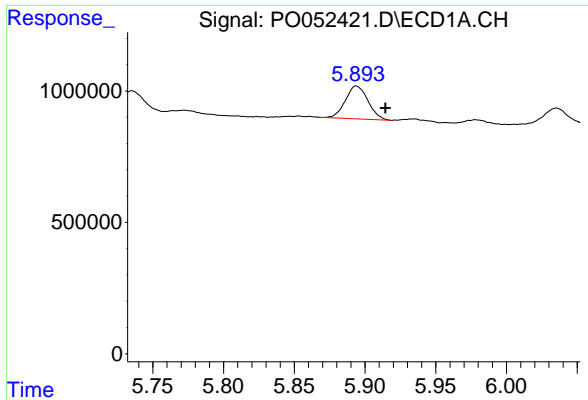
R.T.: 5.692 min  
 Delta R.T.: -0.020 min  
 Response: 3522449  
 Conc: 188.56 ng/ml



#22 AR-1248-2

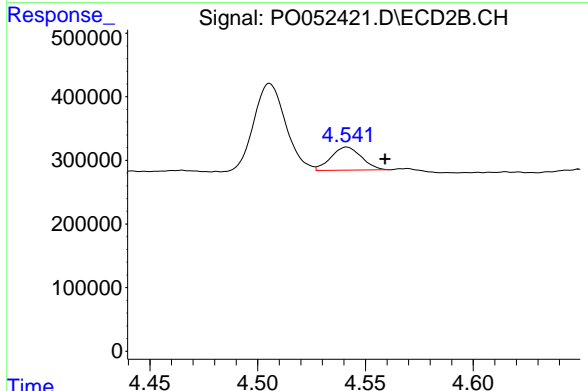
R.T.: 4.506 min  
 Delta R.T.: -0.016 min  
 Response: 1409444  
 Conc: 215.35 ng/ml



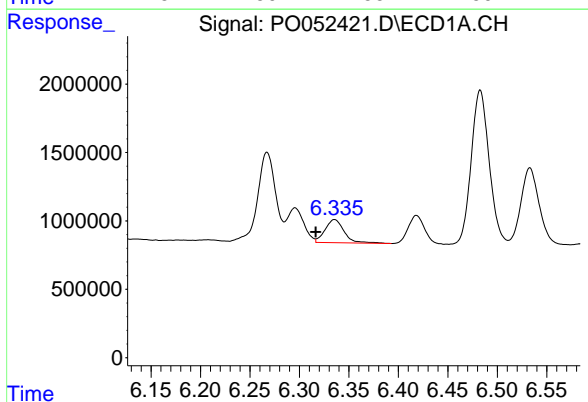


#23 AR-1248-3  
 R.T.: 5.894 min  
 Delta R.T.: -0.021 min  
 Response: 1393863  
 Conc: 66.08 ng/ml

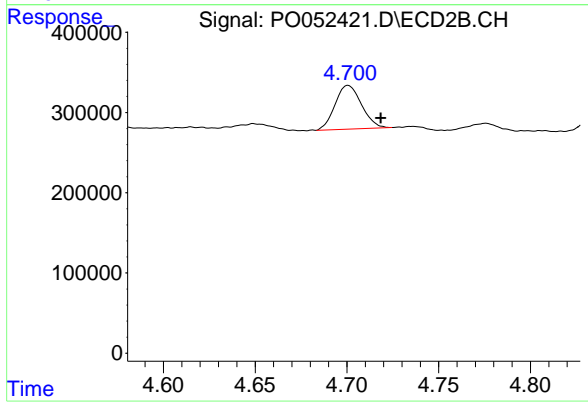
Instrument :  
 ECD\_O  
 ClientSampleId :



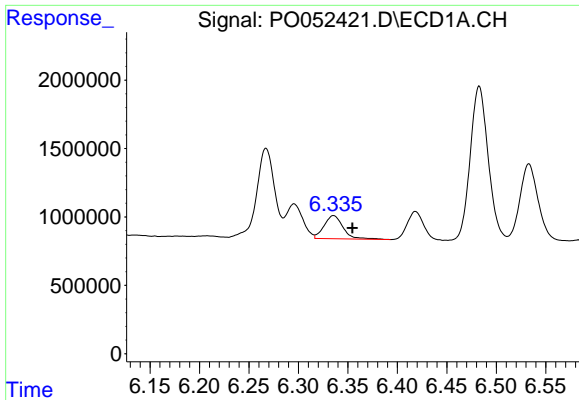
#23 AR-1248-3  
 R.T.: 4.541 min  
 Delta R.T.: -0.018 min  
 Response: 355499  
 Conc: 54.72 ng/ml



#24 AR-1248-4  
 R.T.: 6.336 min  
 Delta R.T.: 0.019 min  
 Response: 2269127  
 Conc: 98.83 ng/ml



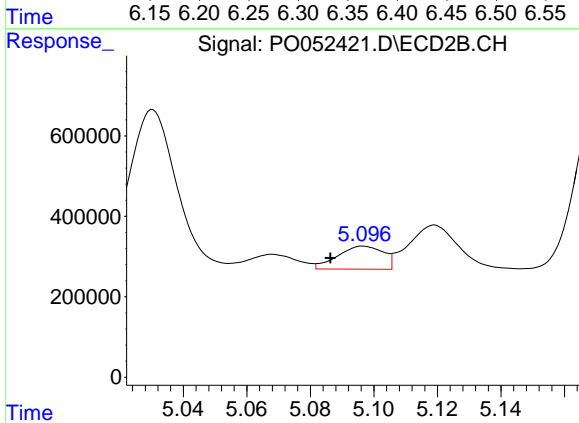
#24 AR-1248-4  
 R.T.: 4.701 min  
 Delta R.T.: -0.018 min  
 Response: 546477  
 Conc: 66.22 ng/ml



#25 AR-1248-5

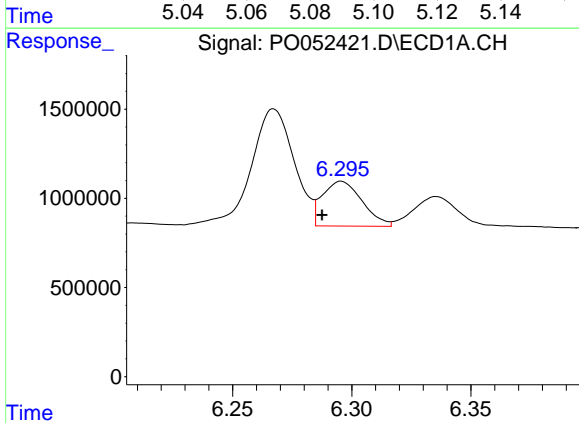
R.T.: 6.336 min  
 Delta R.T.: -0.019 min  
 Response: 2269127  
 Conc: 102.24 ng/ml

Instrument :  
 ECD\_O  
 ClientSampleId :



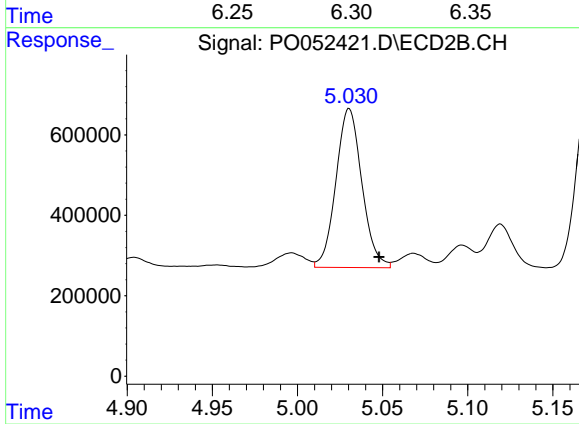
#25 AR-1248-5

R.T.: 5.097 min  
 Delta R.T.: 0.010 min  
 Response: 570263  
 Conc: 70.25 ng/ml



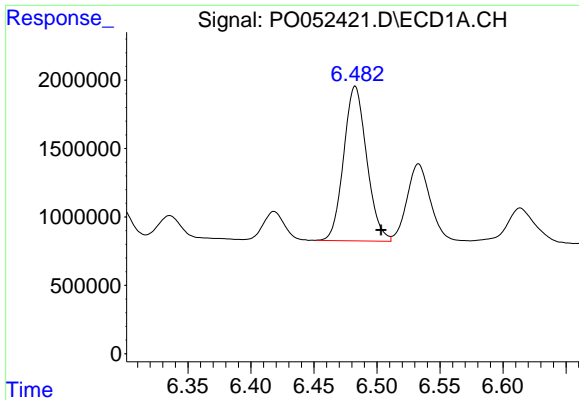
#26 AR-1254-1

R.T.: 6.296 min  
 Delta R.T.: 0.008 min  
 Response: 2909917  
 Conc: 112.62 ng/ml



#26 AR-1254-1

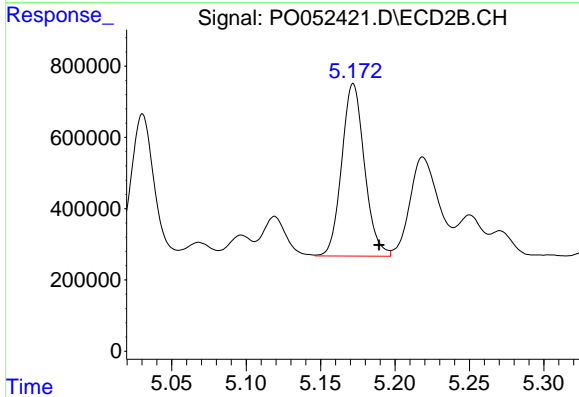
R.T.: 5.030 min  
 Delta R.T.: -0.018 min  
 Response: 4196458  
 Conc: 300.70 ng/ml



#27 AR-1254-2

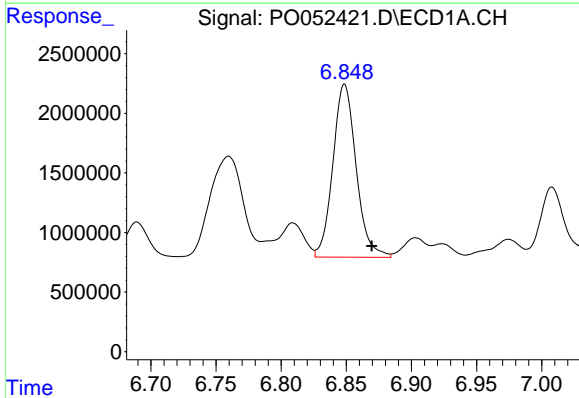
R.T.: 6.483 min  
 Delta R.T.: -0.021 min  
 Response: 14376441  
 Conc: 360.36 ng/ml

Instrument :  
 ECD\_O  
 ClientSampled :



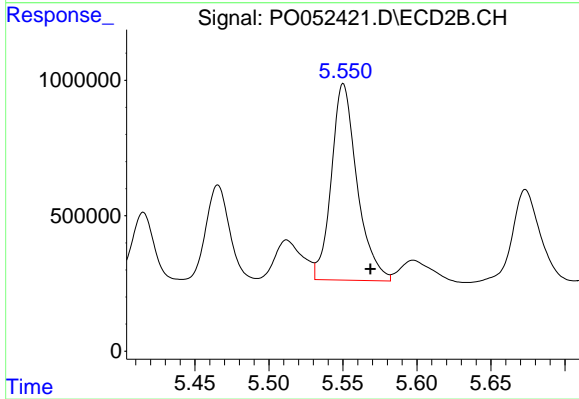
#27 AR-1254-2

R.T.: 5.172 min  
 Delta R.T.: -0.017 min  
 Response: 5152462  
 Conc: 409.62 ng/ml



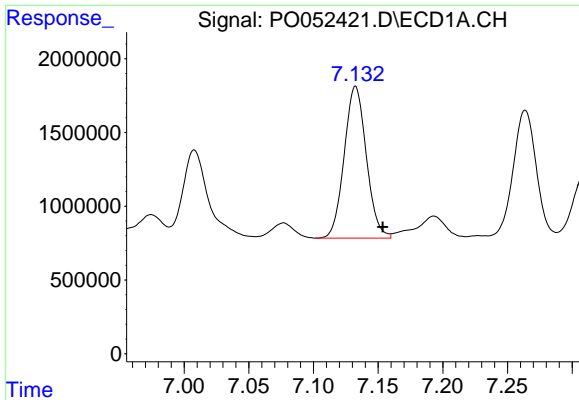
#28 AR-1254-3

R.T.: 6.849 min  
 Delta R.T.: -0.021 min  
 Response: 18062797  
 Conc: 430.36 ng/ml



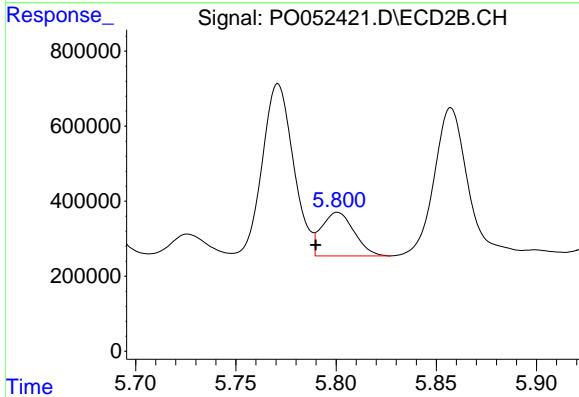
#28 AR-1254-3

R.T.: 5.550 min  
 Delta R.T.: -0.018 min  
 Response: 8770214  
 Conc: 447.29 ng/ml

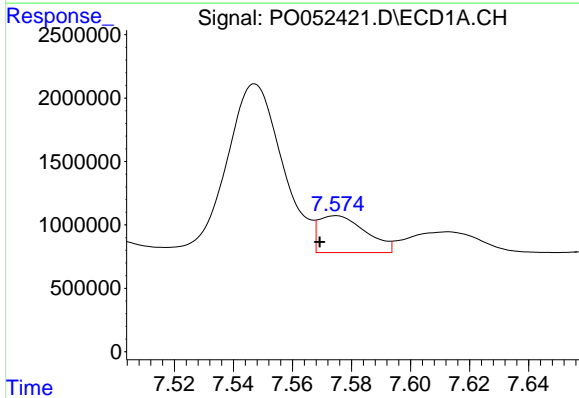


#29 AR-1254-4  
 R.T.: 7.133 min  
 Delta R.T.: -0.021 min  
 Response: 12263333  
 Conc: 428.26 ng/ml

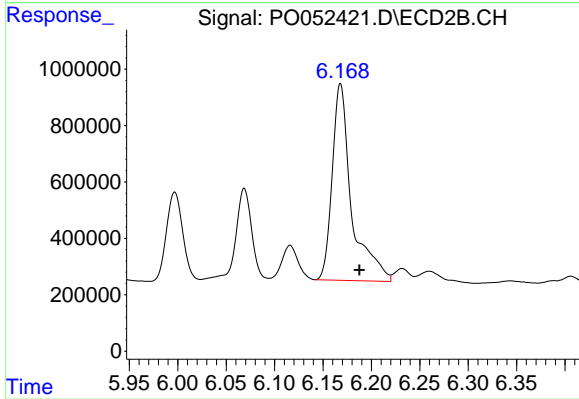
Instrument :  
 ECD\_O  
 ClientSampled :



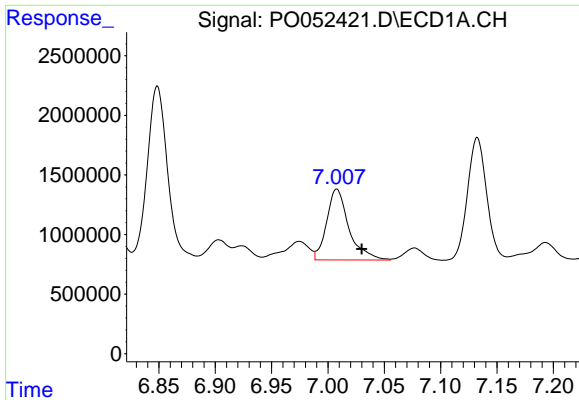
#29 AR-1254-4  
 R.T.: 5.801 min  
 Delta R.T.: 0.011 min  
 Response: 1314047  
 Conc: 116.07 ng/ml



#30 AR-1254-5  
 R.T.: 7.575 min  
 Delta R.T.: 0.006 min  
 Response: 3218576  
 Conc: 109.30 ng/ml



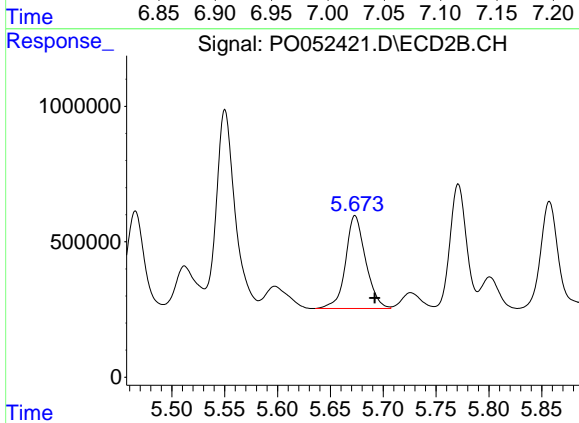
#30 AR-1254-5  
 R.T.: 6.168 min  
 Delta R.T.: -0.019 min  
 Response: 9698225  
 Conc: 575.44 ng/ml



#31 AR-1260-1

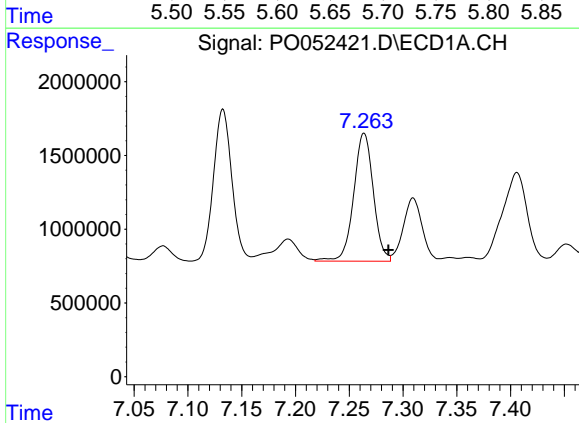
R.T.: 7.008 min  
 Delta R.T.: -0.022 min  
 Response: 8165149  
 Conc: 276.63 ng/ml

Instrument :  
 ECD\_O  
 ClientSampled :



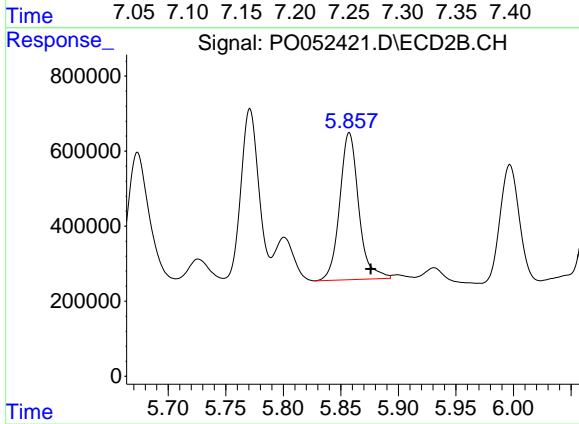
#31 AR-1260-1

R.T.: 5.673 min  
 Delta R.T.: -0.019 min  
 Response: 4528286  
 Conc: 323.87 ng/ml



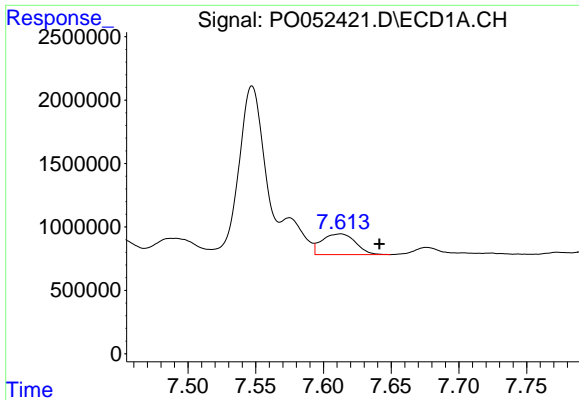
#32 AR-1260-2

R.T.: 7.264 min  
 Delta R.T.: -0.023 min  
 Response: 11043472  
 Conc: 313.49 ng/ml



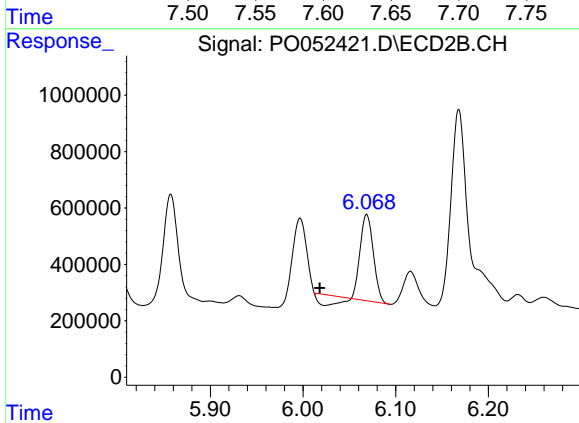
#32 AR-1260-2

R.T.: 5.857 min  
 Delta R.T.: -0.019 min  
 Response: 4515847  
 Conc: 270.48 ng/ml

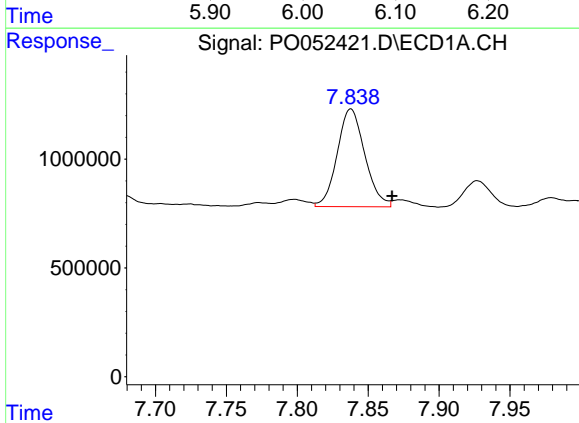


#33 AR-1260-3  
 R.T.: 7.613 min  
 Delta R.T.: -0.029 min  
 Response: 2820069  
 Conc: 116.59 ng/ml

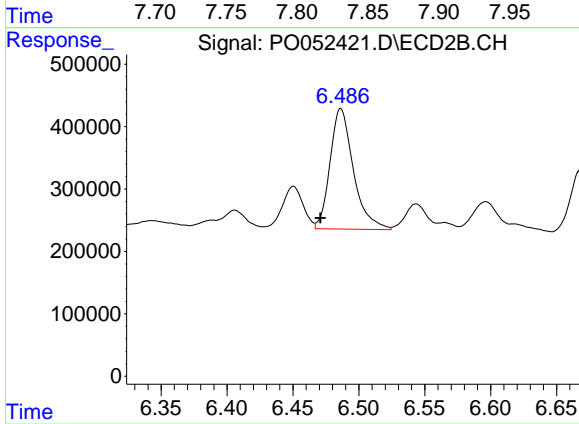
Instrument :  
 ECD\_O  
 ClientSampled :



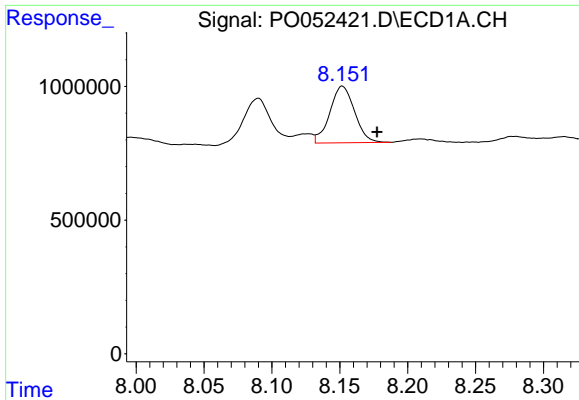
#33 AR-1260-3  
 R.T.: 6.069 min  
 Delta R.T.: 0.051 min  
 Response: 2580746  
 Conc: 162.96 ng/ml



#34 AR-1260-4  
 R.T.: 7.838 min  
 Delta R.T.: -0.029 min  
 Response: 6076527  
 Conc: 248.34 ng/ml



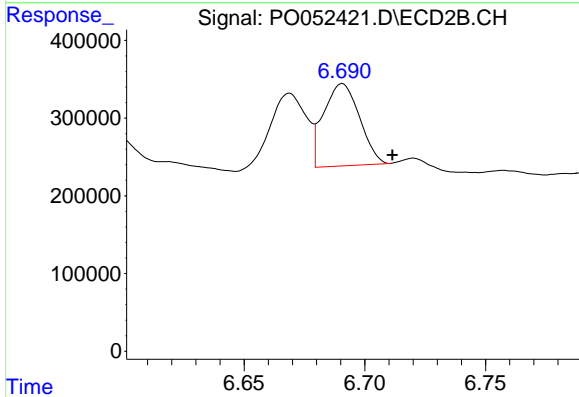
#34 AR-1260-4  
 R.T.: 6.486 min  
 Delta R.T.: 0.015 min  
 Response: 2384333  
 Conc: 228.44 ng/ml



#35 AR-1260-5

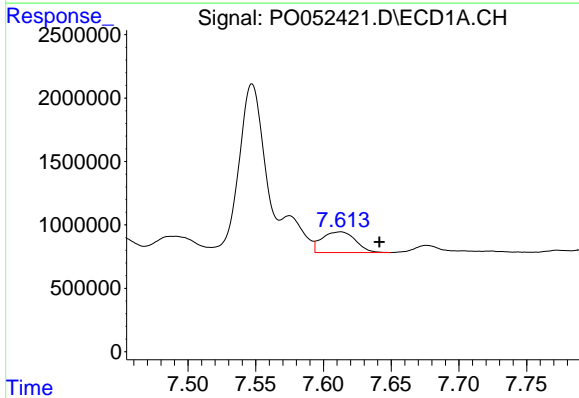
R.T.: 8.152 min  
 Delta R.T.: -0.026 min  
 Response: 2693973  
 Conc: 54.83 ng/ml

Instrument :  
 ECD\_O  
 ClientSampled :



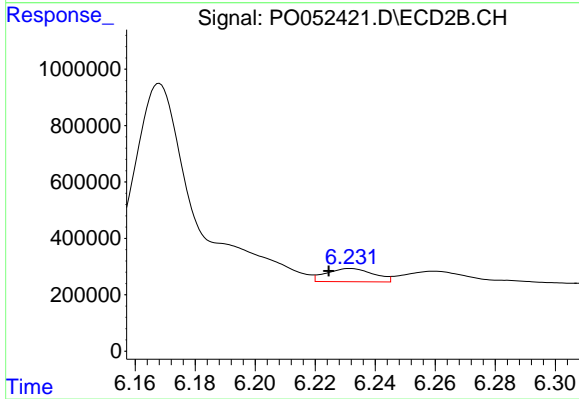
#35 AR-1260-5

R.T.: 6.691 min  
 Delta R.T.: -0.021 min  
 Response: 1100690  
 Conc: 45.52 ng/ml



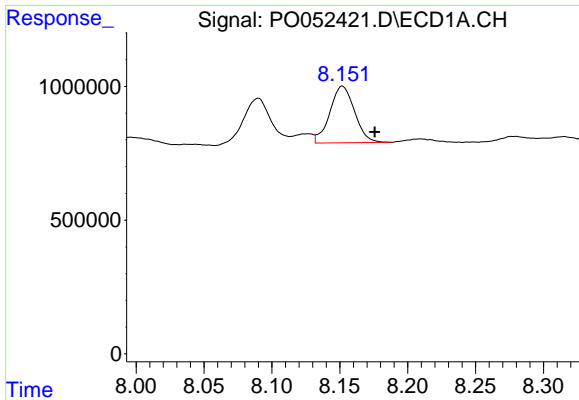
#36 AR-1262-1

R.T.: 7.613 min  
 Delta R.T.: -0.029 min  
 Response: 2820069  
 Conc: 69.26 ng/ml



#36 AR-1262-1

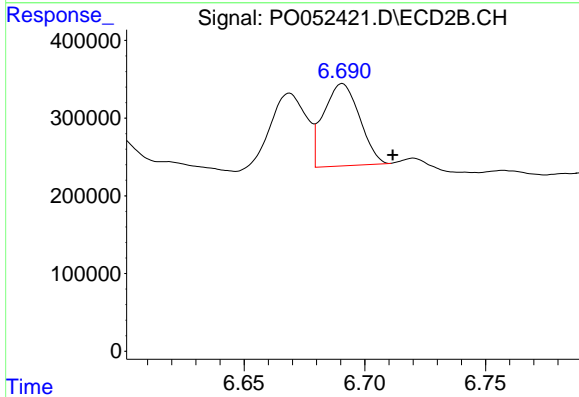
R.T.: 6.232 min  
 Delta R.T.: 0.007 min  
 Response: 506294  
 Conc: 27.66 ng/ml



#37 AR-1262-2

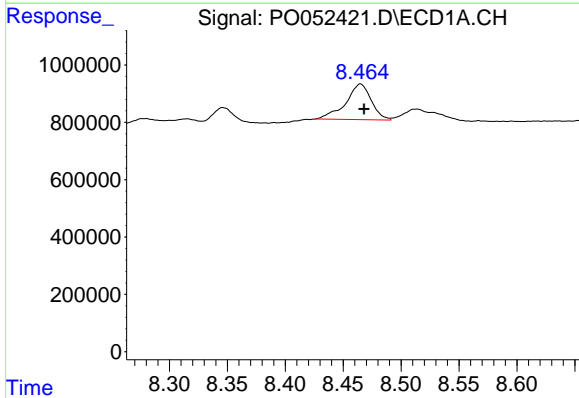
R.T.: 8.152 min  
 Delta R.T.: -0.024 min  
 Response: 2693973  
 Conc: 41.53 ng/ml

Instrument :  
 ECD\_O  
 ClientSampleId :



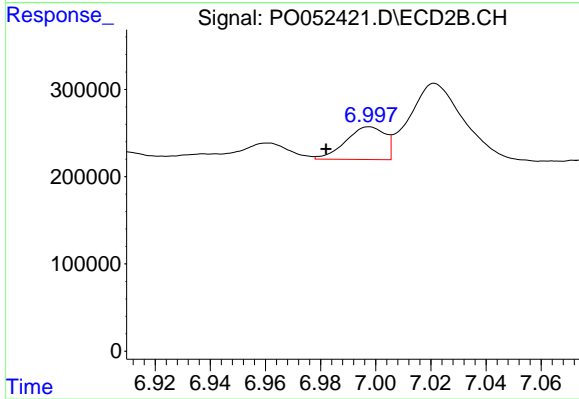
#37 AR-1262-2

R.T.: 6.691 min  
 Delta R.T.: -0.021 min  
 Response: 1100690  
 Conc: 38.06 ng/ml



#38 AR-1262-3

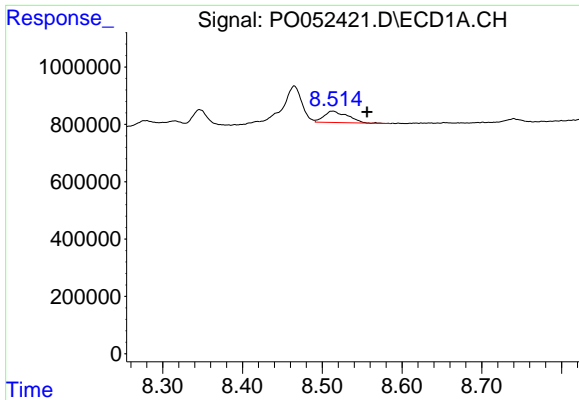
R.T.: 8.465 min  
 Delta R.T.: -0.003 min  
 Response: 1908128  
 Conc: 46.06 ng/ml



#38 AR-1262-3

R.T.: 6.998 min  
 Delta R.T.: 0.016 min  
 Response: 370759  
 Conc: 31.52 ng/ml

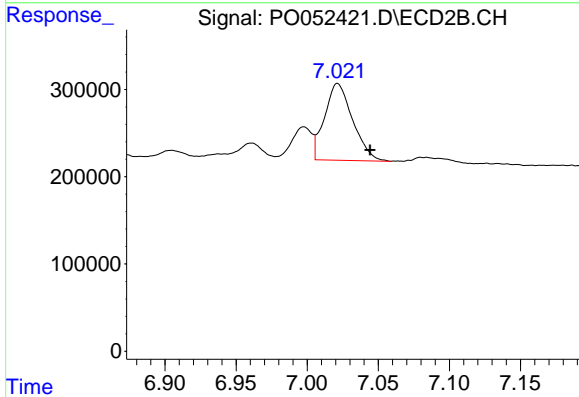




#39 AR-1262-4

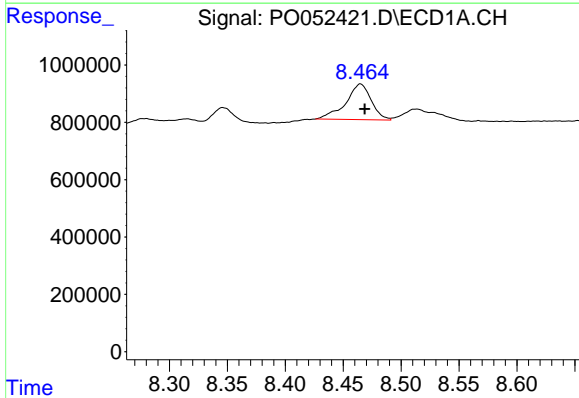
R.T.: 8.513 min  
 Delta R.T.: -0.043 min  
 Response: 806210  
 Conc: 24.27 ng/ml

Instrument :  
 ECD\_O  
 ClientSampleId :



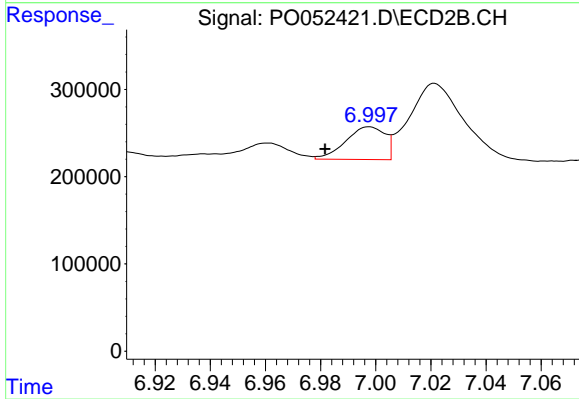
#39 AR-1262-4

R.T.: 7.021 min  
 Delta R.T.: -0.023 min  
 Response: 1210976  
 Conc: 57.86 ng/ml



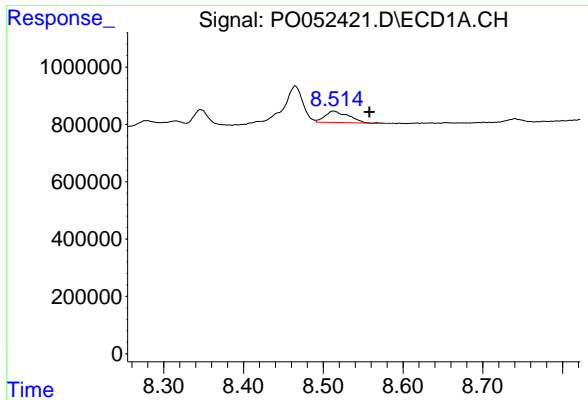
#41 AR-1268-1

R.T.: 8.465 min  
 Delta R.T.: -0.004 min  
 Response: 1908128  
 Conc: 20.46 ng/ml



#41 AR-1268-1

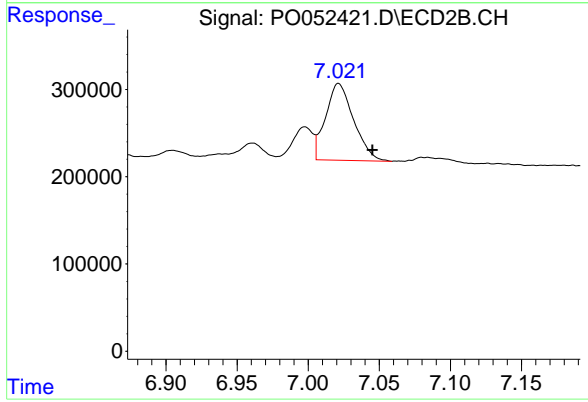
R.T.: 6.998 min  
 Delta R.T.: 0.016 min  
 Response: 370759  
 Conc: 9.38 ng/ml



#42 AR-1268-2

R.T.: 8.513 min  
Delta R.T.: -0.045 min  
Response: 806210  
Conc: 9.77 ng/ml

Instrument :  
ECD\_O  
ClientSampleId :



#42 AR-1268-2

R.T.: 7.021 min  
Delta R.T.: -0.024 min  
Response: 1210976  
Conc: 32.30 ng/ml