

Data Path : Z:\pestpcbsrv\HPCHEM1\ECD_0\Data\PO121218\
 Data File : PO052449.D
 Signal(s) : Signal #1: ECD1A.CH Signal #2: ECD2B.CH
 Acq On : 12 Dec 2018 15:35
 Operator : SM/SJ
 Sample : I.BLK
 Misc :
 ALS Vial : 2 Sample Multiplier: 1

Instrument :
 ECD_0
 ClientSampleId :

Integration File signal 1: autoint1.e
 Integration File signal 2: autoint2.e
 Quant Time: Dec 13 00:41:44 2018
 Quant Method : Z:\pestpcbsrv\HPCHEM1\ECD_0\methods\PO120318.M
 Quant Title : GC EXTRACTABLES
 QLast Update : Tue Dec 04 03:10:39 2018
 Response via : Initial Calibration
 Integrator: ChemStation 6890 Scale Mode: Small noise peaks clipped

Volume Inj. : 2 µl
 Signal #1 Phase : ZB-MR1 Signal #2 Phase: ZB-MR2
 Signal #1 Info : 30Mx0.32mmx 0.50µ Signal #2 Info : 30M x 0.32mm x 0.25µm

Compound	RT#1	RT#2	Resp#1	Resp#2	ng/ml	ng/ml

System Monitoring Compounds						
1) SA Tetrachlo...	4.269	3.284	15058898	4981439	17.492	22.335 #
2) SA Decachlor...	9.835	7.976	8691357	3569093	17.367	17.120
Target Compounds						
7) L1 AR-1016-5	0.000	4.714	0	159822	N.D.	23.121 #
15) L3 AR-1232-5	0.000	4.721	0	18915	N.D.	7.546 #
24) L5 AR-1248-4	6.275	4.721	399513	18915	17.401	2.292 #
26) L6 AR-1254-1	6.275	0.000	399513	0	15.462	N.D. #

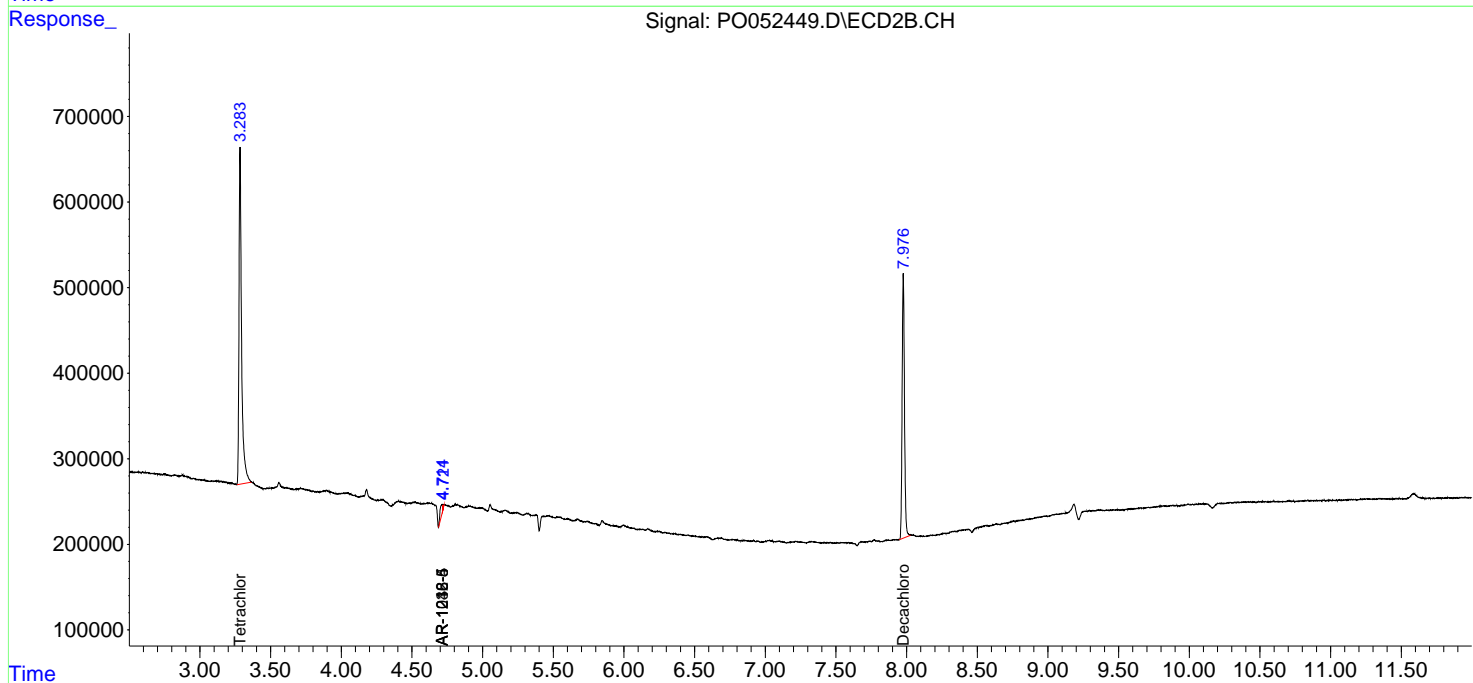
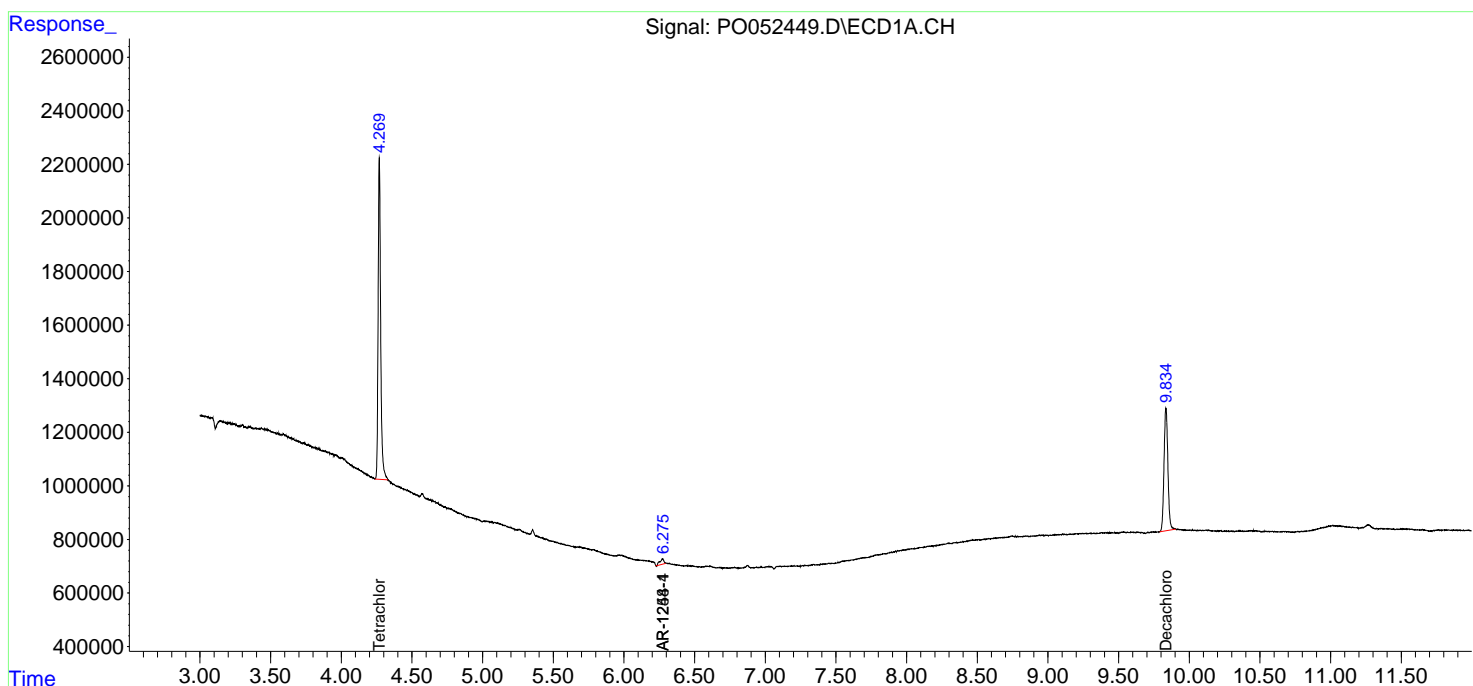
(f)=RT Delta > 1/2 Window (#)=Amounts differ by > 25% (m)=manual int.

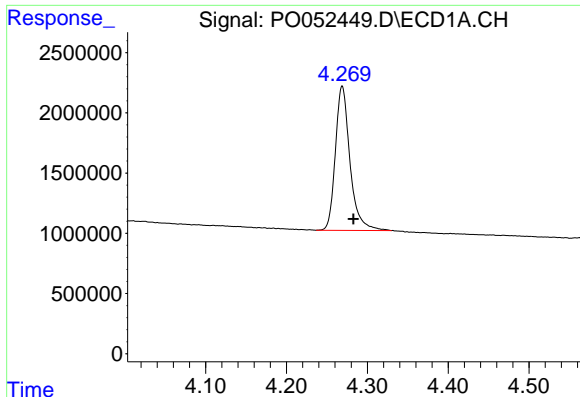
Data Path : Z:\pestpcbsrv\HPCHEM1\ECD_0\Data\PO121218\
 Data File : PO052449.D
 Signal(s) : Signal #1: ECD1A.CH Signal #2: ECD2B.CH
 Acq On : 12 Dec 2018 15:35
 Operator : SM/SJ
 Sample : I.BLK
 Misc :
 ALS Vial : 2 Sample Multiplier: 1

Instrument :
 ECD_O
 ClientSampled :

Integration File signal 1: autoint1.e
 Integration File signal 2: autoint2.e
 Quant Time: Dec 13 00:41:44 2018
 Quant Method : Z:\pestpcbsrv\HPCHEM1\ECD_0\methods\PO120318.M
 Quant Title : GC EXTRACTABLES
 QLast Update : Tue Dec 04 03:10:39 2018
 Response via : Initial Calibration
 Integrator: ChemStation 6890 Scale Mode: Small noise peaks clipped

Volume Inj. : 2 µl
 Signal #1 Phase : ZB-MR1 Signal #2 Phase: ZB-MR2
 Signal #1 Info : 30Mx0.32mmx 0.50µ Signal #2 Info : 30M x 0.32mm x 0.25µm

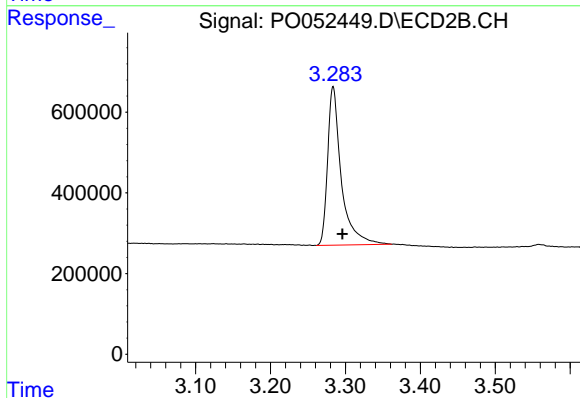




#1 Tetrachloro-m-xylene

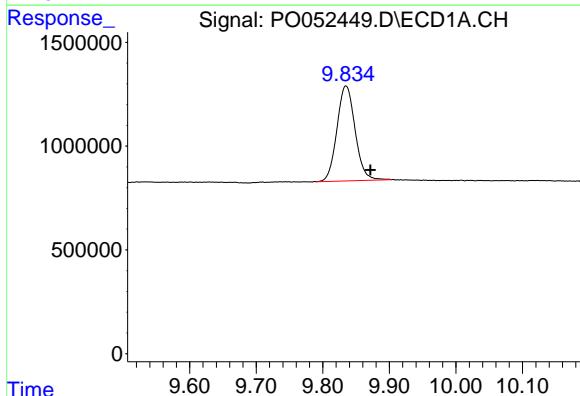
R.T.: 4.269 min
 Delta R.T.: -0.014 min
 Response: 15058898
 Conc: 17.49 ng/ml

Instrument :
 ECD_O
 ClientSampleId :



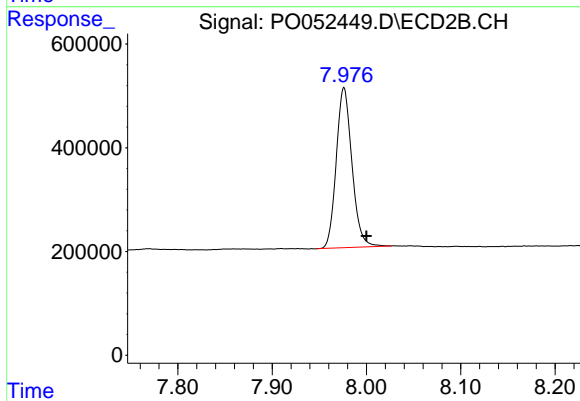
#1 Tetrachloro-m-xylene

R.T.: 3.284 min
 Delta R.T.: -0.012 min
 Response: 4981439
 Conc: 22.34 ng/ml



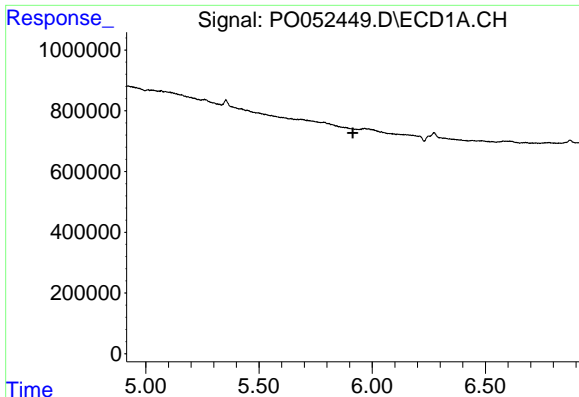
#2 Decachlorobiphenyl

R.T.: 9.835 min
 Delta R.T.: -0.037 min
 Response: 8691357
 Conc: 17.37 ng/ml



#2 Decachlorobiphenyl

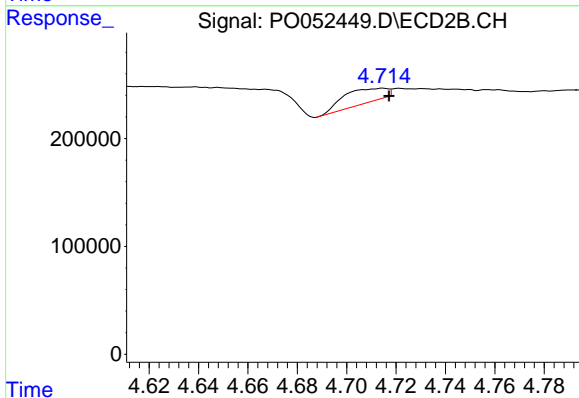
R.T.: 7.976 min
 Delta R.T.: -0.024 min
 Response: 3569093
 Conc: 17.12 ng/ml



#7 AR-1016-5

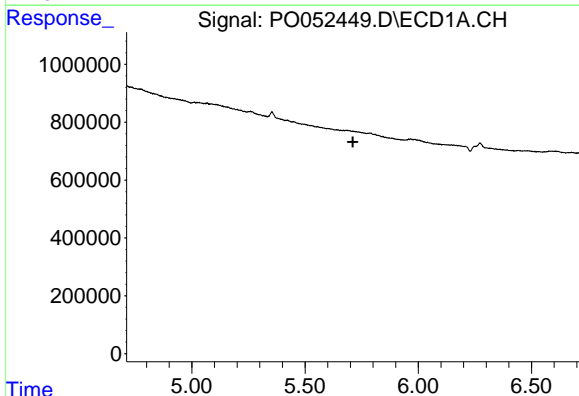
R.T.: 0.000 min
 Exp R.T. : 5.914 min
 Response: 0
 Conc: N.D.

Instrument :
 ECD_O
 ClientSampled :



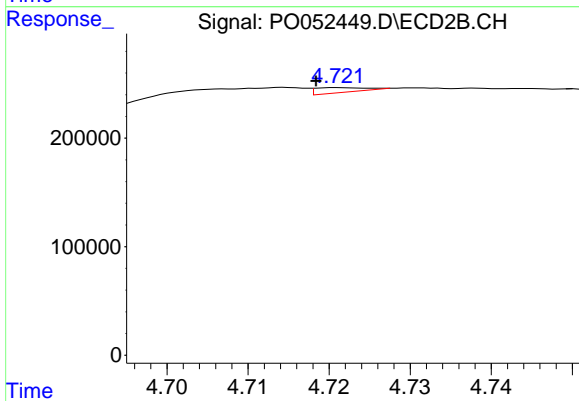
#7 AR-1016-5

R.T.: 4.714 min
 Delta R.T.: -0.003 min
 Response: 159822
 Conc: 23.12 ng/ml



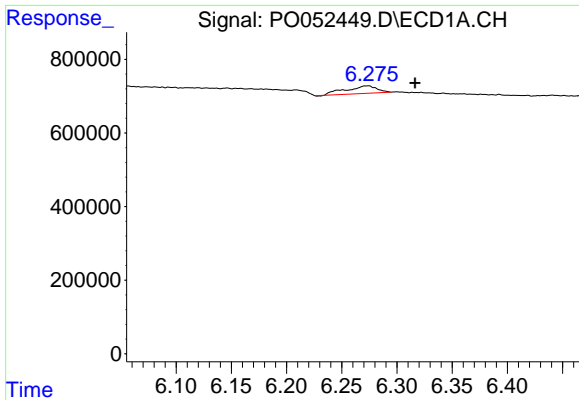
#15 AR-1232-5

R.T.: 0.000 min
 Exp R.T. : 5.711 min
 Response: 0
 Conc: N.D.



#15 AR-1232-5

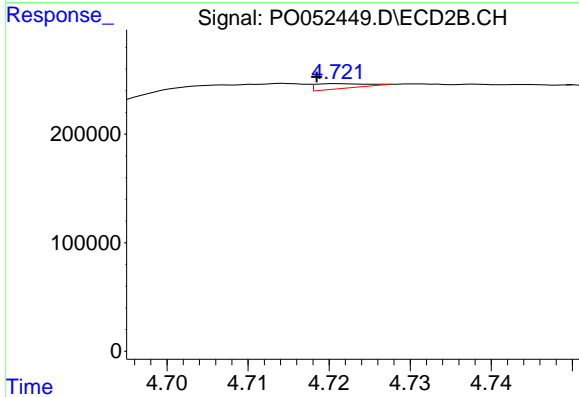
R.T.: 4.721 min
 Delta R.T.: 0.003 min
 Response: 18915
 Conc: 7.55 ng/ml



#24 AR-1248-4

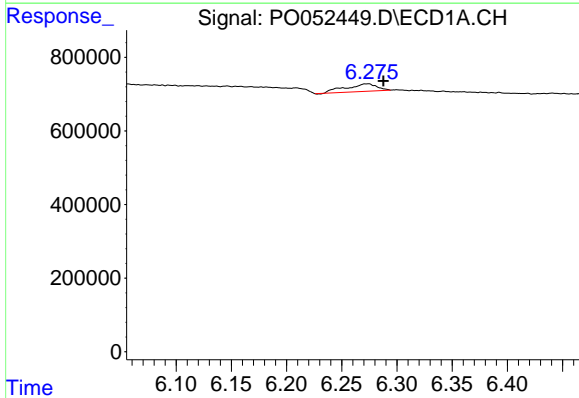
R.T.: 6.275 min
 Delta R.T.: -0.042 min
 Response: 399513
 Conc: 17.40 ng/ml

Instrument :
 ECD_O
 ClientSampleId :



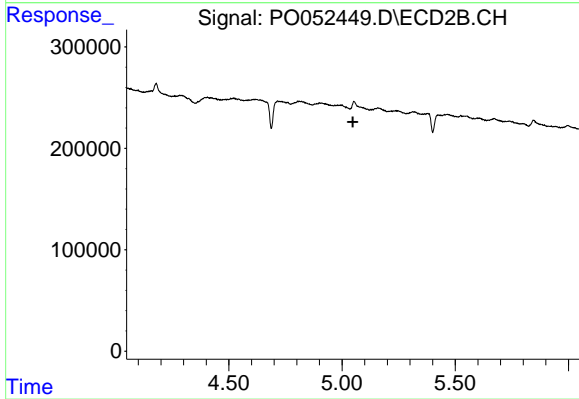
#24 AR-1248-4

R.T.: 4.721 min
 Delta R.T.: 0.003 min
 Response: 18915
 Conc: 2.29 ng/ml



#26 AR-1254-1

R.T.: 6.275 min
 Delta R.T.: -0.013 min
 Response: 399513
 Conc: 15.46 ng/ml



#26 AR-1254-1

R.T.: 0.000 min
 Exp R.T. : 5.048 min
 Response: 0
 Conc: N.D.