

Data Path : Z:\pestpcbsrv\HPCHEM1\ECD\_0\Data\PO121218\  
 Data File : PO052443.D  
 Signal(s) : Signal #1: ECD1A.CH Signal #2: ECD2B.CH  
 Acq On : 12 Dec 2018 12:21  
 Operator : SM/SJ  
 Sample : J6193-07  
 Misc :  
 ALS Vial : 9 Sample Multiplier: 1

Instrument :  
 ECD\_0  
 ClientSampleId :  
 CL-01-121018-D

Manual Integrations  
 APPROVED

Sohil  
 12/14/2018 9:31:57 AM

Integration File signal 1: autoint1.e  
 Integration File signal 2: autoint2.e  
 Quant Time: Dec 13 00:35:33 2018  
 Quant Method : Z:\pestpcbsrv\HPCHEM1\ECD\_0\methods\PO120318.M  
 Quant Title : GC EXTRACTABLES  
 QLast Update : Tue Dec 04 03:10:39 2018  
 Response via : Initial Calibration  
 Integrator: ChemStation 6890 Scale Mode: Small noise peaks clipped

Volume Inj. : 2 µl  
 Signal #1 Phase : ZB-MR1 Signal #2 Phase: ZB-MR2  
 Signal #1 Info : 30Mx0.32mmx 0.50µ Signal #2 Info : 30M x 0.32mm x 0.25µm

Compound	RT#1	RT#2	Resp#1	Resp#2	ng/ml	ng/ml
-----						
System Monitoring Compounds						
1) SA Tetrachlo...	4.266	3.286	14442643	3536696	16.776	15.857
2) SA Decachlor...	9.831	7.977	8146112	2861640	16.278	13.727
Target Compounds						
26) L6 AR-1254-1	6.269	5.032	2264713	716377	87.648m	51.332 #
27) L6 AR-1254-2	6.484	5.171	1967284	499097	49.312	39.678
28) L6 AR-1254-3	6.849	5.550	2355984	929775	56.133	47.419
29) L6 AR-1254-4	7.130	5.771	1300078	212826	45.401m	18.798 #
30) L6 AR-1254-5	7.546	6.167	1497007	773291	50.839m	45.883m
-----						

(f)=RT Delta > 1/2 Window (#)=Amounts differ by > 25% (m)=manual int.

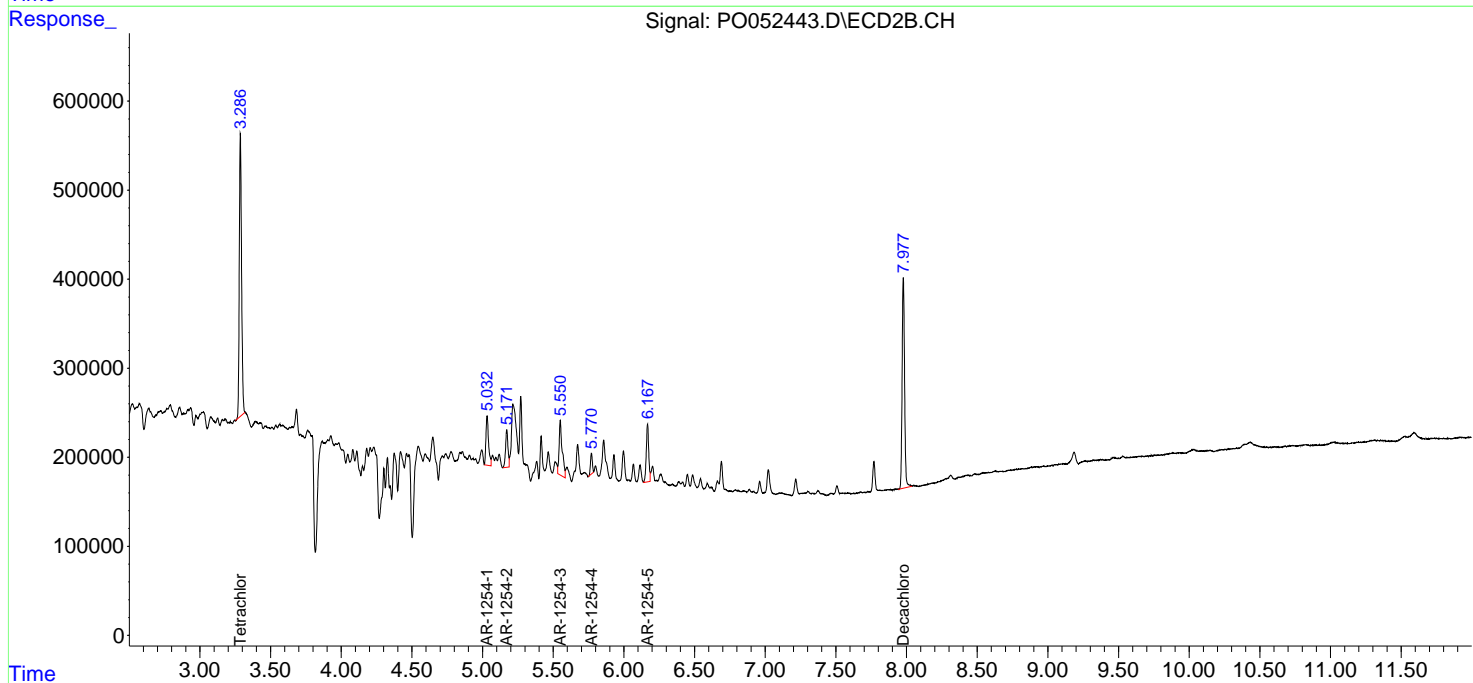
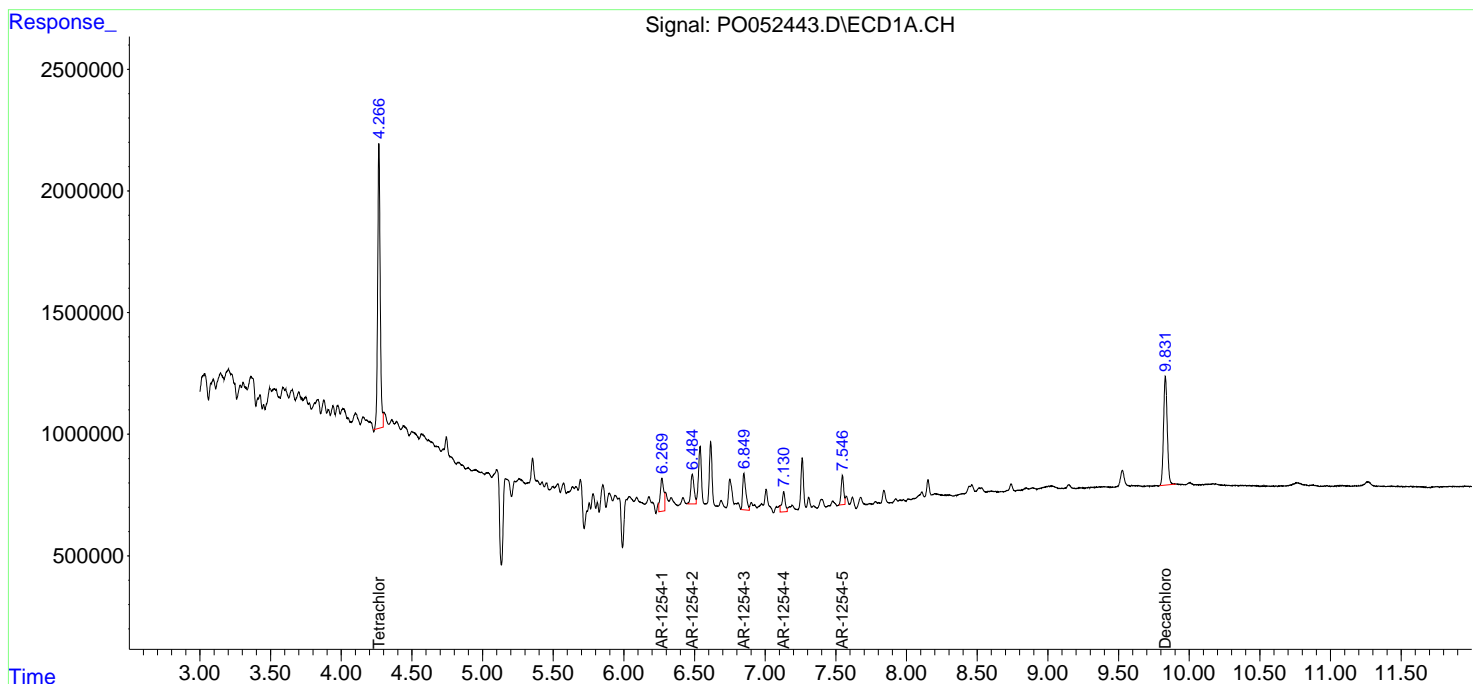
Data Path : Z:\pestpcbsrv\HPCHEM1\ECD\_O\Data\PO121218\  
 Data File : PO052443.D  
 Signal(s) : Signal #1: ECD1A.CH Signal #2: ECD2B.CH  
 Acq On : 12 Dec 2018 12:21  
 Operator : SM/SJ  
 Sample : J6193-07  
 Misc :  
 ALS Vial : 9 Sample Multiplier: 1

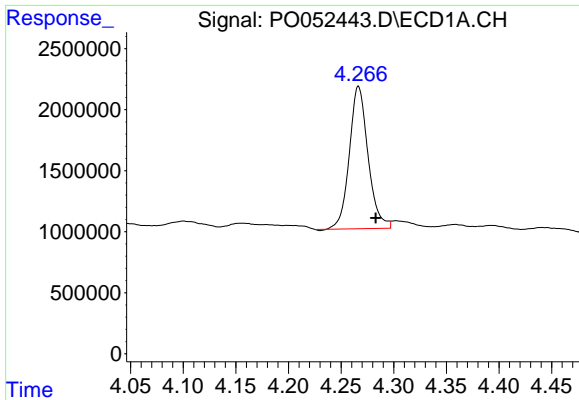
Instrument :  
 ECD\_O  
 Client Sampled :  
 CL-01-121018-D

Manual Integrations  
**APPROVED**  
 Sohil  
 12/14/2018 9:31:57 AM

Integration File signal 1: autoint1.e  
 Integration File signal 2: autoint2.e  
 Quant Time: Dec 13 00:35:33 2018  
 Quant Method : Z:\pestpcbsrv\HPCHEM1\ECD\_O\methods\PO120318.M  
 Quant Title : GC EXTRACTABLES  
 QLast Update : Tue Dec 04 03:10:39 2018  
 Response via : Initial Calibration  
 Integrator: ChemStation 6890 Scale Mode: Small noise peaks clipped

Volume Inj. : 2 µl  
 Signal #1 Phase : ZB-MR1 Signal #2 Phase: ZB-MR2  
 Signal #1 Info : 30Mx0.32mmx 0.50µ Signal #2 Info : 30M x 0.32mm x 0.25µm

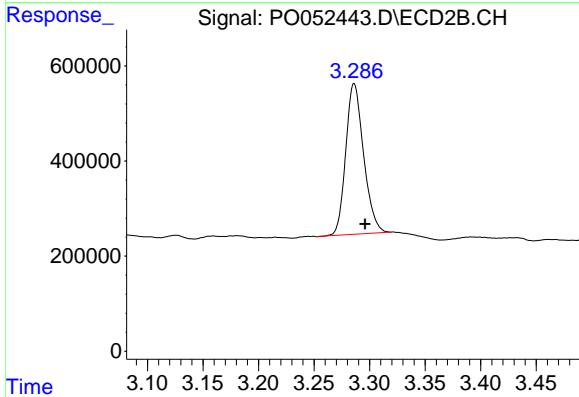




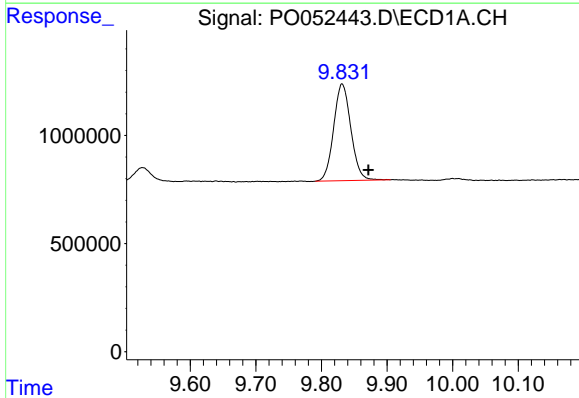
#1 Tetrachloro-m-xylene  
 R.T.: 4.266 min  
 Delta R.T.: -0.017 min  
 Response: 14442643  
 Conc: 16.78 ng/ml

Instrument :  
 ECD\_O  
 ClientSampled :  
 CL-01-121018-D

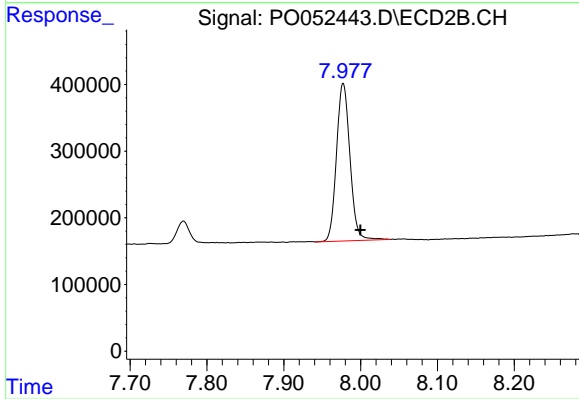
Manual Integrations  
 APPROVED  
 Sohil  
 12/14/2018 9:31:57 AM



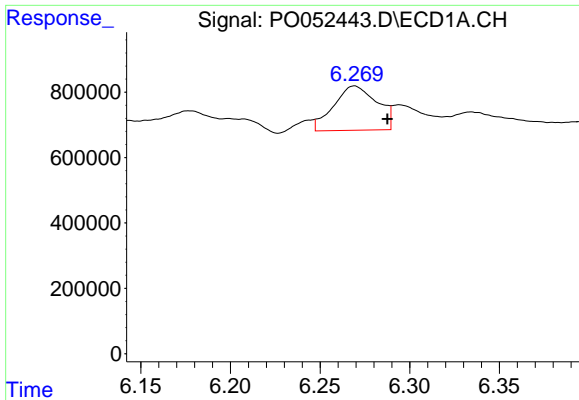
#1 Tetrachloro-m-xylene  
 R.T.: 3.286 min  
 Delta R.T.: -0.010 min  
 Response: 3536696  
 Conc: 15.86 ng/ml



#2 Decachlorobiphenyl  
 R.T.: 9.831 min  
 Delta R.T.: -0.040 min  
 Response: 8146112  
 Conc: 16.28 ng/ml



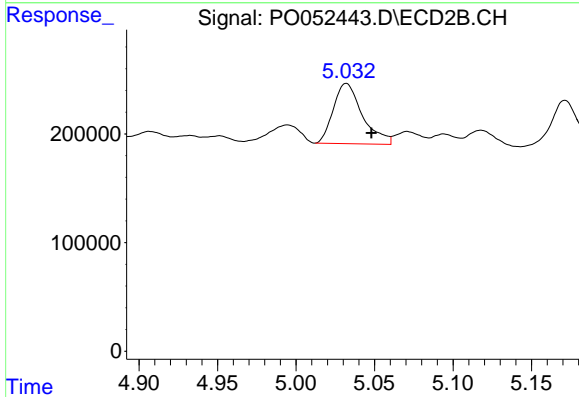
#2 Decachlorobiphenyl  
 R.T.: 7.977 min  
 Delta R.T.: -0.023 min  
 Response: 2861640  
 Conc: 13.73 ng/ml



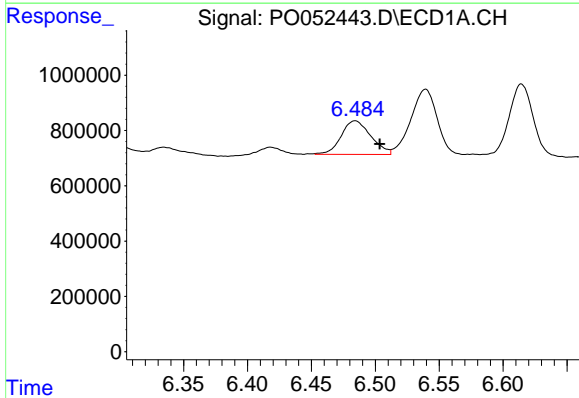
#26 AR-1254-1  
 R.T.: 6.269 min  
 Delta R.T.: -0.019 min  
 Response: 2264713  
 Conc: 87.65 ng/ml m

**Instrument :**  
 ECD\_O  
**ClientSampled :**  
 CL-01-121018-D

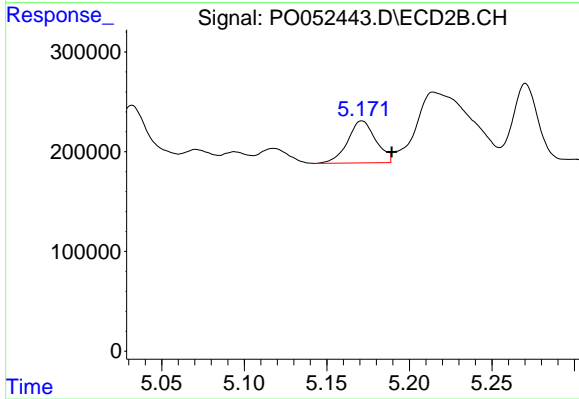
**Manual Integrations**  
**APPROVED**  
 Sohil  
 12/14/2018 9:31:57 AM



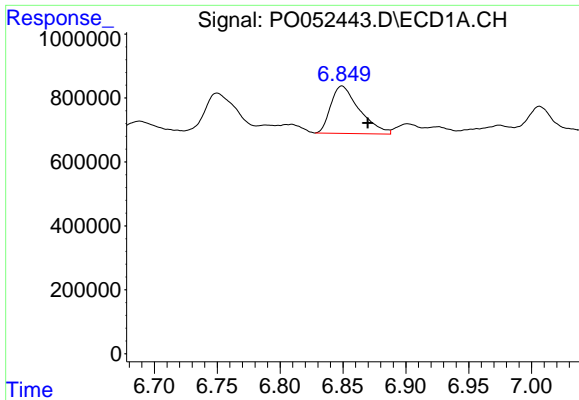
#26 AR-1254-1  
 R.T.: 5.032 min  
 Delta R.T.: -0.016 min  
 Response: 716377  
 Conc: 51.33 ng/ml



#27 AR-1254-2  
 R.T.: 6.484 min  
 Delta R.T.: -0.019 min  
 Response: 1967284  
 Conc: 49.31 ng/ml



#27 AR-1254-2  
 R.T.: 5.171 min  
 Delta R.T.: -0.018 min  
 Response: 499097  
 Conc: 39.68 ng/ml

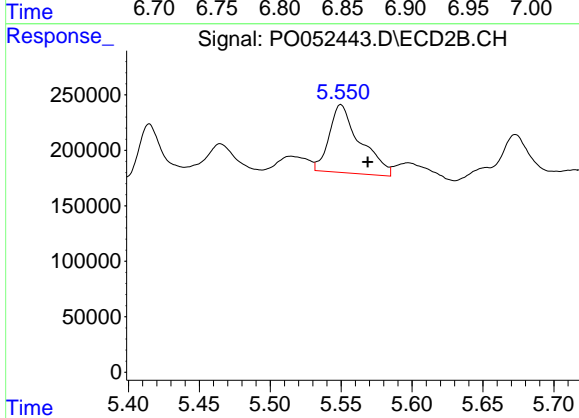


#28 AR-1254-3

R.T.: 6.849 min  
 Delta R.T.: -0.020 min  
 Response: 2355984  
 Conc: 56.13 ng/ml

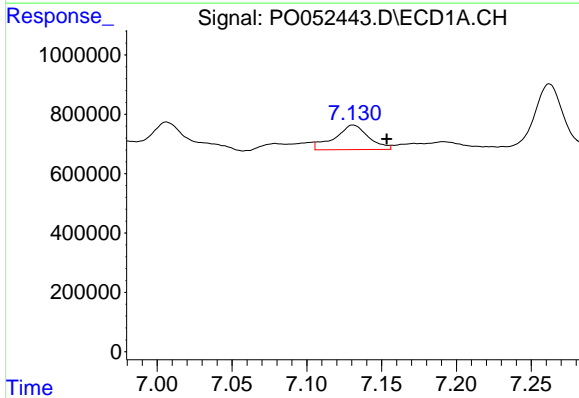
Instrument :  
 ECD\_O  
 ClientSampled :  
 CL-01-121018-D

Manual Integrations  
 APPROVED  
 Sohil  
 12/14/2018 9:31:57 AM



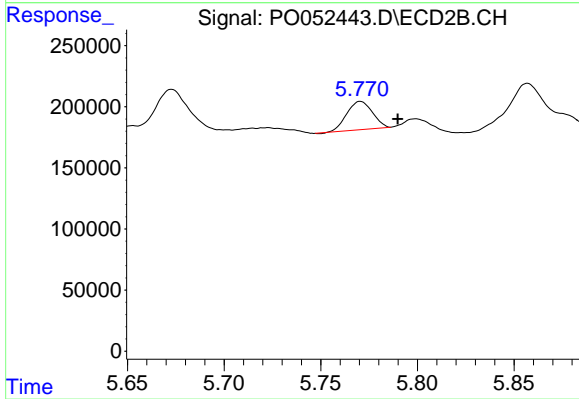
#28 AR-1254-3

R.T.: 5.550 min  
 Delta R.T.: -0.019 min  
 Response: 929775  
 Conc: 47.42 ng/ml



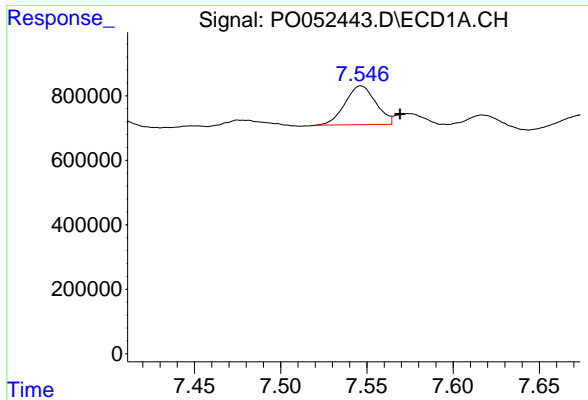
#29 AR-1254-4

R.T.: 7.130 min  
 Delta R.T.: -0.023 min  
 Response: 1300078  
 Conc: 45.40 ng/ml m



#29 AR-1254-4

R.T.: 5.771 min  
 Delta R.T.: -0.019 min  
 Response: 212826  
 Conc: 18.80 ng/ml



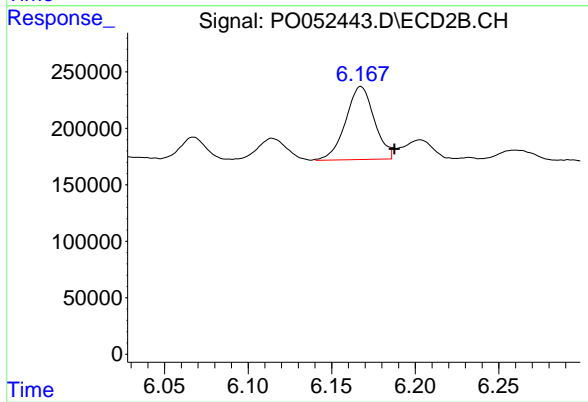
#30 AR-1254-5

R.T.: 7.546 min  
Delta R.T.: -0.023 min  
Response: 1497007  
Conc: 50.84 ng/ml m

Instrument :  
ECD\_O  
ClientSampled :  
CL-01-121018-D

Manual Integrations  
APPROVED

Sohil  
12/14/2018 9:31:57 AM



#30 AR-1254-5

R.T.: 6.167 min  
Delta R.T.: -0.020 min  
Response: 773291  
Conc: 45.88 ng/ml m