

Data Path : Z:\pestpcbsrv\HPCHEM1\ECD_0\Data\PO121419\
 Data File : P0064617.D
 Signal(s) : Signal #1: ECD1A.CH Signal #2: ECD2B.CH
 Acq On : 13 Dec 2019 17:51
 Operator : SM/AJ
 Sample : K6258-01
 Misc :
 ALS Vial : 7 Sample Multiplier: 1

Instrument :
 ECD_0
 ClientSampleId :
 MH-NEAR-THE-CURB-(3A)

Integration File signal 1: autoint1.e
 Integration File signal 2: autoint2.e
 Quant Time: Dec 15 08:00:29 2019
 Quant Method : Z:\pestpcbsrv\HPCHEM1\ECD_0\methods\PO121319.M
 Quant Title : GC EXTRACTABLES
 QLast Update : Fri Dec 13 08:19:24 2019
 Response via : Initial Calibration
 Integrator: ChemStation 6890 Scale Mode: Small noise peaks clipped

Volume Inj. : 2 µl
 Signal #1 Phase : ZB-MR1 Signal #2 Phase: ZB-MR2
 Signal #1 Info : 30Mx0.32mmx 0.50µ Signal #2 Info : 30M x 0.32mm x 0.25µm

Compound	RT#1	RT#2	Resp#1	Resp#2	ng/ml	ng/ml
----------	------	------	--------	--------	-------	-------

 System Monitoring Compounds

1) SA Tetrachlo...	4.183	3.459	691048	691526	28.385	27.280
2) SA Decachlor...	9.697	8.383	453104	516405	14.764	14.870

Target Compounds

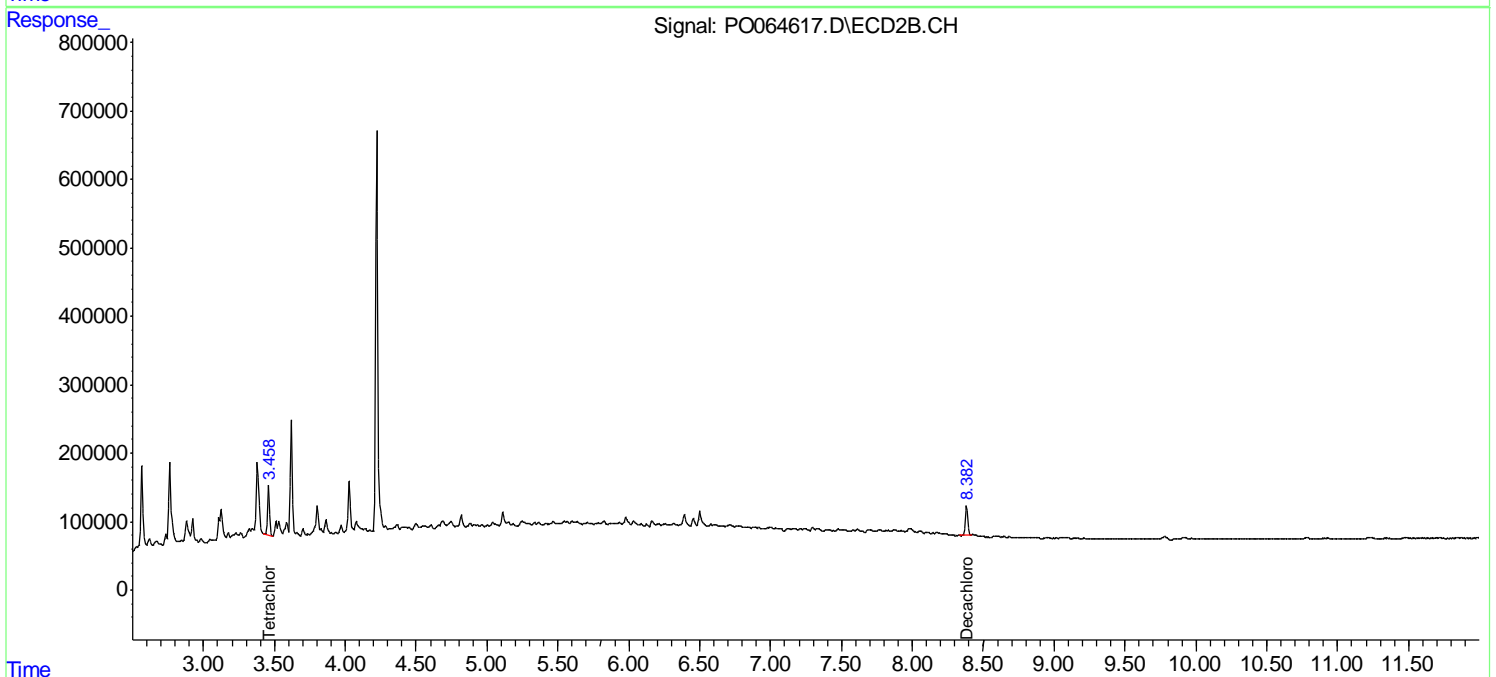
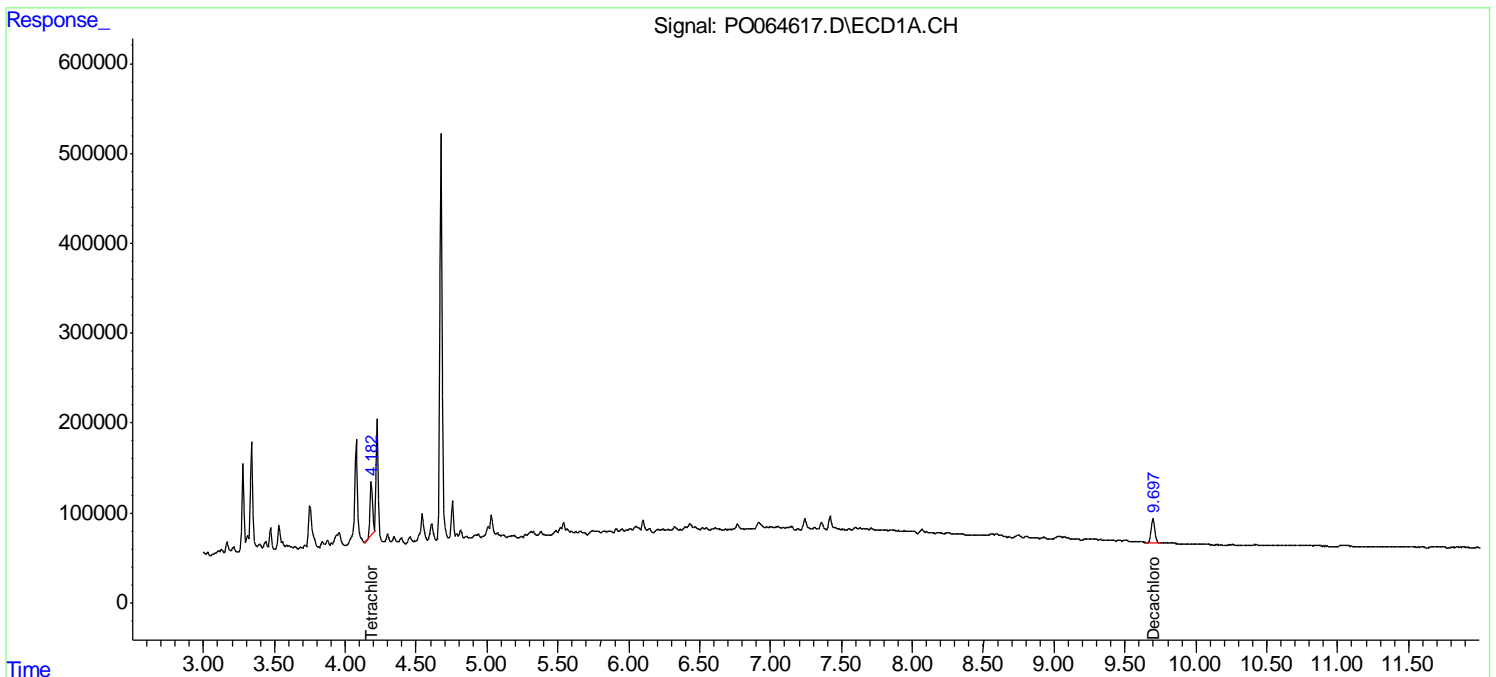
(f)=RT Delta > 1/2 Window (#)=Amounts differ by > 25% (m)=manual int.

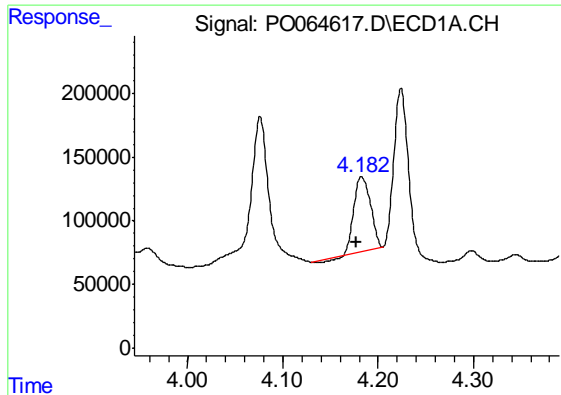
Data Path : Z:\pestpcbsrv\HPCHEM1\ECD_O\Data\PO121419\
 Data File : PO064617.D
 Signal(s) : Signal #1: ECD1A.CH Signal #2: ECD2B.CH
 Acq On : 13 Dec 2019 17:51
 Operator : SM/AJ
 Sample : K6258-01
 Misc :
 ALS Vial : 7 Sample Multiplier: 1

Instrument :
 ECD_O
 ClientSampleId :
 MH-NEAR-THE-CURB-(3A)

Integration File signal 1: autoint1.e
 Integration File signal 2: autoint2.e
 Quant Time: Dec 15 08:00:29 2019
 Quant Method : Z:\pestpcbsrv\HPCHEM1\ECD_O\methods\PO121319.M
 Quant Title : GC EXTRACTABLES
 QLast Update : Fri Dec 13 08:19:24 2019
 Response via : Initial Calibration
 Integrator: ChemStation 6890 Scale Mode: Small noise peaks clipped

Volume Inj. : 2 µl
 Signal #1 Phase : ZB-MR1 Signal #2 Phase: ZB-MR2
 Signal #1 Info : 30Mx0.32mmx 0.50µ Signal #2 Info : 30M x 0.32mm x 0.25µm

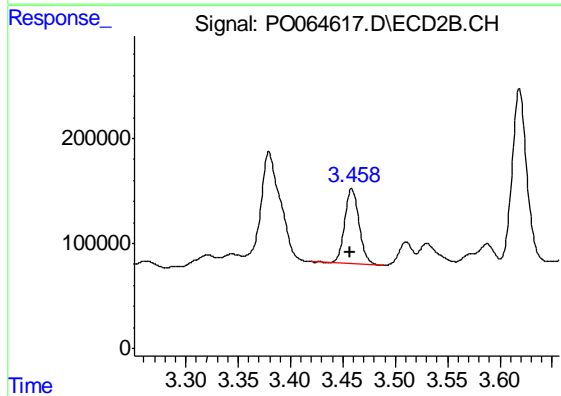




#1 Tetrachloro-m-xylene

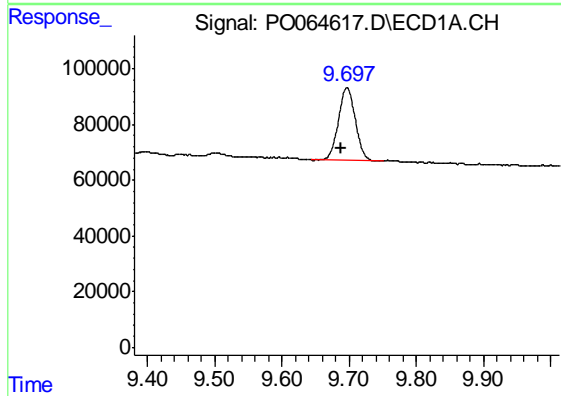
R.T.: 4.183 min
Delta R.T.: 0.006 min
Response: 691048
Conc: 28.39 ng/ml

Instrument :
ECD_O
ClientSampleId :
MH-NEAR-THE-CURB-(3A)



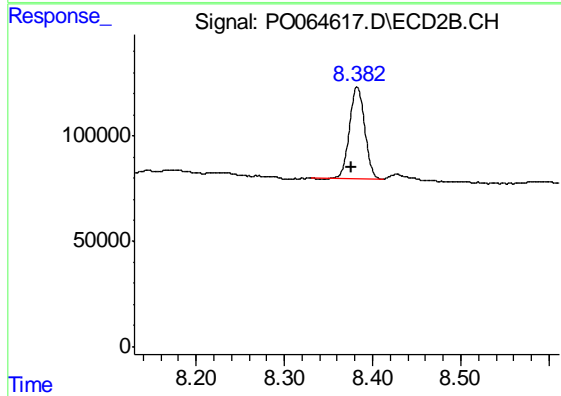
#1 Tetrachloro-m-xylene

R.T.: 3.459 min
Delta R.T.: 0.002 min
Response: 691526
Conc: 27.28 ng/ml



#2 Decachlorobiphenyl

R.T.: 9.697 min
Delta R.T.: 0.010 min
Response: 453104
Conc: 14.76 ng/ml



#2 Decachlorobiphenyl

R.T.: 8.383 min
Delta R.T.: 0.006 min
Response: 516405
Conc: 14.87 ng/ml