

Data Path : Z:\pestpcbsrv\HPCHEM1\ECD_O\Data\PO121419\
 Data File : P0064645.D
 Signal(s) : Signal #1: ECD1A.CH Signal #2: ECD2B.CH
 Acq On : 14 Dec 2019 2:12
 Operator : SM/AJ
 Sample : K6143-06
 Misc :
 ALS Vial : 33 Sample Multiplier: 1

Instrument :
 ECD_O
ClientSampled :
 8F

Manual Integrations
APPROVED
 Ankita
 12/16/2019 10:10:38 AM

Integration File signal 1: autoint1.e
 Integration File signal 2: autoint2.e
 Quant Time: Dec 14 03:03:42 2019
 Quant Method : Z:\pestpcbsrv\HPCHEM1\ECD_O\methods\PO121319.M
 Quant Title : GC EXTRACTABLES
 QLast Update : Fri Dec 13 08:19:24 2019
 Response via : Initial Calibration
 Integrator: ChemStation 6890 Scale Mode: Small noise peaks clipped

Volume Inj. : 2 µl
 Signal #1 Phase : ZB-MR1 Signal #2 Phase: ZB-MR2
 Signal #1 Info : 30Mx0.32mmx 0.50µ Signal #2 Info : 30M x 0.32mm x 0.25µm

Compound	RT#1	RT#2	Resp#1	Resp#2	ng/ml	ng/ml

System Monitoring Compounds						
1) SA Tetrachlo...	4.182	3.460	531810	680065	21.845	26.828
2) SA Decachlor...	9.702	8.386	368526	469849	12.008	13.529
Target Compounds						
26) L6 AR-1254-1	6.176	5.318	59516	66757	46.733	32.874 #
27) L6 AR-1254-2	6.393	5.463	260847	157165	125.404	86.194m#
28) L6 AR-1254-3	6.758	5.863	336341	376933	140.859	121.340m
29) L6 AR-1254-4	7.039	6.089	202254	213271	108.161m	103.831m
30) L6 AR-1254-5	7.453	6.505	890581	987313	423.275m	330.771
31) L7 AR-1260-1	6.918	5.991	341811	564110	222.489m	305.502 #
32) L7 AR-1260-2	7.174	6.179	660996	936878	334.851m	402.680
33) L7 AR-1260-3	7.529	6.331	708105	446949	471.250m	211.092m#
34) L7 AR-1260-4	7.752	6.799	763106	610915	413.110m	324.282
35) L7 AR-1260-5	8.059	7.041	1028042	1422582	275.488m	303.321

(f)=RT Delta > 1/2 Window (#)=Amounts differ by > 25% (m)=manual int.

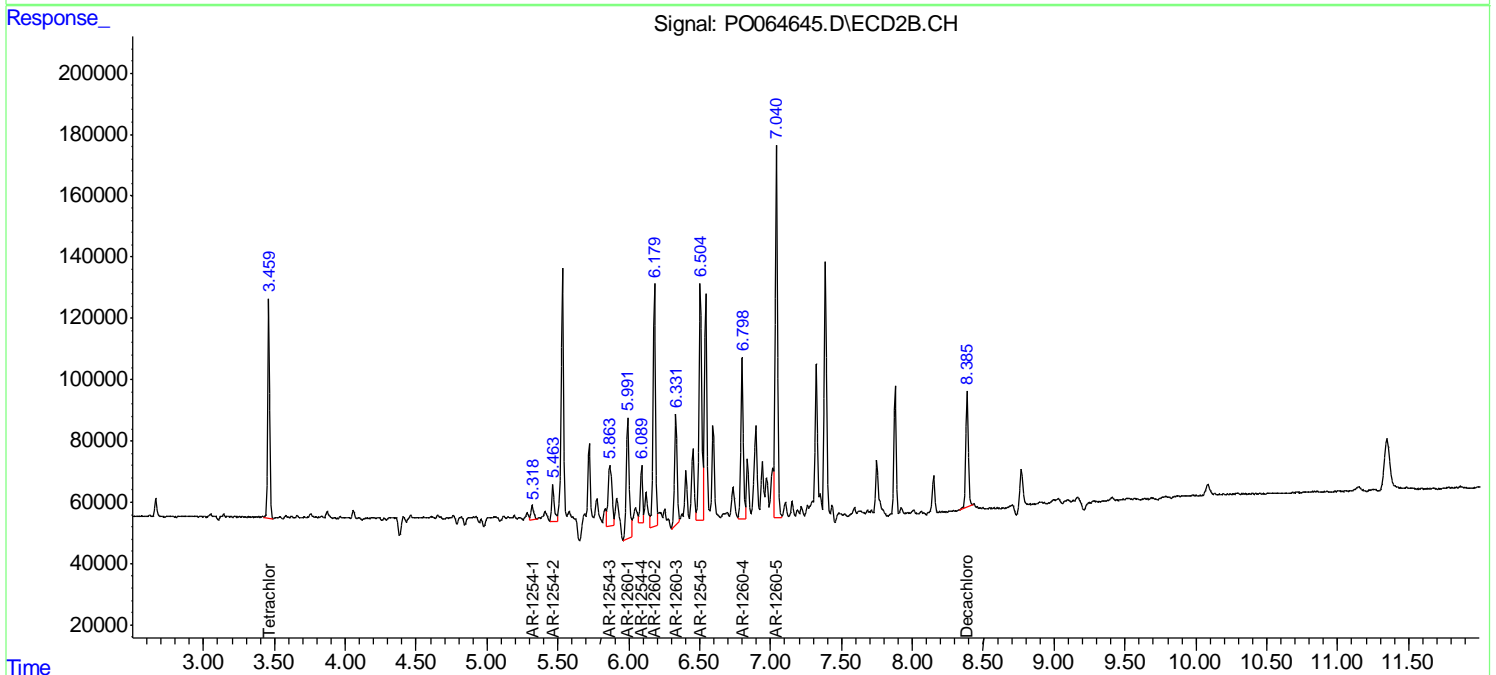
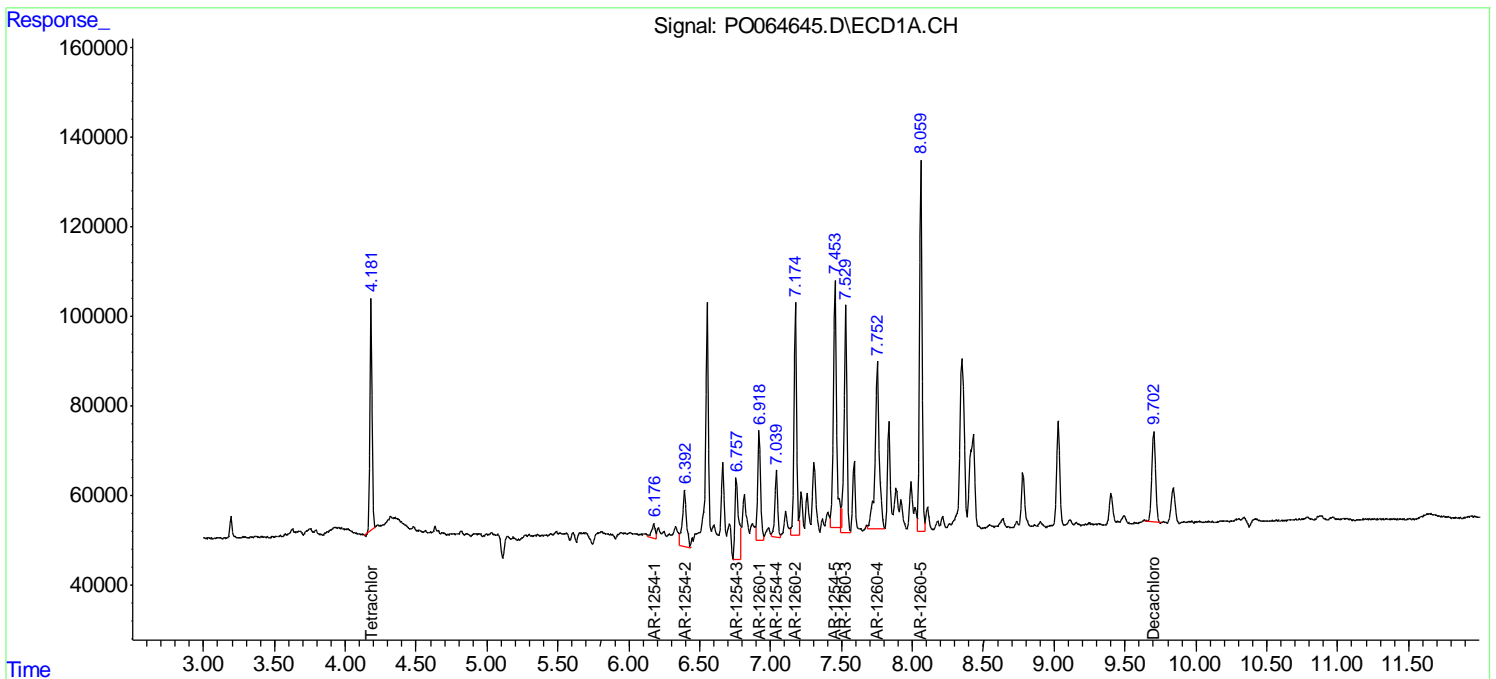
Data Path : Z:\pestpcbsrv\HPCHEM1\ECD_O\Data\PO121419\
 Data File : PO064645.D
 Signal(s) : Signal #1: ECD1A.CH Signal #2: ECD2B.CH
 Acq On : 14 Dec 2019 2:12
 Operator : SM/AJ
 Sample : K6143-06
 Misc :
 ALS Vial : 33 Sample Multiplier: 1

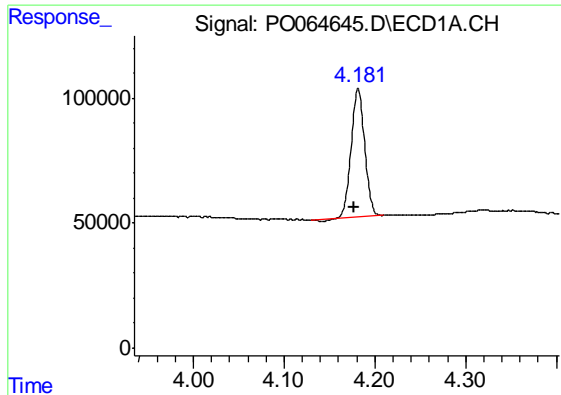
Instrument :
 ECD_O
 ClientSampled :
 8F

Manual Integrations
APPROVED
 Ankita
 12/16/2019 10:10:38 AM

Integration File signal 1: autoint1.e
 Integration File signal 2: autoint2.e
 Quant Time: Dec 14 03:03:42 2019
 Quant Method : Z:\pestpcbsrv\HPCHEM1\ECD_O\methods\PO121319.M
 Quant Title : GC EXTRACTABLES
 QLast Update : Fri Dec 13 08:19:24 2019
 Response via : Initial Calibration
 Integrator: ChemStation 6890 Scale Mode: Small noise peaks clipped

Volume Inj. : 2 µl
 Signal #1 Phase : ZB-MR1 Signal #2 Phase: ZB-MR2
 Signal #1 Info : 30Mx0.32mmx 0.50µ Signal #2 Info : 30M x 0.32mm x 0.25µm





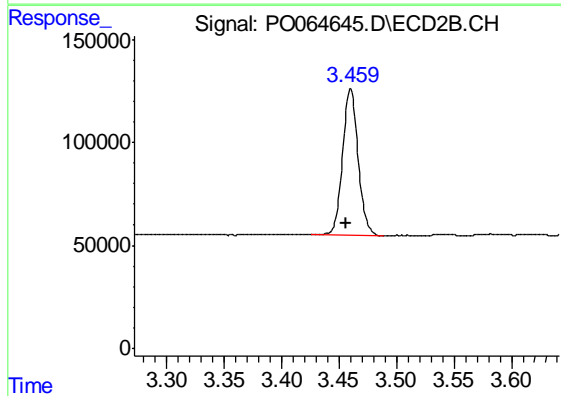
#1 Tetrachloro-m-xylene

R.T.: 4.182 min
 Delta R.T.: 0.005 min
 Response: 531810
 Conc: 21.84 ng/ml

Instrument :
 ECD_O
 ClientSampleId :
 8F

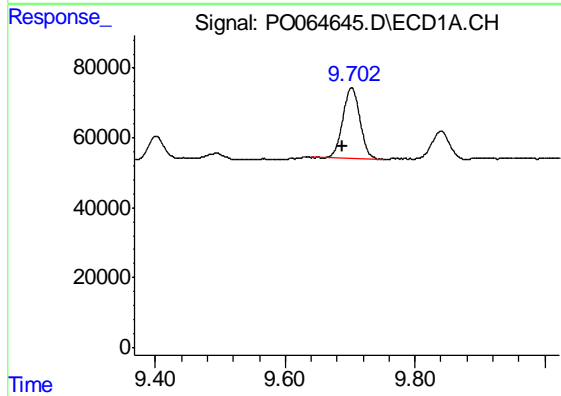
Manual Integrations
 APPROVED

Ankita
 12/16/2019 10:10:38 AM



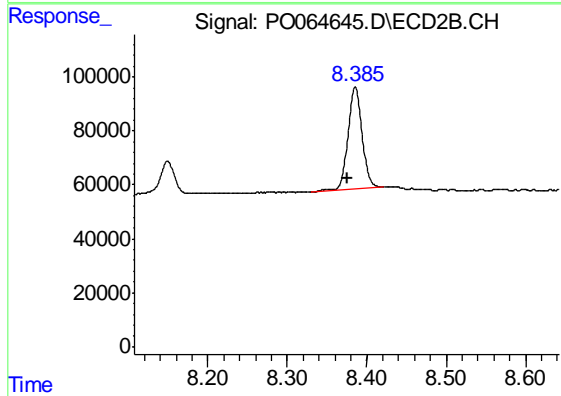
#1 Tetrachloro-m-xylene

R.T.: 3.460 min
 Delta R.T.: 0.003 min
 Response: 680065
 Conc: 26.83 ng/ml



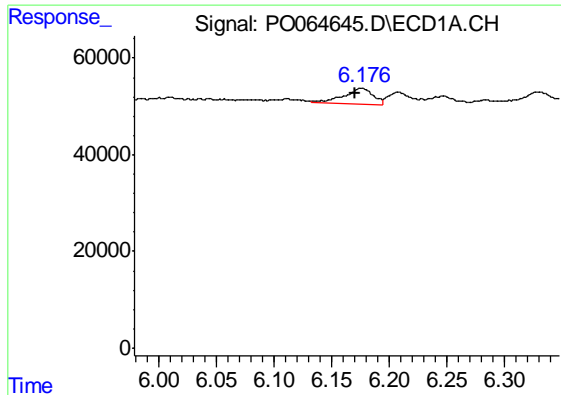
#2 Decachlorobiphenyl

R.T.: 9.702 min
 Delta R.T.: 0.015 min
 Response: 368526
 Conc: 12.01 ng/ml



#2 Decachlorobiphenyl

R.T.: 8.386 min
 Delta R.T.: 0.009 min
 Response: 469849
 Conc: 13.53 ng/ml



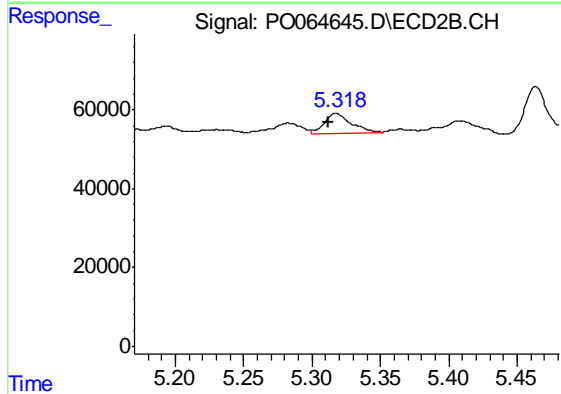
#26 AR-1254-1

R.T.: 6.176 min
 Delta R.T.: 0.006 min
 Response: 59516
 Conc: 46.73 ng/ml

Instrument :
 ECD_O
 ClientSampled :
 8F

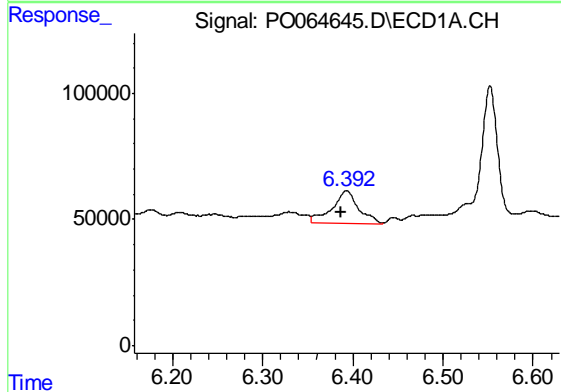
Manual Integrations
 APPROVED

Ankita
 12/16/2019 10:10:38 AM



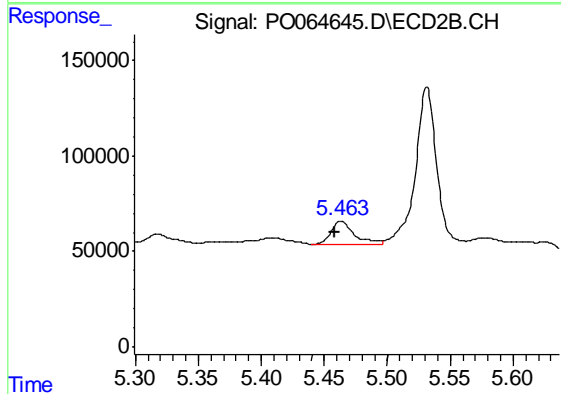
#26 AR-1254-1

R.T.: 5.318 min
 Delta R.T.: 0.005 min
 Response: 66757
 Conc: 32.87 ng/ml



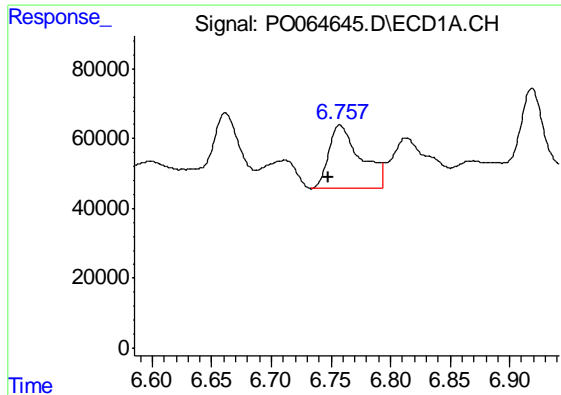
#27 AR-1254-2

R.T.: 6.393 min
 Delta R.T.: 0.006 min
 Response: 260847
 Conc: 125.40 ng/ml



#27 AR-1254-2

R.T.: 5.463 min
 Delta R.T.: 0.004 min
 Response: 157165
 Conc: 86.19 ng/ml m



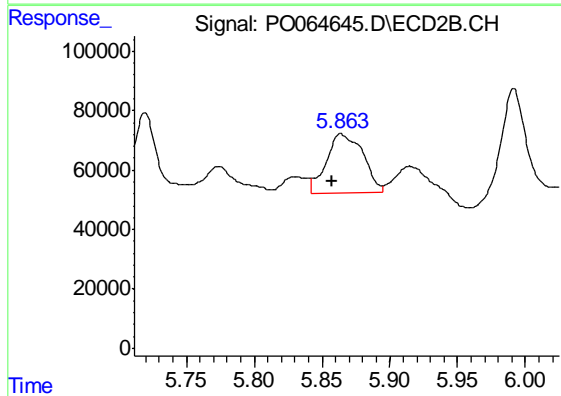
#28 AR-1254-3

R.T.: 6.758 min
 Delta R.T.: 0.010 min
 Response: 336341
 Conc: 140.86 ng/ml

Instrument :
 ECD_O
 ClientSampled :
 8F

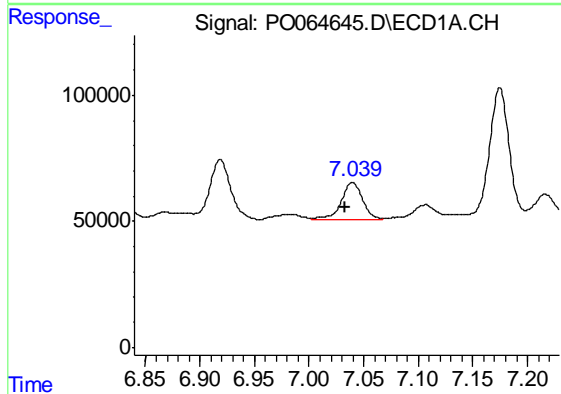
Manual Integrations
 APPROVED

Ankita
 12/16/2019 10:10:38 AM



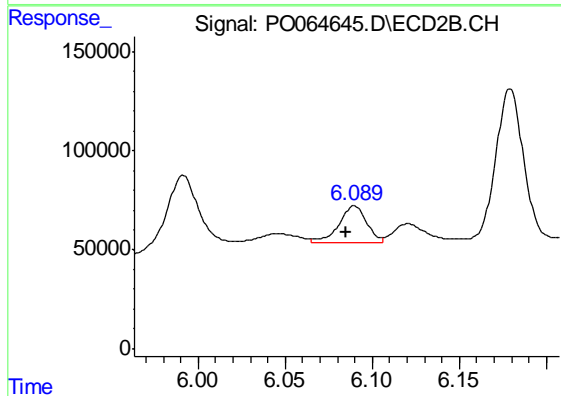
#28 AR-1254-3

R.T.: 5.863 min
 Delta R.T.: 0.006 min
 Response: 376933
 Conc: 121.34 ng/ml m



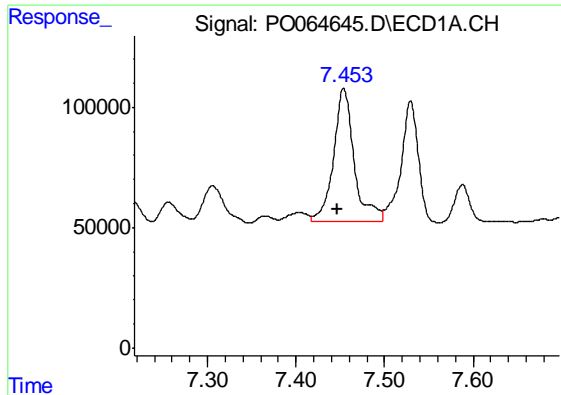
#29 AR-1254-4

R.T.: 7.039 min
 Delta R.T.: 0.007 min
 Response: 202254
 Conc: 108.16 ng/ml m



#29 AR-1254-4

R.T.: 6.089 min
 Delta R.T.: 0.004 min
 Response: 213271
 Conc: 103.83 ng/ml m



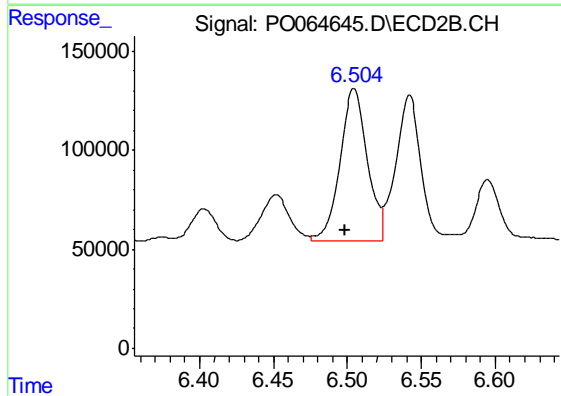
#30 AR-1254-5

R.T.: 7.453 min
 Delta R.T.: 0.006 min
 Response: 890581
 Conc: 423.28 ng/ml m

Instrument :
 ECD_O
 ClientSampled :
 8F

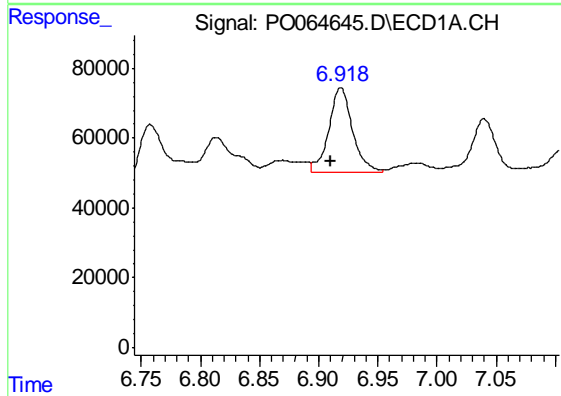
Manual Integrations
 APPROVED

Ankita
 12/16/2019 10:10:38 AM



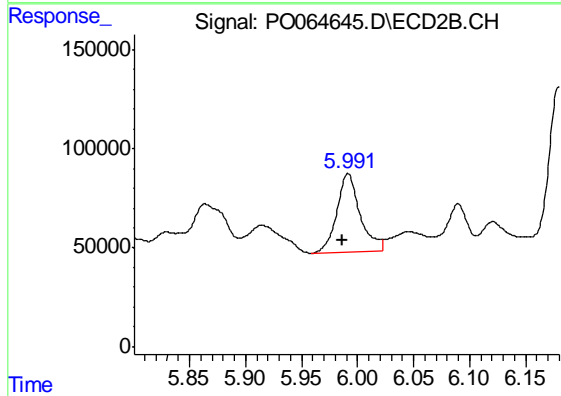
#30 AR-1254-5

R.T.: 6.505 min
 Delta R.T.: 0.006 min
 Response: 987313
 Conc: 330.77 ng/ml



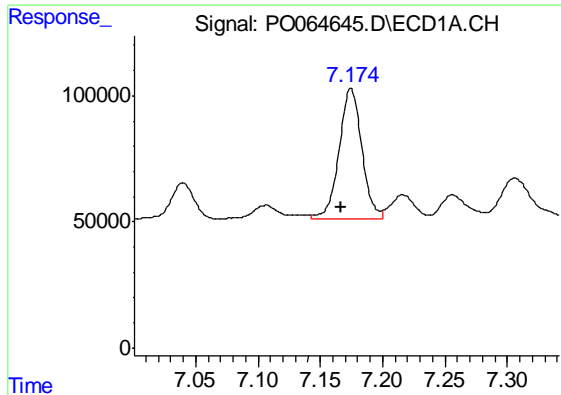
#31 AR-1260-1

R.T.: 6.918 min
 Delta R.T.: 0.008 min
 Response: 341811
 Conc: 222.49 ng/ml m



#31 AR-1260-1

R.T.: 5.991 min
 Delta R.T.: 0.006 min
 Response: 564110
 Conc: 305.50 ng/ml



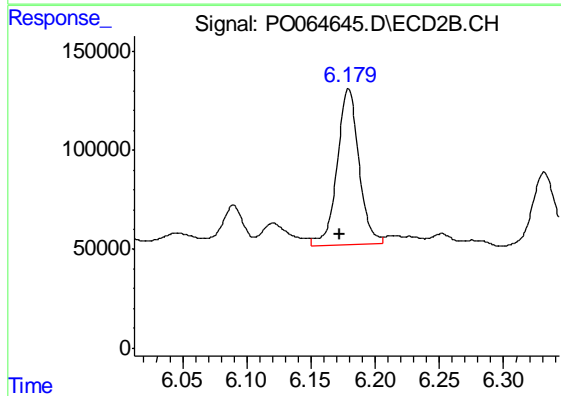
#32 AR-1260-2

R.T.: 7.174 min
 Delta R.T.: 0.008 min
 Response: 660996
 Conc: 334.85 ng/ml m

Instrument :
 ECD_O
 ClientSampled :
 8F

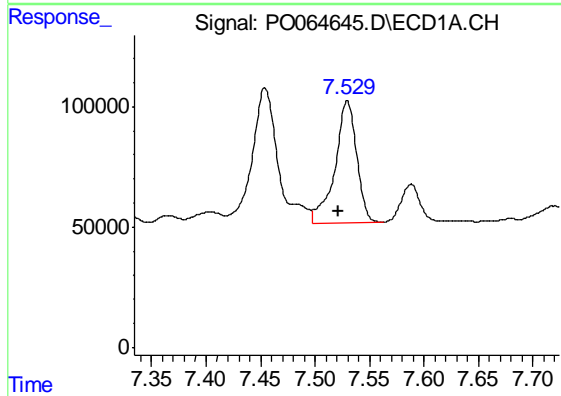
Manual Integrations
 APPROVED

Ankita
 12/16/2019 10:10:38 AM



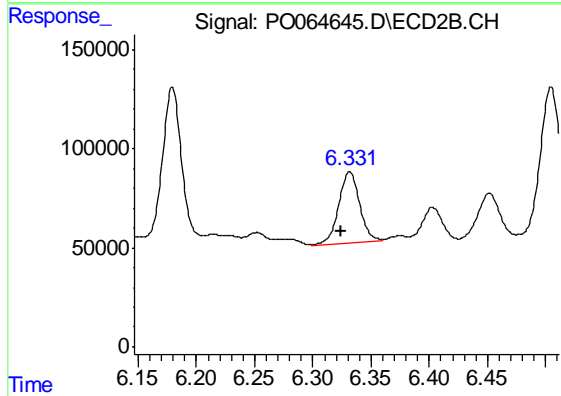
#32 AR-1260-2

R.T.: 6.179 min
 Delta R.T.: 0.006 min
 Response: 936878
 Conc: 402.68 ng/ml



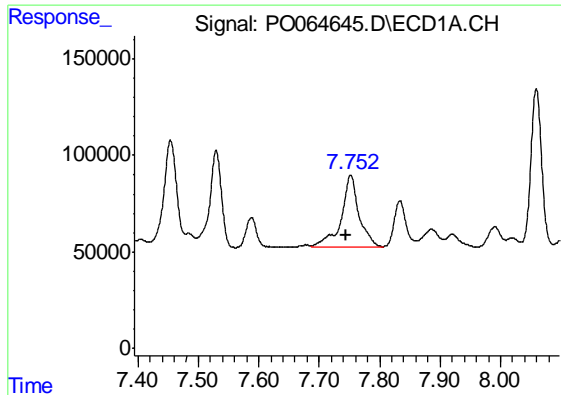
#33 AR-1260-3

R.T.: 7.529 min
 Delta R.T.: 0.008 min
 Response: 708105
 Conc: 471.25 ng/ml m



#33 AR-1260-3

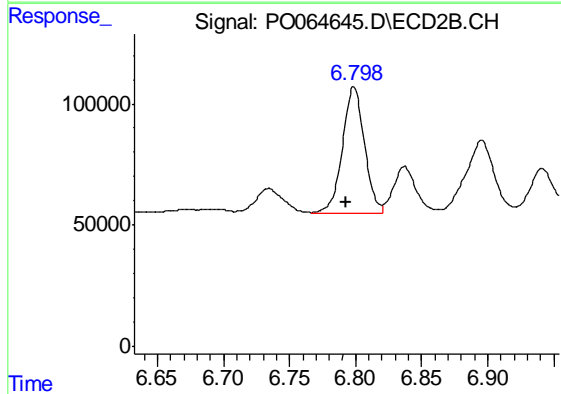
R.T.: 6.331 min
 Delta R.T.: 0.007 min
 Response: 446949
 Conc: 211.09 ng/ml m



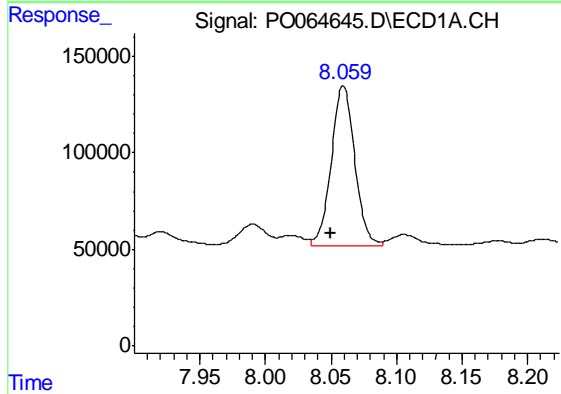
#34 AR-1260-4
 R.T.: 7.752 min
 Delta R.T.: 0.008 min
 Response: 763106
 Conc: 413.11 ng/ml m

Instrument :
 ECD_O
 ClientSampleId :
 8F

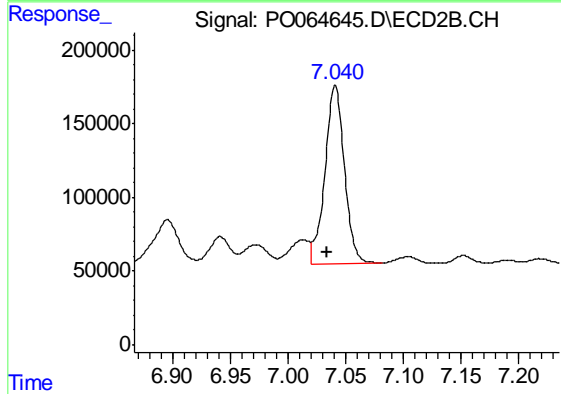
Manual Integrations
 APPROVED
 Ankita
 12/16/2019 10:10:38 AM



#34 AR-1260-4
 R.T.: 6.799 min
 Delta R.T.: 0.006 min
 Response: 610915
 Conc: 324.28 ng/ml



#35 AR-1260-5
 R.T.: 8.059 min
 Delta R.T.: 0.009 min
 Response: 1028042
 Conc: 275.49 ng/ml m



#35 AR-1260-5
 R.T.: 7.041 min
 Delta R.T.: 0.007 min
 Response: 1422582
 Conc: 303.32 ng/ml