

Data Path : Z:\pestpcbsrv\HPCHEM1\ECD_O\Data\PO121519\
 Data File : P0064657.D
 Signal(s) : Signal #1: ECD1A.CH Signal #2: ECD2B.CH
 Acq On : 15 Dec 2019 11:55
 Operator : SM/AJ
 Sample : K6110-01MS
 Misc :
 ALS Vial : 5 Sample Multiplier: 1

Instrument :
 ECD_O
ClientSampleId :
 HD-02-121219MS

Manual Integrations
APPROVED
 Ankita
 12/16/2019 10:54:50 AM

Integration File signal 1: autoint1.e
 Integration File signal 2: autoint2.e
 Quant Time: Dec 16 00:40:40 2019
 Quant Method : Z:\pestpcbsrv\HPCHEM1\ECD_O\methods\PO121319.M
 Quant Title : GC EXTRACTABLES
 QLast Update : Fri Dec 13 08:19:24 2019
 Response via : Initial Calibration
 Integrator: ChemStation 6890 Scale Mode: Small noise peaks clipped

Volume Inj. : 2 µl
 Signal #1 Phase : ZB-MR1 Signal #2 Phase: ZB-MR2
 Signal #1 Info : 30Mx0.32mmx 0.50µ Signal #2 Info : 30M x 0.32mm x 0.25µm

Compound	RT#1	RT#2	Resp#1	Resp#2	ng/ml	ng/ml

System Monitoring Compounds						
1) SA Tetrachlo...	4.181	3.456	794372	778487	32.630	30.710
2) SA Decachlor...	9.705	8.382	792025	944525	25.807	27.197
Target Compounds						
3) L1 AR-1016-1	5.334	4.522	281296	253695	281.907m	234.580m
4) L1 AR-1016-2	5.356	4.540	394385	401864	271.562m	267.217m
5) L1 AR-1016-3	5.417	4.713	244767	273696	276.636m	352.081m#
6) L1 AR-1016-4	5.514	4.756	212561	189876	293.462m	288.789m
7) L1 AR-1016-5	5.805	4.965	160579	307409	220.342m	352.307m#
31) L7 AR-1260-1	6.919	5.988	419412	539301	273.000m	292.067
32) L7 AR-1260-2	7.175	6.175	488881	761224	247.660m	327.182 #
33) L7 AR-1260-3	7.532	6.327	372181	593223	247.689	280.176
34) L7 AR-1260-4	7.755	6.796	444974	502003	240.888	266.470
35) L7 AR-1260-5	8.061	7.037	902100	1165897	241.739	248.591

(f)=RT Delta > 1/2 Window (#)=Amounts differ by > 25% (m)=manual int.

Data Path : Z:\pestpcbsrv\HPCHEM1\ECD_O\Data\PO121519\
 Data File : PO064657.D
 Signal(s) : Signal #1: ECD1A.CH Signal #2: ECD2B.CH
 Acq On : 15 Dec 2019 11:55
 Operator : SM/AJ
 Sample : K6110-01MS
 Misc :
 ALS Vial : 5 Sample Multiplier: 1

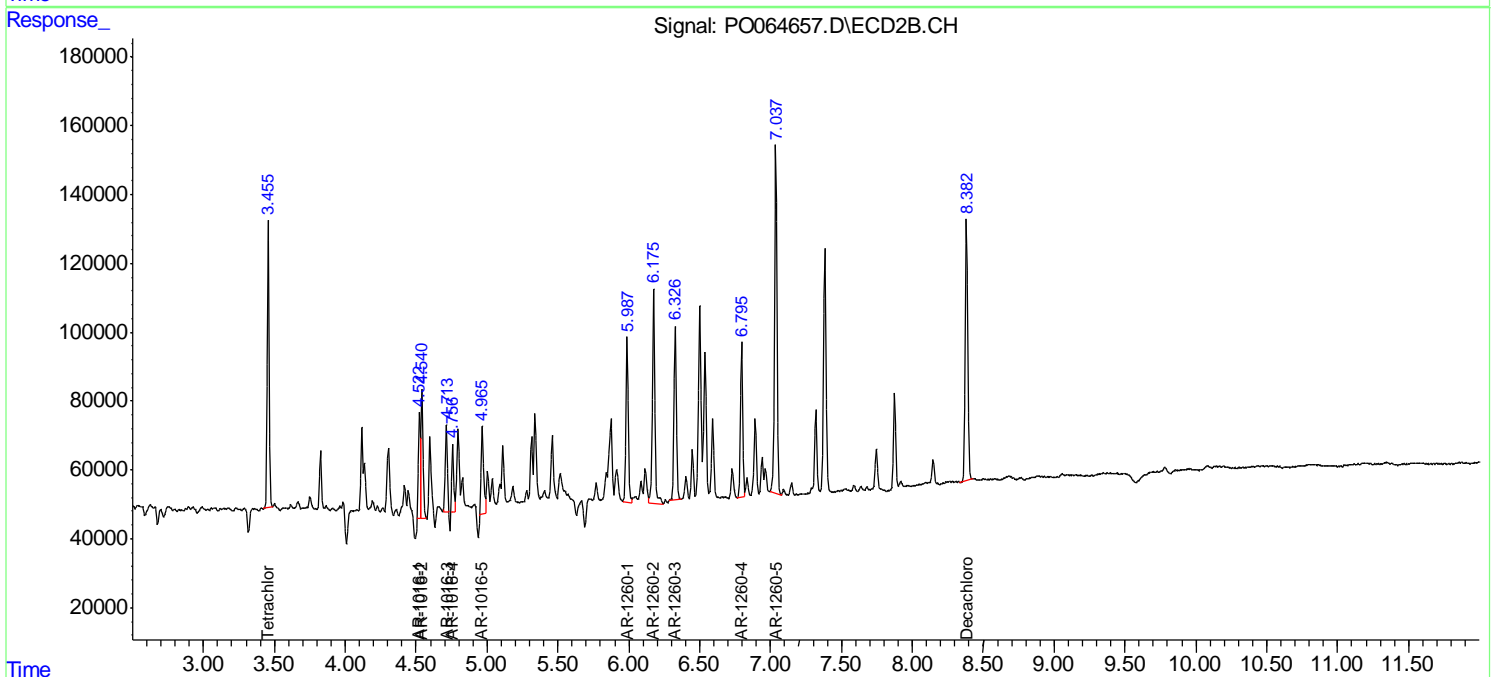
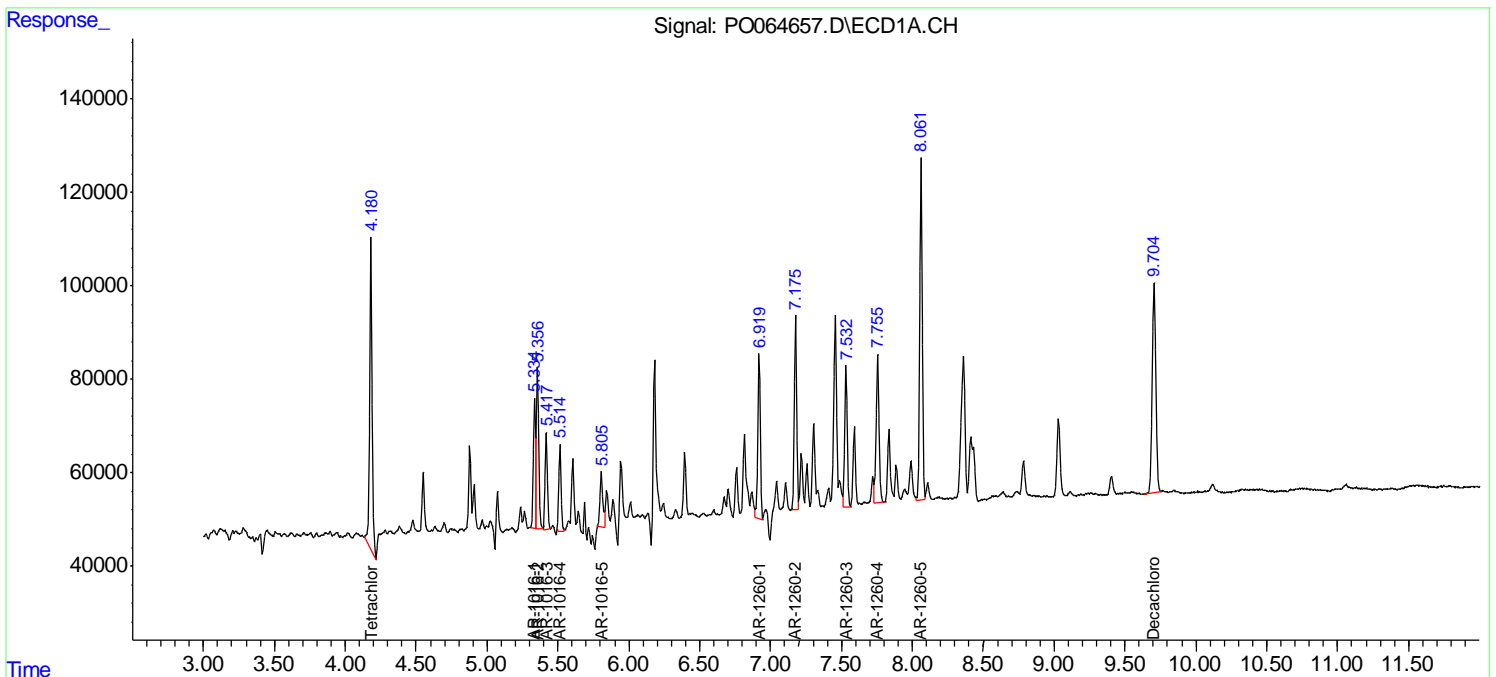
Instrument :
 ECD_O
 Client Sampled :
 HD-02-121219MS

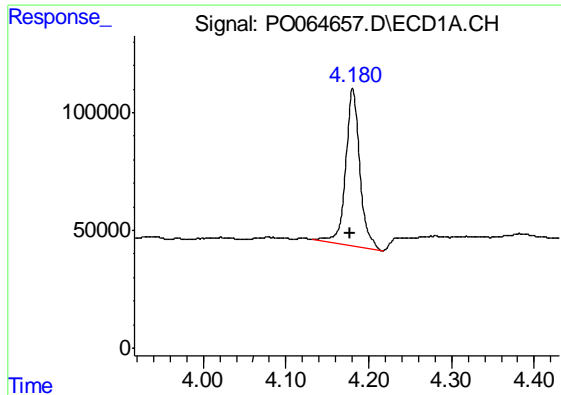
Manual Integrations
 APPROVED

Ankita
 12/16/2019 10:54:50 AM

Integration File signal 1: autoint1.e
 Integration File signal 2: autoint2.e
 Quant Time: Dec 16 00:40:40 2019
 Quant Method : Z:\pestpcbsrv\HPCHEM1\ECD_O\methods\PO121319.M
 Quant Title : GC EXTRACTABLES
 QLast Update : Fri Dec 13 08:19:24 2019
 Response via : Initial Calibration
 Integrator: ChemStation 6890 Scale Mode: Small noise peaks clipped

Volume Inj. : 2 µl
 Signal #1 Phase : ZB-MR1 Signal #2 Phase: ZB-MR2
 Signal #1 Info : 30Mx0.32mmx 0.50µ Signal #2 Info : 30M x 0.32mm x 0.25µm





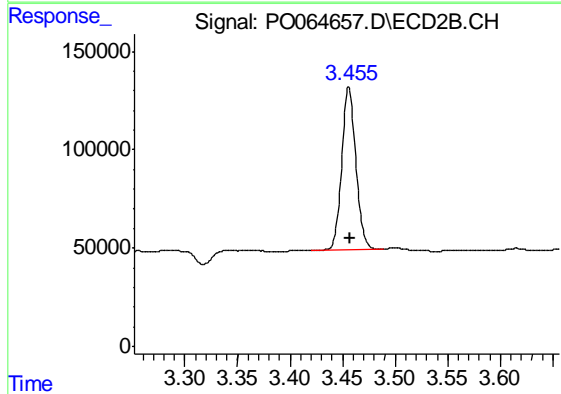
#1 Tetrachloro-m-xylene

R.T.: 4.181 min
 Delta R.T.: 0.004 min
 Response: 794372
 Conc: 32.63 ng/ml

Instrument :
 ECD_O
 ClientSampleId :
 HD-02-121219MS

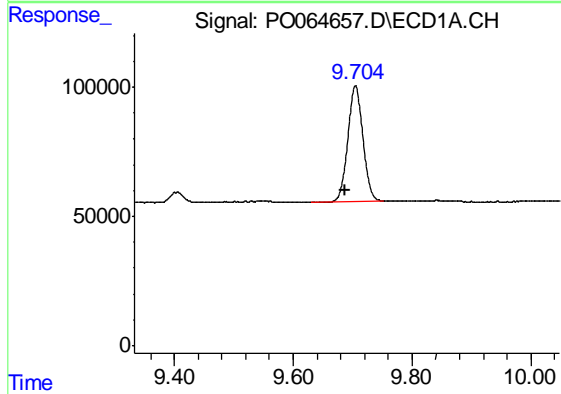
Manual Integrations
 APPROVED

Ankita
 12/16/2019 10:54:50 AM



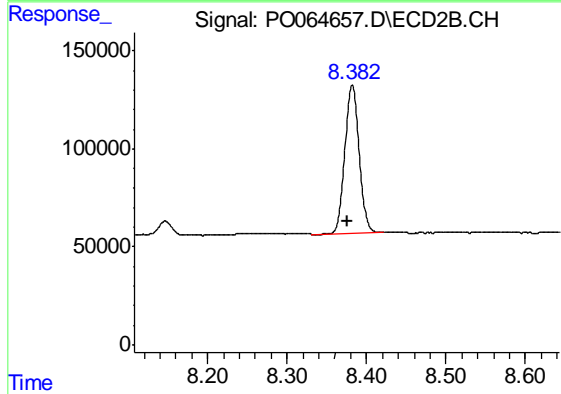
#1 Tetrachloro-m-xylene

R.T.: 3.456 min
 Delta R.T.: 0.000 min
 Response: 778487
 Conc: 30.71 ng/ml



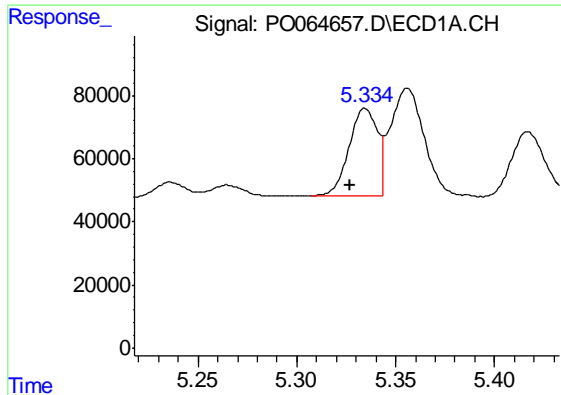
#2 Decachlorobiphenyl

R.T.: 9.705 min
 Delta R.T.: 0.017 min
 Response: 792025
 Conc: 25.81 ng/ml



#2 Decachlorobiphenyl

R.T.: 8.382 min
 Delta R.T.: 0.006 min
 Response: 944525
 Conc: 27.20 ng/ml



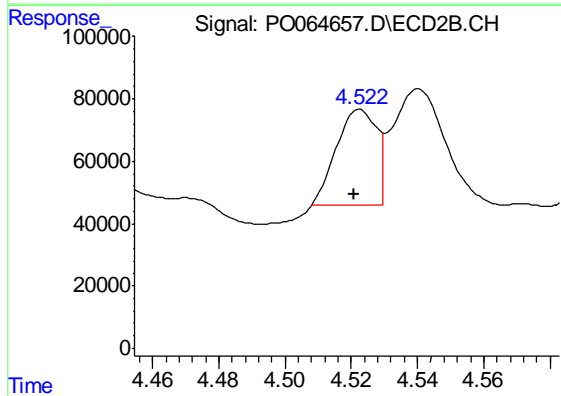
#3 AR-1016-1

R.T.: 5.334 min
 Delta R.T.: 0.007 min
 Response: 281296
 Conc: 281.91 ng/ml m

Instrument :
 ECD_O
 ClientSampleId :
 HD-02-121219MS

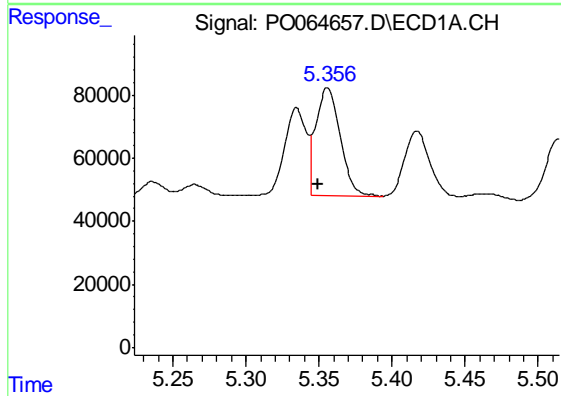
Manual Integrations
 APPROVED

Ankita
 12/16/2019 10:54:50 AM



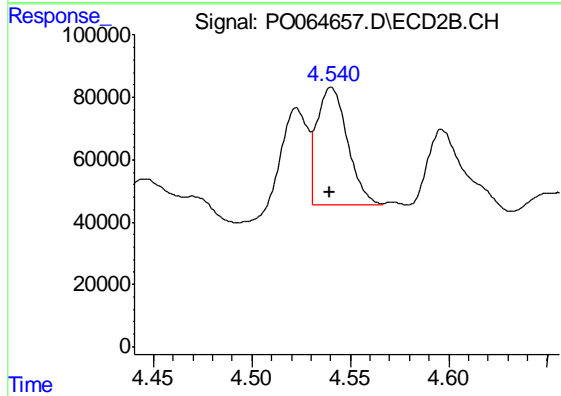
#3 AR-1016-1

R.T.: 4.522 min
 Delta R.T.: 0.001 min
 Response: 253695
 Conc: 234.58 ng/ml m



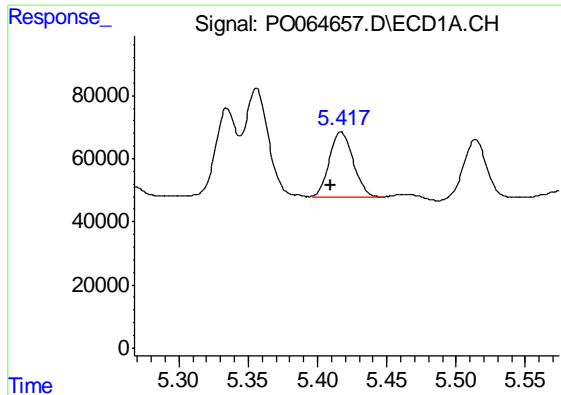
#4 AR-1016-2

R.T.: 5.356 min
 Delta R.T.: 0.006 min
 Response: 394385
 Conc: 271.56 ng/ml m



#4 AR-1016-2

R.T.: 4.540 min
 Delta R.T.: 0.000 min
 Response: 401864
 Conc: 267.22 ng/ml m



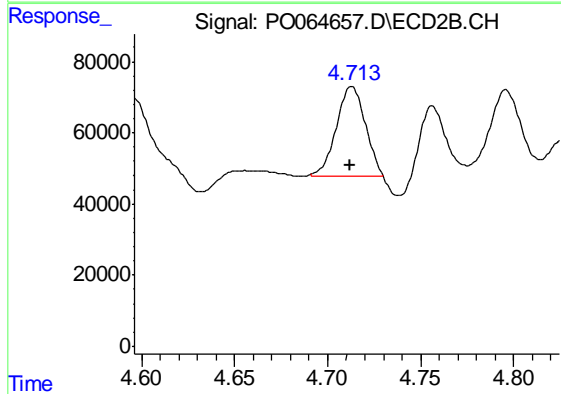
#5 AR-1016-3

R.T.: 5.417 min
 Delta R.T.: 0.007 min
 Response: 244767
 Conc: 276.64 ng/ml m

Instrument :
 ECD_O
 ClientSampleId :
 HD-02-121219MS

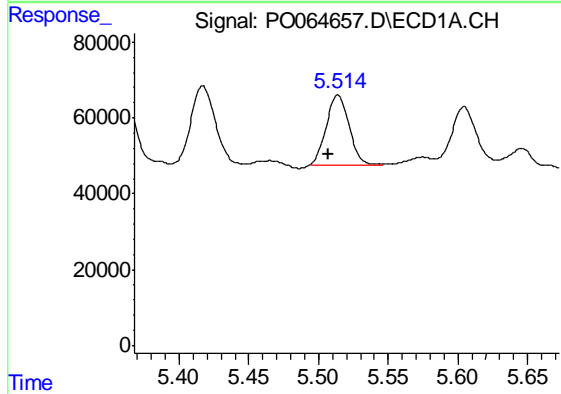
Manual Integrations
 APPROVED

Ankita
 12/16/2019 10:54:50 AM



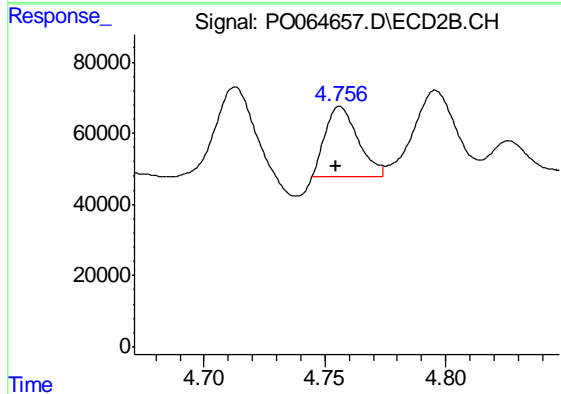
#5 AR-1016-3

R.T.: 4.713 min
 Delta R.T.: 0.000 min
 Response: 273696
 Conc: 352.08 ng/ml m



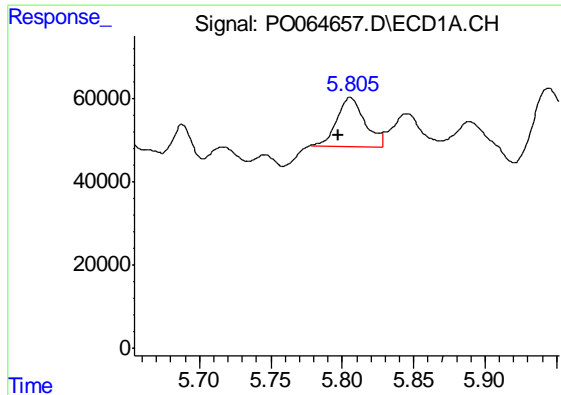
#6 AR-1016-4

R.T.: 5.514 min
 Delta R.T.: 0.006 min
 Response: 212561
 Conc: 293.46 ng/ml m



#6 AR-1016-4

R.T.: 4.756 min
 Delta R.T.: 0.001 min
 Response: 189876
 Conc: 288.79 ng/ml m



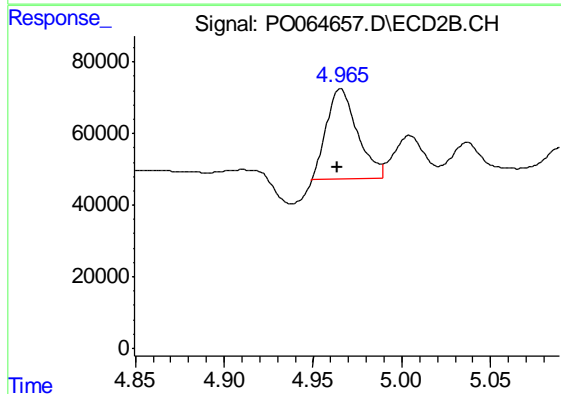
#7 AR-1016-5

R.T.: 5.805 min
 Delta R.T.: 0.008 min
 Response: 160579
 Conc: 220.34 ng/ml m

Instrument :
 ECD_O
 ClientSampleId :
 HD-02-121219MS

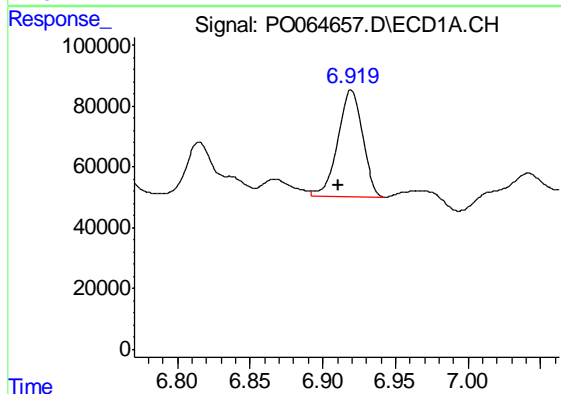
Manual Integrations
 APPROVED

Ankita
 12/16/2019 10:54:50 AM



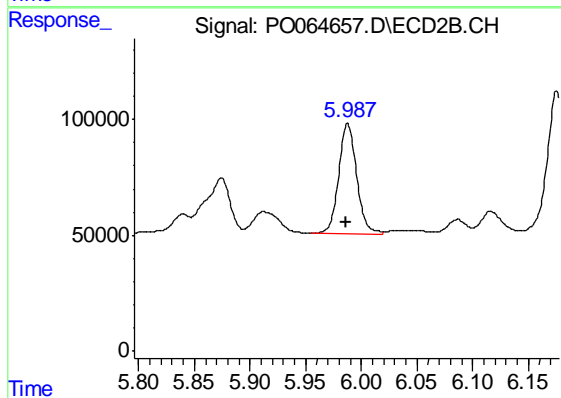
#7 AR-1016-5

R.T.: 4.965 min
 Delta R.T.: 0.001 min
 Response: 307409
 Conc: 352.31 ng/ml m



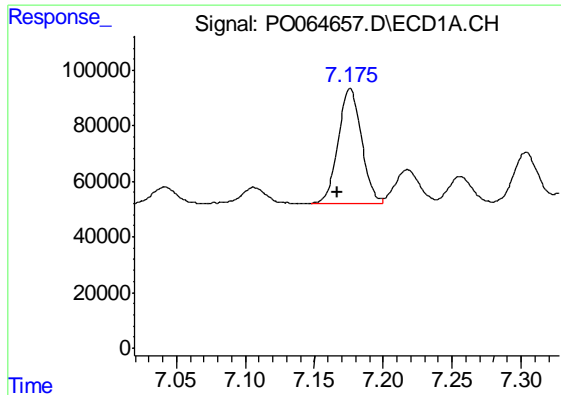
#31 AR-1260-1

R.T.: 6.919 min
 Delta R.T.: 0.009 min
 Response: 419412
 Conc: 273.00 ng/ml m



#31 AR-1260-1

R.T.: 5.988 min
 Delta R.T.: 0.002 min
 Response: 539301
 Conc: 292.07 ng/ml



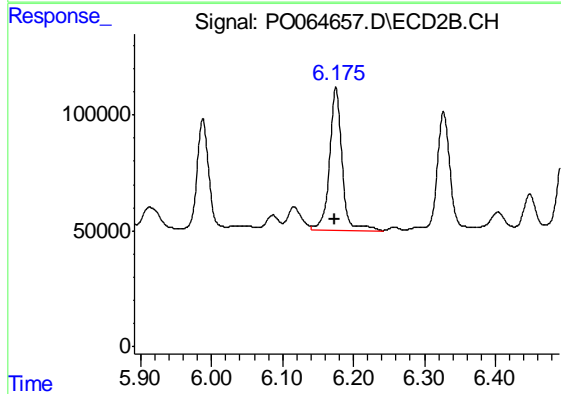
#32 AR-1260-2

R.T.: 7.175 min
 Delta R.T.: 0.009 min
 Response: 488881
 Conc: 247.66 ng/ml m

Instrument :
 ECD_O
 ClientSampleId :
 HD-02-121219MS

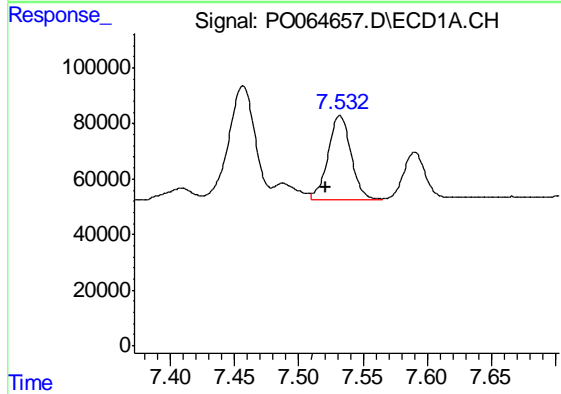
Manual Integrations
 APPROVED

Ankita
 12/16/2019 10:54:50 AM



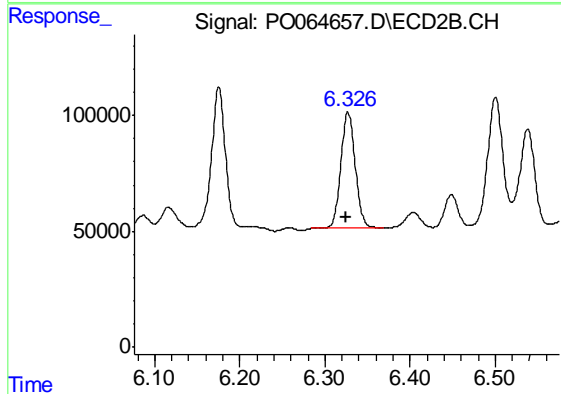
#32 AR-1260-2

R.T.: 6.175 min
 Delta R.T.: 0.002 min
 Response: 761224
 Conc: 327.18 ng/ml



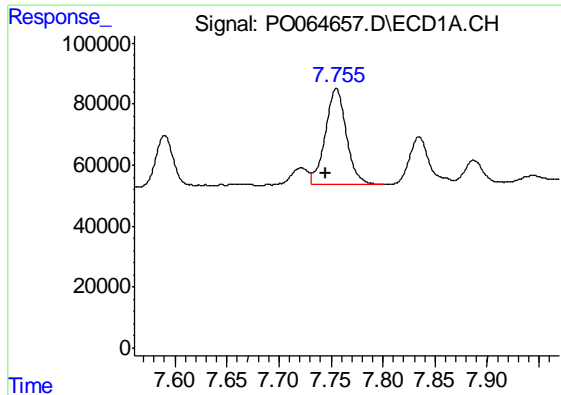
#33 AR-1260-3

R.T.: 7.532 min
 Delta R.T.: 0.011 min
 Response: 372181
 Conc: 247.69 ng/ml



#33 AR-1260-3

R.T.: 6.327 min
 Delta R.T.: 0.003 min
 Response: 593223
 Conc: 280.18 ng/ml



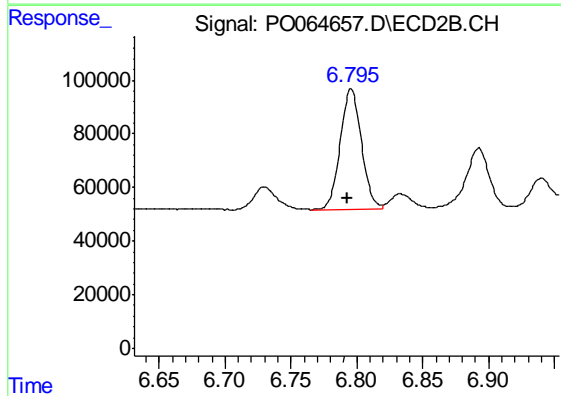
#34 AR-1260-4

R.T.: 7.755 min
 Delta R.T.: 0.011 min
 Response: 444974
 Conc: 240.89 ng/ml

Instrument :
 ECD_O
 ClientSampleId :
 HD-02-121219MS

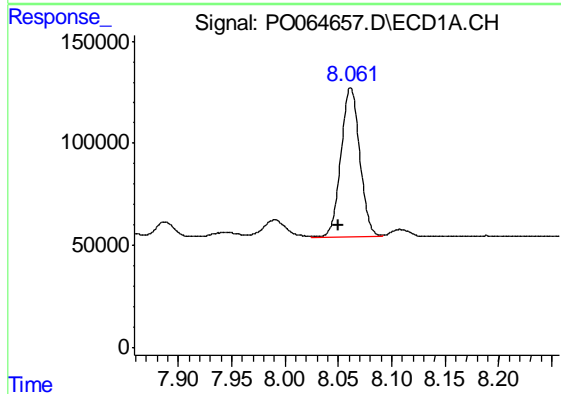
Manual Integrations
 APPROVED

Ankita
 12/16/2019 10:54:50 AM



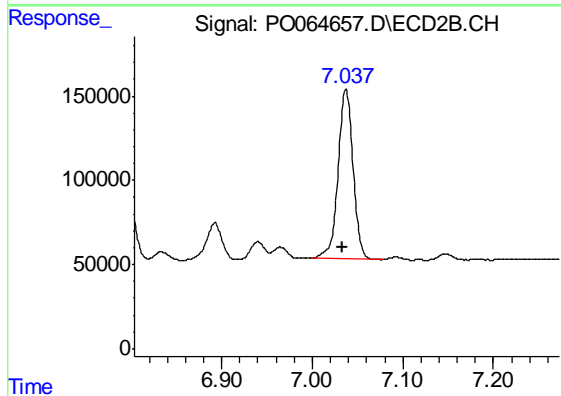
#34 AR-1260-4

R.T.: 6.796 min
 Delta R.T.: 0.003 min
 Response: 502003
 Conc: 266.47 ng/ml



#35 AR-1260-5

R.T.: 8.061 min
 Delta R.T.: 0.011 min
 Response: 902100
 Conc: 241.74 ng/ml



#35 AR-1260-5

R.T.: 7.037 min
 Delta R.T.: 0.004 min
 Response: 1165897
 Conc: 248.59 ng/ml