

Data Path : Z:\pestpcbsrv\HPCHEM1\ECD_O\Data\PO121519\
 Data File : P0064668.D
 Signal(s) : Signal #1: ECD1A.CH Signal #2: ECD2B.CH
 Acq On : 15 Dec 2019 14:58
 Operator : SM/AJ
 Sample : I.BLK
 Misc :
 ALS Vial : 2 Sample Multiplier: 1

Instrument :
 ECD_O
 ClientSampleId :
 I.BLK

Manual Integrations
 APPROVED

Ankita
 12/16/2019 10:55:20 AM

Integration File signal 1: autoint1.e
 Integration File signal 2: autoint2.e
 Quant Time: Dec 16 00:44:08 2019
 Quant Method : Z:\pestpcbsrv\HPCHEM1\ECD_O\methods\PO121319.M
 Quant Title : GC EXTRACTABLES
 QLast Update : Fri Dec 13 08:19:24 2019
 Response via : Initial Calibration
 Integrator: ChemStation 6890 Scale Mode: Small noise peaks clipped

Volume Inj. : 2 µl
 Signal #1 Phase : ZB-MR1 Signal #2 Phase: ZB-MR2
 Signal #1 Info : 30Mx0.32mmx 0.50µ Signal #2 Info : 30M x 0.32mm x 0.25µm

Compound	RT#1	RT#2	Resp#1	Resp#2	ng/ml	ng/ml
----------	------	------	--------	--------	-------	-------

 System Monitoring Compounds

1) SA Tetrachlo...	4.180	3.456	602735	710500	24.758m	28.028
2) SA Decachlor...	9.703	8.381	780169	961431	25.421	27.684

Target Compounds

(f)=RT Delta > 1/2 Window (#)=Amounts differ by > 25% (m)=manual int.

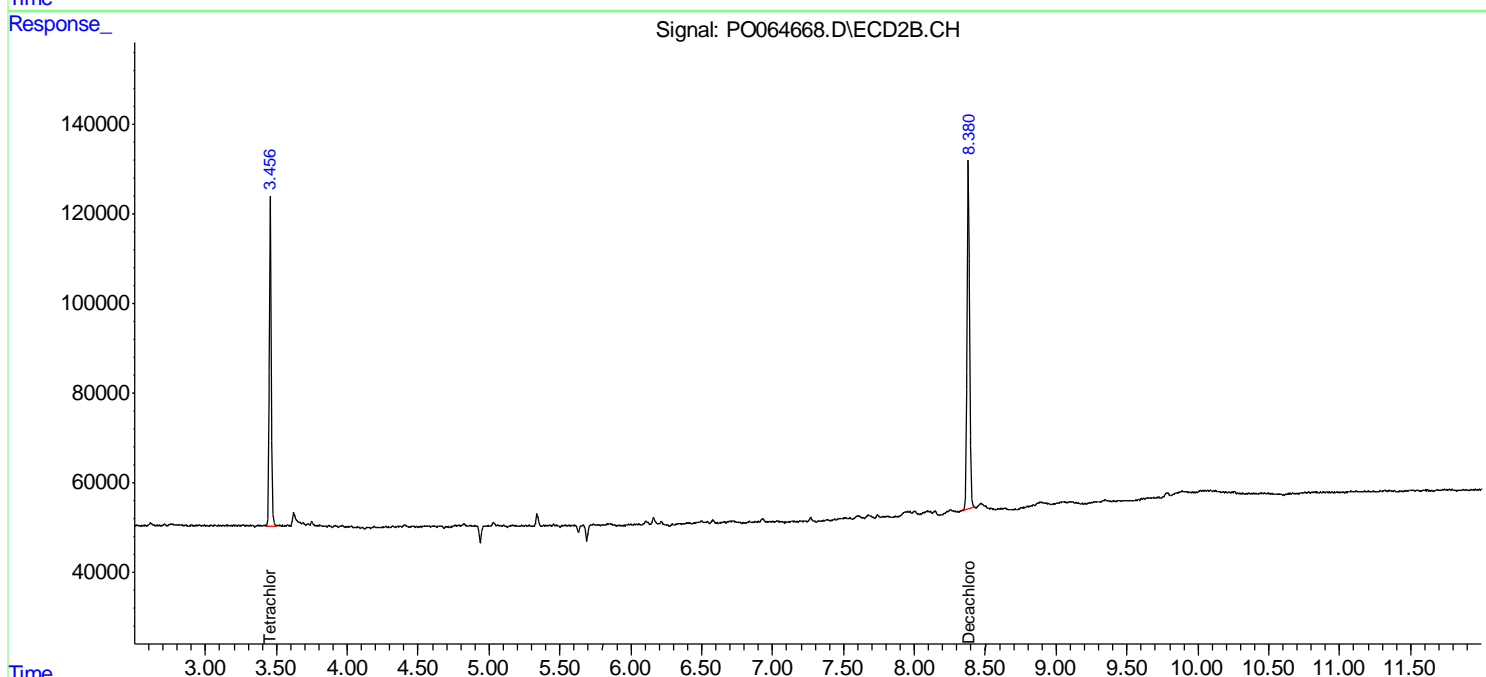
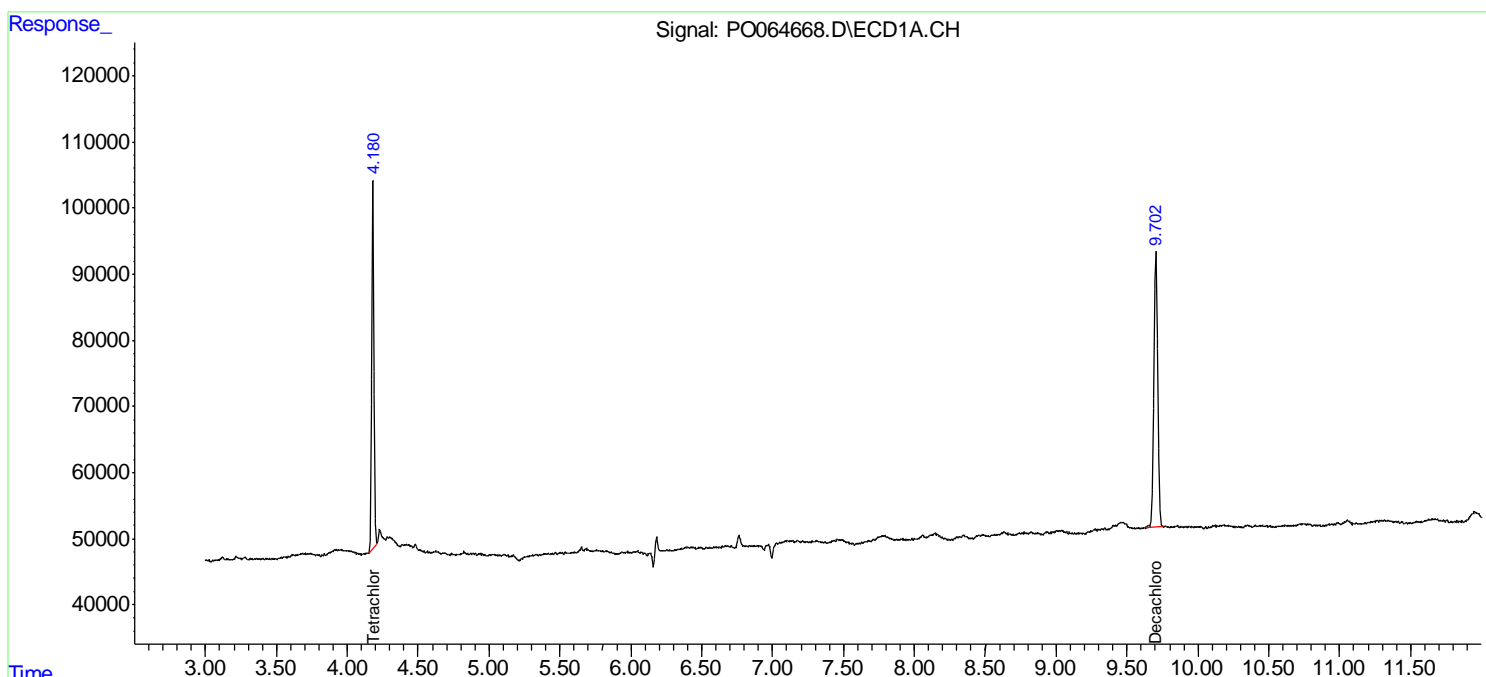
Data Path : Z:\pestpcbsrv\HPCHEM1\ECD_O\Data\PO121519\
 Data File : PO064668.D
 Signal(s) : Signal #1: ECD1A.CH Signal #2: ECD2B.CH
 Acq On : 15 Dec 2019 14:58
 Operator : SM/AJ
 Sample : I.BLK
 Misc :
 ALS Vial : 2 Sample Multiplier: 1

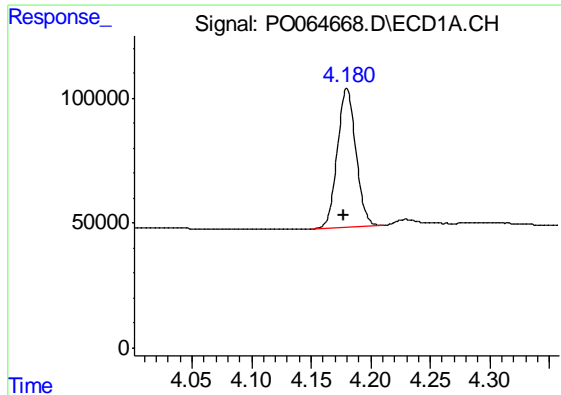
Instrument :
 ECD_O
ClientSampleId :
 I.BLK

Manual Integrations
APPROVED
 Ankita
 12/16/2019 10:55:20 AM

Integration File signal 1: autoint1.e
 Integration File signal 2: autoint2.e
 Quant Time: Dec 16 00:44:08 2019
 Quant Method : Z:\pestpcbsrv\HPCHEM1\ECD_O\methods\PO121319.M
 Quant Title : GC EXTRACTABLES
 QLast Update : Fri Dec 13 08:19:24 2019
 Response via : Initial Calibration
 Integrator: ChemStation 6890 Scale Mode: Small noise peaks clipped

Volume Inj. : 2 µl
 Signal #1 Phase : ZB-MR1 Signal #2 Phase: ZB-MR2
 Signal #1 Info : 30Mx0.32mmx 0.50µ Signal #2 Info : 30M x 0.32mm x 0.25µm





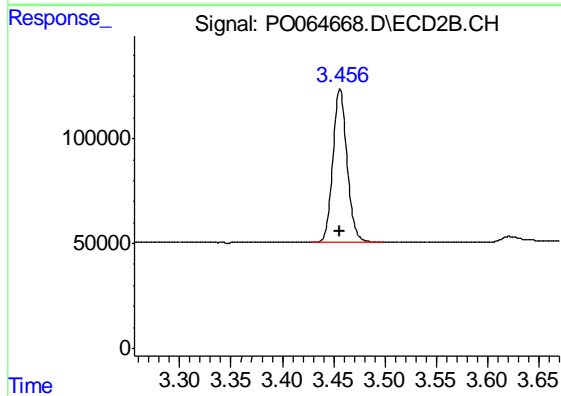
#1 Tetrachloro-m-xylene

R.T.: 4.180 min
 Delta R.T.: 0.003 min
 Response: 602735
 Conc: 24.76 ng/ml m

Instrument :
 ECD_O
 ClientSampled :
 I.BLK

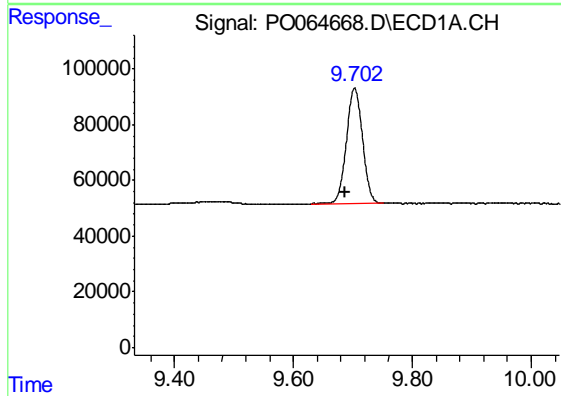
Manual Integrations
 APPROVED

Ankita
 12/16/2019 10:55:20 AM



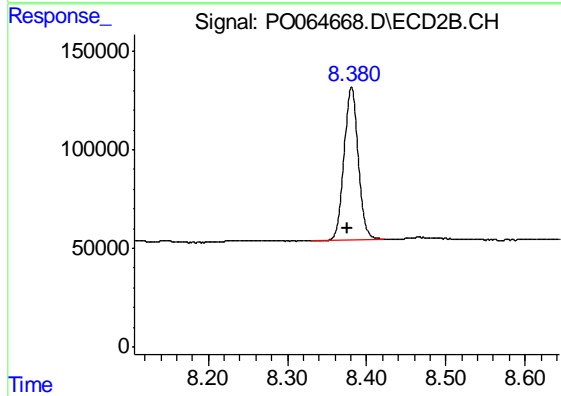
#1 Tetrachloro-m-xylene

R.T.: 3.456 min
 Delta R.T.: 0.000 min
 Response: 710500
 Conc: 28.03 ng/ml



#2 Decachlorobiphenyl

R.T.: 9.703 min
 Delta R.T.: 0.015 min
 Response: 780169
 Conc: 25.42 ng/ml



#2 Decachlorobiphenyl

R.T.: 8.381 min
 Delta R.T.: 0.005 min
 Response: 961431
 Conc: 27.68 ng/ml