

Data Path : Z:\pestpcbsrv\HPCHEM1\ECD_0\Data\PO121619\
 Data File : PO064691.D
 Signal(s) : Signal #1: ECD1A.CH Signal #2: ECD2B.CH
 Acq On : 16 Dec 2019 8:58
 Operator : SM/AJ
 Sample : K6144-09RE
 Misc :
 ALS Vial : 5 Sample Multiplier: 1

Instrument :
 ECD_O
 ClientSampled :
 15FRE

Integration File signal 1: autoint1.e
 Integration File signal 2: autoint2.e
 Quant Time: Dec 16 10:36:03 2019
 Quant Method : Z:\pestpcbsrv\HPCHEM1\ECD_0\methods\PO121319.M
 Quant Title : GC EXTRACTABLES
 QLast Update : Fri Dec 13 08:19:24 2019
 Response via : Initial Calibration
 Integrator: ChemStation 6890 Scale Mode: Small noise peaks clipped

Volume Inj. : 2 µl
 Signal #1 Phase : ZB-MR1 Signal #2 Phase: ZB-MR2
 Signal #1 Info : 30Mx0.32mmx 0.50µ Signal #2 Info : 30M x 0.32mm x 0.25µm

Compound	RT#1	RT#2	Resp#1	Resp#2	ng/ml	ng/ml
System Monitoring Compounds						
1) SA Tetrachlo...	4.180	3.455	389845	470753	16.013	18.571
2) SA Decachlor...	9.698	8.376	279315	349279	9.101	10.057
Target Compounds						
3) L1 AR-1016-1	5.269	4.454	72777	27474	72.935	25.404 #
6) L1 AR-1016-4	5.485	0.000	48470	0	66.918	N.D. #
7) L1 AR-1016-5	5.783	4.991	89209	455758	122.410	522.323 #
14) L3 AR-1232-4	5.485	0.000	48470	0	87.189	N.D. #
15) L3 AR-1232-5	5.603	4.991	27868	455758	67.154	718.083 #
16) L4 AR-1242-1	5.269	4.454	72777	27474	92.868	31.618 #
19) L4 AR-1242-4	5.485	0.000	48470	0	85.974	N.D. #
20) L4 AR-1242-5	6.205	5.335	565767	2147431	811.800	2415.694 #
21) L5 AR-1248-1	5.269	4.454	72777	27474	112.765	38.381 #
22) L5 AR-1248-2	5.603	0.000	27868	0	30.158	N.D. #
23) L5 AR-1248-3	5.783	0.000	89209	0	83.971	N.D. #
24) L5 AR-1248-4	6.205	4.991	565767	455758	433.838	354.123
25) L5 AR-1248-5	6.205	5.335	565767	2147431	454.671	1129.609 #
26) L6 AR-1254-1	6.179	5.335	1290106	2147431	1013.011	1057.470
27) L6 AR-1254-2	6.393	5.456	656337	666134	315.539	365.329
28) L6 AR-1254-3	6.759	5.856	887313	918434	371.604	295.656
29) L6 AR-1254-4	7.039	6.082	636329	492745	340.294	239.891 #
30) L6 AR-1254-5	7.453	6.497	1018839	1193370	484.233	399.804
31) L7 AR-1260-1	6.916	5.984	590862	844557	384.599	457.383
32) L7 AR-1260-2	7.173	6.171	1057915	1474941	535.925	633.945
33) L7 AR-1260-3	7.529	6.323	817436	671868	544.010	317.320 #
34) L7 AR-1260-4	7.752	6.791	831525	782195	450.149	415.200
35) L7 AR-1260-5	8.057	7.033	1257943	1843979	337.096	393.171
36) L8 AR-1262-1	7.529	6.587	817436	398799	355.493	347.613
37) L8 AR-1262-2	8.057	7.033	1257943	1843979	289.807	337.458
38) L8 AR-1262-3	8.345	7.316	1033914	1522667	355.298	731.064 #
39) L8 AR-1262-4	8.428	7.377	365227	2687673	168.748	675.113 #
40) L8 AR-1262-5	9.026	7.870	482929	579408	329.230	332.309
41) L9 AR-1268-1	8.345	7.316	1033914	1522667	200.058	238.121
42) L9 AR-1268-2	8.428	7.377	365227	2687673	77.668	461.129 #
43) L9 AR-1268-3	8.635	0.000	47709	0	12.376	N.D. #
44) L9 AR-1268-4	9.026	7.870	482929	579408	287.252	287.848
45) L9 AR-1268-5	9.398	8.142	126268	201431	10.640	13.924 #

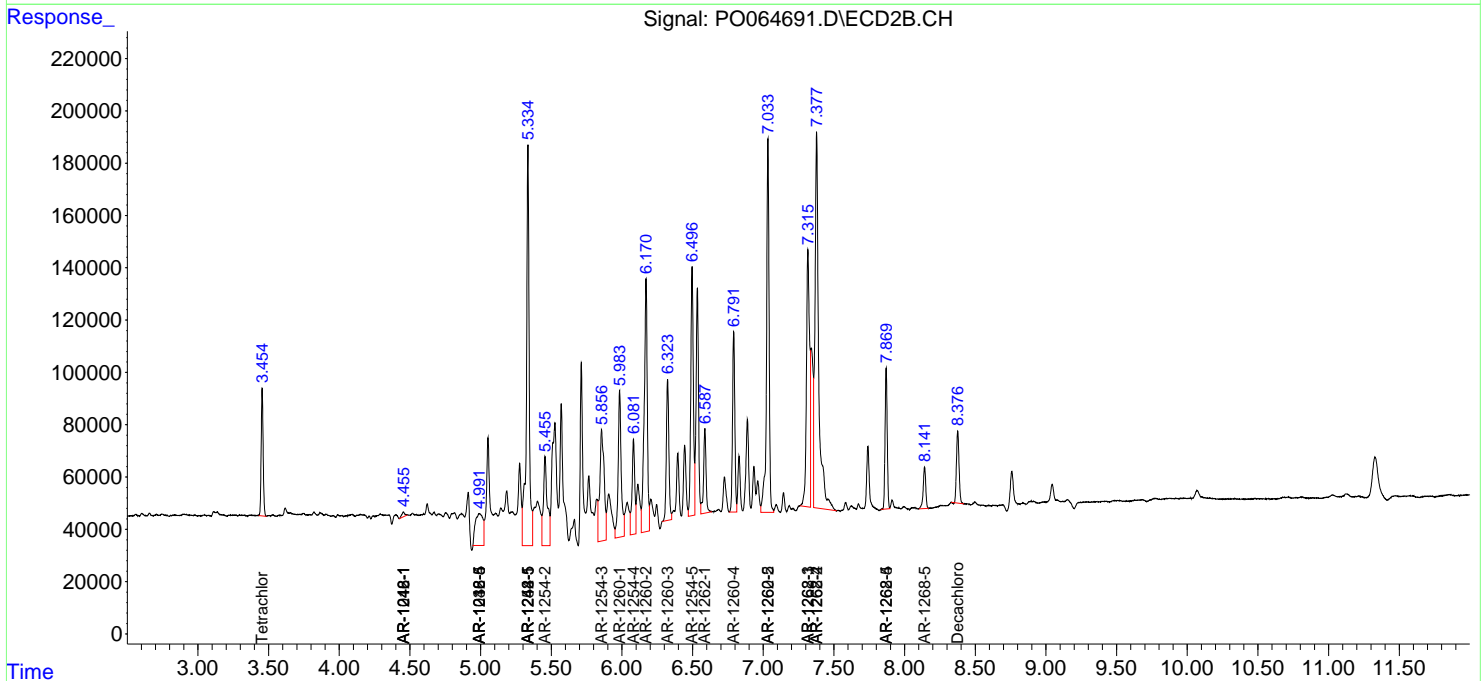
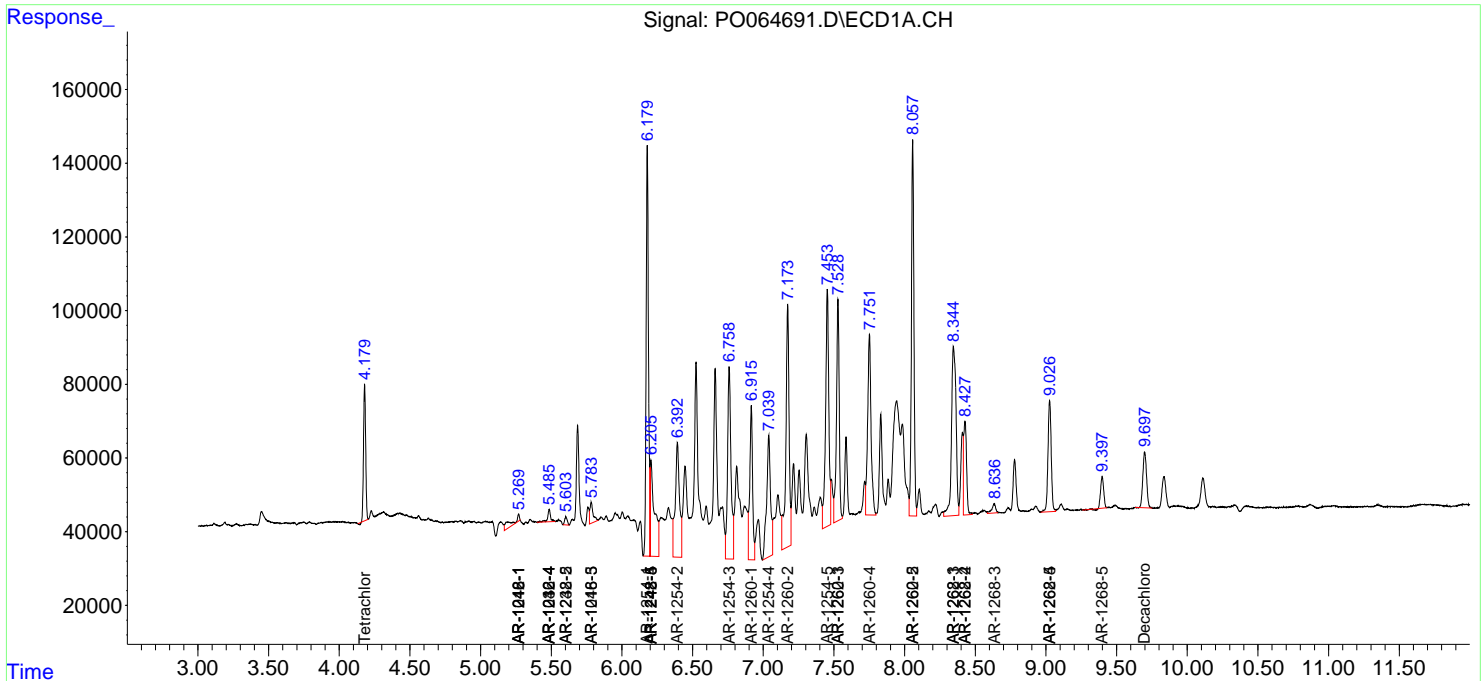
(f)=RT Delta > 1/2 Window (#)=Amounts differ by > 25% (m)=manual int.

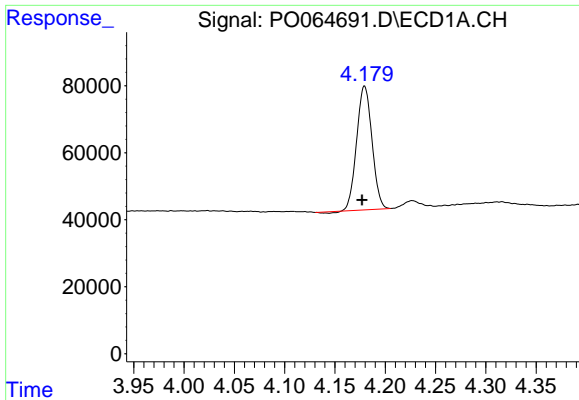
Data Path : Z:\pestpcbsrv\HPCHEM1\ECD_O\Data\PO121619\
 Data File : P0064691.D
 Signal(s) : Signal #1: ECD1A.CH Signal #2: ECD2B.CH
 Acq On : 16 Dec 2019 8:58
 Operator : SM/AJ
 Sample : K6144-09RE
 Misc :
 ALS Vial : 5 Sample Multiplier: 1

Instrument :
 ECD_O
 ClientSampled :
 15FRE

Integration File signal 1: autoint1.e
 Integration File signal 2: autoint2.e
 Quant Time: Dec 16 10:36:03 2019
 Quant Method : Z:\pestpcbsrv\HPCHEM1\ECD_O\methods\PO121319.M
 Quant Title : GC EXTRACTABLES
 QLast Update : Fri Dec 13 08:19:24 2019
 Response via : Initial Calibration
 Integrator: ChemStation 6890 Scale Mode: Small noise peaks clipped

Volume Inj. : 2 µl
 Signal #1 Phase : ZB-MR1 Signal #2 Phase: ZB-MR2
 Signal #1 Info : 30Mx0.32mmx 0.50µ Signal #2 Info : 30M x 0.32mm x 0.25µm

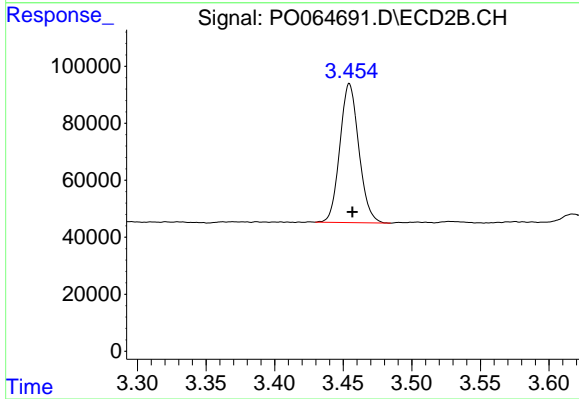




#1 Tetrachloro-m-xylene

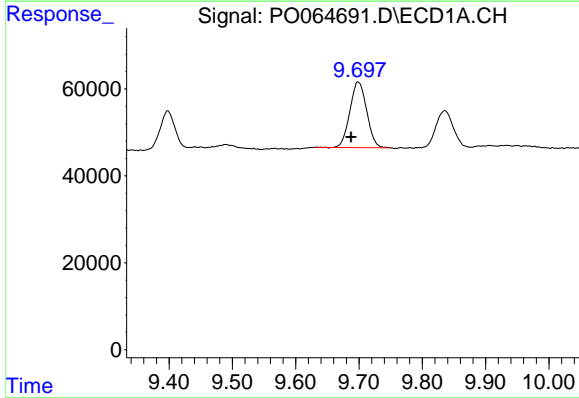
R.T.: 4.180 min
 Delta R.T.: 0.003 min
 Response: 389845
 Conc: 16.01 ng/ml

Instrument :
 ECD_O
 ClientSampleId :
 15FRE



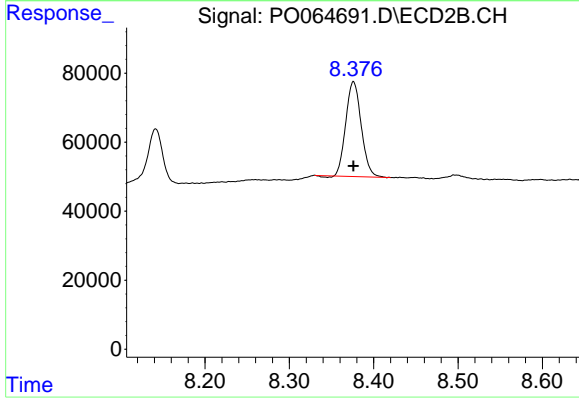
#1 Tetrachloro-m-xylene

R.T.: 3.455 min
 Delta R.T.: -0.002 min
 Response: 470753
 Conc: 18.57 ng/ml



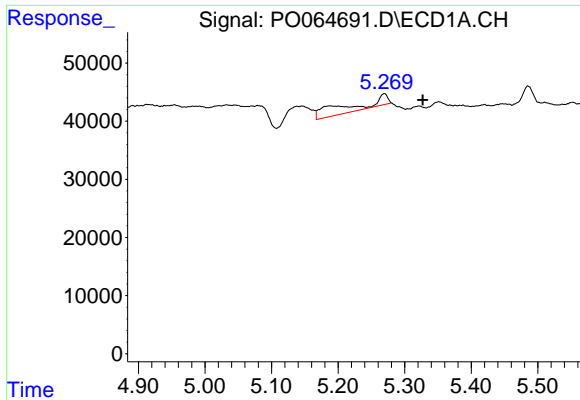
#2 Decachlorobiphenyl

R.T.: 9.698 min
 Delta R.T.: 0.011 min
 Response: 279315
 Conc: 9.10 ng/ml



#2 Decachlorobiphenyl

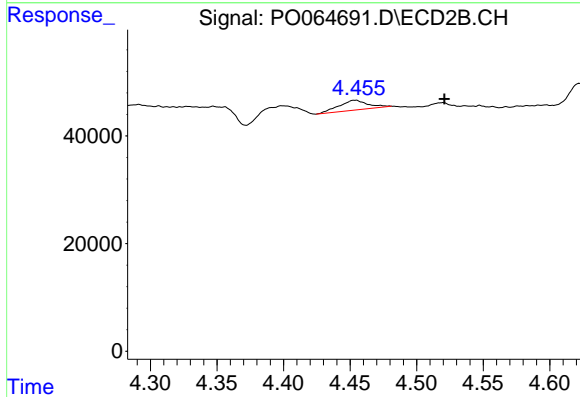
R.T.: 8.376 min
 Delta R.T.: 0.000 min
 Response: 349279
 Conc: 10.06 ng/ml



#3 AR-1016-1

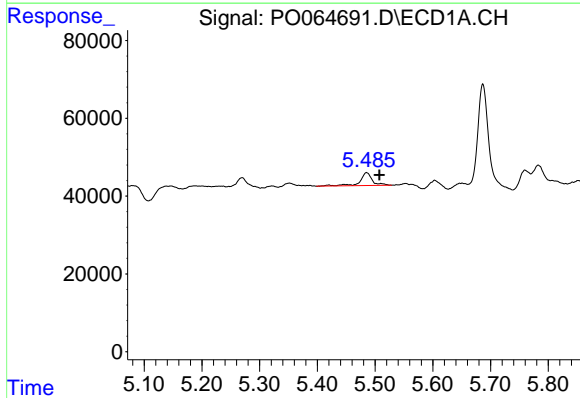
R.T.: 5.269 min
 Delta R.T.: -0.058 min
 Response: 72777
 Conc: 72.94 ng/ml

Instrument :
 ECD_O
 ClientSampleId :
 15FRE



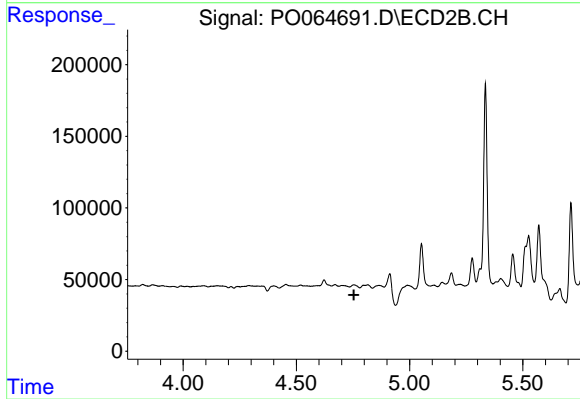
#3 AR-1016-1

R.T.: 4.454 min
 Delta R.T.: -0.067 min
 Response: 27474
 Conc: 25.40 ng/ml



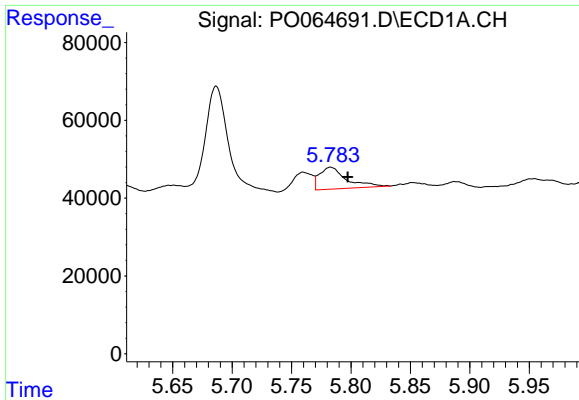
#6 AR-1016-4

R.T.: 5.485 min
 Delta R.T.: -0.022 min
 Response: 48470
 Conc: 66.92 ng/ml



#6 AR-1016-4

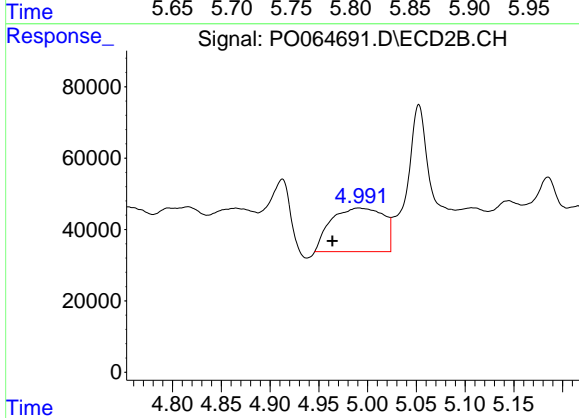
R.T.: 0.000 min
 Exp R.T. : 4.754 min
 Response: 0
 Conc: N.D.



#7 AR-1016-5

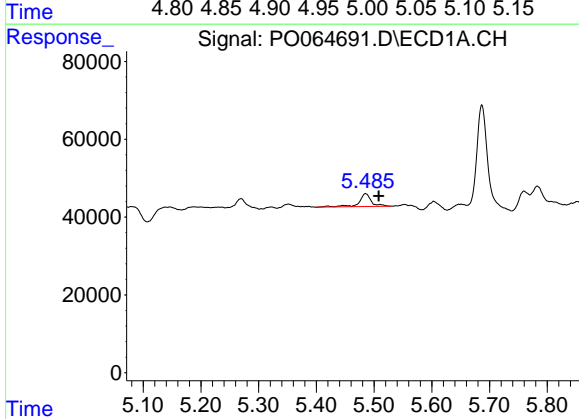
R.T.: 5.783 min
 Delta R.T.: -0.014 min
 Response: 89209
 Conc: 122.41 ng/ml

Instrument :
 ECD_O
 ClientSampleId :
 15FRE



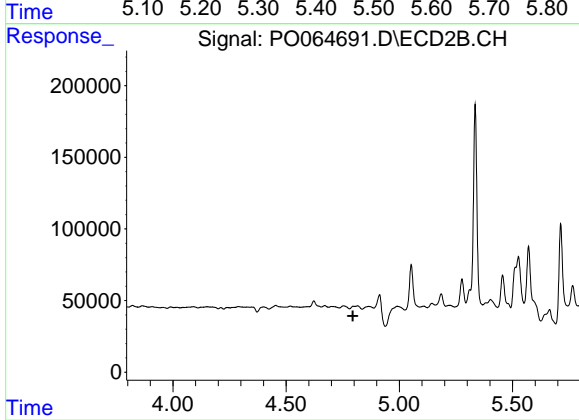
#7 AR-1016-5

R.T.: 4.991 min
 Delta R.T.: 0.027 min
 Response: 455758
 Conc: 522.32 ng/ml



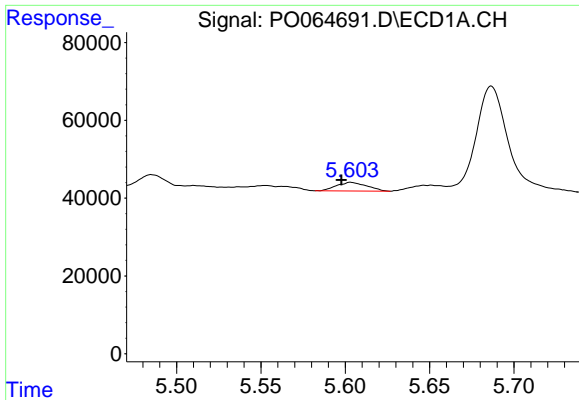
#14 AR-1232-4

R.T.: 5.485 min
 Delta R.T.: -0.023 min
 Response: 48470
 Conc: 87.19 ng/ml



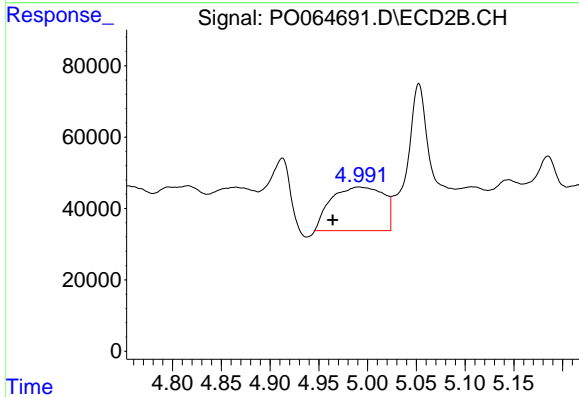
#14 AR-1232-4

R.T.: 0.000 min
 Exp R.T. : 4.795 min
 Response: 0
 Conc: N.D.

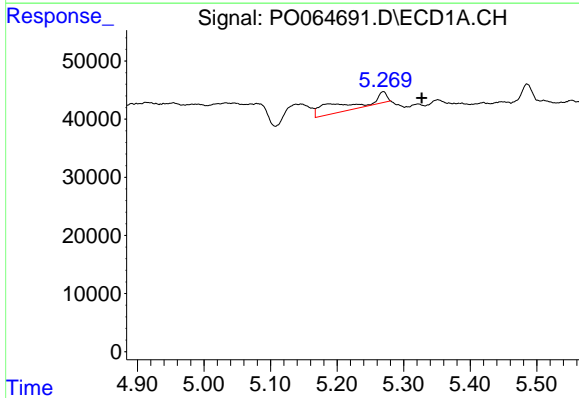


#15 AR-1232-5
 R.T.: 5.603 min
 Delta R.T.: 0.006 min
 Response: 27868
 Conc: 67.15 ng/ml

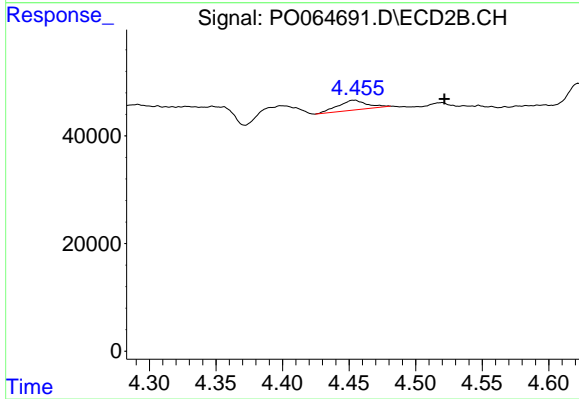
Instrument :
 ECD_O
 ClientSampled :
 15FRE



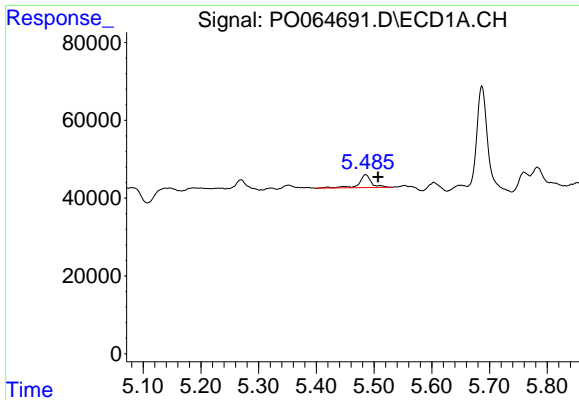
#15 AR-1232-5
 R.T.: 4.991 min
 Delta R.T.: 0.026 min
 Response: 455758
 Conc: 718.08 ng/ml



#16 AR-1242-1
 R.T.: 5.269 min
 Delta R.T.: -0.058 min
 Response: 72777
 Conc: 92.87 ng/ml

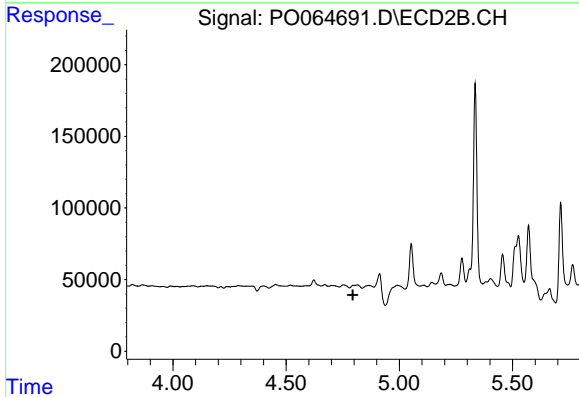


#16 AR-1242-1
 R.T.: 4.454 min
 Delta R.T.: -0.068 min
 Response: 27474
 Conc: 31.62 ng/ml

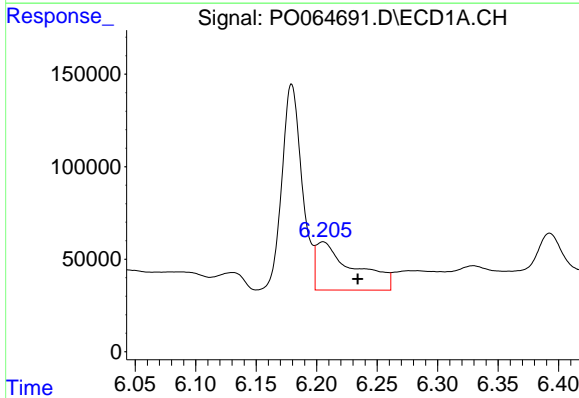


#19 AR-1242-4
 R.T.: 5.485 min
 Delta R.T.: -0.022 min
 Response: 48470
 Conc: 85.97 ng/ml

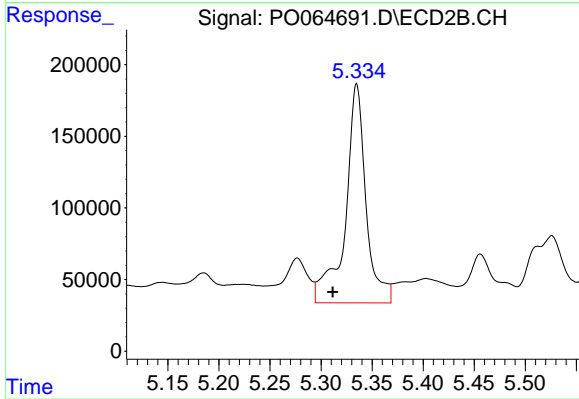
Instrument :
 ECD_O
 ClientSampleId :
 15FRE



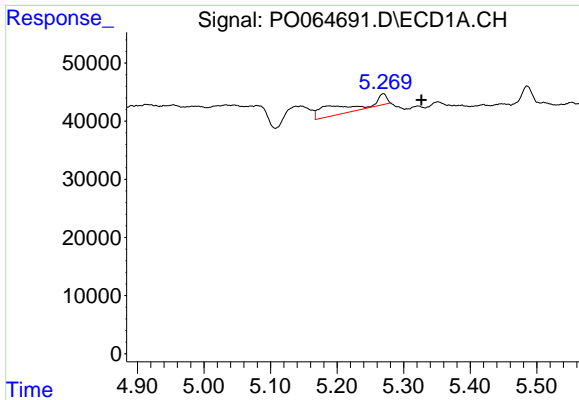
#19 AR-1242-4
 R.T.: 0.000 min
 Exp R.T. : 4.795 min
 Response: 0
 Conc: N.D.



#20 AR-1242-5
 R.T.: 6.205 min
 Delta R.T.: -0.029 min
 Response: 565767
 Conc: 811.80 ng/ml



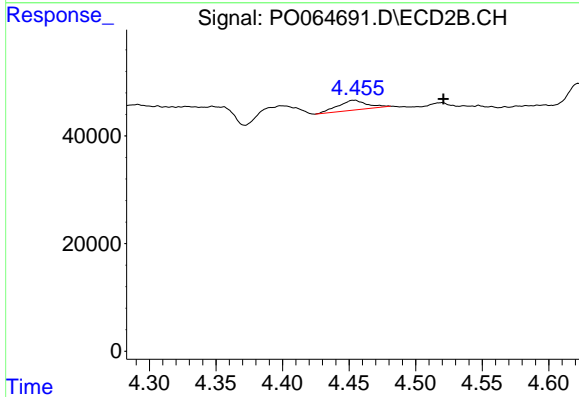
#20 AR-1242-5
 R.T.: 5.335 min
 Delta R.T.: 0.023 min
 Response: 2147431
 Conc: 2415.69 ng/ml



#21 AR-1248-1

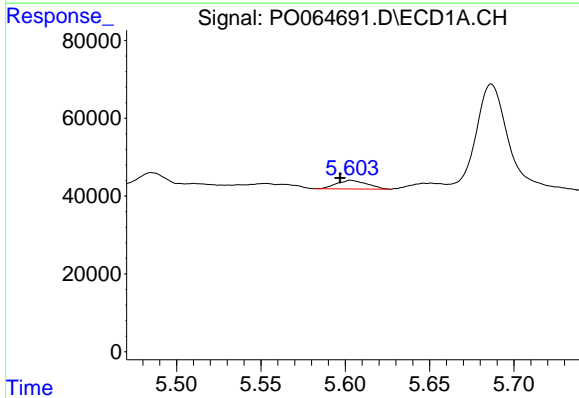
R.T.: 5.269 min
 Delta R.T.: -0.057 min
 Response: 72777
 Conc: 112.76 ng/ml

Instrument :
 ECD_O
 ClientSampleId :
 15FRE



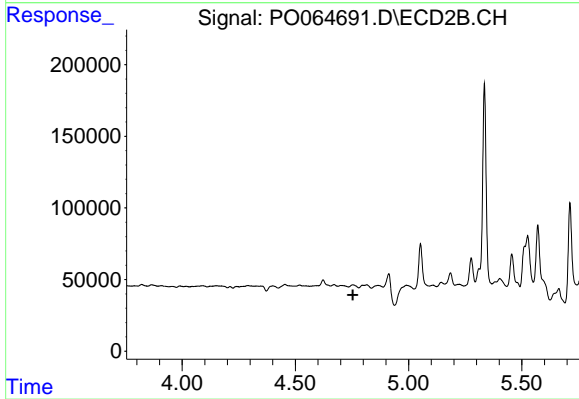
#21 AR-1248-1

R.T.: 4.454 min
 Delta R.T.: -0.067 min
 Response: 27474
 Conc: 38.38 ng/ml



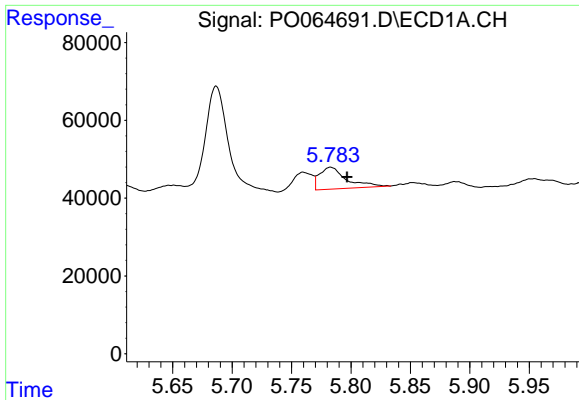
#22 AR-1248-2

R.T.: 5.603 min
 Delta R.T.: 0.007 min
 Response: 27868
 Conc: 30.16 ng/ml



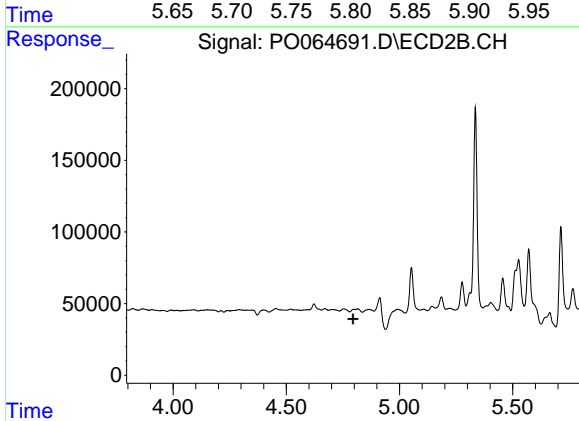
#22 AR-1248-2

R.T.: 0.000 min
 Exp R.T. : 4.754 min
 Response: 0
 Conc: N.D.

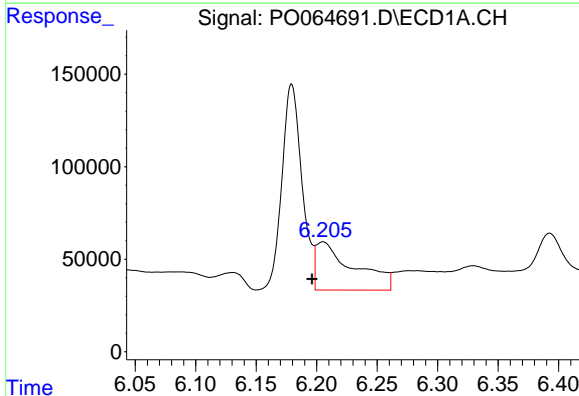


#23 AR-1248-3
 R.T.: 5.783 min
 Delta R.T.: -0.014 min
 Response: 89209
 Conc: 83.97 ng/ml

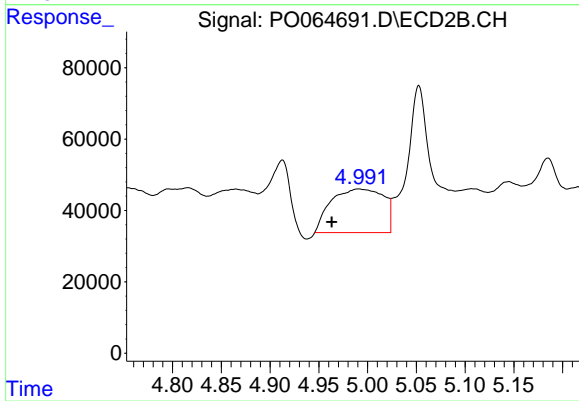
Instrument :
 ECD_O
 ClientSampled :
 15FRE



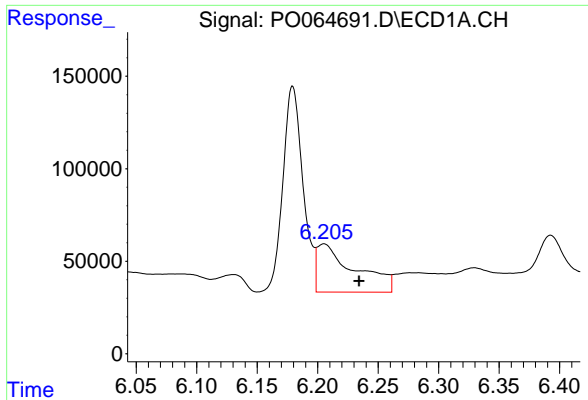
#23 AR-1248-3
 R.T.: 0.000 min
 Exp R.T. : 4.795 min
 Response: 0
 Conc: N.D.



#24 AR-1248-4
 R.T.: 6.205 min
 Delta R.T.: 0.009 min
 Response: 565767
 Conc: 433.84 ng/ml



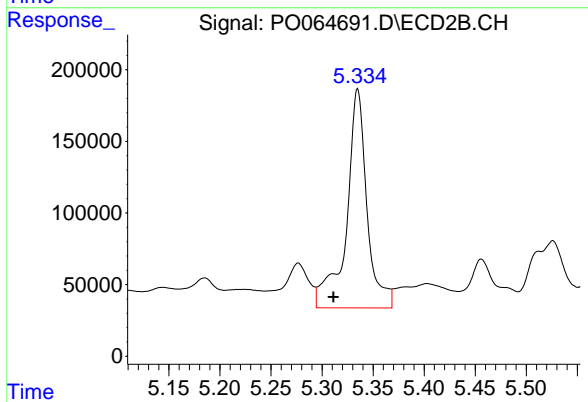
#24 AR-1248-4
 R.T.: 4.991 min
 Delta R.T.: 0.028 min
 Response: 455758
 Conc: 354.12 ng/ml



#25 AR-1248-5

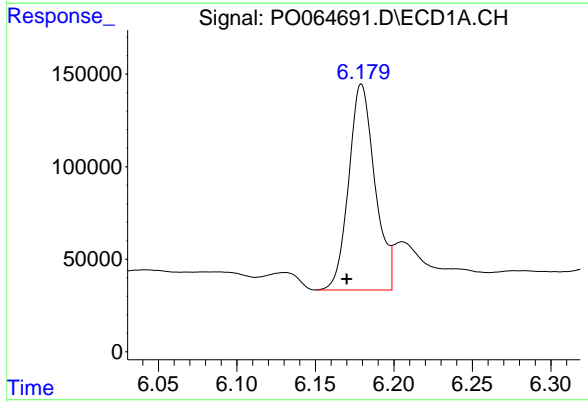
R.T.: 6.205 min
 Delta R.T.: -0.029 min
 Response: 565767
 Conc: 454.67 ng/ml

Instrument :
 ECD_O
 ClientSampleId :
 15FRE



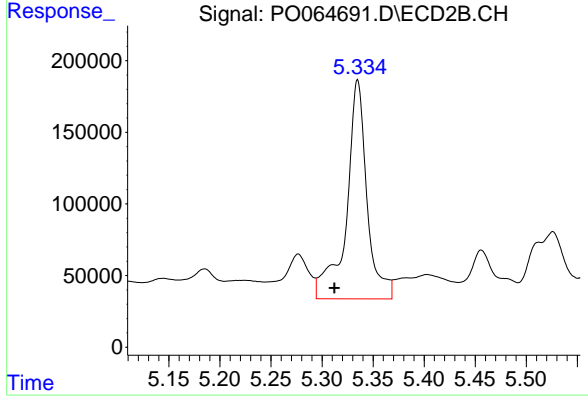
#25 AR-1248-5

R.T.: 5.335 min
 Delta R.T.: 0.024 min
 Response: 2147431
 Conc: 1129.61 ng/ml



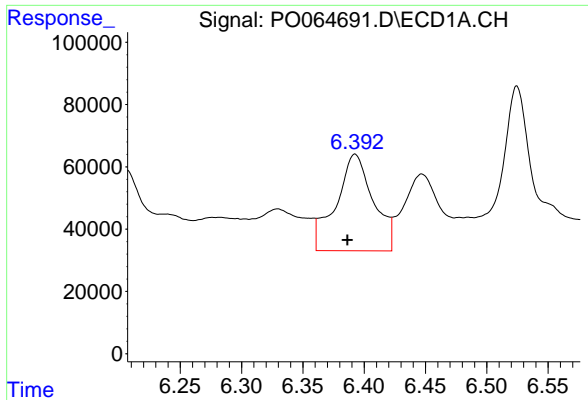
#26 AR-1254-1

R.T.: 6.179 min
 Delta R.T.: 0.009 min
 Response: 1290106
 Conc: 1013.01 ng/ml



#26 AR-1254-1

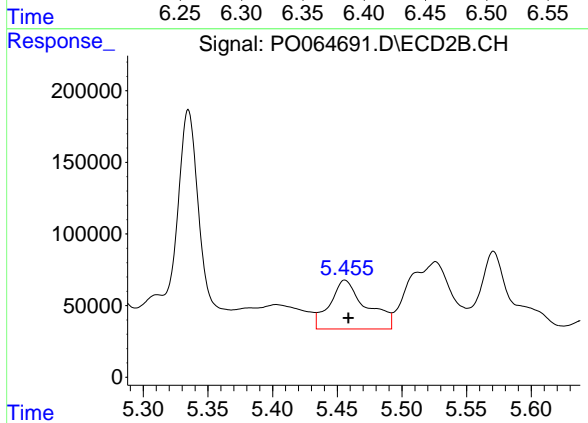
R.T.: 5.335 min
 Delta R.T.: 0.023 min
 Response: 2147431
 Conc: 1057.47 ng/ml



#27 AR-1254-2

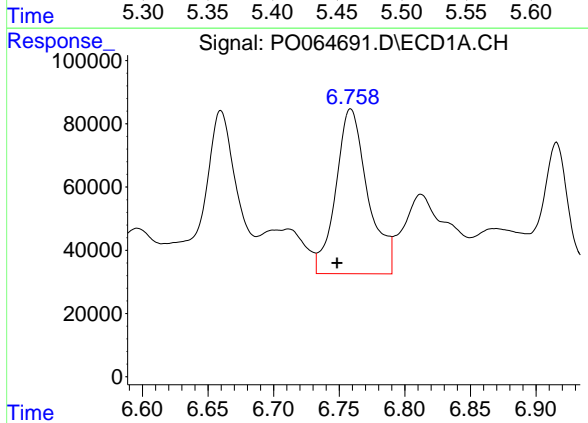
R.T.: 6.393 min
 Delta R.T.: 0.006 min
 Response: 656337
 Conc: 315.54 ng/ml

Instrument :
 ECD_O
 ClientSampled :
 15FRE



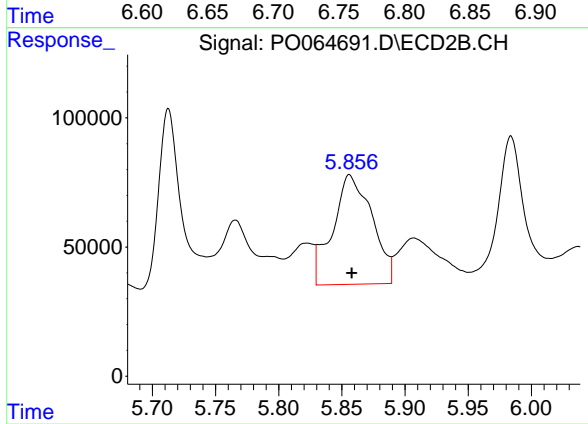
#27 AR-1254-2

R.T.: 5.456 min
 Delta R.T.: -0.003 min
 Response: 666134
 Conc: 365.33 ng/ml



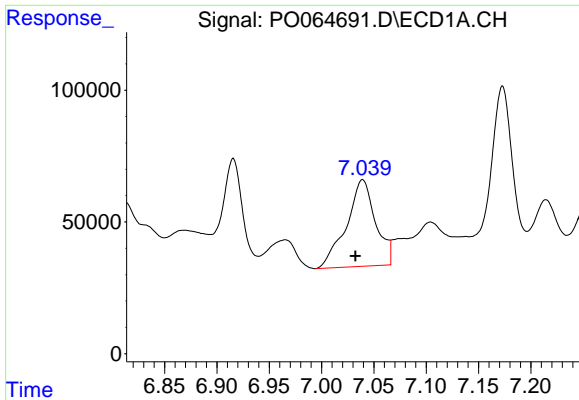
#28 AR-1254-3

R.T.: 6.759 min
 Delta R.T.: 0.010 min
 Response: 887313
 Conc: 371.60 ng/ml



#28 AR-1254-3

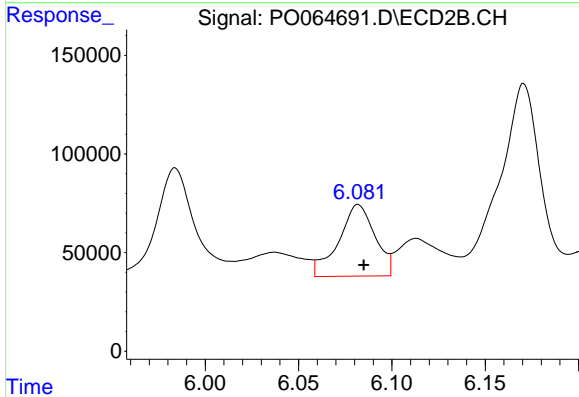
R.T.: 5.856 min
 Delta R.T.: -0.002 min
 Response: 918434
 Conc: 295.66 ng/ml



#29 AR-1254-4

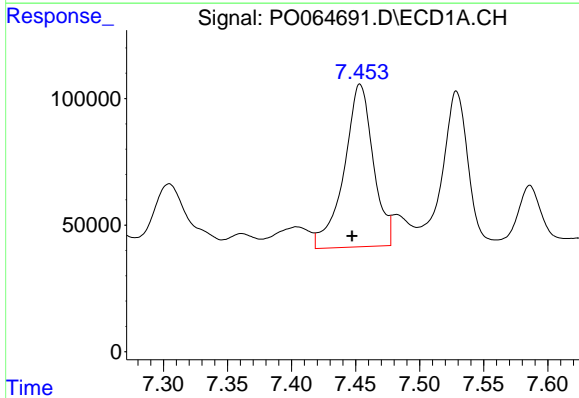
R.T.: 7.039 min
 Delta R.T.: 0.007 min
 Response: 636329
 Conc: 340.29 ng/ml

Instrument :
 ECD_O
 ClientSampleId :
 15FRE



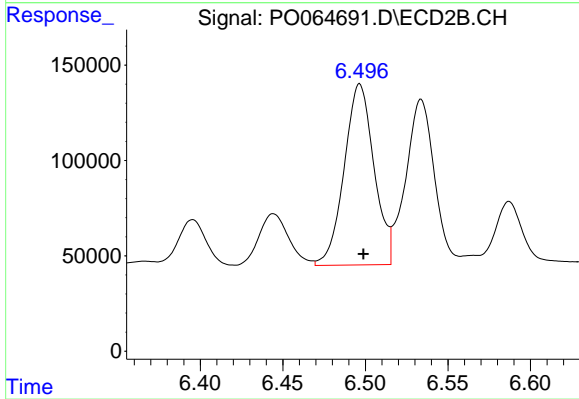
#29 AR-1254-4

R.T.: 6.082 min
 Delta R.T.: -0.003 min
 Response: 492745
 Conc: 239.89 ng/ml



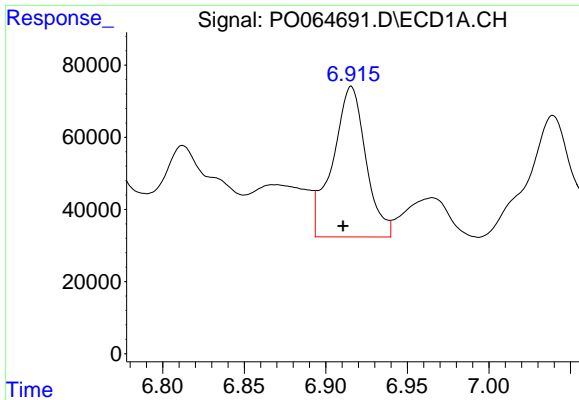
#30 AR-1254-5

R.T.: 7.453 min
 Delta R.T.: 0.006 min
 Response: 1018839
 Conc: 484.23 ng/ml



#30 AR-1254-5

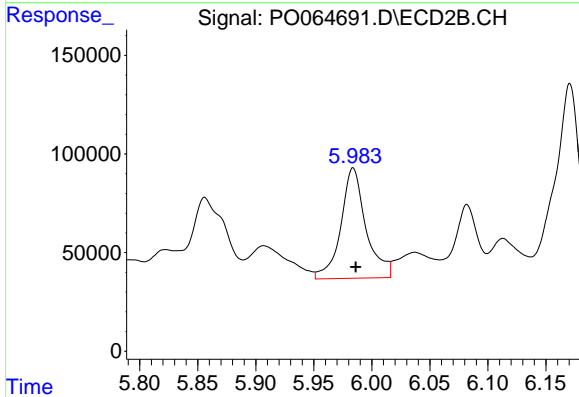
R.T.: 6.497 min
 Delta R.T.: -0.002 min
 Response: 1193370
 Conc: 399.80 ng/ml



#31 AR-1260-1

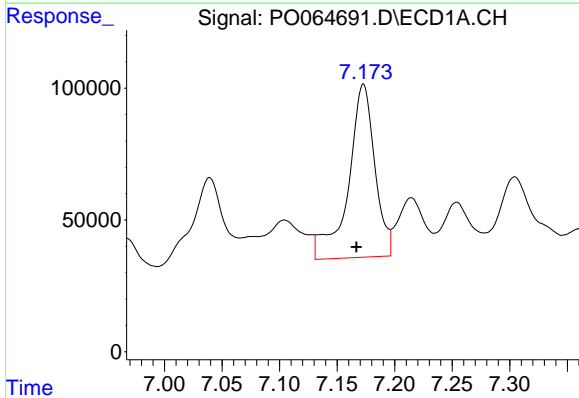
R.T.: 6.916 min
 Delta R.T.: 0.005 min
 Response: 590862
 Conc: 384.60 ng/ml

Instrument :
 ECD_O
 ClientSampled :
 15FRE



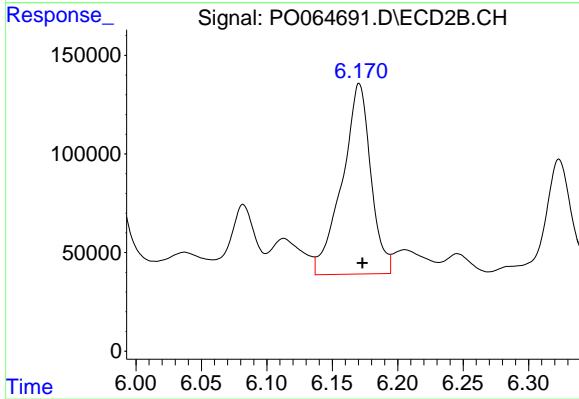
#31 AR-1260-1

R.T.: 5.984 min
 Delta R.T.: -0.002 min
 Response: 844557
 Conc: 457.38 ng/ml



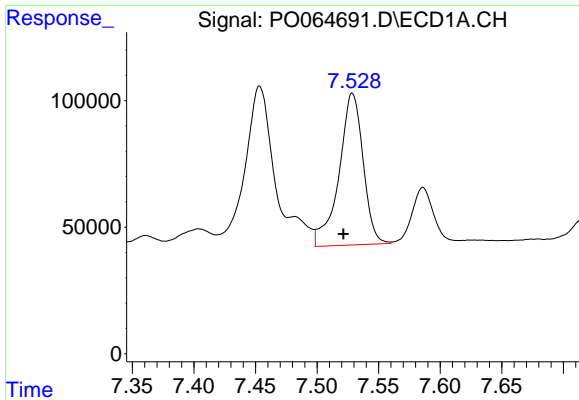
#32 AR-1260-2

R.T.: 7.173 min
 Delta R.T.: 0.006 min
 Response: 1057915
 Conc: 535.93 ng/ml



#32 AR-1260-2

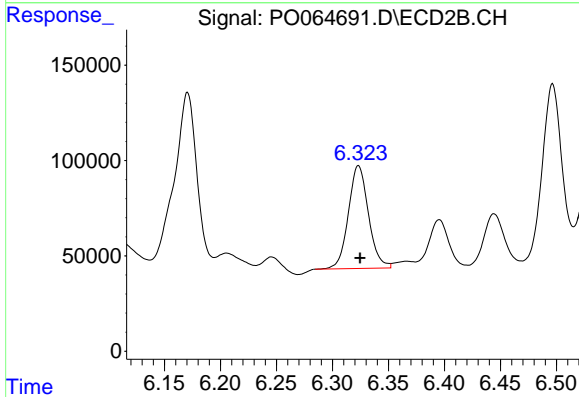
R.T.: 6.171 min
 Delta R.T.: -0.002 min
 Response: 1474941
 Conc: 633.95 ng/ml



#33 AR-1260-3

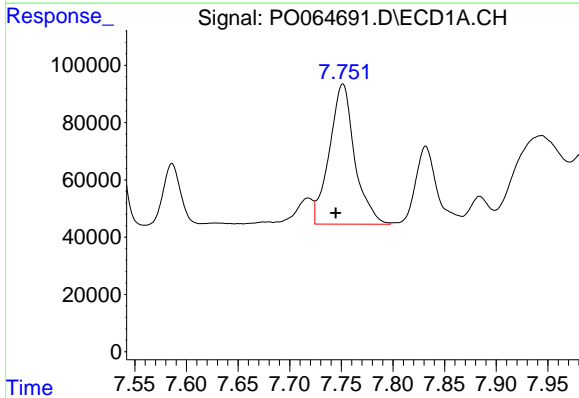
R.T.: 7.529 min
 Delta R.T.: 0.007 min
 Response: 817436
 Conc: 544.01 ng/ml

Instrument :
 ECD_O
 ClientSampled :
 15FRE



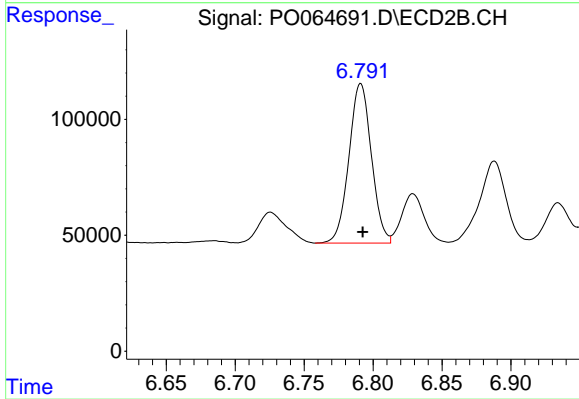
#33 AR-1260-3

R.T.: 6.323 min
 Delta R.T.: -0.001 min
 Response: 671868
 Conc: 317.32 ng/ml



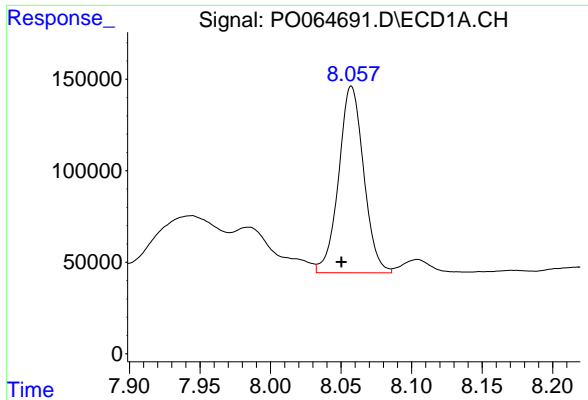
#34 AR-1260-4

R.T.: 7.752 min
 Delta R.T.: 0.007 min
 Response: 831525
 Conc: 450.15 ng/ml



#34 AR-1260-4

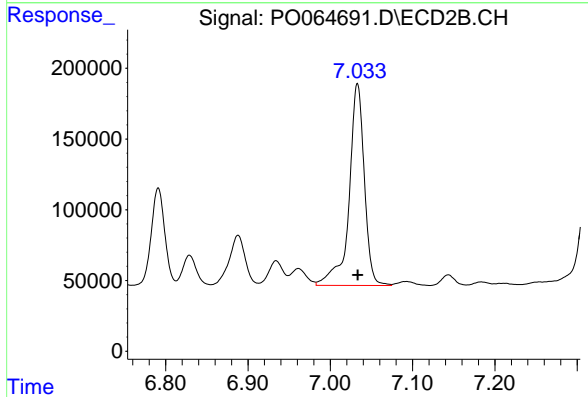
R.T.: 6.791 min
 Delta R.T.: -0.002 min
 Response: 782195
 Conc: 415.20 ng/ml



#35 AR-1260-5

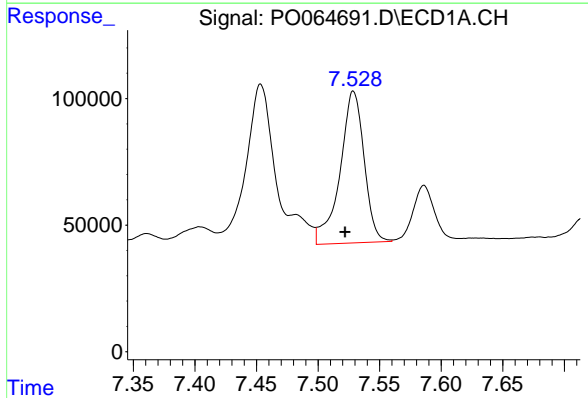
R.T.: 8.057 min
 Delta R.T.: 0.007 min
 Response: 1257943
 Conc: 337.10 ng/ml

Instrument :
 ECD_O
 ClientSampled :
 15FRE



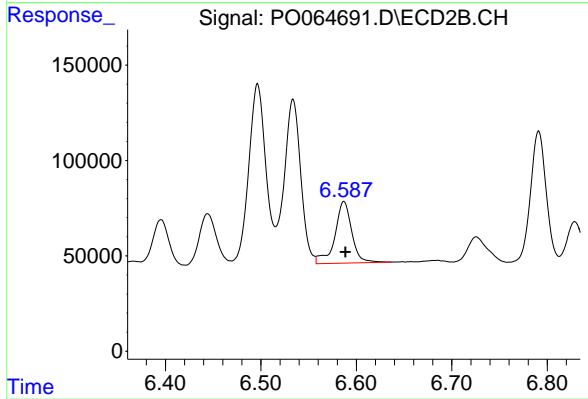
#35 AR-1260-5

R.T.: 7.033 min
 Delta R.T.: 0.000 min
 Response: 1843979
 Conc: 393.17 ng/ml



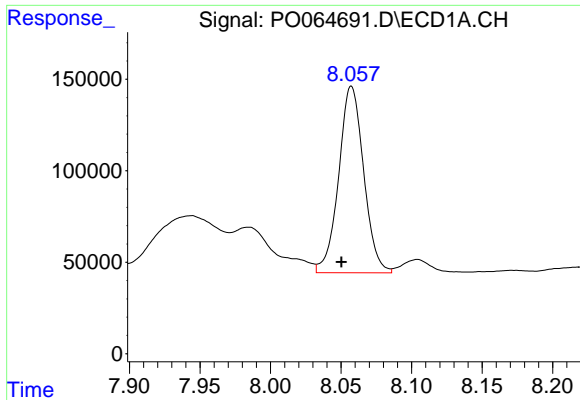
#36 AR-1262-1

R.T.: 7.529 min
 Delta R.T.: 0.007 min
 Response: 817436
 Conc: 355.49 ng/ml



#36 AR-1262-1

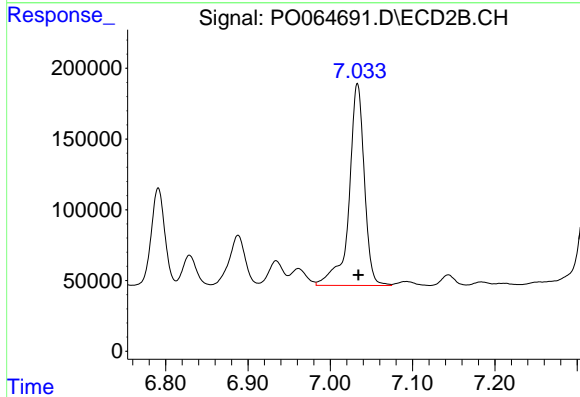
R.T.: 6.587 min
 Delta R.T.: -0.001 min
 Response: 398799
 Conc: 347.61 ng/ml



#37 AR-1262-2

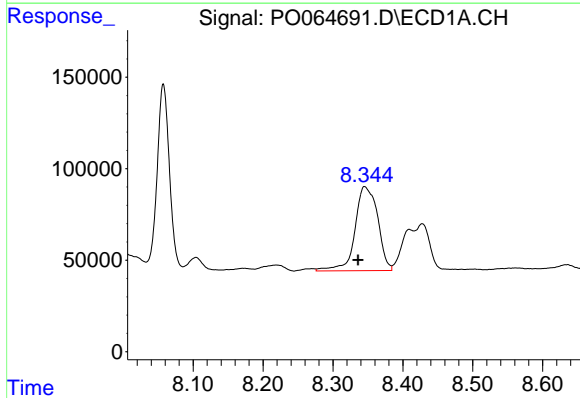
R.T.: 8.057 min
 Delta R.T.: 0.007 min
 Response: 1257943
 Conc: 289.81 ng/ml

Instrument :
 ECD_O
 ClientSampled :
 15FRE



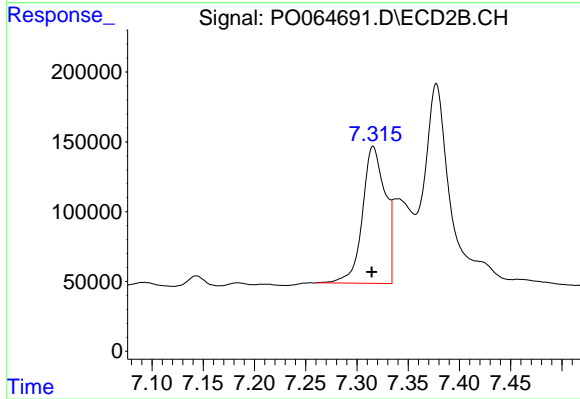
#37 AR-1262-2

R.T.: 7.033 min
 Delta R.T.: 0.000 min
 Response: 1843979
 Conc: 337.46 ng/ml



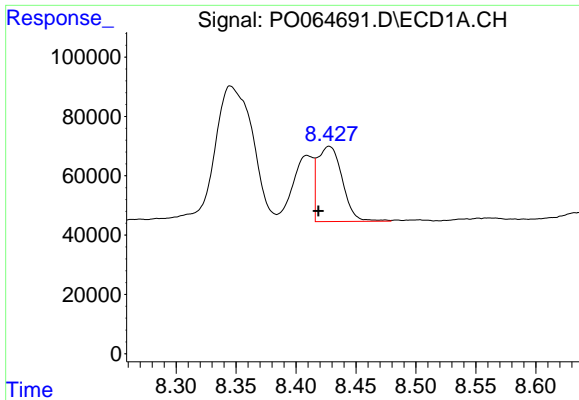
#38 AR-1262-3

R.T.: 8.345 min
 Delta R.T.: 0.009 min
 Response: 1033914
 Conc: 355.30 ng/ml



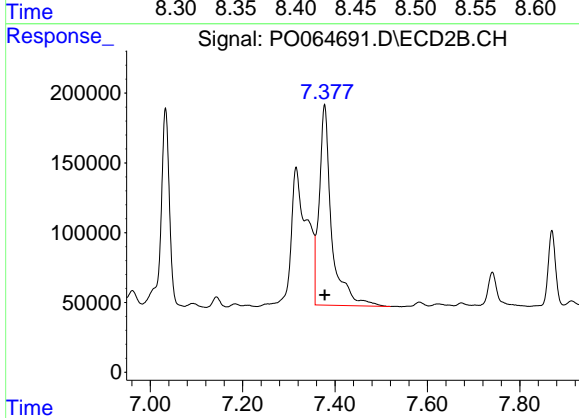
#38 AR-1262-3

R.T.: 7.316 min
 Delta R.T.: 0.001 min
 Response: 1522667
 Conc: 731.06 ng/ml

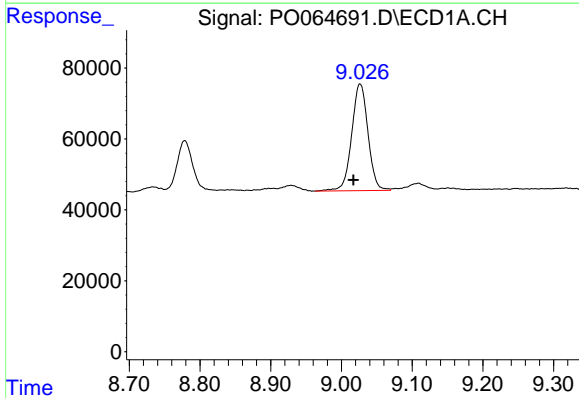


#39 AR-1262-4
 R.T.: 8.428 min
 Delta R.T.: 0.009 min
 Response: 365227
 Conc: 168.75 ng/ml

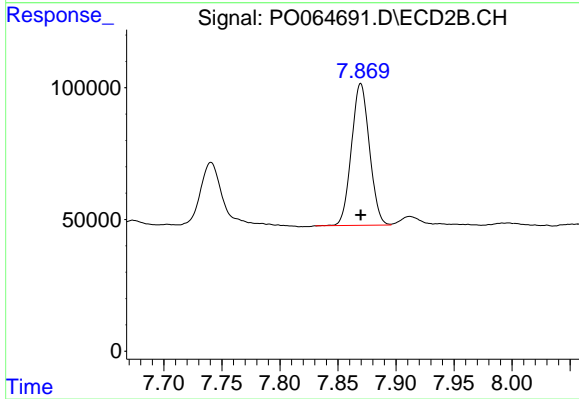
Instrument :
 ECD_O
 ClientSampleId :
 15FRE



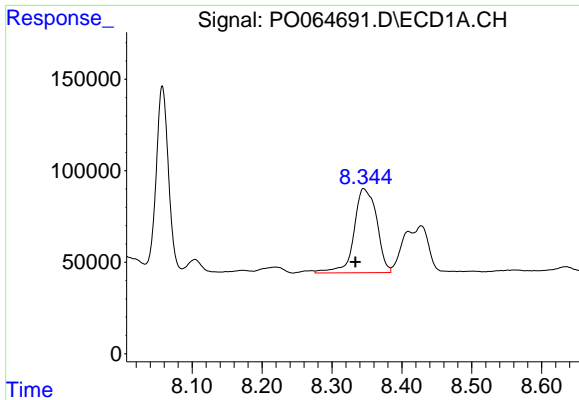
#39 AR-1262-4
 R.T.: 7.377 min
 Delta R.T.: 0.000 min
 Response: 2687673
 Conc: 675.11 ng/ml



#40 AR-1262-5
 R.T.: 9.026 min
 Delta R.T.: 0.009 min
 Response: 482929
 Conc: 329.23 ng/ml



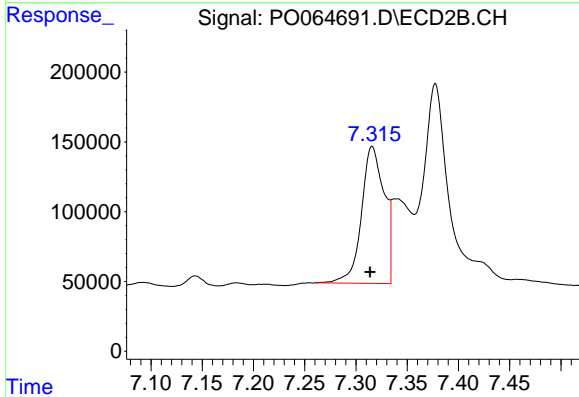
#40 AR-1262-5
 R.T.: 7.870 min
 Delta R.T.: 0.000 min
 Response: 579408
 Conc: 332.31 ng/ml



#41 AR-1268-1

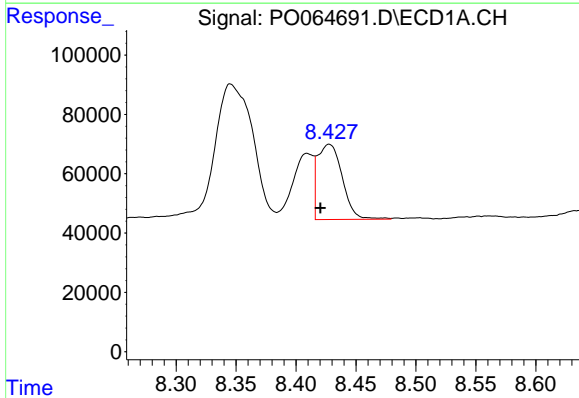
R.T.: 8.345 min
 Delta R.T.: 0.012 min
 Response: 1033914
 Conc: 200.06 ng/ml

Instrument :
 ECD_O
 ClientSampleId :
 15FRE



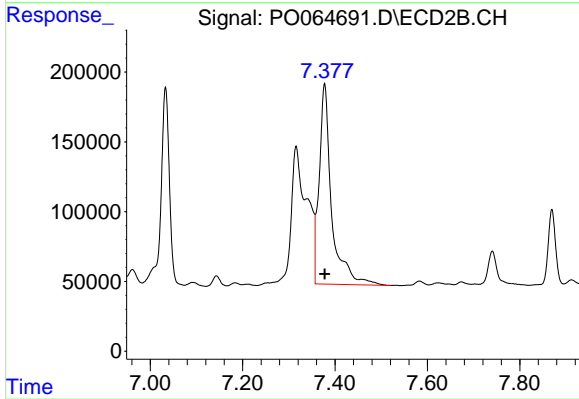
#41 AR-1268-1

R.T.: 7.316 min
 Delta R.T.: 0.002 min
 Response: 1522667
 Conc: 238.12 ng/ml



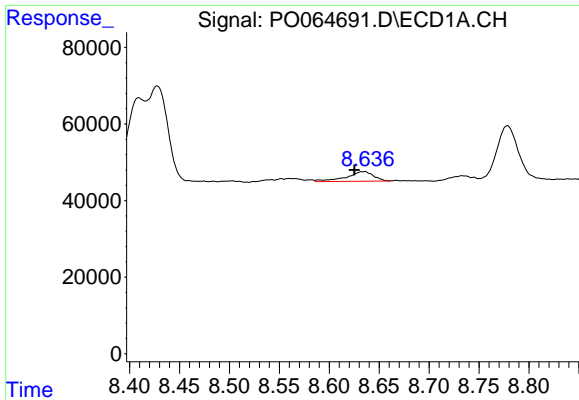
#42 AR-1268-2

R.T.: 8.428 min
 Delta R.T.: 0.008 min
 Response: 365227
 Conc: 77.67 ng/ml



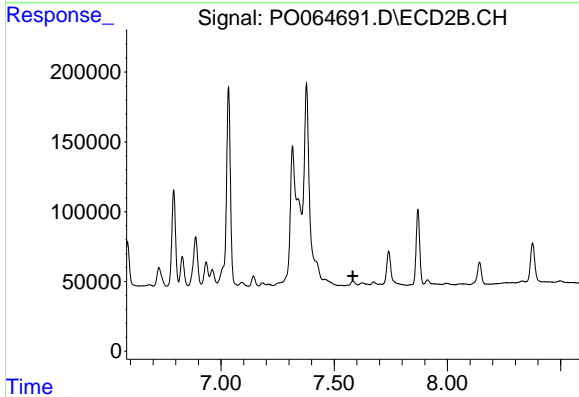
#42 AR-1268-2

R.T.: 7.377 min
 Delta R.T.: 0.000 min
 Response: 2687673
 Conc: 461.13 ng/ml

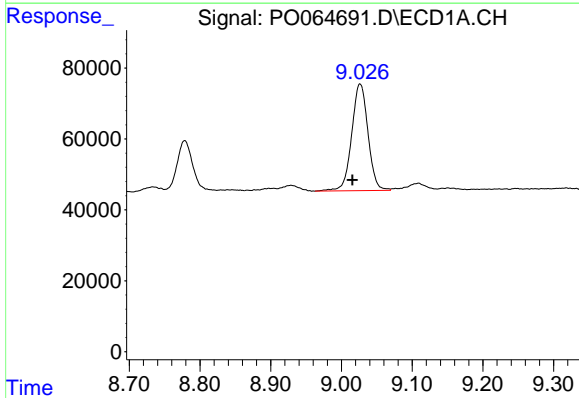


#43 AR-1268-3
 R.T.: 8.635 min
 Delta R.T.: 0.010 min
 Response: 47709
 Conc: 12.38 ng/ml

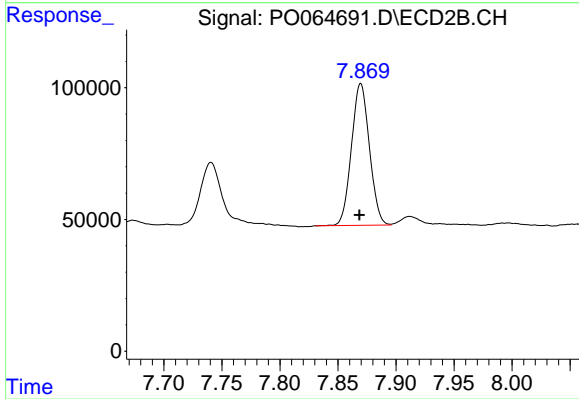
Instrument :
 ECD_O
 ClientSampled :
 15FRE



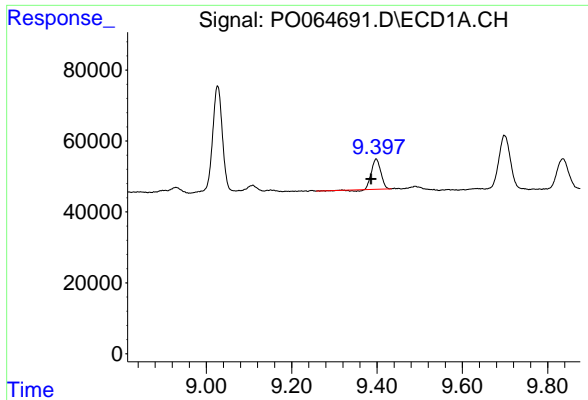
#43 AR-1268-3
 R.T.: 0.000 min
 Exp R.T. : 7.582 min
 Response: 0
 Conc: N.D.



#44 AR-1268-4
 R.T.: 9.026 min
 Delta R.T.: 0.011 min
 Response: 482929
 Conc: 287.25 ng/ml



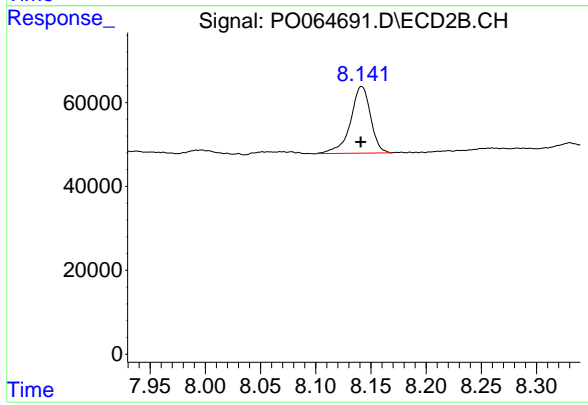
#44 AR-1268-4
 R.T.: 7.870 min
 Delta R.T.: 0.001 min
 Response: 579408
 Conc: 287.85 ng/ml



#45 AR-1268-5

R.T.: 9.398 min
Delta R.T.: 0.012 min
Response: 126268
Conc: 10.64 ng/ml

Instrument :
ECD_O
ClientSampled :
15FRE



#45 AR-1268-5

R.T.: 8.142 min
Delta R.T.: 0.000 min
Response: 201431
Conc: 13.92 ng/ml