

Data Path : Z:\pestpcbsrv\HPCHEM1\ECD\_0\Data\PO121619\  
 Data File : PO064693.D  
 Signal(s) : Signal #1: ECD1A.CH Signal #2: ECD2B.CH  
 Acq On : 16 Dec 2019 9:31  
 Operator : SM/AJ  
 Sample : K6142-16DL 10X  
 Misc :  
 ALS Vial : 7 Sample Multiplier: 1

Instrument :  
 ECD\_O  
 ClientSampleId :  
 5FDL

Integration File signal 1: autoint1.e  
 Integration File signal 2: autoint2.e  
 Quant Time: Dec 16 10:36:46 2019  
 Quant Method : Z:\pestpcbsrv\HPCHEM1\ECD\_0\methods\PO121319.M  
 Quant Title : GC EXTRACTABLES  
 QLast Update : Fri Dec 13 08:19:24 2019  
 Response via : Initial Calibration  
 Integrator: ChemStation 6890 Scale Mode: Small noise peaks clipped

Volume Inj. : 2 µl  
 Signal #1 Phase : ZB-MR2 Signal #2 Phase: ZB-MR2  
 Signal #1 Info : 30Mx0.32mmx 0.50µ Signal #2 Info : 30M x 0.32mm x 0.25µm

Compound	RT#1	RT#2	Resp#1	Resp#2	ng/ml	ng/ml
System Monitoring Compounds						
1) SA Tetrachlo...	4.178	3.454	50269	62221	2.065	2.455
2) SA Decachlor...	9.696	8.375	49696	68870	1.619	1.983
Target Compounds						
5) L1 AR-1016-3	0.000	4.752	0	164211	N.D.	211.240 #
6) L1 AR-1016-4	0.000	4.752	0	164211	N.D.	249.754 #
7) L1 AR-1016-5	5.801	4.962	61199	105244	83.976	120.615 #
13) L3 AR-1232-3	0.000	4.752	0	164211	N.D.	263.836 #
14) L3 AR-1232-4	0.000	4.792	0	41014	N.D.	71.993 #
15) L3 AR-1232-5	5.601	4.962	128780	105244	310.322	165.820 #
18) L4 AR-1242-3	0.000	4.752	0	164211	N.D.	258.953 #
19) L4 AR-1242-4	0.000	4.792	0	41014	N.D.	63.012 #
20) L4 AR-1242-5	6.241	5.310	107102	499748	153.676	562.178 #
22) L5 AR-1248-2	5.601	4.752	128780	164211	139.360	167.238
23) L5 AR-1248-3	5.801	4.792	61199	41014	57.606	40.308 #
24) L5 AR-1248-4	6.201	4.962	166343	105244	127.554	81.774 #
25) L5 AR-1248-5	6.241	5.310	107102	499748	86.071	262.882 #
26) L6 AR-1254-1	6.175	5.310	400253	499748	314.284	246.093
27) L6 AR-1254-2	6.391	5.456	514526	531642	247.362	291.569
28) L6 AR-1254-3	6.754	5.856	634307	1153748	265.646	371.407 #
29) L6 AR-1254-4	7.038	6.083	555871	496433	297.267	241.687
30) L6 AR-1254-5	7.452	6.496	1252152	1445659	595.123	484.327
31) L7 AR-1260-1	6.915	5.984	728610	922391	474.261	499.535
32) L7 AR-1260-2	7.172	6.172	1045520	1198872	529.646	515.288
33) L7 AR-1260-3	7.527	6.323	1020980	1007265	679.471	475.727 #
34) L7 AR-1260-4	7.750	6.790	1158027	1133318	626.901	601.581
35) L7 AR-1260-5	8.056	7.032	1983212	2895690	531.449	617.415
36) L8 AR-1262-1	7.527	6.586	1020980	599890	444.012	522.894
37) L8 AR-1262-2	8.056	7.032	1983212	2895690	456.895	529.927
38) L8 AR-1262-3	8.345	7.313	1331706	957017	457.633	459.483
39) L8 AR-1262-4	8.425	7.376	484681	1955913	223.940	491.303 #
40) L8 AR-1262-5	9.026	7.869	727293	924062	495.822	529.980
41) L9 AR-1268-1	8.345	7.313	1331706	957017	257.679	149.662 #
42) L9 AR-1268-2	8.425	7.376	484681	1955913	103.070	335.580 #
43) L9 AR-1268-3	8.633	7.582	54352	45851	14.099	9.599 #
44) L9 AR-1268-4	9.026	7.869	727293	924062	432.603	459.071
45) L9 AR-1268-5	9.397	8.140	201356	258412	16.968	17.863

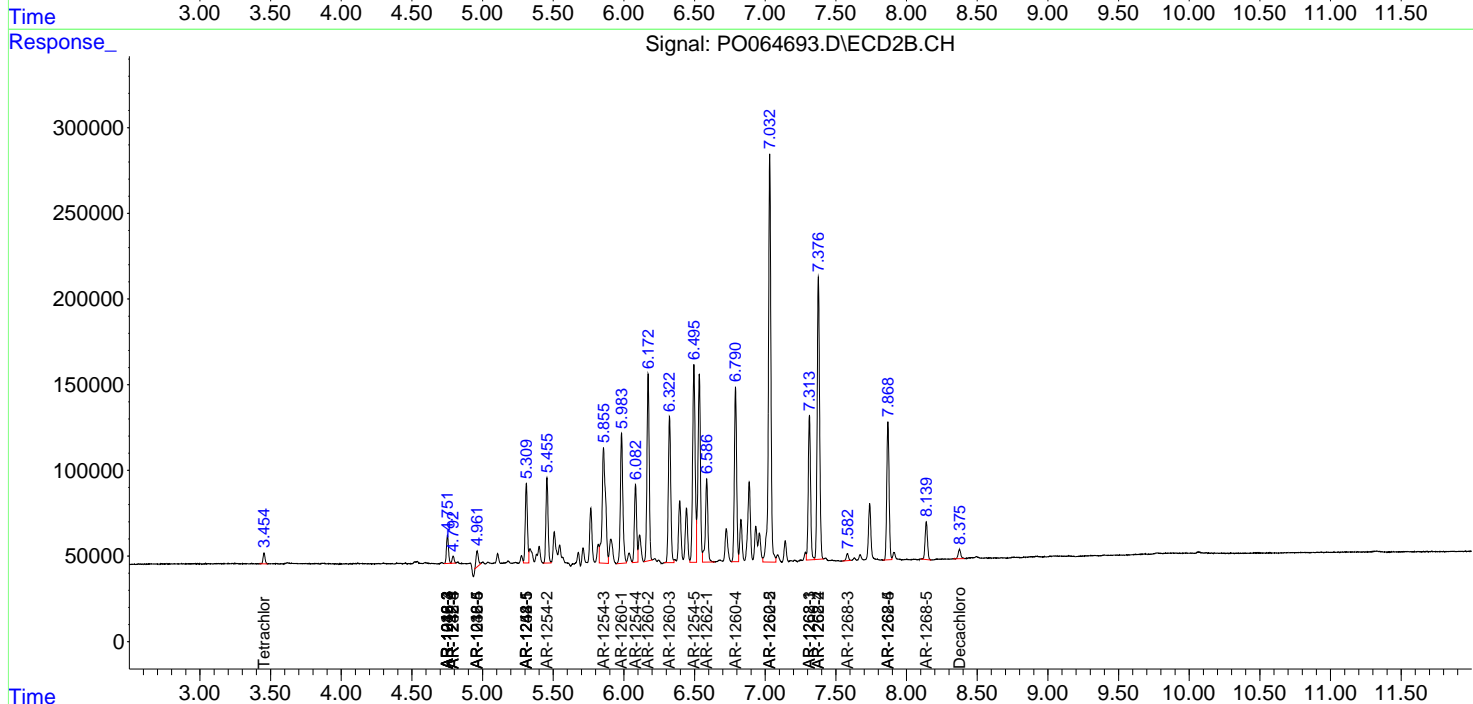
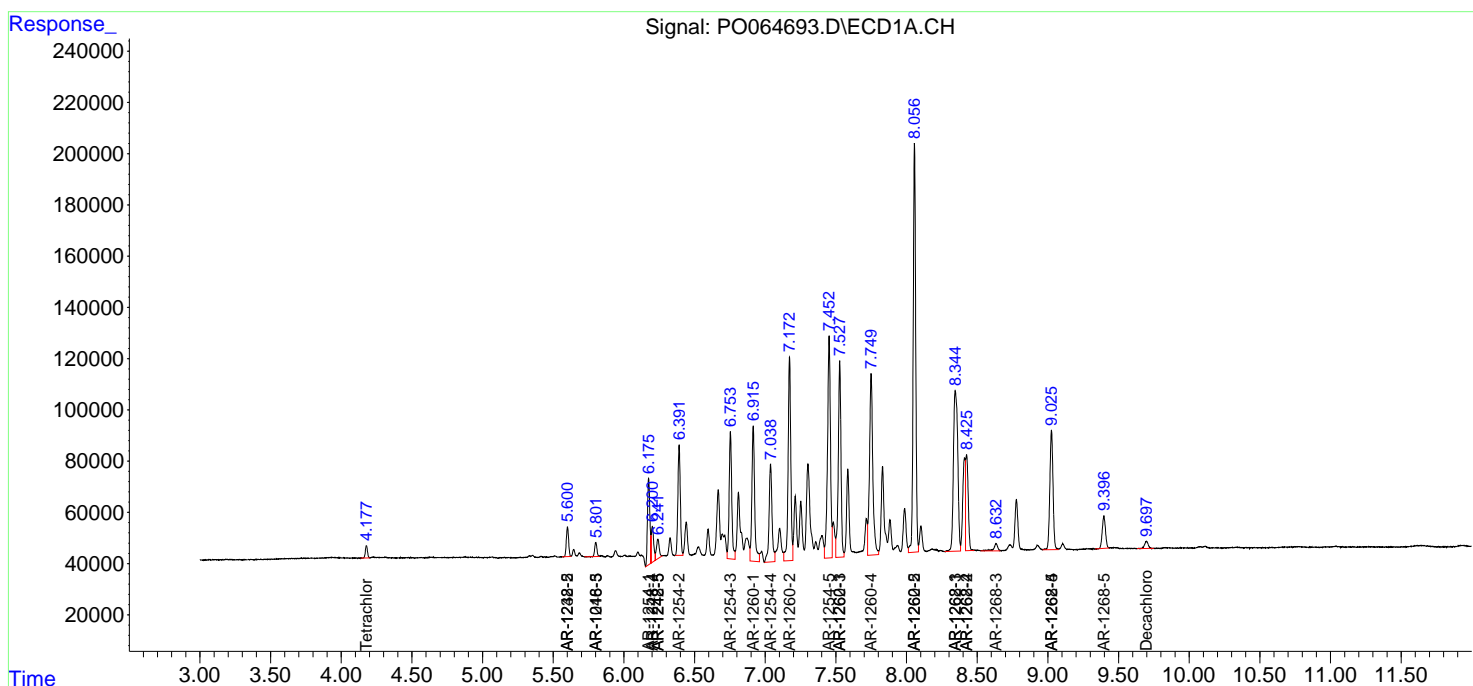
(f)=RT Delta > 1/2 Window (#)=Amounts differ by > 25% (m)=manual int.

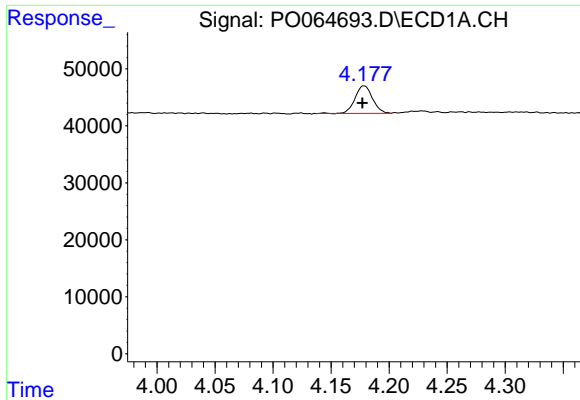
Data Path : Z:\pestpcbsrv\HPCHEM1\ECD\_0\Data\PO121619\  
 Data File : PO064693.D  
 Signal(s) : Signal #1: ECD1A.CH Signal #2: ECD2B.CH  
 Acq On : 16 Dec 2019 9:31  
 Operator : SM/AJ  
 Sample : K6142-16DL 10X  
 Misc :  
 ALS Vial : 7 Sample Multiplier: 1

Instrument :  
 ECD\_O  
 ClientSampled :  
 5FDL

Integration File signal 1: autoint1.e  
 Integration File signal 2: autoint2.e  
 Quant Time: Dec 16 10:36:46 2019  
 Quant Method : Z:\pestpcbsrv\HPCHEM1\ECD\_0\methods\PO121319.M  
 Quant Title : GC EXTRACTABLES  
 QLast Update : Fri Dec 13 08:19:24 2019  
 Response via : Initial Calibration  
 Integrator: ChemStation 6890 Scale Mode: Small noise peaks clipped

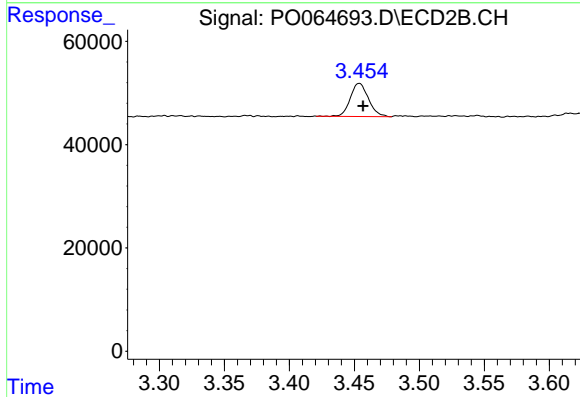
Volume Inj. : 2 µl  
 Signal #1 Phase : ZB-MR1 Signal #2 Phase: ZB-MR2  
 Signal #1 Info : 30Mx0.32mmx 0.50µ Signal #2 Info : 30M x 0.32mm x 0.25µm



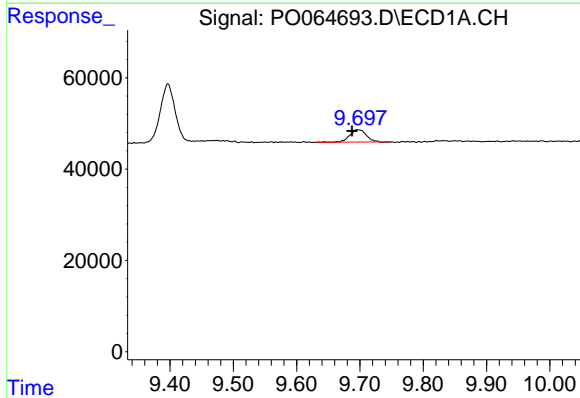


#1 Tetrachloro-m-xylene  
 R.T.: 4.178 min  
 Delta R.T.: 0.001 min  
 Response: 50269  
 Conc: 2.06 ng/ml

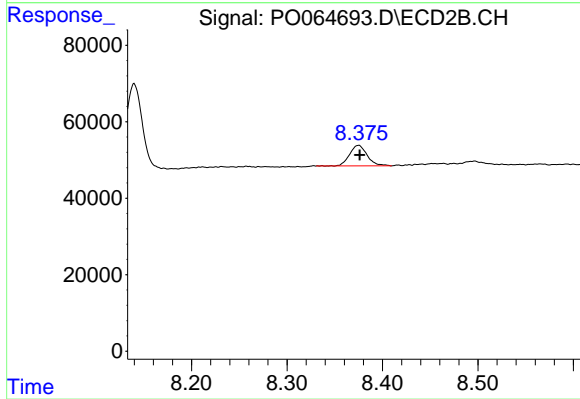
Instrument :  
 ECD\_O  
 ClientSampleId :  
 5FDL



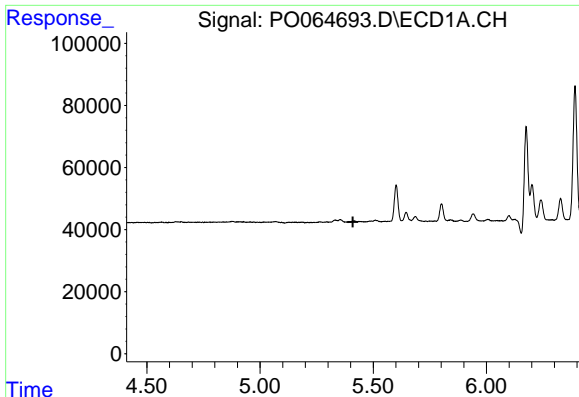
#1 Tetrachloro-m-xylene  
 R.T.: 3.454 min  
 Delta R.T.: -0.003 min  
 Response: 62221  
 Conc: 2.45 ng/ml



#2 Decachlorobiphenyl  
 R.T.: 9.696 min  
 Delta R.T.: 0.009 min  
 Response: 49696  
 Conc: 1.62 ng/ml



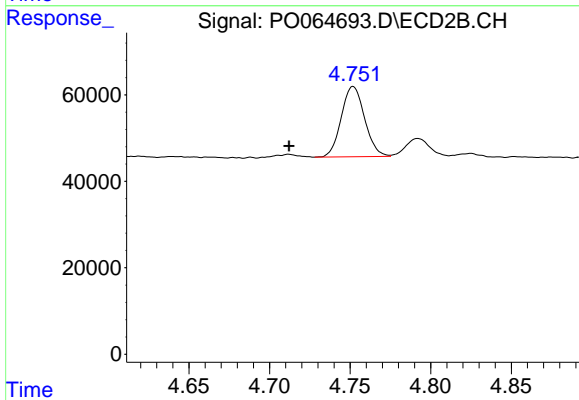
#2 Decachlorobiphenyl  
 R.T.: 8.375 min  
 Delta R.T.: -0.001 min  
 Response: 68870  
 Conc: 1.98 ng/ml



#5 AR-1016-3

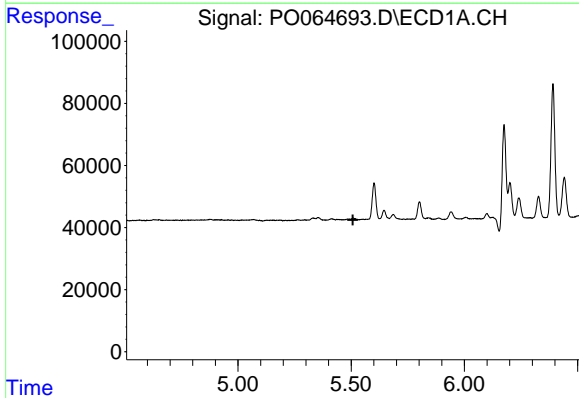
R.T.: 0.000 min  
 Exp R.T. : 5.410 min  
 Response: 0  
 Conc: N.D.

Instrument :  
 ECD\_O  
 ClientSampleId :  
 5FDL



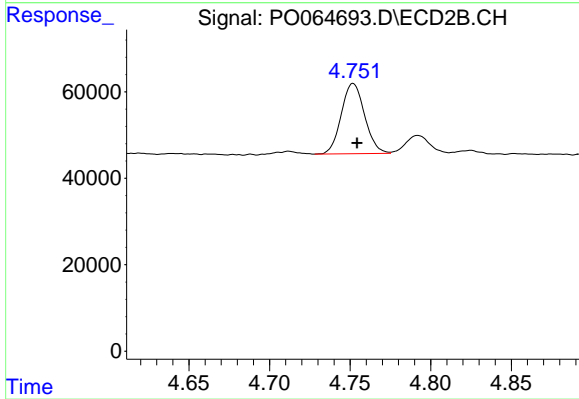
#5 AR-1016-3

R.T.: 4.752 min  
 Delta R.T.: 0.040 min  
 Response: 164211  
 Conc: 211.24 ng/ml



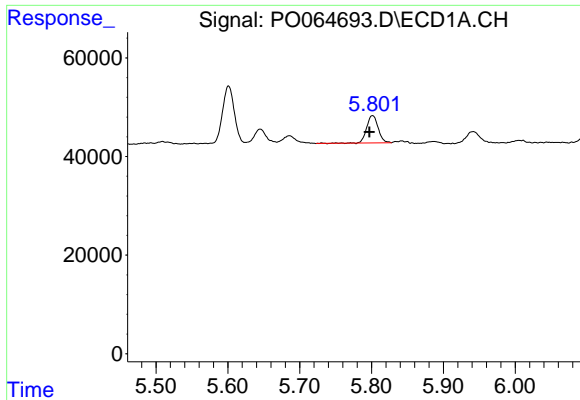
#6 AR-1016-4

R.T.: 0.000 min  
 Exp R.T. : 5.507 min  
 Response: 0  
 Conc: N.D.



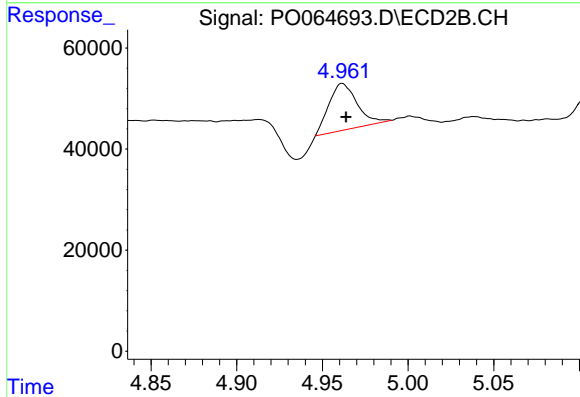
#6 AR-1016-4

R.T.: 4.752 min  
 Delta R.T.: -0.002 min  
 Response: 164211  
 Conc: 249.75 ng/ml

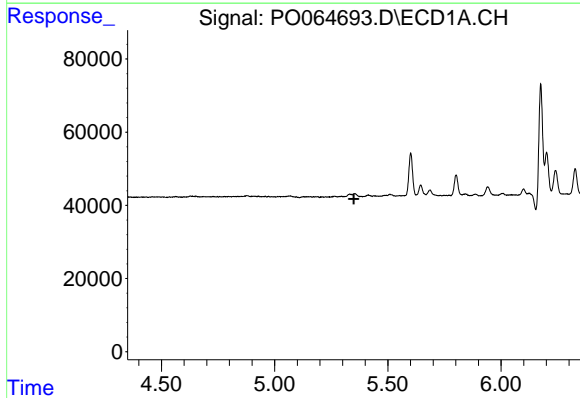


#7 AR-1016-5  
 R.T.: 5.801 min  
 Delta R.T.: 0.004 min  
 Response: 61199  
 Conc: 83.98 ng/ml

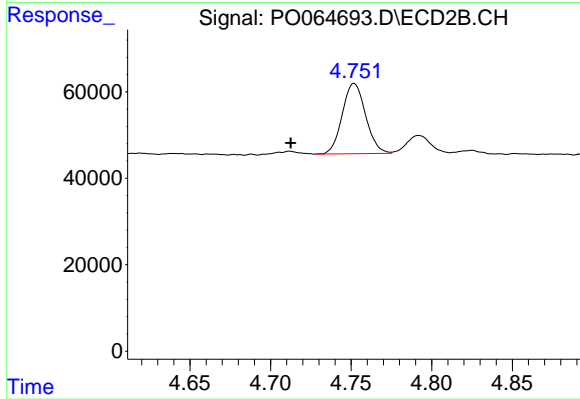
Instrument :  
 ECD\_O  
 ClientSampleId :  
 5FDL



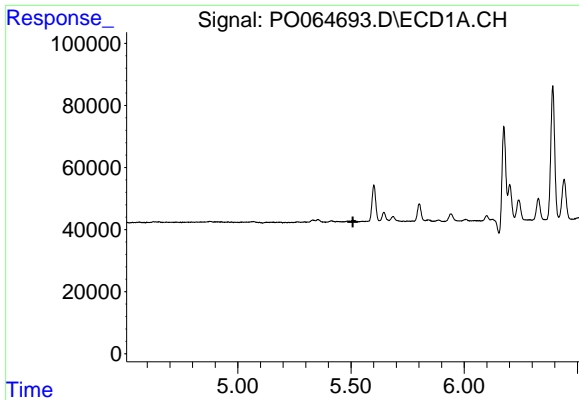
#7 AR-1016-5  
 R.T.: 4.962 min  
 Delta R.T.: -0.002 min  
 Response: 105244  
 Conc: 120.61 ng/ml



#13 AR-1232-3  
 R.T.: 0.000 min  
 Exp R.T. : 5.350 min  
 Response: 0  
 Conc: N.D.



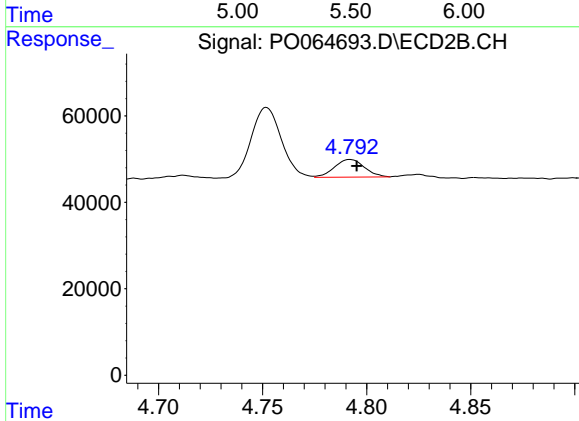
#13 AR-1232-3  
 R.T.: 4.752 min  
 Delta R.T.: 0.039 min  
 Response: 164211  
 Conc: 263.84 ng/ml



#14 AR-1232-4

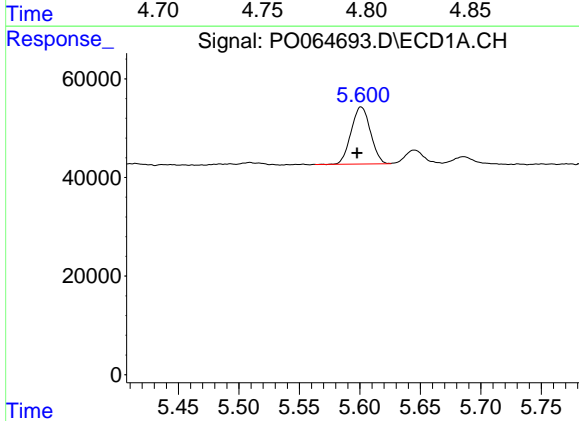
R.T.: 0.000 min  
 Exp R.T.: 5.508 min  
 Response: 0  
 Conc: N.D.

**Instrument :**  
 ECD\_O  
**ClientSampled :**  
 5FDL



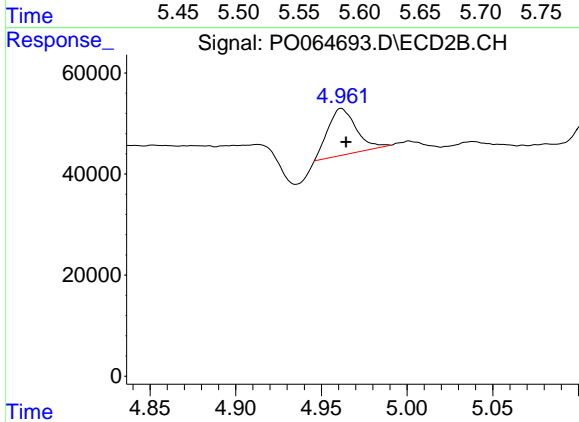
#14 AR-1232-4

R.T.: 4.792 min  
 Delta R.T.: -0.003 min  
 Response: 41014  
 Conc: 71.99 ng/ml



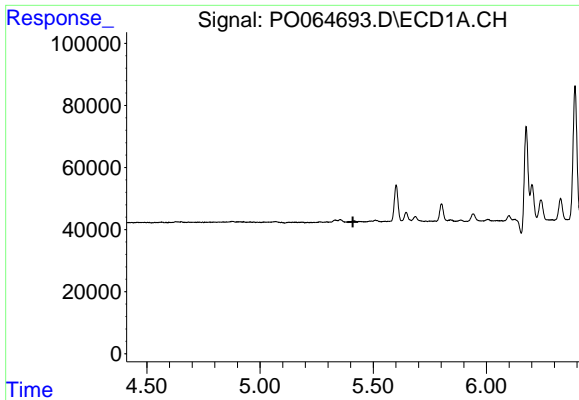
#15 AR-1232-5

R.T.: 5.601 min  
 Delta R.T.: 0.003 min  
 Response: 128780  
 Conc: 310.32 ng/ml



#15 AR-1232-5

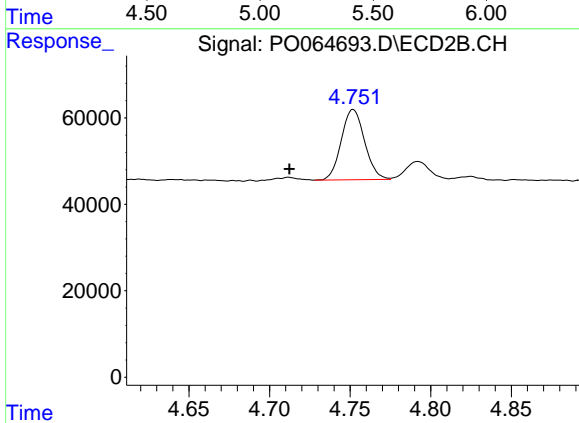
R.T.: 4.962 min  
 Delta R.T.: -0.003 min  
 Response: 105244  
 Conc: 165.82 ng/ml



#18 AR-1242-3

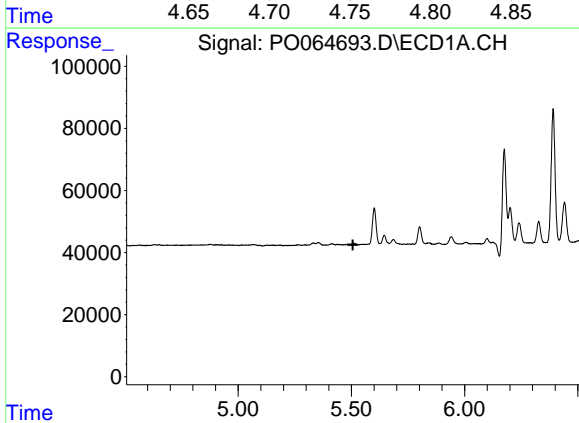
R.T.: 0.000 min  
 Exp R.T.: 5.410 min  
 Response: 0  
 Conc: N.D.

**Instrument :**  
 ECD\_O  
**ClientSampled :**  
 5FDL



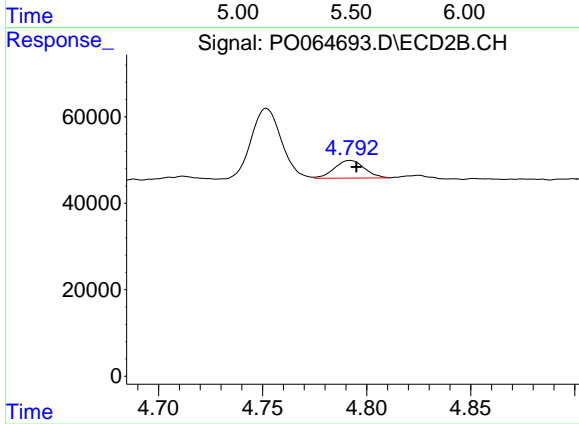
#18 AR-1242-3

R.T.: 4.752 min  
 Delta R.T.: 0.040 min  
 Response: 164211  
 Conc: 258.95 ng/ml



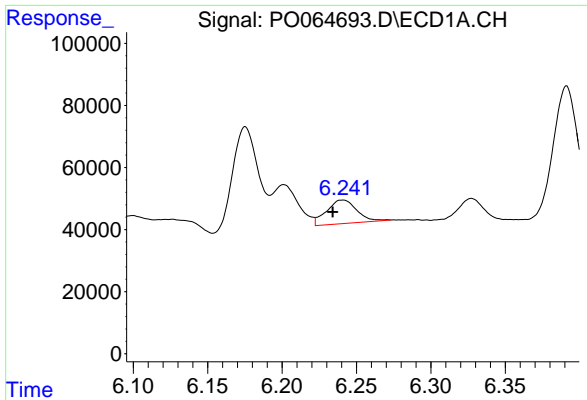
#19 AR-1242-4

R.T.: 0.000 min  
 Exp R.T.: 5.507 min  
 Response: 0  
 Conc: N.D.



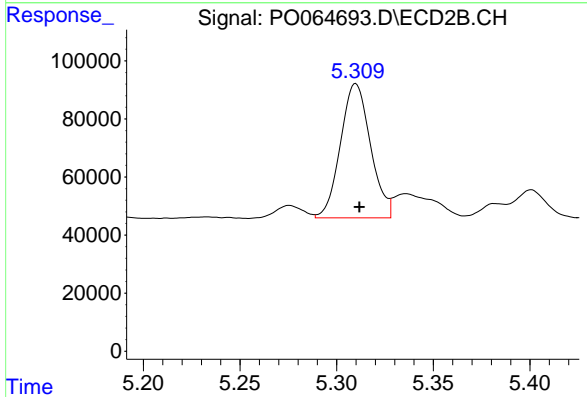
#19 AR-1242-4

R.T.: 4.792 min  
 Delta R.T.: -0.003 min  
 Response: 41014  
 Conc: 63.01 ng/ml

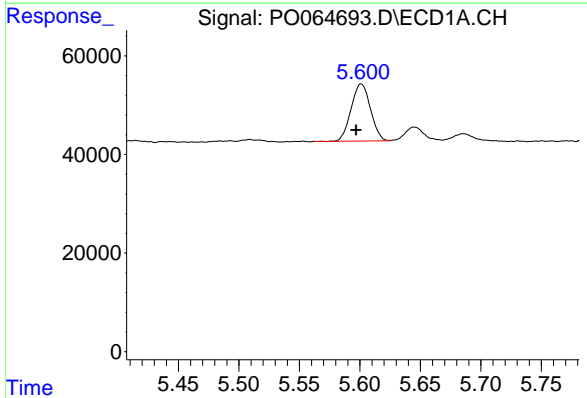


#20 AR-1242-5  
 R.T.: 6.241 min  
 Delta R.T.: 0.007 min  
 Response: 107102  
 Conc: 153.68 ng/ml

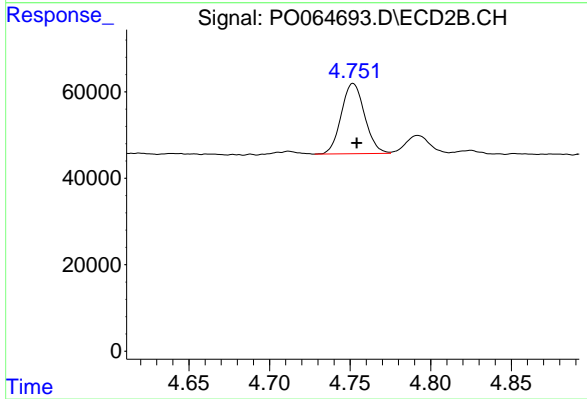
**Instrument :**  
 ECD\_O  
**ClientSampled :**  
 5FDL



#20 AR-1242-5  
 R.T.: 5.310 min  
 Delta R.T.: -0.002 min  
 Response: 499748  
 Conc: 562.18 ng/ml

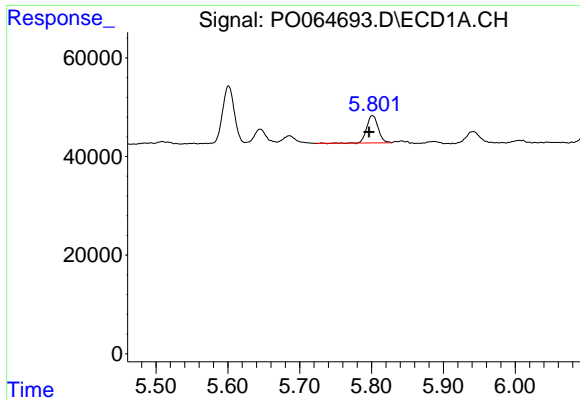


#22 AR-1248-2  
 R.T.: 5.601 min  
 Delta R.T.: 0.004 min  
 Response: 128780  
 Conc: 139.36 ng/ml



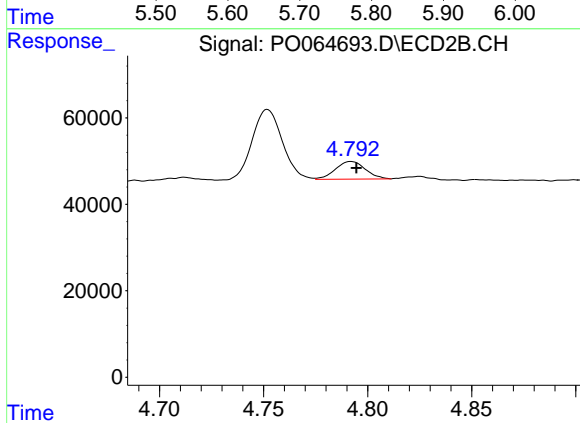
#22 AR-1248-2  
 R.T.: 4.752 min  
 Delta R.T.: -0.002 min  
 Response: 164211  
 Conc: 167.24 ng/ml



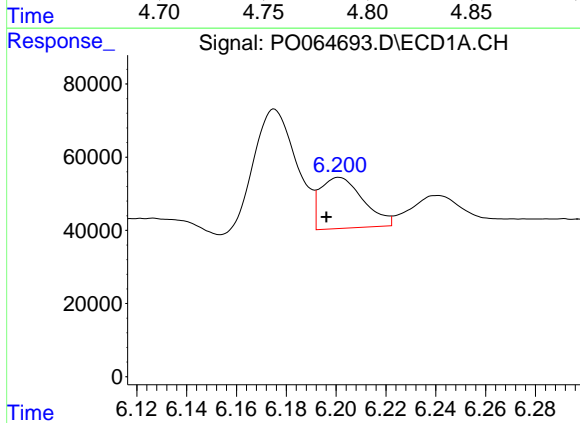


#23 AR-1248-3  
 R.T.: 5.801 min  
 Delta R.T.: 0.005 min  
 Response: 61199  
 Conc: 57.61 ng/ml

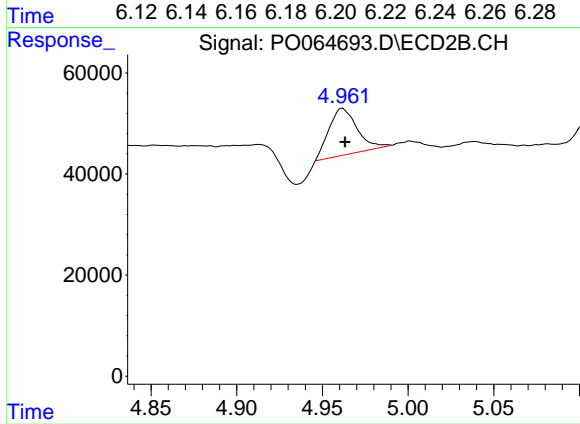
Instrument :  
 ECD\_O  
 ClientSampled :  
 5FDL



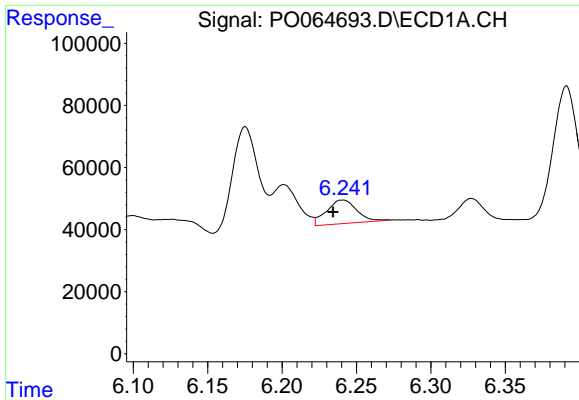
#23 AR-1248-3  
 R.T.: 4.792 min  
 Delta R.T.: -0.002 min  
 Response: 41014  
 Conc: 40.31 ng/ml



#24 AR-1248-4  
 R.T.: 6.201 min  
 Delta R.T.: 0.005 min  
 Response: 166343  
 Conc: 127.55 ng/ml



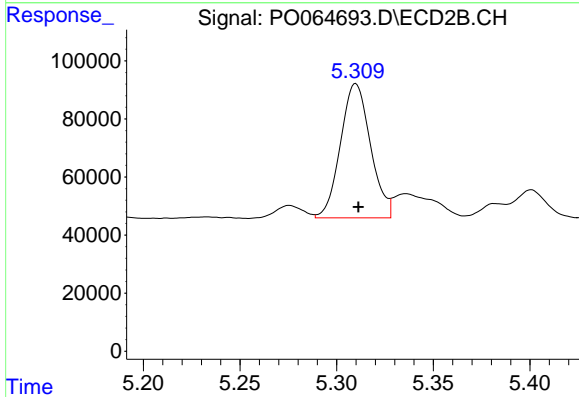
#24 AR-1248-4  
 R.T.: 4.962 min  
 Delta R.T.: -0.002 min  
 Response: 105244  
 Conc: 81.77 ng/ml



#25 AR-1248-5

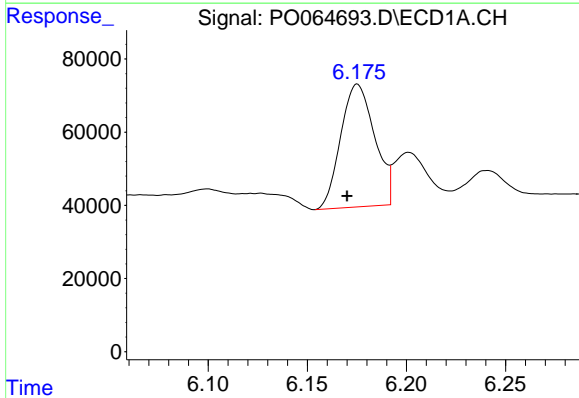
R.T.: 6.241 min  
 Delta R.T.: 0.006 min  
 Response: 107102  
 Conc: 86.07 ng/ml

Instrument :  
 ECD\_O  
 ClientSampled :  
 5FDL



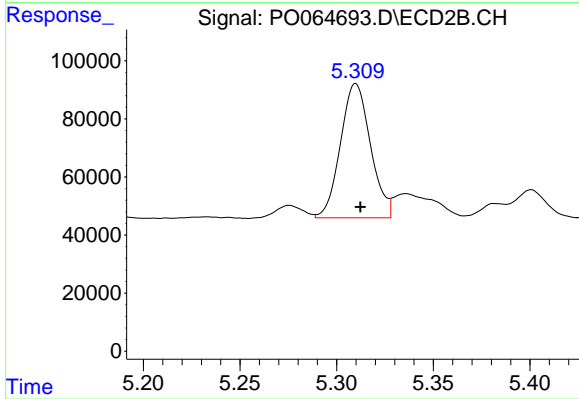
#25 AR-1248-5

R.T.: 5.310 min  
 Delta R.T.: -0.001 min  
 Response: 499748  
 Conc: 262.88 ng/ml



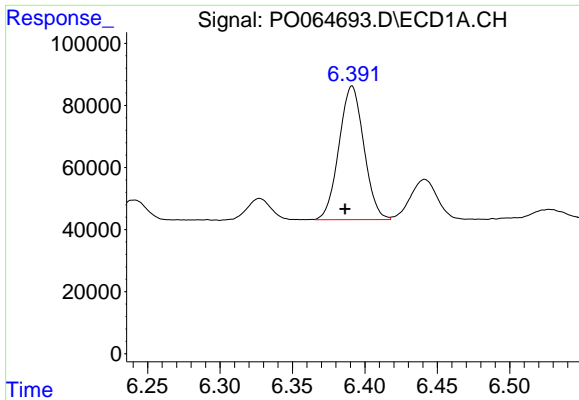
#26 AR-1254-1

R.T.: 6.175 min  
 Delta R.T.: 0.005 min  
 Response: 400253  
 Conc: 314.28 ng/ml



#26 AR-1254-1

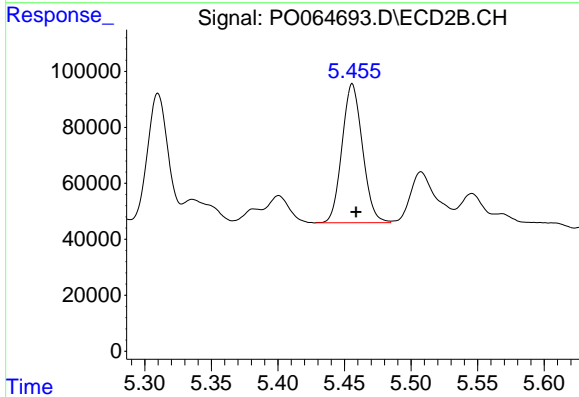
R.T.: 5.310 min  
 Delta R.T.: -0.002 min  
 Response: 499748  
 Conc: 246.09 ng/ml



#27 AR-1254-2

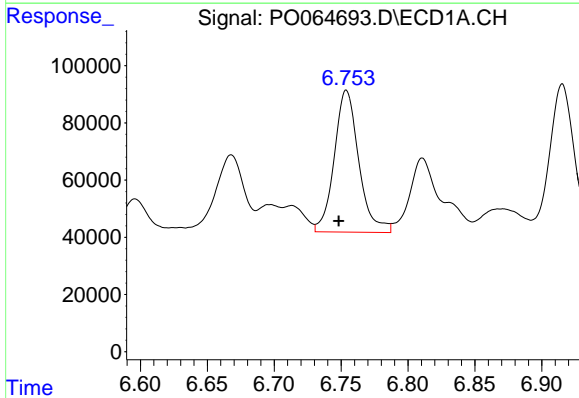
R.T.: 6.391 min  
 Delta R.T.: 0.005 min  
 Response: 514526  
 Conc: 247.36 ng/ml

Instrument :  
 ECD\_O  
 ClientSampled :  
 5FDL



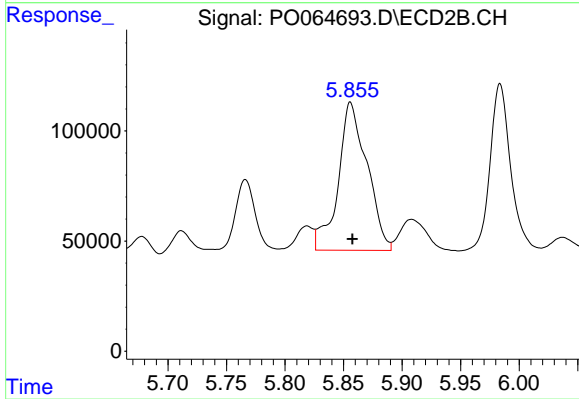
#27 AR-1254-2

R.T.: 5.456 min  
 Delta R.T.: -0.003 min  
 Response: 531642  
 Conc: 291.57 ng/ml



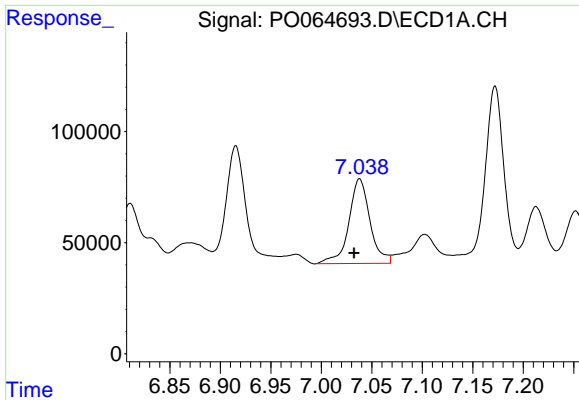
#28 AR-1254-3

R.T.: 6.754 min  
 Delta R.T.: 0.006 min  
 Response: 634307  
 Conc: 265.65 ng/ml



#28 AR-1254-3

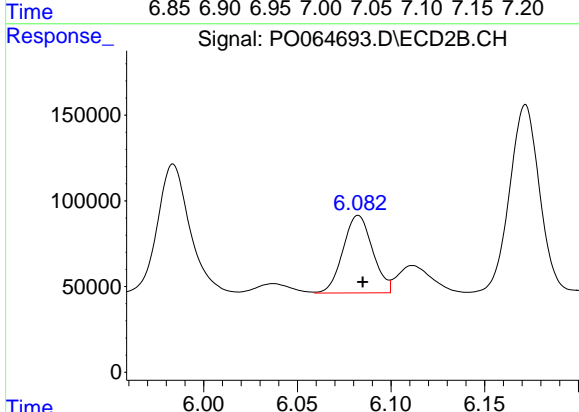
R.T.: 5.856 min  
 Delta R.T.: -0.002 min  
 Response: 1153748  
 Conc: 371.41 ng/ml



#29 AR-1254-4

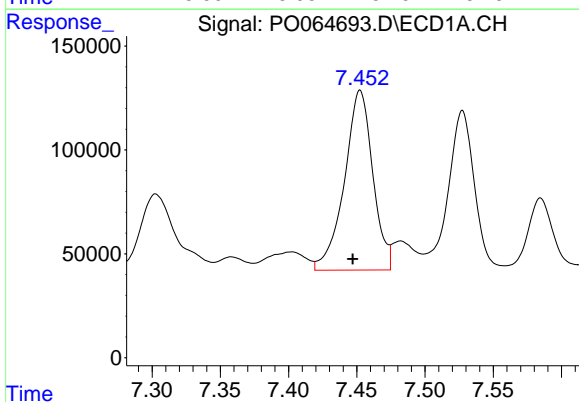
R.T.: 7.038 min  
 Delta R.T.: 0.006 min  
 Response: 555871  
 Conc: 297.27 ng/ml

**Instrument :**  
 ECD\_O  
**ClientSampled :**  
 5FDL



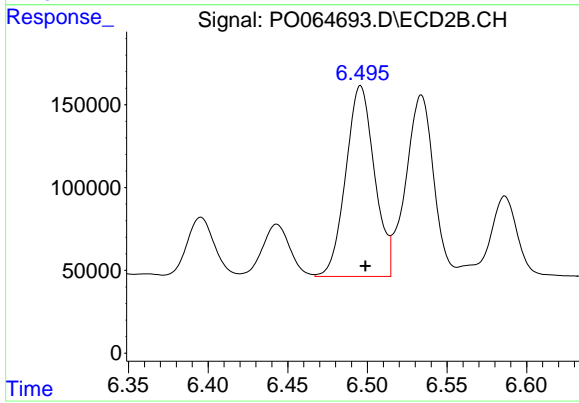
#29 AR-1254-4

R.T.: 6.083 min  
 Delta R.T.: -0.002 min  
 Response: 496433  
 Conc: 241.69 ng/ml



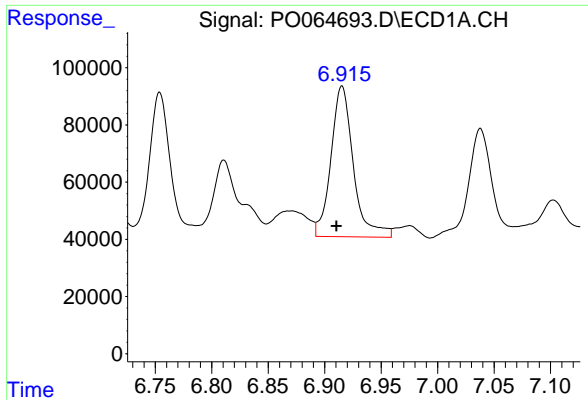
#30 AR-1254-5

R.T.: 7.452 min  
 Delta R.T.: 0.005 min  
 Response: 1252152  
 Conc: 595.12 ng/ml



#30 AR-1254-5

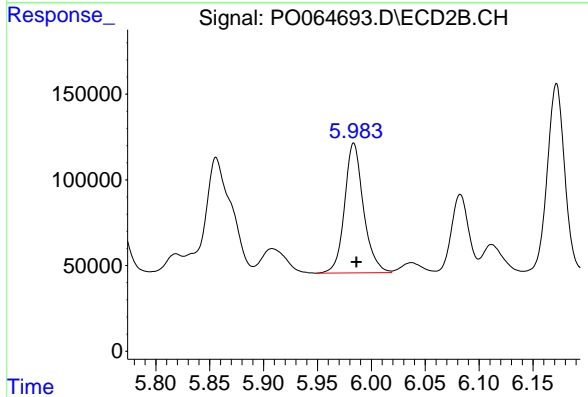
R.T.: 6.496 min  
 Delta R.T.: -0.003 min  
 Response: 1445659  
 Conc: 484.33 ng/ml



#31 AR-1260-1

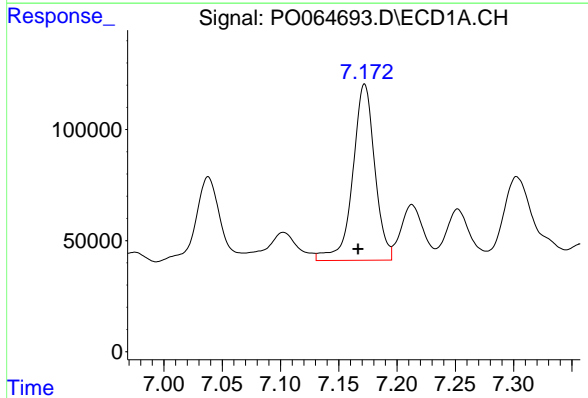
R.T.: 6.915 min  
 Delta R.T.: 0.005 min  
 Response: 728610  
 Conc: 474.26 ng/ml

Instrument :  
 ECD\_O  
 ClientSampleId :  
 5FDL



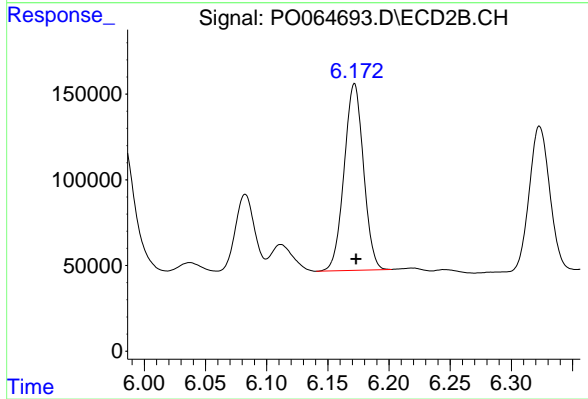
#31 AR-1260-1

R.T.: 5.984 min  
 Delta R.T.: -0.002 min  
 Response: 922391  
 Conc: 499.53 ng/ml



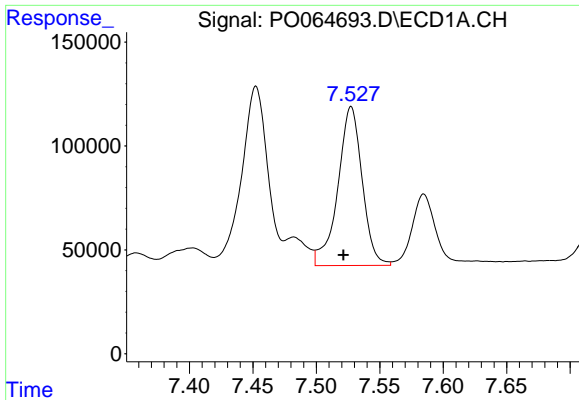
#32 AR-1260-2

R.T.: 7.172 min  
 Delta R.T.: 0.006 min  
 Response: 1045520  
 Conc: 529.65 ng/ml



#32 AR-1260-2

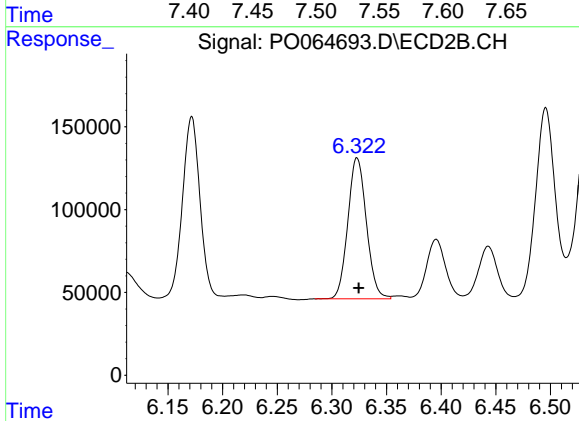
R.T.: 6.172 min  
 Delta R.T.: -0.001 min  
 Response: 1198872  
 Conc: 515.29 ng/ml



#33 AR-1260-3

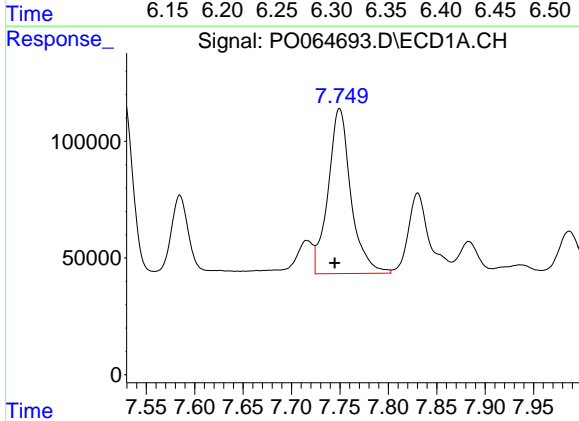
R.T.: 7.527 min  
 Delta R.T.: 0.006 min  
 Response: 1020980  
 Conc: 679.47 ng/ml

Instrument :  
 ECD\_O  
 ClientSampled :  
 5FDL



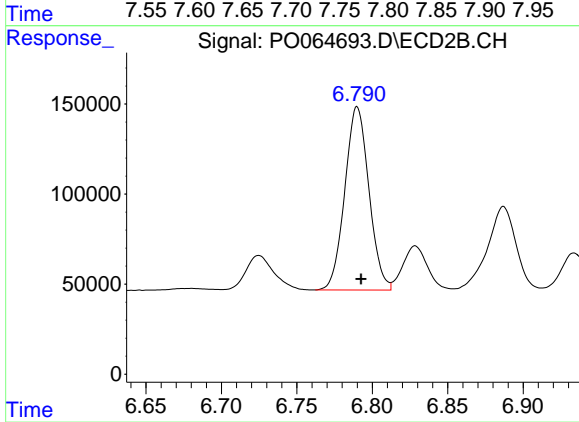
#33 AR-1260-3

R.T.: 6.323 min  
 Delta R.T.: -0.001 min  
 Response: 1007265  
 Conc: 475.73 ng/ml



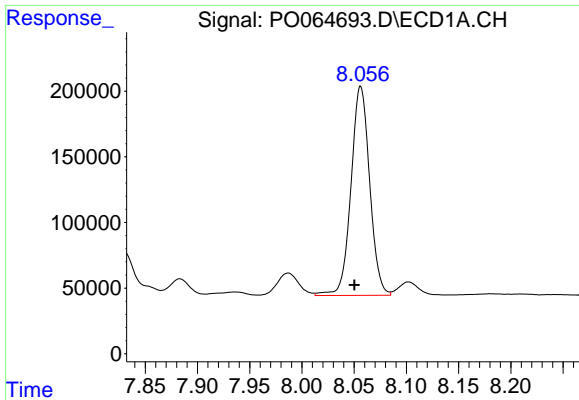
#34 AR-1260-4

R.T.: 7.750 min  
 Delta R.T.: 0.005 min  
 Response: 1158027  
 Conc: 626.90 ng/ml



#34 AR-1260-4

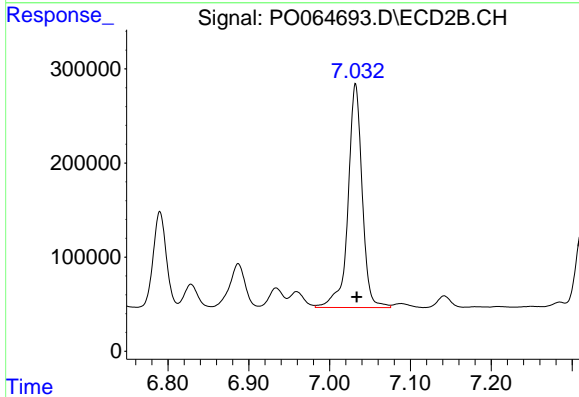
R.T.: 6.790 min  
 Delta R.T.: -0.003 min  
 Response: 1133318  
 Conc: 601.58 ng/ml



#35 AR-1260-5

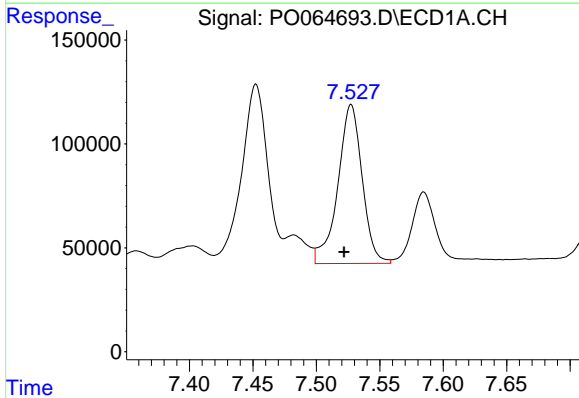
R.T.: 8.056 min  
 Delta R.T.: 0.006 min  
 Response: 1983212  
 Conc: 531.45 ng/ml

Instrument :  
 ECD\_O  
 ClientSampled :  
 5FDL



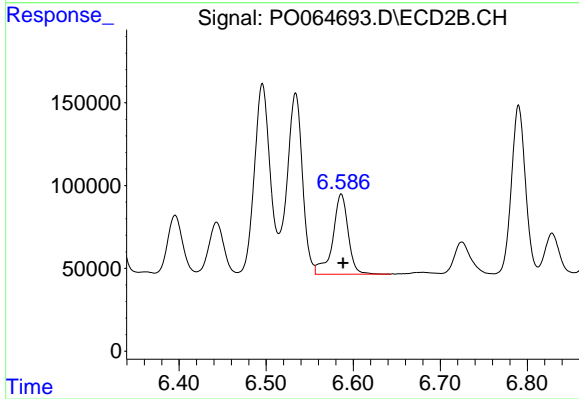
#35 AR-1260-5

R.T.: 7.032 min  
 Delta R.T.: -0.001 min  
 Response: 2895690  
 Conc: 617.41 ng/ml



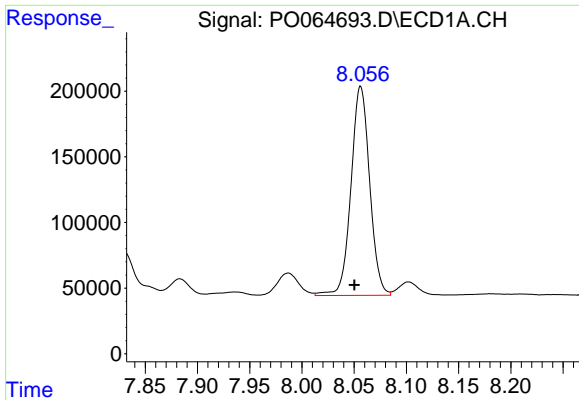
#36 AR-1262-1

R.T.: 7.527 min  
 Delta R.T.: 0.006 min  
 Response: 1020980  
 Conc: 444.01 ng/ml



#36 AR-1262-1

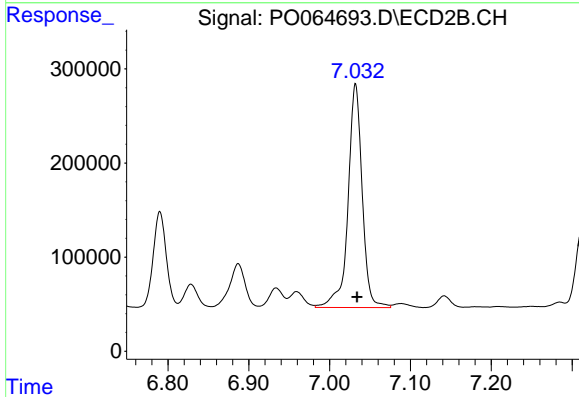
R.T.: 6.586 min  
 Delta R.T.: -0.002 min  
 Response: 599890  
 Conc: 522.89 ng/ml



#37 AR-1262-2

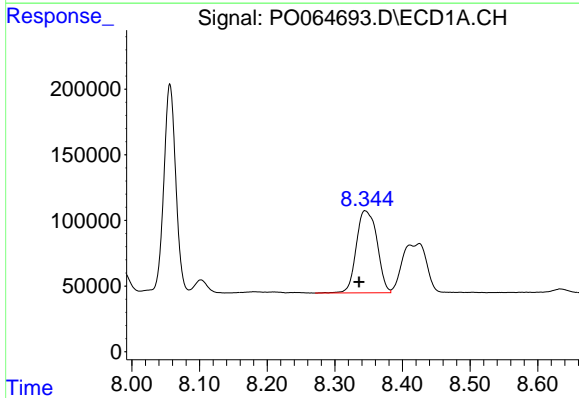
R.T.: 8.056 min  
 Delta R.T.: 0.006 min  
 Response: 1983212  
 Conc: 456.90 ng/ml

Instrument :  
 ECD\_O  
 ClientSampled :  
 5FDL



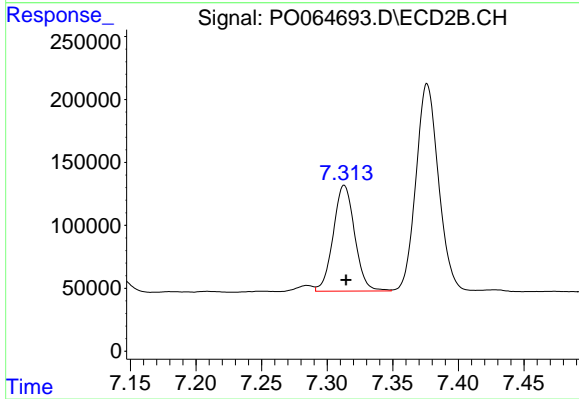
#37 AR-1262-2

R.T.: 7.032 min  
 Delta R.T.: -0.002 min  
 Response: 2895690  
 Conc: 529.93 ng/ml



#38 AR-1262-3

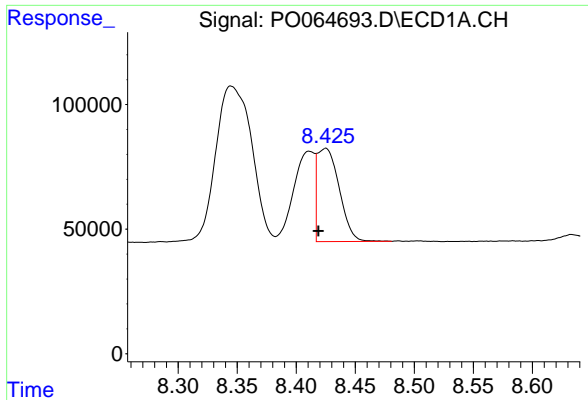
R.T.: 8.345 min  
 Delta R.T.: 0.009 min  
 Response: 1331706  
 Conc: 457.63 ng/ml



#38 AR-1262-3

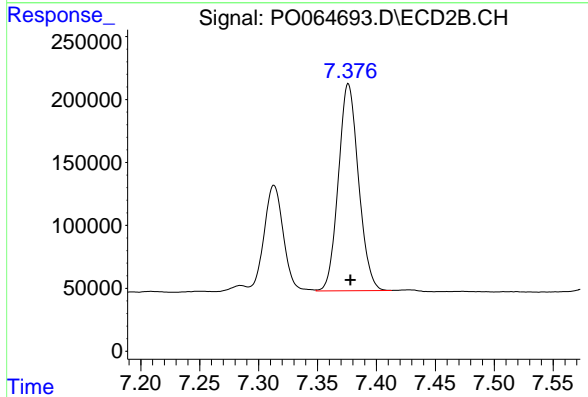
R.T.: 7.313 min  
 Delta R.T.: -0.001 min  
 Response: 957017  
 Conc: 459.48 ng/ml



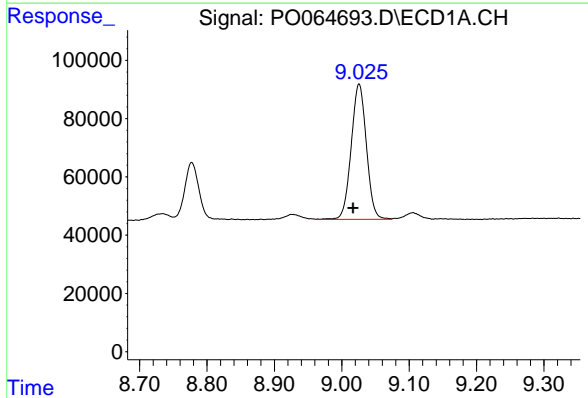


#39 AR-1262-4  
 R.T.: 8.425 min  
 Delta R.T.: 0.006 min  
 Response: 484681  
 Conc: 223.94 ng/ml

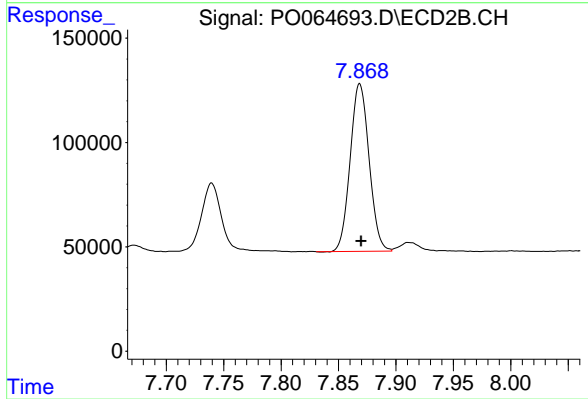
**Instrument :**  
 ECD\_O  
**ClientSampled :**  
 5FDL



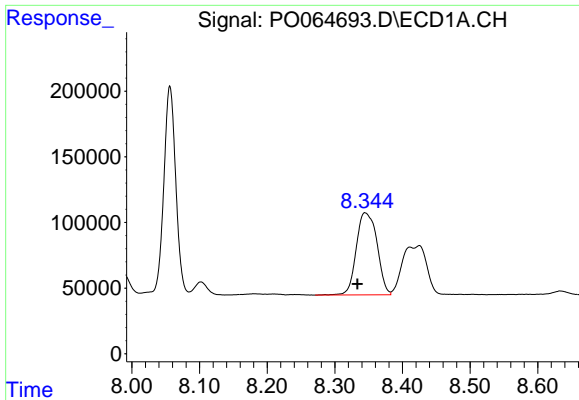
#39 AR-1262-4  
 R.T.: 7.376 min  
 Delta R.T.: -0.002 min  
 Response: 1955913  
 Conc: 491.30 ng/ml



#40 AR-1262-5  
 R.T.: 9.026 min  
 Delta R.T.: 0.009 min  
 Response: 727293  
 Conc: 495.82 ng/ml



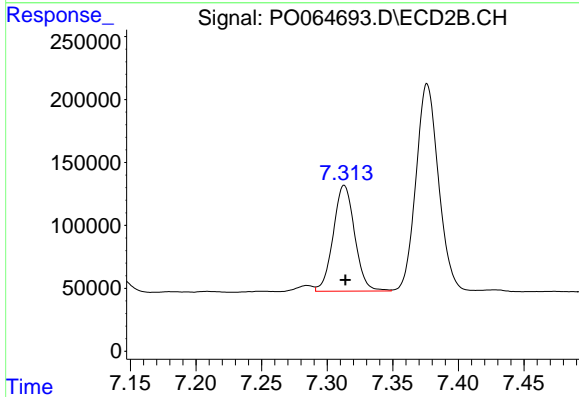
#40 AR-1262-5  
 R.T.: 7.869 min  
 Delta R.T.: -0.001 min  
 Response: 924062  
 Conc: 529.98 ng/ml



#41 AR-1268-1

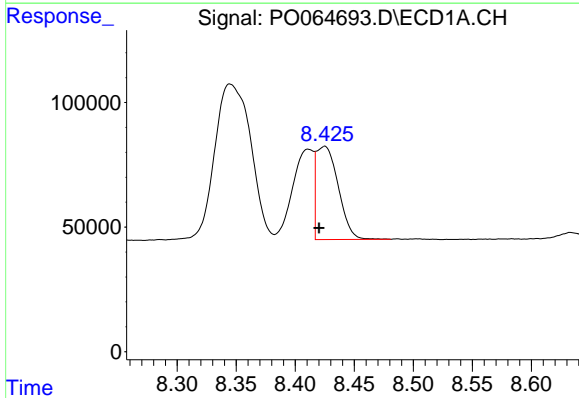
R.T.: 8.345 min  
 Delta R.T.: 0.011 min  
 Response: 1331706  
 Conc: 257.68 ng/ml

Instrument :  
 ECD\_O  
 ClientSampled :  
 5FDL



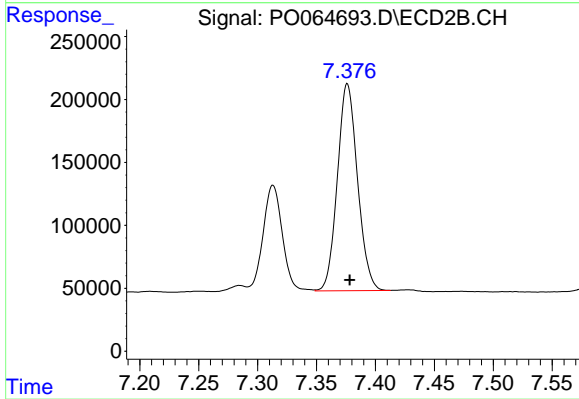
#41 AR-1268-1

R.T.: 7.313 min  
 Delta R.T.: 0.000 min  
 Response: 957017  
 Conc: 149.66 ng/ml



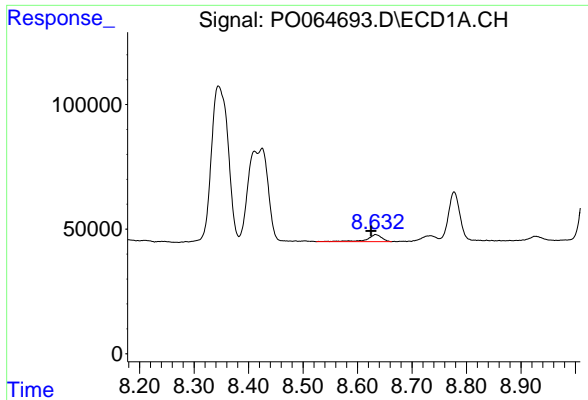
#42 AR-1268-2

R.T.: 8.425 min  
 Delta R.T.: 0.005 min  
 Response: 484681  
 Conc: 103.07 ng/ml



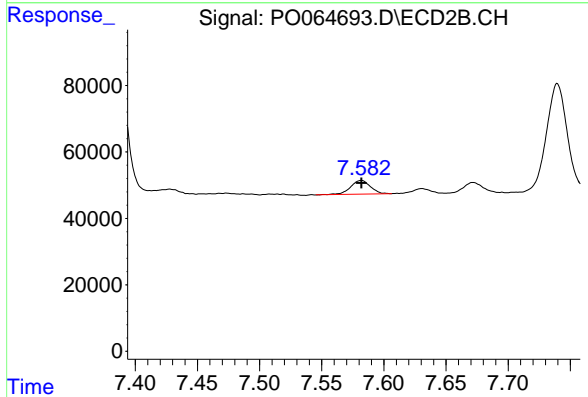
#42 AR-1268-2

R.T.: 7.376 min  
 Delta R.T.: -0.002 min  
 Response: 1955913  
 Conc: 335.58 ng/ml

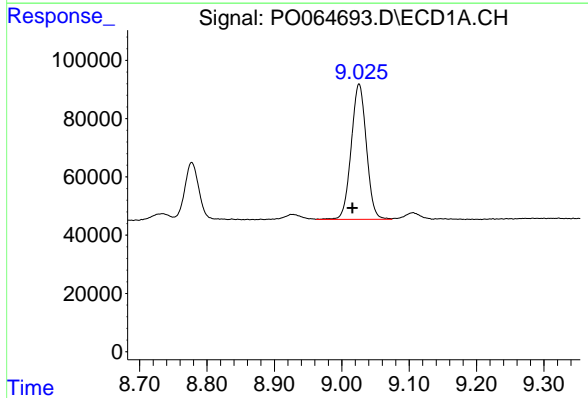


#43 AR-1268-3  
 R.T.: 8.633 min  
 Delta R.T.: 0.008 min  
 Response: 54352  
 Conc: 14.10 ng/ml

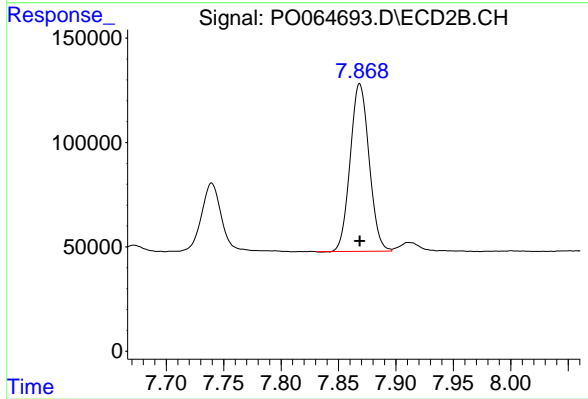
Instrument :  
 ECD\_O  
 ClientSampleId :  
 5FDL



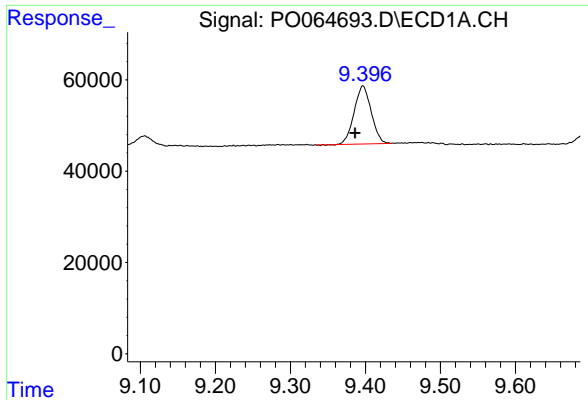
#43 AR-1268-3  
 R.T.: 7.582 min  
 Delta R.T.: 0.000 min  
 Response: 45851  
 Conc: 9.60 ng/ml



#44 AR-1268-4  
 R.T.: 9.026 min  
 Delta R.T.: 0.010 min  
 Response: 727293  
 Conc: 432.60 ng/ml



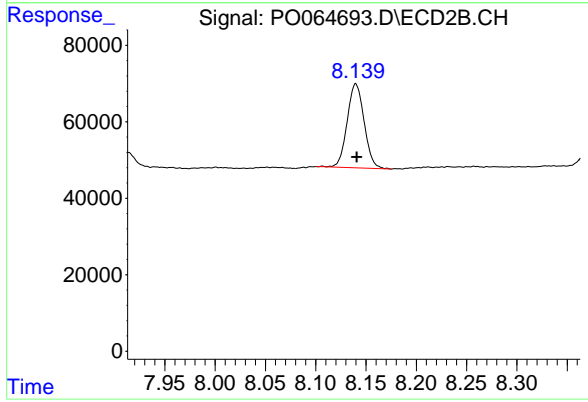
#44 AR-1268-4  
 R.T.: 7.869 min  
 Delta R.T.: 0.000 min  
 Response: 924062  
 Conc: 459.07 ng/ml



#45 AR-1268-5

R.T.: 9.397 min  
Delta R.T.: 0.010 min  
Response: 201356  
Conc: 16.97 ng/ml

Instrument :  
ECD\_O  
ClientSampleId :  
5FDL



#45 AR-1268-5

R.T.: 8.140 min  
Delta R.T.: 0.000 min  
Response: 258412  
Conc: 17.86 ng/ml