

Data Path : Z:\pestpcbsrv\HPCHEM1\ECD_0\Data\PO121619\
 Data File : PO064705.D
 Signal(s) : Signal #1: ECD1A.CH Signal #2: ECD2B.CH
 Acq On : 16 Dec 2019 14:48
 Operator : SM/AJ
 Sample : AR1660CCC500
 Misc :
 ALS Vial : 3 Sample Multiplier: 1

Instrument :
 ECD_0
 ClientSampleId :
 AR1660CCC500

Integration File signal 1: autoint1.e
 Integration File signal 2: autoint2.e
 Quant Time: Dec 16 15:29:56 2019
 Quant Method : Z:\pestpcbsrv\HPCHEM1\ECD_0\methods\PO121319.M
 Quant Title : GC EXTRACTABLES
 QLast Update : Fri Dec 13 08:19:24 2019
 Response via : Initial Calibration
 Integrator: ChemStation 6890 Scale Mode: Small noise peaks clipped

Volume Inj. : 2 µl
 Signal #1 Phase : ZB-MR1 Signal #2 Phase: ZB-MR2
 Signal #1 Info : 30Mx0.32mmx 0.50µ Signal #2 Info : 30M x 0.32mm x 0.25µm

Compound	RT#1	RT#2	Resp#1	Resp#2	ng/ml	ng/ml

System Monitoring Compounds						
1) SA Tetrachlo...	4.187	3.455	1146245	1345562	47.083	53.081
2) SA Decachlor...	9.706	8.378	1375209	1741583	44.809	50.149
Target Compounds						
3) L1 AR-1016-1	5.339	4.521	493858	598254	494.931	553.179
4) L1 AR-1016-2	5.361	4.540	722174	857074	497.269m	569.908
5) L1 AR-1016-3	5.422	4.712	448665	448035	507.082	576.351
6) L1 AR-1016-4	5.519	4.755	370671	371312	511.750	564.741
7) L1 AR-1016-5	5.810	4.964	378268	517549	519.048	593.138
31) L7 AR-1260-1	6.923	5.987	724770	974510	471.761	527.760
32) L7 AR-1260-2	7.179	6.174	913506	1228482	462.769	528.015
33) L7 AR-1260-3	7.534	6.326	711168	1113103	473.288	525.713
34) L7 AR-1260-4	7.757	6.794	833881	967417	451.424	513.519
35) L7 AR-1260-5	8.063	7.036	1630989	2259347	437.063	481.735

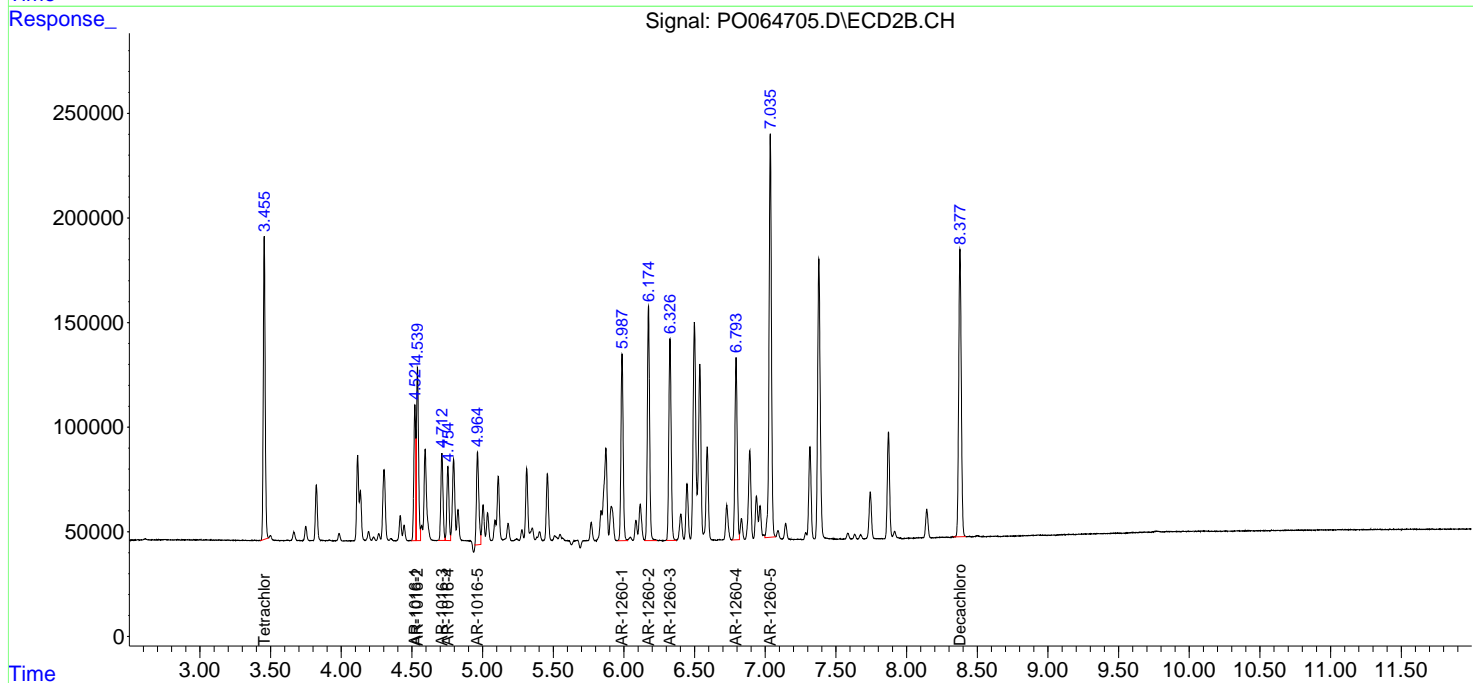
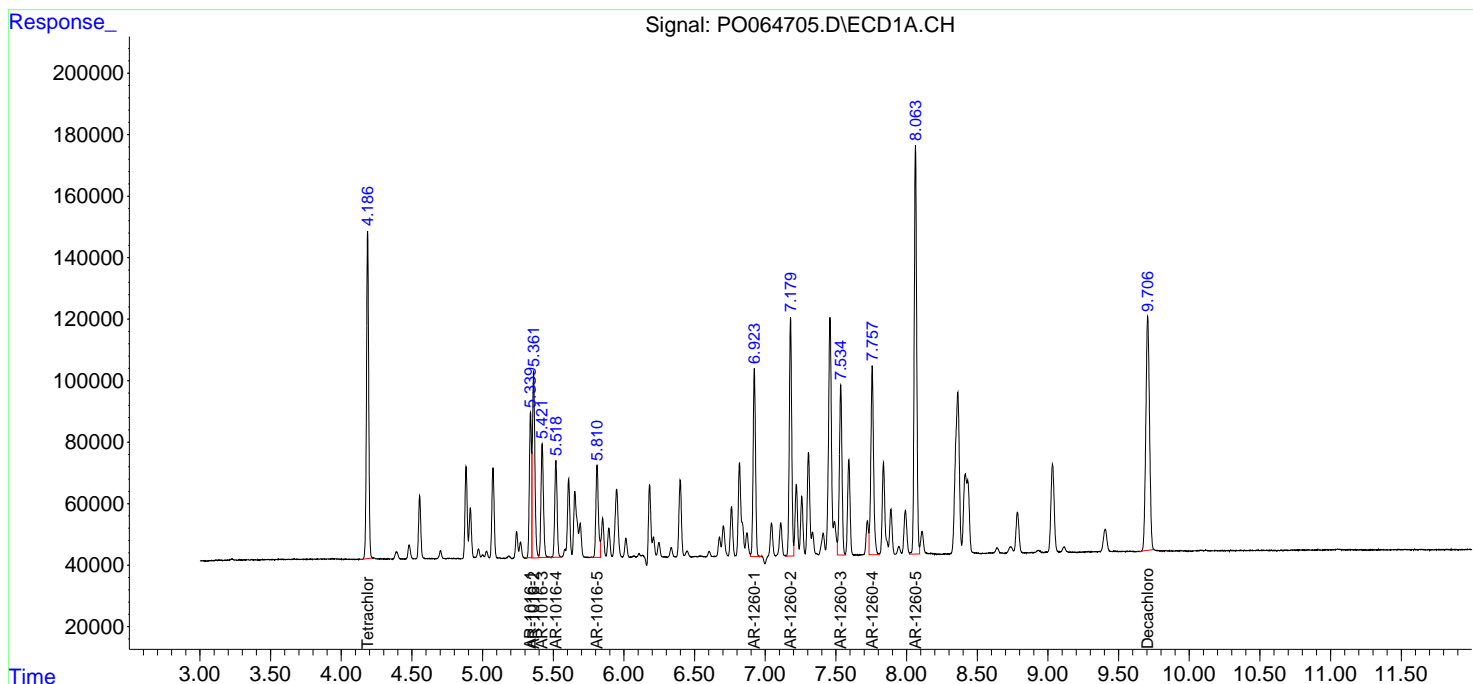
(f)=RT Delta > 1/2 Window (#)=Amounts differ by > 25% (m)=manual int.

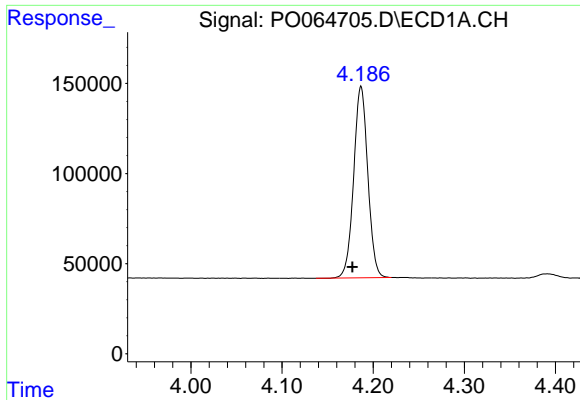
Data Path : Z:\pestpcbsrv\HPCHEM1\ECD_O\Data\PO121619\
 Data File : PO064705.D
 Signal(s) : Signal #1: ECD1A.CH Signal #2: ECD2B.CH
 Acq On : 16 Dec 2019 14:48
 Operator : SM/AJ
 Sample : AR1660CCC500
 Misc :
 ALS Vial : 3 Sample Multiplier: 1

Instrument :
 ECD_O
 ClientSampled :
 AR1660CCC500

Integration File signal 1: autoint1.e
 Integration File signal 2: autoint2.e
 Quant Time: Dec 16 15:29:56 2019
 Quant Method : Z:\pestpcbsrv\HPCHEM1\ECD_O\methods\PO121319.M
 Quant Title : GC EXTRACTABLES
 QLast Update : Fri Dec 13 08:19:24 2019
 Response via : Initial Calibration
 Integrator: ChemStation 6890 Scale Mode: Small noise peaks clipped

Volume Inj. : 2 µl
 Signal #1 Phase : ZB-MR1 Signal #2 Phase: ZB-MR2
 Signal #1 Info : 30Mx0.32mmx 0.50µ Signal #2 Info : 30M x 0.32mm x 0.25µm

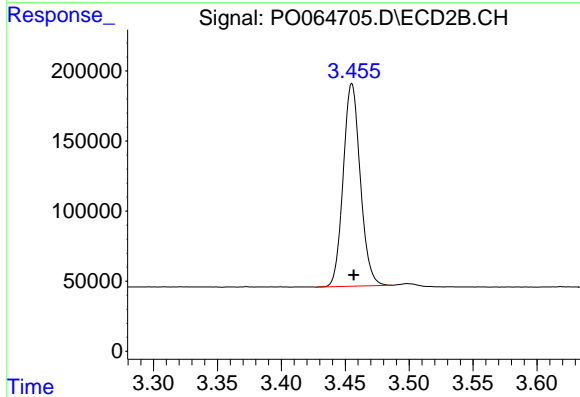




#1 Tetrachloro-m-xylene

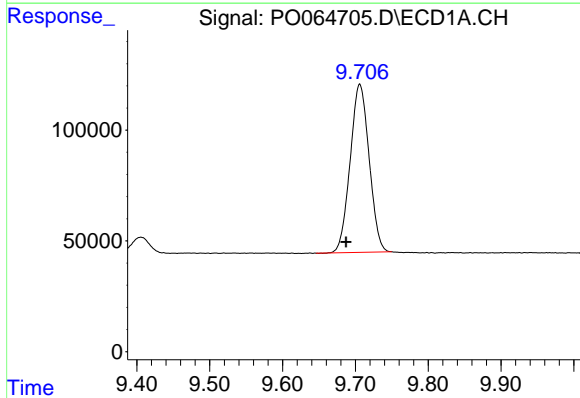
R.T.: 4.187 min
 Delta R.T.: 0.010 min
 Response: 1146245
 Conc: 47.08 ng/ml

Instrument :
 ECD_O
 ClientSampleId :
 AR1660CCC500



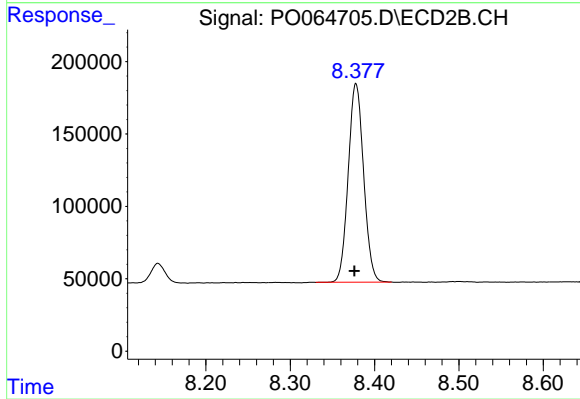
#1 Tetrachloro-m-xylene

R.T.: 3.455 min
 Delta R.T.: -0.001 min
 Response: 1345562
 Conc: 53.08 ng/ml



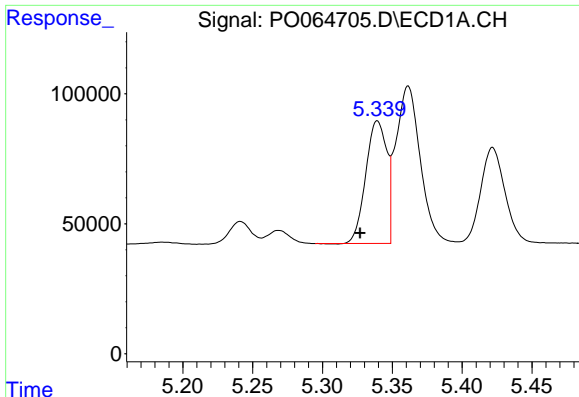
#2 Decachlorobiphenyl

R.T.: 9.706 min
 Delta R.T.: 0.019 min
 Response: 1375209
 Conc: 44.81 ng/ml



#2 Decachlorobiphenyl

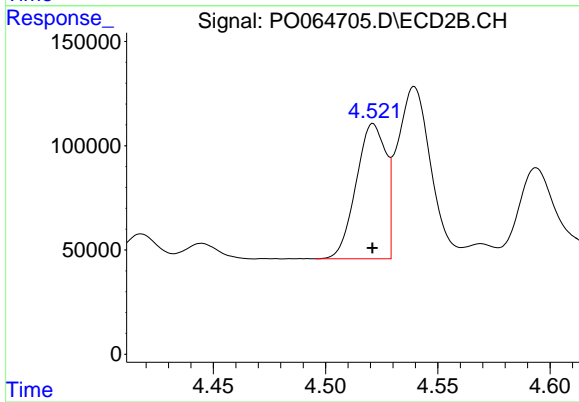
R.T.: 8.378 min
 Delta R.T.: 0.002 min
 Response: 1741583
 Conc: 50.15 ng/ml



#3 AR-1016-1

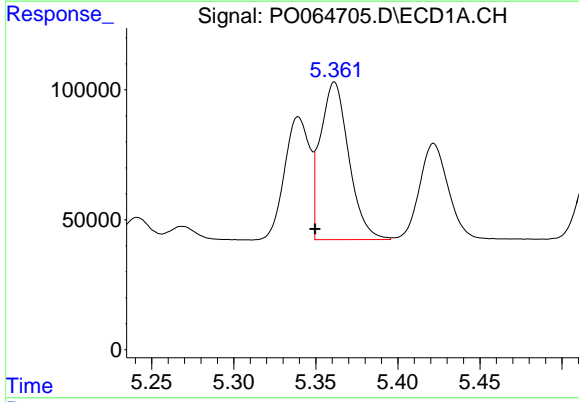
R.T.: 5.339 min
 Delta R.T.: 0.012 min
 Response: 493858
 Conc: 494.93 ng/ml

Instrument :
 ECD_O
 ClientSampleId :
 AR1660CCC500



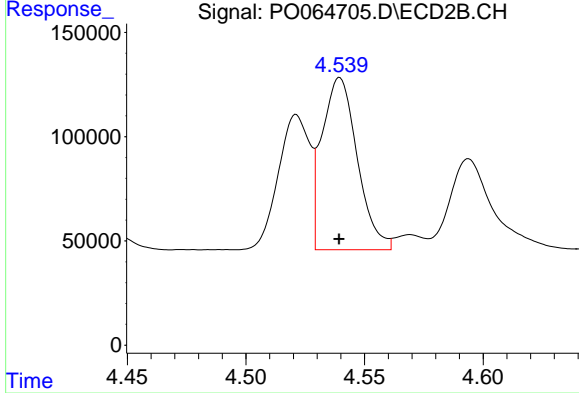
#3 AR-1016-1

R.T.: 4.521 min
 Delta R.T.: 0.000 min
 Response: 598254
 Conc: 553.18 ng/ml



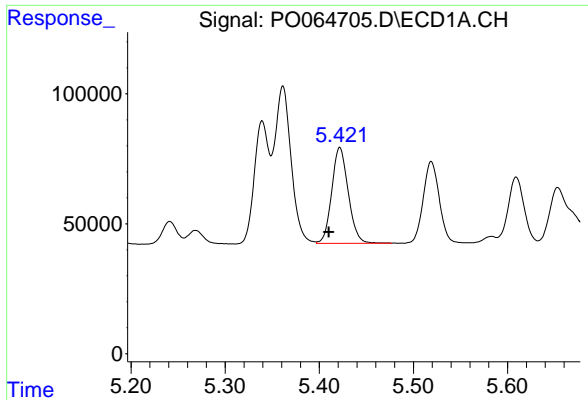
#4 AR-1016-2

R.T.: 5.361 min
 Delta R.T.: 0.011 min
 Response: 722174
 Conc: 497.27 ng/ml m



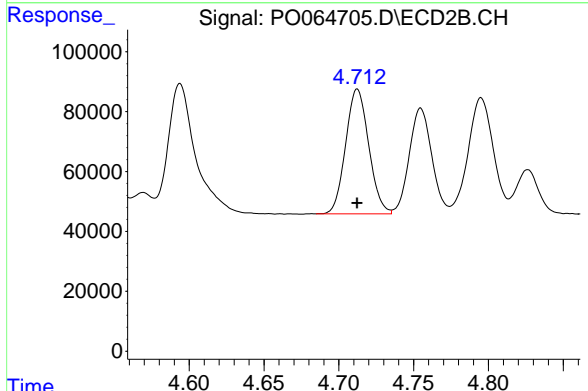
#4 AR-1016-2

R.T.: 4.540 min
 Delta R.T.: 0.000 min
 Response: 857074
 Conc: 569.91 ng/ml

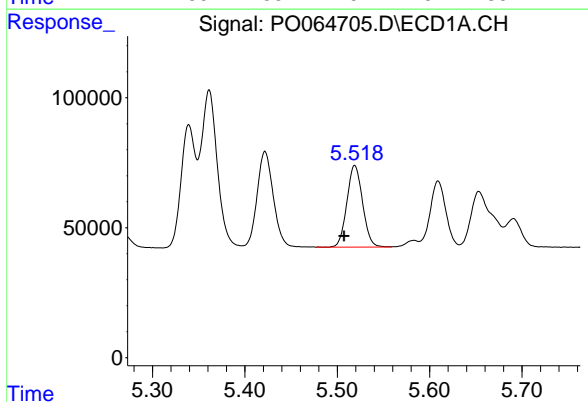


#5 AR-1016-3
 R.T.: 5.422 min
 Delta R.T.: 0.012 min
 Response: 448665
 Conc: 507.08 ng/ml

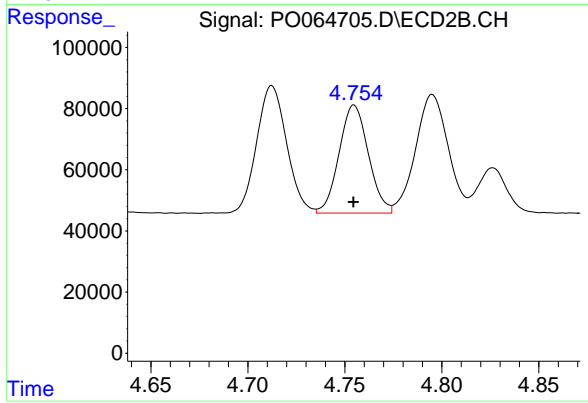
Instrument :
 ECD_O
ClientSampleId :
 AR1660CCC500



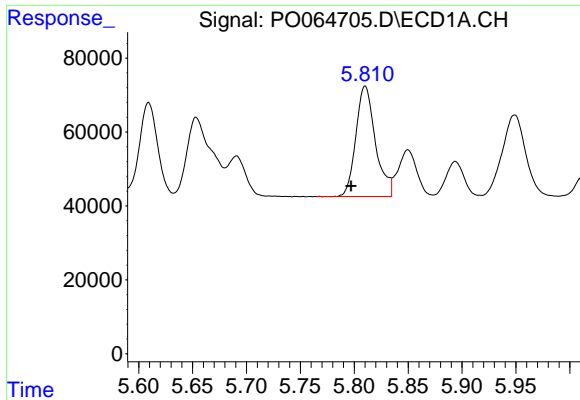
#5 AR-1016-3
 R.T.: 4.712 min
 Delta R.T.: 0.000 min
 Response: 448035
 Conc: 576.35 ng/ml



#6 AR-1016-4
 R.T.: 5.519 min
 Delta R.T.: 0.012 min
 Response: 370671
 Conc: 511.75 ng/ml



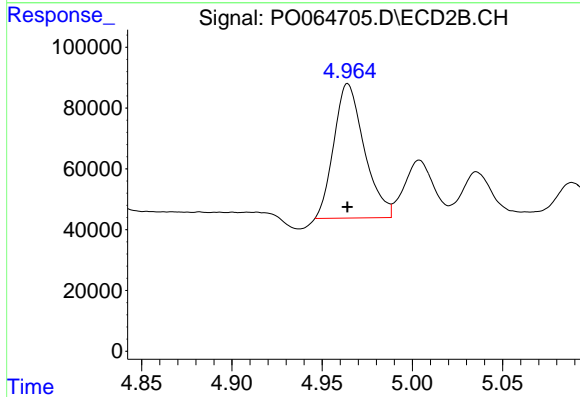
#6 AR-1016-4
 R.T.: 4.755 min
 Delta R.T.: 0.000 min
 Response: 371312
 Conc: 564.74 ng/ml



#7 AR-1016-5

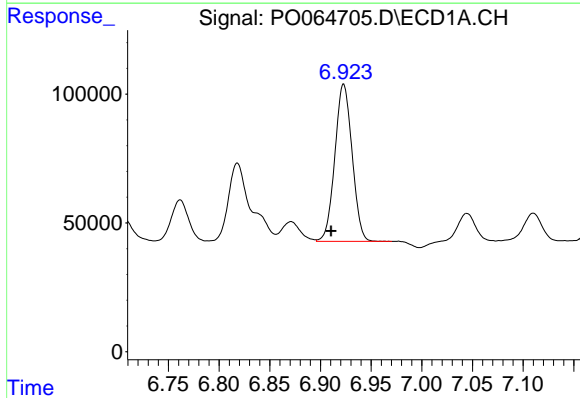
R.T.: 5.810 min
 Delta R.T.: 0.013 min
 Response: 378268
 Conc: 519.05 ng/ml

Instrument :
 ECD_O
 ClientSampleId :
 AR1660CCC500



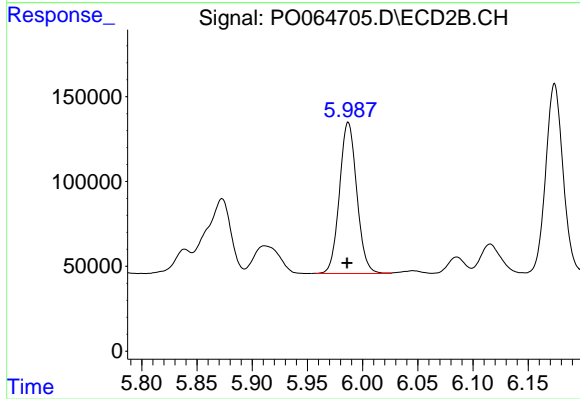
#7 AR-1016-5

R.T.: 4.964 min
 Delta R.T.: 0.000 min
 Response: 517549
 Conc: 593.14 ng/ml



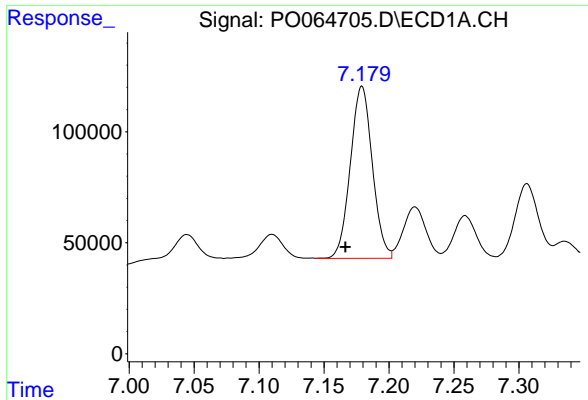
#31 AR-1260-1

R.T.: 6.923 min
 Delta R.T.: 0.012 min
 Response: 724770
 Conc: 471.76 ng/ml



#31 AR-1260-1

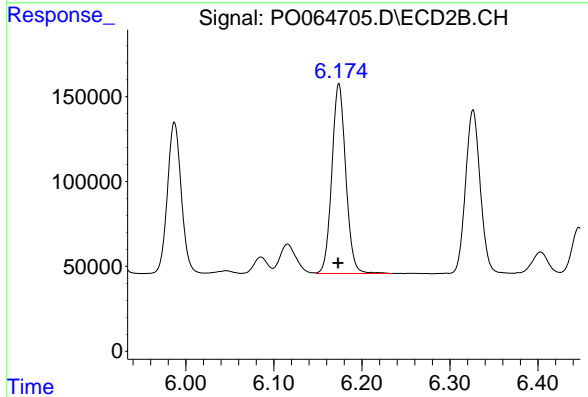
R.T.: 5.987 min
 Delta R.T.: 0.001 min
 Response: 974510
 Conc: 527.76 ng/ml



#32 AR-1260-2

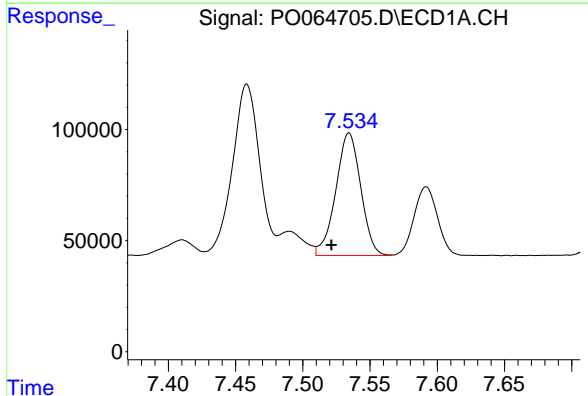
R.T.: 7.179 min
Delta R.T.: 0.013 min
Response: 913506
Conc: 462.77 ng/ml

Instrument :
ECD_O
ClientSampleId :
AR1660CCC500



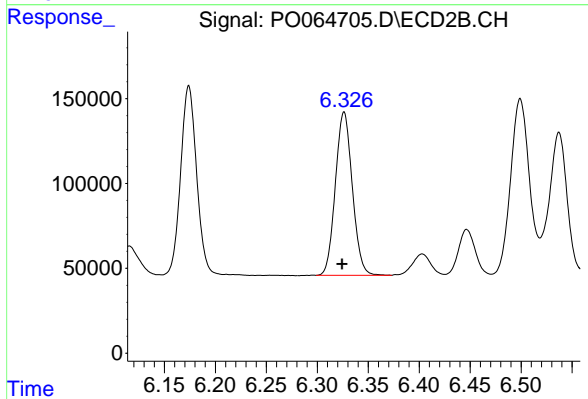
#32 AR-1260-2

R.T.: 6.174 min
Delta R.T.: 0.000 min
Response: 1228482
Conc: 528.01 ng/ml



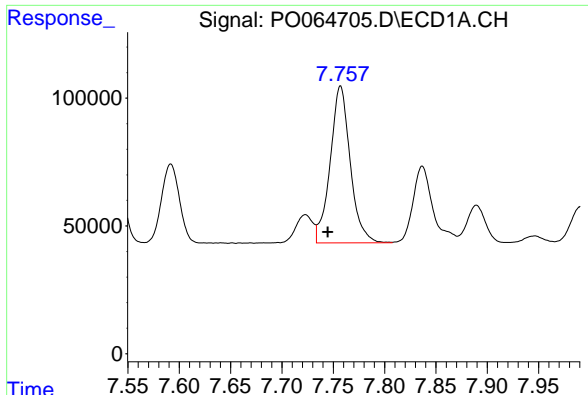
#33 AR-1260-3

R.T.: 7.534 min
Delta R.T.: 0.013 min
Response: 711168
Conc: 473.29 ng/ml



#33 AR-1260-3

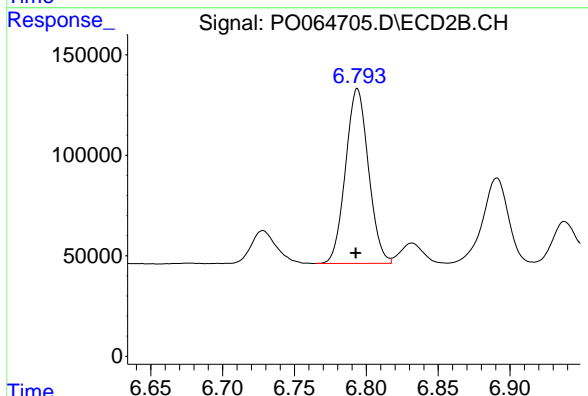
R.T.: 6.326 min
Delta R.T.: 0.002 min
Response: 1113103
Conc: 525.71 ng/ml



#34 AR-1260-4

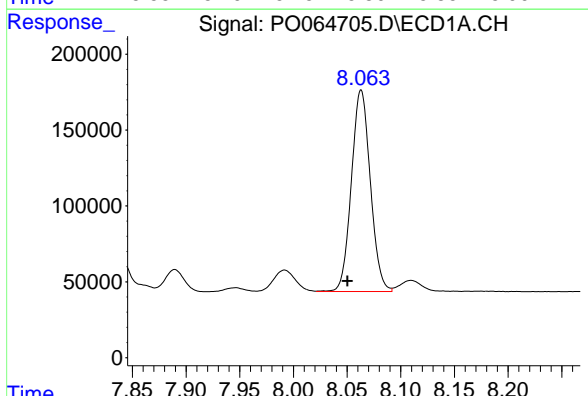
R.T.: 7.757 min
 Delta R.T.: 0.013 min
 Response: 833881
 Conc: 451.42 ng/ml

Instrument :
 ECD_O
 ClientSampled :
 AR1660CCC500



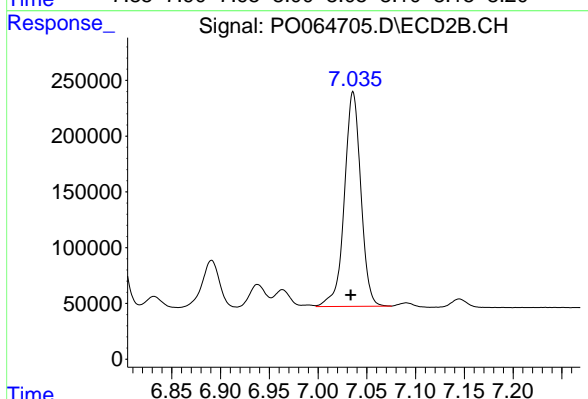
#34 AR-1260-4

R.T.: 6.794 min
 Delta R.T.: 0.001 min
 Response: 967417
 Conc: 513.52 ng/ml



#35 AR-1260-5

R.T.: 8.063 min
 Delta R.T.: 0.013 min
 Response: 1630989
 Conc: 437.06 ng/ml



#35 AR-1260-5

R.T.: 7.036 min
 Delta R.T.: 0.002 min
 Response: 2259347
 Conc: 481.73 ng/ml