

Data Path : Z:\pestpcbsrv\HPCHEM1\ECD_O\Data\PO121719\
 Data File : P0064771.D
 Signal(s) : Signal #1: ECD1A.CH Signal #2: ECD2B.CH
 Acq On : 17 Dec 2019 21:10
 Operator : SM/AJ
 Sample : AR1660CCC500
 Misc :
 ALS Vial : 3 Sample Multiplier: 1

Instrument :
 ECD_O
ClientSampleId :
 AR1660CCC500

Manual Integrations
APPROVED
 Ankita
 12/18/2019 9:26:01 AM

Integration File signal 1: autoint1.e
 Integration File signal 2: autoint2.e
 Quant Time: Dec 18 01:05:36 2019
 Quant Method : Z:\pestpcbsrv\HPCHEM1\ECD_O\methods\PO121319.M
 Quant Title : GC EXTRACTABLES
 QLast Update : Fri Dec 13 08:19:24 2019
 Response via : Initial Calibration
 Integrator: ChemStation 6890 Scale Mode: Small noise peaks clipped

Volume Inj. : 2 µl
 Signal #1 Phase : ZB-MR1 Signal #2 Phase: ZB-MR2
 Signal #1 Info : 30Mx0.32mmx 0.50µ Signal #2 Info : 30M x 0.32mm x 0.25µm

Compound	RT#1	RT#2	Resp#1	Resp#2	ng/ml	ng/ml

System Monitoring Compounds						
1) SA Tetrachlo...	4.180	3.455	1370599	1625139	56.299	64.110
2) SA Decachlor...	9.704	8.378	1312651	1673154	42.771	48.178
Target Compounds						
3) L1 AR-1016-1	5.333	4.519	578096	707596	579.352	654.282
4) L1 AR-1016-2	5.355	4.537	846887	1008411	583.143	670.539
5) L1 AR-1016-3	5.415	4.710	520978	532967	588.810	685.606
6) L1 AR-1016-4	5.512	4.752	426882	450959	589.354	685.879
7) L1 AR-1016-5	5.804	4.962	437396	568598	600.182	651.643m
31) L7 AR-1260-1	6.918	5.984	813729	1124234	529.665	608.846
32) L7 AR-1260-2	7.175	6.172	993294	1393505	503.189	598.943
33) L7 AR-1260-3	7.531	6.323	762979	1267480	507.769	598.625
34) L7 AR-1260-4	7.754	6.792	879128	1077035	475.919	571.706
35) L7 AR-1260-5	8.060	7.034	1642681	2405534	440.196	512.904

(f)=RT Delta > 1/2 Window (#)=Amounts differ by > 25% (m)=manual int.

Data Path : Z:\pestpcbsrv\HPCHEM1\ECD_O\Data\PO121719\
 Data File : PO064771.D
 Signal(s) : Signal #1: ECD1A.CH Signal #2: ECD2B.CH
 Acq On : 17 Dec 2019 21:10
 Operator : SM/AJ
 Sample : AR1660CCC500
 Misc :
 ALS Vial : 3 Sample Multiplier: 1

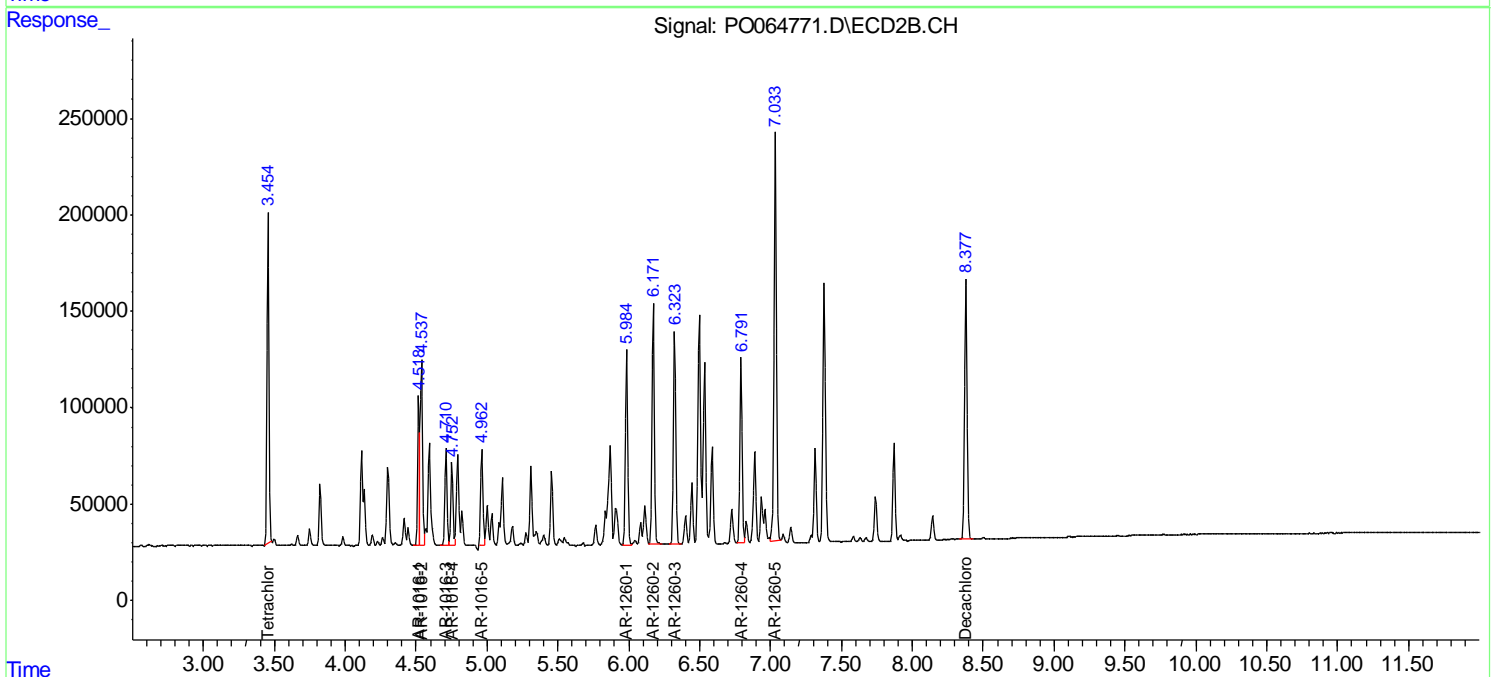
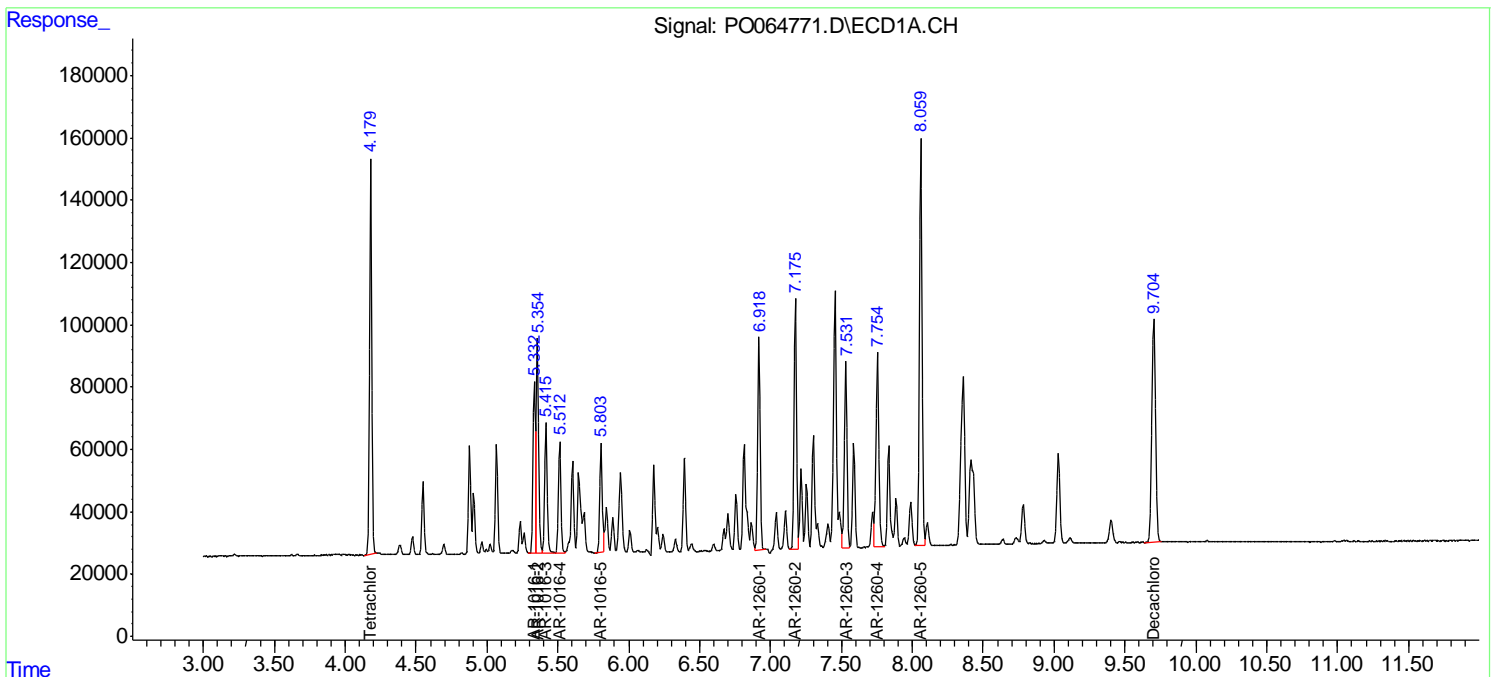
Instrument :
 ECD_O
 Client Sampled :
 AR1660CCC500

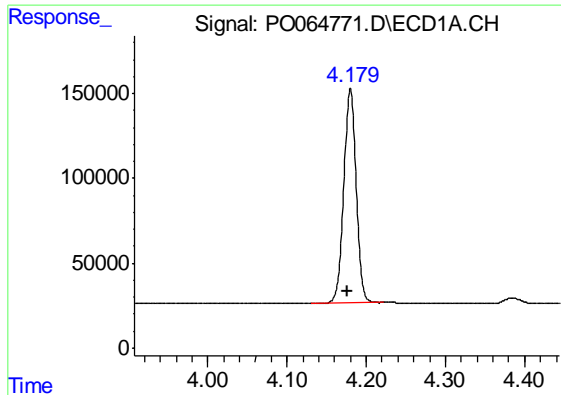
Manual Integrations
 APPROVED

Ankita
 12/18/2019 9:26:01 AM

Integration File signal 1: autoint1.e
 Integration File signal 2: autoint2.e
 Quant Time: Dec 18 01:05:36 2019
 Quant Method : Z:\pestpcbsrv\HPCHEM1\ECD_O\methods\PO121319.M
 Quant Title : GC EXTRACTABLES
 QLast Update : Fri Dec 13 08:19:24 2019
 Response via : Initial Calibration
 Integrator: ChemStation 6890 Scale Mode: Small noise peaks clipped

Volume Inj. : 2 µl
 Signal #1 Phase : ZB-MR1 Signal #2 Phase: ZB-MR2
 Signal #1 Info : 30Mx0.32mmx 0.50µ Signal #2 Info : 30M x 0.32mm x 0.25µm





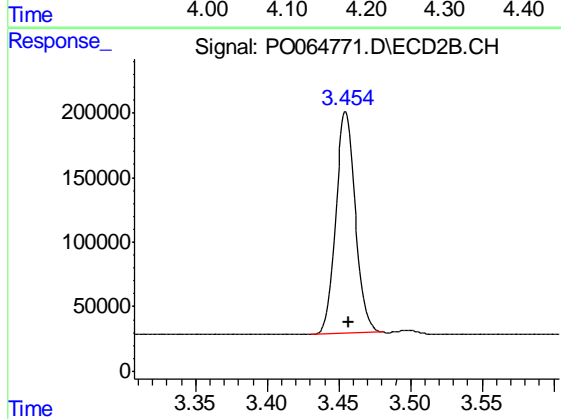
#1 Tetrachloro-m-xylene

R.T.: 4.180 min
 Delta R.T.: 0.003 min
 Response: 1370599
 Conc: 56.30 ng/ml

Instrument :
 ECD_O
 ClientSampleId :
 AR1660CCC500

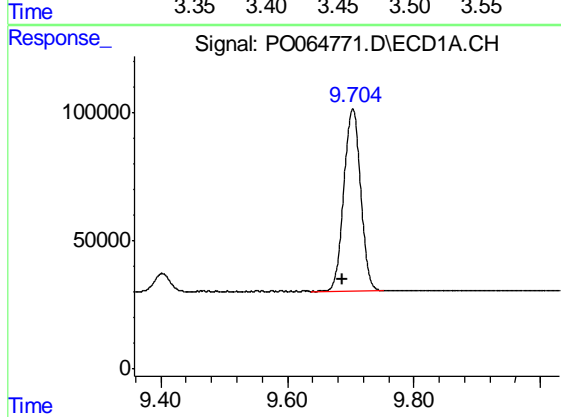
Manual Integrations
 APPROVED

Ankita
 12/18/2019 9:26:01 AM



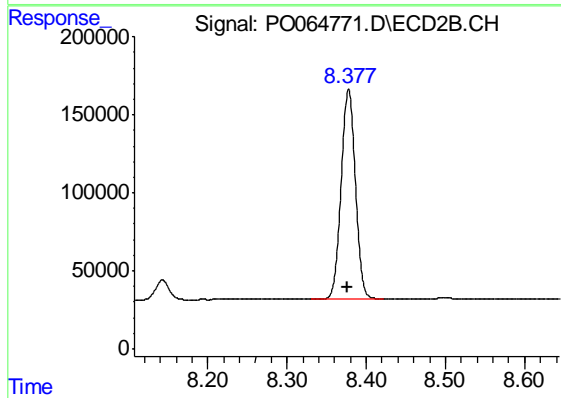
#1 Tetrachloro-m-xylene

R.T.: 3.455 min
 Delta R.T.: -0.002 min
 Response: 1625139
 Conc: 64.11 ng/ml



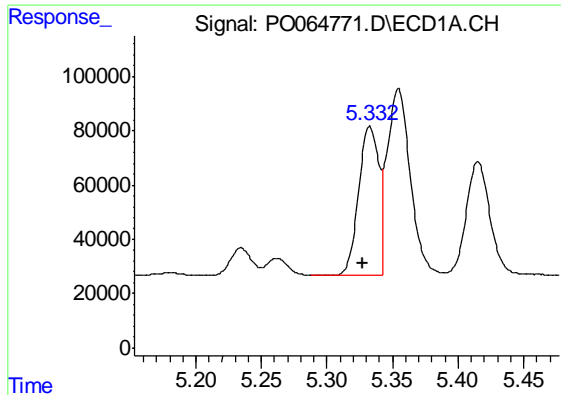
#2 Decachlorobiphenyl

R.T.: 9.704 min
 Delta R.T.: 0.016 min
 Response: 1312651
 Conc: 42.77 ng/ml



#2 Decachlorobiphenyl

R.T.: 8.378 min
 Delta R.T.: 0.001 min
 Response: 1673154
 Conc: 48.18 ng/ml



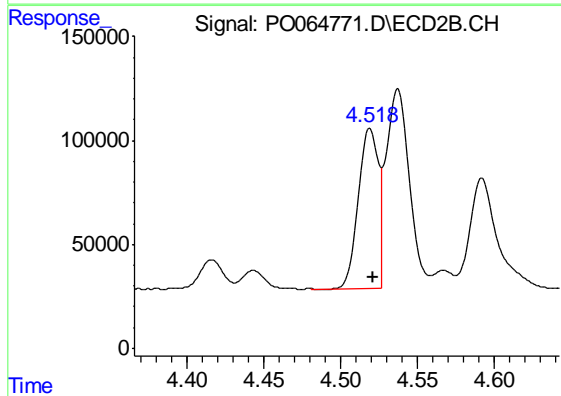
#3 AR-1016-1

R.T.: 5.333 min
 Delta R.T.: 0.006 min
 Response: 578096
 Conc: 579.35 ng/ml

Instrument :
 ECD_O
 ClientSampleId :
 AR1660CCC500

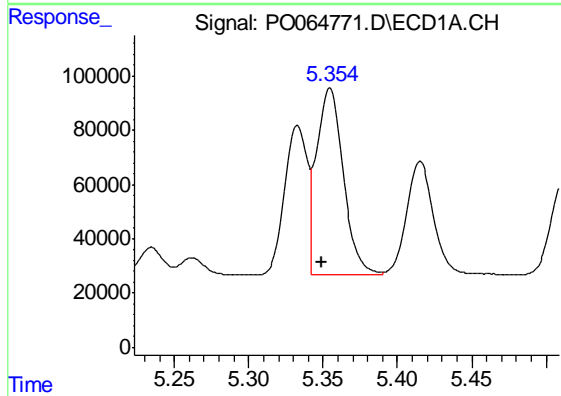
Manual Integrations
 APPROVED

Ankita
 12/18/2019 9:26:01 AM



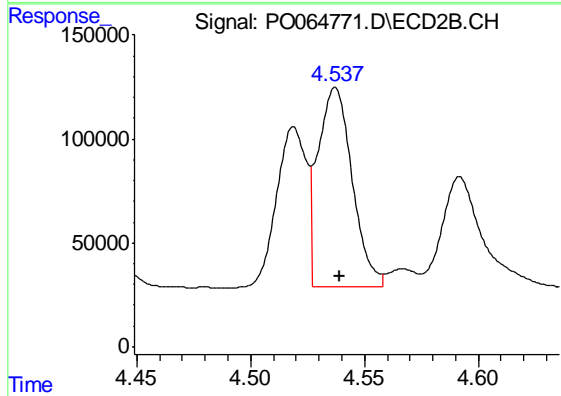
#3 AR-1016-1

R.T.: 4.519 min
 Delta R.T.: -0.002 min
 Response: 707596
 Conc: 654.28 ng/ml



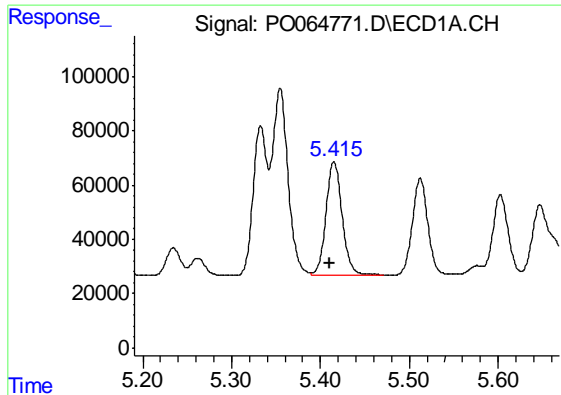
#4 AR-1016-2

R.T.: 5.355 min
 Delta R.T.: 0.005 min
 Response: 846887
 Conc: 583.14 ng/ml



#4 AR-1016-2

R.T.: 4.537 min
 Delta R.T.: -0.002 min
 Response: 1008411
 Conc: 670.54 ng/ml



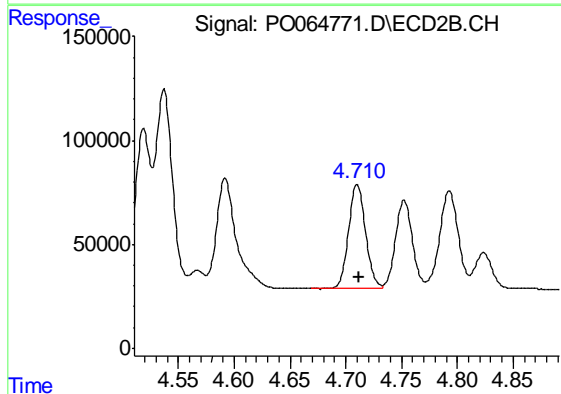
#5 AR-1016-3

R.T.: 5.415 min
 Delta R.T.: 0.005 min
 Response: 520978
 Conc: 588.81 ng/ml

Instrument :
 ECD_O
 ClientSampleId :
 AR1660CCC500

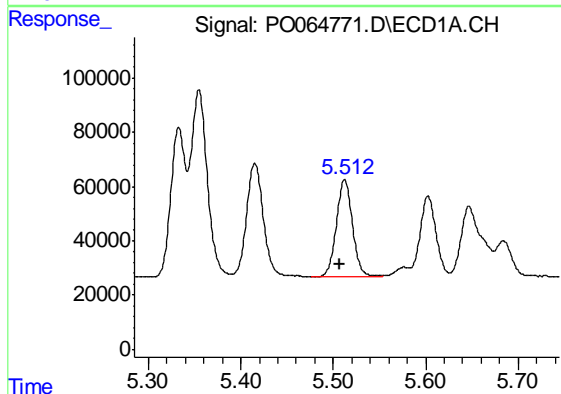
Manual Integrations
 APPROVED

Ankita
 12/18/2019 9:26:01 AM



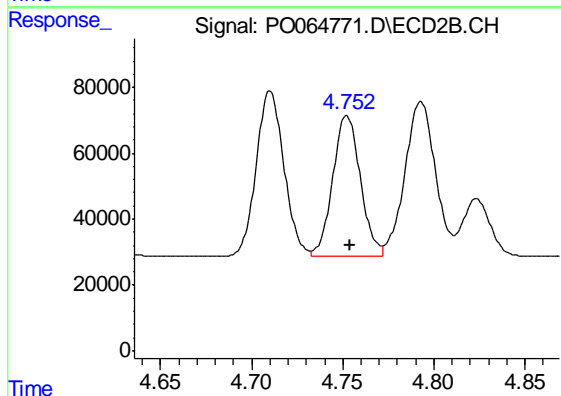
#5 AR-1016-3

R.T.: 4.710 min
 Delta R.T.: -0.002 min
 Response: 532967
 Conc: 685.61 ng/ml



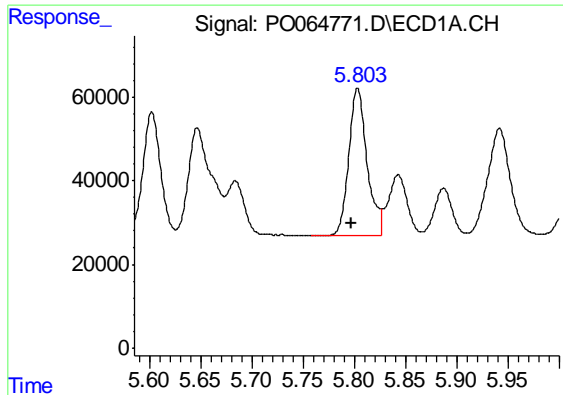
#6 AR-1016-4

R.T.: 5.512 min
 Delta R.T.: 0.005 min
 Response: 426882
 Conc: 589.35 ng/ml



#6 AR-1016-4

R.T.: 4.752 min
 Delta R.T.: -0.002 min
 Response: 450959
 Conc: 685.88 ng/ml



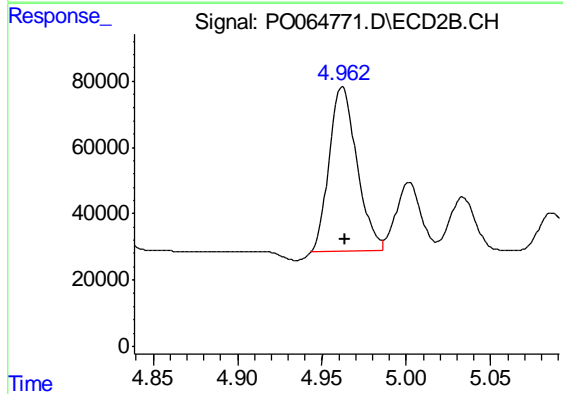
#7 AR-1016-5

R.T.: 5.804 min
 Delta R.T.: 0.006 min
 Response: 437396
 Conc: 600.18 ng/ml

Instrument :
 ECD_O
 ClientSampleId :
 AR1660CCC500

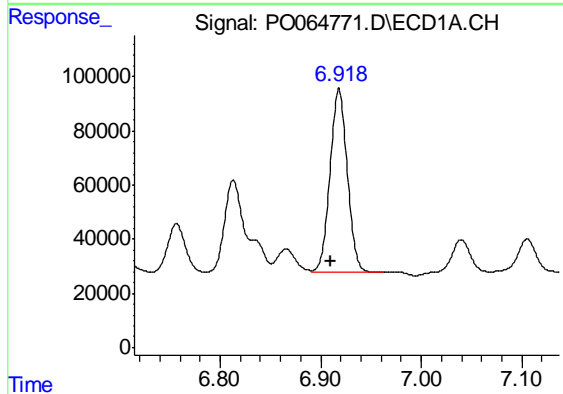
Manual Integrations
 APPROVED

Ankita
 12/18/2019 9:26:01 AM



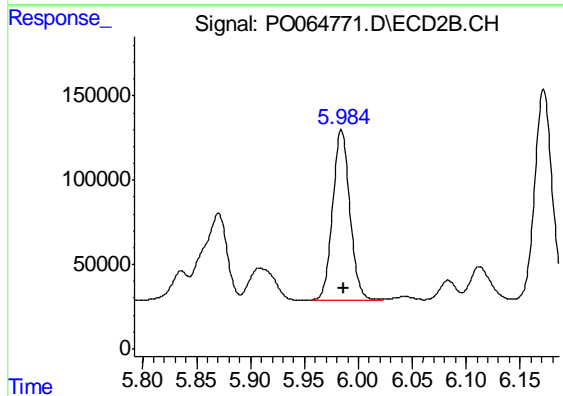
#7 AR-1016-5

R.T.: 4.962 min
 Delta R.T.: -0.002 min
 Response: 568598
 Conc: 651.64 ng/ml m



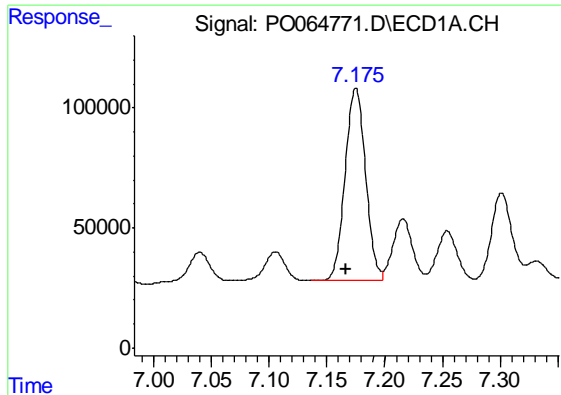
#31 AR-1260-1

R.T.: 6.918 min
 Delta R.T.: 0.008 min
 Response: 813729
 Conc: 529.67 ng/ml



#31 AR-1260-1

R.T.: 5.984 min
 Delta R.T.: -0.002 min
 Response: 1124234
 Conc: 608.85 ng/ml



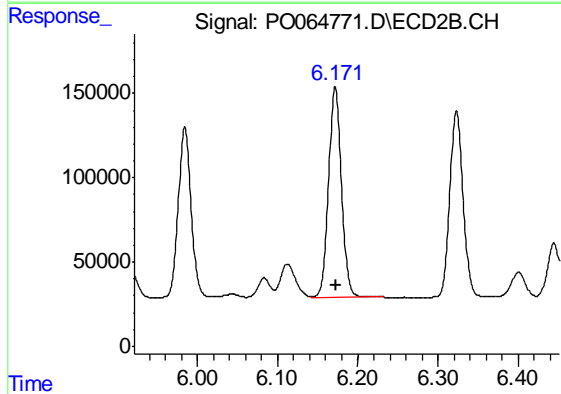
#32 AR-1260-2

R.T.: 7.175 min
Delta R.T.: 0.008 min
Response: 993294
Conc: 503.19 ng/ml

Instrument :
ECD_O
ClientSampleId :
AR1660CCC500

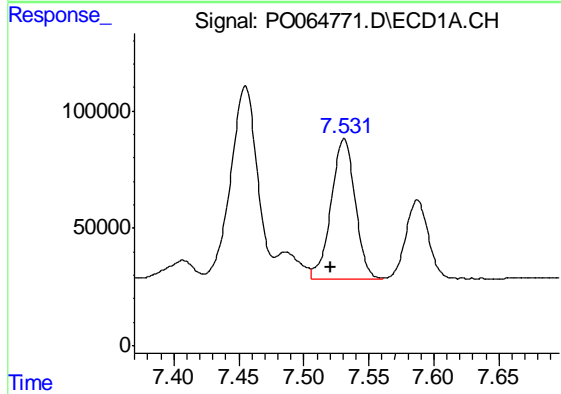
Manual Integrations
APPROVED

Ankita
12/18/2019 9:26:01 AM



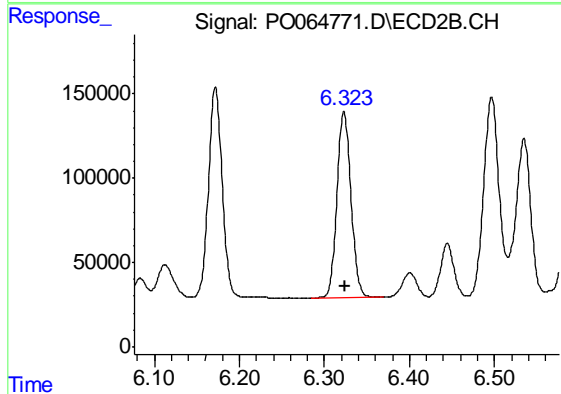
#32 AR-1260-2

R.T.: 6.172 min
Delta R.T.: -0.001 min
Response: 1393505
Conc: 598.94 ng/ml



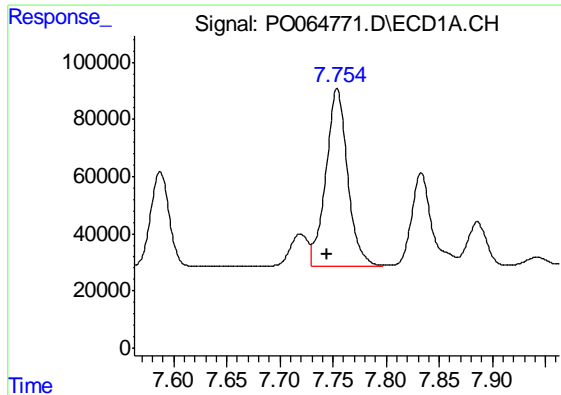
#33 AR-1260-3

R.T.: 7.531 min
Delta R.T.: 0.010 min
Response: 762979
Conc: 507.77 ng/ml



#33 AR-1260-3

R.T.: 6.323 min
Delta R.T.: -0.001 min
Response: 1267480
Conc: 598.62 ng/ml



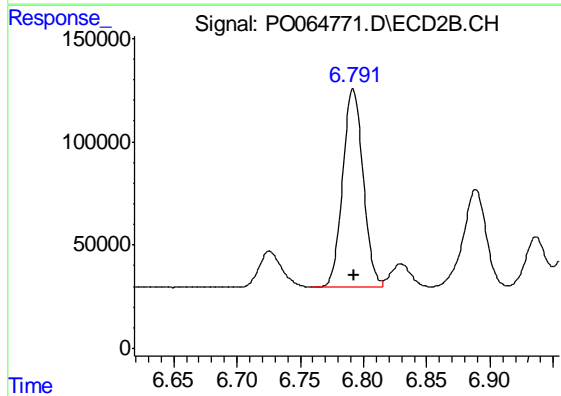
#34 AR-1260-4

R.T.: 7.754 min
 Delta R.T.: 0.009 min
 Response: 879128
 Conc: 475.92 ng/ml

Instrument :
 ECD_O
 ClientSampleId :
 AR1660CCC500

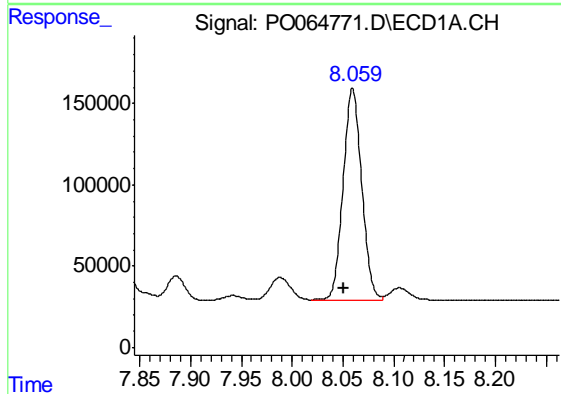
Manual Integrations
 APPROVED

Ankita
 12/18/2019 9:26:01 AM



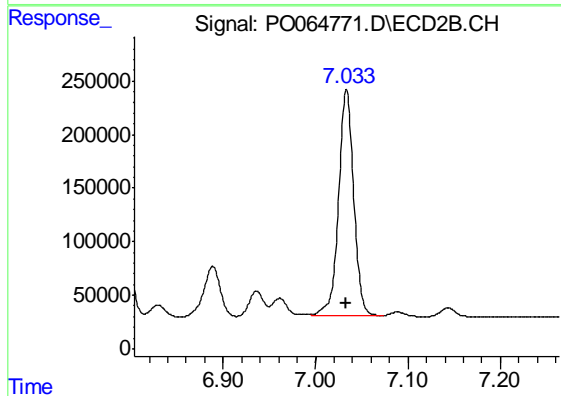
#34 AR-1260-4

R.T.: 6.792 min
 Delta R.T.: 0.000 min
 Response: 1077035
 Conc: 571.71 ng/ml



#35 AR-1260-5

R.T.: 8.060 min
 Delta R.T.: 0.009 min
 Response: 1642681
 Conc: 440.20 ng/ml



#35 AR-1260-5

R.T.: 7.034 min
 Delta R.T.: 0.000 min
 Response: 2405534
 Conc: 512.90 ng/ml