

Data Path : Z:\pestpcbsrv\HPCHEM1\ECD_0\Data\P0122419\
 Data File : P0064924.D
 Signal(s) : Signal #1: ECD1A.CH Signal #2: ECD2B.CH
 Acq On : 24 Dec 2019 16:08
 Operator : SM/AJ
 Sample : I.BLK
 Misc :
 ALS Vial : 2 Sample Multiplier: 1

Instrument :
 ECD_0
 ClientSampleId :
 I.BLK

Integration File signal 1: autoint1.e
 Integration File signal 2: autoint2.e
 Quant Time: Dec 25 04:10:47 2019
 Quant Method : Z:\pestpcbsrv\HPCHEM1\ECD_0\methods\P0121319.M
 Quant Title : GC EXTRACTABLES
 QLast Update : Fri Dec 13 08:19:24 2019
 Response via : Initial Calibration
 Integrator: ChemStation 6890 Scale Mode: Small noise peaks clipped

Volume Inj. : 2 µl
 Signal #1 Phase : ZB-MR1 Signal #2 Phase: ZB-MR2
 Signal #1 Info : 30Mx0.32mmx 0.50µ Signal #2 Info : 30M x 0.32mm x 0.25µm

Compound	RT#1	RT#2	Resp#1	Resp#2	ng/ml	ng/ml

System Monitoring Compounds						
1) SA Tetrachlo...	4.181	3.454	457804	624094	18.805	24.620 #
2) SA Decachlor...	9.697	8.369	598276	784569	19.494	22.591
Target Compounds						
20) L4 AR-1242-5	6.179	0.000	41185	0	59.094	N.D. #
24) L5 AR-1248-4	6.179	0.000	41185	0	31.581	N.D. #
25) L5 AR-1248-5	6.179	0.000	41185	0	33.097	N.D. #
26) L6 AR-1254-1	6.179	0.000	41185	0	32.339	N.D. #
28) L6 AR-1254-3	6.761	0.000	32028	0	13.413	N.D. #
29) L6 AR-1254-4	7.037	0.000	31621	0	16.910	N.D. #

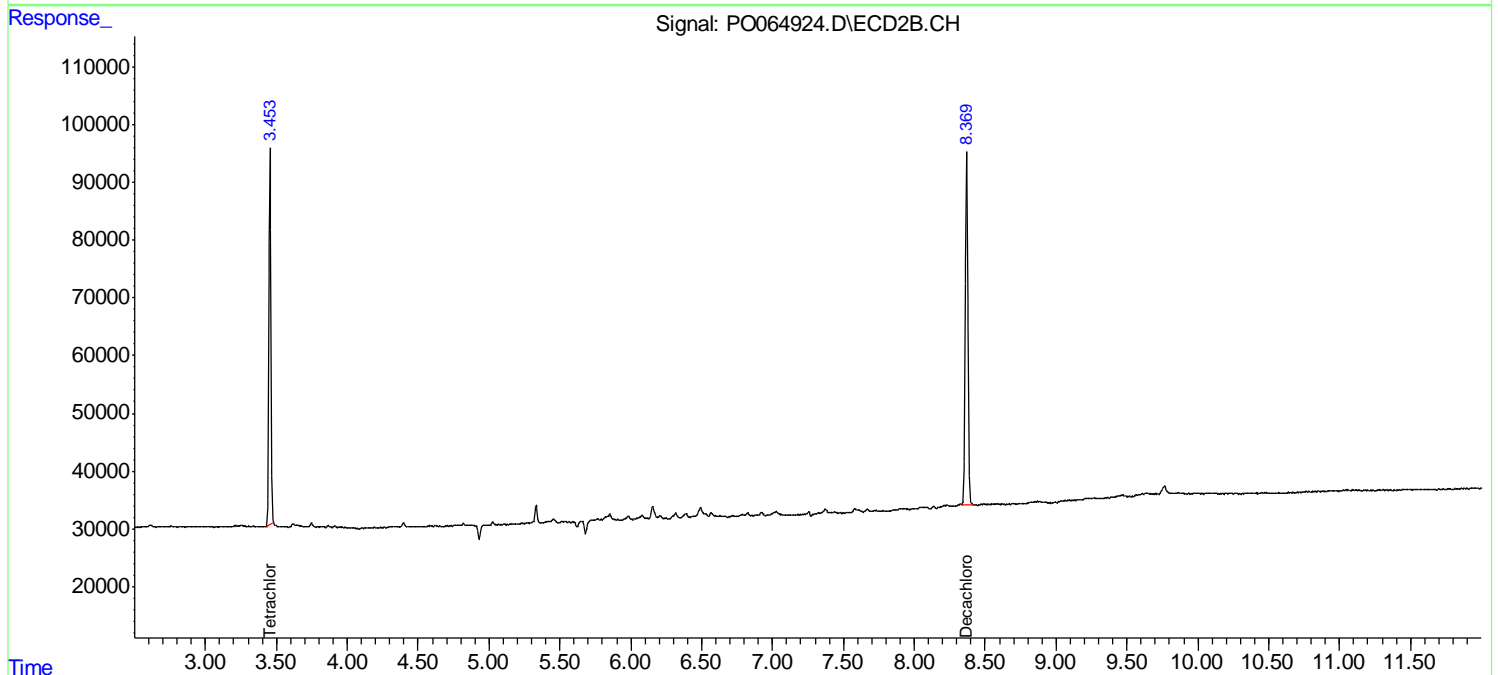
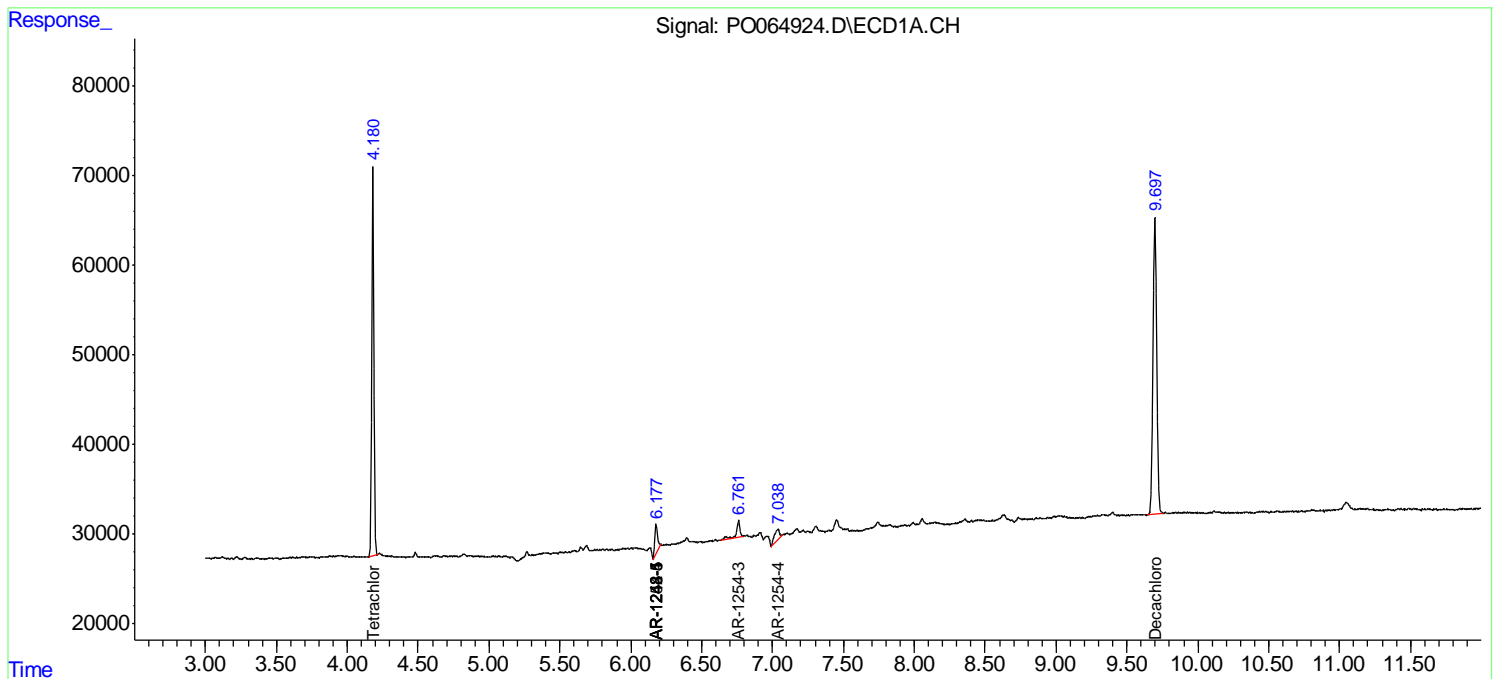
(f)=RT Delta > 1/2 Window (#)=Amounts differ by > 25% (m)=manual int.

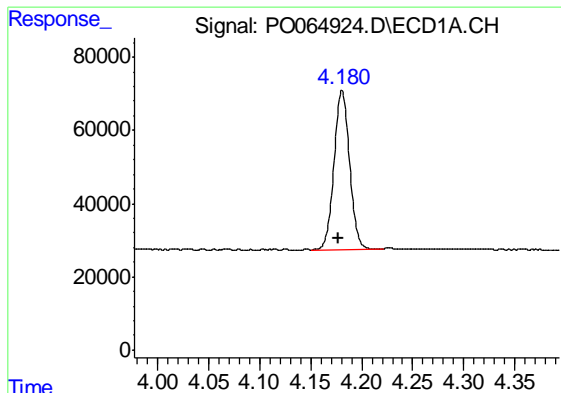
Data Path : Z:\pestpcbsrv\HPCHEM1\ECD_O\Data\PO122419\
 Data File : PO064924.D
 Signal(s) : Signal #1: ECD1A.CH Signal #2: ECD2B.CH
 Acq On : 24 Dec 2019 16:08
 Operator : SM/AJ
 Sample : I.BLK
 Misc :
 ALS Vial : 2 Sample Multiplier: 1

Instrument :
 ECD_O
 ClientSampled :
 I.BLK

Integration File signal 1: autoint1.e
 Integration File signal 2: autoint2.e
 Quant Time: Dec 25 04:10:47 2019
 Quant Method : Z:\pestpcbsrv\HPCHEM1\ECD_O\methods\PO121319.M
 Quant Title : GC EXTRACTABLES
 QLast Update : Fri Dec 13 08:19:24 2019
 Response via : Initial Calibration
 Integrator: ChemStation 6890 Scale Mode: Small noise peaks clipped

Volume Inj. : 2 µl
 Signal #1 Phase : ZB-MR1 Signal #2 Phase: ZB-MR2
 Signal #1 Info : 30Mx0.32mmx 0.50µ Signal #2 Info : 30M x 0.32mm x 0.25µm

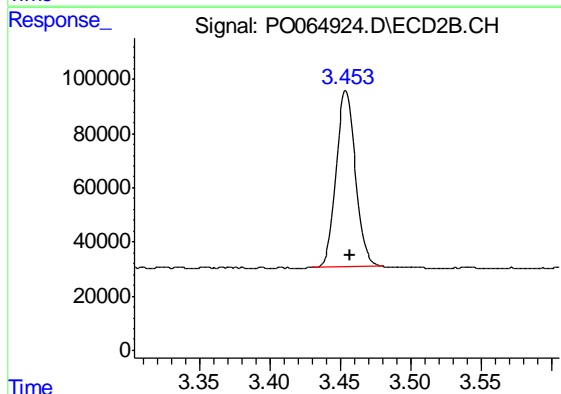




#1 Tetrachloro-m-xylene

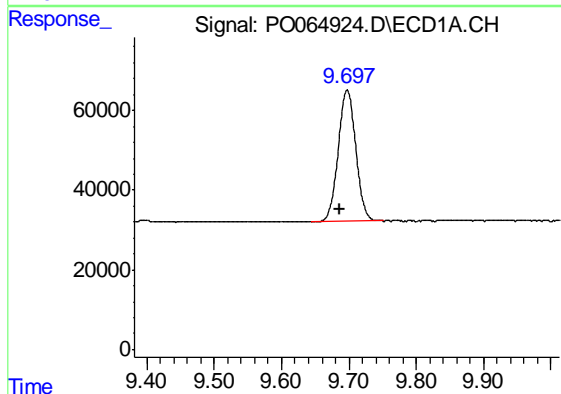
R.T.: 4.181 min
 Delta R.T.: 0.004 min
 Response: 457804
 Conc: 18.80 ng/ml

Instrument :
 ECD_O
 ClientSampleId :
 I.BLK



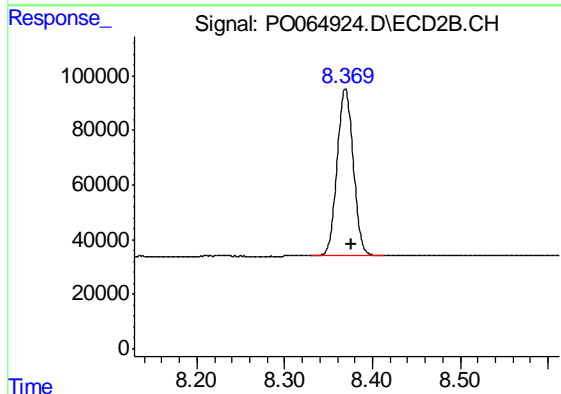
#1 Tetrachloro-m-xylene

R.T.: 3.454 min
 Delta R.T.: -0.003 min
 Response: 624094
 Conc: 24.62 ng/ml



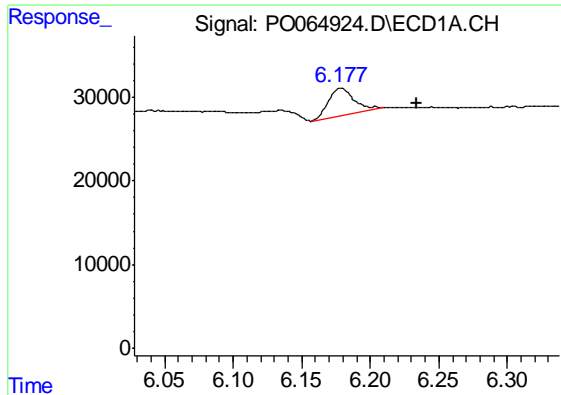
#2 Decachlorobiphenyl

R.T.: 9.697 min
 Delta R.T.: 0.010 min
 Response: 598276
 Conc: 19.49 ng/ml



#2 Decachlorobiphenyl

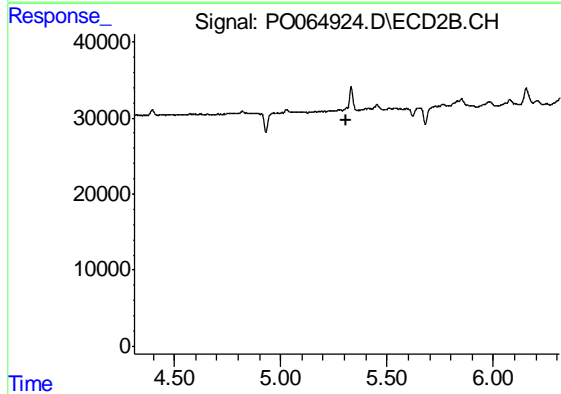
R.T.: 8.369 min
 Delta R.T.: -0.007 min
 Response: 784569
 Conc: 22.59 ng/ml



#20 AR-1242-5

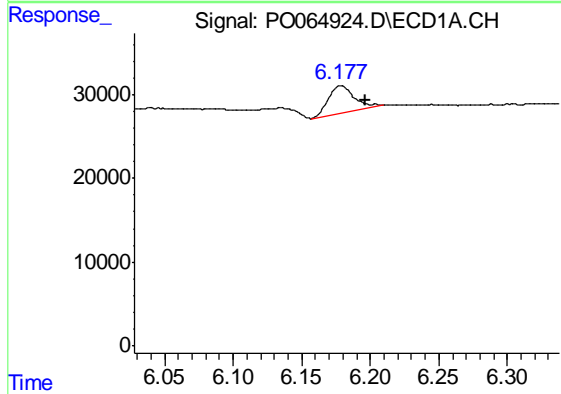
R.T.: 6.179 min
 Delta R.T.: -0.055 min
 Response: 41185
 Conc: 59.09 ng/ml

Instrument :
 ECD_O
 ClientSampled :
 I.BLK



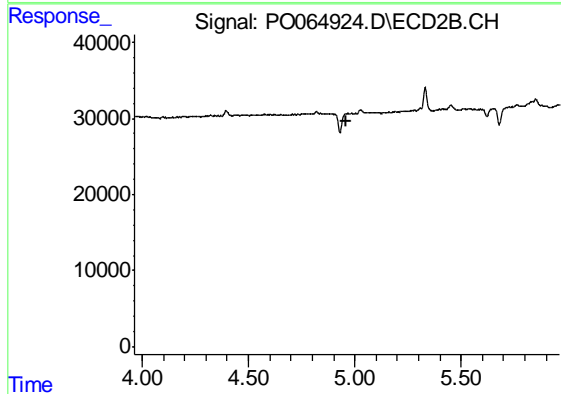
#20 AR-1242-5

R.T.: 0.000 min
 Exp R.T. : 5.312 min
 Response: 0
 Conc: N.D.



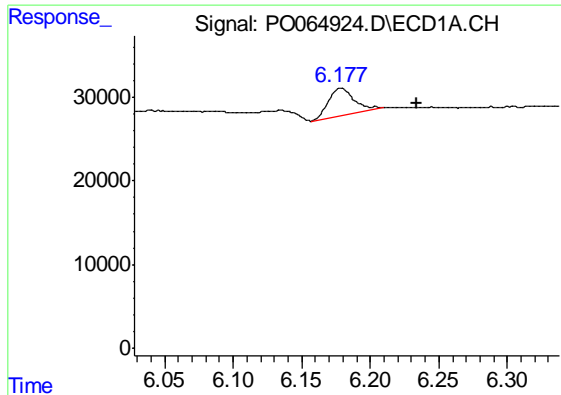
#24 AR-1248-4

R.T.: 6.179 min
 Delta R.T.: -0.018 min
 Response: 41185
 Conc: 31.58 ng/ml



#24 AR-1248-4

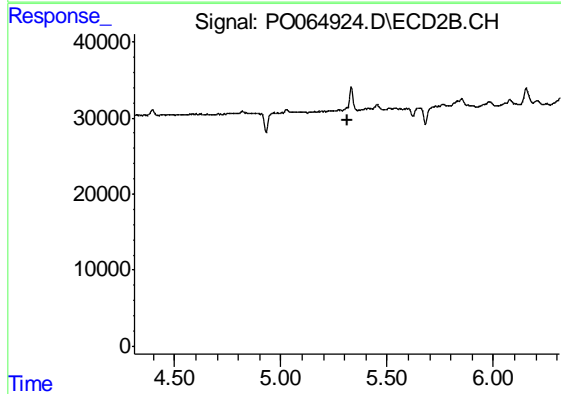
R.T.: 0.000 min
 Exp R.T. : 4.963 min
 Response: 0
 Conc: N.D.



#25 AR-1248-5

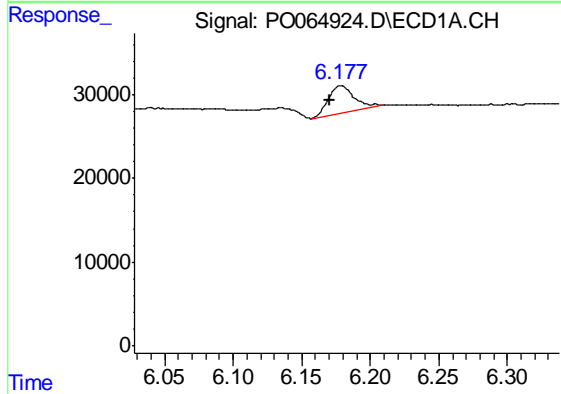
R.T.: 6.179 min
 Delta R.T.: -0.056 min
 Response: 41185
 Conc: 33.10 ng/ml

Instrument :
 ECD_O
 ClientSampled :
 I.BLK



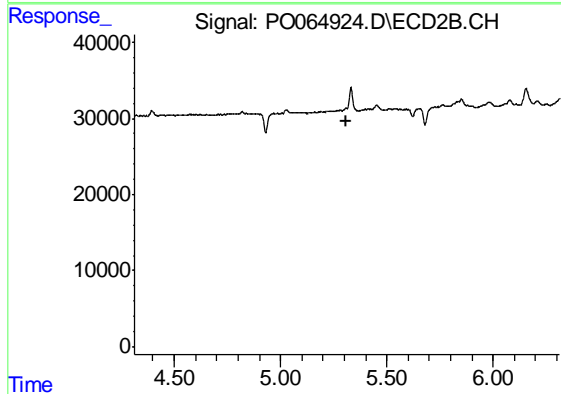
#25 AR-1248-5

R.T.: 0.000 min
 Exp R.T. : 5.311 min
 Response: 0
 Conc: N.D.



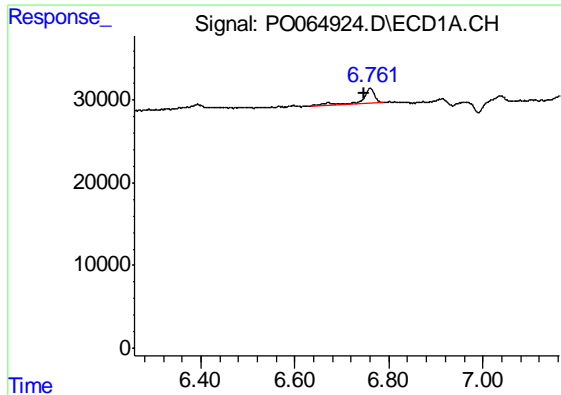
#26 AR-1254-1

R.T.: 6.179 min
 Delta R.T.: 0.009 min
 Response: 41185
 Conc: 32.34 ng/ml



#26 AR-1254-1

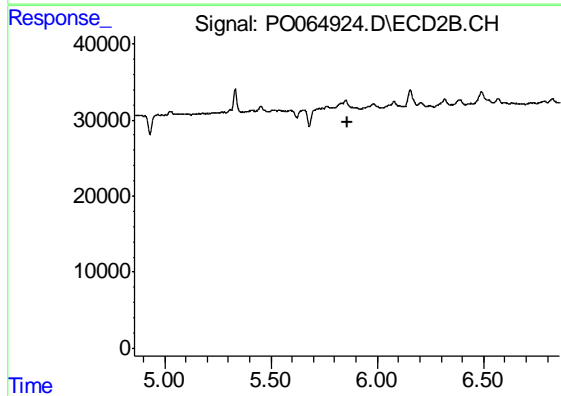
R.T.: 0.000 min
 Exp R.T. : 5.312 min
 Response: 0
 Conc: N.D.



#28 AR-1254-3

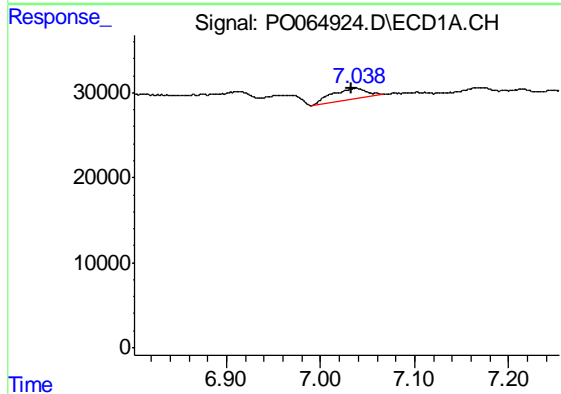
R.T.: 6.761 min
 Delta R.T.: 0.013 min
 Response: 32028
 Conc: 13.41 ng/ml

Instrument :
 ECD_O
 ClientSampled :
 I.BLK



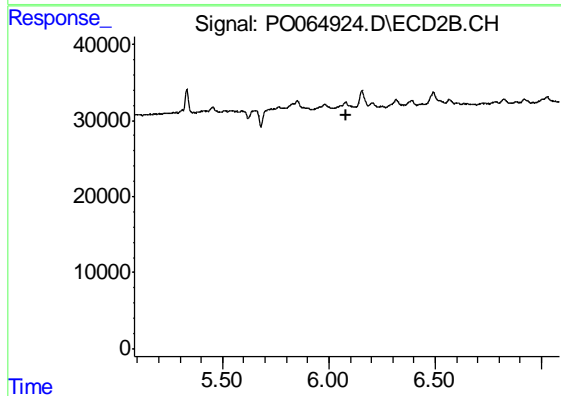
#28 AR-1254-3

R.T.: 0.000 min
 Exp R.T. : 5.858 min
 Response: 0
 Conc: N.D.



#29 AR-1254-4

R.T.: 7.037 min
 Delta R.T.: 0.005 min
 Response: 31621
 Conc: 16.91 ng/ml



#29 AR-1254-4

R.T.: 0.000 min
 Exp R.T. : 6.085 min
 Response: 0
 Conc: N.D.