

Data Path : Z:\pestpcbsrv\HPCHEM1\ECD_P\Data\PP010421\
 Data File : PP032543.D
 Signal(s) : Signal #1: ECD1A.CH Signal #2: ECD2B.CH
 Acq On : 04 Jan 2021 20:13
 Operator : DD\AJ
 Sample : AR1248ICC050
 Misc :
 ALS Vial : 19 Sample Multiplier: 1

Instrument :
 ECD_P
ClientSampleId :
 AR1248ICC050

Manual Integrations
APPROVED

Ankita
 1/5/2021 1:52:39 PM

Integration File signal 1: autoint1.e
 Integration File signal 2: autoint2.e
 Quant Time: Jan 05 05:52:51 2021
 Quant Method : Z:\pestpcbsrv\HPCHEM1\ECD_P\methods\PP010421.M
 Quant Title : GC EXTRACTABLES
 QLast Update : Tue Jan 05 05:44:45 2021
 Response via : Initial Calibration
 Integrator: ChemStation 6890 Scale Mode: Small noise peaks clipped

Volume Inj. : 2 µl
 Signal #1 Phase : ZB-MR1 Signal #2 Phase: ZB-MR2
 Signal #1 Info : 30Mx0.32mmx 0.50µ Signal #2 Info : 30M x 0.32mm x 0.25µm

Compound	RT#1	RT#2	Resp#1	Resp#2	ng/ml	ng/ml

System Monitoring Compounds						
1) SA Tetrachlo...	4.748	4.033	324265	268104	5.548	5.208
2) SA Decachlor...	10.586	9.319	265625	248577	5.781	5.494
Target Compounds						
21) L5 AR-1248-1	6.050	5.284	60421	49940	56.567	52.578
22) L5 AR-1248-2	6.344	5.546	78145	71242	56.329m	55.905
23) L5 AR-1248-3	6.558	5.590	98239	74626	56.956	54.474
24) L5 AR-1248-4	6.983	5.774	107944	86064	56.748	51.884
25) L5 AR-1248-5	7.023	6.196	105547	85624	55.244	52.555

(f)=RT Delta > 1/2 Window (#)=Amounts differ by > 25% (m)=manual int.

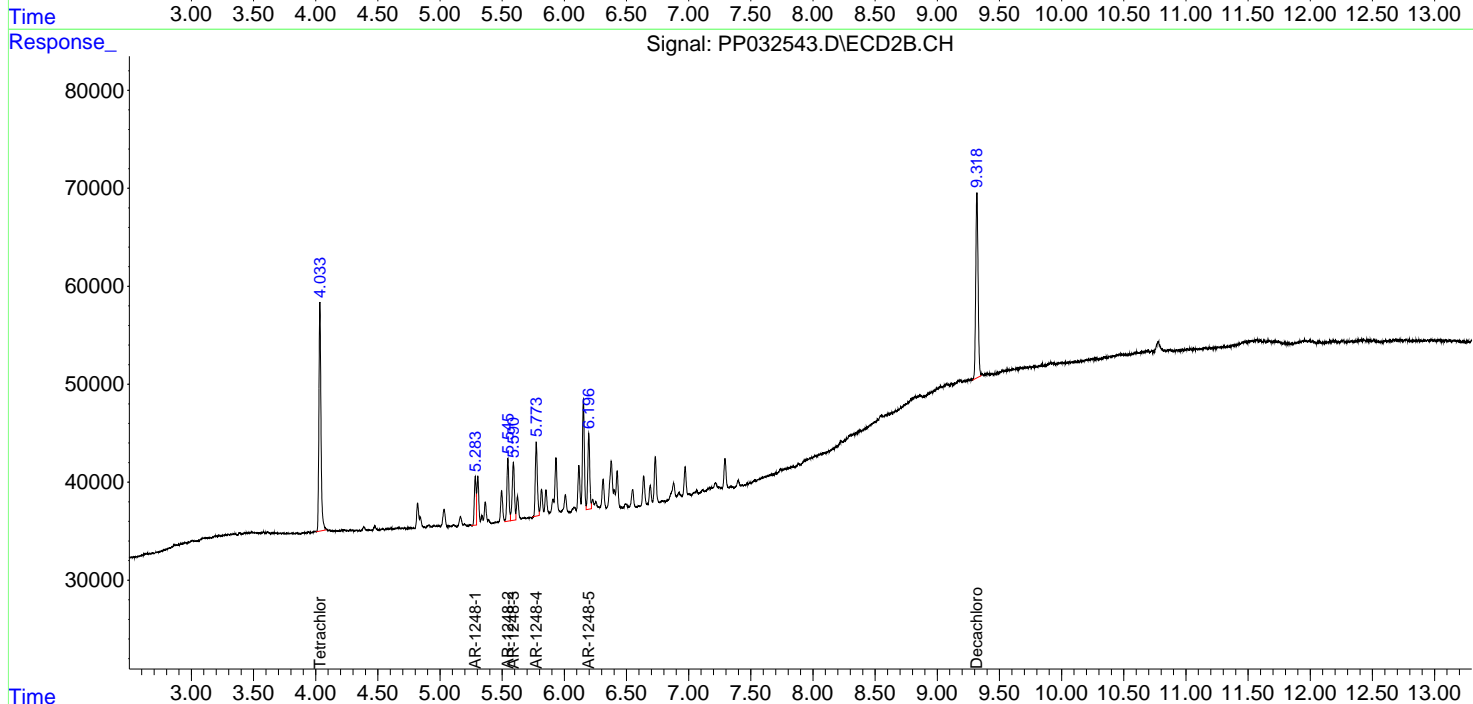
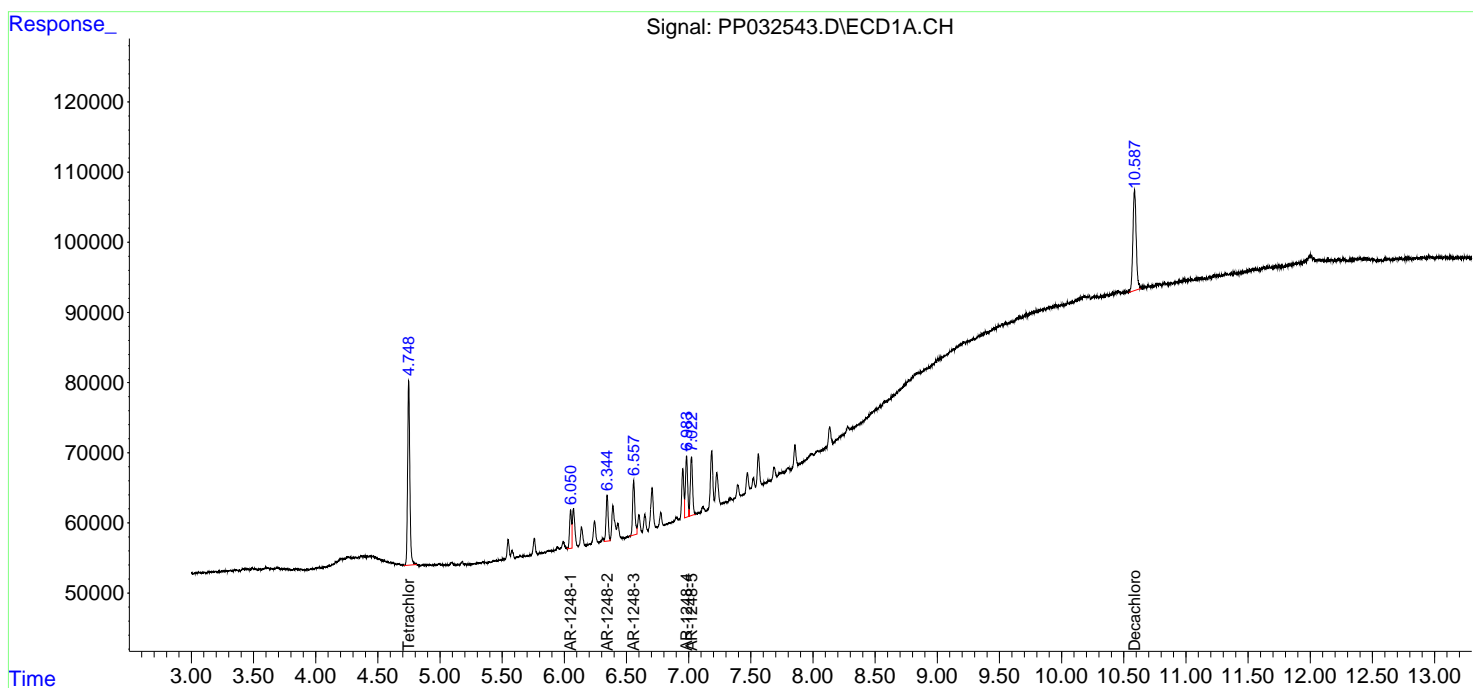
Data Path : Z:\pestpcbsrv\HPCHEM1\ECD_P\Data\PP010421\
 Data File : PP032543.D
 Signal(s) : Signal #1: ECD1A.CH Signal #2: ECD2B.CH
 Acq On : 04 Jan 2021 20:13
 Operator : DD\AJ
 Sample : AR1248ICC050
 Misc :
 ALS Vial : 19 Sample Multiplier: 1

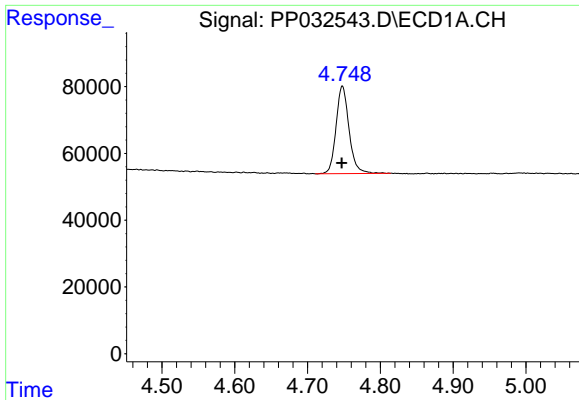
Instrument :
 ECD_P
Client Sampled :
 AR1248ICC050

Manual Integrations
APPROVED
 Ankita
 1/5/2021 1:52:39 PM

Integration File signal 1: autoint1.e
 Integration File signal 2: autoint2.e
 Quant Time: Jan 05 05:52:51 2021
 Quant Method : Z:\pestpcbsrv\HPCHEM1\ECD_P\methods\PP010421.M
 Quant Title : GC EXTRACTABLES
 QLast Update : Tue Jan 05 05:44:45 2021
 Response via : Initial Calibration
 Integrator: ChemStation 6890 Scale Mode: Small noise peaks clipped

Volume Inj. : 2 µl
 Signal #1 Phase : ZB-MR1 Signal #2 Phase: ZB-MR2
 Signal #1 Info : 30Mx0.32mmx 0.50µ Signal #2 Info : 30M x 0.32mm x 0.25µm

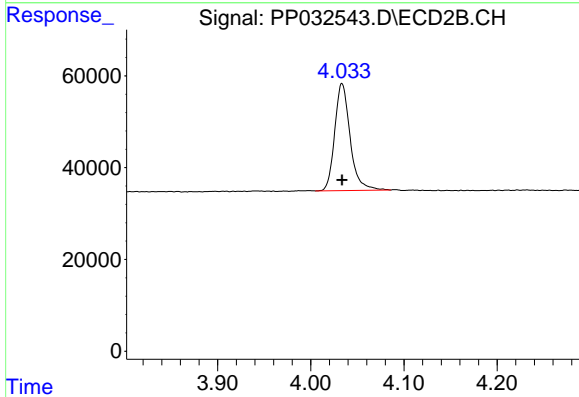




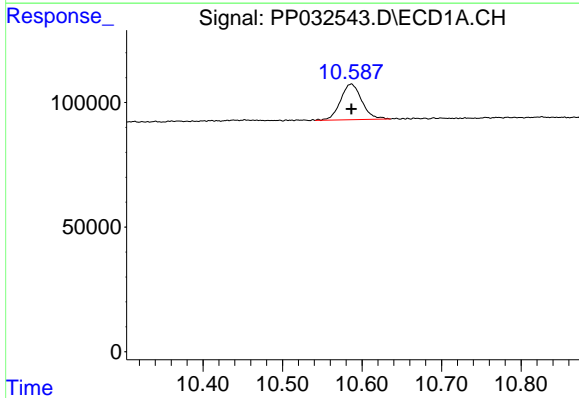
#1 Tetrachloro-m-xylene
 R.T.: 4.748 min
 Delta R.T.: 0.000 min
 Response: 324265
 Conc: 5.55 ng/ml

Instrument :
 ECD_P
ClientSampled :
 AR1248ICC050

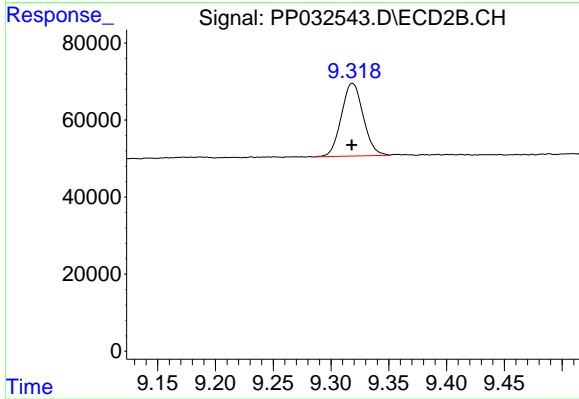
Manual Integrations
APPROVED
 Ankita
 1/5/2021 1:52:39 PM



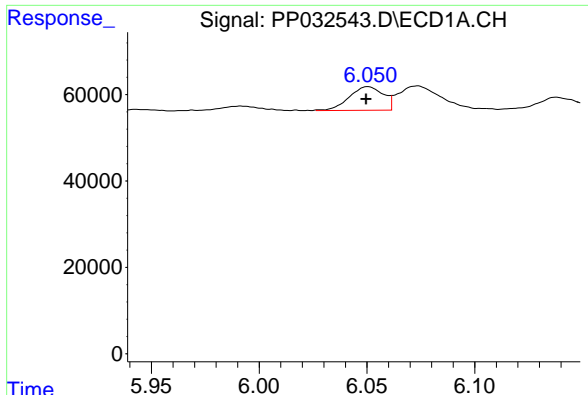
#1 Tetrachloro-m-xylene
 R.T.: 4.033 min
 Delta R.T.: 0.000 min
 Response: 268104
 Conc: 5.21 ng/ml



#2 Decachlorobiphenyl
 R.T.: 10.586 min
 Delta R.T.: 0.000 min
 Response: 265625
 Conc: 5.78 ng/ml



#2 Decachlorobiphenyl
 R.T.: 9.319 min
 Delta R.T.: 0.000 min
 Response: 248577
 Conc: 5.49 ng/ml

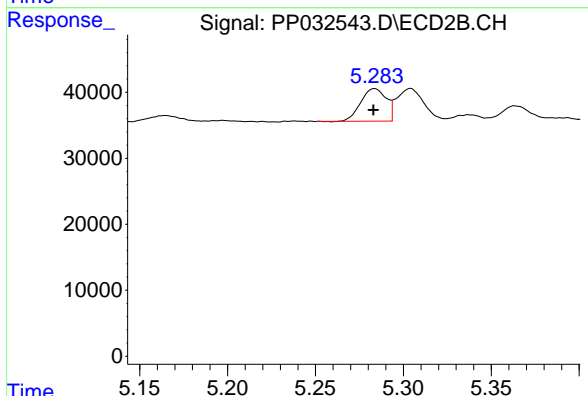


#21 AR-1248-1

R.T.: 6.050 min
 Delta R.T.: 0.000 min
 Response: 60421
 Conc: 56.57 ng/ml

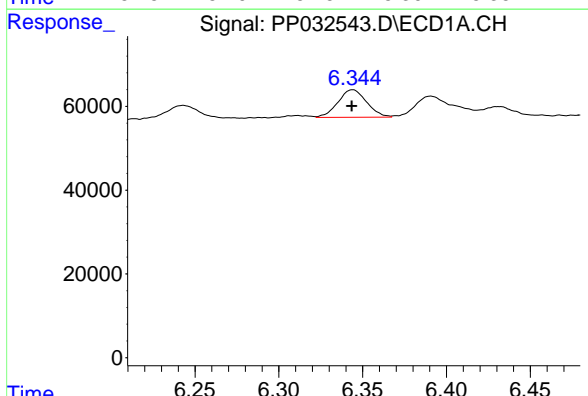
Instrument :
 ECD_P
ClientSampled :
 AR1248ICC050

Manual Integrations
APPROVED
 Ankita
 1/5/2021 1:52:39 PM



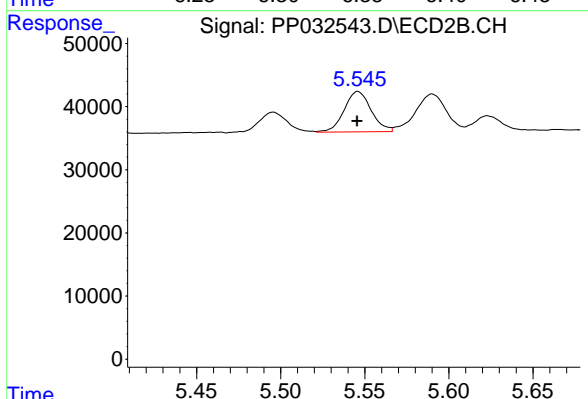
#21 AR-1248-1

R.T.: 5.284 min
 Delta R.T.: 0.000 min
 Response: 49940
 Conc: 52.58 ng/ml



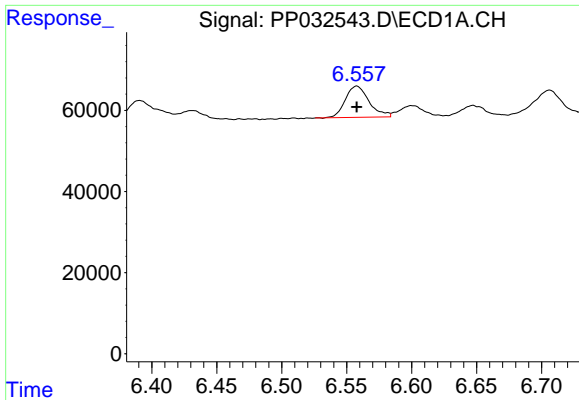
#22 AR-1248-2

R.T.: 6.344 min
 Delta R.T.: 0.000 min
 Response: 78145
 Conc: 56.33 ng/ml m



#22 AR-1248-2

R.T.: 5.546 min
 Delta R.T.: 0.000 min
 Response: 71242
 Conc: 55.90 ng/ml

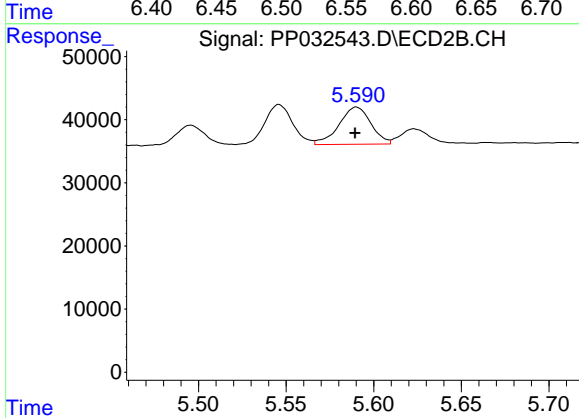


#23 AR-1248-3

R.T.: 6.558 min
 Delta R.T.: 0.000 min
 Response: 98239
 Conc: 56.96 ng/ml

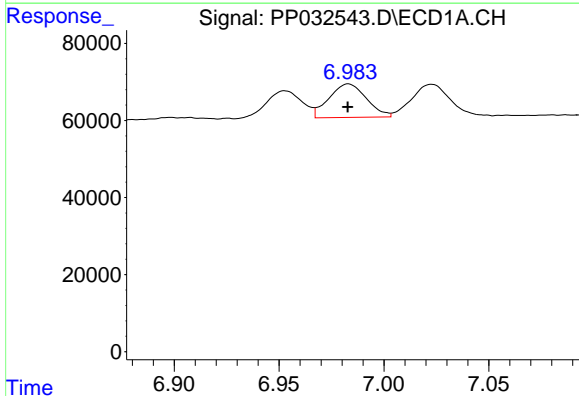
Instrument :
 ECD_P
ClientSampled :
 AR1248ICC050

Manual Integrations
APPROVED
 Ankita
 1/5/2021 1:52:39 PM



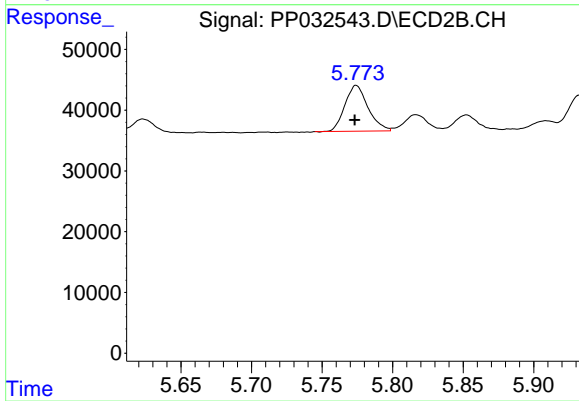
#23 AR-1248-3

R.T.: 5.590 min
 Delta R.T.: 0.000 min
 Response: 74626
 Conc: 54.47 ng/ml



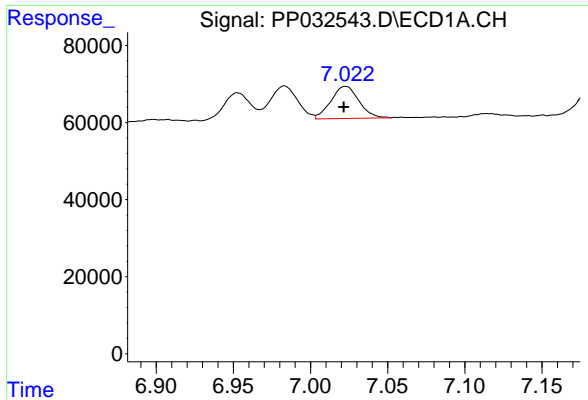
#24 AR-1248-4

R.T.: 6.983 min
 Delta R.T.: 0.000 min
 Response: 107944
 Conc: 56.75 ng/ml



#24 AR-1248-4

R.T.: 5.774 min
 Delta R.T.: 0.001 min
 Response: 86064
 Conc: 51.88 ng/ml



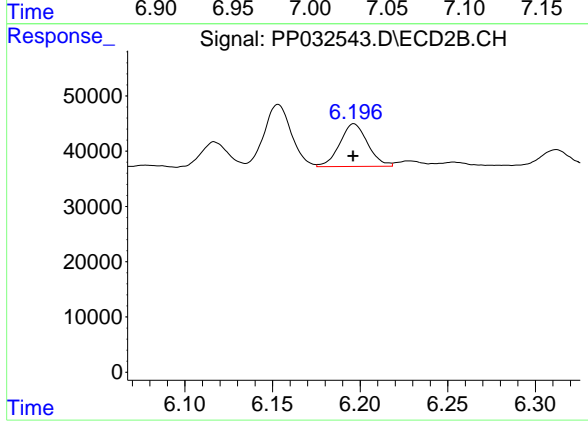
#25 AR-1248-5

R.T.: 7.023 min
Delta R.T.: 0.001 min
Response: 105547
Conc: 55.24 ng/ml

Instrument :
ECD_P
ClientSampleId :
AR1248ICC050

Manual Integrations
APPROVED

Ankita
1/5/2021 1:52:39 PM



#25 AR-1248-5

R.T.: 6.196 min
Delta R.T.: 0.000 min
Response: 85624
Conc: 52.56 ng/ml