

Data Path : Z:\pestpcbsrv\HPCHEM1\ECD_P\Data\PP010422\
 Data File : PP042490.D
 Signal(s) : Signal #1: ECD1A.CH Signal #2: ECD2B.CH
 Acq On : 04 Jan 2022 21:46
 Operator : AJ\MA
 Sample : AR1248ICC750
 Misc :
 ALS Vial : 16 Sample Multiplier: 1

Instrument :
 ECD_P
 ClientSampleId :
 AR1248ICC750

Integration File signal 1: autoint1.e
 Integration File signal 2: autoint2.e
 Quant Time: Jan 05 04:04:43 2022
 Quant Method : Z:\pestpcbsrv\HPCHEM1\ECD_P\methods\PP010422.M
 Quant Title : GC EXTRACTABLES
 QLast Update : Wed Jan 05 03:48:00 2022
 Response via : Initial Calibration
 Integrator: ChemStation 6890 Scale Mode: Small noise peaks clipped

Volume Inj. : 2 µl
 Signal #1 Phase : ZB-MR1 Signal #2 Phase: ZB-MR2
 Signal #1 Info : 30Mx0.32mmx 0.50µ Signal #2 Info : 30M x 0.32mm x 0.25µm

Compound	RT#1	RT#2	Resp#1	Resp#2	ng/ml	ng/ml

System Monitoring Compounds						
1) SA Tetrachlo...	4.880	4.047	1513811	2059499	75.430	75.664
2) SA Decachlor...	10.814	9.387	866997	1448397	74.632	74.871
Target Compounds						
21) L5 AR-1248-1	6.183	5.314	251427	444775	743.009	756.174
22) L5 AR-1248-2	6.478	5.579	348602	599230	751.086	751.592
23) L5 AR-1248-3	6.693	5.624	416946	641010	748.794	751.456
24) L5 AR-1248-4	7.117	5.810	405772	743241	750.500	746.109
25) L5 AR-1248-5	7.157	6.235	395909	727704	749.433	753.757

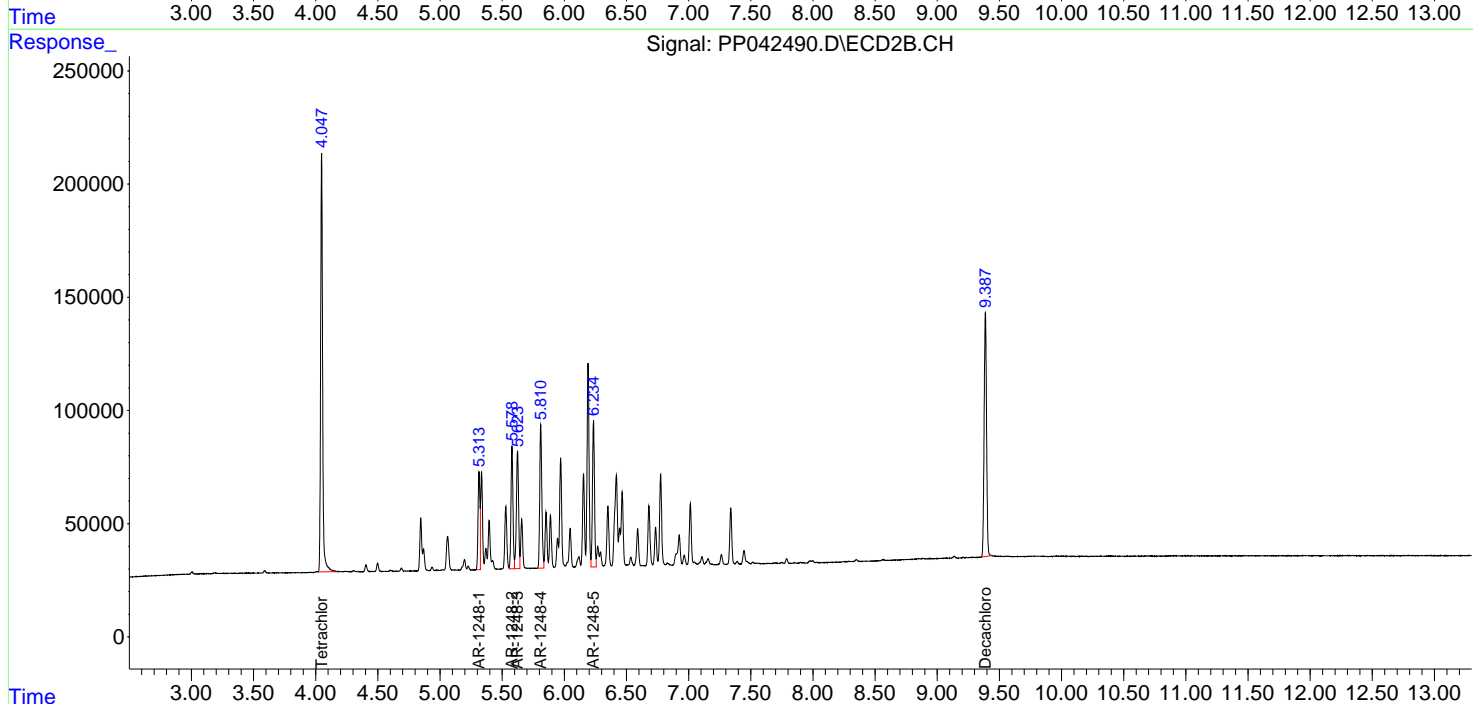
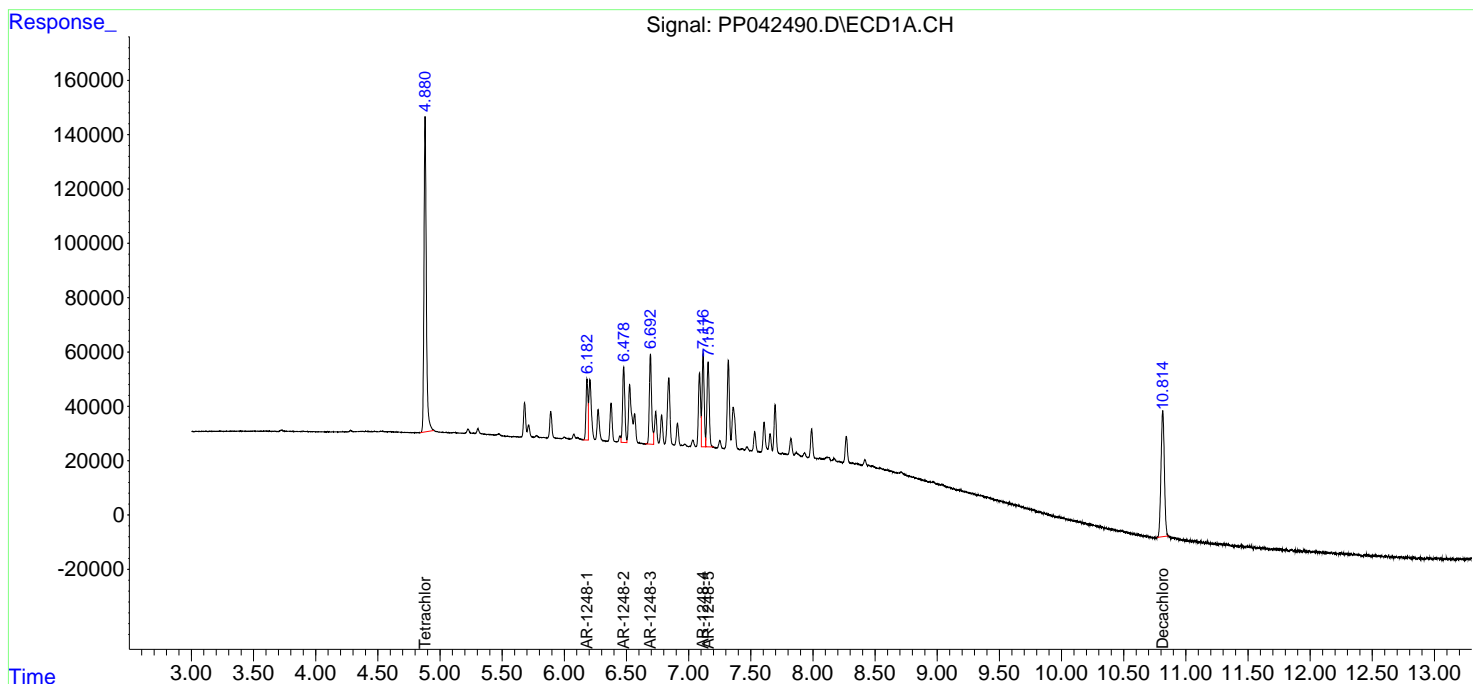
(f)=RT Delta > 1/2 Window (#)=Amounts differ by > 25% (m)=manual int.

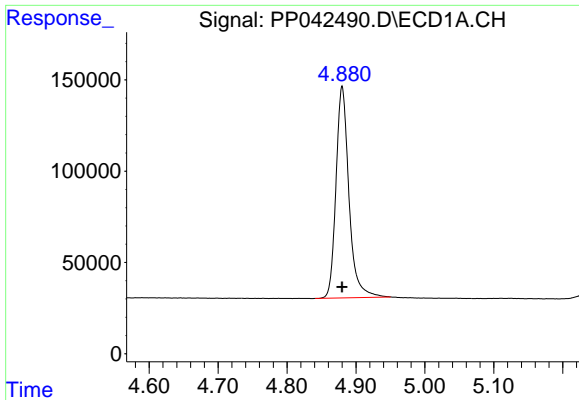
Data Path : Z:\pestpcbsrv\HPCHEM1\ECD_P\Data\PP010422\
 Data File : PP042490.D
 Signal(s) : Signal #1: ECD1A.CH Signal #2: ECD2B.CH
 Acq On : 04 Jan 2022 21:46
 Operator : AJ\MA
 Sample : AR1248ICC750
 Misc :
 ALS Vial : 16 Sample Multiplier: 1

Instrument :
 ECD_P
 ClientSampleId :
 AR1248ICC750

Integration File signal 1: autoint1.e
 Integration File signal 2: autoint2.e
 Quant Time: Jan 05 04:04:43 2022
 Quant Method : Z:\pestpcbsrv\HPCHEM1\ECD_P\methods\PP010422.M
 Quant Title : GC EXTRACTABLES
 QLast Update : Wed Jan 05 03:48:00 2022
 Response via : Initial Calibration
 Integrator: ChemStation 6890 Scale Mode: Small noise peaks clipped

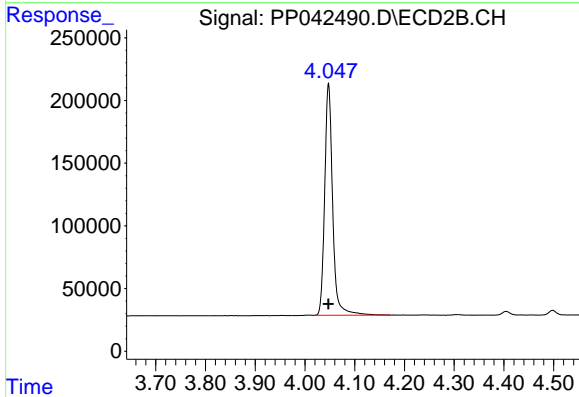
Volume Inj. : 2 µl
 Signal #1 Phase : ZB-MR1 Signal #2 Phase: ZB-MR2
 Signal #1 Info : 30Mx0.32mmx 0.50µ Signal #2 Info : 30M x 0.32mm x 0.25µm



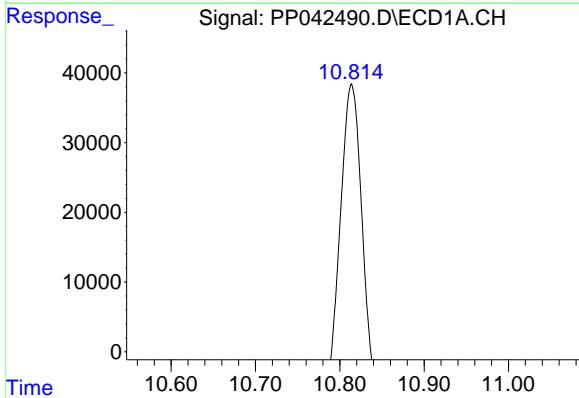


#1 Tetrachloro-m-xylene
 R.T.: 4.880 min
 Delta R.T.: 0.000 min
 Response: 1513811
 Conc: 75.43 ng/ml

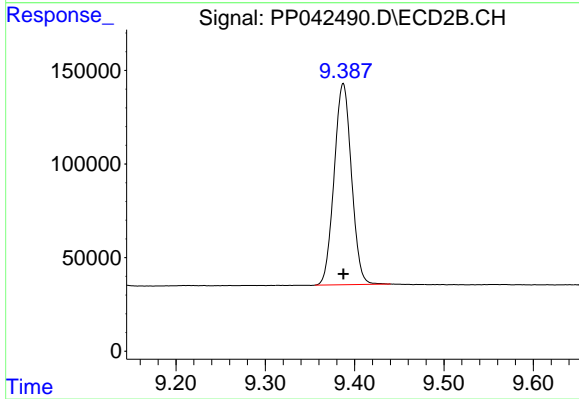
Instrument :
 ECD_P
 ClientSampleId :
 AR1248ICC750



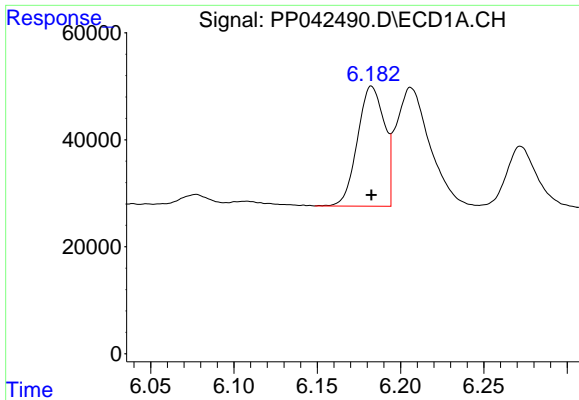
#1 Tetrachloro-m-xylene
 R.T.: 4.047 min
 Delta R.T.: 0.000 min
 Response: 2059499
 Conc: 75.66 ng/ml



#2 Decachlorobiphenyl
 R.T.: 10.814 min
 Delta R.T.: 0.000 min
 Response: 866997
 Conc: 74.63 ng/ml



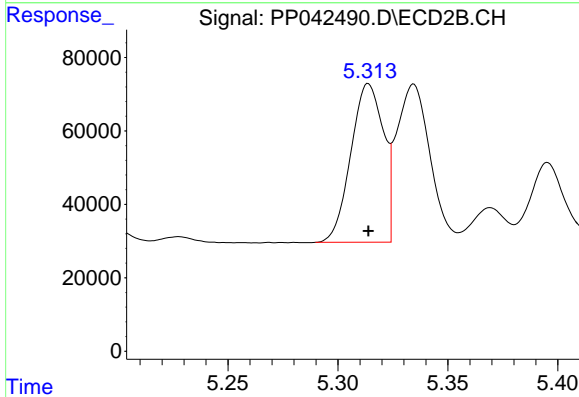
#2 Decachlorobiphenyl
 R.T.: 9.387 min
 Delta R.T.: 0.000 min
 Response: 1448397
 Conc: 74.87 ng/ml



#21 AR-1248-1

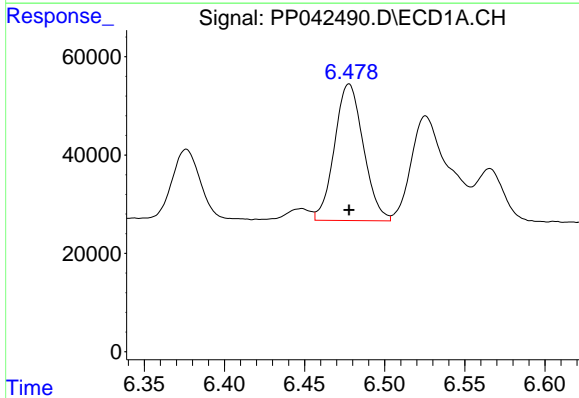
R.T.: 6.183 min
 Delta R.T.: 0.000 min
 Response: 251427
 Conc: 743.01 ng/ml

Instrument :
 ECD_P
 ClientSampleId :
 AR1248ICC750



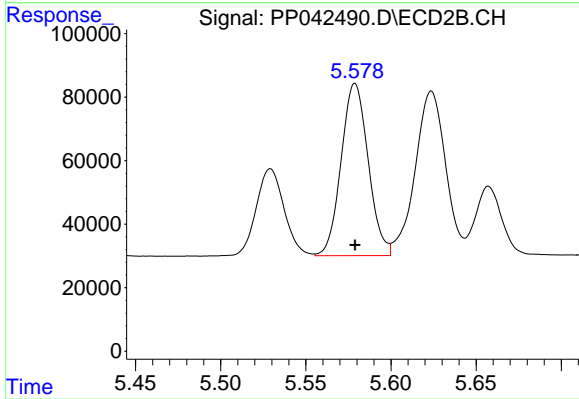
#21 AR-1248-1

R.T.: 5.314 min
 Delta R.T.: 0.000 min
 Response: 444775
 Conc: 756.17 ng/ml



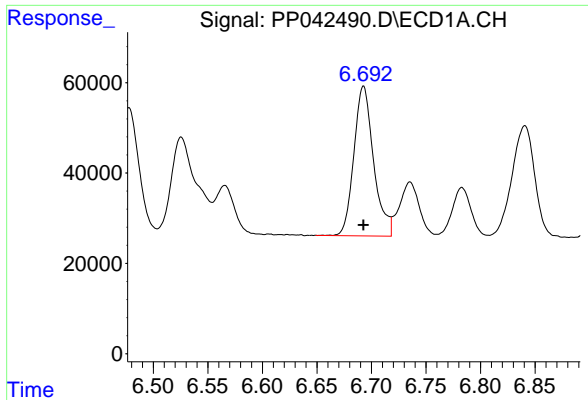
#22 AR-1248-2

R.T.: 6.478 min
 Delta R.T.: 0.000 min
 Response: 348602
 Conc: 751.09 ng/ml



#22 AR-1248-2

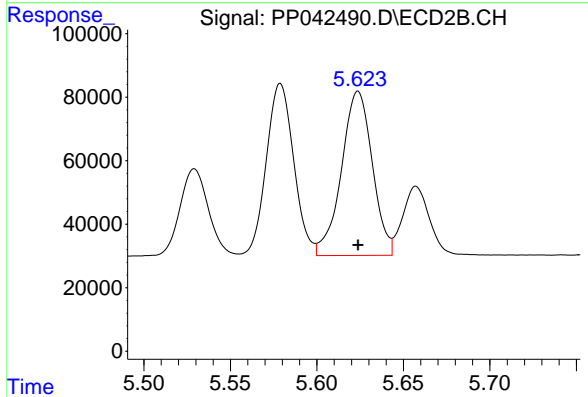
R.T.: 5.579 min
 Delta R.T.: 0.000 min
 Response: 599230
 Conc: 751.59 ng/ml



#23 AR-1248-3

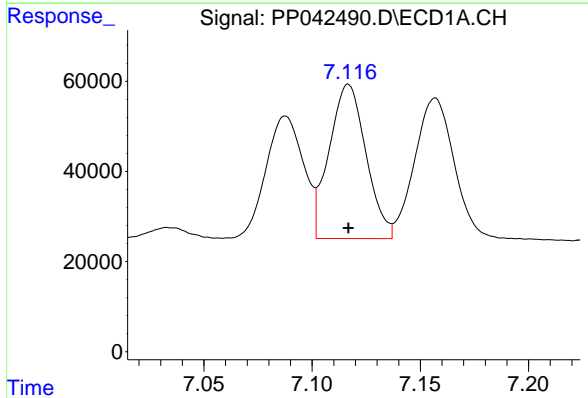
R.T.: 6.693 min
 Delta R.T.: 0.000 min
 Response: 416946
 Conc: 748.79 ng/ml

Instrument :
 ECD_P
 ClientSampleId :
 AR1248ICC750



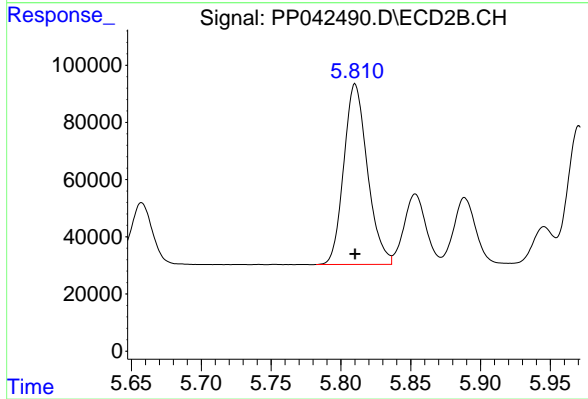
#23 AR-1248-3

R.T.: 5.624 min
 Delta R.T.: 0.000 min
 Response: 641010
 Conc: 751.46 ng/ml



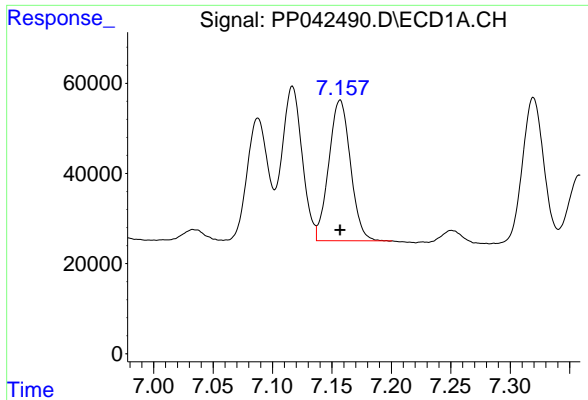
#24 AR-1248-4

R.T.: 7.117 min
 Delta R.T.: 0.000 min
 Response: 405772
 Conc: 750.50 ng/ml



#24 AR-1248-4

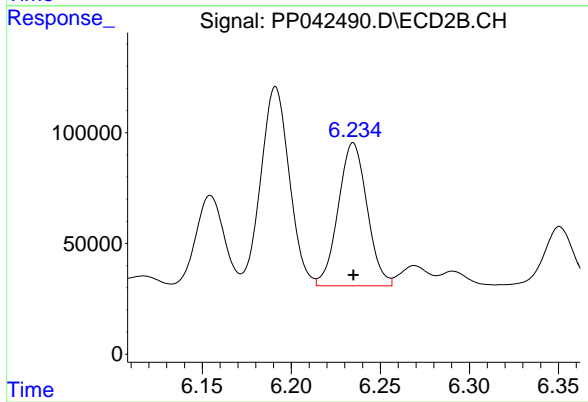
R.T.: 5.810 min
 Delta R.T.: 0.000 min
 Response: 743241
 Conc: 746.11 ng/ml



#25 AR-1248-5

R.T.: 7.157 min
Delta R.T.: 0.000 min
Response: 395909
Conc: 749.43 ng/ml

Instrument :
ECD_P
ClientSampleId :
AR1248ICC750



#25 AR-1248-5

R.T.: 6.235 min
Delta R.T.: 0.000 min
Response: 727704
Conc: 753.76 ng/ml