

Data Path : Z:\pestpcbsrv\HPCHEM1\ECD_L\Data\PL010423\
 Data File : PL080069.D
 Signal(s) : Signal #1: ECD1A.ch Signal #2: ECD2B.ch
 Acq On : 04 Jan 2023 20:24
 Operator : AR\AJ
 Sample : PSTDIC050
 Misc :
 ALS Vial : 7 Sample Multiplier: 1

Instrument :
 ECD_P
 ClientSampleId :

Integration File signal 1: autoint1.e
 Integration File signal 2: autoint2.e
 Quant Time: Jan 05 04:21:34 2023
 Quant Method : Z:\pestpcbsrv\HPCHEM1\ECD_L\methods\PL010423.M
 Quant Title : GC Extractables
 QLast Update : Thu Jan 05 04:17:26 2023
 Response via : Initial Calibration
 Integrator: ChemStation

Volume Inj. : 1 µl
 Signal #1 Phase : ZB-MR2 Signal #2 Phase: ZB-MR1
 Signal #1 Info : 30M x 0.32mm x0.2 Signal #2 Info : 30M x 0.32mm x0.5µm

	Compound	RT#1	RT#2	Resp#1	Resp#2	ng/ml	ng/ml

System Monitoring Compounds							
1)	SA Tetrachlo...	3.370	2.694	102.6E6	118.9E6	50.000	50.000
28)	SA Decachlor...	8.880	7.849	86171059	114.5E6	50.000	50.000
Target Compounds							
2)	A alpha-BHC	3.821	3.196	150.1E6	175.0E6	50.000	50.000
3)	MA gamma-BHC...	4.152	3.525	103.5E6	162.8E6	50.000	50.000
4)	MA Heptachlor	4.741	3.867	115.9E6	163.2E6	50.000	50.000
5)	MB Aldrin	5.082	4.147	103.1E6	156.2E6	50.000	50.000
6)	B beta-BHC	4.350	3.820	46142074	70565787	50.000	50.000
7)	B delta-BHC	4.595	4.050	106.2E6	157.1E6	50.000	50.000
8)	B Heptachlo...	5.511	4.650	93185278	143.1E6	50.000	50.000
9)	A Endosulfan I	5.896	5.019	87450695	134.6E6	50.000	50.000
10)	B gamma-Chl...	5.768	4.901	92599932	145.0E6	50.000	50.000
11)	B alpha-Chl...	5.848	4.965	91909814	145.4E6	50.000	50.000
12)	B 4,4'-DDE	6.031	5.158	81261101	122.6E6	50.000	50.000
13)	MA Dieldrin	6.173	5.285	88115750	137.6E6	50.000	50.000
14)	MA Endrin	6.402	5.559	79280622	118.6E6	50.000	50.000
15)	B Endosulfa...	6.624	5.853	77669078	113.4E6	50.000	50.000
16)	A 4,4'-DDD	6.552	5.712	68257056	99033570	50.000	50.000
17)	MA 4,4'-DDT	6.869	5.964	77069646	107.4E6	50.000	50.000
18)	B Endrin al...	6.756	6.033	62000424	91126256	50.000	50.000
19)	B Endosulfa...	6.993	6.256	82998064	115.4E6	50.000	50.000
20)	A Methoxychlor	7.359	6.543	45679087	59673807	50.000	50.000
21)	B Endrin ke...	7.477	6.761	91481246	127.3E6	50.000	50.000
22)	Mirex	7.953	6.946	77617276	106.0E6	50.000	50.000

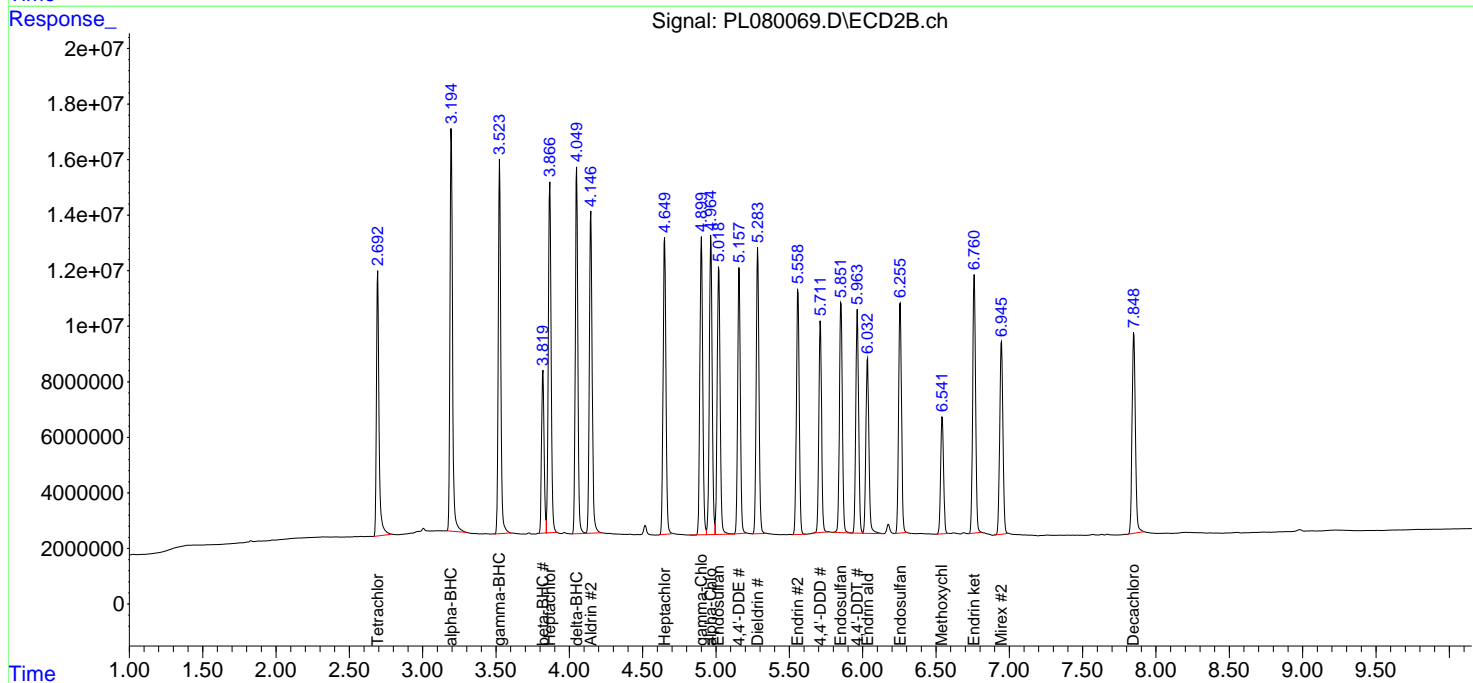
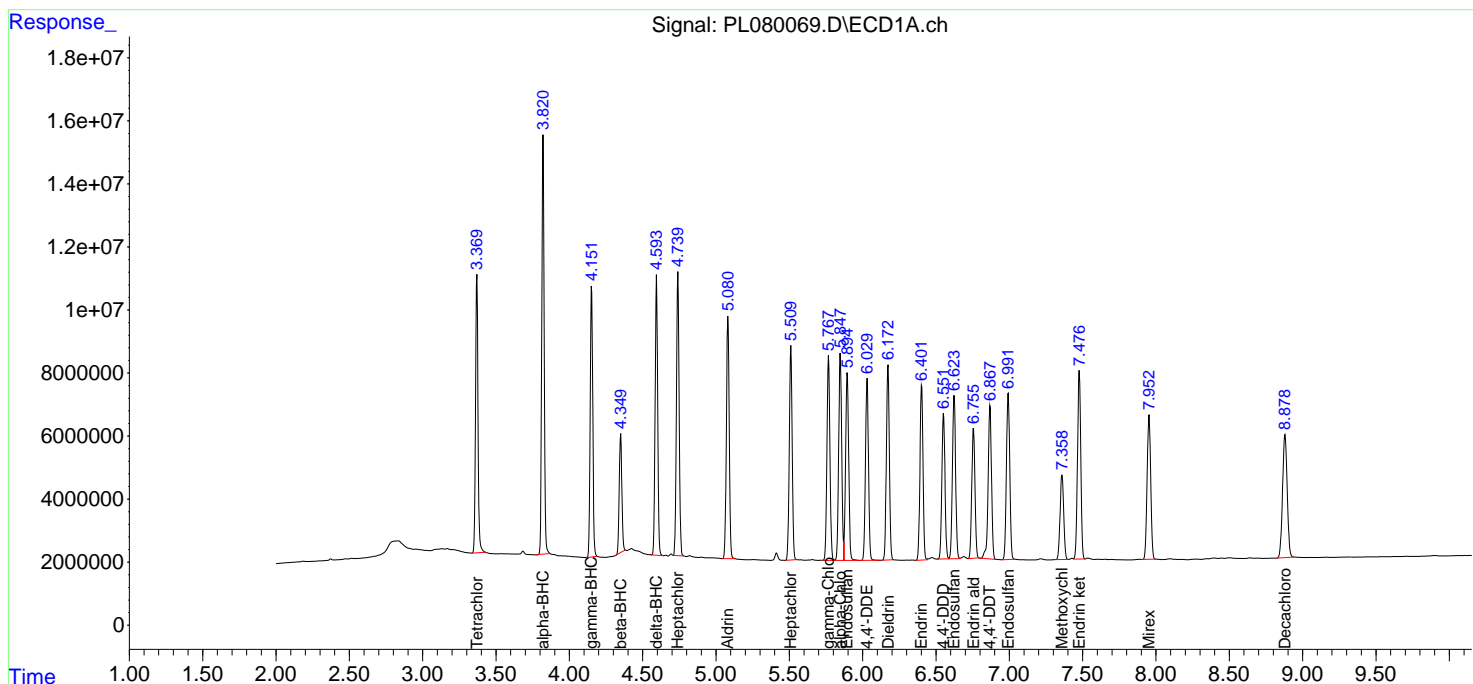
(f)=RT Delta > 1/2 Window (#)=Amounts differ by > 25% (m)=manual int.

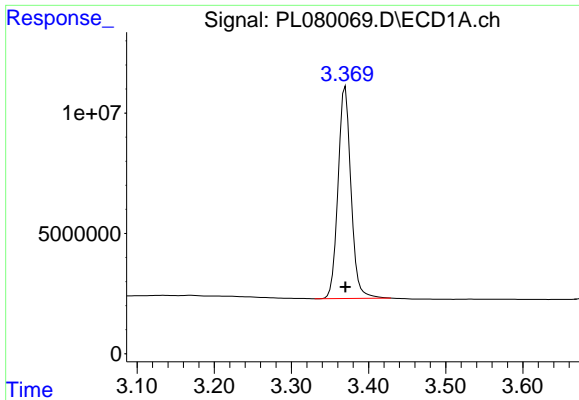
Data Path : Z:\pestpcbsrv\HPCHEM1\ECD_L\Data\PL010423\
 Data File : PL080069.D
 Signal(s) : Signal #1: ECD1A.ch Signal #2: ECD2B.ch
 Acq On : 04 Jan 2023 20:24
 Operator : AR\AJ
 Sample : PSTDICC050
 Misc :
 ALS Vial : 7 Sample Multiplier: 1

Instrument :
 ECD_P
 ClientSampleId :

Integration File signal 1: autoint1.e
 Integration File signal 2: autoint2.e
 Quant Time: Jan 05 04:21:34 2023
 Quant Method : Z:\pestpcbsrv\HPCHEM1\ECD_L\methods\PL010423.M
 Quant Title : GC Extractables
 QLast Update : Thu Jan 05 04:17:26 2023
 Response via : Initial Calibration
 Integrator: ChemStation

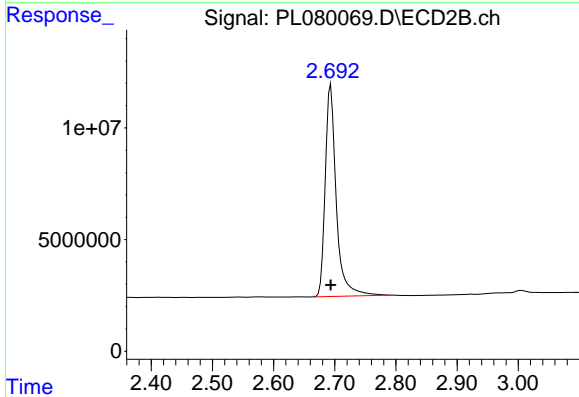
Volume Inj. : 1 µl
 Signal #1 Phase : ZB-MR2 Signal #2 Phase: ZB-MR1
 Signal #1 Info : 30M x 0.32mm x0.2 Signal #2 Info : 30M x 0.32mm x0.5µm



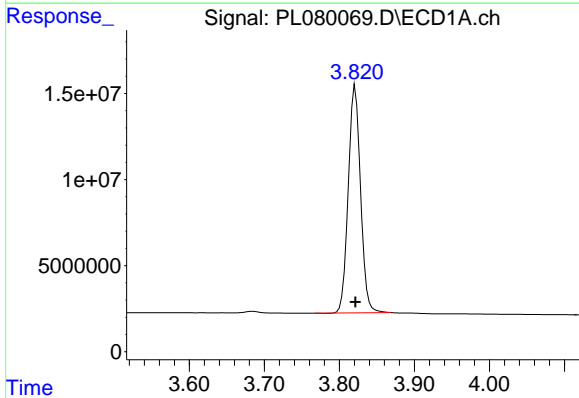


#1 Tetrachloro-m-xylene
 R.T.: 3.370 min
 Delta R.T.: 0.000 min
 Response: 102582418
 Conc: 50.00 ng/ml

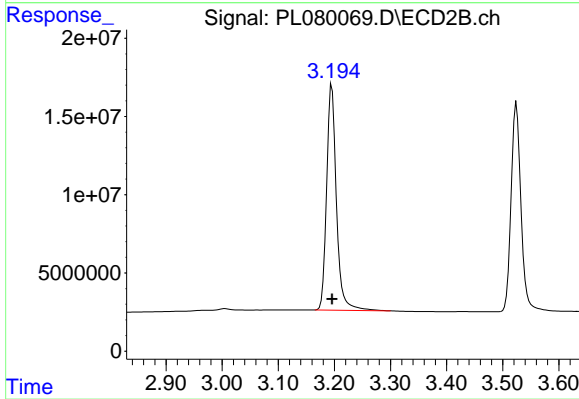
Instrument :
 ECD_P
 ClientSampleId :



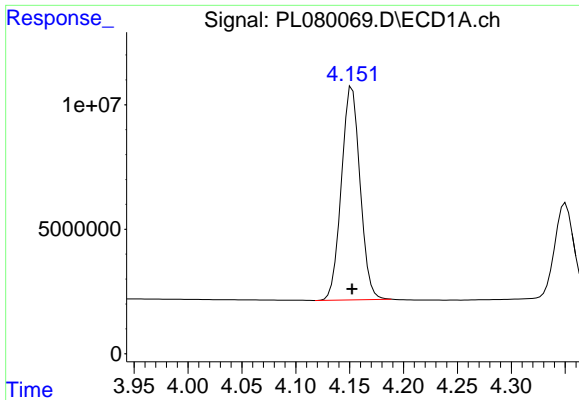
#1 Tetrachloro-m-xylene
 R.T.: 2.694 min
 Delta R.T.: 0.000 min
 Response: 118896717
 Conc: 50.00 ng/ml



#2 alpha-BHC
 R.T.: 3.821 min
 Delta R.T.: 0.000 min
 Response: 150146002
 Conc: 50.00 ng/ml

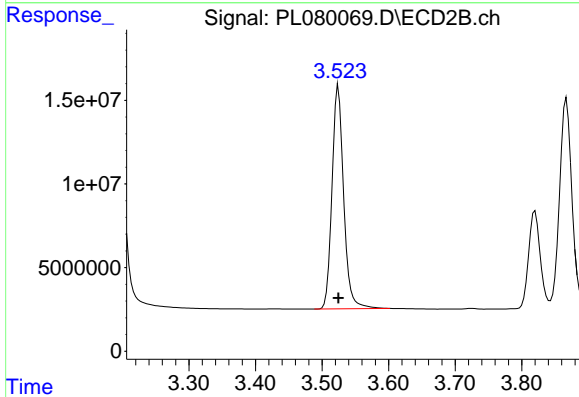


#2 alpha-BHC
 R.T.: 3.196 min
 Delta R.T.: 0.000 min
 Response: 174979666
 Conc: 50.00 ng/ml

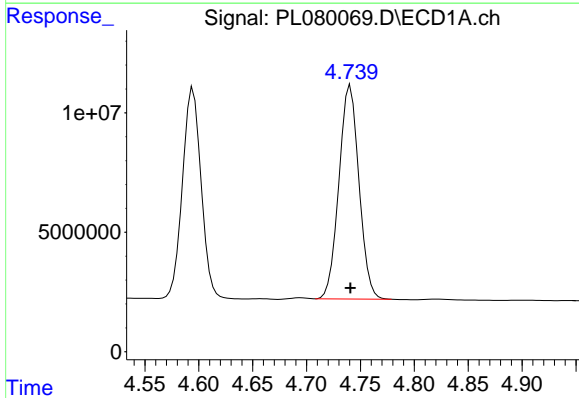


#3 gamma-BHC (Lindane)
 R.T.: 4.152 min
 Delta R.T.: 0.000 min
 Response: 103549309
 Conc: 50.00 ng/ml

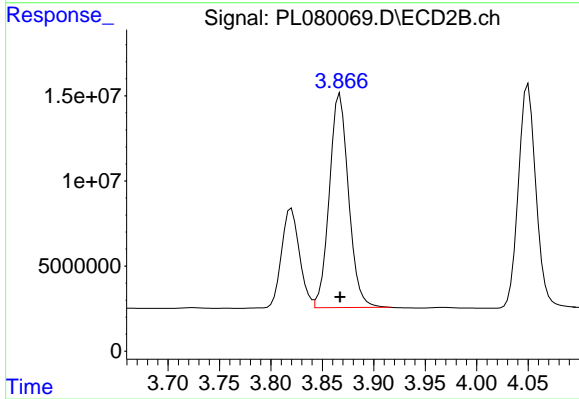
Instrument :
 ECD_P
 ClientSampleId :



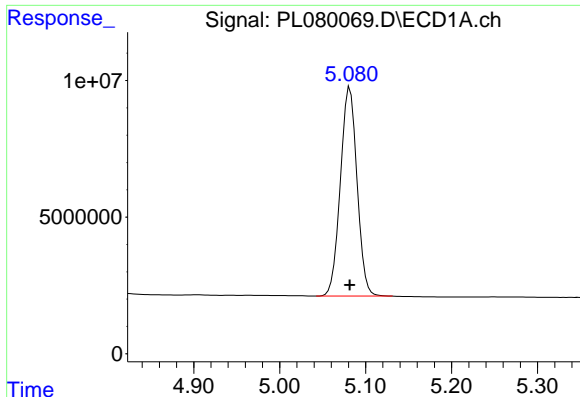
#3 gamma-BHC (Lindane)
 R.T.: 3.525 min
 Delta R.T.: 0.000 min
 Response: 162763942
 Conc: 50.00 ng/ml



#4 Heptachlor
 R.T.: 4.741 min
 Delta R.T.: 0.000 min
 Response: 115949443
 Conc: 50.00 ng/ml



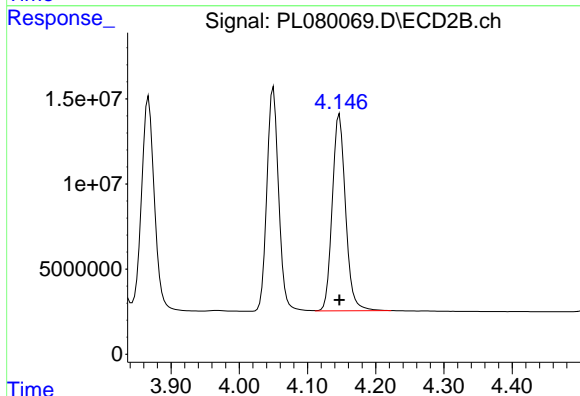
#4 Heptachlor
 R.T.: 3.867 min
 Delta R.T.: 0.000 min
 Response: 163240901
 Conc: 50.00 ng/ml



#5 Aldrin

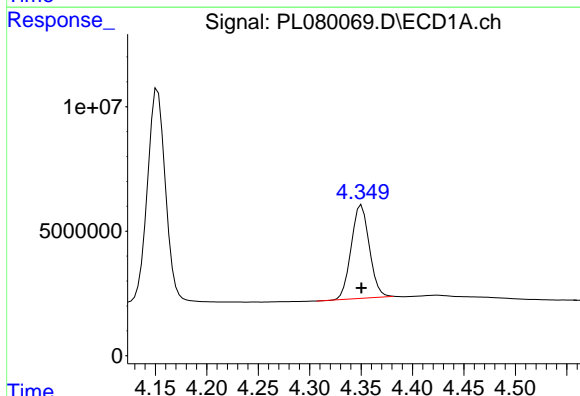
R.T.: 5.082 min
 Delta R.T.: 0.000 min
 Response: 103094235
 Conc: 50.00 ng/ml

Instrument :
 ECD_P
 ClientSampleId :



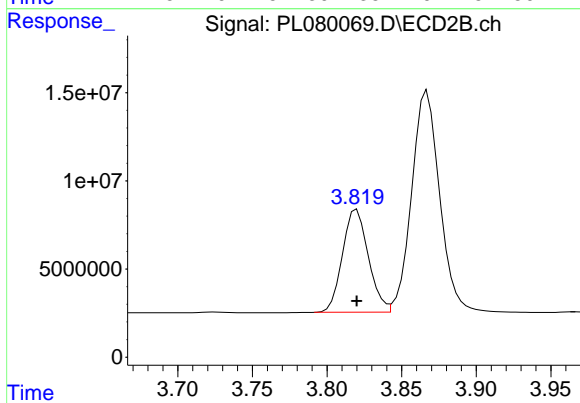
#5 Aldrin

R.T.: 4.147 min
 Delta R.T.: 0.000 min
 Response: 156224962
 Conc: 50.00 ng/ml



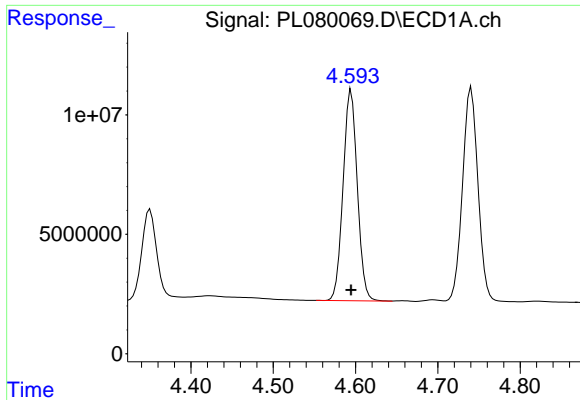
#6 beta-BHC

R.T.: 4.350 min
 Delta R.T.: 0.000 min
 Response: 46142074
 Conc: 50.00 ng/ml



#6 beta-BHC

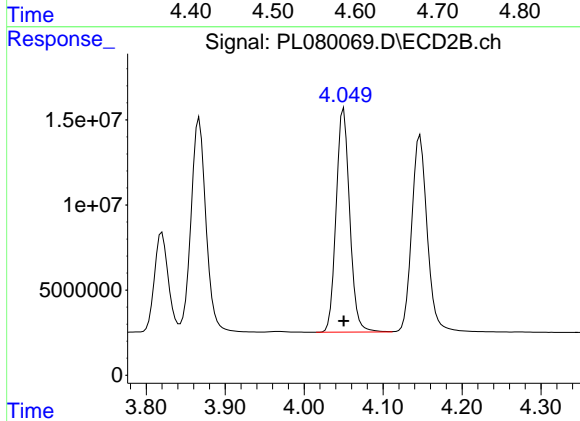
R.T.: 3.820 min
 Delta R.T.: 0.000 min
 Response: 70565787
 Conc: 50.00 ng/ml



#7 delta-BHC

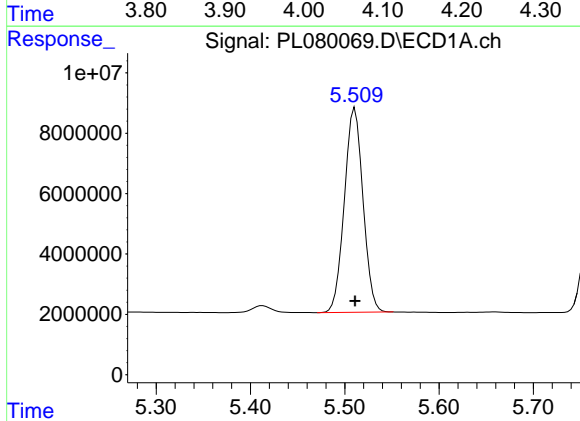
R.T.: 4.595 min
 Delta R.T.: 0.000 min
 Response: 106239797
 Conc: 50.00 ng/ml

Instrument :
 ECD_P
 ClientSampleId :



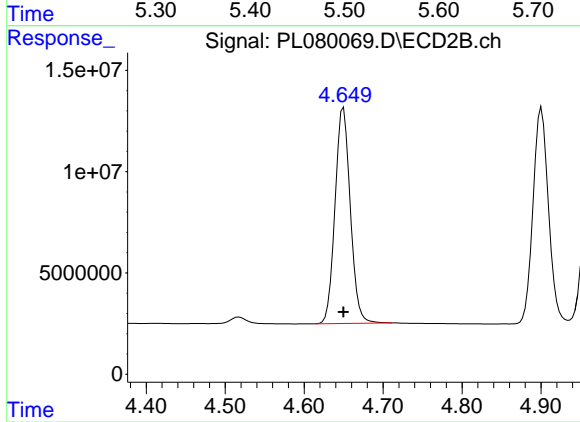
#7 delta-BHC

R.T.: 4.050 min
 Delta R.T.: 0.000 min
 Response: 157111855
 Conc: 50.00 ng/ml



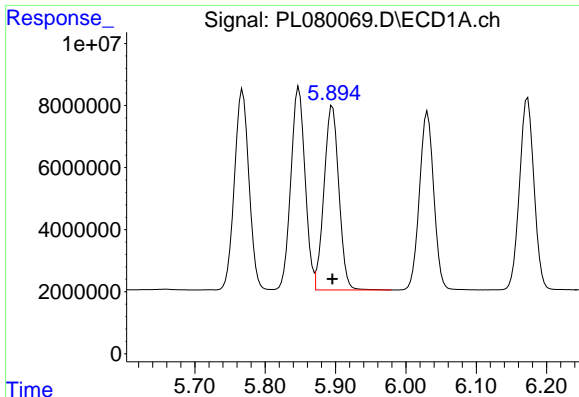
#8 Heptachlor epoxide

R.T.: 5.511 min
 Delta R.T.: 0.000 min
 Response: 93185278
 Conc: 50.00 ng/ml



#8 Heptachlor epoxide

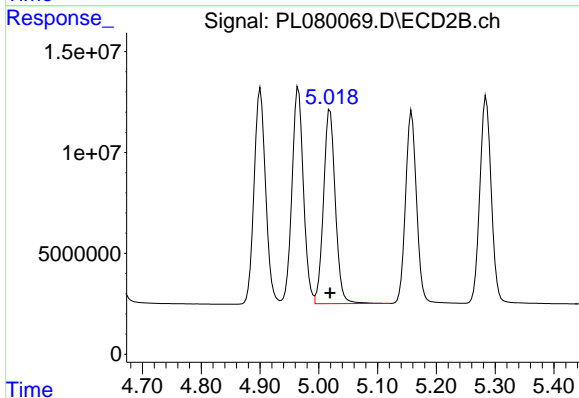
R.T.: 4.650 min
 Delta R.T.: 0.000 min
 Response: 143136997
 Conc: 50.00 ng/ml



#9 Endosulfan I

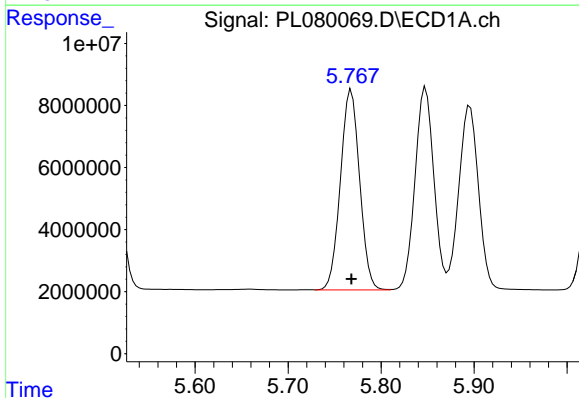
R.T.: 5.896 min
 Delta R.T.: 0.000 min
 Response: 87450695
 Conc: 50.00 ng/ml

Instrument :
 ECD_P
 ClientSampleId :



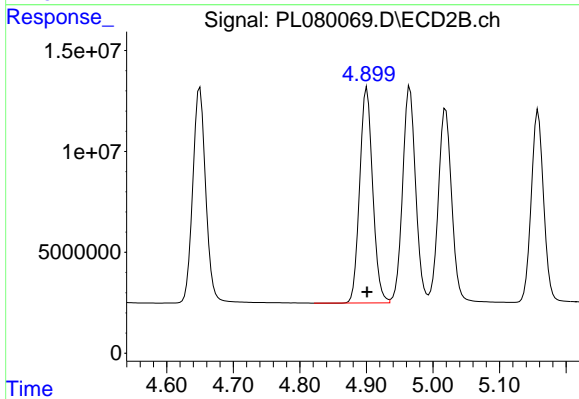
#9 Endosulfan I

R.T.: 5.019 min
 Delta R.T.: 0.000 min
 Response: 134647109
 Conc: 50.00 ng/ml



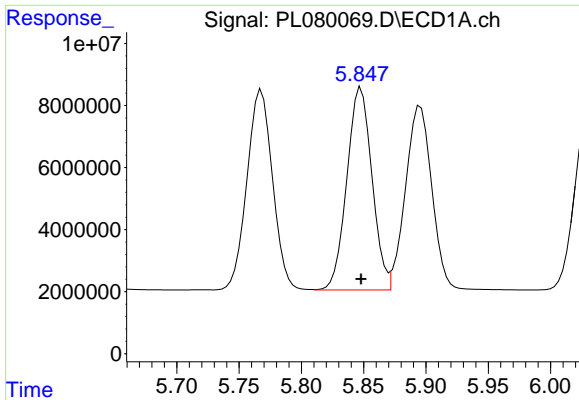
#10 gamma-Chlordane

R.T.: 5.768 min
 Delta R.T.: 0.000 min
 Response: 92599932
 Conc: 50.00 ng/ml



#10 gamma-Chlordane

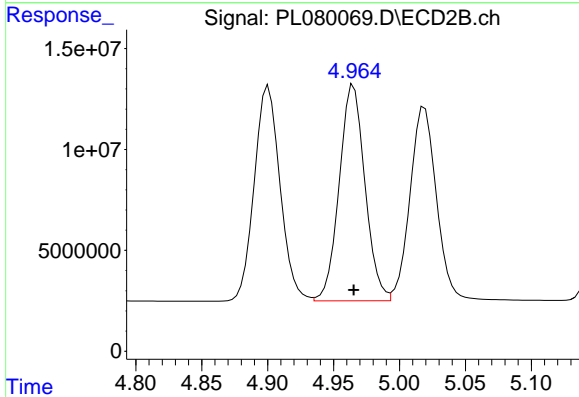
R.T.: 4.901 min
 Delta R.T.: 0.000 min
 Response: 144966336
 Conc: 50.00 ng/ml



#11 alpha-Chlordane

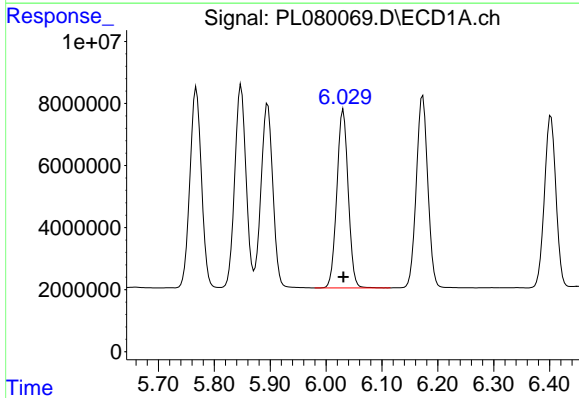
R.T.: 5.848 min
 Delta R.T.: 0.000 min
 Response: 91909814
 Conc: 50.00 ng/ml

Instrument :
 ECD_P
 ClientSampleId :



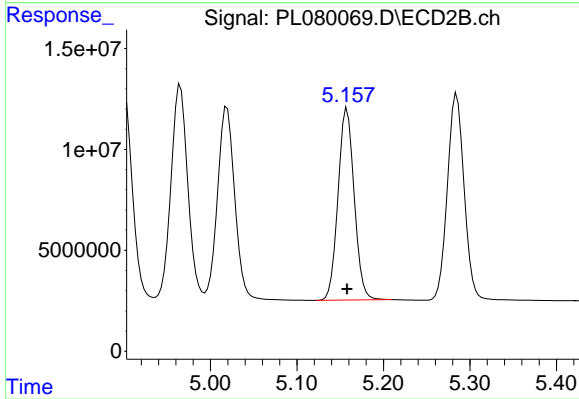
#11 alpha-Chlordane

R.T.: 4.965 min
 Delta R.T.: 0.000 min
 Response: 145362800
 Conc: 50.00 ng/ml



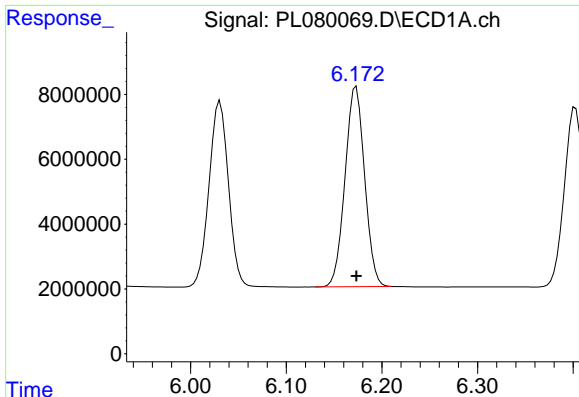
#12 4,4'-DDE

R.T.: 6.031 min
 Delta R.T.: 0.000 min
 Response: 81261101
 Conc: 50.00 ng/ml



#12 4,4'-DDE

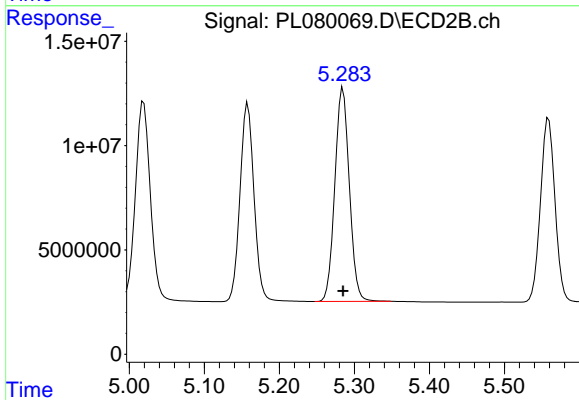
R.T.: 5.158 min
 Delta R.T.: 0.000 min
 Response: 122615988
 Conc: 50.00 ng/ml



#13 Dieldrin

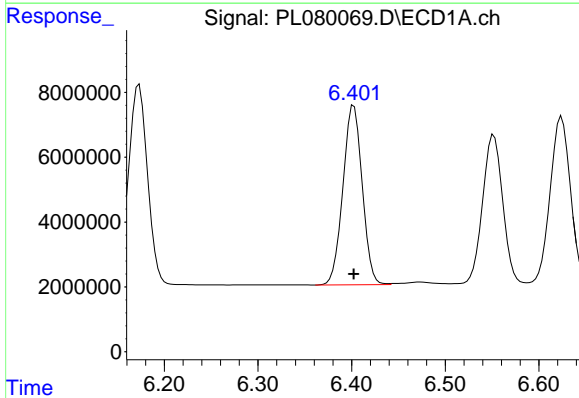
R.T.: 6.173 min
 Delta R.T.: 0.000 min
 Response: 88115750
 Conc: 50.00 ng/ml

Instrument :
 ECD_P
 ClientSampleId :



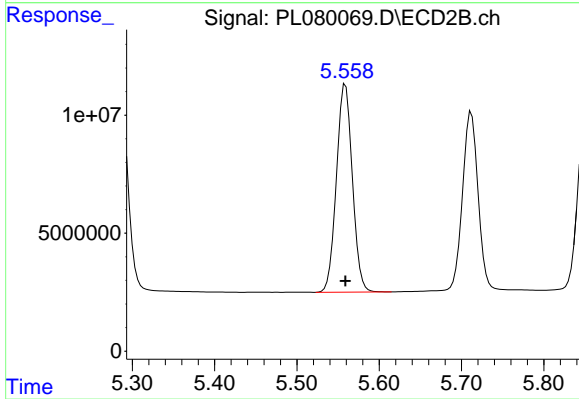
#13 Dieldrin

R.T.: 5.285 min
 Delta R.T.: 0.000 min
 Response: 137564296
 Conc: 50.00 ng/ml



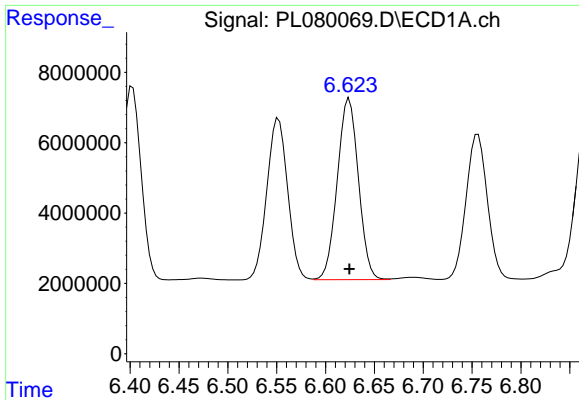
#14 Endrin

R.T.: 6.402 min
 Delta R.T.: 0.000 min
 Response: 79280622
 Conc: 50.00 ng/ml



#14 Endrin

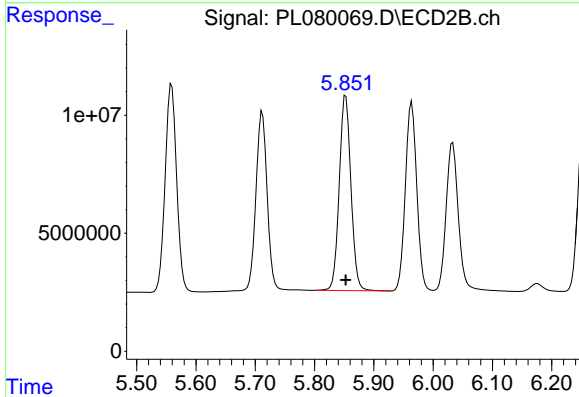
R.T.: 5.559 min
 Delta R.T.: 0.000 min
 Response: 118604986
 Conc: 50.00 ng/ml



#15 Endosulfan II

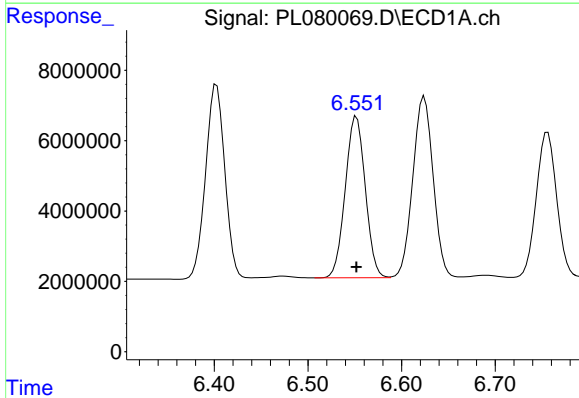
R.T.: 6.624 min
Delta R.T.: 0.000 min
Response: 77669078
Conc: 50.00 ng/ml

Instrument :
ECD_P
ClientSampleId :



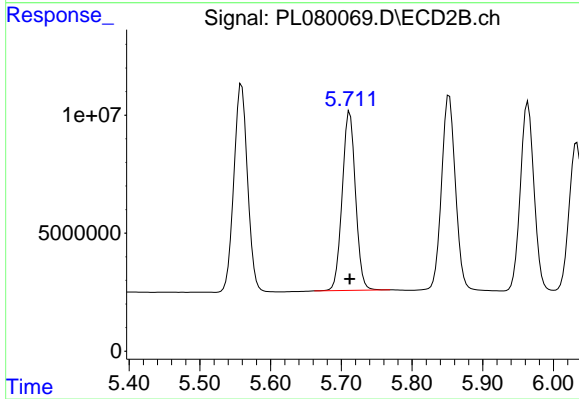
#15 Endosulfan II

R.T.: 5.853 min
Delta R.T.: 0.000 min
Response: 113393414
Conc: 50.00 ng/ml



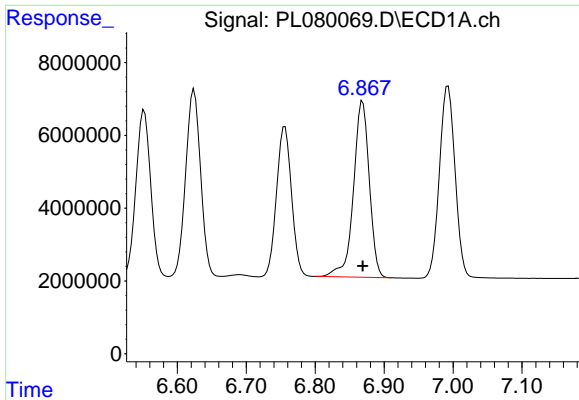
#16 4,4'-DDD

R.T.: 6.552 min
Delta R.T.: 0.000 min
Response: 68257056
Conc: 50.00 ng/ml



#16 4,4'-DDD

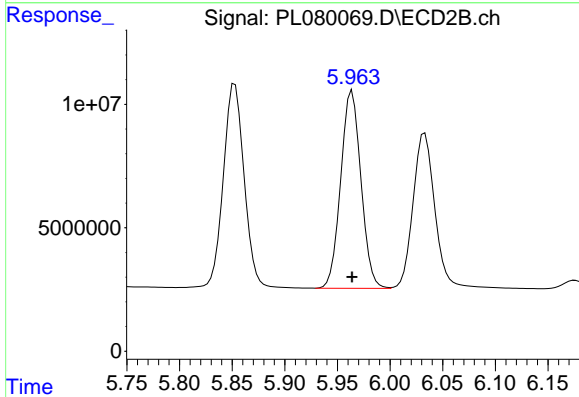
R.T.: 5.712 min
Delta R.T.: 0.000 min
Response: 99033570
Conc: 50.00 ng/ml



#17 4,4'-DDT

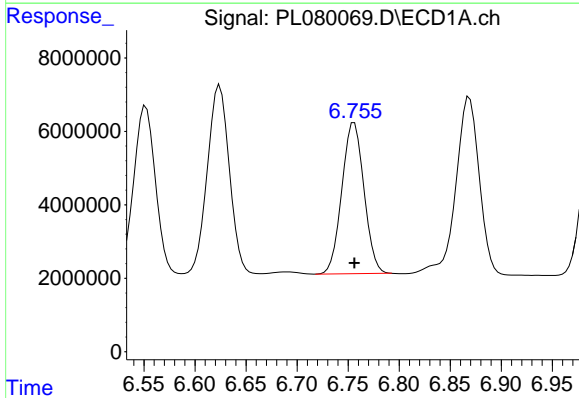
R.T.: 6.869 min
 Delta R.T.: 0.000 min
 Response: 77069646
 Conc: 50.00 ng/ml

Instrument :
 ECD_P
 ClientSampleId :



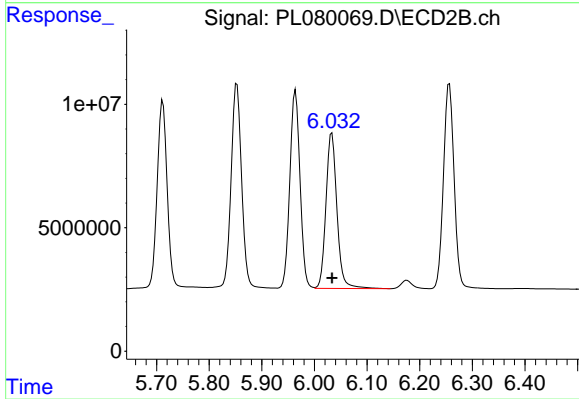
#17 4,4'-DDT

R.T.: 5.964 min
 Delta R.T.: 0.000 min
 Response: 107373192
 Conc: 50.00 ng/ml



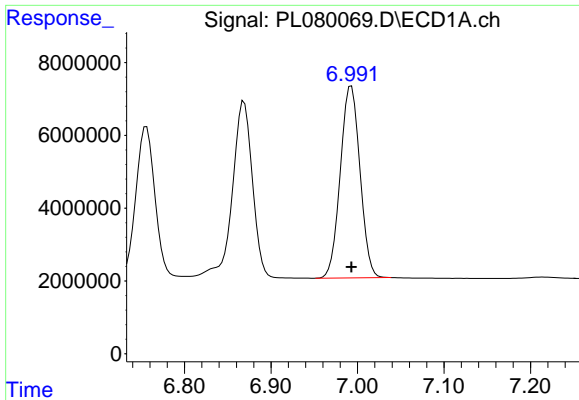
#18 Endrin aldehyde

R.T.: 6.756 min
 Delta R.T.: 0.000 min
 Response: 62000424
 Conc: 50.00 ng/ml



#18 Endrin aldehyde

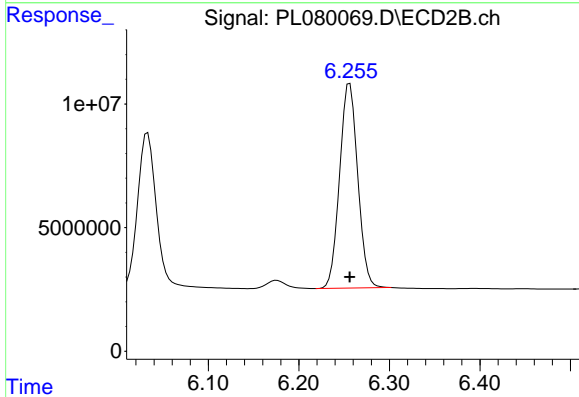
R.T.: 6.033 min
 Delta R.T.: 0.000 min
 Response: 91126256
 Conc: 50.00 ng/ml



#19 Endosulfan Sulfate

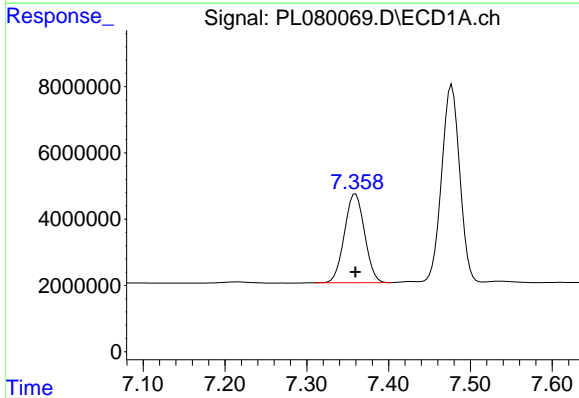
R.T.: 6.993 min
 Delta R.T.: 0.000 min
 Response: 82998064
 Conc: 50.00 ng/ml

Instrument :
 ECD_P
 ClientSampleId :



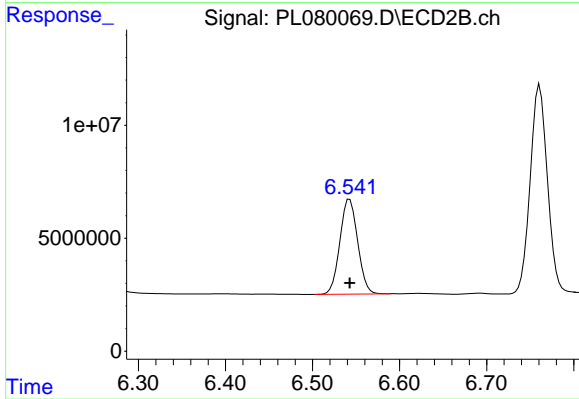
#19 Endosulfan Sulfate

R.T.: 6.256 min
 Delta R.T.: 0.000 min
 Response: 115363254
 Conc: 50.00 ng/ml



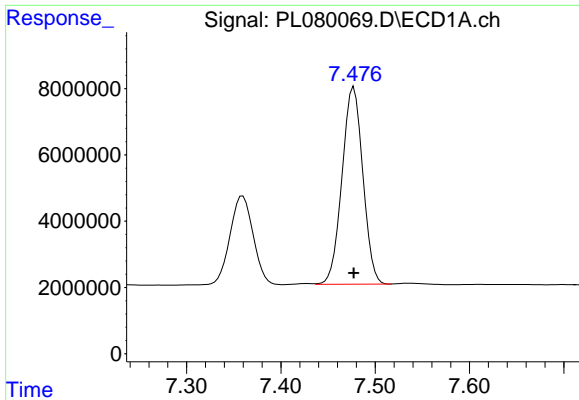
#20 Methoxychlor

R.T.: 7.359 min
 Delta R.T.: 0.000 min
 Response: 45679087
 Conc: 50.00 ng/ml



#20 Methoxychlor

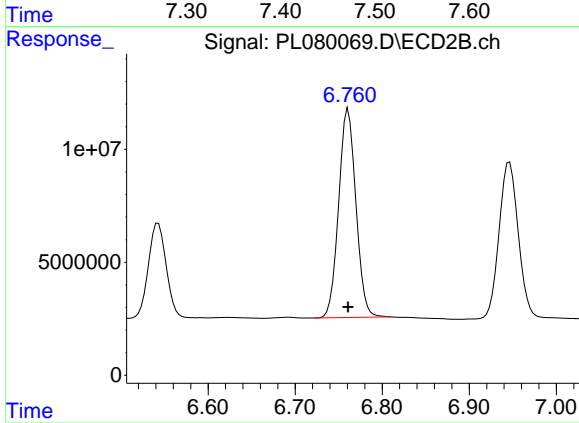
R.T.: 6.543 min
 Delta R.T.: 0.000 min
 Response: 59673807
 Conc: 50.00 ng/ml



#21 Endrin ketone

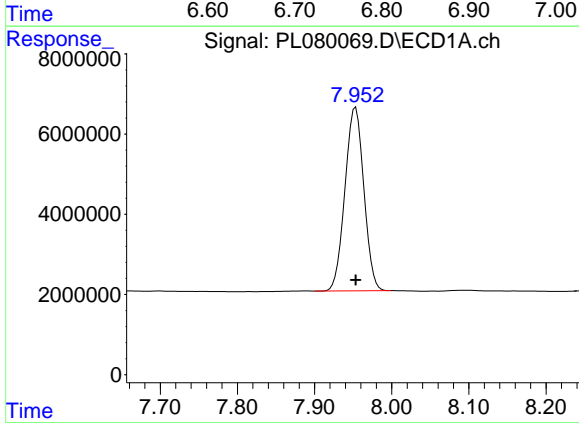
R.T.: 7.477 min
 Delta R.T.: 0.000 min
 Response: 91481246
 Conc: 50.00 ng/ml

Instrument :
 ECD_P
 ClientSampleId :



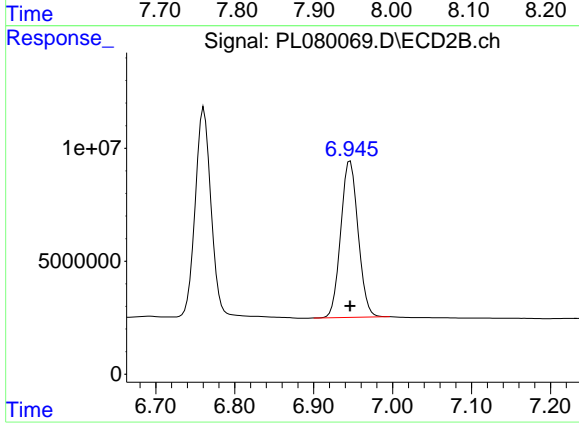
#21 Endrin ketone

R.T.: 6.761 min
 Delta R.T.: 0.000 min
 Response: 127250331
 Conc: 50.00 ng/ml



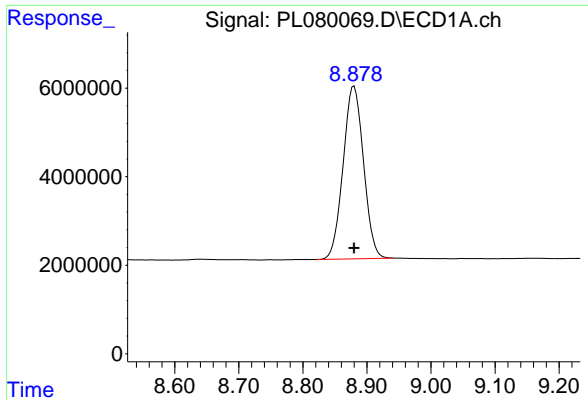
#22 Mirex

R.T.: 7.953 min
 Delta R.T.: 0.000 min
 Response: 77617276
 Conc: 50.00 ng/ml



#22 Mirex

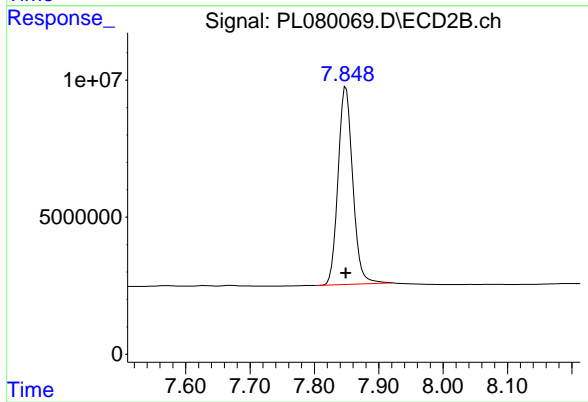
R.T.: 6.946 min
 Delta R.T.: 0.000 min
 Response: 105993067
 Conc: 50.00 ng/ml



#28 Decachlorobiphenyl

R.T.: 8.880 min
Delta R.T.: 0.000 min
Response: 86171059
Conc: 50.00 ng/ml

Instrument :
ECD_P
ClientSampleId :



#28 Decachlorobiphenyl

R.T.: 7.849 min
Delta R.T.: 0.000 min
Response: 114493665
Conc: 50.00 ng/ml