

Data Path : Z:\pestpcbsrv\HPCHEM1\ECD\_L\Data\PL010423\  
 Data File : PL080070.D  
 Signal(s) : Signal #1: ECD1A.ch Signal #2: ECD2B.ch  
 Acq On : 04 Jan 2023 20:37  
 Operator : AR\AJ  
 Sample : PSTDICC025  
 Misc :  
 ALS Vial : 8 Sample Multiplier: 1

Instrument :  
 ECD\_P  
 ClientSampleId :

Integration File signal 1: autoint1.e  
 Integration File signal 2: autoint2.e  
 Quant Time: Jan 05 04:21:56 2023  
 Quant Method : Z:\pestpcbsrv\HPCHEM1\ECD\_L\methods\PL010423.M  
 Quant Title : GC Extractables  
 QLast Update : Thu Jan 05 04:17:26 2023  
 Response via : Initial Calibration  
 Integrator: ChemStation

Volume Inj. : 1 µl  
 Signal #1 Phase : ZB-MR2 Signal #2 Phase: ZB-MR1  
 Signal #1 Info : 30M x 0.32mm x0.2 Signal #2 Info : 30M x 0.32mm x0.5µm

Compound	RT#1	RT#2	Resp#1	Resp#2	ng/ml	ng/ml
-----						
System Monitoring Compounds						
1) SA Tetrachlo...	3.370	2.694	49772792	56307082	24.260	23.679
28) SA Decachlor...	8.879	7.849	44689683	57587978	25.931	25.149
Target Compounds						
2) A alpha-BHC	3.821	3.196	68793669	78550567	22.909	22.446
3) MA gamma-BHC...	4.152	3.524	47379078	73184386	22.878	22.482
4) MA Heptachlor	4.741	3.866	55073160	75570487	23.749	23.147
5) MB Aldrin	5.081	4.147	48226376	70440672	23.389	22.545
6) B beta-BHC	4.350	3.819	22853174	33748484	24.764	23.913
7) B delta-BHC	4.595	4.050	48192204	69780058	22.681	22.207
8) B Heptachlo...	5.511	4.649	45348190	66952466	24.332	23.388
9) A Endosulfan I	5.895	5.019	42765376	63787285	24.451	23.687
10) B gamma-Chl...	5.768	4.900	44962179	67590749	24.278	23.313
11) B alpha-Chl...	5.848	4.965	45039854	68187679	24.502	23.454
12) B 4,4'-DDE	6.031	5.158	38598798	55224240	23.750	22.519
13) MA Dieldrin	6.173	5.284	42242003	63298329	23.970	23.007
14) MA Endrin	6.401	5.558	37637738	54058441	23.737	22.789
15) B Endosulfa...	6.623	5.852	38327612	53307471	24.674	23.506
16) A 4,4'-DDD	6.551	5.712	32500611	44444113	23.808	22.439
17) MA 4,4'-DDT	6.868	5.964	37170259	48755741	24.115	22.704
18) B Endrin al...	6.755	6.033	30659551	43600854	24.725	23.923
19) B Endosulfa...	6.992	6.256	41412152	54735399	24.948	23.723
20) A Methoxychlor	7.358	6.543	22931661	28807021	25.101	24.137
21) B Endrin ke...	7.476	6.761	44815289	59875716	24.494	23.527
22) Mirex	7.952	6.946	40442581	52798770	26.053	24.907

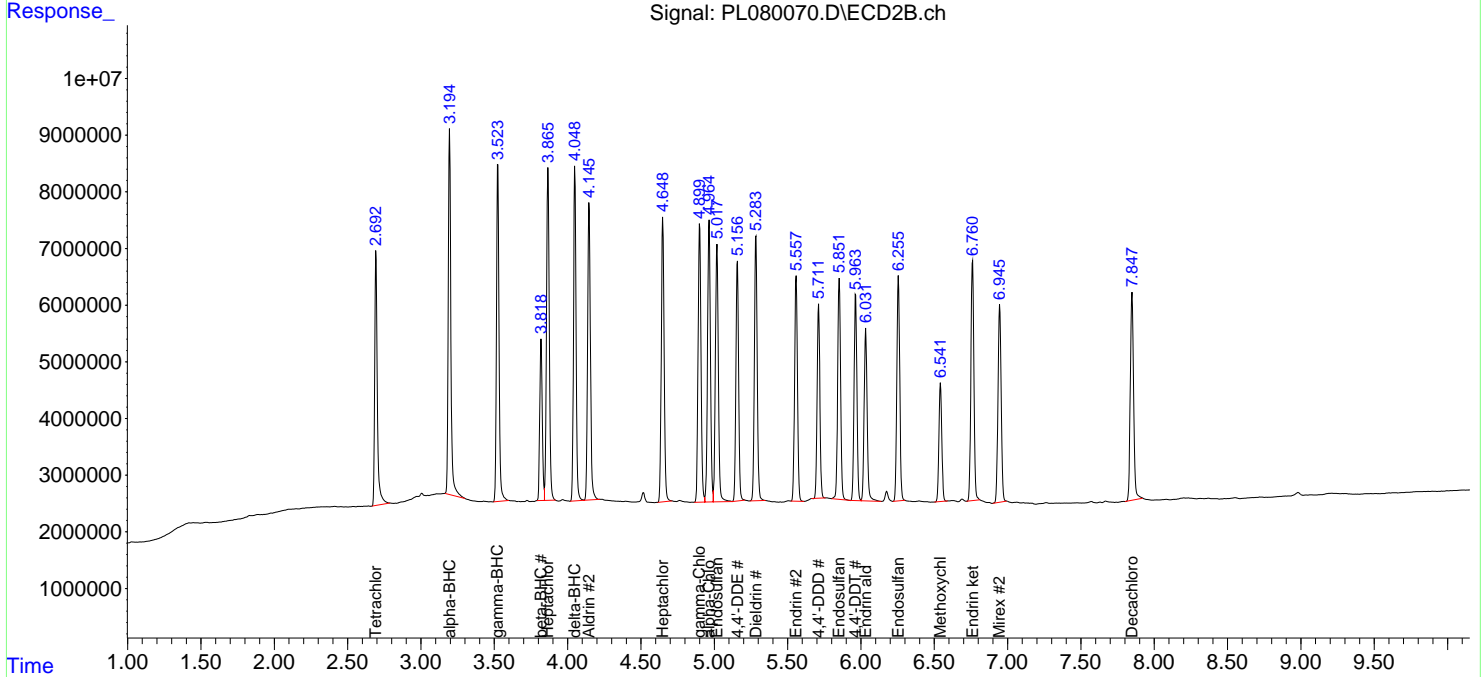
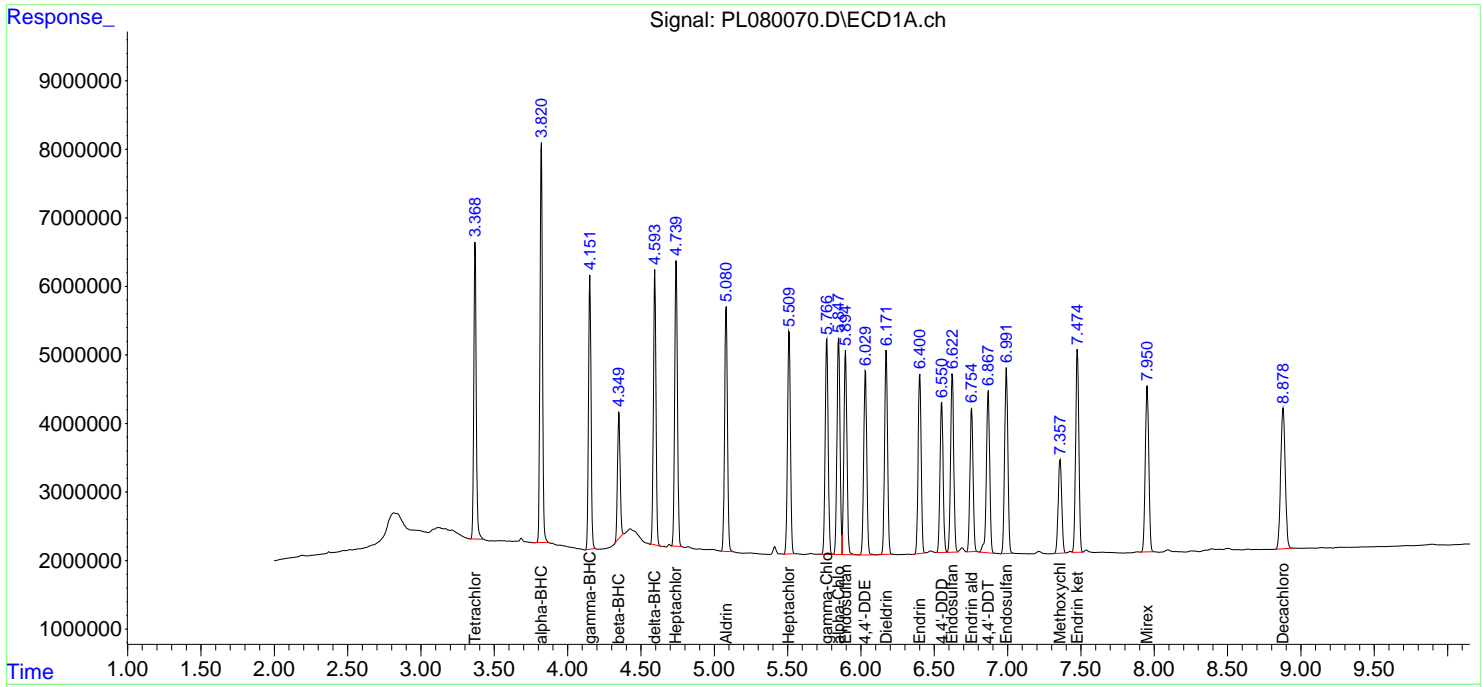
(f)=RT Delta > 1/2 Window (#)=Amounts differ by > 25% (m)=manual int.

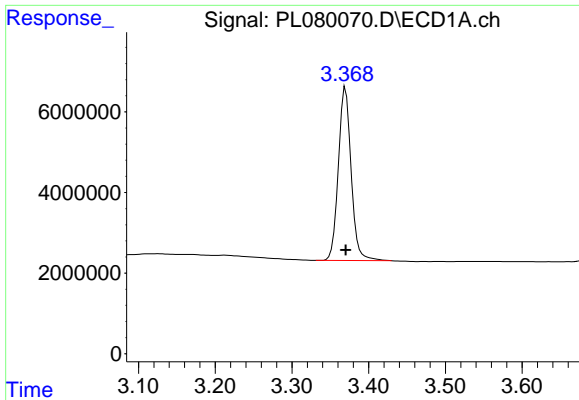
Data Path : Z:\pestpcbsrv\HPCHEM1\ECD\_L\Data\PL010423\  
 Data File : PL080070.D  
 Signal(s) : Signal #1: ECD1A.ch Signal #2: ECD2B.ch  
 Acq On : 04 Jan 2023 20:37  
 Operator : AR\AJ  
 Sample : PSTDICC025  
 Misc :  
 ALS Vial : 8 Sample Multiplier: 1

Instrument :  
 ECD\_P  
 ClientSampleId :

Integration File signal 1: autoint1.e  
 Integration File signal 2: autoint2.e  
 Quant Time: Jan 05 04:21:56 2023  
 Quant Method : Z:\pestpcbsrv\HPCHEM1\ECD\_L\methods\PL010423.M  
 Quant Title : GC Extractables  
 QLast Update : Thu Jan 05 04:17:26 2023  
 Response via : Initial Calibration  
 Integrator: ChemStation

Volume Inj. : 1 µl  
 Signal #1 Phase : ZB-MR2 Signal #2 Phase: ZB-MR1  
 Signal #1 Info : 30M x 0.32mm x0.2 Signal #2 Info : 30M x 0.32mm x0.5µm

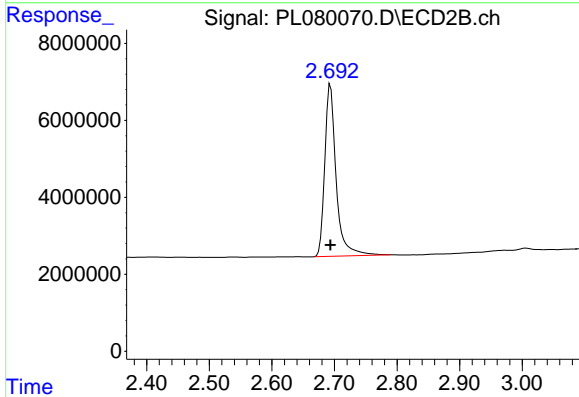




#1 Tetrachloro-m-xylene

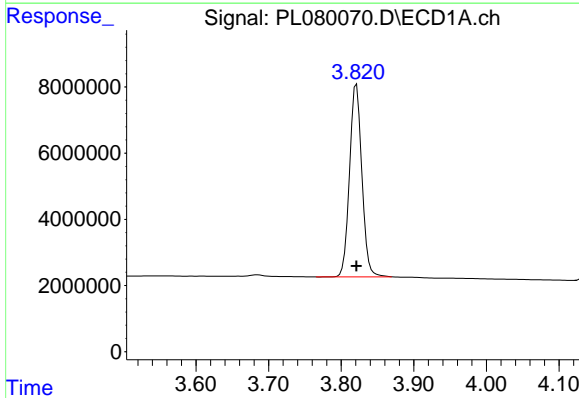
R.T.: 3.370 min  
 Delta R.T.: 0.000 min  
 Response: 49772792  
 Conc: 24.26 ng/ml

Instrument :  
 ECD\_P  
 ClientSampleId :



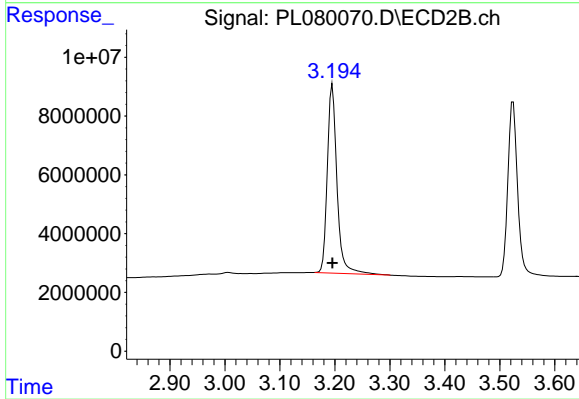
#1 Tetrachloro-m-xylene

R.T.: 2.694 min  
 Delta R.T.: 0.000 min  
 Response: 56307082  
 Conc: 23.68 ng/ml



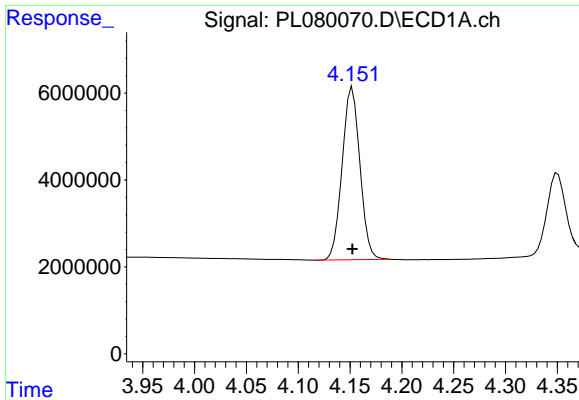
#2 alpha-BHC

R.T.: 3.821 min  
 Delta R.T.: 0.000 min  
 Response: 68793669  
 Conc: 22.91 ng/ml



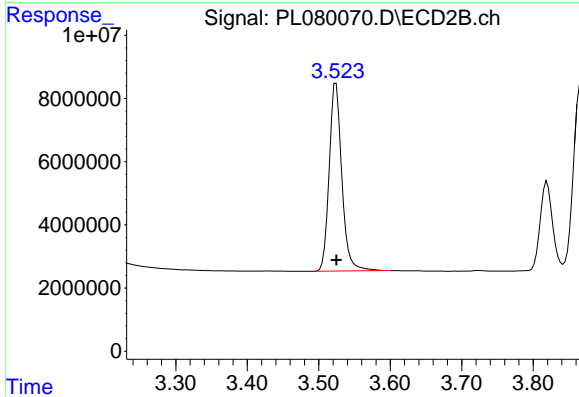
#2 alpha-BHC

R.T.: 3.196 min  
 Delta R.T.: 0.000 min  
 Response: 78550567  
 Conc: 22.45 ng/ml

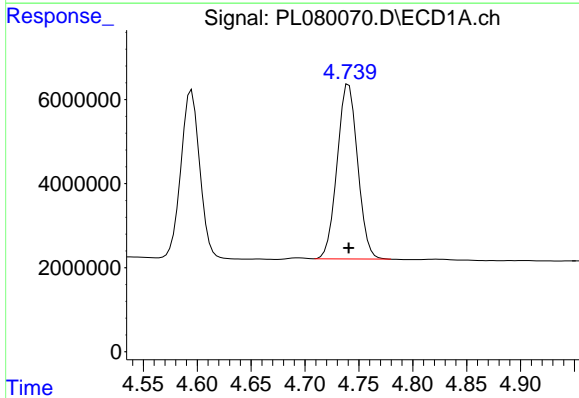


#3 gamma-BHC (Lindane)  
 R.T.: 4.152 min  
 Delta R.T.: 0.000 min  
 Response: 47379078  
 Conc: 22.88 ng/ml

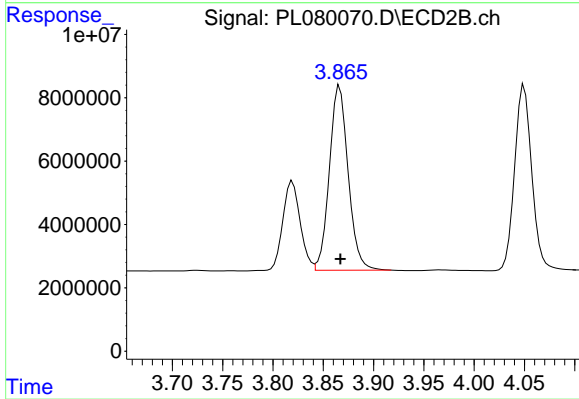
Instrument :  
 ECD\_P  
 ClientSampleId :



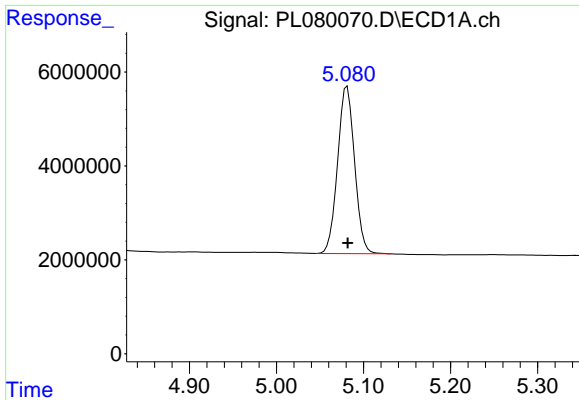
#3 gamma-BHC (Lindane)  
 R.T.: 3.524 min  
 Delta R.T.: 0.000 min  
 Response: 73184386  
 Conc: 22.48 ng/ml



#4 Heptachlor  
 R.T.: 4.741 min  
 Delta R.T.: 0.000 min  
 Response: 55073160  
 Conc: 23.75 ng/ml

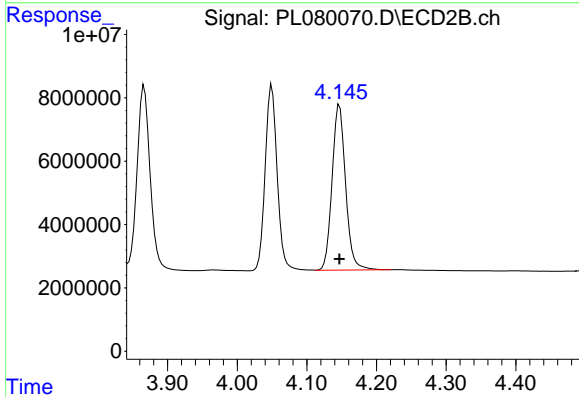


#4 Heptachlor  
 R.T.: 3.866 min  
 Delta R.T.: 0.000 min  
 Response: 75570487  
 Conc: 23.15 ng/ml

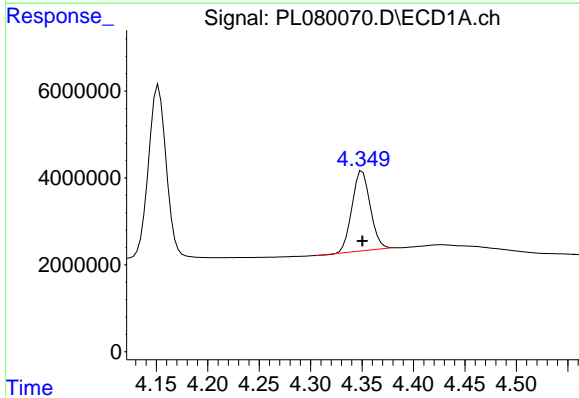


#5 Aldrin  
 R.T.: 5.081 min  
 Delta R.T.: 0.000 min  
 Response: 48226376  
 Conc: 23.39 ng/ml

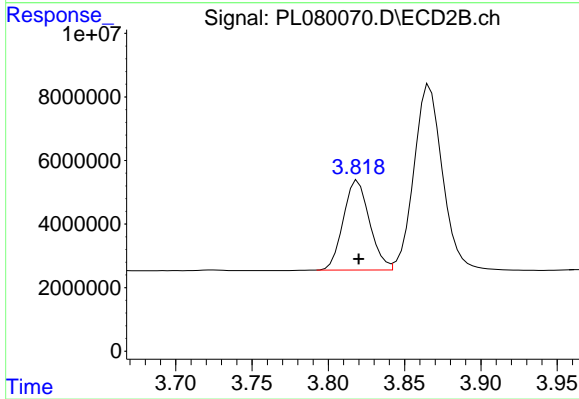
Instrument :  
 ECD\_P  
 ClientSampleId :



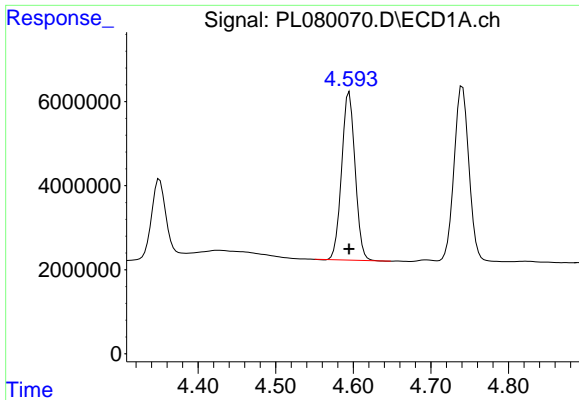
#5 Aldrin  
 R.T.: 4.147 min  
 Delta R.T.: 0.000 min  
 Response: 70440672  
 Conc: 22.54 ng/ml



#6 beta-BHC  
 R.T.: 4.350 min  
 Delta R.T.: 0.000 min  
 Response: 22853174  
 Conc: 24.76 ng/ml



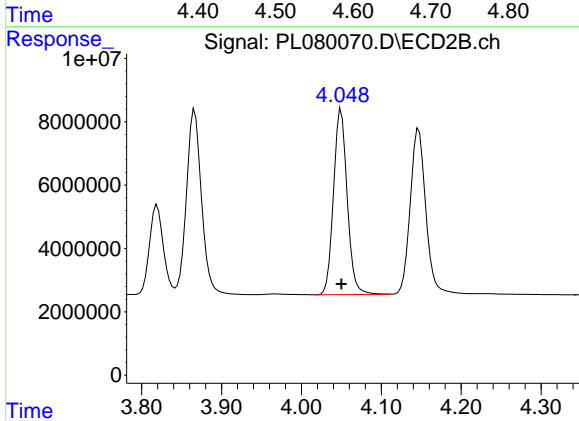
#6 beta-BHC  
 R.T.: 3.819 min  
 Delta R.T.: 0.000 min  
 Response: 33748484  
 Conc: 23.91 ng/ml



#7 delta-BHC

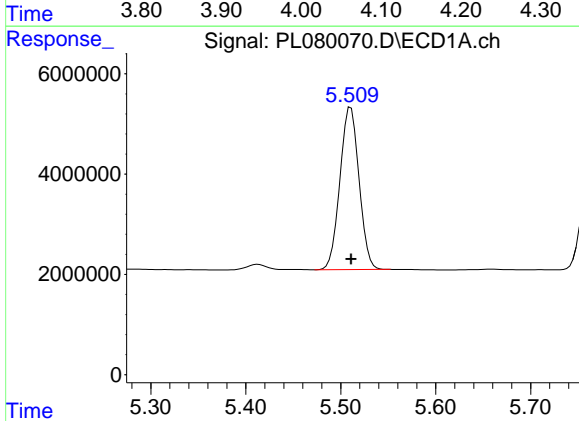
R.T.: 4.595 min  
 Delta R.T.: 0.000 min  
 Response: 48192204  
 Conc: 22.68 ng/ml

Instrument :  
 ECD\_P  
 ClientSampleId :



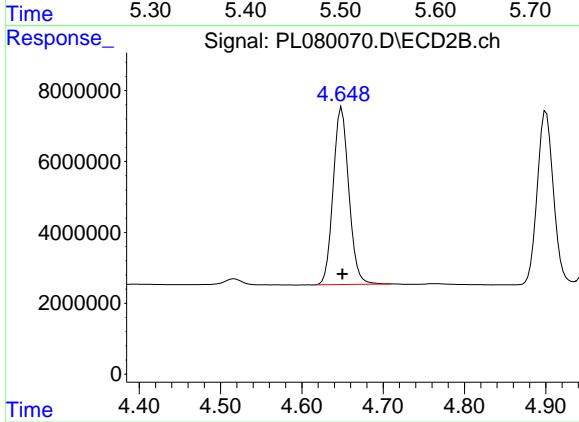
#7 delta-BHC

R.T.: 4.050 min  
 Delta R.T.: 0.000 min  
 Response: 69780058  
 Conc: 22.21 ng/ml



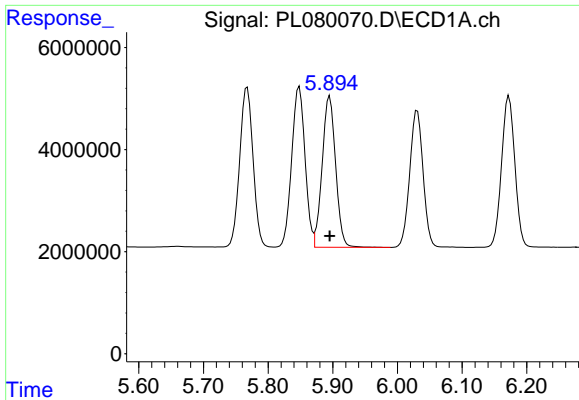
#8 Heptachlor epoxide

R.T.: 5.511 min  
 Delta R.T.: 0.000 min  
 Response: 45348190  
 Conc: 24.33 ng/ml



#8 Heptachlor epoxide

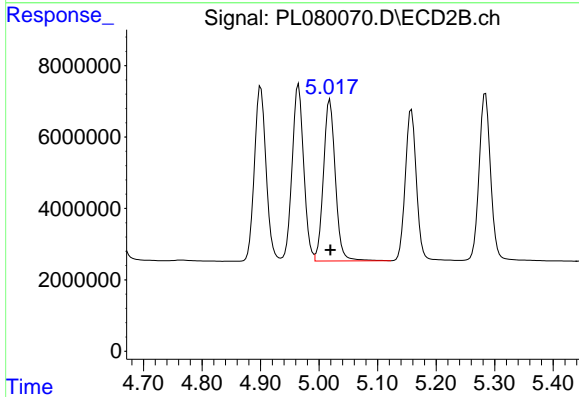
R.T.: 4.649 min  
 Delta R.T.: 0.000 min  
 Response: 66952466  
 Conc: 23.39 ng/ml



#9 Endosulfan I

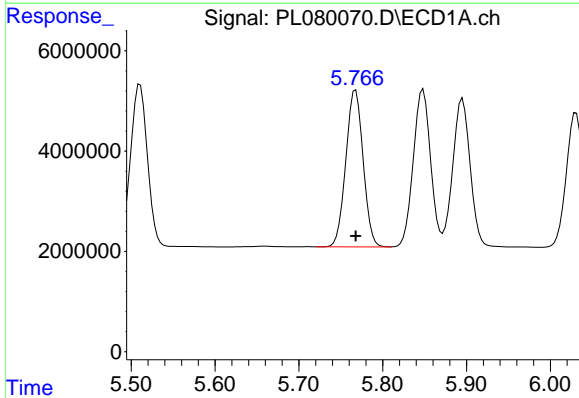
R.T.: 5.895 min  
 Delta R.T.: 0.000 min  
 Response: 42765376  
 Conc: 24.45 ng/ml

Instrument :  
 ECD\_P  
 ClientSampleId :



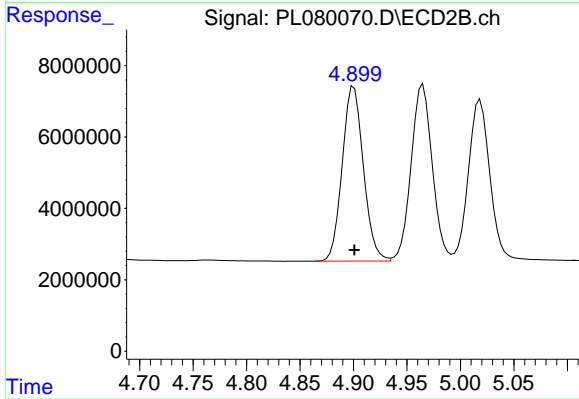
#9 Endosulfan I

R.T.: 5.019 min  
 Delta R.T.: 0.000 min  
 Response: 63787285  
 Conc: 23.69 ng/ml



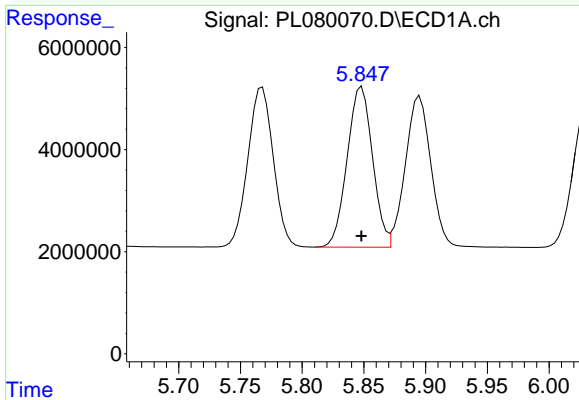
#10 gamma-Chlordane

R.T.: 5.768 min  
 Delta R.T.: 0.000 min  
 Response: 44962179  
 Conc: 24.28 ng/ml



#10 gamma-Chlordane

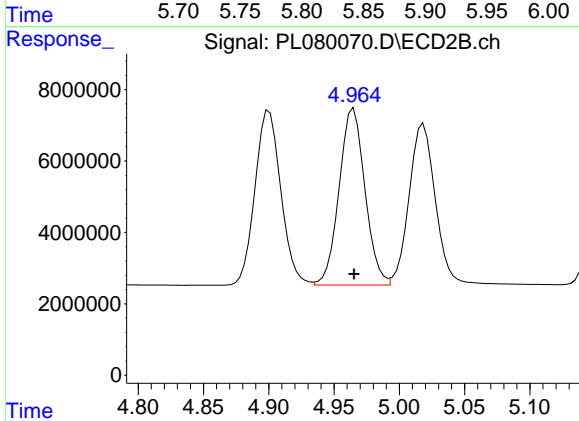
R.T.: 4.900 min  
 Delta R.T.: 0.000 min  
 Response: 67590749  
 Conc: 23.31 ng/ml



#11 alpha-Chlordane

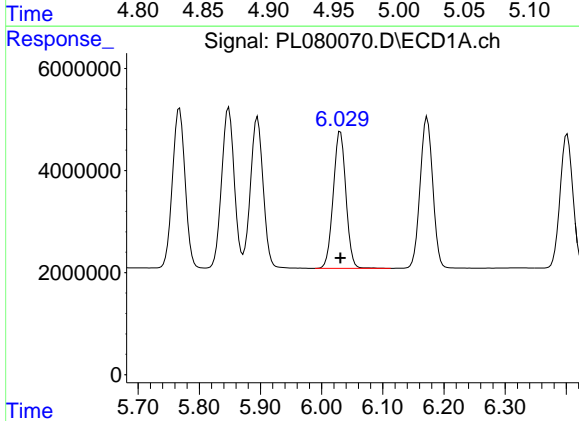
R.T.: 5.848 min  
 Delta R.T.: 0.000 min  
 Response: 45039854  
 Conc: 24.50 ng/ml

Instrument :  
 ECD\_P  
 ClientSampleId :



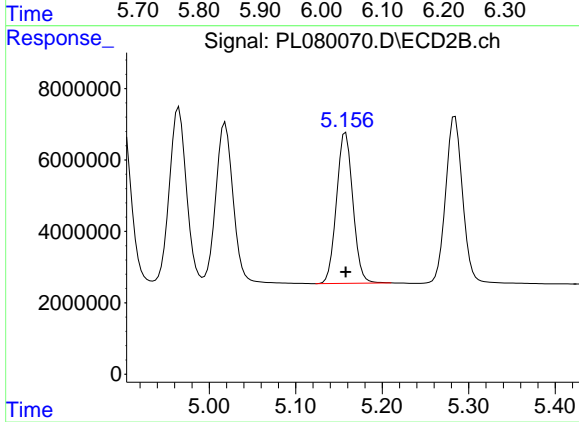
#11 alpha-Chlordane

R.T.: 4.965 min  
 Delta R.T.: 0.000 min  
 Response: 68187679  
 Conc: 23.45 ng/ml



#12 4,4'-DDE

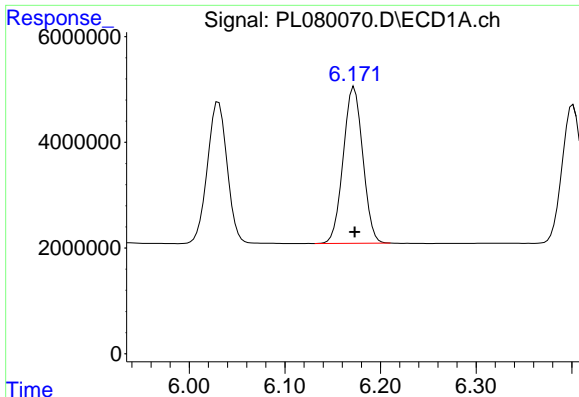
R.T.: 6.031 min  
 Delta R.T.: 0.000 min  
 Response: 38598798  
 Conc: 23.75 ng/ml



#12 4,4'-DDE

R.T.: 5.158 min  
 Delta R.T.: 0.000 min  
 Response: 55224240  
 Conc: 22.52 ng/ml

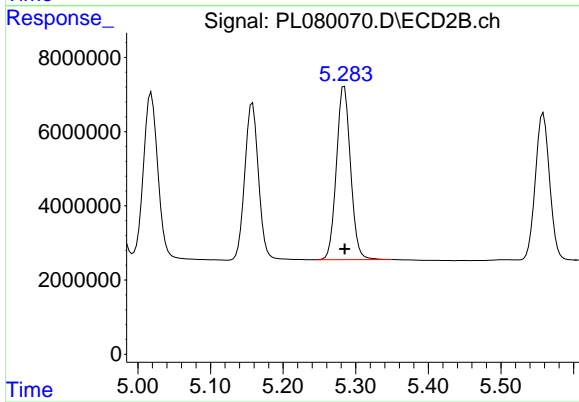




#13 Dieldrin

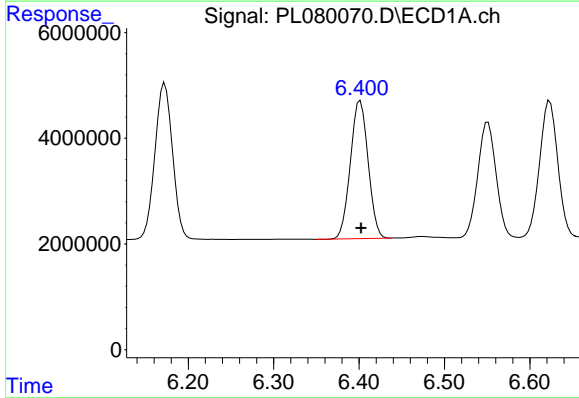
R.T.: 6.173 min  
 Delta R.T.: 0.000 min  
 Response: 42242003  
 Conc: 23.97 ng/ml

Instrument :  
 ECD\_P  
 ClientSampleId :



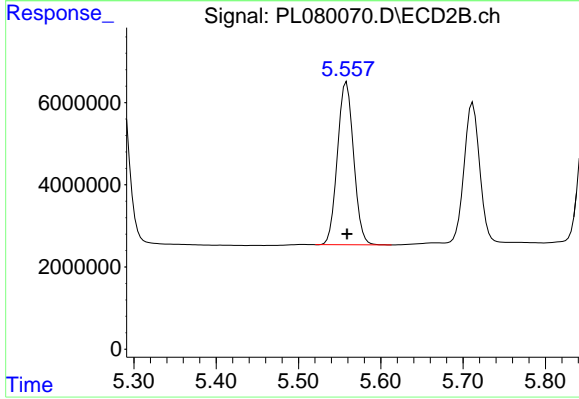
#13 Dieldrin

R.T.: 5.284 min  
 Delta R.T.: 0.000 min  
 Response: 63298329  
 Conc: 23.01 ng/ml



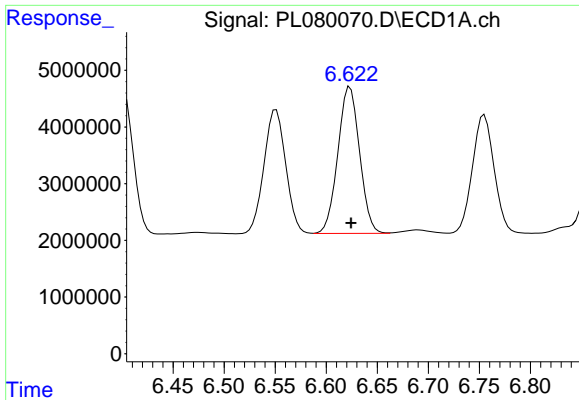
#14 Endrin

R.T.: 6.401 min  
 Delta R.T.: 0.000 min  
 Response: 37637738  
 Conc: 23.74 ng/ml



#14 Endrin

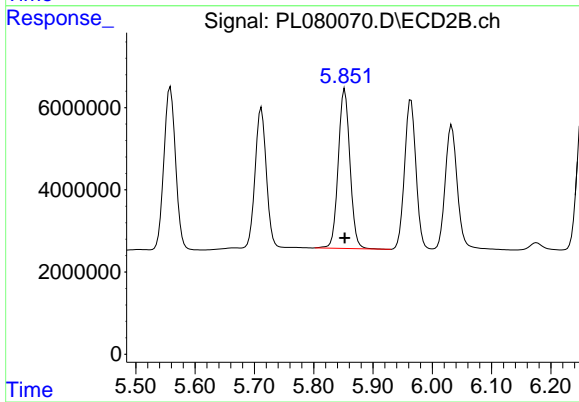
R.T.: 5.558 min  
 Delta R.T.: 0.000 min  
 Response: 54058441  
 Conc: 22.79 ng/ml



#15 Endosulfan II

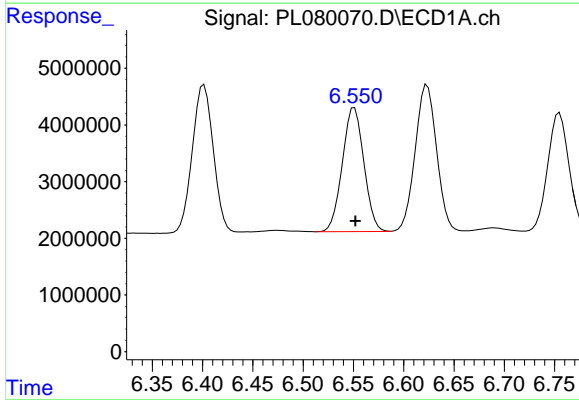
R.T.: 6.623 min  
Delta R.T.: 0.000 min  
Response: 38327612  
Conc: 24.67 ng/ml

Instrument :  
ECD\_P  
ClientSampleId :



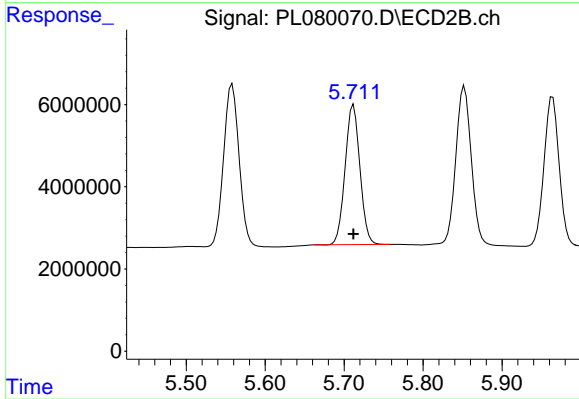
#15 Endosulfan II

R.T.: 5.852 min  
Delta R.T.: 0.000 min  
Response: 53307471  
Conc: 23.51 ng/ml



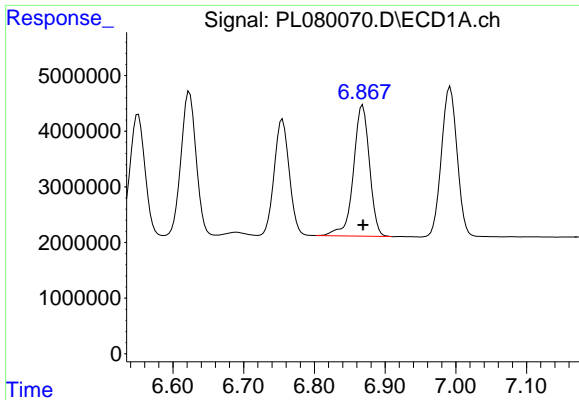
#16 4,4'-DDD

R.T.: 6.551 min  
Delta R.T.: 0.000 min  
Response: 32500611  
Conc: 23.81 ng/ml



#16 4,4'-DDD

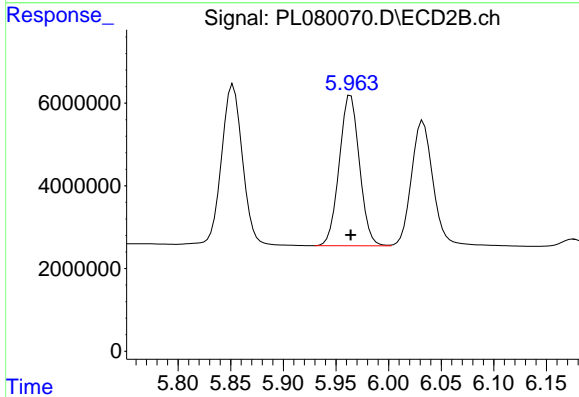
R.T.: 5.712 min  
Delta R.T.: 0.000 min  
Response: 44444113  
Conc: 22.44 ng/ml



#17 4,4'-DDT

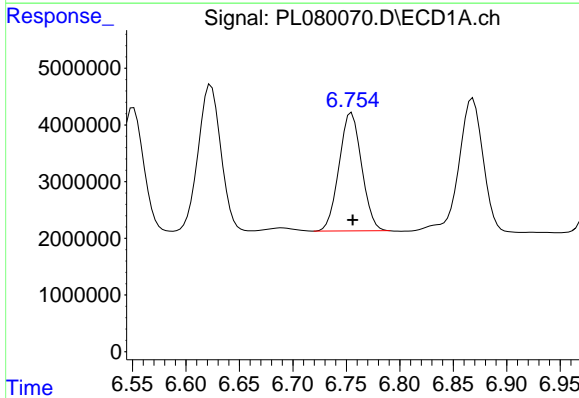
R.T.: 6.868 min  
 Delta R.T.: 0.000 min  
 Response: 37170259  
 Conc: 24.11 ng/ml

Instrument :  
 ECD\_P  
 ClientSampleId :



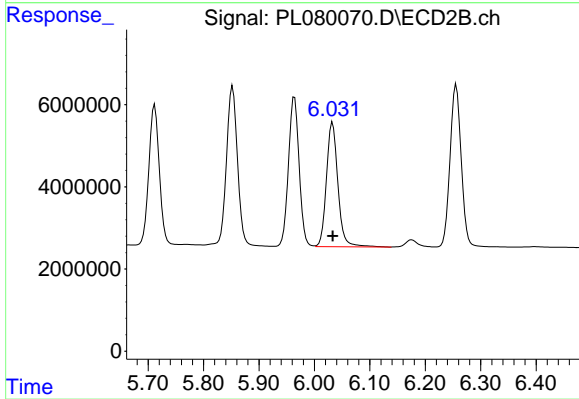
#17 4,4'-DDT

R.T.: 5.964 min  
 Delta R.T.: 0.000 min  
 Response: 48755741  
 Conc: 22.70 ng/ml



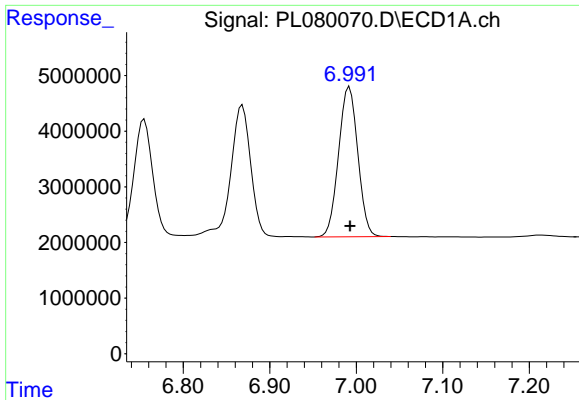
#18 Endrin aldehyde

R.T.: 6.755 min  
 Delta R.T.: -0.001 min  
 Response: 30659551  
 Conc: 24.73 ng/ml



#18 Endrin aldehyde

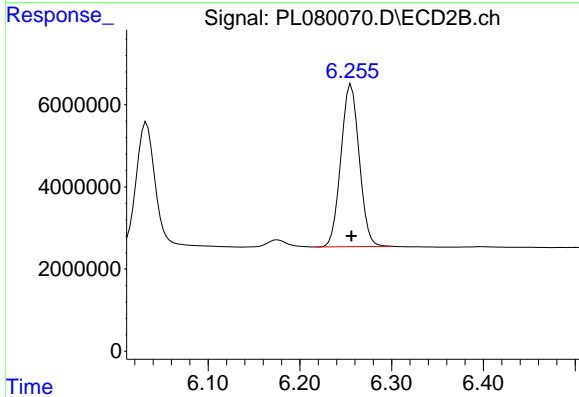
R.T.: 6.033 min  
 Delta R.T.: 0.000 min  
 Response: 43600854  
 Conc: 23.92 ng/ml



#19 Endosulfan Sulfate

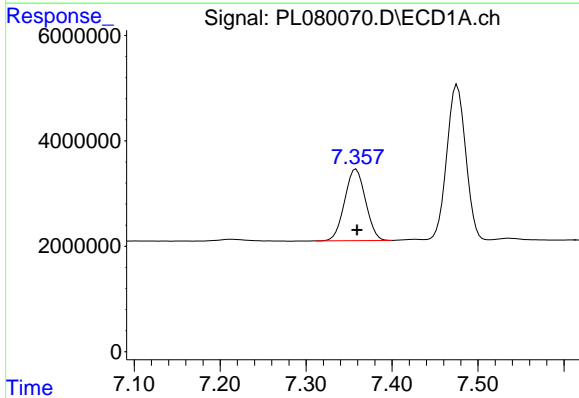
R.T.: 6.992 min  
 Delta R.T.: 0.000 min  
 Response: 41412152  
 Conc: 24.95 ng/ml

Instrument :  
 ECD\_P  
 ClientSampleId :



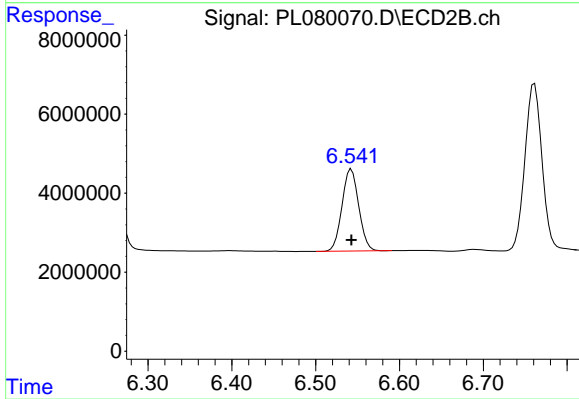
#19 Endosulfan Sulfate

R.T.: 6.256 min  
 Delta R.T.: 0.000 min  
 Response: 54735399  
 Conc: 23.72 ng/ml



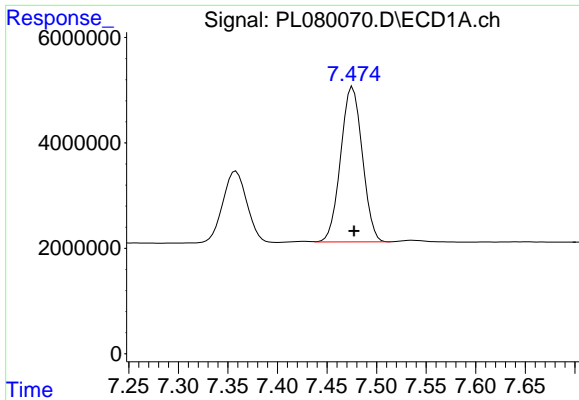
#20 Methoxychlor

R.T.: 7.358 min  
 Delta R.T.: -0.001 min  
 Response: 22931661  
 Conc: 25.10 ng/ml



#20 Methoxychlor

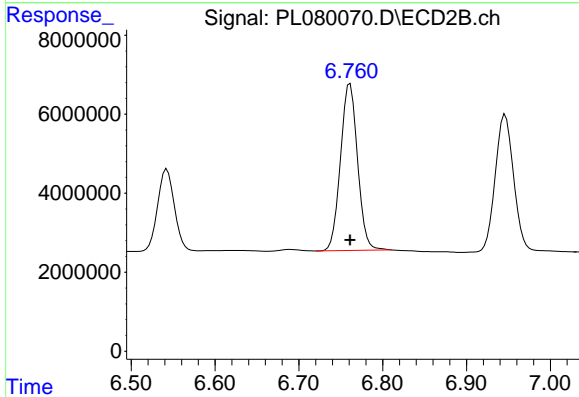
R.T.: 6.543 min  
 Delta R.T.: 0.000 min  
 Response: 28807021  
 Conc: 24.14 ng/ml



#21 Endrin ketone

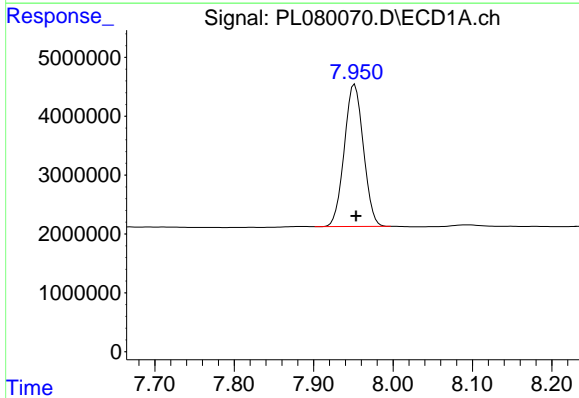
R.T.: 7.476 min  
 Delta R.T.: -0.001 min  
 Response: 44815289  
 Conc: 24.49 ng/ml

Instrument :  
 ECD\_P  
 ClientSampleId :



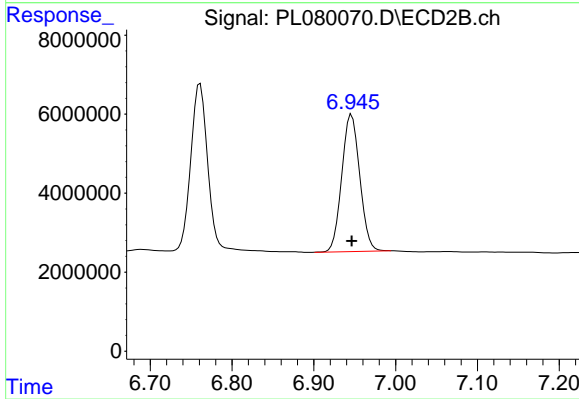
#21 Endrin ketone

R.T.: 6.761 min  
 Delta R.T.: 0.000 min  
 Response: 59875716  
 Conc: 23.53 ng/ml



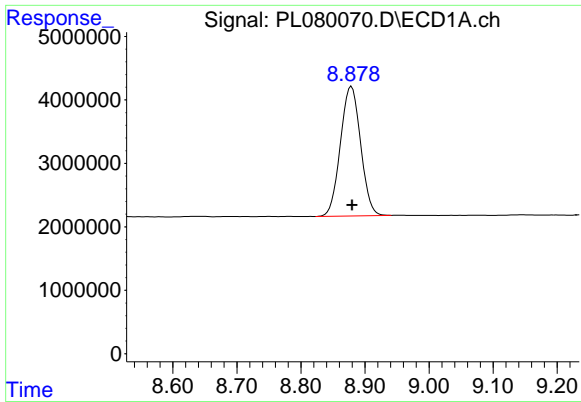
#22 Mirex

R.T.: 7.952 min  
 Delta R.T.: -0.001 min  
 Response: 40442581  
 Conc: 26.05 ng/ml



#22 Mirex

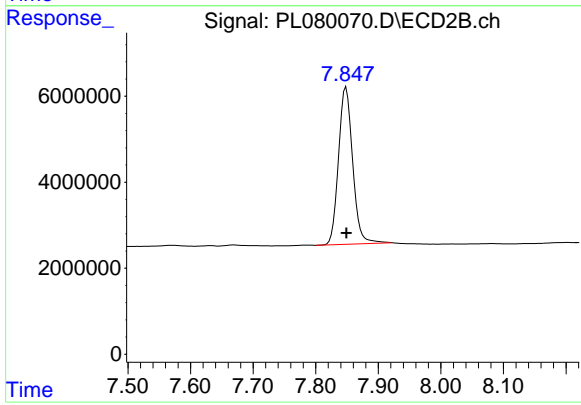
R.T.: 6.946 min  
 Delta R.T.: 0.000 min  
 Response: 52798770  
 Conc: 24.91 ng/ml



#28 Decachlorobiphenyl

R.T.: 8.879 min  
Delta R.T.: 0.000 min  
Response: 44689683  
Conc: 25.93 ng/ml

Instrument :  
ECD\_P  
ClientSampleId :



#28 Decachlorobiphenyl

R.T.: 7.849 min  
Delta R.T.: 0.000 min  
Response: 57587978  
Conc: 25.15 ng/ml