

Data Path : Z:\pestpcbsrv\HPCHEM1\ECD_P\Data\PP010522\
 Data File : PP042523.D
 Signal(s) : Signal #1: ECD1A.CH Signal #2: ECD2B.CH
 Acq On : 05 Jan 2022 9:40
 Operator : AJ\MA
 Sample : HEXANE
 Misc :
 ALS Vial : 1 Sample Multiplier: 1

Instrument :
 ECD_P
 ClientSampleId :

Integration File signal 1: autoint1.e
 Integration File signal 2: autoint2.e
 Quant Time: Jan 05 12:53:28 2022
 Quant Method : Z:\pestpcbsrv\HPCHEM1\ECD_P\methods\PP010422.M
 Quant Title : GC EXTRACTABLES
 QLast Update : Wed Jan 05 12:01:35 2022
 Response via : Initial Calibration
 Integrator: ChemStation 6890 Scale Mode: Small noise peaks clipped

Volume Inj. : 2 µl
 Signal #1 Phase : ZB-MR1 Signal #2 Phase: ZB-MR2
 Signal #1 Info : 30Mx0.32mmx 0.50µ Signal #2 Info : 30M x 0.32mm x 0.25µm

Compound	RT#1	RT#2	Resp#1	Resp#2	ng/ml	ng/ml
System Monitoring Compounds						
2) SA Decachlor...	10.811	0.000	2117	0	0.180	N.D. #
Target Compounds						
7) L1 AR-1016-5	6.699	0.000	843	0	1.952	N.D. #
20) L4 AR-1242-5	7.157	6.217f	8194	111587	24.864	152.134 #
23) L5 AR-1248-3	6.699	0.000	843	0	1.482	N.D. #
24) L5 AR-1248-4	7.119	0.000	23519	0	42.057	N.D. #
25) L5 AR-1248-5	7.157	6.217f	8194	111587	14.956	112.468 #
26) L6 AR-1254-1	7.065f	6.217f	44135	111587	72.447	72.467
27) L6 AR-1254-2	7.332	0.000	1964	0	2.139	N.D. #
28) L6 AR-1254-3	7.696	6.769	110969	8044	121.137	3.851 #
29) L6 AR-1254-4	8.000	0.000	102355	0	170.882	N.D. #
31) L7 AR-1260-1	7.876	0.000	12986	0	21.367	N.D. #
32) L7 AR-1260-2	8.102f	7.089f	101968	197542	144.966	129.938
33) L7 AR-1260-3	8.481f	0.000	103259	0	186.378	N.D. #
36) L8 AR-1262-1	8.481	0.000	103259	0	131.900	N.D. #
38) L8 AR-1262-3	9.367f	8.304f	2719	129579	4.125	121.186 #
39) L8 AR-1262-4	9.465f	0.000	8237	0	17.043	N.D. #
40) L8 AR-1262-5	10.074	0.000	6398	0	13.113	N.D. #
41) L9 AR-1268-1	9.367f	8.304f	2719	129579	1.662	42.767 #
42) L9 AR-1268-2	9.465f	0.000	8237	0	5.446	N.D. #
43) L9 AR-1268-3	9.671	0.000	8446	0	6.276	N.D. #
44) L9 AR-1268-4	10.074	0.000	6398	0	11.687	N.D. #
45) L9 AR-1268-5	10.487	0.000	12649	0	2.834	N.D. #

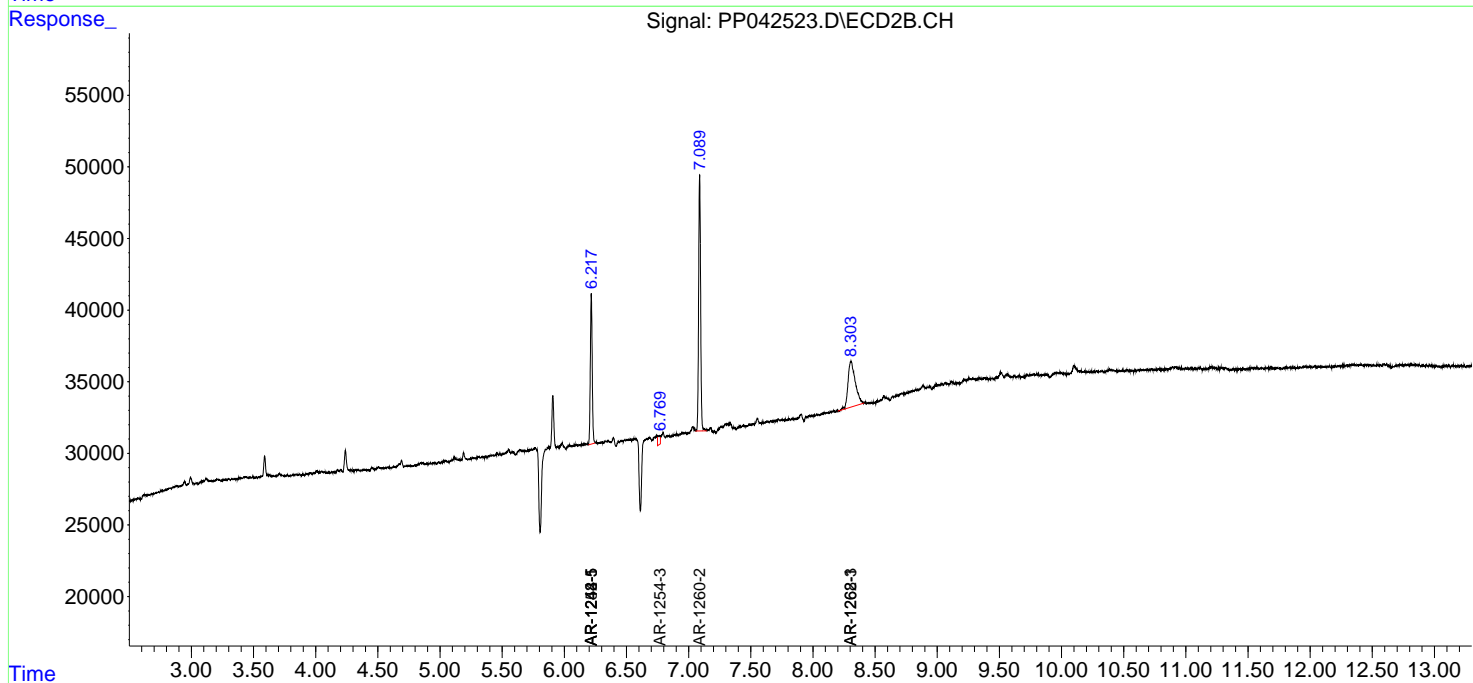
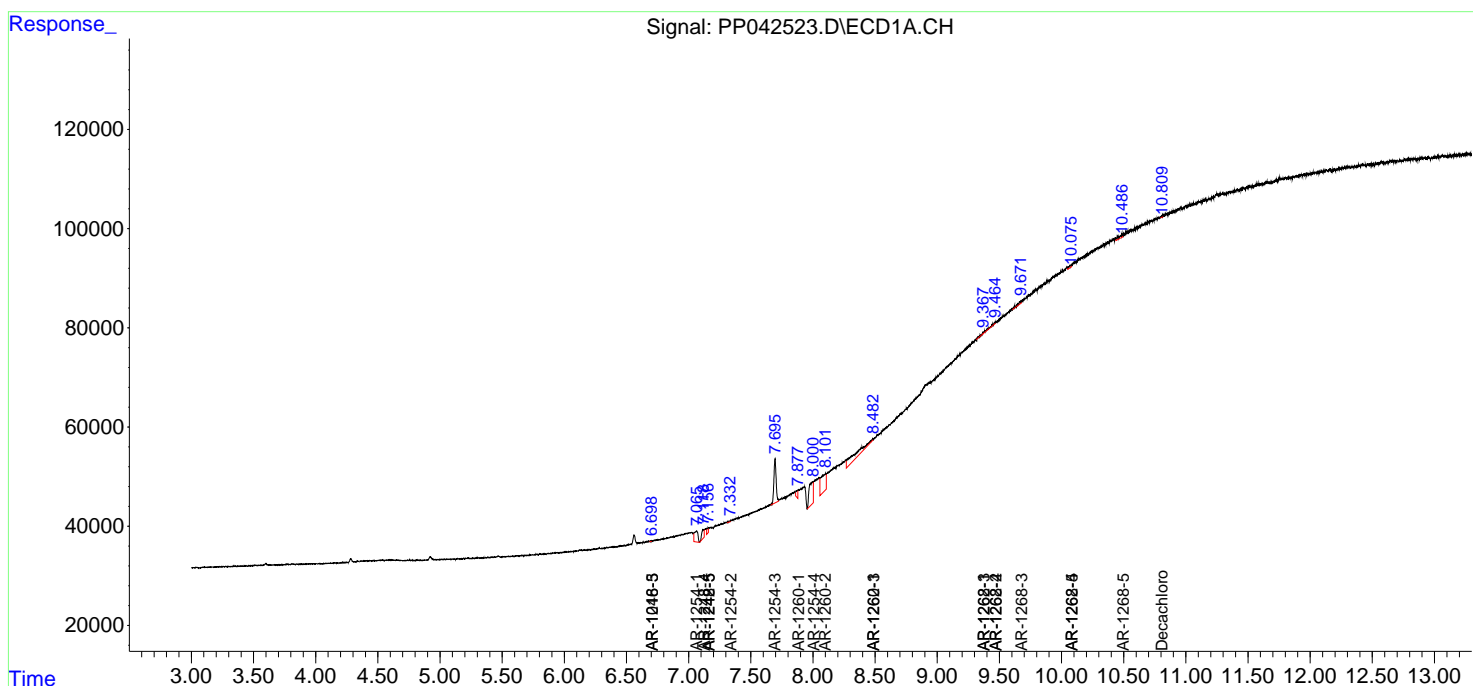
(f)=RT Delta > 1/2 Window (#)=Amounts differ by > 25% (m)=manual int.

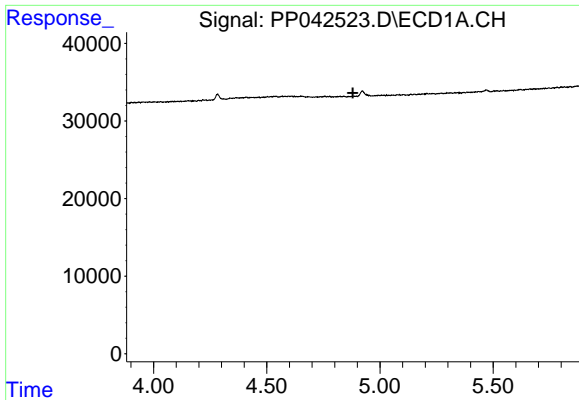
Data Path : Z:\pestpcbsrv\HPCHEM1\ECD_P\Data\PP010522\
 Data File : PP042523.D
 Signal(s) : Signal #1: ECD1A.CH Signal #2: ECD2B.CH
 Acq On : 05 Jan 2022 9:40
 Operator : AJ\MA
 Sample : HEXANE
 Misc :
 ALS Vial : 1 Sample Multiplier: 1

Instrument :
 ECD_P
 ClientSampleId :

Integration File signal 1: autoint1.e
 Integration File signal 2: autoint2.e
 Quant Time: Jan 05 12:53:28 2022
 Quant Method : Z:\pestpcbsrv\HPCHEM1\ECD_P\methods\PP010422.M
 Quant Title : GC EXTRACTABLES
 QLast Update : Wed Jan 05 12:01:35 2022
 Response via : Initial Calibration
 Integrator: ChemStation 6890 Scale Mode: Small noise peaks clipped

Volume Inj. : 2 µl
 Signal #1 Phase : ZB-MR1 Signal #2 Phase: ZB-MR2
 Signal #1 Info : 30Mx0.32mmx 0.50µ Signal #2 Info : 30M x 0.32mm x 0.25µm

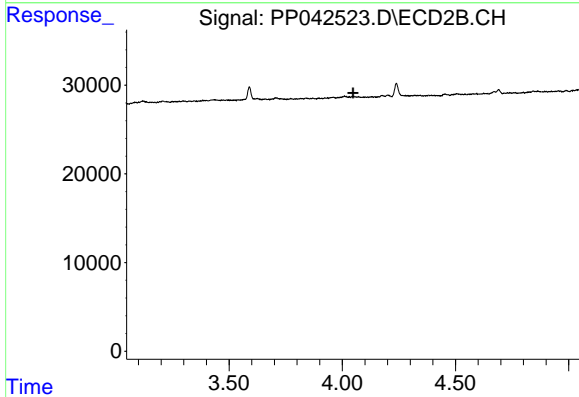




#1 Tetrachloro-m-xylene

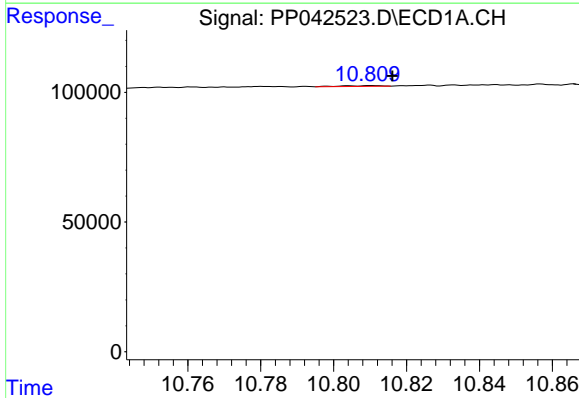
R.T.: 0.000 min
 Exp R.T.: 4.880 min
 Response: 0
 Conc: N.D.

Instrument :
 ECD_P
 ClientSampleId :



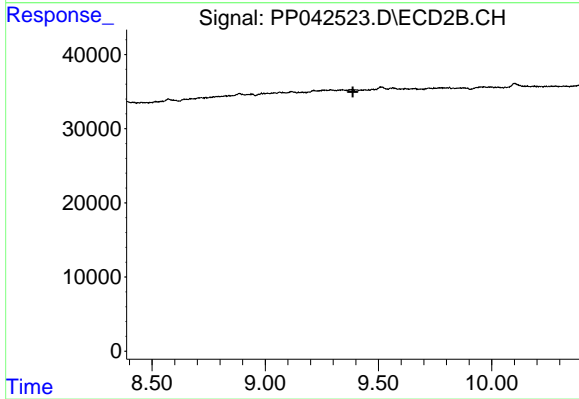
#1 Tetrachloro-m-xylene

R.T.: 0.000 min
 Exp R.T.: 4.047 min
 Response: 0
 Conc: N.D.



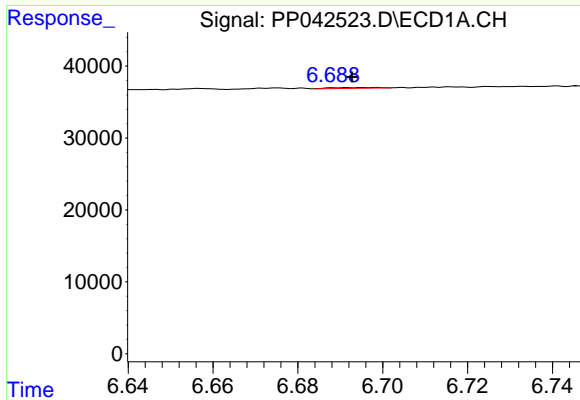
#2 Decachlorobiphenyl

R.T.: 10.811 min
 Delta R.T.: -0.006 min
 Response: 2117
 Conc: 0.18 ng/ml



#2 Decachlorobiphenyl

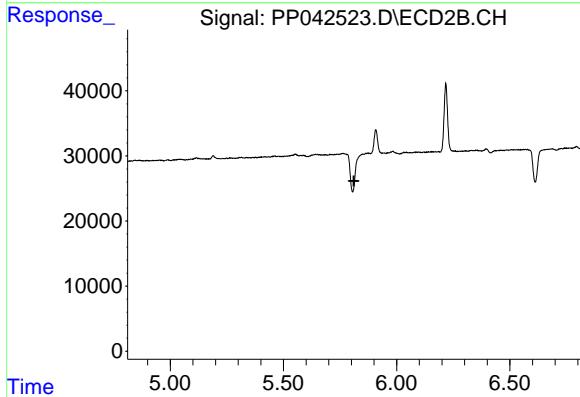
R.T.: 0.000 min
 Exp R.T.: 9.387 min
 Response: 0
 Conc: N.D.



#7 AR-1016-5

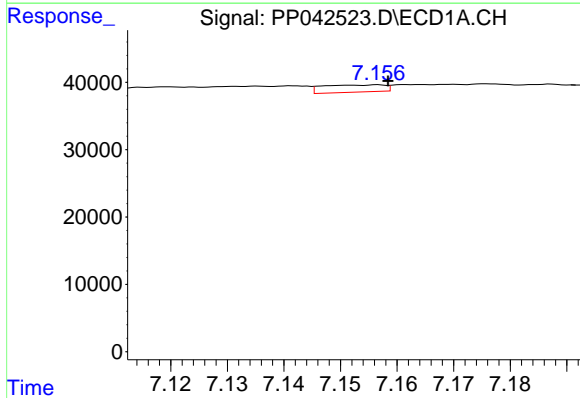
R.T.: 6.699 min
 Delta R.T.: 0.006 min
 Response: 843
 Conc: 1.95 ng/ml

Instrument :
 ECD_P
 ClientSampleId :



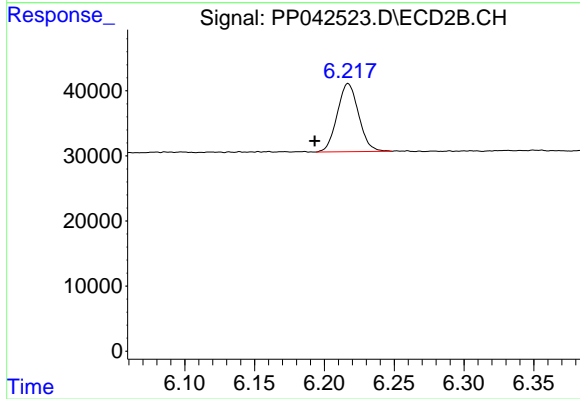
#7 AR-1016-5

R.T.: 0.000 min
 Exp R.T. : 5.811 min
 Response: 0
 Conc: N.D.



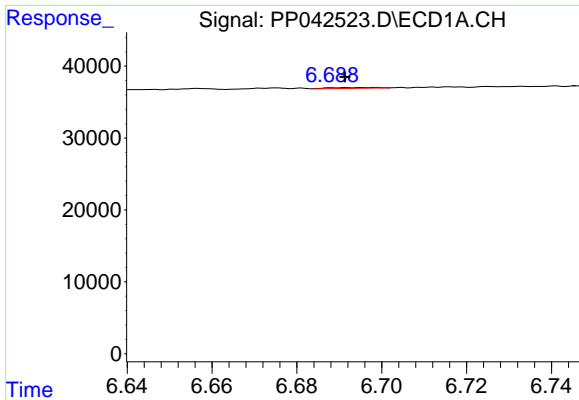
#20 AR-1242-5

R.T.: 7.157 min
 Delta R.T.: -0.002 min
 Response: 8194
 Conc: 24.86 ng/ml



#20 AR-1242-5

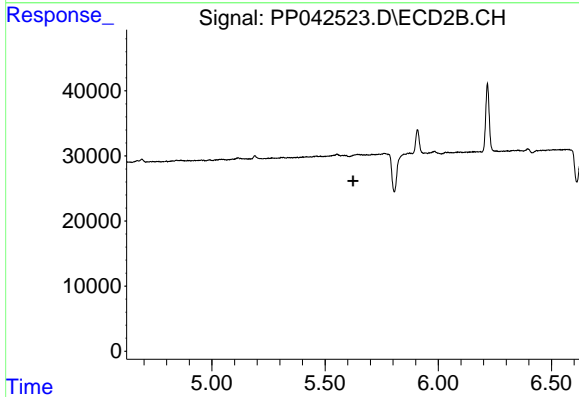
R.T.: 6.217 min
 Delta R.T.: 0.024 min
 Response: 111587
 Conc: 152.13 ng/ml



#23 AR-1248-3

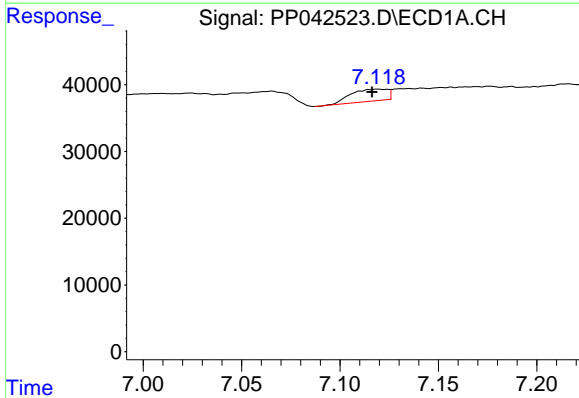
R.T.: 6.699 min
 Delta R.T.: 0.007 min
 Response: 843
 Conc: 1.48 ng/ml

Instrument :
 ECD_P
 ClientSampleId :



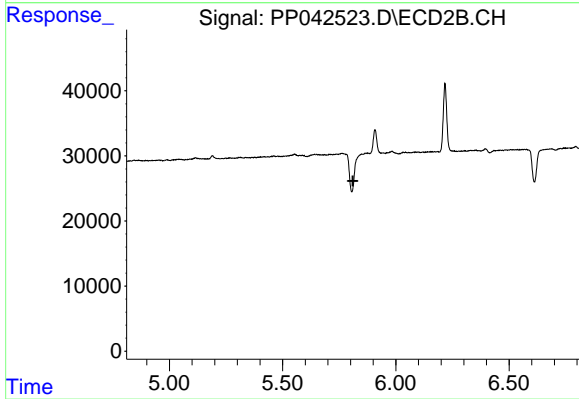
#23 AR-1248-3

R.T.: 0.000 min
 Exp R.T. : 5.623 min
 Response: 0
 Conc: N.D.



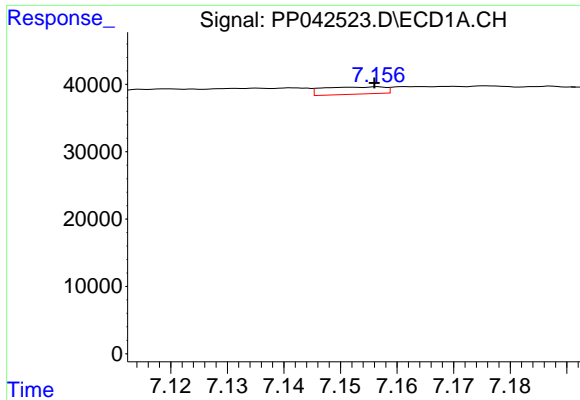
#24 AR-1248-4

R.T.: 7.119 min
 Delta R.T.: 0.003 min
 Response: 23519
 Conc: 42.06 ng/ml



#24 AR-1248-4

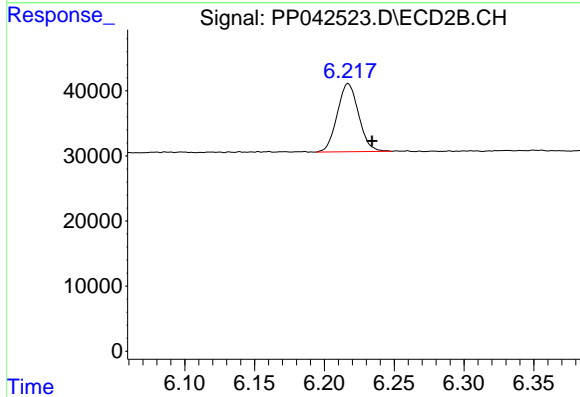
R.T.: 0.000 min
 Exp R.T. : 5.810 min
 Response: 0
 Conc: N.D.



#25 AR-1248-5

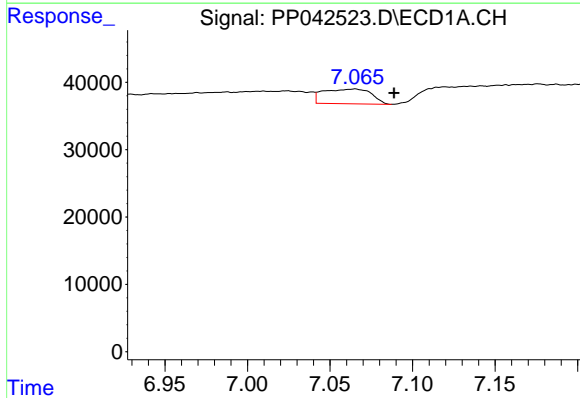
R.T.: 7.157 min
 Delta R.T.: 0.000 min
 Response: 8194
 Conc: 14.96 ng/ml

Instrument :
 ECD_P
 ClientSampleId :



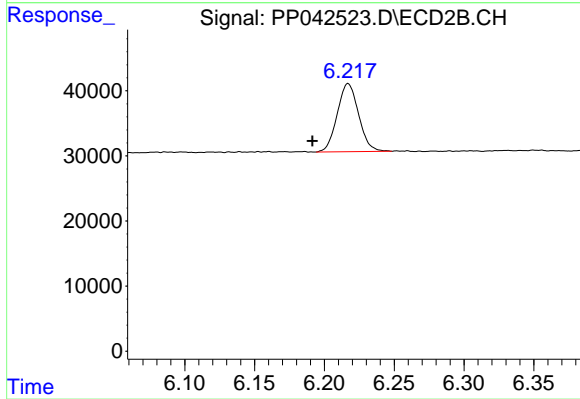
#25 AR-1248-5

R.T.: 6.217 min
 Delta R.T.: -0.017 min
 Response: 111587
 Conc: 112.47 ng/ml



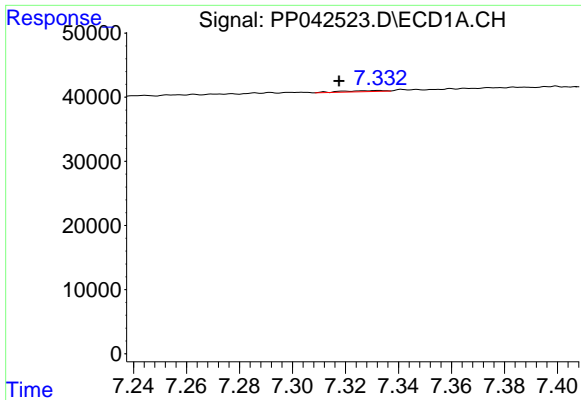
#26 AR-1254-1

R.T.: 7.065 min
 Delta R.T.: -0.023 min
 Response: 44135
 Conc: 72.45 ng/ml



#26 AR-1254-1

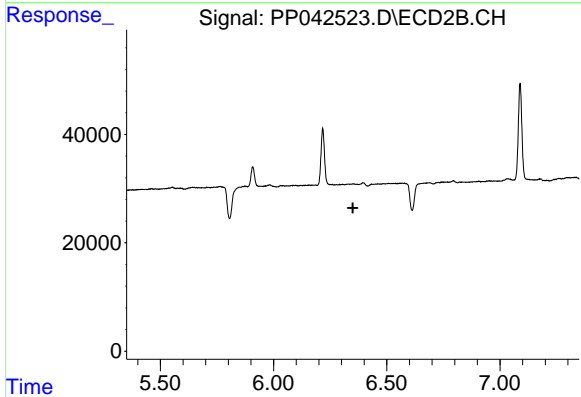
R.T.: 6.217 min
 Delta R.T.: 0.026 min
 Response: 111587
 Conc: 72.47 ng/ml



#27 AR-1254-2

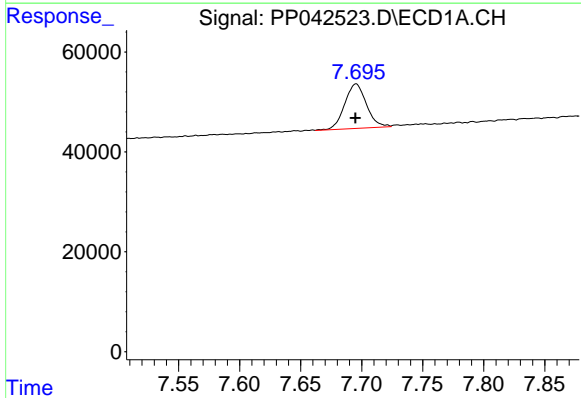
R.T.: 7.332 min
 Delta R.T.: 0.015 min
 Response: 1964
 Conc: 2.14 ng/ml

Instrument :
 ECD_P
 ClientSampleId :



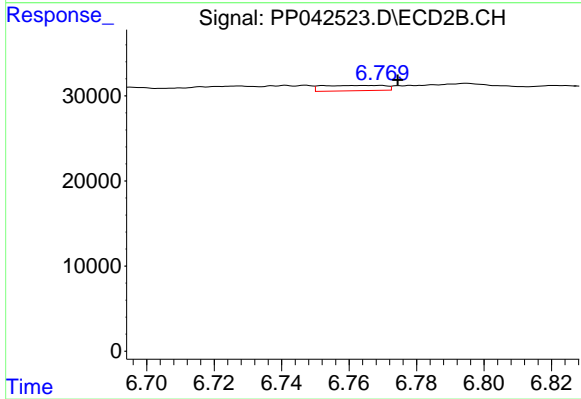
#27 AR-1254-2

R.T.: 0.000 min
 Exp R.T. : 6.350 min
 Response: 0
 Conc: N.D.



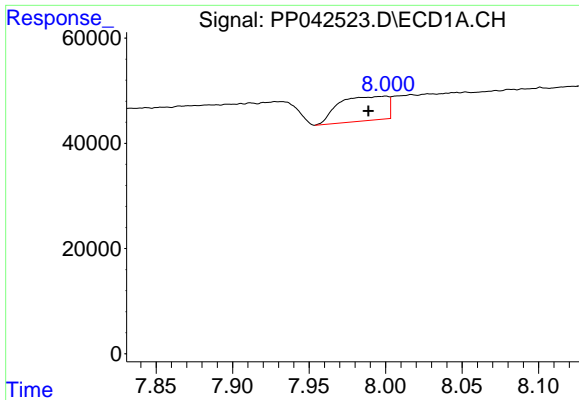
#28 AR-1254-3

R.T.: 7.696 min
 Delta R.T.: 0.000 min
 Response: 110969
 Conc: 121.14 ng/ml



#28 AR-1254-3

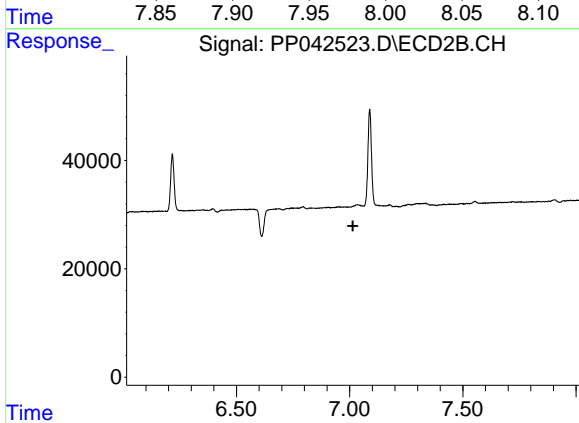
R.T.: 6.769 min
 Delta R.T.: -0.005 min
 Response: 8044
 Conc: 3.85 ng/ml



#29 AR-1254-4

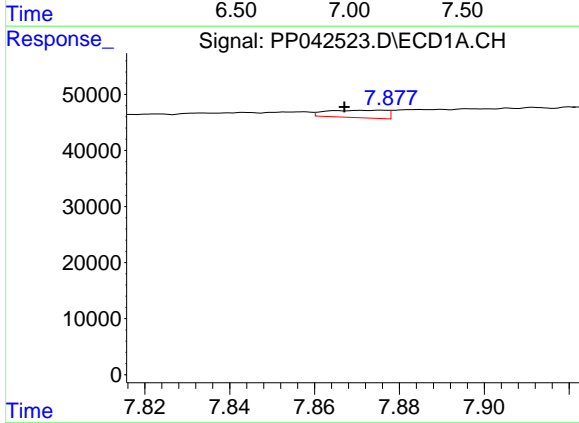
R.T.: 8.000 min
 Delta R.T.: 0.011 min
 Response: 102355
 Conc: 170.88 ng/ml

Instrument :
 ECD_P
 ClientSampleId :



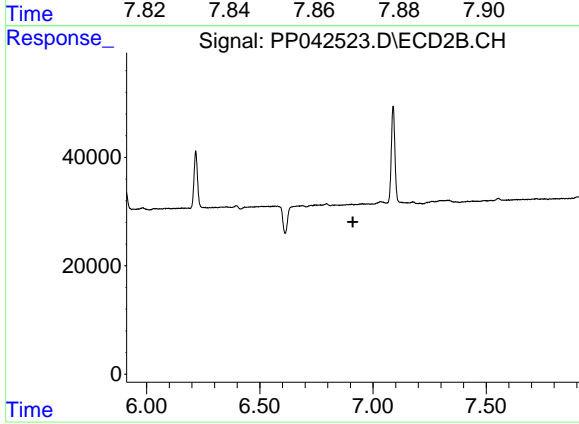
#29 AR-1254-4

R.T.: 0.000 min
 Exp R.T. : 7.014 min
 Response: 0
 Conc: N.D.



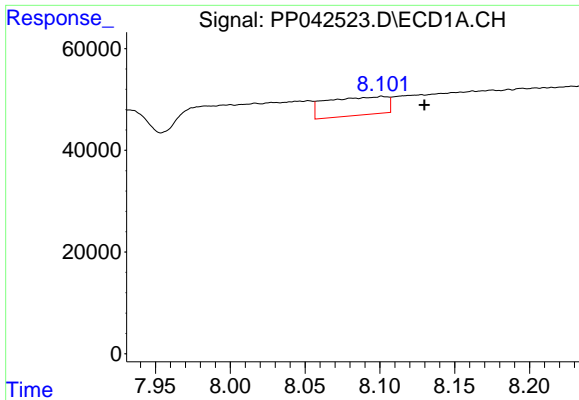
#31 AR-1260-1

R.T.: 7.876 min
 Delta R.T.: 0.009 min
 Response: 12986
 Conc: 21.37 ng/ml



#31 AR-1260-1

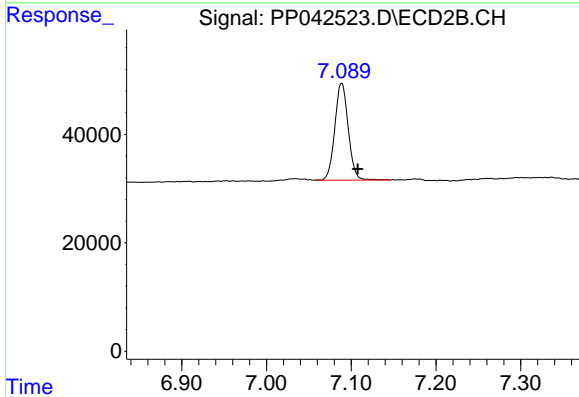
R.T.: 0.000 min
 Exp R.T. : 6.911 min
 Response: 0
 Conc: N.D.



#32 AR-1260-2

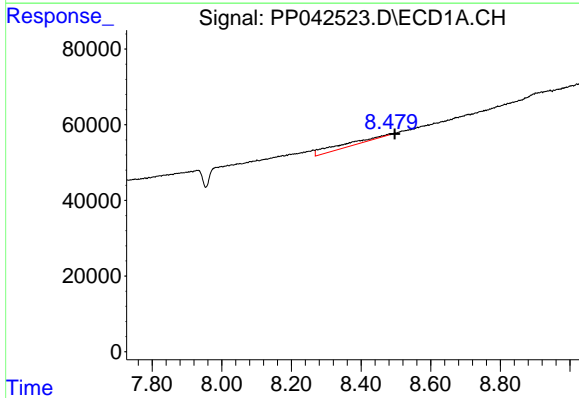
R.T.: 8.102 min
 Delta R.T.: -0.028 min
 Response: 101968
 Conc: 144.97 ng/ml

Instrument :
 ECD_P
 ClientSampleId :



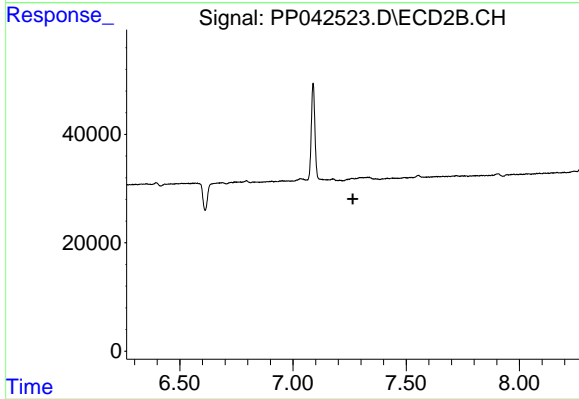
#32 AR-1260-2

R.T.: 7.089 min
 Delta R.T.: -0.019 min
 Response: 197542
 Conc: 129.94 ng/ml



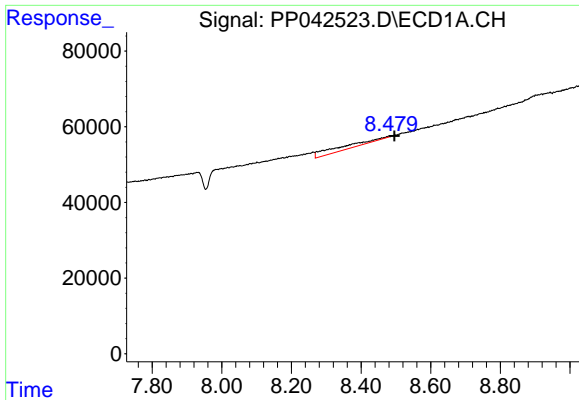
#33 AR-1260-3

R.T.: 8.481 min
 Delta R.T.: -0.016 min
 Response: 103259
 Conc: 186.38 ng/ml



#33 AR-1260-3

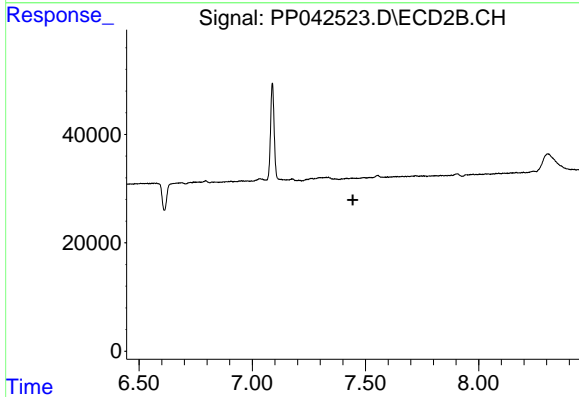
R.T.: 0.000 min
 Exp R.T. : 7.264 min
 Response: 0
 Conc: N.D.



#36 AR-1262-1

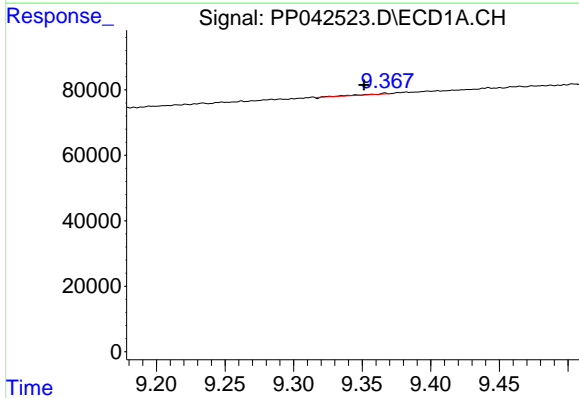
R.T.: 8.481 min
 Delta R.T.: -0.015 min
 Response: 103259
 Conc: 131.90 ng/ml

Instrument :
 ECD_P
 ClientSampleId :



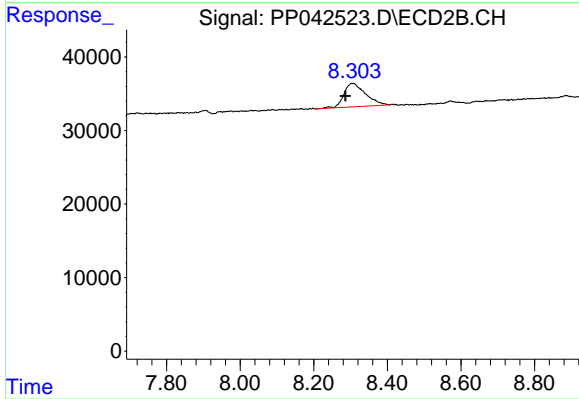
#36 AR-1262-1

R.T.: 0.000 min
 Exp R.T. : 7.444 min
 Response: 0
 Conc: N.D.



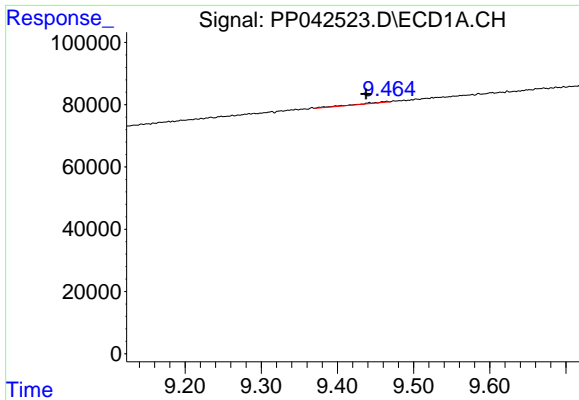
#38 AR-1262-3

R.T.: 9.367 min
 Delta R.T.: 0.016 min
 Response: 2719
 Conc: 4.12 ng/ml



#38 AR-1262-3

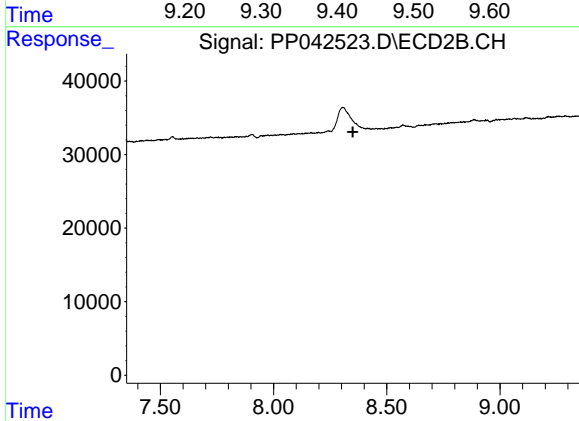
R.T.: 8.304 min
 Delta R.T.: 0.018 min
 Response: 129579
 Conc: 121.19 ng/ml



#39 AR-1262-4

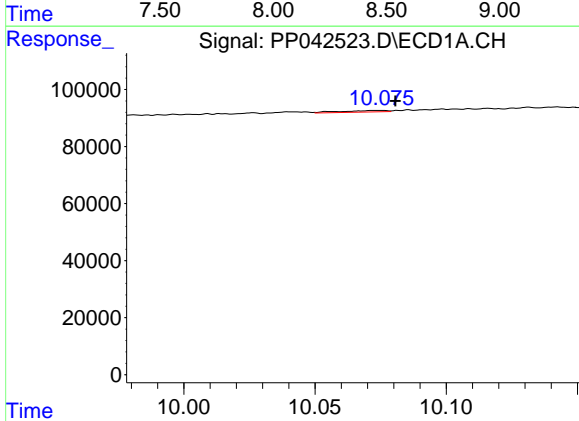
R.T.: 9.465 min
 Delta R.T.: 0.027 min
 Response: 8237
 Conc: 17.04 ng/ml

Instrument :
 ECD_P
 ClientSampleId :



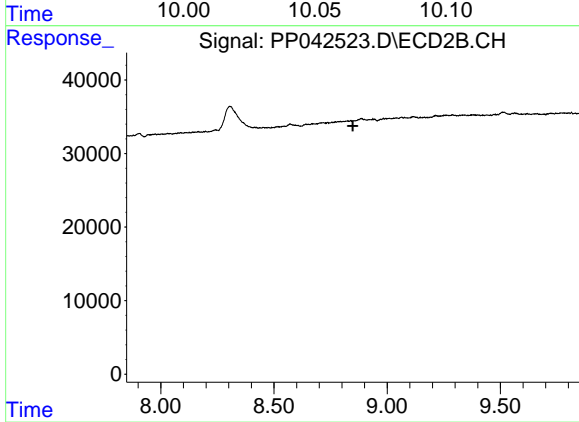
#39 AR-1262-4

R.T.: 0.000 min
 Exp R.T. : 8.350 min
 Response: 0
 Conc: N.D.



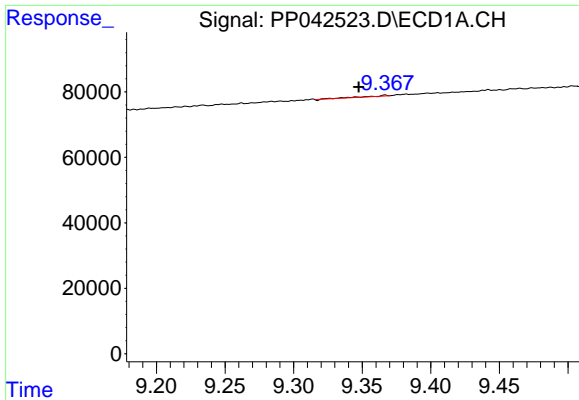
#40 AR-1262-5

R.T.: 10.074 min
 Delta R.T.: -0.006 min
 Response: 6398
 Conc: 13.11 ng/ml



#40 AR-1262-5

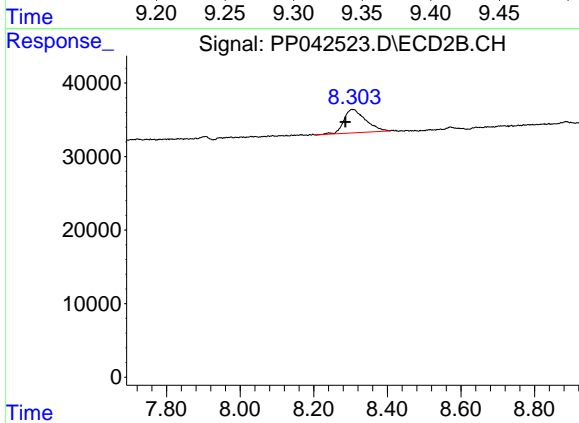
R.T.: 0.000 min
 Exp R.T. : 8.849 min
 Response: 0
 Conc: N.D.



#41 AR-1268-1

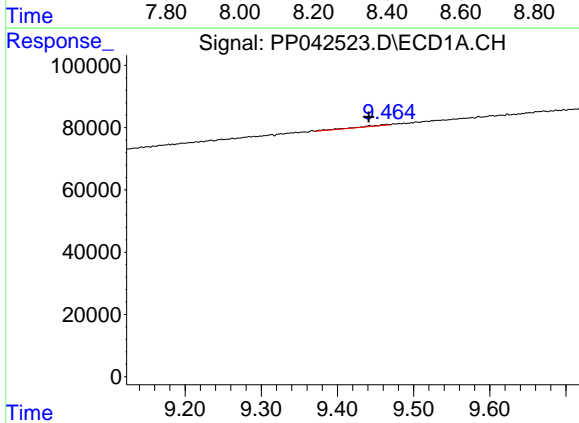
R.T.: 9.367 min
 Delta R.T.: 0.019 min
 Response: 2719
 Conc: 1.66 ng/ml

Instrument :
 ECD_P
 ClientSampleId :



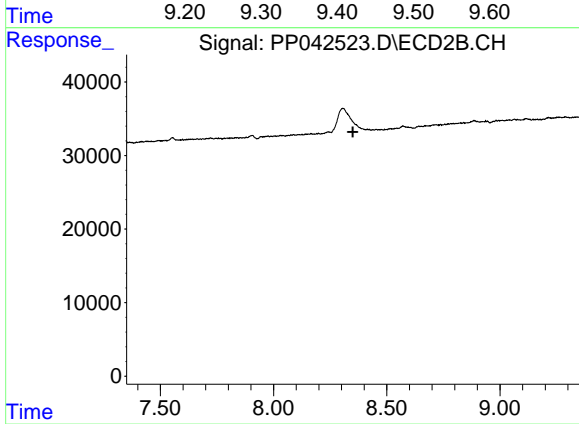
#41 AR-1268-1

R.T.: 8.304 min
 Delta R.T.: 0.018 min
 Response: 129579
 Conc: 42.77 ng/ml



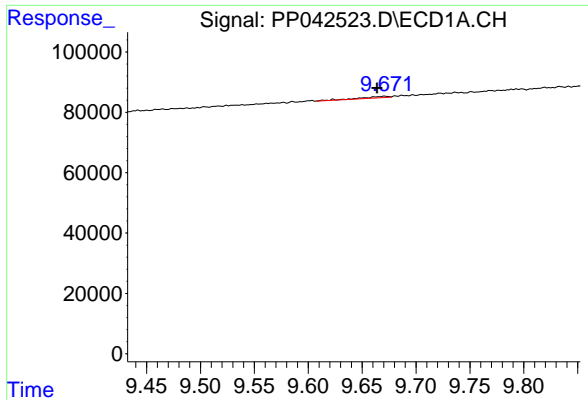
#42 AR-1268-2

R.T.: 9.465 min
 Delta R.T.: 0.024 min
 Response: 8237
 Conc: 5.45 ng/ml



#42 AR-1268-2

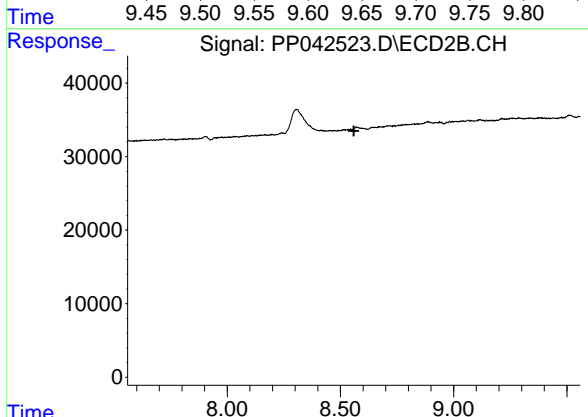
R.T.: 0.000 min
 Exp R.T. : 8.351 min
 Response: 0
 Conc: N.D.



#43 AR-1268-3

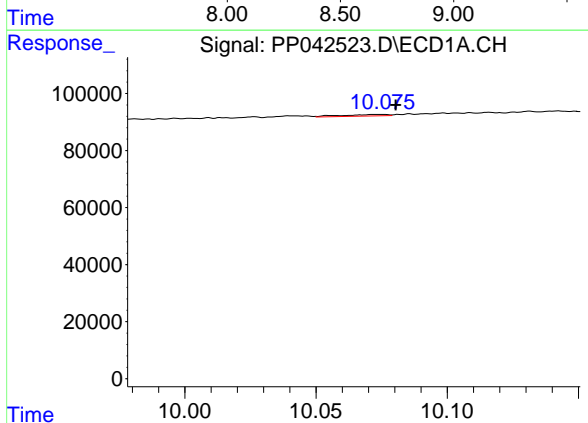
R.T.: 9.671 min
 Delta R.T.: 0.007 min
 Response: 8446
 Conc: 6.28 ng/ml

Instrument :
 ECD_P
 ClientSampleId :



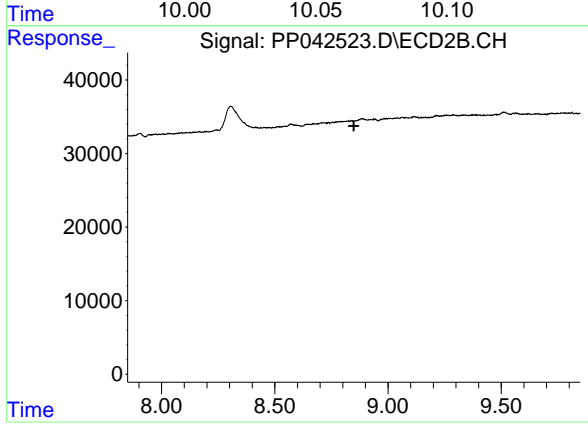
#43 AR-1268-3

R.T.: 0.000 min
 Exp R.T. : 8.560 min
 Response: 0
 Conc: N.D.



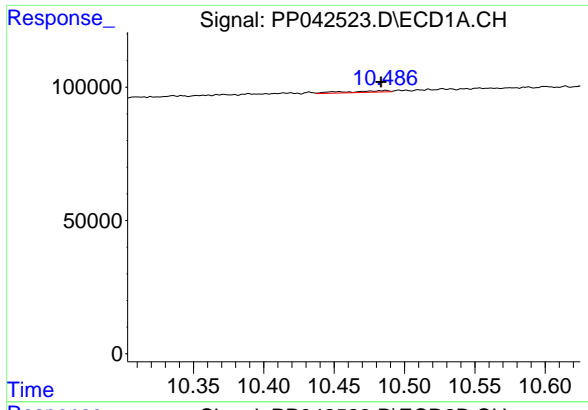
#44 AR-1268-4

R.T.: 10.074 min
 Delta R.T.: -0.006 min
 Response: 6398
 Conc: 11.69 ng/ml



#44 AR-1268-4

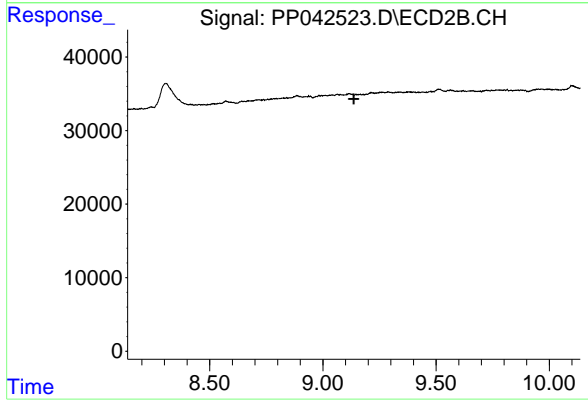
R.T.: 0.000 min
 Exp R.T. : 8.849 min
 Response: 0
 Conc: N.D.



#45 AR-1268-5

R.T.: 10.487 min
 Delta R.T.: 0.004 min
 Response: 12649
 Conc: 2.83 ng/ml

Instrument :
 ECD_P
 ClientSampleId :



#45 AR-1268-5

R.T.: 0.000 min
 Exp R.T. : 9.137 min
 Response: 0
 Conc: N.D.