

Data Path : Z:\pestpcbsrv\HPCHEM1\ECD_P\Data\PP010522\
 Data File : PP042525.D
 Signal(s) : Signal #1: ECD1A.CH Signal #2: ECD2B.CH
 Acq On : 05 Jan 2022 10:13
 Operator : AJ\MA
 Sample : AR1242ICC1000
 Misc :
 ALS Vial : 3 Sample Multiplier: 1

Instrument :
 ECD_P
 ClientSampleId :

Integration File signal 1: autoint1.e
 Integration File signal 2: autoint2.e
 Quant Time: Jan 05 10:46:33 2022
 Quant Method : Z:\pestpcbsrv\HPCHEM1\ECD_P\methods\PP010422.M
 Quant Title : GC EXTRACTABLES
 QLast Update : Wed Jan 05 10:46:04 2022
 Response via : Initial Calibration
 Integrator: ChemStation 6890 Scale Mode: Small noise peaks clipped

Volume Inj. : 2 µl
 Signal #1 Phase : ZB-MR2 Signal #2 Phase: ZB-MR2
 Signal #1 Info : 30Mx0.32mmx 0.50µ Signal #2 Info : 30M x 0.32mm x 0.25µm

Compound	RT#1	RT#2	Resp#1	Resp#2	ng/ml	ng/ml

System Monitoring Compounds						
1) SA Tetrachlo...	4.880	4.048	1978234	2551415	93.224	92.530
2) SA Decachlor...	10.817	9.390	1071151	1803949	92.542	88.002
Target Compounds						
16) L4 AR-1242-1	6.184	5.314	441682	734437	908.511	872.980
17) L4 AR-1242-2	6.207	5.335	645384	1011302	918.164	892.993
18) L4 AR-1242-3	6.273	5.529	396577	589208	921.701	906.422
19) L4 AR-1242-4	6.378	5.624	331445	562131	941.770	885.917
20) L4 AR-1242-5	7.157	6.192	314573	664083	907.658	886.348

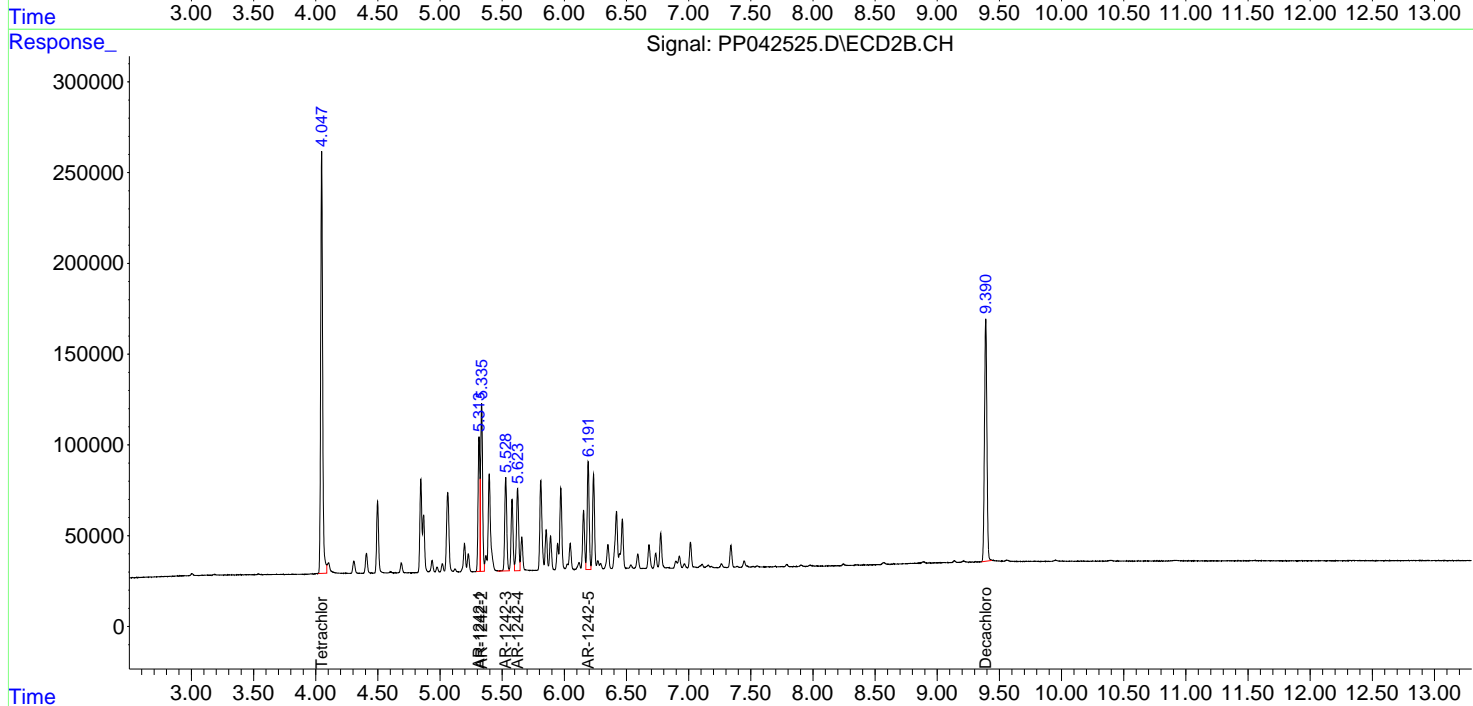
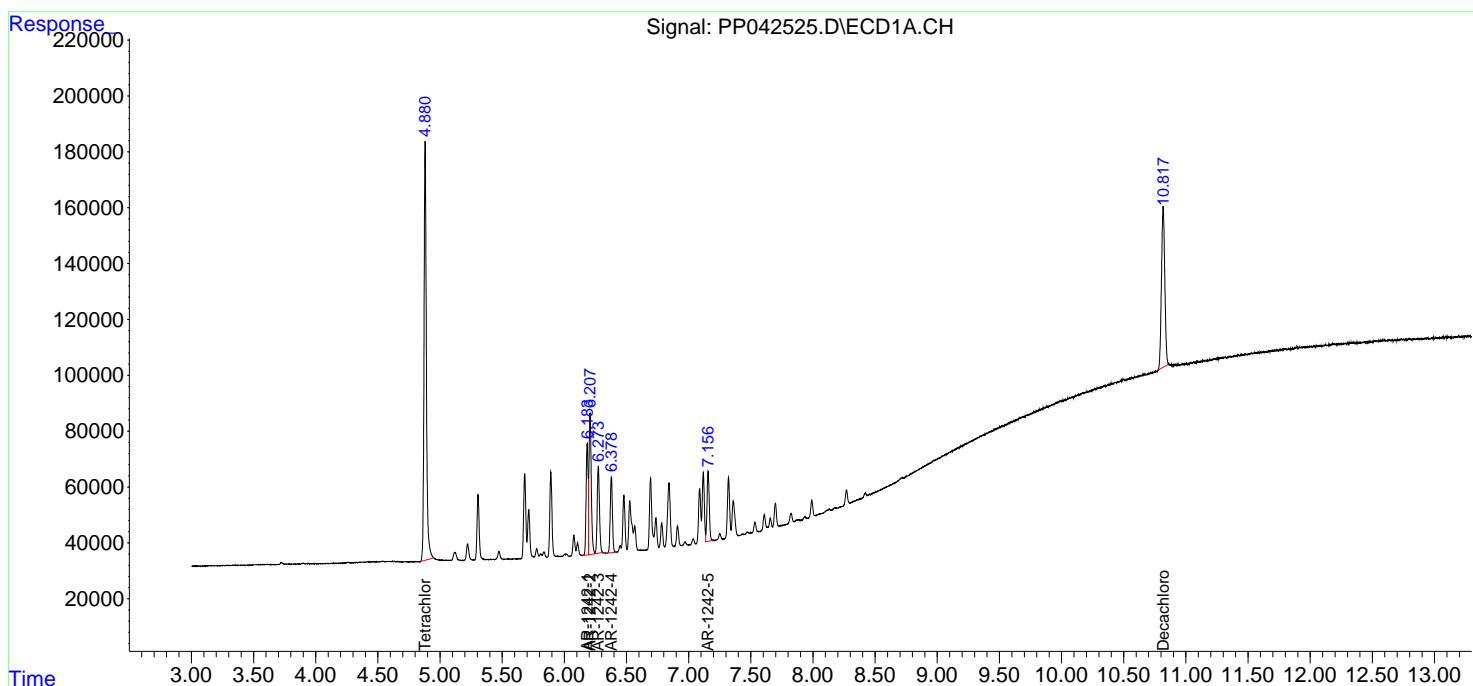
(f)=RT Delta > 1/2 Window (#)=Amounts differ by > 25% (m)=manual int.

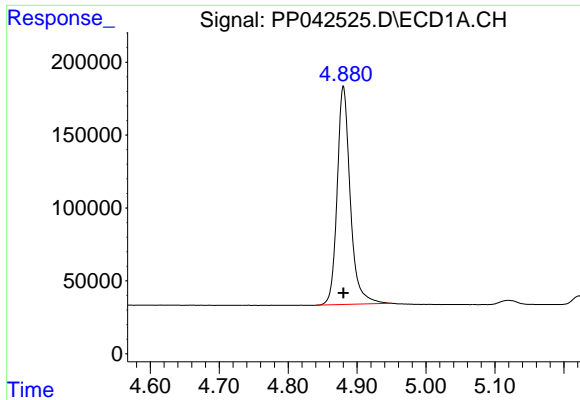
Data Path : Z:\pestpcbsrv\HPCHEM1\ECD_P\Data\PP010522\
 Data File : PP042525.D
 Signal(s) : Signal #1: ECD1A.CH Signal #2: ECD2B.CH
 Acq On : 05 Jan 2022 10:13
 Operator : AJ\MA
 Sample : AR1242ICC1000
 Misc :
 ALS Vial : 3 Sample Multiplier: 1

Instrument :
 ECD_P
 ClientSampleId :

Integration File signal 1: autoint1.e
 Integration File signal 2: autoint2.e
 Quant Time: Jan 05 10:46:33 2022
 Quant Method : Z:\pestpcbsrv\HPCHEM1\ECD_P\methods\PP010422.M
 Quant Title : GC EXTRACTABLES
 QLast Update : Wed Jan 05 10:46:04 2022
 Response via : Initial Calibration
 Integrator: ChemStation 6890 Scale Mode: Small noise peaks clipped

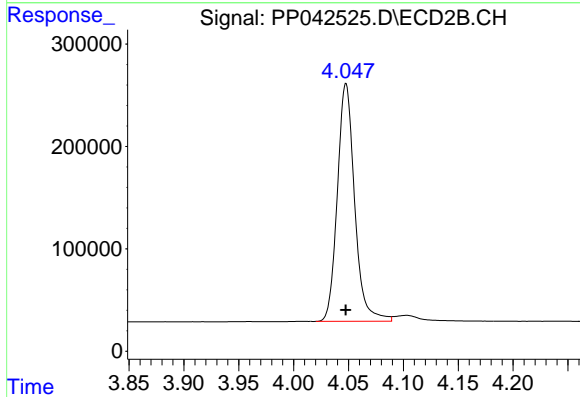
Volume Inj. : 2 µl
 Signal #1 Phase : ZB-MR1 Signal #2 Phase: ZB-MR2
 Signal #1 Info : 30Mx0.32mmx 0.50µ Signal #2 Info : 30M x 0.32mm x 0.25µm



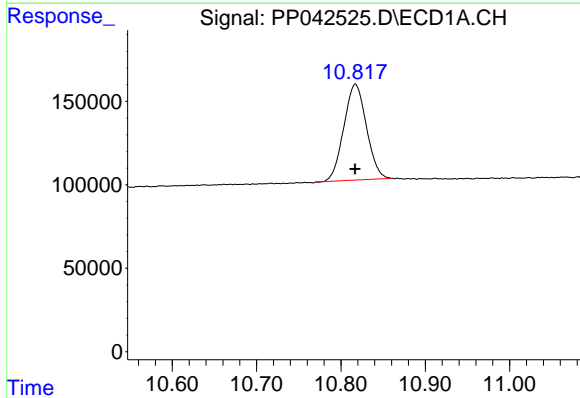


#1 Tetrachloro-m-xylene
 R.T.: 4.880 min
 Delta R.T.: 0.000 min
 Response: 1978234
 Conc: 93.22 ng/ml

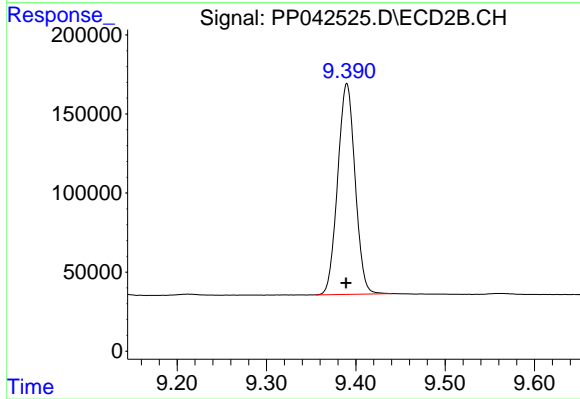
Instrument :
 ECD_P
 ClientSampleId :



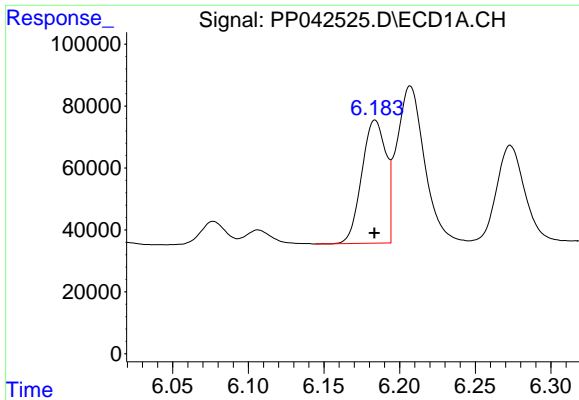
#1 Tetrachloro-m-xylene
 R.T.: 4.048 min
 Delta R.T.: 0.000 min
 Response: 2551415
 Conc: 92.53 ng/ml



#2 Decachlorobiphenyl
 R.T.: 10.817 min
 Delta R.T.: 0.000 min
 Response: 1071151
 Conc: 92.54 ng/ml



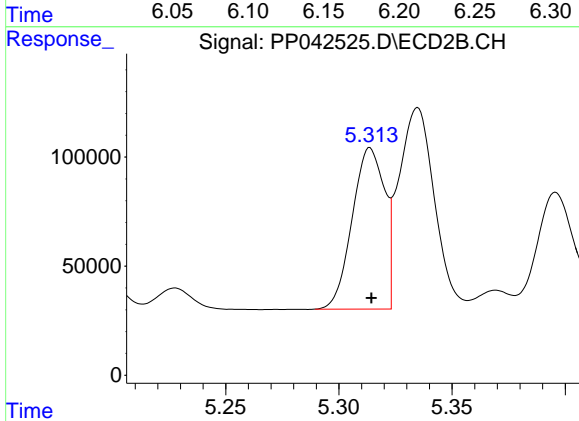
#2 Decachlorobiphenyl
 R.T.: 9.390 min
 Delta R.T.: 0.000 min
 Response: 1803949
 Conc: 88.00 ng/ml



#16 AR-1242-1

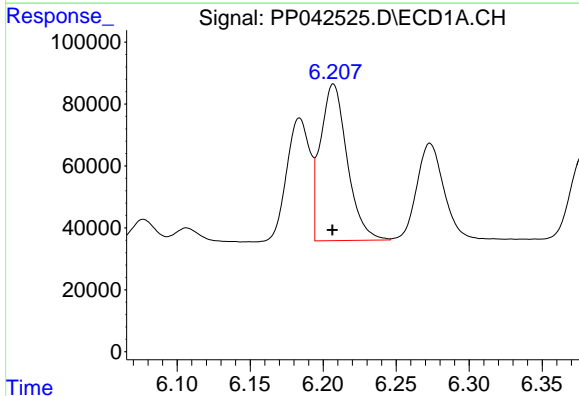
R.T.: 6.184 min
 Delta R.T.: 0.000 min
 Response: 441682
 Conc: 908.51 ng/ml

Instrument :
 ECD_P
 ClientSampleId :



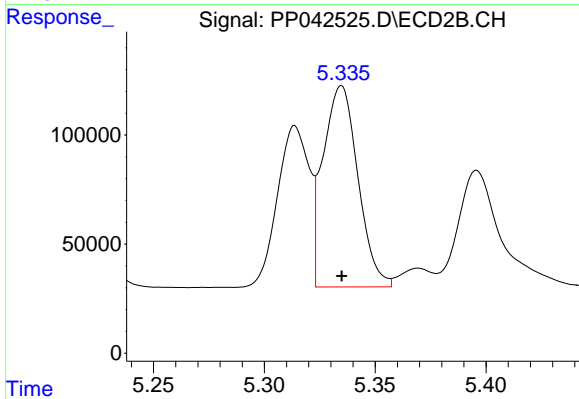
#16 AR-1242-1

R.T.: 5.314 min
 Delta R.T.: 0.000 min
 Response: 734437
 Conc: 872.98 ng/ml



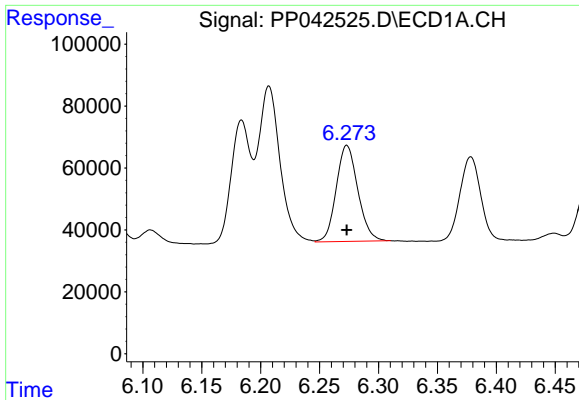
#17 AR-1242-2

R.T.: 6.207 min
 Delta R.T.: 0.000 min
 Response: 645384
 Conc: 918.16 ng/ml



#17 AR-1242-2

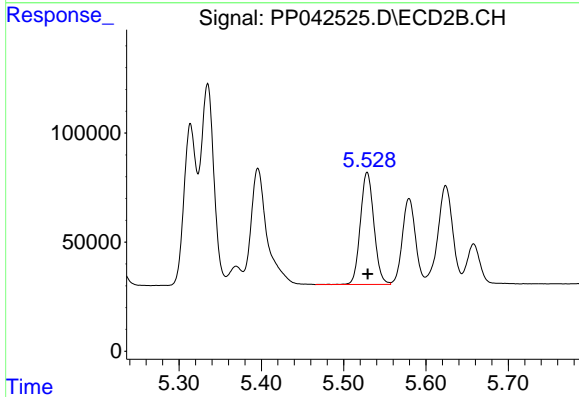
R.T.: 5.335 min
 Delta R.T.: 0.000 min
 Response: 1011302
 Conc: 892.99 ng/ml



#18 AR-1242-3

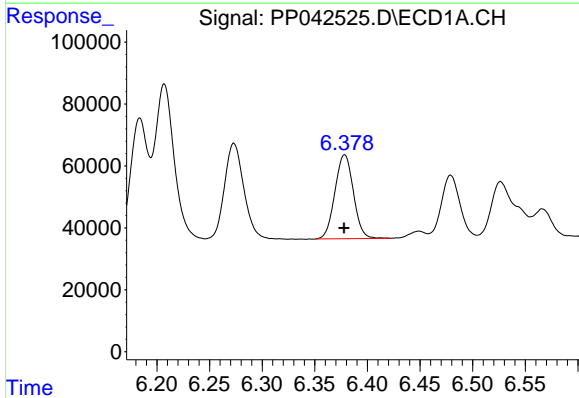
R.T.: 6.273 min
 Delta R.T.: 0.000 min
 Response: 396577
 Conc: 921.70 ng/ml

Instrument :
 ECD_P
 ClientSampleId :



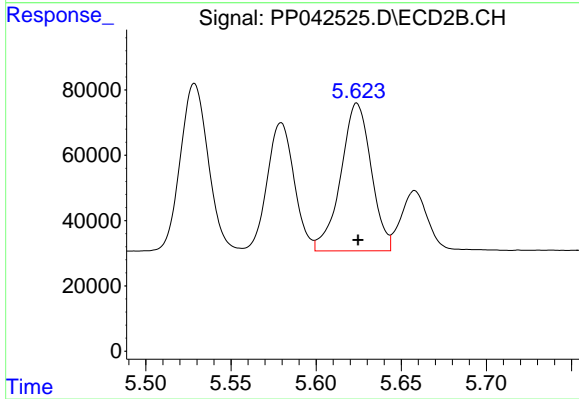
#18 AR-1242-3

R.T.: 5.529 min
 Delta R.T.: 0.000 min
 Response: 589208
 Conc: 906.42 ng/ml



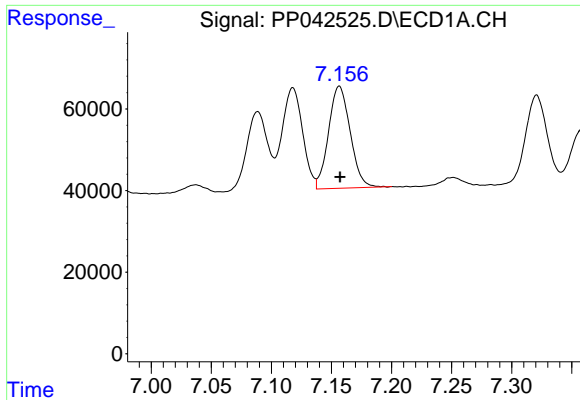
#19 AR-1242-4

R.T.: 6.378 min
 Delta R.T.: 0.000 min
 Response: 331445
 Conc: 941.77 ng/ml



#19 AR-1242-4

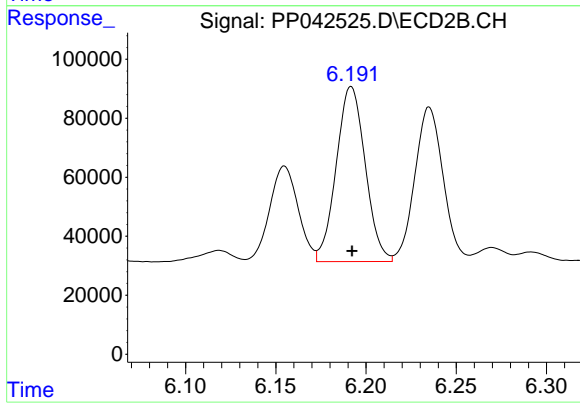
R.T.: 5.624 min
 Delta R.T.: 0.000 min
 Response: 562131
 Conc: 885.92 ng/ml



#20 AR-1242-5

R.T.: 7.157 min
Delta R.T.: 0.000 min
Response: 314573
Conc: 907.66 ng/ml

Instrument :
ECD_P
ClientSampleId :



#20 AR-1242-5

R.T.: 6.192 min
Delta R.T.: 0.000 min
Response: 664083
Conc: 886.35 ng/ml