

Data Path : Z:\pestpcbsrv\HPCHEM1\ECD_P\Data\PP010522\
 Data File : PP042537.D
 Signal(s) : Signal #1: ECD1A.CH Signal #2: ECD2B.CH
 Acq On : 05 Jan 2022 13:33
 Operator : AJ\MA
 Sample : M5337-09
 Misc :
 ALS Vial : 8 Sample Multiplier: 1

Instrument :
 ECD_P
 ClientSampleId :

Integration File signal 1: autoint1.e
 Integration File signal 2: autoint2.e
 Quant Time: Jan 05 13:48:06 2022
 Quant Method : Z:\pestpcbsrv\HPCHEM1\ECD_P\methods\PP010422.M
 Quant Title : GC EXTRACTABLES
 QLast Update : Wed Jan 05 12:01:35 2022
 Response via : Initial Calibration
 Integrator: ChemStation 6890 Scale Mode: Small noise peaks clipped

Volume Inj. : 2 µl
 Signal #1 Phase : ZB-MR2 Signal #2 Phase: ZB-MR2
 Signal #1 Info : 30Mx0.32mmx 0.50µ Signal #2 Info : 30M x 0.32mm x 0.25µm

Compound	RT#1	RT#2	Resp#1	Resp#2	ng/ml	ng/ml
System Monitoring Compounds						
1) SA Tetrachlo...	4.880	4.047	445551	608905	22.998	23.261
2) SA Decachlor...	10.818	9.390	263950	459021	22.499	23.356
Target Compounds						
7) L1 AR-1016-5	6.681	0.000	566	0	1.309	N.D. #
9) L2 AR-1221-2	5.228	4.403	2873	8229	18.156	30.644 #
12) L3 AR-1232-2	5.871f	0.000	1203	0	6.197	N.D. #
14) L3 AR-1232-4	0.000	5.643f	0	12428	N.D.	42.200 #
19) L4 AR-1242-4	0.000	5.643f	0	12428	N.D.	19.834 #
20) L4 AR-1242-5	7.161	6.218f	2748	128432	8.338	175.101 #
23) L5 AR-1248-3	6.681	5.643f	566	12428	0.994	13.757 #
24) L5 AR-1248-4	7.114	0.000	13370	0	23.909	N.D. #
25) L5 AR-1248-5	7.154	6.218f	4359	128432	7.956	129.446 #
26) L6 AR-1254-1	7.070f	6.218f	8366	128432	13.732	83.407 #
27) L6 AR-1254-2	7.325	0.000	30572	0	33.291	N.D. #
28) L6 AR-1254-3	7.696	6.775	128257	12464	140.009	5.968 #
29) L6 AR-1254-4	7.993	7.018	16961	4796	28.317	3.919 #
30) L6 AR-1254-5	8.442f	7.446	25032	48016	39.592	29.235 #
31) L7 AR-1260-1	7.866	6.911	10630	26053	17.490	20.023
32) L7 AR-1260-2	8.120	7.090f	45129	191557	64.159	126.001 #
33) L7 AR-1260-3	0.000	7.266	0	13243	N.D.	9.263 #
34) L7 AR-1260-4	8.713	7.750	7557	15057	11.454	13.678
35) L7 AR-1260-5	9.044	7.998	39822	34079	33.012	14.119 #
36) L8 AR-1262-1	0.000	7.446	0	48016	N.D.	55.314 #
37) L8 AR-1262-2	9.044	7.750	39822	15057	29.779	10.861 #
38) L8 AR-1262-3	9.379f	8.293	9440	104610	14.323	97.834 #
39) L8 AR-1262-4	0.000	8.350	0	54854	N.D.	28.460 #
40) L8 AR-1262-5	10.089	0.000	17254	0	35.363	N.D. #
41) L9 AR-1268-1	0.000	8.293	0	104610	N.D.	34.526 #
42) L9 AR-1268-2	0.000	8.350	0	54854	N.D.	19.374 #
43) L9 AR-1268-3	9.672	8.566	15644	26398	11.624	10.928
44) L9 AR-1268-4	10.089	0.000	17254	0	31.519	N.D. #
45) L9 AR-1268-5	10.490	9.139	37059	30553	8.304	4.292 #

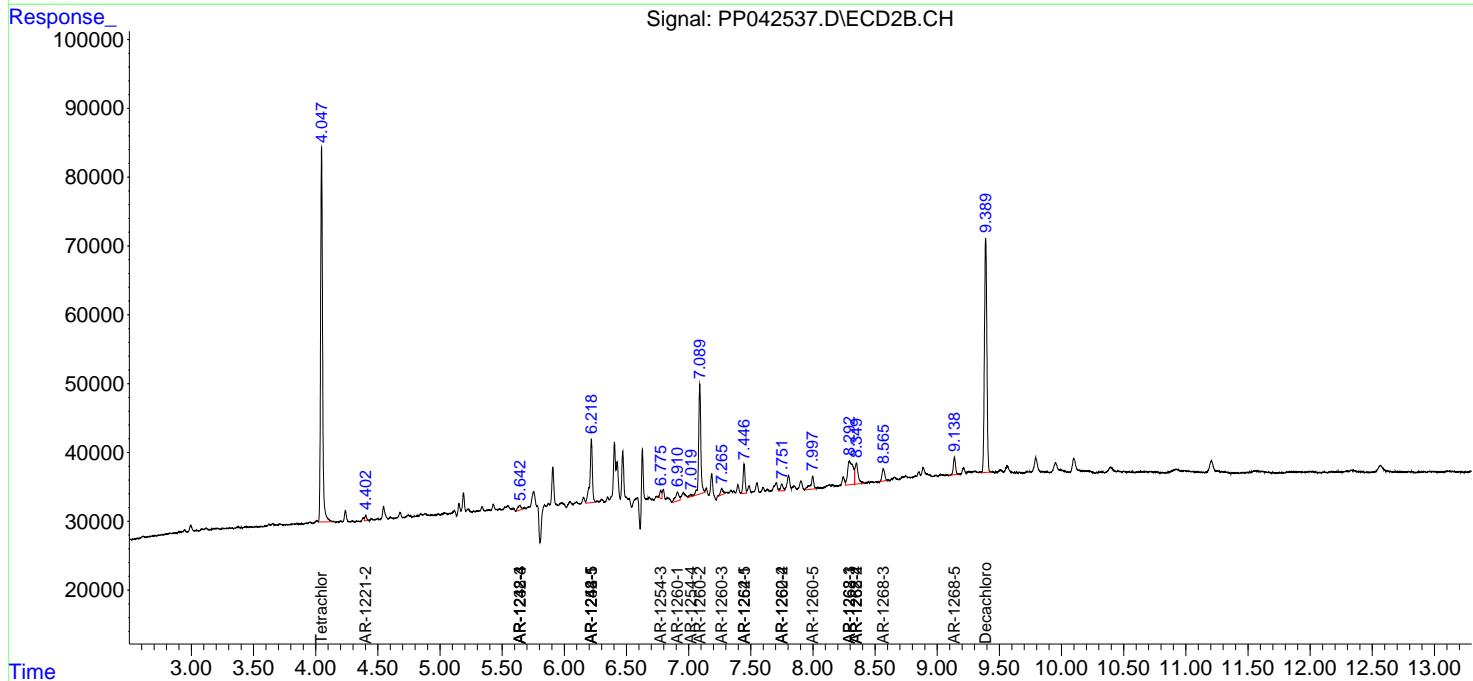
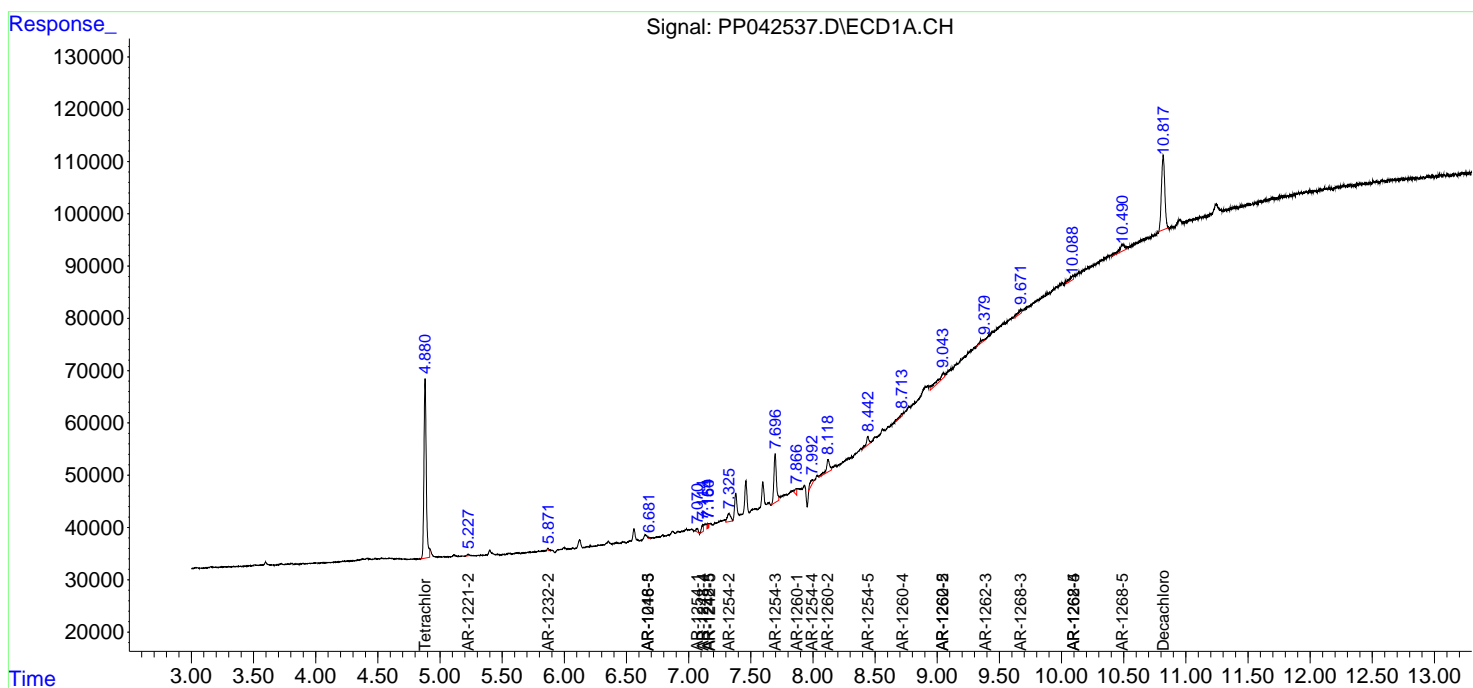
(f)=RT Delta > 1/2 Window (#)=Amounts differ by > 25% (m)=manual int.

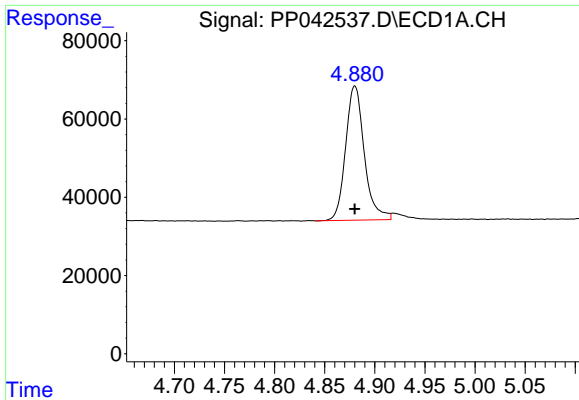
Data Path : Z:\pestpcbsrv\HPCHEM1\ECD_P\Data\PP010522\
 Data File : PP042537.D
 Signal(s) : Signal #1: ECD1A.CH Signal #2: ECD2B.CH
 Acq On : 05 Jan 2022 13:33
 Operator : AJ\MA
 Sample : M5337-09
 Misc :
 ALS Vial : 8 Sample Multiplier: 1

Instrument :
 ECD_P
 ClientSampleId :

Integration File signal 1: autoint1.e
 Integration File signal 2: autoint2.e
 Quant Time: Jan 05 13:48:06 2022
 Quant Method : Z:\pestpcbsrv\HPCHEM1\ECD_P\methods\PP010422.M
 Quant Title : GC EXTRACTABLES
 QLast Update : Wed Jan 05 12:01:35 2022
 Response via : Initial Calibration
 Integrator: ChemStation 6890 Scale Mode: Small noise peaks clipped

Volume Inj. : 2 µl
 Signal #1 Phase : ZB-MR1 Signal #2 Phase: ZB-MR2
 Signal #1 Info : 30Mx0.32mmx 0.50µ Signal #2 Info : 30M x 0.32mm x 0.25µm

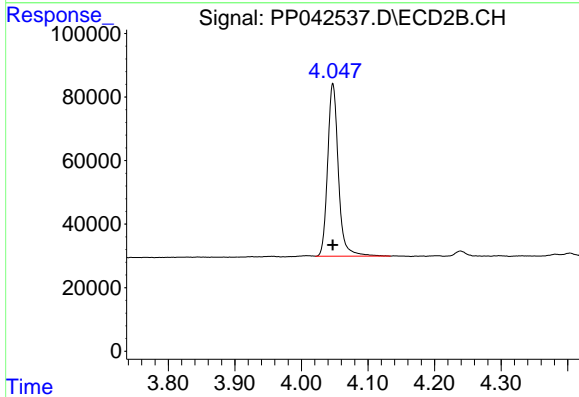




#1 Tetrachloro-m-xylene

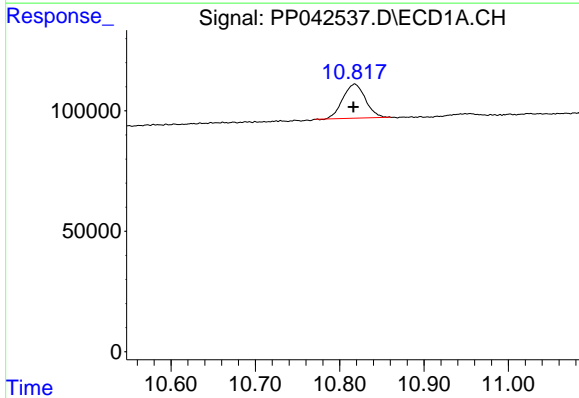
R.T.: 4.880 min
 Delta R.T.: 0.000 min
 Response: 445551
 Conc: 23.00 ng/ml

Instrument :
 ECD_P
 ClientSampleId :



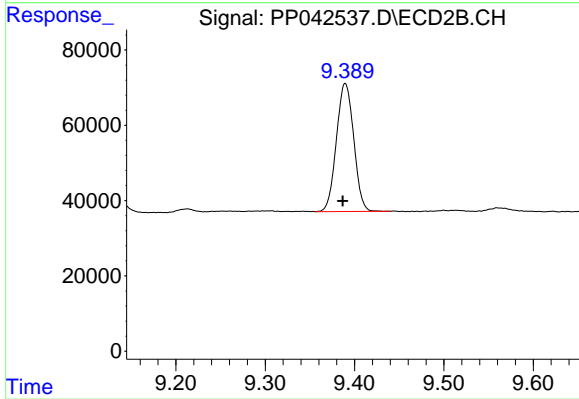
#1 Tetrachloro-m-xylene

R.T.: 4.047 min
 Delta R.T.: 0.000 min
 Response: 608905
 Conc: 23.26 ng/ml



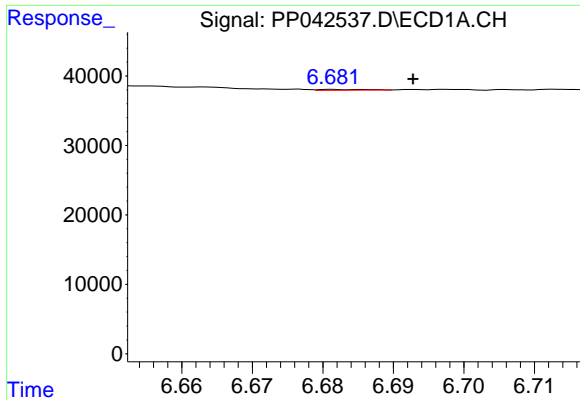
#2 Decachlorobiphenyl

R.T.: 10.818 min
 Delta R.T.: 0.002 min
 Response: 263950
 Conc: 22.50 ng/ml



#2 Decachlorobiphenyl

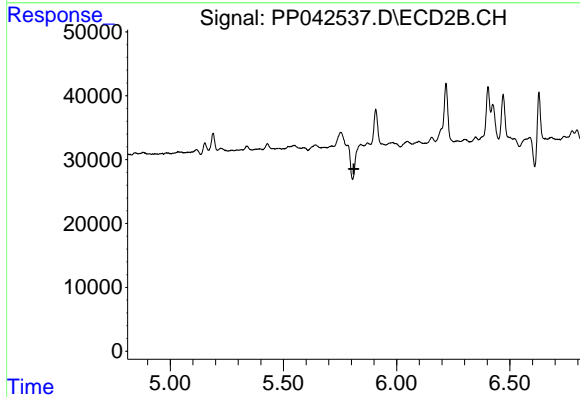
R.T.: 9.390 min
 Delta R.T.: 0.003 min
 Response: 459021
 Conc: 23.36 ng/ml



#7 AR-1016-5

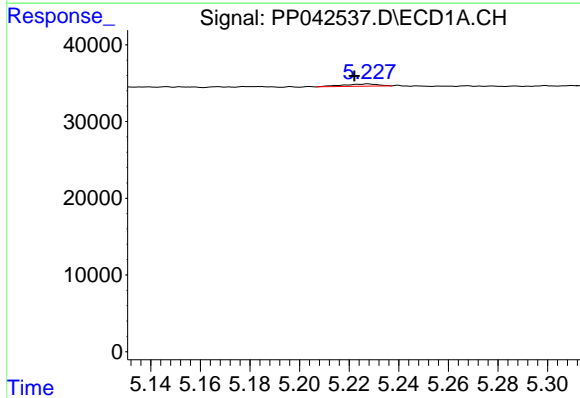
R.T.: 6.681 min
 Delta R.T.: -0.011 min
 Response: 566
 Conc: 1.31 ng/ml

Instrument :
 ECD_P
 ClientSampleId :



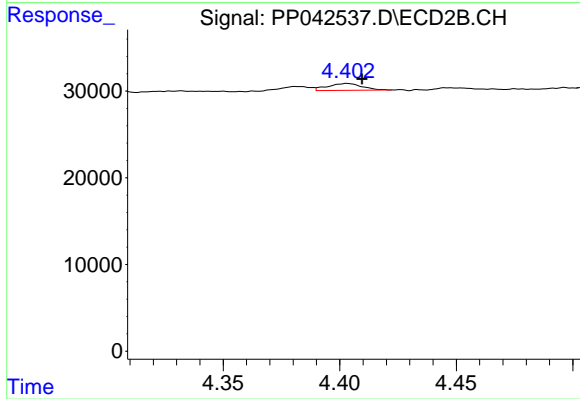
#7 AR-1016-5

R.T.: 0.000 min
 Exp R.T. : 5.811 min
 Response: 0
 Conc: N.D.



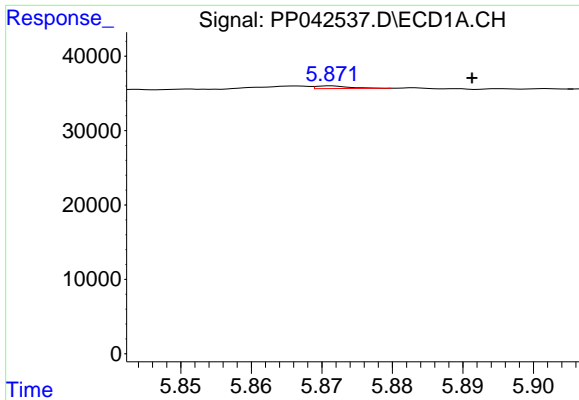
#9 AR-1221-2

R.T.: 5.228 min
 Delta R.T.: 0.005 min
 Response: 2873
 Conc: 18.16 ng/ml



#9 AR-1221-2

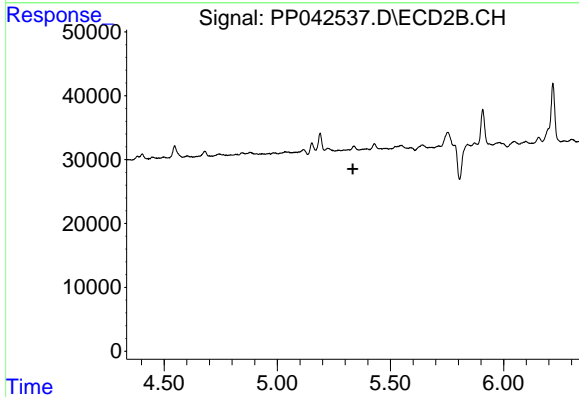
R.T.: 4.403 min
 Delta R.T.: -0.006 min
 Response: 8229
 Conc: 30.64 ng/ml



#12 AR-1232-2

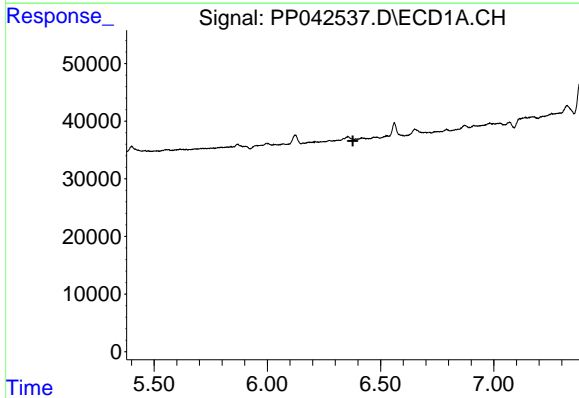
R.T.: 5.871 min
 Delta R.T.: -0.020 min
 Response: 1203
 Conc: 6.20 ng/ml

Instrument :
 ECD_P
 ClientSampleId :



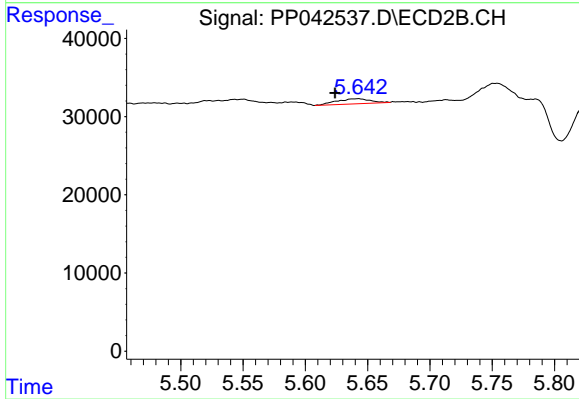
#12 AR-1232-2

R.T.: 0.000 min
 Exp R.T. : 5.334 min
 Response: 0
 Conc: N.D.



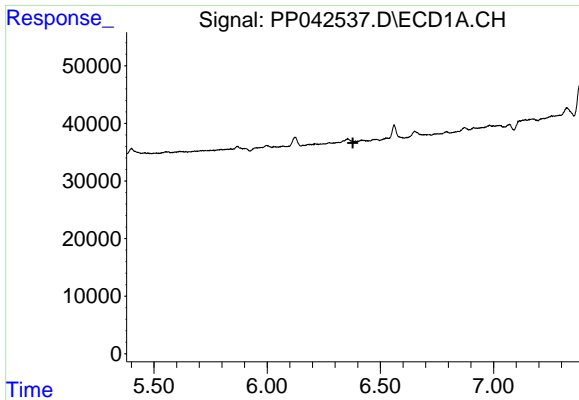
#14 AR-1232-4

R.T.: 0.000 min
 Exp R.T. : 6.378 min
 Response: 0
 Conc: N.D.



#14 AR-1232-4

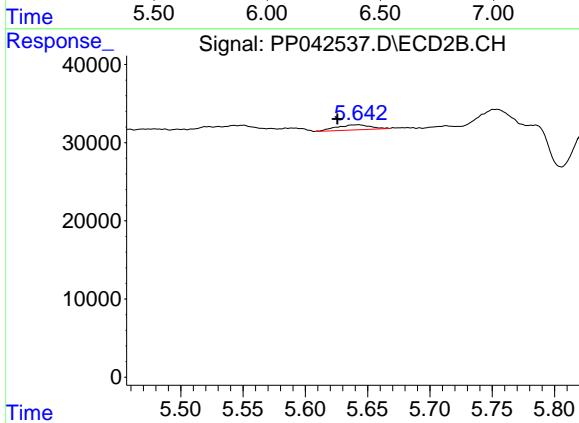
R.T.: 5.643 min
 Delta R.T.: 0.019 min
 Response: 12428
 Conc: 42.20 ng/ml



#19 AR-1242-4

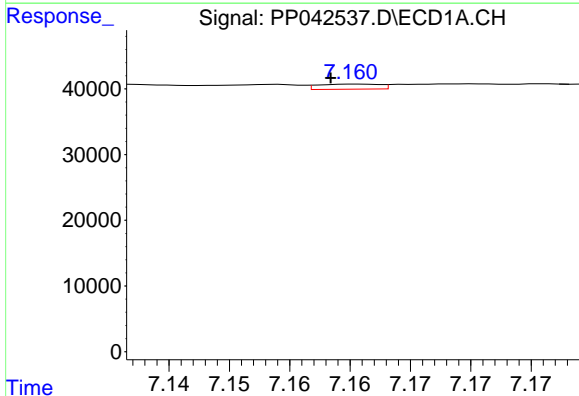
R.T.: 0.000 min
 Exp R.T.: 6.379 min
 Response: 0
 Conc: N.D.

Instrument :
 ECD_P
 ClientSampleId :



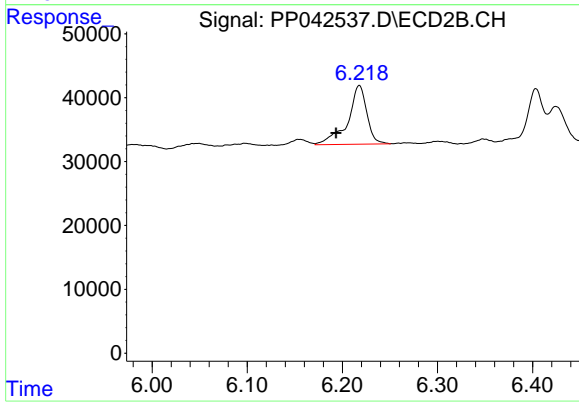
#19 AR-1242-4

R.T.: 5.643 min
 Delta R.T.: 0.017 min
 Response: 12428
 Conc: 19.83 ng/ml



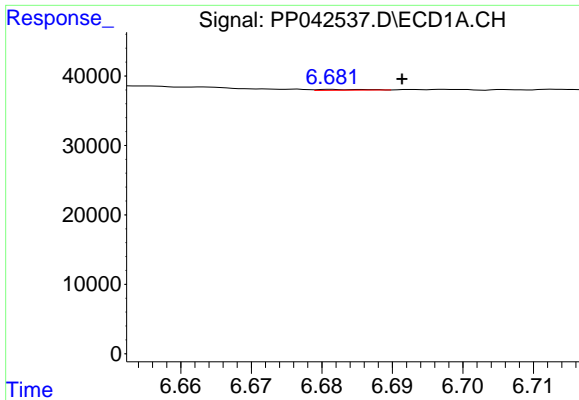
#20 AR-1242-5

R.T.: 7.161 min
 Delta R.T.: 0.002 min
 Response: 2748
 Conc: 8.34 ng/ml



#20 AR-1242-5

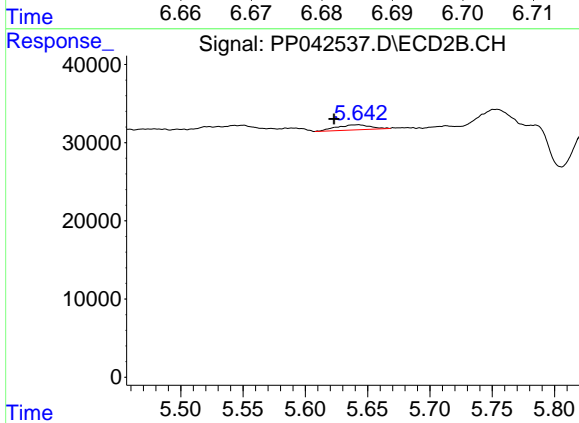
R.T.: 6.218 min
 Delta R.T.: 0.025 min
 Response: 128432
 Conc: 175.10 ng/ml



#23 AR-1248-3

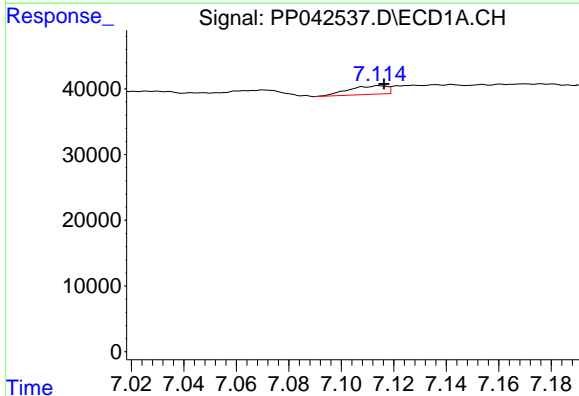
R.T.: 6.681 min
 Delta R.T.: -0.010 min
 Response: 566
 Conc: 0.99 ng/ml

Instrument :
 ECD_P
 ClientSampleId :



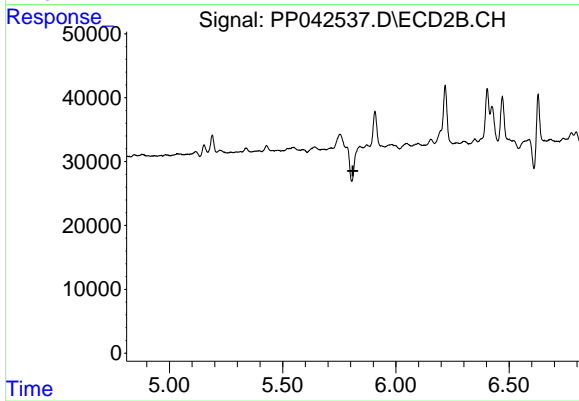
#23 AR-1248-3

R.T.: 5.643 min
 Delta R.T.: 0.020 min
 Response: 12428
 Conc: 13.76 ng/ml



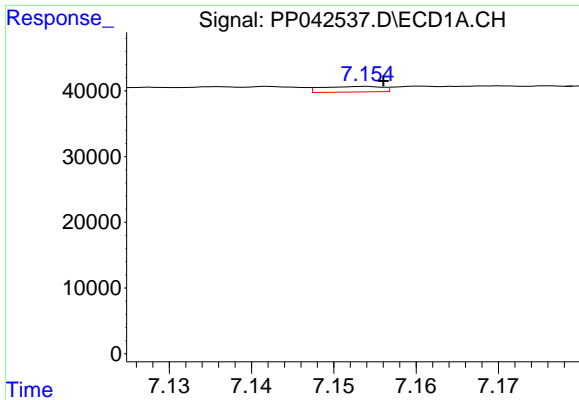
#24 AR-1248-4

R.T.: 7.114 min
 Delta R.T.: -0.002 min
 Response: 13370
 Conc: 23.91 ng/ml



#24 AR-1248-4

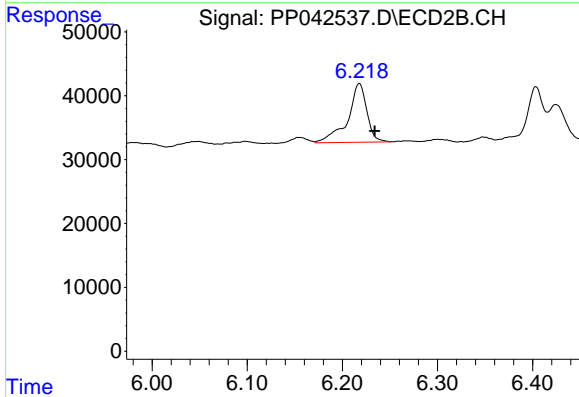
R.T.: 0.000 min
 Exp R.T. : 5.810 min
 Response: 0
 Conc: N.D.



#25 AR-1248-5

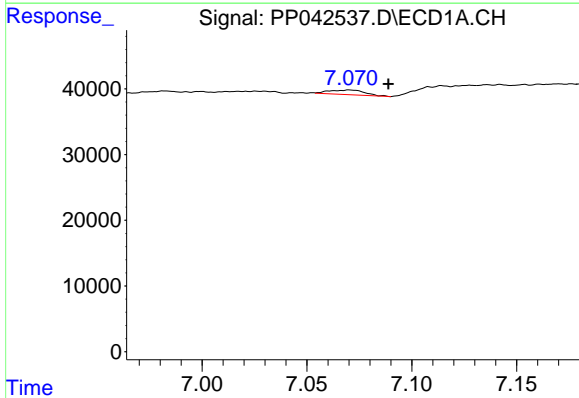
R.T.: 7.154 min
 Delta R.T.: -0.002 min
 Response: 4359
 Conc: 7.96 ng/ml

Instrument :
 ECD_P
 ClientSampleId :



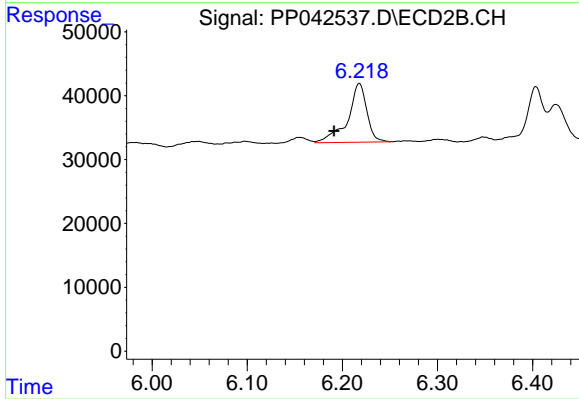
#25 AR-1248-5

R.T.: 6.218 min
 Delta R.T.: -0.016 min
 Response: 128432
 Conc: 129.45 ng/ml



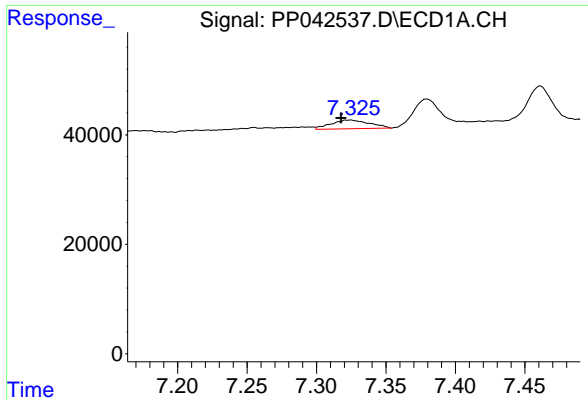
#26 AR-1254-1

R.T.: 7.070 min
 Delta R.T.: -0.019 min
 Response: 8366
 Conc: 13.73 ng/ml



#26 AR-1254-1

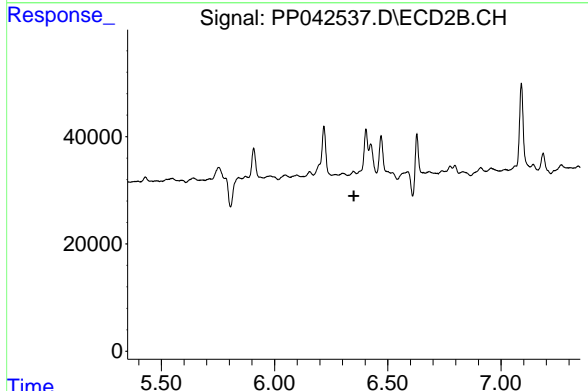
R.T.: 6.218 min
 Delta R.T.: 0.026 min
 Response: 128432
 Conc: 83.41 ng/ml



#27 AR-1254-2

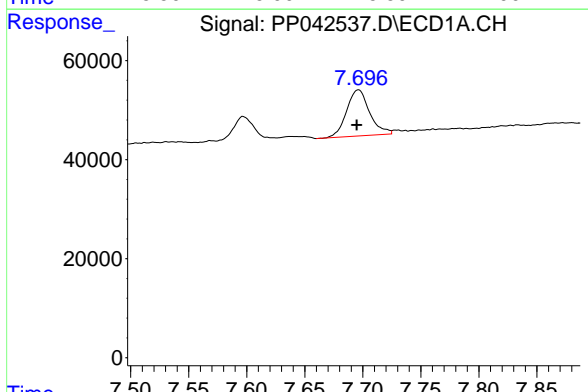
R.T.: 7.325 min
 Delta R.T.: 0.007 min
 Response: 30572
 Conc: 33.29 ng/ml

Instrument :
 ECD_P
 ClientSampleId :



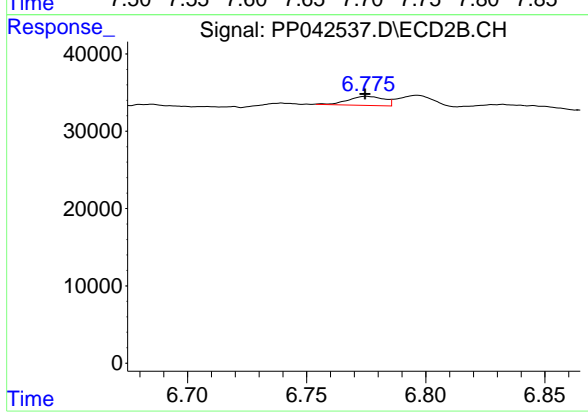
#27 AR-1254-2

R.T.: 0.000 min
 Exp R.T. : 6.350 min
 Response: 0
 Conc: N.D.



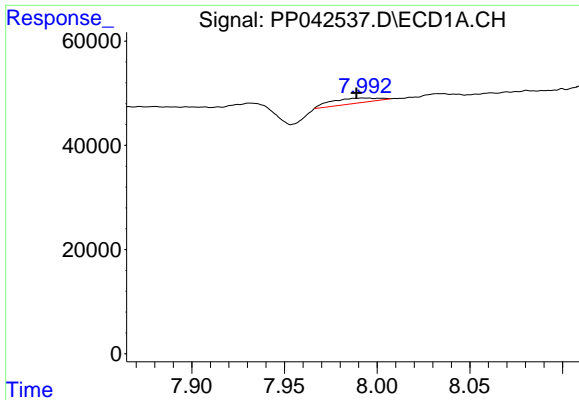
#28 AR-1254-3

R.T.: 7.696 min
 Delta R.T.: 0.002 min
 Response: 128257
 Conc: 140.01 ng/ml



#28 AR-1254-3

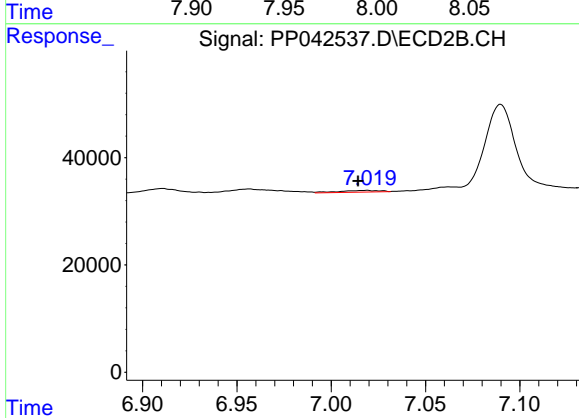
R.T.: 6.775 min
 Delta R.T.: 0.000 min
 Response: 12464
 Conc: 5.97 ng/ml



#29 AR-1254-4

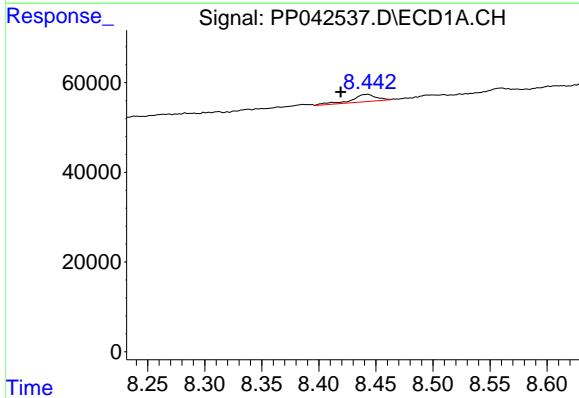
R.T.: 7.993 min
 Delta R.T.: 0.004 min
 Response: 16961
 Conc: 28.32 ng/ml

Instrument :
 ECD_P
 ClientSampleId :



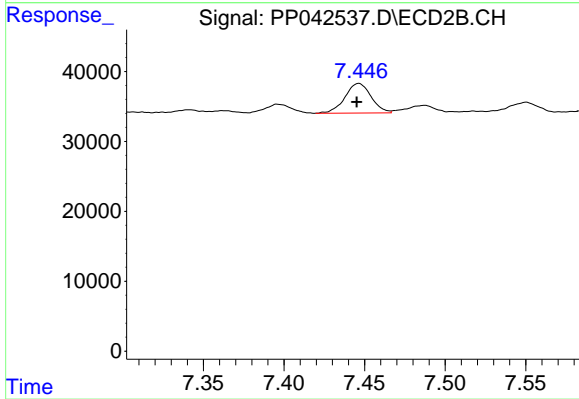
#29 AR-1254-4

R.T.: 7.018 min
 Delta R.T.: 0.004 min
 Response: 4796
 Conc: 3.92 ng/ml



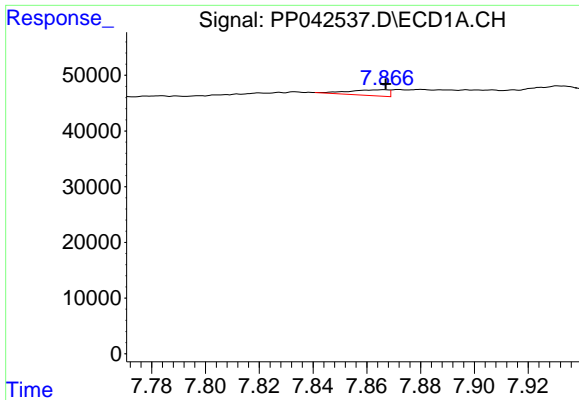
#30 AR-1254-5

R.T.: 8.442 min
 Delta R.T.: 0.023 min
 Response: 25032
 Conc: 39.59 ng/ml



#30 AR-1254-5

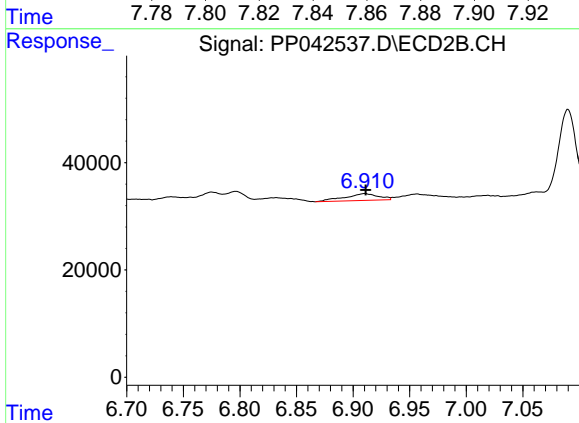
R.T.: 7.446 min
 Delta R.T.: 0.001 min
 Response: 48016
 Conc: 29.24 ng/ml



#31 AR-1260-1

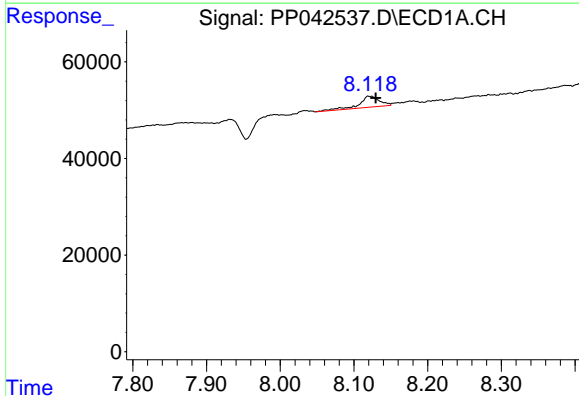
R.T.: 7.866 min
 Delta R.T.: 0.000 min
 Response: 10630
 Conc: 17.49 ng/ml

Instrument :
 ECD_P
 ClientSampleId :



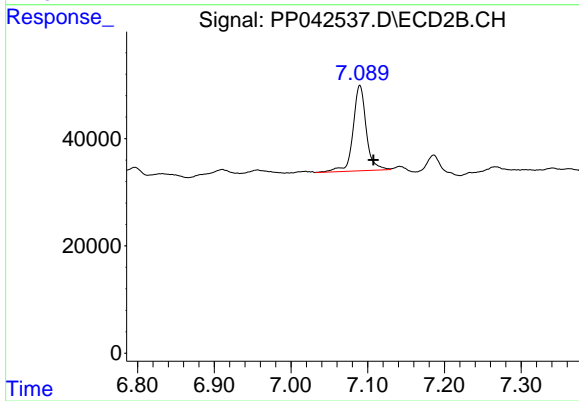
#31 AR-1260-1

R.T.: 6.911 min
 Delta R.T.: 0.000 min
 Response: 26053
 Conc: 20.02 ng/ml



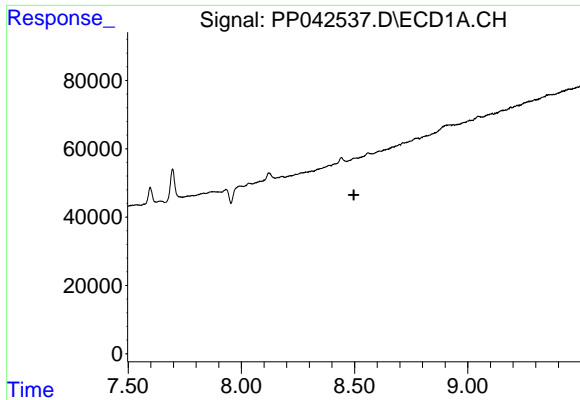
#32 AR-1260-2

R.T.: 8.120 min
 Delta R.T.: -0.010 min
 Response: 45129
 Conc: 64.16 ng/ml



#32 AR-1260-2

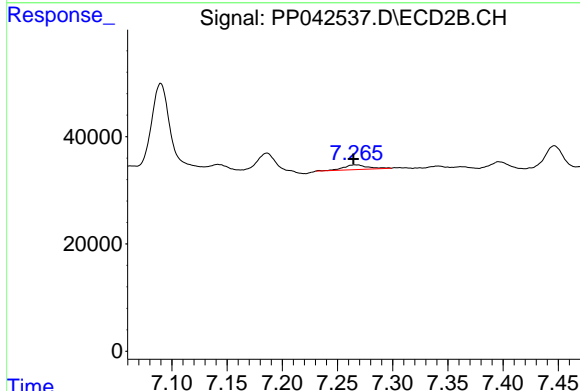
R.T.: 7.090 min
 Delta R.T.: -0.018 min
 Response: 191557
 Conc: 126.00 ng/ml



#33 AR-1260-3

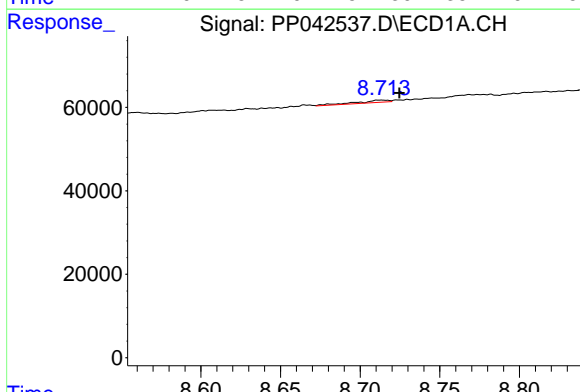
R.T.: 0.000 min
 Exp R.T.: 8.497 min
 Response: 0
 Conc: N.D.

Instrument :
 ECD_P
 ClientSampleId :



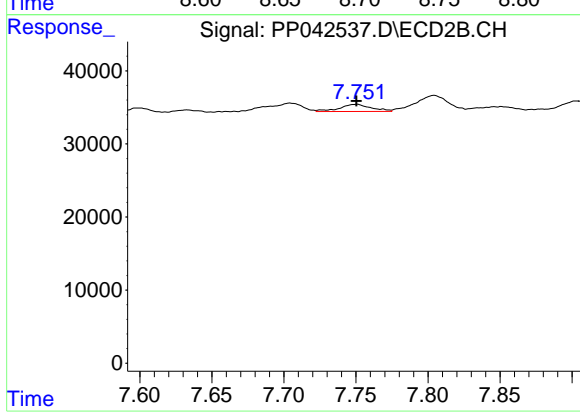
#33 AR-1260-3

R.T.: 7.266 min
 Delta R.T.: 0.002 min
 Response: 13243
 Conc: 9.26 ng/ml



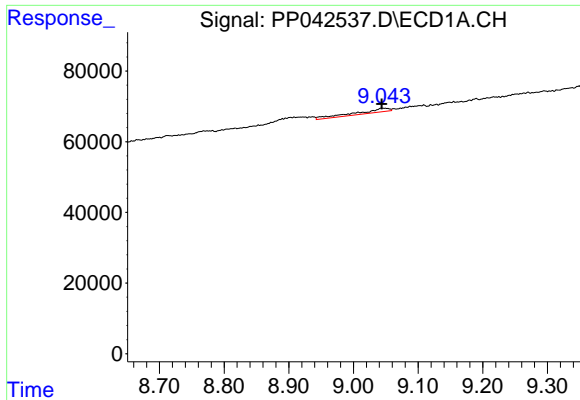
#34 AR-1260-4

R.T.: 8.713 min
 Delta R.T.: -0.012 min
 Response: 7557
 Conc: 11.45 ng/ml



#34 AR-1260-4

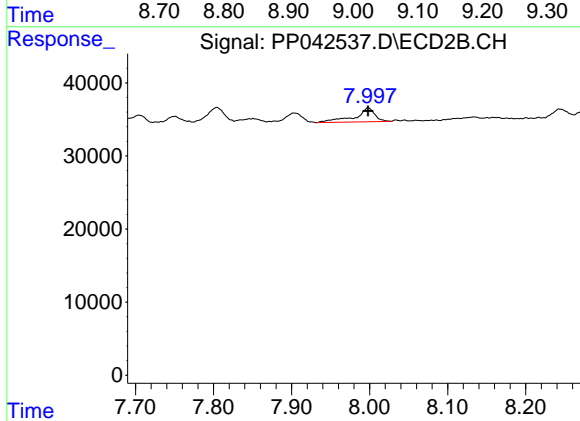
R.T.: 7.750 min
 Delta R.T.: 0.000 min
 Response: 15057
 Conc: 13.68 ng/ml



#35 AR-1260-5

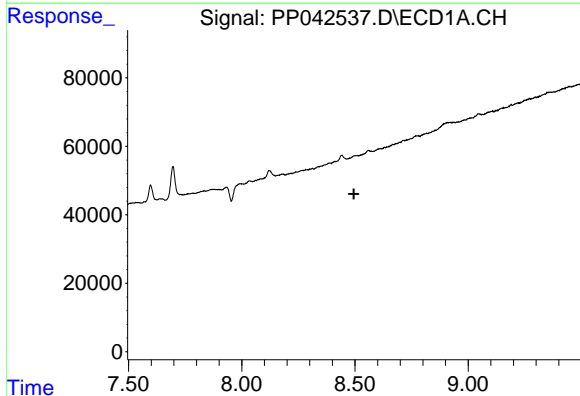
R.T.: 9.044 min
 Delta R.T.: 0.000 min
 Response: 39822
 Conc: 33.01 ng/ml

Instrument :
 ECD_P
 ClientSampleId :



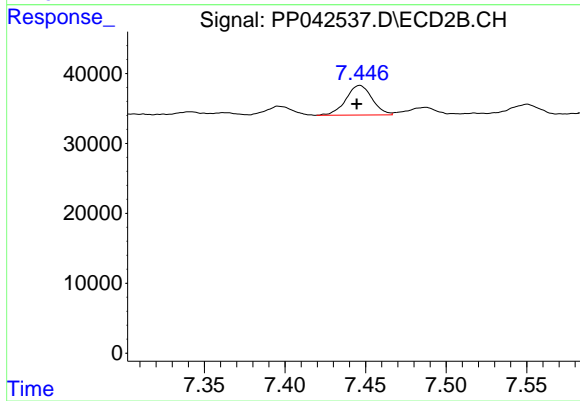
#35 AR-1260-5

R.T.: 7.998 min
 Delta R.T.: 0.000 min
 Response: 34079
 Conc: 14.12 ng/ml



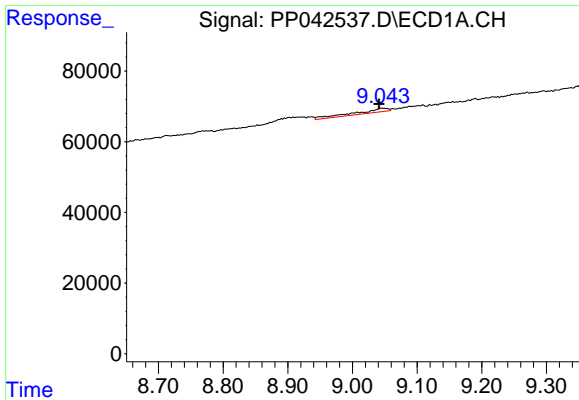
#36 AR-1262-1

R.T.: 0.000 min
 Exp R.T. : 8.495 min
 Response: 0
 Conc: N.D.



#36 AR-1262-1

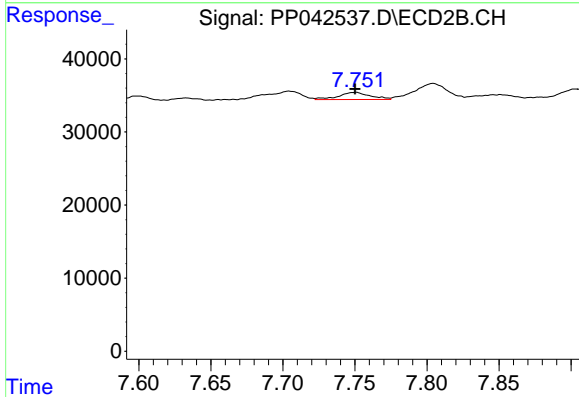
R.T.: 7.446 min
 Delta R.T.: 0.002 min
 Response: 48016
 Conc: 55.31 ng/ml



#37 AR-1262-2

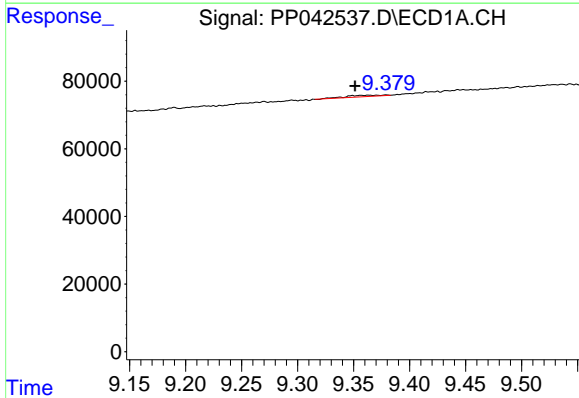
R.T.: 9.044 min
 Delta R.T.: 0.003 min
 Response: 39822
 Conc: 29.78 ng/ml

Instrument :
 ECD_P
 ClientSampleId :



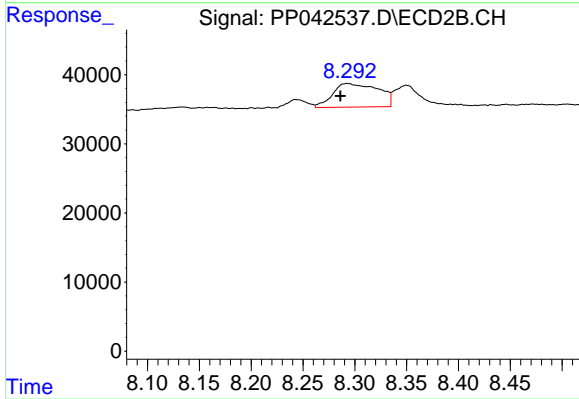
#37 AR-1262-2

R.T.: 7.750 min
 Delta R.T.: 0.000 min
 Response: 15057
 Conc: 10.86 ng/ml



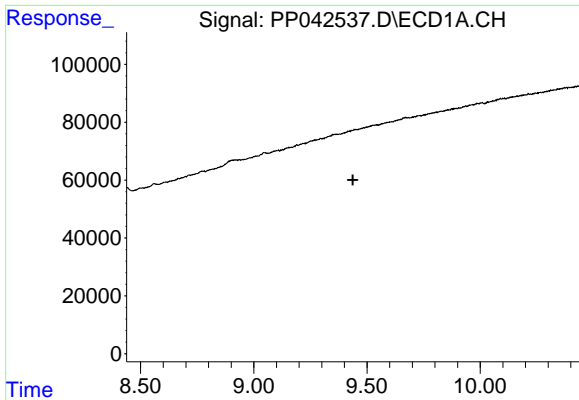
#38 AR-1262-3

R.T.: 9.379 min
 Delta R.T.: 0.028 min
 Response: 9440
 Conc: 14.32 ng/ml



#38 AR-1262-3

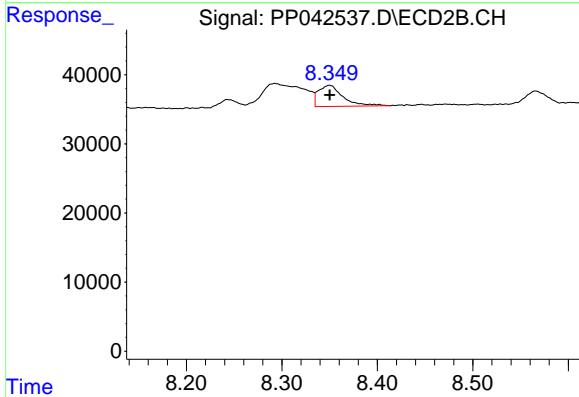
R.T.: 8.293 min
 Delta R.T.: 0.007 min
 Response: 104610
 Conc: 97.83 ng/ml



#39 AR-1262-4

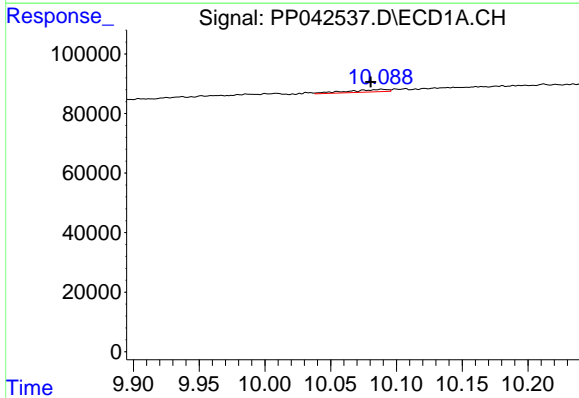
R.T.: 0.000 min
 Exp R.T. : 9.438 min
 Response: 0
 Conc: N.D.

Instrument :
 ECD_P
 ClientSampleId :



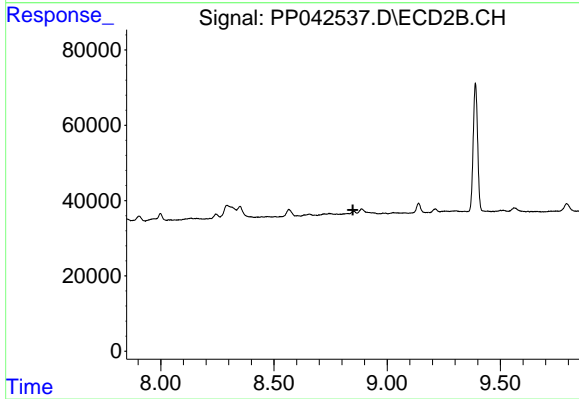
#39 AR-1262-4

R.T.: 8.350 min
 Delta R.T.: 0.000 min
 Response: 54854
 Conc: 28.46 ng/ml



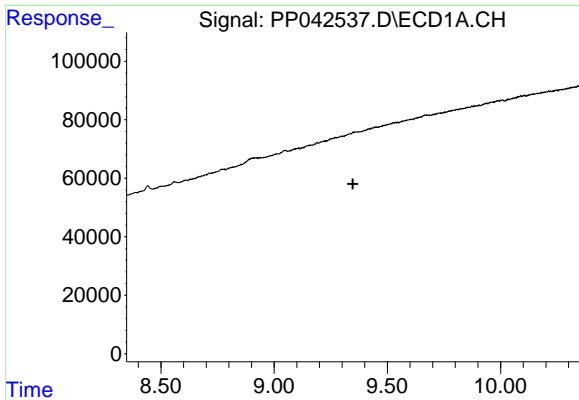
#40 AR-1262-5

R.T.: 10.089 min
 Delta R.T.: 0.008 min
 Response: 17254
 Conc: 35.36 ng/ml



#40 AR-1262-5

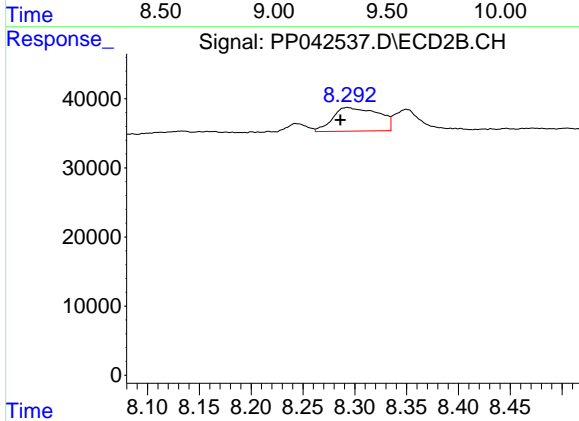
R.T.: 0.000 min
 Exp R.T. : 8.849 min
 Response: 0
 Conc: N.D.



#41 AR-1268-1

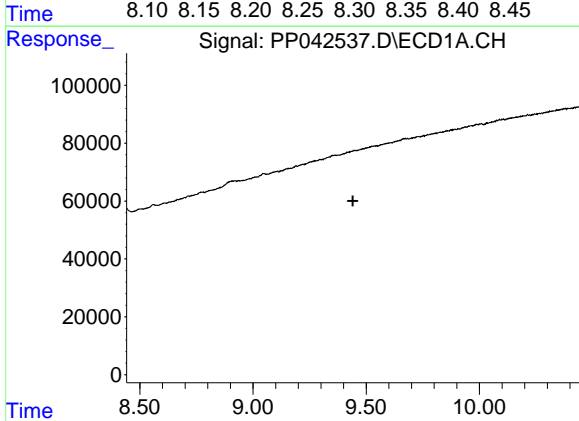
R.T.: 0.000 min
 Exp R.T.: 9.348 min
 Response: 0
 Conc: N.D.

Instrument :
 ECD_P
 ClientSampleId :



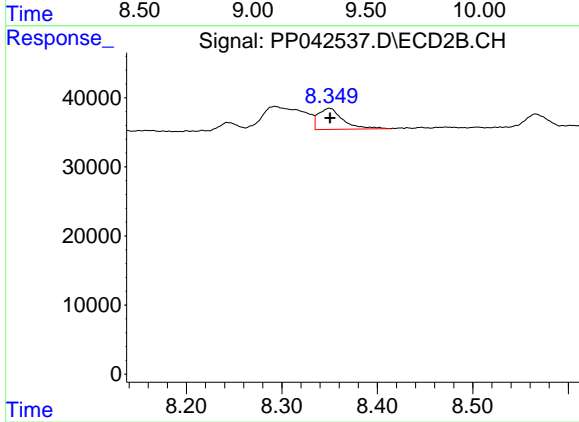
#41 AR-1268-1

R.T.: 8.293 min
 Delta R.T.: 0.007 min
 Response: 104610
 Conc: 34.53 ng/ml



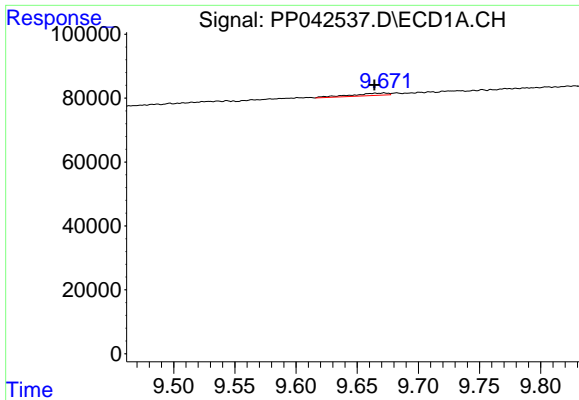
#42 AR-1268-2

R.T.: 0.000 min
 Exp R.T.: 9.441 min
 Response: 0
 Conc: N.D.



#42 AR-1268-2

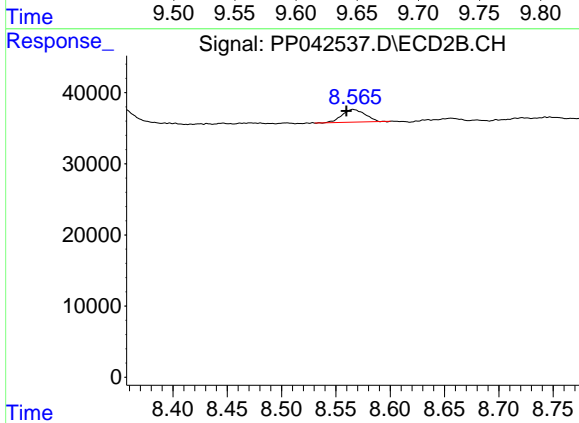
R.T.: 8.350 min
 Delta R.T.: 0.000 min
 Response: 54854
 Conc: 19.37 ng/ml



#43 AR-1268-3

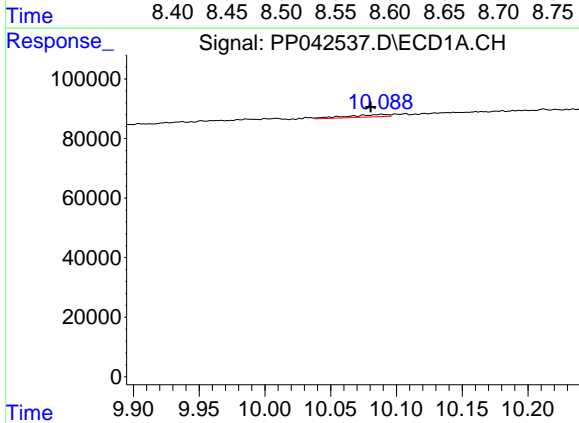
R.T.: 9.672 min
 Delta R.T.: 0.008 min
 Response: 15644
 Conc: 11.62 ng/ml

Instrument :
 ECD_P
 ClientSampleId :



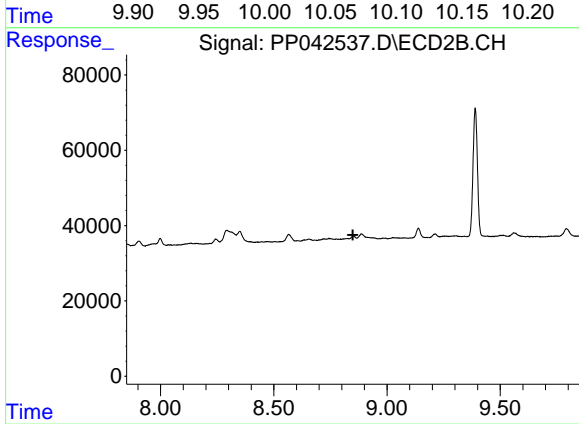
#43 AR-1268-3

R.T.: 8.566 min
 Delta R.T.: 0.006 min
 Response: 26398
 Conc: 10.93 ng/ml



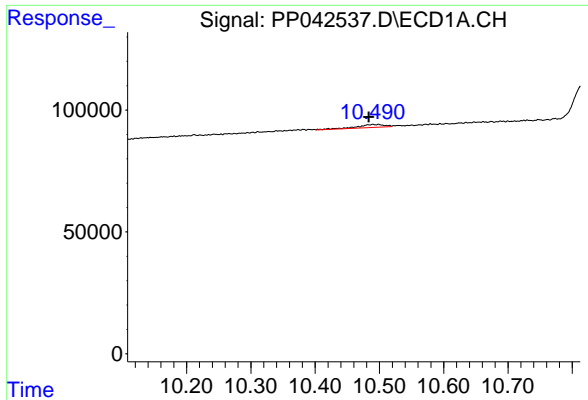
#44 AR-1268-4

R.T.: 10.089 min
 Delta R.T.: 0.009 min
 Response: 17254
 Conc: 31.52 ng/ml



#44 AR-1268-4

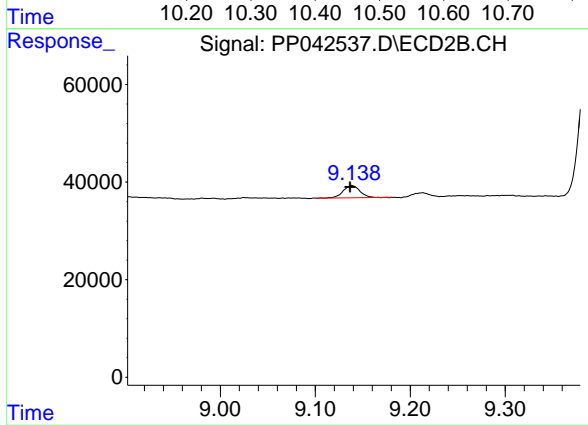
R.T.: 0.000 min
 Exp R.T. : 8.849 min
 Response: 0
 Conc: N.D.



#45 AR-1268-5

R.T.: 10.490 min
 Delta R.T.: 0.007 min
 Response: 37059
 Conc: 8.30 ng/ml

Instrument :
 ECD_P
 ClientSampleId :



#45 AR-1268-5

R.T.: 9.139 min
 Delta R.T.: 0.002 min
 Response: 30553
 Conc: 4.29 ng/ml