

Data Path : Z:\pestpcbsrv\HPCHEM1\ECD_P\Data\PP010522\
 Data File : PP042544.D
 Signal(s) : Signal #1: ECD1A.CH Signal #2: ECD2B.CH
 Acq On : 05 Jan 2022 15:29
 Operator : AJ\MA
 Sample : M5334-07 10X
 Misc :
 ALS Vial : 15 Sample Multiplier: 1

Instrument :
 ECD_P
 ClientSampleId :

Integration File signal 1: autoint1.e
 Integration File signal 2: autoint2.e
 Quant Time: Jan 05 16:13:48 2022
 Quant Method : Z:\pestpcbsrv\HPCHEM1\ECD_P\methods\PP010422.M
 Quant Title : GC EXTRACTABLES
 QLast Update : Wed Jan 05 12:01:35 2022
 Response via : Initial Calibration
 Integrator: ChemStation 6890 Scale Mode: Small noise peaks clipped

Volume Inj. : 2 µl
 Signal #1 Phase : ZB-MR1 Signal #2 Phase: ZB-MR2
 Signal #1 Info : 30Mx0.32mmx 0.50µ Signal #2 Info : 30M x 0.32mm x 0.25µm

	Compound	RT#1	RT#2	Resp#1	Resp#2	ng/ml	ng/ml

System Monitoring Compounds							
1)	SA Tetrachlo...	4.881	4.048	29930	48475	1.545	1.852
2)	SA Decachlor...	10.818	9.390	15569	40249	1.327	2.048 #
Target Compounds							
6)	L1 AR-1016-4	0.000	5.580	0	24737	N.D.	38.314 #
7)	L1 AR-1016-5	6.695	5.812	10645	12745	24.643	15.520 #
15)	L3 AR-1232-5	6.480	5.812	13945	12745	112.295	39.821 #
20)	L4 AR-1242-5	7.163	6.193	8910	67590	27.036	92.150 #
22)	L5 AR-1248-2	6.480	5.580	13945	24737	30.246	29.054
23)	L5 AR-1248-3	6.695	0.000	10645	0	18.708	N.D. #
24)	L5 AR-1248-4	7.118	5.812	12072	12745	21.586	12.176 #
25)	L5 AR-1248-5	7.163	0.000	8910	0	16.262	N.D. #
26)	L6 AR-1254-1	7.091	6.193	28267	67590	46.400	43.894
27)	L6 AR-1254-2	7.320	6.352	43890	67533	47.793	50.245
28)	L6 AR-1254-3	7.698	6.776	48923	94237	53.405	45.119
29)	L6 AR-1254-4	7.993	7.015	27860	50121	46.513	40.954
30)	L6 AR-1254-5	8.421	7.447	28541	66014	45.143	40.193
31)	L7 AR-1260-1	7.870	6.914	15897	46100	26.155	35.430 #
32)	L7 AR-1260-2	8.135	7.109	14136	53098	20.096	34.927 #
33)	L7 AR-1260-3	8.509	7.266	2886	38458	5.209	26.899 #
34)	L7 AR-1260-4	8.721	0.000	3227	0	4.892	N.D. #
35)	L7 AR-1260-5	9.043	0.000	9344	0	7.746	N.D. #
36)	L8 AR-1262-1	8.509	7.447	2886	66014	3.687	76.046 #
37)	L8 AR-1262-2	9.043	0.000	9344	0	6.987	N.D. #
38)	L8 AR-1262-3	9.351	0.000	767	0	1.164	N.D. #
39)	L8 AR-1262-4	9.441	0.000	1648	0	3.410	N.D. #
40)	L8 AR-1262-5	10.081	0.000	3793	0	7.773	N.D. #
41)	L9 AR-1268-1	9.351	0.000	767	0	0.469	N.D. #
42)	L9 AR-1268-2	9.441	0.000	1648	0	1.090	N.D. #
43)	L9 AR-1268-3	9.663	0.000	6355	0	4.722	N.D. #
44)	L9 AR-1268-4	10.081	0.000	3793	0	6.928	N.D. #
45)	L9 AR-1268-5	10.481	0.000	4075	0	0.913	N.D. #

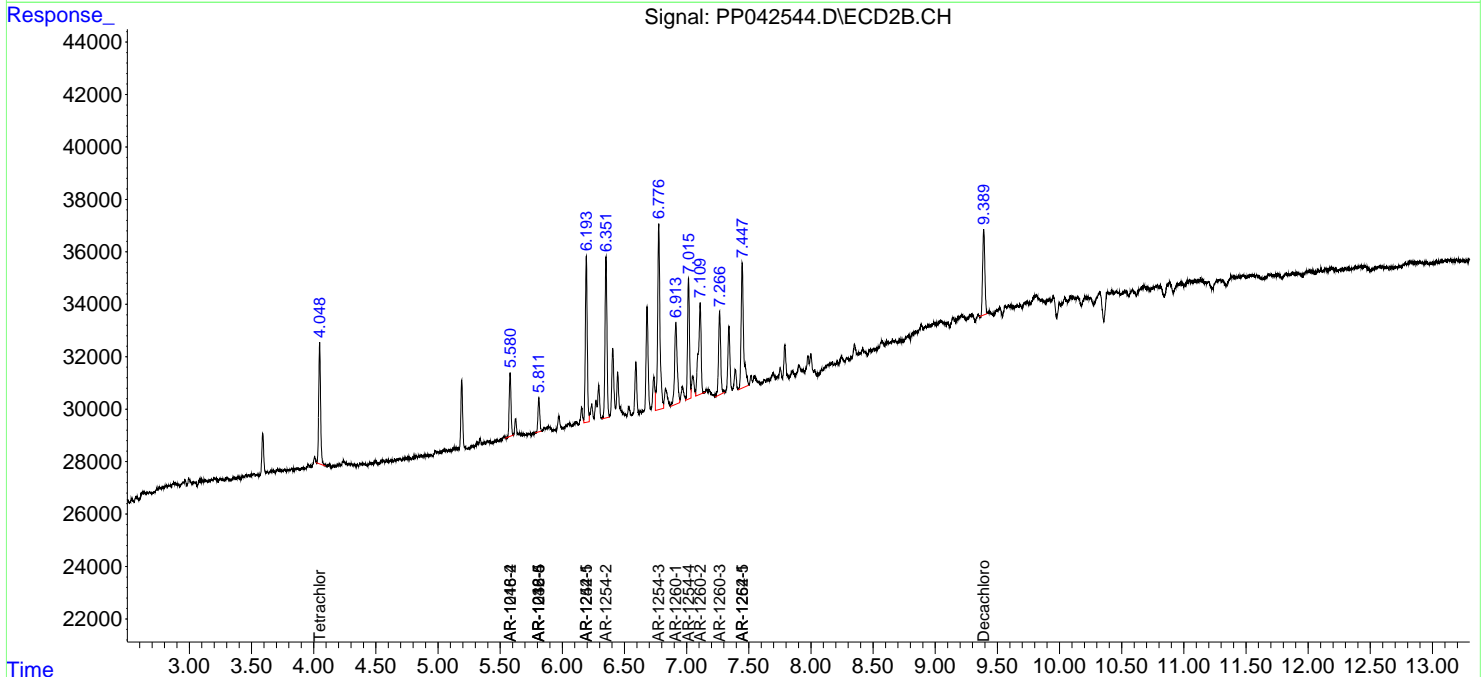
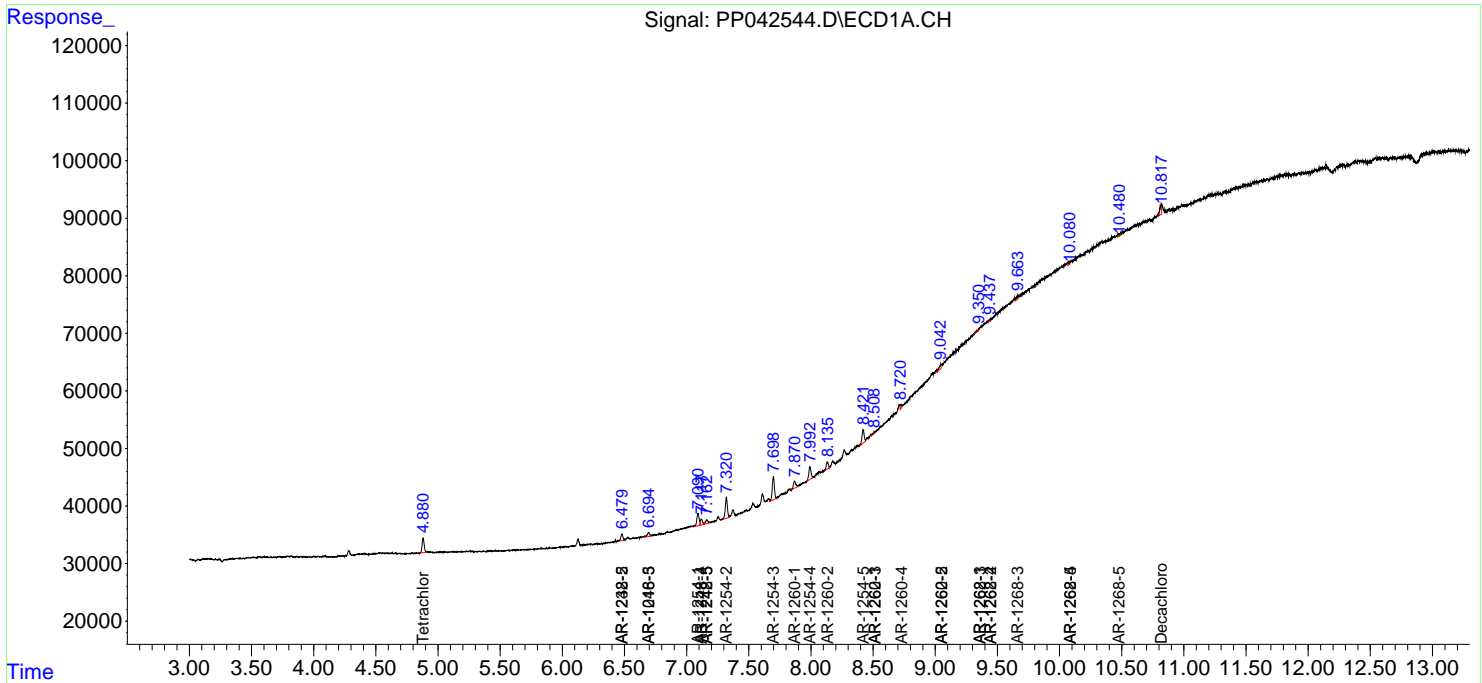
(f)=RT Delta > 1/2 Window (#)=Amounts differ by > 25% (m)=manual int.

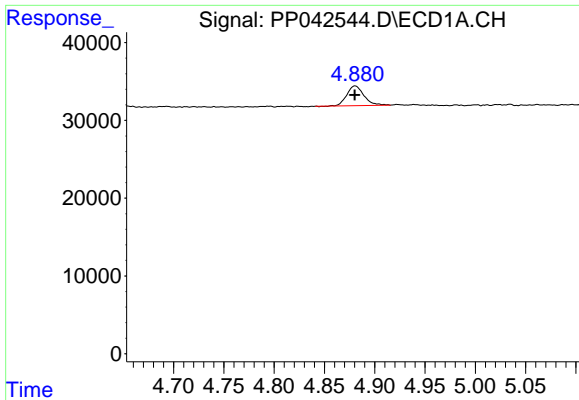
Data Path : Z:\pestpcbsrv\HPCHEM1\ECD_P\Data\PP010522\
 Data File : PP042544.D
 Signal(s) : Signal #1: ECD1A.CH Signal #2: ECD2B.CH
 Acq On : 05 Jan 2022 15:29
 Operator : AJ\MA
 Sample : M5334-07 10X
 Misc :
 ALS Vial : 15 Sample Multiplier: 1

Instrument :
 ECD_P
 ClientSampleId :

Integration File signal 1: autoint1.e
 Integration File signal 2: autoint2.e
 Quant Time: Jan 05 16:13:48 2022
 Quant Method : Z:\pestpcbsrv\HPCHEM1\ECD_P\methods\PP010422.M
 Quant Title : GC EXTRACTABLES
 QLast Update : Wed Jan 05 12:01:35 2022
 Response via : Initial Calibration
 Integrator: ChemStation 6890 Scale Mode: Small noise peaks clipped

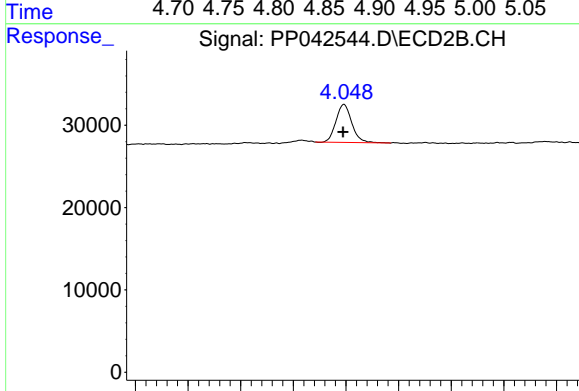
Volume Inj. : 2 µl
 Signal #1 Phase : ZB-MR1 Signal #2 Phase: ZB-MR2
 Signal #1 Info : 30Mx0.32mmx 0.50µ Signal #2 Info : 30M x 0.32mm x 0.25µm



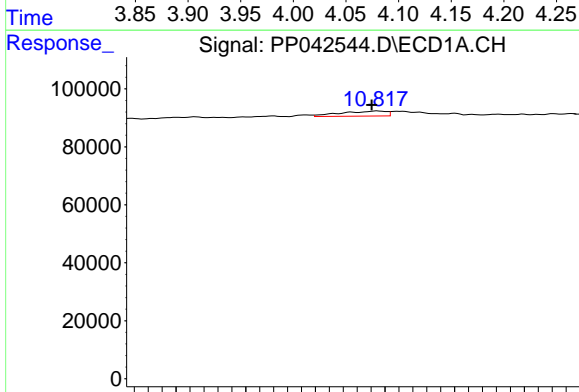


#1 Tetrachloro-m-xylene
 R.T.: 4.881 min
 Delta R.T.: 0.000 min
 Response: 29930
 Conc: 1.54 ng/ml

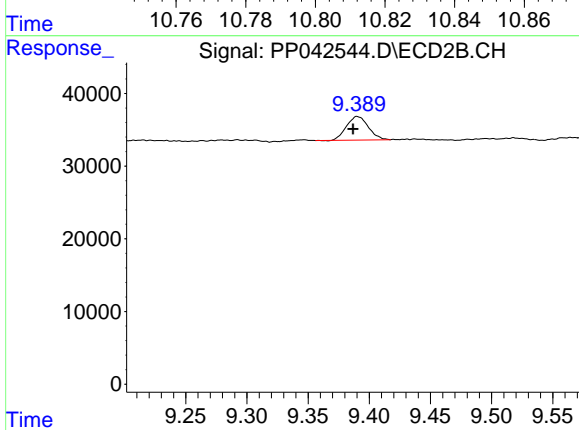
Instrument :
 ECD_P
 ClientSampleId :



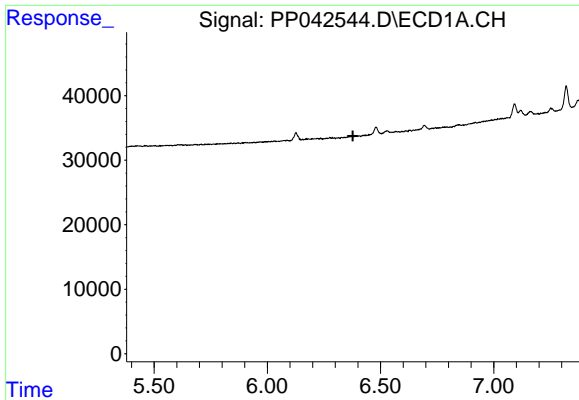
#1 Tetrachloro-m-xylene
 R.T.: 4.048 min
 Delta R.T.: 0.000 min
 Response: 48475
 Conc: 1.85 ng/ml



#2 Decachlorobiphenyl
 R.T.: 10.818 min
 Delta R.T.: 0.002 min
 Response: 15569
 Conc: 1.33 ng/ml



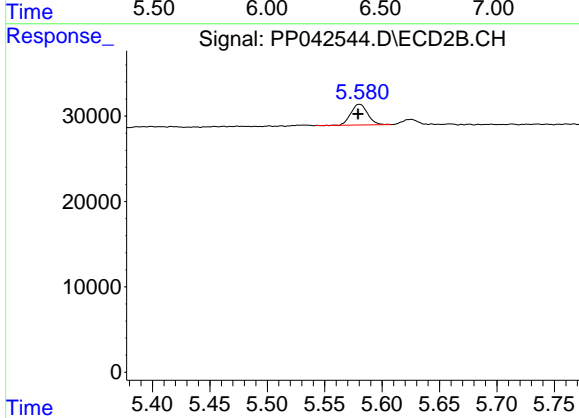
#2 Decachlorobiphenyl
 R.T.: 9.390 min
 Delta R.T.: 0.003 min
 Response: 40249
 Conc: 2.05 ng/ml



#6 AR-1016-4

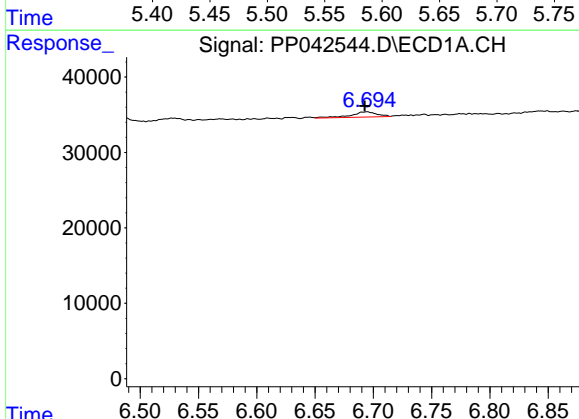
R.T.: 0.000 min
 Exp R.T.: 6.378 min
 Response: 0
 Conc: N.D.

Instrument :
 ECD_P
 ClientSampleId :



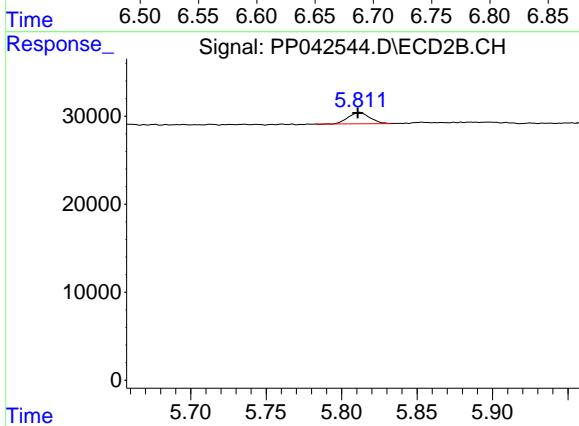
#6 AR-1016-4

R.T.: 5.580 min
 Delta R.T.: 0.001 min
 Response: 24737
 Conc: 38.31 ng/ml



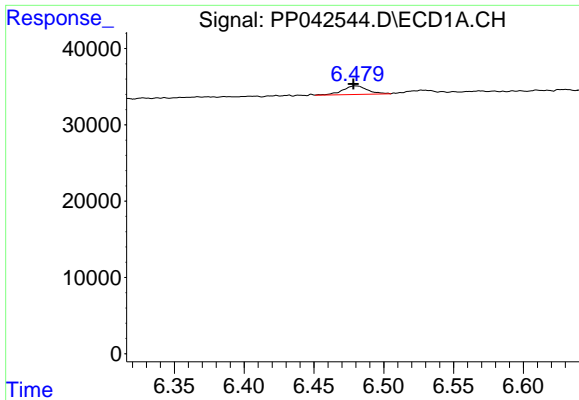
#7 AR-1016-5

R.T.: 6.695 min
 Delta R.T.: 0.002 min
 Response: 10645
 Conc: 24.64 ng/ml



#7 AR-1016-5

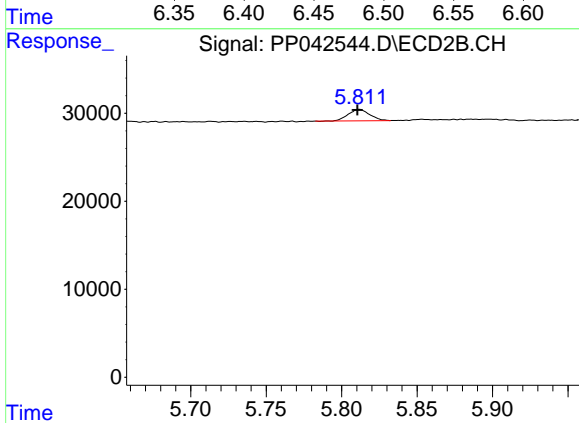
R.T.: 5.812 min
 Delta R.T.: 0.000 min
 Response: 12745
 Conc: 15.52 ng/ml



#15 AR-1232-5

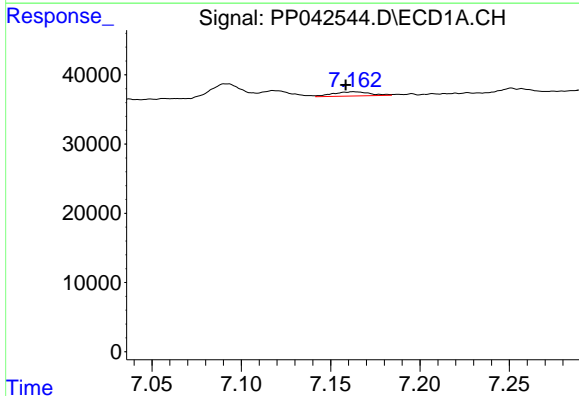
R.T.: 6.480 min
 Delta R.T.: 0.001 min
 Response: 13945
 Conc: 112.30 ng/ml

Instrument :
 ECD_P
 ClientSampleId :



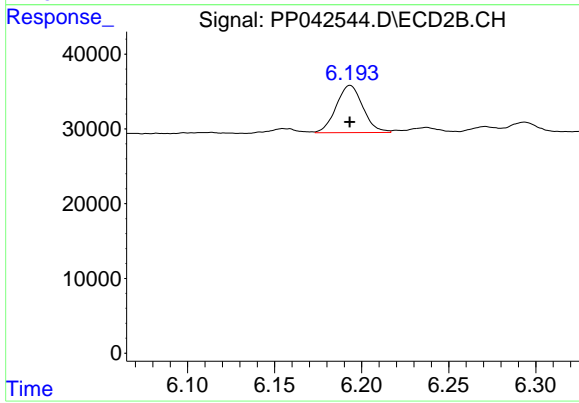
#15 AR-1232-5

R.T.: 5.812 min
 Delta R.T.: 0.001 min
 Response: 12745
 Conc: 39.82 ng/ml



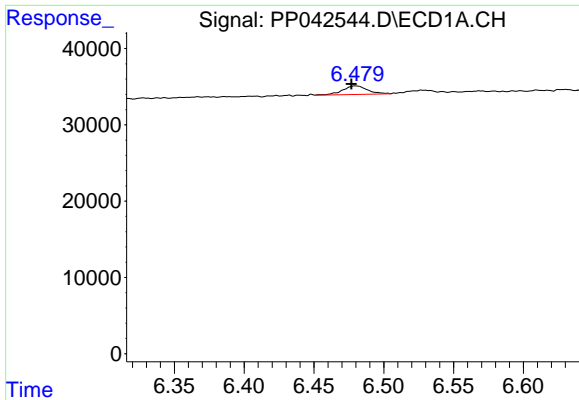
#20 AR-1242-5

R.T.: 7.163 min
 Delta R.T.: 0.004 min
 Response: 8910
 Conc: 27.04 ng/ml



#20 AR-1242-5

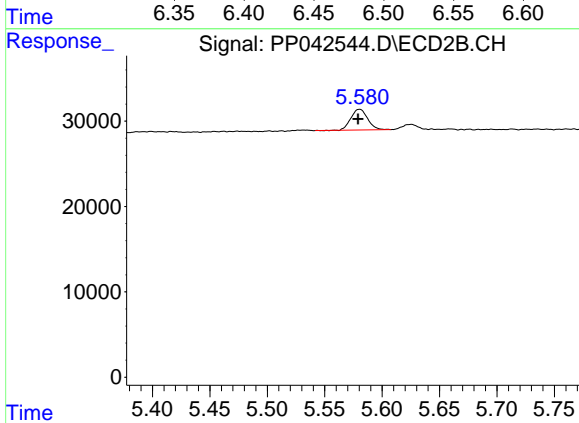
R.T.: 6.193 min
 Delta R.T.: 0.000 min
 Response: 67590
 Conc: 92.15 ng/ml



#22 AR-1248-2

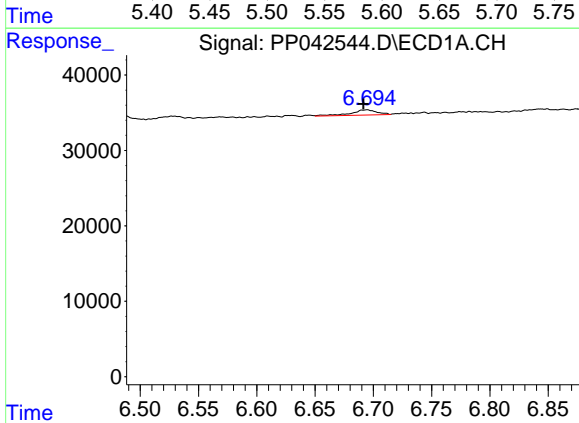
R.T.: 6.480 min
 Delta R.T.: 0.003 min
 Response: 13945
 Conc: 30.25 ng/ml

Instrument :
 ECD_P
 ClientSampleId :



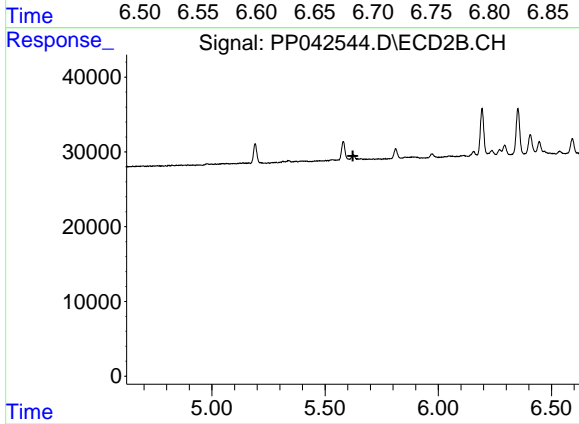
#22 AR-1248-2

R.T.: 5.580 min
 Delta R.T.: 0.001 min
 Response: 24737
 Conc: 29.05 ng/ml



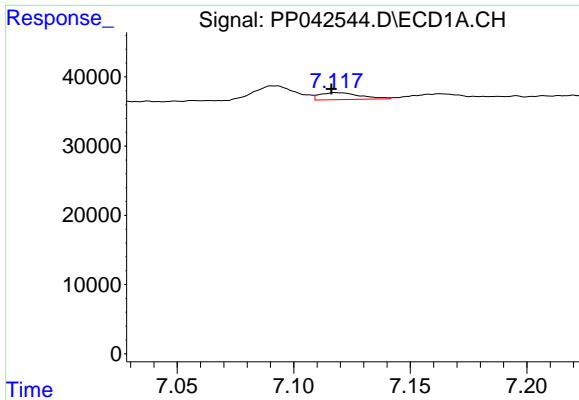
#23 AR-1248-3

R.T.: 6.695 min
 Delta R.T.: 0.003 min
 Response: 10645
 Conc: 18.71 ng/ml



#23 AR-1248-3

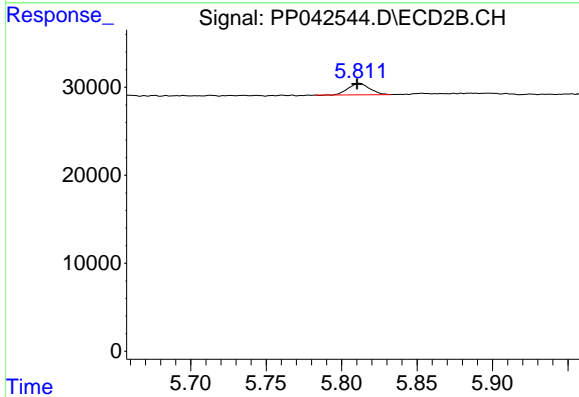
R.T.: 0.000 min
 Exp R.T. : 5.623 min
 Response: 0
 Conc: N.D.



#24 AR-1248-4

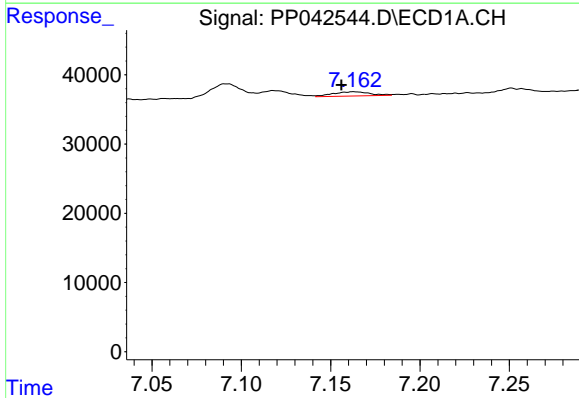
R.T.: 7.118 min
 Delta R.T.: 0.002 min
 Response: 12072
 Conc: 21.59 ng/ml

Instrument :
 ECD_P
 ClientSampleId :



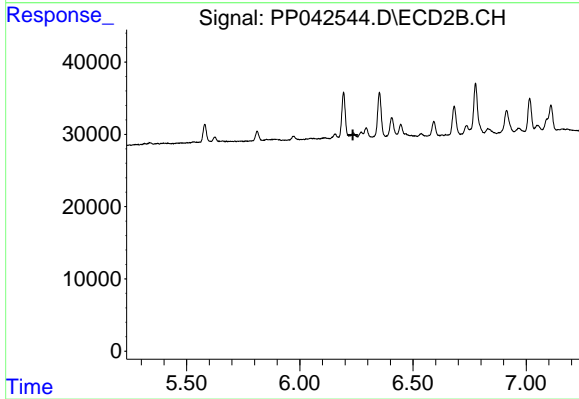
#24 AR-1248-4

R.T.: 5.812 min
 Delta R.T.: 0.001 min
 Response: 12745
 Conc: 12.18 ng/ml



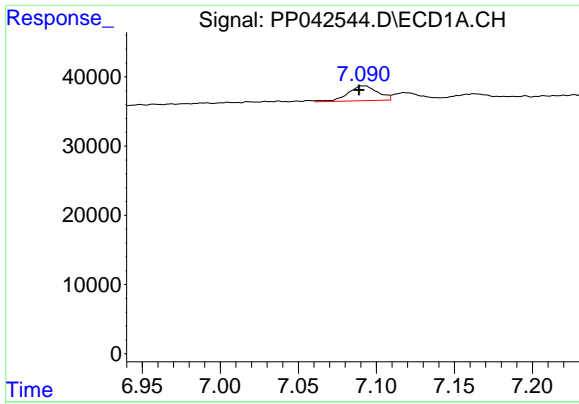
#25 AR-1248-5

R.T.: 7.163 min
 Delta R.T.: 0.007 min
 Response: 8910
 Conc: 16.26 ng/ml



#25 AR-1248-5

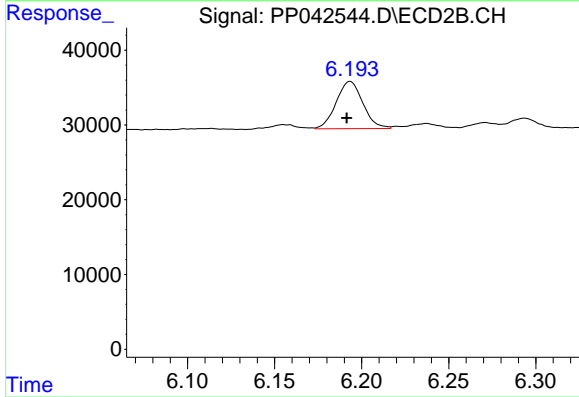
R.T.: 0.000 min
 Exp R.T.: 6.234 min
 Response: 0
 Conc: N.D.



#26 AR-1254-1

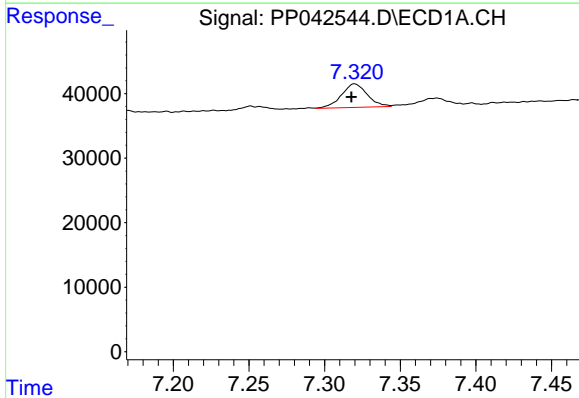
R.T.: 7.091 min
 Delta R.T.: 0.002 min
 Response: 28267
 Conc: 46.40 ng/ml

Instrument :
 ECD_P
 ClientSampleId :



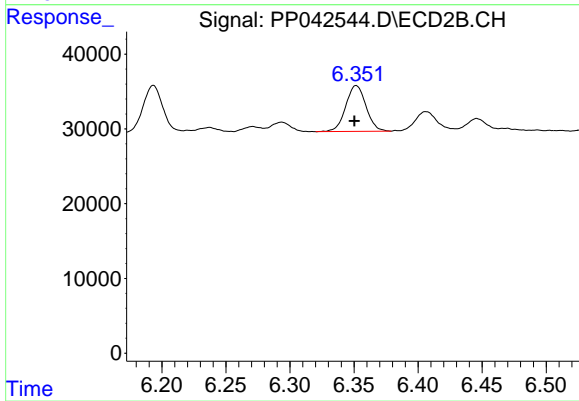
#26 AR-1254-1

R.T.: 6.193 min
 Delta R.T.: 0.002 min
 Response: 67590
 Conc: 43.89 ng/ml



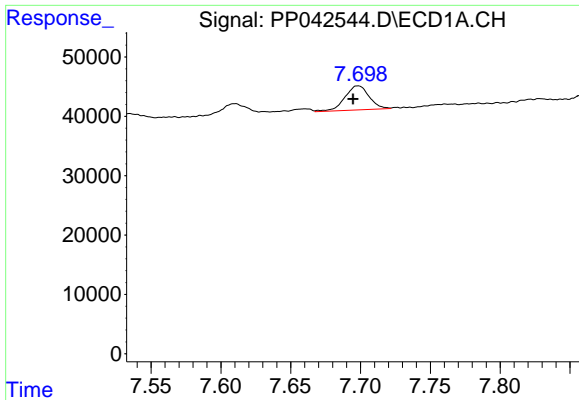
#27 AR-1254-2

R.T.: 7.320 min
 Delta R.T.: 0.002 min
 Response: 43890
 Conc: 47.79 ng/ml



#27 AR-1254-2

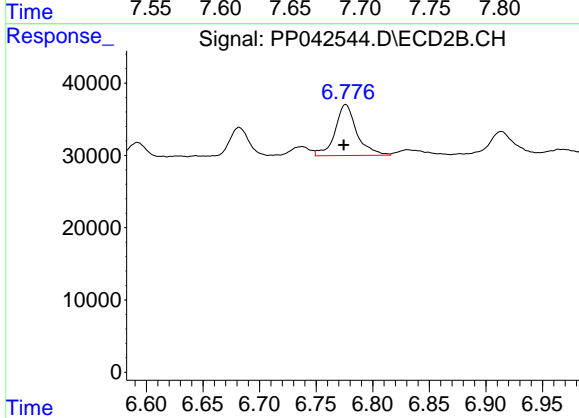
R.T.: 6.352 min
 Delta R.T.: 0.001 min
 Response: 67533
 Conc: 50.25 ng/ml



#28 AR-1254-3

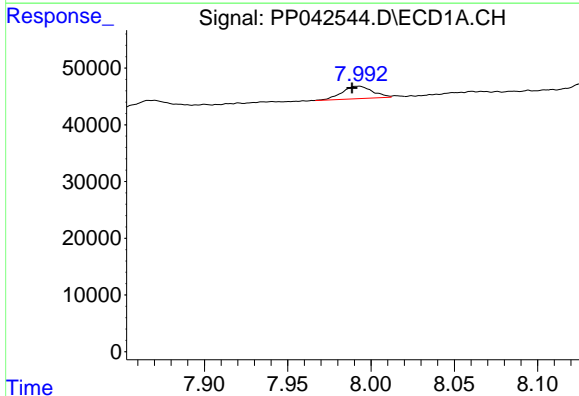
R.T.: 7.698 min
 Delta R.T.: 0.003 min
 Response: 48923
 Conc: 53.41 ng/ml

Instrument :
 ECD_P
 ClientSampleId :



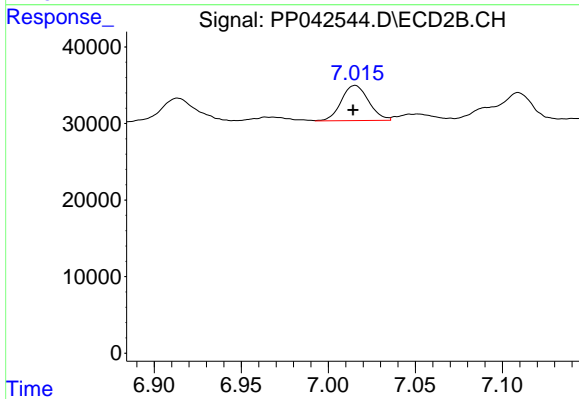
#28 AR-1254-3

R.T.: 6.776 min
 Delta R.T.: 0.002 min
 Response: 94237
 Conc: 45.12 ng/ml



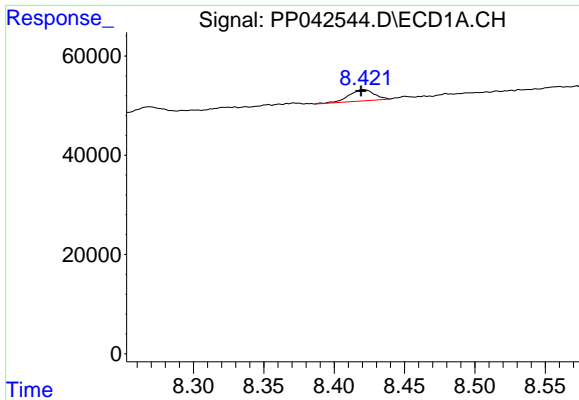
#29 AR-1254-4

R.T.: 7.993 min
 Delta R.T.: 0.004 min
 Response: 27860
 Conc: 46.51 ng/ml



#29 AR-1254-4

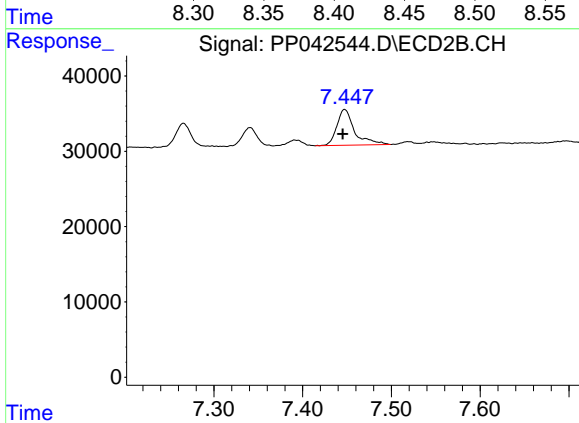
R.T.: 7.015 min
 Delta R.T.: 0.001 min
 Response: 50121
 Conc: 40.95 ng/ml



#30 AR-1254-5

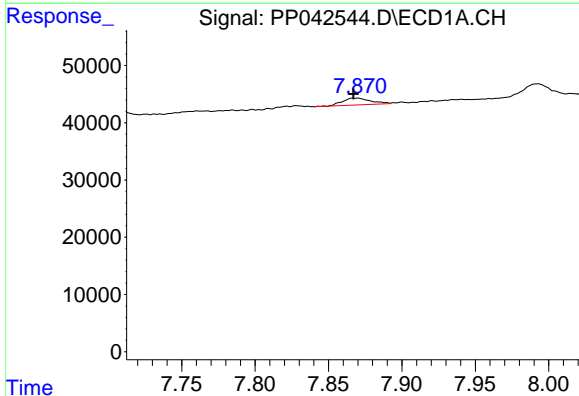
R.T.: 8.421 min
 Delta R.T.: 0.002 min
 Response: 28541
 Conc: 45.14 ng/ml

Instrument :
 ECD_P
 ClientSampleId :



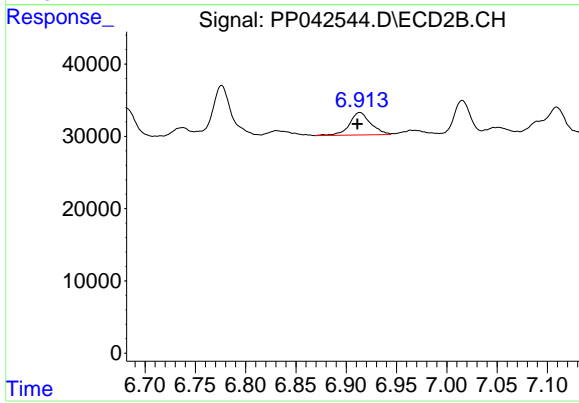
#30 AR-1254-5

R.T.: 7.447 min
 Delta R.T.: 0.002 min
 Response: 66014
 Conc: 40.19 ng/ml



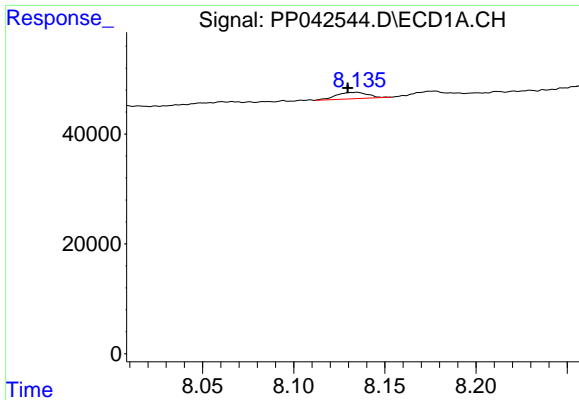
#31 AR-1260-1

R.T.: 7.870 min
 Delta R.T.: 0.003 min
 Response: 15897
 Conc: 26.16 ng/ml



#31 AR-1260-1

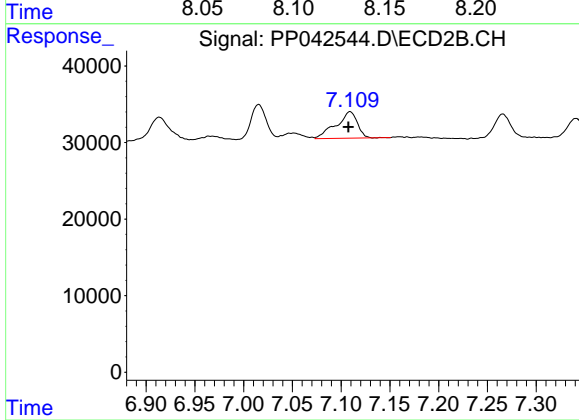
R.T.: 6.914 min
 Delta R.T.: 0.002 min
 Response: 46100
 Conc: 35.43 ng/ml



#32 AR-1260-2

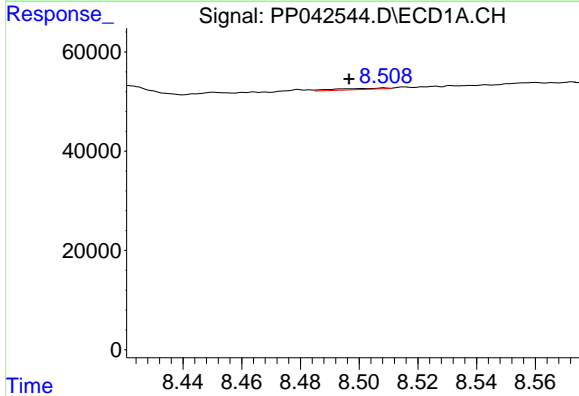
R.T.: 8.135 min
 Delta R.T.: 0.005 min
 Response: 14136
 Conc: 20.10 ng/ml

Instrument :
 ECD_P
 ClientSampleId :



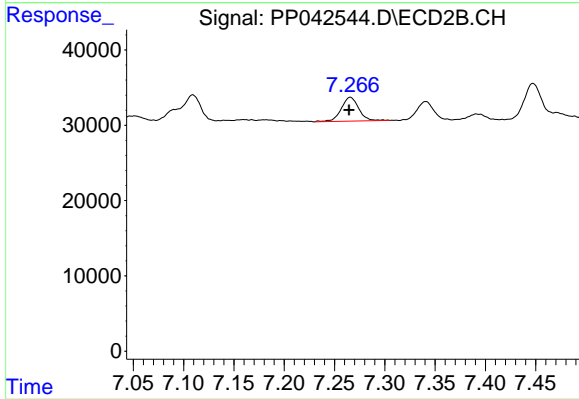
#32 AR-1260-2

R.T.: 7.109 min
 Delta R.T.: 0.001 min
 Response: 53098
 Conc: 34.93 ng/ml



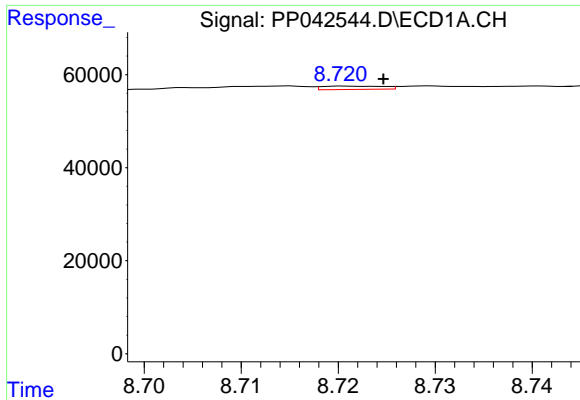
#33 AR-1260-3

R.T.: 8.509 min
 Delta R.T.: 0.012 min
 Response: 2886
 Conc: 5.21 ng/ml



#33 AR-1260-3

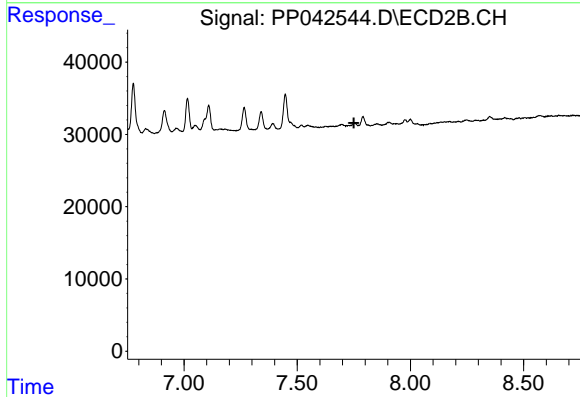
R.T.: 7.266 min
 Delta R.T.: 0.001 min
 Response: 38458
 Conc: 26.90 ng/ml



#34 AR-1260-4

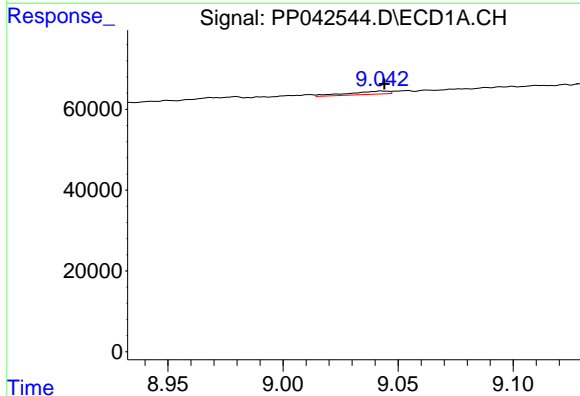
R.T.: 8.721 min
 Delta R.T.: -0.004 min
 Response: 3227
 Conc: 4.89 ng/ml

Instrument :
 ECD_P
 ClientSampleId :



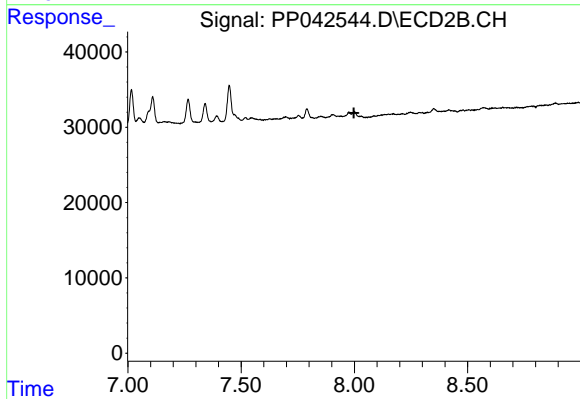
#34 AR-1260-4

R.T.: 0.000 min
 Exp R.T. : 7.750 min
 Response: 0
 Conc: N.D.



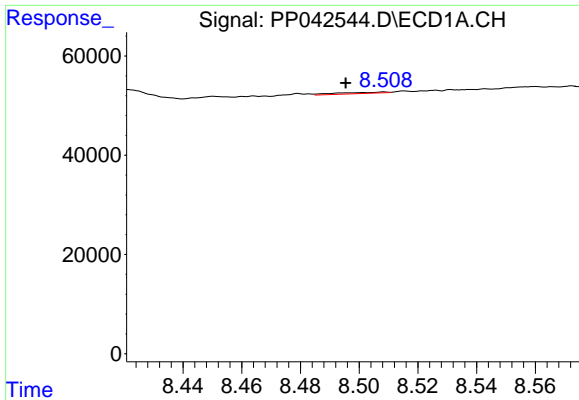
#35 AR-1260-5

R.T.: 9.043 min
 Delta R.T.: -0.001 min
 Response: 9344
 Conc: 7.75 ng/ml



#35 AR-1260-5

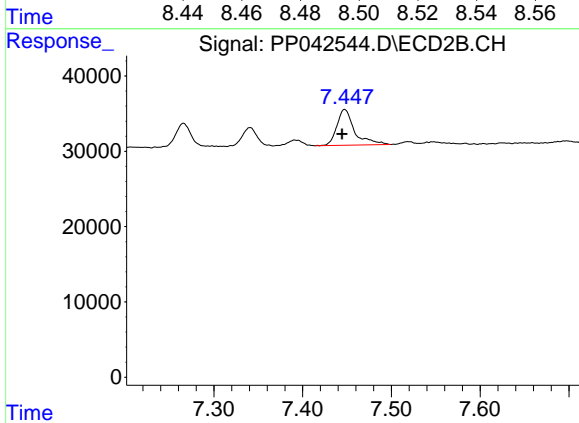
R.T.: 0.000 min
 Exp R.T. : 7.998 min
 Response: 0
 Conc: N.D.



#36 AR-1262-1

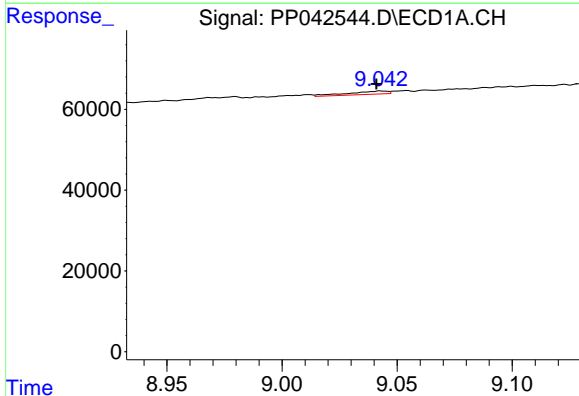
R.T.: 8.509 min
 Delta R.T.: 0.013 min
 Response: 2886
 Conc: 3.69 ng/ml

Instrument :
 ECD_P
 ClientSampleId :



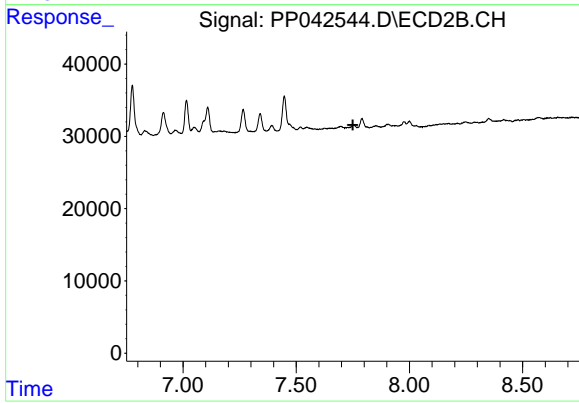
#36 AR-1262-1

R.T.: 7.447 min
 Delta R.T.: 0.003 min
 Response: 66014
 Conc: 76.05 ng/ml



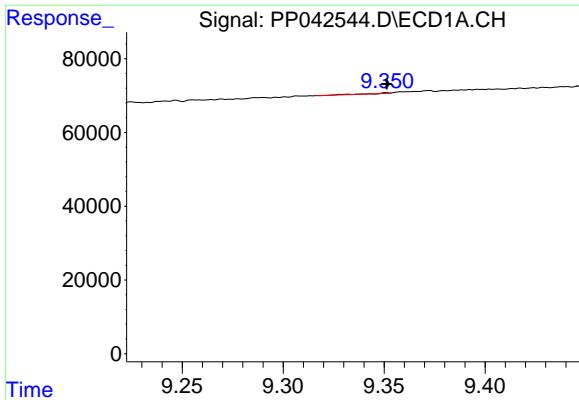
#37 AR-1262-2

R.T.: 9.043 min
 Delta R.T.: 0.002 min
 Response: 9344
 Conc: 6.99 ng/ml



#37 AR-1262-2

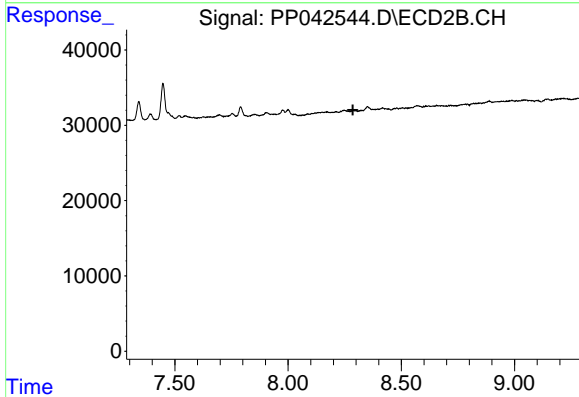
R.T.: 0.000 min
 Exp R.T. : 7.750 min
 Response: 0
 Conc: N.D.



#38 AR-1262-3

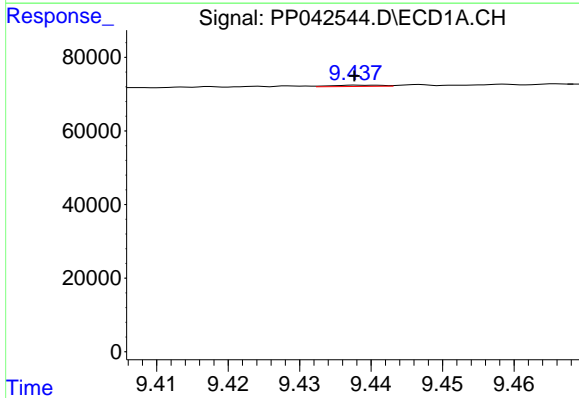
R.T.: 9.351 min
 Delta R.T.: 0.000 min
 Response: 767
 Conc: 1.16 ng/ml

Instrument :
 ECD_P
 ClientSampleId :



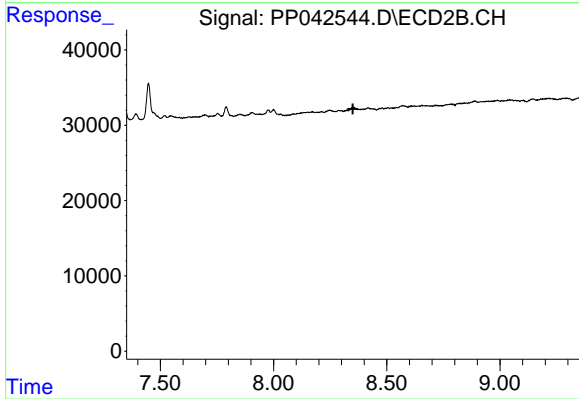
#38 AR-1262-3

R.T.: 0.000 min
 Exp R.T. : 8.286 min
 Response: 0
 Conc: N.D.



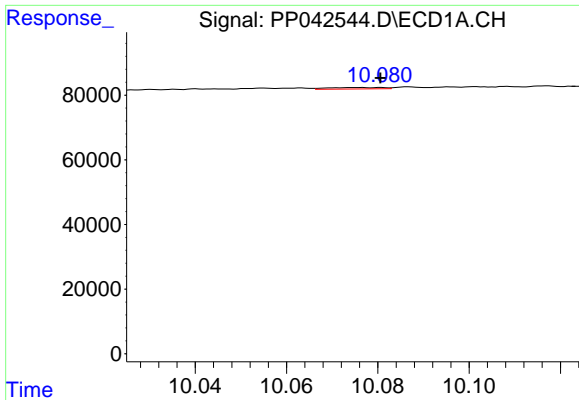
#39 AR-1262-4

R.T.: 9.441 min
 Delta R.T.: 0.003 min
 Response: 1648
 Conc: 3.41 ng/ml



#39 AR-1262-4

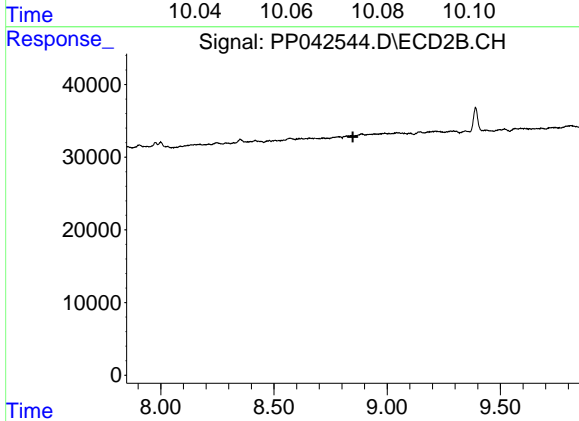
R.T.: 0.000 min
 Exp R.T. : 8.350 min
 Response: 0
 Conc: N.D.



#40 AR-1262-5

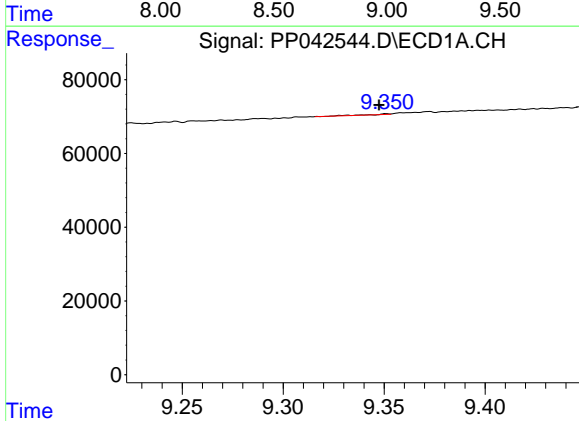
R.T.: 10.081 min
 Delta R.T.: 0.000 min
 Response: 3793
 Conc: 7.77 ng/ml

Instrument :
 ECD_P
 ClientSampleId :



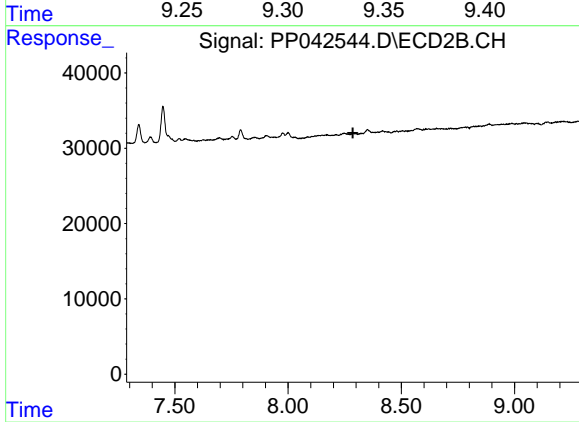
#40 AR-1262-5

R.T.: 0.000 min
 Exp R.T. : 8.849 min
 Response: 0
 Conc: N.D.



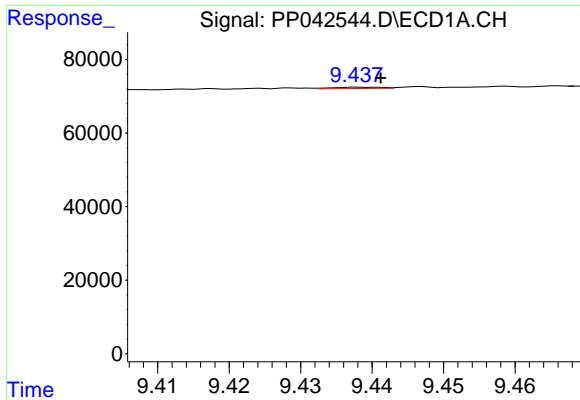
#41 AR-1268-1

R.T.: 9.351 min
 Delta R.T.: 0.003 min
 Response: 767
 Conc: 0.47 ng/ml



#41 AR-1268-1

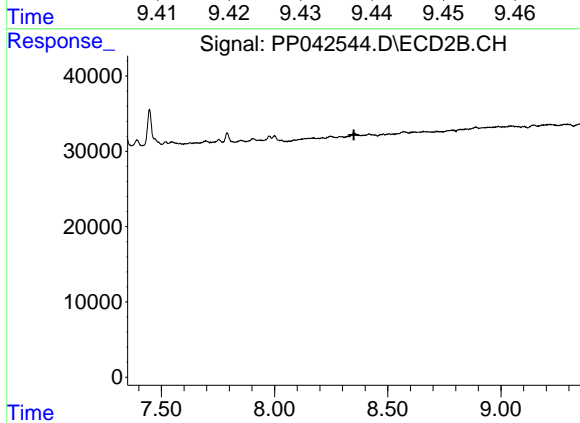
R.T.: 0.000 min
 Exp R.T. : 8.286 min
 Response: 0
 Conc: N.D.



#42 AR-1268-2

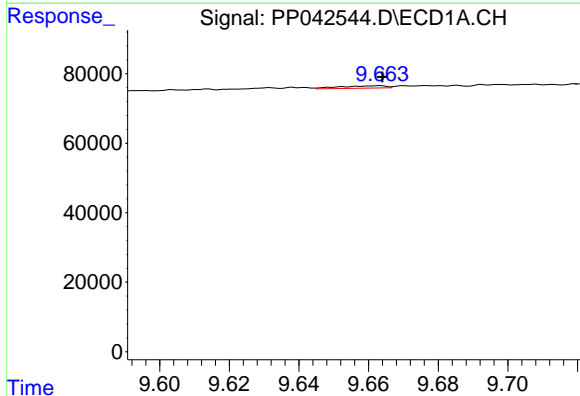
R.T.: 9.441 min
 Delta R.T.: 0.000 min
 Response: 1648
 Conc: 1.09 ng/ml

Instrument :
 ECD_P
 ClientSampleId :



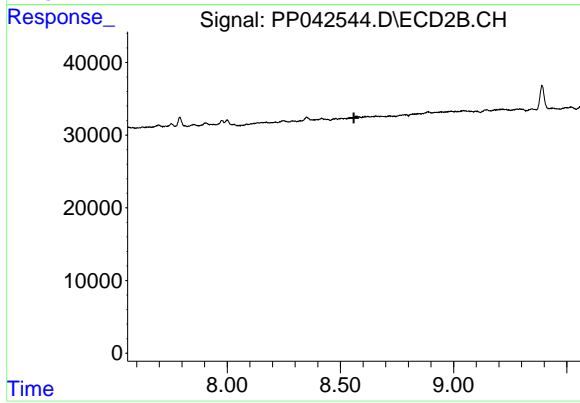
#42 AR-1268-2

R.T.: 0.000 min
 Exp R.T. : 8.351 min
 Response: 0
 Conc: N.D.



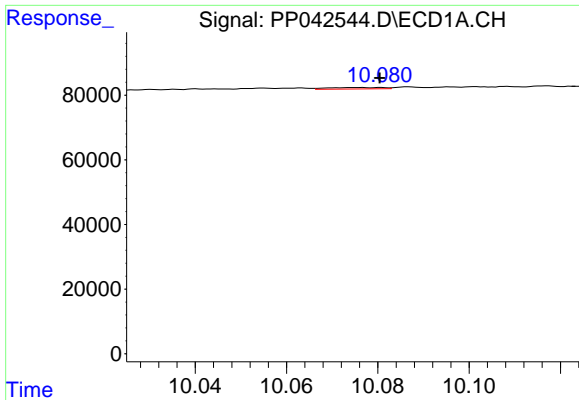
#43 AR-1268-3

R.T.: 9.663 min
 Delta R.T.: 0.000 min
 Response: 6355
 Conc: 4.72 ng/ml



#43 AR-1268-3

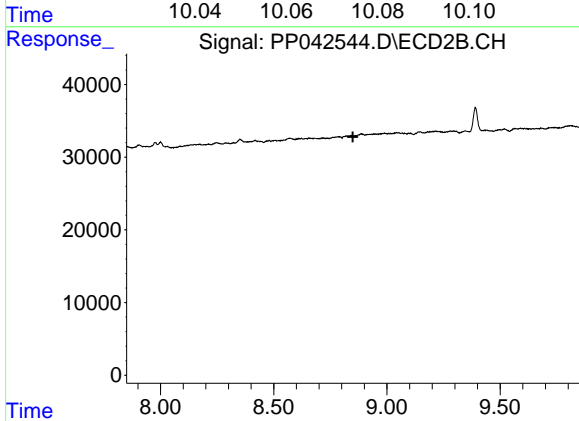
R.T.: 0.000 min
 Exp R.T. : 8.560 min
 Response: 0
 Conc: N.D.



#44 AR-1268-4

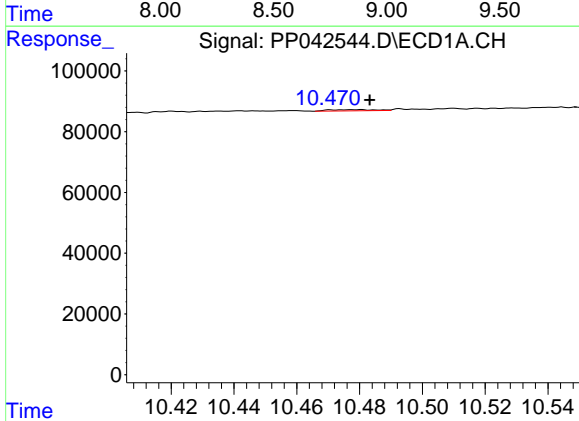
R.T.: 10.081 min
 Delta R.T.: 0.000 min
 Response: 3793
 Conc: 6.93 ng/ml

Instrument :
 ECD_P
 ClientSampleId :



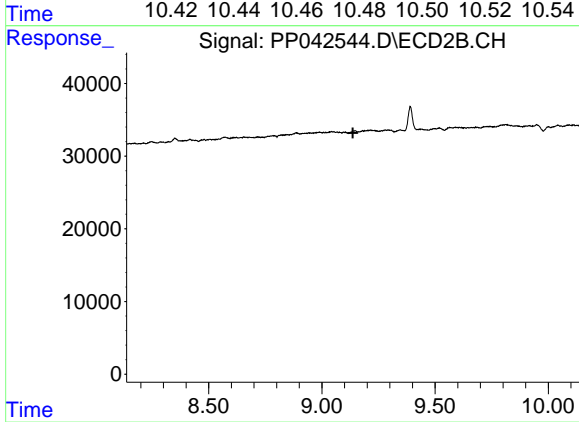
#44 AR-1268-4

R.T.: 0.000 min
 Exp R.T. : 8.849 min
 Response: 0
 Conc: N.D.



#45 AR-1268-5

R.T.: 10.481 min
 Delta R.T.: -0.002 min
 Response: 4075
 Conc: 0.91 ng/ml



#45 AR-1268-5

R.T.: 0.000 min
 Exp R.T. : 9.137 min
 Response: 0
 Conc: N.D.